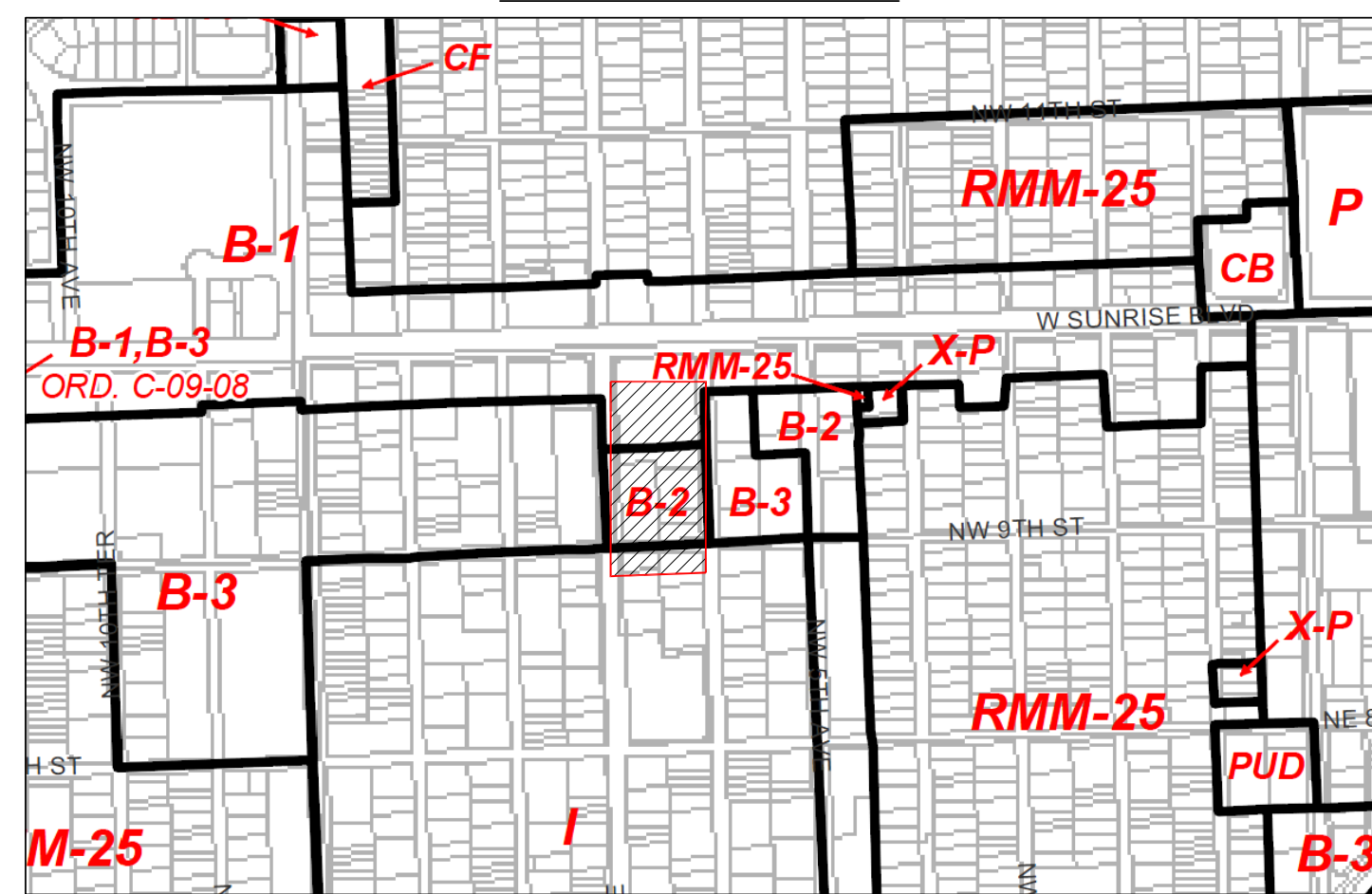
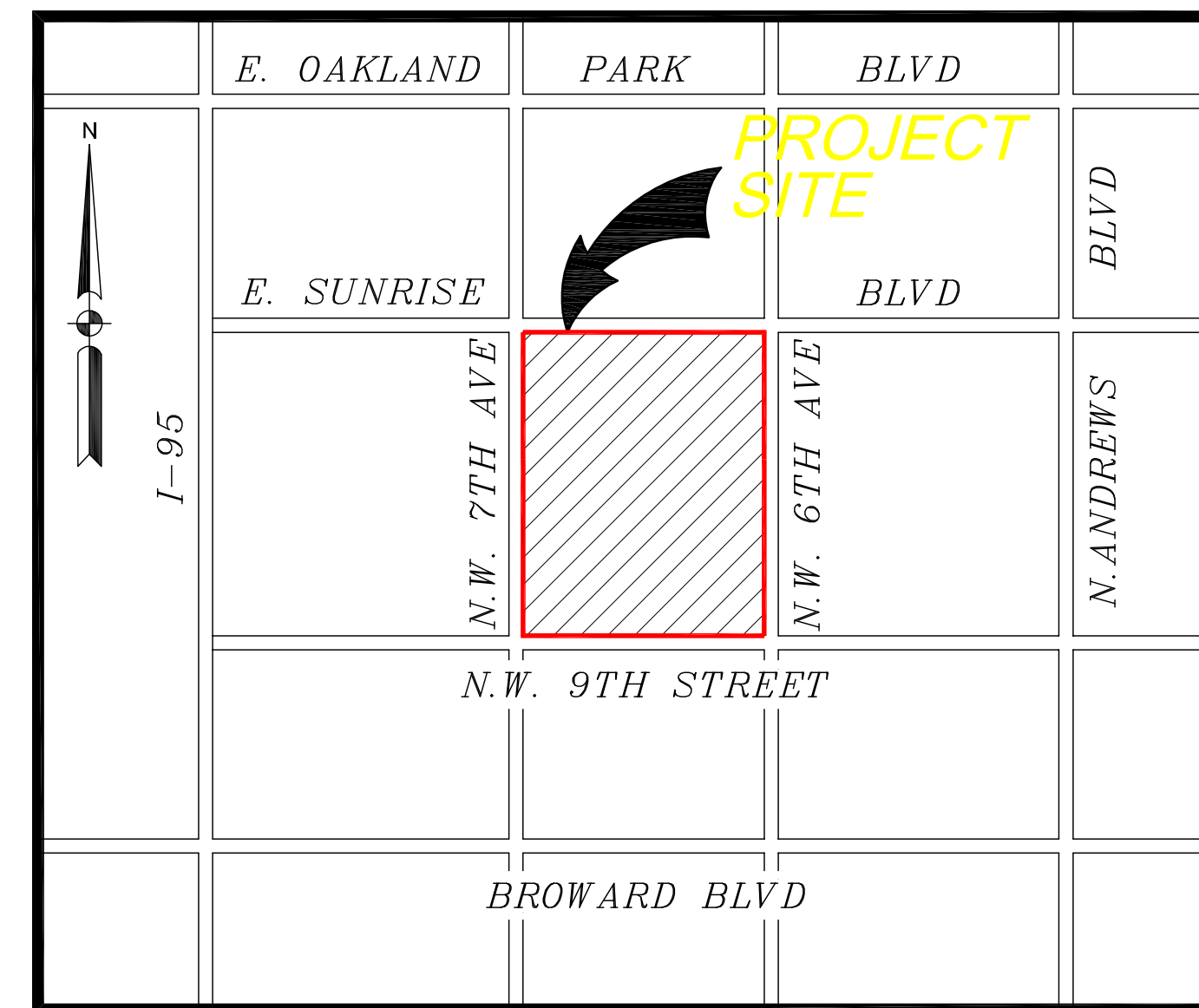
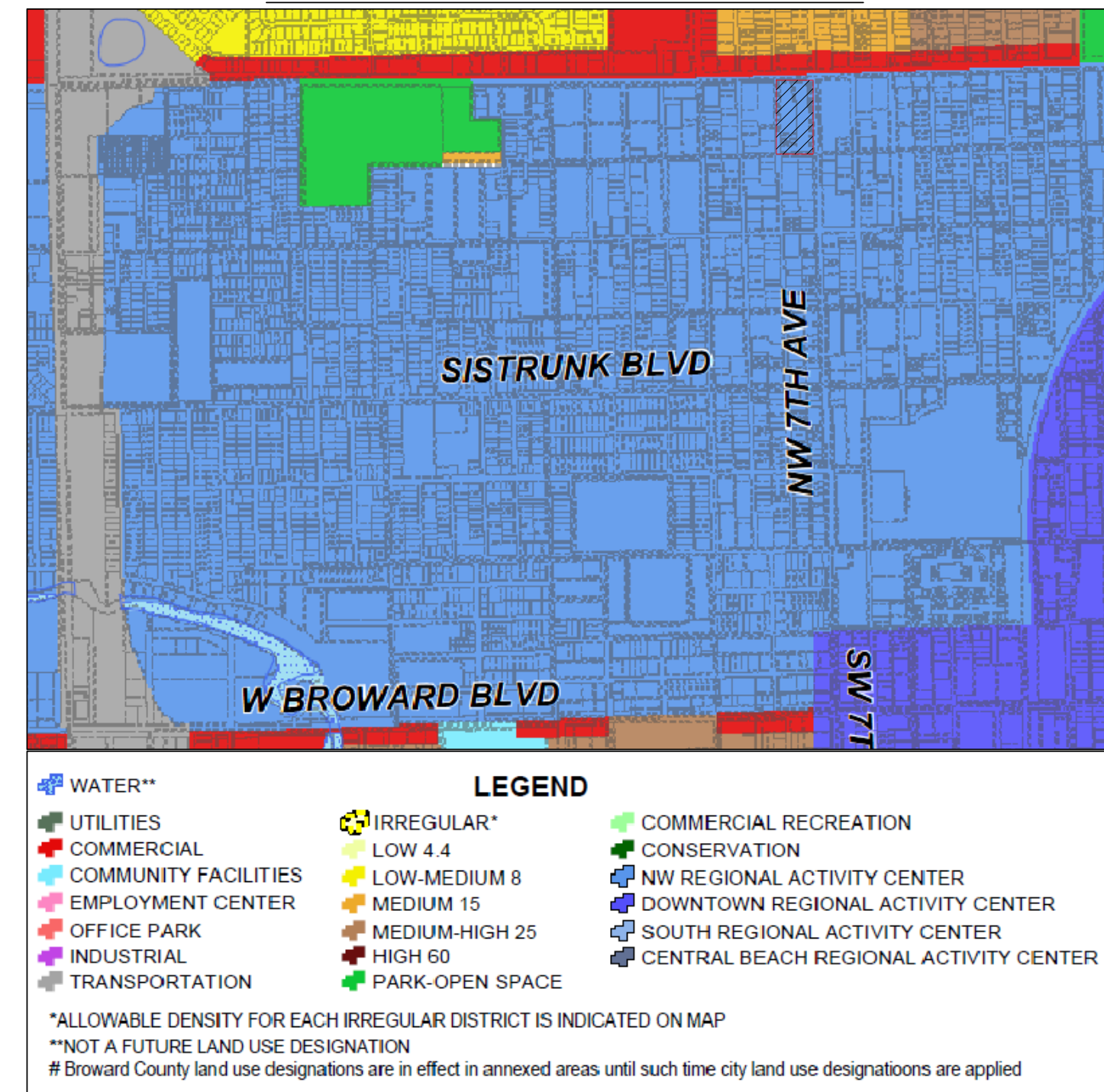


INTERIOR RENOVATION FOR BROWARD COUNTY CENTRAL HOMELESS ASSISTANCE CENTER 600 W. SUNRISE BLVD CITY OF FORT LAUDERDALE, BROWARD COUNTY, FLORIDA

ZONING MAP



FUTURE LAND USE MAP



VICINITY MAP
N.T.S.

INDEX

SP1-1	SITE PLAN
A1-1	EXISTING FLOOR PLAN
LP-3	LANDSCAPE PLAN
C-3	CIVIL PLAN
E-1	PHOTOMETRIC PLAN

LAND DESCRIPTION

PARCEL "A", A RESUBDIVISION OF LOTS 1 THROUGH 15, INCLUSIVE, AND LOTS 35 THROUGH 48, INCLUSIVE, BLOCK 204, PROGRESSO, ACCORDING TO THE PLAT THEREOF RECORDED IN PLAT BOOK 58, PAGE 47, OF THE PUBLIC RECORDS OF BROWARD COUNTY, FLORIDA.

TOGETHER WITH:
 LOTS 16, 17, 18, 19, AND 20 AND LOTS 25, 26, 27, 28, 29, 30, 31, 32, 33, AND 34, LESS THE WEST 15 FEET THEREOF, BLOCK 204, PROGRESSO, ACCORDING TO THE PLAT THEREOF RECORDED IN PLAT BOOK 2, PAGE 18, OF THE PUBLIC RECORDS OF DADE COUNTY, FLORIDA.

SAID LANDS SITUATE, LYING AND BEING IN THE CITY OF FORT LAUDERDALE, BROWARD COUNTY, FLORIDA AND CONTAINING 135,407 SQUARE FEET OR 3.1085 ACRES MORE OR LESS.

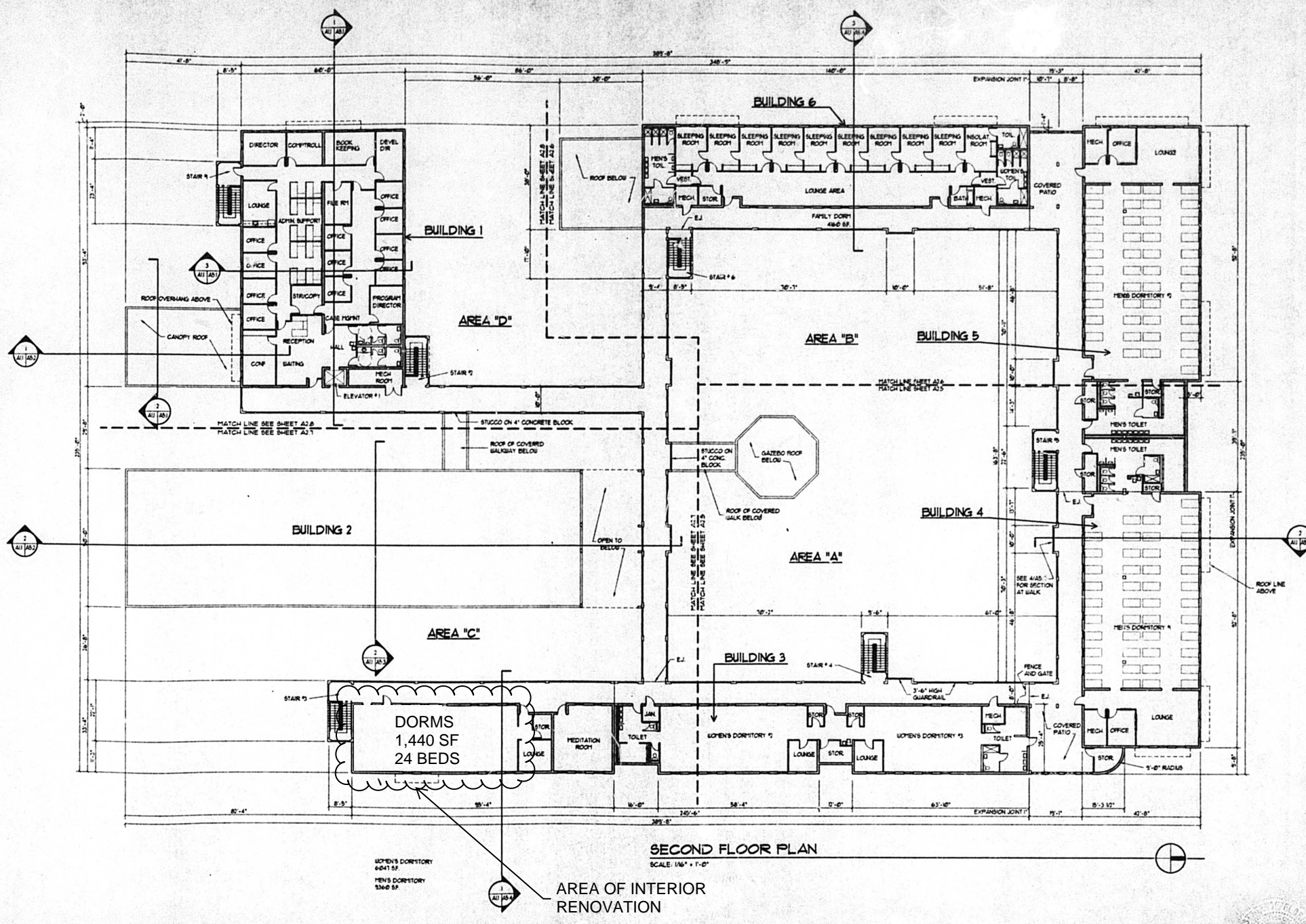
THESE PLANS MAY HAVE BEEN
 REDUCED IN SIZE BY REPRODUCTION.
 THIS MUST BE CONSIDERED WHEN
 OBTAINING SCALED DATA.



PREPARED FOR:
BROWARD PARTNERSHIP FOR THE HOMELESS
BROWARD COUNTY BOARD OF COUNTY COMMISSIONERS



PROJECT No. 07699.M0 APRIL 206



NO.	REVISIONS	DATE
1	PHAL DRC	10/01
2	PERNY DRC	10/01

CONSULTANT:

HOMELESS ASSISTANCE CENTER
 600 W. SUNRISE BOULEVARD
 FORT LAUDERDALE, FLORIDA

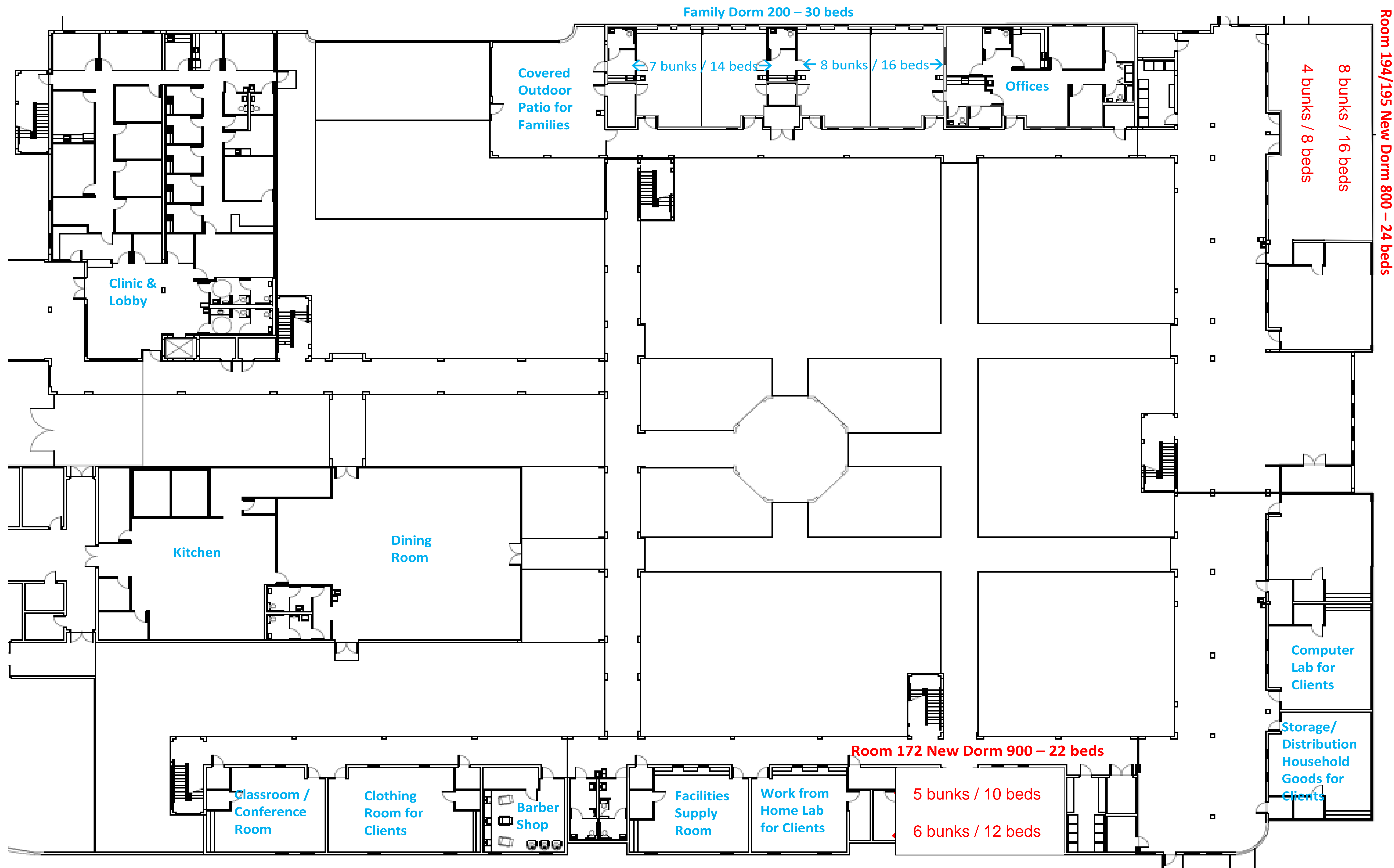
SCHARF ASSOCIATES
 INCORPORATED ARCHITECTS • PLANNERS
 1407 S.E. 9th Avenue
 Suite 200
 Ft. Lauderdale, Florida 33305
 954-566-0700
 64-03467

DRAWING TITLE:
 SECOND FLOOR PLAN
 DRAWN: PSH
 CHECKED: CZ
 DATE: 04/91
 SCALE: AS NOTED
 PROJECT NO: 2036
 SHEET:

A1-2

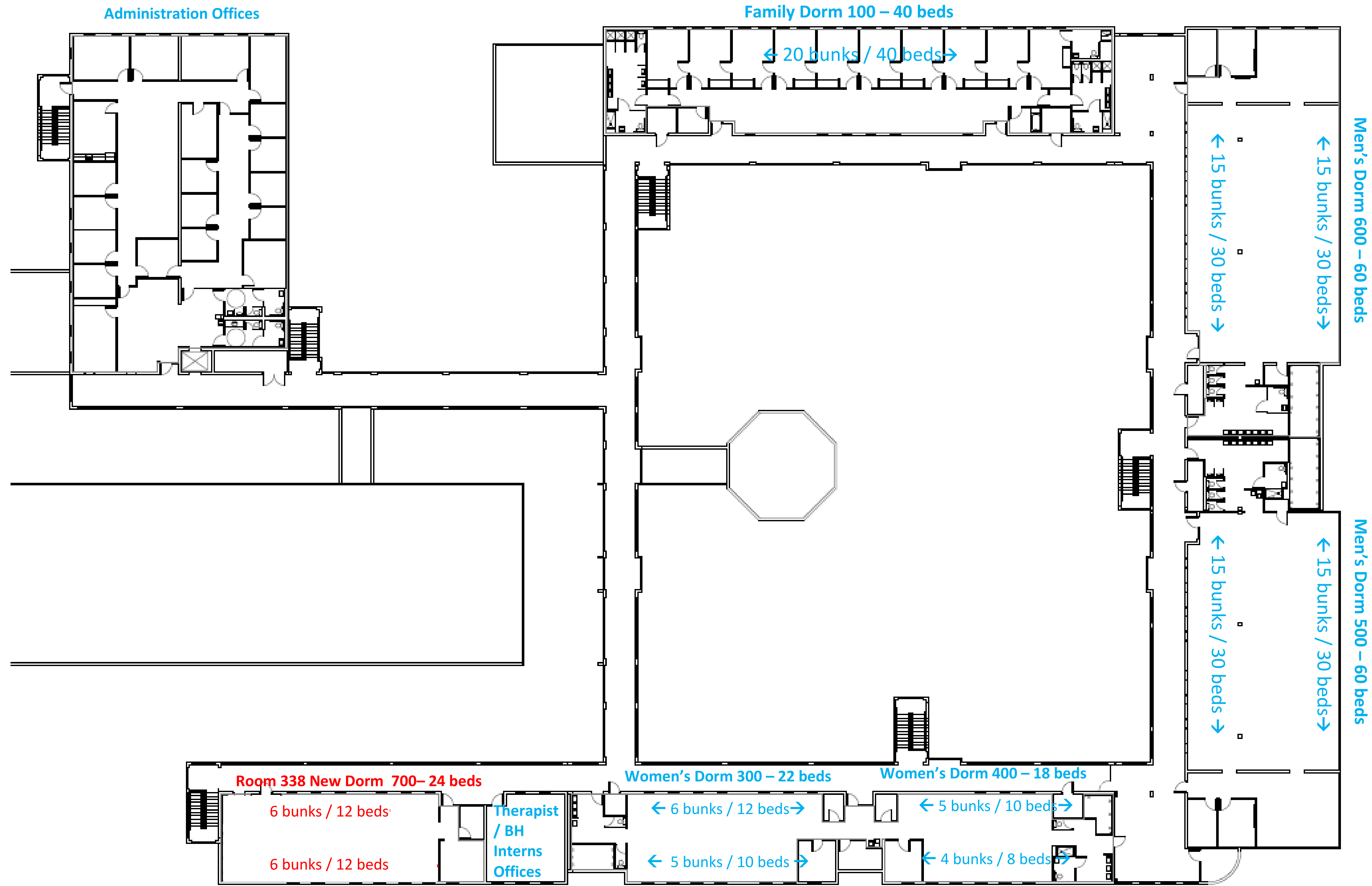
P:\WORK\11525\11525.DWG, 11/24/91, 10:04

Handwritten signature and date: M. S. 11/24/91



FIRST FLOOR

A2-1 DORM EXPANSION



SECOND FLOOR

**A2-2
DORM
EXPANSION**