



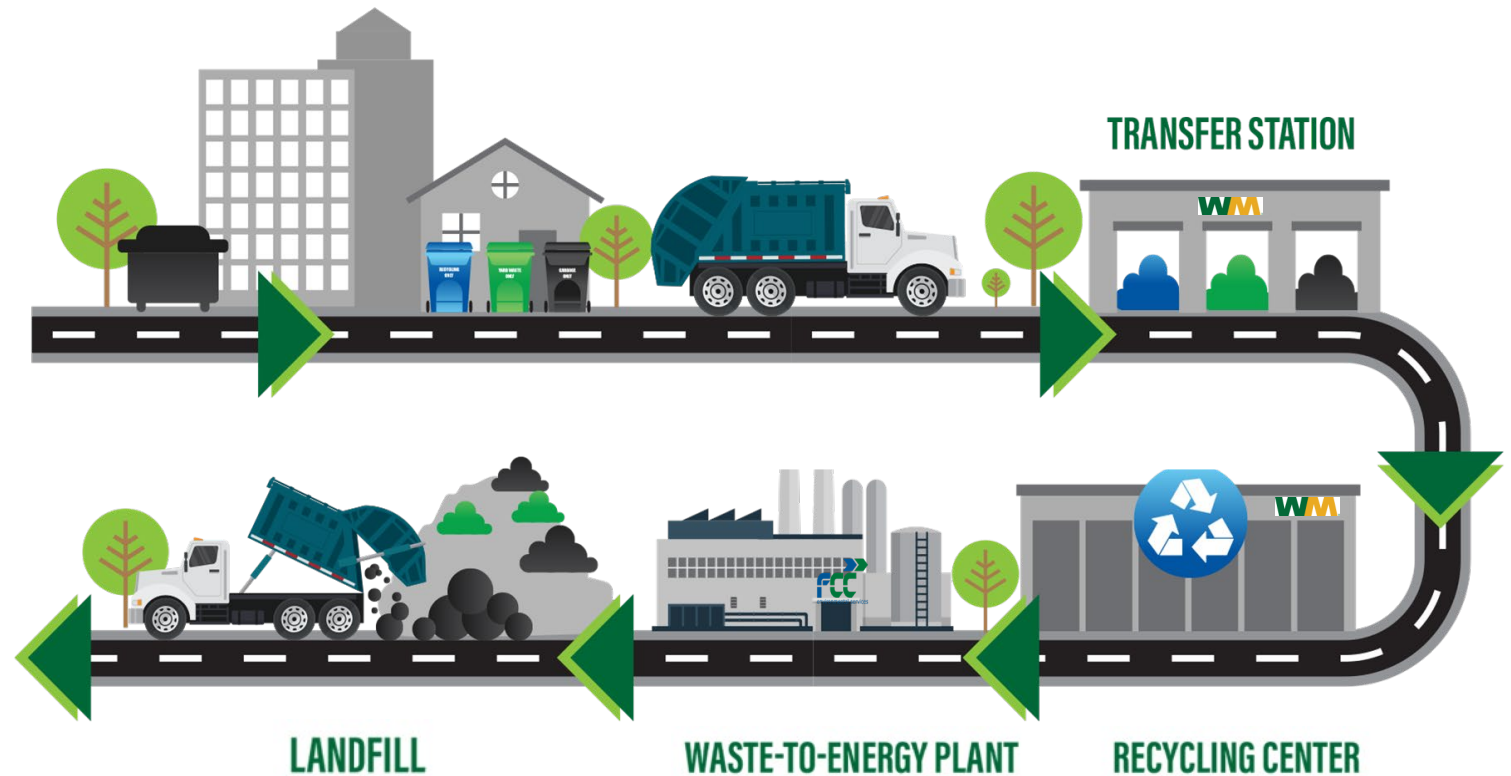
CITY OF
FORT LAUDERDALE

Solid Waste Authority of Broward County

*City Staff Presentation
Public Works Department
May 19, 2026*

Background

- The Solid Waste Authority of Broward County (SWA) is intended to support post-collection processing and disposal activities.
- The City will maintain all responsibility for all hauling and collection programs whether or not it joins the SWA.



Background

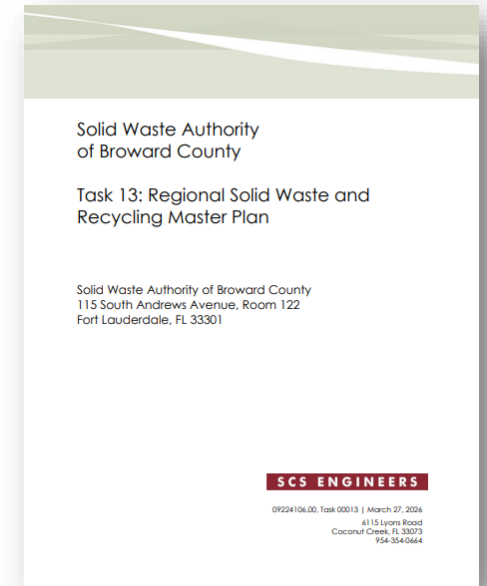


- Started as the Solid Waste Working Group in 2019 with resulting Interlocal Agreement (ILA) approved in 2023.
- Twenty-eight (28) of thirty-one (31) municipal members participate, representing approximately 1.7 million residents.
- Three (3) municipalities not participating:
 - Hallandale Beach
 - Pembroke Pines
 - Pompano Beach
- Fundamental conditions required for adoption and continuation of ILA are nearing deadlines.
- Facilities Amendment
 - Approved on March 20, 2026, by the SWA Governing Board
 - Must be approved by participating cities representing at least eighty percent (80%) of the population **and** Broward County via Commission Resolution
- Master Plan
 - Approved on April 17, 2026, by the SWA Governing Board

ILA Background



- Initial forty (40)-year term with two, ten (10)-year extensions
- Includes Flow Control requirements:
 - Economic - Assessments, Tipping Fee, Rate surcharge
 - Regulatory - Municipal ordinances in compliance with ILA terms and conditions
 - Waste streams - Members required to use Authority facilities
- Master Plan provides recommendations on how the Authority will work
- Facilities Amendment - details Authority's end-of-life language & how to deal with Authority-owned assets/liabilities
- Includes an Indemnification provision (members not liable)



City of Fort Lauderdale Current Service Levels - Collections

Residential

- Twice weekly solid waste service
- Once weekly yard waste service
- Once weekly recycling service
- Once monthly bulk service
- Curbside electronics pick-up
- Curbside tire pick-up
- Household hazardous waste events

Commercial

- Open market for solid waste and recycling
- Open market for construction and demolition debris



City of Fort Lauderdale Current Service Levels - Disposal and Processing

- Municipal Solid Waste is flow controlled via the ILA with Broward County through the FCC waste-to-energy plant through July 2, 2028.
- Yard waste is hauled to a WM material recovery center where it is screened and processed for mulch and composting.



City of Fort Lauderdale Current Service Levels - **Disposal and Processing**



- Bulk waste is hauled to a WM material recovery center where it is sorted for recoverable materials (metals, concrete, wood) and the residuals are taken to a landfill.
- Recycling is hauled to a state-of-the-art recycling facility owned by WM and is sorted and baled to be marketed for post-consumer use.
- Electronics are sent to Urban Mining, an e-Steward certified recycler where valuable metals are captured for recycling.



City of Fort Lauderdale Statistics

- Fort Lauderdale represents the largest participating municipality in the Solid Waste Authority
 - Eleven-point five percent (11.5%) of the total population represented
 - Eleven-point three percent (11.3%) of the total estimated tonnage

<u>Commodity- City of Fort Lauderdale</u>	<u>Annual Tons 2023</u>
Commercial Municipal Solid Waste	179,519
Residential Municipal Solid Waste	51,884
Residential Recycling	10,944
Residential Yard Waste	16,189
Residential Bulk Waste	28,552
Commercial Construction and Demolition Debris	173,037
	460,125



Master Plan Scenarios

- There were various scenarios contemplated for the master plan focused on recycling, reuse, diversion, zero waste, market risks, environmental, and cost efficiency.
- Scenario A is recommended by the SWA Governing Board

Scenario	Recycling (Cost)	Reuse (Cost)	Diversion (Cost)	Zero Waste Strategies (Cost)	Market Risks (Cost)	Environmental Impacts, Health and Safety (Cost)	Cost Efficiency
A	Low	Low	Medium	Low	Low	Medium	High
B	High	High	High	Medium	High	High	Medium
C	High	High	High	Medium	High	High	Medium
D	Medium	Medium	Medium	High	Medium	High	Low
E	High	High	High	Medium	High	High	Low

Master Plan “Scenario A” and Steps Forward

Programs	Additional Facility Needs and Capacity of Each Facility - Tons Per Year (TPY)	Target Diversion Rate Increase
<ul style="list-style-type: none"> • Restore Recycling Services to 20% of Broward County • Add segregated Curbside Yard Trash (YT) Collection • Add Food Waste (FW) Drop-Off Events • Add Permanent Household Hazardous Waste (HHW)/ Electronics/Recycling Drop-Off Sites • Add reduction, reuse, and diversion programs and policies. 	<ul style="list-style-type: none"> • Two (2) Single- Stream Material Recovery Facilities (250,000 TPY each) • Two (2) New Organics Processing Sites with: Two (2) Mulch/ Colorizing Operations (175,000 TPY each) and One (1) New Biochar Pyrolysis operation (30,000k TPY) • Two (2) C&D Recovery Facilities (450,000 TPY each) • Eight (8) Permanent Drop-Off Centers (2,400 TPY each) • Three (3) Transfer Stations (North, South, Central Broward County) • One (1) Landfill 	<p>+25 percentage points to 62%</p>

Master Plan Next Steps and Impacts

- Mandatory Commercial Recycling Ordinance
- Mandatory Construction and Demolition Recycling Ordinance
- Curbside Yard Waste/Compost Collections
- Harmonized Recycling Standards
- Drop off locations
- Centralized education and outreach



Facilities Amendment - Key Points

SWA Allowable Facilities

- Transfer stations
- Recycling facilities
- Drop-off centers
- Organics processing facilities

Governance & Rate Controls

- All parties – inspection rights (own expense)
- County – technical review authority
- Maximum service charges set in the master plan with any increases requiring:
 - Executive Committee & Governing Board approval
 - Municipalities representing two thirds (2/3) and Broward County approval
- Amendment needs eighty percent (80%) population approval by SWA members to own a solid waste disposal facility

Facilities Amendment Wind Down

Entity Takeover (Option A)

County of a successor takes over the system

Requirements:

- County approval
- Approval from
 - Fifty-one percent (51%) of municipal parties
 - Fifty-five percent (55%) total tonnage of all waste in the county
- Outcomes:
 - All assets and liabilities transfer
 - Non-participants receive no asset value

Transfer Solid Waste Services (Option B)

County/municipality each responsible for its own system

Asset Transfers:

- Regional assets: County > Host City > Other Parties
- Non-regional assets: Host City > City > Other Parties
- Any assets not accepted will be sold and proceeds distributed by population
- Transferred assets must be used for solid waste for five (5)-years. At the end of the five (5)-years (or if not used for solid waste) must either pay fair market value of sell

Outcomes:

- All assets are owned by parties or sold to third parties
- Value of all assets eventually distributed by population

Facilities Amendment

Maximum Service Charges

Commodity	SWA Maximum Tipping Fee per Ton (2025)
Recyclable Materials*	\$ 110.00
Yard Waste (for Disposal)	\$ 52.56
Yard Waste (for Beneficial Use)	\$ 80.00
Municipal Solid Waste	\$ 57.49
Construction and Demolition Debris/Bulk Waste	\$ 52.56

Maximum Fees escalate annually based on Producer Price Index for Solid Waste Collection (PPI-SW)

**Recycling fee does not reflect offset for the Average Market Value (AMV) of the materials sold to market*

Solid Waste Authority - Financial Framework

Phase I:

2027 Member
Contribution

Total Annual Payments 2024 – 2027
\$919,722

Phase 2:

2028 to 2030
Tip Fee Surcharge

Total Charge Estimate 2028 - 2030
\$3,253,084

\$2.22 per ton
across all tons

Phase 3:

Beginning 2031
Non-Ad Valorem
Assessment

\$2.72 per ton across all tons
Cost per home estimate: \$3.54

Solid Waste Authority Membership

Residential Service per Home	City Current Cost	Maximum SWA Cost*
<i>Solid Waste</i>	\$ 6.24	\$ 6.49
<i>Yard Waste</i>	\$ 1.68	\$ 1.86
<i>Recycling</i>	\$ 3.59	\$ 2.57
<i>Bulk</i>	\$ 3.16	\$ 3.31
Monthly Disposal Cost	\$ 14.67	\$ 14.23
<i>Difference</i>	\$ 0.44	

*Includes \$2.22 per ton tipping fee surcharge; Subject to annual adjustments based on PPI for Solid Waste Index

Financial Considerations

- Maximum Tipping Fee Cap amounts are concerning
- Solicitations/Negotiations required to determine actual pricing
- Forty (40)-year commitment
- Tipping Fee Surcharge may be higher as tons may be overstated
- Most Favored Nations (MFN) clauses in existing disposal and processing contracts

Alternative Considerations

If the SWA does not meet formation conditions or if the City of Fort Lauderdale opts not to participate in the SWA:

- The City could participate in a Cooperative Purchasing effort with other cities to maximize non-SWA volumes and deliver stronger pricing.
- The City could continue to participate in the Broward County Disposal ILA should the SWA not meet formation conditions
- The City could investigate its own solicitation process related to disposal volumes

Timelines

Deadline to approve the Facilities Amendment by resolution of the City Commission, which confirms commitment to join the SWA for a term of forty (40)-years, is August 14, 2026.

- May 5, 2026, City Commission Conference Meeting (CAM #26-0191)
 - Presentation by Solid Waste Authority of Broward County representatives
- May 19, 2026, City Commission Conference Meeting (CAM #26-0492)
 - Presentation by City staff
 - City Commission feedback
- June 16, 2026, City Commission Conference Meeting
 - Presentation by Stantec on the ten (10)-year revenue sufficiency model including the Sanitation Fund
- July 2, 2026, City Commission Regular Meeting
 - City Commission consideration to participate or opt out of the SWA