



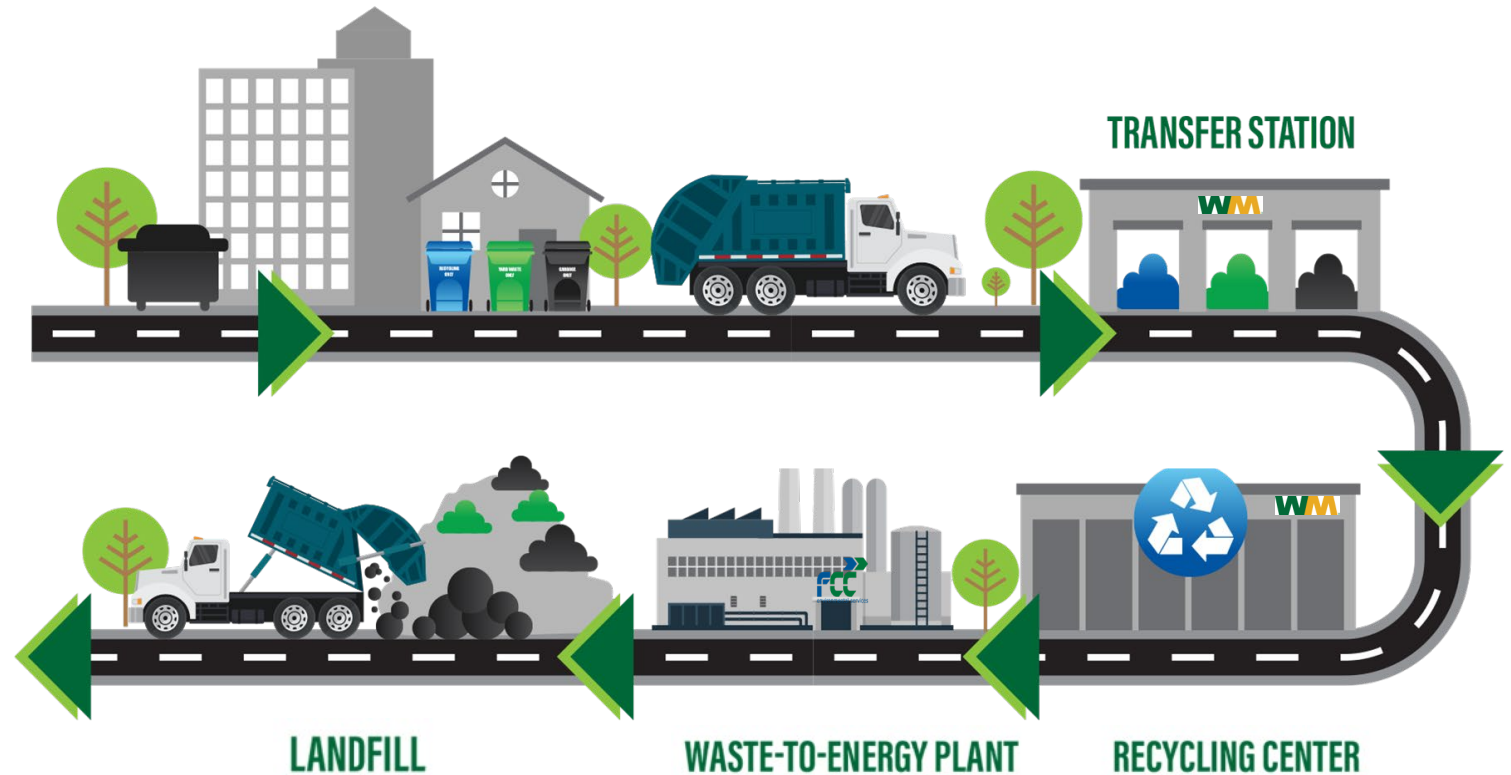
CITY OF  
FORT LAUDERDALE

# Solid Waste Authority of Broward County

*City Staff Presentation  
Public Works Department  
May 19, 2026*

# Background

- The Solid Waste Authority of Broward County (SWA) is intended to support post-collection processing and disposal activities.
- The City will maintain all responsibility for all hauling and collection programs whether or not it joins the SWA.



# Background

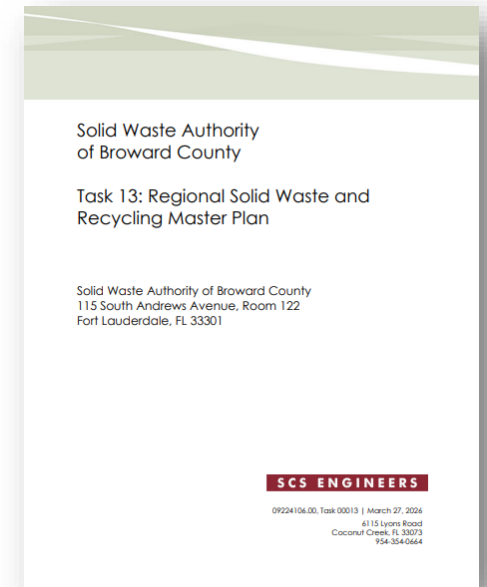


- Started as the Solid Waste Working Group in 2019 with resulting Interlocal Agreement (ILA) approved in 2023.
- Twenty-eight (28) of thirty-one (31) municipal members participate, representing approximately 1.7 million residents.
- Three (3) municipalities not participating:
  - Hallandale Beach
  - Pembroke Pines
  - Pompano Beach
- Fundamental conditions required for adoption and continuation of ILA are nearing deadlines.
- Facilities Amendment
  - Approved on March 20, 2026, by the SWA Governing Board
  - Must be approved by participating cities representing at least eighty percent (80%) of the population **and** Broward County via Commission Resolution
- Master Plan
  - Approved on April 17, 2026, by the SWA Governing Board

# ILA Background



- Initial forty (40)-year term with two, ten (10)-year extensions
- Includes Flow Control requirements:
  - Economic - Assessments, Tipping Fee, Rate surcharge
  - Regulatory - Municipal ordinances in compliance with ILA terms and conditions
  - Waste streams - Members required to use Authority facilities
- Master Plan provides recommendations on how the Authority will work
- Facilities Amendment - details Authority's end-of-life language & how to deal with Authority-owned assets/liabilities
- Includes an Indemnification provision (members not liable)



# City of Fort Lauderdale Current Service Levels - Collections

## Residential

- Twice weekly solid waste service
- Once weekly yard waste service
- Once weekly recycling service
- Once monthly bulk service
- Curbside electronics pick-up
- Curbside tire pick-up
- Household hazardous waste events

## Commercial

- Open market for solid waste and recycling
- Open market for construction and demolition debris



# City of Fort Lauderdale Current Service Levels - Disposal and Processing

- Municipal Solid Waste is flow controlled via the ILA with Broward County through the FCC waste-to-energy plant through July 2, 2028.
- Yard waste is hauled to a WM material recovery center where it is screened and processed for mulch and composting.



# City of Fort Lauderdale Current Service Levels - **Disposal and Processing**



- Bulk waste is hauled to a WM material recovery center where it is sorted for recoverable materials (metals, concrete, wood) and the residuals are taken to a landfill.
- Recycling is hauled to a state-of-the-art recycling facility owned by WM and is sorted and baled to be marketed for post-consumer use.
- Electronics are sent to Urban Mining, an e-Steward certified recycler where valuable metals are captured for recycling.



# City of Fort Lauderdale Statistics

- Fort Lauderdale represents the largest participating municipality in the Solid Waste Authority
  - Eleven-point five percent (11.5%) of the total population represented
  - Eleven-point three percent (11.3%) of the total estimated tonnage

<b><u>Commodity- City of Fort Lauderdale</u></b>	<b><u>Annual Tons 2023</u></b>
Commercial Municipal Solid Waste	179,519
Residential Municipal Solid Waste	51,884
Residential Recycling	10,944
Residential Yard Waste	16,189
Residential Bulk Waste	28,552
Commercial Construction and Demolition Debris	173,037
	460,125



# Master Plan Scenarios

- There were various scenarios contemplated for the master plan focused on recycling, reuse, diversion, zero waste, market risks, environmental, and cost efficiency.
- Scenario A is recommended by the SWA Governing Board

Scenario	Recycling (Cost)	Reuse (Cost)	Diversion (Cost)	Zero Waste Strategies (Cost)	Market Risks (Cost)	Environmental Impacts, Health and Safety (Cost)	Cost Efficiency
A	Low	Low	Medium	Low	Low	Medium	High
B	High	High	High	Medium	High	High	Medium
C	High	High	High	Medium	High	High	Medium
D	Medium	Medium	Medium	High	Medium	High	Low
E	High	High	High	Medium	High	High	Low

# Master Plan “Scenario A” and Steps Forward

Programs	Additional Facility Needs and Capacity of Each Facility - Tons Per Year (TPY)	Target Diversion Rate Increase
<ul style="list-style-type: none"> <li>• Restore Recycling Services to 20% of Broward County</li> <li>• Add segregated Curbside Yard Trash (YT) Collection</li> <li>• Add Food Waste (FW) Drop-Off Events</li> <li>• Add Permanent Household Hazardous Waste (HHW)/ Electronics/Recycling Drop-Off Sites</li> <li>• Add reduction, reuse, and diversion programs and policies.</li> </ul>	<ul style="list-style-type: none"> <li>• Two (2) Single- Stream Material Recovery Facilities (250,000 TPY each)</li> <li>• Two (2) New Organics Processing Sites with: Two (2) Mulch/ Colorizing Operations (175,000 TPY each) and One (1) New Biochar Pyrolysis operation (30,000k TPY)</li> <li>• Two (2) C&amp;D Recovery Facilities (450,000 TPY each)</li> <li>• Eight (8) Permanent Drop-Off Centers (2,400 TPY each)</li> <li>• Three (3) Transfer Stations (North, South, Central Broward County)</li> <li>• One (1) Landfill</li> </ul>	<p>+25 percentage points to 62%</p>

# Master Plan Next Steps and Impacts

- Mandatory Commercial Recycling Ordinance
- Mandatory Construction and Demolition Recycling Ordinance
- Curbside Yard Waste/Compost Collections
- Harmonized Recycling Standards
- Drop off locations
- Centralized education and outreach



# Facilities Amendment - Key Points

## SWA Allowable Facilities

- Transfer stations
- Recycling facilities
- Drop-off centers
- Organics processing facilities

## Governance & Rate Controls

- All parties – inspection rights (own expense)
- County – technical review authority
- Maximum service charges set in the master plan with any increases requiring:
  - Executive Committee & Governing Board approval
  - Municipalities representing two thirds (2/3) and Broward County approval
- Amendment needs eighty percent (80%) population approval by SWA members to own a solid waste disposal facility

# Facilities Amendment Wind Down

## Entity Takeover (Option A)

County of a successor takes over the system

### Requirements:

- County approval
- Approval from
  - Fifty-one percent (51%) of municipal parties
  - Fifty-five percent (55%) total tonnage of all waste in the county
- Outcomes:
  - All assets and liabilities transfer
  - Non-participants receive no asset value

## Transfer Solid Waste Services (Option B)

County/municipality each responsible for its own system

### Asset Transfers:

- Regional assets: County > Host City > Other Parties
- Non-regional assets: Host City > City > Other Parties
- Any assets not accepted will be sold and proceeds distributed by population
- Transferred assets must be used for solid waste for five (5)-years. At the end of the five (5)-years (or if not used for solid waste) must either pay fair market value of sell

### Outcomes:

- All assets are owned by parties or sold to third parties
- Value of all assets eventually distributed by population

# Facilities Amendment

## Maximum Service Charges

<b>Commodity</b>	<b>SWA Maximum Tipping Fee per Ton (2025)</b>
Recyclable Materials*	\$ 110.00
Yard Waste (for Disposal)	\$ 52.56
Yard Waste (for Beneficial Use)	\$ 80.00
Municipal Solid Waste	\$ 57.49
Construction and Demolition Debris/Bulk Waste	\$ 52.56

Maximum Fees escalate annually based on Producer Price Index for Solid Waste Collection (PPI-SW)

*\*Recycling fee does not reflect offset for the Average Market Value (AMV) of the materials sold to market*

# Solid Waste Authority - Financial Framework

## Phase I:

2027 Member  
Contribution

Total Annual Payments 2024 – 2027  
\$919,722

## Phase 2:

2028 to 2030  
Tip Fee Surcharge

Total Charge Estimate 2028 - 2030  
\$3,253,084

\$2.22 per ton  
across all tons

## Phase 3:

Beginning 2031  
Non-Ad Valorem  
Assessment

\$2.72 per ton across all tons  
Cost per home estimate: \$3.54

# Solid Waste Authority Membership

Residential Service per Home	City Current Cost	Maximum SWA Cost*
<i>Solid Waste</i>	\$ 6.24	\$ 6.49
<i>Yard Waste</i>	\$ 1.68	\$ 1.86
<i>Recycling</i>	\$ 3.59	\$ 2.57
<i>Bulk</i>	\$ 3.16	\$ 3.31
<b><i>Monthly Disposal Cost</i></b>	<b>\$ 14.67</b>	<b>\$ 14.23</b>
<i>Difference</i>	\$ 0.44	

\*Includes \$2.22 per ton tipping fee surcharge; Subject to annual adjustments based on PPI for Solid Waste Index

# Financial Considerations

- Maximum Tipping Fee Cap amounts are concerning
- Solicitations/Negotiations required to determine actual pricing
- Forty (40)-year commitment
- Tipping Fee Surcharge may be higher as tons may be overstated
- Most Favored Nations (MFN) clauses in existing disposal and processing contracts

# Alternative Considerations

If the SWA does not meet formation conditions or if the City of Fort Lauderdale opts not to participate in the SWA:

- The City could participate in a Cooperative Purchasing effort with other cities to maximize non-SWA volumes and deliver stronger pricing.
- The City could continue to participate in the Broward County Disposal ILA should the SWA not meet formation conditions
- The City could investigate its own solicitation process related to disposal volumes

# Timelines

Deadline to approve the Facilities Amendment by resolution of the City Commission, which confirms commitment to join the SWA for a term of forty (40)-years, is August 14, 2026.

- May 5, 2026, City Commission Conference Meeting (CAM #26-0191)
  - Presentation by Solid Waste Authority of Broward County representatives
- May 19, 2026, City Commission Conference Meeting (CAM #26-0492)
  - Presentation by City staff
  - City Commission feedback
- June 16, 2026, City Commission Conference Meeting
  - Presentation by Stantec on the ten (10)-year revenue sufficiency model including the Sanitation Fund
- July 2, 2026, City Commission Regular Meeting
  - City Commission consideration to participate or opt out of the SWA