



CITY OF
FORT LAUDERDALE

Fort Lauderdale Beach Park Conceptual Site Plan Presentation

May 5, 2026

Today's Discussion



01

History Recap



02

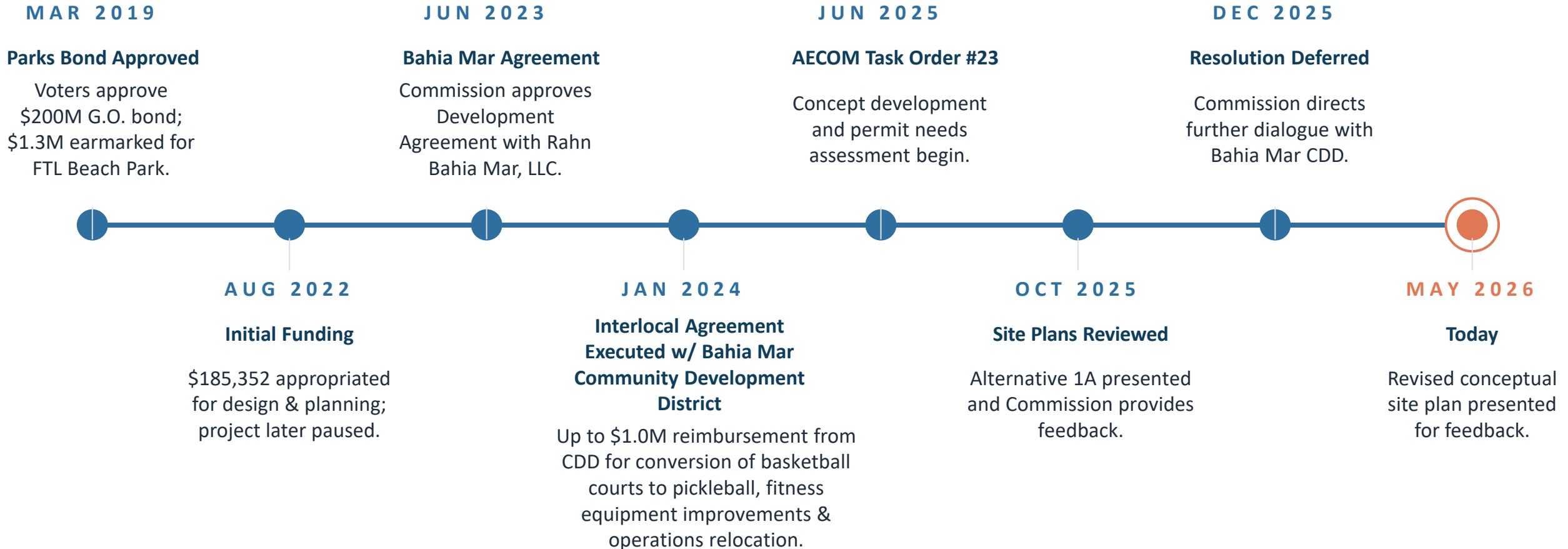
**Scope, Financials and
Conceptual Site Plan**



03

Gather Feedback

The Project Journey



Proposed Park Improvements*

Six (6) coordinated amenities, connected by accessible pathways and supported by native landscaping.

*Proposed improvements are subject to permitting, regulatory approval, environmental review, and final engineering.



Basketball Courts

Existing courts retained in current location. Full resurfacing plus new backboards, rims, and nets.



Four Pickleball Courts

New courts located south of the basketball courts.



Outdoor Fitness Area

New fitness equipment installation.



Two Flex-Green Spaces

Synthetic passive-use lawns for yoga, stretching, and casual seating.



Sand Pathway Network

Hard-packed sand pathways linking all amenities — safe, accessible, pedestrian-friendly.



Native Landscaping

Extensive plantings with irrigation, designed to complement the surrounding beach environment.

Budget Considerations

\$1.3M

PARKS BOND

\$1.0M*

CDD CONTRIBUTION

\$2.5M

OPINION OF COST

C U R R E N T P O S T U R E

**CDD funding is limited to improvements for the basketball courts, pickleball courts, outdoor fitness equipment, and relocation of the storage/maintenance yard beneath the Bahia Mar pedestrian bridge.*

Next Steps & What to Expect

Subject to Commission direction today, the project advances on the following schedule.



Conceptual Site Plan Overview



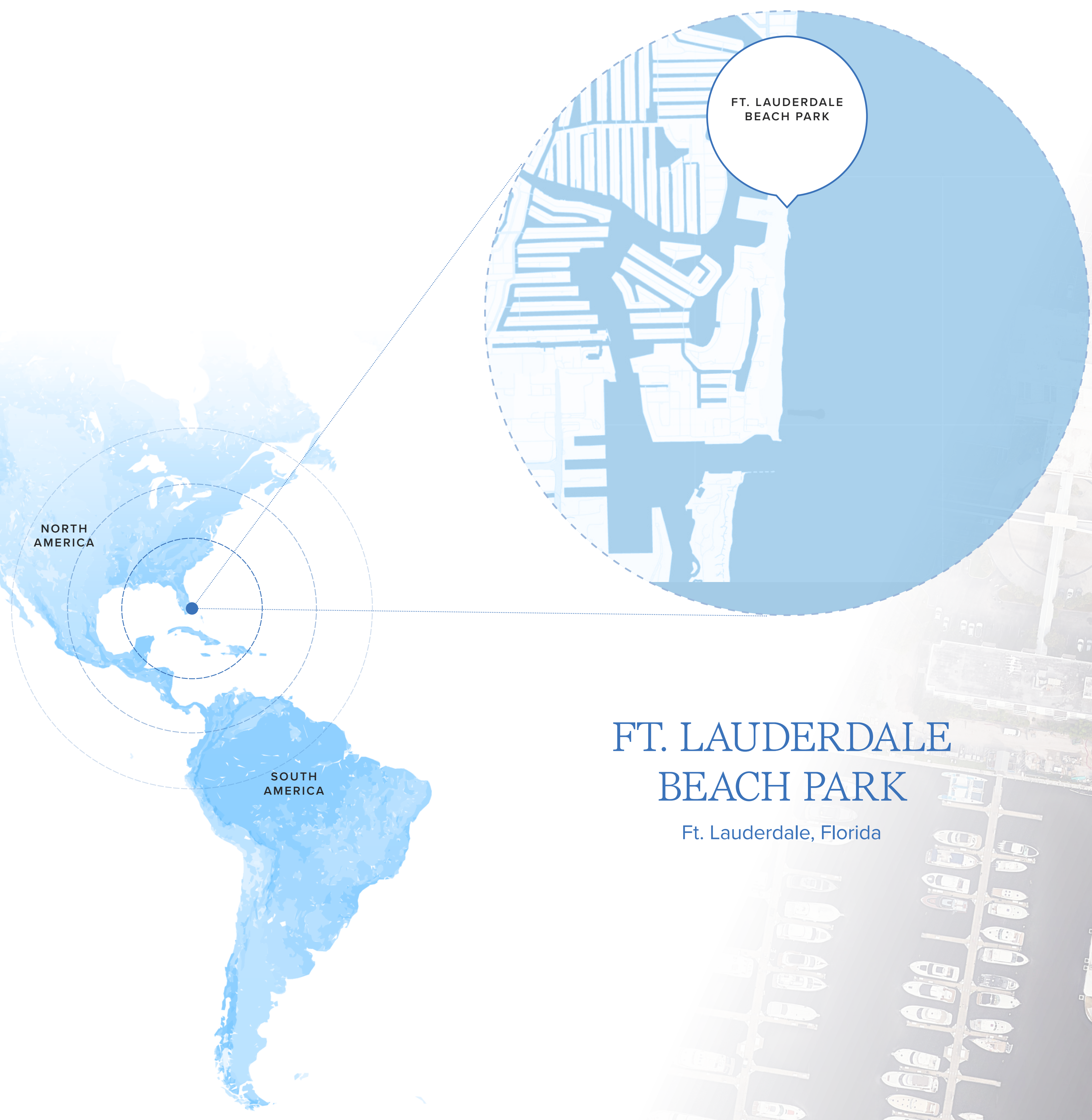
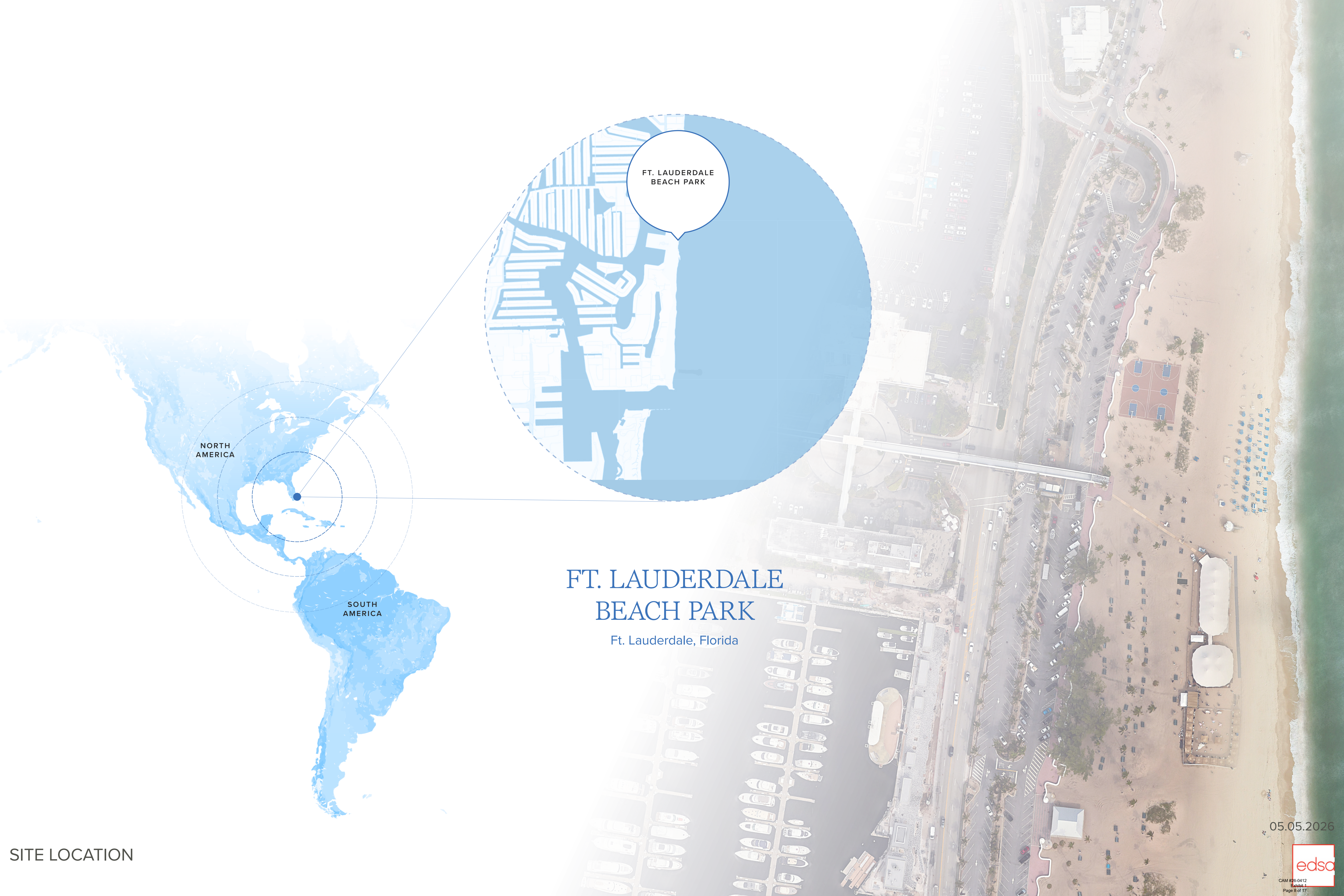
PRESENTER

Michael G. Gehart

PLA, ASLA

Vice President, EDSA, Inc.

1512 E. Broward Boulevard, Suite 110
Fort Lauderdale, Florida 33301



FT. LAUDERDALE
BEACH PARK

NORTH
AMERICA

SOUTH
AMERICA

FT. LAUDERDALE BEACH PARK

Ft. Lauderdale, Florida

SITE LOCATION

05.05.2026





E SUNRISE BLVD
HUGH TAYLOR BIRCH
STATE PARK

BONNET HOUSE
MUSEUM & GARDENS

E LAS OLAS BLVD

LAS OLAS OCEANSIDE
PARK

DC ALEXANDER
PARK

FT. LAUDERDALE
BEACH PARK

05.05.2026

The addition will include fully refurbished basketball courts with new backboards, rims, and nets, four new pickleball courts, and a dedicated fitness area.

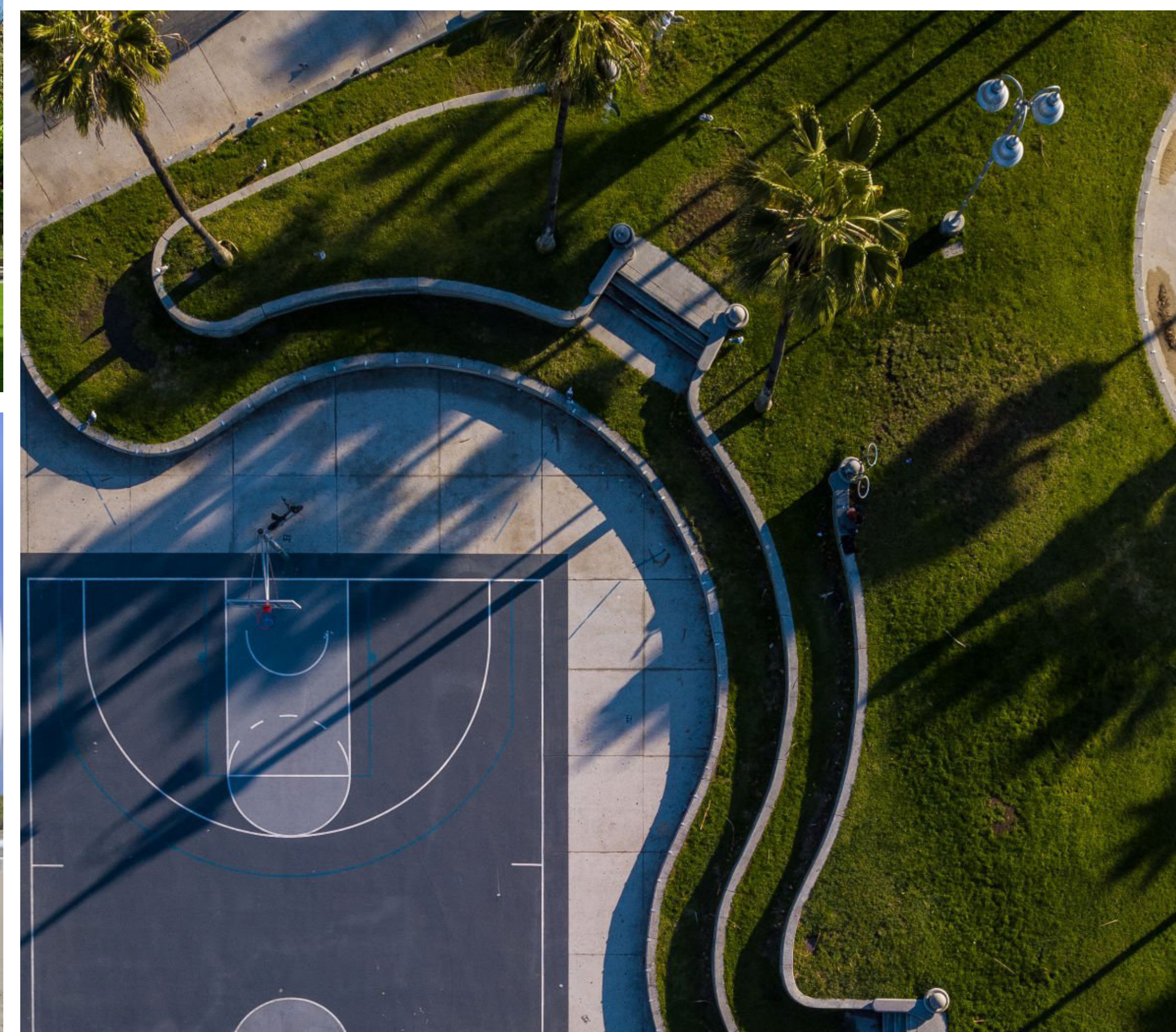
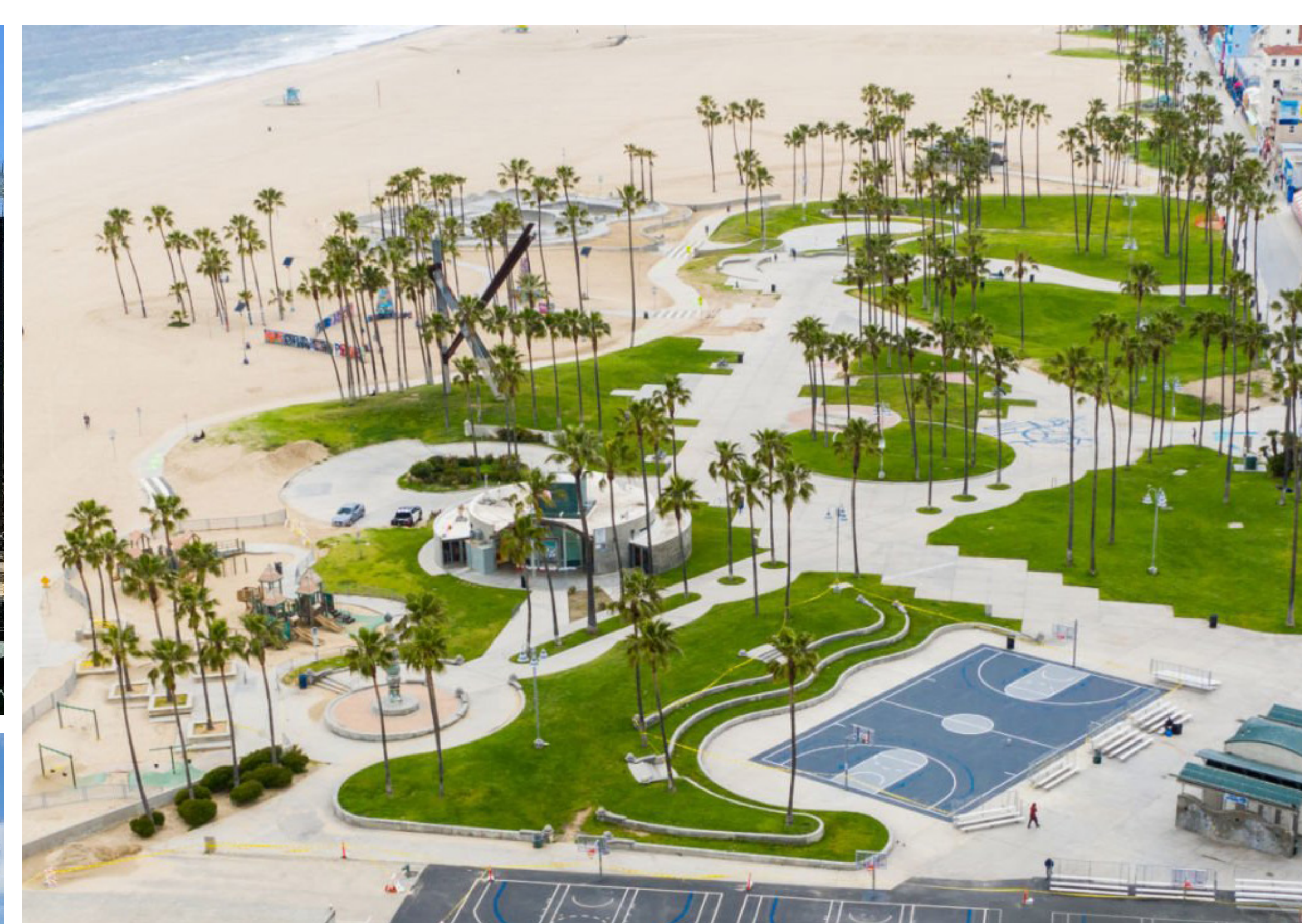


OVERALL SITE - LOOKING NORTHEAST



Program Areas

- CENTRAL PLAZA - 1,700 SF
- STORAGE UNITS - 550 SF
- PICKLEBALL - 7,200 SF
- OUTDOOR GYM - 2,400 SF
- FLEX LAWN - 5,000 SF
- BASKETBALL COURTS - 9,300 SF





Two flexible lawn spaces will support city programming such as yoga, stretching, tai chi, or casual seating and relaxation.

FLEX LAWN AREAS - LOOKING SOUTH



Built for easy maintenance and everyday use, this space will be widely used by residents and visitors, enhancing the park experience and reinforcing the identity of Fort Lauderdale Beach.

OUTDOOR GYM - LOOKING SOUTHEAST

The landscape incorporates native plants and an integrated irrigation approach that allows water to naturally absorb into nearby beach areas, promoting sustainability.



05.05.2026

PICKLEBALL COURTS - LOOKING NORTHEAST

All elements are seamlessly connected through well designed, hard packed sand pathways that create pedestrian friendly, meandering circulation.



DS:05.2026

BASKETBALL COURTS - LOOKING NORTH



CITY OF
FORT LAUDERDALE

THANK YOU