



CITY OF
FORT LAUDERDALE

Water and Wastewater Consent Orders Update and Inflow and Infiltration (I&I) Program Development

April 21, 2026

Presentation Outline

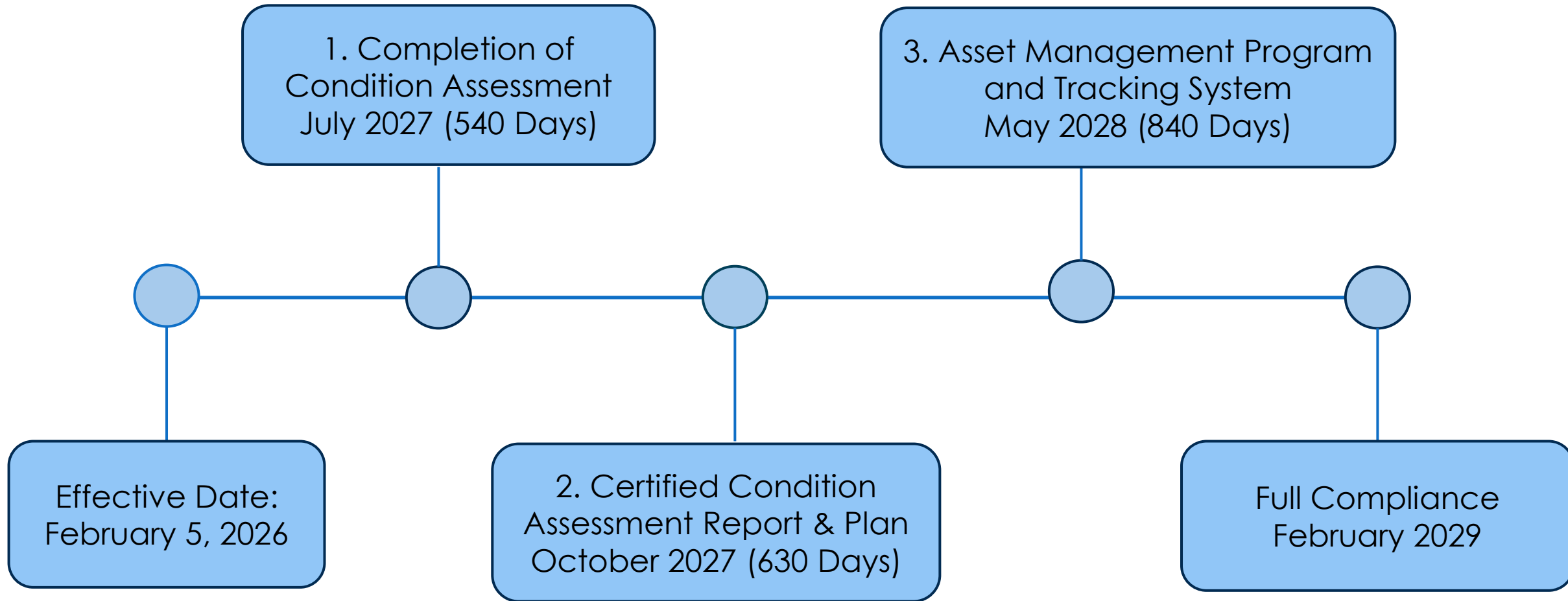
Consent Orders with Florida Department of Environmental Protection (FDEP)

- Water Consent Order (OGC No. 24-2464)
- Wastewater Consent Order (OGC No. 16-1487)
 - Amended Consent Order
 - Pending Second Amended Consent Order, Addressing Inflow & Infiltration

Water Consent Order

The City entered into the Water Consent Order due to repeated water main breaks between September 2023 and April 2025 and the failure to maintain the system in good operating condition, as required by Rule 62-555.350(2), Florida Administrative Code (F.A.C.).

Water Consent Order Requirements



Water Consent Order Requirements

1. Condition Assessment - July 2027 (540 Days)

Complete a system-wide condition assessment performed by a Florida-licensed professional engineer, including all pipes six inches (6") and larger, storage facilities, valves, and pumps.

2. Certified Condition Assessment Report & Plan - October 2027 (630 Days)

Prepared, signed, and sealed by a Florida-licensed professional engineer, the report summarizes the results of the system-wide condition assessment.

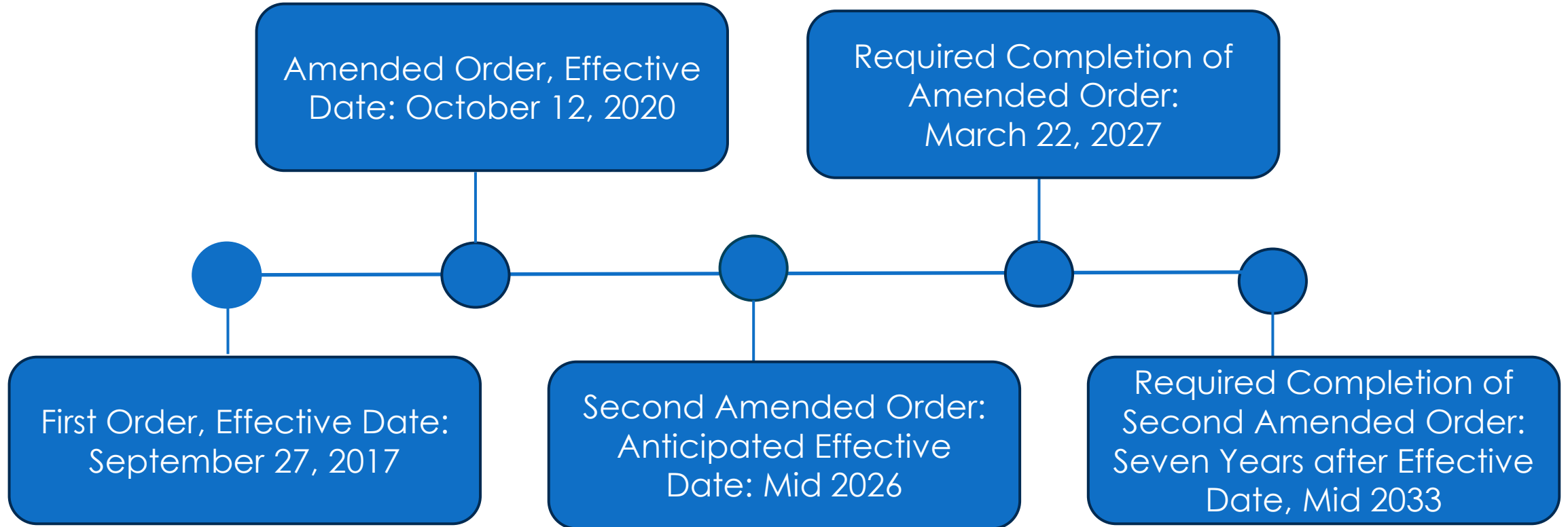
3. Asset Management Program & Tracking System - May 2028 (840 Days)

Implement a comprehensive Asset Management Program supported by a tracking system.

Wastewater Consent Order

The City entered into the Wastewater Consent Order due to repeated sanitary sewer overflows (SSOs) and unpermitted wastewater discharges that violated state regulations.

Wastewater Consent Order



Wastewater Consent Order

- **72 of 76** Milestones are completed
- Four (4) Projects still ongoing



CITY OF
FORT
LAUDERDALE

Amended Wastewater Consent Order, Remaining Projects

1. NE 38 Street and NE 50 Court - Forty-Two-Inch (42") and Twenty-Four-Inch (24") Force Mains

Rehabilitate or replace approximately 8,000 linear feet of forty-two-inch (42") ductile iron pipe force main along NE 38 Street and install approximately 2,500 linear feet of new twenty-four-inch (24") force main along NE 50 Court.



2. SE 9 and SE 10 Avenue - Forty-Eight-Inch (48") to Fifty-Four-Inch (54") Force Main to George T. Lohmeyer (GTL) Wastewater Treatment Plant

Rehabilitate or replace approximately 19,400 linear feet of existing forty-eight (48)-inch to fifty-four (54)-inch force main along SE 9th and SE 10 Avenues leading to GTL.



Amended Wastewater Consent Order, Remaining Projects, continued

3. Effluent Force Main from GTL Wastewater Treatment Plant to Injection Wells

Rehabilitate or replace the prestressed concrete cylinder pipe (PCCP) effluent force main extending from the GTL facility to the deep injection wells.

4. Installation of Permanent Emergency Generators at GTL Wastewater Treatment Plant

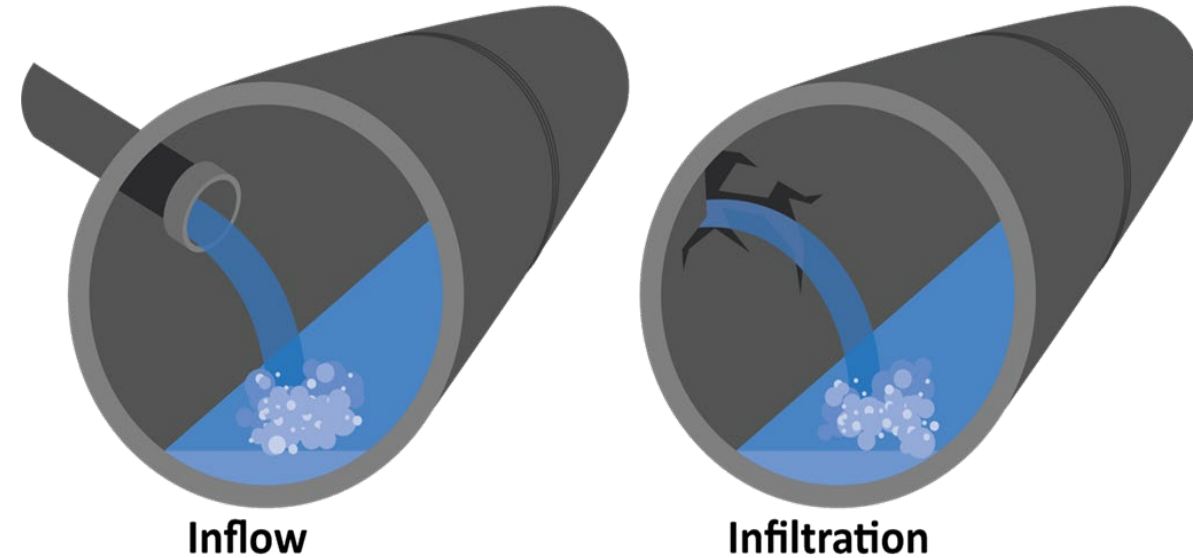
Four (4) backup generators for the effluent pumps have been installed. Electrical and control panel work is still in progress.



Pending - Second Amendment to Consent Order Addressing Inflow & Infiltration

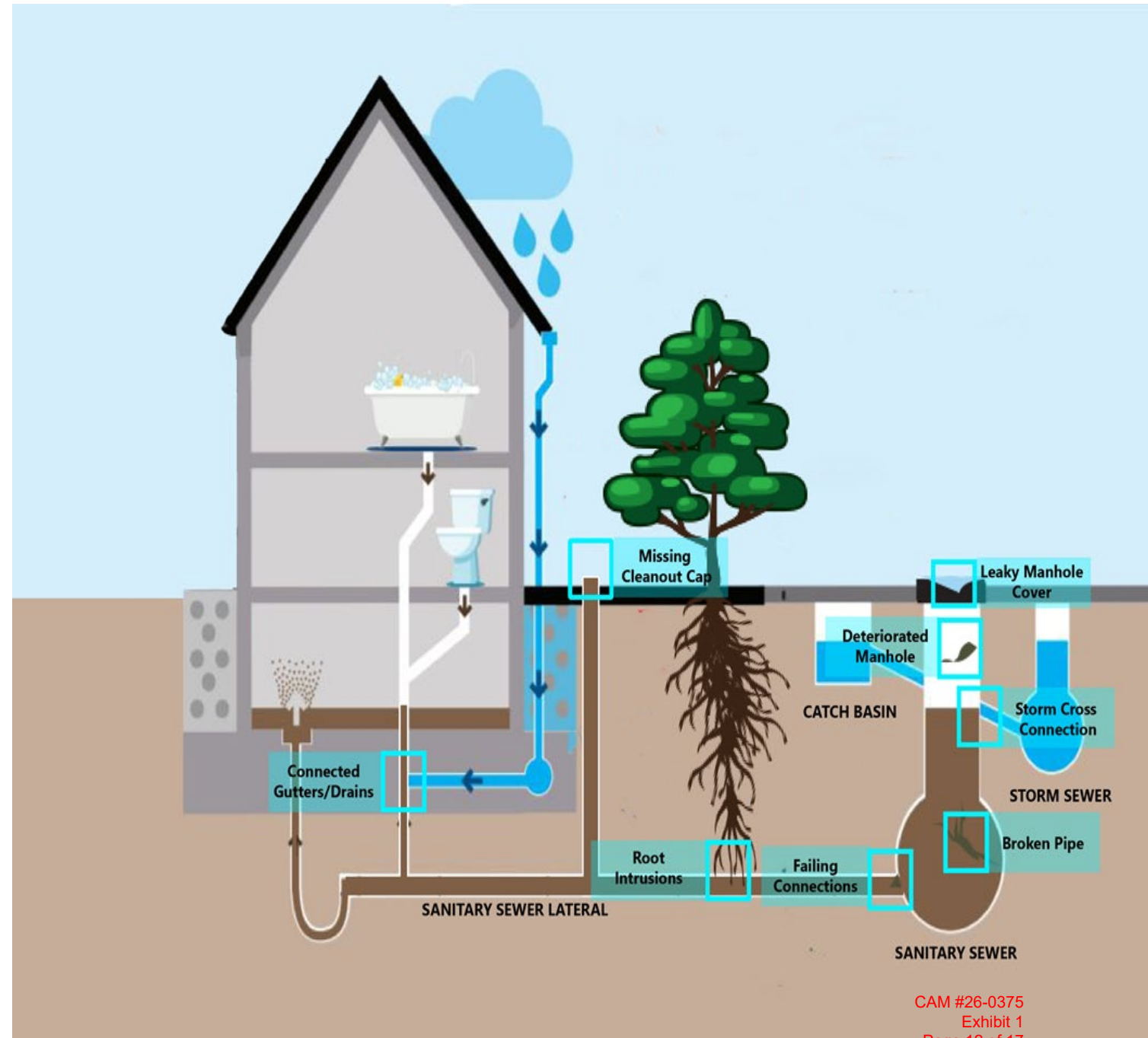
Why I&I Matters

- **Adds unnecessary flow:** Rainwater and groundwater enter the sewer system and take up capacity
- **Increases risk of overflows:** Especially during wet weather events
- **Drives up costs:** Clean water is treated like wastewater
- **Impacts system performance:** Added strain on pipes, pumps, and treatment facilities
- **Bottom Line:** Reducing I&I improves reliability, lowers costs, and helps maintain compliance.



Causes of Inflow & Infiltration

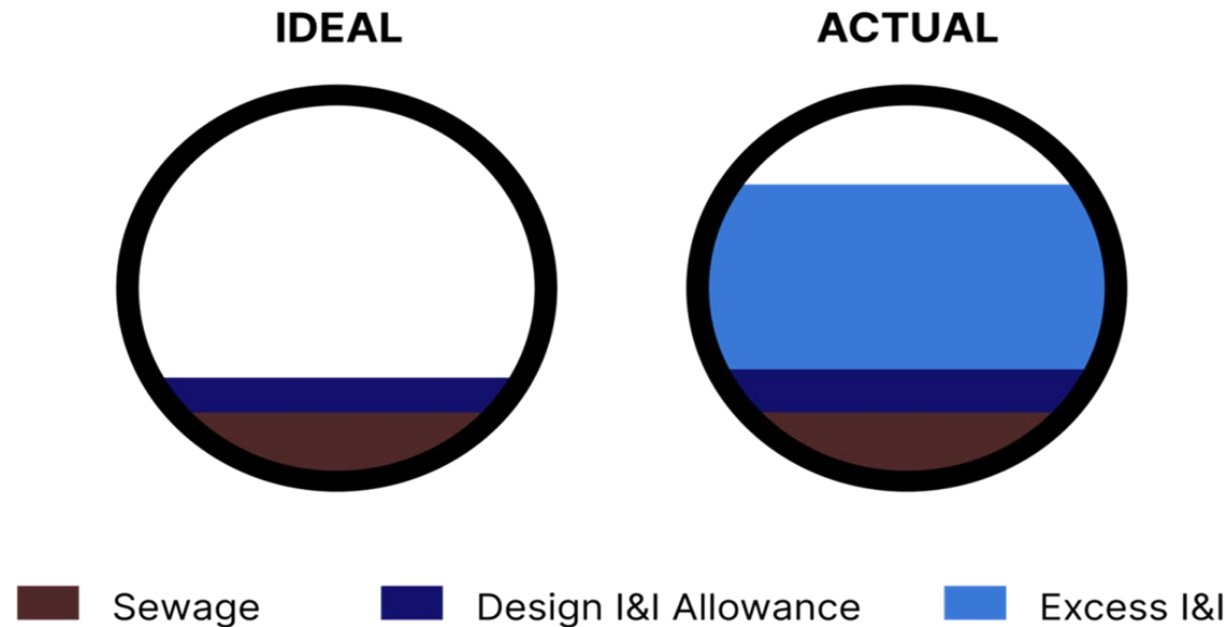
- Damaged or defective manholes
- Missing clean-out caps
- Broken lateral pipes
- Root intrusion
- Unauthorized connections to the sanitary sewer system



Pending - Second Amendment to Consent Order Addressing Inflow & Infiltration

Infiltration & Inflow (I&I) Program Requirements

- Reduce excessive I&I across the wastewater collection system
- Ensure compliance with regulatory flow limits and system capacity



Pending - Second Amendment to Consent Order, Addressing Inflow & Infiltration

Phase 1 – Evaluation Plan and Systemwide Engineering Evaluation Within
180 days

Phase 2 – Develop Phased Rehabilitation Plan and Schedule
Upon approval of the Evaluation Plan

Overall Compliance Timeline

All corrective actions completed within seven (7) years

Ongoing Inflow & Infiltration Program

The City's ongoing I&I program positions the City for Consent Order implementation

- 1. Early System Evaluation** (Consent Order Phase 1)
 - Eliminates startup lag after Consent Order execution
- 2. Immediate Readiness for Evaluation Plan Submittal** (Consent Order Phase 1)
- 3. Established Baseline & Flow Analytics** (Consent Order Phase 1 & 2)
- 4. Identified Priority Basins and Defects** (Consent Order Phase 1 & 2)
- 5. Rehabilitation Already Underway** (Consent Order Phase 2)
- 6. Data Integration & Decision Framework in Place** (Consent Order Phase 2)

Ongoing Inflow & Infiltration Program Progress

Projects Completed to Date

- **Basin A21 Sewer Repairs (P12049)**
Flagler Village Civic Association (P12049)
- **Basin B14 CCTV Evaluation (P12618)**
Lauderdale Beach/Dolphin Isles/Central Beach Alliance Associations

Projects in Construction

- **CCTV Evaluation - Priority 1A Basins (P12214)**
(A99 Tarpon River, A27 Middle River Terrace, A29 South Middle River & Middle River Terrace, A14 Lake Ridge/Poinsettia Heights/Laudergate Isles/Bal Harbour, A15 Rio Vista, D8 Nurmi Isles, D11 Hendrick and Venice Isles, D21 Riviera Isles, D9 Nurmi Isle, D19 Las Olas Isles, D2 Seven Isles, D7 Nurmi Isles, D37 Las Olas Isles, D20 Las Olas Isles, D24 Sunrise Key)
- **P12214 CCTV Evaluation - Priority 1B Basins**
(B4 Sunrise Intracoastal & Lake Estates, B11 Knoll- Ridge South/North Galt Estate/Landings/Coral Ridge Country Club, B1 Coral Ridge Country Club Estates & Coral Ridge, B10 Boulevard Park Isle/Imperial Point/Knoll Ridge North, A17 Victoria Park, B12 Bay Colony, B13 Coral Ridge Isles/Imperial Pont/Boulevard Park Isles).

Ongoing Inflow & Infiltration Program Progress

Projects in Construction, continued

- **Smoke Testing Sewer Repairs - 5 Basins (P11563/P11566/P11991/P12055/P12456)**
A7 Beverly Heights/Downtown Fort Lauderdale/Colee Hammock, A19 Victoria Park, A18 Dorsey Riverbend, D40 Central Beach Alliance, D43 Rio Vista/Harbordale
- **Sewer Repairs – Phase 1 & 2 (P12464)**
Basin A11 Tarpon River/Downtown Fort Lauderdale Civic Association

Projects Pending Bidding/Award

- **Sewer Repairs - Basin B6 (P11664)**
Coral Ridge Civic Association
- **P12465 Sewer Repairs (P12465)**
Basin D34 Harbor Beach
- **P12214 Sewer Repairs (P12214)**
Citywide Contract for Inflow & Infiltration Repairs