

RESOLUTION NO. 21-

A RESOLUTION OF THE CITY COMMISSION OF THE CITY OF FORT LAUDERDALE, FLORIDA, APPROVING THE NAMING OF A PORTION OF THE RIVERWALK WALKING TRAIL, ALONG THE NORTH SIDE OF THE NEW RIVER, BETWEEN SW 4TH AVENUE AND SW 2ND AVENUE, PARTIALLY LOCATED IN THE H-1 HISTORIC PRESERVATION ZONING DISTRICT OF FORT LAUDERDALE, AS THE "EDWARD D. STONE JR. TRAIL AT RIVERWALK" AND AUTHORIZING THE INSTALLATION OF TWO MONUMENT SIGNS WITHIN SPECIFIED BOUNDARIES APPROVED BY THE HISTORIC PRESERVATION BOARD; AND PROVIDING FOR AN EFFECTIVE DATE.

WHEREAS, the late Edward D. Stone Jr. was a visionary, influencer, pioneer, innovator and collaborator in the areas of large-scale planning, landscape architecture and urban design and, in 1960, he founded the Edward D. Stone Jr. and Associates (EDSA), with its headquarters in the City of Fort Lauderdale. Edward D. Stone Jr. and Associates, P.A. was incorporated in 1969, and is also known as Edward D. Stone Jr. and Associates, Inc.; and

WHEREAS, members of EDSA contacted the City with a proposal to name a portion of the Riverwalk Walking Trail, along the north side of the New River, between SW 4th Avenue and SW 2nd Avenue, partially located in the H-1 Historic Preservation Zoning District of the City of Fort Lauderdale, as the "Edward D. Stone Jr. Trail at Riverwalk" and install two monument signs to commemorate Mr. Stone's legacy, with one monument sign lying within the boundaries of the H-1 Historic Preservation Zoning District; and

WHEREAS, in compliance with the Guidelines for Naming Parks, Recreation Areas and Major Facilities, the Fort Lauderdale Parks, Recreation and Beaches Board, at its June 23, 2021 meeting, recommended the City Commission approves EDSA's request to rename a portion of the Riverwalk Walking Trail as the "Edward D. Stone Jr. Trail at Riverwalk," as delineated in the map attached as "Exhibit 1," with EDSA to remain solely responsible for all costs associated with both monument signs; and

WHEREAS, in accordance with the rules and regulations outlined in the Unified Land Development Regulations (ULDR) for the City of Fort Lauderdale, the Fort Lauderdale Historic Preservation Board, at its September 1, 2021 meeting, approved a Certificate of Appropriateness for Major Alteration for the installation of one monument sign within the boundaries of the H-1 Historic Preservation Zoning District, with no applicable conditions and described more specifically in attached "Exhibit 2;" and

WHEREAS, the City Commission has determined EDSA's request meets the Guidelines for Naming of City Parks, Recreation Areas and Major Facilities and desires to approve the naming of a portion of the Riverwalk Walking Trail, along the north side of the New River, between SW 4th Avenue and SW 2nd Avenue, partially located in the H-1 Historic Preservation Zoning District of the City of Fort Lauderdale, as the "Edward D. Stone Jr. Trail at Riverwalk," and authorize the installation of two monument signs to commemorate Mr. Stone's legacy, with one monument sign lying within the boundaries of the H-1 Historic Preservation Zoning District, as approved by the Fort Lauderdale Historic Preservation Board, with EDSA to remain solely responsible for all design, fabrication and maintenance costs associated with both monument signs and the trail area marker(s) or sign(s).

NOW, THEREFORE, BE IT RESOLVED BY THE CITY COMMISSION OF THE CITY OF FORT LAUDERDALE, FLORIDA:

SECTION 1. That the recitals set forth above are incorporated in this Resolution.

SECTION 2. The naming of a portion of the Riverwalk Walking Trail, along the north side of the New River, between SW 4th Avenue and SW 2nd Avenue, partially located in the H-1 Historic Preservation Zoning District of the City of Fort Lauderdale, as the "Edward D. Stone Jr. Trail at Riverwalk" is hereby approved, and the installation of two monument signs to commemorate Mr. Stone's legacy, with one monument sign lying within the boundaries of the H-1 Historic Preservation Zoning District, as approved by the Fort Lauderdale Historic Preservation Board, is hereby authorized.

SECTION 3. As a condition precedent to the installation of two monument signs within the Edward D. Stone Jr. Trail at Riverwalk, EDSA shall enter into a maintenance agreement with the City of Fort Lauderdale which shall memorialize that EDSA remains solely responsible for all design, fabrication and maintenance costs associated with both monument signs and the trail area marker(s) or sign(s).

SECTION 4. That any prior Resolutions or parts thereof to the extent of conflict with this Resolution are hereby repealed.

SECTION 5. That the City Clerk is directed to provide a copy of this Resolution to the City Engineer for future inclusion in the "Official Map of the City of Fort Lauderdale."

SECTION 6. That this Resolution shall be in full force and effect immediately upon and after its passage.

RESOLUTION NO. 21-

PAGE 3

ADOPTED this _____ day of _____, 2021.

Mayor
DEAN J. TRANTALIS

ATTEST:

City Clerk
JEFFREY A. MODARELLI

EXHIBIT 1
MAP - EDWARD D. STONE JR. TRAIL AT RIVERWALK
PROPOSED MONUMENT AT RIVERWALK

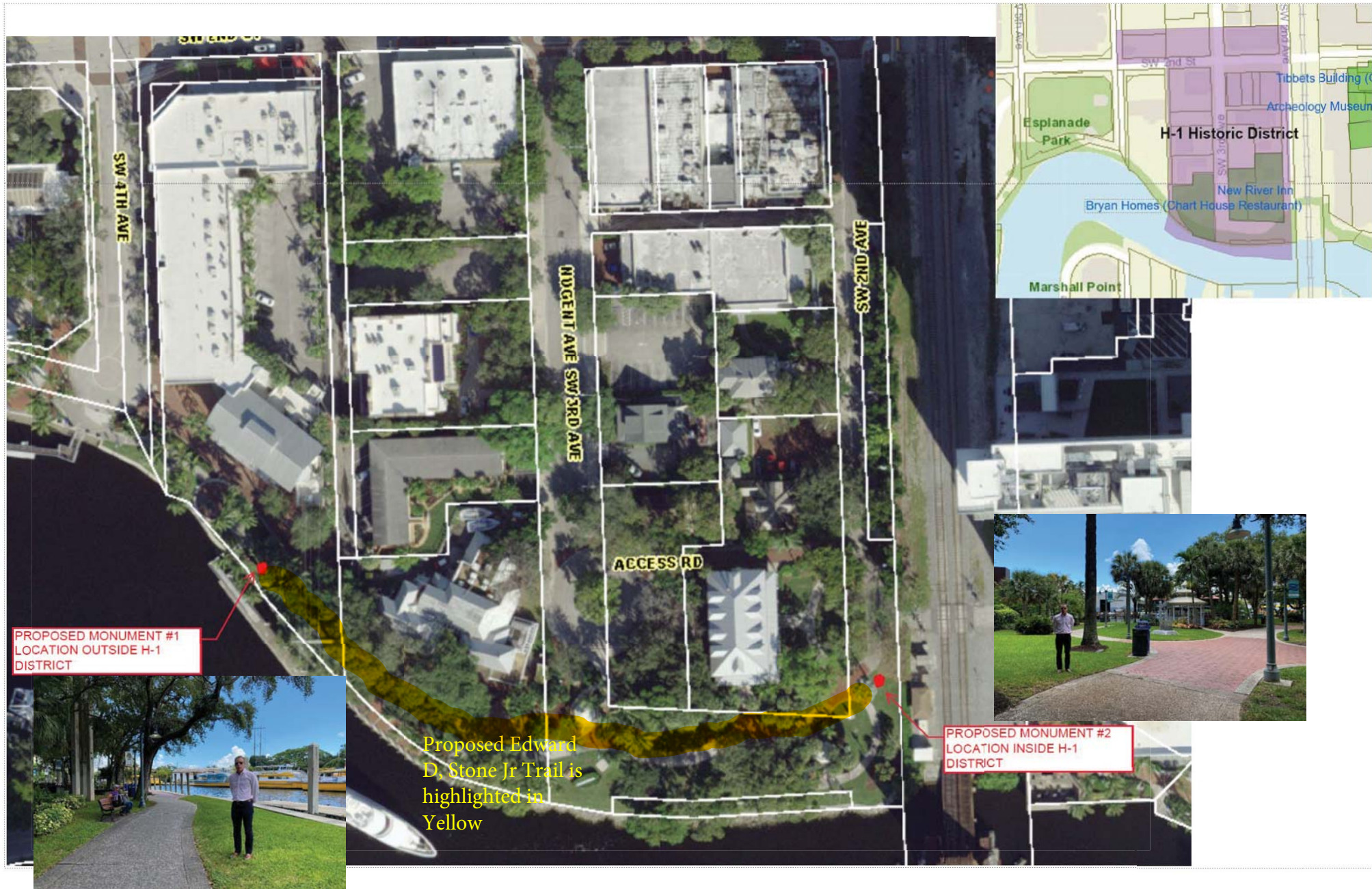


EXHIBIT 2

GENERAL LOCATION

Approximately 420 feet south of the corner of SW 2nd Street and SW 2nd Avenue

LEGAL DESCRIPTION

A PORTION OF SOUTHWEST 2 AVENUE (MOFFATT AVENUE PLATTED) RIGHT OF WAY ADJACENT TO LOT 11, BLOCK "C", "TOWN OF FORT LAUDERDALE" ACCORDING TO THE PLAT THEREOF, RECORDED IN PLAT BOOK "B", PAGE 40 OF THE PUBLIC RECORDS OF BROWARD COUNTY, FLORIDA, BEING MORE PARTICULARLY DESCRIBED AS FOLLOWS: A MONUMENT AREA 6.00 FEET IN WIDTH LYING 3.00 FEET ON EACH SIDE OF THE FOLLOWING DESCRIBED CENTERLINE. THE SIDES OF SAID MONUMENT AREA SHALL BE LENGTHENED OR SHORTENED AS NECESSARY TO TERMINATE AT THE SOUTHEAST PERIMETER CONCRETE BORDER EDGE.

COMMENCING AT THE SOUTHEAST CORNER OF SAID BLOCK "C"; THENCE NORTH 02°08'01" WEST ALONG THE EASTERLY LINE OF SAID BLOCK "C", A DISTANCE OF 43.80 FEET; THENCE NORTH 87°52' 11" EAST, A DISTANCE OF 12.93 FEET TO THE CENTERLINE OF A 1.00 FOOT WIDE CONCRETE BORDER; THENCE SOUTH 38°54'52" EAST ALONG SAID BORDER CENTERLINE, A DISTANCE OF 10.82 FEET TO THE SOUTHEAST EDGE OF A PERIMETER CONCRETE BORDER AND THE POINT OF BEGINNING; THENCE CONTINUE SOUTH 38°54'52" EAST, A DISTANCE OF 5.00 FEET TO THE POINT OF TERMINUS. SAID LANDS LYING, BEING AND SITUATED THE CITY OF FORT LAUDERDALE, FLORIDA. CONTAINING 30 SQUARE FEET MORE OR LESS.