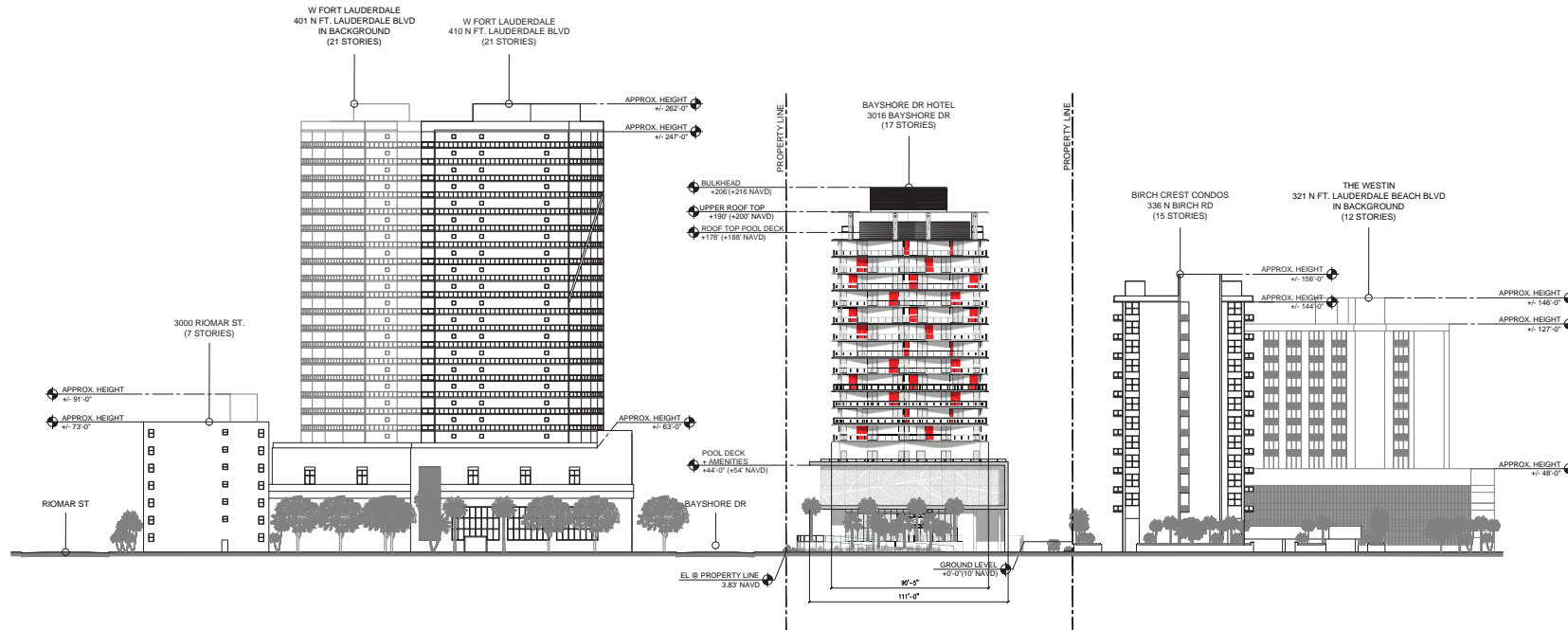


IMPACT RESISTANT ALUM./GLASS WINDOWS/DOORS UNDER
SEPARATE PERMIT. CONTRACTOR TO SUBMIT SHOP
DRAWINGS TO A/E AND BUILDING DEPARTMENT FOR REVIEW
AND APPROVAL PRIOR FABRICATION AND INSTALLATION



ISSUE DATE: 12.06.2018		
No.	DATE	DESCRIPTION

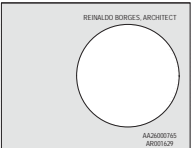
All ideas, designs, arrangements, plans and specifications indicated or represented by this drawing are hereby acknowledged as the property of Borges + Associates, P.A., and were created, owned and developed for use on and in connection with the specified project. No copies, transmissions, reproductions, or electronic manipulation of any portion of these drawings in whole or in part are to be made without the express written permission of Borges + Associates, P.A.

All copyrights reserved © 2018

borges + associates

ARCHITECTS

999 Brickell Ave., Suite 700, Miami, Florida 33131
305.374.8111 phone • 305.374.8071 fax



PROJECT TEAM

CIVIL ENGINEER / LANDSCAPE ARCHITECT
 K&H ASSOCIATES INC.
 2140 NW 82 AVE
 CORAL GABLES, FL 33134
 305.467.5475

LIFE SAFETY
 SLS CONSULTING INC.
 350 PALMDALE AVE
 CORAL GABLES, FLORIDA 33134
 305.461.1800

PROJECT NAME

**BAYSHORE DR
HOTEL**

3016 BAYSHORE DR.
FT. LAUDERDALE, FL 33304

PROJECT NUMBER

**WEST CONTEXT
ELEVATION**

SCALE

AS SHOWN

DRAWING NUMBER

A-506

IMPACT RESISTANT ALUM/GLASS WINDOWS/DOORS UNDER
SEPARATE PERMIT. CONTRACTOR TO SUBMIT SHOP
DRAWINGS TO A/E AND BUILDING DEPARTMENT FOR REVIEW
AND APPROVAL PRIOR FABRICATION AND INSTALLATION

ISSUE DATE: 12.06.2018		
No.	DATE	DESCRIPTION
1	7.12.21	ADMINISTRATIVE REVIEW
AFTER		

All ideas, designs, arrangements, plans and specifications indicated or represented by this drawing are owned by and are the property of Borges & Associates, P.A., and were created, refined and developed by you on and in connection with the specified project. No reuse, reproduction, dissemination or disclosure of any portion of these drawings in whole or in part can be made without the express written consent of Borges & Associates, P.A.

All copyrights owned by Borges & Associates, P.A.

borges & associates
ARCHITECTS
3000 RICHMAR ST., SUITE 200
FT. LAUDERDALE, FL 33304
(954) 341-1111



PROJECT TEAM

ARCHITECT
WMA/DOUGLAS ARCHITECT
3000 RICHMAR ST., SUITE 200
FT. LAUDERDALE, FL 33304
(954) 341-1111

ENGINEER
SLS
3000 RICHMAR ST., SUITE 200
FT. LAUDERDALE, FL 33304
(954) 341-1111

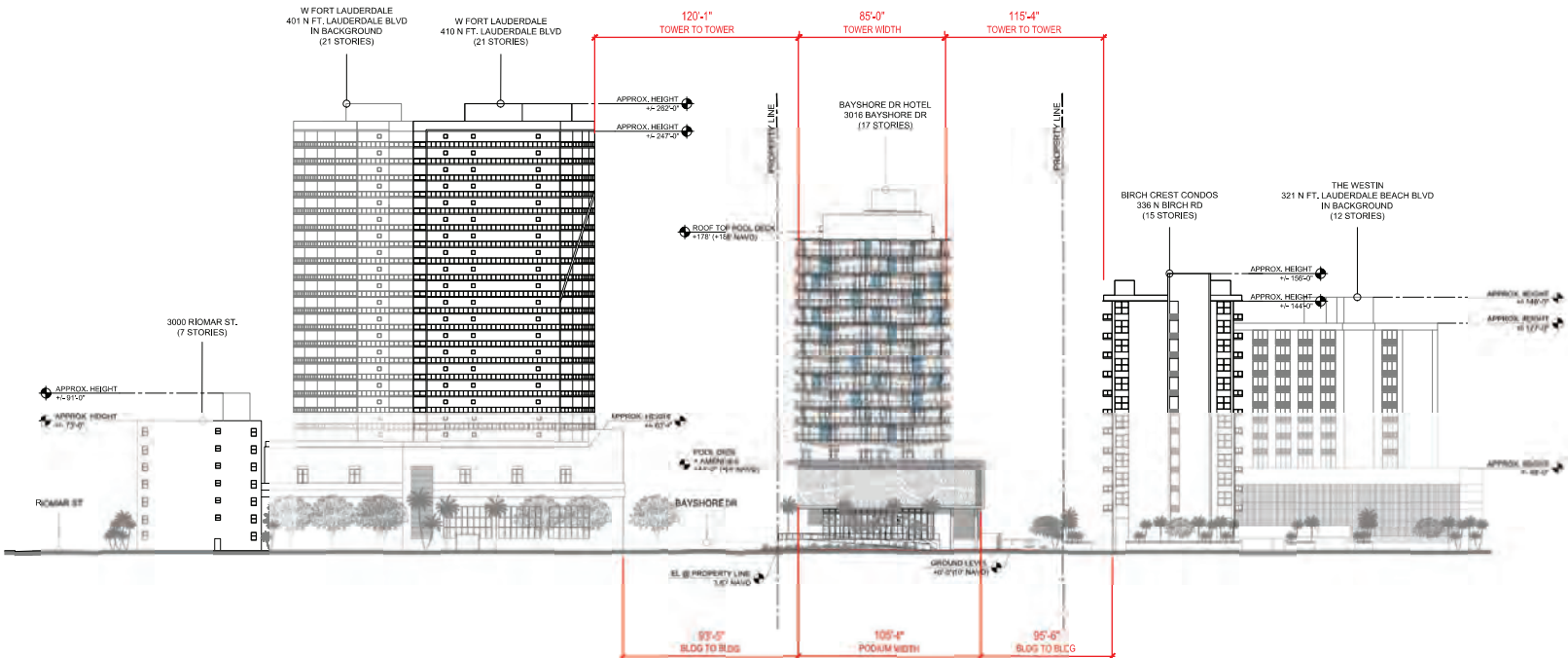
LIFE SAFETY
SLS
3000 RICHMAR ST., SUITE 200
FT. LAUDERDALE, FL 33304
(954) 341-1111

PROJECT NAME
BAYSHORE DR HOTEL
3016 BAYSHORE DR.
FT. LAUDERDALE, FL 33304

PROJECT NUMBER
WEST CONTEXT ELEVATION

SCALE
AS SHOWN

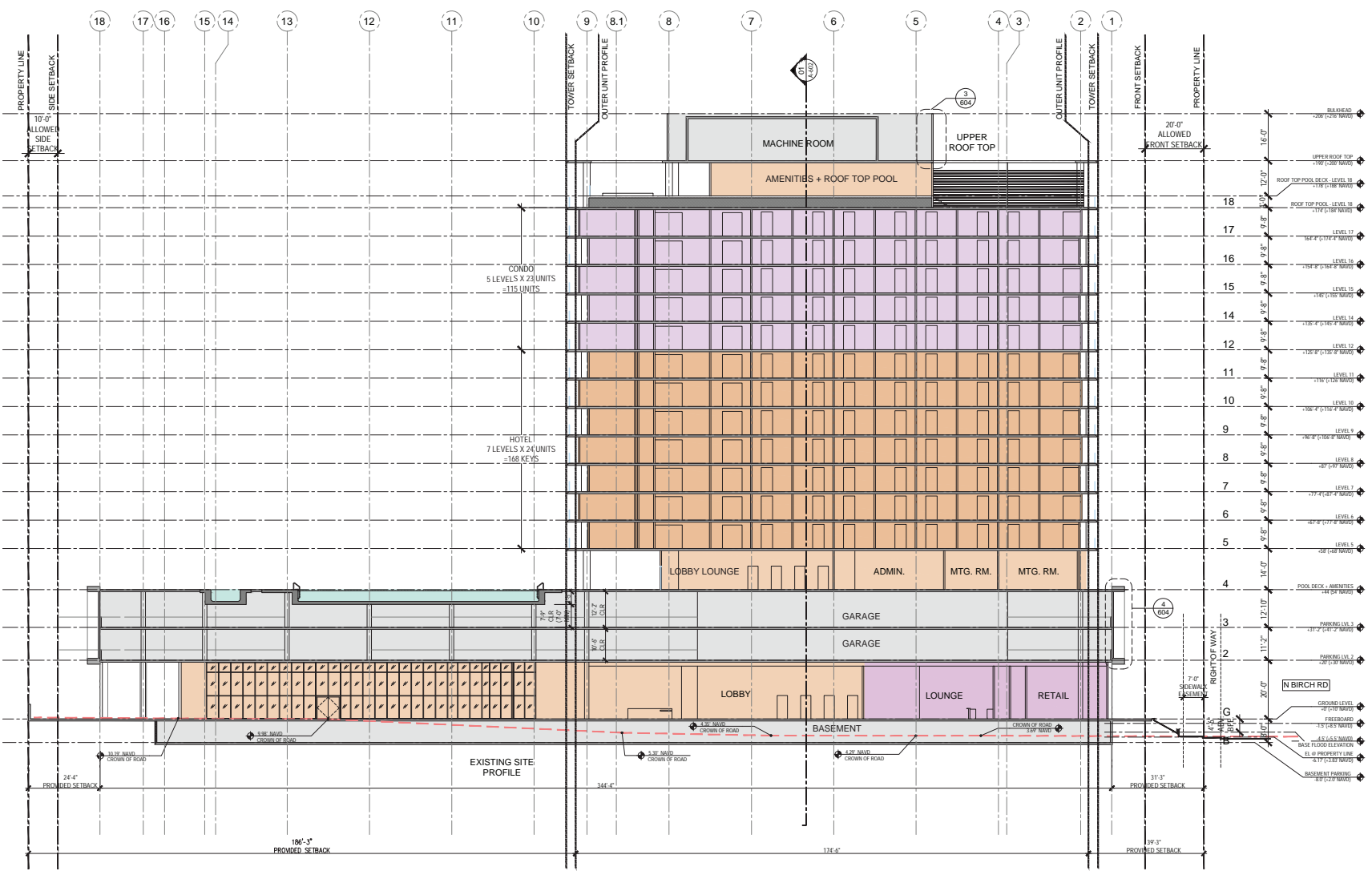
DRAWING NUMBER
A-506



01 WEST CONTEXT ELEVATION

1/32" = 1'-0"

IMPACT RESISTANT ALUM./GLASS WINDOWS/DOORS UNDER SEPARATE PERMIT. CONTRACTOR TO SUBMIT SHOP DRAWINGS TO A/E AND BUILDING DEPARTMENT FOR REVIEW AND APPROVAL PRIOR FABRICATION AND INSTALLATION

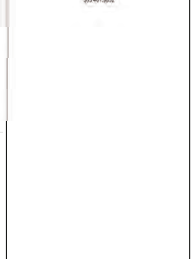


IMPACT RESISTANT ALUM/GLASS WINDOWS/DOORS UNDER
SEPARATE PERMIT. CONTRACTOR TO SUBMIT SHOP
DRAWINGS TO A/E AND BUILDING DEPARTMENT FOR REVIEW
AND APPROVAL PRIOR FABRICATION AND INSTALLATION

ISSUE DATE: 12.06.2018		
No.	DATE	DESCRIPTION
1	7.12.21	ADMINISTRATIVE REVIEW

AFTER

All ideas, designs, arrangements, plans and specifications indicated or represented by this drawing are owned by and are the property of Borges + Associates, P.A., and were created and developed for use on and in connection with the specified project. No copies, reproductions, representations or electronic transmission of any portion of these drawings in whole or in part are to be made without the express written permission of Borges + Associates, P.A.

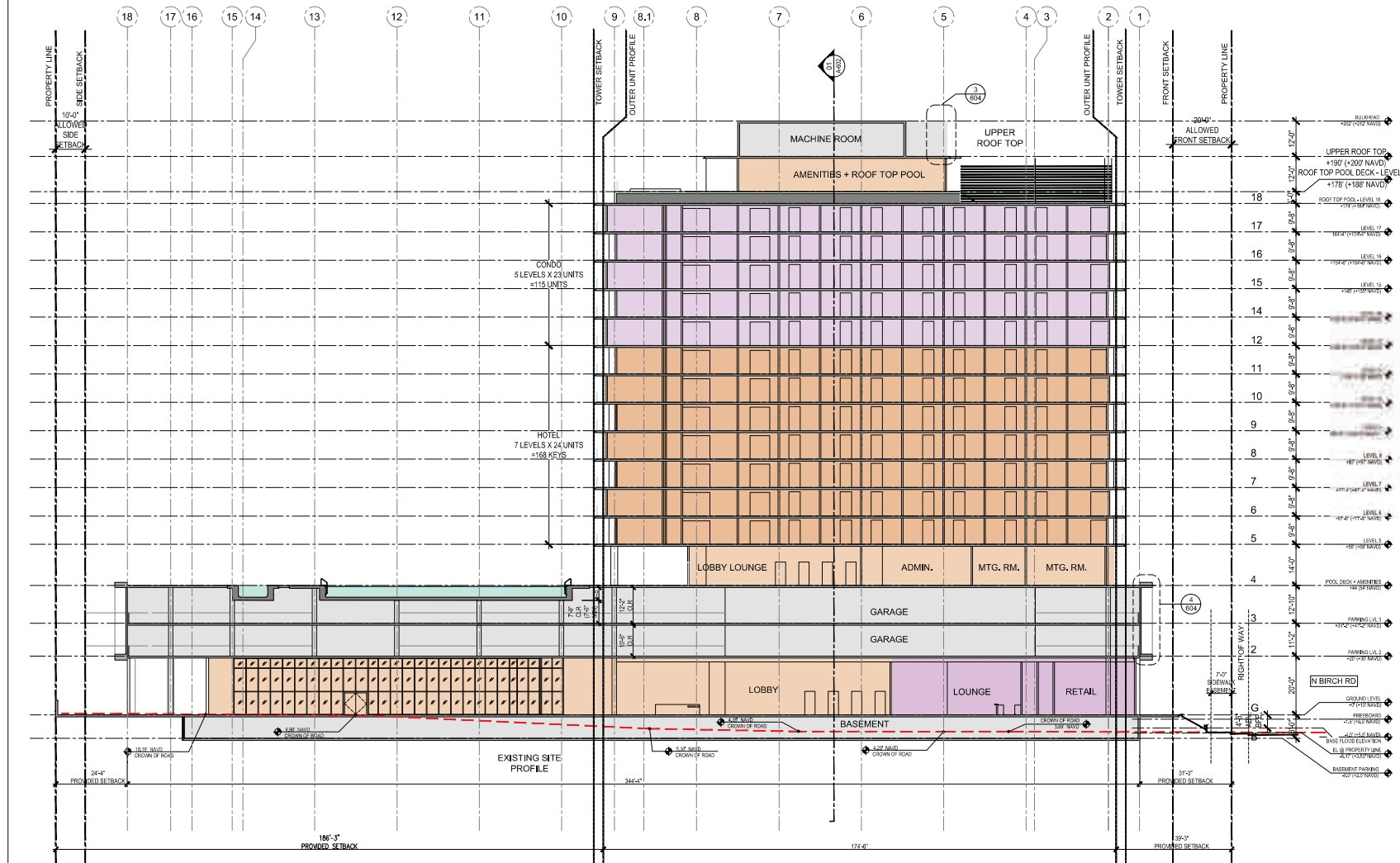


PROJECT NAME
**BAYSHORE DR
HOTEL**
3016 BAYSHORE DR.
FT. LAUDERDALE, FL 33304

PROJECT NUMBER
SECTION A

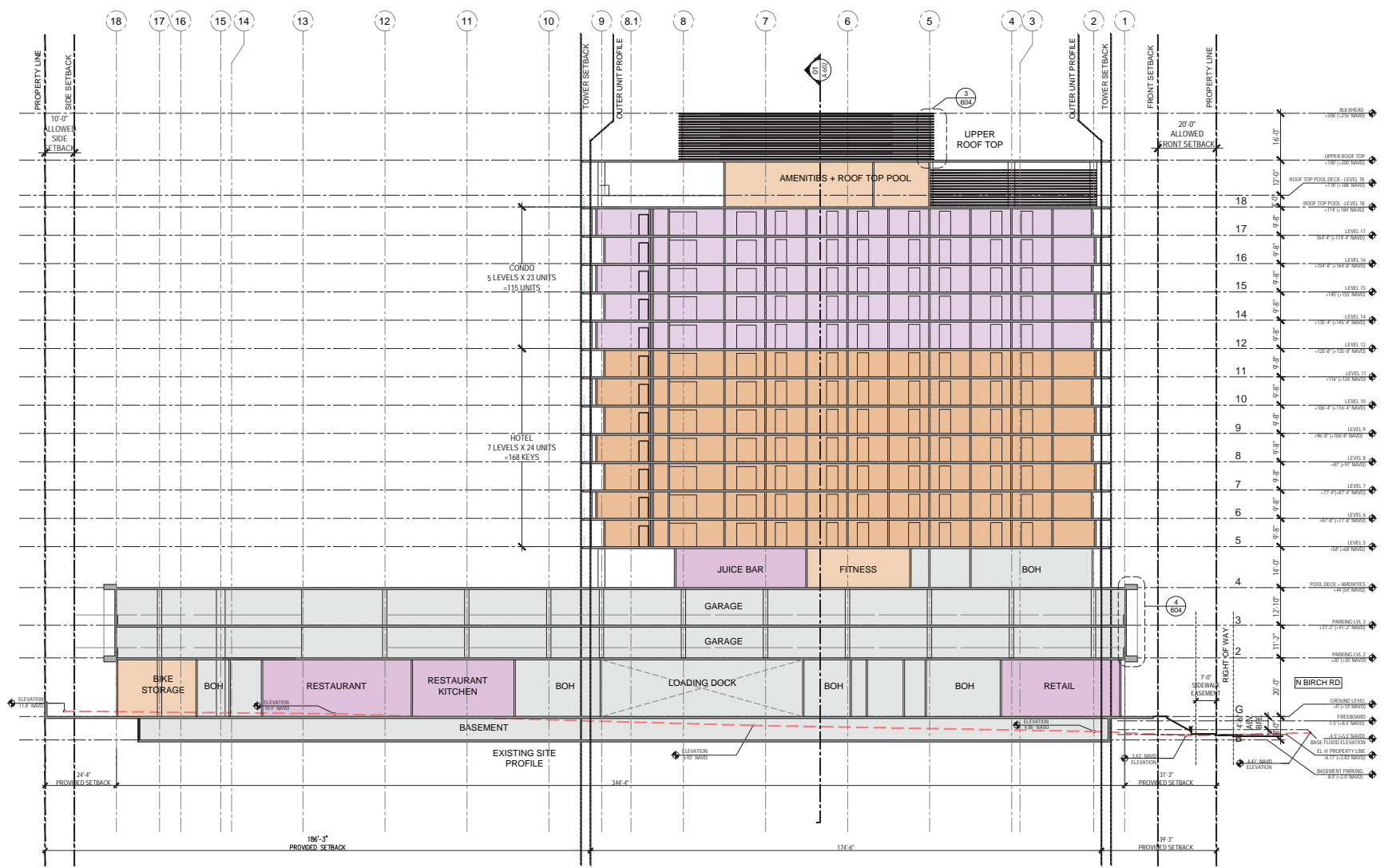
SCALE
AS SHOWN

DRAWING NUMBER
A-600



01 SECTION A 1/16" = 1'-0"

IMPACT RESISTANT ALUM./GLASS WINDOWS/DOORS UNDER SEPARATE PERMIT. CONTRACTOR TO SUBMIT SHOP DRAWINGS TO A/E AND BUILDING DEPARTMENT FOR REVIEW AND APPROVAL PRIOR FABRICATION AND INSTALLATION



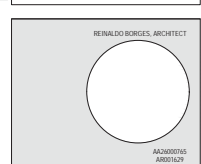
ISSUE DATE: 12.06.2018

No.	DATE	DESCRIPTION

BEFORE

All ideas, designs, arrangements, plans and specifications indicated or represented by this drawing are owned by, and are the property of Borges + Associates, P.A., and were created, owned and developed for use on and in connection with the specified project. No copies, transmissions, reproductions, or electronic manipulation of any portion of these drawings in whole or in part are to be made without the express written permission of Borges + Associates, P.A.

All copyrights reserved © 2018



PROJECT TEAM

CIVIL ENGINEER / LANDSCAPE ARCHITECT
ARCHITECT
ARCHITECT
 RENALDO BORGES, ARCHITECT
 2140 NW 80 AVE
 CORAL GABLES, FL 33134
 305.467.5405

LIFE SAFETY
 SLS CONSULTING INC.
 200 PALMWOOD AVE
 CORAL GABLES, FLORIDA 33134
 305.467.5405

PROJECT NAME

BAYSHORE DR HOTEL
 3016 BAYSHORE DR.
 FT. LAUDERDALE, FL 33304

DRAWING NUMBER

SECTION B

SCALE

AS SHOWN

DRAWING NUMBER

A-601

01 SECTION B

1/16" = 1'-0"

IMPACT RESISTANT ALUM/GLASS WINDOWS/DOORS UNDER
SEPARATE PERMIT. CONTRACTOR TO SUBMIT SHOP
DRAWINGS TO A/E AND BUILDING DEPARTMENT FOR REVIEW
AND APPROVAL PRIOR FABRICATION AND INSTALLATION

ISSUE DATE: 12.06.2018		
NO.	DATE	DESCRIPTION
1	7.12.21	ADMINISTRATIVE REVIEW
AFTER		

All ideas, designs, arrangements, plans and specifications indicated or represented by this drawing are owned by and are the property of Borges + Associates, P.A., and were created and developed for use on and in connection with the specified project. No copies, reproductions, representations or electronic manipulation of any portion of these drawings in whole or in part are to be made without the express written permission of Borges + Associates, P.A.

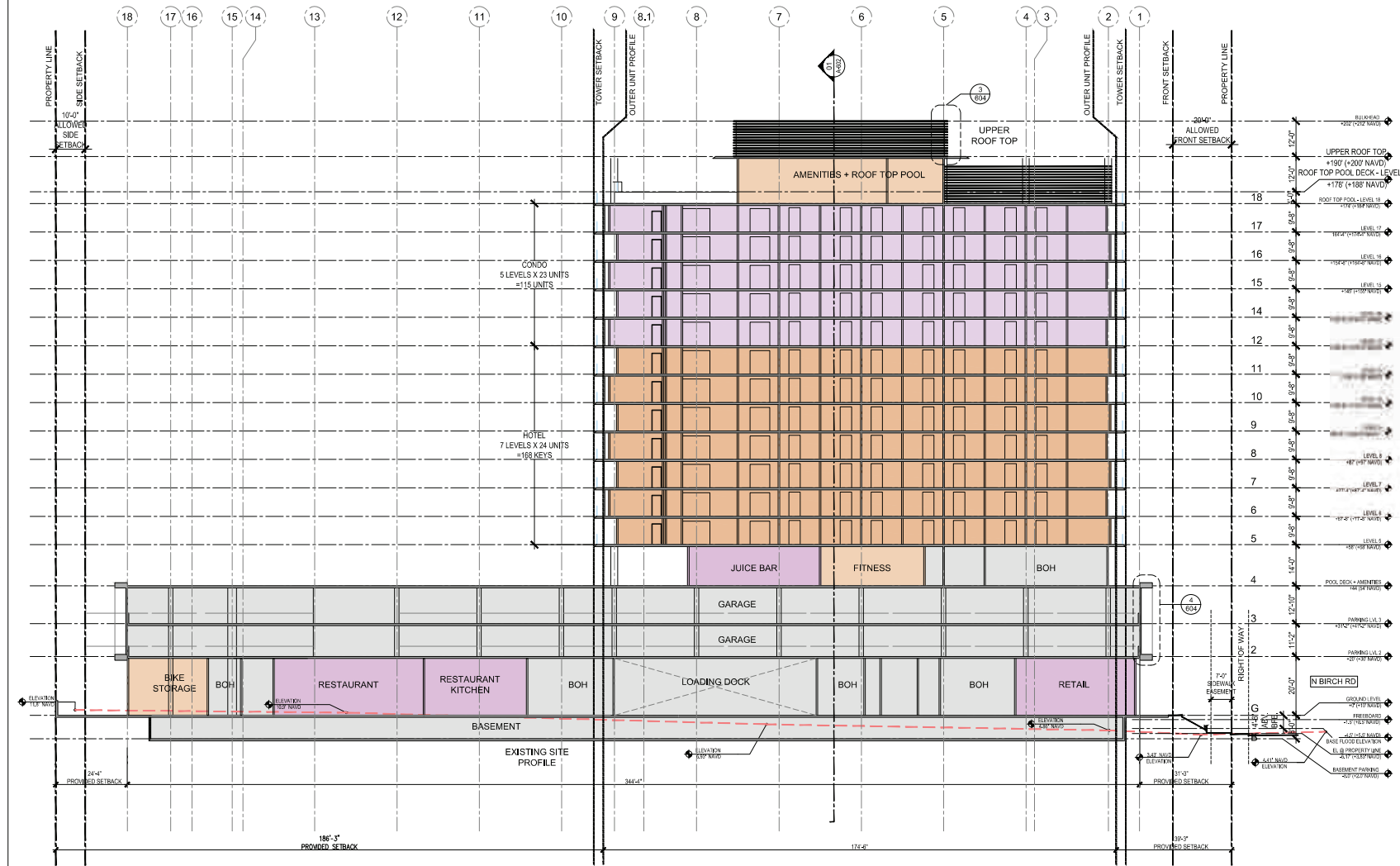


PROJECT NAME
**BAYSHORE DR
HOTEL**
3016 BAYSHORE DR.
FT. LAUDERDALE, FL 33304

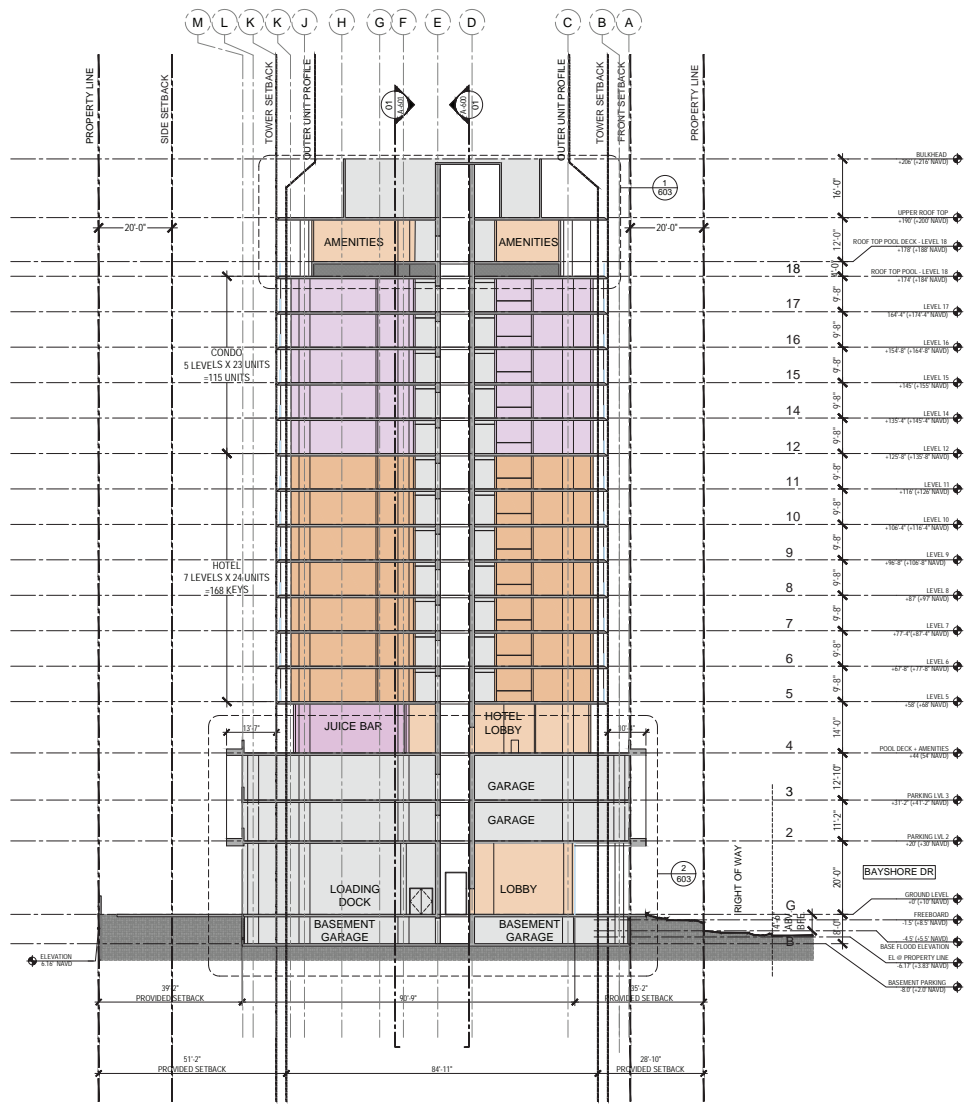
PROJECT NUMBER
SECTION B

SCALE
AS SHOWN

DRAWING NUMBER
A-601



IMPACT RESISTANT ALUM./GLASS WINDOWS/DOORS UNDER
SEPARATE PERMIT. CONTRACTOR TO SUBMIT SHOP
DRAWINGS TO A/E AND BUILDING DEPARTMENT FOR REVIEW
AND APPROVAL PRIOR FABRICATION AND INSTALLATION

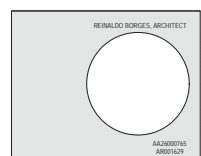


ISSUE DATE: 12.06.2018		
No.	DATE	DESCRIPTION

BEFORE

All ideas, designs, arrangements, plans and specifications indicated or represented by this drawing are owned by and are the property of Borges + Associates, P.A., and were created, conceived and developed for use in and in connection with the specified project. No copies, transmissions, reproductions, or electronic manipulation of any portion of these drawings in whole or in part are to be made without the express written permission of Borges + Associates, P.A.

All copyrights reserved © 2018
borges + associates
ARCHITECTS • PLANNERS • ENGINEERS
500 Brickell Ave., Suite 700, Miami, Florida 33131
305.467.4478 • 305.467.4479 fax



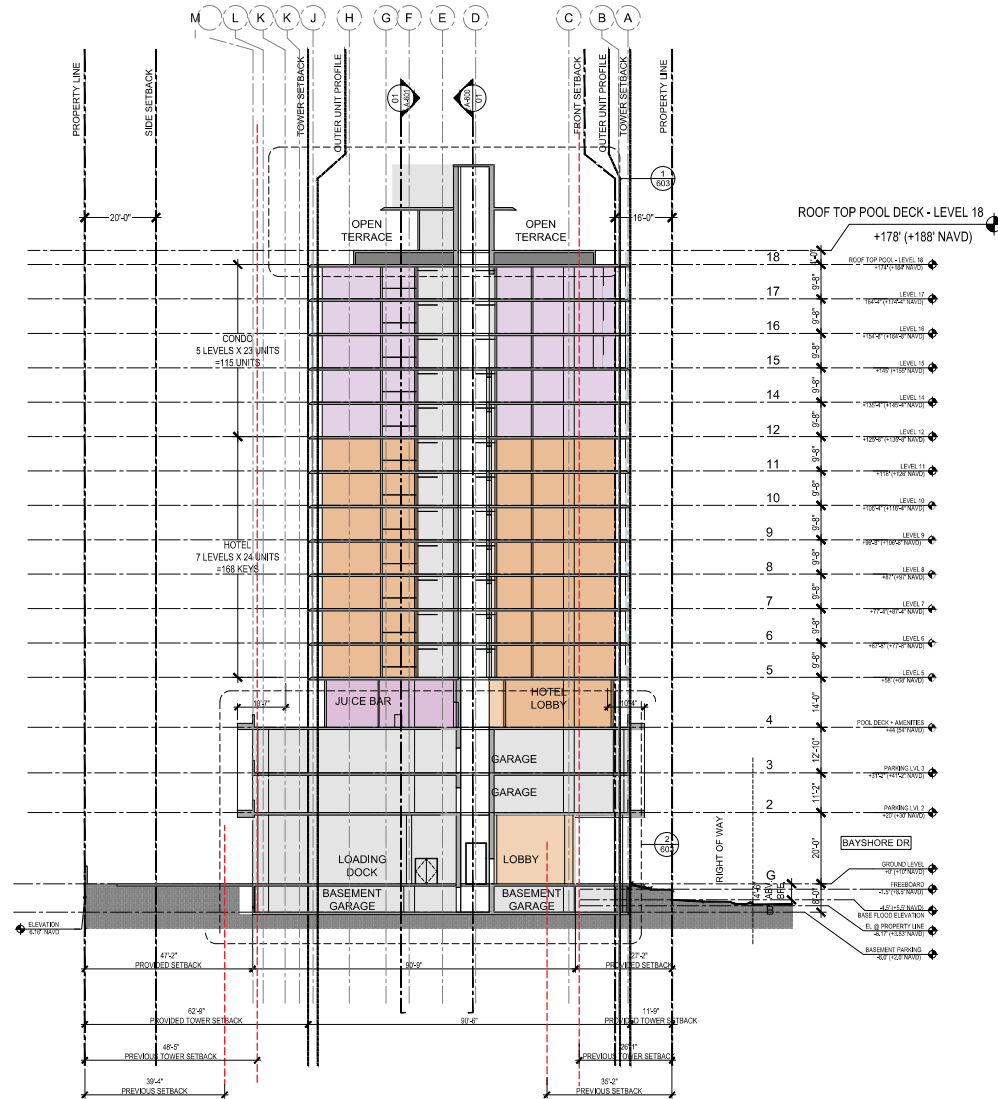
PROJECT TEAM
CIVIL ENGINEER / LANDSCAPE ARCHITECT
ARTHUR & ASSOCIATES INC.
2140 NW 40 AVE
CORAL GABLES, FL 33134
305.467.5475
LIFE SAFETY
SLS CONSULTING INC.
200 PALMER BLVD
CORAL GABLES, FLORIDA 33134
305.467.5475

PROJECT NAME
**BAYSHORE DR
HOTEL**
3016 BAYSHORE DR.
FT. LAUDERDALE, FL 33304

PROJECT NUMBER
DRAWING NAME
SECTION C

SCALE
AS SHOWN
DRAWING NUMBER
A-602

IMPACT RESISTANT ALUM/GLASS WINDOWS/DOORS UNDER
SEPARATE PERMIT. CONTRACTOR TO SUBMIT SHOP
DRAWINGS TO A/E AND BUILDING DEPARTMENT FOR REVIEW
AND APPROVAL PRIOR FABRICATION AND INSTALLATION



ISSUE DATE: 12.06.2018		
No.	DATE	DESCRIPTION
1	7.12.21	ADMINISTRATIVE REVIEW
AFTER		

All ideas, designs, arrangements, plans and specifications indicated or represented by this drawing are owned by and are the property of Borges + Associates, P.A., and were created, evolved and developed for use on and in connection with the specified project. No copies, transmissions, reproductions or electronic manipulation of any portion of these drawings in whole or in part can be made without the express written consent of Borges + Associates, P.A.



PROJECT NAME
**BAYSHORE DR
HOTEL**
3016 BAYSHORE DR.
FT. LAUDERDALE, FL 33304

PROJECT NUMBER
DRAWING NAME
SECTION C

SCALE
AS SHOWN
DRAWING NUMBER
A-602

01 CROSS SECTION

1/16" = 1'-0"

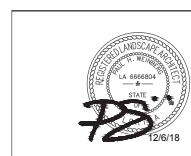


ISSUE DATE: 07.13.2018		
No.	DATE	DESCRIPTION

BEFORE

All ideas, designs, arrangements, plans and specifications indicated or represented by this drawing are owned by, and are the property of Borges + Associates, P.A., and were created, revised and developed for use on and in connection with the specified project. No copies, transmissions, reproductions, or electronic manipulation of any portion of these drawings in whole or in part are to be made without the express written permission of Borges + Associates, P.A.

All copyrights reserved © 2018



PROJECT TEAM:	
	CIVIL ENGINEER / LANDSCAPE ARCHITECT KETH & ASSOCIATES INC. 281 EAST ATLANTIC BLVD. PORTLAND BEACH, FL 32165-0001 STATE OF FLORIDA CERTIFICATE OF AUTHORIZATION NUMBER 7205
	LIFE SAFETY SLS CONSULTING INC. 3800 PALMVIEW AVE. CORAL GABLES, FLORIDA 33134 305.461.8852

PROJECT NAME
BAYSHORE DR HOTEL
3016 BAYSHORE DR. FT. LAUDERDALE, FL 33304

PROJECT NUMBER:
ILLUSTRATIVE SITE PLAN

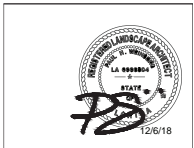
SCALE:	DRAWING NUMBER:
	LC-100

ISSUE DATE: 07.13.2018		
No.	DATE	DESCRIPTION
1	7.12.21	ADMINISTRATIVE REVIEW

AFTER

All ideas, designs, arrangements, plans and specifications indicated or represented by this drawing are owned by, and are the property of Borges + Associates, P.A., and were created, written and developed for use on and in connection with the specified project. No copies, transmissions, reproductions, or electronic manipulations of any portion of these drawings in whole or in part are to be made without the express written permission of Borges + Associates, P.A.

All copyrights reserved © 2018



PROJECT TEAM:	
	CIVIL ENGINEER / LANDSCAPE ARCHITECT
	KEITH B. WILLIAMS INC.
	LIFE SAFETY
	SLS CONSULTING INC.

PROJECT NAME:
BAYSHORE DR HOTEL
3016 BAYSHORE DR. FT. LAUDERDALE, FL 33304

PROJECT NUMBER:
DRAWING NAME:
ILLUSTRATIVE SITE PLAN
SCALE:
DRAWING NUMBER:
LC-100

