

Henry E. Kinney Tunnel Improvements and Pedestrian Plaza Project



Fin. # 439714-1-52-01/02

Meet the Construction Project Team



Heidi Cuevas, P.E.
Construction Project
Manager
FDOT District Four
Broward Operations



Andre H. Thomas
Mechanical Project Administrator
BCC Engineering



Martin Ryan, P.E.
Senior Project Engineer
BCC Engineering



Frank Serrano
Contractor Project Manager
Lead Engineering Contractors



Eric Pineres, P.E.
Project Administrator
BCC Engineering



Daniela Silva
Community Outreach Specialist
The Corradino Group

Project Overview

Purpose: To rehabilitate the tunnel and build a pedestrian plaza.

Length: 3.14 miles

Contractor: Lead Engineering Contractors

Construction Start: September 7, 2021

Estimated Contract Cost: \$28.4 M

Contract Time: 701 calendar days
(not including weather and holidays)

*FDOT has included project incentives
to complete the project on time

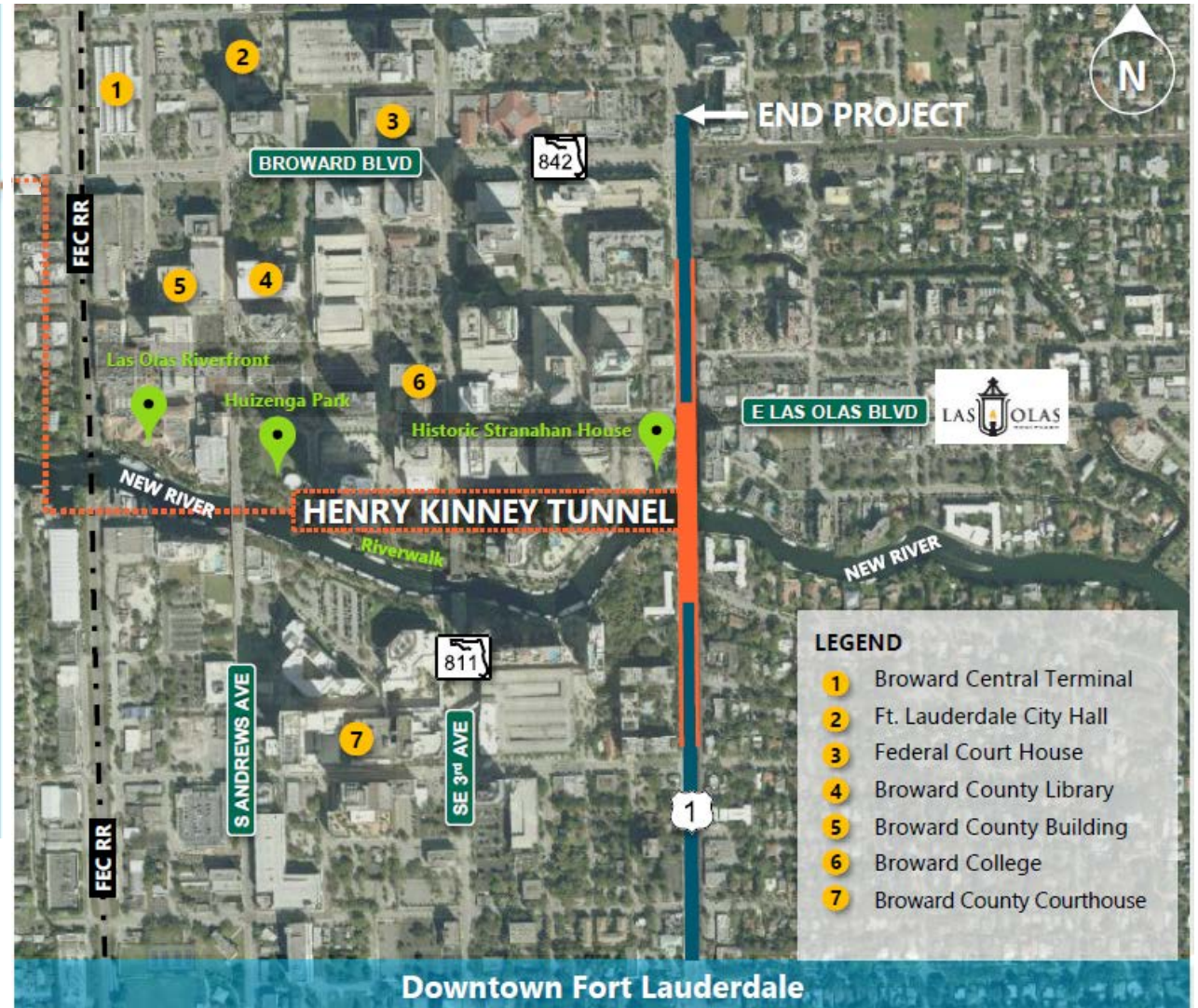
Estimated Completion: Late 2023



Project Limits



SR 5/US 1
From SR 862/I-595 to North of SR
842/Broward Boulevard



Scope of Work



- Rehabilitating the structural, mechanical, electrical, architectural, and life safety components of the Henry E. Kinney Tunnel
- Installing Intelligent Transportation Systems (ITS) along US 1 from I-595 to Broward Boulevard
- Milling and resurfacing US 1 from Rio Vista Boulevard to south of the Tunnel
- Extending the tunnel top to the north of Las Olas Boulevard to accommodate a pedestrian plaza which will include new fountains, seating facilities, re-designed brick pavers, artificial turf and landscape installation
- Reconstructing the intersection of Las Olas Boulevard at SE 6th Avenue

Traffic Impacts

- Work will occur in phases to minimize impacts to the public
 - Traffic will be shifted to one side of the Tunnel so one lane in each direction can be maintained
 - Lane closures and full closures of the Henry E. Kinney Tunnel and Las Olas Boulevard are permitted, and detours of US 1 traffic will be implemented as needed
 - *Full closures of Las Olas Boulevard and the tunnel will not be concurrent.
 - Pedestrian routes will be temporarily detoured as necessary or maintained throughout the work zone and business access will be maintained at all times.
- *Advanced notice and detour information will be provided well in advance of any closures.



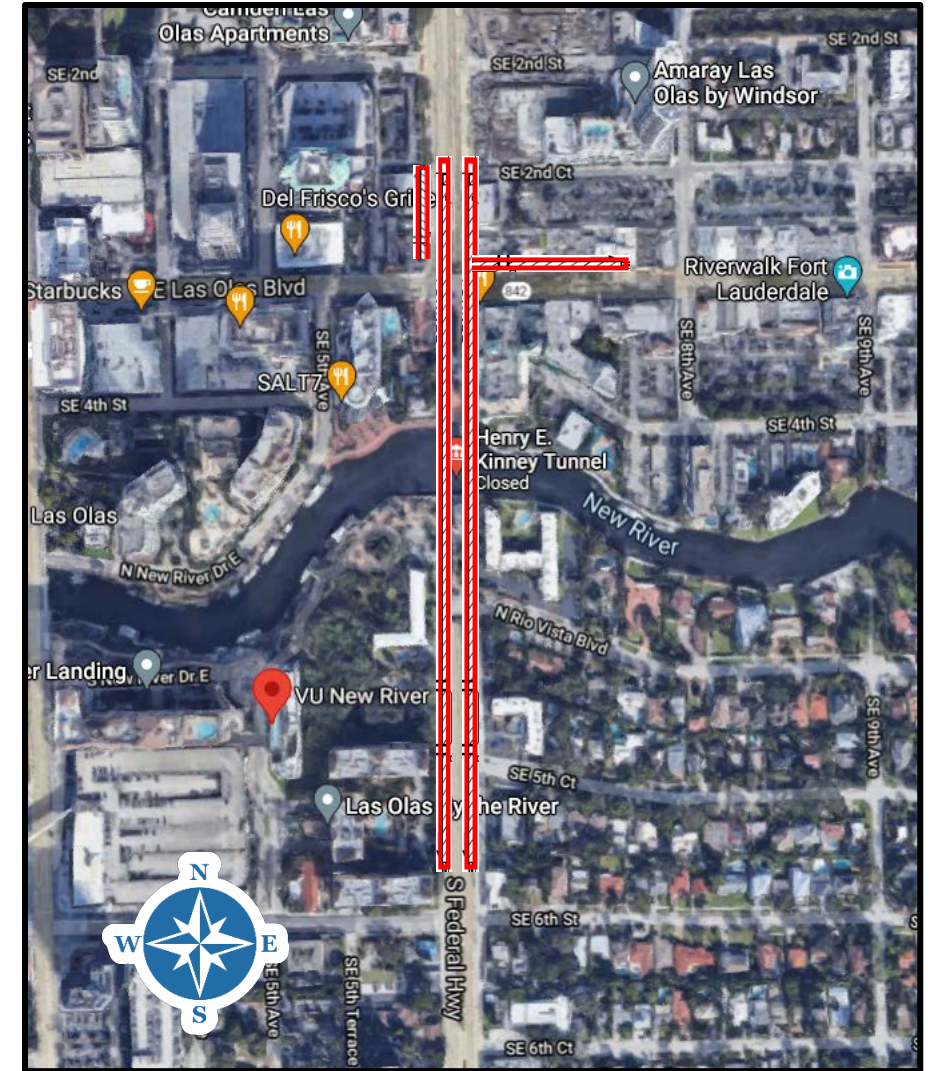
Anticipated Activities: 3-6 Months



- Construction of the tunnel extension
- Limited work will take place on the south of Las Olas Blvd.
- Rehabilitation within the tunnel chambers will take place

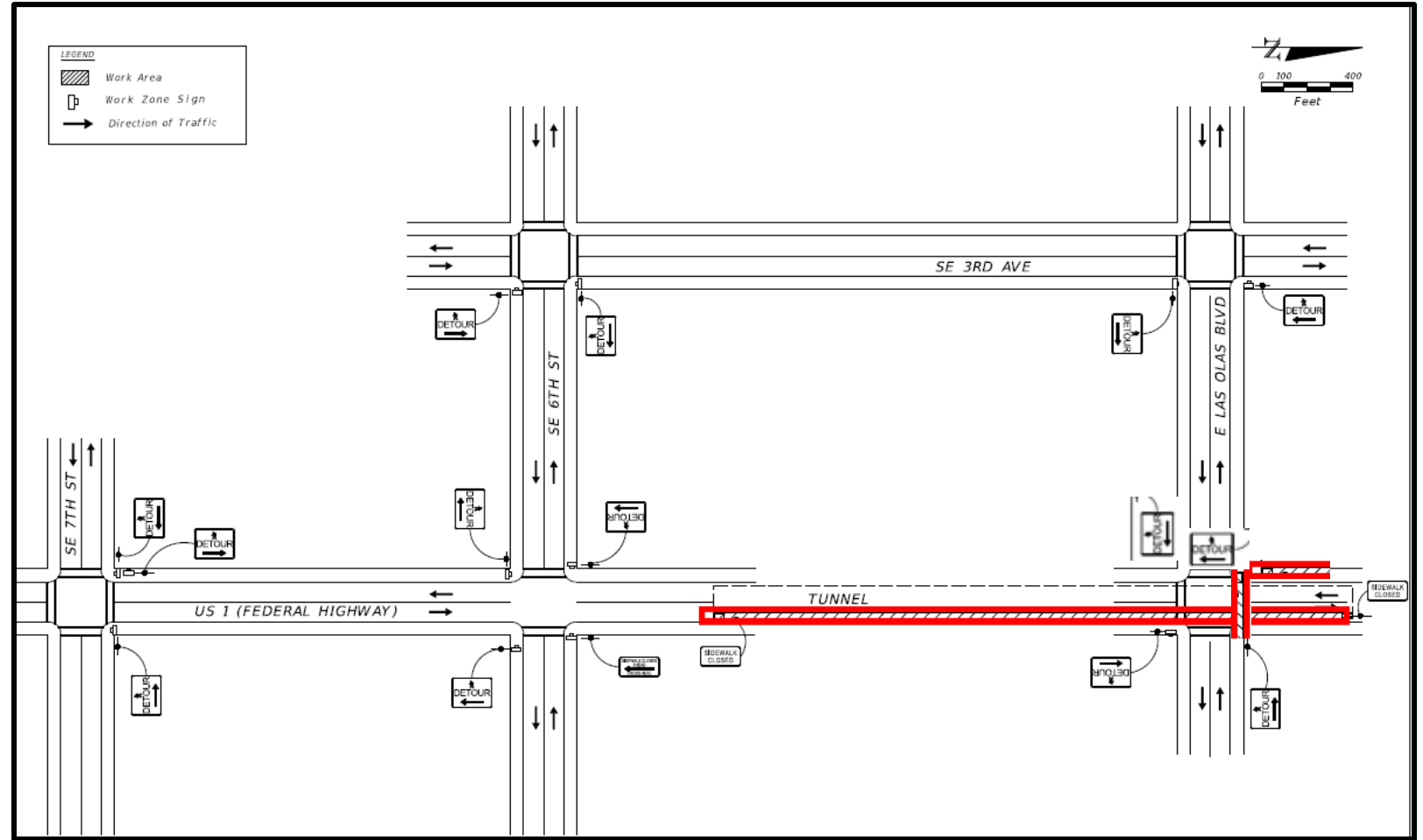
Traffic Impacts Beginning Sept. 7

- US-1 in each direction, from SE 5th Court to SE 2nd Street, will have the outside lanes closed for wall demolition activities and construction of end bents for the proposed tunnel extension.
- SE 6th Avenue in each direction, from Las Olas Blvd to SE 2nd Street, will be closed to traffic for wall demolition activities and construction of end bents for the proposed tunnel extension
- Westbound Las Olas Boulevard, from just west of 8th Avenue to just west of southbound 6th Avenue, will have the outside lane closed to traffic for demolition operations of the north tunnel exit.



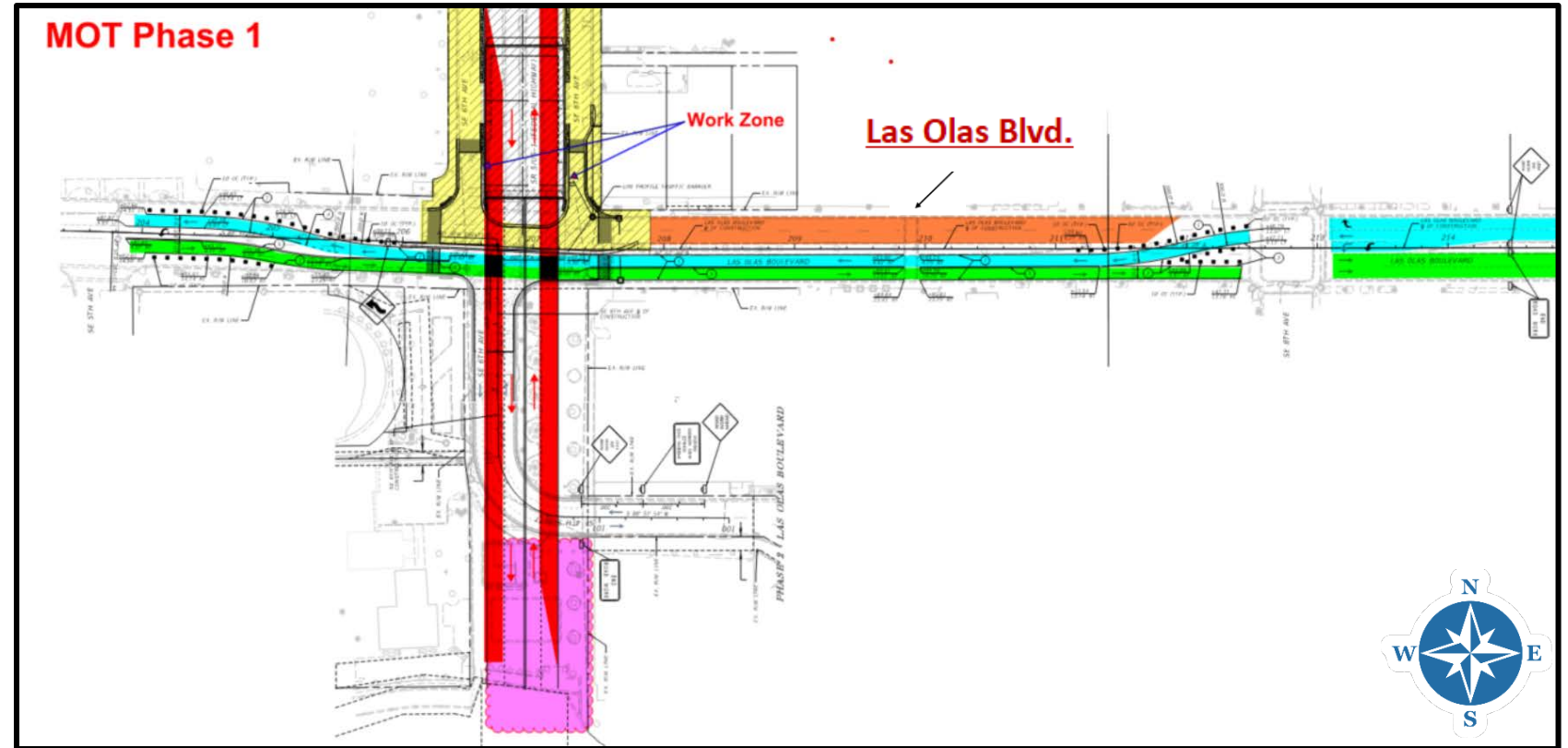
Pedestrian Impacts Beginning Sept. 7

- The pedestrian sidewalk along northbound US-1, from SE 6th Street to Las Olas Boulevard, will be closed for end bent and tunnel top operations.
- The pedestrian sidewalk on southbound SE 6th Avenue, from Las Olas Boulevard to SE 2nd Street, will be closed for end bent and tunnel top operations.
- The pedestrian crosswalk on Las Olas Boulevard in front of the Henry E. Kinney Tunnel, from southbound SE 6th Avenue to northbound SE 6th Avenue, will be closed for demolition operations.



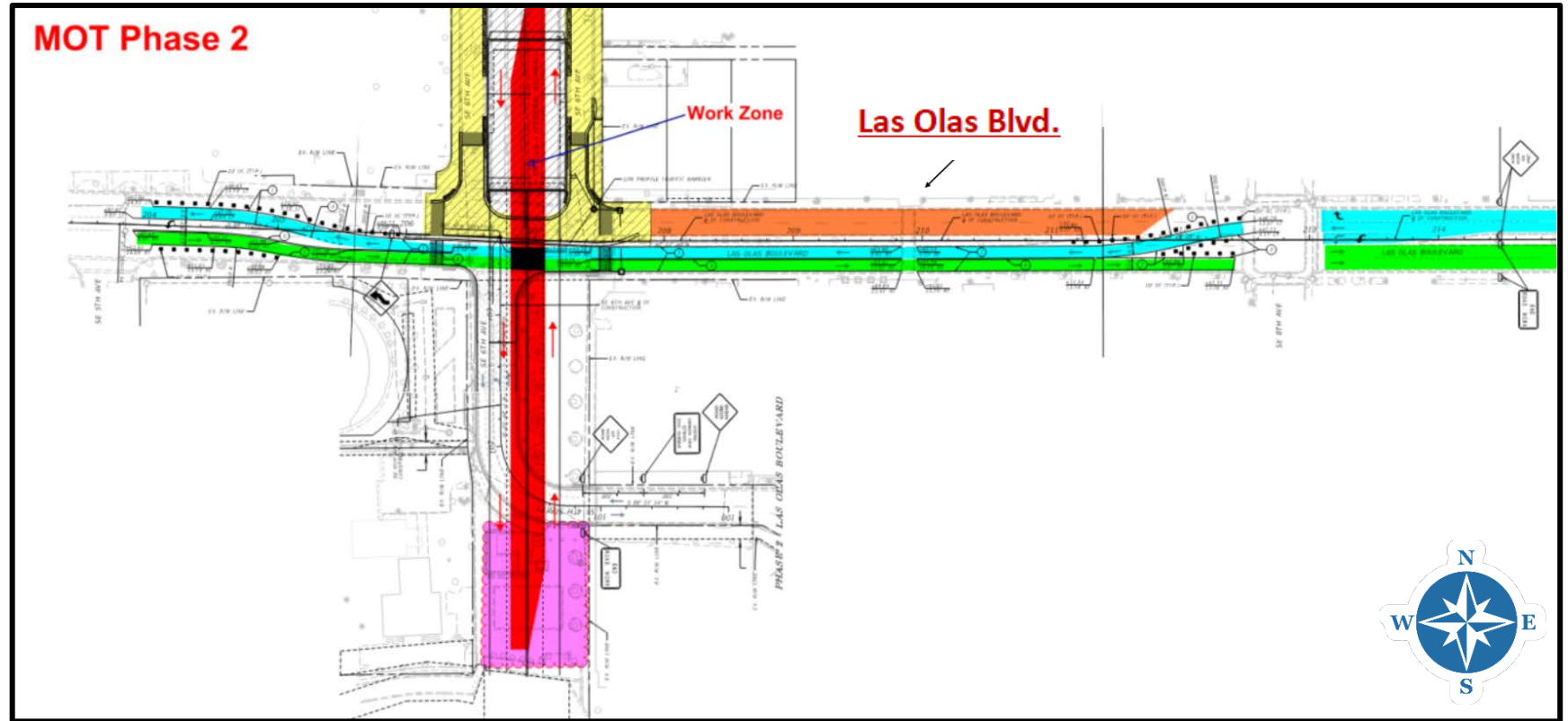
MOT Phase 1

- The outside lanes of the tunnel will be closed to traffic



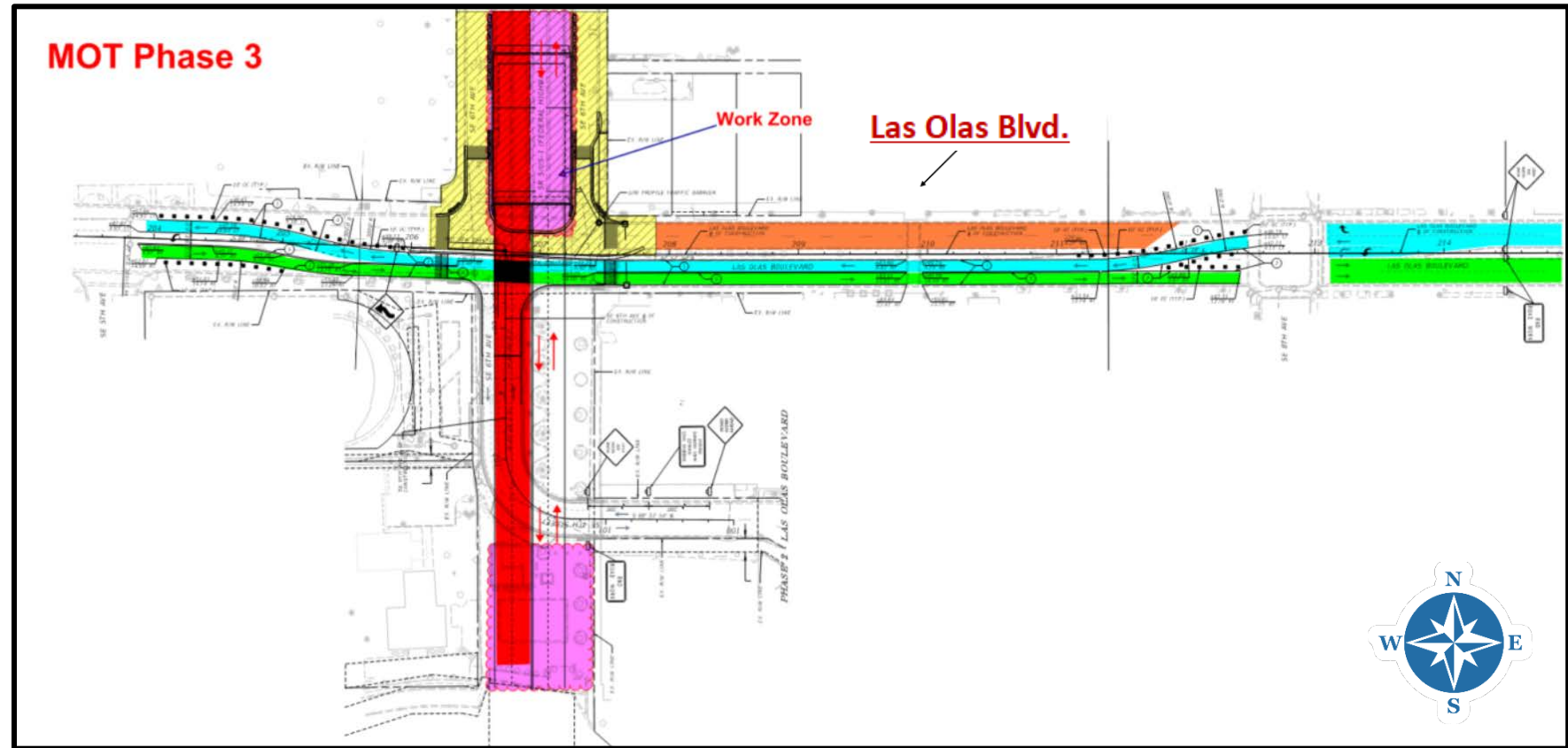
MOT Phase 2

- The inside lanes of the tunnel will be closed to traffic



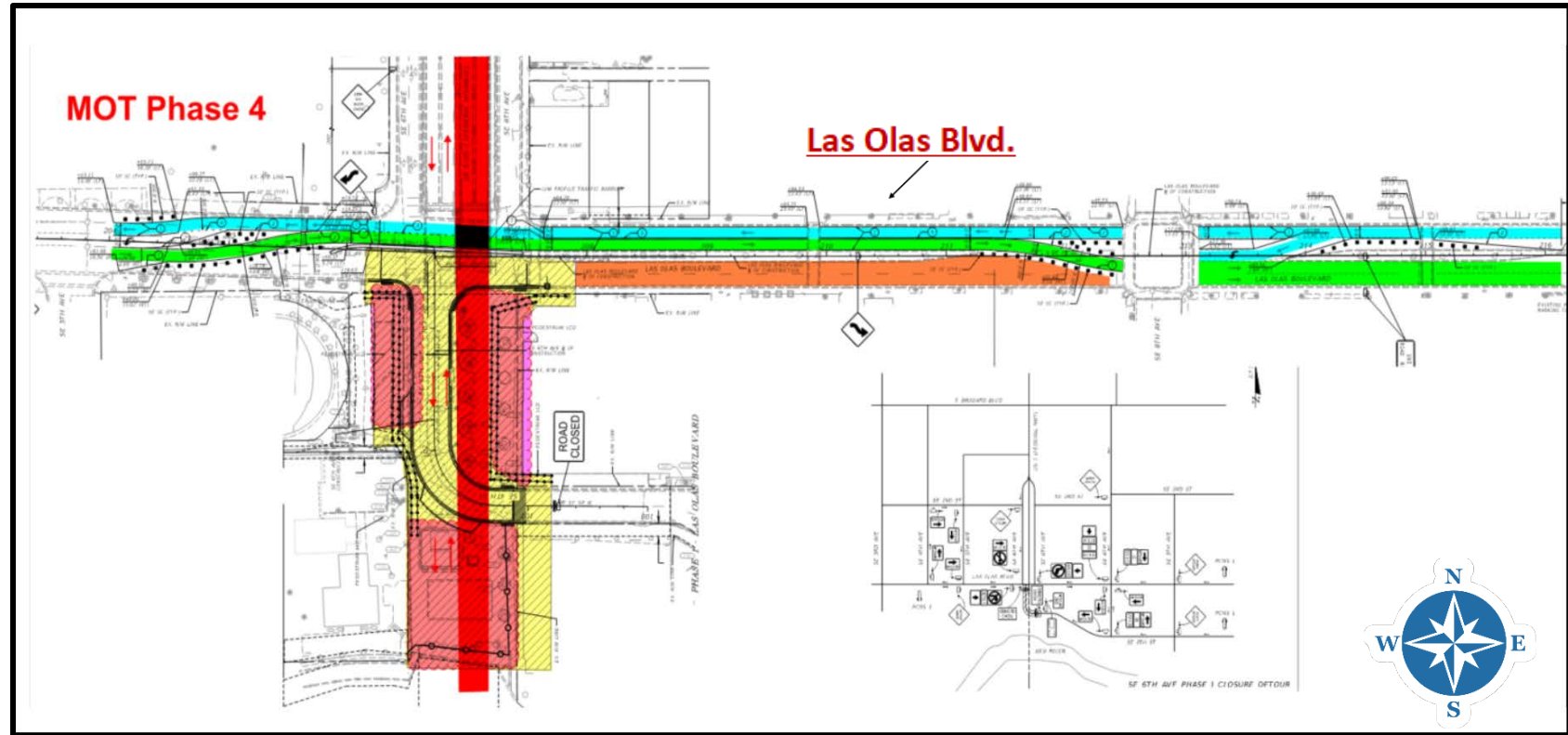
MOT Phase 3

- The southbound tunnel chamber will be closed, and motorists will be shifted to the north tunnel
- One lane in each direction will be maintained on the north tunnel
- Temporary full closures of the tunnel are anticipated for beam setting operations

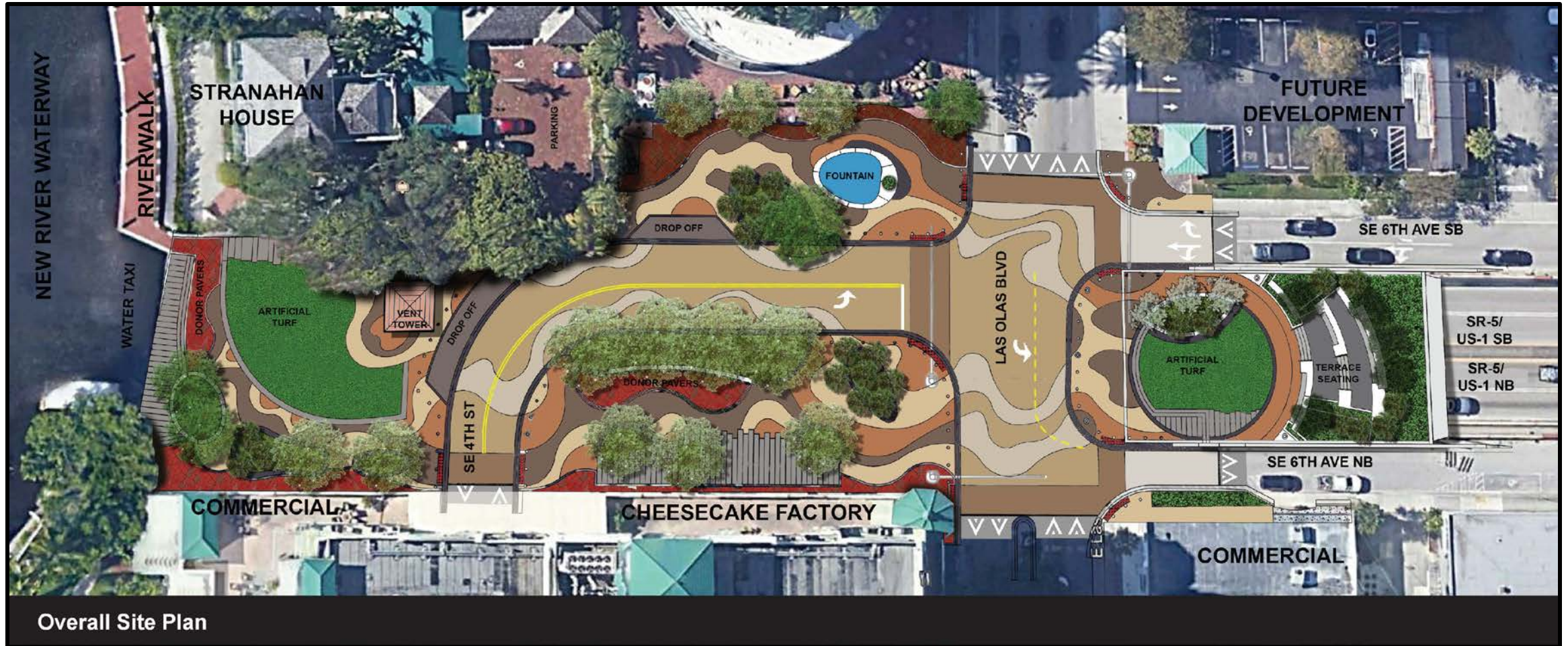


MOT Phase 4

- The northbound tunnel chamber will be closed, and motorists will be shifted to the south tunnel where one lane in each direction will be maintained
- Eastbound Las Olas Blvd. will be shifted to the westbound where one lane in each direction will be maintained



Final View



Laura Ward Plaza View



Laura Ward Plaza North View



Laura Ward Plaza Southwest View

Additional View



Riverside Hotel | Cheesecake North View



Cheesecake | ICON Southwest View

Tunnel Top View



Tunnel Top Plaza Northwest View



Tunnel Top Plaza North View

Safety & Local Coordination

- **Work Zone Signage**

- Advanced warning and project signage is placed throughout the construction corridor to alert and inform the traveling public.
- To ensure motorist, pedestrian, cyclist, and crew safety, posted speed limits will be strictly enforced throughout construction.



- **Local Agency Coordination**


- The project team will work closely with The City of Fort Lauderdale and other local agencies to ensure safety standards are met and impacts to the public are minimized in every way possible

- **Business and Pedestrian access will be maintained**

Community Outreach

For project updates

- Project Website: www.d4fdot.com
<https://bit.ly/3yzOfFH>
- Weekly Lane Closure Press Release
- Community Outreach Specialist, Daniela Silva
 - msilva@corradino.com
 - (786) 441-3088

 Florida Department of Transportation		
RON DESANTIS GOVERNOR	3400 West Commercial Boulevard Fort Lauderdale, Florida 33309	KEVIN J. THIBAUT, P.E. SECRETARY
For Immediate Release July 16, 2021	Contact: Guillermo Canedo (954) 777-4090 guillermo.canedo@dot.state.fl.us	
FDOT Broward County Traffic Impact Report July 16, 2021 through July 23, 2021		
<p>FORT LAUDERDALE, Fla. – Construction and maintenance-related lane closures on state highways in Broward County are expected during the week of July 16 through July 23. Weather permitting, work will be done at the following locations throughout the county. For updated lane closure information, please refer to www.d4fdot.com. Follow us on Twitter @MyFDOT_SEFL, Facebook @MyFDOTSEFL, and Instagram @myfdot_sefl.</p> <p>Please note, any full road, ramp or bridge closures have been highlighted below.</p>		
CONSTRUCTION PROJECTS		
Interstates		
<p>1. <u>I-95 from south of Hollywood Boulevard in the City of Hollywood to south of Broward Boulevard in the City of Fort Lauderdale and I-595 from I-95 to SR-7 in the Town of Davie (95 Express Phase 3C)</u></p> <p>Description: Work on this 9-mile 95 Express project includes extending the existing Express Lanes north from just south of Hollywood Boulevard to just south of Broward Boulevard in Broward County. One lane will be added, and the High Occupancy Vehicle (HOV) lane will be converted to create two Express Lanes in each direction. The number of General Use lanes will remain the same. Other project improvements include construction of I-95/I-595 Direct Connectors between 95 Express Lanes and I-595, as well as reconstruction, milling, resurfacing and widening of I-595 from SR-7 to I-95 and along I-95 from south of Hollywood Boulevard to south of Broward Boulevard. Additional work includes bridge widening along I-95 at several locations, painting of 17 bridges within project limits, I-95/SR 84 interchange modifications, Integrated Intelligent Transportation System (ITS) Installation, including cameras, detectors and dynamic message signs to optimize traffic operations, tolling/gantry construction, ramp signalization implementation at the interchanges, lighting, signage and drainage installation and construction of shoulder-mounted sound walls and retaining walls. For more information, please contact I-95 Community Outreach Specialist Daniela Silva at (786) 441-3088 or msilva@corradino.com.</p> <p>Cost/Completion: \$457 million / spring 2025</p>		