



PROVIDENT PARK IMPROVEMENTS

PROPOSAL BY FORT LAUDERDALE COMMUNITY REDEVELOPMENT AGENCY

PROVIDENT PARK

- 1412 NW 6th Street
- 1.4 Acres
- Currently Open Area & Picnic Area
- Events / Community Programming
Rockin at Provident Park



CRA DOLLARS AT WORK

- Interactive water splash pad
- Walking trail
- Bandstand / amphitheater
- Monuments to honor the neighborhoods history
- Additional trees and landscape



PROPOSED SITE PLAN

Design by ACAI Associates Inc.



Monument Pedestal



Entrance Features



Entrance Features



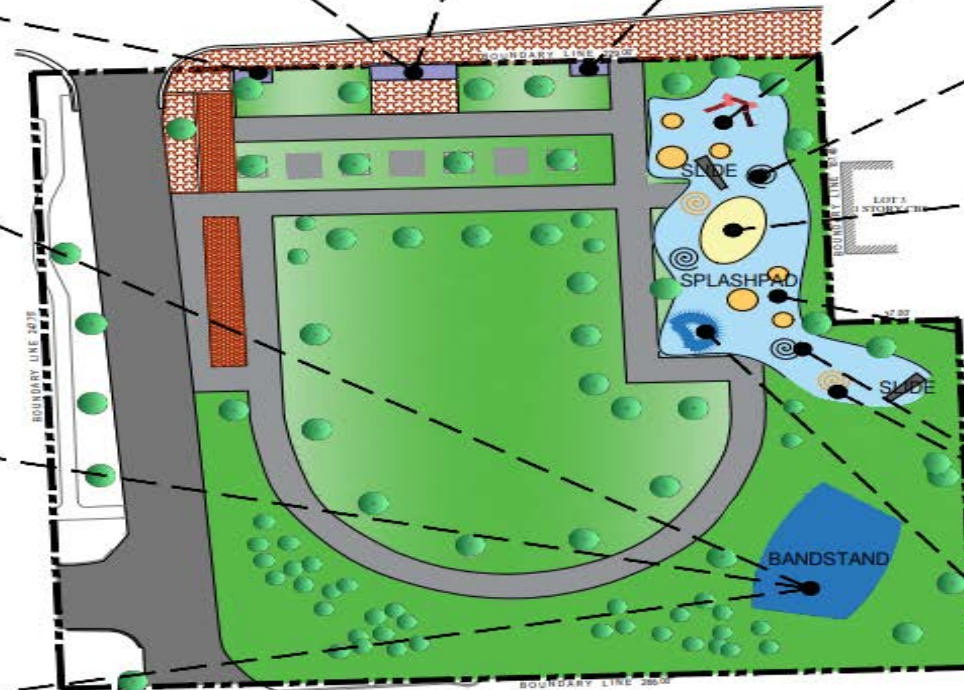
Monument Pedestal



Splash Pad Features

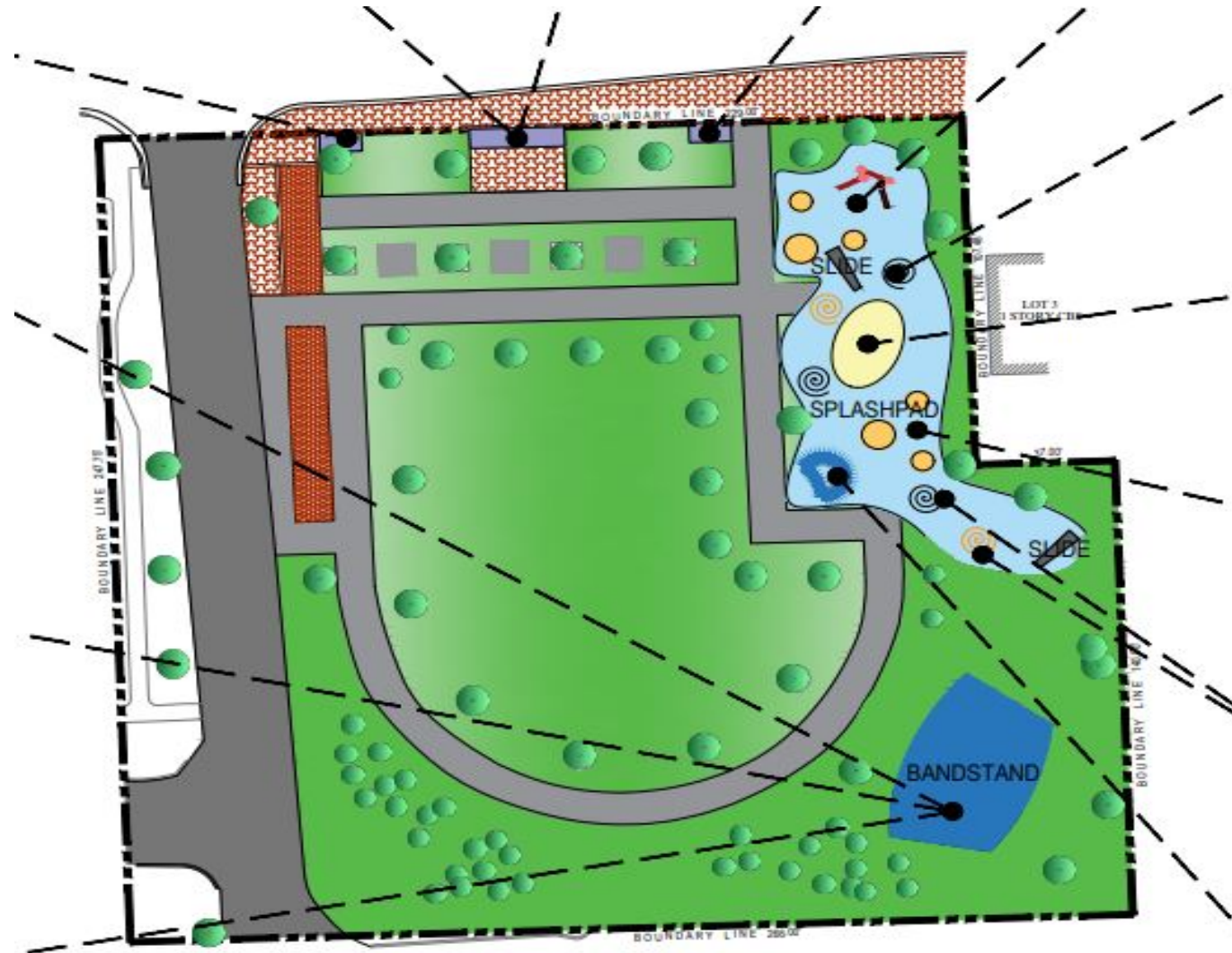


Bandstand Features



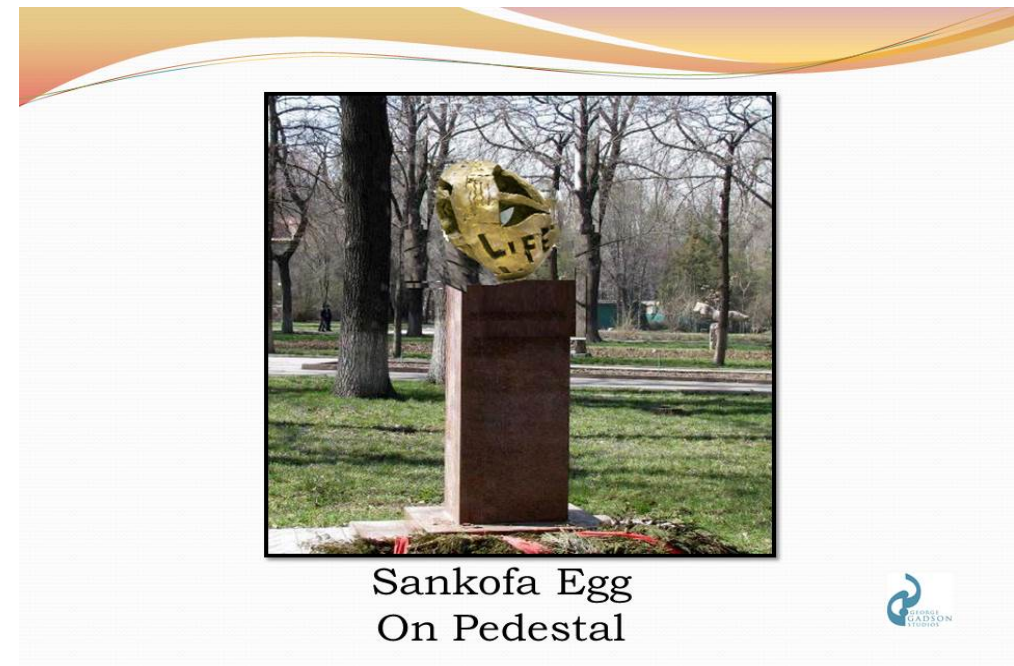
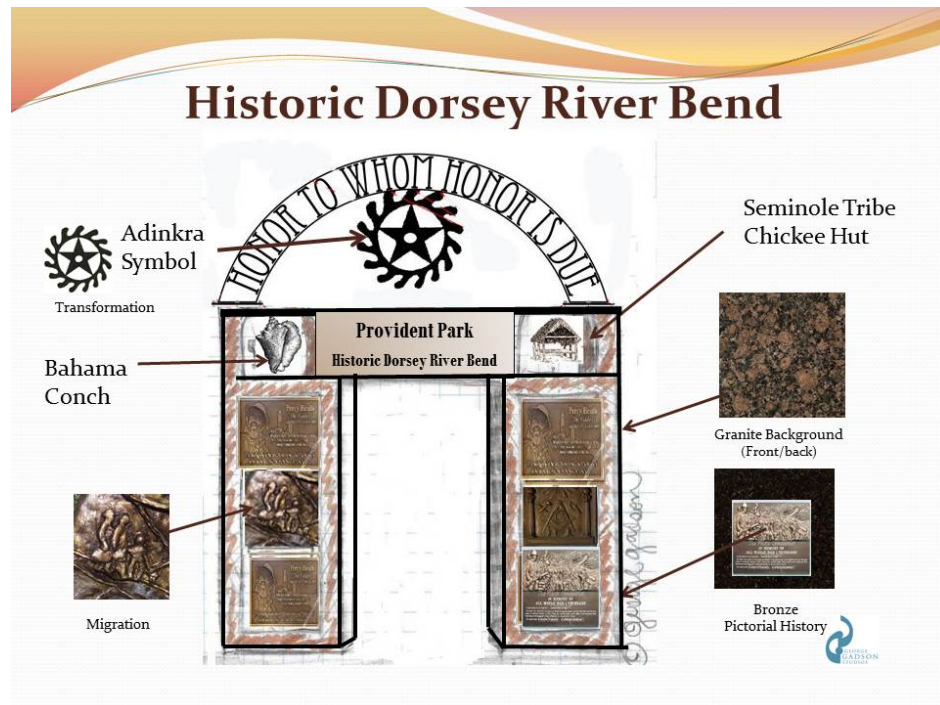
SITE PLAN
SCALE: 1"=20'-0"





PROPOSED HISTORIC RIVERBEND MONUMENT

- Concept Design by George Gadson Studios



NEXT STEPS



City of Fort Lauderdale
Community Redevelopment Agency
Northwest –Progresso-Flagler Heights Area
914 Sistrunk Blvd | Fort Lauderdale FL 33311
www.fortlauderdalecra.com