

PROPERTY IMAGES – RENDERINGS OF COMPLETION

THE FABRICK



801, 807, 815 & 819 NE 2nd Avenue

THE FABRICK



801, 807, 815 & 819 NE 2nd Avenue

PROPERTY IMAGES – BEFORE ACQUISITION



801, 807, 815 & 819 NE 2nd Avenue

PROPERTY IMAGES – CURRENT STATE



801, 807, 815 & 819 NE 2nd Avenue



7440 SW 50 TER, STE 102
Miami, FL 33155
786 615 2343
A432002556
1826001472



Carlos J. Bravo, R.A. AR17584
ONE SIGNED AND STAMPED PROFESSIONAL SEALING
OR DUPLICATED WITHOUT SPECIFIC WRITTEN PERMISSION OF
PROFESSIONAL.



IN THE EVENT OF A DISPUTE, THE USER OF
THIS DOCUMENT AGREES TO THE JURY OF
PEOPLE OF THE STATE OF FLORIDA AS THE FINAL
APPLICABLE LAW.

FLAGLER VILLAGE WAREHOUSES

801-819 NE 2ND AVE. FORT
LAUDERDALE, FL

BH3 DEVELOPMENT

PERMIT SET

REVISIONS		
No.	Description	Date
1	City Comments	03/04/2019
2	OWNER'S CHANGES	02/14/2020

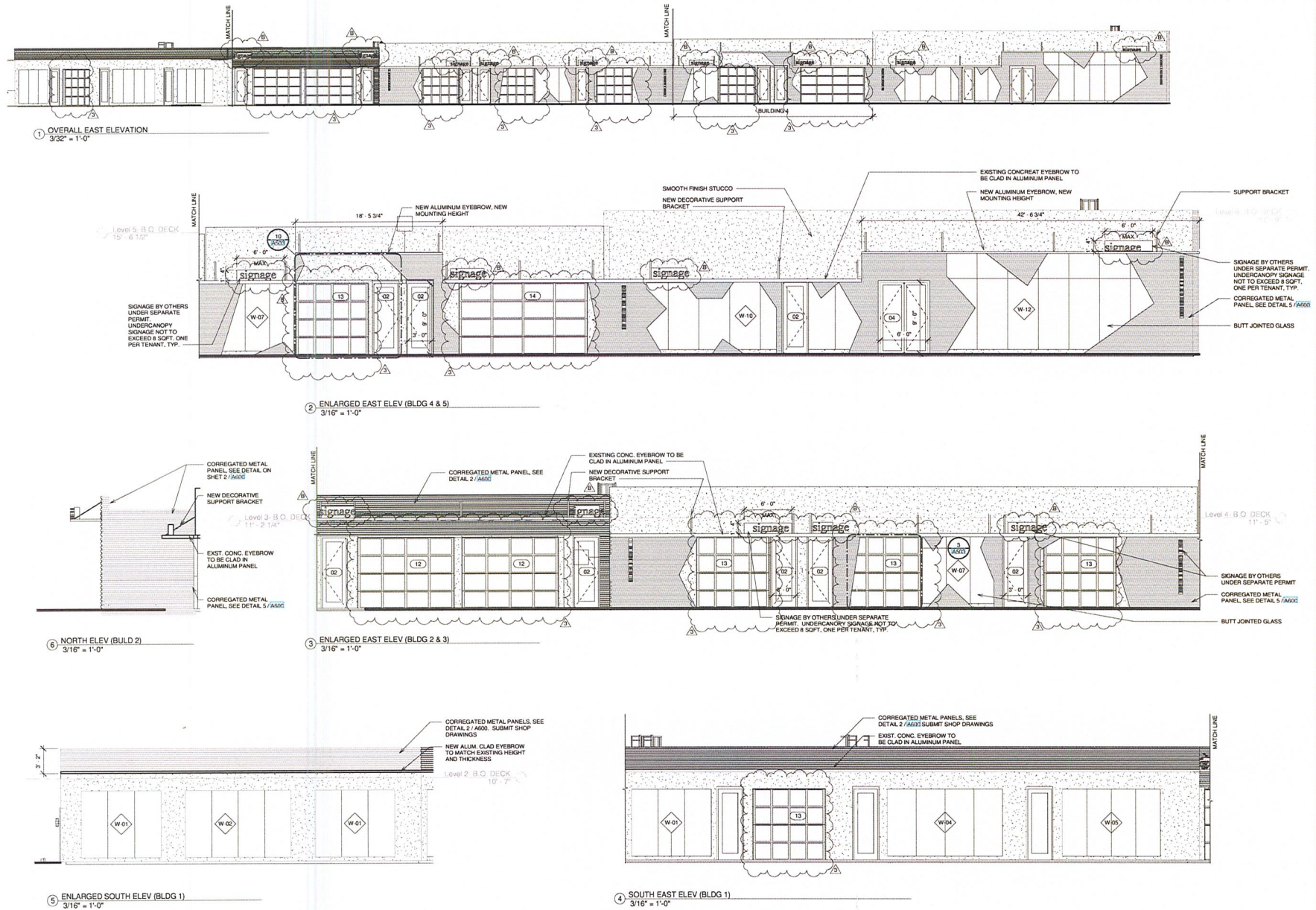
ELEVATIONS

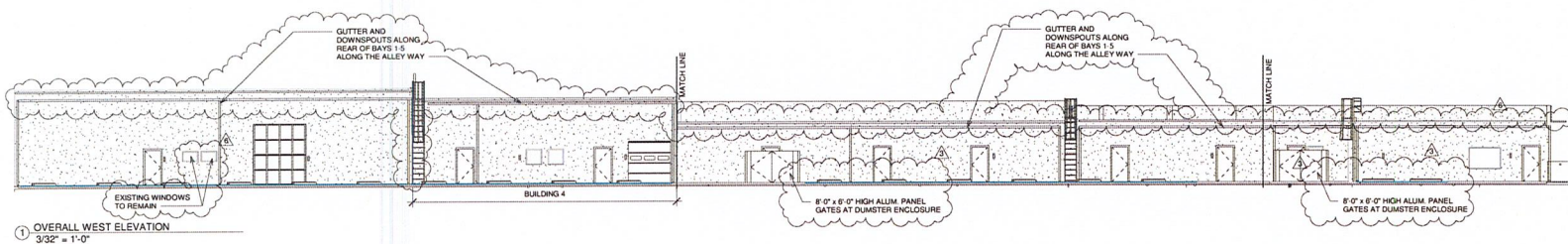
SHEET TITLE

DATE 12/21/17
DRAWN BY L.L.
REVIEWED BY C.B.

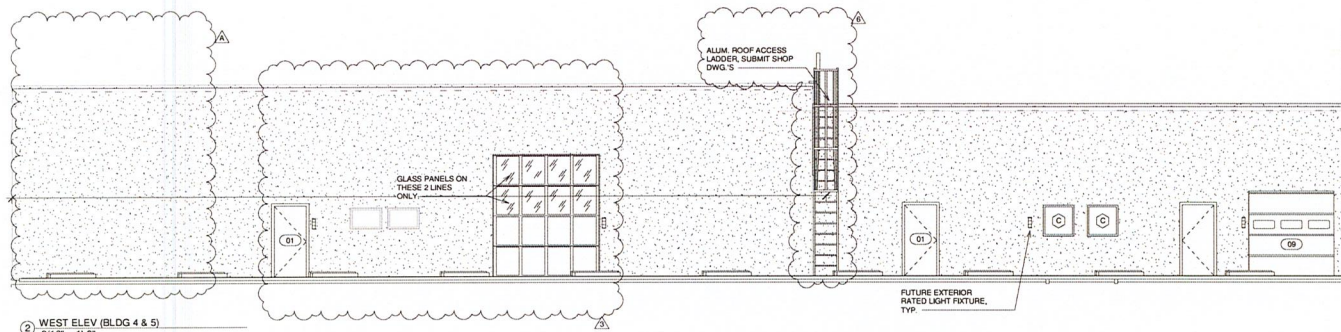
1752

SHEET A500

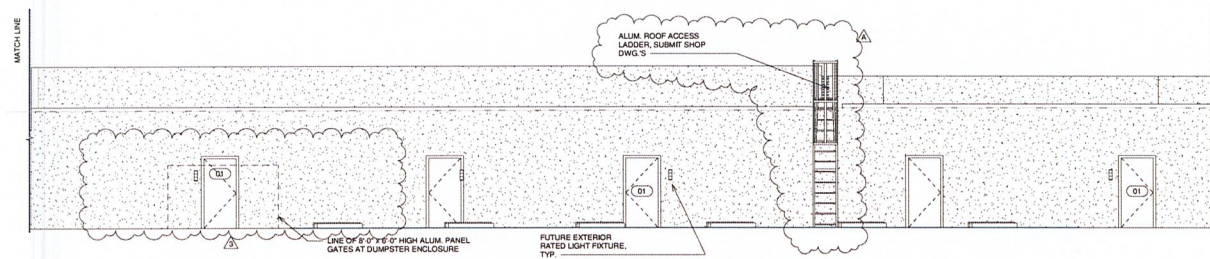




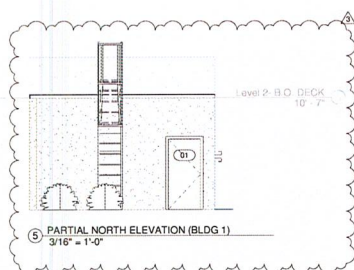
① OVERALL WEST ELEVATION
3/32" = 1'-0"



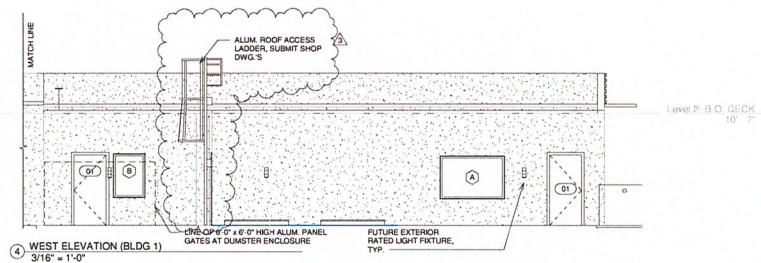
② WEST ELEV. (BLDG 4 & 5)
3/16" = 1'-0"



③ WEST ELEVATION (BLDG 2 & 3)
3/16" = 1'-0"



⑤ PARTIAL NORTH ELEVATION (BLDG 1)
3/16" = 1'-0"

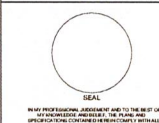


④ WEST ELEVATION (BLDG 1)
3/16" = 1'-0"

7440 SW 50 TER STE 102
Miami, FL 33155
786-515-2943 O
cbravo@urvanx.com
AA26002656
1526001472



Carlos J. Bravo, R.A. AR17584
I am a Licensed Professional Architect in the State of Florida.
I am a Licensed Professional Engineer in the State of Florida.
I am a Licensed Professional Surveyor in the State of Florida.
I am a Licensed Professional Geomatics Engineer in the State of Florida.
I am a Licensed Professional Environmental Engineer in the State of Florida.
I am a Licensed Professional Mechanical Engineer in the State of Florida.
I am a Licensed Professional Electrical Engineer in the State of Florida.
I am a Licensed Professional Civil Engineer in the State of Florida.
I am a Licensed Professional Chemical Engineer in the State of Florida.
I am a Licensed Professional Industrial Engineer in the State of Florida.
I am a Licensed Professional Aeronautical Engineer in the State of Florida.
I am a Licensed Professional Biomedical Engineer in the State of Florida.
I am a Licensed Professional Nuclear Engineer in the State of Florida.
I am a Licensed Professional Agricultural Engineer in the State of Florida.
I am a Licensed Professional Marine Engineer in the State of Florida.
I am a Licensed Professional Mining Engineer in the State of Florida.
I am a Licensed Professional Metallurgical Engineer in the State of Florida.
I am a Licensed Professional Petroleum Engineer in the State of Florida.
I am a Licensed Professional Tissue Engineering in the State of Florida.
I am a Licensed Professional Biotechnology in the State of Florida.
I am a Licensed Professional Food Engineering in the State of Florida.
I am a Licensed Professional Textile Engineering in the State of Florida.
I am a Licensed Professional Leather Engineering in the State of Florida.
I am a Licensed Professional Paper Engineering in the State of Florida.
I am a Licensed Professional Rubber Engineering in the State of Florida.
I am a Licensed Professional Plastic Engineering in the State of Florida.
I am a Licensed Professional Glass Engineering in the State of Florida.
I am a Licensed Professional Ceramic Engineering in the State of Florida.
I am a Licensed Professional Composite Engineering in the State of Florida.
I am a Licensed Professional Polymer Engineering in the State of Florida.
I am a Licensed Professional Fiber Engineering in the State of Florida.
I am a Licensed Professional Nanotechnology in the State of Florida.
I am a Licensed Professional Space Engineering in the State of Florida.
I am a Licensed Professional Ocean Engineering in the State of Florida.
I am a Licensed Professional Atmospheric Engineering in the State of Florida.
I am a Licensed Professional Environmental Engineering in the State of Florida.
I am a Licensed Professional Geological Engineering in the State of Florida.
I am a Licensed Professional Geotechnical Engineering in the State of Florida.
I am a Licensed Professional Seismic Engineering in the State of Florida.
I am a Licensed Professional Structural Engineering in the State of Florida.
I am a Licensed Professional Foundation Engineering in the State of Florida.
I am a Licensed Professional Geotechnical Engineering in the State of Florida.
I am a Licensed Professional Seismic Engineering in the State of Florida.
I am a Licensed Professional Structural Engineering in the State of Florida.
I am a Licensed Professional Foundation Engineering in the State of Florida.



SEAL

Level 5: B.O. DECK
13' - 6 1/2"

FLAGLER VILLAGE WAREHOUSES

801-819 NE 2ND AVE. FORT
LAUDERDALE, FL

BH3 DEVELOPMENT

PERMIT SET

REVISIONS		
No.	Description	Date
A	City Comments	11/21/2018
B	OWNER'S CHANGES	02/14/2020
C	On Site Coordination	07/22/2020

ELEVATIONS

SHEET TITLE		
DATE	12/21/17	
DRAWN BY	Author	1752
REVIEWED BY	Designer	

SHEET A501

7440 SW 50 TER, STE 102
Miami, FL 33155
786 515 2943
AA26002656
IB26001472



Carlos J. Bravo, P.E. AR17584

THE DESIGN AND CONSTRUCTION OF THIS PROJECT IS THE RESPONSIBILITY OF THE DESIGNER. THE DESIGNER IS NOT RESPONSIBLE FOR THE CONSTRUCTION OF THIS PROJECT OR THE PERFORMANCE OF THE CONSTRUCTION.

SEAL

SEAL

FLAGLER VILLAGE WAREHOUSES

801-818 NE 2ND AVE. FORT LAUDERDALE, FL

BH3 DEVELOPMENT

PERMIT SET

REVISIONS		
No.	Description	Date
1	City Comments	11.21.2018
2	OWNER CHANGES	03.25.2019
3	Coordination Changes	08.13.2019
4	OWNER CHANGES	02.14.2020
5	Change of E.O.R. General Revision	03.13.2020
6	On-Site Coordination	05.20.2020
7	On-Site Coordination	07.22.2020

FLOOR PLANS

SHEET TITLE

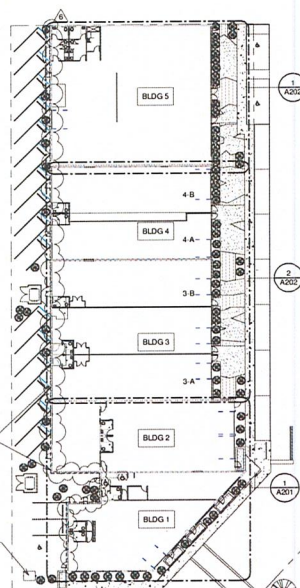
DATE 12/21/17

DRAWN BY L.L.

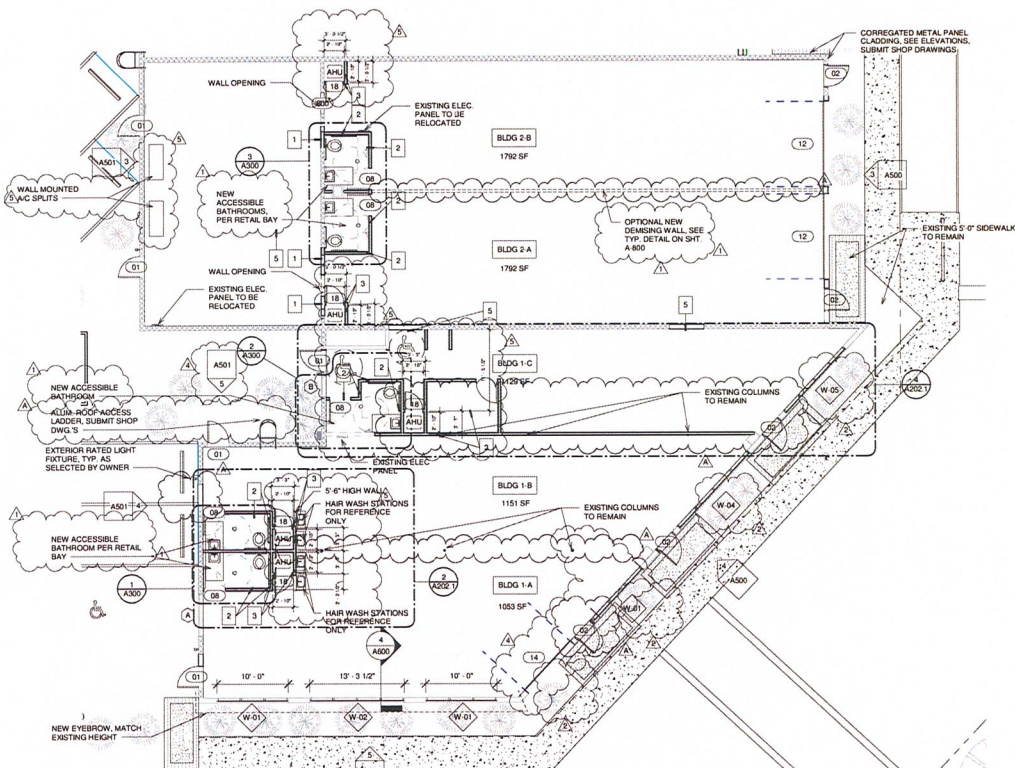
REVIEWED BY C.B.

1752

SHEET A201



2 OVERALL PLAN
1" = 30'-0"



1 ENLARGED PLANS- BLDG 1 & 2
1/8" = 1'-0"

DOOR SCHEDULE

GENERAL NOTES:

1. ADD SHM SPACE AS REQUIRED PER DOOR SUPPLIER TO EITHER SIDE OF EACH DOOR OPENING.
2. EXTERIOR DOORS SHALL HAVE DADE COUNTY PRODUCT APPROVAL. SUBMIT EXTERIOR DOOR SHOP DRAWINGS INDICATING COMPLIANCE WITH THE WIND PRESSURE LISTED HEREIN.
3. DOORS TO COMPLY WITH SECURITY AND FORCED ENTRY CODE.
4. ALL GLAZING TO BE CLEAR AND ALL FRAMES TO BE WHITE WITH LOW E COATING UNLESS OTHERWISE NOTED.
5. INSTALL IMPACT GLASS AT ALL EXTERIOR DOORS AND WINDOWS (NO SHUTTERS).
6. SHGC - 0.42 & U FACTOR - 0.89 MIN FOR GLASS L.

WINDOW SCHEDULE

GENERAL NOTES:

1. ADD SHM SPACE AS REQUIRED PER WINDOW SUPPLIER TO EITHER SIDE OF EACH DOOR OPENING.
2. WINDOWS SHALL HAVE DADE COUNTY PRODUCT APPROVAL. SUBMIT WINDOW SHOP DRAWINGS INDICATING COMPLIANCE WITH THE WIND PRESSURE LISTED HEREIN.
3. WINDOWS TO COMPLY WITH SECURITY AND FORCED ENTRY CODE.
4. WINDOWS USED AS A MEANS OF EGRESS TO COMPLY WITH FLORIDA BUILDING CODE SECTION 1025. THE CLEAR OPENINGS SHALL BE A MINIMUM OF 20" HIGH, MINIMUM OF 20" WIDE, MINIMUM OF 5.7 SF IN AREA OR A MINIMUM OF 5.0 SF IN AREA IF THE AREA OF THE OPENING IS ON THE GROUND LEVEL, AND THE BOTTOM OF THE WINDOW SHALL BE A MAXIMUM OF 44" A.F.F.
5. ALL GLAZING TO BE CLEAR AND ALL FRAMES TO BE WHITE WITH LOW E COATING UNLESS OTHERWISE NOTED.
6. INSTALL IMPACT GLASS AT ALL EXTERIOR DOORS AND WINDOWS (NO SHUTTERS).
7. SHGC - 0.42 & U FACTOR - 0.89 MIN FOR WINDOW GLASS.

NOTE:
ALL GLAZING IN DOORS, SIDELIGHTS AND WITHIN 48" OF DOORS TO BE A MINIMUM CATEGORY II SAFETY GLASS (FBC 10 R4410.2.4.3.)

Store Front

Mark	Length	Height	Comments
W-01	10' - 0"	8' - 6 1/4"	NOA #: 18-0314.06
W-02	13' - 3 1/2"	8' - 6 1/4"	NOA #: 18-0314.06
W-04	14' - 6"	8' - 6 1/4"	NOA #: 18-0314.06
W-05	12' - 4"	8' - 6 1/4"	NOA #: 18-0314.06
W-07			NOA #: 18-0314.06
W-10	12' - 0"	8' - 6 1/4"	NOA #: 18-0314.06
W-12	9' - 0"	12' - 2"	NOA #: 18-0314.06

Window Schedule

Mark	Width	Height	Description	Comments
A	6' - 1"	4' - 1"	FIXED	NOA #: 19-1119.04
B	3' - 0"	4' - 2"	FIXED	NOA #: 19-1119.04
C	3' - 0"	3' - 0"	FIXED	NOA #: 19-1119.04
D	3' - 0"	2' - 0"	FIXED	NOA #: 19-1119.04

Mark	Type Description	H.C. / S.C.	Width	Height	Thickness	Hardware	Label	Comments
01	FLUSH	S.C.	3' - 0"	6' - 8"	0' - 2"		90 Min.	
02	STORE FRONT		3' - 0"	9' - 0"	0' - 1 3/4"	B		NOA No. 18-0314.07
04	STORE FRONT		6' - 0"	9' - 0"	0' - 2"	B		NOA No. 18-0314.07
06			3' - 0"	9' - 0"	0' - 2"			
09	OVER HEAD		8' - 0"	8' - 0"		MANUAL OPERATION		NOA No. 18-0125.04
10	FLUSH	S.C.	3' - 0"	9' - 0"	0' - 2"	E	90 Min.	
11	STORE FRONT		3' - 0"	9' - 0"		F		NOA No. 18-0314.07
12	OVER HEAD		12' - 0"	9' - 0"	0' - 1 1/2"	MANUAL OPERATION		NOA No. 18-0129.14
13	OVER HEAD		8' - 3"	9' - 0"	0' - 1 1/2"	MANUAL OPERATION		NOA No. 18-0129.14
14	OVER HEAD		9' - 4"	9' - 0"	0' - 1 1/2"	MANUAL OPERATION		NOA No. 18-0129.14
15	OVER HEAD		16' - 0"	9' - 0"	0' - 1 1/2"	MANUAL OPERATION		NOA No. 18-0129.14
16	OVER HEAD		8' - 5"	9' - 0"	0' - 1 1/2"	MANUAL OPERATION		NOA No. 18-0129.14
17	OVER HEAD		9' - 2"	9' - 0"	0' - 1 1/2"	MANUAL OPERATION		NOA No. 18-0129.14
18	SWING		2' - 6"	6' - 8"	0' - 2"	METAL LOUVERED		
19	SWING		5' - 0"	6' - 8"	0' - 2"	METAL LOUVERED		

HARDWARE

MARK	TYPE	LOCK	COMMENT
A	PUSH BAR	THUMB TURN, KEYED OUTSIDE ONLY	PUSH BAR INSIDE ONLY. EXTERIOR PROVIDE DECORATIVE PULL. SELF CLOSURE, DEAD BOLT LOCK WEATHER STRIPPING, DCPA
B	PANIC HARDWARE	KEYED FROM OUTSIDE ONLY	SELF CLOSURE, DEADBOLT, WEATHER STRIPPING, DCPA
C	LEVER	LOCKABLE LATCH SET	
D	LEVER	PRIVACY LOCK	SELF CLOSING HINGE
E	LEVER	KEYED FROM OUTSIDE ONLY	SELF CLOSURE, WEATHER STRIPPING, DCPA
F	DECORATIVE PULL	KEYED FROM OUTSIDE ONLY	SELF CLOSURE, WEATHER STRIPPING, DCPA

CAM #20-0941

Exhibit 3

Page 8 of 17



SEAL

IN MY PROFESSIONAL JUDGEMENT AND TO THE BEST OF
MY KNOWLEDGE AND BELIEF, THE PLAN AND
SPECIFICATIONS CONTAINED HEREIN COMPLY WITH ALL

801-819 NE 2ND AVE. FORT
LAUDERDALE, FL

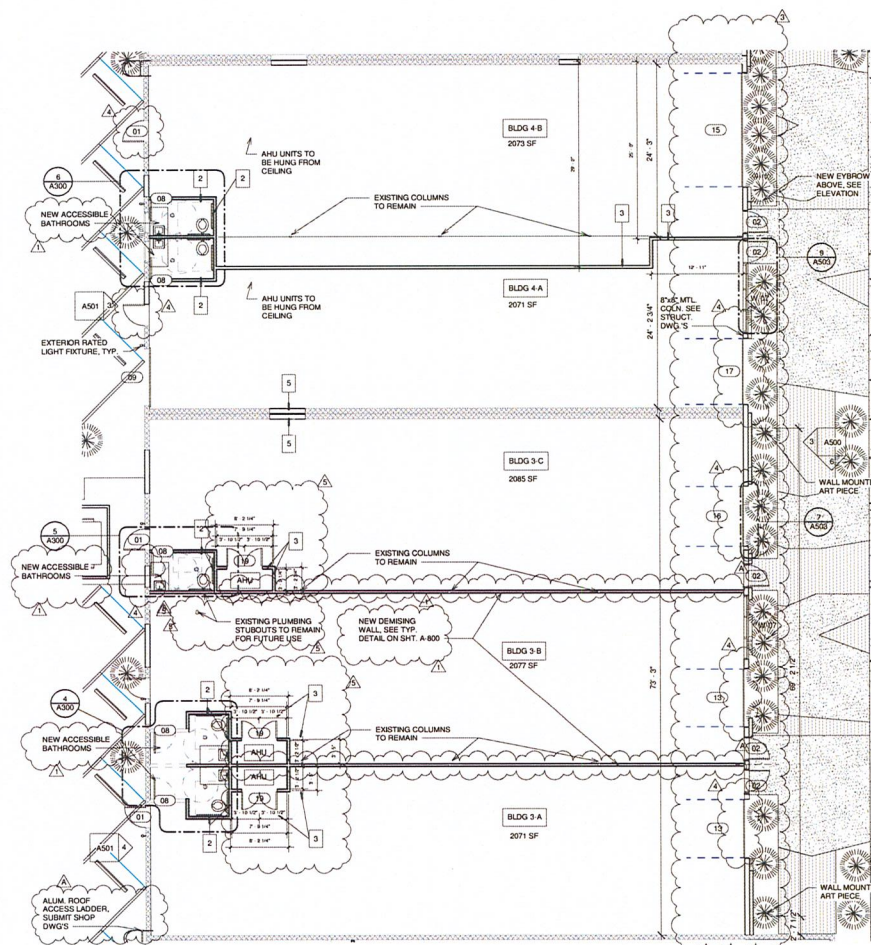
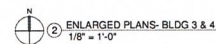
BH3 DEVELOPMENT

REVISIONS

FLOOR PLANS

DATE 12/21/17	1752
DRAWN BY LL	
REVIEWED BY CB	

SHEET A202



2
I [B]YANX



IN MY PROFESSIONAL JUDGEMENT AND TO THE BEST OF MY KNOWLEDGE AND BELIEF, THE PLANS AND SPECIFICATIONS CONTAINED HEREIN COMPLY WITH ALL APPLICABLE CODES, ORDINANCES, AND REGULATIONS.

801-819 NE 2ND AVE. FORT
LAUDERDALE, FL

BH3 DEVELOPMENT

PERMIT SET

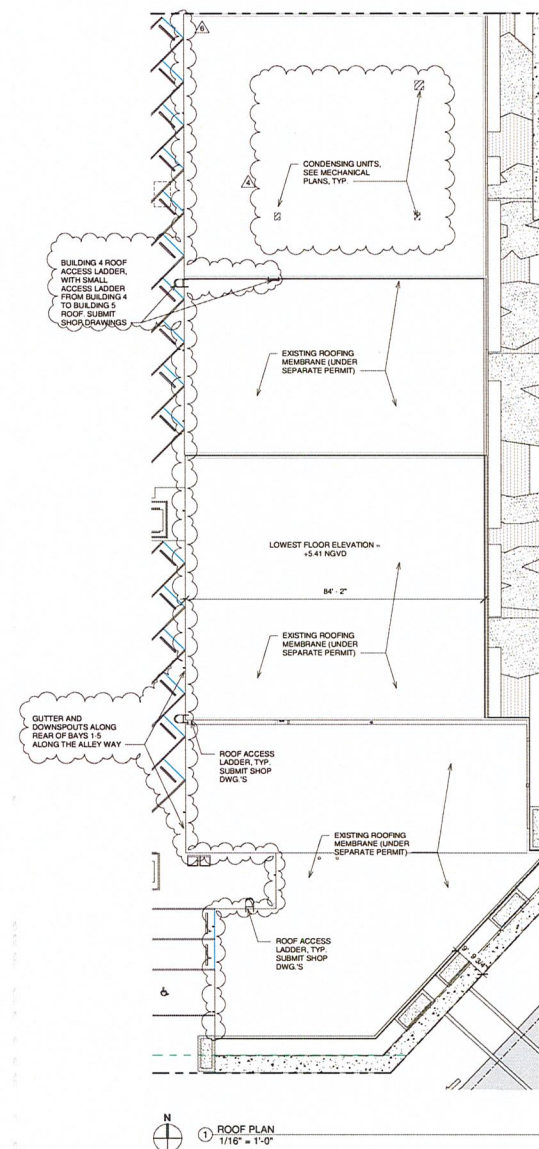
[illegible]

SHEET TITLE

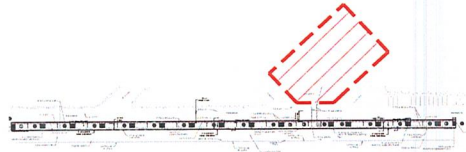
DATE 02/21/20
DRAWN BY Author
REVIEWED BY Designer

1752

SHEET A203



SHEET LOCATION INDEX



PLANT SCHEDULE FLAGLER VILLAGE WAREHOUSES

TREES	CODE	QTY	BOTANICAL / COMMON NAME	COMMENT
•	BS	6	Bumelia exonioides / Gumbo Limbo	Min. 12" DB HL, 2.5' Cal., Matched Hts.
•	CC	4	Casahuate surculosa / Casahuate	Min. 12" DB HL, 2.5' Cal., Matched Hts.
•	CD	5	Coccinifera guianensis / Pigeon Plum	Min. 12" DB HL, 2.5' Cal., Matched Hts.
•	DC	1	Dyneris latifolia / Catclaw Palm	45 Gal. Multi-Trunk
•	SS	3	Sabal palmetto / Cabbage Palmetto	Min. 8" x 10" C.T., Matched Hts., Shrub Trunk
•	TR	15	Thouasia latifolia / Florida Shrub Palm	6" DB HL
SHRUBS	CODE	QTY	BOTANICAL / COMMON NAME	COMMENT
•	AN	130	Agave attenuata / Sotol / Sotol	3 Gal., Full
•	GI	253	Crucianella sp. / Red Top / Red Top Coccoloba	3 Gal., Min. Ht. 24", Full
•	CD	2	Cordia alliodora / "Queen Ester" / "Queen Ester" / "Queen Ester"	7 Gal., 30" Min. Ht., 42" O.C.
•	LD	40	Leucosiphon thymoides / Texas Sage	3 Gal., Full
•	MC	22	Miconia laetevirens / Yellow Waxing Tree	3 Gal., Full
•	MM	20	Miconia laetevirens / Yellow Waxing Tree	3 Gal., Full
•	PK	15	Philodendron / "Rogo Congo" / Rogo Congo Philodendron	3 Gal., Full
•	PP	400	Platanus racemosa / "Pringles" / Dwarf Platanus	3 Gal., Min. 12" HL, Full
•	SPA	281	Sparganium angustifolium / Ground Orchid	3 Gal., 18" Min. Ht., 24" O.C.
•	TD	186	Thymus latifolius / Dwarf Thymus	3 Gal., Full
•	ZP	7	Zamia pumila / Cycad	7 Gal., Full
GROUND COVER	CODE	QTY	BOTANICAL / COMMON NAME	COMMENT
•	AG	1,332	Arundo donax / Perennial Grass	1 Gal.
•	TA	121	Thymus latifolius / Dwarf Thymus	1 Gal.

• DENOTES NATIVE MATERIAL

WAREHOUSE | LANDS

IMMEDIATE | TREES & PALMS

TREES

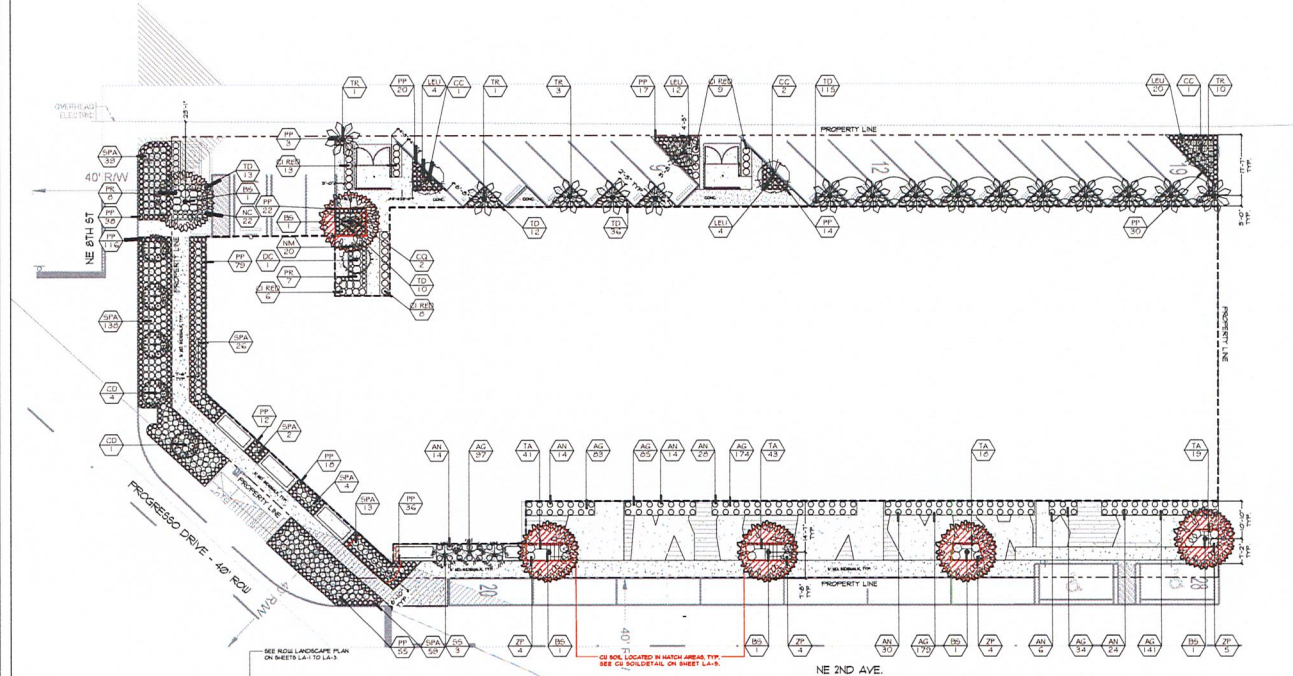
PROVIDED

IMMEDIATE | SHRUBS & ORNAM

(MIN. 24" HT.)

ROW (MIN. 24" HT.)

NOTE: SEE SHEET LA-5-6 FOR LANDSCAPE DETAILS & GENERAL NOTES
SEE SHEET HA-1 FOR PROPOSED HARDSCAPE PLAN.
(SEE CIVIL PLAN FOR LIMITS OF EXISTING SIDEWALK AND PROPOSED SIDEWALK.)



SCALE: 1/16" = 1'-0"



PROPOSED BUILDING LANDSCAPE PLAN

SCALE: 1/16" = 1'-0"

DAVID FONT DESIGN
INTERIOR DESIGN
7551 WILLES ROAD, SUITE 105B
FORT LAUDERDALE, FL 33304
PHONE: 954.588.8856 FAX: 954.773.9841
EMAIL: INFO@DAVIDFONTDESIGN.COM



FLAGLER VILLAGE WAREHOUSES
801-819 NE 2ND AVENUE
FORT LAUDERDALE, FL 33304

DAVID FONT, AIA, PLA
LA 0608022

REVISIONS

AS PER CITY COMMENTS 10.11.19

AS PER CITY COMMENTS 10.20.19

AS PER CITY COMMENTS 1.7.2020

SUBMITTAL

1/7/2020

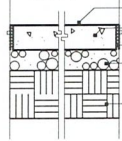
LA-4

CAM #20-0941

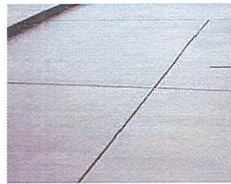
Exhibit 3

Page 12 of 17

WIDTH VARIES
(SEE PLAN)



SMOOTH STEEL TROWEL FINISH
CONCRETE SLAB REINFORCED AS REQ.
SYMMETRICAL SAW CUT EXP. JOINTS
AGGREGATE BASE AS REQUIRED
PREPARED SUBGRADE AS REQUIRED

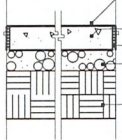


SMOOTH CONCRETE IMAGERY

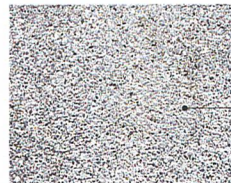
SMOOTH TROWEL FINISH DETAIL

NTS

WIDTH VARIES
(SEE PLAN)



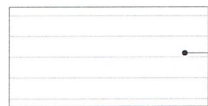
EXPOSED AGGREGATE FINISH.
SEE MATERIAL FINISH NOTE BELOW.
CONCRETE SLAB REINFORCED AS REQUIRED
SYMMETRICAL SAW CUT EXP. JOINTS
AGGREGATE BASE AS REQUIRED
PREPARED SUBGRADE AS REQUIRED



GRAY COLOR
SMOOTH AGGREGATE FINISH
(GROUND STONE WASHED)

EXPOSED AGGREGATE FINISH

NTS

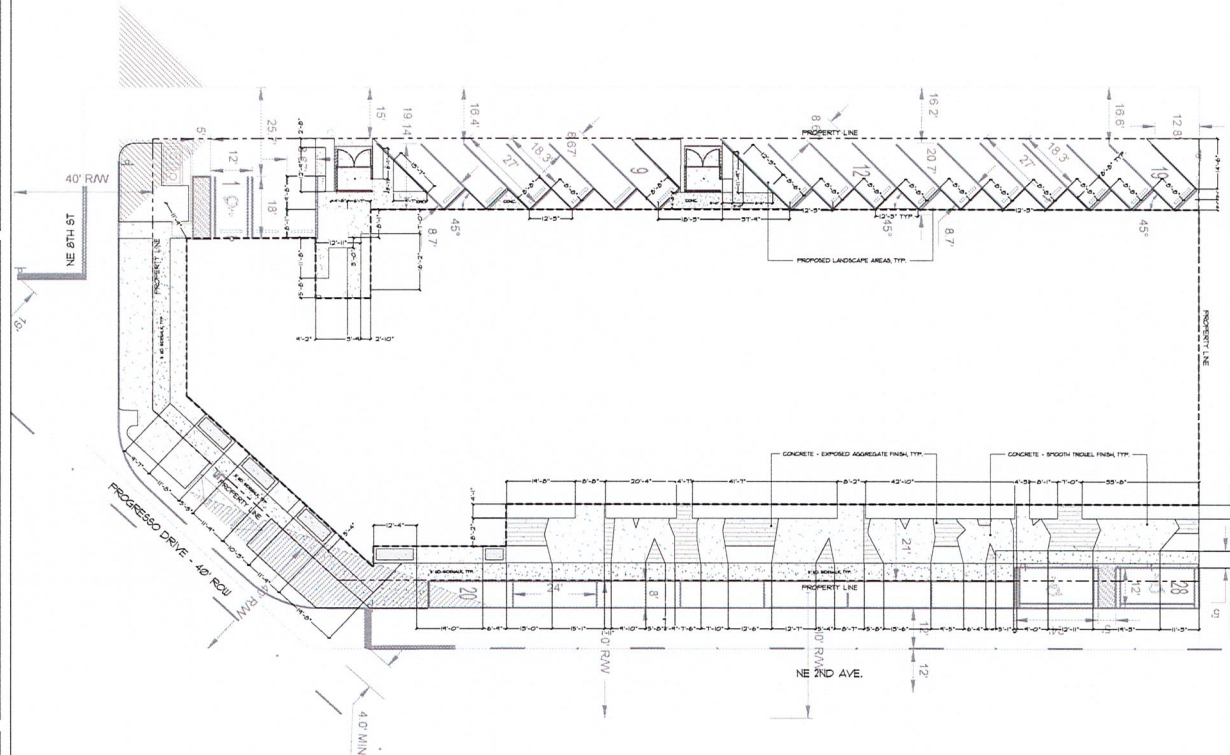


DENOTES AGGREGATE FINISH
(SEE FINISH DETAIL ABOVE)



DENOTES SMOOTH TROWEL FINISH
(SEE FINISH DETAIL ABOVE)

FINISH LEGEND



NOTES: 1. ALL CONCRETE WORK SHOWN FOR REFERENCE ONLY. PLEASE REFERENCE CIVIL PLANS FOR LIMITS OF EXISTING SIDEWALK AND PROPOSED SIDEWALK.

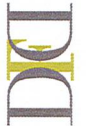
SCALE: 1/16" = 1'-0"



HARDSCAPE PLAN & SCHEDULE

SCALE: 1/16" = 1'-0"

DAVID FONT DESIGN
7551 WILSON BLVD., SUITE 105B
FORT LAUDERDALE, FL 33304
PHONE: 954.333.3667
EMAIL: INFO@DAVIDFONTDESIGN.COM



FLAGLER VILLAGE WAREHOUSES
801-819 NE 2ND AVENUE
FORT LAUDERDALE, FL 33304

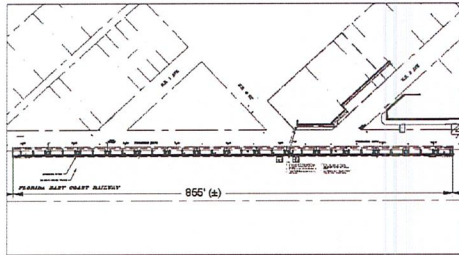
DAVID FONT, ASLA, PLA
LA 000000000

REVISIONS
AS PER CITY COMMENTS 10.11.19
AS PER CITY COMMENTS 10.20.19
AS PER CITY COMMENTS 1.7.2020

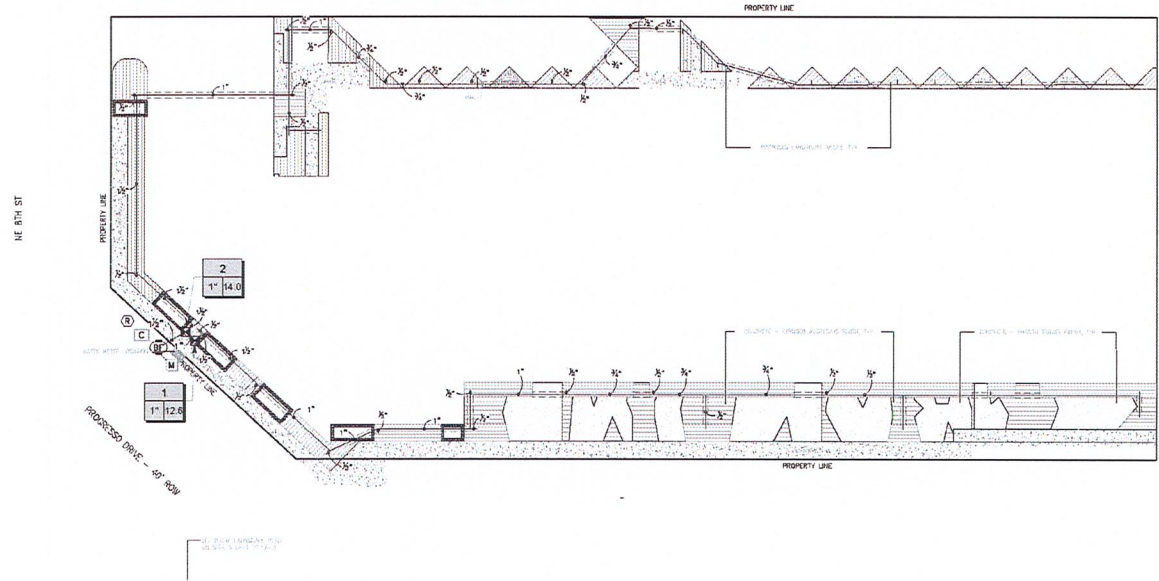
SUBMITTAL
1/7/2020

HA-1

SHEET LOCATION INDEX



- NOTE:
1. MAINLINE LOCATION IS SCHEMATIC ONLY.
 2. ALL CONTROL WIRE HAS TO BE IN CONDUIT IN ALL AREAS AND SLEEVED UNDER PAVING AND CONCRETE.
 3. ALL VALVES AND MAINLINE HAS TO BE INSTALLED IN LANDSCAPE AREA.
 4. PROVIDE 100% COVERAGE WITH 50% OVERLAP FOR ALL IRRIGATED AREA.
- SLEEVING:
1. ALL MAINLINE, LATERAL LINE PIPING AND CONTROL CONDUIT UNDER PAVING AND CONCRETE SHALL BE INSTALLED IN SEPARATE SLEEVES.
 2. ALL SLEEVES SHALL BE A MINIMUM OF TWICE (2X) THE DIAMETER OF THE PIPE TO BE SLEEVED. NO SLEEVE SHALL BE SMALLER THAN 2 INCHES.



IRRIGATION PLAN
SCALE: 1/16" = 1'-0"



CONSULTING GABLES INC.
PROFESSIONAL SEAL ON FILE
C.A. No. 28232
4437 W FLAGLER ST SUITE #8
CORAL GABLES, FL 33134
V: (786) 220-0083 F: (866) 328-7843
services@consultingables.com



DAVID FONTDESIGN
INTERIOR EXTERIOR
7551
CORAL SPRING, FL 32067
CALL: 904.433.6677
EMAIL: INFO@DAVIDFONTDESIGN.COM



FLAGLER VILLAGE WAREHOUSES
801-819 NE 2ND AVENUE
FORT LAUDERDALE, FL 33304

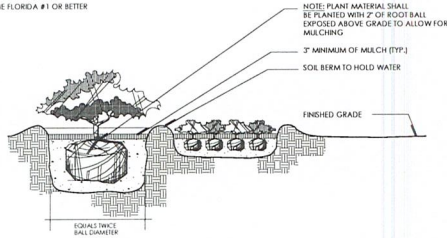
David Font
DAVID FONT, ASLA, PLS
L.A. 8888822

REVISIONS

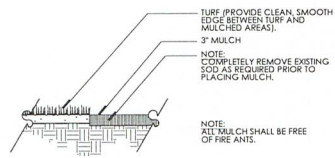
SUBMITTAL
7/30/2019

IR-4

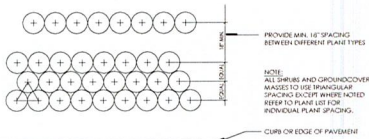
NOTE:
ALL PLANT MATERIAL
TO BE FLORIDA #1 OR BETTER



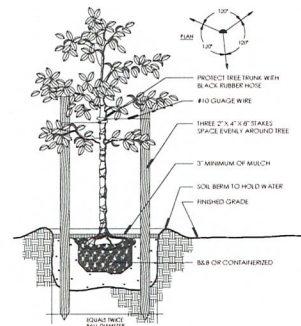
A SHRUB AND GROUND COVER DETAIL
SECTION
NOT TO SCALE



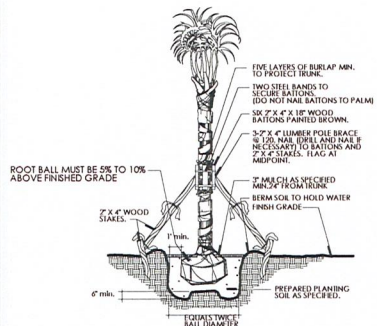
B TURF/MULCH DETAIL
SECTION
NOT TO SCALE



C SHRUB/GROUND COVER SPACING DETAIL
PLAN
NOT TO SCALE



D TREE DETAIL
SECTION
NOT TO SCALE



E PALM DETAIL
SECTION
NOT TO SCALE

LANDSCAPE NOTES

1. PLANT MATERIAL SHALL CONFORM TO THE GRADES AND STANDARDS FOR FLORIDA NO. 1 OR BETTER AS DESCRIBED IN "GRADES AND STANDARDS FOR NURSERY PLANTS" (LATEST EDITION) BY THE FLORIDA DEPARTMENT OF AGRICULTURE, CONSUMER SERVICES DIVISION.
2. TREES SHALL BE INSTALLED IN ACCORDANCE WITH THE STANDARDS OF THE NATIONAL ARBORIST ASSOCIATION.
3. ALL TREES SHALL BE INSTALLED IN ACCORDANCE WITH THE MINIMUM SIZES SHOWN.
4. TOPSOIL SHALL BE CLEAN AND FREE OF CONSTRUCTION DEBRIS, WEEDS, ROCKS, NOXIOUS PESTS AND DISEASES. IF NECESSARY, AMEND TOPSOIL WITH HORTICULTURALLY ACCEPTABLE ORGANIC MATERIAL.
5. PLANTING PIT: ALL TREES AND SHRUBS SHALL BE PLANTED IN A PLANTING SOIL CONSISTING OF A MIXTURE OF 50% MUCK AND 50% CLEAN, BROWN SAND. PLANTING HOLES WILL BE TWICE THE SIZE OF THE ROOT BALL OF THE TREE OR SHRUB BEING PLANTED.
6. MULCHING: ALL EXPOSED SOIL AREAS IN PLANTING BEDS, INCLUDING HEDGE ROWS, SHALL BE KEPT WEED FREE AND MULCHED TO A MINIMUM THREE (3) INCH DEPTH, EXCEPT THAT NO MULCH SHALL BE REQUIRED IN ANNUAL BEDS. THE TYPE OF MULCH SHALL BE SHREDDED AND COMPOSTED MELALEUCA TREE, GRADE "B". AT A MINIMUM, PROVIDE A 24 INCH RING OF MULCH AROUND TREE TRUNKS LOCATED IN GRASS AREAS. ** ONLY NON-CYPRESS MULCH IS ALLOWED AND THE MULCH BE KEPT AT LEAST 6 INCHES AWAY FROM TREE AND PALM TRUNKS. NO DYED MULCH SHALL BE USED ON THE SITE.
7. PLANT LIST QUANTITIES ARE PROVIDED FOR CONVENIENCE. IN THE EVENT OF QUANTITY DISCREPANCIES, THE DRAWING SHALL TAKE PRECEDENCE. IT IS THE CONTRACTOR'S RESPONSIBILITY TO VERIFY PLANT MATERIAL QUANTITIES, INCLUDING SOD, SOIL AND MULCH.
8. TREES AND PALMS SHALL BE GUYED OR STAKED AS PER THE DETAILS.
9. EXISTING IRRIGATION SYSTEM TO BE ADJUSTED SO THAT IT PROVIDES 110 PERCENT COVERAGE, RUST-FREE WITH 50 PERCENT MINIMUM OVERLAP AND AN AUTOMATIC RAIN SENSOR, PROVIDE USE OF BUBBLERS ON ALL TREE AND PALM INSTALLATION.
10. THE IRRIGATION SYSTEM SHALL INCLUDE A RAIN SENSOR DEVICE WHICH WILL LIMIT THE OPERATION OF THE SYSTEM IF SUFFICIENT RAINFALL HAS OCCURRED.
11. SOD: THE SPECIES OF GRASS FOR LAWNS SHALL BE ST. AUGUSTINE "FLORATAM" AND SHALL BE INSTALLED AS SOLID SOD.
12. COORDINATE THE FINAL PLACEMENT OF TREES WITH THE PLACEMENT OF LAMP POST LIGHTING.
13. CONTRACTOR SHALL ENSURE THAT ADEQUATE WATER IS SUFFICIENTLY ESTABLISH PLANT MATERIAL UNTIL IRRIGATION IS 100% OPERABLE.
14. NO SUBSTITUTIONS SHALL BE MADE WITHOUT WRITTEN AUTHORIZATION NEWLY INSTALLED PLANTINGS TO SUPPLIED IN NECESSARY QUANTITIES TO ALL FROM THE L.A. OR CLIENT
15. IN AREAS WHERE PAVED SURFACES ADJUT SOD OR MULCH, THE FINAL GRADE LEVEL OF BOTH SURFACES SHOULD BE EVLN.
16. NO STREET TREE SHALL BE PLANTED LESS THAN (25) FEET FROM ANY STREET CORNER, MEASURED FROM THE POINT OF INTERSECTING CURBS OR ROADWAY PAVEMENT EDGES.
17. ALL MATERIAL SHALL BE FERTILIZED WITH THE APPROPRIATE FERTILIZER OR TABLETS IMMEDIATELY UPON INSTALLATION.
18. LANDSCAPE AREAS, INCLUDING LANDSCAPED ISLANDS, WITHIN OR ABUTTING VEHICULAR USE AREAS SHALL BE EXCAVATED TO A DEPTH OF TWO AND A HALF FEET (2 1/2') TO ENSURE THAT ADEQUATE PLANTING SOIL EXISTS. PARKING LOT BASE COURSE MATERIAL, UMEROCK, ASPHALT, AND OTHER SIMILAR MATERIAL SHALL BE REMOVED TO A DEPTH OF TWO AND A HALF FEET (2 1/2')
19. EXISTING TREES AND PALMS REMAINING MUST BE STRUCTURALLY PRUNED BY PROFESSIONALLY LICENCED TREE COMPANY.
20. ALL TREES SHOULD BE PLANTED SO THAT THE TRUNK FLAIR IS VISIBLE AT THE TOP OF THE ROOT BALL. THE TOP OF THE ROOT BALL SHALL BE PLANTED SO THAT IT IS 5% TO 10% ABOVE FINISH GRADE. SOIL MUST NOT BE PLACED OVER THE ROOT BALL.

LANDSCAPE PLAN CALCULATIONS

GRADE DATA

- Current Use of Property and Intensity: Vacant
- Land Use Designation: BUSINESS
- Zoning Designation: NURAG-HU-NE
- Water/Wastewater Service Provider: City of Fort Lauderdale
- Total # of Parking Spaces Provided: 51 (28 On-Site + 23 Along R.O.U.)
- Total Site Area (Sq. Ft. and Acres): 36,340 SF (0.84 Acres)

COMMON AREA

- Total Common Open Space Required: N/A
- Total Common Open Space Provided: 25,000 SF

GREEN AREA

- Total Green Area Required: N/A
- Total Green Area Provided: 2,482 SF

VIA LANDSCAPE REQUIREMENTS:

- Requirement: Min. % of VUA Landscape Area Required + N/A
Provided + 24%
- Requirement: (1) Tree per 1,000 SF of VUA Required + N/A
Provided + (10) TREES + (4) PALMS
- Requirement: (6) Shrubs per 1,000 SF of VUA Required + N/A
Provided + 193

- 2. STREET TREE REQUIREMENTS: Total Length of All Street Frontage + 385' L.F.
• Requirement: (1) Tree (XX' HL) per XX' L.F. of Street Frontage Required + N/A
Provided + (23) TREES + (9) PALMS

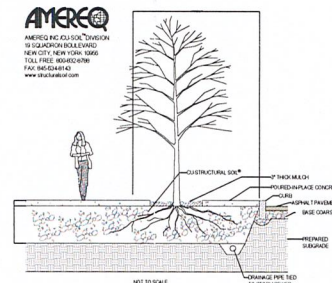
INTERIOR LANDSCAPE REQUIREMENTS:

- Requirement: (1) Tree per 1,000 SF of Net Lot Area Required + N/A
Provided + (1) TREE + (1) PALM
- Requirement: (12) Shrubs per 1,000 SF of Net Lot Area Required + N/A
Provided + 392

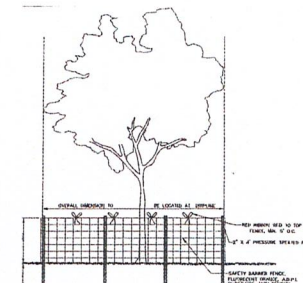
Florida-Friendly Landscape Requirements:

- Requirement: Maximum % of Landscape Area Used as Turfgrass Allowed + N/A
Provided + 0%
- Requirement: Minimum % of Native Trees + Palms Required + N/A
Provided + 11%
- Requirement: Minimum % of Native Shrubs Required + N/A
Provided + 85%

NOTE: SEE LANDSCAPE CALCULATION BREAK-DOWN ON SHEET LA-4.



F TYPICAL STREET PLANTING
SECTION
NOT TO SCALE



G TREE PROTECTION BARRICADE DETAIL
SECTION
NOT TO SCALE

DAVID FONT DESIGN
INTERIOR EXTERIOR
7551
COSAS SPRING, FL 33067
EMAIL: INFO@DAVIDFONTDESIGN.COM



FLAGLER VILLAGE WAREHOUSES
801-819-NE 2ND AVENUE
FORT LAUDERDALE, FL 33304

DAVID FONT, ASIA, RLA
LA 6668822

REVISIONS
AS PER CITY COMMENTS 10.11.19
AS PER CITY COMMENTS 10.28.19
AS PER CITY COMMENTS 1.7.2020

SUBMITTAL
1/7/2020

LA-5

Applicable Documents:

- A. These Specifications and the requirements hereafter will govern the project during the installation, guarantee and maintenance period.

Scope of Work:

- A. The work specified by this Section of the Specifications and on the Plans consists of furnishing all labor, materials, tools, apparatus, means of transportation, supplies, equipment, materials, services and incinerators necessary to complete the work as indicated on the Plans and in the Specifications as well as all other related responsibilities, including all change and repairs incident thereto.
- B. The work shall include, but not be limited to, furnishing material, root pruning where required, repair, protection to the public, excavation, installation, backfilling, grading, fertilizing, mulching, staking and guying where required, watering, pruning where required, add insulation, weeding, cleanup, maintenance and guarantee.

- C. Quantities and Location. The Landscape Architect reserves the right to adjust the numbers and locations of the designated plants and species to be used at any of the locations shown in order to provide for any modifications which might be necessary.

- D. Investigation of Subsurface Condition. The Contractor shall be responsible for having the subsurface investigation and examination as he or she deems in order to conduct familiar with the character of the existing material and the construction conditions under which he or she will work. These subsurface investigations and examination shall be included in the bid. The Contractor shall not receive separate, additional compensation for this.

- E. The Landscape Architect will be paid for only those units that are installed at the site of growth or at the site before planting for compliance with the requirements for time, variety, size, and color. The Contractor shall be responsible for the right to follow inspect trees and shrubs for size and condition of bark and trunk and for the health, injury, and stem defects, and to try to reject unsatisfactory or defective material at any time during the progress of work. The Landscape Architect shall remove rejected trees or shrubs within 1 day from the date of rejection.

- F. Ten percent (10%) of the total contract price will be held as retainer for 30 days after final written acceptance.

- G. The Landscape Architect will coordinate his work with all other trades at the job site.

Quality Assurance:

- A. The Landscape Architect may inspect trees, shrubs, and groundcover either at the site of growth or at the site before planting for compliance with the requirements for time, variety, size, and color. The Contractor shall be responsible for the right to follow inspect trees and shrubs for size and condition of bark and trunk and for the health, injury, and stem defects, and to try to reject unsatisfactory or defective material at any time during the progress of work. The Landscape Architect shall remove rejected trees or shrubs within 1 day from the date of rejection.

- B. Responsibility for Assessing Quality of Work:

- (1) The Contractor's Superintendent shall speak English and be well versed in Florida plant names, planting operations, Plant and Standards for Nursery Plants, and coordinate with other contractors or service in the project, and coordination between the nursery and the Landscape Architect.
- (2) All employees shall be competent and highly skilled in their particular job in order to properly perform the work assigned to them. The Contractor shall be responsible for maintaining the quality of the material on the project.
- (3) The Contractor will comply with applicable Federal, State, County and local requirements governing landscape materials and work.

- C. Grade Standards:

- (1) Plant material shall be Florida # or better as set forth in the latest edition of the Florida Department of Agriculture's Grades and Standards for Nursery Plants.
- (2) All plant material will be subject to the approval of the Landscape Architect for quality, size and color. Plants lacking the completeness or proper proportion, plants which are weak or thin, and plants injured by close planting in nursery rows will not be accepted. Plant materials which have been cut back from larger grades to meet certain specification requirements will be rejected.
- (3) Plant material shall have normal well-developed branches and shall be vigorous plants, free from defects, decay, burn, chipping, roots, sun-scorch, injury, abrasion of the bark, plant diseases, insect pest eggs, stems, and all forms of infestations or objectionable deformities.

- D. Delivery, Handling and Storage:

- A. Delivery and Handling:
- (1) Movement of nursery stock shall comply with all Federal, State, and local laws, regulations, ordinances, codes and orders. The material shall be registered between all parties concerned, but not receive final approval by the Landscape Architect.
- (2) Protect during delivery to prevent damage to root ball or desiccation of leaves. Remove unacceptable plant materials immediately from the job site. Material on project, until stored at the site.
- (3) Transport materials on vehicles large enough to allow plants not to be crowded and damaged. Plants will be covered to prevent wind damage during transit.
- (4) Deliver soil on pallets with root system protected from exposure to wind. Deliver soil capable of being installed within 48 hours of cutting.

- B. Submittals & Approvals:

- A. Written request for approval to substitute a plant species or a plant designation (DB, DBH, CO, etc.) type, quantity, quality, size, quantity, etc. due to the non-availability of material in the project. The Contractor shall be responsible for the material before the material is delivered and installed on the project. The Contractor shall not receive separate, additional compensation for this.
- B. Any request for the approval of an equal shall be in writing. Approval shall be given by the Landscape Architect before the material is delivered and installed on the project.

- C. Submit shop drawings for any special conditions not covered in the details indicated. This shall be for approval by the Landscape Architect before they are prepared in the project.

- D. If requested by the Owner or Landscape Architect submit a schedule of all specimen plant material and collected plant material indicating the sources or suppliers of these materials and their locations for approval by the Landscape Architect before they are delivered and installed on the project. Also, two color photographs of each specimen item, showing different views of the item shall be submitted with the schedule. Additional color photographs shall be submitted, if requested.

- E. If requested by the Owner or Landscape Architect, submit a letter indicating the sources or suppliers of all soil and the grade to be supplied for approval by the Landscape Architect before it is delivered and installed on the project.

- F. If requested by the Owner or Landscape Architect, submit a sample and schedule of all planting soil types for approval by the Landscape Architect before the material is delivered and installed on the project. Submit a sample of the soil for approval by the Landscape Architect.

- G. If requested by the Owner or Landscape Architect, submit sources of the material before the material is delivered and installed on the project.
- H. Submit prints of shop drawing for all staking and guying methods to be used. If the area indicated in these Specifications and on the Plans are not to be implemented, staking and guying methods before they are implemented in the project. The Landscape Architect will approve all shop drawings of the project.

- I. Submit in writing any indication to the owner routine maintenance or lack of, that may affect installed plants in the project. The Contractor shall be responsible for the maintenance of the plants, but not for the maintenance of the plants.

- J. Submit in writing any indication to the timely completion of the material.

- K. Submit and Certificate of Inspection of plant material as may be required by State, local or Federal Authorities.

Substitutions:

- A. When the specific plant designation (DBH, DBH, CO, etc.) type, grade, quality, size, quantity, etc. of a material is not available, the Contractor shall submit a written request to the Landscape Architect for a substitution listing the plant, variety, size, and color. The Contractor shall be responsible for the right to follow inspect trees and shrubs for size and condition of bark and trunk and for the health, injury, and stem defects, and to try to reject unsatisfactory or defective material at any time during the progress of work. The Landscape Architect shall remove rejected trees or shrubs within 1 day from the date of rejection.

- B. The Landscape Architect will be paid for only those units that are installed at the site of growth or at the site before planting for compliance with the requirements for time, variety, size, and color. The Contractor shall be responsible for the right to follow inspect trees and shrubs for size and condition of bark and trunk and for the health, injury, and stem defects, and to try to reject unsatisfactory or defective material at any time during the progress of work. The Landscape Architect shall remove rejected trees or shrubs within 1 day from the date of rejection.

- C. The Contractor will coordinate his work with all other trades at the job site.

- D. The Contractor will coordinate his work with all other trades at the job site.

- E. The Contractor will coordinate his work with all other trades at the job site.

- F. The Contractor will coordinate his work with all other trades at the job site.

- G. The Contractor will coordinate his work with all other trades at the job site.

- H. The Contractor will coordinate his work with all other trades at the job site.

- I. The Contractor will coordinate his work with all other trades at the job site.

- J. The Contractor will coordinate his work with all other trades at the job site.

- K. The Contractor will coordinate his work with all other trades at the job site.

- L. The Contractor will coordinate his work with all other trades at the job site.

- M. The Contractor will coordinate his work with all other trades at the job site.

- N. The Contractor will coordinate his work with all other trades at the job site.

- O. The Contractor will coordinate his work with all other trades at the job site.

- P. The Contractor will coordinate his work with all other trades at the job site.

- Q. The Contractor will coordinate his work with all other trades at the job site.

- R. The Contractor will coordinate his work with all other trades at the job site.

- S. The Contractor will coordinate his work with all other trades at the job site.

- T. The Contractor will coordinate his work with all other trades at the job site.

- U. The Contractor will coordinate his work with all other trades at the job site.

- V. The Contractor will coordinate his work with all other trades at the job site.

- W. The Contractor will coordinate his work with all other trades at the job site.

- X. The Contractor will coordinate his work with all other trades at the job site.

- Y. The Contractor will coordinate his work with all other trades at the job site.

- Z. The Contractor will coordinate his work with all other trades at the job site.

- A. On the Plans, figures and details shall govern over scaled dimensions. If there is any error or discrepancy in a drawing, the scaled dimensions shall govern over the scaled dimensions. If there is any error or discrepancy in a drawing, the scaled dimensions shall govern over the scaled dimensions.

- B. The Contractor shall be responsible for the maintenance of the plants, but not for the maintenance of the plants. The Contractor shall be responsible for the maintenance of the plants, but not for the maintenance of the plants.

- C. The Contractor shall be responsible for the maintenance of the plants, but not for the maintenance of the plants. The Contractor shall be responsible for the maintenance of the plants, but not for the maintenance of the plants.

- D. The Contractor shall be responsible for the maintenance of the plants, but not for the maintenance of the plants. The Contractor shall be responsible for the maintenance of the plants, but not for the maintenance of the plants.

- E. The Contractor shall be responsible for the maintenance of the plants, but not for the maintenance of the plants. The Contractor shall be responsible for the maintenance of the plants, but not for the maintenance of the plants.

- F. The Contractor shall be responsible for the maintenance of the plants, but not for the maintenance of the plants. The Contractor shall be responsible for the maintenance of the plants, but not for the maintenance of the plants.

- G. The Contractor shall be responsible for the maintenance of the plants, but not for the maintenance of the plants. The Contractor shall be responsible for the maintenance of the plants, but not for the maintenance of the plants.

- H. The Contractor shall be responsible for the maintenance of the plants, but not for the maintenance of the plants. The Contractor shall be responsible for the maintenance of the plants, but not for the maintenance of the plants.

- I. The Contractor shall be responsible for the maintenance of the plants, but not for the maintenance of the plants. The Contractor shall be responsible for the maintenance of the plants, but not for the maintenance of the plants.

- J. The Contractor shall be responsible for the maintenance of the plants, but not for the maintenance of the plants. The Contractor shall be responsible for the maintenance of the plants, but not for the maintenance of the plants.

- K. The Contractor shall be responsible for the maintenance of the plants, but not for the maintenance of the plants. The Contractor shall be responsible for the maintenance of the plants, but not for the maintenance of the plants.

- L. The Contractor shall be responsible for the maintenance of the plants, but not for the maintenance of the plants. The Contractor shall be responsible for the maintenance of the plants, but not for the maintenance of the plants.

- M. The Contractor shall be responsible for the maintenance of the plants, but not for the maintenance of the plants. The Contractor shall be responsible for the maintenance of the plants, but not for the maintenance of the plants.

- N. The Contractor shall be responsible for the maintenance of the plants, but not for the maintenance of the plants. The Contractor shall be responsible for the maintenance of the plants, but not for the maintenance of the plants.

- O. The Contractor shall be responsible for the maintenance of the plants, but not for the maintenance of the plants. The Contractor shall be responsible for the maintenance of the plants, but not for the maintenance of the plants.

- P. The Contractor shall be responsible for the maintenance of the plants, but not for the maintenance of the plants. The Contractor shall be responsible for the maintenance of the plants, but not for the maintenance of the plants.

- Q. The Contractor shall be responsible for the maintenance of the plants, but not for the maintenance of the plants. The Contractor shall be responsible for the maintenance of the plants, but not for the maintenance of the plants.

- R. The Contractor shall be responsible for the maintenance of the plants, but not for the maintenance of the plants. The Contractor shall be responsible for the maintenance of the plants, but not for the maintenance of the plants.

- S. The Contractor shall be responsible for the maintenance of the plants, but not for the maintenance of the plants. The Contractor shall be responsible for the maintenance of the plants, but not for the maintenance of the plants.

- T. The Contractor shall be responsible for the maintenance of the plants, but not for the maintenance of the plants. The Contractor shall be responsible for the maintenance of the plants, but not for the maintenance of the plants.

- U. The Contractor shall be responsible for the maintenance of the plants, but not for the maintenance of the plants. The Contractor shall be responsible for the maintenance of the plants, but not for the maintenance of the plants.

- V. The Contractor shall be responsible for the maintenance of the plants, but not for the maintenance of the plants. The Contractor shall be responsible for the maintenance of the plants, but not for the maintenance of the plants.

- W. The Contractor shall be responsible for the maintenance of the plants, but not for the maintenance of the plants. The Contractor shall be responsible for the maintenance of the plants, but not for the maintenance of the plants.

- X. The Contractor shall be responsible for the maintenance of the plants, but not for the maintenance of the plants. The Contractor shall be responsible for the maintenance of the plants, but not for the maintenance of the plants.

- Y. The Contractor shall be responsible for the maintenance of the plants, but not for the maintenance of the plants. The Contractor shall be responsible for the maintenance of the plants, but not for the maintenance of the plants.

- Z. The Contractor shall be responsible for the maintenance of the plants, but not for the maintenance of the plants. The Contractor shall be responsible for the maintenance of the plants, but not for the maintenance of the plants.

- A. The Contractor shall be responsible for the maintenance of the plants, but not for the maintenance of the plants. The Contractor shall be responsible for the maintenance of the plants, but not for the maintenance of the plants.

- B. The Contractor shall be responsible for the maintenance of the plants, but not for the maintenance of the plants. The Contractor shall be responsible for the maintenance of the plants, but not for the maintenance of the plants.

- C. The Contractor shall be responsible for the maintenance of the plants, but not for the maintenance of the plants. The Contractor shall be responsible for the maintenance of the plants, but not for the maintenance of the plants.

- D. The Contractor shall be responsible for the maintenance of the plants, but not for the maintenance of the plants. The Contractor shall be responsible for the maintenance of the plants, but not for the maintenance of the plants.

- E. The Contractor shall be responsible for the maintenance of the plants, but not for the maintenance of the plants. The Contractor shall be responsible for the maintenance of the plants, but not for the maintenance of the plants.

- F. The Contractor shall be responsible for the maintenance of the plants, but not for the maintenance of the plants. The Contractor shall be responsible for the maintenance of the plants, but not for the maintenance of the plants.

- G. The Contractor shall be responsible for the maintenance of the plants, but not for the maintenance of the plants. The Contractor shall be responsible for the maintenance of the plants, but not for the maintenance of the plants.

- H. The Contractor shall be responsible for the maintenance of the plants, but not for the maintenance of the plants. The Contractor shall be responsible for the maintenance of the plants, but not for the maintenance of the plants.

- I. The Contractor shall be responsible for the maintenance of the plants, but not for the maintenance of the plants. The Contractor shall be responsible for the maintenance of the plants, but not for the maintenance of the plants.

- J. The Contractor shall be responsible for the maintenance of the plants, but not for the maintenance of the plants. The Contractor shall be responsible for the maintenance of the plants, but not for the maintenance of the plants.

- K. The Contractor shall be responsible for the maintenance of the plants, but not for the maintenance of the plants. The Contractor shall be responsible for the maintenance of the plants, but not for the maintenance of the plants.

- L. The Contractor shall be responsible for the maintenance of the plants, but not for the maintenance of the plants. The Contractor shall be responsible for the maintenance of the plants, but not for the maintenance of the plants.

- M. The Contractor shall be responsible for the maintenance of the plants, but not for the maintenance of the plants. The Contractor shall be responsible for the maintenance of the plants, but not for the maintenance of the plants.

- N. The Contractor shall be responsible for the maintenance of the plants, but not for the maintenance of the plants. The Contractor shall be responsible for the maintenance of the plants, but not for the maintenance of the plants.

- O. The Contractor shall be responsible for the maintenance of the plants, but not for the maintenance of the plants. The Contractor shall be responsible for the maintenance of the plants, but not for the maintenance of the plants.

- P. The Contractor shall be responsible for the maintenance of the plants, but not for the maintenance of the plants. The Contractor shall be responsible for the maintenance of the plants, but not for the maintenance of the plants.

- Q. The Contractor shall be responsible for the maintenance of the plants, but not for the maintenance of the plants. The Contractor shall be responsible for the maintenance of the plants, but not for the maintenance of the plants.

- R. The Contractor shall be responsible for the maintenance of the plants, but not for the maintenance of the plants. The Contractor shall be responsible for the maintenance of the plants, but not for the maintenance of the plants.

- S. The Contractor shall be responsible for the maintenance of the plants, but not for the maintenance of the plants. The Contractor shall be responsible for the maintenance of the plants, but not for the maintenance of the plants.

- T. The Contractor shall be responsible for the maintenance of the plants, but not for the maintenance of the plants. The Contractor shall be responsible for the maintenance of the plants, but not for the maintenance of the plants.

- U. The Contractor shall be responsible for the maintenance of the plants, but not for the maintenance of the plants. The Contractor shall be responsible for the maintenance of the plants, but not for the maintenance of the plants.

- V. The Contractor shall be responsible for the maintenance of the plants, but not for the maintenance of the plants. The Contractor shall be responsible for the maintenance of the plants, but not for the maintenance of the plants.

- W. The Contractor shall be responsible for the maintenance of the plants, but not for the maintenance of the plants. The Contractor shall be responsible for the maintenance of the plants, but not for the maintenance of the plants.

- X. The Contractor shall be responsible for the maintenance of the plants, but not for the maintenance of the plants. The Contractor shall be responsible for the maintenance of the plants, but not for the maintenance of the plants.

- Y. The Contractor shall be responsible for the maintenance of the plants, but not for the maintenance of the plants. The Contractor shall be responsible for the maintenance of the plants, but not for the maintenance of the plants.

- Z. The Contractor shall be responsible for the maintenance of the plants, but not for the maintenance of the plants. The Contractor shall be responsible for the maintenance of the plants, but not for the maintenance of the plants.

- A. The Contractor shall be responsible for the maintenance of the plants, but not for the maintenance of the plants. The Contractor shall be responsible for the maintenance of the plants, but not for the maintenance of the plants.

- B. The Contractor shall be responsible for the maintenance of the plants, but not for the maintenance of the plants. The Contractor shall be responsible for the maintenance of the plants, but not for the maintenance of the plants.

- C. The Contractor shall be responsible for the maintenance of the plants, but not for the maintenance of the plants. The Contractor shall be responsible for the maintenance of the plants, but not for the maintenance of the plants.

- D. The Contractor shall be responsible for the maintenance of the plants, but not for the maintenance of the plants. The Contractor shall be responsible for the maintenance of the plants, but not for the maintenance of the plants.

- E. The Contractor shall be responsible for the maintenance of the plants, but not for the maintenance of the plants. The Contractor shall be responsible for the maintenance of the plants, but not for the maintenance of the plants.

- F. The Contractor shall be responsible for the maintenance of the plants, but not for the maintenance of the plants. The Contractor shall be responsible for the maintenance of the plants, but not for the maintenance of the plants.

- G. The Contractor shall be responsible for the maintenance of the plants, but not for the maintenance of the plants. The Contractor shall be responsible for the maintenance of the plants, but not for the maintenance of the plants.

- H. The Contractor shall be responsible for the maintenance of the plants, but not for the maintenance of the plants. The Contractor shall be responsible for the maintenance of the plants, but not for the maintenance of the plants.

- I. The Contractor shall be responsible for the maintenance of the plants, but not for the maintenance of the plants. The Contractor shall be responsible for the maintenance of the plants, but not for the maintenance of the plants.

- J. The Contractor shall be responsible for the maintenance of the plants, but not for the maintenance of the plants. The Contractor shall be responsible for the maintenance of the plants, but not for the maintenance of the plants.

- K. The Contractor shall be responsible for the maintenance of the plants, but not for the maintenance of the plants. The Contractor shall be responsible for the maintenance of the plants, but not for the maintenance of the plants.

- L. The Contractor shall be responsible for the maintenance of the plants, but not for the maintenance of the plants. The Contractor shall be responsible for the maintenance of the plants, but not for the maintenance of the plants.

- M. The Contractor shall be responsible for the maintenance of the plants, but not for the maintenance of the plants. The Contractor shall be responsible for the maintenance of the plants, but not for the maintenance of the plants.

- N. The Contractor shall be responsible for the maintenance of the plants, but not for the maintenance of the plants. The Contractor shall be responsible for the maintenance of the plants, but not for the maintenance of the plants.

- O. The Contractor shall be responsible for the maintenance of the plants, but not for the maintenance of the plants. The Contractor shall be responsible for the maintenance of the plants, but not for the maintenance of the plants.

- P. The Contractor shall be responsible for the maintenance of the plants, but not for the maintenance of the plants. The Contractor shall be responsible for the maintenance of the plants, but not for the maintenance of the plants.

- Q. The Contractor shall be responsible for the maintenance of the plants, but not for the maintenance of the plants. The Contractor shall be responsible for the maintenance of the plants, but not for the maintenance of the plants.

- R. The Contractor shall be responsible for the maintenance of the plants, but not for the maintenance of the plants. The Contractor shall be responsible for the maintenance of the plants, but not for the maintenance of the plants.

- S. The Contractor shall be responsible for the maintenance of the plants, but not for the maintenance of the plants. The Contractor shall be responsible for the maintenance of the plants, but not for the maintenance of the plants.

- T. The Contractor shall be responsible for the maintenance of the plants, but not for the maintenance of the plants. The Contractor shall be responsible for the maintenance of the plants, but not for the maintenance of the plants.

- U. The Contractor shall be responsible for the maintenance of the plants, but not for the maintenance of the plants. The Contractor shall be responsible for the maintenance of the plants, but not for the maintenance of the plants.

- V. The Contractor shall be responsible for the maintenance of the plants, but not for the maintenance of the plants. The Contractor shall be responsible for the maintenance of the plants, but not for the maintenance of the plants.

- W. The Contractor shall be responsible for the maintenance of the plants, but not for the maintenance of the plants. The Contractor shall be responsible for the maintenance of the plants, but not for the maintenance of the plants.

- X. The Contractor shall be responsible for the maintenance of the plants, but not for the maintenance of the plants. The Contractor shall be responsible for the maintenance of the plants, but not for the maintenance of the plants.

- Y. The Contractor shall be responsible for the maintenance of the plants, but not for the maintenance of the plants. The Contractor shall be responsible for the maintenance of the plants, but not for the maintenance of the plants.

- Z. The Contractor shall be responsible for the maintenance of the plants, but not for the maintenance of the plants. The Contractor shall be responsible for the maintenance of the plants, but not for the maintenance of the plants.

- A. The Contractor shall be responsible for the maintenance of the plants, but not for the maintenance of the plants. The Contractor shall be responsible for the maintenance of the plants, but not for the maintenance of the plants.

- B. The Contractor shall be responsible for the maintenance of the plants, but not for the maintenance of the plants. The Contractor shall be responsible for the maintenance of the plants, but not for the maintenance of the plants.

- C. The Contractor shall be responsible for the maintenance of the plants, but not for the maintenance of the plants. The Contractor shall be responsible for the maintenance of the plants, but not for the maintenance of the plants.

- D. The Contractor shall be responsible for the maintenance of the plants, but not for the maintenance of the plants. The Contractor shall be responsible for the maintenance of the plants, but not for the maintenance of the plants.

- E. The Contractor shall be responsible for the maintenance of the plants, but not for the maintenance of the plants. The Contractor shall be responsible for the maintenance of the plants, but not for the maintenance of the plants.

- F. The Contractor shall be responsible for the maintenance of the plants, but not for the maintenance of the plants. The Contractor shall be responsible for the maintenance of the plants, but not for the maintenance of the plants.

- G. The Contractor shall be responsible for the maintenance of the plants, but not for the maintenance of the plants. The Contractor shall be responsible for the maintenance of the plants, but not for the maintenance of the plants.

- H. The Contractor shall be responsible for the maintenance of the plants, but not for the maintenance of the plants. The Contractor shall be responsible for the maintenance of the plants, but not for the maintenance of the plants.

EXCAVATION

Excavation:

- A. Utilities (Above Ground and Underground):

- (1) The work area may have existing utilities, such as, but not limited to, irrigation, phone, electrical and storm sewer. The location of some of these existing utilities have been indicated on the Plans. The Contractor shall be responsible for the maintenance of the plants, but not for the maintenance of the plants. The Contractor shall be responsible for the maintenance of the plants, but not for the maintenance of the plants.

- (2) The Contractor shall take immediate steps to repair, replace or restore all services to any utilities or other facilities which are damaged due to his or her additional outside services which may be necessary to prosecute repairs on a continuous "around the clock" basis until services are restored. He or she shall also provide and operate any supplemental temporary services to maintain uninterrupted flow of the facilities. The cost involved in the repairs and restoring damaged service resulting from negligence on the part of the Contractor shall be borne by the Contractor and he or she shall be fully responsible for any and all claims resulting from the damage.

- (3) Should utilities, structures, etc. be encountered which interfere with the work, the Landscape Architect shall be consulted immediately in order for a decision to be made on the location of the work so as to not clear the obstruction. If the obstruction cannot be relocated, the Contractor shall not purposefully disrupt or disconnect any type of utility underground without first obtaining the written permission of the Landscape Architect. Requests for disconnection must be in writing and received by the Landscape Architect at least 72 hours prior to the time of the requested interruption.

Grades:

- A. It shall be the responsibility of the Contractor to provide the final grading so the final level for planting areas conform to surrounding grades and it is the proper elevation of the site. The Contractor shall be responsible for the maintenance of the plants, but not for the maintenance of the plants. The Contractor shall be responsible for the maintenance of the plants, but not for the maintenance of the plants.

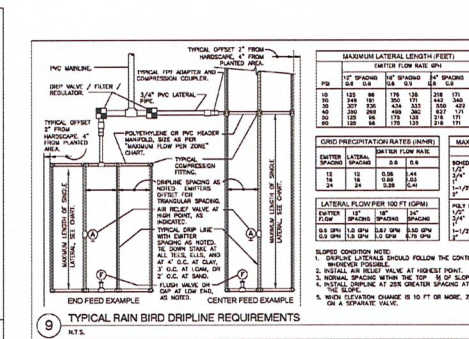
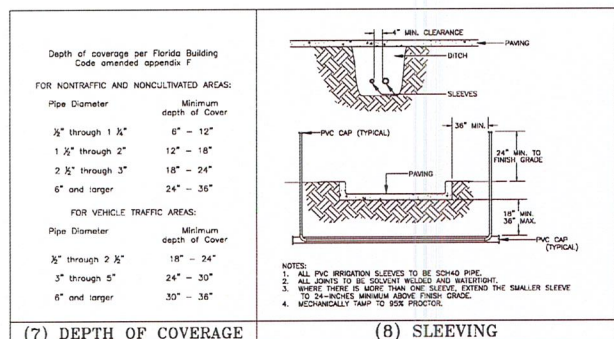
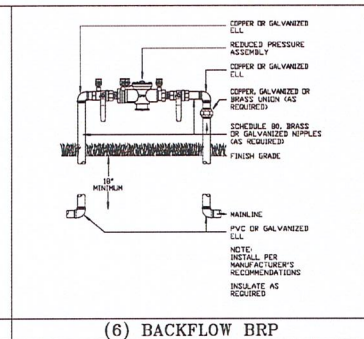
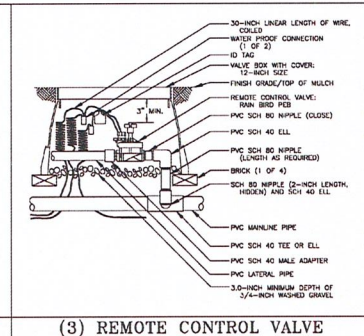
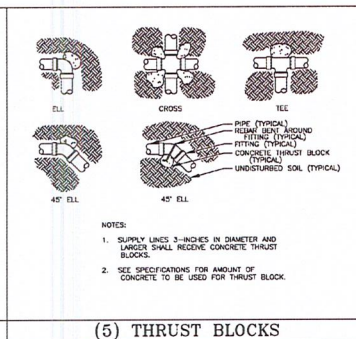
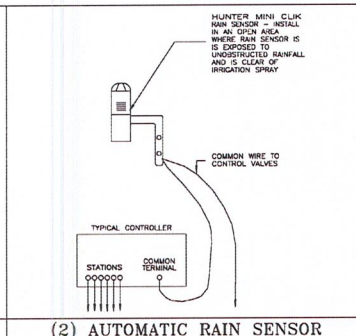
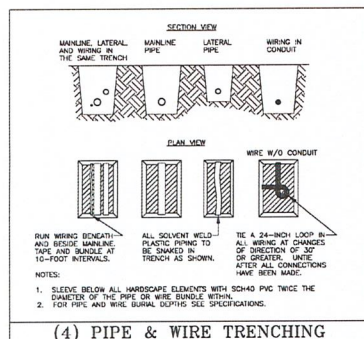
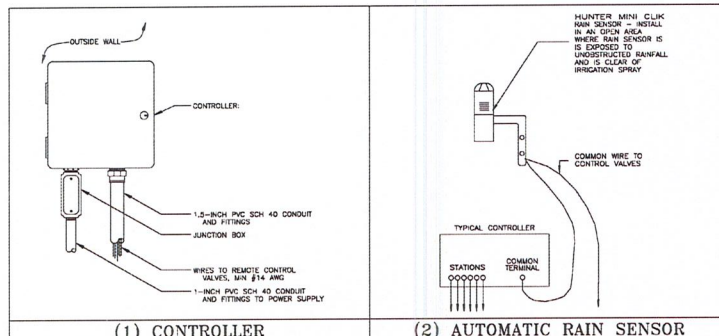
- B. Plant Area next to Pavement: All planting areas next to pavement shall be graded to the same level as the pavement. The Contractor shall be responsible for the maintenance of the plants, but not for the maintenance of the plants. The Contractor shall be responsible for the maintenance of the plants, but not for the maintenance of the plants.

Excavation:

- A. Staking Plant Locations: Stake or mark plant material location prior to plant hole excavation based on information from the plans.
- B. Spacing of Groundcover: 1 Shrub: The location of a shrub bed (or shrub or groundcover) shall be marked, staked, and the Contractor shall be responsible for the maintenance of the plants, but not for the maintenance of the plants. The Contractor shall be responsible for the maintenance of the plants, but not for the maintenance of the plants.

- C. The Contractor shall be responsible for the maintenance of the plants, but not for the maintenance of the plants. The Contractor shall be responsible for the maintenance of the plants, but not for the maintenance of the plants. The Contractor shall be responsible for the maintenance of the plants, but not for the maintenance of the plants.

- D. Subsurface Conditions:



CONTRACTOR MUST COMPLY WITH FLORIDA BUILDING CODE AMENDED APPENDIX P.

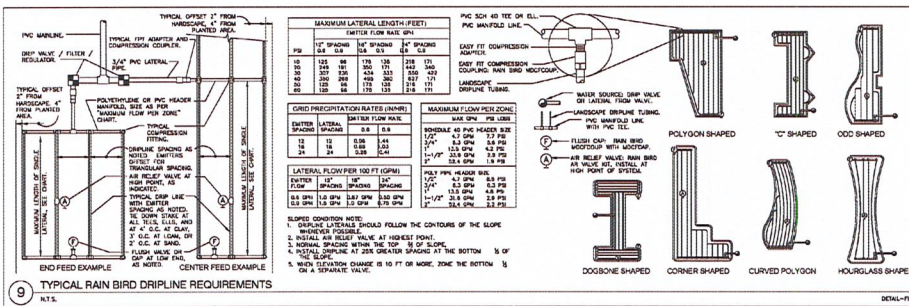
NO PRODUCT SUBSTITUTIONS OR CHANGES WILL BE ALLOWED WITHOUT THE EXPRESSED WRITTEN CONSENT OF THE OWNER AND THE IRRIGATOR CONSULTANT.

GENERAL NOTES:

- All mainline, lateral line and control wire conduit under paving shall be installed in separate sleeves. Sleeves shall be a substitution of smaller pipe sizes shall be permitted, but substitutions of larger sizes may be approved. All damaged and rejected pipe shall be removed from the site at the time of said rejection.
- Pipe sizes shall conform to those shown on the drawings. The substitution of smaller pipe sizes shall be permitted, but substitutions of larger sizes may be approved. All damaged and rejected pipe shall be removed from the site at the time of said rejection.
- Install of backflow prevention devices and all piping between the point of connection into the backflow preventer as per local codes.
- Final location of the backflow preventer and automatic controller shall be approved by the owner's subsoil representative.
- 120 VAC electrical power source at controller location shall be provided by others. The electrical contractor shall make the final connection from the electrical source to the controller.
- All sprinkler heads shall be set perpendicular to finish grade unless otherwise specified.
- The irrigation contractor shall flush and adjust all sprinkler heads and valves for optimum spray with minimal overspray onto walks, streets, walls, etc.
- The design is diagrammatic. All piping, valves, etc., shown within paved areas is for design confirmation only and the contractor shall locate all valves in which areas where possible.
- It is the responsibility of the irrigation contractor to familiarize himself with all grade differences, location of walls, existing wells, structures and utilities. The irrigation contractor shall repair or replace all items damaged by his work. He shall coordinate his work with other contractors for the location and installation of pipe sleeves through walls, under roadways and pavements.
- Do not willfully install the sprinkler system as shown on the drawings when it is obvious in the field that unknown obstructions, gross differences or differences in the dimensions exist that might not have been considered in the engineering. In the event this modification is not performed, the irrigation contractor shall assume full responsibility for any reliance necessary.
- All sprinkler heads shall not otherwise detailed or specified shall be installed as per manufacturer's recommendations and specifications.
- The irrigation contractor shall install check valves on all heads in areas where gross pressure is not, what point valve shut-off of dripping, of the irrigation head occurs or as directed by the owner's authorized representative.
- The contractor shall provide 1800 PDS (pressure compensating screens) as necessary to reduce or eliminate overspray onto streets, walks or other areas as directed by the owner's authorized representative.
- All remote control valves, gate valves, quick couplers, control wire and controller cable pull stations shall be installed in approved valves boxes with covers. All shall be marked indicating controller and station numbers for control valve boxes and/or listed in the equipment legend with 1" white heat braided letters.
- All control wires shall be installed in PVC conduit, min #14 AWG.
- Installer is required to conduct final testing and adjustment to achieve design specification prior to completion of the system and acceptance by the owner or owner's representative.
- Contractor to provide owner with post construction documentation, including as-built drawings, recommended maintenance schedules and activities, operational schedule, energy precipitation rates, system adjusting methods for decreasing water once landscape is established, water source and shut-off method and all operational guides for controller.
- A map of the system shall be kept in a readily available location with details for operation.
- If the water supply for irrigation system is a well water, a constant pressure low control device of pressure tank is required to minimize pump "cycling".
- Check valves must be installed at irrigation heads as needed to prevent low head drainage and sucking. Nozzle precipitation rates for all heads within each zone circuit must be matched to within 20% of one another.

IRRIGATION SCHEDULE									
SYMBOL	MANUFACTURE/MODEL/DESCRIPTION	QTY							
B	Rain Bird XZC-100-PMB-COM	1							
	Value Free Day Control for Commercial Applications, 1" Bell Valve with 1" PDS Valve and 1" Pressure Regulating Valve	1							
	Quick-Check Unit in 1/2" NPT x 1/2" NPT	1							
C	Area to Receive Drilling	4,619.4							
	Rain Bird XZC-100-PMB-COM	1							
	Value Free Day Control for Commercial Applications, 1" Bell Valve with 1" PDS Valve and 1" Pressure Regulating Valve	1							
D	Area to Receive Drilling	4,619.4							
	Rain Bird XZC-100-PMB-COM	1							
	Value Free Day Control for Commercial Applications, 1" Bell Valve with 1" PDS Valve and 1" Pressure Regulating Valve	1							
E	Area to Receive Drilling	4,619.4							
	Rain Bird XZC-100-PMB-COM	1							
	Value Free Day Control for Commercial Applications, 1" Bell Valve with 1" PDS Valve and 1" Pressure Regulating Valve	1							
F	Area to Receive Drilling	4,619.4							
	Rain Bird XZC-100-PMB-COM	1							
	Value Free Day Control for Commercial Applications, 1" Bell Valve with 1" PDS Valve and 1" Pressure Regulating Valve	1							
G	Area to Receive Drilling	4,619.4							
	Rain Bird XZC-100-PMB-COM	1							
	Value Free Day Control for Commercial Applications, 1" Bell Valve with 1" PDS Valve and 1" Pressure Regulating Valve	1							
H	Area to Receive Drilling	4,619.4							
	Rain Bird XZC-100-PMB-COM	1							
	Value Free Day Control for Commercial Applications, 1" Bell Valve with 1" PDS Valve and 1" Pressure Regulating Valve	1							
I	Area to Receive Drilling	4,619.4							
	Rain Bird XZC-100-PMB-COM	1							
	Value Free Day Control for Commercial Applications, 1" Bell Valve with 1" PDS Valve and 1" Pressure Regulating Valve	1							
J	Area to Receive Drilling	4,619.4							
	Rain Bird XZC-100-PMB-COM	1							
	Value Free Day Control for Commercial Applications, 1" Bell Valve with 1" PDS Valve and 1" Pressure Regulating Valve	1							
K	Area to Receive Drilling	4,619.4							
	Rain Bird XZC-100-PMB-COM	1							
	Value Free Day Control for Commercial Applications, 1" Bell Valve with 1" PDS Valve and 1" Pressure Regulating Valve	1							
L	Area to Receive Drilling	4,619.4							
	Rain Bird XZC-100-PMB-COM	1							
	Value Free Day Control for Commercial Applications, 1" Bell Valve with 1" PDS Valve and 1" Pressure Regulating Valve	1							
M	Area to Receive Drilling	4,619.4							
	Rain Bird XZC-100-PMB-COM	1							
	Value Free Day Control for Commercial Applications, 1" Bell Valve with 1" PDS Valve and 1" Pressure Regulating Valve	1							
N	Area to Receive Drilling	4,619.4							
	Rain Bird XZC-100-PMB-COM	1							
	Value Free Day Control for Commercial Applications, 1" Bell Valve with 1" PDS Valve and 1" Pressure Regulating Valve	1							
O	Area to Receive Drilling	4,619.4							
	Rain Bird XZC-100-PMB-COM	1							
	Value Free Day Control for Commercial Applications, 1" Bell Valve with 1" PDS Valve and 1" Pressure Regulating Valve	1							
P	Area to Receive Drilling	4,619.4							
	Rain Bird XZC-100-PMB-COM	1							
	Value Free Day Control for Commercial Applications, 1" Bell Valve with 1" PDS Valve and 1" Pressure Regulating Valve	1							
Q	Area to Receive Drilling	4,619.4							
	Rain Bird XZC-100-PMB-COM	1							
	Value Free Day Control for Commercial Applications, 1" Bell Valve with 1" PDS Valve and 1" Pressure Regulating Valve	1							
R	Area to Receive Drilling	4,619.4							
	Rain Bird XZC-100-PMB-COM	1							
	Value Free Day Control for Commercial Applications, 1" Bell Valve with 1" PDS Valve and 1" Pressure Regulating Valve	1							
S	Area to Receive Drilling	4,619.4							
	Rain Bird XZC-100-PMB-COM	1							
	Value Free Day Control for Commercial Applications, 1" Bell Valve with 1" PDS Valve and 1" Pressure Regulating Valve	1							
T	Area to Receive Drilling	4,619.4							
	Rain Bird XZC-100-PMB-COM	1							
	Value Free Day Control for Commercial Applications, 1" Bell Valve with 1" PDS Valve and 1" Pressure Regulating Valve	1							
U	Area to Receive Drilling	4,619.4							
	Rain Bird XZC-100-PMB-COM	1							
	Value Free Day Control for Commercial Applications, 1" Bell Valve with 1" PDS Valve and 1" Pressure Regulating Valve	1							
V	Area to Receive Drilling	4,619.4							
	Rain Bird XZC-100-PMB-COM	1							
	Value Free Day Control for Commercial Applications, 1" Bell Valve with 1" PDS Valve and 1" Pressure Regulating Valve	1							
W	Area to Receive Drilling	4,619.4							
	Rain Bird XZC-100-PMB-COM	1							
	Value Free Day Control for Commercial Applications, 1" Bell Valve with 1" PDS Valve and 1" Pressure Regulating Valve	1							
X	Area to Receive Drilling	4,619.4							
	Rain Bird XZC-100-PMB-COM	1							
	Value Free Day Control for Commercial Applications, 1" Bell Valve with 1" PDS Valve and 1" Pressure Regulating Valve	1							
Y	Area to Receive Drilling	4,619.4							
	Rain Bird XZC-100-PMB-COM	1							
	Value Free Day Control for Commercial Applications, 1" Bell Valve with 1" PDS Valve and 1" Pressure Regulating Valve	1							
Z	Area to Receive Drilling	4,619.4							
	Rain Bird XZC-100-PMB-COM	1							
	Value Free Day Control for Commercial Applications, 1" Bell Valve with 1" PDS Valve and 1" Pressure Regulating Valve	1							

CONSULTING GABLES INC.
 4437 W FLAGLER ST SUITE #8
 CORAL GABLES, FL 33134
 V:(786)220-0083 F:(866)328-7843
 services@consultinggables.com



DAVID FONTDESIGN
 7551 WILLES ROAD, SUITE 105B
 CORAL GABLES, FL 33134
 TEL: (786) 333-3367
 FAX: (786) 333-3367
 EMAIL: INFO@DAVIDFONTDESIGN.COM

FLAGLER VILLAGE WAREHOUSES
 801-819 NE 2ND AVENUE
 FORT LAUDERDALE, FL 33304

DAVID FONT
 LA 666822

REVISIONS
 SUBMITTAL
 7/30/2019

IR-5