

SECTION No(s).: 86050000 & 8618000
S.R. No.: A1A
PERMIT No: 2019-L-491-00006
COUNTY: BROWARD

**DISTRICT FOUR (4) AMENDMENT NUMBER FOURTEEN (14) TO STATE OF FLORIDA
DEPARTMENT OF TRANSPORTATION LANDSCAPE INCLUSIVE
MEMORANDUM OF AGREEMENT FOR STATE ROAD A1A**

THIS AMENDMENT Number Fourteen (14) to the Agreement dated January 31, 2008, made and entered into this _____ day of _____ 20____ by and between the State of Florida Department of Transportation hereinafter called the DEPARTMENT and the **CITY OF FORT LAUDERDALE**, a municipal corporation of the State of Florida, hereinafter called the AGENCY.

W I T N E S S E T H

WHEREAS, the parties entered into the Landscape Inclusive Maintenance of Agreement dated, January 31, 2008 for the purpose of maintaining the landscape improvements by the AGENCY on State Road A1A; and,

WHEREAS, the DEPARTMENT and the AGENCY have agreed to add additional landscape improvements to be installed by permit on State Road A1A in accordance with the above referenced Agreement; and,

WHEREAS, the AGENCY by Resolution No. _____ dated _____, attached hereto and by this reference made a part hereof, desires to enter into this Agreement and authorized its officers to do so; and,

NOW THEREFORE, for and in consideration of mutual benefits that flow each to the other, the parties covenant and agree as follows:

1. Pursuant to Paragraph Number Thirteen (13) in the Agreement dated January 31, 2008, the AGENCY has agreed to construct additional landscape improvements or to modify an improvement located as indicated in **Exhibit "A"**, State Road A1A (North Ocean Boulevard) from (M.P.2.637) to (M.P.2.441), in accordance with the plans attached as **Exhibit "B"**.
2. The DEPARTMENT shall modify the limits listed in the Agreement dated January 31, 2008, as corrected in **Exhibit "A"**.
3. The AGENCY shall agree to maintain the additional landscape improvements in the Agreement described above in accordance with the Maintenance Plan, **Exhibit "C"** of the original agreement and,

II. SPECIFIC PROJECT SITE MAINTENANCE REQUIREMENTS AND RECOMMENDATIONS:

Palm Maintenance

1. Palm Pruning

- a. Pruning; Must maintain structural integrity. Remove all suckers, dead, diseased or broken branches from trees. All landscape material shall be installed and maintained in a manner whereby traffic control signage, cameras, and devices are visible to motorists and pedestrians at all times.
- b. Remove any broken, damaged or diseased fronds. Cut off any fronds at their bases that hang downward at an angle that is less than 90 degrees.
- c. Inspect all Palms and Trees for pest infestation and disease on a monthly basis, checking for the presence of insects, grubs, mites, fungus, mold, etc. Apply fungicide and pesticides per manufacturer's recommendations for application methods and rates.
- d. Maintain trees and palms upright with stakes/guys. Inspect and adjust stakes and guys to ensure stability and plumb condition of trees and palms. Remove stakes one year after the project is completed.

2. Coconut Removal

- a. Coconuts to be removed as frequently as needed to have fruit free trees.

3. Palm / Tree Fertilization:

- a. Sweep up excess amounts of fertilizers, pesticides and herbicides- never to be hosed into storm drains.

4. Tree Pruning

- a. Monthly tree pruning and dangerous limb removal.

Cast In Place Concrete

1. Power Washing

- a. Remove any spray-paint stains from franchise utility companies, public works, or vandalism.
- b. Any rust stains to be removed.
- c. Power washer to have a minimum rating of 3000psi and flow rate of a minimum 4 gallons per minute. Equipment to be a flat surface cleaner (handheld wands are not acceptable). Contractor to ensure pressure from power washer does not damage the concrete.
- d. Sealer to be applied as needed with a matte finish.

2. Cleaning Concrete

- a. Hose off stains from sea grapes, or around garbage cans, remove gum, etc.

3. Back Pack Blowing

- a. Ensure all pathways and hardscape is clear of debris. Debris to be removed from the site.

Bollards

Maintain bollard surface per manufacture's recommendations. Replace bollards if damaged.

Except as modified by this Amendment, all terms and conditions of the original Agreement and all Amendments thereto shall remain in full force and effect.

LIST OF EXHIBITS

- Exhibit A - Landscape Improvements Maintenance Boundaries
- Exhibit B - Landscape Improvement Plans

CAM #20-0623
Exhibit 1
Page 4 of 53

SECTION No(s): 86050000 & 8618000
S.R. No.: A1A
PERMIT No: 2019-L-491-00006
COUNTY: BROWARD

EXHIBIT A

LANDSCAPE IMPROVEMENTS MAINTENANCE BOUNDARIES

I. PERMIT PROJECT LANDSCAPE MAINTENANCE LIMITS:

State Road A1A Section 86180000 from M.P.2.637 (Seabreeze Boulevard) to M.P. 2.964 (Las Olas Boulevard) and
State Road A1A Section 86050000 from M.P. 2.042 (Las Olas Boulevard) to M.P.2.441 (Alhambra Street)

II. INCLUSIVE LANDSCAPE MAINTENANCE AGREEMENT LIMITS FOR STATE ROAD A1A FROM:

State Road 5 (US 1) M.P. 0.000 (Section 86180000)
(US 1) to Flamingo Avenue (M.P. 6.410) (Section 86050000)

By Individual Sections:

Southbound One Way (Section 86050100)
M.P. 0.0000 (Seville Street) to M.P. 0.926 (Bahia Mar Hotel Entrance)

Northbound One Way / Seabreeze Boulevard / 17th Street Causeway (Section 86180000):

M.P. 0.000 (State Road 5) (US 1) to M.P. 2.964 (State Road 842) (Las Olas Boulevard)

North Fort Lauderdale Beach Area (Section 86050000):

M.P. 2.039 (south of Las Olas Boulevard) to M.P. 6.410 (Flamingo Avenue)

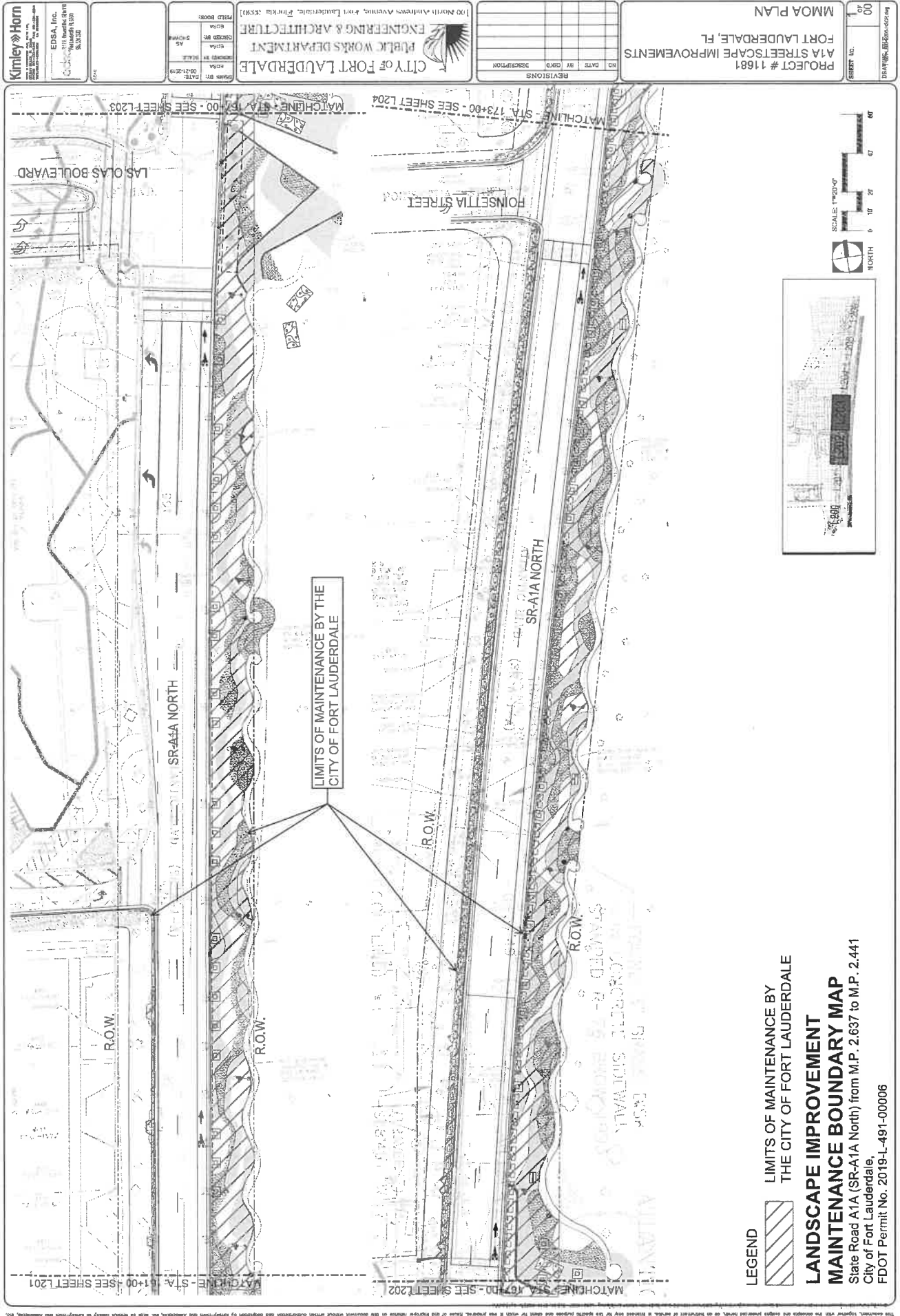
III. PERMIT PROJECT LANDSCAPE MAINTENANCE BOUNDARY LIMITS MAP:

***All limits of the original agreement and amendments shall apply**

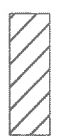
Please See Attached

5. The undersigned Developer Design Engineer Design Landowner and the undersigned Permittee to the City of
LAUDERDALE INCLUDING IT UNDERPART OF AN AMENDMENT to the original PERMIT INCLUSIVE AMENDMENT 14, to the City of
LAUDERDALE, FLORIDA





LEGEND

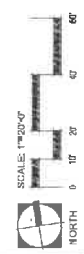


LIMITS OF MAINTENANCE BY
THE CITY OF FORT LAUDERDALE

LANDSCAPE IMPROVEMENT

MAINTENANCE BOUNDARY MAP

State Road A1A (SR-A1A North) from M.P. 2.637 to M.P. 2.441
City of Fort Lauderdale,
FDOT Permit No. 2019-L-491-00006



PROJECT # 11681
A1A STREETSCAPE IMPROVEMENTS
FORT LAUDERDALE, FL
MMOA PLAN

NO.	DATE	BY	DESCRIPTION

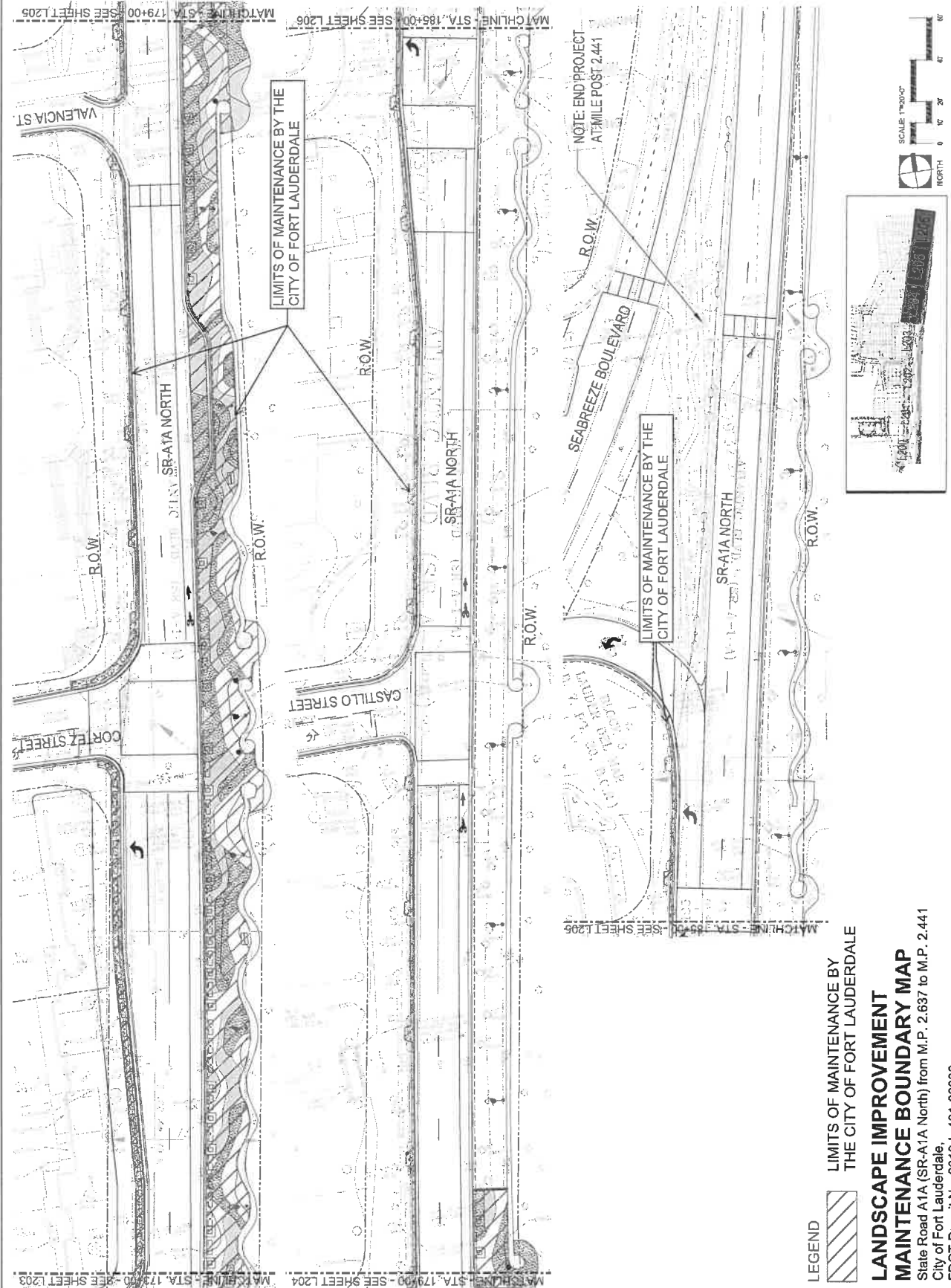
CITY OF FORT LAUDERDALE
PUBLIC WORKS DEPARTMENT
ENGINEERING & ARCHITECTURE
100 North Andrews Avenue, Fort Lauderdale, Florida 33301

DESIGNED BY	DATE
CHECKED BY	DATE
APPROVED BY	DATE

FIELD BOOK	DATE
AS	DATE

Kinley Horn
EDSA, Inc.
11111 Sunrise Blvd
Suite 100
Fort Lauderdale, FL 33322

This document, together with the associated design information, is prepared for the specific purpose and shall not be used for any other purpose without the written consent of the engineer. It is the responsibility of the user to ensure that the design is used for the intended purpose and that it is not used for any other purpose without the written consent of the engineer. The user shall be responsible for obtaining all necessary permits and approvals for the use of this document.



SECTION No(s): 86050000 & 8618000
S.R. No.: A1A
PERMIT No: 2019-L-491-00006
COUNTY: BROWARD

EXHIBIT B

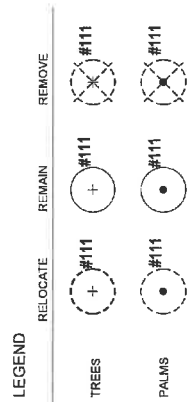
LANDSCAPE IMPROVEMENT PLANS

The AGENCY agrees to install the landscape improvements in accordance with the plans and specifications attached hereto and incorporated herein.

Please see attached plans prepared by: Paul David Kissinger, RLA
EDSA, Inc.
Sheets – L - 000
L - 100 – 108
L - 200 - 211
L - 500 – 511
Date: September 16, 2019

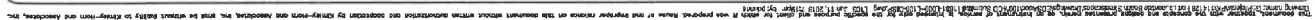
And

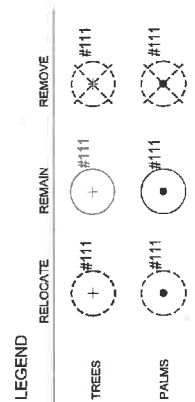
Stephen M. Feccia, PLA
Kimley Horn
Sheets - L - 600 - 609
Date: September 16, 2019



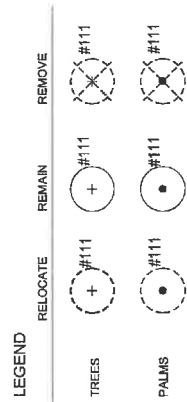
CAM #20-0623
Exhibit 1
Page 11 of 53







CAM #20-0623
Exhibit 1
Page 15 of 53



NORTH 0 10 20 30
FDOT PERMIT NUMBER: 2019-L-491-00006

FDOT PERMIT NUMBER: 2019-L-491-00006

SHEET NO. 1 of 2
DRAWING FILE
17681-107-015P-SCHIEBING

PROJECT # 11681
A1A STREETSCAPE IMPROVEMENTS
FORT LAUDERDALE, FL
TREE DISPOSITION SCHEDULE

[illegible]

CITY OF FORT LAUDERDALE
PUBLIC WORKS DEPARTMENT
ENGINEERING & ARCHITECTURE
Andrews Avenue, Fort Lauderdale, Florida 33301

FIELD BOOK	
SCALE: AS SHOWN	EDSA CORRECT BY:
	EDSA RECORDED BY:
DATE: 9.18.2019	EDSA DRAWN BY:



603 S. 15th E. Second St., Suite 150
 Fort Lauderdale, FL 33301
 954-534-3300

Kimley»Horn
INSTRUMENTS & COMMERCIAL SUPPLY, INC.
10000 BLANCH ST., SUITE 100
POMEROY, OH 43081-2048 FAX 614-338-0148
WWW.KIMLEY-HORN.COM CA 00000000

EDSA, Inc.

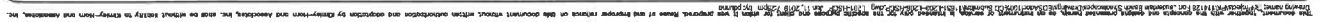
[illegible]

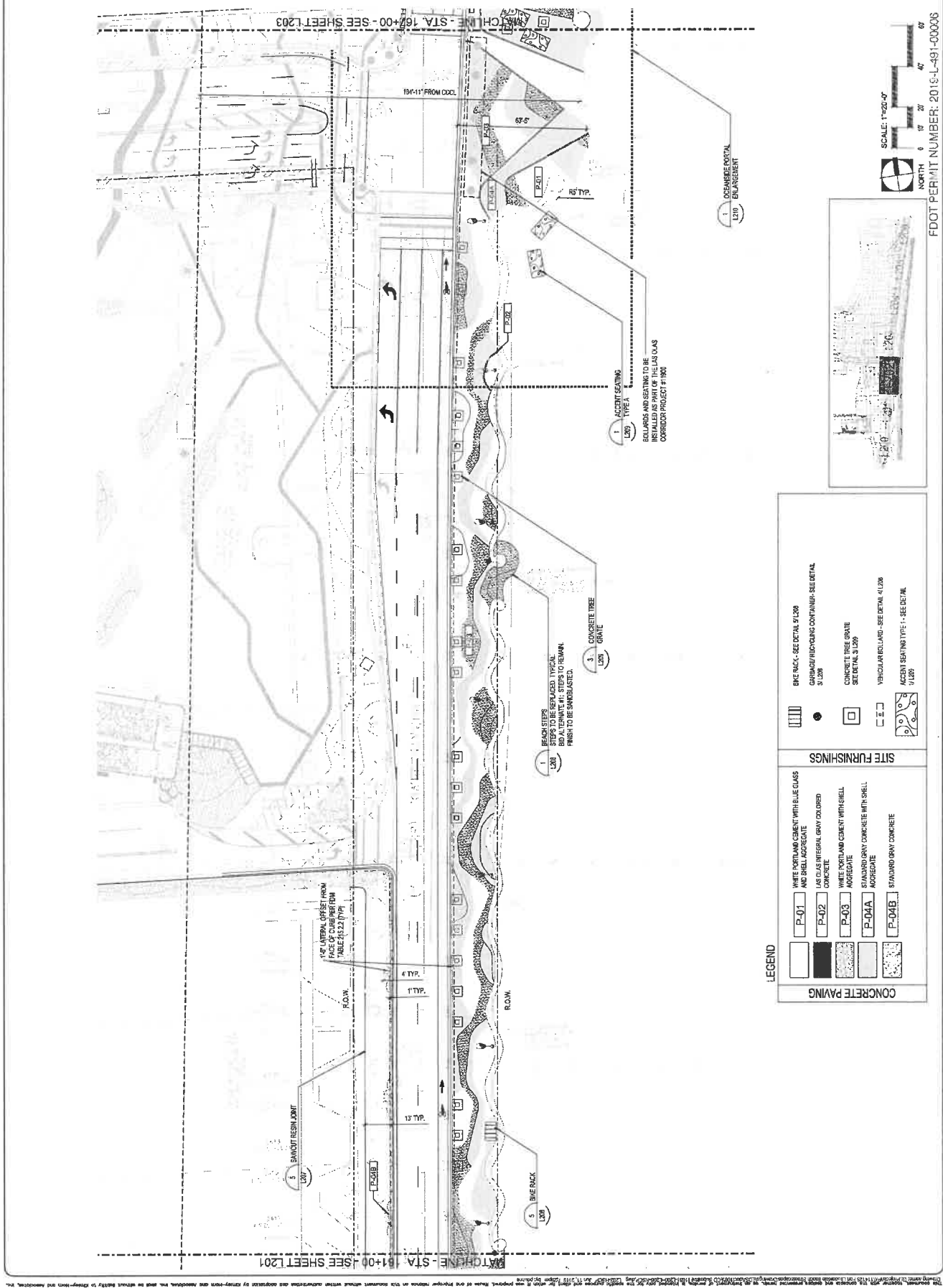
TREE TABLE	
TOTAL EXISTING TREES	7
TOTAL EXISTING PALMS	460
TREES TO REMAIN	2
PALMS TO REMAIN	371
TREES TO BE RELOCATED	0
PALMS TO BE RELOCATED	0
TREES TO BE REMOVED	0

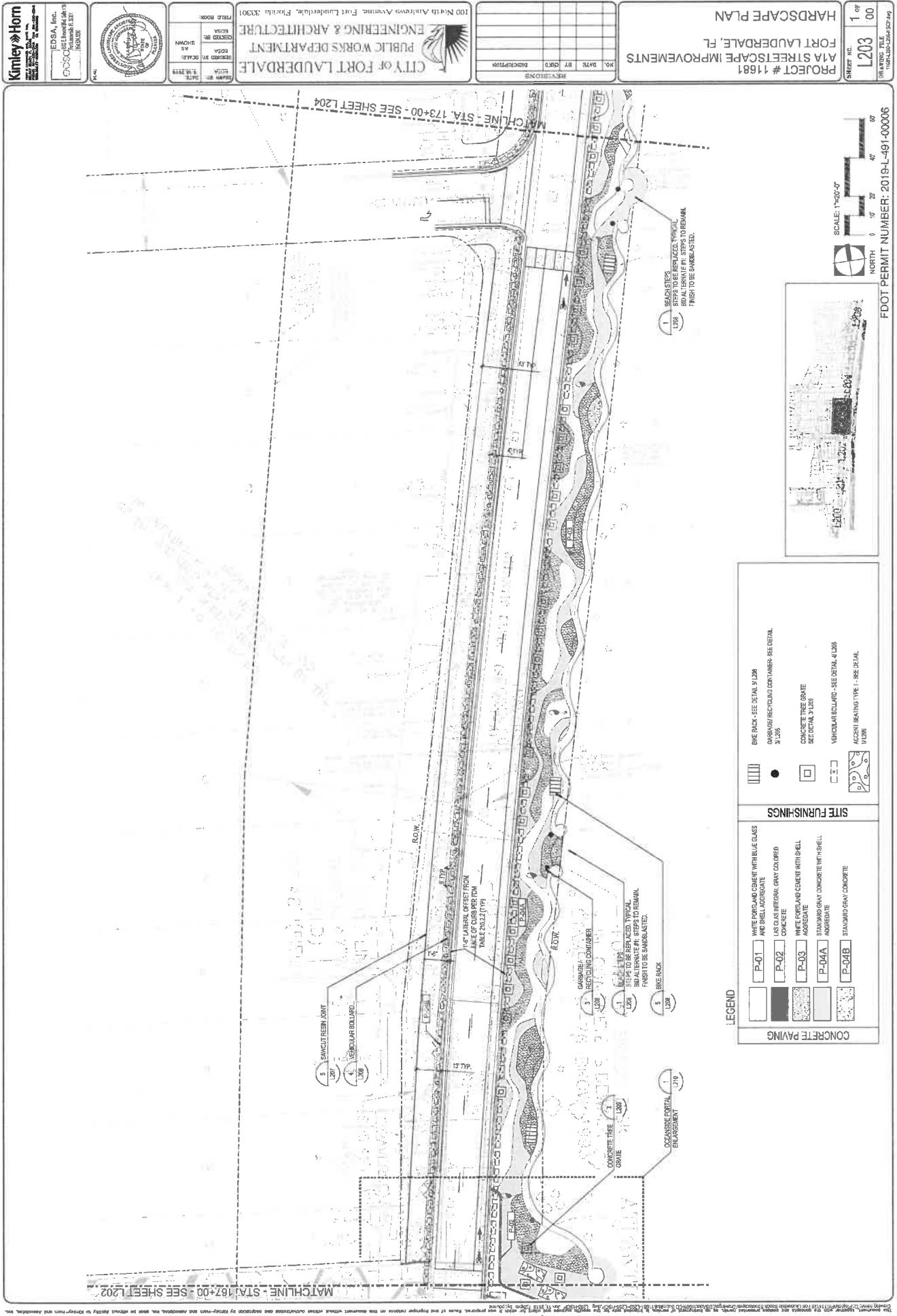
PALMS TO BE REMOVED	79
TREES TO BE PLANTED	0
PALMS TO BE PLANTED	85

PERMIT NUMBER: 2019-L-491-0200









PROJECT # 11681
 A1A STREETSCAPE IMPROVEMENTS
 FORT LAUDERDALE, FL
 HARDSCAPE PLAN

SHEET NO. 1 OF 00
 L203
 IN WRITING FILE
 10/18/2019

CITY OF FORT LAUDERDALE
 PUBLIC WORKS DEPARTMENT
 ENGINEERING & ARCHITECTURE
 100 North Andrews Avenue, Fort Lauderdale, Florida 33301

EDSA, Inc.
 1021 Southwest 1st St.
 Fort Lauderdale, FL 33301
 PHONE: 954.575.1234
 FAX: 954.575.1235
 WWW.EDSA-FL.COM



DESIGNED BY: EDSA
 CHECKED BY: EDSA
 IN CHARGE: EDSA
 DATE: 9/18/2019

FIELD BOOK:
 SHEET NO. 1 OF 00
 MATCH LINE - STA. 173+00 - SEE SHEET L204

CONCRETE PAVING

- P-01 WHITE PORTLAND CEMENT WITH BLUE GLASS AND SHELL AGGREGATE
- P-02 1/2" CLASS INTERIOR GRAY COLORED CONCRETE
- P-03 WHITE PORTLAND CEMENT WITH SHELL AGGREGATE
- P-04A 1/2" CLASS INTERIOR GRAY COLORED CONCRETE WITH SHELL AGGREGATE
- P-04B STANDARD GRAY CONCRETE

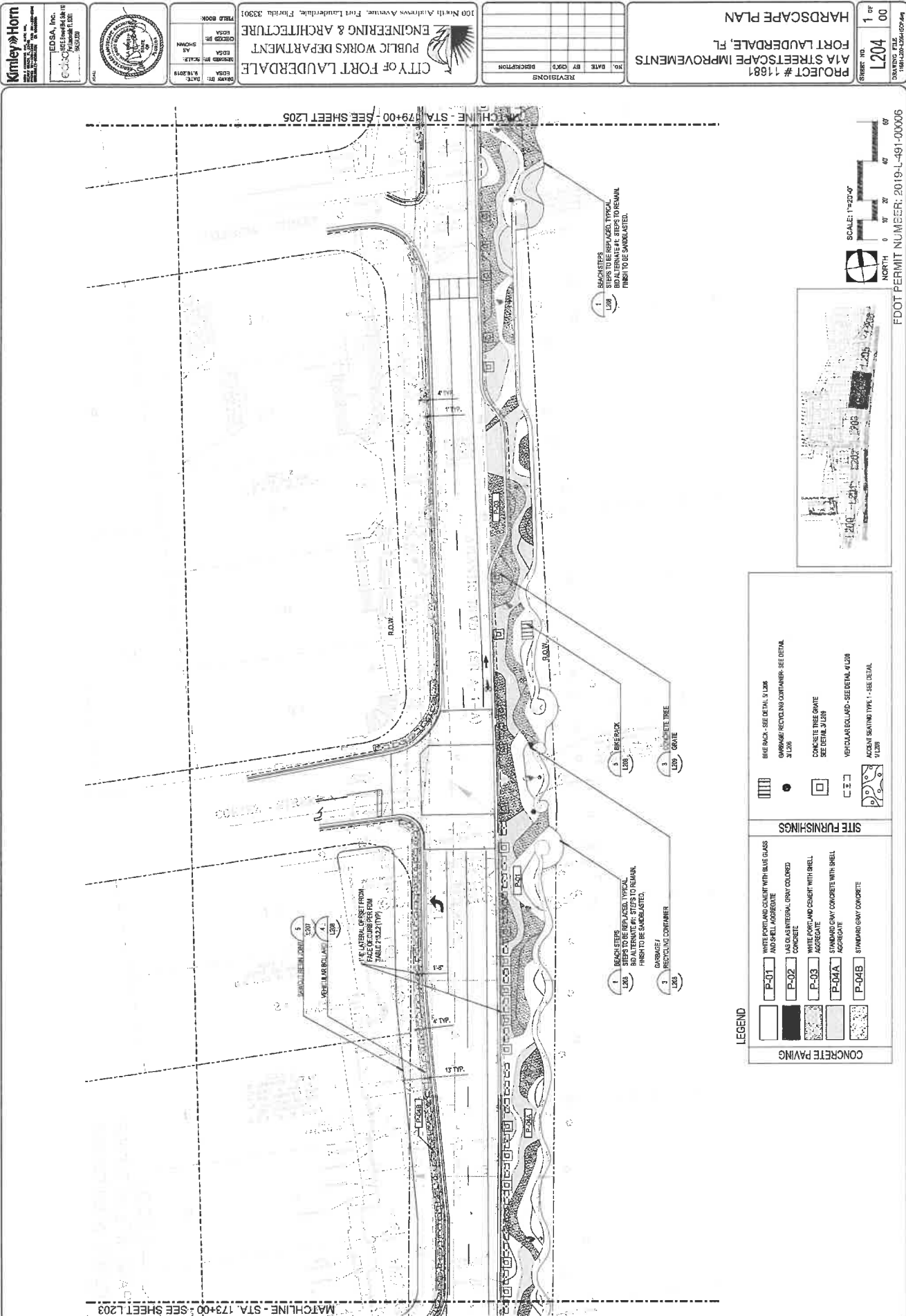
SITE FURNISHINGS

- BENCH - SEE DETAIL 9/ L206
- GARBAGE/RECYCLING CONTAINER - SEE DETAIL 9/ L206
- CONCRETE TREE GRATE - SEE DETAIL 3/ L203
- VEHICULAR BOLLARD - SEE DETAIL 4/ L206
- ACCENT SEATING TYPE 1 - SEE DETAIL 1/ L206



SCALE: 1"=20'-0"
 NORTH
 0 10 20 30 40 50 60
 FEET
 FDOT PERMIT NUMBER: 2019-L-491-000006

This document is prepared by EDSA, Inc. for the City of Fort Lauderdale. It is not to be used for any other project without the written consent of EDSA, Inc. and the City of Fort Lauderdale. The City of Fort Lauderdale is not responsible for the accuracy or completeness of the information provided in this document. The City of Fort Lauderdale is not responsible for the accuracy or completeness of the information provided in this document. The City of Fort Lauderdale is not responsible for the accuracy or completeness of the information provided in this document.



FOOT PERMIT NUMBER: 2019-L-491-000006



CONCRETE PAVING	
P-01	WHITE CONCRETE AND COUNTER WITH BLUE GLASS
P-02	DARK GRAY INTEGRAL CONCRETE
P-03	WHITE CONCRETE AND COUNTER WITH SHELL AGGREGATE
P-04A	STANDARD GRAY CONCRETE WITH SHELL AGGREGATE
P-04B	STANDARD GRAY CONCRETE
P-04C	STANDARD GRAY CONCRETE
SITE FURNISHINGS	
1	CONCRETE TREE
2	CONCRETE TREE
3	CONCRETE TREE
4	CONCRETE TREE
5	CONCRETE TREE
6	CONCRETE TREE
7	CONCRETE TREE
8	CONCRETE TREE
9	CONCRETE TREE
10	CONCRETE TREE
11	CONCRETE TREE
12	CONCRETE TREE
13	CONCRETE TREE
14	CONCRETE TREE
15	CONCRETE TREE
16	CONCRETE TREE
17	CONCRETE TREE
18	CONCRETE TREE
19	CONCRETE TREE
20	CONCRETE TREE
21	CONCRETE TREE
22	CONCRETE TREE
23	CONCRETE TREE
24	CONCRETE TREE
25	CONCRETE TREE
26	CONCRETE TREE
27	CONCRETE TREE
28	CONCRETE TREE
29	CONCRETE TREE
30	CONCRETE TREE
31	CONCRETE TREE
32	CONCRETE TREE
33	CONCRETE TREE
34	CONCRETE TREE
35	CONCRETE TREE
36	CONCRETE TREE
37	CONCRETE TREE
38	CONCRETE TREE
39	CONCRETE TREE
40	CONCRETE TREE
41	CONCRETE TREE
42	CONCRETE TREE
43	CONCRETE TREE
44	CONCRETE TREE
45	CONCRETE TREE
46	CONCRETE TREE
47	CONCRETE TREE
48	CONCRETE TREE
49	CONCRETE TREE
50	CONCRETE TREE
51	CONCRETE TREE
52	CONCRETE TREE
53	CONCRETE TREE
54	CONCRETE TREE
55	CONCRETE TREE
56	CONCRETE TREE
57	CONCRETE TREE
58	CONCRETE TREE
59	CONCRETE TREE
60	CONCRETE TREE
61	CONCRETE TREE
62	CONCRETE TREE
63	CONCRETE TREE
64	CONCRETE TREE
65	CONCRETE TREE
66	CONCRETE TREE
67	CONCRETE TREE
68	CONCRETE TREE
69	CONCRETE TREE
70	CONCRETE TREE
71	CONCRETE TREE
72	CONCRETE TREE
73	CONCRETE TREE
74	CONCRETE TREE
75	CONCRETE TREE
76	CONCRETE TREE
77	CONCRETE TREE
78	CONCRETE TREE
79	CONCRETE TREE
80	CONCRETE TREE
81	CONCRETE TREE
82	CONCRETE TREE
83	CONCRETE TREE
84	CONCRETE TREE
85	CONCRETE TREE
86	CONCRETE TREE
87	CONCRETE TREE
88	CONCRETE TREE
89	CONCRETE TREE
90	CONCRETE TREE
91	CONCRETE TREE
92	CONCRETE TREE
93	CONCRETE TREE
94	CONCRETE TREE
95	CONCRETE TREE
96	CONCRETE TREE
97	CONCRETE TREE
98	CONCRETE TREE
99	CONCRETE TREE
100	CONCRETE TREE

PROJECT # 11681
AIA STREETSCAPE IMPROVEMENTS
FORT LAUDERDALE, FL
HARDSCAPE PLAN

REVISIONS

NO.	DATE	BY	CHK'D	DESCRIPTION

CITY OF FORT LAUDERDALE
PUBLIC WORKS DEPARTMENT
ENGINEERING & ARCHITECTURE
100 North Andrews Avenue, Fort Lauderdale, Florida 33301

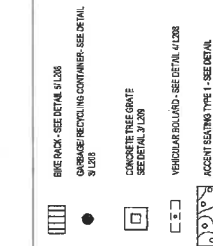
DESIGN BY: EDSA, Inc.
CHECKED BY: EDSA, Inc.
SCALE: AS SHOWN
DATE: 1/16/2019
TITLE: BOOK

Kimley-Horn
100 North Andrews Avenue, Fort Lauderdale, Florida 33301
Tel: 954.473.1100
Fax: 954.473.1101
www.kimley-horn.com

EDSA, Inc.
100 North Andrews Avenue, Fort Lauderdale, Florida 33301
Tel: 954.473.1100
Fax: 954.473.1101
www.edsa.com

1 of 1
L204
DRAWING FILE
11681-L204-L204.dwg





CONCRETE PAVING

SITE FURNISHINGS

P-01	WHITE PORTLAND CEMENT WITH BLUE GLASS AND SHELL AGGREGATE
P-02	LAS OLAS INTERMIX GRAY COLORED CONCRETE
P-03	WHITE PORTLAND CEMENT WITH SHELL AGGREGATE
P-04A	STANDARD GRAY CONCRETE WITH SHELL AGGREGATE
P-04B	STANDARD GRAY CONCRETE

BENCH RACK - SEE DETAIL 5/1208
 CONCRETE TREE GRATE
 - SEE DETAIL 3/1209
 VEHICULAR BOLLARD - SEE DETAIL 4/1208
 ACCENT SEATING TYPE 1 - SEE DETAIL

Map of the study area showing the location of the study site (indicated by a black dot) relative to the city of New York. The map includes a scale bar (0 to 60 miles) and a north arrow.

FDOT PERMIT NUMBER: 2019-L-491-00006

REVISIONS

NO.	DATE	BY	CHK'D	DESCRIPTION
REVISIONS				

CITY OF FORT LAUDERDALE
PUBLIC WORKS DEPARTMENT
ENGINEERING & ARCHITECTURE
100 North Andrews Avenue, Fort Lauderdale, Florida 33301

EDSA	SEARCHED BY:	EDSA	INDEXED BY:	VSOA	FILED IN:
9/16/2019	SCALE:	AS	SHOWN		



EDSA, Inc.

Kimley»Horn

This document, including all drawings, is the property of the City of Fort Lauderdale. It is to be used for the project and site only. It is not to be reproduced, stored in a retrieval system, or transmitted in any form or by any means, electronic, mechanical, photocopying, recording, or by any information storage and retrieval system, without the prior written permission of the City of Fort Lauderdale. The City of Fort Lauderdale is not responsible for any errors or omissions in this document. The user of this document assumes all liability for any and all consequences of its use.

Kimley-Horn

100 North Andrews Avenue, Fort Lauderdale, Florida 33301

EDSA, Inc.

100 North Andrews Avenue, Fort Lauderdale, Florida 33301

CITY OF FORT LAUDERDALE

PUBLIC WORKS DEPARTMENT

ENGINEERING & ARCHITECTURE

100 North Andrews Avenue, Fort Lauderdale, Florida 33301

REVISIONS

NO.	DATE	BY	CHK'D	DESCRIPTION

PROJECT # 11681

A1A STREETSCAPE IMPROVEMENTS

FORT LAUDERDALE, FL

HARDSCAPE DETAILS

PROJECT NO. **L207**

REVISION NO. **1 OF 00**

DATE: 01/11/2019

BY: JH

CHK'D: JH

DESCRIPTION: HARDSCAPE DETAILS

PROJECT NO. **L207**

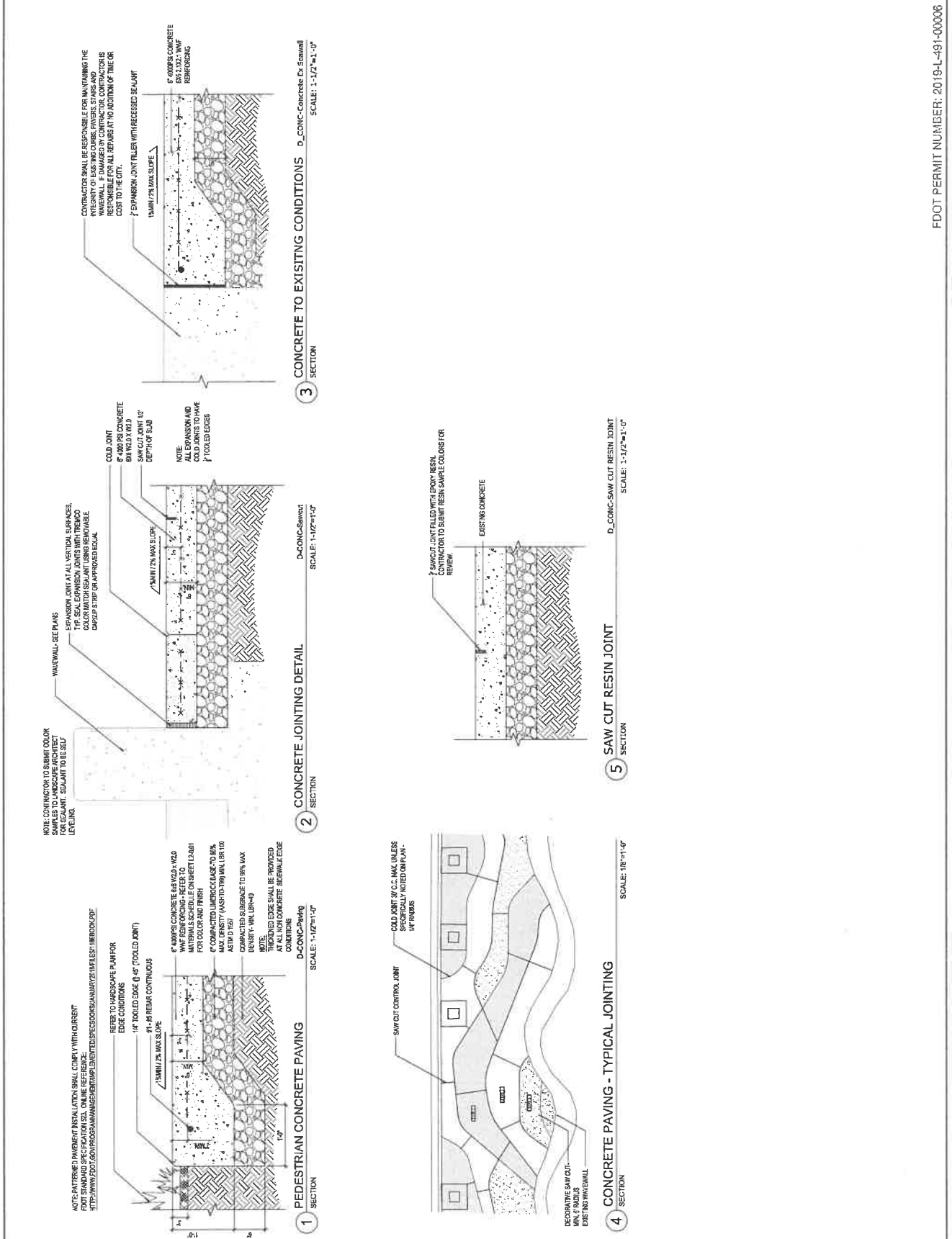
REVISION NO. **1 OF 00**

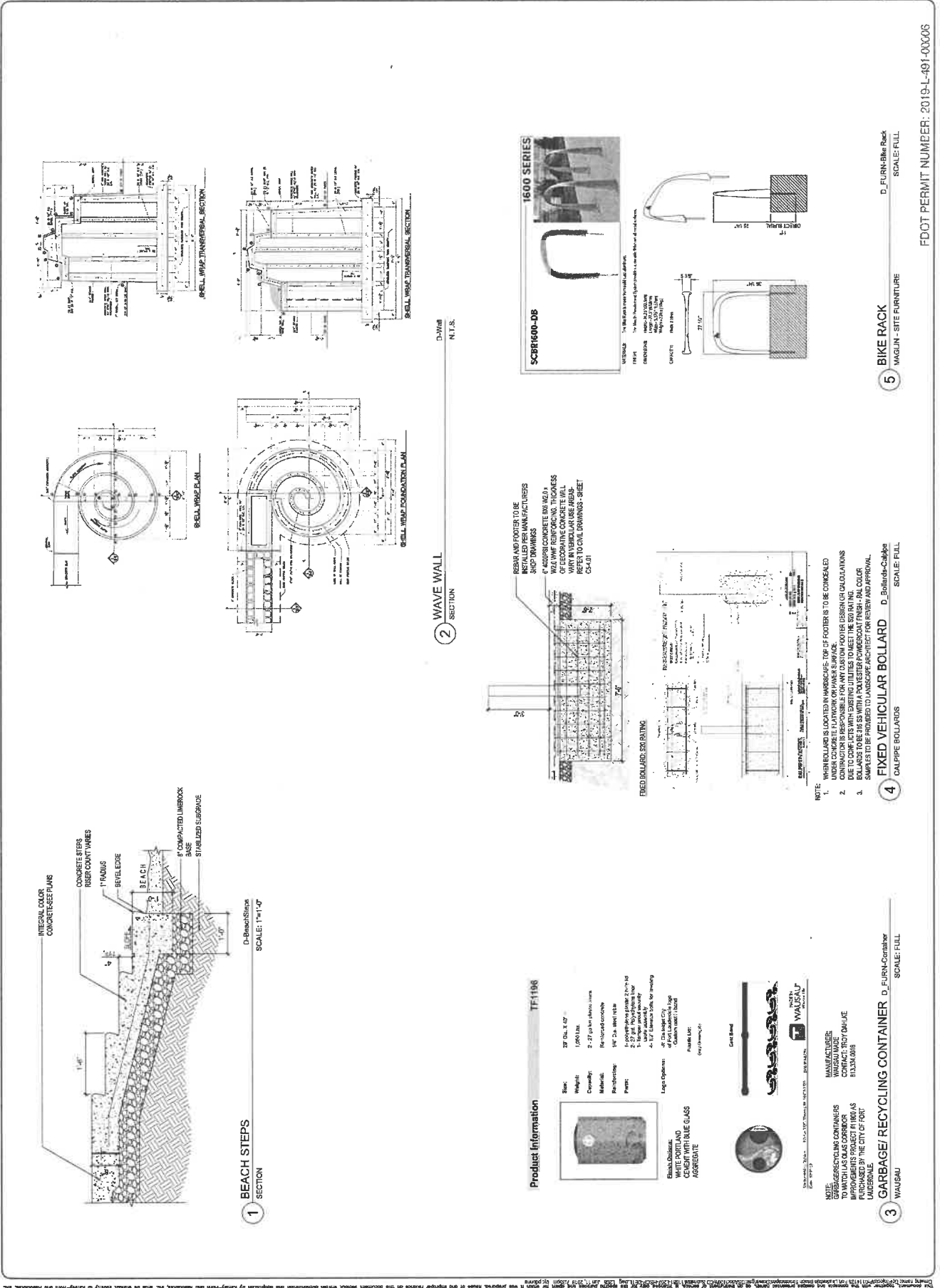
DATE: 01/11/2019

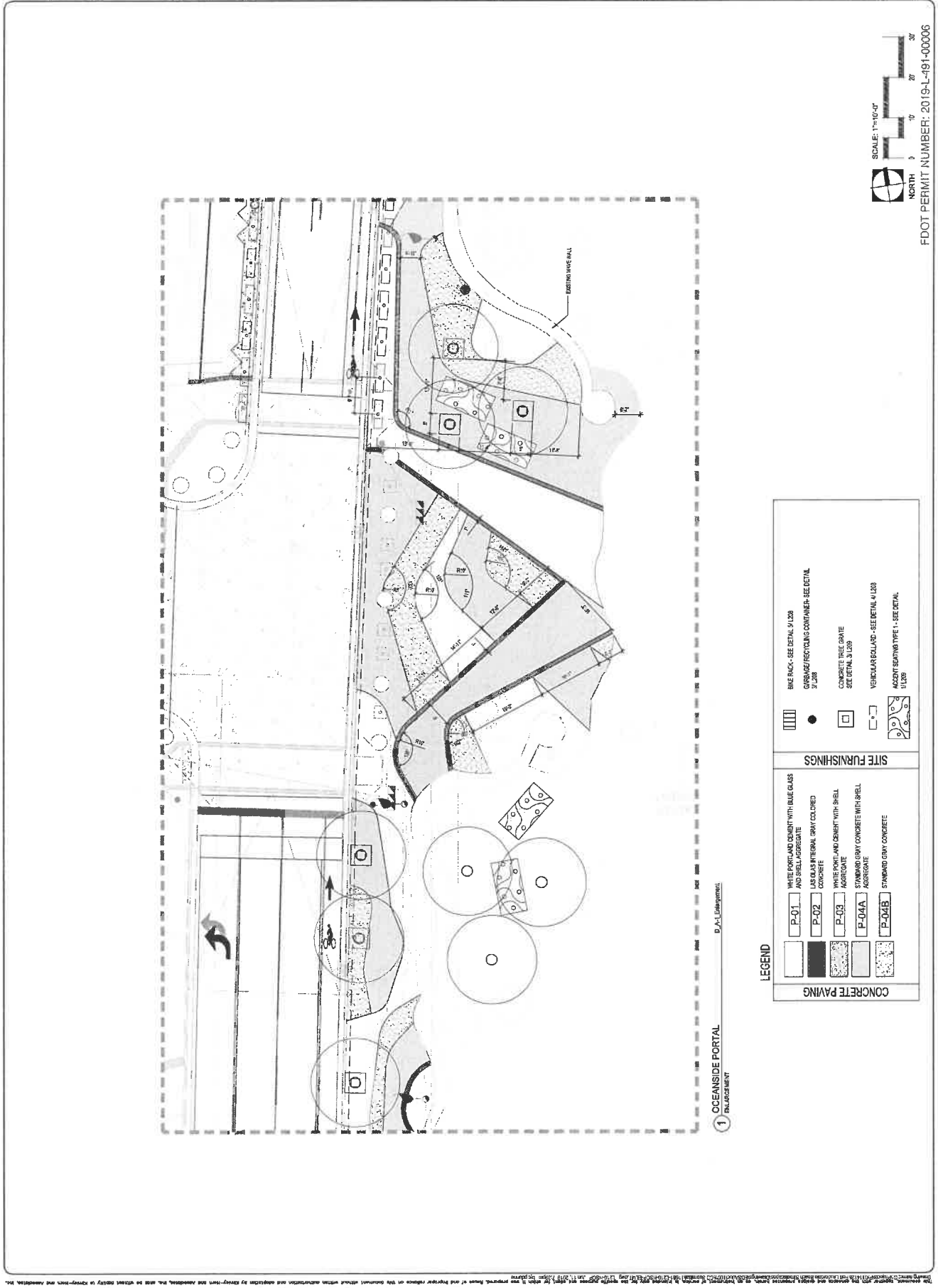
BY: JH

CHK'D: JH

DESCRIPTION: HARDSCAPE DETAILS







NO.	DATE	BY	CHKD	DESCRIPTION

PROJECT # 11681
PATA STREETSCAPE IMPROVEMENTS
FORT LAUDERDALE, FL
HARDSCAPE SCHEDULE

SHEET NO. 1 of 00
L211
DRAWING FILE
11621-117 QRS-SCHE Dec

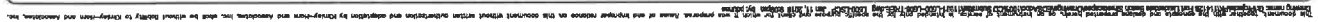
CITY OF FORT LAUDERDALE
PUBLIC WORKS DEPARTMENT
ENGINEERING & ARCHITECTURE
3301 North Andrews Avenue, Fort Lauderdale, Florida 33301

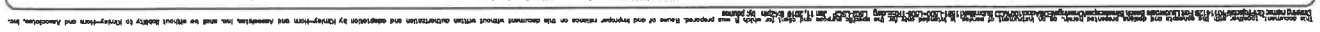
EDSA, Inc.
1012 E. Broad St., Suite 170
Fort Lauderdale, FL 33301

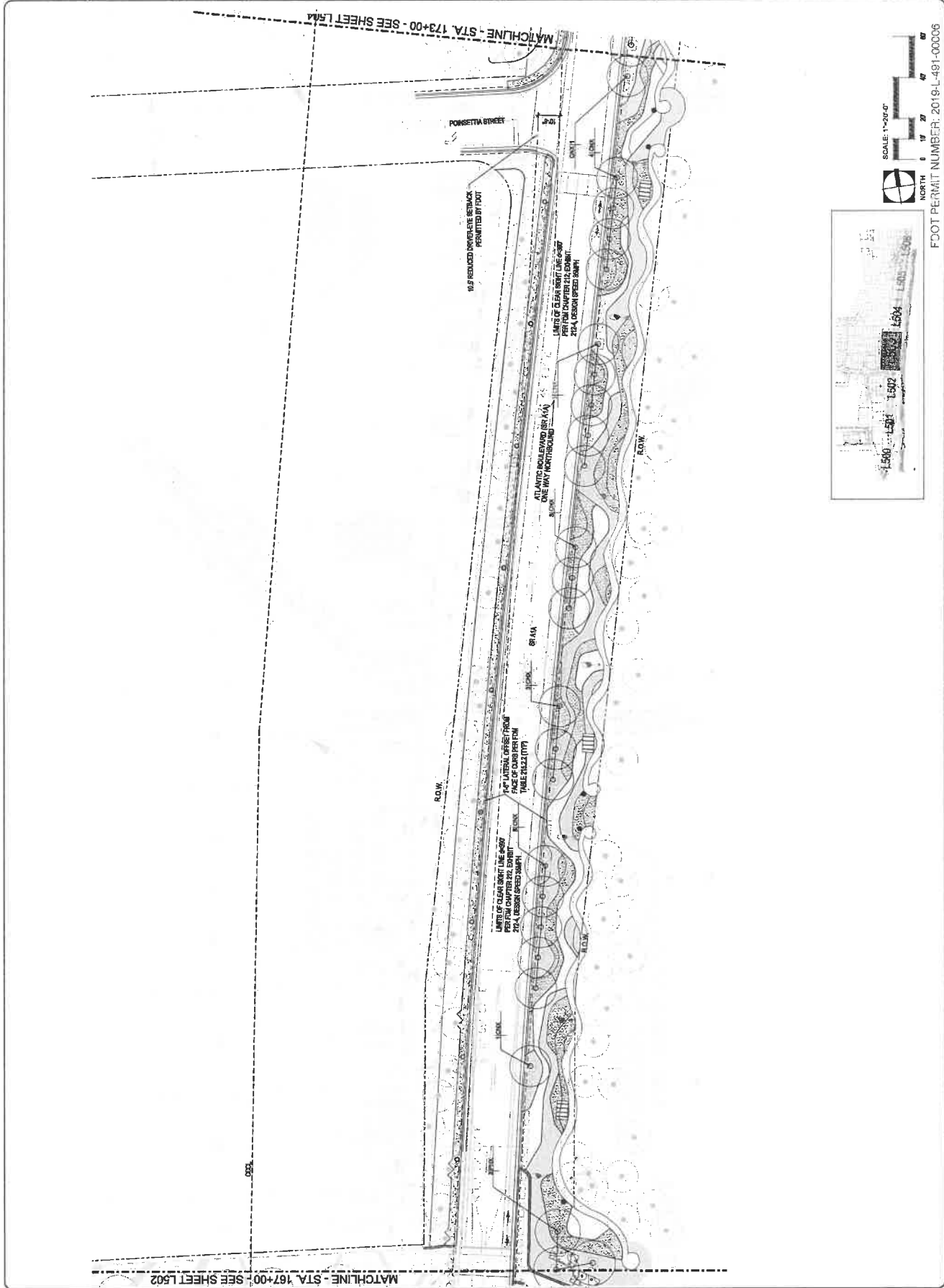
Kimley»Horn

MATERIAL SCHEDULE

[illegible]







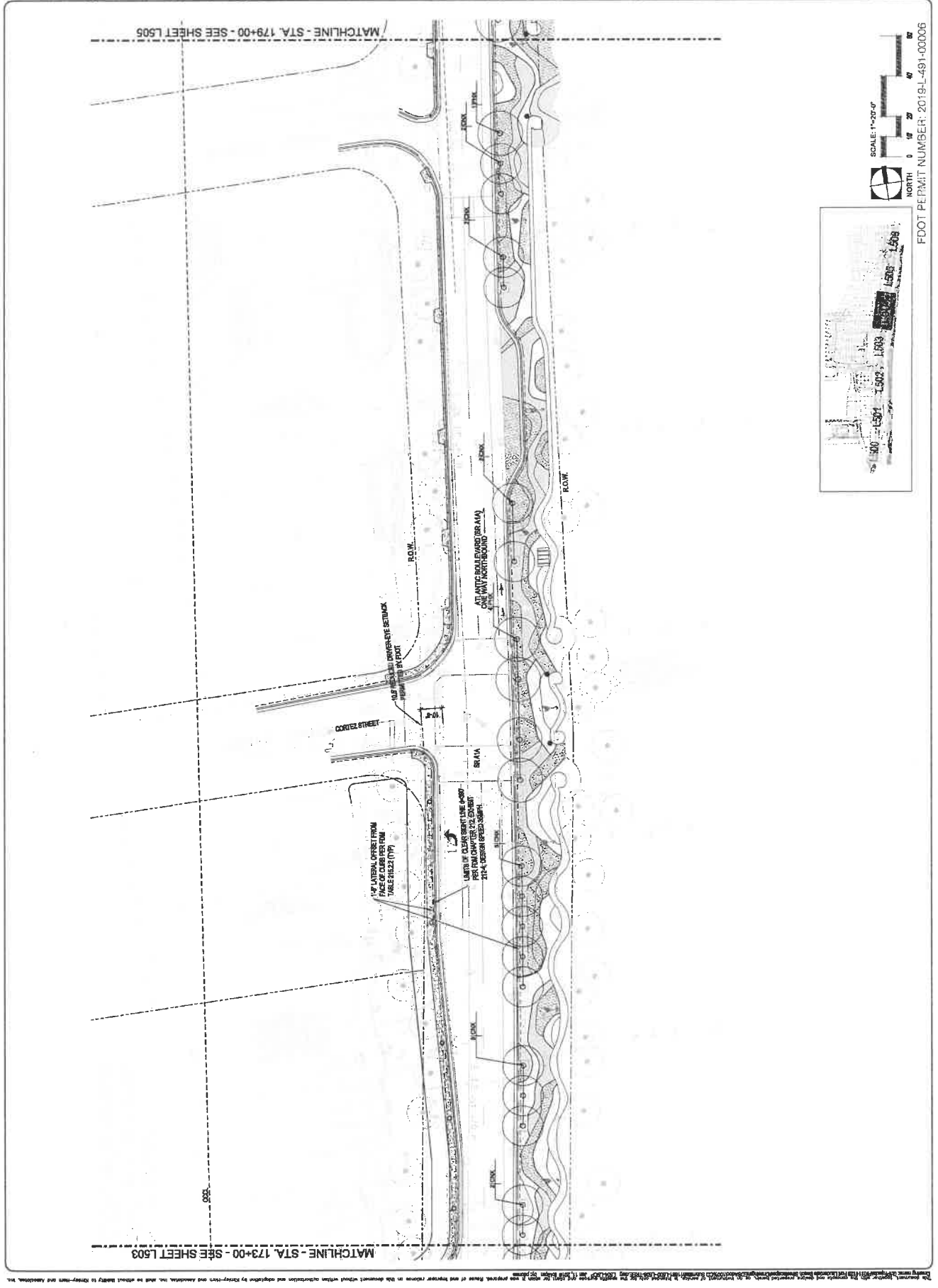
CITY OF FORT LAUDERDALE
PUBLIC WORKS DEPARTMENT
ENGINEERING & ARCHITECTURE
100 North Andrews Avenue, Fort Lauderdale, Florida 33301

PROJECT # 11681
A1A STREETSCAPE IMPROVEMENTS
FORT LAUDERDALE, FL
LANDSCAPE PLAN

FIELD BOOK

DATE	BY	CHKD	DESCRIPTION

SHEET NO. **1** OF **00**
L504
DRAWING FILE
11681-L-001-00006





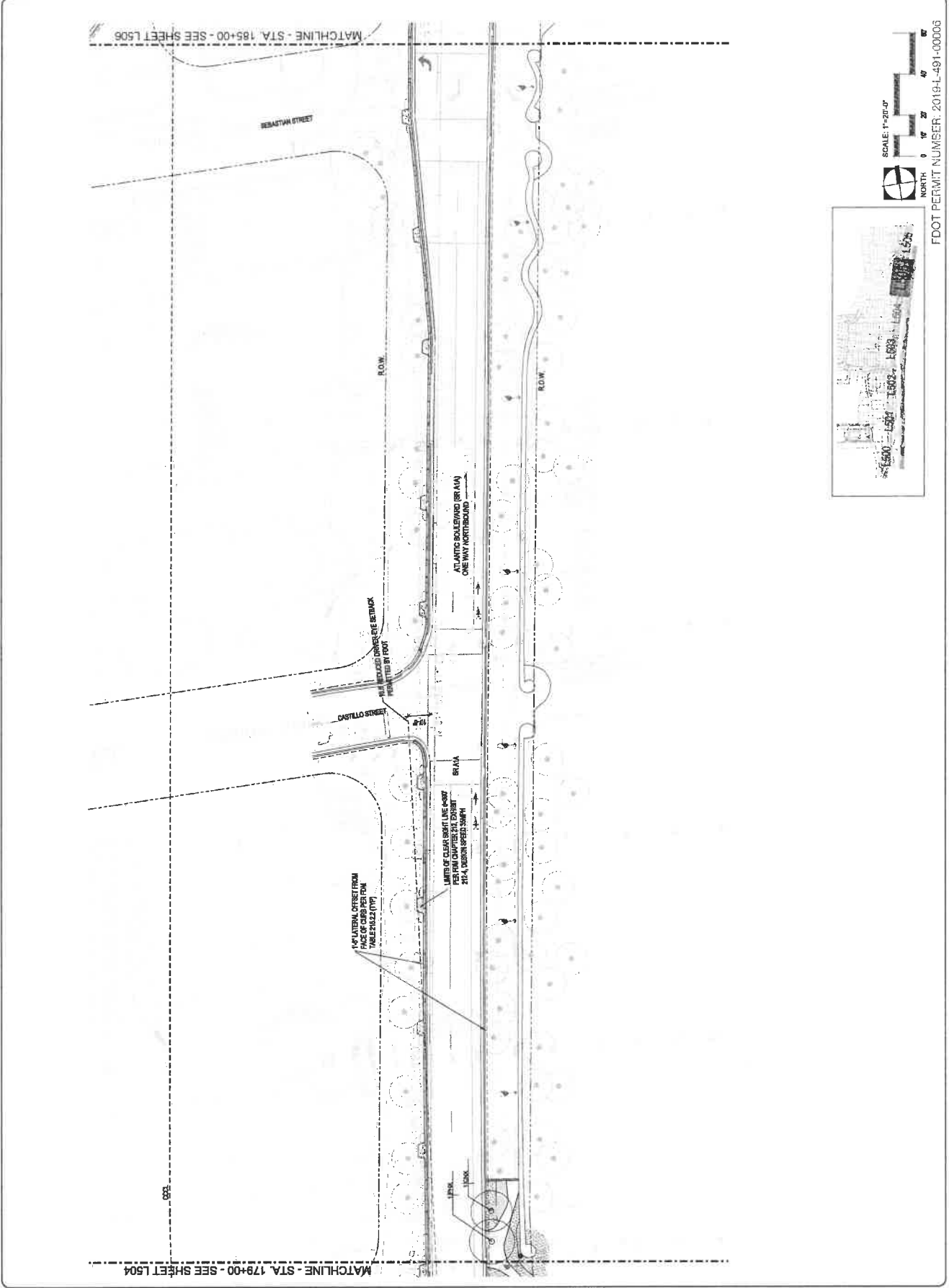
Kimley-Horn
INCORPORATED
100 North Andrews Avenue, Fort Lauderdale, Florida 33301

CITY OF FORT LAUDERDALE
PUBLIC WORKS DEPARTMENT
ENGINEERING & ARCHITECTURE
100 North Andrews Avenue, Fort Lauderdale, Florida 33301

PROJECT # 11681
A1A STREETSCAPE IMPROVEMENTS
FORT LAUDERDALE, FL
LANDSCAPE PLAN

SHEET NO. **L505**
1 of 00
DRAWING FILE: 2019-L-491-00006

NO.	DATE	BY	CHKD.	DESCRIPTION



This document, including all the drawings and specifications, is the property of Kimley-Horn and Associates, Inc. It is to be used only for the project and location for which it was prepared. No part of this document is to be reproduced or transmitted in any form or by any means electronic or mechanical, including photocopying, recording, or by any information storage and retrieval system, without written authorization and signature by Kimley-Horn and Associates, Inc. The user of this document shall be responsible for obtaining all necessary permits and approvals from the appropriate authorities. Kimley-Horn and Associates, Inc. shall be held harmless for any and all claims, damages, losses, and expenses, including reasonable attorneys' fees, arising out of or from the use of this document by any third party.

EDSA, Inc.
100 North Andrews Avenue, Fort Lauderdale, Florida 33301
100 North Andrews Avenue, Fort Lauderdale, Florida 33301

PROJECT # 11681
A1A STREETSCAPE IMPROVEMENTS
FORT LAUDERDALE, FL

REVISIONS

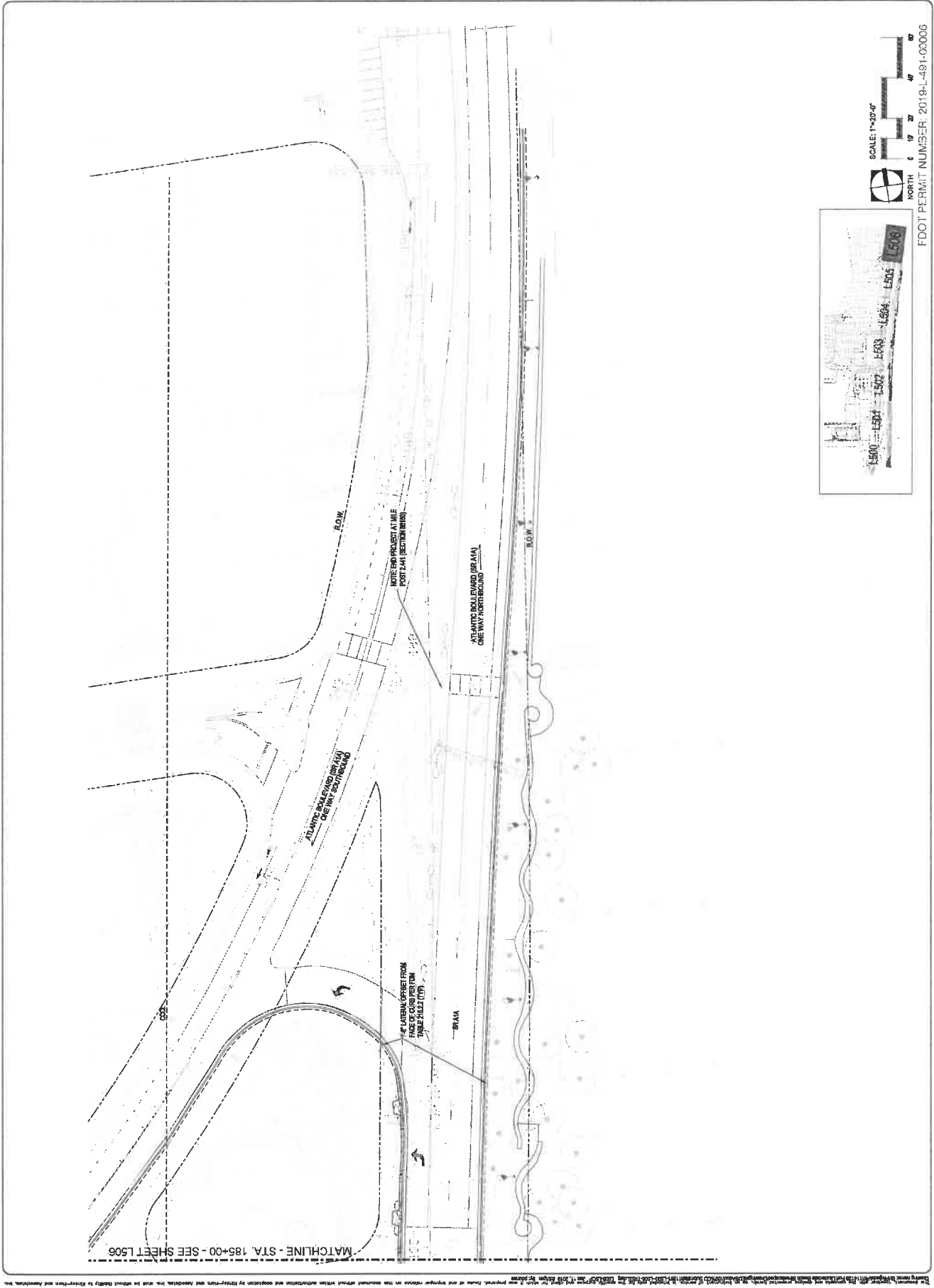
NO.	DATE	BY	CHKD	DESCRIPTION

CITY OF FORT LAUDERDALE
PUBLIC WORKS DEPARTMENT
ENGINEERING & ARCHITECTURE

FIELD BOOK

PAGE	DATE	EDSA	SCALE	AS SHOWN

SHEET NO. 1 OF 00
DRAWING FILE L506
1001460-145-00006



Kimley-Horn, Inc. and its affiliates shall not be held responsible for any errors or omissions in this drawing. The user of this drawing shall be responsible for any errors or omissions in this drawing. The user of this drawing shall be responsible for any errors or omissions in this drawing.



1. WHERE NOT CONFLICTING WITH THE FOOTBALL OF PROPOSED LANDSCAPE MATERIAL, COMPACTOR SHALL PRESERVE A CONTINUOUS BAND OF UNDISTURBED COMPACTED SUB-SOIL FROM THE BACK OF CURB.
2. COMPACTOR SHALL INSURE THAT ALL UNSUITABLE SOIL INCLUDING CONCRETE, PAVERMENT, ROAD BASE, STONES OVER 2" DIAMETER AND ALL CONSTRUCTION DEBRIS, IS REMOVED FROM THE AREA TO BE PLANTED AND REPLACED WITH SPECIFIED PLANTING SOIL.
3. PLANTING PITS FOR PALMS: REMOVE COMPACTED SOIL WITHIN EACH AREA OF EACH PLANTING PIT TO A DEPTH OF 4" MIN FROM TOP OF CURB.



PROJECT # 11681
A1A STREETSCAPE IMPROVEMENTS
FORT LAUDERDALE, FL
LANDSCAPE DETAILS

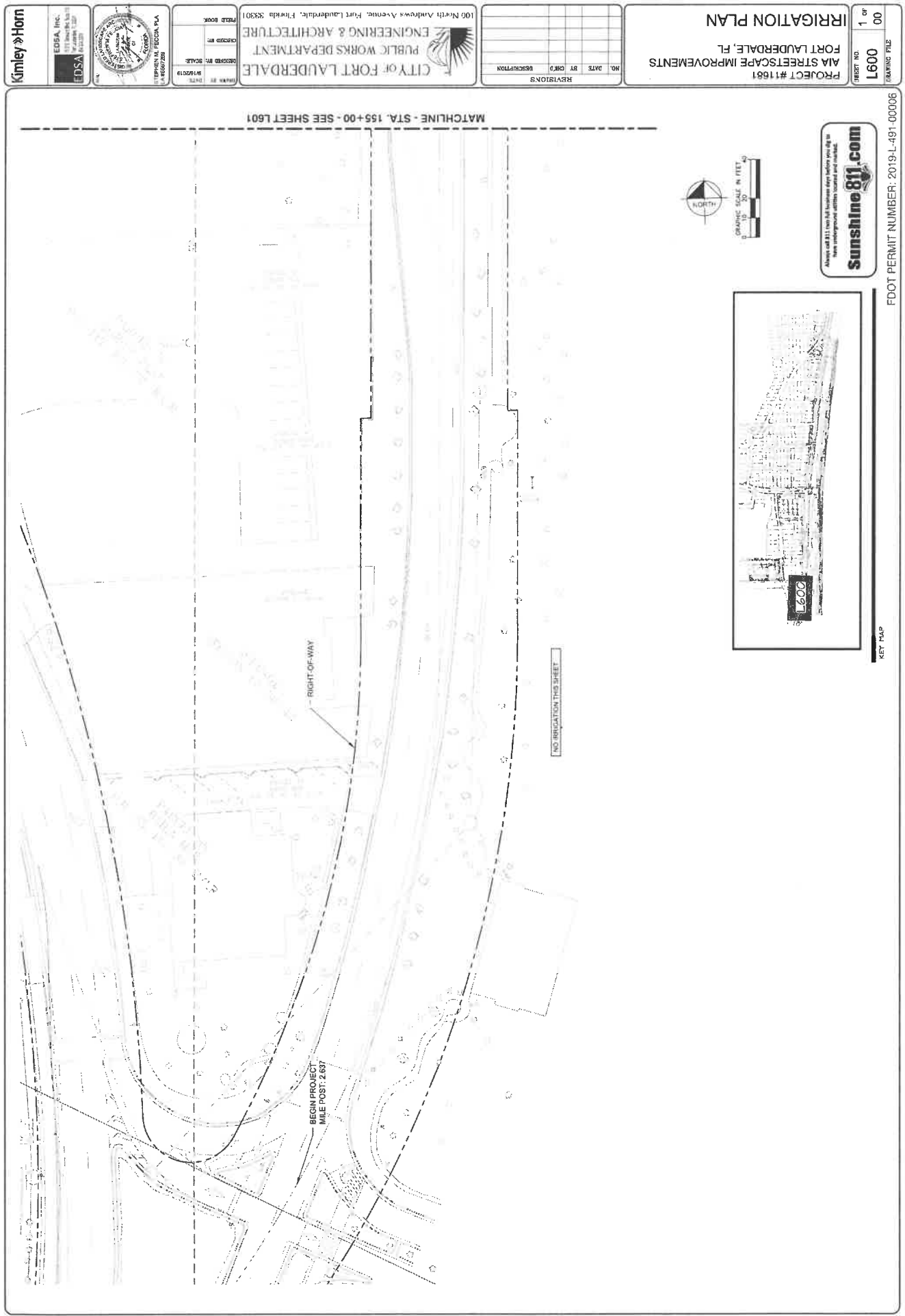
SHEET NO.
L509
1 OF
00

FDOT PERMIT NUMBER: 2019-L-491 00006

BCAL: 12-11-07

2 TYPICAL PLANT SPACING PLAN

d-shrub and gc.dwg
SCALE: 1"=1'-0"



Kimley & Horn

EDSA, Inc.
 1111 North 1st Street
 Fort Lauderdale, FL 33301
 EDSA

PROJECT NO. 1600
 SHEET NO. 1 of 00
 DRAWING FILE

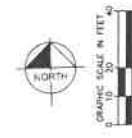
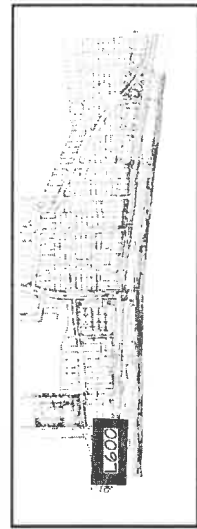
PROJECT #11681
MA STREETScape IMPROVEMENTS
FORT LAUDERDALE, FL
IRRIGATION PLAN

100 North Andrews Avenue, Fort Lauderdale, Florida 33301
CITY OF FORT LAUDERDALE
PUBLIC WORKS DEPARTMENT
ENGINEERING & ARCHITECTURE

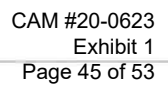
NO.	DATE	BY	CHK'D	DESCRIPTION

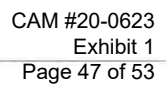
Always call 811 even if you think you know where the lines are. Digging without proper permits is illegal.

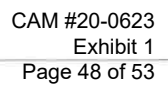
sunshine811.com



FOOT PERMIT NUMBER: 2019-L-491-00006
 KEY MAP

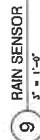
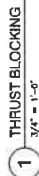












The automatic remote control valves shall be as specified on the plans, or approved equal.

5. Gate valves for 3/4" through 2-1/2" shall be of brass or bronze construction, solid wedge, IPSS threads, non-rising stem with wheel operating handle, for a continuous working pressure of 150 psi.

- A. For gate valves, use AHETEK #10-18-014 box with #10-18-015 locking lid, or as per the drawings.
- B. For control valves 3/4" through 2" the drip valve assemblies, use AHETEK #10-18-014 box with #10-18-015 locking lid, or stated as necessary to effectively house the equipment.
- C. For control wiring splices, use AHETEK #10-18-014 box with #10-18-015 locking lid, or as per the drawings.

5. Wiring used for connecting the electric control valves to the controllers shall be Type UF, 600 volt, single strand, solid copper with PVC insulation 4/64" thick. Size shall be 14 gauge, red for "hot" or lead wires, and common wire to be 14 gauge, white to color.

- c. Denslog Backfill. Cleaned gravel or crushed stone, graded from 1" maximum to 3/4" minimum.

An Independent Station Controller: Furnish a solid state controller, as specified on the plans. Each station shall be capable of timing from zero (0) minute to 99 minutes per station in one (1) minute increments.

- The stand-alone controller shall be a lockable and weather-resistant outdoor cabinet. The stand-alone controller shall have 117 VAC, 50 Hz input, 25.5 VAC, 50 Hz output for operating 24 VAC solenoids.

- The controller shall be equipped with lightning protection, by the Contractor, on both the primary (200v) and secondary (120v) circuits. The controller chassis shall be grounded to a copper clad grounding rod located at each controller.

The Contractor shall examine the areas and conditions under which landscape irrigation system is to be installed and notify the Landscape Architect in writing of conditions detrimental to the proper and timely completion of the work. The Contractor shall proceed with the work until satisfactory conditions have been corrected in a manner acceptable to the Landscape Architect.

The Contractor shall provide slabs to accommodate piping under walks or paving. The Contractor shall coordinate with other trades and install to accurate levels prior to paving work. Excavating and patching of paving and concrete will not be permitted. The Contractor shall maintain barricades, flares, and red lanterns, as required by any local codes, ordinances or permits.

- A. Excavation. The Contractor shall stake out the location of each run of pipe, sprinkler heads, sprinkler valves and isolation valves prior to trenching. Excavation shall be open vertical construction sufficiently wide to provide free working space around the work installed and to provide ample space or backfilling and tamping. Trenches for pipe shall be set to required grade lines, and connected to provide accurate grade and uniform bearing for the full length of the line. The bottom of the trenches shall be free of rock or other sharp edged objects. Minimum cover shall be as follows:

Pressure	Mainline
Lowest Piping (enter)	10" at top of pipe from Finish Grade
Lowest Piping (post-up)	12" at top of pipe from Finish Grade
Lowest Piping (post-up)	12" at top of pipe from Finish Grade

3. **Minimum Clearances:** All pipelines shall have a minimum clearance of six inches from each other and from lines of other crafts. Parallel lines shall not be installed directly over one another. No lateral line shall be installed in the main-line trench.

a. PVC pipe and joints: The Contractor shall not install solvent weld pipe when air temperature is below 40°F. Installation shall be in accordance with the manufacturer's instructions.

1. Only the solvent recommended by the pipe manufacturer shall be used. All PVC pipe and fittings shall be installed as outlined and instructed by the pipe manufacturer, and it shall be the Contractor's full responsibility to make arrangements with the pipe manufacturer for any field assistance that may be necessary. The Contractor shall assume full responsibility for the

initial bedrock on PVC lines shall be pulverized native soil, free of foreign matter. Within radius of 4" of the pipe shall be clean soil or sand. Plant locations shall take precedence over sprinkler and pipe locations. The contractor shall coordinate the location of trees and shrubs with the routing of lines and final head locations.

- Boxfill and Construction.** The Contractor shall use benches slightly higher than the benches used for the previous year to allow for settlement after the backfilling is completed. The Contractor shall clean the benches of debris and use benches as the backfilling progresses, and leave in a neat condition. No benches shall be left open for a period of more than 48 hours. Erosion control benches as required.
- The Contractor shall carefully backfill assorted materials approved for backfilling, consisting of topsoil, sand, and other approved materials, free of rock and debris over 1 in. in size. The backfill shall be completed to original quality of surrounding area without erosion areas, or irregularities.

percentages, for roods and pinning.

The Contractor shall hand place the first 6" of backfill (or to top of pipe) and have it walked on so as to secure the position of the pipe and wires.

No wheel rolling will be allowed. The Contractor shall remove rock or debris extracted from backfill materials and dispose of refuse. The Contractor shall fill any voids left in backfill with approved backfill materials.

3. Existing Lanes: Where trenching is required across existing lanes, uniformly cut strips of sod 6" wider than trench. The Contractor shall remove sod in rolls of suitable size for handling and keep moistened until replanted. The Contractor shall replant sod within 48 hours after removal of roll and water generously. The Contractor shall reseed any areas not in healthy condition equal to adjoining lanes 10 days after replanting.

- Seeded Areas: Trenching will be required across existing seeded areas, primarily roadway adjoining. The Contractor shall conform to the requirements of seedling, Section 02430 for the reseeding of the disturbed trench area.

4. Isolation Valves Shall be sized corresponding to adjacent pipe size. Specified valve bores shall be installed flush with finish grade in such a manner that surfaces forces applied to their exposed end will not be transmitted to the piping in which the valve is installed nor any other piping, wiring or other lines in the vicinity of said valves.

3. Gate Valves Install where shown, in valve boxes.
4. Electric Control Valves Shall be installed in specified valve boxes. The valves shall have 6" of 3/4" galvanized threaded pipe below the bottom of the valve. The valve box does not extend to the top of the gate valve. The gate valve shall be installed above ground and grouted together with protection. The Contractor shall place no closer than 24" to walk edges, driveway edges, buildings and walls. The Contractor shall adjust the valve to provide flow rates or rated operating pressures required for each low-flow/higher duty.

Conduit and Sleeves for Control Wiring and Main/Lateral Pipes. The Contractor shall provide and install where necessary. Contractor shall coordinate locations of previously installed sleeving with the General Site Contractor.

The Contractor shall coordinate installation of sleeves with work of other disciplines.

2. The Contractor shall connect electric control valves to controllers in a clockwise sequence to correspond with station settings beginning with Stations 1, 2, 3, etc. Automatic controllers shall be provided and installed by the Contractor as noted on the drawings. All zones will be labeled on the controller.
3. Controllers shall be equipped with lightning protection and grounded to a standard 5/8" copper clad steel ground rod driven a minimum of 8' into the earth and connected to the building's ground system.

5. The electrical service to the controllers shall be performed by an electrical subcontractor in compliance with NEC requirements.

3. Control wiring between the controller and electric valves shall be buried in main line trenches or in separate trenches. Electrical connection at valve will allow for signal so solenoid can be removed from valve with sufficient slack to allow ends to be pulled 12" above ground for examination and cleaning.

3. An expansion loop shall be provided at every valve at 100' o.c. Expansion loop shall be formed by wrapping wire at least eight times around a 3/4" pipe and withdrawing pipe.
4. The wire shall be bundled and taped every ten feet. The wire shall be laid in the trench prior to installing the pipe being careful to install wire beneath and 6" to the side of the main pipe line.
5. Electrical connections to electric control valves shall be made with Raintite Pen-Tite or Techdel 67-3-651. The connections shall be made in accordance with the manufacturer's instructions.

110 SPRINKLER HEADS
General Building.

- Sprinkler heads shall be installed as designated on the shop drawings. Heads shall be installed on flexible PVC. Top to be flush with finish grade or top of curb.

3. Head Types, this Landscapes Architect). In no case shall the spacing exceed the maximum recommended by the manufacturer.

- Pop-up, Rotary Sprinkler Heads:** Shall be installed on flex joint and be set with top of head "high" with main grade. Heads installed at corner shall have a 2" (or less) minimum extension of head and heads placed on saddle of corner shall have no curb shall be installed 24" from edge of pavement.
- Spray Pop-up Sprinkler Heads:** Shall be installed on flexible PVC and be set with top of head flush with finished grade. Sprinkler heads placed adjacent to curb will be installed 4" from curb. Sprinkler heads placed adjacent to pavement, having no curb shall be installed 24" from edge of pavement.

5.11.11. Flushing: Before sprinkler heads are set, the Contractor shall flush the lines thoroughly to make sure there is no foreign matter in the lines.

5.11.12. Completion: The Contractor shall flush the main lines from dead end fittings for a minimum of five minutes under a full head of pressure.

3. Testing: The Contractor shall notify Landscape Architect and Owner forty-eight (48) hours in advance of testing.

[illegible]

- Adjustment and Coverage of Systems:** Coordinate pressure testing with adjustments and coverage test of system as both may occur at the same time. The Contractor shall balance and adjust the various components of the system so that the overall operation of the system is most efficient. This includes a synchronization of the controllers, adjustments to pressure regulators, pressure relief valves, port circle sprinkler heads, and individual station adjustments on the

12.12 WARRANTY

A. The Contractor shall fully warrant the landscape irrigation system for a period of one (1) year after the written final acceptance and will receive a written confirmation from the Landscape Architect that the warranty period is in effect.

3. During the warranty period, the Contractor will enforce all manufacturer's and supplier's warranties as it made by the Contractor himself. Any malfunctions, deficiencies, breaks, damages, alterations, or other alterations due to materials, workmanship, or installation by the Contractor and its suppliers shall be immediately and properly corrected to the proper order as directed by the Owner and/or Landscape Architect.
4. Any damages caused by system malfunction shall be the responsibility of the Contractor who shall make full and immediate restitution for said damages.