

SECTION No(s).: 86050000
S.R. No.: A1A
PERMIT No: 2020--L-491-00006
COUNTY: BROWARD

**DISTRICT FOUR (4) AMENDMENT NUMBER TWELVE (12) TO STATE OF FLORIDA
DEPARTMENT OF TRANSPORTATION LANDSCAPE INCLUSIVE
MEMORANDUM OF AGREEMENT FOR STATE ROAD A1A**

THIS AMENDMENT Number Twelve (12) to the Agreement dated January 31, 2008, made and entered into this _____ day of _____ 20____ by and between the State of Florida Department of Transportation hereinafter called the **DEPARTMENT** and the **CITY OF FORT LAUDERDALE**, a municipal corporation of the State of Florida, hereinafter called the AGENCY.

W I T N E S S E T H

WHEREAS, the parties entered into the Landscape Inclusive Maintenance of Agreement dated, January 31, 2008 for the purpose of maintaining the landscape improvements by the AGENCY on State Road A1A; and,

WHEREAS, the DEPARTMENT and the AGENCY have agreed to add additional landscape improvements to be installed by permit on State Road A1A in accordance with the above referenced Agreement; and,

WHEREAS, the AGENCY by Resolution No. _____ dated _____, attached hereto and by this reference made a part hereof, desires to enter into this Agreement and authorized its officers to do so; and,

NOW THEREFORE, for and in consideration of mutual benefits that flow each to the other, the parties covenant and agree as follows:

1. Pursuant to Paragraph Number Thirteen (13) in the Agreement dated January 31, 2008, the AGENCY has agreed to construct additional landscape improvements or to modify an improvement located as indicated in **Exhibit "A"**, State Road A1A (North Ocean Boulevard) from (M.P.4.652) to N.E. 23rd Street (M.P.4.713), in accordance with the plans attached as **Exhibit "B"**.
2. The AGENCY shall agree to maintain the additional landscape improvements in the Agreement described above in accordance with the Maintenance Plan, **Exhibit "C"** of the original agreement and,

II. SPECIFIC PROJECT SITE MAINTENANCE REQUIREMENTS AND RECOMMENDATIONS:

Installation of new plant material associated with this project along and within FDOT R.O.W. and included in the Landscape Improvement Maintenance Boundary Map is minimal and limited to:

- a. *10- Live Oaks ,2- Sylvester Palms and 1 Gumbo Limbo installed in the R.O.W. along the west side of A-1-A. Sylvester Palms shall allowed to grow to a mature height. Maintenance of these palms shall be limited to removal of dead fronds periodically as needed. Live Oaks and Gumbo Limbo shall be allowed to attain a mature height and crown spread. Live Oaks and Gumbo Limbo shall be pruned prior to hurricane season every year so as not to present a problem with falling over during high winds. Pruning shall be done by a certified arborist.*

- b. *Hedges and Ground Cover installed within the west Right of Way:*

Acalapha Wilkesiana (Copper Leaf) shall be maintained at a height of between 6' and 10' o.a., and maintained at a width no greater than 4'.

Hamelia Patens 'Compacta' (Dwarf Firebush) installed in the Right of Way shall be maintained at a height of 36" and maintained at a width of 3'.

Podocarpus Maki (Podocarpus) shall be maintained at a height not to exceed 30" and a width of 24".

Pentas 'Pink Shorts' shall be allowed to attain its mature height and spread without sheering.

Trachelospermum Asiaticum 'Minima' (Jasmine Minima) Shall be allowed to attain its natural height (10-12") and edges along bedlines shall be sheered to prevent this ground cover from spreading onto walkways and outside the designated bedlines.

Except as modified by this Amendment, all terms and conditions of the original Agreement and all Amendments thereto shall remain in full force and effect.

LIST OF EXHIBITS

- Exhibit A - Landscape Improvements Maintenance Boundaries
- Exhibit B - Landscape Improvement Plans

In Witness whereof, the parties hereto have executed with this Amendment effective the ____ day _____ year written and approved.

CITY OF FORT LAUDERDALE, through its
CITY COMMISSIONERS

By: _____
Dean J. Trantalis, Mayor

____ day of _____, 2020

Christopher J. Lagerbloom ICMA-CM,
City Manager

Approved as to form by Office of City Attorney

Kimberly Cunningham Mosley,
Assistant City Attorney

ATTEST:

Jeffrey A. Modarelli, City Clerk

(SEAL)

STATE OF FLORIDA
DEPARTMENT OF TRANSPORTATION

By: _____
Transportation Development Director

Attest: _____ (SEAL)
Executive Secretary

Legal Review Date

Office of the General Counsel

SECTION No(s): 86050000
S.R. No.: A1A
PERMIT No: 2020--L-491-00006
COUNTY: BROWARD

EXHIBIT A

LANDSCAPE IMPROVEMENTS MAINTENANCE BOUNDARIES

I. PERMIT PROJECT LANDSCAPE MAINTENANCE LIMITS:

State Road A1A from M.P. 4.652 to 4.713 (Section 86050000)

II. INCLUSIVE LANDSCAPE MAINTENANCE AGREEMENT LIMITS FOR STATE ROAD A1A FROM:

State Road 5 (US 1) M.P. 0.000 (Section 86180000)
(US 1) to Flamingo Avenue (M.P. 6.410) (Section 86050000)

By Individual Sections:

Southbound One Way (Section 86050100)
M.P. 0.0000 (Seville Street) to M.P. 0.926 (Bahia Mar Hotel Entrance)

Northbound One Way / Seabreeze Boulevard / 17th Street Causeway (Section 86180000):

M.P. 0.000 (State Road 5) (US 1) to M.P. 2.964 (State Road 842) (Las Olas Boulevard)

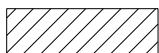
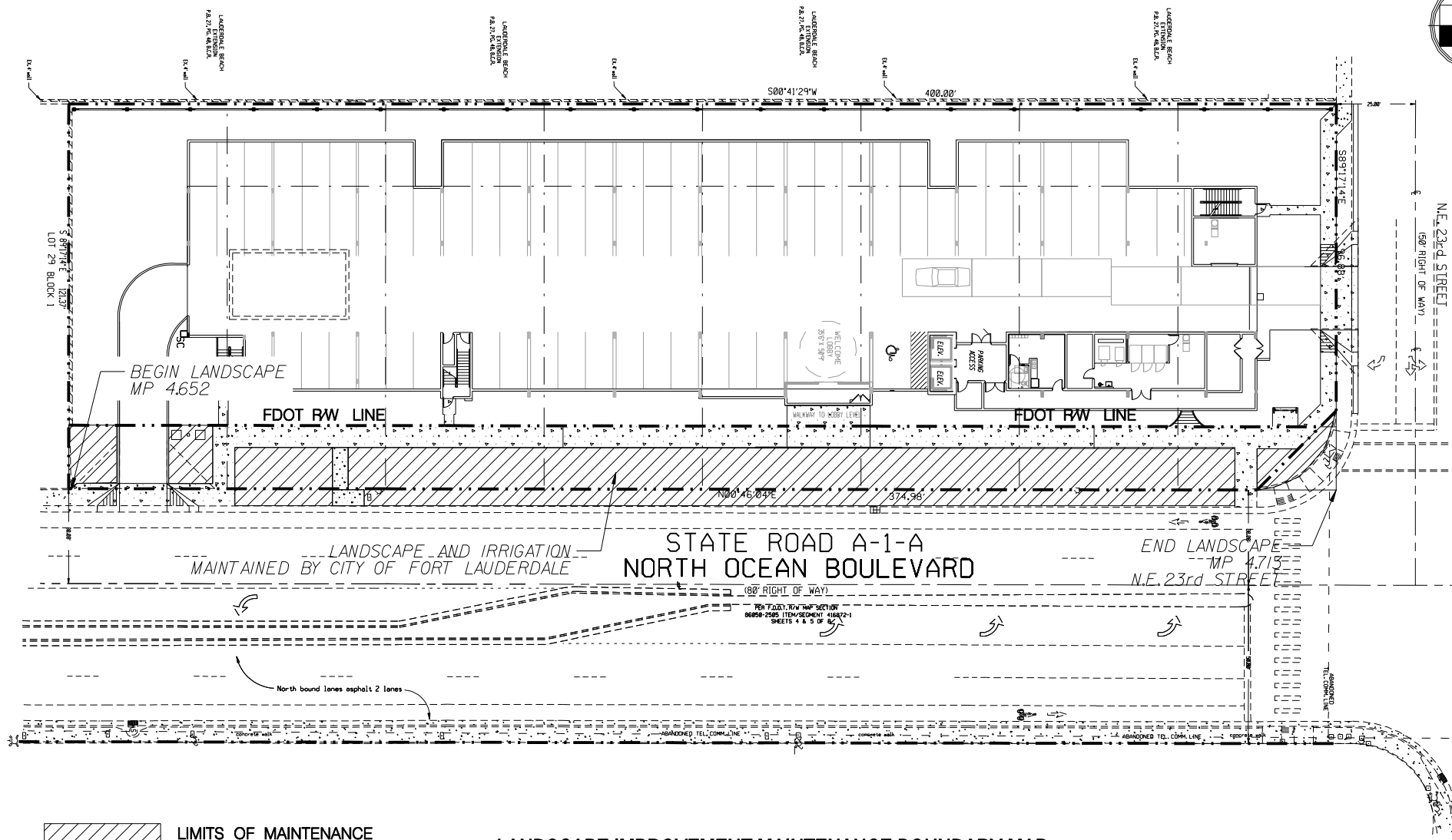
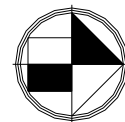
North Fort Lauderdale Beach Area (Section 86050000):

M.P. 2.039 (south of Las Olas Boulevard) to M.P. 6.410 (Flamingo Avenue)

III. PERMIT PROJECT LANDSCAPE MAINTENANCE BOUNDARY LIMITS MAP:

*All limits of the original agreement and amendments shall apply

Please See Attached



LIMITS OF MAINTENANCE
BY CITY OF FORT LAUDERDALE

LANDSCAPE IMPROVEMENT MAINTENANCE BOUNDARY MAP

CITY OF FORT LAUDERDALE

FDOT PERMIT No. 2020-L-491-00006

STATE ROAD A-1-A

ROADWAY ID: 86050000

MARCH 19, 2020

GGB Engineering, Inc.

CIVIL AND FORENSIC ENGINEERS • LAND PLANNERS
• CONSTRUCTION MANAGERS
FLORIDA CERTIFICATE OF AUTHORIZATION No. 8118
2599 Stirling Road, Suite C-202 Phone: (954) 986-9899
Fort Lauderdale, Florida 33312 Fax: (954) 986-9855

CLIENT

Berrie Architecture & Design, Inc.

4286 NW 42nd Terrace

Coconut Creek, 33073

PROJECT

CAMBRIA SUITES

FORT LAUDERDALE

FLORIDA

TASK

LANDSCAPE IMPROVEMENT
MAINTENANCE BOUNDARY MAP

ORIGINAL
REVISION:

1
2
3
4
5

JOB NO. 16-1016

DRAWN MM

DESIGNED GGB

CHECKED GGB

SCALE: 1"=50'

SHEET 1 OF 1

CAM 20-0418
AS SHOWN BY TOWER

EXHIBIT 1

SECTION No(s):	86050000
S.R. No.:	A1A
PERMIT No:	2020--L-491-00006
COUNTY:	BROWARD

EXHIBIT B

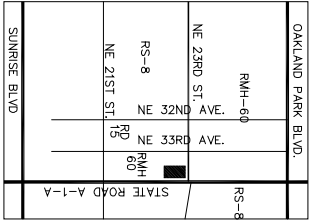
LANDSCAPE IMPROVEMENT PLANS

The AGENCY agrees to install the landscape improvements in accordance with the plans and specifications attached hereto and incorporated herein.

Please see attached plans prepared by: Michael Fay, RLA
Michael Fay Landscape Architecture
Sheets – L – 1, 2, 3
 LL - 1
 IR – 1, 2

Date: April 17, 2020

SITE AREA = 36,288 S.F.

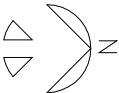


LOCATION MAP:

TREES AND PALMS TO BE REMOVED			
NUMBER	SCIENTIFIC NAME (COMMON NAME)	SIZE	CONDITION
1	VEITCHIA MERILLI (CHRISTMAS PALM)	DOUBLE TRN., 8' C.T.	REMOVE
2	COCOS 'MALAYAN GREEN' (COCOONUT)	3' C.T.	REMOVE
3	COCOS 'MALAYAN GREEN' (COCOONUT)	14' C.T.	REMOVE
4	COCOS 'MALAYAN GREEN' (COCOONUT)	16' C.T.	REMOVE
5	COCOS 'MALAYAN GREEN' (COCOONUT)	16' C.T.	REMOVE
6	SABAL PALM (CABBAGE PALM)	18' C.T.	REMOVE
7	LITOH CHINENSIS (LYCHEE NUT)	12" DBH., 20' X 15' SPR.	REMOVE
8	CALLISTEMON VIMINALIS (BOTTLEBRUSH)	12" DBH., 16' X 8' SPR.	REMOVE
9	HYOPHORBE LAGENICULUS (BOTTLE PALM)	5' C.T.	REMOVE
10	PTCHOSPERMA ELEGANS (BOTTLE PALM)	10' C.T.	REMOVE
11	VEITCHIA MERILLI (CHRISTMAS PALM)	12' C.T.	REMOVE
12	SABAL PALM (CABBAGE PALM)	16' C.T.	REMOVE
13	VEITCHIA MERILLI (CHRISTMAS PALM)	11' C.T.	REMOVE
14	VEITCHIA MERILLI (CHRISTMAS PALM)	16" DBH., 16' X 8' SPR.	REMOVE
15	VEITCHIA MERILLI (CHRISTMAS PALM)	16" DBH., 16' X 8' SPR.	REMOVE
16	VEITCHIA MERILLI (CHRISTMAS PALM)	16" DBH., 16' X 8' SPR.	REMOVE
17	VEITCHIA MERILLI (CHRISTMAS PALM)	16" DBH., 16' X 8' SPR.	REMOVE
18	VEITCHIA MERILLI (CHRISTMAS PALM)	16" DBH., 16' X 8' SPR.	REMOVE
19	VEITCHIA MERILLI (CHRISTMAS PALM)	16" DBH., 16' X 8' SPR.	REMOVE
20	VEITCHIA MERILLI (CHRISTMAS PALM)	16" DBH., 16' X 8' SPR.	REMOVE
21	VEITCHIA MERILLI (CHRISTMAS PALM)	16" DBH., 16' X 8' SPR.	REMOVE
22	VEITCHIA MERILLI (CHRISTMAS PALM)	16" DBH., 16' X 8' SPR.	REMOVE
23	VEITCHIA MERILLI (CHRISTMAS PALM)	16" DBH., 16' X 8' SPR.	REMOVE
24	VEITCHIA MERILLI (CHRISTMAS PALM)	16" DBH., 16' X 8' SPR.	REMOVE
25	VEITCHIA MERILLI (CHRISTMAS PALM)	16" DBH., 16' X 8' SPR.	REMOVE
26	VEITCHIA MERILLI (CHRISTMAS PALM)	16" DBH., 16' X 8' SPR.	REMOVE
27	VEITCHIA MERILLI (CHRISTMAS PALM)	16" DBH., 16' X 8' SPR.	REMOVE
28	VEITCHIA MERILLI (CHRISTMAS PALM)	16" DBH., 16' X 8' SPR.	REMOVE
29	VEITCHIA MERILLI (CHRISTMAS PALM)	16" DBH., 16' X 8' SPR.	REMOVE
30	VEITCHIA MERILLI (CHRISTMAS PALM)	16" DBH., 16' X 8' SPR.	REMOVE

EXISTING TREE SCHEDULE

SCALE: 1" = 20'



SCALE: 1" = 20'-0"

48 HOURS BEFORE DIGGING
BROWARD • PALM BEACH • MIAMI • DADE
COUNTIES
FOR UNDERGROUND UTILITIES
NOTIFICATION AND LOCATION
1-800-432-4770

FDOT Landscape Permit
number 2020-L-491-00006

CAMBRIA SUITES HOTEL
2231 N.Ocean Blvd.
Fort Lauderdale, Florida

EXISTING TREE SCHEDULE

DATE:
4-18-17
DRAWN BY:
M. FAY
CHECKED BY:

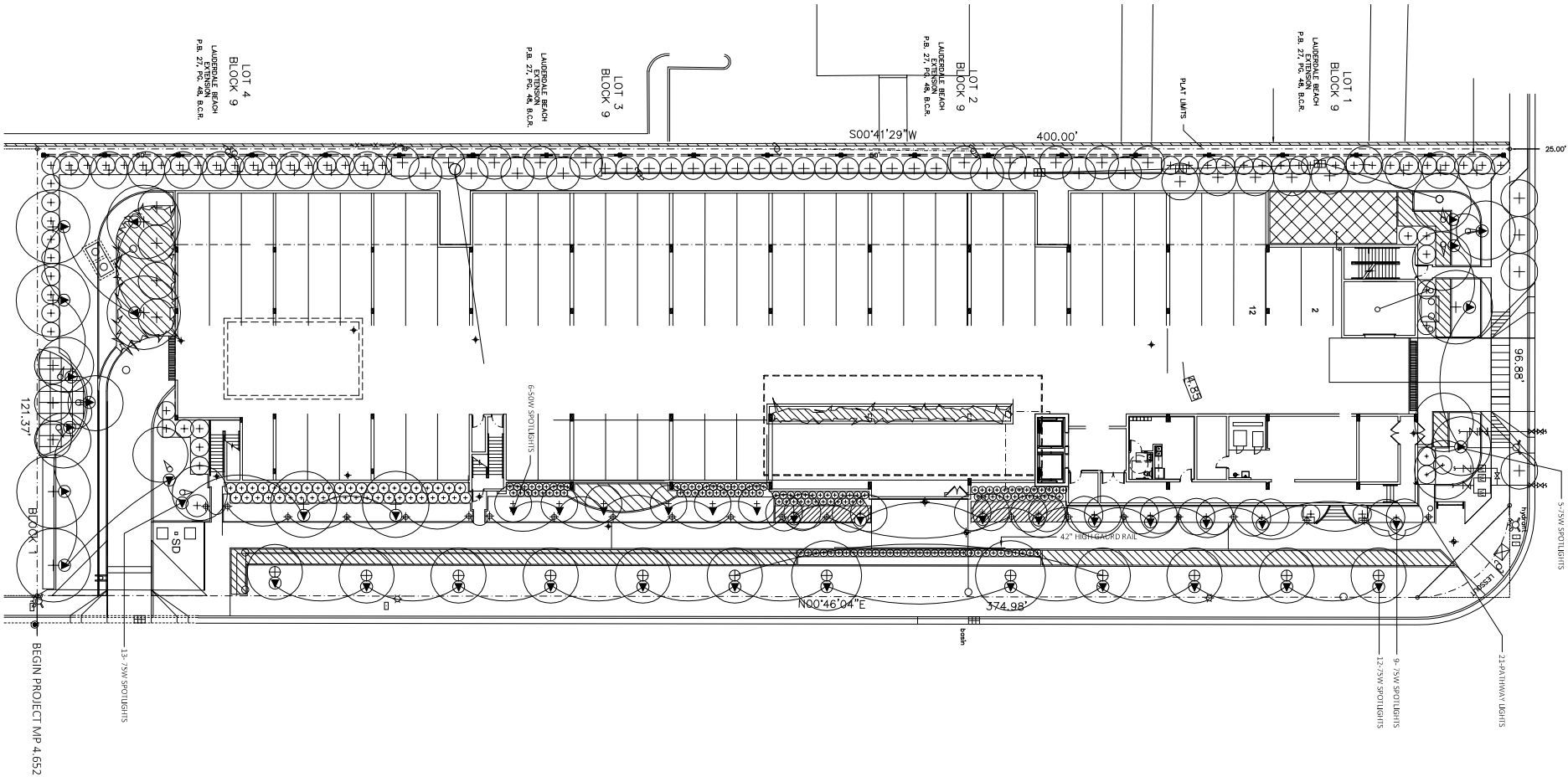
CAD FILE:

REVISIONS:
1-31-18
1-14-19
3-21-19
4-14-20

MICHAEL FAY
LANDSCAPE ARCHITECT

420 N.W. 7 STREET, DELRAY BCH.,FL.,33444

MICHAEL FAY
LANDSCAPE ARCHITECT
REG.#540



- LANDSCAPE LIGHTING NOTES:
- ALL FIXTURES ARE MANUFACTURED BY HAMPTON BAY
 - FINAL LOCATION OF ALL SPOT LIGHTS AT TREE LOCATIONS SHALL BE DETERMINED AFTER TREES HAVE BEEN INSTALLED.

PROPOSED LANDSCAPE LIGHTING SCHEDULE		
SYMBOL	QUANTITY	ITEM
	39	MODEL# 1001 488 832, 75 W. LED LOW VOLTAGE, SPOTLIGHT, BLACK FINISH
	6	MODEL# 1001 488 703, 50W, LED LOW VOLTAGE, SPOTLIGHT, BLACK FINISH
	21	MODEL# 1001 488 905, LED, LOW VOLTAGE PATHWAY/EDGEWATER/SPRINKLED BRONZE FINISH



SCALE: 1" = 20'-0"

FDOT Landscape Permit
number 2020-L-491-00006

48 HOURS BEFORE DIGGING
BROWARD • PALM BEACH • MIAMI • DADE • MONTESSANO
ST. LOUIS • HAWAII • CALIF. • TOL. FREE
1-800-432-4770
FOR UNDERGROUND UTILITIES
NOTIFICATION AND LOCATION

CAMBRIA SUITES HOTEL
2231 N. OCEAN BLVD.
FORT LAUDERDALE, FLORIDA
LANDSCAPE LIGHTING LAYOUT

DATE:
4-18-17
DRAWN BY:
M. FAY
CHECKED BY:

REVISIONS:
5-4-17
1-31-18
4-14-20

CAD FILE:

MICHAEL FAY
LANDSCAPE ARCHITECT

420 N.W. 7 STREET, DELRAY BCH.,FL.,33444

MICHAEL FAY
LANDSCAPE ARCHITECT
REG.#540

SHEET NO.
DRAWING FILE NO.
#

