

Project Areas

Fort Lauderdale, FL - City Level Report

All statistical results are aggregated for the listed project areas and their service areas. Service areas are based on 10-minute (1/2 mile) walk times from project access points defined for each project area and based upon the walkable network.

City Statistics

Current

City: Fort Lauderdale, FL

Park Acres 958

Total Population 178,377

Served Population 136,536

Percent Served 76.5%

Legend

 City Boundary

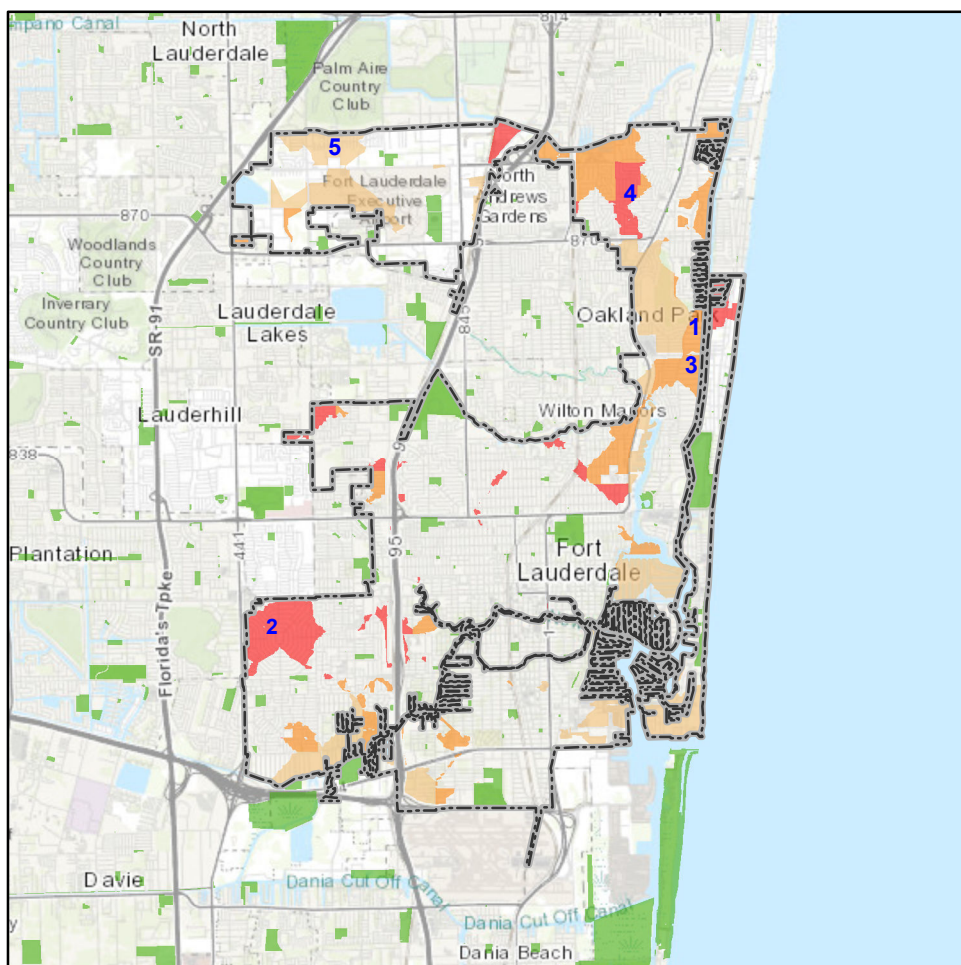
 Parks

Park Need

 High

 Moderate To High

 Moderate

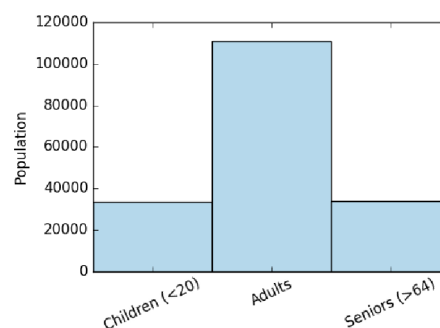


This report was created on August 23, 2019 using the ParkServe® interactive mapping site. It is for informational purposes only. The providers of this report disclaim any and all warranties, express or implied, including fitness for a particular purpose or merchantability, and make no representation that the report is complete, accurate, or error free. Use and reliance on this report is at the sole risk of the party using same.

© 2019 The Trust for Public Land.

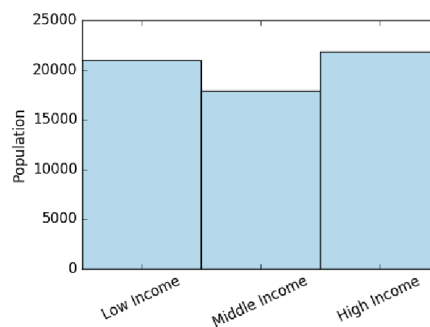
Population	Served
Total Population	136,536

Age	Served
Children (less than age 20)	33,347
Adults (age 20 to age 64)	111,067
Seniors (age 65 and up)	33,964



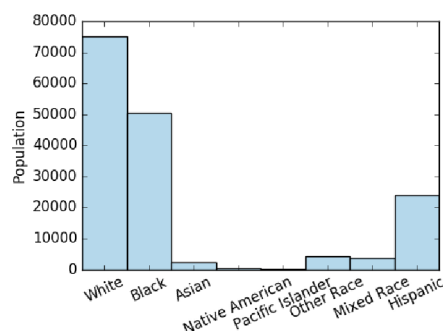
Household Income	Served
Low income	20,985
Middle income	17,946
High income	21,807

(Generated From Regional Median Incomes)



Race/Ethnicity	Served
White	75,073
Black	50,491
Asian	2,437
Native American	410
Pacific Islander	96
Other Race	4,344
Mixed Race	3,699
Hispanic*	23,809

* U.S. Census captures Hispanic Origin separate from race



Demographic information is derived from ESRI 2018 Demographic Forecast Block Groups data.

This report was created on August 23, 2019 using the ParkServe® interactive mapping site. It is for informational purposes only. The providers of this report disclaim any and all warranties, express or implied, including fitness for a particular purpose or merchantability, and make no representation that the report is complete, accurate, or error free. Use and reliance on this report is at the sole risk of the party using same.

© 2019 The Trust for Public Land.