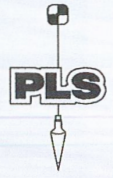


m.d.o.k



SKETCH AND LEGAL DESCRIPTION
BY
PULICE LAND SURVEYORS, INC.
5381 NOB HILL ROAD
SUNRISE, FLORIDA 33351

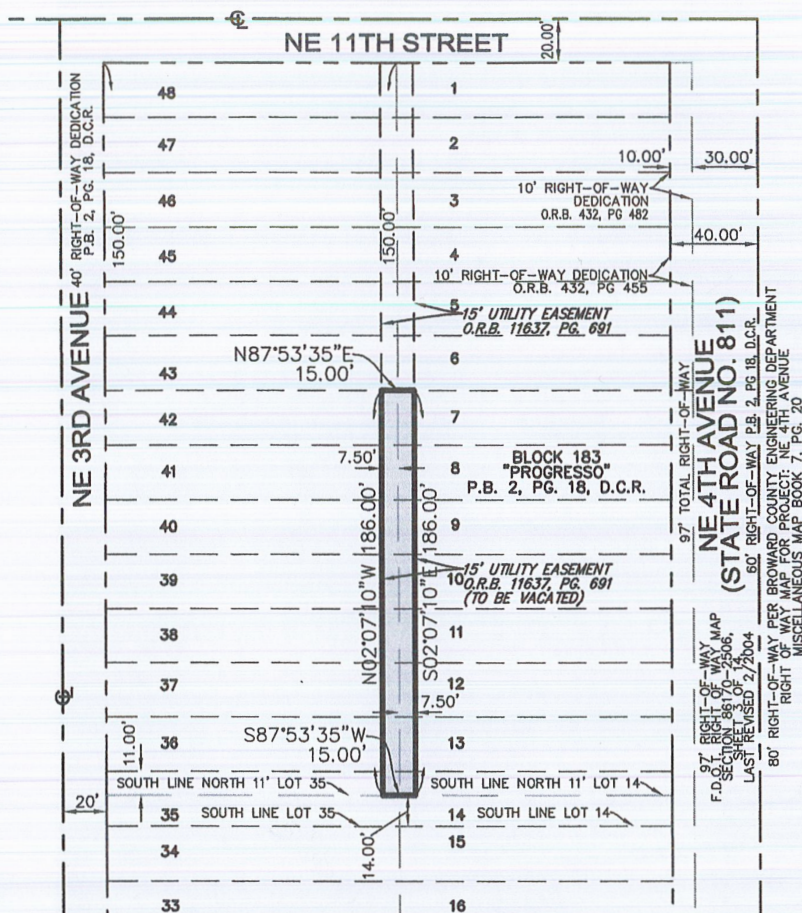
TELEPHONE: (954) 572-1777 • FAX: (954) 572-1778
E-MAIL: surveys@pulicelandsurveyors.com CERTIFICATE OF AUTHORIZATION LB#3870



LEGAL DESCRIPTION: (UTILITY EASEMENT VACATION)

THAT PORTION OF THE 15 FOOT WIDE UTILITY EASEMENT RECORDED IN OFFICIAL RECORDS BOOK 11637, PAGE 691 LYING WITHIN THE WEST 7.50 FEET OF LOTS 7 THROUGH 14, INCLUSIVE AND THE EAST 7.50 FEET OF LOTS 35 THROUGH 42, INCLUSIVE, IN BLOCK 183, LESS THE SOUTH 14.00 FEET THEREOF, OF "PROGRESSO", ACCORDING TO THE PLAT THEREOF, AS RECORDED IN PLAT BOOK 2, PAGE 18, OF THE PUBLIC RECORDS OF DADE COUNTY, FLORIDA.

SAID LANDS SITUATE, LYING AND BEING IN THE CITY OF FORT LAUDERDALE, BROWARD COUNTY, FLORIDA AND CONTAINING 2,790 SQUARE FEET (0.0640 ACRES) MORE OR LESS.



NOTES:

- 1) BEARINGS ARE BASED ON AN ASSUMED MERIDIAN FOR THE EAST RIGHT-OF-WAY LINE OF NE 3RD AVENUE BEING N02°07'10"W.
- 2) THIS IS NOT A SKETCH OF SURVEY AND DOES NOT REPRESENT A FIELD SURVEY.
- 3) THIS SKETCH IS NOT VALID WITHOUT THE SIGNATURE AND ORIGINAL RAISED SEAL OF A FLORIDA LICENSED SURVEYOR AND MAPPER.
- 4) ALL RECORDED DOCUMENTS ARE PER THE PUBLIC RECORDS OF BROWARD COUNTY, UNLESS OTHERWISE NOTED.

LEGEND:

- CL CENTERLINE
- O.R.B. OFFICIAL RECORDS BOOK
- P.B. PLAT BOOK
- PG. PAGE
- F.D.O.T. FLORIDA DEPARTMENT OF TRANSPORTATION
- D.C.R. MIAMI-DADE COUNTY RECORDS
- FPL FLORIDA POWER & LIGHT

FILE: PLAZA STREET PARTNERS

SCALE: 1"=80' DRAWN BY: B.E./L.S.

ORDER NO.: 66618

DATE: 11/19/19; REV 12/12/19

UTILITY EASEMENT VACATION

FORT LAUDERDALE, BROWARD COUNTY, FLORIDA

FOR: SHERWIN WILLIAMS

Beth Burns

- ☐ JOHN F. PULICE, PROFESSIONAL SURVEYOR AND MAPPER LS2691
 - ☒ BETH BURNS, PROFESSIONAL SURVEYOR AND MAPPER LS6136
 - ☐ VICTOR R. GILBERT, PROFESSIONAL SURVEYOR AND MAPPER LS6274
- STATE OF FLORIDA