

PROJECT LOCATION
SR A1A (FORT LAUDERDALE
BEACH BOULEVARD)
AT SE 5TH STREET
MP 2.795

SR A1A (FORT LAUDERDALE BEACH BOULEVARD) (86180) AT SE 5 STREET

SIGNALIZATION PLANS

INDEX OF SHEETS

SHEET NO.	SHEET DESCRIPTION
1	KEY SHEET AND TABULATION OF QUANTITIES
2	SIGNATURE SHEET
3	GENERAL NOTES
4	TEMPORARY TRAFFIC CONTROL NOTES
5	SIGNALIZATION PLAN
6	GUIDE SIGN WORKSHEET
7	MAST ARM TABULATION SHEET
8	ULTIMATE LOADING
9	MAST ARM ELEVATION
10-11	MAST ARM DETAILS
12	UTILITY LOCATION PLAN
UTV-1	VERIFIED UTILITY LOCATE
CTL-1	PROJECT CONTROL
GT-1	REPORT OF CORE BORINGS

PLANS PREPARED BY:

DRMP, INC.
6853 SW 18TH STREET, SUITE 310
BOCA RATON, FL, 33433
PHONE: (561) 451-8124 FAX: (561) 451-8142
CERTIFICATE OF AUTHORIZATION NO. 2648
CONTRACT NO. C-9W15
VENDOR NO. 59179174001

SIGNALIZATION PLANS
ENGINEER OF RECORD: CHRISTINE DALICKAS, P.E. LICENSE NO. 62423
FDOT PROJECT MANAGER: JOSE GUERRERO, P.E.

NOTE: THE SCALE OF THESE PLANS MAY
HAVE CHANGED DUE TO REPRODUCTION.

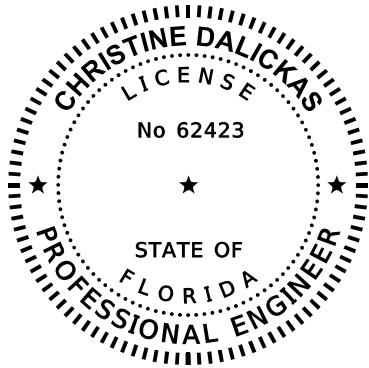
GOVERNING STANDARDS AND SPECIFICATIONS:
FLORIDA DEPARTMENT OF TRANSPORTATION, 2016-17 DESIGN STANDARDS
AND REVISED INDEX DRAWINGS AS APPENDED HEREIN, AND 2017
STANDARD SPECIFICATIONS FOR ROAD AND BRIDGE CONSTRUCTION, AS
AMENDED BY CONTRACT DOCUMENTS.

TABULATION OF QUANTITIES

PAY ITEM NO.	DESCRIPTION	UNIT	436219-2-72-01		436219-2-72-04	
			PLAN	FINAL	PLAN	FINAL
102-14	TRAFFIC CONTROL OFFICER	HR	32			
102-60	WORK ZONE SIGN	ED	510			
102-74-1	CHANNELIZING DEVICE- TYPES I, II, DI, VP, DRUM AND LCD	ED	855			
102-74-2	CHANNELIZING DEVICE- TYPE III, 6'	ED	8			
102-76	ARROW BOARD/ADVANCE WARNING ARROW PANEL	ED	45			
102-99	PORTABLE CHANGEABLE MESSAGE SIGN, TEMPORARY	ED	118			
110-4-1	REMOVAL OF EXISTING CONCRETE SIDEWALK-FOR PUSH BUTTON/MAINTENANCE	SF	117			
	CONTRACTS ONLY (43621927201)					
522-1	SIDEWALK CONCRETE, 4" THICK	SY	13			
* 526-1-2	PAVERS, ARCHITECTURAL, SIDEWALK	SY	13			
630-2-11	CONDUIT, FURNISH & INSTALL, OPEN TRENCH	LF	15			
630-2-12	CONDUIT, FURNISH & INSTALL, DIRECTIONAL BORE	LF	230			
632-7-1	SIGNAL CABLE - NEW OR RECONSTRUCTED FURNISH & INSTALL	PI	1			
632-7-6	SIGNAL CABLE - REMOVE- INTERSECTION	PI	1			
635-2-11	PULL & SPLICE BOX, F&I, 13" X 24" COVER SIZE	EA	11			
646-1-11	ALUMINUM SIGNAL POLE, FURNISH & INSTALL PEDESTAL	EA	1			
* 649-21-109	STEEL MAST ARM ASSEMBLY, FURNISH AND INSTALL TROMBONE STYLE, 36'	EA	1			
	PROJECT 436219-2-72-01					
* 649-21-110	STEEL MAST ARM ASSEMBLY, FURNISH AND INSTALL TROMBONE STYLE, 46'	EA	1			
	PROJECT 436219-2-72-01					
* 649-21-999A	PAINTING MAST ARM ASSEMBLY			LS	2	
649-36-300	MAST ARM, REMOVE-SHALLOW FOUNDATION BOLT ON ATTACHMENT	EA	1			
650-1-14	TRAFFIC SIGNAL, FURNISH & INSTALL, ALUMINUM 3 SECTION, 1WAY	AS	4			
653-1-11	PEDESTRIAN SIGNAL, FURNISH & INSTALL, LED COUNTDOWN, 1WAY	AS	1			
* 660-4-11	VIDEO DETECTION SYSTEM-VIDEO, FURNISH & INSTALL CABINET EQUIPMENT	EA	1			
660-4-12	VIDEO DETECTION SYSTEM-VIDEO, FURNISH & INSTALL ABOVE GROUND EQUIPMENT	EA	2			
665-1-11	PEDESTRIAN DETECTOR, FURNISH & INSTALL, STANDARD	EA	1			
670-5-400	TRAFFIC CONTROLLER ASSEMBLY, MODIFY	AS	1			
700-5-22	INTERNALLY ILLUMINATED SIGN, FURNISH & INSTALL, OVERHEAD MOUNT,	EA	1			
	12-18 SF					
700-5-50	INTERNALLY ILLUMINATED SIGN, RELOCATE	EA	1			
* 715-1-13	LIGHTING CONDUCTORS, F&I, INSULATED, NO. 4 TO NO. 2	LF	411			

* PAY ITEM NOT IN CONTRACT. PAY ITEMS TO BE CONSTRUCTED BY LATEST DESIGN STANDARD (2016-17)

REVISIONS				DRMP, INC. 6853 SW 18TH STREET, STE. 310, BOCA RATON, FL 33453 PHONE: (561) 451-8124 FAX: (561) 451-8142 CERTIFICATE OF AUTHORIZATION NO. 2648 CHRISTINE DALICKAS, P.E. LICENSE NUMBER 62423	STATE OF FLORIDA DEPARTMENT OF TRANSPORTATION			KEY SHEET AND TABULATION OF QUANTITIES	SHEET NO. 1
DATE	DESCRIPTION	DATE	DESCRIPTION		ROAD NO.	COUNTY	FINANCIAL PROJECT ID		
11-26-18	2 REVISED PAY ITEM NUMBER AND DESCRIPTION				A1A	BROWARD	436219-2-72-01 436219-2-72-04		
9-16-19	3 ADDED MAST ARM PAINT PAY ITEM NUMBER AND UPDATED FPID								



THIS DOCUMENT HAS BEEN DIGITALLY
SIGNED AND SEALED BY:

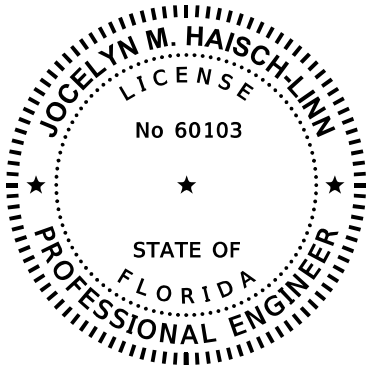
PRINTED COPIES OF THIS DOCUMENT ARE
NOT CONSIDERED SIGNED AND SEALED
THE SIGNATURE MUST BE VERIFIED
ON THE ELECTRONIC DOCUMENTS

DRMP, INC.
6853 SW 18TH STREET, SUITE 310
BOCA RATON, FL 33433
CERTIFICATION OF AUTHORIZATION NO 2648
CHRISTINE DALICKAS, P.E. NO 62423

THE ABOVE NAMED PROFESSIONAL ENGINEER SHALL BE RESPONSIBLE FOR THE
FOLLOWING SHEETS IN ACCORDANCE WITH RULE 61G15-23.004, F.A.C.

SIGNALIZATION PLANS

SHEET NO.	SHEET DESCRIPTION
1	KEY SHEET AND TABULATION OF QUANTITIES
2	SIGNATURE SHEET
3	GENERAL NOTES
4	TEMPORARY TRAFFIC CONTROL NOTES
5	SIGNALIZATION PLAN
6	GUIDE SIGN WORKSHEET
7	MAST ARM TABULATION SHEET
8	ULTIMATE LOADING
12	UTILITY LOCATION PLAN



THIS DOCUMENT HAS BEEN DIGITALLY
SIGNED AND SEALED BY:

PRINTED COPIES OF THIS DOCUMENT ARE
NOT CONSIDERED SIGNED AND SEALED
THE SIGNATURE MUST BE VERIFIED
ON THE ELECTRONIC DOCUMENTS

DRMP, INC.
941 LAKE BALDWIN LANE
ORLANDO, FL 32814
CERTIFICATION OF AUTHORIZATION
JOCELYN M. HAISCH-LINN, P.E. NO 60103

THE ABOVE NAMED PROFESSIONAL ENGINEER SHALL BE RESPONSIBLE FOR THE
FOLLOWING SHEETS IN ACCORDANCE WITH RULE 61G15-23.004, F.A.C.

SIGNALIZATION PLANS

SHEET NO.	SHEET DESCRIPTION
2	SIGNATURE SHEET
9	MAST ARM ELEVATION
10-11	MAST ARM DETAILS

REVISIONS				DRMP, INC. 6853 SW 18TH STREET, STE. 310, BOCA RATON, FL 33455 PHONE: (561) 451-8124 FAX: (561) 451-8142 CERTIFICATE OF AUTHORIZATION NO. 2648	STATE OF FLORIDA DEPARTMENT OF TRANSPORTATION			SIGNATURE SHEET	SHEET NO.
DATE	DESCRIPTION	DATE	DESCRIPTION		ROAD NO.	COUNTY	FINANCIAL PROJECT ID		
9-16-19	A UPDATED FPID				A1A	BROWARD	B 436219-2-72-01 436219-2-72-04		2

GENERAL NOTES:

1. UTILITY OWNERS:

COMPANY

AT&T DISTRIBUTION

BCTED-COPPER INTERCONNECT CABLE

AND FIBER OPTIC CABLE

COMCAST CABLE

CITY OF FORT LAUDERDALE

FPL DISTRIBUTION

TECO PEOPLES GAS

CONTACT

OTIS KEEVE

ROBERT BLOUNT

LEONARD MAXWELL-NEUBOLD

KEITH HUTCHISON

BYRON SAMPLE

MAX CHAMORRO

TELEPHONE NUMBERS

954-309-0753

954-847-2745

954-447-8405

954-828-7682

954-321-2056

954-453-0812
2. THE CONTRACTOR SHALL CONTACT THE CITY OF FORT LAUDERDALE AND CITY OF FORT LAUDERDALE POLICE DEPARTMENT FOURTEEN (14) DAYS IN ADVANCE OF BEGINNING CONSTRUCTION. CONTACT THE CITY OF FORT LAUDERDALE AT 954-828-5000, CITY OF FORT LAUDERDALE POLICE DEPARTMENT AT 954-828-5700.
3. THE AGENCY RESPONSIBLE FOR MAINTENANCE OF THE TRAFFIC SIGNALS AND RELATED ITS COMMUNICATIONS EQUIPMENT IS BROWARD COUNTY TRAFFIC ENGINEERING DIVISION (BCTED). ALL TRAFFIC SIGNAL AND RELATED ITS COMMUNICATION EQUIPMENT WHEN USING PAY ITEM SERIES: 632, 650, 653, AND 670 FOR THIS CONTRACT SHALL BE COMPATIBLE WITH BCTED'S CENTRAL COMPUTER NETWORK SYSTEM. PRIOR TO ANY PURCHASING OF THE ABOVE PRODUCTS, ENSURE THEY HAVE BEEN APPROVED FOR SYSTEM COMPATIBILITY BY THE MAINTAINING AGENCY.
4. ALL STANDARD SIGNAL PULL BOXES SHALL BE STAMPED "TRAFFIC SIGNAL" ON THE COVER.
5. PROJECT ADMINISTRATOR TO CONTACT THE DISTRICT FOUR STRUCTURES MAINTENANCE OFFICE FOR A STRUCTURAL INSPECTION BEFORE FINAL ACCEPTANCE. THE CONTRACTOR SHALL PROVIDE A 30 DAY ADVANCE NOTICE TO DISTRICT 4 STRUCTURES MAINTENANCE OFFICE FOR PRECONSTRUCTION MEETING, PRE-ACTIVITY MEETING AND FINAL INSPECTIONS.
6. THE CONTRACTOR SHALL CONTACT THE FDOT PROJECT ADMINISTRATOR FOR ALL SIGNALIZATION INSPECTIONS FROM BROWARD OPERATIONS AT 954-776-4300 AND FDOT PROJECT ADMINISTRATOR FROM PALM BEACH OPERATIONS CENTER AT (561) 370-1262.
7. PRIOR TO BEGINNING CONSTRUCTION, CONTRACTOR SHALL PROVIDE WRITTEN NOTICE OF COMMENCEMENT, VIA E-MAIL, TO TEINSPECTION@BROWARD.ORG. NOTICE SHALL INCLUDE THE DATE OF COMMENCEMENT, LOCATION AND TYPE OF WORK, AND INFORMATION REGARDING ANY MALFUNCTIONING EQUIPMENT.
8. CONTRACTOR SHALL NOT STOCKPILE MATERIAL EAST OF SR A1A.
9. NO NIGHT TIME LIGHTING CAN BE USED DURING TURTLE NESTING SEASON (MARCH TO OCTOBER) UNLESS SUBMITTED AND APPROVED BY THE ENGINEER AND PERMITTING AGENCY.

PAY ITEM NOTES:

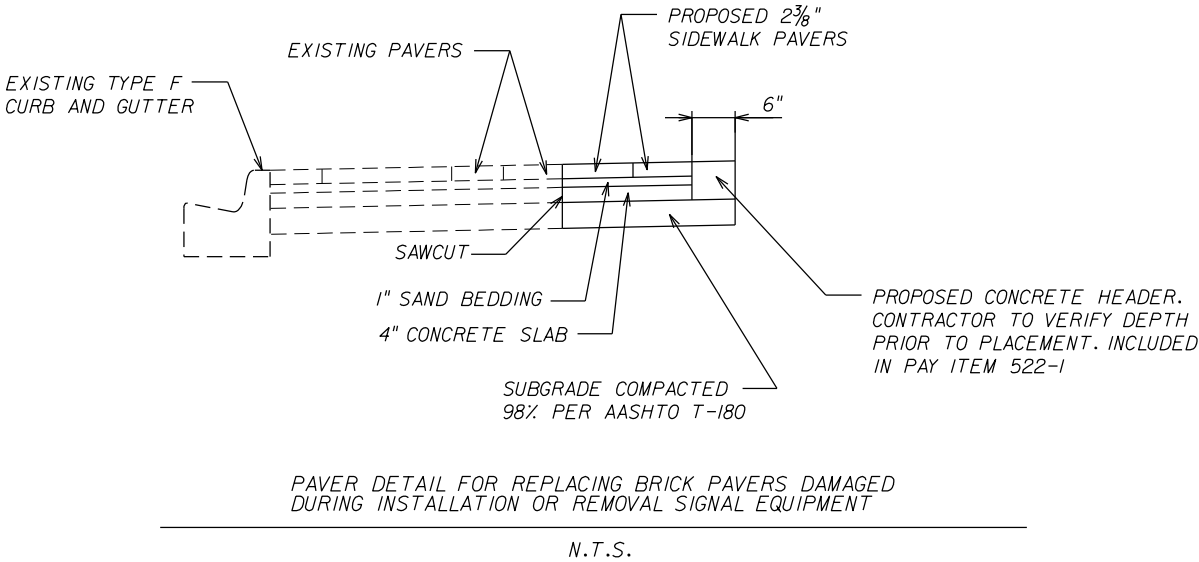
1. 102-60, 102-74-1, 102-76 - TCP ITEMS BASED ON ESTIMATED 45 DAYS TO COMPLETE. TIME DOES NOT INCLUDE INSPECTION AND ACCEPTANCE.
2. 102-99 - TCP ITEMS BASED ON ESTIMATED 59 DAYS TO COMPLETE. TIME DOES NOT INCLUDE INSPECTION AND ACCEPTANCE.
3. 110-4-1 - INCLUDED IN THIS PAY ITEM IS THE SIDEWALK REMOVAL UNDERNEATH THE BRICK PAVERS AND ANY DAMAGED BRICK PAVERS.
4. 522-1 - FOR THE SIDEWALK UNDERNEATH THE BRICK PAVES INSTALLATION.
5. 632-7-6 - CABLING REMOVAL FOR SIGNAL CABLE WITH THE EXCEPTION OF THE SIGNAL CABLE FOR THE PEDESTRIAN SIGNAL IN THE SE QUADRANT. THE SIGNAL CABLE FOR THE PEDESTRIAN SIGNAL IN THE SE QUADRANT IS TO REMAIN.
6. 650-1-14 - A REFLECTIVE BORDER SHALL BE INCLUDED IN ALL BACKPLATES.
7. 649-36-300 - THE CONTRACTOR SHALL DELIVER ALL REMOVED TRAFFIC SIGNAL EQUIPMENT AND GPS EQUIPMENT TO THE BROWARD COUNTY TRAFFIC ENGINEERING DIVISION LOCATED AT: 2300 W. COMMERCIAL BLVD., FT. LAUDERDALE, FL 33309. (954) 847-2626. THE CONTRACTOR SHALL CONTACT BCTED (7) FULL WORKING DAYS PRIOR TO DELIVERY.
8. ALL CONTRACT PAY ITEMS ARE ESTIMATED QUANTITIES. COMPENSATION WILL ONLY BE FOR TASKS, FIELD MEASURED PAY ITEMS, IN PLACE ANDS ACCEPTED.
9. 649-21-109, 649-21-110 - A GIVEN MAST ARM/POLE ASSEMBLY LOCATION SHALL BE FIELD VERIFIED AND IDENTIFIED AS FREE OF CONFLICTS AND/OR OBJECTS BY THE CONTRACTOR PRIOR TO PROCUREMENT OF THE ASSOCIATED TROMBONE MAST ARM/POLE ASSEMBLY. MAST ARMS SHALL BE INSTALLED PERPENDICULAR TO APPROACH.

COMMUNICATIONS NOTES:

1. THE AGENCY RESPONSIBLE FOR MAINTENANCE OF THE TRAFFIC SIGNALS AND RELATED EQUIPMENT IS BROWARD COUNTY TRAFFIC ENGINEERING DIVISION (BCTED). IF FIBER OPTIC PULL BOXES ALREADY EXIST AT AN INTERSECTION, NO ADDITIONAL FIBER OPTIC PULL BOXES WILL NEED TO BE INSTALLED.
2. IF THERE ARE FIBER OPTIC CABLE/S WITHIN YOUR PROJECT LIMITS OR WITHIN 1500 FEET OF YOUR PROJECT LIMITS CONTACT THE COMMUNICATIONS MANAGER AT TECOMMUNICATIONS@BROWARD.ORG OR 954-847-2745.
3. IF THERE ARE CELLULAR COMMUNICATIONS WITHIN YOUR PROJECT LIMITS, CONTACT THE COMMUNICATIONS MANAGER AT TECOMMUNICATIONS@BROWARD.ORG OR 954-847-2745.
4. ALL BCTED COMMUNICATIONS CABLES/CONDUIT SHALL BE LOCATED A MINIMUM OF 48 HOURS IN ADVANCE.

BROWARD COUNTY TRAFFIC ENGINEERING DIVISION
PROCEDURE FOR NOTIFICATION OF COMMUNICATION DISRUPTION

5. FIBER OPTIC CABLE NOTIFICATION CONTACT PERSON
- WHEN COMMUNICATIONS TO AN INTERSECTION MUST BE DISRUPTED BY A CONTRACTOR TO PERFORM WORK, THE CONTRACTOR SHALL PROVIDE TWO DAY ADVANCE NOTICE IN WRITING TO THE BROWARD COUNTY TRAFFIC ENGINEERING DIVISION. THIS NOTIFICATION SHALL BE CONVEYED VIA ELECTRONIC MAIL (EMAIL) TO THE COMMUNICATIONS MANAGER AT TECOMMUNICATIONS@BROWARD.ORG. NOTIFICATION SHALL INCLUDE CONTACT PERSON, TELEPHONE NUMBER, PURPOSE, LOCATION AND DURATION. THE DISRUPTION SHALL LAST FOR NO MORE THAN 3 CONSECUTIVE BUSINESS DAYS. WHERE POSSIBLE, THE DISRUPTION SHALL BE DURING OFF PEAK HOURS BEGINNING AT 9:00AM AND ENDING AT 3:00PM.



REVISIONS				DRMP, INC. 6853 SW 18TH STREET, STE. 310, BOCA RATON, FL 33453 PHONE: (561) 451-8124 FAX: (561) 451-8142 CERTIFICATE OF AUTHORIZATION No. 2648 CHRISTINE DALICKAS, P.E. LICENSE NUMBER 62423	STATE OF FLORIDA DEPARTMENT OF TRANSPORTATION			SHEET NO. 3
DATE	DESCRIPTION	DATE	DESCRIPTION		ROAD NO.	COUNTY	FINANCIAL PROJECT ID	
11-26-18	2 REVISED PAY ITEM NUMBERS				A1A	BROWARD	436219-2-72-01 436219-2-72-04	
9-16-19	3 UPDATED FPID							

GENERAL NOTES

TEMPORARY TRAFFIC CONTROL PLAN:

1. THE CONTRACTOR SHALL NOT PERFORM ANY LANE CLOSURES BETWEEN THE HOURS OF 7 AM TO 9:30 PM DURING THE WEEK.
2. THE WORK ZONE SPEED LIMIT SHALL BE EQUAL TO THE EXISTING SPEED LIMITS (30 MPH) ALONG THE ROADWAY IN WHICH THE CONTRACTOR IS PERFORMING HIS WORK.
3. TRAFFIC CONTROL SHALL BE IN ACCORDANCE WITH FDOT STANDARDS 600, 613 AND 660.
4. PCMS SHALL BE ADDED DURING CONSTRUCTION WHEN DETOURS ARE UTILIZED AND SHALL STATE THE FOLLOWING:

TWO WEEKS PRIOR TO DETOUR:

PCMS MESSAGE 1

SR AIA
CLOSED

PCMS MESSAGE 2

ON
"DATE"

DURING DETOUR:

PCMS MESSAGE 1

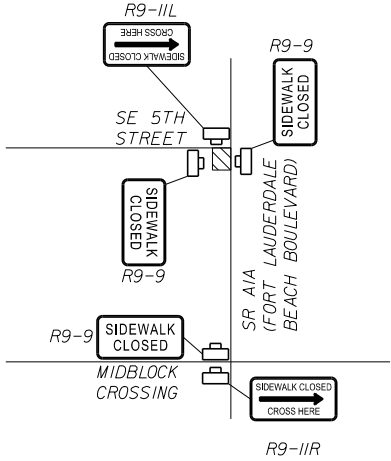
SR AIA
CLOSED
"DATE"

PCMS MESSAGE 2

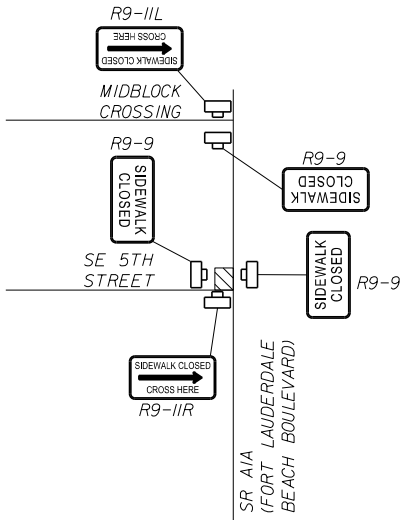
FOLLOW
DETOUR

PEDESTRIAN DETOUR ROUTE FOR WORK AT THE INTERSECTION OF
SR AIA (FORT LAUDERDALE BEACH BOULEVARD) AT SE 5TH STREET

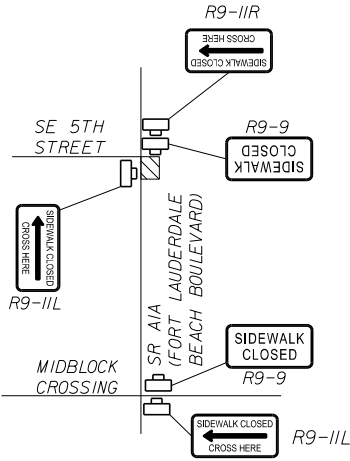
SW QUADRANT OF INTERSECTION:



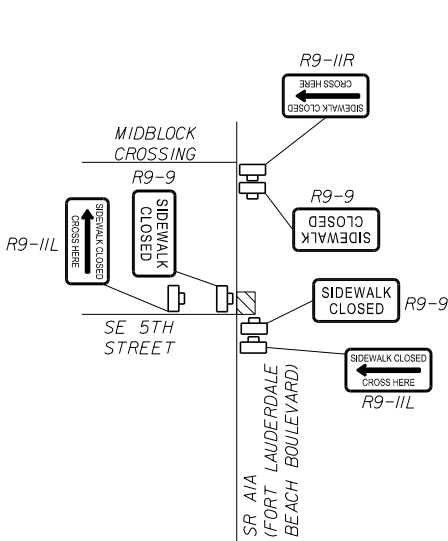
NW QUADRANT OF INTERSECTION:



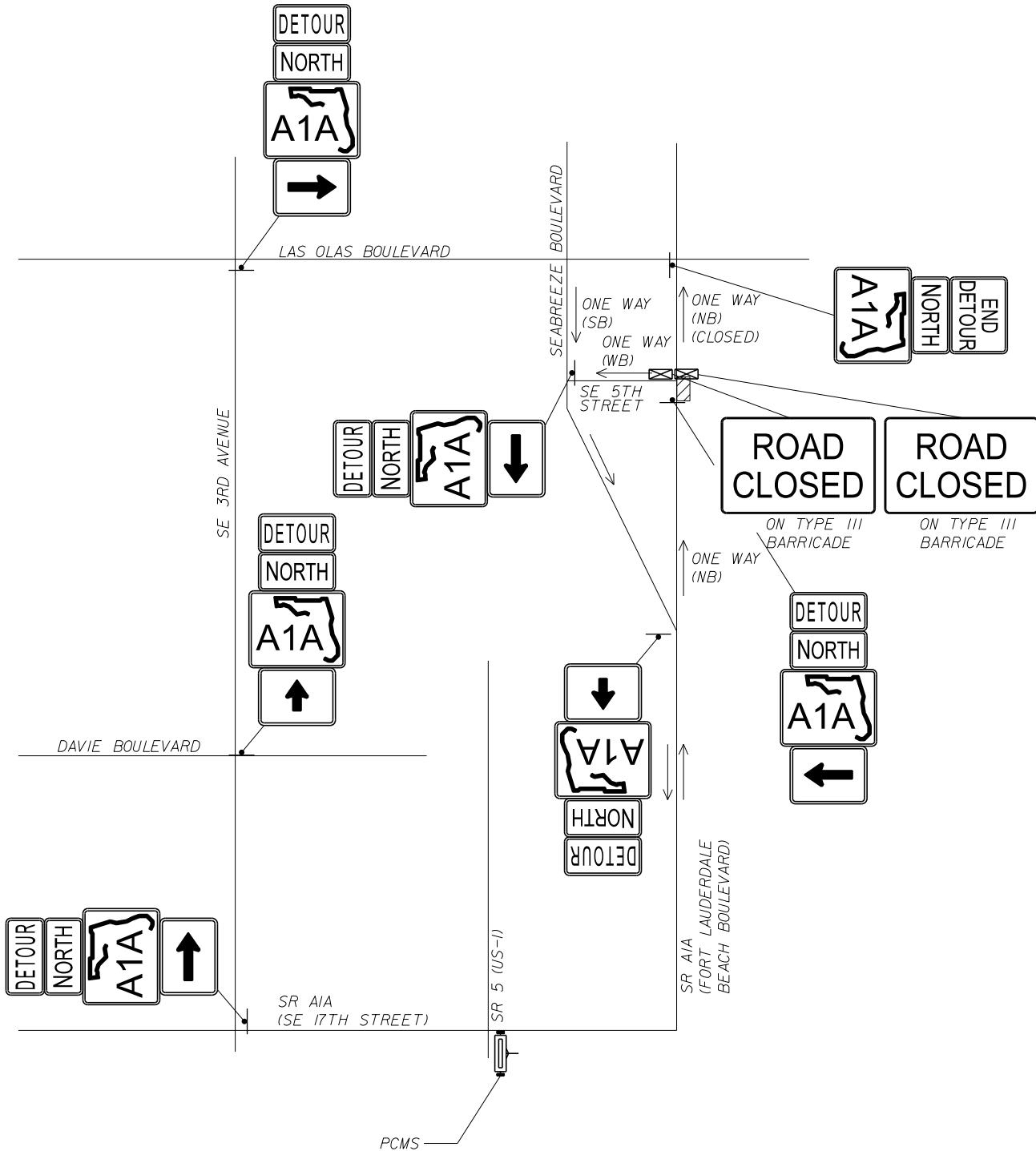
SE QUADRANT OF INTERSECTION:



NE QUADRANT OF INTERSECTION:

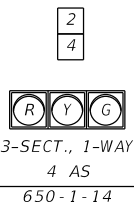


DETOUR ROUTE FOR THE EXISTING MAST ARM REMOVAL AND THE
PROPOSED MAST ARM INSTALLATION WORK AT THE INTERSECTION
OF SR AIA (FORT LAUDERDALE BEACH BOULEVARD) AT SE 5TH STREET

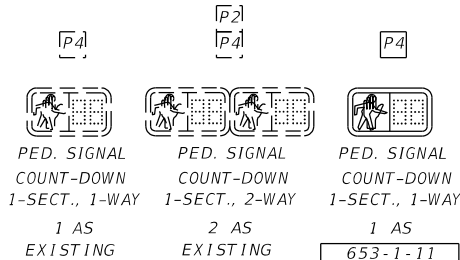


REVISIONS				DRMP, INC. 6853 SW 18TH STREET, STE. 310, BOCA RATON, FL 33455 PHONE: (561) 451-8124 FAX: (561) 451-8142 CERTIFICATE OF AUTHORIZATION No. 2648 CHRISTINE DALICKAS, P.E. LICENSE NUMBER 62423	STATE OF FLORIDA DEPARTMENT OF TRANSPORTATION			TEMPORARY TRAFFIC CONTROL NOTES	SHEET NO. 4
DATE	DESCRIPTION	DATE	DESCRIPTION		ROAD NO.	COUNTY	FINANCIAL PROJECT ID		
9-16-19	3 UPDATED FPID				AIA	BROWARD	436219-2-72-01 436219-2-72-04		

SIGNAL HEAD DETAILS



PEDESTRIAN SIGNAL HEAD DETAILS

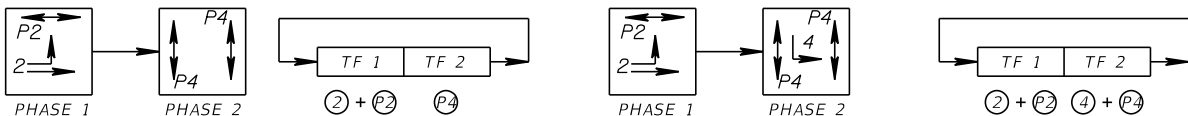


CONTROLLER TIMINGS

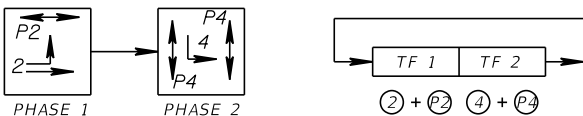
TIMING FUNCTION								
MOVEMENT NUMBER	1	2	3	4	5	6	7	8
DIRECTION		NB		EB				
MINIMUM GREEN		7		10				
EXTENSION								
MAXIMUM GREEN 1		50		21				
MAXIMUM GREEN 2								
YELLOW CLEARANCE		4		3				
ALL RED		2		2				
PEDESTRIAN WALK		7		10				
PED. CLEARANCE		8		11				
RECALL		MAX						

EXISTING PREEMPTION TO REMAIN.
S.O.P TO BE MODIFIED AS SHOWN HEREIN*.

SPECIAL S.O.P. (EXISTING)*



SPECIAL S.O.P. (AFTER 2-WAY PROJECT IS COMPLETED)



* CONTRACTOR IS TO LEAVE THE EXISTING SOP AS IS UNTIL THE CITY OF FT. LAUDERDALE'S SE 5TH STREET TWO-WAY PROJECT IS COMPLETED.

SIGN DETAILS

SE 5 ST
LEAVITT DR/HALL OF FAME DR

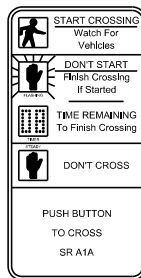
SIGN A

EXISTING SIGN
TO BE RELOCATED
700-5-50 1 EA

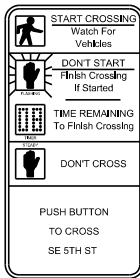
S400 SR A1A
Fort Lauderdale Bch Blvd

SIGN B

SEE SHEET 7
FOR DETAILS
700-5-22 1 EA



SIGN C
FTP 68B-06
9' X 18"



SIGN D
FTP 68B-06
9' X 18"

NOTES:

- CONTRACTOR SHALL REMOVE AND RE-INSTALL ANY EXISTING SIDEWALK PAVERS FOUND ON SITE FOR THE INSTALLATION OF THE PROPOSED TROMBONE MAST ARMS AND TRAFFIC EQUIPMENT. CONTRACTOR SHALL REPLACE BRICK PAVERS DAMAGED DURING INSTALLATION OF TROMBONE MAST ARM FOUNDATIONS AND SIGNAL EQUIPMENT, INCLUDED IN PAY ITEM 526-1-2. CONTRACTOR SHALL USE DUE CARE WHEN REMOVING EXISTING SIDEWALK PAVERS TO MINIMIZE DAMAGE TO SAID SIDEWALK PAVERS.
- CONTRACTOR SHALL PROTECT PAVERS WITHIN THE ROADWAY INTERSECTION FROM DAMAGE.
- MAST ARM FOUNDATIONS ARE TO BE FLUSH WITH BRICK PAVERS.
- CONTRACTOR SHALL ENTER CONTROLLER THROUGH EXISTING SIGNAL CONDUIT SWEEPS FROM THE EXISTING PULL BOXES.
- PAY ITEM 670-5-400 INCLUDES THE MODIFICATION OF THE EXISTING CONTROLLER TO ACCOMMODATE THE PROPOSED S.O.P. AND FOR THE PROPOSED VIDEO DETECTION.
- CONTRACTOR TO CONTACT CITY OF FORT LAUDERDALE ABOUT TRASH RECEPTACLE RELOCATION AT 954-828-8000.

REVISIONS

DATE	DESCRIPTION	DATE	DESCRIPTION
11-26-18	REVISED PAY ITEM NUMBER		
9-16-19	UPDATED FPID AND ADDED PAINT PAY ITEM NUMBER		

DRMP, INC.

6853 SW 18TH STREET, STE. 310, BOCA RATON, FL 33453
PHONE: (561) 451-8124 FAX: (561) 451-8142
CERTIFICATE OF AUTHORIZATION No. 2648
CHRISTINE DALICKAS, P.E.
LICENSE NUMBER 62423

STATE OF FLORIDA

DEPARTMENT OF TRANSPORTATION

ROAD NO.	COUNTY	FINANCIAL PROJECT ID
A1A	BROWARD	436219-2-72-01 436219-2-72-04

SIGNALIZATION PLAN

SHEET NO.

5

EXISTING SERVICE POINT

BCTEDCO (ABANDONED)

SR A1A
(FORT LAUDERDALE
BEACH BOULEVARD)

SE 5TH STREET

0 5 20
Feet

INSTALL PULL BOX
TO INTERCEPT THE
EXISTING SIGNAL CONDUIT
FROM THE CONTROLLER CABINET
TO THE PROPOSED PULL BOX

635-2-11 1 EA

EXISTING TRAFFIC
CONTROLLER
TO REMAIN

632-7-1 1 PI
660-4-11 1 EA
670-5-400 1 AS

EXISTING TRAFFIC
PULL BOXES TO
REMAIN

SURVEY SR A1A
157

3 RUNS
(1 SIGNAL, 2 SPARE)
630-2-12 43 LF

660-4-12 1 EA

SIGN B

3 RUNS
(1 SIGNAL, 2 SPARE)
526-1-2 20 SY
630-2-12 82 LF

SIGN A

INTERCEPT EXISTING
LIGHTING CONDUIT
AND PLACE PROPOSED
PULL BOX AS SHOWN
HEREIN

522-1 2 SY
526-1-2 2 SY
635-2-11 1 EA

EXISTING ABANDONED
DRILLED SHAFT
TO REMAIN

R/W LINE

RUN CONDUIT TO
EXISTING PULL
BOX

1 EL 9.10
POLE LOCATION =
STA. 156+68.28
OFFSET 17.38' RT

2 #2
1 #2 GRN
630-2-12 105 LF
635-2-11 1 EA
715-1-13 3 RUNS @ 105 LF

522-1 3 SY
526-1-2 3 SY
635-2-11 3 EA
649-21-110 1 EA
649-21-999A 1 LS

POLE A
STA. 157+33.04
OFFSET 16.04' RT

522-1 3 SY
526-1-2 3 SY
630-2-11 10 LF
635-2-11 1 EA
646-1-11 1 EA
665-1-11 1 EA
SEE SIGN C

REMOVE EXISTING
TROMBONE MAST
ARM ASSEMBLY

649-36-300 1 EA

INTERCEPT EXISTING
LIGHTING CONDUIT
AND PLACE PROPOSED
PULL BOX AS SHOWN
HEREIN

522-1 2 SY
526-1-2 2 SY
635-2-11 1 EA

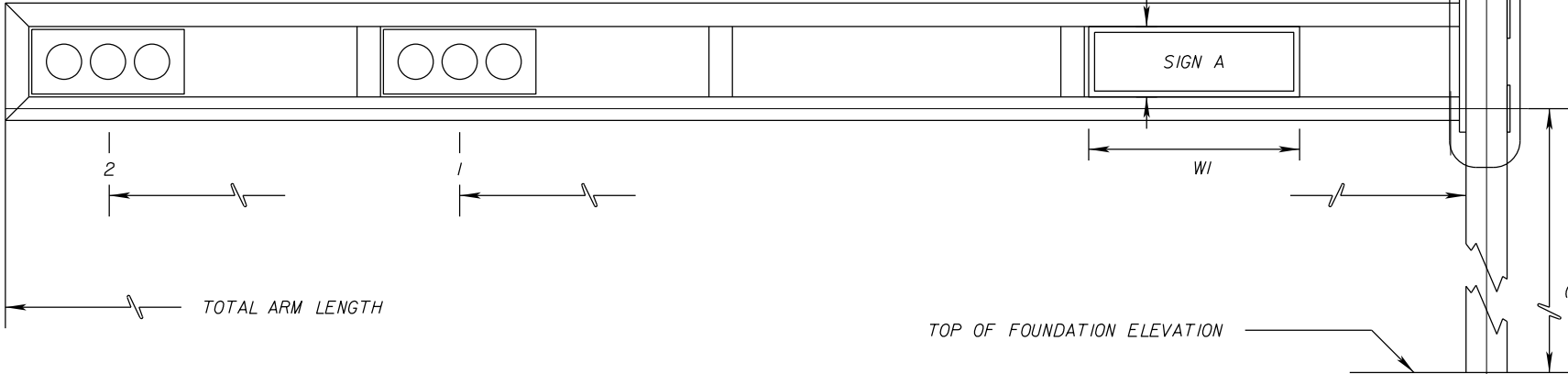
2 EL 8.90
POLE LOCATION =
STA. 157+57.67
OFFSET 17.55' RT

522-1 3 SY
526-1-2 3 SY
635-2-11 4 EA
649-21-109 1 EA
649-21-999A 1 LS

SEE NOTE 6

THE OFFICIAL RECORD OF THIS SHEET IS THE ELECTRONIC FILE DIGITALLY SIGNED AND SEALED UNDER RULE 61G15-23.004, F.A.C.

FOR INFORMATION PURPOSES ONLY
NOT FOR CONSTRUCTION



* DENOTES NUMBER OF SECTIONS IN SIGNAL HEAD ASSEMBLY

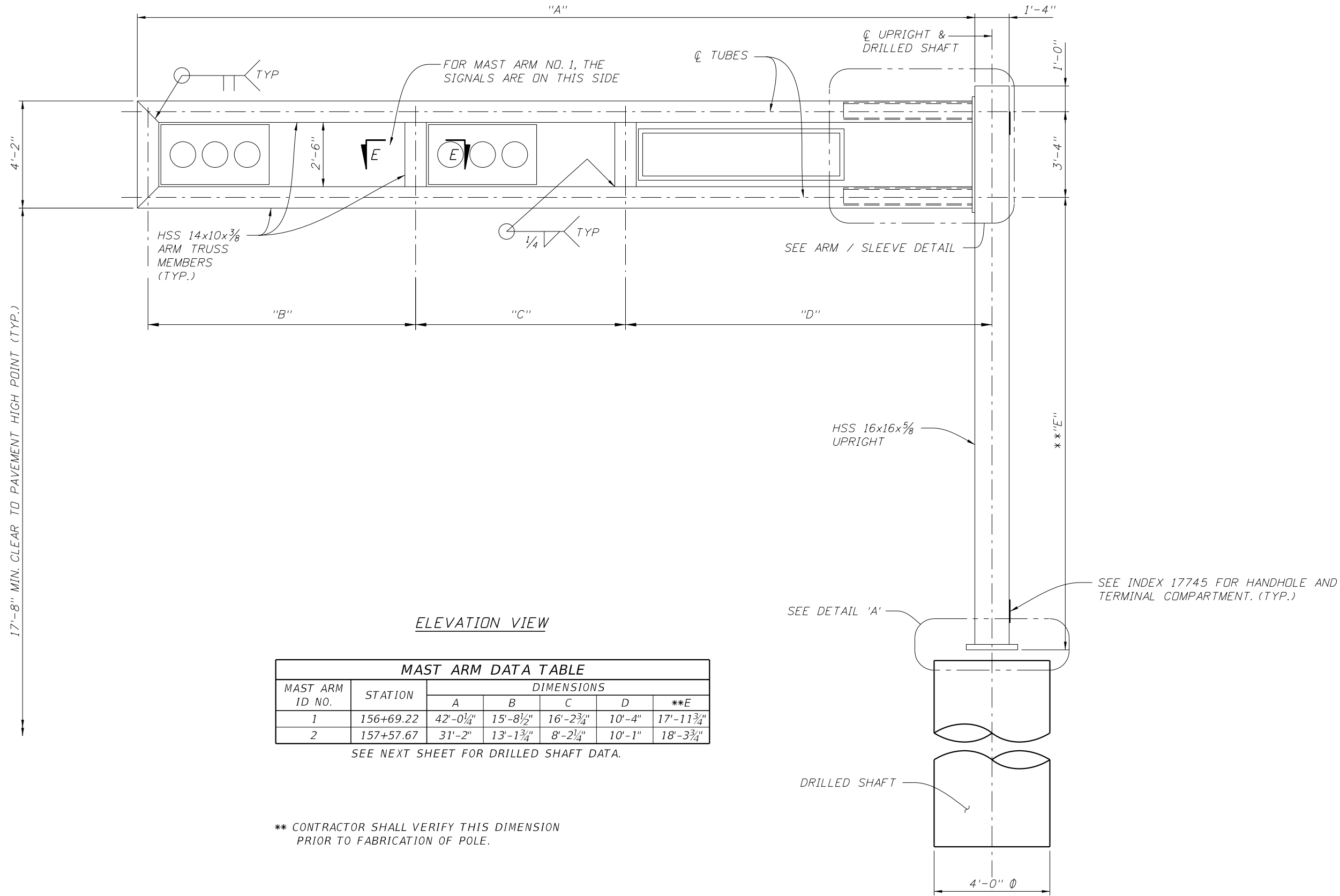
**** SEE SHEET 8 FOR ARM MOUNTING HEIGHT AND TOTAL ARM LENGTH.**

ID NO.	SHEET NO.	LOCATION BY STA.	TOP OF FOUNDATION ELEVATION	RDWY ARM NO.	CROWN ELEV.	SIGNAL V/H	BACK PLATES Y/N	PED. SIGNAL Y/N	DISTANCE FROM POLE										TOTAL ARM LENGTH	ARM M.H.	∠ BETWEEN DUAL ARMS 90/270	DISTANCE FROM POLE / HEIGHT AND WIDTH OF SIGN															PAINT COLOR
									1	*	2	*	3	*	4	*	CAMERA	*				A	H1	W1	B	H2	W2	C	H3	W3	D	H4	W4	E	H5	W5	
1	5	156+69.22	9.10	1	9.00	H	Y	N	28.5'	3	39'	3				35.5'	**	**		5'	2	8.5	33.5'	3	2.5									SOLAR BLACK			
				2																													SOLAR BLACK				
2	5	157+57.67	8.90	1	9.13	H	Y	N	15'	3	25'	3				20'	**	**		5'	2	8	29'	2.5	2.5												
				2																																	
				1																																	
				2																																	
				1																																	
				2																																	
				1																																	
				2																																	
				1																																	
				2																																	
				1																																	
				2																																	
				1																																	
				2																																	
				1																																	
				2																																	
				1																																	
				2																																	
				1																																	
				2																																	
				1																																	
				2																																	
				1																																	
				2																																	
				1																																	
				2																																	
				1																																	
				2																																	
				1																																	
				2																																	
				1																																	
				2																																	
				1																																	
				2																																	
				1																																	
				2																																	

** SEE SHEETS 10 THRU 12 FOR ARM MOUNTING HEIGHT AND TOTAL ARM LENGTH.



R E V I S I O N S				DRMP, INC. 6853 SW 18TH STREET, STE. 310, BOCA RATON, FL 33453 PHONE: (561) 451-8124 FAX: (561) 451-8142 CERTIFICATE OF AUTHORIZATION No. 2648 CHRISTINE DALICKAS, P.E. LICENSE NUMBER 62423	STATE OF FLORIDA DEPARTMENT OF TRANSPORTATION			<div>3</div> ULTIMATE LOADING	SHEET NO.
DATE	DESCRIPTION	DATE	DESCRIPTION		ROAD NO.	COUNTY	FINANCIAL PROJECT ID		
9-16-19	<div>3</div> UPDATED FPID AND PAINT COLOR				A/A	BROWARD	<div>436219-2-72-01</div> <div>436219-2-72-04</div>		

THE OFFICIAL RECORD OF THIS SHEET IS THE ELECTRONIC FILE DIGITALLY SIGNED AND SEALED UNDER RULE 61G15-23.004, F.A.C.



NOTE

1. FOR DRILLED SHAFT DETAILS, SEE "MAST ARM DETAILS (1 OF 2)" SHEET.

REVISIONS				DRMP, INC. 941 LAKE BALDWIN LANE, ORLANDO, FL 32814 PHONE: (407) 896-0594 FAX: (407) 896-4856 CERTIFICATE OF AUTHORIZATION No. 2648 JOCELYN M.HAISCH-LINN LICENSE No. 60103	STATE OF FLORIDA DEPARTMENT OF TRANSPORTATION			MAST ARM ELEVATION	SHEET NO.
DATE	DESCRIPTION	DATE	DESCRIPTION		ROAD NO.	COUNTY	FINANCIAL PROJECT ID		9
09/16/19	JMHL  UPDATED FPID				A1A	BROWARD	<div><div>436219-2-72-01</div><div>436219-2-72-04</div></div>		

12-0007.039

Plotted By: ewermuth 9/16/2019

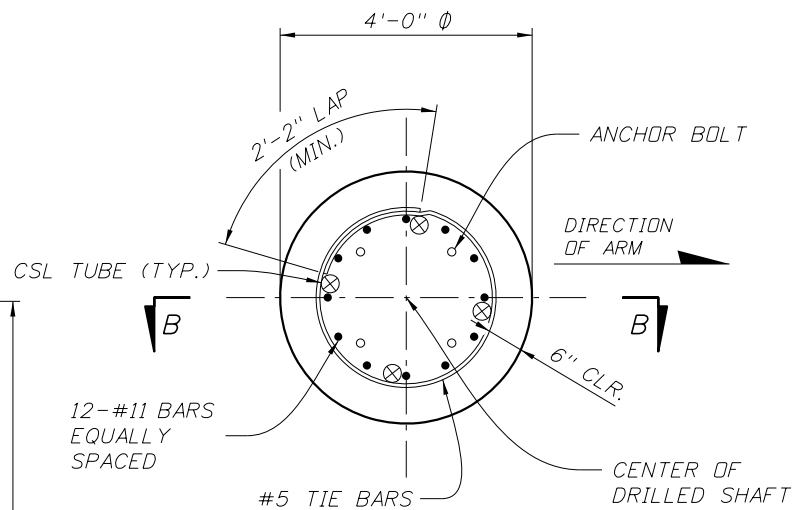
1:17:16 PM

T:\17-0104_008_SR_A1A_at_SE_5th_Street\43621927201\struct\MiscStrMastarm01.DGN

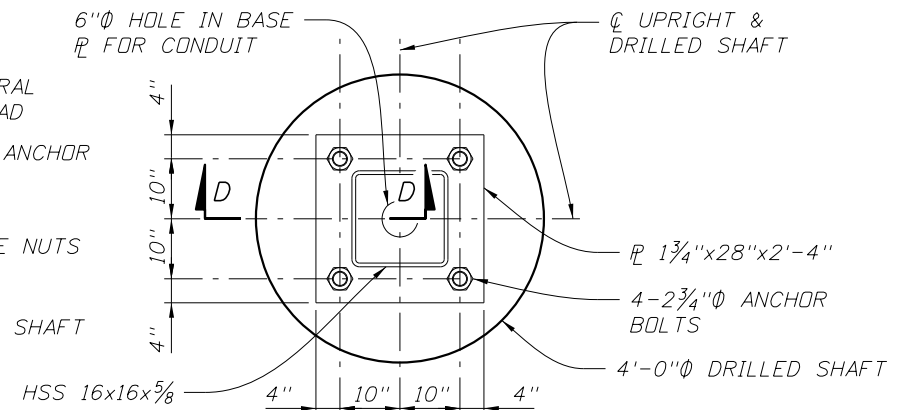
1. DESIGN BASED ON BORINGS TAKEN ON 2/26/18 & 2/27/18
AND SEALED BY HR ENGINEERING SERVICES, INC.

2. ASSUMPTIONS AND VALUES USED IN DESIGN:

- SOIL TYPE SAND
- SOIL LAYER THICKNESS = 16.0 ft.
- SOIL FRICTION ANGLE = 32 deg.
- SOIL WEIGHT = 49 pcf
- DESIGN WATER TABLE IS AT GROUND SURFACE
- AVERAGE SPT N-VALUE = 18



NOTE: 6" MIN. COVER ON SHAFT REINFORCEMENT.





(REINFORCING STEEL NOT SHOWN FOR CLARITY)

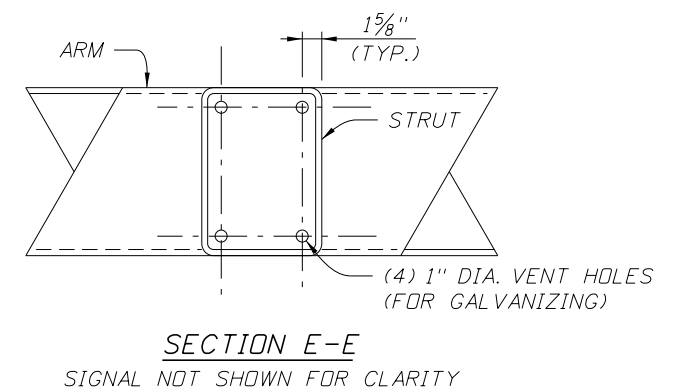
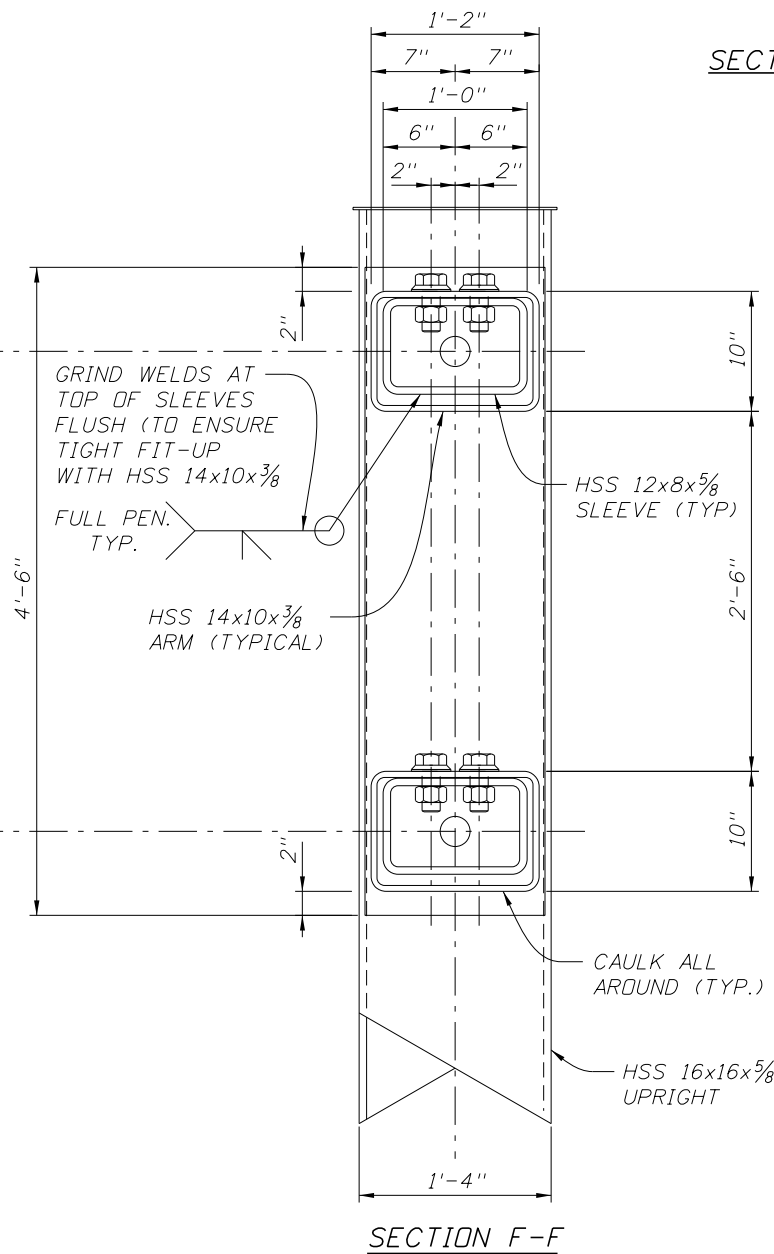
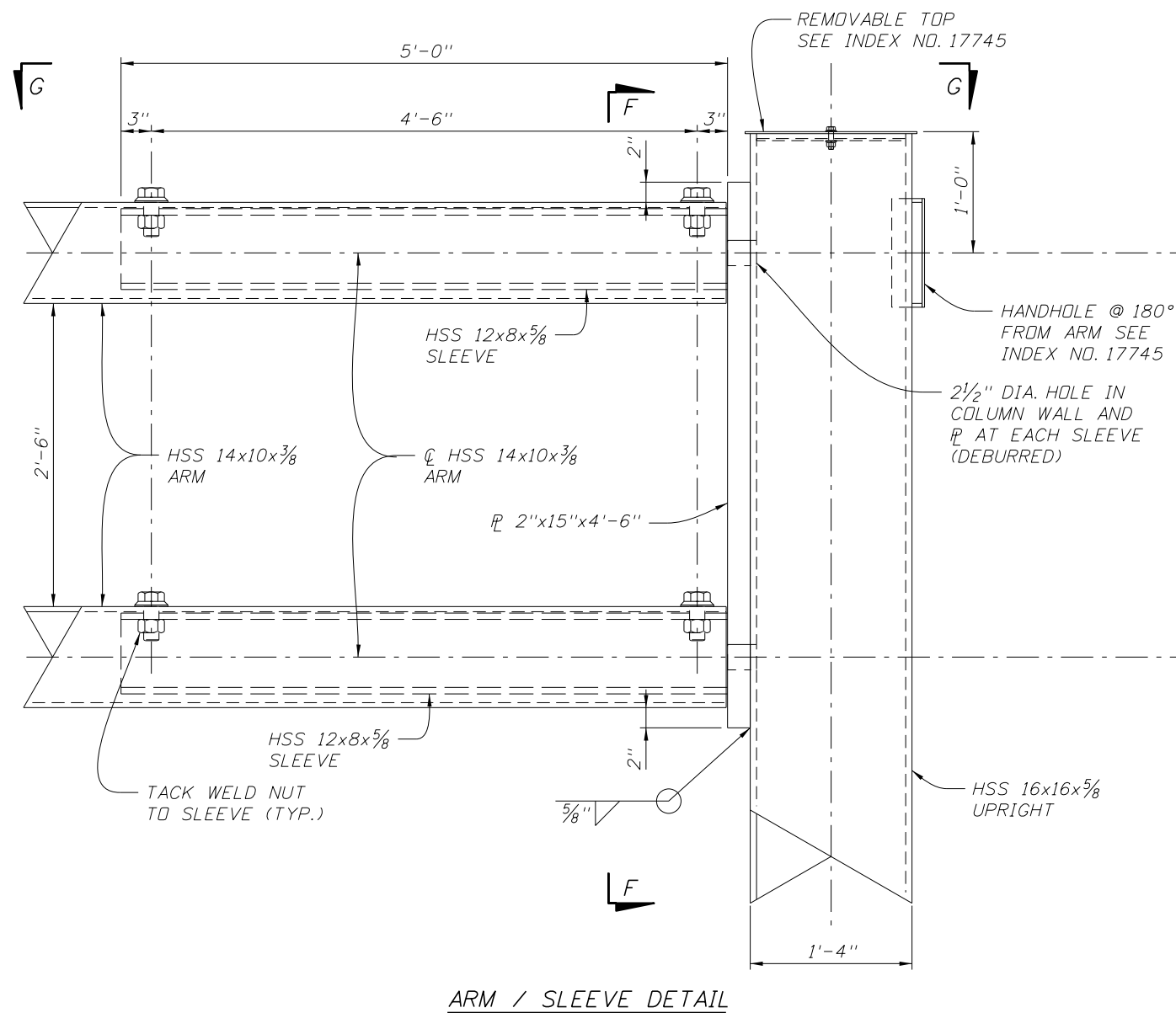
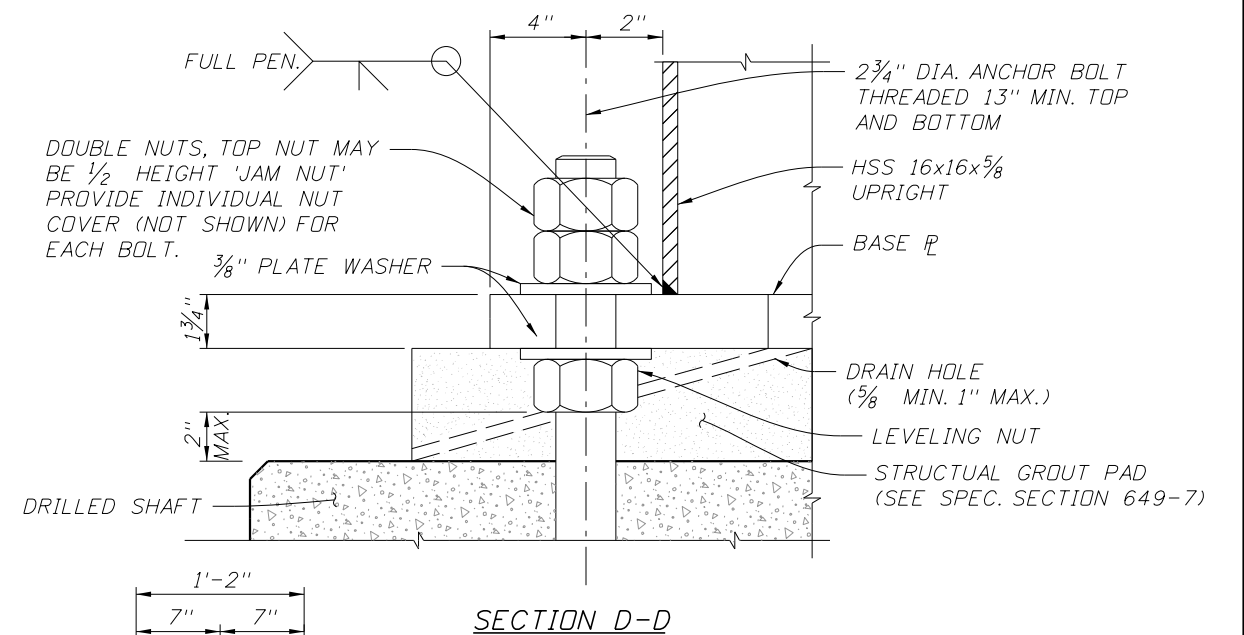
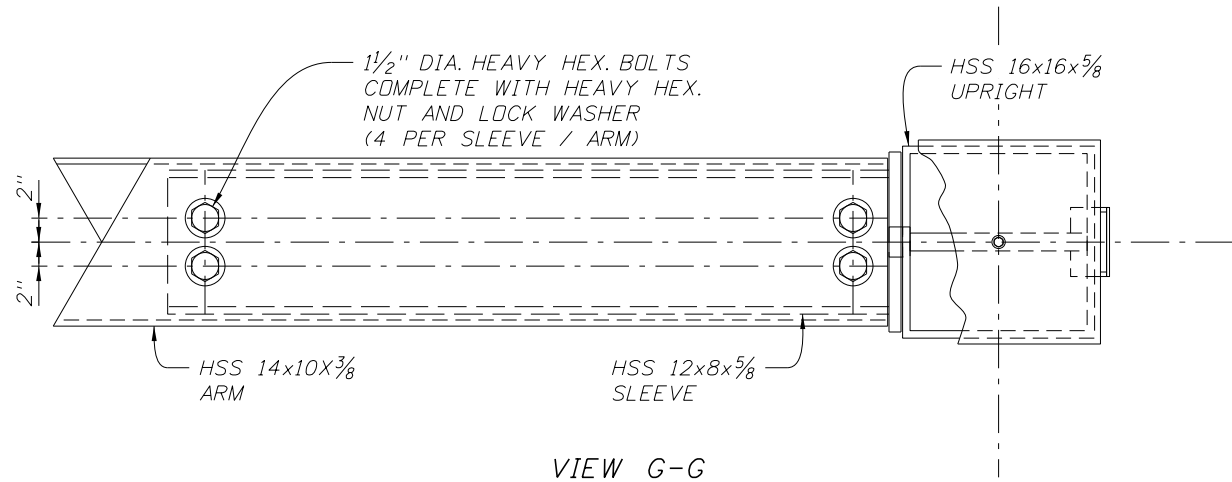
(REINFORCING STEEL NOT SHOWN FOR CLARITY)

1. SIGNAL STRUCTURE MATERIALS SHALL BE AS FOLLOWS:

- | | |
|-----------------------------|---|
| UPRIGHT & ARM TRUSS | -> ASTM A500 GRADE 50 |
| STEEL PLATES | -> ASTM A36 |
| WELD METAL | -> E70XX |
| BOLTS (EXCEPT ANCHOR BOLTS) | -> ASTM A325 TYPE 1 |
| ANCHOR BOLTS | -> ASTM F1554 GRADE 55 ksi |
| NUTS FOR ANCHOR BOLTS | -> ASTM A563 GRADE A HEAVY HEX |
| WASHERS FOR ANCHOR BOLTS | -> ASTM F436 TYPE 1 |
| HANDHOLE FRAME | -> ASTM A709 GRADE 36 ksi
OR ASTM A36 |
| HANDHOLE COVER | -> ASTM A1011 GRADE 50, 55, 60, OR 65 ksi |
| CAPS | -> ASTM A1011 GRADE 50, 55, 60, OR 65 ksi
OR ASTM B209 |
| NUT COVERS | -> ASTM B26 (319-F) |
| STAINLESS STEEL SCREWS | -> AISI TYPE 316 |
| THREADED BARS / STUDS | -> ASTM A36 OR ASTM A307 |
2. REINFORCING STEEL SHALL BE ASTM A615 GRADE 60 KSI.
 3. CONCRETE SHALL BE CLASS IV (DRILLED SHAFT) WITH A MINIMUM 28-DAY COMPRESSIVE STRENGTH OF 4,000 psi FOR ALL ENVIRONMENTAL CLASSIFICATIONS.
 4. NOT USED.
 5. ALL WELDING SHALL CONFORM TO AMERICAN WELDING SOCIETY STRUCTURAL WELDING CODE (STEEL) ANSI/AWS D1.1 (CURRENT EDITION).
 6. ALL NUTS, BOLTS, WASHERS, AND THREADED BARS/STUDS SHALL BE GALVANIZED IN ACCORDANCE WITH F2329. ALL OTHER STEEL ITEMS (INCLUDING UPRIGHT AND ARM) SHALL BE GALVANIZED IN ACCORDANCE WITH ASTM A123.

7. LOCATE HANDHOLE 180° FROM ARM TRUSS.
8. EXCEPT FOR ANCHOR BOLTS, ALL BOLT HOLE DIAMETERS SHALL BE EQUAL TO THE BOLT DIAMETER PLUS $\frac{1}{16}$ ", HOLE DIAMETERS FOR ANCHOR BOLTS SHALL NOT EXCEED THE BOLT DIAMETER PLUS $\frac{1}{2}$ ".
9. SIGN PANEL AND SIGNALS ATTACHED TO THE ARM TRUSS SHALL BE CENTERED IN ELEVATION ON THE ARM TRUSS. SIGN PANELS SHALL BE INTERNALLY ILLUMINATED. WIRE ACCESS HOLES SHALL NOT EXCEED $1\frac{1}{2}$ " IN DIAMETER EXCEPT AS NOTED. MOUNTING HARDWARE FOR SIGNALS AND SIGN PANEL SHALL BE PROVIDED BY THE VENDORS.
10. THE POLE SHALL BE INSTALLED VERTICALLY. CAMBER SHALL BE ACCOUNTED FOR IN THE MAST ARM CONNECTION AS DETAILED.
11. DESIGN ACCORDING TO FDOT STRUCTURES MANUAL, JANUARY 2016 EDITION. ALTERNATE DESIGNS FOR SPECIAL MAST ARM ASSEMBLIES ARE NOT ALLOWED.
12. PROVIDE "J", "S", OR "C" - HOOK AT TOP OF POLE FOR SIGNAL CABLE SUPPORT.
13. ARM TRUSS CAMBER ANGLE = 0.5°
14. DETAILS FOR THE GROUND ROD, SIGNAL HEAD ATTACHMENT, SIGN ATTACHMENT, AND FOUNDATION CONDUIT ARE NOT SHOWN FOR CLARITY.
15. SEE INDEX 17745 FOR WELD INSPECTION NOTE.
16. SUBMIT SHOP DRAWINGS FOR REVIEW. INCLUDE VENDOR PROVIDED HARDWARE FOR MOUNTING TRAFFIC SIGNALS AND SIGNS.

REVISIONS				DRMP, INC. 941 LAKE BALDWIN LANE, ORLANDO, FL 32814 PHONE: (407) 896-0594 FAX: (407) 896-4856 CERTIFICATE OF AUTHORIZATION No. 2648 JOCELYN M.HAISCH-LINN LICENSE No. 60103	STATE OF FLORIDA DEPARTMENT OF TRANSPORTATION			MAST ARM DETAILS (1 OF 2)	SHEET NO.
DATE	DESCRIPTION	DATE	DESCRIPTION		ROAD NO.	COUNTY	FINANCIAL PROJECT ID		10
09/16/19	JMHL  UPDATED FPD				A1A	BROWARD	 436219-2-72-01 436219-2-72-04		



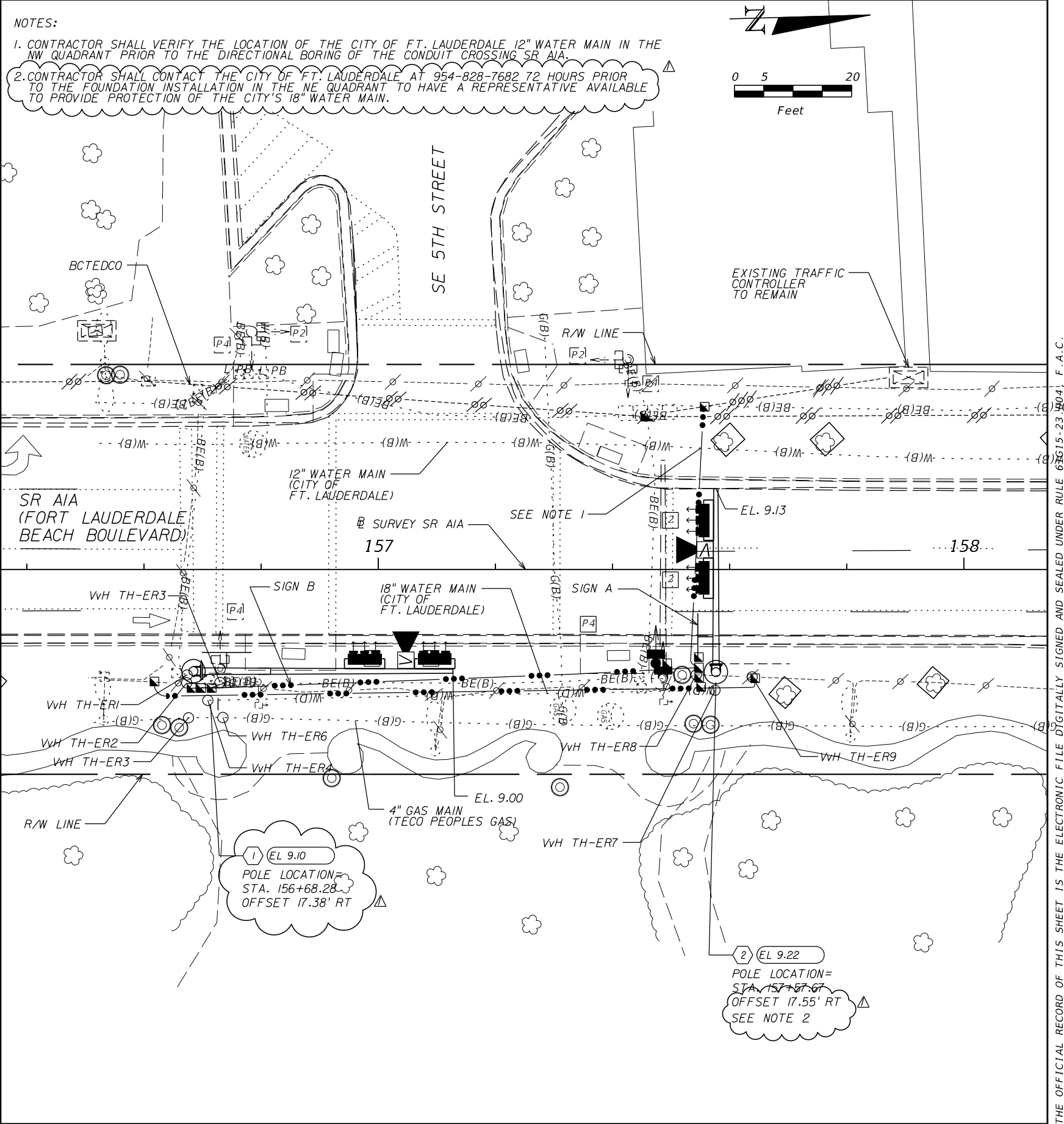
REVISIONS				DRMP, INC. 941 LAKE BALDWIN LANE, ORLANDO, FL 32814 PHONE: (407) 896-0594 FAX: (407) 896-4856 CERTIFICATE OF AUTHORIZATION No. 2648 JOCELYN M.HAISCH-LINN LICENSE No. 60103	STATE OF FLORIDA DEPARTMENT OF TRANSPORTATION			MAST ARM DETAILS (2 OF 2)	SHEET NO.
DATE	DESCRIPTION	DATE	DESCRIPTION		ROAD NO.	COUNTY	FINANCIAL PROJECT ID		
09/16/19	JMHL Δ UPDATED FPID				A1A	BROWARD	436219-2-72-01 436219-2-72-04		11

12-0007.039

Plotted By: ewermuth 9/16/2019 1:15:45 PM

T:\17-0104_008_SR_A1A_at_SE_5th_Street\43621927201\struct\MiscStrMastarm03.DGN

THE OFFICIAL RECORD OF THIS SHEET IS THE ELECTRONIC FILE DIGITALLY SIGNED AND SEALED UNDER RULE 61G15-23.004, F.A.C.



REVISIONS				DRMP, INC. 6855 SW 18TH STREET, STE. 310, BOCA RATON, FL 33453 PHONE: (561) 451-8124 FAX: (561) 451-8142 CERTIFICATE OF AUTHORIZATION No. 2648 CHRISTINE DALICKAS, P.E. LICENSE NUMBER 62423	STATE OF FLORIDA DEPARTMENT OF TRANSPORTATION			UTILITY LOCATION PLAN	SHEET NO. 12
DATE	DESCRIPTION	DATE	DESCRIPTION		ROAD NO.	COUNTY	FINANCIAL PROJECT ID		
10-16-18	△ ADDED NOTE 2 AND REVISED CALLOUTS				AIA	BROWARD	436219-2-72-01 436219-2-72-04		
9-16-19	△ UPDATED FPID								

THE OFFICIAL RECORD OF THIS SHEET IS THE ELECTRONIC FILE DIGITALLY SIGNED AND SEALED UNDER RULE 63G15-23.004, F.A.C.

VERIFIED UTILITY LOCATE

[illegible]

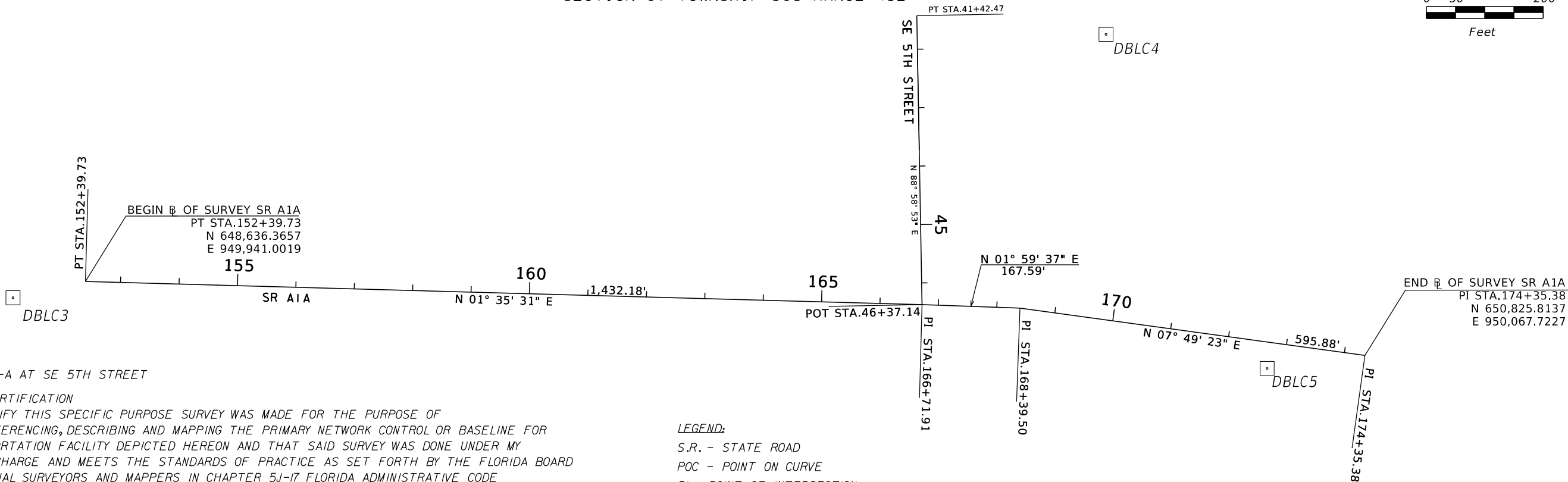
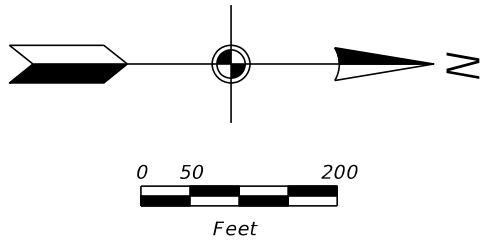
REVISIONS				SAMUEL T. HALL, PSM SURVEYOR LICENSE NUMBER 6644 WANTMAN GROUP, INC. 2035 VISTA PARKWAY, SUITE 100 WEST PALM BEACH, FL 33411 CERTIFICATE OF AUTHORIZATION No. 7055	STATE OF FLORIDA DEPARTMENT OF TRANSPORTATION			VERIFIED UTILITY LOCATE	SHEET NO.
DATE	DESCRIPTION	DATE	DESCRIPTION		ROAD NO.	COUNTY	FINANCIAL PROJECT ID		UTV-1
					A1A	BROWARD	436219-2-52-01		

THE OFFICIAL RECORD OF THIS SHEET IS THE ELECTRONIC FILE DIGITALLY SIGNED AND SEALED UNDER RULE 5J-17.062, F.A.C.

PROJECT CONTROL POINTS

OF SURVEY SR A1A

SECTION 07 TOWNSHIP 50S RANGE 43E



LIMITS: SR A-1-A AT SE 5TH STREET

SURVEYOR'S CERTIFICATION
I HEREBY CERTIFY THIS SPECIFIC PURPOSE SURVEY WAS MADE FOR THE PURPOSE OF SURVEYING, REFERENCING, DESCRIBING AND MAPPING THE PRIMARY NETWORK CONTROL OR BASELINE FOR THE TRANSPORTATION FACILITY DEPICTED HEREON AND THAT SAID SURVEY WAS DONE UNDER MY RESPONSIBLE CHARGE AND MEETS THE STANDARDS OF PRACTICE AS SET FORTH BY THE FLORIDA BOARD OF PROFESSIONAL SURVEYORS AND MAPPERS IN CHAPTER 5J-17 FLORIDA ADMINISTRATIVE CODE PURSUANT TO SECTION 472.027 FLORIDA STATUTES. THIS MAP CONSISTING OF SHEET CTL-1 IS A TRUE, ACCURATE AND COMPLETE DEPICTION OF THE RESULTS OF A FIELD SURVEY PERFORMED UNDER MY DIRECTION AND COMPLETED ON NOVEMBER 29 ,2017

SURVEYOR Paul E. Doll PSM NUMBER 6726

BASELINE AND DBLC3, DBLC4 AND DBLC5 TAKEN FROM PNC SHEET FM# 430601-1-52-01.
BEARINGS AND COORDINATES ARE RELATIVE TO THE STATE PLANE COORDINATES, FLORIDA EAST ZONE, NORTH AMERICAN DATUM (NAD) OF 83/90 ADJUSTMENT
A BEARING OF N 03° 13' 26.7" E HAS BEEN ESTABLISHED BETWEEN DBLC3 STAMPED C3 AND DBLC5 STAMPED C5.
VERTICAL DATUM N.A.V.D. 1988
PROJECT UNITS U.S. SURVEY FEET
BASELINE OF SURVEY IS NOT STAKED IN THE FIELD.
ELECTRONIC DATABASE: 6512.ZIP

- LEGEND:
- S.R. - STATE ROAD
 - POC - POINT ON CURVE
 - PI - POINT OF INTERSECTION
 - PT - POINT OF TANGENCY
 - FND - FOUND
 - STMD - STAMPED DISK
 - POT - POINT ON TANGENT
 - Δ - CURVE DELTA ANGLE
 - D - DEGREE
 - T - TANGENT
 - R - RADIUS
 - L - LENGTH OF CURVE
 - STA - STATION
 - RT - RIGHT
 - LT - LEFT
 - - BRASS DISK IN CONCRETE

PROJECT NETWORK CONTROL TABULATION SHEET DETAILS

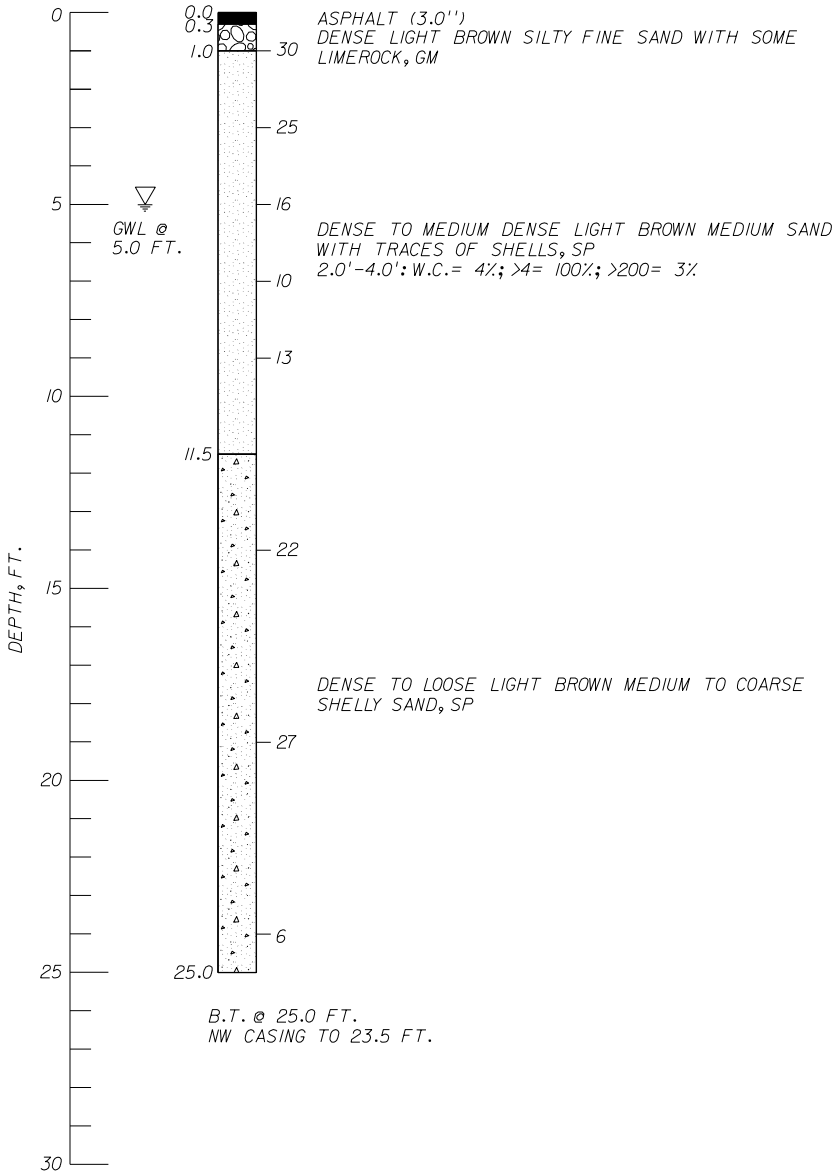
POINT NAME	(X) EASTING	(Y) NORTHING	SCALE FACTOR	LATITUDE	LONGITUDE	BASELINE STATION	OFFSET	(Z) ELEVATION	DESCRIPTION
DBLC3	949,969.0021	648,512.5683	1.00004015	26°06'54.13738	80°06'16.69477	151+24.67	RT 43.74'	10.49'	BRASS DISK IN CONCRETE STAMPED A1A-86 12 C3
DBLC4	949,518.2793	650,382.9317	1.00003985	26°07'12.69112	80°06'21.49825	169+21.83	LT 484.05'	5.51'	BRASS DISK IN CONCRETE STAMPED A1A-86 12 C4
DBLC5	950,089.8869	650,658.5741	1.00004024	26°07'15.38246	80°06'15.20667	172+72.71	RT 44.72'	9.61'	BRASS DISK IN CONCRETE STAMPED A1A-86 12 C5

REVISIONS						Paul E. Doll P.S.M. SURVEYOR LICENSE NUMBER 6726 Florida Department of Transportation 3400 W. Commercial Blvd. Ft. Lauderdale, Fl. 33309	STATE OF FLORIDA DEPARTMENT OF TRANSPORTATION			PROJECT CONTROL	SHEET NO.
DATE	BY	DESCRIPTION	DATE	BY	DESCRIPTION		ROAD NO.	COUNTY	FINANCIAL PROJECT ID		
							SR A1A	BROWARD	436219-2-72-01		CTL-1

MA-1

LATITUDE: 26.11652°
LONGITUDE: -80.10467°
STATION: 156+55
OFFSET: 2 RT
DATE: 02/27/18

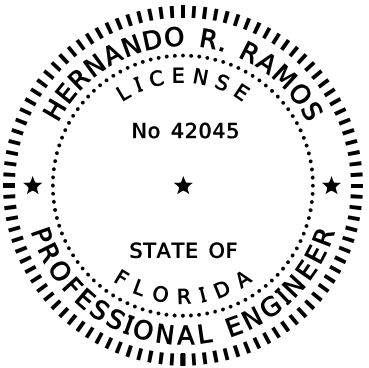
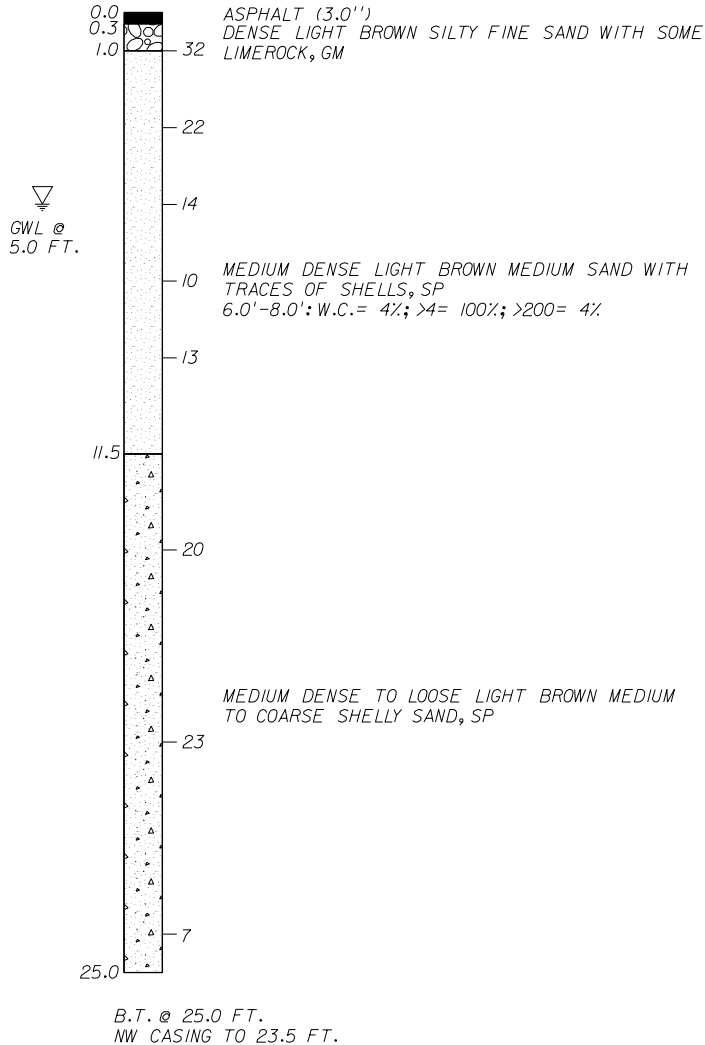
DEPTH, FT. N



MA-2

LATITUDE: 26.11679°
LONGITUDE: -80.10465°
STATION: 157+55
OFFSET: 5 RT
DATE: 02/26/18

DEPTH, FT. N



THIS ITEM HAS BEEN DIGITALLY
SIGNED AND SEALED BY

ON THE DATE ADJACENT TO THE SEAL

PRINTED COPIES OF THIS DOCUMENT ARE
NOT CONSIDERED SIGNED AND SEALED
AND THE SIGNATURE MUST BE VERIFIED
ON THE ELECTRONIC COPIES.

HR ENGINEERING SERVICES, INC.
7815 NW 72ND AVENUE
MEDLEY, FL 33166
CA NO. : 7991
HERNANDO R. RAMOS, P.E. NO. 42045

THE ABOVE NAMED PROFESSIONAL ENGINEER SHALL BE RESPONSIBLE FOR THE
FOLLOWING SHEETS IN ACCORDANCE WITH RULE 61G15-23-004, F.A.C.

LEGEND:



WATER LOSS

GROUND WATER LEVEL AT BORING
COMPLETION

B.T. BORING TERMINATED

N: STANDARD PENETRATION RESISTANCE
(AUTOMATIC HAMMER)

W.C.: WATER CONTENT

O.C.: ORGANIC CONTENT

>4: PERCENT PASSING #4 SIEVE

>200: PERCENT PASSING #200 SIEVE

HAMMER WEIGHT = 140 LB

DROP HEIGHT = 30 IN

THE TEST BORINGS WERE PERFORMED BY HRES
USING A CME-55 TRUCK MOUNTED RIG.

GRANULAR MATERIALS:

DENSITY	SPT N-VALUE (BLOWS/12 INCHES)
VERY LOOSE	<3
LOOSE	3-8
MEDIUM DENSE	8-24
DENSE	24-40
VERY DENSE	>40

SILTS AND CLAYS:

CONSISTENCY	SPT N-VALUE (BLOWS/12 INCHES)
VERY SOFT	<1
SOFT	1-3
FIRM	3-6
STIFF	6-12
VERY STIFF	12-24
HARD	>24

NOTE FOR DRILLED SHAFT CONSTRUCTION:

- THE CONTRACTOR IS ADVISED THAT CAVING SATURATED SANDY SOILS MAY BE ENCOUNTERED DURING THE EXCAVATION, FOR INSTALLATION OF THE DRILLED SHAFTS, WHICH MAY REQUIRE THE USE OF TEMPORARY FULL LENGTH CASING PER FDOT STANDARD SPECIFICATIONS.
- THE CONTRACTOR IS ADVISED THAT DENSE TO VERY DENSE SOIL AND/OR STRONG NATURAL LIMESTONE LAYER MAY BE ENCOUNTERED DURING THE EXCAVATION WHICH MAY REQUIRE SPECIAL EQUIPMENT TO EXCAVATE OR PENETRATE.
- THE CONTRACTOR IS ADVISED THAT PERIODIC TOTAL LOSS OF CIRCULATION WAS EXPERIENCED DURING THE PERFORMANCE OF THE BORINGS WHICH MAY MAKE IT DIFFICULT TO MAINTAIN THE FLUID LEVEL IN THE EXCAVATION DURING THE INSTALLATION OF THE DRILLED SHAFTS.

VERTICAL SCALE:
HORIZONTAL SCALE: NTS
HRES PROJECT No.: HRI7-1347R



REVISIONS						HERNANDO R. RAMOS, P.E. P.E. LICENSE NUMBER 42045 HR ENGINEERING SERVICES, INC 7815 NW 72ND AVENUE MEDLEY, FLORIDA 33166 CERTIFICATE OF AUTHORIZATION 7991			STATE OF FLORIDA DEPARTMENT OF TRANSPORTATION			SHEET TITLE: REPORT OF CORE BORINGS		REF. DWG. NO.
DATE	BY	DESCRIPTION	DATE	BY	DESCRIPTION	DRAWN BY: ME 02-18 CHECKED BY: NH 02-18 DESIGNED BY: NH 02-18 CHECKED BY: HRR 02-18	ROAD NO. SR A1A	COUNTY BROWARD	FINANCIAL PROJECT ID 436219-2-72-01	PROJECT NAME: SR A1A/FORT LAUDERDALE BEACH BLVD AT SE 5 ST	SHEET NO. GT-1			