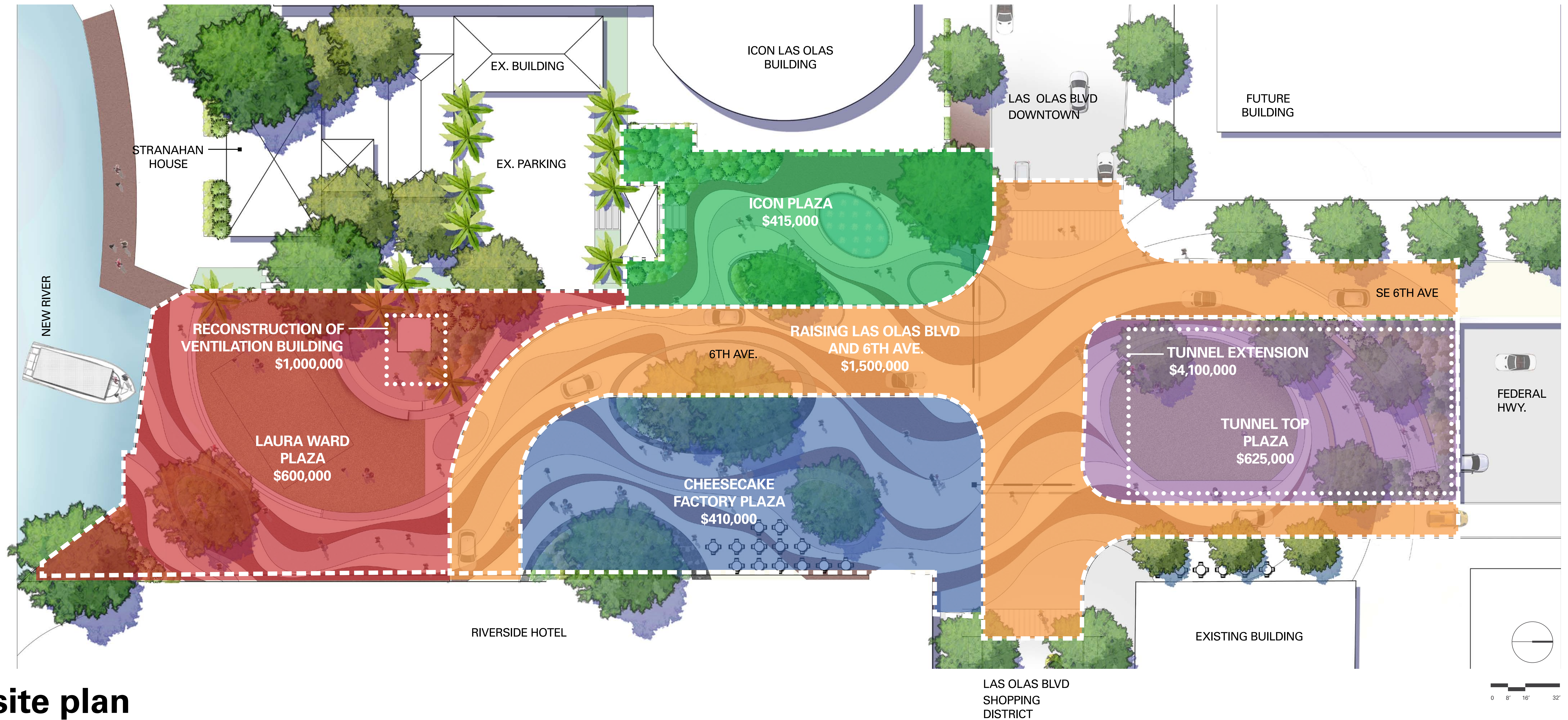


- legend
- 01_ tunnel top park
 - 02_ north side iconic shade structure (t.b.d.)
 - 03_ terraced seating area
 - 04_ terraced planting
 - 05_ planting that portrays the natural habitat of Fort Lauderdale
 - 06_ supportive shade structures
 - 07_ paving to match natural water flow
 - 08_ historic preservation element (concealed exhaust vent)
 - 09_ adjusted layout of existing water feature
 - 10_ tent staging for Stranahan House events
 - 11_ connection to the boardwalk
 - 12_ Stranahan House Visitor Center (potential location)
 - 13_ art installations (potential locations)
 - 14_ reused etched donation bricks
 - 15_ event connection to Stranahan house
 - 16_ relocated informational kiosk
 - 17_ traffic lights
 - 18_ expanded pedestrian walkways (las olas blvd. renovation)

LOCATION OF ANTICIPATED ARCHITECTURAL ELEMENTS



site plan



CONSTRUCTION PHASE

● TUNNEL EXTENSION		\$ 4,100,000
INCLUDING BRIDGE STRUCTURE AND TUNNEL FEATURES		
● RECONSTRUCTION OF NORTH SIDE VENTILATION BUILDING		\$ 1,000,000
INCLUDING REMOVAL OF FPL VAULT		
● RAISING OF LAS OLAS BOULEVARD AND SE 6TH AVENUE		\$ 1,500,000
● SITEWORK (NOT INCLUDING LANDSCAPE / ARCH. ELEMENTS)		\$ 2,050,000
	TUNNEL TOP PLAZA	\$625,000
	ICON PLAZA	\$415,000
	LAURA WARD PLAZA	\$600,000
	CHEESECAKE FACTORY PLAZA	\$410,000
● CONTINGENCY (\$2M ALLOWANCE)		\$ 2,000,000

(ESTIMATED) TOTAL PROJECT COST

\$10,650,000