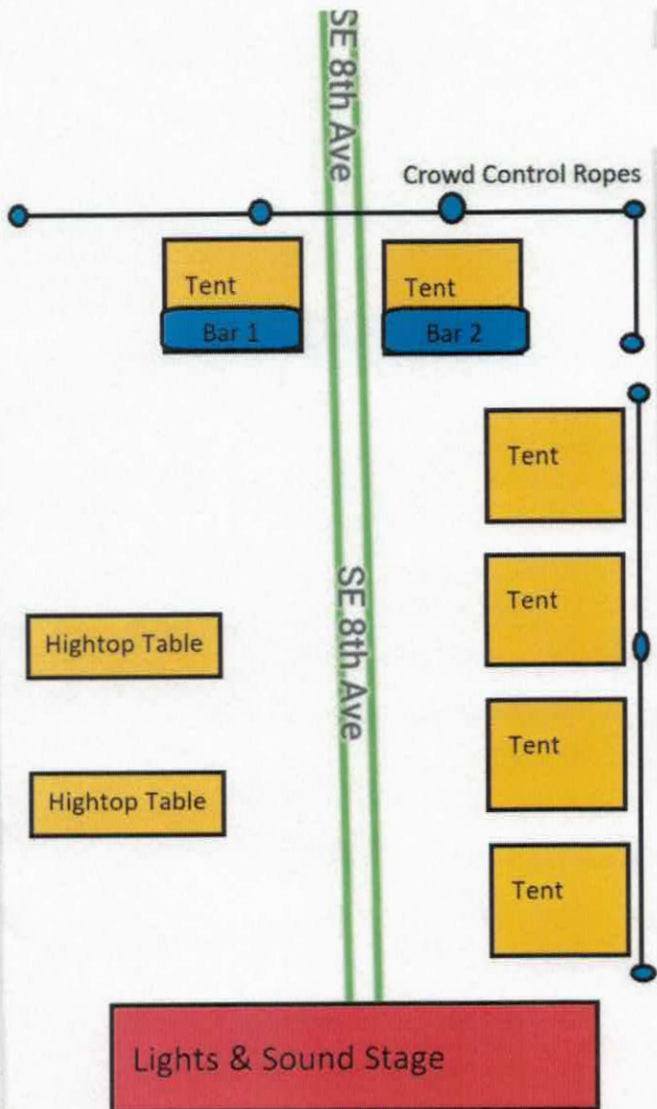


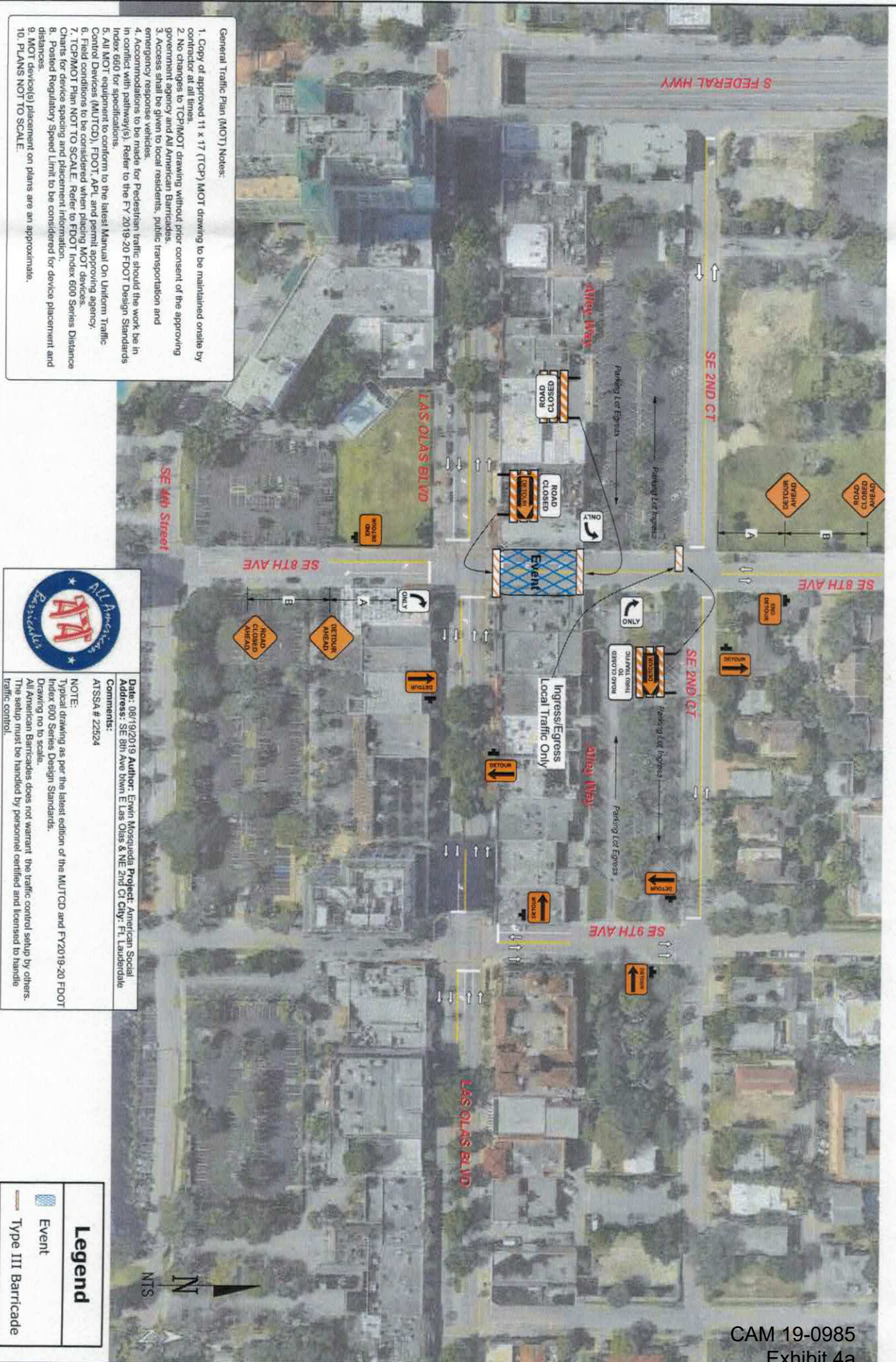
SITE PLAN  
LAS OLAS 11/2/19



Olas Blvd

dale, FL 33301 · 🚗 22 min

s: American Social



General Traffic Plan (MOT) Notes:

1. Copy of approved 11 x 17 (TCP) MOT drawing to be maintained onsite by contractor at all times.
2. No changes to TCP/MOT drawing without prior consent of the approving government agency and All American Barricades.
3. Access shall be given to local residents, public transportation and emergency response vehicles.
4. Accommodations to be made for Pedestrian traffic should the work be in conflict with pathway(s). Refer to the FY 2019-20 FDOT Design Standards Index 600 for specifications.
5. All MOT equipment to conform to the latest Manual On Uniform Traffic Control Devices (MUTCD), FDOT, APL, and permit approving agency.
6. Field conditions to be considered when placing MOT devices.
7. TCP/MOT Plan NOT TO SCALE. Refer to FDOT Index 600 Series Distance Charts for device spacing and placement information.
8. Posted Regulatory Speed Limit to be considered for device placement and distances.
9. MOT device(s) placement on plans are an approximate.
10. PLANS NOT TO SCALE.

**Date:** 08/10/2019 **Author:** Erwin Mosqueda **Project:** American Social Address: SE 8th Ave thru E Las Olas & NE 2nd Ct City: Ft. Lauderdale

**Comments:**  
ATSSA # 22524

**NOTE:**  
Typical drawing as per the latest edition of the MUTCD and FY2019-20 FDOT Index 600 Series Design Standards.  
Drawing not to scale.  
All American Barricades does not warrant the traffic control setup by others. The setup must be handled by personnel certified and licensed to handle traffic control.

Legend	
	Event
	Type III Barricade