



CITY OF FORT LAUDERDALE

# Beach Mobility Study City Commission Briefing







CITY OF FORT LAUDERDALE

# Study Overview

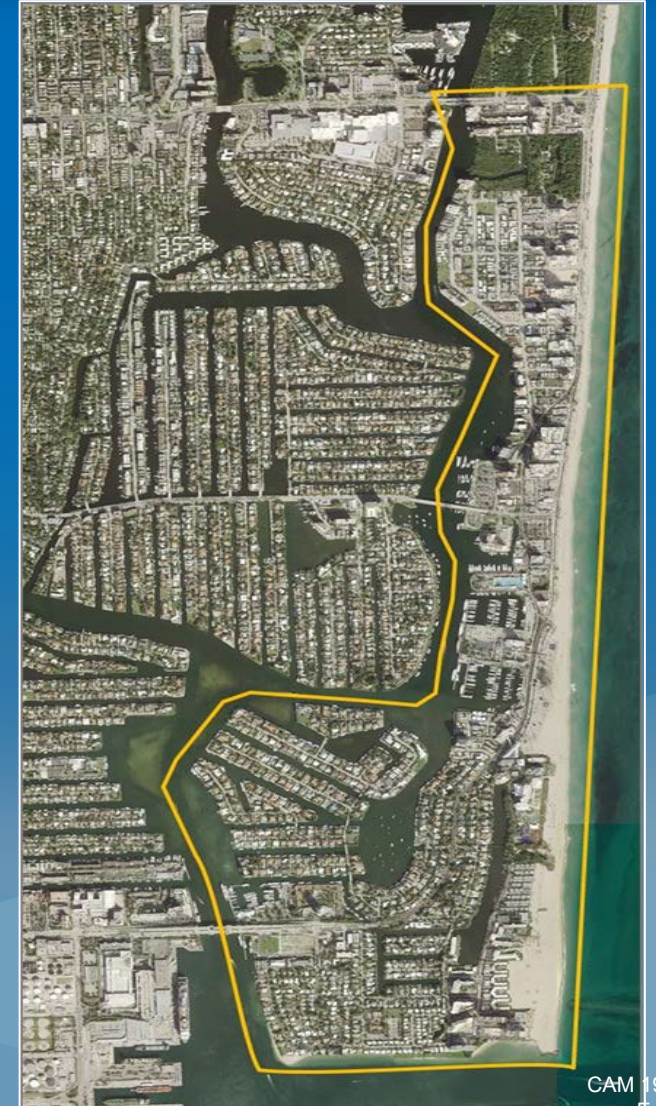
- Needs Assessment
  - Data and Analysis
  - Public Engagement
- Multimodal Strategies
  - Traffic
  - Non-Motorized
  - Transit
- Implementation
  - Stakeholder Coordination
  - Funding Options



Las Olas Blvd.



SE 17<sup>th</sup> St.







CITY OF FORT LAUDERDALE

# Needs Assessment: Data

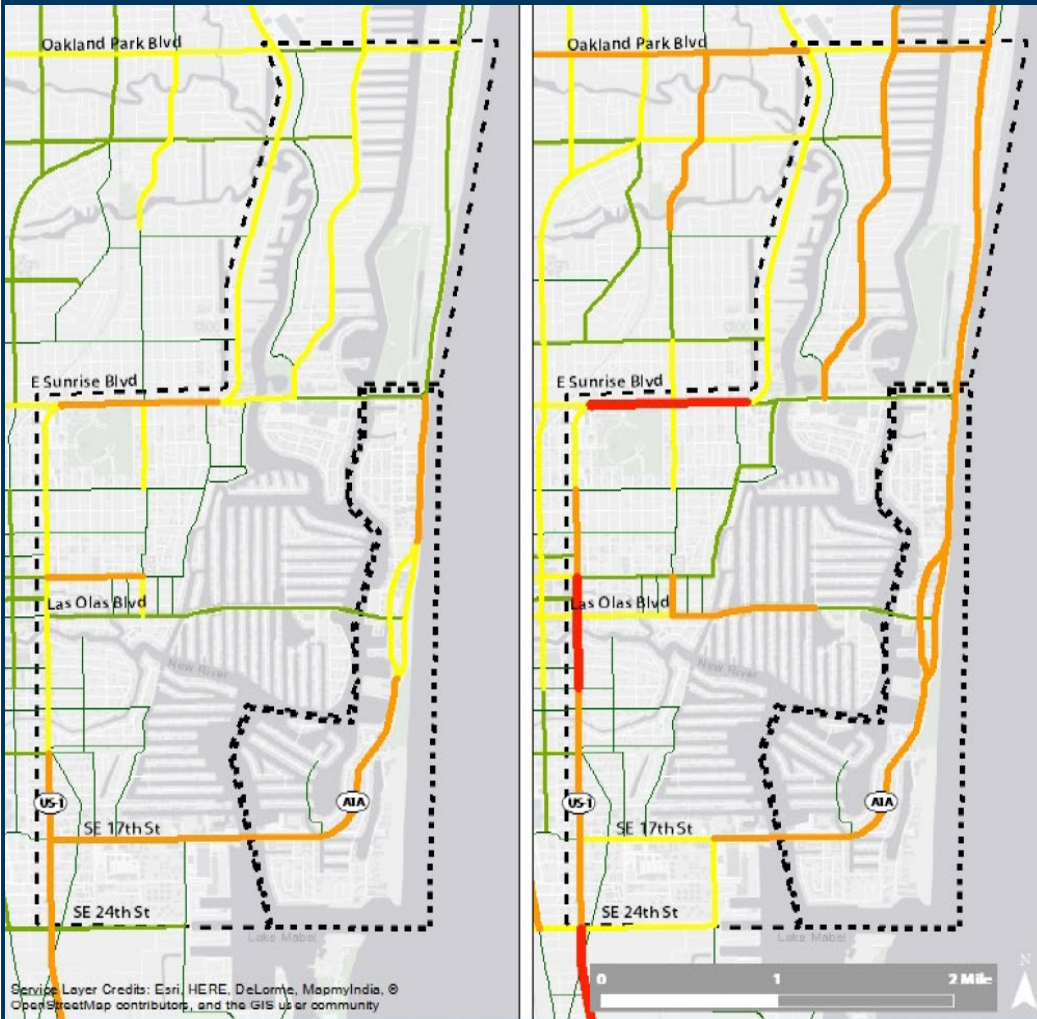
2013

2035

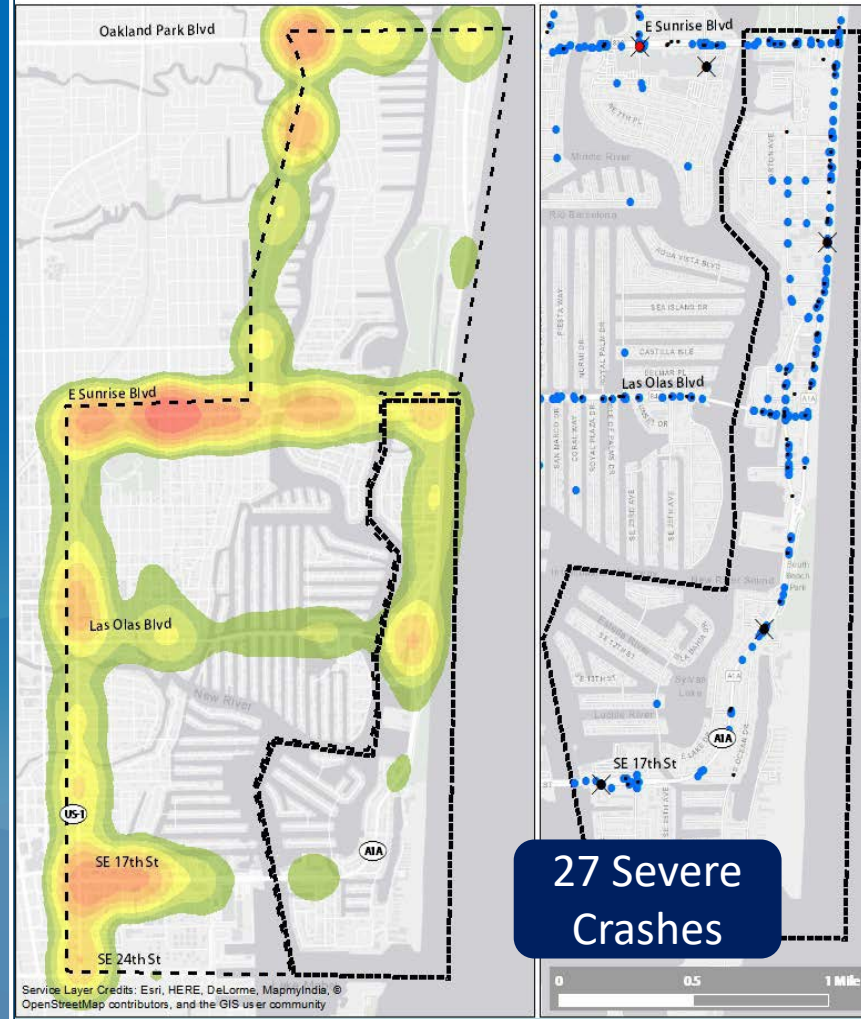
Crash Heat Map

Crashes

Transit Routes/Riders



Roadway Level of Service



Traffic Crashes



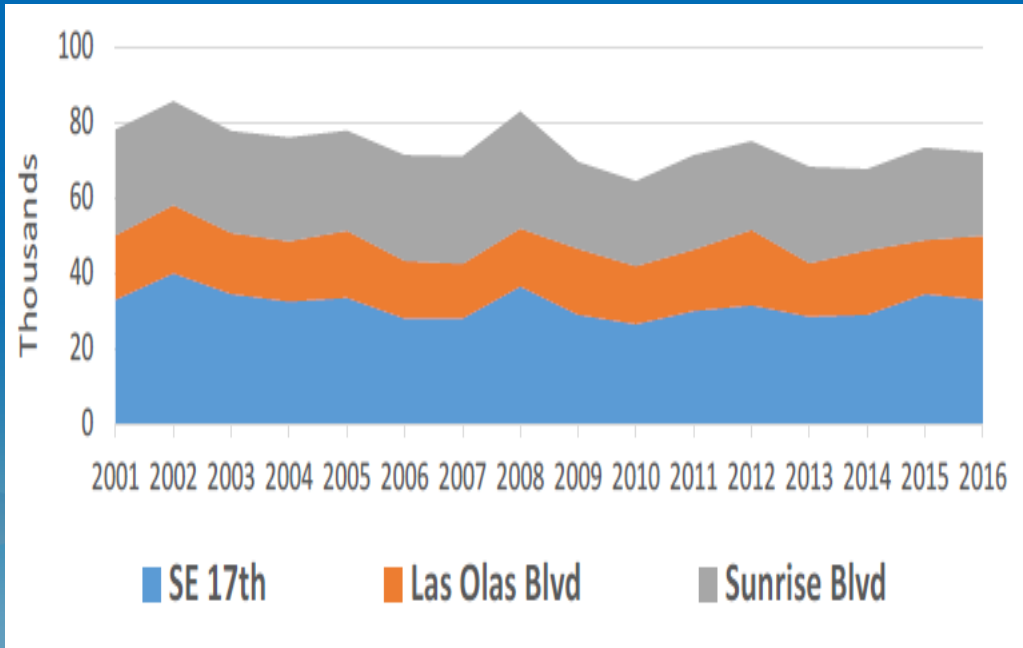
Transit Data

CAM 19-0481

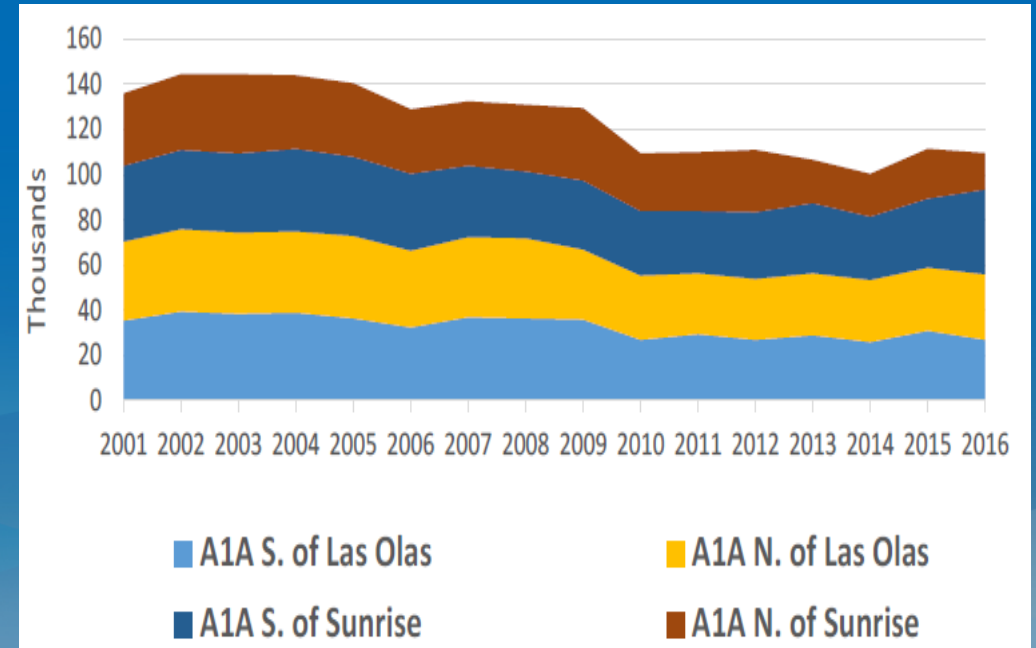


# Needs Assessment: Data

## Cumulative Bridge Daily Traffic History



## Cumulative SR A1A Daily Traffic History





# Needs Assessment: Focus Groups

- Neighbors:
  - Perception that congestion has worsened
  - Sunrise Blvd. at SR A1A intersection, among other concerns
  - Desire for protected/separated bike facilities
  - More frequent, predictable, and reliable trolley (or similar) service
  - Want overall, cohesive plan that gets implemented
- Business:
  - Similar mobility concerns
  - Need for better workforce access
  - Continue to improve on special event traffic management





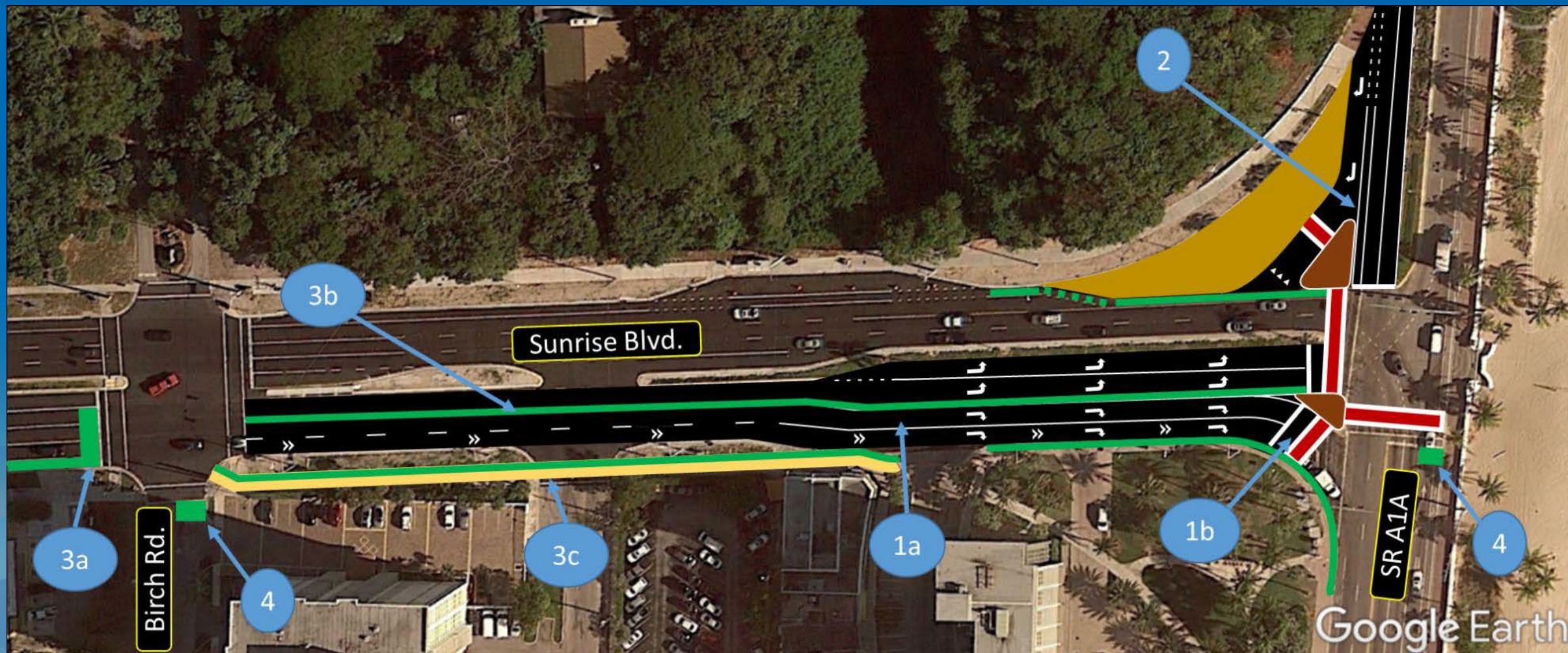
# Needs Assessment: Neighbor Survey

- Travel within study area (top two):
  - Drive (86%),
  - Walk (9%)
- Travel on/off barrier island (top two):
  - Drive (95%),
  - Taxi/Ride Share (3%)
- Preference for trolley and (safer) bike facilities over Bus as alternative
- Vision Statement preferences:
  - 56% Moving traffic quickly should be top priority.
  - 21% Main corridors are important for traffic, but some compromises are needed.
  - 10% Other modes should be prioritized on some corridors.



CITY OF FORT LAUDERDALE

# Multimodal Strategies: Traffic



Sunrise Boulevard at SR A1A Intersection Improvement Concept





# Multimodal Strategies: Traffic

- Restrict passenger loading/unloading to designated areas along SR A1A
- Planned implementation of FDOT Arterial Traffic Management System
  - Signal Coordination
  - Faster recovery from bridge openings
  - Speed management

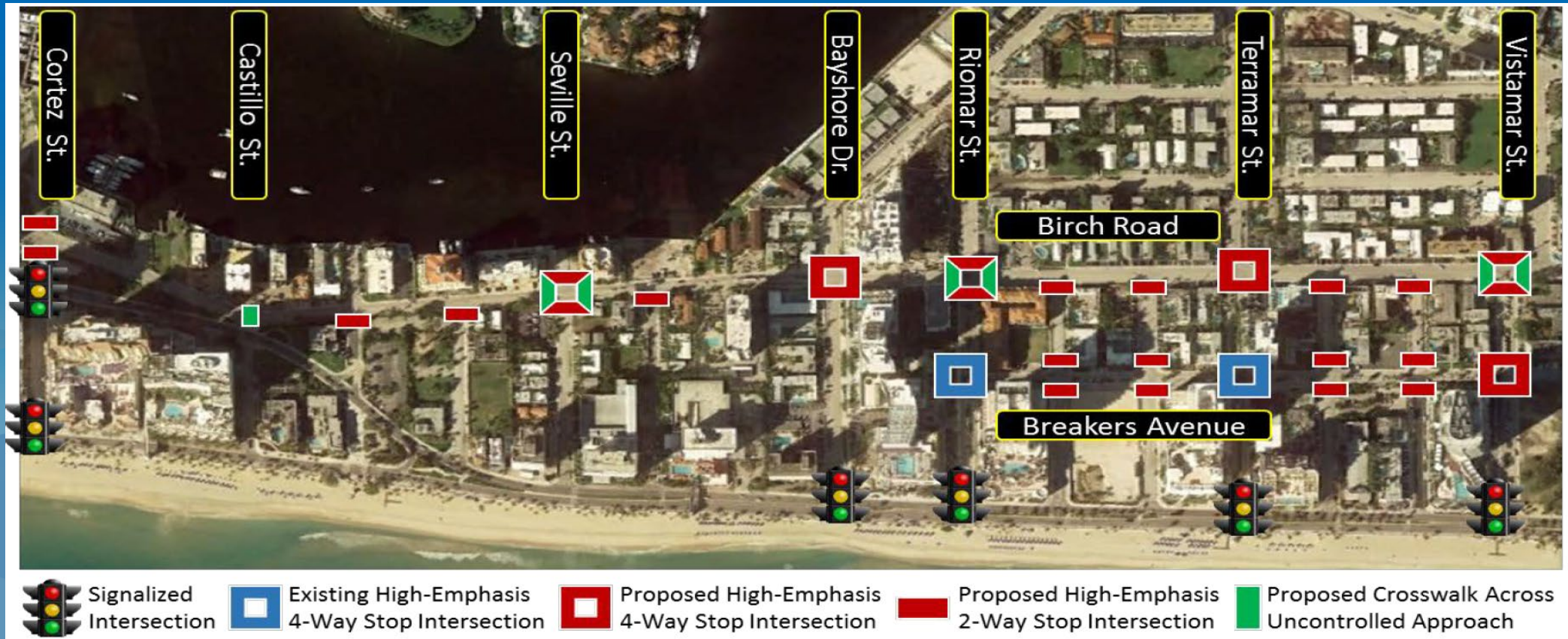




CITY OF FORT LAUDERDALE

# Multimodal Strategies: Bike/Ped

- Consistent mid-block and signalized intersection crosswalk treatments
- Birch Road and Breakers Avenue short-term crosswalk improvements

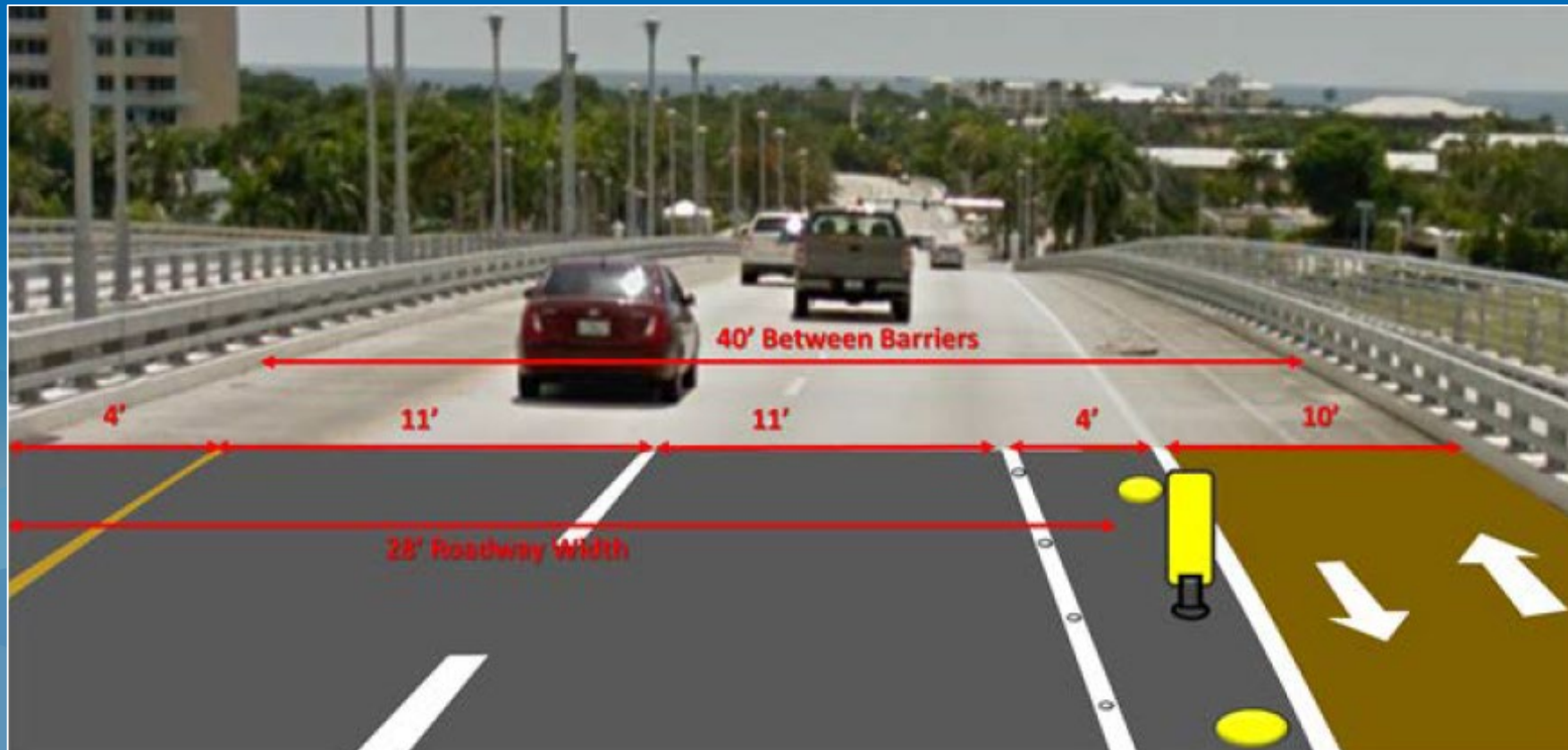




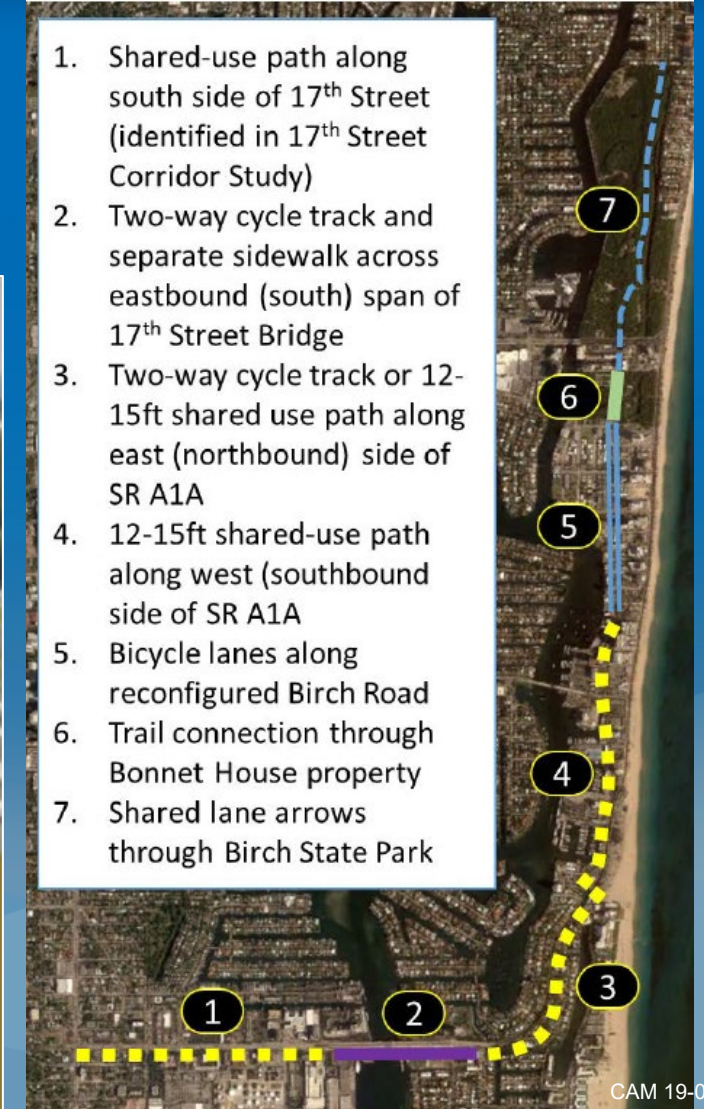


# Multimodal Strategies: Bike/Ped

## • SE 17<sup>th</sup> Street/SR A1A/Birch Road Bikeway



1. Shared-use path along south side of 17<sup>th</sup> Street (identified in 17<sup>th</sup> Street Corridor Study)
2. Two-way cycle track and separate sidewalk across eastbound (south) span of 17<sup>th</sup> Street Bridge
3. Two-way cycle track or 12-15ft shared use path along east (northbound) side of SR A1A
4. 12-15ft shared-use path along west (southbound) side of SR A1A
5. Bicycle lanes along reconfigured Birch Road
6. Trail connection through Bonnet House property
7. Shared lane arrows through Birch State Park

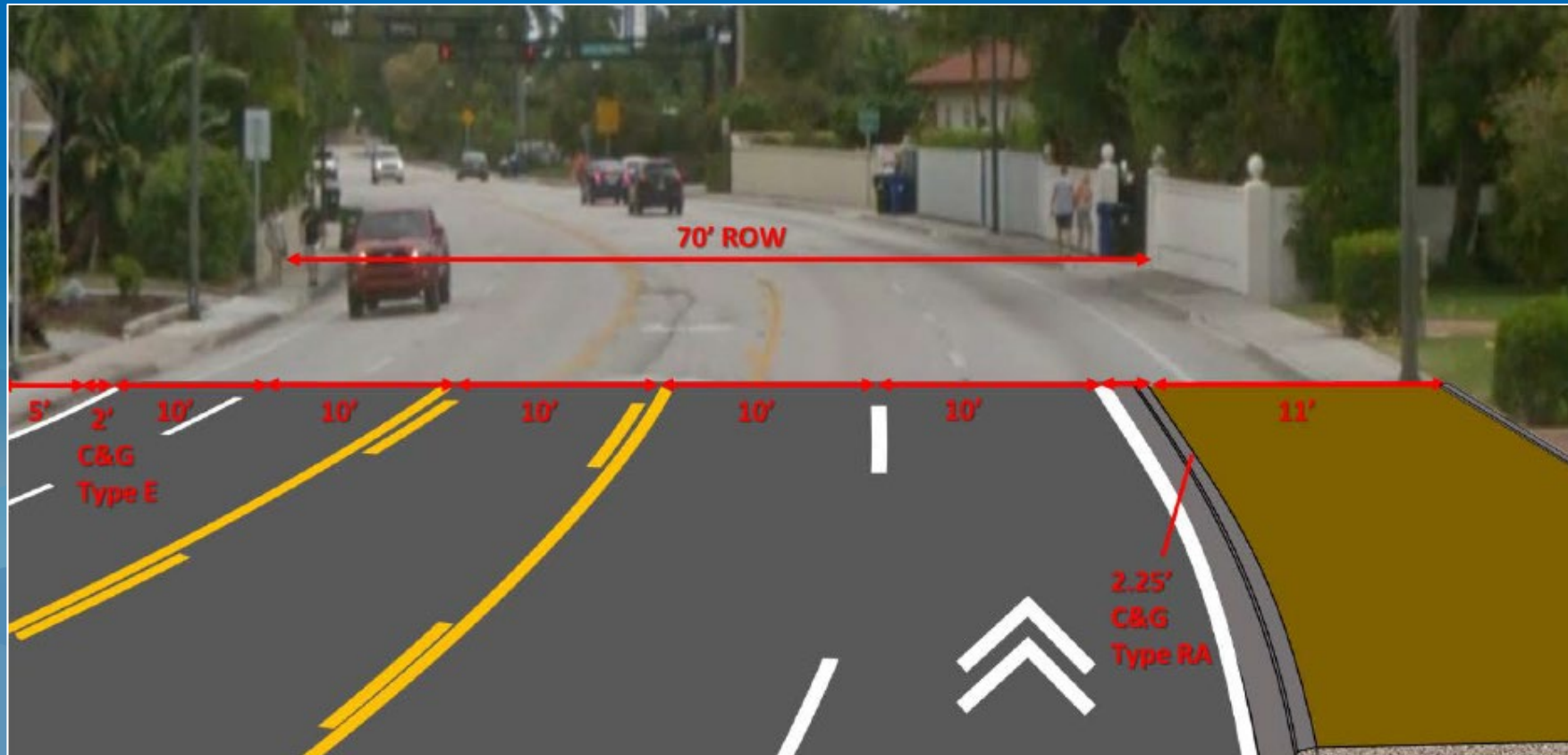






# Multimodal Strategies: Bike/Ped

## • SE 17<sup>th</sup> Street/SR A1A/Birch Road Bikeway



1. Shared-use path along south side of 17<sup>th</sup> Street (identified in 17<sup>th</sup> Street Corridor Study)
2. Two-way cycle track and separate sidewalk across eastbound (south) span of 17<sup>th</sup> Street Bridge
3. Two-way cycle track or 12-15ft shared use path along east (northbound) side of SR A1A
4. 12-15ft shared-use path along west (southbound) side of SR A1A
5. Bicycle lanes along reconfigured Birch Road
6. Trail connection through Bonnet House property
7. Shared lane arrows through Birch State Park







# Multimodal Strategies: Transit

- Expand and Simplify Sun Trolley
  - Define stops and schedule; co-locate with bike share
  - 15-minute frequency 9:30 AM to 6:30 PM
  - 30-minute frequency 6:00 AM to 9:30 AM and 6:30 PM to 10:00 PM
  - Possible replacement of some BCT service
- Encourage expansion of on-demand low-speed vehicle (LSV) services (e.g. Free Ride, etc.)
- Consider part-time trolley/LSV/Micro-mobility Device lanes on westbound SE 17<sup>th</sup> Street Causeway and Las Olas Boulevard







# Multimodal Strategies: Parking/Tech

- Leverage weekend/evening Downtown off-street parking availability (6,000 + spots)
  - Link downtown parking to beach with expanded Sun Trolley service
  - Consider trolley-only lanes for special events
- Integrate city-owned and privately-owned public parking using real-time, app-based availability and rate data.
- Consider kiosks on public right-of-way and major hotel/resort lobbies to raise awareness of mobility options.
- Verify trend suggesting reduced overnight parking at hotels/resorts and consider parking requirements for redevelopment.
- Evaluate beach parking pricing structure compared with peer communities.



# Implementation and Finance

- Project report includes implementation matrices:
  - Cost ranges
  - Project groupings for production
  - Next steps
- Discussion of funding sources:
  - CSLIP (BMPO)
  - Transit Surtax
  - City Surtax
  - FDOT Maintenance/Resurfacing
  - Federal BUILD (formerly TIGER) grant potential
  - Existing City CIP projects.





CITY OF FORT LAUDERDALE

# Questions