

m.p.d.o.k.

**VACATION OF RIGHT-OF-WAY
O.R.B. 31283, PG. 1801, B.C.R.
MIZELL CENTER, CITY OF FORT LAUDERDALE**

LEGAL DESCRIPTION:

A PORTION OF LOTS 5, 6, 7 AND 8, BLOCK "2", "LINCOLN PARK", ACCORDING TO THE PLAT THEREOF, AS RECORDED IN PLAT BOOK 5, PAGE 2 ON THE PUBLIC RECORDS OF BROWARD COUNTY, FLORIDA; BOUNDED ON THE EAST BY THE EAST LINE OF SAID LOT 5, ON THE SOUTH BY THE NORTH RIGHT-OF-WAY LINE OF SISTRUNK BOULEVARD (NORTHEAST 6TH STREET), A 70 FOOT RIGHT-OF-WAY, AS SHOWN ON THAT CERTAIN RIGHT OF WAY MAP FOR PROJECT NUMBER 2423, RIGHT OF WAY NUMBER 105, ON FILE IN THE OFFICE OF THE CITY ENGINEER OF FORT LAUDERDALE AT FILE NUMBER 4-89-57, BOUNDED ON THE WEST BY THE WEST LINE OF SAID LOT 8 AND ON THE NORTH BY A LINE PARALLEL WITH AND 5.0 FEET NORTH OF, AS MEASURED AT RIGHT ANGLES, SAID NORTH RIGHT OF LINE

SAID LANDS SITUATE, LYING AND BEING IN THE CITY OF FORT LAUDERDALE, BROWARD COUNTY, FLORIDA, CONTAINING 500 SQUARE FEET, MORE OR LESS.

NOTES

1. Not valid without the signature and original raised seal of a Florida Licensed Surveyor & Mapper
2. Bearings shown hereon are assumed and referenced to the North right-of-way line of Sistrunk Boulevard having a bearing of S88°14'18"W.
3. Calvin, Giordano & Associates, Inc. Certificate of Authorization Number is LB #6791.

CERTIFICATE

I, Steven M. Watts, do hereby certify that this Sketch and Description was done under my direct supervision and is accurate and correct to the best of my knowledge and belief. I further state that this Sketch and Description was completed in accordance with the Standards of Practice requirements for Surveying and Mapping as stated in Rule 5J-17 of the Florida Administrative Code, pursuant to Florida Statutes, Chapter 472.027.

Signature _____

Steven M. Watts, PSM
Professional Surveyor and Mapper
Florida Registration No. 4588
Calvin, Giordano & Associates, Inc.

ABBREVIATIONS

B.C.R. = Broward County Records
O.R.B. = Official Record Book
P.B. = Plat Book
PG. = Page
R/W = Right-of-Way
BLK. = Block

THIS IS NOT A SURVEY



Calvin, Giordano & Associates, Inc.
EXCEPTIONAL SOLUTIONS™
1800 Eller Drive, Suite 600, Fort Lauderdale, Florida 33316
Phone: 954.921.7781 • Fax: 954.921.8807

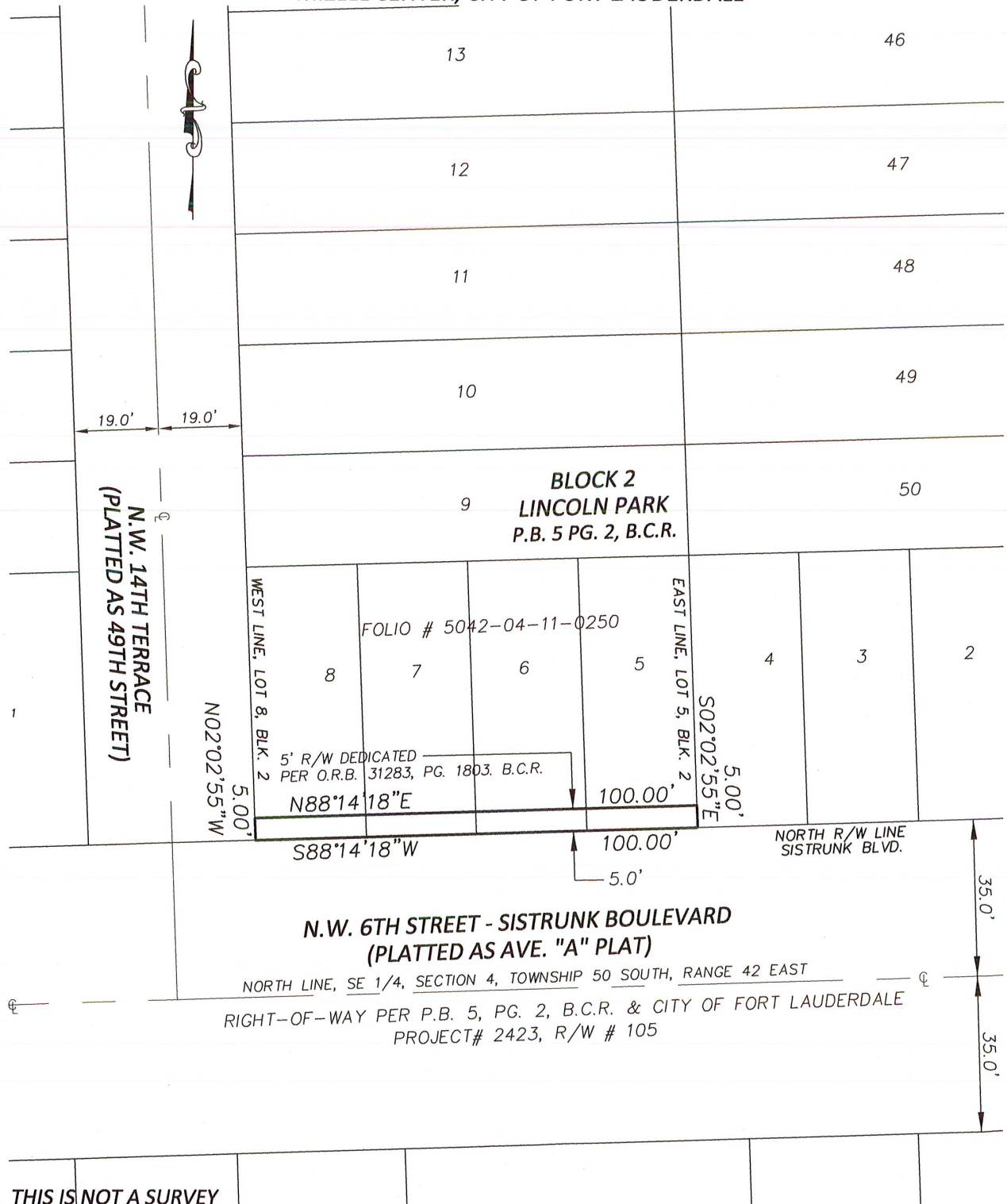
Certificate of Authorization 6791

**SKETCH & DESCRIPTION
VACATION OF R/W
O.R.B. 312783, PG. 1801, B.C.R.**

SCALE	PROJECT No.	SHEET
N/A	08-2276.84	
DATE	CAD FILE	1
04/23/2019		2

VACATION OF RIGHT-OF-WAY
O.R.B. 31283, PG. 1801, B.C.R.
MIZELL CENTER, CITY OF FORT LAUDERDALE

M.D.O.K.



THIS IS NOT A SURVEY



Calvin, Giordano & Associates, Inc.
EXCEPTIONAL SOLUTIONS™
1800 Eller Drive, Suite 600, Fort Lauderdale, Florida 33316
Phone: 954.921.7781 • Fax: 954.921.8807
Certificate of Authorization 6791

SKETCH & DESCRIPTION
VACATION OF R/W
O.R.B. 31283, PG. 1801, B.C.R.

SCALE
1"=30'
DATE
04/22/2019

PROJECT No.
04-4723
CAD FILE

SHEET
2
2