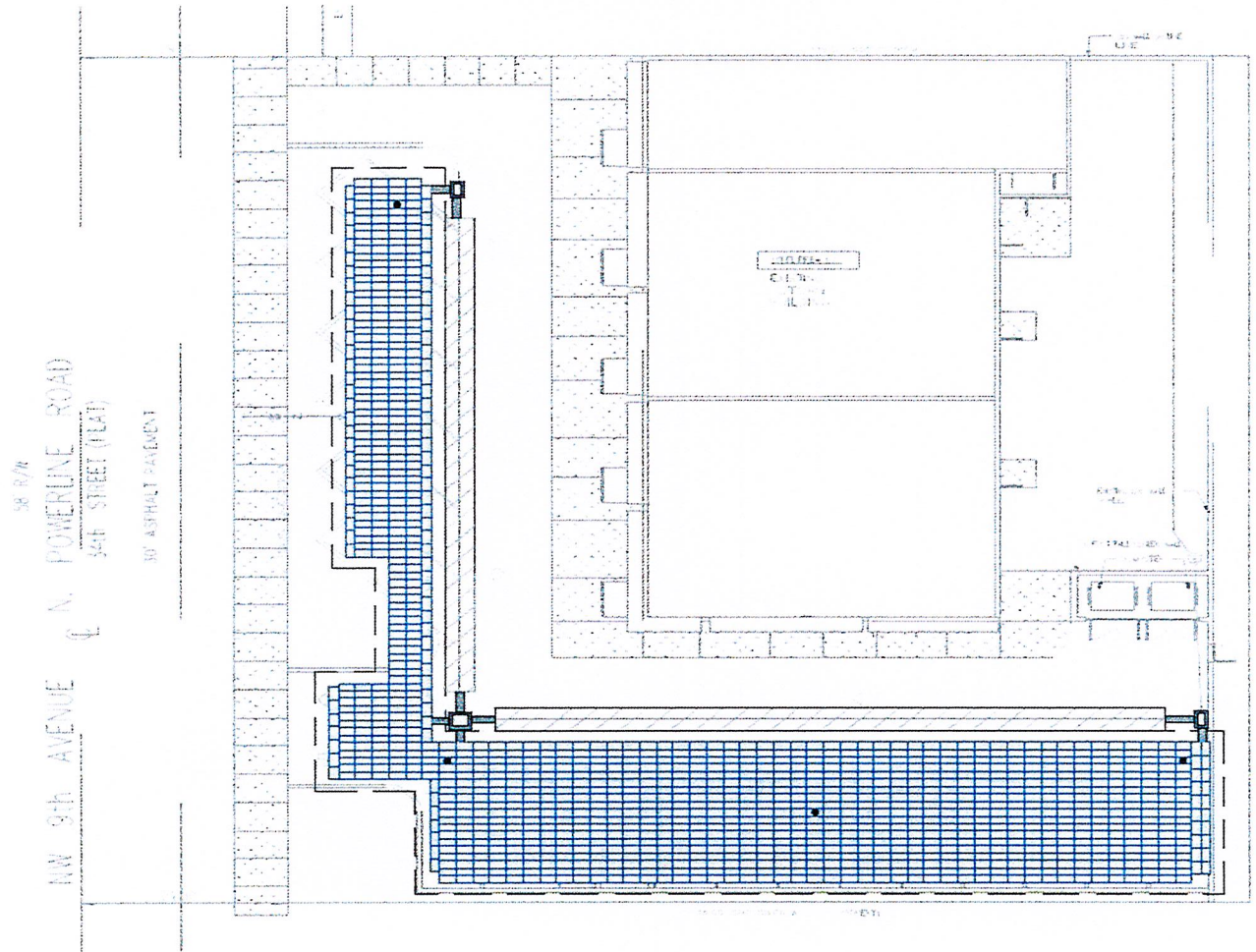
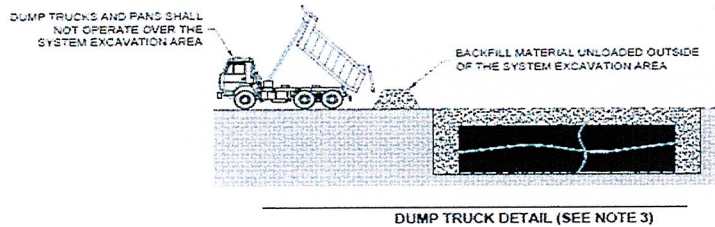


# Water Retention Tank Site Plan



## Water Retention Tank Details



### NOTES

1. FOLLOWING PLACEMENT OF SIDE BACKFILL, A UNIFORM 12" LIFT OF THE FREELY DRAINING MATERIAL (SPEC SECTION 2.05 B) SHALL BE PLACED OVER THE R-TANK AND LIGHTLY COMPACTED USING A WALK-BEHIND TRENCH ROLLER. ALTERNATELY, A ROLLER (MAXIMUM GROSS VEHICLE WEIGHT OF 6 TONS) MAY BE USED. ROLLER MUST REMAIN IN STATIC MODE UNTIL A MINIMUM OF 24" OF COVER HAS BEEN PLACED OVER THE MODULES. SHEEP FOOT ROLLERS SHOULD NOT BE USED. SPEC SECTION 3.05 A
2. ONLY LOW PRESSURE TIRE OR TRACK VEHICLES (LESS THAN 7 PSI AND OPERATING WEIGHT OF LESS THAN 20,000 LBS) SHALL BE OPERATED OVER THE R-TANK SYSTEM DURING CONSTRUCTION. SPEC SECTION 3.05 B
3. DUMP TRUCKS AND PANS SHALL NOT BE OPERATED WITHIN THE R-TANK SYSTEM AT ANY TIME. WHERE NECESSARY, THE HEAVY EQUIPMENT SHOULD UNLOAD IN AN AREA ADJACENT TO THE R-TANK SYSTEM AND THE MATERIAL SHOULD BE MOVED OVER THE SYSTEM WITH TRACKED EQUIPMENT. SPEC SECTION 3.05 B
4. ENSURE THAT ALL UNRELATED CONSTRUCTION TRAFFIC IS KEPT AWAY FROM THE LIMITS OF EXCAVATION UNTIL THE PROJECT IS COMPLETE AND FINAL SURFACE MATERIALS ARE IN PLACE. NO NON-INSTALLATION RELATED LOADINGS SHOULD BE ALLOWED OVER THE R-TANK SYSTEM UNTIL THE FINAL DESIGN SECTION HAS BEEN CONSTRUCTED (INCLUDING PAVEMENT). SPEC SECTION 3.05 C
5. SEE R-TANK INSTALLATION GUIDE OR CONTACT YOUR LOCAL ACF REPRESENTATIVE FOR ADDITIONAL INFORMATION.

