





**DISTANCE BETWEEN SIGNS**

Speed	Spacing (ft.)		
	A	B	C
40 mph or less	200	200	200
45 mph	350	350	350



**MARK MEYERS**  
 The Traffic Control Experts  
 Mark Meyers  
 Has Completed a Florida Department of Transportation Approved  
 Temporary Traffic Control (TTC) Advanced (Refresher) Course.  
 Date Expires: 02/11/2023  
 Instructor: Ricardo Cabrera  
 Certificate # 47259  
 FOOT Provider # 57

**ATSSA**  
 404-368-1701  
 15 Riverside Parkway Ste. 100  
 Fredericksburg, VA  
 donna.clark@atssa.com

**ATSSA**  
 SAFER HIGHER SURE LIVES

**Table 1**  
**Device Spacing**

Max. Distance Between Devices (ft.)	
Cones or Tubular Markers	Type I or Type II Barricades or Vertical Panels or Drums
Taper	Tangent
25	25
30 to 45	30
	50



## Notes for Figure 6H-20—Typical Application 20

### Detour for a Closed Street

#### Guidance:

1. *This plan should be used for streets without posted route numbers.*
2. *On multi-lane streets, Detour signs with an Advance Turn Arrow should be used in advance of a turn.*

#### Option:

3. Flashing warning lights and/or flags may be used to call attention to the advance warning signs.
4. Flashing warning lights may be used on Type 3 Barricades.
5. Detour signs may be located on the far side of intersections. A Detour sign with an advance arrow may be used in advance of a turn.
6. A Street Name sign may be mounted with the Detour sign. The Street Name sign may be either white on green or black on orange.

#### Standard:

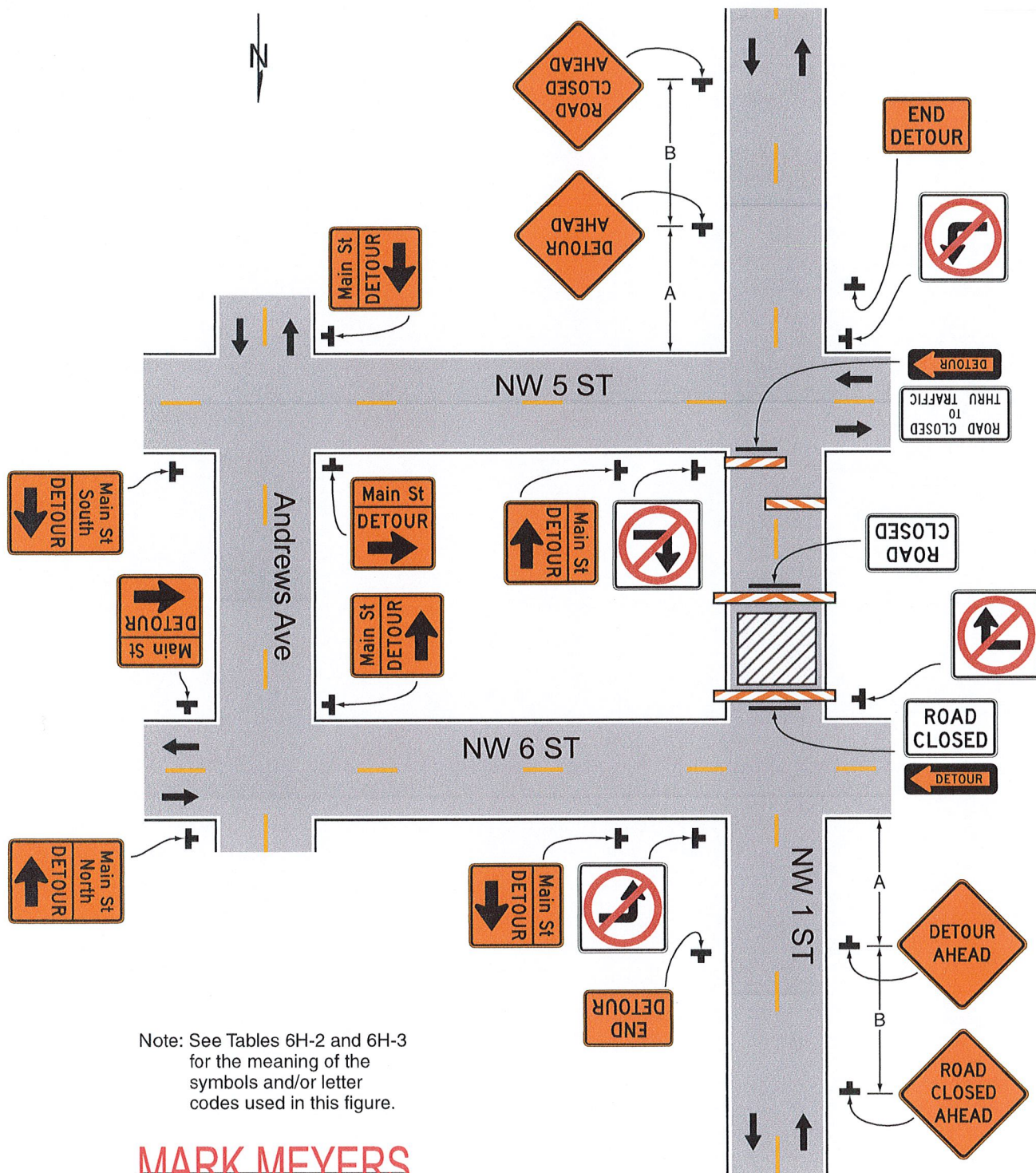
7. **When used, the Street Name sign shall be placed above the Detour sign.**

#### Support:

8. See Figure 6H-9 for the information for detouring a numbered highway.



**Figure 6H-20. Detour for a Closed Street (TA-20)**



Note: See Tables 6H-2 and 6H-3 for the meaning of the symbols and/or letter codes used in this figure.



## Typical Application 20