

Statement of Qualification For
The City of Fort Lauderdale RFQ No. 12135-986
Construction Engineering and Inspection (CE&I) Services
For Downtown Mobility Hub Project



US-1 Resurfacing in Vero Beach

By:



WB SR 836 Flyover to Florida's Turnpike

CAM #18-1170

Exhibit 8

1 of 58

Table of Contents

1.1 Executive Summary	3
1.2 Minimum Eligibility Requirements	3
Work History:.....	3
Licenses:.....	4
Government Qualifications:	4
2.1 Firms Qualifications and Experience	5
2.1.1 Relevant CEI Services Projects	5
Transportation Hub:.....	5
Utilities:	6
Complete Streets:.....	6
Roadways and Bridges:	6
Intelligent Traffic Systems (ITS):	7
2.2 Organizational Profile and Project Team	8
2.2.1 Team Leader	8
Contract Manager and Senior Project Engineer Jose A. Gonzalez, PE:.....	8
Proven success in cost effective project delivery:	8
Proven success in delivering technically unique solutions:	8
2.2.2 Management and Organizational Structure	9
Quality Assurance (QA):.....	9
Technical Staff:.....	9
3.0 Approach to Scope of Work	11
3.0 References.....	15
4.0 Minority/Women (M/WBE).....	15
5.0 Subconsultants.....	17
Tab 1 (SF 330 Forms)	18
Tab 2 (Required Forms)	48

April 30, 2018

City of Fort Lauderdale
Tanzania Johnson MPA, Senior Procurement Specialist
Fort Lauderdale City Hall
100 N. Andrews Avenue, 6th Floor
Fort Lauderdale, FL 33301



Construction Engineering and Inspection (CEI) Services for Downtown Mobility Hub Project

Dear Ms. Johnson,

As the City of Fort Lauderdale (City) moves forward to select a consultant to provide CEI services, it is vital that the City partner with professionals who share in your vision and are familiar with your unique situation and goals. CIMA Engineering Corp. (CIMA) are those professionals and committed to providing the City with the highest level of professional service, quality, and value.

Since 1999, CIMA has partnered with governments to create a vibrant and successful public realm. We will continue and develop our relationship with the City and translate those words into action by responding quickly and efficiently to the City's requests.

We understand the exceptional qualities required of a consultant providing CEI services. I will be the main point of contact with the City and proactively meeting on construction engineering challenges. We will work closely with staff, and the public, to provide innovative and cost-effective solutions which will enhance and sustain the built, natural, and social environments. CIMA is fully capable and committed to providing the services, outlined in the request. CIMA a Local City Business, is a DBE Certified business with the FDOT and a Certified MBE in the State of Florida.

CIMA is a firm that is uniquely qualified to provide a wide variety of consulting services for all your CEI needs. Our breadth of expertise covers everything from Utilities to Facilities, available from one consulting company.

We offer you our unwavering commitment to provide the City with professional and creative solutions to any project that is put before us. Upon your review of our qualifications, should you find that there are any questions regarding the information provided or you wish to seek clarification of any of the information, please do not hesitate to contact us directly.

Regards
Jose A. Gonzalez, P.E.,
President / Senior Project Engineer
3313 W. Commercial Blvd., Suite # 314
Fort Lauderdale, Fl. 33309
T. / F. (954) 581-1881 Ext. 101

Attached (1) Original (4) Copies (2) Thumbdrives

1.1 Executive Summary

CIMA Engineering Corp. (CIMA) is pleased to present our credentials for providing Construction Engineering and Inspection (CEI) Services to the **City of Fort Lauderdale (CFL)**. We are a full-service CEI firm with talented people throughout South Florida. We pride ourselves on providing our clients with CEI services that bring their projects in on time and within budget, while providing maximum safety and convenience to the public. Our work is solid, and our team members are reliable and responsible. One major reason for our success is our great depth of staff in all disciplines that enables us to meet accelerated schedules and to conduct multiple projects concurrently without sacrificing quality.

Transportation and infrastructure have been our bread-and- butter work since the opening off our firm. Of relevance, we have served county's and municipal clients in addition to the Florida Department of Transportation (FDOT). Further, we routinely work on projects funded by a myriad of federal and state agencies, and we are thoroughly familiar with the requirements, procedures, manuals, processes, and expectations of the agencies that are involved.

We assign our staff to projects based on matching their skills to the project at hand. The team we are proposing is well-versed in documenting compliance with contract documents and agency requirements, and in proactive, effective communication with the CFL and its contractors to avoid delays and budget over-runs. We are extremely well organized and are experienced in managing these types of projects.

As you read the additional information submitted in this qualification statement you will gain a better understanding of the tools we employ to plan our projects, to communicate clearly with all stakeholders, and to execute our plan to ensure the project is completed to the standards required by the CFL as well as to FTA, FDOT and Federal requirements.

Our firm has been providing professional CEI services in Florida since our commencement in 1999. CIMA is a premier firm specializing in CEI services. We performed these services for several agencies and different contract types such as conventional, design build and CM at Risk.

1.2 Minimum Eligibility Requirements

Work History:

As CIMA approaches our 18th year anniversary in the CEI Profession, we have completed 41 projects. Below is a breakdown of our projects.

Government Agency	Number of Projects	Roadway	Bascule Bridges	Conventional Bridges	Complex Bridges	Building	Water and Sewer	Site Work	ITS / Electrical	Landscaping
Florida Department of Transportation	20	✓	✓	✓			✓		✓	✓
Miami Dade Expressway Authority	4	✓			✓	✓	✓	✓	✓	✓
City of Fort Lauderdale	5					✓		✓		✓
Seminole Tribe of Florida	4	✓		✓			✓			
Miami Dade Public Schools	4					✓				
Miami Dade Water and Sewer	4	✓					✓			
City of Miami Beach	1	✓					✓			

City Judgements:

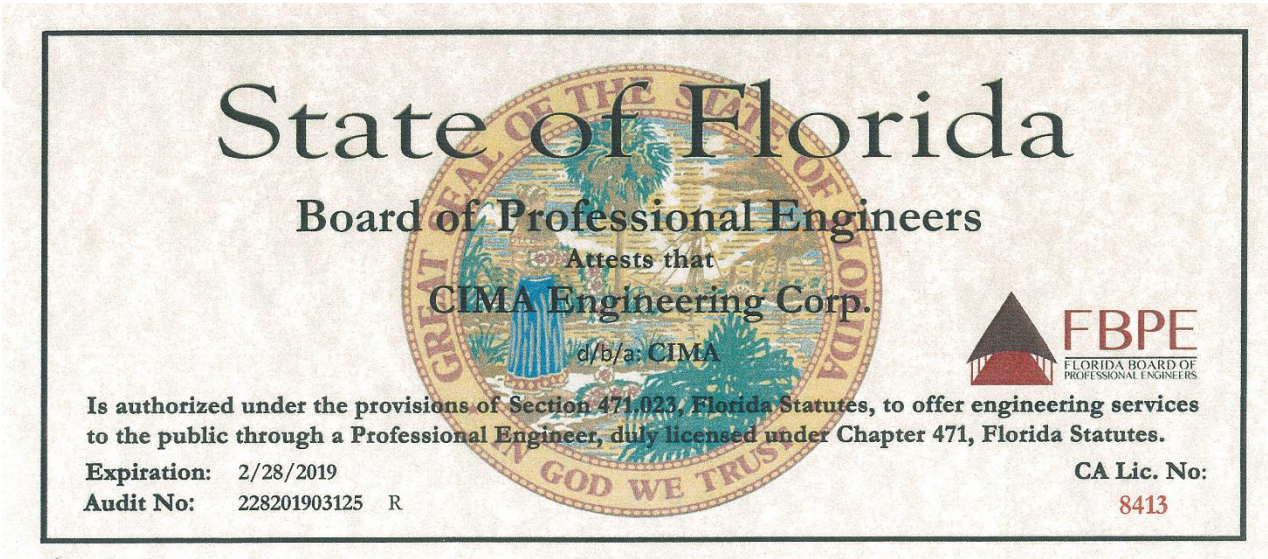
CIMA or its principal have no judgements.

City Defaults:

CIMA or its principal have no contract defaults.

Licenses:

CIMA is a Certified Engineering Firm in The State of Florida.



Government Qualifications:

CIMA is prequalified by the FDOT and Miami Dade County to provide CEI Services.

FDOT
Florida Department of Transportation
605 Suwannee Street
Tallahassee, FL 32399-0450

RICK SCOTT
GOVERNOR

RACHEL D. CONE
INTERIM SECRETARY

March 17, 2017

Jose Gonzalez, President
CIMA ENGINEERING CORP.
3313 West Commercial Boulevard, Suite 113
Fort Lauderdale, Florida 33309

Dear Mr. Gonzalez:

The Florida Department of Transportation has reviewed your application for qualification package and determined that the data submitted is adequate to technically qualify your firm for the following types of work:

Group 3 - Highway Design - Roadway

3.1 - Minor Highway Design

Group 10 - Construction Engineering Inspection

10.1 - Roadway Construction Engineering Inspection

10.3 - Construction Materials Inspection

10.4 - Minor Bridge & Miscellaneous Structures CEI

Your overhead audit has been accepted, enabling your firm to compete for Professional Services projects advertised at the unlimited level, with estimated fees of any dollar amount. This status shall be valid until June 30, 2018 for contracting purposes.

	Home/Branch Office	Field Office	Facilities Capital Cost of Money	Overtime Premium Excluded	Direct Expense
Overhead Rate	205.37%	147.95%	0.242%	0.00% (Home)	10.26% (Field)*

*Rent and utilities excluded from field office rate. These costs will be directly reimbursed on contracts that require the consultant to provide field office.

Should you have any questions, please feel free to contact me by email at carliayn.kell@dot.state.fl.us or by phone at 850-414-4597.

Sincerely,
Carliayn Kell
Carliayn Kell
Professional Services
Qualification Administrator
www.fdot.gov

MIAMI - DADE
Miami-Dade County
Internal Services Department
Statement of Technical Certification Categories

Firm: CIMA Engineering
1111 SW 8 Street Suite 202
Miami, FL 33130

CATEGORY NO.	CATEGORY DESCRIPTION	APPROVAL DATE	EXPIRATION DATE
3.01	HIGHWAY SYSTEMS - SITE DEVELOPMENT AND PARKING LOT DESIGN	1/8/2016	1/31/2018
3.09	HIGHWAY SYSTEMS - SIGNING, PAVEMENT MARKING, AND CHANNELIZATION	1/8/2016	1/31/2018
6.01	WATER AND SANITARY SEWER SYSTEMS - WATER DISTRIBUTION AND SANITARY SEWAGE COLLECTION AND TRANSMISSION SYSTEMS	1/8/2016	1/31/2018
10.01	ENVIRONMENTAL ENGINEERING - STORMWATER DRAINAGE DESIGN ENGINEERING SERVICES	1/8/2016	1/31/2018
16.00	GENERAL CIVIL ENGINEERING	1/8/2016	1/31/2018
17.00	ENGINEERING CONSTRUCTION MANAGEMENT	1/8/2016	1/31/2018

2.1 Firms Qualifications and Experience

CIMA brings a proven track record of working with Federal, State, Cities and County agencies from across South Florida, including the CFL and local public agencies (LPA), in successfully providing full CEI services. Successfully managing project delivery is not accidental. It requires a proactive, interdisciplinary team of skilled and knowledgeable staff endorsing a common purpose, determined to meet or exceed the goals of the project as well as the needs of our client.

We have hand-picked our team members, not only for their relevant project experience on multiple discipline projects, but also for their local knowledge. We are eager to be a part of this important contract for the CFL and are confident that we can exceed your expectations.

CIMA is a full service CEI Firm. Our Experience on multidisciplinary projects include:

- Road and Bridge Projects
- Heavy Civil Projects
- Complete Street Projects
- Transportation Hubs
- ITS and Communications Projects
- Utility Projects
- Building and Facilities Project

CIMA Team members are currently working together to complete ongoing assignments and have successfully worked together in the past. Through these and other prior contracts, our Team has become thoroughly familiar with all types of construction. More importantly, our staff has developed an awareness of current CFL, FDOT and County practices, procedures, and specifications that are applicable to the proposed projects.

There are several items within the CEI scope of services that require full attention from the CEI Team to ensure the contract runs seamlessly. Many of those items are discussed in other sections within this statement; CIMA takes pride in our proactive approach to contract management.

2.1.1 Relevant CEI Services Projects

Transportation Hub:

Miami Dade County Transit Dolphin Station Park and Ride: CIMA is providing, CEI services for a Design Build Contract for a new park and ride transit facility and access road within the NW quadrant of the Homestead Extension of the Florida's Turnpike and NW 12th St. interchange. The project will support the MDT SR 836 Express Bus Service as well as other planned Express Bus routes and will potentially be used as a terminus or stop for several local bus routes serving the Dolphin Mall and nearby cities of Sweetwater and Doral. This project is a joint agency collaboration between FDOT, Miami Dade County Department of Public Works and being developed by the Miami Dade Expressway Authority. The project includes water and sewer, site work, two hub buildings, bus terminal, parking lot, traffic signal installation, adjacent roadway construction and ITS.

Project Information

Owner: Miami Dade Expressway Authority

Reference: Claudio Diaferia, P.E. (305)637-3277
cdiaferia@mdxway.com

Project Dates: 2016 - 2018

Construction Cost: \$16.9 Mil.



Bus Terminal Rendering

Utilities:

Miami Dade County Water and Sewer Capital Improvement Program: CIMA is providing, CEI services for the construction of several new water and sewer projects in Miami Dade County, Florida. The projects range from the installation of watermain and services, sewer installations and force mains. Our services included daily reporting thru the county's document control system, inspections of materials being installed, backfilling operations, pressure testing, chlorination and testing of water lines, MOT inspection, as-build, payments and acceptance of work.

Project Information

Owner: Miami Dade County Water and Sewer

Reference: Luis Rojas (786)402-1292, Luis.Rojas@miamidade.gov and Carlos Baro (786)552-4366, Carlos.Baro@miamidade.gov

Project Dates: 2016 - 2017

Construction Cost: \$500K. to \$5 Mil.



Watermain and Service Installation

Complete Streets:

Seminole Tribe of Florida, Snake Road Bridge Replacement and Roadway Re-construction: CIMA was the primary consultant for the (2) two phases of the of this road (BIA 814). The existing rural road was reconstructed to an urban section.

The project included sidewalks, bike lanes, ATV path, lighting, comfortable and accessible public transportation stops, frequent and safe crossing opportunities, median islands, the first traffic signal in the reservation and more. Also a new bridge and roadway along with pond construction, channel excavation, earthwork, water and sewer, drainage, asphalt and signage was included. The bridge and roadway is a vital component of access to the Indian Reservation located in the Big Cypress Reserve in Hendry County, FL.

Project Information

Owner: Seminole Tribe of Florida

Reference: Richard Pereira, P.E. (954)465-5628 Previous Director of Transportation now with BCAD, rpereira@broward.org

Project Dates: 2011 - 2015

Construction Cost: Phase 1: \$2.2 Mil. and Phase 2: \$11.4 Mil.



New Snake Road Bridge

Roadways and Bridges:

FDOT's D-4 I-95 Express Lane Phase II:

Fin: 422796-1/2-52-01, Design Build Contract for Phase 2 of I-95 Express Lanes extension north from the Golden Glades Interchange, in Miami-Dade County, to Broward Boulevard, in Broward County, by converting the existing High Occupancy Vehicle (HOV) lanes into two express lanes in each direction. Other work includes: installing Intelligent Transportation System (ITS) and Tolling components; modifying the Ives Dairy Road interchange; bridge widening at specific locations; and installing new noise walls; MES Walls a bridge approached; New signalization in Miami Dade and Broward County.

Project Information

Owner: Florida Department of Transportation

Reference: Albert Salas, P.E. (954)958-7628 Broward Operations
Construction Engineer, Albert.Salas@dot.state.fl.us

Project Dates: 2011 - 2016

Construction Cost: \$124.2 Mil.



Express Lanes

MDX 836-12 Design Build Project (Turnpike Flyover) Westbound SR-836 to Florida Turnpike: This Design Build contract requires a realignment of the westbound SR 836 “Dolphin Expressway” from a point west of SW 97th Avenue to the southbound Homestead Extension of Florida Turnpike (HEFT). This \$36 Million project consists of four vehicular bridges, roadway drainage, earthwork, asphaltic concrete roadway, six MSE retaining walls, retention ponds, roadway lighting, custom overhead sign structures, and tree relocations. Turnpike coordination was required to set beams and deck.

Project Information

Owner: Miami Dade Expressway Authority

Reference: Valentine Onuigbo, P.E. (305)416-1280, Previous Project Manager now with City of Miami, vonuigbo@miamigov.com

Project Dates: 2003 - 2005

Construction Cost: \$39 Mil.

Intelligent Traffic Systems (ITS):

CIMA’s ITS Project Experience:

FDOT’s D-4 I-95 Express Lane Phase II: Fin: 422796-1/2-52-01, Construction of the Phase 2 of 95 Express began in November 2011, will last until May 2016. Work includes: installing Intelligent Transportation System (ITS), Tolling components and New Hubs.

MDX 11209.060 SR 112 Open Road Tolling (ORT) Off-System Signing: This project requires the construction of advance ground mounted and overhead signing to provide sufficient warning, guidance, and information to users entering the converted SR 112 Open Road Tolling (ORT) facility. A component of the Project includes the replacement of DMS signs for 95 Express which are impacted by the required SR 112 ORT signing.

FDOT’s Turnpike South Florida AET Phase 4B Conversion: Fin: 415462-6-52-01, Improvements on this project is the modifications to the Hollywood Blvd. and the Griffin Road interchanges to allow for All Electronic Toll Collection (AET).

Project Information

Owner: Miami Dade Expressway Authority

Reference: Orlando Sanchez (305)265-5490, MDX / GEC Construction
Project Manager, osanchez@eaconsult.com

Project Dates: 2014 - 2016

Construction Cost: \$3.7 Mil.



ITS Hub and Tolling Truss

2.2 Organizational Profile and Project Team

The CIMA Engineering Corp. (CIMA) team provides the City of Fort Lauderdale (CFL) and local public agencies (LPAs) with an experienced group of highly qualified key staff members aggregated together into a cohesive team. All team members have CEI and/or LPA experience and the capacity to deliver a full range of multidisciplinary Capital Improvement Projects. CIMA's unique strengths for this contract include:

2.2.1 Team Leader

Contract Manager and Senior Project Engineer Jose A. Gonzalez, PE: With more than 28 years of transportation, utilities and facilities experience is committed to delivering cost-efficient and value-added projects. Jose offers unique insight to construction management systems, processes and staff with his nearly three decades of CEI experience to a multitude of public clients.

Jose is our team's contract manager. He will be the single point of contact and will ensure that our team is ready and poised to respond quickly and efficiently. When contacted, Jose will assess the needs of the project and determine the appropriate project team with the technical expertise required to deliver the task successfully. He will select from a pool of highly experienced personnel, with an average experience level of 15 years in multidiscipline projects.

Proven success in cost effective project delivery: In today's economic climate, adequate funding is scarce. It is critical to stretch every dollar of public funds and ensure that the project results in value. In this proposal, we will discuss several projects, led by CIMA and Senior Project Engineer Jose Gonzalez, where our experience and technical strength led to cost efficiencies and savings.

Proven success in delivering technically unique solutions: The CIMA team has deep bench strength, with the ability to tap into local expertise if required by a unique situation. As construction issues arise

experience and innovation is required. For our past FDOT Phase II Express lane project, MOT phasing was key in increasing the paving production and completing the project on schedule.

Using CIMA's understanding of the local traffic patterns and community concerns, we developed key alternatives in developing work zones and scope from Friday night 9:00pm to Saturdays 1:00pm. This change allowed for an increase in production from 300 tons a night to 900 tons during this period with minimal inconvenience.

Senior Project Engineer (CIMA): Jose A. Gonzalez, P.E. a Professional Engineer in the State of Florida has 28 years of engineering experience and specializes in Construction Engineering, Administration and Inspection services. He has performed these services on over 25 construction projects to include the FDOT, MDX, MDC, MIA and City of Fort Lauderdale and Miami Beach and Seminole Tribe. The following are key qualifications about Mr. Gonzalez in performing the requested services:

- Owners Representative to the City of Fort Lauderdale for the construction of (5) Fire Stations from January 2008 to May 2013.
- Project Engineer on the FDOT's I-95 Phase II Design Build project, a limited access facility included 16 miles of roadway construction and (3) Communication Hub Buildings. November 2011 to June 2016.
- Construction Manager to the Miami Dade County Public Schools for the Remodeling and Improvements of (4) Dade County Schools from July 2015 to August 2016.

Additionally, Mr. Gonzalez when leading a CEI Team on his past projects has excelled in performance. In his most recent MDX Project: 11209.060 OSS ORT Project, he received a client score of 91 of 100 which is outstanding. On his last FDOT Project, Perimeter Road on NW 12 Street, he received a client score of 4.8 out of 5 which is also outstanding.

Mr. Gonzalez, is a Professional Engineer and a Licensed General and Underground Contractor in the State of Florida.

"Our firm's commitment and performance for our clients lead to successful projects which are completed on time and budget."



2.2.2 Management and Organizational Structure

We recognize the challenge of maintaining public safety while stretching funds. CIMA is committed to delivering projects with in time, budget and excellent quality. Our team's management and organization is crafted to meet this commitment and your quality expectations, with a goal of no change orders during construction. The organizational chart demonstrates our chain of command and work flow, which starts with Jose and empowers our team. A description of this management and organizational structure is as follows:

Quality Assurance (QA): Quality is a core value for our team. We understand the need to provide high-quality products. Brandon Baggett, P.E., our QA manager, ensures our team will deliver the project with a quality focus by consistently monitoring our team as they follow quality checks and balances defined in our Quality Management Plan.

Technical Staff: Supporting our Senior Project Engineers, is a core team of highly qualified engineers and technical staff members. All of which have successfully delivered the tasks listed in the scope of services. Our core team is sized to fully accommodate all likely assignments. For each task, we will tailor a specific team with the appropriate level of experience to deliver the assigned projects.

Project Engineer (CIMA): Brandon Baggett, P.E. holds a Bachelors and Master's Degree in Civil Engineering and a Registered Engineer in the State of Florida. Mr. Baggett has 9 Years of Experience working on FDOT projects and served as a Project Engineer on two similar projects such as AET 4B project for the Florida Turnpike and I-595 P3 project. Additionally, he brings key knowledge such as:

- Monthly and Final Estimates Experience.
- ITS Experience.
- CEI Project Management Experience.

Mr. Baggett has extensive experience with all of the software programs that are used for construction management and Primavera scheduling software.

Assistant Project Engineer / Contract Support

Specialist (CIMA): Yarima Morales, E.I. an Engineer in Training in the State of Florida has 6 years of engineering experience. She has 3 years of experience in Construction Engineering, Administration and Inspection services. The following are key qualifications about Ms. Morales in performing the requested services:

- Inspector / Assistant CSS on the FDOT's I-95 Phase II Design Build project, a limited access facility included 16 miles of roadway construction and (3) Communication Hub Buildings. November 2013 to June 2016.
- Assistant Construction Manager to the Miami Dade County Public Schools for the Remodeling and Improvements of (4) Dade County Schools from September 2015 to August 2016.
- CTQP Certified

Additionally, Ms. Morales brings to the Team her project controls experience and will perform the following roles:

- RFI Review and Tracking
- Submittal Review and Tracking
- Monthly Invoicing Review and Payments
- Review of Daily Reports and Tracking
- Change Order Management and Review
- Contract Time Tracking
- Materials Certification
- Final Estimate and Closeout Documents

CEI Senior Inspector / QC Manager / Contract Support

Specialist (CIMA): Dwayne Benitez has 11 years of engineering experience in Construction Engineering, Administration and Inspection services. He has performed these services on over 13 construction projects to include the MDX and FDOT. The following are key qualifications about Mr. Benitez in performing the requested services:

- FDOT Inspector on FDOT's Miami Intermodal Center (MIC) March 2007 to December 2007 for the Facility Access Ramps and Foundations.
- Owners Representative Inspector to the City of Fort Lauderdale for the construction of (5) Fire Stations from June 2009 to August 2010.
- Contract Support Specialist on the FDOT's I-95 Phase II Design Build project, a limited access facility included 16 miles of roadway construction and (3) Communication Hub

Buildings. November 2011 to June 2016.

- CTQP Certified

Additionally, Mr. Benitez brings to the Team his inspection experience and will perform the following roles:

- Site Work Structure Inspections
- Civil Site and Roadway Inspections
- Water and Sewer Inspections
- FDEP Erosion Control Inspections
- Daily Project Reporting
- Environmental Compliance

CEI Roadway / Electrical / ITS / Lighting Sr. Inspector (CIMA): James Bard 11 years of engineering experience in Construction Engineering, Administration and Inspection services. He has performed these services on over 9 construction projects to include the MDX and FDOT. The following are key qualifications for Mr. Bard:

- Senior Inspector on the FDOT's I-95 Phase II Design Build project, a limited access facility included 16 miles of roadway construction. This project included new lighting, inspection of the ITS Systems, Toll Gantry Collection Systems, CCTV Systems, DMS installations, Overhead Sign Structures and (3) Communication Hub Buildings.
- Senior Inspector on the FTE All Electronic Tolling Conversion which included Roadway Ramp Construction, Lighting, ITS Systems, Tolling Gantries and (3) Communication Hubs.
- CTQP and IMSA Certified

Additionally, Mr. Bard brings to the Team inspection experience and will perform the following roles:

- Roadway Inspections
- Building Electrical Inspections
- ITS Installation Inspections
- DMS Installation Inspections
- ITS Equipment Shop, Stand Alone and performance testing.
- Verification Testing during integration process.
- Daily Project Reporting

Secretary / Clerk (CIMA): Viviana Vindel has 10 years

of experience in clerical, document control and EEO auditing on construction projects. She has performed these services for the FDOT, Seminole Tribe and City of Fort Lauderdale projects, also FDOT LAP Certified.

Senior Roadway / Structures Inspector: Mr. Vladimir Melguizovski, E.I., is a Sr. Inspector. / Project Administrator. Mr. Melguizovski is a graduate Civil Engineer with a Masters in Construction Management and is a Certified Engineer Intern in the State of Florida. He has 16 years of experience in the CE&I and Construction Management (CM) profession. He has extensive experience on both bridge and roadway projects and most recently provided these services on FDOT's District 4 Quadrille Blvd Project, Commercial Blvd Resurfacing project and I-95 Express Lane Phase II project. His specializations include concrete, asphalt, earthwork, QC management, advanced MOT, drainage, drilled shaft inspection, storm water and erosion control, and final estimates.

Additionally, he brings key knowledge to such as:

- Monthly and Final Estimates Experience.
- Materials Certification Experience.
- Constructability reviews
- Utility coordination and inspections.

Roadway / Utilities Inspector: Mr. Douglas Bravo is an inspector. He has 5 years of experience providing QC and VT on many projects throughout south Florida.

- Utility Inspector for Miami Dade Water and Sewer.
- Roadway inspector for the AET 4B conversion for the Florida Turnpike Enterprise and Seminole Tribes of Florida Phase 1 and 3.

Additionally, he brings key knowledge such as:

- Material Testing Experience
- Project documentation.
- Roadway Inspections
- Water and Sewer Inspections
- FDEP Erosion Control Inspections
- Daily Project Reporting
- Environmental Compliance

3.0 Approach to Scope of Work

CIMA will work hard to resolve any construction issues in the field at the lowest level possible. With a partnering approach, we will foster a good working relationship with the contractor(s) from day one, as well as with the City's Project Manager, to help keep the project moving forward always.

If at any time, an impasse has been reached in the field, and an issue must be escalated to the City, CIMA will provide the City with the necessary details in a clear, concise, and professional format.

We pride ourselves in providing our clients with information and sound recommendations to keep projects on time and within budget, while also providing the maximum safety to the public.

CIMA has outlined below our anticipated project tasks and deliverables about administration of this contract. A strict adherence to these steps has enabled our CEI teams in the past to complete all projects with outstanding results.

3.1 Pre-Construction Activities:

Establish contact with Contractor
Establish contact and coordination with utilities.
Obtain ROW agreements
Pre-Construction meeting with Contractor.
Perform pre-construction field survey activities.
Obtain pre-project photo documentation/video
Submit CEI quality management plan to City and request approval of proposed staffing
Review project requirements with inspection staff (critical requirement guide lists, specifications, plans, etc.) and set up field books
Develop file system and document control guidelines
Set up correspondence distribution lists
Review Contractor's schedule, Quality Control (QC) Plan, and other pre-construction submittals (shop drawings, etc.)
CEI kickoff meeting with City and EOR.

3.2 Construction Activities:

Once the day-to-day construction activities begin, the following items will be part of our routine services to ensure the Contractor provides the best quality of construction to Fort Lauderdale and the City's risks for unnecessary costs or claims are minimized to the lowest extent possible. Each activity can be described in detail, but has been limited to a bulleted list.

Pre-activity meetings for all construction phases
Weekly progress meetings
Monthly CEI status report/invoicing
Daily work reports/weekly engineer's summaries
Adjacent project coordination
Documentation
Utility coordination for adjustments or protection
Local homes and business protection
Project Administration and coordination with CFL.
Construction Inspection and Verification Testing paving, plant, concrete, drainage, soils and aggregate, earthwork, nuclear gauge density testing, SWPPP, lighting, signals and landscaping
Weekly review of MOT and NPDES reports
Environmental permits and endangered species monitoring
Photographs and video documentation
Schedule review, claims avoidance, dispute resolution
Safety monitoring and reporting
Negotiate contract changes and value engineering changes
Shop drawings
Quality assurance reviews
Progress payments (quantities tracking, stockpiled materials, sub payment monitoring)
Plan revisions/As-builts
Distribution of correspondence
Inspection records (MOT, field books, quantities, erosion control, deficiencies, daily diary)
Contractor's payroll, employee interviews, contract compliance with EEO, DBE, OJT
Periodic night inspections

3.3 Post Construction Activities:

Post construction activities will be a continuation of the work efforts started at the pre-construction phase. The project team's efforts from pre-construction through post-construction will culminate in successful completion of the project:

Final acceptance.
Final records.
Close all Claims
Project certification.
Preparation and submittal of certified final estimate
Offer of final payment
Submit signed and sealed as-built drawings provided by contractor and reviewed by our Contract Manager
Project close-out meeting
Summarize outstanding issues and provide support for closeout of those issues
Provide hard and electronic copies of all project correspondence and documentation for County archives

3.4 EEO/FTA Compliance:

CIMA has extensive experience in completing CEI projects that include full and/or partial federal funds. Whenever federal funds are included in a project, very specific criteria must be met during the project to ensure compliance with federal laws.

CIMA's approach in monitoring EEO/FTA compliance is to make sure the Contractor is clearly aware of all requirements from the first meeting and to make weekly verification of the submittals to ensure the procedures are followed to the letter. Any lapses in procedure will result in a notice of non-compliance and, should it be warranted, progress payments will be withheld until the requirements are met in a timely fashion.

Wage Rates: The Contractor needs to be aware that per their contract, minimum wage rates have been established for positions relative to the construction project. The wage rates applicable to the contract will likely be controlled by the current wage rates as determined by U.S. Department of Labor (USDOL), as modified up through ten days prior to the opening of bids. During the project the CEI team will conduct field interviews of construction staff in random positions and report their answers to wage rate questions. The Contractor will likely also be required to provide certified payrolls on a weekly basis for wage rate verifications.

Buy American Steel: For federal aid contracts, only use steel and iron produced in the United States, in accordance with the Buy America provisions of 23 CFR 635.410, as amended. CEI will assist the Contractor to answer questions on issues as they arise, based on the limited values allowable by Specifications.

Equal Employment Opportunity (EEO) Acts: CEI and Contractors need to have in place programs to demonstrate commitment to the EEO programs. Prior to project start, the program information will be reviewed for acceptance and the responsible party for each entity will be named. The Contractor will be required to have an on-site informational board to present construction project opportunities and wage information for the public to review. Summary data for work place population data will be available and/or reported for review.

3.5 Plans Review:

CIMA will perform an exhaustive review of the plan sets and include specific constructability concerns/challenges in our proposal to you. Identification and awareness of these items prior to construction affords the opportunity for affected parties to mitigate the impacts. On medium to large scale projects, the EOR can be consulted on plan issues for clarification. CIMA is committed to working with the City and the Contractor(s) to recommend field adjustments as necessary to mitigate some of the constructability issues identified in design plans. If design plans for these projects will be developed while we are under contract as the CEI, we can provide this important constructability review of the plans prior to going out to bid.

3.6 Looking Ahead:

We firmly believe that remaining proactive and always looking ahead for the next project obstacle throughout the duration of the project is critical to delivering a successful project on time while meeting the requirements of the contract. We will continue reviewing contract documents to maintain this proactive approach. We will remain in constant contact with the City's Project Manager with the status of the progress, keeping them abreast of

project issues. All issues involving time and money will be presented to the City with multiple solutions, the benefits and consequences of each solution, and our recommendation as to how we would proceed.

3.7 Materials and Testing Services:

The Materials Testing and Acceptance services required for this project will be coordinated through the City's Geotechnical Laboratory. We will begin the Materials Testing and Acceptance process by reviewing the Sample Testing and Reporting Guide. We will ensure the Guide is comprehensive and correlates with the Final Plans list of pay items. For those materials requiring sampling and testing for acceptance our staff will utilize a standard spreadsheet for the entry of Quality Control (QC) test results performed by the contractor, Verification (V) test results performed by CIMA as the CEI and, Resolution (R) test results should the need arise.

The noted Materials Testing results will also be located on the Sharepoint site so the City's staff may view those results at their convenience. Other materials incorporated in to the project may not be accepted based on sampling and testing results. Rather, they may be accepted based on a written certification, certified mill analysis, FDOT label or stamp, FDOT Qualified Product List (QPL) or supplier. CIMA is thoroughly familiar with all these processes and we currently manage jobs in South Florida utilizing these methods.

3.8 Inspections:

Our CEI inspection staff will observe, inspect and report daily Contractor construction activities to ensure he is performing the work with strict adherence to the contract documents, plans, specifications and special provisions and the project is constructed in reasonable conformity with such documents. Our CEI staff will document these observations and inspection activities in a Daily Work Report (DWR). Each inspector will prepare a DWR on their laptop for each day, report on any visits to the job site by others and report on each separate contractor work activity, such as the placement of embankment, subgrade, base or asphalt work on the roadway or storm water pipe placement or utility relocation work. The intent of

the DWR is to provide the CIMA Engineers with a true picture of what occurs each day on the project site. When a quality assurance issue or defect is observed by our CEI inspection team, the inspector will immediately notify the Contractor of the issue. The inspector will also make a written notation in his or her DWR. Once the issue is remedied, the inspector will make note of such. If the issue is not resolved within two hours, the CIMA inspector will escalate the issue to the CIMA PA, who escalates to the Contract Manager and finally to the City's designated PM. For record keeping purposes, DWR's will be placed on the Sharepoint site and access will be made available to the City's Project Manager and Staff for their review and use.

3.9 On-Site Project Safety:

CIMA has a corporate commitment to Safety. Our team begins each meeting with a safety moment to remind each of our project team members just how important safety is in our daily lives. Our Project Management Plan always includes a Project Health and Safety Plan (HSP) and each plan incorporates relevant Job Safety Activities (JSA's) that are appropriate for each project.

3.10 Maintenance of Traffic:

A key area we focus on from a safety perspective is the project's Maintenance of Traffic and the project's Traffic Control Plan. CIMA's role is to monitor and inspect the Contractor's Work Zone Traffic Control Plan (WZTCP) and review modifications to the Work Zone Traffic Control Plan. The Contractor is required to retain a Professional Engineer and prepare a detailed Traffic Control Plan signed and sealed by a qualified Professional Engineer licensed in Florida.

This Contractor WZTCP is to be submitted to the Owner for Review and Approval. It is incumbent on the Contractor to maintain traffic flow through the area especially during these activities in which a flagging operation is being conducted and avoid undue traffic delays. CIMA will work closely with the Contractor prior to the initiation of the flagging operations to help support their efforts to keep traffic moving through the project limits.

3.11 Project Closeout:

As the project moves closer to completion CIMA will ensure the following duties are monitored closely and accomplished. Verify the requirements for reduction in retainage and obtain surety consent as needed. Verify monthly the Contractor is properly updating the as-built documents for the work. Please note that submission of as-builts and acceptance of same by the Engineer is precedent to Final Acceptance according to the Standard Specifications. Therefore, we will encourage the Contractor to remain vigilant in this regard.

CIMA will ensure electronic record drawings are received and review same for accuracy. We will also review close out documents for completeness and accuracy, to include but not be limited to as-built drawings, shop drawings, Operations and Maintenance (O&M) Manuals and warranties. Where possible, CIMA makes every effort to “final as we go” so that when we reach the final weeks of the project, much of this documentation of the work has already been completed and we have finalized all elements of the work possible.

3.12 Environmental Permits:

Another key area for completion at job's end is submittal of environmental as-built drawings for the Southwest Florida Water Management District (SWFWMD) and if required, the U.S. Army Corps of Engineers (USACE). Their requirements vary somewhat from those of the rest of the job and it is our practice to notify the agencies prior to the end of the project to review the requirements of the Permit to ensure a smooth acceptance process through them.

3.13 Warranty Services:

Finally, once the project is accepted and paid off, there remains the management of the Warranty process. CIMA will provide a binder and a CD to the City documenting the relevant sections of the contract which include warranty requirements.

It will also include the objective measurable criteria used to determine if a warranty issue applies, which items are under warranty and the duration for which they are warrantied.

We will also conduct a review and training session with appropriate County staff regarding how to use the warranty information. At that time, we will arrange for contact persons and contact information so the City can notify CIMA should a warranty issue develop. We shall act as the liaison between the City and the Contractor when warranty requests arise to coordinate that communication. We shall assist the City in deciding of the appropriate corrective action and provide notice to the Contractor of items requiring warranty action. We shall perform related duties as assigned.

3.14 Communication:

Our approach will emphasize communication to make contract components seamless. By providing you with a local team and a proactive Contract Manager, communication can remain fluid, whether in person, via email, or by phone. There are many moving parts in the task work order process for CEI Inspection work and communication can be a challenge.

However, our experienced senior inspectors also offer the wisdom of many years working in the construction industry on jobs and the skills to “build the job mentally before the contractor builds it” to avoid delays.

The CIMA Team is committed to thorough and continuous communication with our project partners, including the City and the Contractor. Communication is the key to a successful project and begins at contract award. We will contact the selected Contractor to introduce our team and follow up the conversation by sending a letter or email identifying submittals that need to be received prior to beginning construction. Every member of our team will foster a partnering relationship with the Contractor. If we can keep the Contractor on schedule while adhering to the contract and our high-quality standards, frivolous claims can be avoided. We believe in face-to-face communication and an open dialogue. From the kick-off meeting to the close-out meeting, our team will be there to provide high level and reliable communication. Our team also understands the importance of flexibility. If one of our partners prefers a specific method of communication, we will accommodate those requests without hesitation.

All our staff is equipped with cell phones, laptops with wireless internet access, digital cameras, printers, and scanners, effectively creating a mobile office in their vehicles for uninterrupted communication abilities. Our lead team members have smart phones so communication from the field can be instantaneous.

All staff will report for service with their “mobile office” and required testing equipment for the anticipated work effort such as concrete, asphalt or earthwork. They will have the inspection contract documents including but not limited to plans, specs, guide lists, manuals, field books, and forms. We utilize a deployment checklist that helps ensure staff are fully prepared for the task at hand.

3.15 Public Information:

CIMA is very familiar with the importance of communication with the public. We will facilitate this communication in any format the City prefers, but will ensure that lane closures, sidewalk closures, major construction activities, or other impacts to the public are timely communicated and disseminated to our public stakeholders. It is important for the community to feel like they are part of the project and that we are taking their concerns into consideration. Not only do we need to be concerned with the pedestrians and motorists, but neighboring businesses that could potentially be impacted by these projects. Keeping the neighbors informed well in advance of these activities will help foster good relationships to keep the project moving on schedule.

3.16 Expenditures and Budget Maintenance:

CIMA has an excellent track record with budget management

– we believe early planning is a key factor in keeping projects moving forward, within budget, and with finding issues before they occur. Our Project Engineer will track expenditures as each project progresses, make necessary budget adjustments to ensure proper funding for each task, and take care of any other miscellaneous budget items.

3.17 Schedule Control:

As noted above, CIMA has the controls in place to maintain both the schedule and budget for this project. The daily observation of construction activities will be compared to the critical items list as well as the Contractor’s two-week work schedule look-ahead. Any noted slippage of the Contractor’s schedule efforts will be brought to the attention of the Project Engineer who will coordinate with the Construction Superintendent to determine the cause of the slippage.

Our team will work with the Contractor to assist him in maintaining his schedule, and will coordinate the inspection team to meet the demands of the items being constructed, with increases or decreases to staffing levels being adjusted weekly.

CIMA will monitor its schedule using weekly forecasts of inspection staff levels and monthly summaries of completed activities. The City’s Project Manager will be aware of all inspection needs, forecasted and past. With the Contractor’s compliance with the City’s project schedule, our team will meet the City’s CEI schedule. Monthly status reports will be provided with each invoice.

The CIMA Team’s proven issue-driven approach will achieve schedule and budget compliance on any task work order with minimum need for County staff involvement. CEI stands for Construction Engineering and Inspection, and the CIMA Team is proud to claim that Engineering is valued, practiced, and demanded on all our CEI efforts. Schedules and schedule updates are closely reviewed. Construction problems are analyzed and solutions are proposed on RFIs.

3.0 References

CIMA’s reference information is in section 2.1.1 of this Statement of Qualification.

4.0 Minority/Women (M/WBE)

CIMA’s is proposing an 80% Minority Team of DBE Firms. Below is the FDOT’s Web focus certification report for each of the participating firms.

Florida UCP DBE Directory

Number of Records Returned: 1

Selection Criteria:

Vendor : CIMA ENGINEERING CORP

Vendor Name: [CIMA ENGINEERING CORP](#)

DBE Certification: CERTIFIED

MBE Certification: Certified

DBA:

Former Name:

Business Description: ENGINEERING SERVICES

Mailing AddressJ: 3313 W. COMMERCIAL BLVD.
SUITE 113
FT. LAUDERDALE, FL 33309-

Contact Name: JOSE A GONZALEZ

Phone: (954) 581-1881

Fax: (954) 337-0301

Email: JOSEAGONZALEZ@CIMAEMAIL.COM

ACDBE Status: N

Statewide Availability: Y

Certified NAICS

541330 Engineering Services

Florida UCP DBE Directory

Number of Records Returned: 1

Selection Criteria:

Vendor : GCES ENGINEERING SERVICES LLC

Vendor Name: [GCES ENGINEERING SERVICES LLC](#)

DBE Certification: CERTIFIED

MBE Certification: Certified

DBA:

Former Name:

Business Description: ENGINEERING, GEOTECHNICAL, QC INSPECTION, TESTING, LABORATORY SERVICES

Mailing AddressJ: 10860 NW 138TH ST UNIT 4
HIALEAH GARDENS, FL 33018-

Contact Name: ALEJANDRO R MONTENEGRO

Phone: (305) 964-0669

Fax: (305) 596-5392

Email: GCES@GCSEENGINEERING.COM

ACDBE Status: N

Statewide Availability: Y

Certified NAICS

541330 Engineering Services

541340 Drafting Services

541380 Testing Laboratories

541620 Environmental Consulting Services

Florida UCP DBE Directory

Number of Records Returned: 1

Selection Criteria:

Vendor : MONARCH LANDSCAPE ARCHITECTURE, LLC

Vendor Name: [MONARCH LANDSCAPE ARCHITECTURE, LLC](#)

DBE Certification: CERTIFIED

MBE Certification:

DBA:

Former Name:

Business Description: LANDSCAPE ARCHITECTURE ARBORIST SERVICES

Mailing AddressJ: 4512 SW 37TH AVENUE
DANIA BEACH, FL 33312-

Contact Name: SHEA HANSEN

Phone: (954) 703-0396

Fax:

Email: SHANSEN@MONARCHLADDESIGN.COM

ACDBE Status: N

Statewide Availability: Y

Certified NAICS

541320 Landscape Architectural Services

561730 Landscaping Services

5.0 Subconsultants

CIMA's is joined by the following team of excellent subconsultant for this contract:



Inspection and Surveying Support:

Keith and Associates, Inc., is a multi-disciplined consulting engineering firm headquartered in Pompano Beach, Florida with additional offices in Miami-Dade, Broward, Palm Beach, St. Lucie and Orlando. They provide civil engineering, traffic engineering, comprehensive planning, surveying and mapping, subsurface utility engineering (SUE), landscape architecture, BIM/VDC and construction management services.

The firm was founded on the principle of achieving success by combining client-oriented business practices with the latest technology and a staff of experienced and talented professionals.



Materials Testing: (DBE Firm)

GCES Engineering Services, LLC. (GCES) was established in 2012 to provide geotechnical engineering, construction quality control and related engineering services to architects, engineers, contractors, owners and governmental agencies in South Florida and throughout the state.

Designing and building public and private facilities necessitates a creative approach to engineering. At GCES, their experienced team of professionals work together to develop solutions - solutions that respond to clients' needs while consistently meeting budget time constraints. They are very proud that their core team is committed and produces a high-quality work.



Landscaping Inspections: (DBE Firm)

Monarch Landscape Architecture (Monarch) is a landscape architecture firm that specializes in all landscape architecture aspects of transportation projects. Monarch is led by principal Shea Hansen, who is a Florida Registered Landscape Architect and an ISA Certified Arborist, and who has over 11 years of experience in the industry. Shea has performed services for the FDOT for over a decade and spent four years as an in-house consultant working under one of the Department's District Landscape Architects. Shea is familiar with all aspects of landscape architecture projects designed, constructed and maintained by the Department. The types of services Monarch provide includes: plan and permit reviews, inspection services, maintenance reviews, progress reporting, site analysis, site planning, conceptual designs, presentation graphics, planting plans, hardscape plans, site amenity plans, construction detailing, specification writing, permit processing, cost estimating, tree identification, tree surveys, nursery visits, tree inventories and tree relocation/mitigation plans.

When starting a landscape inspection, we start by verifying that field conditions comply with the project plans and specifications. When we see specifications that may be problematic later-on, we take a proactive approach by immediately offering applicants and contractors better solutions and options that meet the plan requirements. Monarch stays up-to-date on issues regarding various landscape materials (grades and standards, proper root structure, nursery availability, pests and diseases) that may impact projects. Our inspections also include arborist services, providing information on proper procedures when canopy or root pruning existing trees. Irrigations systems are inspected for proper pipe coverage, zoning, equipment, spray coverage and avoidance of overspray onto hardscapes. Staff included for this project are certified and licensed as landscape inspectors, arborists and landscape architects.



MIA Perimeter Road Reconstruction



TAB 1– SF 330

ARCHITECT - ENGINEER QUALIFICATIONS

PART I - CONTRACT-SPECIFIC QUALIFICATIONS

A. CONTRACT INFORMATION

1. TITLE AND LOCATION *(City and State)*

Construction Engineering and Inspection Services for Downtown Mobility Hub Project

2. PUBLIC NOTICE DATE

March 30, 2018

3. SOLICITATION OR PROJECT NUMBER

RFQ # 12135-986

B. ARCHITECT-ENGINEER POINT OF CONTACT

4. NAME AND TITLE

Jose A. Gonzalez, President

5. NAME OF FIRM

CIMA Engineering Corp.

6. TELEPHONE NUMBER

(954) 581-1881 Ext 101

7. FAX NUMBER

(954) 581-1881

8. E-MAIL ADDRESS

joseagonzalez@cimaemail.com

C. PROPOSED TEAM

(Complete this section for the prime contractor and all key subcontractors.)

	<i>(Check)</i>			9. FIRM NAME	10. ADDRESS	11. ROLE IN THIS CONTRACT
	PRIME	J-V PARTNER	SUBCON-TRACTOR			
a.	<input checked="" type="checkbox"/>	<input type="checkbox"/>	<input type="checkbox"/>	CIMA Engineering Corp. <input type="checkbox"/> CHECK IF BRANCH OFFICE	3313 W. Commercial Blvd. Suite 113 Fort Lauderdale, FL 33309	Construction Engineering and Inspection
b.	<input type="checkbox"/>	<input type="checkbox"/>	<input checked="" type="checkbox"/>	Keith and Associates, Inc. <input type="checkbox"/> CHECK IF BRANCH OFFICE	301 E. Atlantic Blvd. Pompano Beach, Fl. 33060	Construction Engineering and Inspections / Surveying
c.	<input type="checkbox"/>	<input type="checkbox"/>	<input checked="" type="checkbox"/>	GCES Engineering Services, LLC. <input type="checkbox"/> CHECK IF BRANCH OFFICE	10860 NW 138 St. Hialeah Garden, Fl. 33018	Materials Testing
d.	<input type="checkbox"/>	<input type="checkbox"/>	<input checked="" type="checkbox"/>	Monarch Landscaping Architectural, LLC. <input type="checkbox"/> CHECK IF BRANCH OFFICE	4512 SW 37 Ave, Fort Lauderdale, Fl. 33312	Landscaping Inspection
e.	<input type="checkbox"/>	<input type="checkbox"/>	<input type="checkbox"/>	<input type="checkbox"/> CHECK IF BRANCH OFFICE		
f.	<input type="checkbox"/>	<input type="checkbox"/>	<input type="checkbox"/>	<input type="checkbox"/> CHECK IF BRANCH OFFICE		

D. ORGANIZATIONAL CHART OF PROPOSED TEAM (See Section 30 in Page 21 of this Qualification Package)

RESUMES OF KEY PERSONNEL PROPOSED FOR THIS CONTRACT

(Complete one Section E for each key person.)

12. NAME Jose A. Gonzalez	13. ROLE IN THIS CONTRACT Senior Project Engineer	14. YEARS EXPERIENCE <table style="width: 100%; border: none;"> <tr> <td style="width: 50%; border: none;">a. TOTAL 29</td> <td style="width: 50%; border: none;">b. WITH CURRENT FIRM 18</td> </tr> </table>		a. TOTAL 29	b. WITH CURRENT FIRM 18
a. TOTAL 29	b. WITH CURRENT FIRM 18				
15. FIRM NAME AND LOCATION (City and State) CIMA Engineering Corp., (Fort Lauderdale, Florida)					
16. EDUCATION (DEGREE AND SPECIALIZATION) Bachelor of Science in Civil Engineering, Florida International University, 1989		17. CURRENT PROFESSIONAL REGISTRATION (STATE AND DISCIPLINE) Professional Engineer, State of Florida No. 47519			
18. OTHER PROFESSIONAL QUALIFICATIONS (Publications, Organizations, Training, Awards, etc.) ATSSA & MOT Certified; Materials Testing and Inspection Certified by FDOT in Asphalt, Concrete, Asphalt and Drill Shafts; Management Certified by FDOT in Quality Control and Final Estimates.					

19. RELEVANT PROJECTS

	(1) TITLE AND LOCATION (City and State)	(2) YEAR COMPLETED	
	MDX's Design-Build of the Dolphin Station Park and Ride Transit Terminal Facility, (Miami, Florida)	PROFESSIONAL SERVICES Ongoing	CONSTRUCTION (If applicable) Ongoing
a.	(3) BRIEF DESCRIPTION (Brief scope, size, cost, etc.) AND SPECIFIC ROLE <input checked="" type="checkbox"/> Check if project performed with current firm CEI Senior Project Engineer. Scope of the work is the design and construction of a new park and ride transit facility and access road within the NW quadrant of the Homestead Extension of the Florida's Turnpike and NW 12th St. interchange. Project cost \$17 million		
	SR-9 I-95 Express Lanes Phase 2 (Broward County, Florida)	PROFESSIONAL SERVICES 2016	CONSTRUCTION (If applicable) 2016
b.	(3) BRIEF DESCRIPTION (Brief scope, size, cost, etc.) AND SPECIFIC ROLE <input checked="" type="checkbox"/> Check if project performed with current firm Project Engineer: Project scope consists of major interstate widening, bridge widening, ITS, Dynamic Message Signs, installation of electronic toll gantries, milling, resurfacing, interstate maintenance and interchange modifications. Construction of (8) MSE walls, Auger Cast Pile Sound Walls, 39 Drill Shaft, 19 Isolated footings and (4) Sound Barrier Walls. The project required the widening of (6) Bridges. Project Cost \$112 million, 18 miles long.		
	CM at Risk Contracts for the School Boards General Bond Program, (Miami, Florida)	PROFESSIONAL SERVICES 2016	CONSTRUCTION (If applicable) 2016
c.	(3) BRIEF DESCRIPTION (Brief scope, size, cost, etc.) AND SPECIFIC ROLE <input checked="" type="checkbox"/> Check if project performed with current firm Construction Manager – Performed construction administration services for Miami Dade County Public Schools on CM at Risk Contracts for the School Boards General Bond Program.		
	Route 1285 Flowing Well Rd, (Brighton County, Florida)	PROFESSIONAL SERVICES 2012	CONSTRUCTION (If applicable) 2012
d.	(3) BRIEF DESCRIPTION (Brief scope, size, cost, etc.) AND SPECIFIC ROLE <input checked="" type="checkbox"/> Check if project performed with current firm Senior Project Engineer for the reconstruction of Route 1285 (Flowing Well Rd) \$314,400.30 at the Seminole Tribe of Florida Brighton Reservation. Including stabilized subgrade, shell rock base, asphalt paving, drainage culverts, swales, pavement markings, traffic signage and grassing. Project Cost \$314,400.30		
	Snake Road and Bridge Project Reconstruction, (Big Cypress Hendry County, Florida)	PROFESSIONAL SERVICES 2011	CONSTRUCTION (If applicable) 2011
e.	(3) BRIEF DESCRIPTION (Brief scope, size, cost, etc.) AND SPECIFIC ROLE <input checked="" type="checkbox"/> Check if project performed with current firm Senior Project Engineer for Seminole Tribe of Florida's \$2.3 million Snake Road and Bridge Project Reconstruction of BIA Route 1281 bridge and approaches and utilities. The work required the demolition of an existing bridge and the construction of a new bridge (100ft span) which includes two traffic and one ATV lane. This bridge required the installation of 18" concrete piles, concrete end bents and a pre-stressed slab units, 6" fiber reinforced concrete deck, concrete barrier walls and approaches.		

E. RESUMES OF KEY PERSONNEL PROPOSED FOR THIS CONTRACT

(Complete one Section E for each key person.)

12. NAME Brandon Baggett, P.E.	13. ROLE IN THIS CONTRACT Quality Assurance/Project Engineer/Scheduling	14. YEARS EXPERIENCE	
		a. TOTAL 11	b. WITH CURRENT FIRM 3
15. FIRM NAME AND LOCATION (City and State) CIMA Engineering Corp. (Fort Lauderdale, Florida)			
16. EDUCATION (DEGREE AND SPECIALIZATION) M.S., Civil Engineering Florida State University, 2008 B.S., Civil Engineering Florida State University, 2006		17. CURRENT PROFESSIONAL REGISTRATION (STATE AND DISCIPLINE) Professional Engineer, State of Florida No. 76986	
18. OTHER PROFESSIONAL QUALIFICATIONS (Publications, Organizations, Training, Awards, etc.) Bridge Coating Inspector – Level I, ACI level I, QC Manager, Drilled Shaft Inspection, Pile Driving Inspection, Final Estimates Levels I & II, Concrete Field Technician Level I, Earthwork Construction Inspection Levels I & II, Asphalt Paving Technician Levels I & II, ACI Concrete, FDOT MOT			

19. RELEVANT PROJECTS

	(1) TITLE AND LOCATION (City and State)	(2) YEAR COMPLETED	
	SR 848 Stirling Road (Fort Lauderdale, Florida)	PROFESSIONAL SERVICES Ongoing	CONSTRUCTION (If applicable) Ongoing
a.	(3) BRIEF DESCRIPTION (Brief scope, size, cost, etc.) AND SPECIFIC ROLE <input checked="" type="checkbox"/> Check if project performed with current firm Project Engineer for the improvements under this contract consist of milling and resurfacing, roadway and median widening, bike lanes, detectable warnings, countdown timers for pedestrian crosswalks, vehicle detection systems, traffic monitoring sites, guardrail relocation and new anchorage assemblies, drainage improvements, overhead motorist guide signs, ITS, lighting, replacing span-wire signalization with mast arms, signing and pavement markings and ATMS improvements along SR 848 (Stirling Rd.). Project cost: \$4.6 Mil.		
	Turnpike All Electronic Tolling Project Phase 4B (Broward County, Florida)	PROFESSIONAL SERVICES 2016	CONSTRUCTION (If applicable) 2016
b.	(3) BRIEF DESCRIPTION (Brief scope, size, cost, etc.) AND SPECIFIC ROLE <input checked="" type="checkbox"/> Check if project performed with current firm Project Engineer. Scope of project includes milling and resurfacing Dolphin Center Ramps, modifying Hollywood Blvd interchange and install tri-chord gantry and new building, modifying Griffin Road Ramps and install cantilever gantry NB and truss span southbound, demo existing buildings & tunnel and install new building, resurface NB on ramp at County Line Road. Associated signalization, drainage, lighting, ITS, utilities, and building structures are included in project limits. Project cost: \$10,628,174.33		
	I-595 Corridor Roadway Improvement, (Broward County, Florida)	PROFESSIONAL SERVICES 2014	CONSTRUCTION (If applicable) 2014
c.	(3) BRIEF DESCRIPTION (Brief scope, size, cost, etc.) AND SPECIFIC ROLE <input type="checkbox"/> Check if project performed with current firm Project Engineer. This project consists of reconstruction of I-595 mainline and all associated improvements to frontage roads and ramps from I-75/Sawgrass Expressway interchange to I-595/I-95 interchange, for a total length along I-595 of approximately 10.5 miles and approximately 2.5 miles on Florida's Turnpike Enterprise. Design Build Total Cost \$1.2 billion.		
	16th/17th Street Reconstruction, (Indian River County, Florida)	PROFESSIONAL SERVICES 2010	CONSTRUCTION (If applicable) 2010
d.	(3) BRIEF DESCRIPTION (Brief scope, size, cost, etc.) AND SPECIFIC ROLE <input type="checkbox"/> Check if project performed with current firm Contract Support Specialist. Project consisted of milling, resurfacing and widening of 16th/17th Street to a five-lane undivided roadway with addition of four-foot bike lanes in each direction, new signals at existing intersections, signing, pavement markings, landscape and irrigation improvements and new six-foot sidewalks on both sides of road.		
	I-595 over I-75 Southwest and Northeast Connector Ramps, (Sunrise, Florida)	PROFESSIONAL SERVICES 2010	CONSTRUCTION (If applicable) 2010
e.	(3) BRIEF DESCRIPTION (Brief scope, size, cost, etc.) AND SPECIFIC ROLE <input type="checkbox"/> Check if project performed with current firm Assistant Contract Support Specialist. Bridge repair project included epoxy concrete overlay, post tension grouting repair, and expansion joint replacement on segmental bridge number's 860387 and 860511 within I-75/I-595 Interchange.		

E. RESUMES OF KEY PERSONNEL PROPOSED FOR THIS CONTRACT

(Complete one Section E for each key person.)

12. NAME Dwayne Benitez	13. ROLE IN THIS CONTRACT Senior Inspector/QC Manager/Contract Support Specialist	14. YEARS EXPERIENCE	
		a. TOTAL 13	b. WITH CURRENT FIRM 13

15. FIRM NAME AND LOCATION (City and State)
CIMA Engineering Corp. (Fort Lauderdale, Florida)

16. EDUCATION (DEGREE AND SPECIALIZATION) Engineering Technology, ATI Career Training Center, 2002 Associates in Arts (Major in Civil Engineering), Broward College, 2013	17. CURRENT PROFESSIONAL REGISTRATION (STATE AND DISCIPLINE)
---	--

18. OTHER PROFESSIONAL QUALIFICATIONS (Publications, Organizations, Training, Awards, etc.)
Asphalt Paving Level I & II, Earthwork Level I & II, Final Estimates Level I & II, Concrete Level 1, QC Manager, FDOT MOT Intermediate TROXLER – Radiation Safety, ACI Level I, IMSA Certified Inspector, Qualified Stormwater Management Inspector

19. RELEVANT PROJECTS

(1) TITLE AND LOCATION (City and State)	(2) YEAR COMPLETED	
	PROFESSIONAL SERVICES	CONSTRUCTION (If applicable)
a. (3) BRIEF DESCRIPTION (Brief scope, size, cost, etc.) AND SPECIFIC ROLE MDX's Design-Build of the Dolphin Station Park and Ride Transit Terminal Facility, (Miami, Florida)	<input checked="" type="checkbox"/> Check if project performed with current firm Ongoing	
	CEI Senior Project Engineer. Scope of the work is the design and construction of a new park and ride transit facility and access road within the NW quadrant of the Homestead Extension of the Florida's Turnpike and NW 12th St. interchange. Project cost \$17 million	
b. (1) TITLE AND LOCATION (City and State) SR-9 I-95 Express Lanes Phase 2 (Broward County, Florida)	(2) YEAR COMPLETED	
	PROFESSIONAL SERVICES 2016	CONSTRUCTION (If applicable) 2016
b. (3) BRIEF DESCRIPTION (Brief scope, size, cost, etc.) AND SPECIFIC ROLE Contract Support Specialist. Project scope consists of major interstate widening, bridge widening, ITS, Dynamic Message Signs, installation of electronic toll gantries, milling, resurfacing, interstate maintenance and interchange modifications. Construction of (8) MSE walls, Auger Cast Pile Sound Walls, 39 Drill Shaft, 19 Isolated footings and (4) Sound Barrier Walls. The project required the widening of (6) Bridges. Project Cost \$112 million, 18 miles long.	<input checked="" type="checkbox"/> Check if project performed with current firm	
	SR-9 I-95 Express Lanes Phase 2 (Broward County, Florida)	
c. (1) TITLE AND LOCATION (City and State) City of Fort Lauderdale, Fire Stations #35 and #46, (Fort Lauderdale, Florida)	(2) YEAR COMPLETED	
	PROFESSIONAL SERVICES 2011	CONSTRUCTION (If applicable) 2011
c. (3) BRIEF DESCRIPTION (Brief scope, size, cost, etc.) AND SPECIFIC ROLE Responsible for daily documentation of construction activities, materials testing, foundations structures and site work. Project Cost: \$4.00 Mil per station average.	<input checked="" type="checkbox"/> Check if project performed with current firm	
	City of Fort Lauderdale, Fire Stations #35 and #46, (Fort Lauderdale, Florida)	
d. (1) TITLE AND LOCATION (City and State) US-1 Reconstruction from SW 264 ST to SW 288 St., (Miami-Dade County, Florida)	(2) YEAR COMPLETED	
	PROFESSIONAL SERVICES 2011	CONSTRUCTION (If applicable) 2011
d. (3) BRIEF DESCRIPTION (Brief scope, size, cost, etc.) AND SPECIFIC ROLE Quality Control Manager. US-1 Reconstruction from SW 264 ST to SW 288 St. JPA with Miami- Dade Water & Sewer, and included the Installation of 16" Water Main, earthwork, drainage, lighting and signal and Bridge Widening.	<input checked="" type="checkbox"/> Check if project performed with current firm	
	US-1 Reconstruction from SW 264 ST to SW 288 St., (Miami-Dade County, Florida)	
e. (1) TITLE AND LOCATION (City and State) Perimeter Road Reconstruction, (Miami Dade Aviation Miami Dade County, Florida)	(2) YEAR COMPLETED	
	PROFESSIONAL SERVICES 2010	CONSTRUCTION (If applicable) 2010
e. (3) BRIEF DESCRIPTION (Brief scope, size, cost, etc.) AND SPECIFIC ROLE Sr. Inspector/Assistant Contract Support Specialist on the \$4.9 million Perimeter Road reconstruction project from NW 72nd Avenue to NW 57th Avenue. Project includes construction of a four-lane road south of the Miami International Airport. Included installation of a 120" culvert crossing the Venetian canal. Coordination with MIA, TSA, FAA, CSX and Contamination abatement.	<input checked="" type="checkbox"/> Check if project performed with current firm	
	Perimeter Road Reconstruction, (Miami Dade Aviation Miami Dade County, Florida)	

E. RESUMES OF KEY PERSONNEL PROPOSED FOR THIS CONTRACT

(Complete one Section E for each key person.)

12. NAME Vladimir Melguizovski	13. ROLE IN THIS CONTRACT Project Administrator/Senior Inspector	14. YEARS EXPERIENCE <table style="width: 100%; border: none;"> <tr> <td style="width: 50%; border: none;">a. TOTAL 16</td> <td style="width: 50%; border: none;">b. WITH CURRENT FIRM 9</td> </tr> </table>		a. TOTAL 16	b. WITH CURRENT FIRM 9
a. TOTAL 16	b. WITH CURRENT FIRM 9				
15. FIRM NAME AND LOCATION (City and State) CIMA Engineering Corp. (Fort Lauderdale, Florida)					
16. EDUCATION (DEGREE AND SPECIALIZATION) Bachelor of Science in Civil Engineering, Javeriana University Master of Science in Construction Management, Javeriana University		17. CURRENT PROFESSIONAL REGISTRATION (STATE AND DISCIPLINE) Licensed E.I., No. 1100008838			
18. OTHER PROFESSIONAL QUALIFICATIONS (Publications, Organizations, Training, Awards, etc.) FDOT MOT Advance, Asphalt Paving Level I & II, Earthwork Level I & II, Concrete technician I & II, Pile Driving, Drilled Shaft, QC Manager, Final Estimates Level I & II, FDEP Storm water, Erosion					

19. RELEVANT PROJECTS

	(1) TITLE AND LOCATION (City and State)	(2) YEAR COMPLETED	
	SR 848 Stirling Road (Fort Lauderdale, Florida).	PROFESSIONAL SERVICES Ongoing	CONSTRUCTION (If applicable) Ongoing
a.	(3) BRIEF DESCRIPTION (Brief scope, size, cost, etc.) AND SPECIFIC ROLE <input checked="" type="checkbox"/> Check if project performed with current firm Project Engineer for the improvements under this contract consist of milling and resurfacing, roadway and median widening, bike lanes, detectable warnings, countdown timers for pedestrian crosswalks, vehicle detection systems, traffic monitoring sites, guardrail relocation and new anchorage assemblies, drainage improvements, overhead motorist guide signs, ITS, lighting, replacing span-wire signalization with mast arms, signing and pavement markings and ATMS improvements along SR 848 (Stirling Rd.). Project cost: \$4.6 Mil.		
	Installation of a new 12" ductile iron water main, (Miami-Dade County, Florida)	PROFESSIONAL SERVICES 2016	CONSTRUCTION (If applicable) 2016
b.	(3) BRIEF DESCRIPTION (Brief scope, size, cost, etc.) AND SPECIFIC ROLE <input checked="" type="checkbox"/> Check if project performed with current firm Senior Inspector: Miami-Dade Water and Sewer Department, Installation of a new 12" ductile iron water main at Flagler St. including service pipes, backfilling and compacting up to cover zone, new meter boxes, pressure test, chlorination, transfer to new meters and connection to properties. Project Cost: \$5.5 Mil.		
	Quadrille Boulevard from Clematis Street to South Dixie Highway (West Palm Beach County, Florida)	PROFESSIONAL SERVICES 2016	CONSTRUCTION (If applicable) 2016
c.	(3) BRIEF DESCRIPTION (Brief scope, size, cost, etc.) AND SPECIFIC ROLE <input checked="" type="checkbox"/> Check if project performed with current firm Project Administrator Work includes milling and resurfacing the roadway, ADA upgrades, new vehicle detection systems, bus bay removal, buffered bike lanes, and signing and pavement markings. Project Cost: \$1,149		
	SR-870/Commercial Blvd. from W. of White Oak Lane to East of NW 49th Ave, (Broward County, Florida)	PROFESSIONAL SERVICES 2015	CONSTRUCTION (If applicable) 2015
d.	(3) BRIEF DESCRIPTION (Brief scope, size, cost, etc.) AND SPECIFIC ROLE <input checked="" type="checkbox"/> Check if project performed with current firm Contract support specialist Project consists of milling and resurfacing, sidewalk and ADA ramp upgrades, new street lighting, and pavement markings. Final estimate perfectly completed with no errors. Project Cost 1.2 Million		
	SR-9 I-95 Express Lanes Phase 2 (Broward County, Florida)	PROFESSIONAL SERVICES 2016	CONSTRUCTION (If applicable) 2016
e.	(3) BRIEF DESCRIPTION (Brief scope, size, cost, etc.) AND SPECIFIC ROLE <input checked="" type="checkbox"/> Check if project performed with current firm Senior Bridge Inspector. Project scope consists of major interstate widening, bridge widening, ITS, Dynamic Message Signs, installation of electronic toll gantries, milling, resurfacing, interstate maintenance and interchange modifications. Construction of (8) MSE walls, Auger Cast Pile Sound Walls, 39 Drill Shaft, 19 Isolated footings and (4) Sound Barrier Walls. The project required the widening of (6) Bridges. Project Cost \$112 million, 18 miles long.		

E. RESUMES OF KEY PERSONNEL PROPOSED FOR THIS CONTRACT

(Complete one Section E for each key person.)

12. NAME James Bard	13. ROLE IN THIS CONTRACT Senior Roadway/Signal/ITS Inspector	14. YEARS EXPERIENCE	
		a. TOTAL 17	b. WITH CURRENT FIRM 7

15. FIRM NAME AND LOCATION (City and State) CIMA Engineering Corp. (Fort Lauderdale, Florida)
--

16. EDUCATION (DEGREE AND SPECIALIZATION) Florida Junior College, 1980	17. CURRENT PROFESSIONAL REGISTRATION (STATE AND DISCIPLINE)
---	--

18. OTHER PROFESSIONAL QUALIFICATIONS (Publications, Organizations, Training, Awards, etc.) Asphalt Paving I & II, Earthwork I & II, Drilled Shaft, Final Estimates I, QC Manager, FDOT MOT Intermediate TROXLER – Radiation Safety, ACI Level I, IMSA Certified Inspector, Auger cast Pile Inspector, MSE Wall
--

19. RELEVANT PROJECTS

(1) TITLE AND LOCATION (City and State)	(2) YEAR COMPLETED	
SR 848 Stirling Road (Fort Lauderdale, Florida).	PROFESSIONAL SERVICES Ongoing	CONSTRUCTION (If applicable) Ongoing
a. (3) BRIEF DESCRIPTION (Brief scope, size, cost, etc.) AND SPECIFIC ROLE <input checked="" type="checkbox"/> Check if project performed with current firm Project Engineer for the improvements under this contract consist of milling and resurfacing, roadway and median widening, bike lanes, detectable warnings, countdown timers for pedestrian crosswalks, vehicle detection systems, traffic monitoring sites, guardrail relocation and new anchorage assemblies, drainage improvements, overhead motorist guide signs, ITS, lighting, replacing span-wire signalization with mast arms, signing and pavement markings and ATMS improvements along SR 848 (Stirling Rd.). Project cost: \$4.6 Mil.		
SR 80 Intersection, (Palm Beach County, Florida)	PROFESSIONAL SERVICES 2016	CONSTRUCTION (If applicable) 2016
b. (3) BRIEF DESCRIPTION (Brief scope, size, cost, etc.) AND SPECIFIC ROLE <input checked="" type="checkbox"/> Check if project performed with current firm Senior Roadway / Signal Inspector (FDOT D-4) \$500,000 Intersection and signalization improvements and on SR 80 and SR 27 Intersection in Palm Beach County.		
Turnpike All Electronic Tolling Project Phase 4B (Broward County, Florida)	PROFESSIONAL SERVICES 2016	CONSTRUCTION (If applicable) 2016
c. (3) BRIEF DESCRIPTION (Brief scope, size, cost, etc.) AND SPECIFIC ROLE <input checked="" type="checkbox"/> Check if project performed with current firm Project Engineer. Scope of project includes milling and resurfacing Dolphin Center Ramps, modifying Hollywood Blvd interchange and install tri-chord gantry and new building, modifying Griffin Road Ramps and install cantilever gantry NB and truss span southbound, demo existing buildings & tunnel and install new building, resurface NB on ramp at County Line Road. Associated signalization, drainage, lighting, ITS, utilities, and building structures are included in project limits. Project cost: \$10,628,174.33		
SR-9 I-95 Express Lanes Phase 2 (Broward County, Florida)	PROFESSIONAL SERVICES 2016	CONSTRUCTION (If applicable) 2016
d. (3) BRIEF DESCRIPTION (Brief scope, size, cost, etc.) AND SPECIFIC ROLE <input checked="" type="checkbox"/> Check if project performed with current firm Senior Inspector. Project scope consists of major interstate widening, bridge widening, ITS, Dynamic Message Signs, installation of electronic toll gantries, milling, resurfacing, interstate maintenance and interchange modifications. Construction of (8) MSE walls, Auger Cast Pile Sound Walls, 39 Drill Shaft, 19 Isolated footings and (4) Sound Barrier Walls. The project required the widening of (6) Bridges. Project Cost \$112 million, 18 miles long.		
Atlantic Blvd. to Palm Beach County Line, (Palm Beach County, Florida)	PROFESSIONAL SERVICES 2012	CONSTRUCTION (If applicable) 2012
e. (3) BRIEF DESCRIPTION (Brief scope, size, cost, etc.) AND SPECIFIC ROLE <input checked="" type="checkbox"/> Check if project performed with current firm Senior Inspector on Construction Engineering and Inspection Services for Turnpike - Milling and resurfacing from Atlantic Blvd. to Palm Beach County Line.		

E. RESUMES OF KEY PERSONNEL PROPOSED FOR THIS CONTRACT

(Complete one Section E for each key person.)

12. NAME Douglas Bravo	13. ROLE IN THIS CONTRACT Roadway/Utilities Inspector	14. YEARS EXPERIENCE	
		a. TOTAL 6	b. WITH CURRENT FIRM 3

15. FIRM NAME AND LOCATION (City and State) CIMA Engineering Corp. (Fort Lauderdale, Florida)
--

16. EDUCATION (DEGREE AND SPECIALIZATION) Technical School in Civil Construction, 1986 Technology School of Havana.	17. CURRENT PROFESSIONAL REGISTRATION (STATE AND DISCIPLINE)
---	--

18. OTHER PROFESSIONAL QUALIFICATIONS (Publications, Organizations, Training, Awards, etc.) Earthwork Level 1 & 2, ACI Field Testing Technician Level 1, Asphalt Level I & II, CTQP Qualified Sampler, CTQP Concrete, Field Testing Tech, Level 1, Final Estimates Level I, FDOT Inspection Specification Course Hazardous Materials Training, MOT Intermediate
--

19. RELEVANT PROJECTS			
a.	(2) YEAR COMPLETED		
	PROFESSIONAL SERVICES Ongoing	CONSTRUCTION (If applicable) Ongoing	
(3) BRIEF DESCRIPTION (Brief scope, size, cost, etc.) AND SPECIFIC ROLE Furnish and install 6-inch D.I. Force Main			
b.	(2) YEAR COMPLETED		
	PROFESSIONAL SERVICES 2016	CONSTRUCTION (If applicable) 2016	
(3) BRIEF DESCRIPTION (Brief scope, size, cost, etc.) AND SPECIFIC ROLE The project Includes a new sanitary sewer system along with 48 new lateral connections, new waterline system with two new master water meters, 48 sub meters and connections. Also, the construction of a new lift station along with the removal of an existing package sewer plant.			
c.	(2) YEAR COMPLETED		
	PROFESSIONAL SERVICES 2016	CONSTRUCTION (If applicable) 2016	
(3) BRIEF DESCRIPTION (Brief scope, size, cost, etc.) AND SPECIFIC ROLE Inspector. Scope of project includes milling and resurfacing Dolphin Center Ramps, modifying Hollywood Blvd interchange and install tri-chord gantry and new building, modifying Griffin Road Ramps and install cantilever gantry NB and truss span southbound, demo existing buildings & tunnel and install new building, resurface NB on ramp at County Line Road. Associated signalization, drainage, lighting, ITS, utilities, and building structures are included in project limits. Project cost: \$10,628,174.			
d.	(2) YEAR COMPLETED		
	PROFESSIONAL SERVICES 2015	CONSTRUCTION (If applicable) 2015	
(3) BRIEF DESCRIPTION (Brief scope, size, cost, etc.) AND SPECIFIC ROLE Roadway Inspector for re-construction project of \$11.4 million, 2-lane arterial with an adjacent multi-use path. Pavement re-construction, milling and resurfacing, installation of drainage system, utility improvements, channel excavation, side street tie-in, lighting, signing, pavement markings installation of emergency signal and landscaping.			
e.	(2) YEAR COMPLETED		
	PROFESSIONAL SERVICES 2012	CONSTRUCTION (If applicable) 2012	
(3) BRIEF DESCRIPTION (Brief scope, size, cost, etc.) AND SPECIFIC ROLE Quality control Inspector for numerous projects in Miami-Dade County.			

E. RESUMES OF KEY PERSONNEL PROPOSED FOR THIS CONTRACT*(Complete one Section E for each key person.)*

12. NAME Viviana Vindel	13. ROLE IN THIS CONTRACT Resident Compliance Specialist/Document Control	14. YEARS EXPERIENCE	
		a. TOTAL 12	b. WITH CURRENT FIRM 12
15. FIRM NAME AND LOCATION <i>(City and State)</i> CIMA Engineering Corp. (Fort Lauderdale, Florida)			
16. EDUCATION <i>(DEGREE AND SPECIALIZATION)</i> Bachelor Degree in Business Administration, DeVry University, 2008		17. CURRENT PROFESSIONAL REGISTRATION <i>(STATE AND DISCIPLINE)</i>	
18. OTHER PROFESSIONAL QUALIFICATIONS <i>(Publications, Organizations, Training, Awards, etc.)</i> EEO – DBE – OJT & Payrolls Requirements Overview Course, RCS Payroll Monitoring Course.			

19. RELEVANT PROJECTS

	(1) TITLE AND LOCATION <i>(City and State)</i>	(2) YEAR COMPLETED	
		PROFESSIONAL SERVICES	CONSTRUCTION <i>(If applicable)</i>
a.	Director of Administration, (Fort Lauderdale, Florida)	2017	2017
	(3) BRIEF DESCRIPTION <i>(Brief scope, size, cost, etc.)</i> AND SPECIFIC ROLE <input checked="" type="checkbox"/> Check if project performed with current firm Director of Administration performing bookkeeping and administrative assistant duties for CIMA's main office.		
b.	Seminole Tribe of Florida Snake Road - BIA Route 1281	2015	2015
	(3) BRIEF DESCRIPTION <i>(Brief scope, size, cost, etc.)</i> AND SPECIFIC ROLE <input checked="" type="checkbox"/> Check if project performed with current firm Compliance specialist on project responsible for checking sublets and payrolls. Perform interviews on workers to prevent discrimination. Responsible for all document control and distribution of meeting minutes. Scope of project consists of re-construction of \$11.4 million, 2-lane arterial roadway with an adjacent multi-use path. Pavement re-construction, milling and resurfacing, installation of drainage system, utility improvements, channel excavation, side street tie-in, lighting, signing, pavement markings installation of emergency signal and finally landscaping. Four FHWA Audit conducted with no findings.		
c.	Route 1285 (Flowing Well Road), (Brighton County, Florida)	2015	2015
	(3) BRIEF DESCRIPTION <i>(Brief scope, size, cost, etc.)</i> AND SPECIFIC ROLE <input checked="" type="checkbox"/> Check if project performed with current firm Resident Compliance Specialist for the reconstruction of Route 1285 (Flowing Well Road) at the Seminole Tribe of Florida's Brighton Reservation. Project scope included stabilized subgrade, shell rock base, asphalt paving, drainage culverts, swales, pavement markings, traffic signage and grassing.		
d.	Snake Road and Bridge Project, (Big Cypress Hendry County, Florida)	2011	2011
	(3) BRIEF DESCRIPTION <i>(Brief scope, size, cost, etc.)</i> AND SPECIFIC ROLE <input checked="" type="checkbox"/> Check if project performed with current firm Resident Compliance Specialist for Seminole Tribe of Florida's \$2.3 million Snake Road and Bridge Project reconstruction of the BIA Route 1281 bridge, approaches and utilities.		
e.	SR-823/Red Road and SR-823/Flamingo Road (Broward County, Florida)	2008	2008
	(3) BRIEF DESCRIPTION <i>(Brief scope, size, cost, etc.)</i> AND SPECIFIC ROLE <input checked="" type="checkbox"/> Check if project performed with current firm Senior Project Engineer for the \$4.2 million SR-823/Red Road (2.0 Miles) and \$2.5 million SR-823/Flamingo Road (1.3 Miles) reconstruction Project. Included the milling and resurfacing of the roadway with FC-5, guardrail, stripping, and signage improvements.		

E. RESUMES OF KEY PERSONNEL PROPOSED FOR THIS CONTRACT

(Complete one Section E for each key person.)

12. NAME Yarima Morales	13. ROLE IN THIS CONTRACT Assistant Project Engineer/Contract Support Specialist	14. YEARS EXPERIENCE <table style="width: 100%; border: none;"> <tr> <td style="width: 50%; border: none;">a. TOTAL 7</td> <td style="width: 50%; border: none;">b. WITH CURRENT FIRM 4</td> </tr> </table>		a. TOTAL 7	b. WITH CURRENT FIRM 4
a. TOTAL 7	b. WITH CURRENT FIRM 4				
15. FIRM NAME AND LOCATION (City and State) CIMA Engineering Corp. (Fort Lauderdale, Florida)					
16. EDUCATION (DEGREE AND SPECIALIZATION) Bachelor of Science in Civil Engineering - Holguin University of Cuba, 2012		17. CURRENT PROFESSIONAL REGISTRATION (STATE AND DISCIPLINE) Licensed E.I., No. 1100019474			

18. OTHER PROFESSIONAL QUALIFICATIONS (Publications, Organizations, Training, Awards, etc.)

Final Estimates Level I & II, Asphalt Paving Level I & II, Earthwork Level 1 & 2, Concrete Field Tech Level I, Auger Cast Pile Certified, MSE Wall Certified, Surge Protective Devices, Intermediate MOT, Nuclear Safety

19. RELEVANT PROJECTS

	(1) TITLE AND LOCATION (City and State)	(2) YEAR COMPLETED	
	MDX's Design-Build of the Dolphin Station Park and Ride Transit Terminal Facility, (Miami, Florida)	PROFESSIONAL SERVICES Ongoing	CONSTRUCTION (If applicable) Ongoing
a.	(3) BRIEF DESCRIPTION (Brief scope, size, cost, etc.) AND SPECIFIC ROLE <input checked="" type="checkbox"/> Check if project performed with current firm CEI Senior Project Engineer. Scope of the work is the design and construction of a new park and ride transit facility and access road within the NW quadrant of the Homestead Extension of the Florida's Turnpike and NW 12th St. interchange. Project cost \$17 million		
	SR-9 I-95 Express Lanes Phase 2 (Broward County, Florida)	PROFESSIONAL SERVICES 2016	CONSTRUCTION (If applicable) 2016
b.	(3) BRIEF DESCRIPTION (Brief scope, size, cost, etc.) AND SPECIFIC ROLE <input checked="" type="checkbox"/> Check if project performed with current firm Inspector/Associate CSS Project scope consists of major interstate widening, bridge widening, ITS, Dynamic Message Signs, installation of electronic toll gantries, milling, resurfacing, interstate maintenance and interchange modifications. Construction of (8) MSE walls, Auger Cast Pile Sound Walls, 39 Drill Shaft, 19 Isolated footings and (4) Sound Barrier Walls. The project required the widening of (6) Bridges. Project Cost \$112 million, 18 miles long.		
	Miami-Dade County Public Schools General Obligation Bond projects, (Miami-Dade County, Florida)	PROFESSIONAL SERVICES 2016	CONSTRUCTION (If applicable) 2016
c.	(3) BRIEF DESCRIPTION (Brief scope, size, cost, etc.) AND SPECIFIC ROLE <input checked="" type="checkbox"/> Check if project performed with current firm Assistant Project Manager Scope of work includes new exterior painting, millwork and lighting improvements, HVAC system upgrades to energy-efficient systems, plumbing and fire alarm upgrades, portable building removal; resurfacing and redesign of the courtyard play area, new Pre-K playground, and landscape/civil work.		
	Administrative Assistant for Century Home Design	PROFESSIONAL SERVICES 2013	CONSTRUCTION (If applicable) 2013
d.	(3) BRIEF DESCRIPTION (Brief scope, size, cost, etc.) AND SPECIFIC ROLE <input type="checkbox"/> Check if project performed with current firm Duties include organize and provide documents, reports and information to departments and external clients; create and maintain active files, order office supplies and equipment; schedule and manage meetings; maintain files, folders and weekly schedules for employees; manage front office operations, calendars and plan events.		
	Projects & Engineering Technician for Engineering Works Construction Company No.17	PROFESSIONAL SERVICES 2012	CONSTRUCTION (If applicable) 2012
e.	(3) BRIEF DESCRIPTION (Brief scope, size, cost, etc.) AND SPECIFIC ROLE <input type="checkbox"/> Check if project performed with current firm Duties include compute load and grade requirements, water flow rates, and material stress factors to determine design specifications; direct construction, operations, and maintenance activities at project site; estimate quantities and cost of materials, equipment, or labor to determine project feasibility; test soils and materials to determine the adequacy and strength of foundations, concrete, asphalt, or steel		

F. EXAMPLE PROJECTS WHICH BEST ILLUSTRATE PROPOSED TEAM'S QUALIFICATIONS FOR THIS CONTRACT <i>(Present as many projects as requested by the agency, or 10 projects, if not specified. Complete one Section F for each project.)</i>	20. EXAMPLE PROJECT KEY NUMBER 1
---	-------------------------------------

21. TITLE AND LOCATION <i>(City and State)</i> MDX's Design-Build of the Dolphin Station Park and Ride Transit Terminal Facility, (Miami, Florida)	22. YEAR COMPLETED PROFESSIONAL SERVICES Ongoing	CONSTRUCTION (If applicable) Ongoing
---	--	---

23. PROJECT OWNER'S INFORMATION

a. PROJECT OWNER Miami-Dade Expressway Authority	b. POINT OF CONTACT NAME Claudio Diaferia	c. POINT OF CONTACT TELEPHONE NUMBER (305) 637-3277
---	--	--

24. BRIEF DESCRIPTION OF PROJECT AND RELEVANCE TO THIS CONTRACT *(Include scope, size, and cost)*

Miami Dade County Transit Dolphin Station Park and Ride: CIMA is providing, CEI services for a Design Build Contract for a new park and ride transit facility and access road within the NW quadrant of the Homestead Extension of the Florida's Turnpike and NW 12th St. interchange. The project will support the MDT SR 836 Express Bus Service as well as other planned Express Bus routes and will potentially be used as a terminus or stop for several local bus routes serving the Dolphin Mall and nearby cities of Sweetwater and Doral. This project is a joint agency collaboration between FDOT, Miami Dade County Department of Public Works and being developed by the Miami Dade Expressway Authority. The project includes water and sewer, site work, two hub buildings, bus terminal, parking lot, traffic signal installation, adjacent roadway construction and ITS. Project Cost \$16.9 mil.

25. FIRMS FROM SECTION C INVOLVED WITH THIS PROJECT

a.	(1) FIRM NAME CIMA Engineering Corp	(2) FIRM LOCATION <i>(City and State)</i> Fort Lauderdale, Florida	(3) ROLE CEI
b.	(1) FIRM NAME	(2) FIRM LOCATION <i>(City and State)</i>	(3) ROLE
c.	(1) FIRM NAME	(2) FIRM LOCATION <i>(City and State)</i>	(3) ROLE
d.	(1) FIRM NAME	(2) FIRM LOCATION <i>(City and State)</i>	(3) ROLE
e.	(1) FIRM NAME	(2) FIRM LOCATION <i>(City and State)</i>	(3) ROLE
f.	(1) FIRM NAME	(2) FIRM LOCATION <i>(City and State)</i>	(3) ROLE

F. EXAMPLE PROJECTS WHICH BEST ILLUSTRATE PROPOSED TEAM'S QUALIFICATIONS FOR THIS CONTRACT <i>(Present as many projects as requested by the agency, or 10 projects, if not specified. Complete one Section F for each project.)</i>		20. EXAMPLE PROJECT KEY NUMBER 2
21. TITLE AND LOCATION <i>(City and State)</i> Miami Dade County Water and Sewer Capital Improvement Program (Miami-Dade County, Florida)	22. YEAR COMPLETED	
	PROFESSIONAL SERVICES 2017	CONSTRUCTION (If applicable) 2017

23. PROJECT OWNER'S INFORMATION

a. PROJECT OWNER Miami Dade County Water and Sewer	b. POINT OF CONTACT NAME Luis Rojas, Carlos Bravo	c. POINT OF CONTACT TELEPHONE NUMBER (786) 402-1292, (786) 552-4366
---	--	--

24. BRIEF DESCRIPTION OF PROJECT AND RELEVANCE TO THIS CONTRACT *(Include scope, size, and cost)*

Miami Dade County Water and Sewer Capital Improvement Program: CIMA is providing, CEI services for the construction of several new water and sewer projects in Miami Dade County, Florida. The projects range from the installation of watermain and services, sewer installations and force mains. Our services included daily reporting thru the county's document control system, inspections of materials being installed, backfilling operations, pressure testing, chlorination and testing of water lines, MOT inspection, as-build, payments and acceptance of work. Project Cost: \$500k to \$5Mil.

25. FIRMS FROM SECTION C INVOLVED WITH THIS PROJECT

a.	(1) FIRM NAME CIMA Engineering Corp	(2) FIRM LOCATION <i>(City and State)</i> Fort Lauderdale, Florida	(3) ROLE CEI
b.	(1) FIRM NAME	(2) FIRM LOCATION <i>(City and State)</i>	(3) ROLE
c.	(1) FIRM NAME	(2) FIRM LOCATION <i>(City and State)</i>	(3) ROLE
d.	(1) FIRM NAME	(2) FIRM LOCATION <i>(City and State)</i>	(3) ROLE
e.	(1) FIRM NAME	(2) FIRM LOCATION <i>(City and State)</i>	(3) ROLE
f.	(1) FIRM NAME	(2) FIRM LOCATION <i>(City and State)</i>	(3) ROLE

F. EXAMPLE PROJECTS WHICH BEST ILLUSTRATE PROPOSED TEAM'S QUALIFICATIONS FOR THIS CONTRACT <i>(Present as many projects as requested by the agency, or 10 projects, if not specified. Complete one Section F for each project.)</i>		20. EXAMPLE PROJECT KEY NUMBER 3
21. TITLE AND LOCATION <i>(City and State)</i> City of Fort Lauderdale, Fire Department Bond Program, (City of Fort Lauderdale, Florida)	22. YEAR COMPLETED	
	PROFESSIONAL SERVICES 2013	CONSTRUCTION (If applicable) 2013

23. PROJECT OWNER'S INFORMATION

a. PROJECT OWNER City of Fort Lauderdale	b. POINT OF CONTACT NAME Frank Snedaker, Mark Friedman	c. POINT OF CONTACT TELEPHONE NUMBER (954) 561-4180, (954) 344-3883
--	--	---

24. BRIEF DESCRIPTION OF PROJECT AND RELEVANCE TO THIS CONTRACT *(Include scope, size, and cost)*

City of Fort Lauderdale, Fire Department Bond Program: CIMA provided construction management services for Fire Station #3, #29, # 35, # 46 and #49. Our services included the overseeing the daily construction operations and managing both the Contractor and the Architect to ensure completion in a timely and cost-effective manner while achieving a quality product. CIMA's construction management services included daily inspections, resolution of project issues, processing of all RFI's and submittals, construction schedule and payment requisition reviews, Owner/Architect/Contractor meetings, and daily communication with City staff to ensure effective communication on the project. CIMA also was tasked to perform pre-construction and post-construction activities including temporary relocation of facilities, demolition of existing structures, plan and contract review, coordination with all utilities providing services, coordination of permitting, warranty submittal review, review of claims, and submittal of all project files including as-built drawings.

Project Cost: \$1.7 Mil. to \$2.7 Mil.

25. FIRMS FROM SECTION C INVOLVED WITH THIS PROJECT

a.	(1) FIRM NAME CIMA Engineering Corp	(2) FIRM LOCATION <i>(City and State)</i> Fort Lauderdale, Florida	(3) ROLE CEI
b.	(1) FIRM NAME	(2) FIRM LOCATION <i>(City and State)</i>	(3) ROLE
c.	(1) FIRM NAME	(2) FIRM LOCATION <i>(City and State)</i>	(3) ROLE
d.	(1) FIRM NAME	(2) FIRM LOCATION <i>(City and State)</i>	(3) ROLE
e.	(1) FIRM NAME	(2) FIRM LOCATION <i>(City and State)</i>	(3) ROLE
f.	(1) FIRM NAME	(2) FIRM LOCATION <i>(City and State)</i>	(3) ROLE

F. EXAMPLE PROJECTS WHICH BEST ILLUSTRATE PROPOSED TEAM'S QUALIFICATIONS FOR THIS CONTRACT <i>(Present as many projects as requested by the agency, or 10 projects, if not specified. Complete one Section F for each project.)</i>	20. EXAMPLE PROJECT KEY NUMBER 4
---	-------------------------------------

21. TITLE AND LOCATION <i>(City and State)</i> Seminole Tribe of Florida, Snake Road Bridge Replacement and Roadway Re-construction, (Hendry County, Florida)	22. YEAR COMPLETED PROFESSIONAL SERVICES 2015	CONSTRUCTION (If applicable) 2015
--	---	--------------------------------------

23. PROJECT OWNER'S INFORMATION

a. PROJECT OWNER Seminole Tribe of Florida	b. POINT OF CONTACT NAME Richard Pereira, P.E.	c. POINT OF CONTACT TELEPHONE NUMBER (954) 465-5628
---	---	--

24. BRIEF DESCRIPTION OF PROJECT AND RELEVANCE TO THIS CONTRACT *(Include scope, size, and cost)*

Seminole Tribe of Florida, Snake Road Bridge Replacement and Roadway Re-construction: CIMA was the primary consultant for the (2) two phases of the of this road (BIA 814). The existing rural road was reconstructed to an urban section. The project included sidewalks, bike lanes, ATV path, lighting, comfortable and accessible public transportation stops, frequent and safe crossing opportunities, median islands, the first traffic signal in the reservation and more. Also, a new bridge and roadway along with pond construction, channel excavation, earthwork, water and sewer, drainage, asphalt and signage was included. The bridge and roadway is a vital component of access to the Indian Reservation located in the Big Cypress Reserve in Hendry County, FL.

25. FIRMS FROM SECTION C INVOLVED WITH THIS PROJECT

a.	(1) FIRM NAME CIMA Engineering Corp	(2) FIRM LOCATION <i>(City and State)</i> Fort Lauderdale, Florida	(3) ROLE CEI
b.	(1) FIRM NAME	(2) FIRM LOCATION <i>(City and State)</i>	(3) ROLE
c.	(1) FIRM NAME	(2) FIRM LOCATION <i>(City and State)</i>	(3) ROLE
d.	(1) FIRM NAME	(2) FIRM LOCATION <i>(City and State)</i>	(3) ROLE
e.	(1) FIRM NAME	(2) FIRM LOCATION <i>(City and State)</i>	(3) ROLE
f.	(1) FIRM NAME	(2) FIRM LOCATION <i>(City and State)</i>	(3) ROLE

F. EXAMPLE PROJECTS WHICH BEST ILLUSTRATE PROPOSED TEAM'S QUALIFICATIONS FOR THIS CONTRACT <i>(Present as many projects as requested by the agency, or 10 projects, if not specified. Complete one Section F for each project.)</i>	20. EXAMPLE PROJECT KEY NUMBER 5
---	-------------------------------------

21. TITLE AND LOCATION <i>(City and State)</i> FDOT's D-4 I-95 Express Lane Phase II, (Miami Dade and Broward County, Florida)	22. YEAR COMPLETED
	PROFESSIONAL SERVICES 2016 CONSTRUCTION (If applicable) 2016

23. PROJECT OWNER'S INFORMATION

a. PROJECT OWNER Florida Department of Transportation	b. POINT OF CONTACT NAME Albert Salas	c. POINT OF CONTACT TELEPHONE NUMBER (954) 958-7628
--	--	--

24. BRIEF DESCRIPTION OF PROJECT AND RELEVANCE TO THIS CONTRACT *(Include scope, size, and cost)*

FDOT's D-4 I-95 Express Lane Phase II:

Fin: 422796-1/2-52-01, Design Build Contract for Phase 2 of I-95 Express Lanes extension north from the Golden Glades Interchange, in Miami-Dade County, to Broward Boulevard, in Broward County, by converting the existing High Occupancy Vehicle (HOV) lanes into two express lanes in each direction. Other work includes: installing Intelligent Transportation System (ITS) and Tolling components; modifying the Ives Dairy Road interchange; bridge widening at specific locations; and installing new noise walls; MES Walls a bridge approached; New signalization in Miami Dade and Broward County. Project Cost: \$124.2 Mil.

25. FIRMS FROM SECTION C INVOLVED WITH THIS PROJECT

a.	(1) FIRM NAME CIMA Engineering Corp	(2) FIRM LOCATION <i>(City and State)</i> Fort Lauderdale, Florida	(3) ROLE CEI
b.	(1) FIRM NAME	(2) FIRM LOCATION <i>(City and State)</i>	(3) ROLE
c.	(1) FIRM NAME	(2) FIRM LOCATION <i>(City and State)</i>	(3) ROLE
d.	(1) FIRM NAME	(2) FIRM LOCATION <i>(City and State)</i>	(3) ROLE
e.	(1) FIRM NAME	(2) FIRM LOCATION <i>(City and State)</i>	(3) ROLE
f.	(1) FIRM NAME	(2) FIRM LOCATION <i>(City and State)</i>	(3) ROLE

F. EXAMPLE PROJECTS WHICH BEST ILLUSTRATE PROPOSED TEAM'S QUALIFICATIONS FOR THIS CONTRACT <i>(Present as many projects as requested by the agency, or 10 projects, if not specified. Complete one Section F for each project.)</i>	20. EXAMPLE PROJECT KEY NUMBER 6
---	-------------------------------------

21. TITLE AND LOCATION <i>(City and State)</i> MDX 836-12 Design Build Project (Turnpike Flyover) Westbound SR-836 to Florida Turnpike, (Miami-Dade County, Florida)	22. YEAR COMPLETED	
	PROFESSIONAL SERVICES 2005	CONSTRUCTION (If applicable) 2005

23. PROJECT OWNER'S INFORMATION

a. PROJECT OWNER Miami-Dade Expressway Authority	b. POINT OF CONTACT NAME Valentine Onuigho	c. POINT OF CONTACT TELEPHONE NUMBER (305) 416-1280
---	---	--

24. BRIEF DESCRIPTION OF PROJECT AND RELEVANCE TO THIS CONTRACT *(Include scope, size, and cost)*

MDX 836-12 Design Build Project (Turnpike Flyover) Westbound SR-836 to Florida Turnpike: This Design Build contract requires a re-alignment of the westbound SR 836 "Dolphin Expressway" from a point west of SW 97th Avenue to the southbound Homestead Extension of Florida Turnpike (HEFT). This \$36 Million project consists of four vehicular bridges, roadway drainage, earthwork, asphaltic concrete roadway, six MSE retaining walls, retention ponds, roadway lighting, custom overhead sign structures, and tree relocations. Turnpike coordination was required to set beams and deck. Project Cost: \$39 Mil.

25. FIRMS FROM SECTION C INVOLVED WITH THIS PROJECT

a.	(1) FIRM NAME CIMA Engineering Corp	(2) FIRM LOCATION <i>(City and State)</i> Fort Lauderdale, Florida	(3) ROLE CEI
b.	(1) FIRM NAME	(2) FIRM LOCATION <i>(City and State)</i>	(3) ROLE
c.	(1) FIRM NAME	(2) FIRM LOCATION <i>(City and State)</i>	(3) ROLE
d.	(1) FIRM NAME	(2) FIRM LOCATION <i>(City and State)</i>	(3) ROLE
e.	(1) FIRM NAME	(2) FIRM LOCATION <i>(City and State)</i>	(3) ROLE
f.	(1) FIRM NAME	(2) FIRM LOCATION <i>(City and State)</i>	(3) ROLE

F. EXAMPLE PROJECTS WHICH BEST ILLUSTRATE PROPOSED TEAM'S QUALIFICATIONS FOR THIS CONTRACT <i>(Present as many projects as requested by the agency, or 10 projects, if not specified. Complete one Section F for each project.)</i>	20. EXAMPLE PROJECT KEY NUMBER 7
---	-------------------------------------

21. TITLE AND LOCATION <i>(City and State)</i> MDX 11209.060 SR 112 Open Road Tolling (ORT) Off-System Signing, (Miami-Dade County, Florida)	22. YEAR COMPLETED	
	PROFESSIONAL SERVICES 2016	CONSTRUCTION (If applicable) 2016

23. PROJECT OWNER'S INFORMATION

a. PROJECT OWNER Miami-Dade Expressway Authority	b. POINT OF CONTACT NAME Orlando Sanchez	c. POINT OF CONTACT TELEPHONE NUMBER (305) 265-5490
---	---	--

24. BRIEF DESCRIPTION OF PROJECT AND RELEVANCE TO THIS CONTRACT *(Include scope, size, and cost)*

MDX 11209.060 SR 112 Open Road Tolling (ORT) Off-System Signing: This project requires the construction of advance ground mounted and overhead signing to provide sufficient warning, guidance, and information to users entering the converted SR 112 Open Road Tolling (ORT) facility. A component of the Project includes the replacement of DMS signs for 95 Express which are impacted by the required SR 112 ORT signing. Project Cost: \$3.7 Mil.

25. FIRMS FROM SECTION C INVOLVED WITH THIS PROJECT

a.	(1) FIRM NAME CIMA Engineering Corp	(2) FIRM LOCATION <i>(City and State)</i> Fort Lauderdale, Florida	(3) ROLE CEI
b.	(1) FIRM NAME	(2) FIRM LOCATION <i>(City and State)</i>	(3) ROLE
c.	(1) FIRM NAME	(2) FIRM LOCATION <i>(City and State)</i>	(3) ROLE
d.	(1) FIRM NAME	(2) FIRM LOCATION <i>(City and State)</i>	(3) ROLE
e.	(1) FIRM NAME	(2) FIRM LOCATION <i>(City and State)</i>	(3) ROLE
f.	(1) FIRM NAME	(2) FIRM LOCATION <i>(City and State)</i>	(3) ROLE

F. EXAMPLE PROJECTS WHICH BEST ILLUSTRATE PROPOSED TEAM'S QUALIFICATIONS FOR THIS CONTRACT <i>(Present as many projects as requested by the agency, or 10 projects, if not specified. Complete one Section F for each project.)</i>	20. EXAMPLE PROJECT KEY NUMBER 8
---	-------------------------------------

21. TITLE AND LOCATION <i>(City and State)</i> Turnpike All Electronic Tolling Project Phase 4B (Broward County, Florida)	22. YEAR COMPLETED	
	PROFESSIONAL SERVICES 2016	CONSTRUCTION (If applicable) 2016

23. PROJECT OWNER'S INFORMATION

a. PROJECT OWNER Florida Turnpike	b. POINT OF CONTACT NAME Jaime Gomez	c. POINT OF CONTACT TELEPHONE NUMBER (954) 934-1131
--------------------------------------	---	--

24. BRIEF DESCRIPTION OF PROJECT AND RELEVANCE TO THIS CONTRACT *(Include scope, size, and cost)*

Project Engineer. Scope of project includes milling and resurfacing Dolphin Center Ramps, modifying Hollywood Blvd interchange and install tri-chord gantry and new building, modifying Griffin Road Ramps and install cantilever gantry NB and truss span southbound, demo existing buildings & tunnel and install new building, resurface NB on ramp at County Line Road. Associated signalization, drainage, lighting, ITS, utilities, and building structures are included in project limits. Project cost: \$10.6 Mil.

25. FIRMS FROM SECTION C INVOLVED WITH THIS PROJECT

a.	(1) FIRM NAME CIMA Engineering Corp	(2) FIRM LOCATION <i>(City and State)</i> Fort Lauderdale, Florida	(3) ROLE CEI
b.	(1) FIRM NAME	(2) FIRM LOCATION <i>(City and State)</i>	(3) ROLE
c.	(1) FIRM NAME	(2) FIRM LOCATION <i>(City and State)</i>	(3) ROLE
d.	(1) FIRM NAME	(2) FIRM LOCATION <i>(City and State)</i>	(3) ROLE
e.	(1) FIRM NAME	(2) FIRM LOCATION <i>(City and State)</i>	(3) ROLE
f.	(1) FIRM NAME	(2) FIRM LOCATION <i>(City and State)</i>	(3) ROLE

F. EXAMPLE PROJECTS WHICH BEST ILLUSTRATE PROPOSED TEAM'S QUALIFICATIONS FOR THIS CONTRACT <i>(Present as many projects as requested by the agency, or 10 projects, if not specified. Complete one Section F for each project.)</i>		20. EXAMPLE PROJECT KEY NUMBER 9
21. TITLE AND LOCATION <i>(City and State)</i> Perimeter Road (Miami-Dade County, Florida)	22. YEAR COMPLETED	
	PROFESSIONAL SERVICES 2010	CONSTRUCTION (If applicable) 2010

23. PROJECT OWNER'S INFORMATION		
a. PROJECT OWNER FDOT	b. POINT OF CONTACT NAME Isa Nunez	c. POINT OF CONTACT TELEPHONE NUMBER (305) 499-2370

24. BRIEF DESCRIPTION OF PROJECT AND RELEVANCE TO THIS CONTRACT *(Include scope, size, and cost)*

CEI on the \$4.9 million Perimeter Road reconstruction project from NW 72nd Avenue to NW 57th Avenue. Project includes construction of a four-lane road south of the Miami International Airport. Included installation of a 120" culvert crossing the Venetian canal. Coordination with MIA, TSA, FAA, CSX and Contamination abatement.

25. FIRMS FROM SECTION C INVOLVED WITH THIS PROJECT			
a.	(1) FIRM NAME CIMA Engineering Corp	(2) FIRM LOCATION <i>(City and State)</i> Fort Lauderdale, Florida	(3) ROLE CEI
b.	(1) FIRM NAME	(2) FIRM LOCATION <i>(City and State)</i>	(3) ROLE
c.	(1) FIRM NAME	(2) FIRM LOCATION <i>(City and State)</i>	(3) ROLE
d.	(1) FIRM NAME	(2) FIRM LOCATION <i>(City and State)</i>	(3) ROLE
e.	(1) FIRM NAME	(2) FIRM LOCATION <i>(City and State)</i>	(3) ROLE
f.	(1) FIRM NAME	(2) FIRM LOCATION <i>(City and State)</i>	(3) ROLE

F. EXAMPLE PROJECTS WHICH BEST ILLUSTRATE PROPOSED TEAM'S QUALIFICATIONS FOR THIS CONTRACT <i>(Present as many projects as requested by the agency, or 10 projects, if not specified. Complete one Section F for each project.)</i>		20. EXAMPLE PROJECT KEY NUMBER 10		
21. TITLE AND LOCATION <i>(City and State)</i> SR-823/Red Road, SR-823/Flamingo Road (Broward County, Florida)		22. YEAR COMPLETED <table border="1" style="width: 100%; border-collapse: collapse;"> <tr> <td style="text-align: center;">PROFESSIONAL SERVICES 2008</td> <td style="text-align: center;">CONSTRUCTION (If applicable) 2008</td> </tr> </table>	PROFESSIONAL SERVICES 2008	CONSTRUCTION (If applicable) 2008
PROFESSIONAL SERVICES 2008	CONSTRUCTION (If applicable) 2008			
23. PROJECT OWNER'S INFORMATION				
a. PROJECT OWNER FDOT	b. POINT OF CONTACT NAME Rudi Batz	c. POINT OF CONTACT TELEPHONE NUMBER (954) 958-7642		
24. BRIEF DESCRIPTION OF PROJECT AND RELEVANCE TO THIS CONTRACT <i>(Include scope, size, and cost)</i>				

CEI for the \$4.2 million SR-823/Red Road (2.0 Miles) and \$2.5 million SR-823/Flamingo Road (1.3 Miles) reconstruction Project. Included the milling and resurfacing of the roadway with FC-5, guardrail, stripping, and signage improvements. FM No. 413837-1-52-01 and 413834-1-52-01

25. FIRMS FROM SECTION C INVOLVED WITH THIS PROJECT			
a.	(1) FIRM NAME CIMA Engineering Corp	(2) FIRM LOCATION <i>(City and State)</i> Fort Lauderdale, Florida	(3) ROLE CEI
b.	(1) FIRM NAME	(2) FIRM LOCATION <i>(City and State)</i>	(3) ROLE
c.	(1) FIRM NAME	(2) FIRM LOCATION <i>(City and State)</i>	(3) ROLE
d.	(1) FIRM NAME	(2) FIRM LOCATION <i>(City and State)</i>	(3) ROLE
e.	(1) FIRM NAME	(2) FIRM LOCATION <i>(City and State)</i>	(3) ROLE
f.	(1) FIRM NAME	(2) FIRM LOCATION <i>(City and State)</i>	(3) ROLE

G. KEY PERSONNEL PARTICIPATION IN EXAMPLE PROJECTS

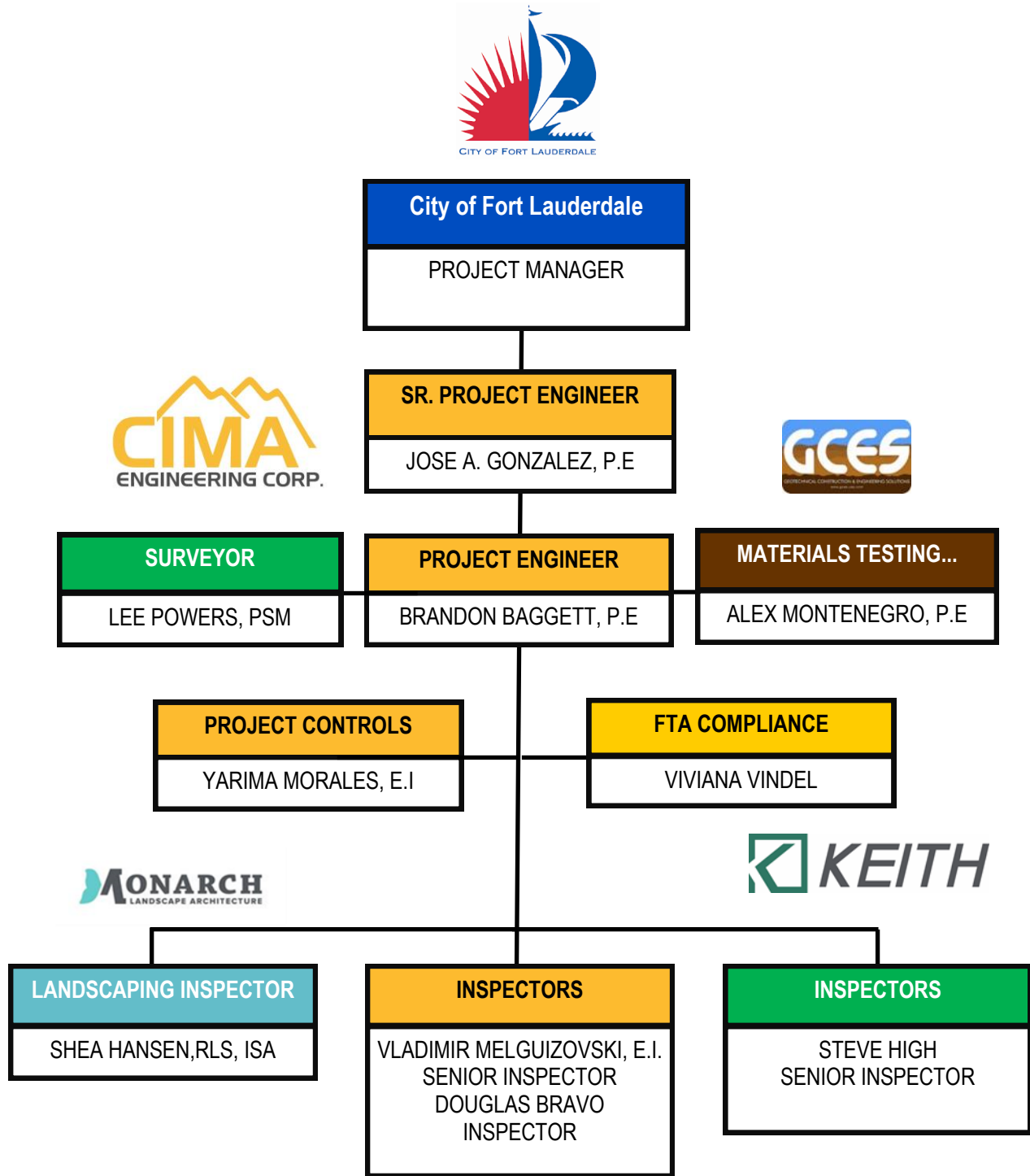
26. NAMES OF KEY PERSONNEL (From Section E, Block 12)	27. ROLE IN THIS CONTRACT (From Section E, Block 13)	28. EXAMPLE PROJECTS LISTED IN SECTION F (Fill in "Example Projects Key" section below before completing table. Place "X" under project key number for participation in same or similar role.)									
		1	2	3	4	5	6	7	8	9	10
Jose A. Gonzalez	Senior Project Engineer	<input checked="" type="checkbox"/>	<input type="checkbox"/>	<input checked="" type="checkbox"/>	<input checked="" type="checkbox"/>	<input checked="" type="checkbox"/>	<input checked="" type="checkbox"/>	<input checked="" type="checkbox"/>	<input type="checkbox"/>	<input checked="" type="checkbox"/>	<input checked="" type="checkbox"/>
Brandon Baggett	Quality Assurance/Project Engineer/Scheduling	<input type="checkbox"/>	<input type="checkbox"/>	<input type="checkbox"/>	<input type="checkbox"/>	<input type="checkbox"/>	<input type="checkbox"/>	<input type="checkbox"/>	<input checked="" type="checkbox"/>	<input type="checkbox"/>	<input type="checkbox"/>
Dwayne Benitez	Senior Inspector/QC Manager/Contract Support Specialist	<input checked="" type="checkbox"/>	<input type="checkbox"/>	<input checked="" type="checkbox"/>	<input type="checkbox"/>	<input checked="" type="checkbox"/>	<input checked="" type="checkbox"/>	<input checked="" type="checkbox"/>	<input type="checkbox"/>	<input checked="" type="checkbox"/>	<input checked="" type="checkbox"/>
Vladimir Melguizovski	Project Administrator/Senior Inspector	<input type="checkbox"/>	<input checked="" type="checkbox"/>	<input type="checkbox"/>	<input checked="" type="checkbox"/>	<input checked="" type="checkbox"/>	<input type="checkbox"/>	<input checked="" type="checkbox"/>	<input type="checkbox"/>	<input type="checkbox"/>	<input type="checkbox"/>
James Bard	Senior Roadway/Signal/ITS Inspector	<input type="checkbox"/>	<input type="checkbox"/>	<input type="checkbox"/>	<input type="checkbox"/>	<input checked="" type="checkbox"/>	<input type="checkbox"/>	<input type="checkbox"/>	<input checked="" type="checkbox"/>	<input type="checkbox"/>	<input type="checkbox"/>
Douglas Bravo	Roadway/Utilities Inspector	<input type="checkbox"/>	<input checked="" type="checkbox"/>	<input type="checkbox"/>	<input checked="" type="checkbox"/>	<input type="checkbox"/>	<input type="checkbox"/>	<input type="checkbox"/>	<input checked="" type="checkbox"/>	<input type="checkbox"/>	<input type="checkbox"/>
Viviana Vindel	Resident Compliance Specialist/Document Control	<input type="checkbox"/>	<input type="checkbox"/>	<input type="checkbox"/>	<input checked="" type="checkbox"/>	<input type="checkbox"/>	<input type="checkbox"/>	<input type="checkbox"/>	<input type="checkbox"/>	<input checked="" type="checkbox"/>	<input checked="" type="checkbox"/>
Yarima Morales	Assistant Project Engineer/Contract Support Specialist	<input checked="" type="checkbox"/>	<input type="checkbox"/>	<input type="checkbox"/>	<input type="checkbox"/>	<input checked="" type="checkbox"/>	<input type="checkbox"/>	<input type="checkbox"/>	<input type="checkbox"/>	<input type="checkbox"/>	<input type="checkbox"/>
		<input type="checkbox"/>	<input type="checkbox"/>	<input type="checkbox"/>	<input type="checkbox"/>	<input type="checkbox"/>	<input type="checkbox"/>	<input type="checkbox"/>	<input type="checkbox"/>	<input type="checkbox"/>	<input type="checkbox"/>
		<input type="checkbox"/>	<input type="checkbox"/>	<input type="checkbox"/>	<input type="checkbox"/>	<input type="checkbox"/>	<input type="checkbox"/>	<input type="checkbox"/>	<input type="checkbox"/>	<input type="checkbox"/>	<input type="checkbox"/>
		<input type="checkbox"/>	<input type="checkbox"/>	<input type="checkbox"/>	<input type="checkbox"/>	<input type="checkbox"/>	<input type="checkbox"/>	<input type="checkbox"/>	<input type="checkbox"/>	<input type="checkbox"/>	<input type="checkbox"/>
		<input type="checkbox"/>	<input type="checkbox"/>	<input type="checkbox"/>	<input type="checkbox"/>	<input type="checkbox"/>	<input type="checkbox"/>	<input type="checkbox"/>	<input type="checkbox"/>	<input type="checkbox"/>	<input type="checkbox"/>
		<input type="checkbox"/>	<input type="checkbox"/>	<input type="checkbox"/>	<input type="checkbox"/>	<input type="checkbox"/>	<input type="checkbox"/>	<input type="checkbox"/>	<input type="checkbox"/>	<input type="checkbox"/>	<input type="checkbox"/>
		<input type="checkbox"/>	<input type="checkbox"/>	<input type="checkbox"/>	<input type="checkbox"/>	<input type="checkbox"/>	<input type="checkbox"/>	<input type="checkbox"/>	<input type="checkbox"/>	<input type="checkbox"/>	<input type="checkbox"/>
		<input type="checkbox"/>	<input type="checkbox"/>	<input type="checkbox"/>	<input type="checkbox"/>	<input type="checkbox"/>	<input type="checkbox"/>	<input type="checkbox"/>	<input type="checkbox"/>	<input type="checkbox"/>	<input type="checkbox"/>
		<input type="checkbox"/>	<input type="checkbox"/>	<input type="checkbox"/>	<input type="checkbox"/>	<input type="checkbox"/>	<input type="checkbox"/>	<input type="checkbox"/>	<input type="checkbox"/>	<input type="checkbox"/>	<input type="checkbox"/>
		<input type="checkbox"/>	<input type="checkbox"/>	<input type="checkbox"/>	<input type="checkbox"/>	<input type="checkbox"/>	<input type="checkbox"/>	<input type="checkbox"/>	<input type="checkbox"/>	<input type="checkbox"/>	<input type="checkbox"/>
		<input type="checkbox"/>	<input type="checkbox"/>	<input type="checkbox"/>	<input type="checkbox"/>	<input type="checkbox"/>	<input type="checkbox"/>	<input type="checkbox"/>	<input type="checkbox"/>	<input type="checkbox"/>	<input type="checkbox"/>
		<input type="checkbox"/>	<input type="checkbox"/>	<input type="checkbox"/>	<input type="checkbox"/>	<input type="checkbox"/>	<input type="checkbox"/>	<input type="checkbox"/>	<input type="checkbox"/>	<input type="checkbox"/>	<input type="checkbox"/>
		<input type="checkbox"/>	<input type="checkbox"/>	<input type="checkbox"/>	<input type="checkbox"/>	<input type="checkbox"/>	<input type="checkbox"/>	<input type="checkbox"/>	<input type="checkbox"/>	<input type="checkbox"/>	<input type="checkbox"/>
		<input type="checkbox"/>	<input type="checkbox"/>	<input type="checkbox"/>	<input type="checkbox"/>	<input type="checkbox"/>	<input type="checkbox"/>	<input type="checkbox"/>	<input type="checkbox"/>	<input type="checkbox"/>	<input type="checkbox"/>
		<input type="checkbox"/>	<input type="checkbox"/>	<input type="checkbox"/>	<input type="checkbox"/>	<input type="checkbox"/>	<input type="checkbox"/>	<input type="checkbox"/>	<input type="checkbox"/>	<input type="checkbox"/>	<input type="checkbox"/>
		<input type="checkbox"/>	<input type="checkbox"/>	<input type="checkbox"/>	<input type="checkbox"/>	<input type="checkbox"/>	<input type="checkbox"/>	<input type="checkbox"/>	<input type="checkbox"/>	<input type="checkbox"/>	<input type="checkbox"/>
		<input type="checkbox"/>	<input type="checkbox"/>	<input type="checkbox"/>	<input type="checkbox"/>	<input type="checkbox"/>	<input type="checkbox"/>	<input type="checkbox"/>	<input type="checkbox"/>	<input type="checkbox"/>	<input type="checkbox"/>
		<input type="checkbox"/>	<input type="checkbox"/>	<input type="checkbox"/>	<input type="checkbox"/>	<input type="checkbox"/>	<input type="checkbox"/>	<input type="checkbox"/>	<input type="checkbox"/>	<input type="checkbox"/>	<input type="checkbox"/>

29. EXAMPLE PROJECTS KEY

NUMBER	TITLE OF EXAMPLE PROJECT (From Section F)	NUMBER	TITLE OF EXAMPLE PROJECT (From Section F)
1	MDX's Design-Build of the Dolphin Station Park and Ride Transit Terminal Facility	6	MDX 836-12 Design Build Project (Turnpike Flyover) Westbound SR-836 to Florida Turnpike
2	Miami Dade County Water and Sewer Capital Improvement Program	7	MDX 11209.060 SR 112 Open Road Tolling (ORT) Off-System Signing
3	City of Fort Lauderdale, Fire Department Bond Program	8	Turnpike All Electronic Tolling Project Phase 4B
4	Seminole Tribe of Florida, Snake Road Bridge Replacement and Roadway Re-construction	9	Perimeter Road
5	FDOT's D-4 I-95 Express Lane Phase II	10	SR-823/Red Road, SR-823/Flamingo Road

H. ADDITIONAL INFORMATION

30. PROVIDE ANY ADDITIONAL INFORMATION REQUESTED BY THE AGENCY. ATTACH ADDITIONAL SHEETS AS NEEDED.



I. AUTHORIZED REPRESENTATIVE

The foregoing is a statement of facts.

31. SIGNATURE

32. DATE

04/30/2018

33. NAME AND TITLE

Jose A. Gonzalez, President

1. SOLICITATION NUMBER (If any) RFQ # 12135-986

(If a firm has branch offices, complete for each specific branch office seeking work.)

8a. FORMER FIRM NAME(S) <i>(If any)</i>	8b. YEAR ESTABLISHED	8c. UNIQUE ENTITY IDENTIFIER
n/a	18	031642262

11. ANNUAL AVERAGE PROFESSIONAL SERVICES REVENUES OF FIRM FOR LAST 3 YEARS <i>(Insert revenue index number shown at right)</i>				PROFESSIONAL SERVICES REVENUE INDEX NUMBER	
a. Federal Work		4		1. Less than \$100,000.	6. \$2 million to less than \$5 million
b. Non-Federal Work		4		2. \$100,000 to less than \$250,000	7. \$5 million to less than \$10 million
c. Total Work		6		3. \$250,000 to less than \$500,000	8. \$10 million to less than \$25 million
				4. \$500,000 to less than \$1 million	9. \$25 million to less than \$50 million
				5. \$1 million to less than \$2 million	10. \$50 million or greater

The foregoing is a statement of facts.

CAM #18-1170
Exhibit 8
41 of 58

E. RESUMES OF KEY PERSONNEL PROPOSED FOR THIS CONTRACT

(Complete one Section E for each key person.)

12. NAME Steve High	13. ROLE IN THIS CONTRACT Senior Construction Inspector	14. YEARS EXPERIENCE	
		a. TOTAL 46	b. WITH CURRENT FIRM 10
15. FIRM NAME AND LOCATION (City and State) Keith and Associates, Inc., Pompano Beach			
16. EDUCATION (DEGREE AND SPECIALIZATION) Broward College & Palm Beach College - Business Management, Engineering & Survey		17. CURRENT PROFESSIONAL REGISTRATION (STATE AND DISCIPLINE) FDEP Stormwater Management Inspector License #5696	
18. OTHER PROFESSIONAL QUALIFICATIONS (Publications, Organizations, Training, Awards, etc.) Asphalt Paving Technician Level 1 (FDOT), Earthwork Construction Inspection, Level 1 (FDOT), Concrete Field Technician, Level 1 (FDOT), ACI Concrete Field Testing Technician, Grade I, Troxler Nuclear Gauge, Final Estimates Level 1 (FDOT), FDOT Workzone Traffic Control Intermediate Level MOT, Drilled Shaft Inspection (FDOT), Auger Cast Pile Inspector's Course, IMSA Traffic Signals Level 1, 10 Hour OSHA General Industry safety and health hazard recognition and prevention			

19. RELEVANT PROJECTS

	(1) TITLE AND LOCATION (City and State)	(2) YEAR COMPLETED	
		PROFESSIONAL SERVICES	CONSTRUCTION (If applicable)
a.	Pompano Beach Downtown Connectivity Plan, Phase 1 & 2 (Pompano Beach, Florida)	2016	2016
	(3) BRIEF DESCRIPTION (Brief scope, size, cost, etc.) AND SPECIFIC ROLE <input checked="" type="checkbox"/> Check if project performed with current firm (Ph. 1) KEITH is responsible for performing an area wide study of the Northwest CRA existing infrastructure to create an underground utilities atlas map as well as to analyze the existing roadway infrastructure for suitability, connectivity and circulation. KEITH prepared an assessment of the existing facilities and provided recommendations on suitability of the CRA's proposed land use. (Ph. 2) Based on the approved Connectivity Plan as provided by the Pompano Beach CRA, the proposed improvements are to include pedestrian friendly streetscape with landscape/hardscape beautification features along MLK Blvd and in the Old Pompano Downtown; including special pavement materials, pedestrian lighting and roadway, streetscape furnishings, utility adjustments and drainage and roadway improvements. Mr. High provided engineering inspection and project management in liaison with owner, contractor and City.		
b.	State Road A1A, S-Curve Phase I and Phase II (Deerfield Beach, Florida)	2009	2009
	(3) BRIEF DESCRIPTION (Brief scope, size, cost, etc.) AND SPECIFIC ROLE <input checked="" type="checkbox"/> Check if project performed with current firm Mr. High provided engineering construction administration, inspections and certifications for a portion of State Road A1A, between Hillsboro Boulevard and NE 20th Terrace. Special consideration was given to drainage and utility relocations, and inclusion of paver walkways and decorative street lighting. Safety and MOT were of particular concern in this high pedestrian traffic corridor.		
c.	Broward County Public Works Traffic Signalization Improvement Program (Broward County, Florida)	N/A	On-going
	(3) BRIEF DESCRIPTION (Brief scope, size, cost, etc.) AND SPECIFIC ROLE <input checked="" type="checkbox"/> Check if project performed with current firm This project included construction management services for the mast arm conversion and intersection improvement projects within the County's Traffic Signalization System. Mr. High, as one of the Resident Project Representatives, provided construction inspection services to the Metric Engineering CEI Team as a subconsultant team member. His responsibilities included drilled shaft monitoring for mast arm installations as well as witnessing and verification of earthwork compaction and asphalt placement, Maintenance of Traffic (MOT), compliance with specifications & coordination with contractor personnel.		
d.	Sidewalk Extension N.E. 27th Avenue (Lighthouse Point, Florida)	2017	2017
	(3) BRIEF DESCRIPTION (Brief scope, size, cost, etc.) AND SPECIFIC ROLE <input checked="" type="checkbox"/> Check if project performed with current firm KEITH provided professional services for the design, permitting and CEI services for the installation of 5 foot wide sidewalk along the West side of N.E. 27th Avenue from N.E. 51st Street to just South of the Northern municipal limits of Lighthouse Point. The sidewalk is approximately 1,500 feet. Mr. High served as the construction engineering inspector responsible for the project.		
e.	Lyons Road Median Improvements (Coconut Creek, Florida)	2012	2012
	(3) BRIEF DESCRIPTION (Brief scope, size, cost, etc.) AND SPECIFIC ROLE <input checked="" type="checkbox"/> Check if project performed with current firm KEITH served as the construction engineering inspection and contract manager to the City of Coconut Creek Department for General Engineering Services Contract for this FDOT funded Local Agency Program (LAP) roadway improvement project. KEITH served in the capacity of CEI Project Manager on behalf of the City to manage enhancements of a roadway median project along Lyons Road between Copans Road and Coconut Creek Parkway. The project included coordination with the City, the design engineer, FDOT and the site contractor. KEITH was directly responsible for all FDOT, LAP, EEO and Davis-Bacon Wage Rate Compliance monitoring and interviews.		

E. RESUMES OF KEY PERSONNEL PROPOSED FOR THIS CONTRACT

(Complete one Section E for each key person.)

12. NAME Lee Powers, PSM	13. ROLE IN THIS CONTRACT Project Surveyor	14. YEARS EXPERIENCE	
		a. TOTAL 13	b. WITH CURRENT FIRM 9
15. FIRM NAME AND LOCATION (City and State) Keith and Associates, Inc., Pompano Beach, Florida			
16. EDUCATION (DEGREE AND SPECIALIZATION) BS Land Surveying & Geomatics Engineering, Purdue University, 2005		17. CURRENT PROFESSIONAL REGISTRATION (STATE AND DISCIPLINE) Florida Professional Surveyor & Mapper, #6805, 2010	
18. OTHER PROFESSIONAL QUALIFICATIONS (Publications, Organizations, Training, Awards, etc.) Florida Society of Professional Surveyors & Mappers, BIM Smart Foundation, Member, BuildingSMART Foundation Member. Certifications: Transportation Worker Identification Credential (TWIC), FDOT Maintenance of Traffic			

19. RELEVANT PROJECTS

	(1) TITLE AND LOCATION (City and State)	(2) YEAR COMPLETED	
		PROFESSIONAL SERVICES	CONSTRUCTION (If applicable)
a.	The Wave Modern Streetcar, Fort Lauderdale, Florida (Fort Lauderdale, Florida)	On-going	N/A
	(3) BRIEF DESCRIPTION (Brief scope, size, cost, etc.) AND SPECIFIC ROLE Keith and Associates was tasked with providing Surveying and Subsurface Utility Engineering (SUE) services for this modern streetcar in Downtown Fort Lauderdale between Northwest 6th Street and Southeast 17th Street. The system would operate 5 modern streetcars through 2.7 miles in mixed traffic along existing roadways and would utilize transit signal priority. Surveying services include project control, aerial targets, topography/DTM, aerial clearances, drainage and sanitary details, recovery of property and right-of-way monumentation, boundary surveys, and survey support for the geotechnical operations.		
b.	Federal Highway (US-1) Beautification Project (Delray Beach, Florida)	2017	2017
	(3) BRIEF DESCRIPTION (Brief scope, size, cost, etc.) AND SPECIFIC ROLE Mr. Powers served as the Project Surveyor for this project that includes US-1 (Federal Highway) in Delray Beach from just South of S.E. 10th Street to just North of N.E. 8th Street. This project provides the design services necessary to decrease the current three-lane configuration of US-1 (Federal Highway) through the downtown area to a two-lane roadway with additional parking, walkways and landscaping. This project required K&A to establish new control points throughout the project limits. K&A also conducted a survey of over 220 drainage structures throughout the corridor. Finished floor elevations were measured on all structures within 25 feet of the right-of-way. A Topographic Survey was required for the engineering designs. This Topographic Survey collected all surface data within the right-of-way of US-1.		
c.	Martin Luther King Jr. Boulevard Improvements (Pompano Beach, Florida)	2013	2013
	(3) BRIEF DESCRIPTION (Brief scope, size, cost, etc.) AND SPECIFIC ROLE Mr. Powers served as the project Surveyor on this Route Survey for the Pompano Beach CRA. This survey included recovering all existing property corners & right-of-way monumentation, locating all trees and utilities, and a detailed Topographic Survey to accompany the boundary and right-of-way determinations. This project also included a title review of every parcel within and bordering the project limits.		
d.	Pompano Beach Downtown Connectivity Plan, Phase 1 & 2 (Pompano Beach, Florida)	2016	2016
	(3) BRIEF DESCRIPTION (Brief scope, size, cost, etc.) AND SPECIFIC ROLE Keith and Associates was responsible for performing an area wide study of the Northwest CRA existing infrastructure to create an underground utilities atlas map as well as to analyze the existing roadway infrastructure for suitability, connectivity and circulation. KA prepared an assessment of the existing facilities and provided recommendations on suitability of the CRA's proposed land use. Based on the approved Connectivity Plan, the proposed improvements included pedestrian friendly streetscape with landscape/hardscape beautification features along MLK Blvd and in the Old Pompano Downtown; including special pavement materials, pedestrian lighting and roadway, streetscape furnishings, utility adjustments and drainage and roadway improvements.		
e.	Design/Build Pier Parking Garage (Pompano Beach, Florida)	2016	2016
	(3) BRIEF DESCRIPTION (Brief scope, size, cost, etc.) AND SPECIFIC ROLE The new parking garage includes five stories, 625 parking spaces, a speed ramp to facilitate access to higher levels of the garage and retail space on the ground level fronting NE 3rd Street and the new Pier Street. As part of the design/build team, Keith and Associates is responsible for Planning, Surveying, Utility Coordination/Investigation, Civil Engineering, Landscape and Irrigation Design, Permitting and Construction Inspection of the project.		

E. RESUMES OF KEY PERSONNEL PROPOSED FOR THIS CONTRACT

(Complete one Section E for each key person.)

12. NAME ALEJANDRO R. MONTENEGRO	13. ROLE IN THIS CONTRACT SENIOR GEOTECHNICAL ENGINEER	14. YEARS EXPERIENCE a. TOTAL 29 b. WITH CURRENT FIRM 4.0	
15. FIRM NAME AND LOCATION (City and State) GCES ENGINEERING SERVICES, LLC 10860 NW 138th Street, Hialeah Gardens, FL 33018			
16. EDUCATION (DEGREE AND SPECIALIZATION) Master in Engineering (Geotechnical) University of Detroit, Michigan-1991 BS in Civil Engineering, University of Detroit, Michigan -1986		17. CURRENT PROFESSIONAL REGISTRATION (STATE AND DISCIPLINE) State of Florida, #59426 Professional Engineer, Civil Engineer.	
18. OTHER PROFESSIONAL QUALIFICATIONS (Publications, Organizations, Training, Awards, etc.) FES- Florida Engineering Society-Miami Chapter Past President. Awarded Engineer of the year 2010-2011 by the Florida Engineering Society.			

19. RELEVANT PROJECTS

(1) TITLE AND LOCATION (City and State) Roadway Improvement of SR 934/NW 74St from SR 826 / Palmetto Expressway to SR 251 Okeechobee Road in Miami-Dade County, Florida	(2) YEAR COMPLETED PROFESSIONAL SERVICES 2017 CONSTRUCTION (If applicable)	
a. (3) BRIEF DESCRIPTION (Brief scope, size, cost, etc.) AND SPECIFIC ROLE <input checked="" type="checkbox"/> Check if project performed with current firm Prepared a geotechnical report describing methods, procedures, field/laboratory test results, analyses and evaluations for the proposed roadway improvements. The subsurface exploration also included the evaluation of subsurface conditions and stratus of the underlying layers for mast arms and pier protection barrier walls. Presented in our report were a summary of the geotechnical soil/rock parameters at each boring location for use in the foundation design.		
(1) TITLE AND LOCATION (City and State) E6K52 – ITS Device Replacements – Segment 3 SR 395, SR 932, and SR 826 Miami-Dade County, Florida.	(2) YEAR COMPLETED PROFESSIONAL SERVICES 2017 CONSTRUCTION (If applicable)	
b. (3) BRIEF DESCRIPTION (Brief scope, size, cost, etc.) AND SPECIFIC ROLE <input checked="" type="checkbox"/> Check if project performed with current firm Geotechnical Engineer responsible for the subsurface exploration for the proposed Dynamic Message Sign (DMS) structures located along SR 395, SR 932 and SR 826. The purpose of this subsurface exploration was to evaluate the subsurface conditions (i.e. subsoil, rock, and groundwater conditions) at the proposed structure locations described herein. Specifically, exploratory borings were drilled at the DMS locations to analyze the subsurface conditions.		
(1) TITLE AND LOCATION (City and State) I-595 Corridor Improvements. Broward County, FL	(2) YEAR COMPLETED PROFESSIONAL SERVICES 2013 CONSTRUCTION (If applicable)	
c. (3) BRIEF DESCRIPTION (Brief scope, size, cost, etc.) AND SPECIFIC ROLE <input type="checkbox"/> Check if project performed with current firm Managed by FDOT (District 4) qualified staff to perform quality control and materials testing services on the I-595 expansion project. Mr. Alejandro Montenegro managed approximately 8 field representatives performing a variety of services, from asphalt to concrete inspections. Mr. Montenegro was in daily communication with the field representatives as well as the client to ensure that the job is performed to the client's satisfaction.		
(1) TITLE AND LOCATION (City and State) 836 Eastbound Auxiliary Lane Addition from West of NW 57th Ave. to NW 42nd Ave., Miami-Dade County, FL, Miami-Dade Expressway Authority	(2) YEAR COMPLETED PROFESSIONAL SERVICES 2012 CONSTRUCTION (If applicable)	
d. (3) BRIEF DESCRIPTION (Brief scope, size, cost, etc.) AND SPECIFIC ROLE <input type="checkbox"/> Check if project performed with current firm Geotechnical Engineer for the CEI firm of the project. Scope of work included reviewing foundation certification packages for Drilled Shaft and Prestressed concrete piles, review PDA and CLS testing performed by the contractor and performed verification testing of soil and concrete.		
(1) TITLE AND LOCATION (City and State) Miami Dade County Soil Exploration, Material Testing and Foundations Contract- Miami-Dade County, FL	(2) YEAR COMPLETED PROFESSIONAL SERVICES 2014 CONSTRUCTION (If applicable)	
e. (3) BRIEF DESCRIPTION (Brief scope, size, cost, etc.) AND SPECIFIC ROLE <input checked="" type="checkbox"/> Check if project performed with current firm Responsible for managing Miami-Dade County Soil Exploration, Material Testing and Foundations Contract including project management, technical review and quality assurance for a wide variety of geotechnical and construction material testing projects. Prepared geotechnical reports for roadway improvements, sewage pumping stations, force main pipes and buildings supported on conventional shallow footing or on augercast pile foundations.		

F. EXAMPLE PROJECTS WHICH BEST ILLUSTRATES PROPOSED TEAMS'S QUALIFICATIONS FOR THIS CONTRACT (PRESENT AS MANY PROJECTS AS REQUESTED BY THE AGENCY, OR 10 PROJECTS, IF NOT SPECIFIED. COMPLETE ONE SECTION F FOR EACH PROJECT)	20. EXAMPLE PROJECT KEY NUMBER <div style="text-align: center; font-size: 24pt;">3</div>
--	---

21. TITLE AND LOCATION (City And State) Miami-Dade County-Wide Soils, Foundation and Geotechnical Testing Services, Miami-Dade, Florida	22. YEAR COMPLETED	
	PROFESSIONAL SERVICES <div style="text-align: center;">On-going</div>	CONSTRUCTION (If Applicable)

23. PROJECT OWNER'S INFORMATION

a. PROJECT OWNER Miami-Dade County – Internal Services Department	b. POINT OF CONTACT Elena Romero PW-Professional Contracts Specialist Public Works and Waste Management	c. POINT OF CONTACT TELEPHONE NUMBER (305) 375-1123
---	---	---

24. BRIEF DESCRIPTION OR PROJECT AND RELEVANCE TO THIS CONTRACT (include scope, size, and cost)

This Project Example demonstrates the full range of services provided by GCES Engineering Services, LLC (GCES) to Miami-Dade County, which encompass those required under the continuing contract on an as-needed basis. Since 2012 GCES Engineering Services, LLC has provided geotechnical engineering and exploration, construction material testing, and inspection services to support various government agencies.

Under the continuing contract, the services provided included:

- Test Borings/Exfiltration/Drilling Services
- Geotechnical Engineering Evaluation
- Quality Control Testing of Soils, Concrete, Asphalt, Structural Steel
- Geotechnical Inspections



GCES field technician performing nuclear density test on roadway project in Miami-Dade County

Example of these projects include:

- Roadway Improvements along SW 157 Avenue – Miami-Dade County
- New Switchgear Building Phase I at Alexander Orr MDW&S Water Treatment Plant – Miami-Dade County
- NW 22 Avenue and NW 189 Terrace - Miami-Dade County
- Various Roads and Intersections in the NW and SW areas - Miami-Dade County
- Furnish and Install 8-Inch D.I. FM along SW 216 Street from SW 98 Court to SW 99 Ave. Miami-Dade County
- Reconstruction of Duval Avenue from West Indigo Street to Hibiscus Street - Miami-Dade County



GCES Personnel performing geotechnical drilling at one of Miami-Dade Water & Sewer sites

Each authorization work order is individually assigned, agreed and approved. The maximum fees for the current contract are \$900,000 for a 2 year period

	(1) FIRM NAME	(2) FIRM LOCATION (City and State)	(3) Role
a.	GCES Engineering Services	Hialeah Gardens, Florida	Geotechnical Engineering and Materials Testing
b.	(1) FIRM NAME	(2) FIRM LOCATION (City and State)	(3) Role
c.	(1) FIRM NAME	(2) FIRM LOCATION (City and State)	(3) Role

(PRESENT AS MANY PROJECTS AS REQUESTED BY THE AGENCY, OR 10 PROJECTS, IF NOT SPECIFIED.
COMPLETE ONE SECTION F FOR EACH PROJECT)

5

Roadway Improvements along SW 157 Avenue from SW 184 St. to SW 152 St.

2016

\$1.5 million

Miami Dade County PWWM

Mrs. Nestor Melian

(786)-375-0004

GCES Engineering Services, LLC (GCES) quality control is a critical responsibility for all GCES employees. Our quality program assigns the immediate responsibility of construction quality control to the project manager with oversight from senior management.

GCES's laboratory facility has state-of-the-art equipment for testing soils, concrete, masonry, asphalt and aggregates. Our office follows strict quality assurance guidelines for equipment usage and calibration.

GCES performed quality control testing and inspection services for complete roadway reconstruction along a 2-mile stretch of SW 157th Avenue. The QC activities for the SW 157th Avenue roadway improvement included

- In-place densities for:
 - drainage structures
 - utility conduits
 - embankment
 - subgrade, and base for pavements
 - sidewalks
- Laboratory testing included:
 - sieve analysis
 - moisture-density testing (Proctor)
 - California bearing ratio (CBR)
 - organic contents
 - Concrete Compressive Strength
- Concrete Testing for:
 - Sidewalks
 - Curbs
 - Driveways



~~CAM #18-1170~~
STANDARD FORM 330 PAGE 2
Exhibit 8
46 of 58

E. RESUMES OF KEY PERSONNEL PROPOSED FOR THIS CONTRACT

(Complete one Section E for each key person.)

12. NAME	13. ROLE IN THIS CONTRACT	14. YEARS EXPERIENCE	
Shea Hansen, RLA, ISA	Landscape Architect/Certified Arborist/Landscape Inspector	a. TOTAL 11	b. WITH CURRENT FIRM 1.5
15. FIRM NAME AND LOCATION (City and State) Monarch Landscape Architecture, LLC			
16. EDUCATION (Degree and Specialization) Master of Landscape Architecture; ISA Certified Arborist		17. CURRENT PROFESSIONAL REGISTRATION (State and Discipline) Registered Landscape Architect	
18. OTHER PROFESSIONAL QUALIFICATIONS (Publications, Organizations, Training, Awards, etc.) Landscape Inspectors Association of Florida (LIAF)			

19. RELEVANT PROJECTS

(1) TITLE AND LOCATION (City and State)	(2) YEAR COMPLETED	
Old Dixie Highway, Fort Lauderdale, FL - Complete Street	PROFESSIONAL SERVICES 2014 to 2016	CONSTRUCTION (If applicable) 2018
a. (3) BRIEF DESCRIPTION (Brief scope, size, cost, etc.) AND SPECIFIC ROLE Landscape Architect/Arborist - Services provided include the preparation of construction documents for the landscape and irrigation design of the proposed bio swale areas and the roundabout, the design of two community monument entry signs, specifications, construction detailing, cost estimating, tree inventory, QA/QC, coordination with the City of Fort Lauderdale and FDOT's in-house roadway design, and field inspections. Construction Costs: \$137K		
<input type="checkbox"/> Check if project performed with current firm		
(1) TITLE AND LOCATION (City and State)	(2) YEAR COMPLETED	
SR-968 Flagler Street, Miami, FL - Complete Street	PROFESSIONAL SERVICES 2010-2016	CONSTRUCTION (If applicable) 2016
b. (3) BRIEF DESCRIPTION (Brief scope, size, cost, etc.) AND SPECIFIC ROLE Landscape Architect and Construction Observation - Services provided include the preparation of construction documents for the landscape design, specifications, construction detailing, cost estimating, tree inventory, QA/QC, construction observation, utility coordination and warranty reporting. Construction Costs: \$234K		
<input type="checkbox"/> Check if project performed with current firm		
(1) TITLE AND LOCATION (City and State)	(2) YEAR COMPLETED	
SR-A1A/Collins Avenue, Miami, FL - Complete Street	PROFESSIONAL SERVICES 2011 to 2015	CONSTRUCTION (If applicable) 2014-2015
c. (3) BRIEF DESCRIPTION (Brief scope, size, cost, etc.) AND SPECIFIC ROLE Landscape Architect and Construction Observation - Services provided include the preparation of hardscape, landscape and irrigation construction documents, cost estimation, specifications, construction detailing, warranty reporting, QA/QC and facilitating coordination between the FDOT and the City of Miami Beach. Construction Costs: \$250K		
<input type="checkbox"/> Check if project performed with current firm		
(1) TITLE AND LOCATION (City and State)	(2) YEAR COMPLETED	
SR-826/Palmetto Expy Reconstruction Design Build (Sect. 2 & 5), Miami, FL	PROFESSIONAL SERVICES 2013-2015	CONSTRUCTION (If applicable) 2013-2015
d. (3) BRIEF DESCRIPTION (Brief scope, size, cost, etc.) AND SPECIFIC ROLE Plan Reviewer, Construction Observation & Arborist. The reconstruction of both sections of SR-826 required phased constructability plan reviews, specification review, cost estimate review, landscape installation oversight, tree relocation oversight, inspection reporting and public involvement coordination. 700 existing tree inventory, 11K shrubs and 1K trees installed - Construction costs: \$215K.		
<input type="checkbox"/> Check if project performed with current firm		
(1) TITLE AND LOCATION (City and State)	(2) YEAR COMPLETED	
SR-5/Biscayne Boulevard, Miami, FL - Complete Street	PROFESSIONAL SERVICES 2006 to 2008	CONSTRUCTION (If applicable) 2007-2008
e. (3) BRIEF DESCRIPTION (Brief scope, size, cost, etc.) AND SPECIFIC ROLE Designer and Construction Observation - Services provided include the preparation of hardscape, landscape and irrigation construction documents, tree inventory of over 600 trees, cost estimation specifications, construction detailing, QA/QC, presentation renderings, warranty reporting, facilitating coordination between the FDOT and the City of Miami and public involvement meetings. Construction Costs: \$250K		
<input type="checkbox"/> Check if project performed with current firm		

F. EXAMPLE PROJECTS WHICH BEST ILLUSTRATE PROPOSED TEAM'S QUALIFICATIONS FOR THIS CONTRACT <i>(Present as many projects as requested by the agency, or 10 projects, if not specified. Complete one Section F for each project.)</i>		20. EXAMPLE PROJECT KEY NUMBER 1
21. TITLE AND LOCATION <i>(City and State)</i> Old Dixie Highway, Fort Lauderdale, FL - Complete Street	22. YEAR COMPLETED PROFESSIONAL SERVICES 2014 to 2016 CONSTRUCTION <i>(If applicable)</i> 2018	

23. PROJECT OWNER'S INFORMATION

a. PROJECT OWNER Florida Department of Transportation - D4	b. POINT OF CONTACT NAME Brent Lee-Shue-Ling, P.E.	c. POINT OF CONTACT TELEPHONE NUMBER (954) 777-4075
--	--	---

24. BRIEF DESCRIPTION OF PROJECT AND RELEVANCE TO THIS CONTRACT *(Include scope, size, and cost)*

This project reduced the width of the travel lanes in order to accommodate bicycle lanes along both sides of Old Dixie Highway; creating a continuous 5ft wide sidewalk on each side of the corridor; adding raised table intersections with crosswalks for increased pedestrian safety; adding a mini roundabout; pedestrian lighting; and improving drainage along the corridor by adding bio-swales. Services provided include the landscape design of the proposed bio-swale areas and the roundabout, enhancing and complementing the existing mature trees along the corridor, and the design of two community monument entry signs. Ms. Hansen's role included design, tree inventory, QA/QC, coordination with the City of Fort Lauderdale and FDOT's in-house roadway design, and field inspections. Construction Costs: \$137K



25. FIRMS FROM SECTION C INVOLVED WITH THIS PROJECT

a. (1) FIRM NAME Monarch Landscape Architecture - *work performed under Keith & Schnars.	(2) FIRM LOCATION <i>(City and State)</i> Fort Lauderdale, FL	(3) ROLE Landscape Architect/Arborist
b. (1) FIRM NAME	(2) FIRM LOCATION <i>(City and State)</i>	(3) ROLE
c. (1) FIRM NAME	(2) FIRM LOCATION <i>(City and State)</i>	(3) ROLE
d. (1) FIRM NAME	(2) FIRM LOCATION <i>(City and State)</i>	(3) ROLE
e. (1) FIRM NAME	(2) FIRM LOCATION <i>(City and State)</i>	(3) ROLE
f. (1) FIRM NAME	(2) FIRM LOCATION <i>(City and State)</i>	(3) ROLE

F. EXAMPLE PROJECTS WHICH BEST ILLUSTRATE PROPOSED TEAM'S QUALIFICATIONS FOR THIS CONTRACT <i>(Present as many projects as requested by the agency, or 10 projects, if not specified. Complete one Section F for each project.)</i>		20. EXAMPLE PROJECT KEY NUMBER 2
21. TITLE AND LOCATION <i>(City and State)</i> SR-968 Flagler Street, Miami, FL - Complete Street	22. YEAR COMPLETED	
	PROFESSIONAL SERVICES 2010-2016	CONSTRUCTION <i>(If applicable)</i> 2016

23. PROJECT OWNER'S INFORMATION

a. PROJECT OWNER Florida Department of Transportation - D6	b. POINT OF CONTACT NAME Kevin Schot, RLA	c. POINT OF CONTACT TELEPHONE NUMBER 305.470.5400
--	---	---

24. BRIEF DESCRIPTION OF PROJECT AND RELEVANCE TO THIS CONTRACT *(Include scope, size, and cost)*

Designed to improve vehicular and pedestrian safety, this 4.5 mile project from SW 72nd Avenue to SW 27th Avenue, created landscaped medians and signalized pedestrian crosswalks. As project manager, Ms. Hansen performed a thorough sight analysis, identifying all of the potential landscape opportunities within a largely limited corridor due to the maximized vehicular space of the right-of-way and existing utilities. The landscape design provided the installation of palm trees within the medians, creating green space and visual break-up of the once predominantly asphalt and concrete corridor, helping to reduce speeds and improve aesthetics. Construction Costs: \$234K



25. FIRMS FROM SECTION C INVOLVED WITH THIS PROJECT

a. (1) FIRM NAME Monarch Landscape Architecture - *work performed under Keith & Schnars.	(2) FIRM LOCATION <i>(City and State)</i> Fort Lauderdale, FL	(3) ROLE Landscape Architect and Construction Observation
b. (1) FIRM NAME	(2) FIRM LOCATION <i>(City and State)</i>	(3) ROLE
c. (1) FIRM NAME	(2) FIRM LOCATION <i>(City and State)</i>	(3) ROLE
d. (1) FIRM NAME	(2) FIRM LOCATION <i>(City and State)</i>	(3) ROLE
e. (1) FIRM NAME	(2) FIRM LOCATION <i>(City and State)</i>	(3) ROLE
f. (1) FIRM NAME	(2) FIRM LOCATION <i>(City and State)</i>	(3) ROLE

F. EXAMPLE PROJECTS WHICH BEST ILLUSTRATE PROPOSED TEAM'S QUALIFICATIONS FOR THIS CONTRACT <i>(Present as many projects as requested by the agency, or 10 projects, if not specified. Complete one Section F for each project.)</i>		20. EXAMPLE PROJECT KEY NUMBER 3
21. TITLE AND LOCATION <i>(City and State)</i> SR-A1A/Collins Avenue, Miami, FL - Complete Street	22. YEAR COMPLETED	
	PROFESSIONAL SERVICES 2011 to 2015	CONSTRUCTION <i>(If applicable)</i> 2014-2015

23. PROJECT OWNER'S INFORMATION

a. PROJECT OWNER Florida Department of Transportation - D6	b. POINT OF CONTACT NAME Heidi Solaun-Dominguez, P.E.	c. POINT OF CONTACT TELEPHONE NUMBER (305) 470-5282
--	---	---

24. BRIEF DESCRIPTION OF PROJECT AND RELEVANCE TO THIS CONTRACT *(Include scope, size, and cost)*

This 1-mile RRR roadway project in the heart of south beach includes a landscape beautification component to enhance the pedestrian space and landscape the newly created bulb outs. As Project Designer, Ms. Hansen oversaw the development of the hardscape, landscape and irrigation designs, and facilitated the coordination between the FDOT and the City of Miami Beach. Construction Costs: \$250K



25. FIRMS FROM SECTION C INVOLVED WITH THIS PROJECT

a. (1) FIRM NAME Monarch Landscape Architecture - *work performed under Keith & Schnars.	(2) FIRM LOCATION <i>(City and State)</i> Fort Lauderdale, FL	(3) ROLE Landscape Architect and Construction Observation
b. (1) FIRM NAME	(2) FIRM LOCATION <i>(City and State)</i>	(3) ROLE
c. (1) FIRM NAME	(2) FIRM LOCATION <i>(City and State)</i>	(3) ROLE
d. (1) FIRM NAME	(2) FIRM LOCATION <i>(City and State)</i>	(3) ROLE
e. (1) FIRM NAME	(2) FIRM LOCATION <i>(City and State)</i>	(3) ROLE
f. (1) FIRM NAME	(2) FIRM LOCATION <i>(City and State)</i>	(3) ROLE



City of Fort Lauderdale Fire Stations



TAB 2– Required Forms

STATEMENT OF QUALIFICATION CERTIFICATION

Please Note: All fields below must be completed. If the field does not apply to you, please note N/A in that field.

If you are a foreign corporation, you may be required to obtain a certificate of authority from the department of state, in accordance with Florida Statute §607.1501 (visit <http://www.dos.state.fl.us/>).

Company: (Legal Registration) CIMA Engineering Corp.

Address: 3313 W. Commercial Blvd., Suite # 113

City: Fort Lauderdale State: Fl. Zip: 33309

Telephone No. 954-581-1881 FAX No. 954-581-1881 Email: joseagonalez@cimaemail.com

Does your firm qualify for MBE or WBE status: MBE X WBE

ADDENDUM ACKNOWLEDGEMENT - Proposer acknowledges that the following addenda have been received and are included in the proposal:

<u>Addendum No.</u>	<u>Date Issued</u>	<u>Addendum No.</u>	<u>Date Issued</u>
<u>#1</u>	<u>4-24-18</u>	<u> </u>	<u> </u>
<u> </u>	<u> </u>	<u> </u>	<u> </u>

VARIANCES: State any variations to specifications, terms and conditions in the space provided below or reference in the space provided below all variances contained on other pages of bid, attachments or bid pages. No variations or exceptions by the Proposer will be deemed to be part of the bid submitted unless such variation or exception is listed and contained within the bid documents and referenced in the space provided below. If no statement is contained in the below space, it is hereby implied that your bid/proposal complies with the full scope of this solicitation. If this section does not apply to your bid, simply mark N/A. **If submitting your response electronically through BIDSYNC you must click the exception link if any variation or exception is taken to the specifications, terms and conditions.**

None

The below signatory hereby agrees to furnish the following article(s) or services at the price(s) and terms stated subject to all instructions, conditions, specifications addenda, legal advertisement, and conditions contained in the bid/proposal. I have read all attachments including the specifications and fully understand what is required. By submitting this signed proposal I will accept a contract if approved by the City and such acceptance covers all terms, conditions, and specifications of this bid/proposal. The below signatory also hereby agrees, by virtue of submitting or attempting to submit a response, hereby agrees that in no event shall the City's liability for respondent's indirect, incidental, consequential, special or exemplary damages, expenses, or lost profits arising out of this competitive solicitation process, including but not limited to public advertisement, bid conferences, site visits, evaluations, oral presentations, or award proceedings exceed the amount of five hundred dollars (\$500.00). This limitation shall not apply to claims arising under any provision of indemnification or the City's protest ordinance contained in this competitive solicitation.

Submitted by:

Jose A. Gonzalez

Name (printed)

04/30/18

Date:



Signature

President

Title

NON-COLLUSION STATEMENT

By signing this offer, the vendor/contractor certifies that this offer is made independently and *free* from collusion. Vendor shall disclose below any City of Fort Lauderdale, FL officer or employee, or any relative of any such officer or employee who is an officer or director of, or has a material interest in, the vendor's business, who is in a position to influence this procurement.

Any City of Fort Lauderdale, FL officer or employee who has any input into the writing of specifications or requirements, solicitation of offers, decision to award, evaluation of offers, or any other activity pertinent to this procurement is presumed, for purposes hereof, to be in a position to influence this procurement.

For purposes hereof, a person has a material interest if they directly or indirectly own more than 5 percent of the total assets or capital stock of any business entity, or if they otherwise stand to personally gain if the contract is awarded to this vendor.

In accordance with City of Fort Lauderdale, FL Policy and Standards Manual, 6.10.8.3,

3.3. City employees may not contract with the City through any corporation or business entity in which they or their immediate family members hold a controlling financial interest (e.g. ownership of five (5) percent or more).

3.4. Immediate family members (spouse, parents and children) are also prohibited from contracting with the City subject to the same general rules.

Failure of a vendor to disclose any relationship described herein shall be reason for debarment in accordance with the provisions of the City Procurement Code.

<u>NAME</u>	<u>RELATIONSHIPS</u>
None	

In the event the vendor does not indicate any names, the City shall interpret this to mean that the vendor has indicated that no such relationships exist.

LOCAL BUSINESS PREFERENCE CERTIFICATION STATEMENT

The Business identified below certifies that it qualifies for the local BUSINESS preference classification as indicated herein, and further certifies and agrees that it will re-affirm it's local preference classification annually no later than thirty (30) calendar days prior to the anniversary of the date of a contract awarded pursuant to this ITB. Violation of the foregoing provision may result in contract termination.

- (1) _____ is a **Class A** Business as defined in City of Fort Lauderdale Ordinance No. C-12-04, Sec.2-199.2. A copy of the City of Fort Lauderdale current year Business Tax Receipt and a complete list of full-time employees and their addresses shall be provided within 10 calendar days of a formal request by the City.
Business Name
- (2) CIMA Engineering Corp. is a **Class B** Business as defined in the City of Fort Lauderdale Ordinance No. C-12-04, Sec.2-199.2. A copy of the Business Tax Receipt or a complete list of full-time employees and their addresses shall be provided within 10 calendar days of a formal request by the City.
Business Name
- (3) _____ is a **Class C** Business as defined in the City of Fort Lauderdale Ordinance No. C-12-04, Sec.2-199.2. A copy of the Broward County Business Tax Receipt shall be provided within 10 calendar days of a formal request by the City.
Business Name
- (4) _____ requests a **Conditional Class A** classification as defined in the City of Fort Lauderdale Ordinance No. C-12-04, Sec.2-199.2. Written certification of intent shall be provided within 10 calendar days of a formal request by the City.
Business Name
- (5) _____ requests a **Conditional Class B** classification as defined in the City of Fort Lauderdale Ordinance No. C-12-04, Sec.2-199.2. Written certification of intent shall be provided within 10 calendar days of a formal request by the City.
Business Name
- (6) _____ is considered a **Class D** Business as defined in the City of Fort Lauderdale Ordinance No. C-12-04, Sec.2-199.2. and does not qualify for Local Preference consideration.
Business Name

BIDDER'S COMPANY: CIMA Engineering Corp.

AUTHORIZED COMPANY PERSON: Jose A. Gonzalez

NAME


SIGNATURE

4-30-18

DATE



CITY OF FORT LAUDERDALE | BUSINESS TAX DIVISION
BUSINESS TAX YEAR 2017-2018



100 N. Andrews Avenue, 1ST Floor, Fort Lauderdale, Florida 33301
(954) 828-5195

Business ID: 1600637 Business Name: GONZALEZ, JOSE
Business Address: 3313 W COMMERCIAL BLVD # 113
Tax Category: ENGINEER Tax#: 745388

Fee:

GONZALEZ, JOSE
CIMA ENGINEERING CORP
3313 W COMMERCIAL BLVD # 113
FORT LAUDERDALE, FL 33309

DETACH AND POST THIS RECEIPT IN A CONSPICUOUS PLACE

Business ID: 1600637
Tax Number: 745388
Business Name: GONZALEZ, JOSE
Business Address: 3313 W COMMERCIAL BLVD # 113
Business Contact: GONZALEZ, JOSE

- This Receipt is issued for the period commencing October 1st and ending September 30th of the years shown above.
- If you have moved out of the city, please email businesstax@fortlauderdale.gov and include the Business ID #.
- A transfer of business location within the city limits is subject to zoning approval. Complete a Business Tax Transfer Application and bring it to our office to obtain the necessary approval.
- If you have sold your business, please provide us with a copy of the Bill of Sale.
- A Transfer fee of 10% of the annual business tax fee applies. The fee shall not be less than \$3.00, nor greater than \$25.00.

Please be advised that this issuance of a Business Tax Receipt establishes that the business you intend to conduct is a use permitted by the City Zoning Code for the location at which you intend to operate. The issuance of a Business Tax Receipt in no way certifies that the property located at this address is in compliance with other provisions of the City Code of Ordinances.

BUSINESS TAX DIVISION
100 N. Andrews Avenue, 1st Floor, Fort Lauderdale, Florida 33301
Phone (954)828-5195 | Fax (954)828-5881
www.fortlauderdale.gov

CONTRACT PAYMENT METHOD BY P-CARD

The City of Fort Lauderdale has implemented a Procurement Card (P-Card) program which changes how payments are remitted to its vendors. The City has transitioned from traditional paper checks to payment by credit card via MasterCard or Visa. This allows you as a vendor of the City of Fort Lauderdale to receive your payment fast and safely. No more waiting for checks to be printed and mailed.

In accordance with Article 7, item 7.4.3 of the consultant agreement attached herein, payments for all services will be made utilizing the City's P-Card program (MasterCard or Visa). Accordingly, firms must presently have the ability to accept credit card payment or take whatever steps necessary to implement acceptance of a credit card before the commencement of the agreement.

Please indicate with which credit card you prefer to be paid:

_____ MasterCard

 X Visa Card

Company Name: CIMA Engineering Corp.

Jose A. Gonzalez

Name (printed)

4-30-18

Date:



Signature

President

Title



CERTIFICATE OF LIABILITY INSURANCE

DATE (MM/DD/YYYY)

01/11/2018

THIS CERTIFICATE IS ISSUED AS A MATTER OF INFORMATION ONLY AND CONFERS NO RIGHTS UPON THE CERTIFICATE HOLDER. THIS CERTIFICATE DOES NOT AFFIRMATIVELY OR NEGATIVELY AMEND, EXTEND OR ALTER THE COVERAGE AFFORDED BY THE POLICIES BELOW. THIS CERTIFICATE OF INSURANCE DOES NOT CONSTITUTE A CONTRACT BETWEEN THE ISSUING INSURER(S), AUTHORIZED REPRESENTATIVE OR PRODUCER, AND THE CERTIFICATE HOLDER.

IMPORTANT: If the certificate holder is an **ADDITIONAL INSURED**, the policy(ies) must have **ADDITIONAL INSURED** provisions or be endorsed. If **SUBROGATION IS WAIVED**, subject to the terms and conditions of the policy, certain policies may require an endorsement. A statement on this certificate does not confer rights to the certificate holder in lieu of such endorsement(s).

PRODUCER Jack Rice Insurance 13080 S Belcher Rd Largo FL 33773		CONTACT NAME: Commercial Lines Division PHONE (A/C, No, Ext): (727)530-0684 FAX (A/C, No): (727)532-9602 E-MAIL ADDRESS:	
INSURED CIMA Engineering Corp. 3313 W. Commercial Blvd. Suite 113 Fort Lauderdale FL 33309		INSURER(S) AFFORDING COVERAGE INSURER A: The Phoenix Insurance Co. INSURER B: The Travelers Indemnity Co. INSURER C: Travelers Casualty & Surety Co INSURER D: Scottsdale Insurance Company INSURER E: INSURER F:	
		NAIC # 19038 41297	

COVERAGES**CERTIFICATE NUMBER:** CL17121353844**REVISION NUMBER:**

THIS IS TO CERTIFY THAT THE POLICIES OF INSURANCE LISTED BELOW HAVE BEEN ISSUED TO THE INSURED NAMED ABOVE FOR THE POLICY PERIOD INDICATED. NOTWITHSTANDING ANY REQUIREMENT, TERM OR CONDITION OF ANY CONTRACT OR OTHER DOCUMENT WITH RESPECT TO WHICH THIS CERTIFICATE MAY BE ISSUED OR MAY PERTAIN, THE INSURANCE AFFORDED BY THE POLICIES DESCRIBED HEREIN IS SUBJECT TO ALL THE TERMS, EXCLUSIONS AND CONDITIONS OF SUCH POLICIES. LIMITS SHOWN MAY HAVE BEEN REDUCED BY PAID CLAIMS.

INSR LTR	TYPE OF INSURANCE	ADDL INSD	SUBR WVD	POLICY NUMBER	POLICY EFF (MM/DD/YYYY)	POLICY EXP (MM/DD/YYYY)	LIMITS
A	<input checked="" type="checkbox"/> COMMERCIAL GENERAL LIABILITY <input type="checkbox"/> CLAIMS-MADE <input checked="" type="checkbox"/> OCCUR GEN'L AGGREGATE LIMIT APPLIES PER: <input checked="" type="checkbox"/> POLICY <input checked="" type="checkbox"/> PRO-JECT <input type="checkbox"/> LOC OTHER:			6609D454727	12/16/2017	12/16/2018	EACH OCCURRENCE \$ 1,000,000 DAMAGE TO RENTED PREMISES (Ea occurrence) \$ 100,000 MED EXP (Any one person) \$ 5,000 PERSONAL & ADV INJURY \$ 1,000,000 GENERAL AGGREGATE \$ 2,000,000 PRODUCTS - COMP/OP AGG \$ 2,000,000
	<input checked="" type="checkbox"/> AUTOMOBILE LIABILITY <input checked="" type="checkbox"/> ANY AUTO OWNED AUTOS ONLY <input type="checkbox"/> SCHEDULED AUTOS <input checked="" type="checkbox"/> HIRED AUTOS ONLY <input checked="" type="checkbox"/> NON-OWNED AUTOS ONLY			BA9D438278	12/16/2017	12/16/2018	COMBINED SINGLE LIMIT (Ea accident) \$ 1,000,000 BODILY INJURY (Per person) \$ BODILY INJURY (Per accident) \$ PROPERTY DAMAGE (Per accident) \$ Medical payments \$ 2,000
	<input checked="" type="checkbox"/> UMBRELLA LIAB <input checked="" type="checkbox"/> OCCUR EXCESS LIAB <input type="checkbox"/> CLAIMS-MADE DED <input checked="" type="checkbox"/> RETENTION \$ 10,000			XSMCUP4199T220	12/16/2017	12/16/2018	EACH OCCURRENCE \$ 3,000,000 AGGREGATE \$ 3,000,000
	<input checked="" type="checkbox"/> WORKERS COMPENSATION AND EMPLOYERS' LIABILITY ANY PROPRIETOR/PARTNER/EXECUTIVE OFFICER/MEMBER EXCLUDED? (Mandatory in NH) <input type="checkbox"/> Y / N If yes, describe under DESCRIPTION OF OPERATIONS below		N/A	UB9J7751681847	01/25/2018	01/25/2019	<input checked="" type="checkbox"/> PER STATUTE <input type="checkbox"/> OTH-ER E.L. EACH ACCIDENT \$ 1,000,000 E.L. DISEASE - EA EMPLOYEE \$ 1,000,000 E.L. DISEASE - POLICY LIMIT \$ 1,000,000
D	Electronic Data Processing			CPS2998989	10/27/2017	10/27/2018	LIMIT: 100,000 DEDUCTIBLE: 1,000

DESCRIPTION OF OPERATIONS / LOCATIONS / VEHICLES (ACORD 101, Additional Remarks Schedule, may be attached if more space is required)

CERTIFICATE HOLDER**CANCELLATION**

Florida Department of Transportation 605 Suwannee Street Tallahassee FL 32399	SHOULD ANY OF THE ABOVE DESCRIBED POLICIES BE CANCELLED BEFORE THE EXPIRATION DATE THEREOF, NOTICE WILL BE DELIVERED IN ACCORDANCE WITH THE POLICY PROVISIONS. AUTHORIZED REPRESENTATIVE
---	---

© 1988-2015 ACORD CORPORATION. All rights reserved.



CERTIFICATE OF LIABILITY INSURANCE

DATE (MM/DD/YYYY)

06/19/2017

THIS CERTIFICATE IS ISSUED AS A MATTER OF INFORMATION ONLY AND CONFERS NO RIGHTS UPON THE CERTIFICATE HOLDER. THIS CERTIFICATE DOES NOT AFFIRMATIVELY OR NEGATIVELY AMEND, EXTEND OR ALTER THE COVERAGE AFFORDED BY THE POLICIES BELOW. THIS CERTIFICATE OF INSURANCE DOES NOT CONSTITUTE A CONTRACT BETWEEN THE ISSUING INSURER(S), AUTHORIZED REPRESENTATIVE OR PRODUCER, AND THE CERTIFICATE HOLDER.

IMPORTANT: If the certificate holder is an **ADDITIONAL INSURED**, the policy(ies) must have **ADDITIONAL INSURED** provisions or be endorsed. If **SUBROGATION** IS **WAIVED**, subject to the terms and conditions of the policy, certain policies may require an endorsement. A statement on this certificate does not confer rights to the certificate holder in lieu of such endorsement(s).

PRODUCER Collinsworth Ins&Risk Mgmt Services Inc P.O. Box 661628 Miami Springs FL 33266	CONTACT NAME: Erinn E Collinsworth PHONE (A/C, No, Ext): (786) 930-4795 FAX (A/C, No): (786) 930-4794 E-MAIL ADDRESS: erinn@collinsworthinsurance.com
INSURED CIMA Engineering Corp. 3313 W. Commercial Blvd. Suite 113 Fort Lauderdale FL 33309	INSURER(S) AFFORDING COVERAGE INSURER A: Liberty Insurance Underwriters INSURER B: INSURER C: INSURER D: INSURER E: INSURER F:

COVERAGES**CERTIFICATE NUMBER:** Cert ID 1795**REVISION NUMBER:**

THIS IS TO CERTIFY THAT THE POLICIES OF INSURANCE LISTED BELOW HAVE BEEN ISSUED TO THE INSURED NAMED ABOVE FOR THE POLICY PERIOD INDICATED. NOTWITHSTANDING ANY REQUIREMENT, TERM OR CONDITION OF ANY CONTRACT OR OTHER DOCUMENT WITH RESPECT TO WHICH THIS CERTIFICATE MAY BE ISSUED OR MAY PERTAIN, THE INSURANCE AFFORDED BY THE POLICIES DESCRIBED HEREIN IS SUBJECT TO ALL THE TERMS, EXCLUSIONS AND CONDITIONS OF SUCH POLICIES. LIMITS SHOWN MAY HAVE BEEN REDUCED BY PAID CLAIMS.

INSR LTR	TYPE OF INSURANCE	ADDL INSD	SUBR WVD	POLICY NUMBER	POLICY EFF (MM/DD/YYYY)	POLICY EXP (MM/DD/YYYY)	LIMITS
	COMMERCIAL GENERAL LIABILITY <input type="checkbox"/> CLAIMS-MADE <input type="checkbox"/> OCCUR GEN'L AGGREGATE LIMIT APPLIES PER: <input type="checkbox"/> POLICY <input type="checkbox"/> PRO-JECT <input type="checkbox"/> LOC <input type="checkbox"/> OTHER:						EACH OCCURRENCE DAMAGE TO RENTED PREMISES (Ea occurrence) \$ MED EXP (Any one person) \$ PERSONAL & ADV INJURY \$ GENERAL AGGREGATE \$ PRODUCTS - COMP/OP AGG \$ \$
	AUTOMOBILE LIABILITY <input type="checkbox"/> ANY AUTO <input type="checkbox"/> OWNED AUTOS ONLY <input type="checkbox"/> SCHEDULED AUTOS <input type="checkbox"/> HIRED AUTOS ONLY <input type="checkbox"/> NON-OWNED AUTOS ONLY						COMBINED SINGLE LIMIT (Ea accident) \$ BODILY INJURY (Per person) \$ BODILY INJURY (Per accident) \$ PROPERTY DAMAGE (Per accident) \$ \$
	UMBRELLA LIAB <input type="checkbox"/> OCCUR EXCESS LIAB <input type="checkbox"/> CLAIMS-MADE <input type="checkbox"/> DED <input type="checkbox"/> RETENTION \$						EACH OCCURRENCE \$ AGGREGATE \$ \$
	WORKERS COMPENSATION AND EMPLOYERS' LIABILITY ANY PROPRIETOR/PARTNER/EXECUTIVE OFFICER/MEMBER EXCLUDED? <input type="checkbox"/> Y / N (Mandatory in NH) If yes, describe under DESCRIPTION OF OPERATIONS below		N/A				PER STATUTE <input type="checkbox"/> OTH-ER <input type="checkbox"/> E.L. EACH ACCIDENT \$ E.L. DISEASE - EA EMPLOYEE \$ E.L. DISEASE - POLICY LIMIT \$
A	Professional Liability			AEXNYABHS4Z001 Claims Made Form	06/19/2017	06/19/2018	Each Claim \$ 1,000,000 Policy Aggregate \$ 2,000,000

DESCRIPTION OF OPERATIONS / LOCATIONS / VEHICLES (ACORD 101, Additional Remarks Schedule, may be attached if more space is required)

CERTIFICATE HOLDER**CANCELLATION**

CERTIFICATE HOLDER Miami-Dade County 111 N.W. 1st Street, Suite 234 Miami FL 33128	CANCELLATION SHOULD ANY OF THE ABOVE DESCRIBED POLICIES BE CANCELLED BEFORE THE EXPIRATION DATE THEREOF, NOTICE WILL BE DELIVERED IN ACCORDANCE WITH THE POLICY PROVISIONS. AUTHORIZED REPRESENTATIVE
--	---

© 1988-2015 ACORD CORPORATION. All rights reserved.