

Tunnel Top Pedestrian Plaza

November 6, 2018

Commission Conference Agenda



Deck Park- Klyde Warren Park- Dallas, TX



BEFORE



AFTER

Olympic Park- Seattle, WA



BEFORE



AFTER

Lurie Garden at Millennium Park- Chicago, IL



BEFORE



AFTER

Rehab Project: Henry E. Kinney Tunnel

PROJECT IMPROVEMENTS:

- Tunnel Rehabilitation
- Intelligent Transportation Systems (ITS)



Architectural – Vent Buildings



Structural – Ceiling Tiles



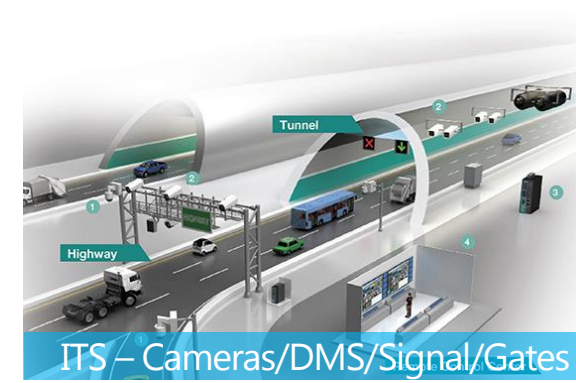
Mechanical - Fans



Electrical - Lighting



Roadway/Civil - Drainage



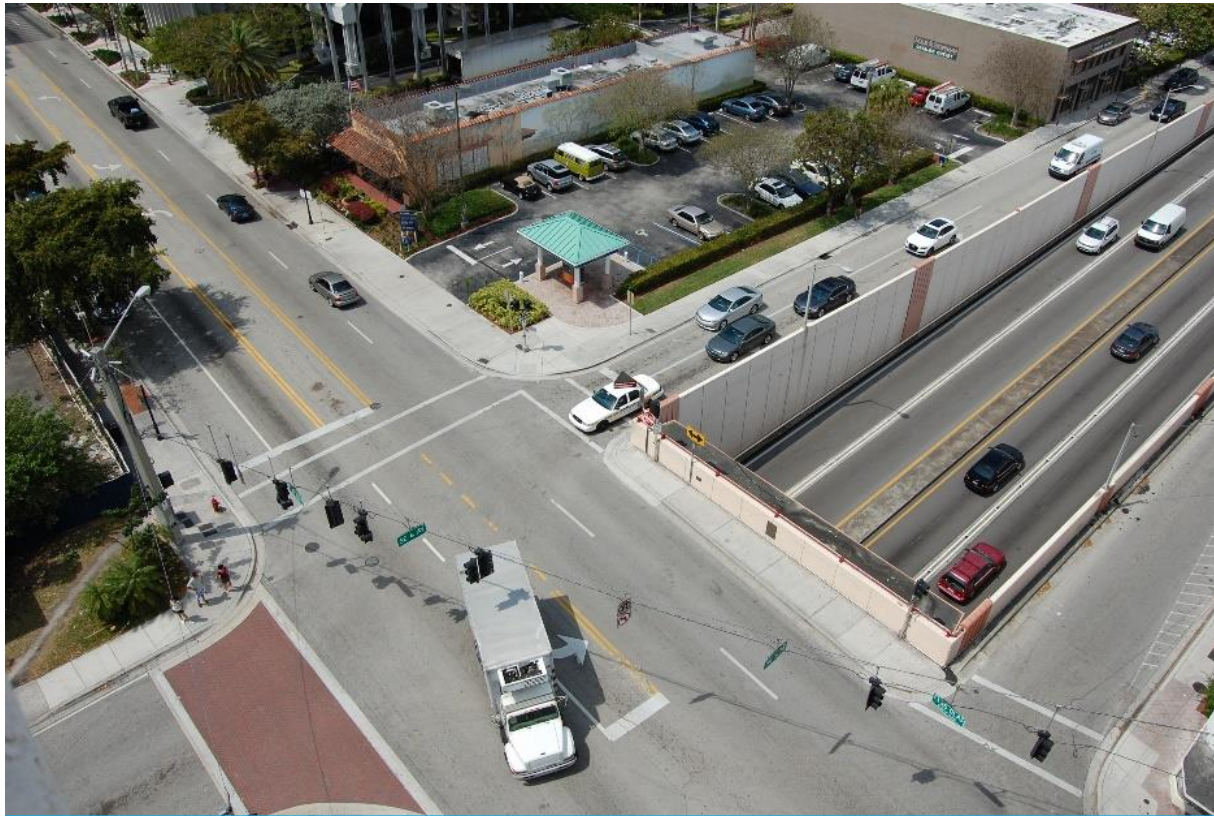
ITS – Cameras/DMS/Signal/Gates

Background

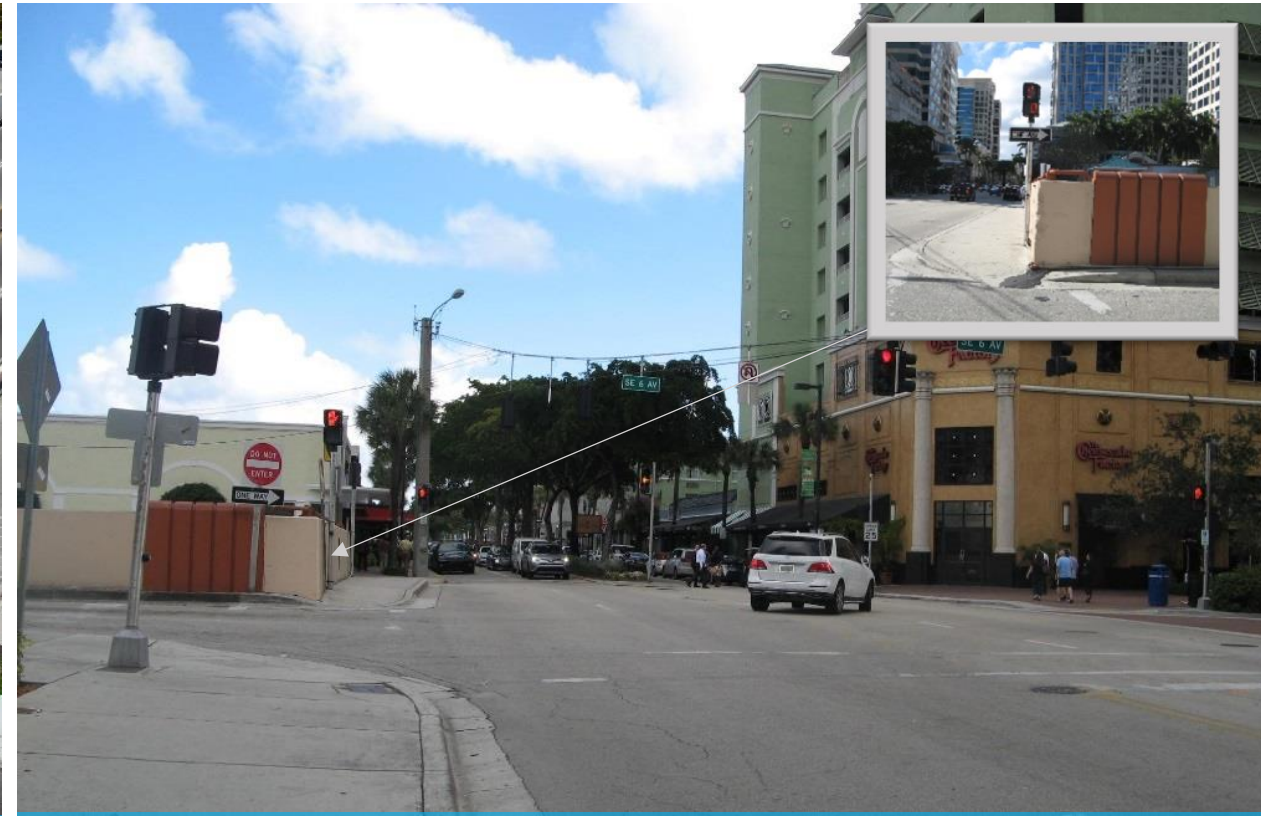
- Broward Boulevard Gateway Study
- Downtown Walkability Analysis (2012)
- Las Olas Connectivity Plan
- Structural Feasibility Study/Alternatives Analysis (2015)
- DRAFT Resource Assessment Report (Section 106 Report)
- Design Solicitation (FDOT)
- SHPO (State Historic Preservation Office) Coordination
- Bridge Design Report- 60% complete

Las Olas Blvd @ Henry E. Kinney- Safety

- 50 Crashes in 3 years- 4 crashes/1000 vehicles
- Line of sight issues for vehicles & pedestrians



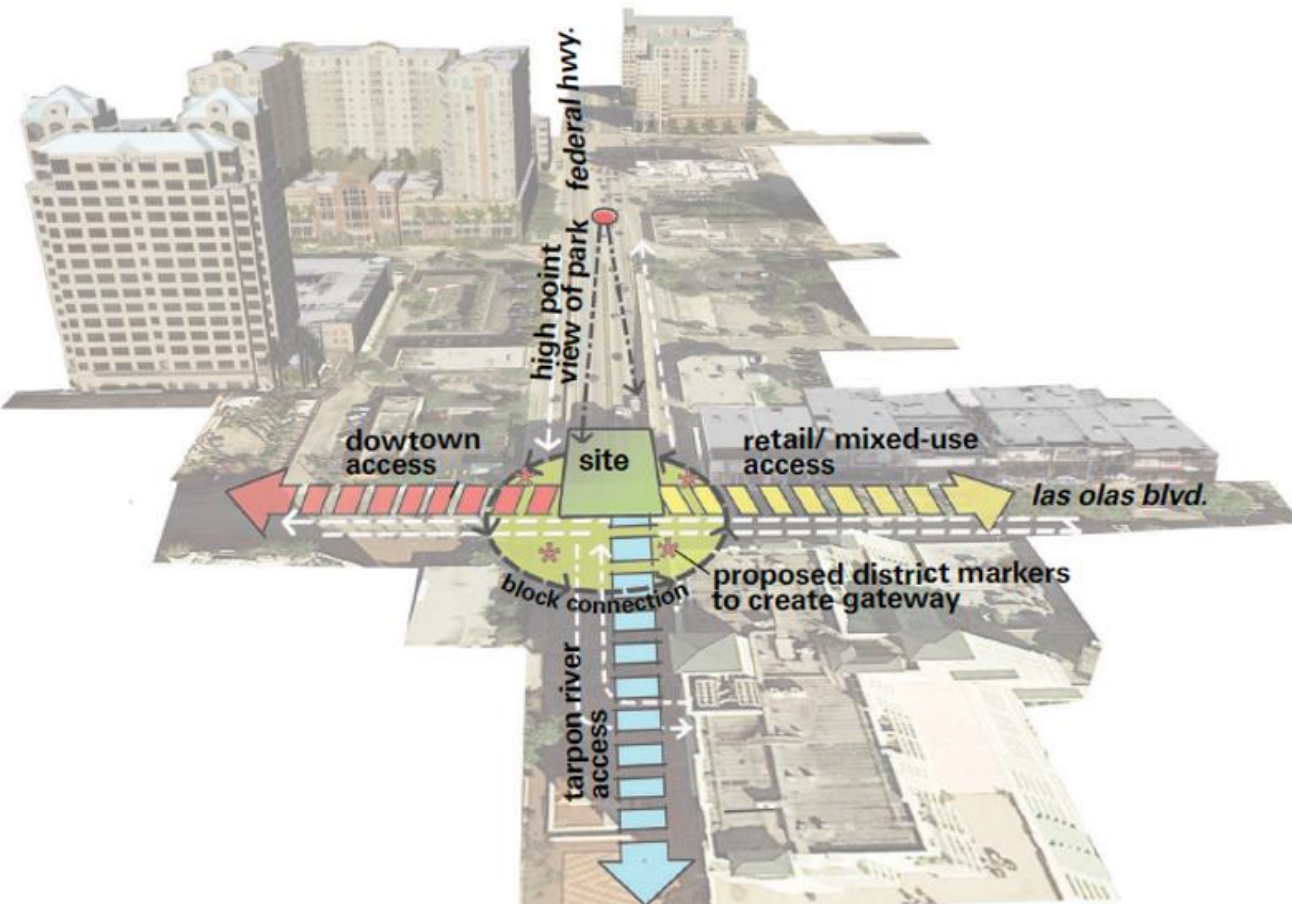
Sight Distance – SE 6th Ave and Las Olas Blvd



Existing Conditions – Las Olas Blvd

CAM 18-1250
Exhibit 1
Page 7 of 18

Pedestrian Plaza Concept

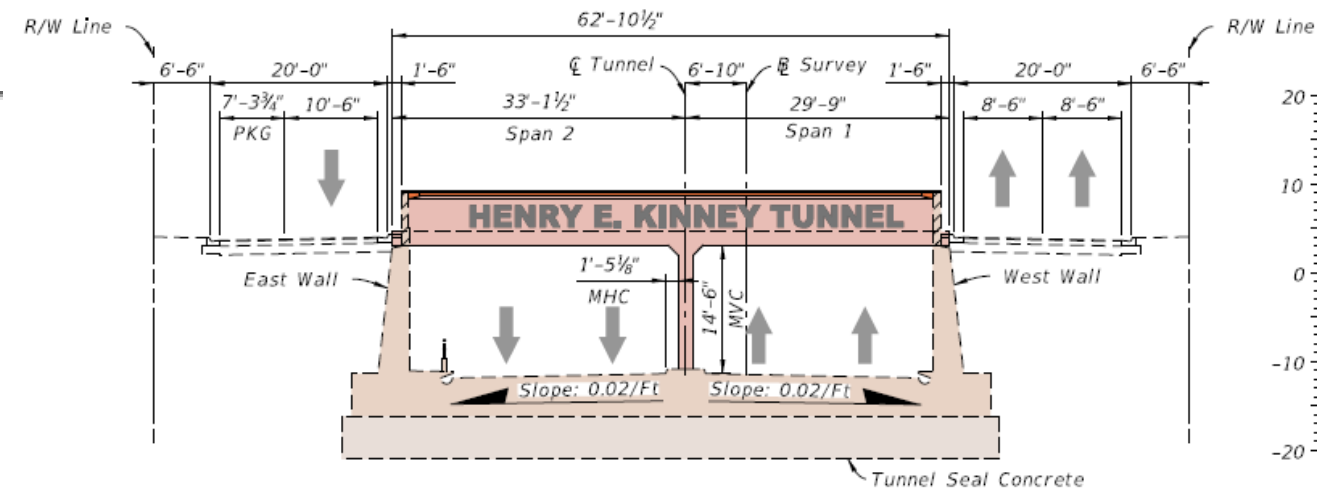
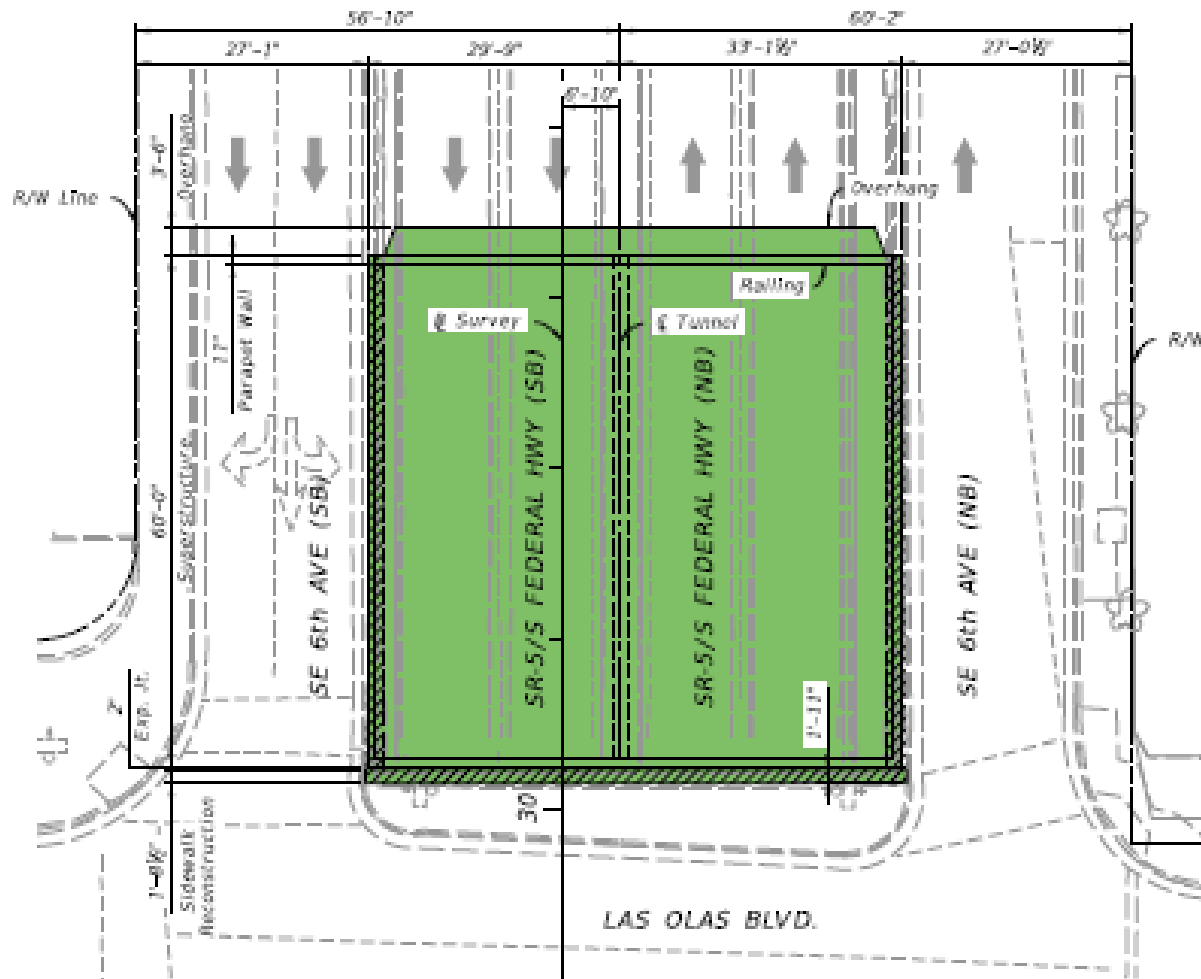


Las Olas Connectivity



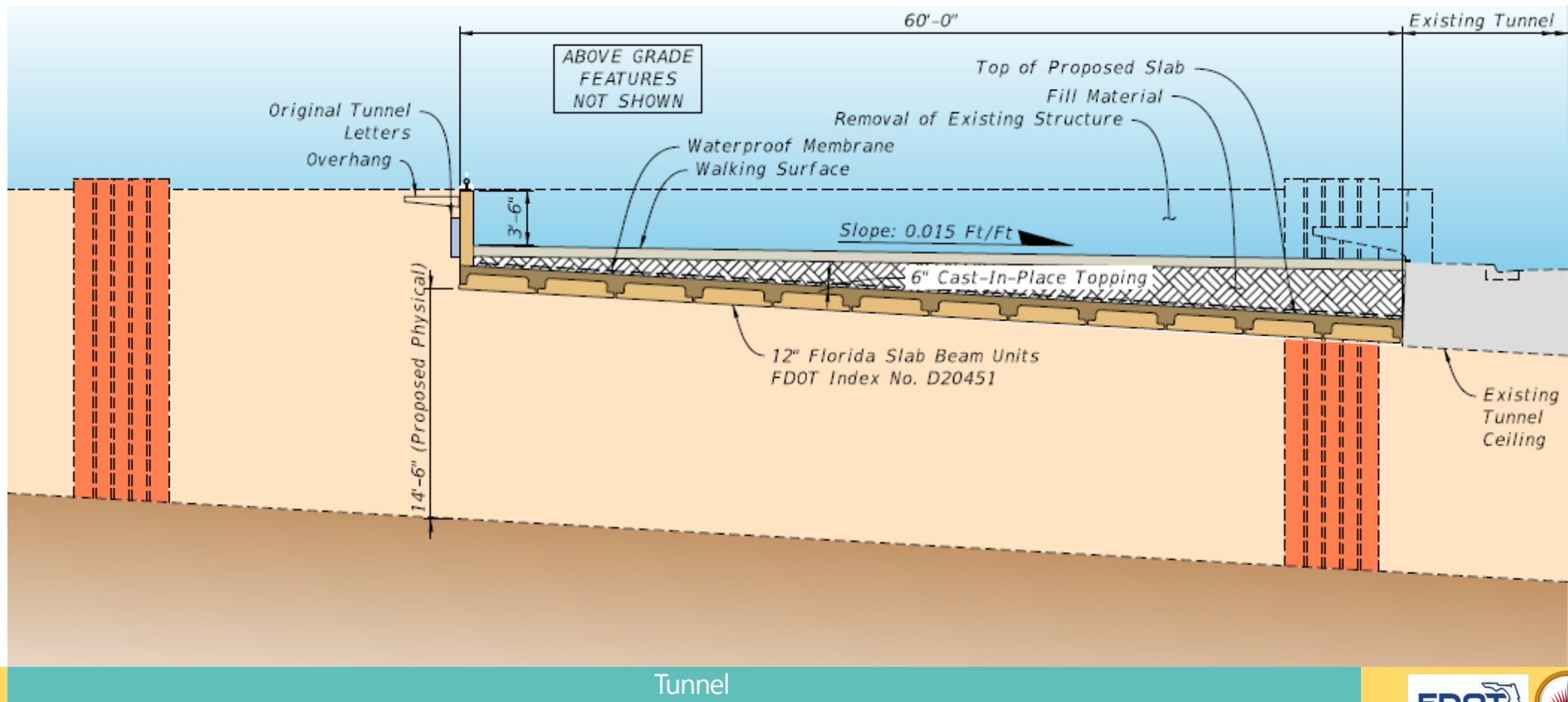
Original Concept with Stakeholders

Structural Analysis/Design



Extension of Tunnel

- Supported by existing exterior walls and new interior wall in median
- Functions as a tunnel extension (incl. Electrical, Mechanical and Life Safety)
- Aesthetics – maintains existing historical features

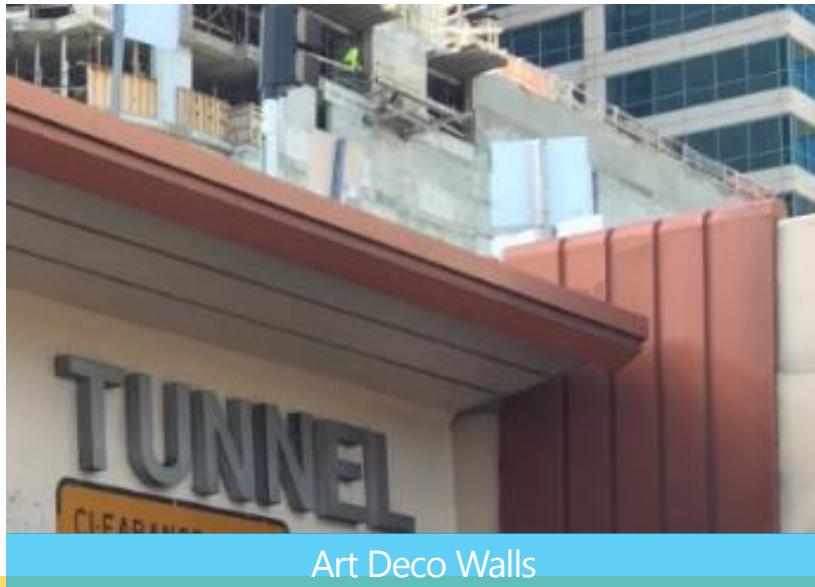


Bridge Design Report (BDR)

- Evaluated two (2) structural alternatives for:
 - Cost
 - Constructability
 - Maintainability
 - Aesthetics
 - Waterproofing
 - Electrical/Mechanical
- Finite Element Analysis (FEM) for existing tunnel structural evaluation under new loads
- Focused on minimizing noise, vibration, and construction time
- Develop two (2) Plaza Concepts - concepts (A and B)

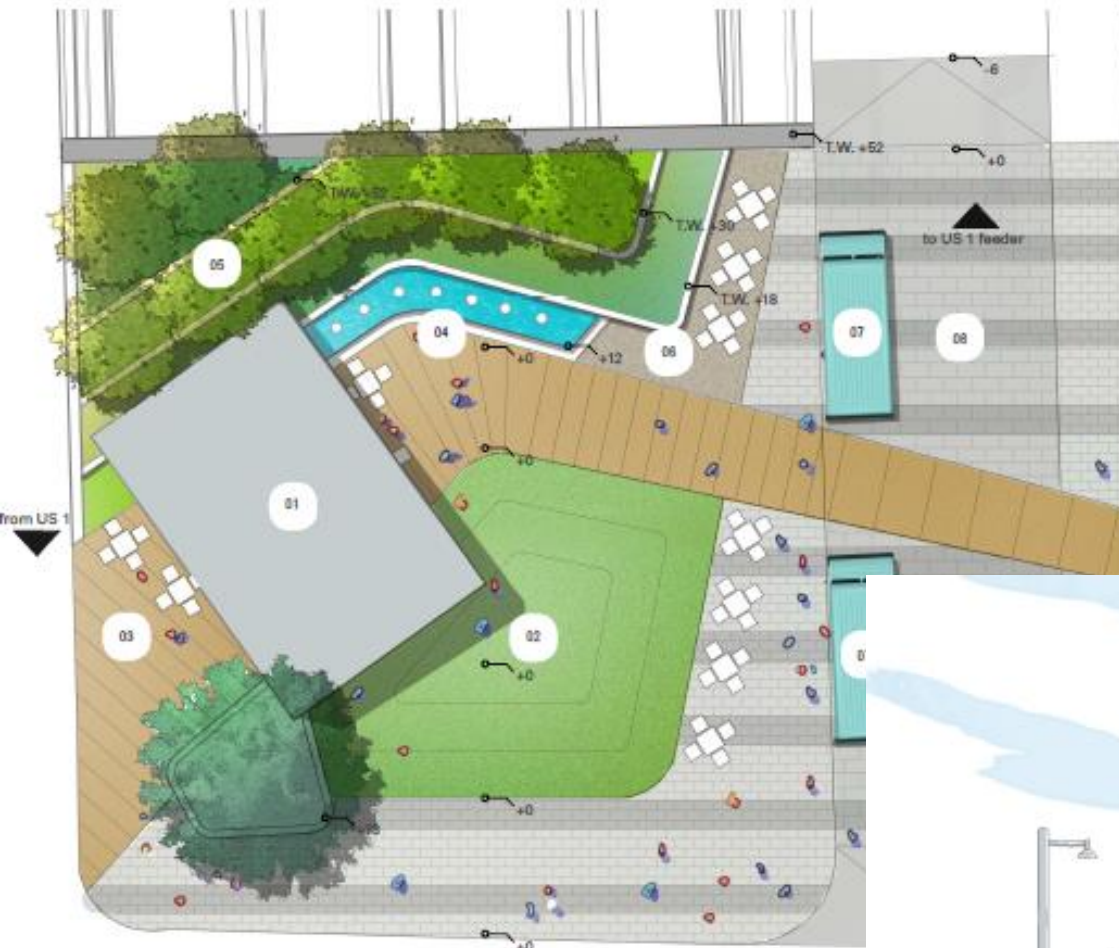
Historic Preservation

- 1926 - Federal Aid Highway Bridge opened
- 1960 – New River Tunnel Completed/Opened (Only operating public tunnel in Florida until 2014)
- 1986 - Renamed Henry E. Kinney Tunnel
- Potentially Eligible for listing in NRHP National Register of Historic Places
- Historic Elements: Ceramic Tiles, Art Deco Walls, Tunnel Entrance/Portals, Plaques
- On-going coordination with State Historic Preservation Office (SHPO) to determine adverse effects and mitigation strategies



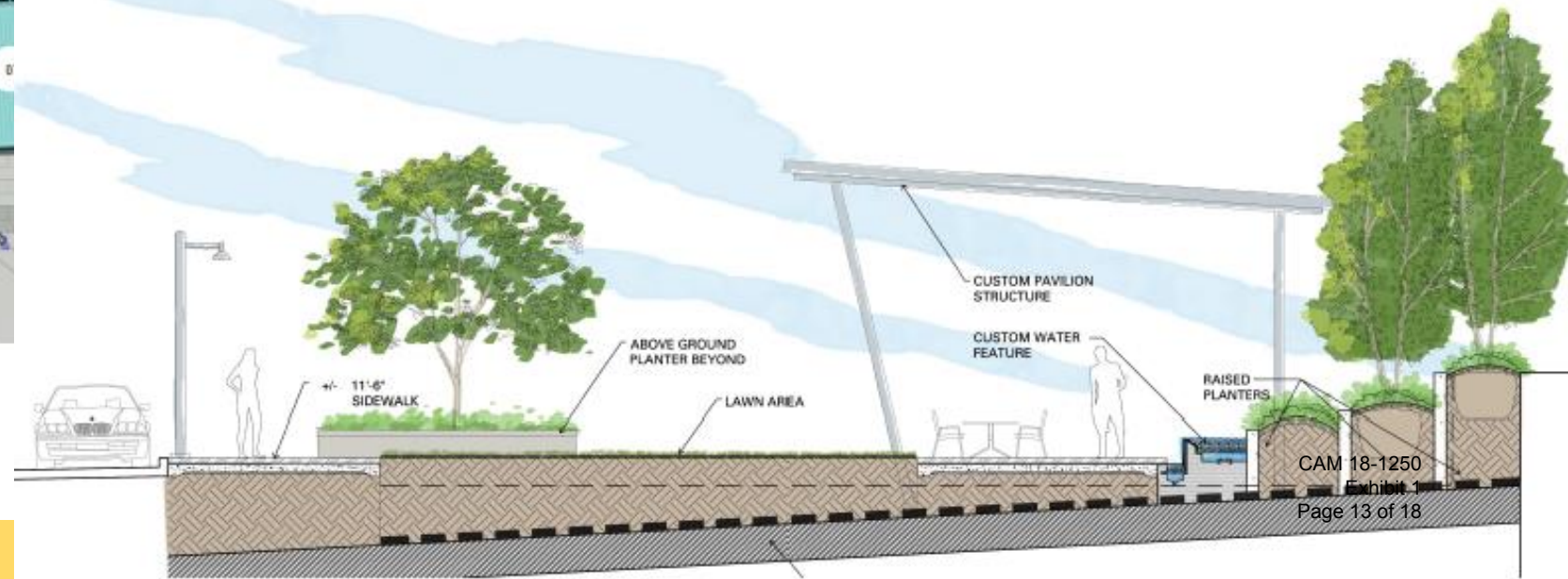
CAM 18-1250
Exhibit 1
Page 12 of 18

Pedestrian Plaza: Concept A

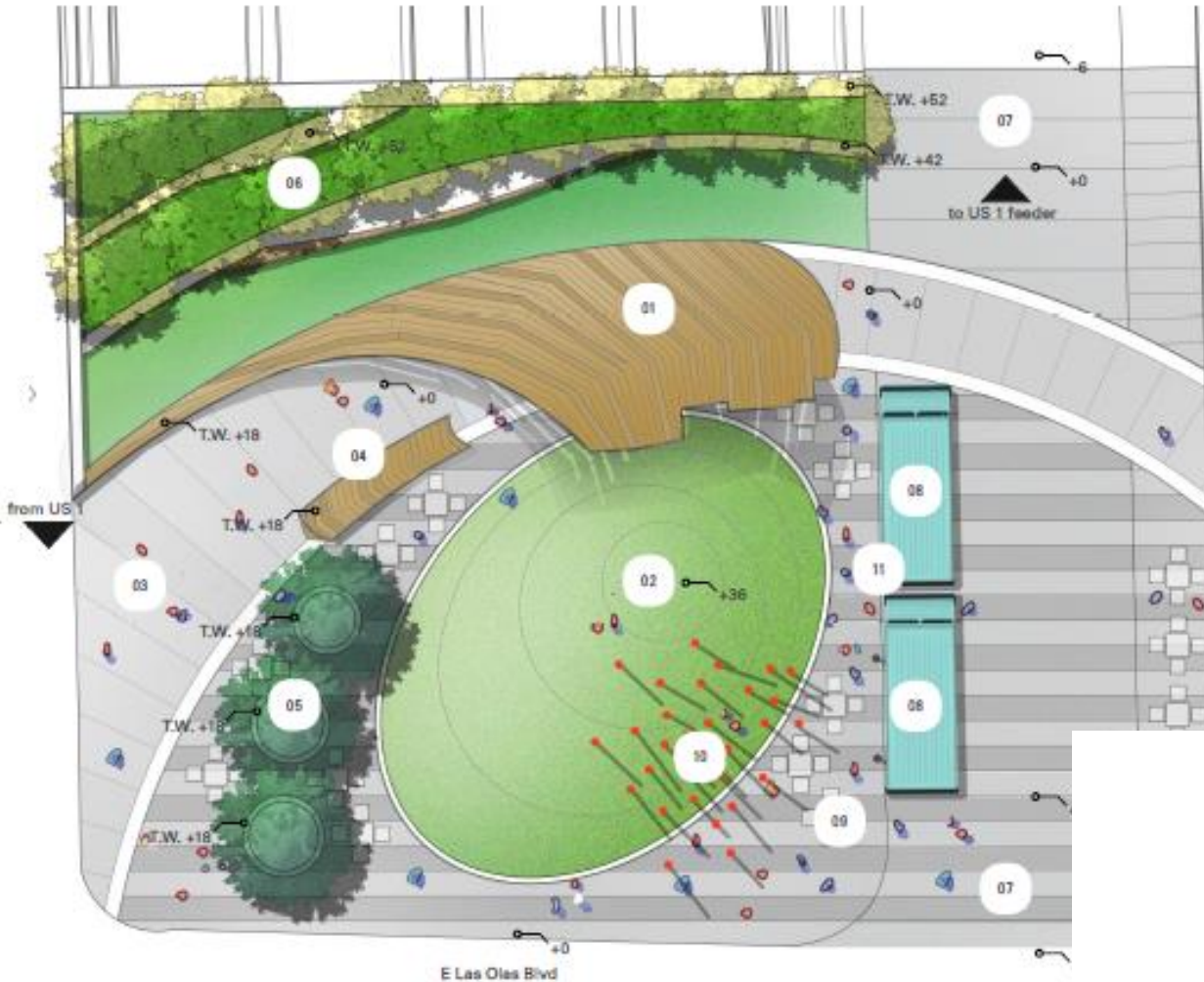


legend

- 01_ iconic architectural pavilion to anchor plaza with opportunities for vendors and food trucks
- 02_ turf
- 03_ enhanced vehicular rated pavement
- 04_ water feature to reduce traffic noise and add visual interest
- 05_ terraced planting
- 06_ decomposed granite seating area
- 07_ potential food truck/vendor parking during special events
- 08_ tabletop road section to allow plaza to expand during special events

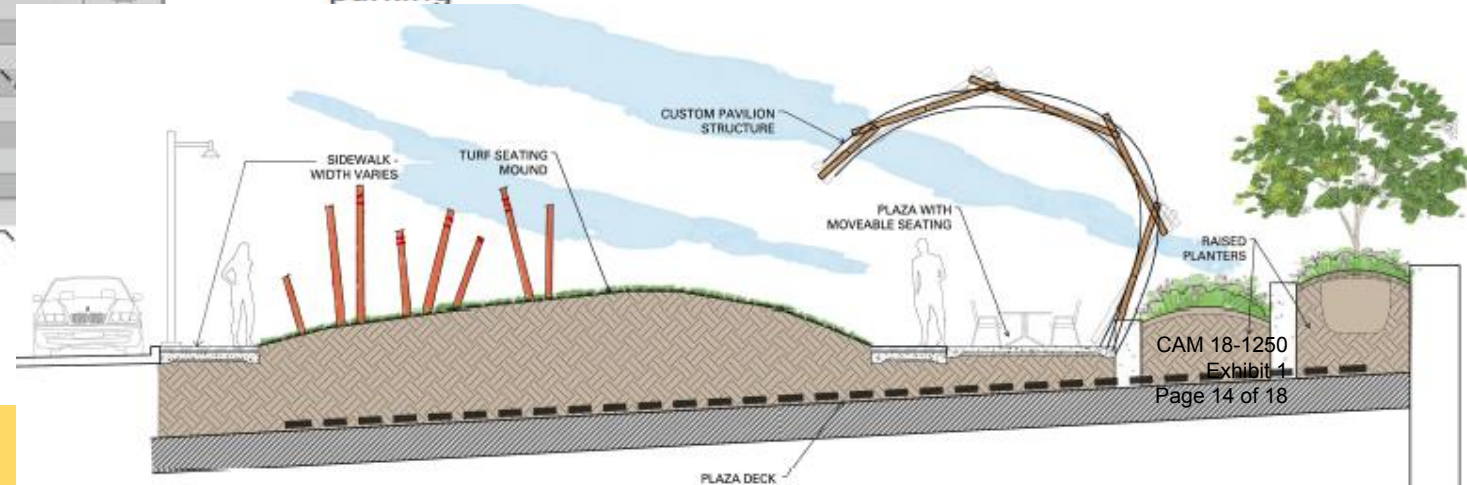


Pedestrian Plaza: Concept B



legend

- 01_ iconic architectural wave pavilion to anchor plaza
- 02_ turf seating area
- 03_ upgraded paver
- 04_ custom feature bench
- 05_ raised planter
- 06_ terraced planting
- 07_ table top crossing
- 08_ food truck parking
- 09_ plaza seating area with enhanced pavement
- 10_ vertical art element
- 11_ pedestrian light post



Intersection Improvements:



Proposed : Las Olas Boulevard and SE 6th Avenue

- Roadway Mill and Resurface Intersection Pavement
- Upgrade ADA ramps
- Reconstruct sidewalk and curb return
- Upgrade pavement markings
- Provide stamped asphalt for crosswalks
- Connect to drainage system

Project Schedule: Aligned with Tunnel Rehabilitation

- | | |
|---|------------------|
| • Finalize BDR/ 30% Initial Engineering | April 21, 2019 |
| • 60% Engineering Plans | October 15, 2019 |
| • 90% Engineering Plans | January 27, 2020 |
| • Final Engineering Plans | April 6, 2020 |
| • Construction Bidding | July 29, 2020 |

Interagency Agreements:

- Local Funding Agreement (LFA): Design, Construction
- Maintenance Agreement
- Rights-of-Way Agreement

Pedestrian Plaza Cost Estimates:

City LFA for Design in 2017-	\$498,000
• Design Survey	\$26,532
• Stakeholder concepts/presentations	\$12,000
• Geotech Boring/Structural Testing	\$59,069
• BDR Consultant	\$203,750
• SHPO Coordination/Research	\$10,000
• Final Engineering Design	\$450,000
• Construction- Concept A/Concept B	\$3.0 M/\$3.7M
• Annual Lease	Market Value (FDOT R/W)



Tunnel Top Pedestrian Plaza

November 6, 2018

Commission Conference Agenda

