

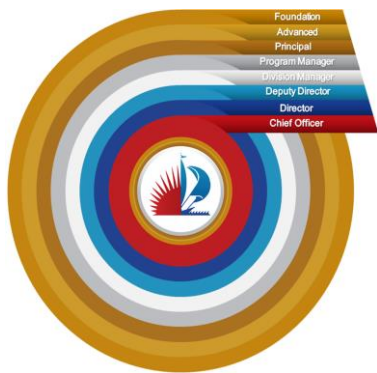
# **CLASSIFICATION TABLE NON-BARGAINING UNIT**

**EXHIBIT 4**

City of Fort Lauderdale - Classification Levels  
"Hire for Passion. Train for Success."

Title	Class Code	Classification Status	Classification Level	Management Category	Pay Grade
Accreditation Coordinator	NB001	Classified	Principal	3	G009
Administrative Aide	NB002	Classified	Foundation	0	G004
Administrative Aide *	NB003	Non-Classified	Foundation	0	G004
Administrative Assistant	NB004	Classified	Foundation	0	G006
Administrative Assistant *	NB005	Non-Classified	Foundation	0	G006
Administrative Supervisor	NB006	Classified	Principal	3	G009
Administrative Supervisor *	NB007	Non-Classified	Principal	3	G009
<u>Advanced Specialist</u>	<u>NB206</u>	<u>Classified</u>	<u>Advanced</u>	<u>4</u>	<u>G007</u>
<u>Advanced Specialist*</u>	<u>NB207</u>	<u>Non-Classified</u>	<u>Advanced</u>	<u>4</u>	<u>G007</u>
<u>Advanced Specialist II</u>	<u>NB208</u>	<u>Classified</u>	<u>Advanced</u>	<u>4</u>	<u>G008</u>
<u>Advanced Specialist II*</u>	<u>NB209</u>	<u>Non-Classified</u>	<u>Advanced</u>	<u>4</u>	<u>G008</u>
Agenda Supervisor*	NB008	Non-Classified	Principal	3	G010
Airport Manager	NB009	Non-Classified	Division Manager	1	G013
Airport Operations Supervisor	NB010	Classified	Principal	3	G009
Application Services Manager	NB011	Non-Classified	Division Manager	1	G013
Aquatic Complex Coordinator	NB013	Classified	Advanced	4	G008
Aquatic Complex Manager	NB012	Classified	Program Manager	2	G011
Assistant Airport Manager	NB014	Classified	Program Manager	2	G011
Assistant Budget Manager *	NB015	Non-Classified	Program Manager	2	G012
Assistant Building Official	NB016	Non-Classified	Division Manager	1	M016
Assistant City Attorney I	NB017	Non-Classified	Principal	3	G010
Assistant City Attorney II	NB018	Non-Classified	Division Manager	1	G013
Assistant City Attorney III	NB019	Non-Classified	Deputy/Assistant Director	1	M017

\* Administrative Assistant to the City Manager



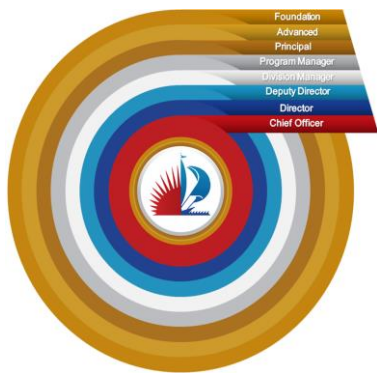
## CLASSIFICATION TABLE NON-BARGAINING UNIT

EXHIBIT 4

City of Fort Lauderdale - Classification Levels  
"Hire for Passion. Train for Success."

Title	Class Code	Classification Status	Classification Level	Management Category	Pay Grade
Assistant City Auditor I	NB020	Non-Classified	Principal	3	G010
Assistant City Auditor II	NB021	Non-Classified	Division Manager	1	G013
Assistant City Auditor III	NB022	Non-Classified	Deputy/Assistant Director	1	M016
Assistant City Clerk I	NB023	Non-Classified	Foundation	0	G003
Assistant City Clerk II	NB024	Non-Classified	Advanced	0	G006
Assistant City Clerk III	NB025	Non-Classified	Advanced	0	G007
Assistant City Clerk IV	NB026	Non-Classified	Principal	3	G009
Assistant City Manager	NB027	Non-Classified	Chief Officer	1	M019
Assistant Controller	NB028	Classified	Program Manager	2	G012
Assistant Director	NB029	Non-Classified	Deputy/Assistant Director	1	M016
Assistant Employee Relations Manager	NB030	Classified	Program Manager	2	G011
Assistant Fire Rescue Chief	NB031	Non-Classified	Deputy/Assistant Director	1	M016
Assistant Housing and Community Development Manager *	NB032	Non-Classified	Program Manager	2	G011
Assistant Manager	NB033	Classified	Program Manager	2	G012
Assistant Manager *	NB034	Non-Classified	Program Manager	2	G012
Assistant Neighbor Support Manager *	NB035	Non-Classified	Program Manager	2	G011
Assistant Parking Services Manager	NB036	Classified	Program Manager	2	G011
Assistant Police Chief	NB037	Non-Classified	Deputy/Assistant Director	1	M017
Assistant Procurement and Contracts Manager	NB038	Classified	Program Manager	2	G011
Assistant Public Works Director - Engineering	NB039	Non-Classified	Deputy/Assistant Director	1	M016
Assistant Public Works Director - Sustainability	NB040	Non-Classified	Deputy/Assistant Director	1	M016
Assistant Public Works Director - Utilities	NB041	Non-Classified	Deputy/Assistant Director	1	M016

\* Administrative Assistant to the City Manager



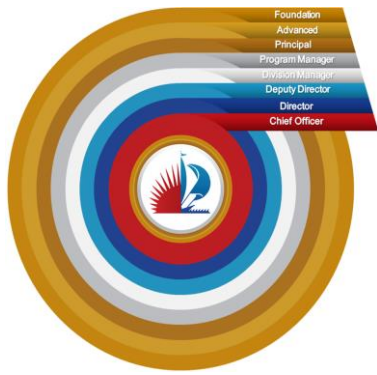
# **CLASSIFICATION TABLE NON-BARGAINING UNIT**

**EXHIBIT 4**

City of Fort Lauderdale - Classification Levels  
"Hire for Passion. Train for Success."

Title	Class Code	Classification Status	Classification Level	Management Category	Pay Grade
Assistant Revenue Collection Manager	NB042	Classified	Principal	3	G009
Assistant Risk Manager	NB043	Classified	Program Manager	2	G012
Assistant Strategic Communications Manager *	NB044	Non-Classified	Program Manager	2	G011
Assistant Structural Innovation Manager *	NB045	Non-Classified	Program Manager	2	G011
Assistant to the City Manager *	NB046	Non-Classified	Principal	3	G009
Assistant to the Director	NB047	Classified	Principal	3	G009
Auditorium Manager	NB048	Classified	Program Manager	2	G011
Auditorium Supervisor	NB049	Classified	Advanced	4	G008
Benefits Analyst	NB050	Classified	Principal	3	G010
Benefits Specialist	NB051	Classified	Advanced	0	G007
<u>Body Worn Camera Administrator</u>	<u>NB201</u>	<u>Classified</u>	<u>Principal</u>	<u>3</u>	<u>G009</u>
Budget and Management Analyst*	NB052	Non-Classified	Advanced	4	G009
Budget Director	NB053	Non-Classified	Deputy/Assistant Director	1	M017
Building Official	NB054	Non-Classified	Deputy/Assistant Director	1	M017
Business Operations Manager	NB055	Classified	Program Manager	2	G011
Cemetery Administrator	NB056	Classified	Program Manager	2	G011
Chief - Fire Rescue	NB057	Non-Classified	Director	1	M018
Chief - Police	NB058	Non-Classified	Director	1	M018
<u>Chief Building Compliance Inspector</u>	<u>NB202</u>	<u>Classified</u>	<u>Program Manager</u>	<u>2</u>	<u>G013</u>
Chief Building Inspector	NB059	Classified	Program Manager	2	G013
<u>Chief Education Officer</u>	<u>NB203</u>	<u>Non-Classified</u>	<u>Program Manager</u>	<u>2</u>	<u>G011</u>
Chief Electrical Inspector	NB060	Classified	Program Manager	2	G013
Chief Engineer	NB061	Classified	Program Manager	2	G013

\* Administrative Assistant to the City Manager



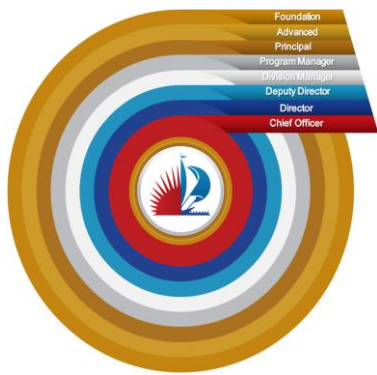
# **CLASSIFICATION TABLE NON-BARGAINING UNIT**

**EXHIBIT 4**

City of Fort Lauderdale - Classification Levels  
"Hire for Passion. Train for Success."

Title	Class Code	Classification Status	Classification Level	Management Category	Pay Grade
Chief Mechanical Inspector	NB062	Classified	Program Manager	2	G013
Chief Plumbing Inspector	NB063	Classified	Program Manager	2	G013
Chief Service Officer *	NB064	Non-Classified	Program Manager	2	G012
Chief Zoning Examiner	NB065	<u>Classified</u>	<u>Program Manager</u>	<u>2</u>	<u>G013</u>
Claims Adjuster	NB066	Classified	Advanced	4	G008
Claims Analyst	NB067	Classified	Principal	3	G010
Code Compliance Coordinator	NB068	Classified	Principal	3	G010
Code Compliance Manager	NB069	Non-Classified	Division Manager	1	G013
Commission Assistant	NB070	Non-Classified	Advanced	0	G007
<u>Commission Assistant II</u>	<u>NB205</u>	<u>Non-Classified</u>	<u>Advanced</u>	<u>0</u>	<u>G008</u>
Commission Assistant Coordinator	NB071	Non-Classified	Program Manager	2	G012
Community Program Coordinator	NB072	Classified	Principal	3	G010
Community Redevelopment Agency Manager	NB073	Non-Classified	Deputy/Assistant Director	1	M017
Controller	NB074	Non-Classified	Division Manager	1	G013
CRA Accounting Clerk *	NB075	Non-Classified	Foundation	0	G006
CRA Administrative Aide *	NB076	Non-Classified	Advanced	0	G007
CRA Administrative Specialist *	NB077	Non-Classified	Foundation	0	G005
CRA Business Manager *	NB078	Non-Classified	Program Manager	2	G011
CRA Housing and Economic Development Manager *	NB079	Non-Classified	Program Manager	2	G012
CRA Planner *	NB080	Non-Classified	Principal	3	G010
CRA Project Coordinator *	NB081	Non-Classified	Advanced	4	G008
CRA Project Manager *	NB082	Non-Classified	Principal	3	G011
CRA Senior Project Manager *	NB083	Non-Classified	Program Manager	2	G012

\* Administrative Assistant to the City Manager

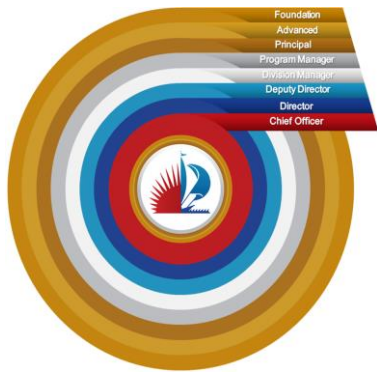


## CLASSIFICATION TABLE NON-BARGAINING UNIT

EXHIBIT 4

City of Fort Lauderdale - Classification Levels  
"Hire for Passion. Train for Success."

Title	Class Code	Classification Status	Classification Level	Management Category	Pay Grade
Customer Service Supervisor	NB084	Classified	Advanced	4	G008
Deputy City Clerk	NB085	Non-Classified	Division Manager	1	G013
Deputy Director	NB086	Non-Classified	Deputy/Assistant Director	1	M017
Deputy Director - Finance	NB087	Non-Classified	Deputy/Assistant Director	1	M017
Deputy Director - Human Resources	NB088	Non-Classified	Deputy/Assistant Director	1	M017
Deputy Director - Information Technology Services	NB089	Non-Classified	Deputy/Assistant Director	1	M017
Deputy Director - Parks and Recreation	NB090	Non-Classified	Deputy/Assistant Director	1	M017
Deputy Director - Public Works	NB091	Non-Classified	Deputy/Assistant Director	1	M017
Deputy Director - Sustainable Development	NB092	Non-Classified	Deputy/Assistant Director	1	M017
Deputy Director - Transportation and Mobility	NB093	Non-Classified	Deputy/Assistant Director	1	M017
Deputy Fire Rescue Chief	NB094	Non-Classified	Deputy/Assistant Director	1	M017
Director	NB095	Non-Classified	Director	1	M018
Director - Finance	NB096	Non-Classified	Director	1	M018
Director - Human Resources	NB097	Non-Classified	Director	1	M018
Director - Information Technology Services	NB098	Non-Classified	Director	1	M018
Director - Parks and Recreation	NB099	Non-Classified	Director	1	M018
Director - Public Works	NB100	Non-Classified	Director	1	M018
Director - Sustainable Development	NB101	Non-Classified	Director	1	M018
Director - Transportation and Mobility	NB102	Non-Classified	Director	1	M018
Distribution and Collection Supervisor	NB103	Classified	Principal	3	G010
Division Manager	NB104	Non-Classified	Division Manager	1	G013
Economic and Business Development Manager	NB105	Non-Classified	Division Manager	1	G013



## CLASSIFICATION TABLE NON-BARGAINING UNIT

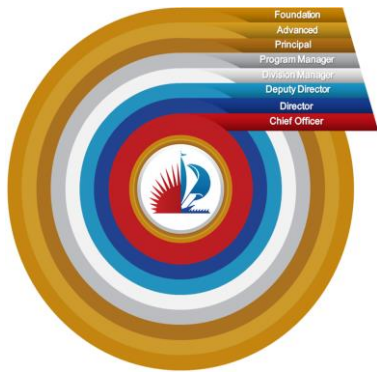
EXHIBIT 4

City of Fort Lauderdale - Classification Levels  
"Hire for Passion. Train for Success."

Title	Class Code	Classification Status	Classification Level	Management Category	Pay Grade
Employee Relations Manager	NB106	Non-Classified	Division Manager	1	G013
Environmental Compliance Manager	NB107	Classified	Program Manager	2	G012
Environmental Compliance Supervisor	NB108	Classified	Principal	3	G010
Executive Assistant to the City Manager *	NB109	Non-Classified	Principal	3	G009
Facilities Manager	NB110	Classified	Program Manager	2	G012
<u>Family Service Coordinator</u>	<u>NB204</u>	<u>Classified</u>	<u>Advanced</u>	<u>4</u>	<u>G008</u>
Financial Administrator	NB111	Classified	Advanced	4	G009
Fire Marshal	NB112	Non-Classified	Deputy/Assistant Director	1	M017
Geographic Information Systems Manager	NB113	Classified	Program Manager	2	G012
Graphic Designer *	NB114	Non-Classified	Foundation	0	G006
Housing and Community Development Coordinator*	NB115	Non-Classified	Principal	3	G009
Housing and Community Development Manager *	NB116	Non-Classified	Division Manager	1	G013
Housing and Community Development Specialist *	NB117	Non-Classified	Advanced	4	G008
Housing Rehabilitation Specialist *	NB118	Non-Classified	Foundation	0	G005
Human Resources Analyst	NB119	Classified	Advanced	4	G010
Human Resources Assistant	NB120	Classified	Foundation	0	G005
Human Resources Manager - Benefits	NB121	Classified	Program Manager	2	G012
Human Resources Manager - Classification and Compensation	NB122	Classified	Program Manager	2	G012
Human Resources Manager - Organizational Development and Learning	NB123	Classified	Program Manager	2	G012
Human Resources Manager - Recruitment	NB124	Classified	Program Manager	2	G012
Human Resources Specialist	NB125	Classified	Advanced	4	G008
Human Resources Technician	NB126	Classified	Advanced	0	G007

\* Administrative Assistant to the City Manager





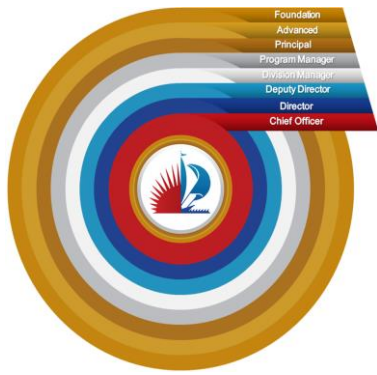
## CLASSIFICATION TABLE NON-BARGAINING UNIT

EXHIBIT 4

City of Fort Lauderdale - Classification Levels  
"Hire for Passion. Train for Success."

Title	Class Code	Classification Status	Classification Level	Management Category	Pay Grade
Land Development Manager	NB127	<u>Non-Classified</u>	<u>Division Manager</u>	<u>1</u>	<u>G013</u>
Law Office Manager	NB128	Classified	Program Manager	2	G012
Learning and Development Specialist	NB129	Classified	Principal	3	G009
Legal Administrative Assistant	NB130	Classified	Advanced	0	G007
Legal Assistant	NB131	Classified	Foundation	0	G006
Management Analyst	NB132	Classified	Advanced	4	G009
Management Analyst *	NB133	Non-Classified	Advanced	4	G009
Marine Facilities Manager	NB134	Classified	Program Manager	2	G011
Neighbor Support Manager *	NB135	Non-Classified	Division Manager	1	G013
Nighttime Economy Manager *	NB136	Non-Classified	Division Manager	1	G013
Occupational Safety and Training Coordinator	NB137	Classified	Principal	3	G010
Ocean Rescue Chief	NB138	Classified	Program Manager	2	G011
Organizational Development and Learning Coordinator	NB139	Classified	Principal	3	G010
Paralegal	NB140	Classified	Advanced	0	G009
Parking Enforcement Operations Supervisor	NB141	Classified	Advanced	4	G008
Parking Facility Maintenance Supervisor	NB142	Classified	Advanced	4	G008
Parking Services Manager	NB143	Non-Classified	Division Manager	1	G013
Parks Manager	NB144	Classified	Program Manager	2	G011
Parks Operations Superintendent	NB145	Classified	Program Manager	2	G012
Payroll Manager	NB146	Classified	Principal	3	G010
Payroll Specialist	NB147	Classified	Advanced	0	G008
Payroll Supervisor	NB148	Classified	Principal	3	G009
Planning Assistant	NB149	Classified	Foundation	0	G005

\* Administrative Assistant to the City Manager



## CLASSIFICATION TABLE NON-BARGAINING UNIT

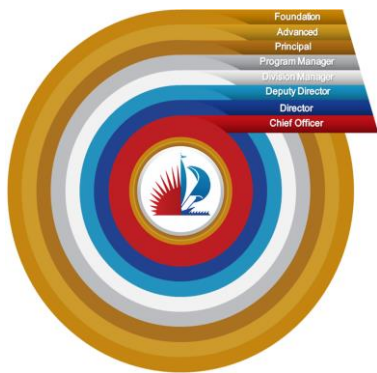
EXHIBIT 4

City of Fort Lauderdale - Classification Levels  
"Hire for Passion. Train for Success."

Title	Class Code	Classification Status	Classification Level	Management Category	Pay Grade
Police Armorer	NB150	Classified	Advanced	4	G007
Police Information Technology Manager	NB151	Non-Classified	Division Manager	1	G013
Police Major	NB152	Non-Classified	Deputy/Assistant Director	1	M016
Police Psychologist	NB153	Classified	Program Manager	2	G012
Principal Budget and Management Analyst *	NB154	Non-Classified	Principal	3	G011
Principal Commission Assistant	NB155	Non-Classified	Principal	3	G010
Principal Commission Assistant - Mayor	NB156	Non-Classified	Principal	3	G010
<u>Principal Specialist</u>	<u>NB210</u>	<u>Classified</u>	<u>Principal</u>	<u>3</u>	<u>G009</u>
<u>Principal Specialist*</u>	<u>NB211</u>	<u>Non-Classified</u>	<u>Principal</u>	<u>3</u>	<u>G009</u>
<u>Principal Specialist II</u>	<u>NB212</u>	<u>Classified</u>	<u>Principal</u>	<u>3</u>	<u>G010</u>
<u>Principal Specialist II*</u>	<u>NB213</u>	<u>Non-Classified</u>	<u>Principal</u>	<u>3</u>	<u>G010</u>
Procurement and Contracts Manager	NB157	Non-Classified	Division Manager	1	G013
Professional Standards Manager *	NB158	Non-Classified	Division Manager	1	G013
<u>Program Manager I</u>	<u>NB214</u>	<u>Classified</u>	<u>Program Manager</u>	<u>2</u>	<u>G011</u>
<u>Program Manager I*</u>	<u>NB215</u>	<u>Non-Classified</u>	<u>Program Manager</u>	<u>2</u>	<u>G011</u>
<u>Program Manager II</u>	NB159	Classified	Program Manager	2	G012
<u>Program Manager II*</u>	NB160	Non-Classified	Program Manager	2	G012
Public Safety Administrator	NB161	Non-Classified	Division Manager	1	G013
Receptionist	NB162	Classified	Foundation	0	G002
Revenue Collections Manager	NB163	Non-Classified	Division Manager	1	G013
Risk Manager	NB164	Non-Classified	Division Manager	1	G013
Senior Accounting Clerk	NB165	Classified	Foundation	0	G006
Senior Accounting Clerk *	NB166	Non-Classified	Foundation	0	G006

\* Administrative Assistant to the City Manager





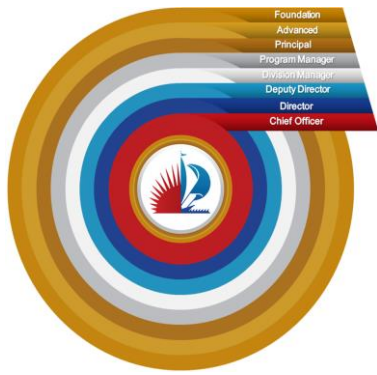
## CLASSIFICATION TABLE NON-BARGAINING UNIT

EXHIBIT 4

City of Fort Lauderdale - Classification Levels  
"Hire for Passion. Train for Success."

Title	Class Code	Classification Status	Classification Level	Management Category	Pay Grade
Senior Administrative Assistant	NB167	Classified	Advanced	4	G008
Senior Administrative Assistant *	NB168	Non-Classified	Advanced	4	G008
Senior Assistant City Attorney	NB169	Non-Classified	Director	1	M018
Senior Assistant to the City Manager *	NB170	Non-Classified	Program Manager	2	G012
Senior Assistant to the Director	NB171	Classified	Program Manager	2	G012
Senior Budget and Management Analyst *	NB172	Non-Classified	Principal	3	G010
Senior Claims Adjuster	NB173	Classified	Principal	3	G010
Senior Commission Assistant	NB174	Non-Classified	Advanced	4	G009
Senior Commission Assistant - Mayor	NB175	Non-Classified	Advanced	4	G009
Senior Financial Administrator	NB176	Classified	Principal	3	G010
Senior Human Resources Analyst	NB177	Classified	Principal	3	G011
Senior Legal Assistant	NB178	Classified	Advanced	0	G007
Senior Management Analyst	NB179	Classified	Principal	3	G010
Senior Management Analyst *	NB180	Non-Classified	Principal	3	G010
Senior Strategic Communications Specialist *	NB181	Non-Classified	Principal	3	G010
Stormwater Operations Manager	NB182	Non-Classified	Division Manager	1	G013
Strategic Communications Manager *	NB183	Non-Classified	Division Manager	1	G013
Strategic Communications Specialist *	NB184	Non-Classified	Principal	3	G009
Structural Innovation Manager *	NB185	Non-Classified	Deputy/Assistant Director	1	M016
Surveyor	NB186	Classified	Program Manager	2	G011
Sustainability Analyst	NB187	Classified	Advanced	4	G008
Sustainability Manager	NB188	Classified	Program Manager	2	G012
Talent Manager	NB189	Non-Classified	Division Manager	1	G013

\* Administrative Assistant to the City Manager



## CLASSIFICATION TABLE NON-BARGAINING UNIT

EXHIBIT 4

City of Fort Lauderdale - Classification Levels  
"Hire for Passion. Train for Success."

Title	Class Code	Classification Status	Classification Level	Management Category	Pay Grade
Technology Infrastructure and Operations Manager	NB190	Non-Classified	Division Manager	1	G013
Telecommunications Coordinator	NB191	Classified	Principal	3	G011
Telecommunications Manager	NB192	Classified	Program Manager	2	G012
Transportation Manager	NB193	Non-Classified	Division Manager	1	G013
Treasurer	NB194	Non-Classified	Division Manager	1	G013
Urban Design and Planning Manager	NB195	Non-Classified	Division Manager	1	G013
Utilities Distribution and Collection Systems Manager	NB196	Non-Classified	Division Manager	1	G013
Wastewater Facilities Manager	NB197	Classified	Program Manager	2	G011
Water and Wastewater Treatment Manager	NB198	Non-Classified	Division Manager	1	G013
Water Facilities Manager	NB199	Classified	Program Manager	2	G011
Zoning Administrator	NB200	<u>Non-Classified</u>	<u>Division Manager</u>	<u>1</u>	<u>G013</u>