

Leg 2 - Runners will enter the City of Fort Lauderdale on the sidewalk along A1A near Flamingo Ave.

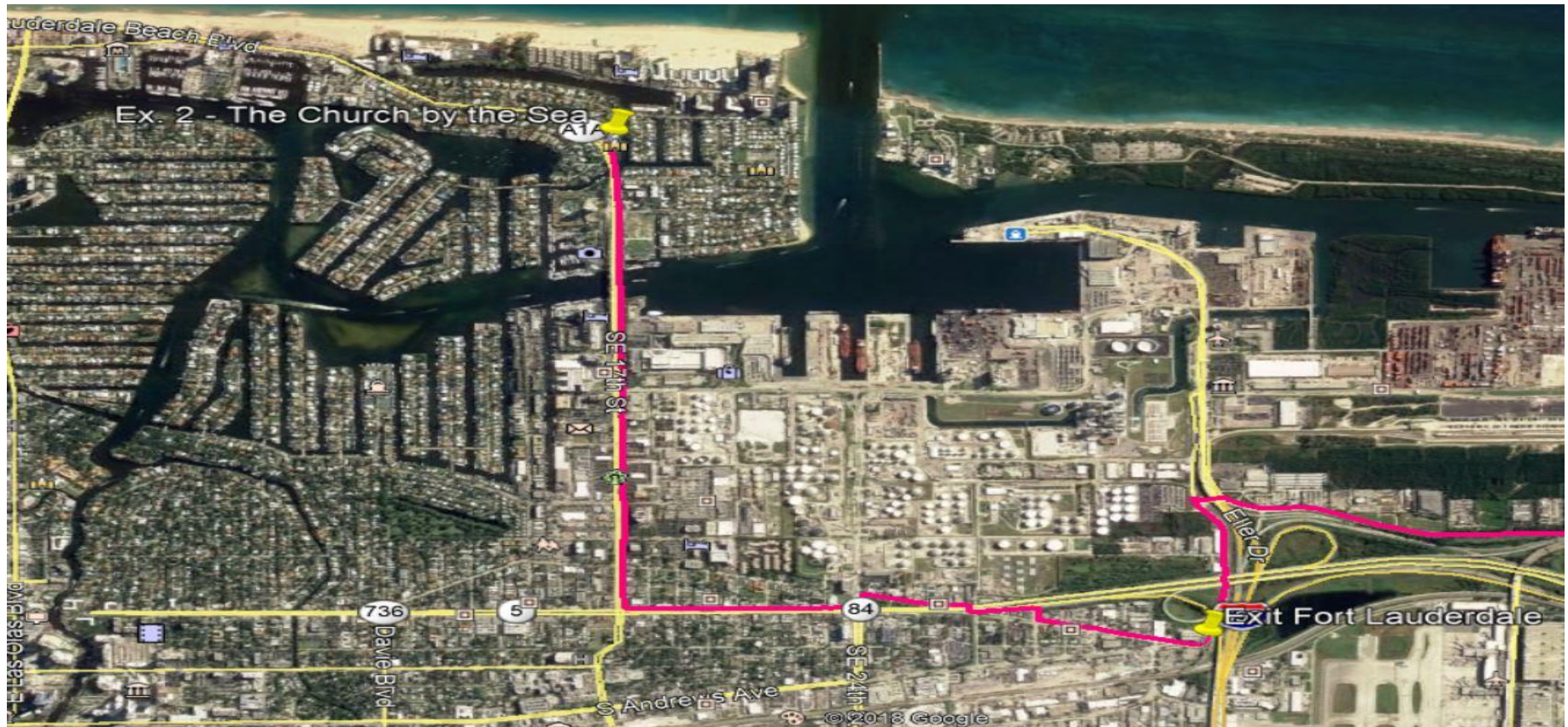
Runners will continue heading South on Galt Ocean Dr. running against traffic on the sidewalk

At the intersection of Galt Ocean Dr. and N Ocean Blvd (A1A) runners will continue on Ocean Blvd (A1A) running against traffic on the sidewalk

At NE 18th St. runners will begin running along the pedestrian path

Runners will remain on the pedestrian path for the remainder of the run

At the intersection of Seabreeze Blvd and Mayan Dr runners will arrive at Exchange 2 (The Church by the Sea)



Leg 3 - Runners will depart Exchange 2 heading East on SE 17th St.

Runners will continue running on the sidewalk long SE 17th St.
 Turn LEFT onto S Federal Hwy running against traffic on the sidewalk
 Turn LEFT onto SE 24th St. running briefly against traffic on the sidewalk
 Turn RIGHT onto Miami Rd. running against traffic on the sidewalk
 Utilize the pedestrian to turn LEFT onto S Federal Hwy running with traffic on the sidewalk
 Turn RIGHT onto SE 30th St. running against traffic on the sidewalk
 Turn LEFT onto SE 6th St. running against traffic on the shoulder
 Runners will depart the City of Fort Lauderdale at the intersection of Andrews St and SE 6th St.