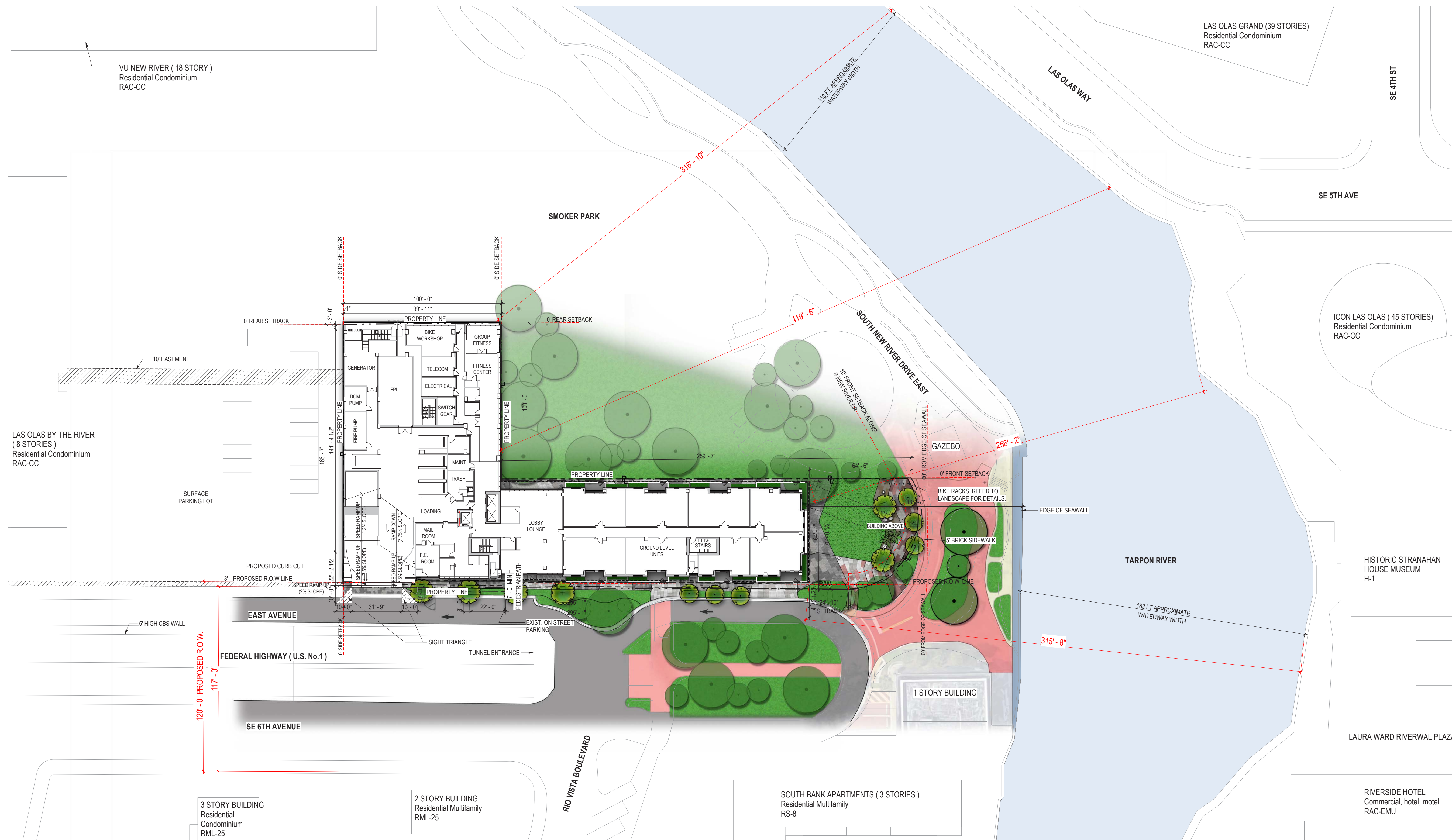


PROJECT SUMMARY

ZONING DISTRICT: RAC-CC (City Center District)
 CHARACTER AREA DESIGNATION: DOWNTOWN CORE
 FUTURE LAND USE: DOWNTOWN REGIONAL ACTIVITY CENTER
 SITE AREA: 34,669 SF or 0.80 Acres (See Survey)
 PROPOSED NUMBER DWELLING UNITS: 180 Units
 PROPOSED PARKING: 229 PARKING SPACES
 NUMBER OF STORIES: 14 STORIES

ALEXAN - TARPON RIVER
 501 SE 6TH AVE, FORT LAUDERDALE, FL 33301



Stantec
 One Biscayne Tower, Suite 1670
 Two South Biscayne Blvd., Miami, FL 33131
 T: 305-482-8700
 www.stantec.com

DRT-APPLICATION
 06.08.2018

GROUND FLOOR PLAN

ALEXAN - TARPON RIVER

501 SE 6TH AVE FORT LAUDERDALE, FL 33301



One Biscayne Tower Suite 1670
 Two South Biscayne Blvd., Miami, FL 33131
 T: 305.482.8700
 www.stantec.com

DRT-APPLICATION
 06.08.2018

ALEXAN - TARPON RIVER
501 SE 6TH AVE FORT LAUDERDALE, FL 33301

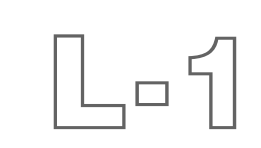
Kimley»Horn
Kimley-Horn & Associates, Inc.
355 Alhambra Circle, Suite 1400
Coral Gables, Florida 33144
T: 305.673.2025

Lic#: A2600733
Jonathan Cardello
Lic#: AR9391

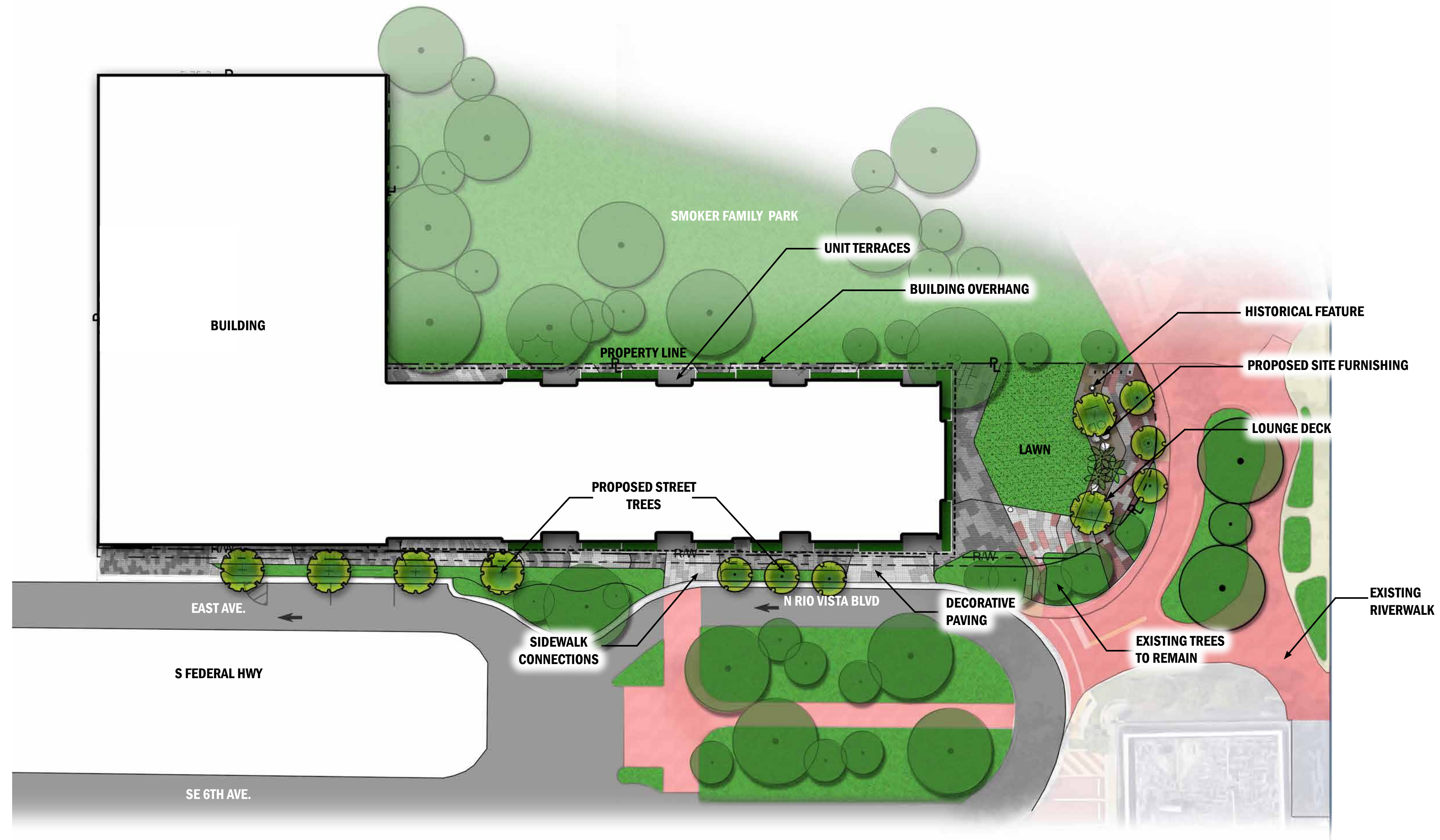
Stantec
One Biscayne Tower Suite 1670
Two South Biscayne Blvd, Miami, FL 33131
T: 305.482.8700
www.stantec.com

DRT
06.08.2018

George Puig, PLA
Florida License
#0001706



- L-1: Cover Sheet**
- L-2: Illustrative Plan Ground Level
- L-3: Uses Diagram - Ground Level
- L-4: Illustrative Plan Amenity Deck
- L-5: Illustrative Plan 14th Level
- L-6: Plant Palette
- L-7: Site Furnishings and Mood Images



ALEXAN - TARPON RIVER
 501 SE 6TH AVE, FORT LAUDERDALE, FL 33301

Kimley»Horn

Kimley-Horn & Associates, Inc.
 355 Alhambra Circle, Suite 1400
 Coral Gables, Florida 33144
 T: 305.673.2025

Stantec

One Biscayne Tower, Suite 1670
 Two South Biscayne Blvd, Miami, FL 33131
 T: 305.482.8700
 www.stantec.com

DRT
 06.08.2018

George Puig, PLA
 Florida License
 #0001706

L-2

USES DIAGRAM - GROUND LEVEL



ALEXAN - TARPON RIVER
501 SE 6TH AVE, FORT LAUDERDALE, FL 33301

Kimley»Horn

Kimley-Horn & Associates, Inc.
355 Alhambra Circle, Suite 1400
Coral Gables, Florida 33144
T: 305.673.2025

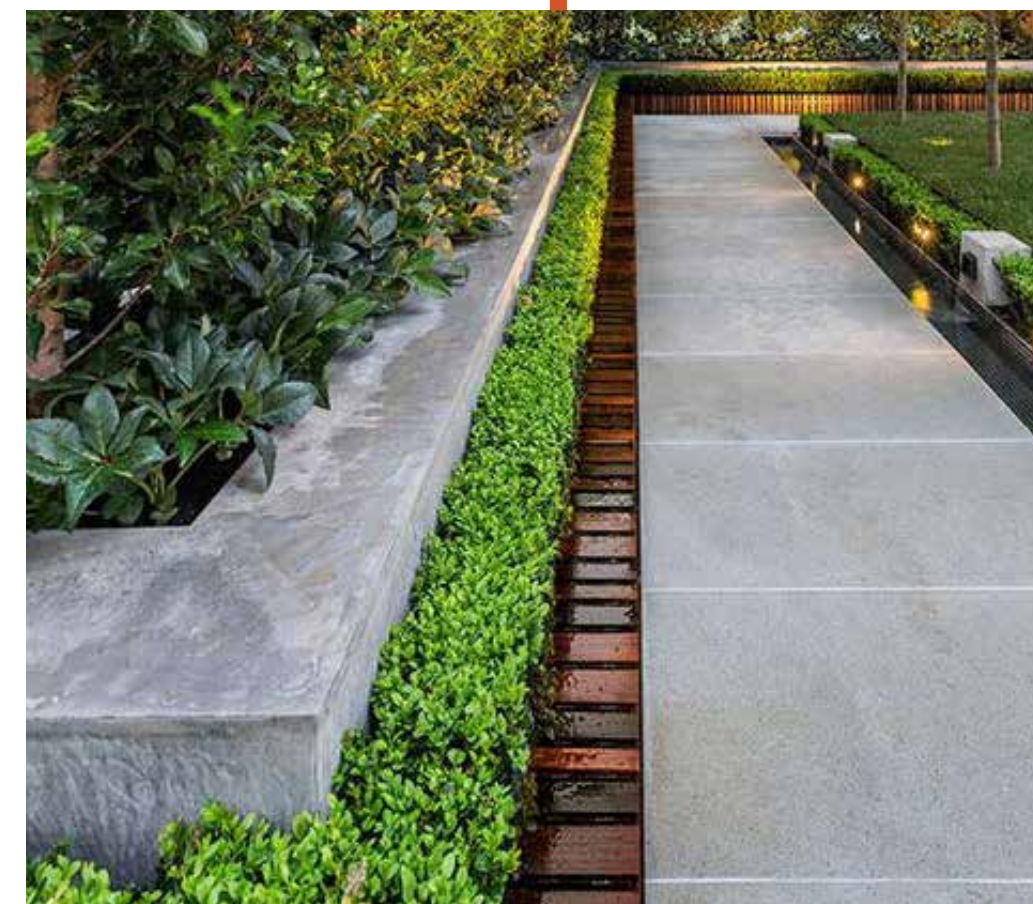
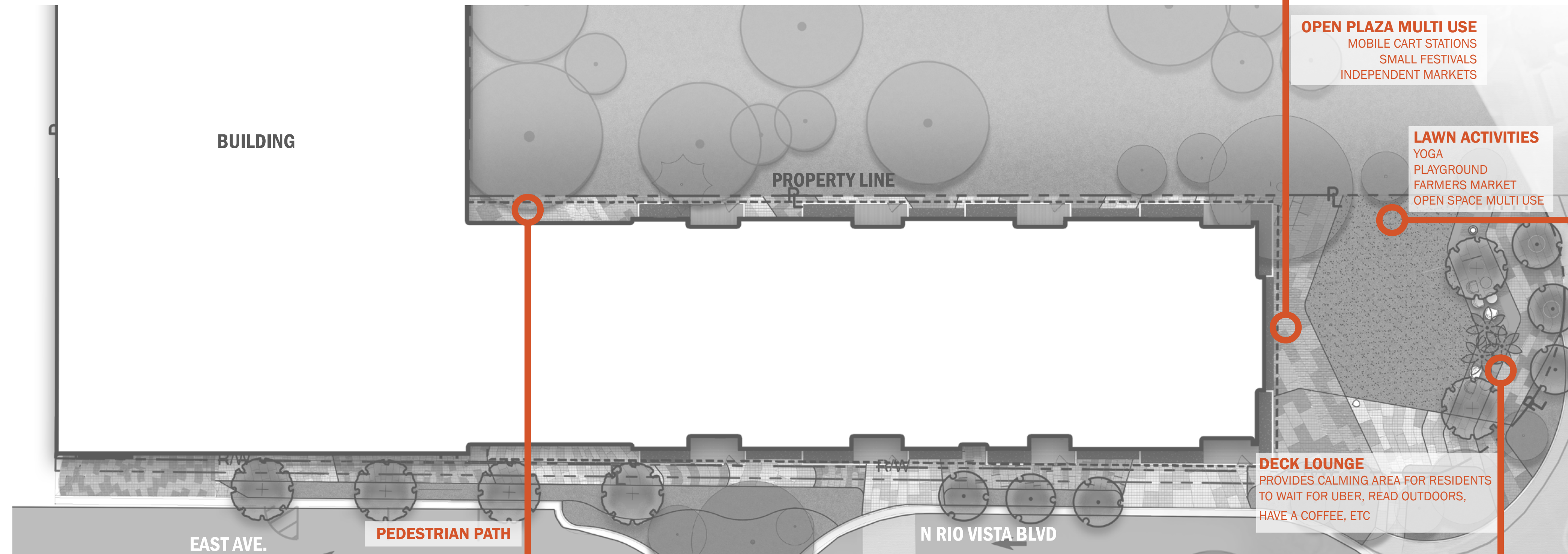
Stantec

One Biscayne Tower, Suite 1670
Two South Biscayne Blvd, Miami, FL 33131
T: 305.482.8700
www.stantec.com

DRT
06.08.2018

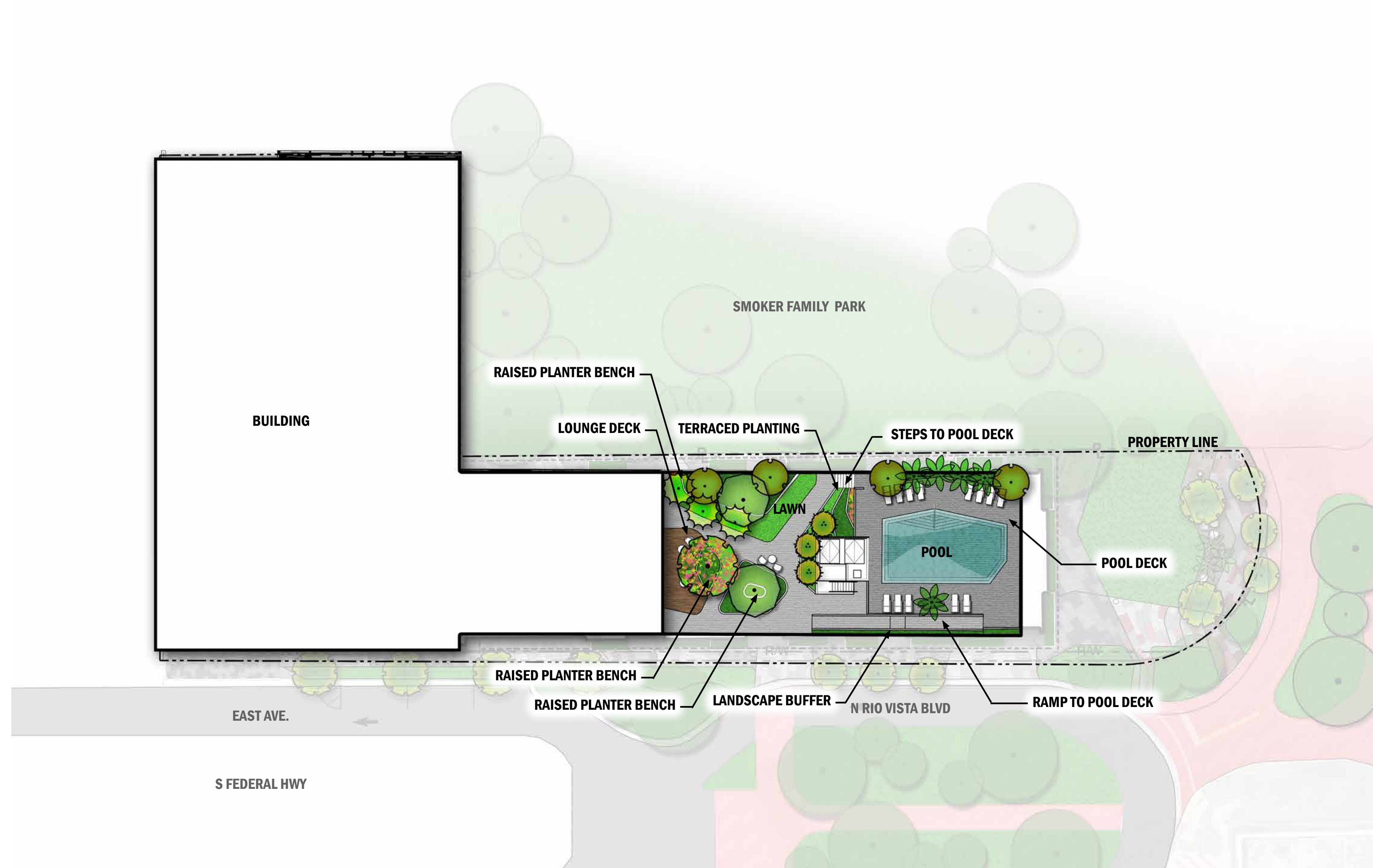
George Puig, PLA
Florida License
#0001706

L-3



GROUND LEVEL- USES DIAGRAM
SCALE: 1"=20'-0"

PROJECT # 219420522



ALEXAN - TARPON RIVER
 501 SE 6TH AVE, FORT LAUDERDALE, FL 33301

Kimley»Horn
 Kimley-Horn & Associates, Inc.
 355 Alhambra Circle, Suite 1400
 Coral Gables, Florida 33144
 T: 305.673.2025

Stantec
 One Biscayne Tower Suite 1670
 Two South Biscayne Blvd, Miami, FL 33131
 T: 305.482.8700
 www.stantec.com

DRT
 06.08.2018

George Puig, PLA
 Florida License
 #0001706

L-4



ALEXAN - TARPON RIVER
501 SE 6TH AVE, FORT LAUDERDALE, FL 33301

Kimley»Horn
Kimley-Horn & Associates, Inc.
355 Alhambra Circle, Suite 1400
Coral Gables, Florida 33144
T: 305.673.2025

Stantec
One Biscayne Tower Suite 1670
Two South Biscayne Blvd, Miami, FL 33131
T: 305.482.8700
www.stantec.com

DRT
06.08.2018

George Puig, PLA
Florida License
#0001706

L-5

PLANT PALETTE



ALEXAN - TARPON RIVER

501 SE 6TH AVE FORT LAUDERDALE, FL 33301

Kimley»Horn

Kimley-Horn & Associates, Inc.
355 Alhambra Circle, Suite 1400
Coral Gables, Florida 33144
T: 305.473.2025

Stantec

One Biscayne Tower Suite 1670
Two South Biscayne Blvd, Miami, FL 33131
T: 305.482.8700
www.stantec.com

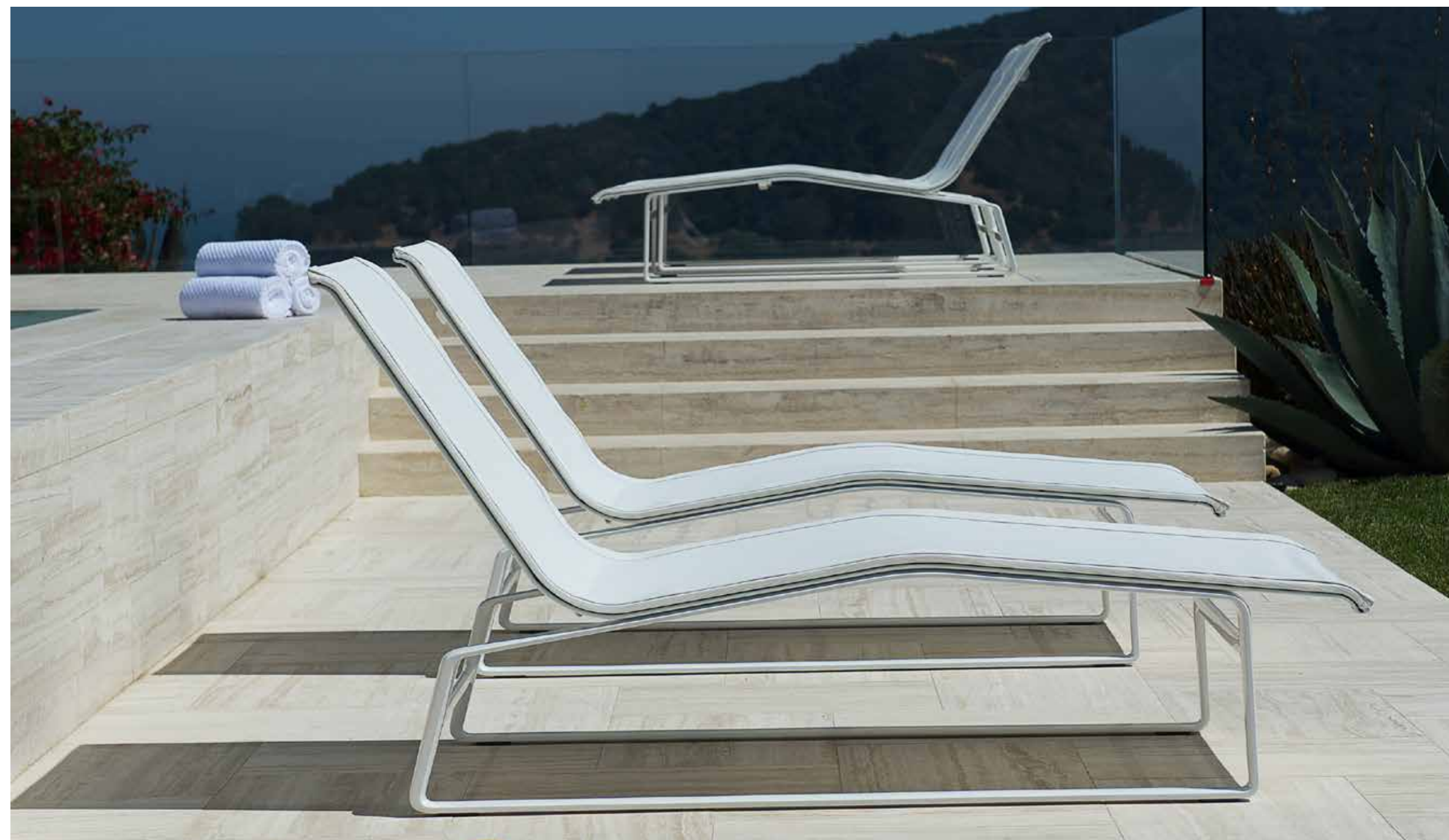
DRT
06.08.2018

George Puig, P.L.A.
Florida License
#0001706

L-6

PROJECT # 219420522

SITE FURNISHING AND MOOD IMAGES



ALEXAN - TARPON RIVER
501 SE 6TH AVE FORT LAUDERDALE, FL 33301

Kimley»Horn
Kimley-Horn & Associates, Inc.
355 Alhambra Circle, Suite 1400
Coral Gables, Florida 33144
T: 305.473.2025

Stantec
One Biscayne Tower Suite 1670
Two South Biscayne Blvd, Miami, FL 33131
T: 305.482.8700
www.stantec.com

DRT
06.08.2018

George Puig, FLA
Florida License
#0001706

