

CERTIFICATION

I certify this to be a true and correct copy of the record of the City of Fort Lauderdale, Florida.
WITNESSETH my hand and official seal of the City of Fort Lauderdale, Florida, this the 25th day of October 2017.
Walter J. Smith City Clerk

RESOLUTION NO. 17-229

A RESOLUTION OF THE CITY COMMISSION OF THE CITY OF FORT LAUDERDALE, FLORIDA, AMENDING RESOLUTION NO. 17-95 TO CORRECT THE SKETCH AND LEGAL MARKED AS EXHIBIT "A" VACATING A UTILITY EASEMENT LOCATED AT 2201 WEST BROWARD BOULEVARD, FORT LAUDERDALE, FLORIDA.

INSTR # 114703488
Recorded 11/03/17 at 03:15 PM
Broward County Commission
10 Page(s)
#4

WHEREAS, pursuant to Resolution No. 17-95, adopted on May 2, 2017, the City Commission of the City of Fort Lauderdale, Florida, vacated a utility easement recorded in Official Records Book 46099, Page 999, of the Public Records of Broward County, Florida, being a portion of Parcel "A", "Riverbend Corporate Park", according to the plat thereof, as recorded in Plat Book 175, Pages 95 through 97 of the Public Records of Broward County, Florida, which was more particularly described on the Sketch and Legal attached as Exhibit "A" to said Resolution No. 17-95; and

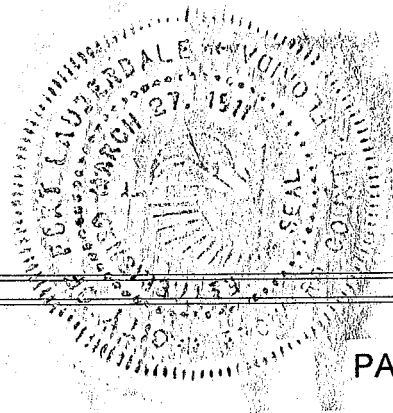
WHEREAS, due to a scrivener's error, the Sketch and Legal comprising Exhibit "A" to Resolution No. 17-95 is inaccurate;

NOW, THEREFORE, BE IT RESOLVED BY THE CITY COMMISSION OF THE CITY OF FORT LAUDERDALE, FLORIDA:

SECTION 1. That Exhibit "A" attached to Resolution No. 17-95 adopted May 2, 2017, is hereby amended to replace same with Exhibit "A" attached hereto.

SECTION 2. That except as amended, Resolution No. 17-95, adopted May 2, 2017, is hereby ratified and reaffirmed.

SECTION 3. That a copy of this Resolution shall be recorded in the Public Records of Broward County, within 30 days from the date of final passage.



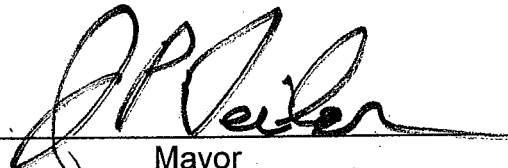
RESOLUTION NO. 17-229

PAGE 2

SECTION 4. That a certified copy of this Resolution shall be sent to the applicant.

SECTION 5. That this Resolution shall take effect immediately upon its adoption.

ADOPTED this the 17th day of October, 2017.



Mayor
JOHN P "JACK" SEILER

ATTEST:



City Clerk
JEFFREY A. MODARELLI

Exhibit A

SKETCH AND LEGAL DESCRIPTION

BY

PULICE LAND SURVEYORS, INC.

5381 NOB HILL ROAD
SUNRISE, FLORIDA 33351

TELEPHONE: (954) 572-1777 • FAX: (954) 572-1778

E-MAIL: surveys@puliceandsurveyors.com CERTIFICATE OF AUTHORIZATION EB43870

LEGAL DESCRIPTION:

ALL OF THAT WATER AND SEWER UTILITY EASEMENT RECORDED IN OFFICIAL RECORDS BOOK 46099, PAGE 999, OF THE PUBLIC RECORDS OF BROWARD COUNTY, FLORIDA BEING A PORTION OF PARCEL "A", "RIVERBEND CORPORATE PARK", ACCORDING TO THE PLAT THEREOF, AS RECORDED IN PLAT BOOK 175, PAGES 95 THROUGH 97 OF THE PUBLIC RECORDS OF BROWARD COUNTY, FLORIDA, BEING MORE PARTICULARLY DESCRIBED AS FOLLOWS:

COMMENCING AT THE NORTHWEST CORNER OF SAID PARCEL "A"; THENCE SOUTH 89°59'58" EAST ALONG THE NORTH LINE OF SAID PARCEL "A", A DISTANCE OF 249.21 FEET; THENCE SOUTH 00°00'02" WEST, A DISTANCE OF 126.91 FEET TO THE POINT OF BEGINNING, SAID POINT ALSO BEING ON THE WEST LINE OF SAID PARCEL "A"; THENCE NORTH 90°00'00" EAST, A DISTANCE OF 8.09 FEET; THENCE NORTH 00°00'00" WEST, A DISTANCE OF 9.15 FEET; THENCE NORTH 90°00'00" EAST, A DISTANCE OF 20.24 FEET; THENCE SOUTH 00°00'00" WEST, A DISTANCE OF 9.15 FEET; THENCE NORTH 90°00'00" EAST, A DISTANCE OF 27.45 FEET; THENCE SOUTH 00°00'00" EAST, A DISTANCE OF 35.61 FEET; THENCE NORTH 90°00'00" EAST, A DISTANCE OF 133.64 FEET; THENCE NORTH 00°00'00" EAST, A DISTANCE OF 14.24 FEET; THENCE SOUTH 90°00'00" EAST, A DISTANCE OF 10.00 FEET; THENCE SOUTH 00°00'00" WEST, A DISTANCE OF 14.24 FEET; THENCE SOUTH 90°00'00" EAST, A DISTANCE OF 28.32 FEET; THENCE NORTH 00°00'00" EAST, A DISTANCE OF 10.72 FEET; THENCE SOUTH 90°00'00" EAST, A DISTANCE OF 10.00 FEET; THENCE SOUTH 00°00'00" WEST, A DISTANCE OF 10.72 FEET; THENCE SOUTH 90°00'00" EAST, A DISTANCE OF 244.36 FEET; THENCE NORTH 00°00'00" EAST, A DISTANCE OF 10.72 FEET; THENCE SOUTH 90°00'00" EAST, A DISTANCE OF 10.00 FEET; THENCE SOUTH 00°00'00" WEST, A DISTANCE OF 10.72 FEET; THENCE SOUTH 90°00'00" EAST, A DISTANCE OF 34.15 FEET; THENCE NORTH 00°00'00" EAST, A DISTANCE OF 11.72 FEET; THENCE SOUTH 90°00'00" EAST, A DISTANCE OF 10.00 FEET; THENCE SOUTH 00°00'00" WEST, A DISTANCE OF 11.72 FEET; THENCE SOUTH 90°00'00" EAST, A DISTANCE OF 344.39 FEET TO A POINT ON THE EAST LINE OF THE AFORESAID PARCEL "A" ALSO BEING THE WEST RIGHT-OF-WAY LINE OF NW 22ND AVENUE AS SHOWN ON SAID PLAT; THENCE SOUTH 00°20'32" WEST ALONG THE EAST LINE OF SAID PARCEL "A", A DISTANCE OF 245.39 FEET TO A POINT ON THE ARC OF A CIRCULAR CURVE CONCAVE TO THE SOUTHEAST AND TO SAID POINT A RADIAL LINE BEARS NORTH 19°14'51" WEST; THENCE SOUTHWESTERLY ALONG SAID CIRCULAR CURVE HAVING A RADIUS OF 73.45 FEET AND A CENTRAL ANGLE OF 19°57'16", AN ARC LENGTH OF 25.58 FEET TO A POINT ON THE ARC OF A CIRCULAR CURVE CONCAVE TO THE NORTHWEST AND TO SAID POINT A RADIAL LINE BEARS SOUTH 39°15'50" EAST; THENCE SOUTHWESTERLY ALONG SAID CIRCULAR CURVE HAVING A RADIUS OF 703.00 FEET AND A CENTRAL ANGLE OF 10°26'35", AN ARC LENGTH OF 128.13 FEET; THENCE SOUTH 31°39'45" EAST, A DISTANCE OF 14.60 FEET; THENCE SOUTH 58°20'15" WEST, A DISTANCE OF 10.00 FEET; THENCE NORTH 31°39'45" WEST, A DISTANCE OF 15.17 FEET TO A POINT ON THE ARC OF A CIRCULAR CURVE CONCAVE TO THE NORTHWEST AND TO SAID POINT A RADIAL LINE BEARS SOUTH 28°00'16"

CONTINUED ON SHEET 2 OF 8

FILE: BRIDGE DEVELOPMENT PARTNERS LLC

SCALE: N/A

DRAWN BY: B.B.

ORDER NO.: 62384

DATE: 01/17/17, REV. 2/3/17, 3/14/17

WATER AND SEWER EASEMENT TO BE ABANDONED

FORT LAUDERDALE, BROWARD COUNTY, FLORIDA

FOR: RIVERBEND CORPORATE CENTER

SHEET 1 OF 8

THIS DOCUMENT IS NEITHER FULL NOR COMPLETE
WITHOUT SHEETS 1 THRU 8, INCLUSIVE

Beth Burns

☐ JOHN F. PULICE, PROFESSIONAL SURVEYOR AND MAPPER LS2691
☒ BETH BURNS, PROFESSIONAL SURVEYOR AND MAPPER LS6136
STATE OF FLORIDA



SKETCH AND LEGAL DESCRIPTION

BY
PULICE LAND SURVEYORS, INC.5381 NOB HILL ROAD
SUNRISE, FLORIDA 33351

TELEPHONE: (954) 572-1777 • FAX: (954) 572-1778

E-MAIL: surveys@pulicelandsurveyors.com CERTIFICATE OF AUTHORIZATION LB43870



CONTINUED FROM SHEET 1 OF 8

EAST, THENCE SOUTHWESTERLY ALONG SAID CIRCULAR CURVE HAVING A RADIUS OF 703.00 FEET AND A CENTRAL ANGLE OF 15°36'39", AN ARC LENGTH OF 191.54 FEET; THENCE SOUTH 14°58'39" EAST, A DISTANCE OF 14.30 FEET; THENCE SOUTH 75°01'21" WEST, A DISTANCE OF 10.00 FEET; THENCE NORTH 14°58'39" WEST, A DISTANCE OF 14.83 FEET TO A POINT ON THE ARC OF A CIRCULAR CURVE TO THE NORTHWEST AND TO SAID POINT A RADIAL LINE BEARS 11°34'39" EAST; THENCE SOUTHWESTERLY ALONG SAID CIRCULAR CURVE HAVING A RADIUS OF 703.00 FEET AND A CENTRAL ANGLE OF 4°13'05", AN ARC LENGTH OF 51.75 FEET; THENCE SOUTH 00°00'00" WEST, A DISTANCE OF 24.72 FEET; THENCE NORTH 90°00'00" WEST, A DISTANCE OF 14.95 FEET; THENCE NORTH 00°00'00" EAST, A DISTANCE OF 22.95 FEET TO A POINT ON THE ARC OF A CIRCULAR CURVE CONCAVE TO THE NORTH AND TO SAID POINT A RADIAL LINE BEARS SOUTH 06°07'57" EAST; THENCE WESTERLY ALONG SAID CIRCULAR CURVE HAVING A RADIUS OF 703.00 FEET AND A CENTRAL ANGLE OF 6°07'57", AN ARC LENGTH OF 75.24 FEET; THENCE NORTH 90°00'00" WEST, A DISTANCE OF 100.96 FEET TO THE POINT OF CURVATURE OF A CIRCULAR CURVE CONCAVE TO THE NORTH; THENCE WESTERLY ALONG SAID CIRCULAR CURVE HAVING A RADIUS OF 703.00 FEET AND A CENTRAL ANGLE OF 8°11'58", AN ARC LENGTH OF 100.61 FEET; THENCE SOUTH 00°00'00" WEST, A DISTANCE OF 17.36 FEET; THENCE NORTH 90°00'00" WEST, A DISTANCE OF 19.83 FEET; THENCE NORTH 00°00'00" EAST, A DISTANCE OF 20.50 FEET TO A POINT ON THE ARC OF A CIRCULAR CURVE CONCAVE TO THE NORTHEAST AND TO SAID POINT A RADIAL LINE BEARS SOUTH 09°50'09" WEST; THENCE NORTHWESTERLY ALONG SAID CIRCULAR CURVE HAVING A RADIUS OF 703.00 FEET AND A CENTRAL ANGLE OF 11°17'57", AN ARC LENGTH OF 138.64 FEET; THENCE NORTH 00°20'32" EAST, A DISTANCE OF 42.97 FEET TO A POINT ON THE ARC OF A CIRCULAR CURVE CONCAVE TO THE NORTHEAST AND TO SAID POINT A RADIAL LINE BEARS SOUTH 22°26'49" WEST; THENCE SOUTHEASTERLY ALONG SAID CIRCULAR CURVE HAVING A RADIUS OF 663.00 FEET AND A CENTRAL ANGLE OF 22°27'13", AN ARC LENGTH OF 259.82 FEET; THENCE SOUTH 90°00'00" EAST, A DISTANCE OF 35.35 FEET; THENCE NORTH 00°00'00" WEST, A DISTANCE OF 285.36 FEET; THENCE NORTH 30°16'34" WEST, A DISTANCE OF 82.39 FEET; THENCE NORTH 90°00'00" WEST, A DISTANCE OF 77.02 FEET; THENCE SOUTH 00°00'00" WEST, A DISTANCE OF 15.06 FEET; THENCE NORTH 90°00'00" WEST, A DISTANCE OF 10.00 FEET; THENCE NORTH 00°00'00" EAST, A DISTANCE OF 15.06 FEET; THENCE NORTH 90°00'00" WEST, A DISTANCE OF 185.71 FEET TO A POINT ON THE ARC OF A CIRCULAR CURVE CONCAVE TO THE SOUTHWEST AND TO SAID POINT A RADIAL LINE BEARS NORTH 65°56'07" EAST, SAID POINT ALSO BEING ON THE WEST LINE OF THE AFORESAID PARCEL "A"; THENCE NORTHWESTERLY ALONG SAID CIRCULAR CURVE HAVING A RADIUS OF 308.15 FEET AND A CENTRAL ANGLE OF 11°57'58", AN ARC LENGTH OF 64.36 FEET TO THE POINT OF BEGINNING, WITH THE LAST CALL BEING COINCIDENT WITH WEST LINE OF SAID PARCEL "A".

LESS AND EXCEPT THEREFROM:

CONTINUED ON SHEET 3 OF 8

FILE: BRIDGE DEVELOPMENT PARTNERS LLC

SCALE: N/A

DRAWN BY: B.B.

ORDER NO.: 62384

DATE: 01/17/17, REV. 2/3/17, 3/14/17

WATER AND SEWER EASEMENT TO BE ABANDONED

FORT LAUDERDALE, BROWARD COUNTY, FLORIDA

FOR: RIVERBEND CORPORATE CENTER

SHEET 2 OF 8

THIS DOCUMENT IS NEITHER FULL NOR COMPLETE
WITHOUT SHEETS 1 THRU 8, INCLUSIVE



PLS

SKETCH AND LEGAL DESCRIPTION
BY
PULICE LAND SURVEYORS, INC.

5381 NOB HILL ROAD
SUNRISE, FLORIDA 33351

TELEPHONE: (954) 572-1777 • FAX: (954) 572-1787

E-MAIL: surveys@pulicelandsurveyors.com CERTIFICATE OF AUTHORIZATION LB#3870



PLS

CONTINUED FROM SHEET 2 OF 8

A PORTION OF LAND LYING IN PARCEL "A", "RIVERBEND CORPORATE PARK", ACCORDING TO THE PLAT THEREOF, AS RECORDED IN PLAT BOOK 175, PAGES 95 THROUGH 97 OF THE PUBLIC RECORDS OF BROWARD COUNTY, FLORIDA, BEING MORE PARTICULARLY DESCRIBED AS FOLLOWS:

COMMENCING AT THE NORTHWEST CORNER OF SAID PARCEL "A"; THENCE SOUTH 89°59'58" EAST ALONG THE NORTH LINE OF SAID PARCEL "A", A DISTANCE OF 568.01 FEET; THENCE SOUTH 00°00'02" WEST, A DISTANCE OF 182.51 FEET TO THE POINT OF BEGINNING; THENCE SOUTH 30°16'34" EAST, A DISTANCE OF 78.63 FEET; THENCE SOUTH 00°00'00" EAST, A DISTANCE OF 288.61 FEET; THENCE SOUTH 90°00'00" EAST, A DISTANCE OF 53.60 FEET TO THE POINT OF CURVATURE ON A CIRCULAR CURVE CONCAVE TO THE NORTH; THENCE EASTERLY ALONG SAID CIRCULAR CURVE HAVING A RADIUS OF 663.00 FEET AND A CENTRAL ANGLE OF 39°41'40", AN ARC LENGTH OF 459.32 FEET; THENCE NORTH 00°20'32" EAST, A DISTANCE OF 203.68 FEET; THENCE NORTH 90°00'00" WEST, A DISTANCE OF 78.45 FEET; THENCE SOUTH 00°00'00" WEST, A DISTANCE OF 10.57 FEET; THENCE NORTH 90°00'00" WEST, A DISTANCE OF 11.00 FEET; THENCE NORTH 00°00'00" EAST, A DISTANCE OF 10.57 FEET; THENCE NORTH 90°00'00" WEST, A DISTANCE OF 244.44 FEET; THENCE SOUTH 00°00'00" WEST, A DISTANCE OF 13.84 FEET; THENCE NORTH 90°00'00" WEST, A DISTANCE OF 10.00 FEET; THENCE NORTH 90°00'00" EAST, A DISTANCE OF 13.84 FEET; THENCE NORTH 90°00'00" WEST, A DISTANCE OF 174.02 FEET TO THE POINT OF BEGINNING.

SAID LANDS SITUATE, LYING AND BEING IN THE CITY OF FORT LAUDERDALE, BROWARD COUNTY, FLORIDA CONTAINING 219,110 SQUARE FEET (5.0301 ACRES), MORE OR LESS.

NOTES:

- 1) BEARINGS ARE BASED ON THE NORTH LINE OF PARCEL "A", "RIVERBEND CORPORATE CENTER" BEING S89°59'58"E.
- 2) THIS IS NOT A SKETCH OF SURVEY AND DOES NOT REPRESENT A FIELD SURVEY.
- 3) THIS SKETCH IS NOT VALID WITHOUT THE SIGNATURE AND ORIGINAL RAISED SEAL OF A FLORIDA LICENSED SURVEYOR AND MAPPER.
- 4) ALL OF THE EASEMENTS AND PLATS SHOWN HEREON ARE RECORDED IN THE PUBLIC RECORDS OF BROWARD COUNTY, FLORIDA.

FILE: BRIDGE DEVELOPMENT PARTNERS LLC

SCALE: N/A

DRAWN BY: B.B.

ORDER NO.: 62384

DATE: 01/17/17, REV. 2/3/17, 3/14/17

WATER AND SEWER EASEMENT TO BE ABANDONED

FORT LAUDERDALE, BROWARD COUNTY, FLORIDA

FOR: RIVERBEND CORPORATE CENTER

SHEET 3 OF 8

THIS DOCUMENT IS NEITHER FULL NOR COMPLETE
WITHOUT SHEETS 1 THRU 8, INCLUSIVE

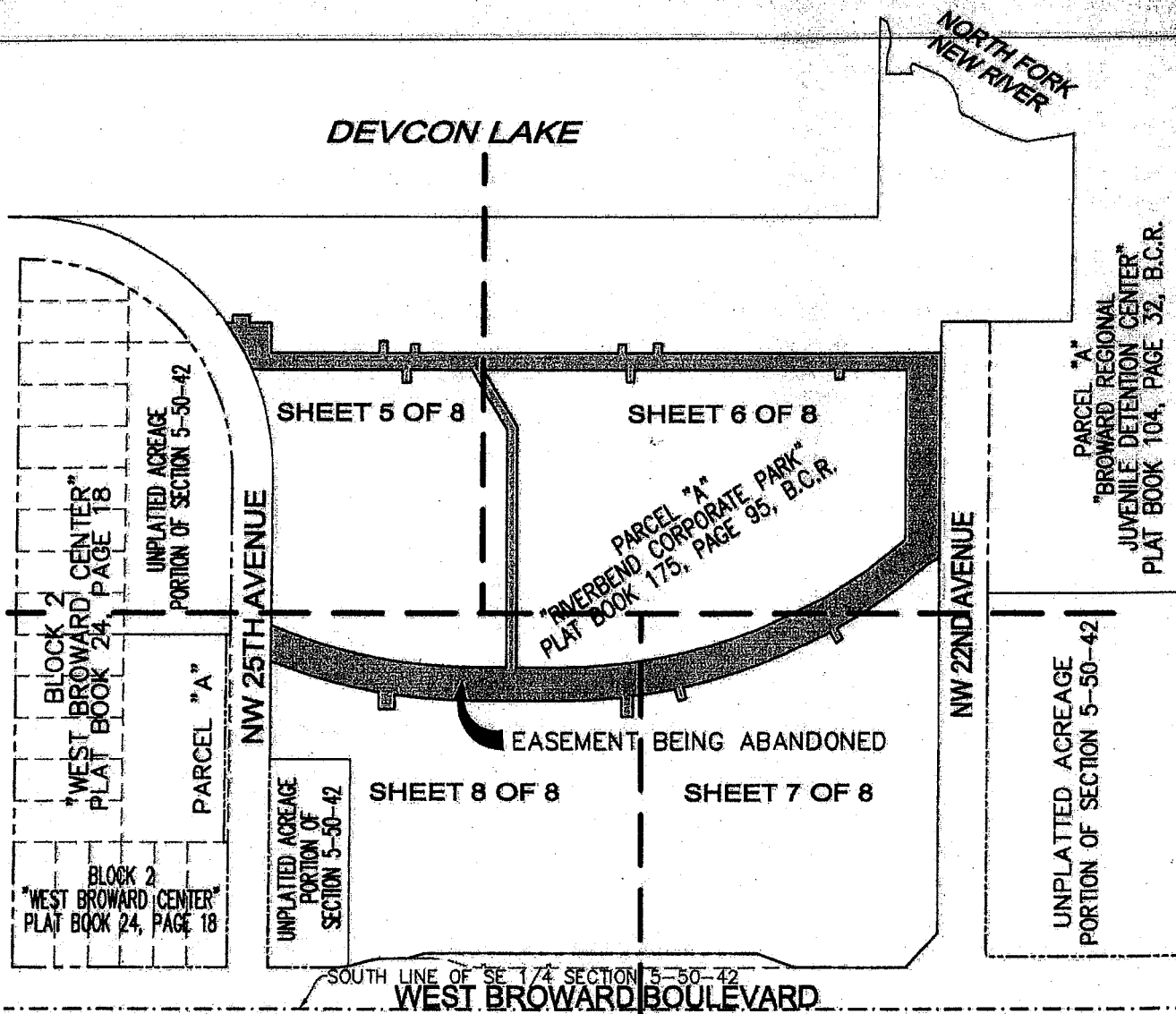


SKETCH AND LEGAL DESCRIPTION
BY
PULICE LAND SURVEYORS, INC.

5381 NOB HILL ROAD
SUNRISE, FLORIDA 33351

TELEPHONE: (954) 572-1777 • FAX: (954) 572-1778

E-MAIL: surveys@pulicelandsurveyors.com CERTIFICATE OF AUTHORIZATION LB#3870



VICINITY MAP

FILE: BRIDGE DEVELOPMENT PARTNERS LLC

SCALE: 1"=200'

DRAWN BY: B.B.

ORDER NO.: 62384

DATE: 01/17/17, REV. 2/3/17, 3/14/17

WATER AND SEWER EASEMENT TO BE ABANDONED

FORT LAUDERDALE, BROWARD COUNTY, FLORIDA

FOR: RIVERBEND CORPORATE CENTER

SHEET 4 OF 8

THIS DOCUMENT IS NEITHER FULL NOR COMPLETE
WITHOUT SHEETS 1 THRU 8, INCLUSIVE

LEGEND:

B.C.R.

BROWARD COUNTY RECORDS

PLS

SKETCH AND LEGAL DESCRIPTION

BY

PULICE LAND SURVEYORS, INC.

5381 NOB HILL ROAD

SUNRISE, FLORIDA 33351

TELEPHONE: (954) 572-1777 FAX: (954) 572-1778

E-MAIL: surveys@pulicelandsurveyors.com CERTIFICATE OF AUTHORIZATION LB#3870

PLS

POINT OF COMMENCEMENT
NW CORNER PARCEL "A"
"RIVERBEND CORPORATE PARK"

DEVCON LAKE

S89°59'58"E 249.21'

S89°59'58"E 568.01'

NORTH LINE PARCEL "A"

NW 25TH AVENUE

POINT OF BEGINNING

PARCEL "A"
"RIVERBEND CORPORATE PARK"
PLAT BOOK 175, PAGE 95, B.C.R.WATER AND SEWER UTILITY EASEMENT
O.R.B. 46099, PAGE 999, B.C.R.

N90°00'00"E 8.09'

S00°00'00"W 126.91'

N00°00'00"W 9.15'

N00°00'00"E 20.24'

N90°00'00"W 9.15'

S00°00'00"E 27.45'

N90°00'00"E 35.61'

N90°00'00"E 133.64'

N90°00'00"W 185.71'

N00°00'00"E 14.24'

S00°00'00"W 10.72'

N00°00'00"E 10.72'

S90°00'00"E 10.00'

S90°00'00"E 10.244.36'(TOTAL)

S90°00'00"E 10.00'

S90°00'00"E 10.00'

S90°00'00"E 10.00'

S90°00'00"E 10.00'

N90°00'00"W 77.02'

N90°00'00"W 10.00'

N90°00'00"W 10.00'

N90°00'00"W 10.00'

N90°00'00"W 10.00'

N90°00'00"W 10.00'

N90°00'00"W 10.00'

N30°16'34"W
82.39'(TOTAL)PARCEL "A"
"RIVERBEND CORPORATE PARK"
PLAT BOOK 175, PAGE 95, B.C.R.

MATCH LINE A SEE SHEET 6 OF 8

MATCH LINE B SEE SHEET 8 OF 8

FILE: BRIDGE DEVELOPMENT PARTNERS LLC

SCALE: 1"=100'

DRAWN BY: B.B.

ORDER NO.: 62384

DATE: 01/17/17, REV. 2/3/17, 3/14/17

WATER AND SEWER EASEMENT TO BE ABANDONED

FORT LAUDERDALE, BROWARD COUNTY, FLORIDA

FOR: RIVERBEND CORPORATE CENTER

SHEET 5 OF 8

THIS DOCUMENT IS NEITHER FULL NOR COMPLETE
WITHOUT SHEETS 1 THRU 8, INCLUSIVE

LEGEND:

O.R.B.	OFFICIAL RECORDS BOOK
R	RADIUS
CA	CENTRAL ANGLE
A	ARC DISTANCE
B.C.R.	BROWARD COUNTY RECORDS
---	NON-VEHICULAR ACCESS LINE



SKETCH AND LEGAL DESCRIPTION
BY
PULICE LAND SURVEYORS, INC.

5381 NOB HILL ROAD
SUNRISE, FLORIDA 33351

TELEPHONE: (954) 572-1777 • FAX: (954) 572-1778

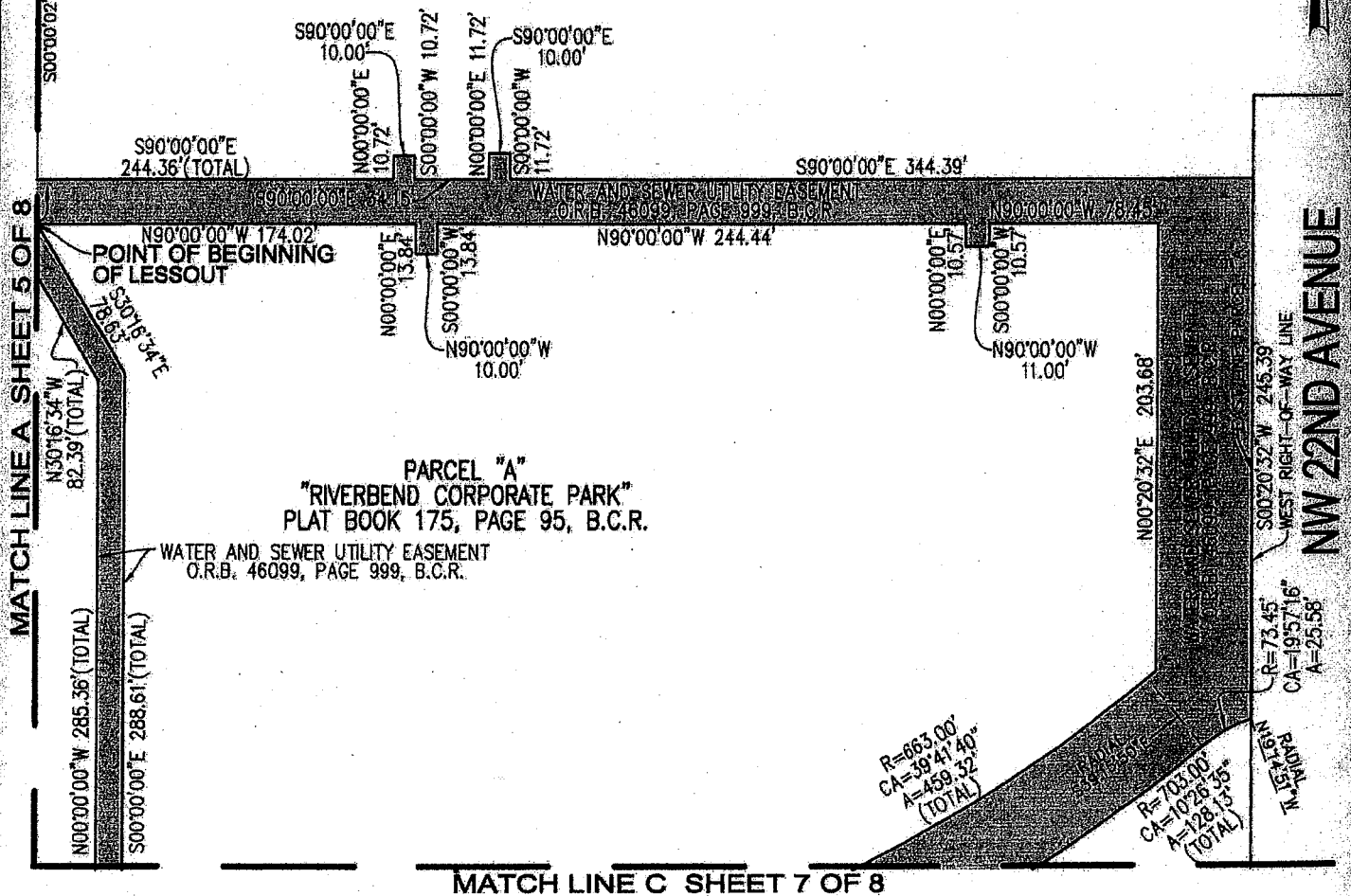
E-MAIL: surveys@pulicelandsurveyors.com CERTIFICATE OF AUTHORIZATION LB#3870



DEVCON LAKE

NORTH LINE PARCEL "A"

PARCEL "A"
"RIVERBEND CORPORATE PARK"
PLAT BOOK 175, PAGE 95, B.C.R.



FILE: BRIDGE DEVELOPMENT PARTNERS LLC

SCALE: 1"=100'

DRAWN BY: B.B.

ORDER NO.: 62384, REV. 2/3/17, 3/14/17

DATE: 01/17/17

WATER AND SEWER EASEMENT TO BE ABANDONED

FORT LAUDERDALE, BROWARD COUNTY, FLORIDA

FOR: RIVERBEND CORPORATE CENTER

SHEET 6 OF 8

THIS DOCUMENT IS NEITHER FULL NOR COMPLETE
WITHOUT SHEETS 1 THRU 8, INCLUSIVE.

LEGEND:

O.R.B. OFFICIAL RECORDS BOOK
R RADIUS
CA CENTRAL ANGLE
A ARC DISTANCE
P.B. PLAT BOOK
B.C.R. BROWARD COUNTY RECORDS

PLS



SKETCH AND LEGAL DESCRIPTION

BY

PULICE LAND SURVEYORS, INC.

5381 NOB HILL ROAD
SUNRISE, FLORIDA 33351

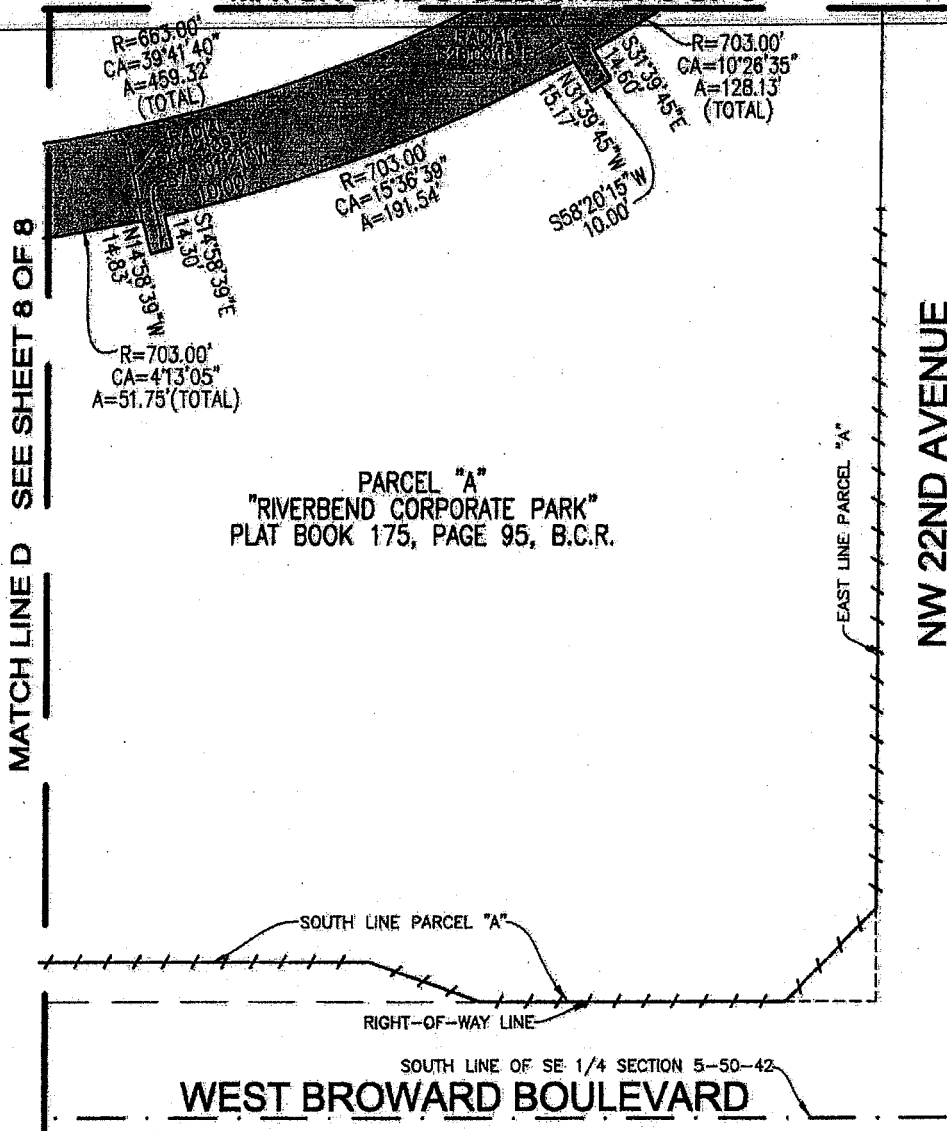
TELEPHONE: (954) 572-1777 • FAX: (954) 572-1778

E-MAIL: surveys@puliceandsurveyors.com CERTIFICATE OF AUTHORIZATION LB#3870

PLS



MATCH LINE C SEE SHEET 6 OF 8



FILE: BRIDGE DEVELOPMENT PARTNERS LLC

SCALE: 1"=100'

DRAWN BY: B.B.

ORDER NO.: 62384

DATE: 01/17/17, REV. 2/3/17, 3/14/17

WATER AND SEWER EASEMENT TO BE ABANDONED

FORT LAUDERDALE, BROWARD COUNTY, FLORIDA

FOR: RIVERBEND CORPORATE CENTER

SHEET 7 OF 8

THIS DOCUMENT IS NEITHER FULL NOR COMPLETE
WITHOUT SHEETS 1 THRU 8, INCLUSIVE

LEGEND:

O.R.B. OFFICIAL RECORDS BOOK
R RADIUS
CA CENTRAL ANGLE
A ARC DISTANCE
P.B. PLAT BOOK
B.C.R. BROWARD COUNTY RECORDS
—/—/— NON-VEHICULAR ACCESS LINE

PLS

SKETCH AND LEGAL DESCRIPTION BY PULICE LAND SURVEYORS, INC.

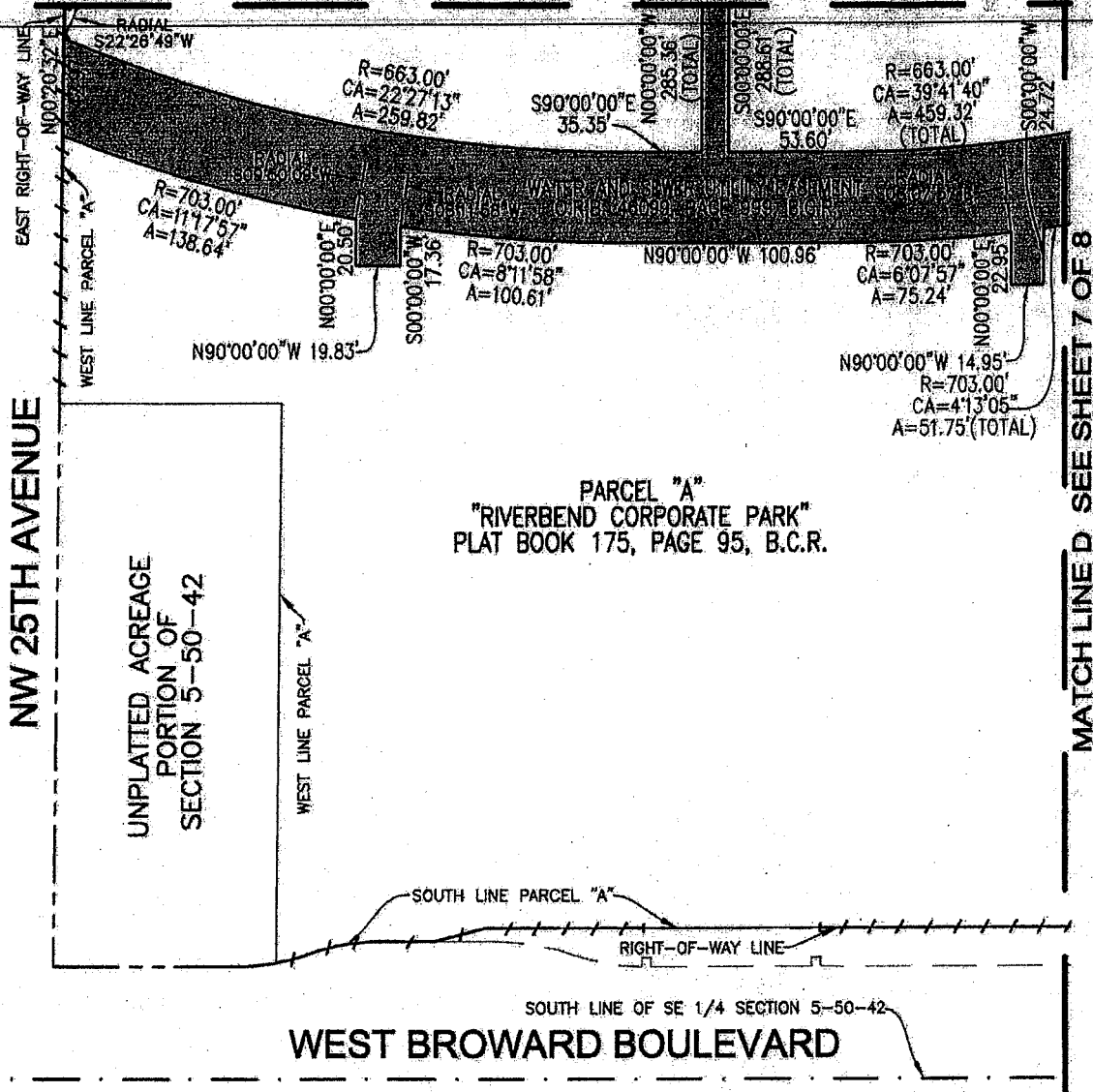
5381 NOB HILL ROAD
SUNRISE, FLORIDA 33351

TELEPHONE: (954) 572-1777 • FAX: (954) 572-1778

E-MAIL: surveys@pulicelandsurveyors.com CERTIFICATE OF AUTHORIZATION LB#3870

PLS

MATCH LINE B SEE SHEET 6 OF 8



MATCH LINE D SEE SHEET 7 OF 8

FILE: BRIDGE DEVELOPMENT PARTNERS LLC

SCALE: 1"=100' DRAWN BY: B.B.

ORDER NO.: 62384

DATE: 01/17/17, REV. 2/3/17, 3/14/17

WATER AND SEWER EASEMENT TO BE ABANDONED

FORT LAUDERDALE, BROWARD COUNTY, FLORIDA

FOR: RIVERBEND CORPORATE CENTER

SHEET 8 OF 8

THIS DOCUMENT IS NEITHER FULL NOR COMPLETE
WITHOUT SHEETS 1 THRU 8, INCLUSIVE

LEGEND:

O.R.B. OFFICIAL RECORDS BOOK
R RADIUS
CA CENTRAL ANGLE
A ARC DISTANCE
P.B. PLAT BOOK
B.C.R. BROWARD COUNTY RECORDS
- - - NON-VEHICULAR ACCESS LINE