

# Beverly Heights Residential Parking Permit Study



# Residential Parking Permit Survey

- TAM, in coordination with the Strategic Communication Office, surveyed the Beverly Heights neighborhood with regards to a residential parking permit program.
- Surveys were mailed in June 2017 with an end date of July 7th, 2017.
- TAM received responses from the on-line survey with 29 out of 50 responses approving the residential parking permit program



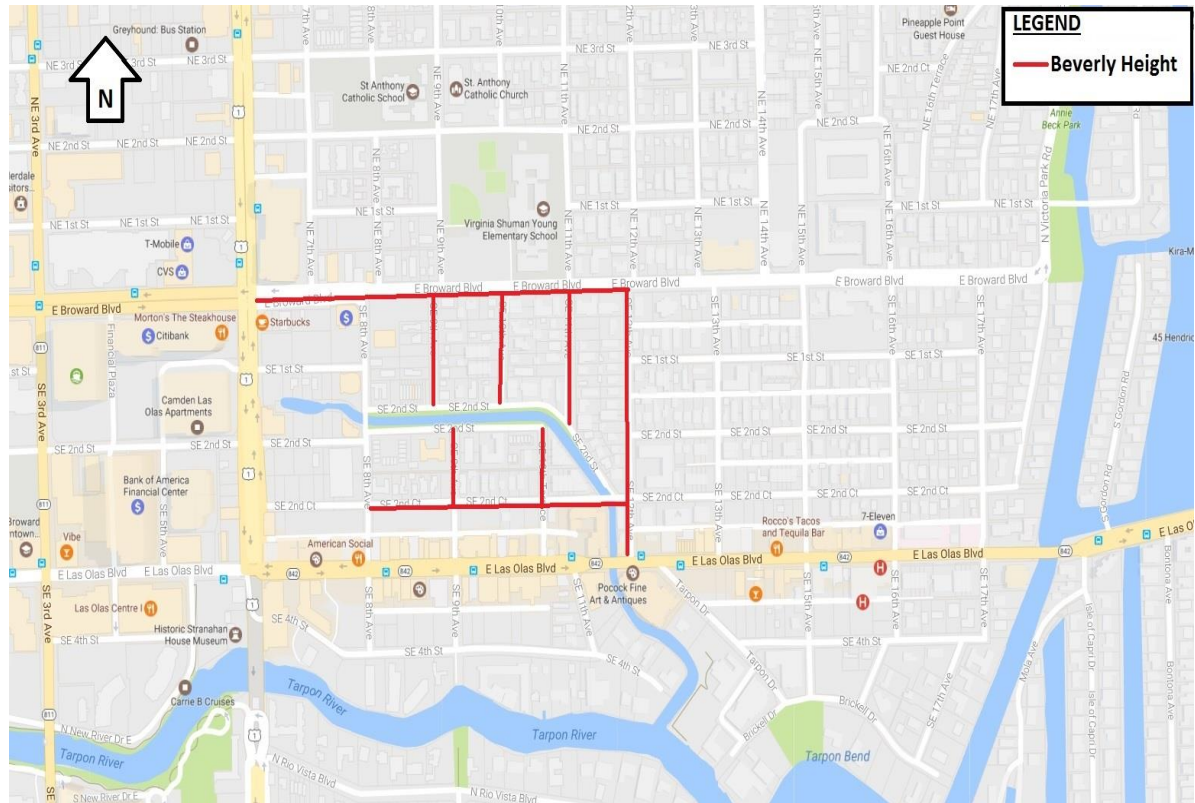
# Parking Study – Beverly Heights

- A Parking Study was conducted from Saturday May 19<sup>th</sup> to Friday, June 2<sup>nd</sup>.
- The study area was from S. Federal Highway to NE 12<sup>th</sup> Avenue and From E. Broward Blvd. to E. Las Olas Blvd.
- The study was conducted with our License Plate Recognition (LPR) system. The data was captured every hour, on the hour, for a 24 hour period.
- The data shows that an average of 84.4% of the vehicles parked in the study area were non-residents.

Day of Week	Total Vehicles	Residents	Non-Residents	% of Residents	% of Non-Res
Sunday	130	14	116	10.8%	89.2%
Monday	102	18	84	17.6%	82.4%
Tuesday	93	17	76	18.3%	81.7%
Wednesday	103	15	88	14.6%	85.4%
Thursday	58	14	44	24.1%	75.9%
Friday	70	12	58	17.1%	82.9%
Saturday	116	15	101	12.9%	87.1%
Totals All Days	672	105	567		
		15.6%	84.4%		

# Residential Parking Permit Program

- The proposed area for the residential parking permit program for Beverly Heights is from S. Federal Highway to NE 12<sup>th</sup> Avenue and From E. Broward Blvd. to E. Las Olas Blvd
- The proposed restriction period for non-neighbor vehicles in the neighborhood would be seven days a week from 10am to 8pm; however the data shows eligibility to midnight.
- The cost of the annual permits will be \$30.



# Quality of Life Issues

## Vehicle Safety / No parking



# Quality of Life Issues

## Trash

