



SE 17th Street Mobility Plan

Commission Conference Meeting

March 7, 2017



CAM 17-0193
CITY OF FORT LAUDERDALE

Exhibit 1

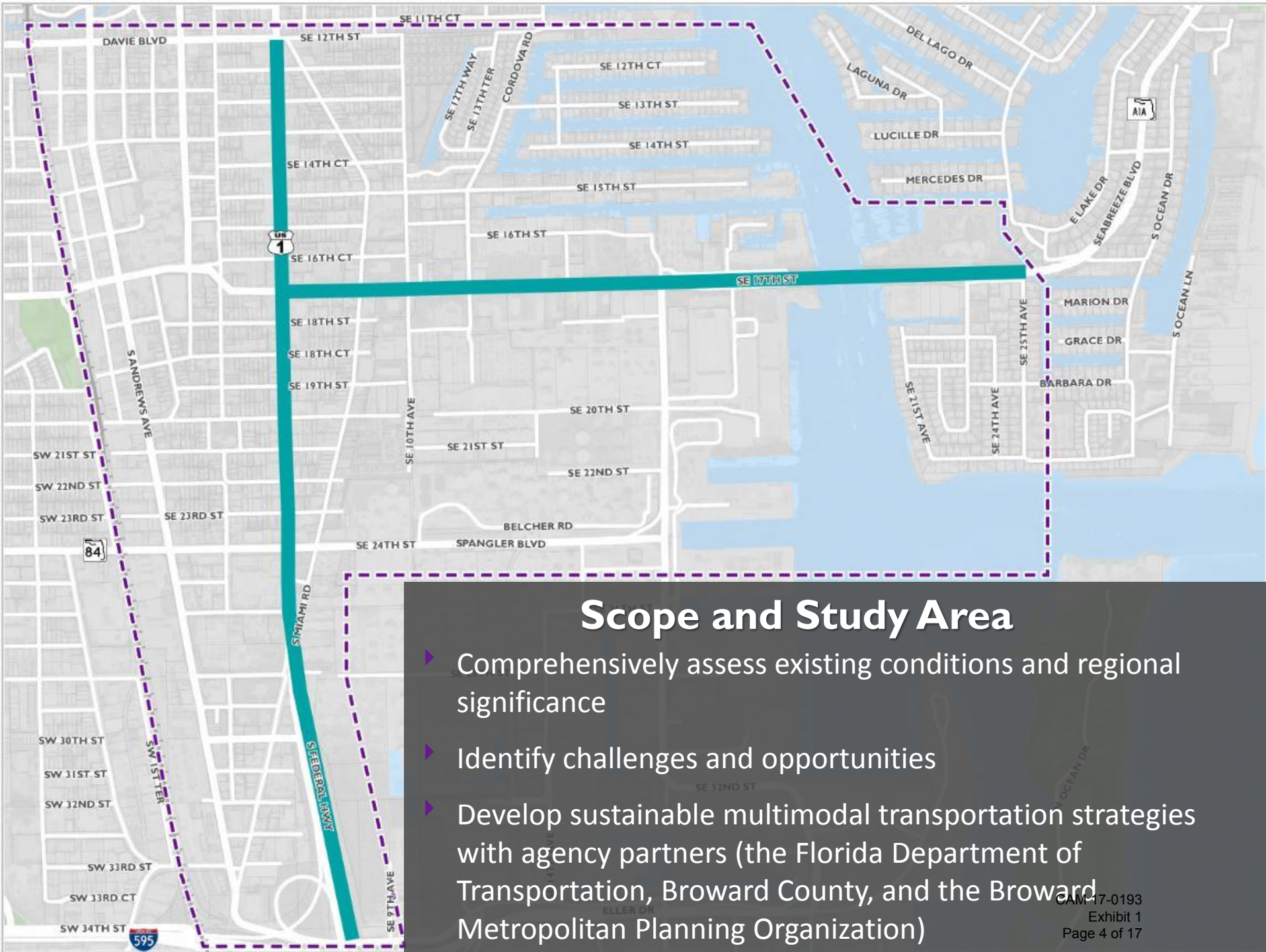
Page 1 of 17

Agenda

- Recap plan scope / goals
- Outline plan efforts to date
- Identify early successes
- Cover types of recommendations
- Highlight high impact recommendations
- Next steps/ implementation
- Discussion

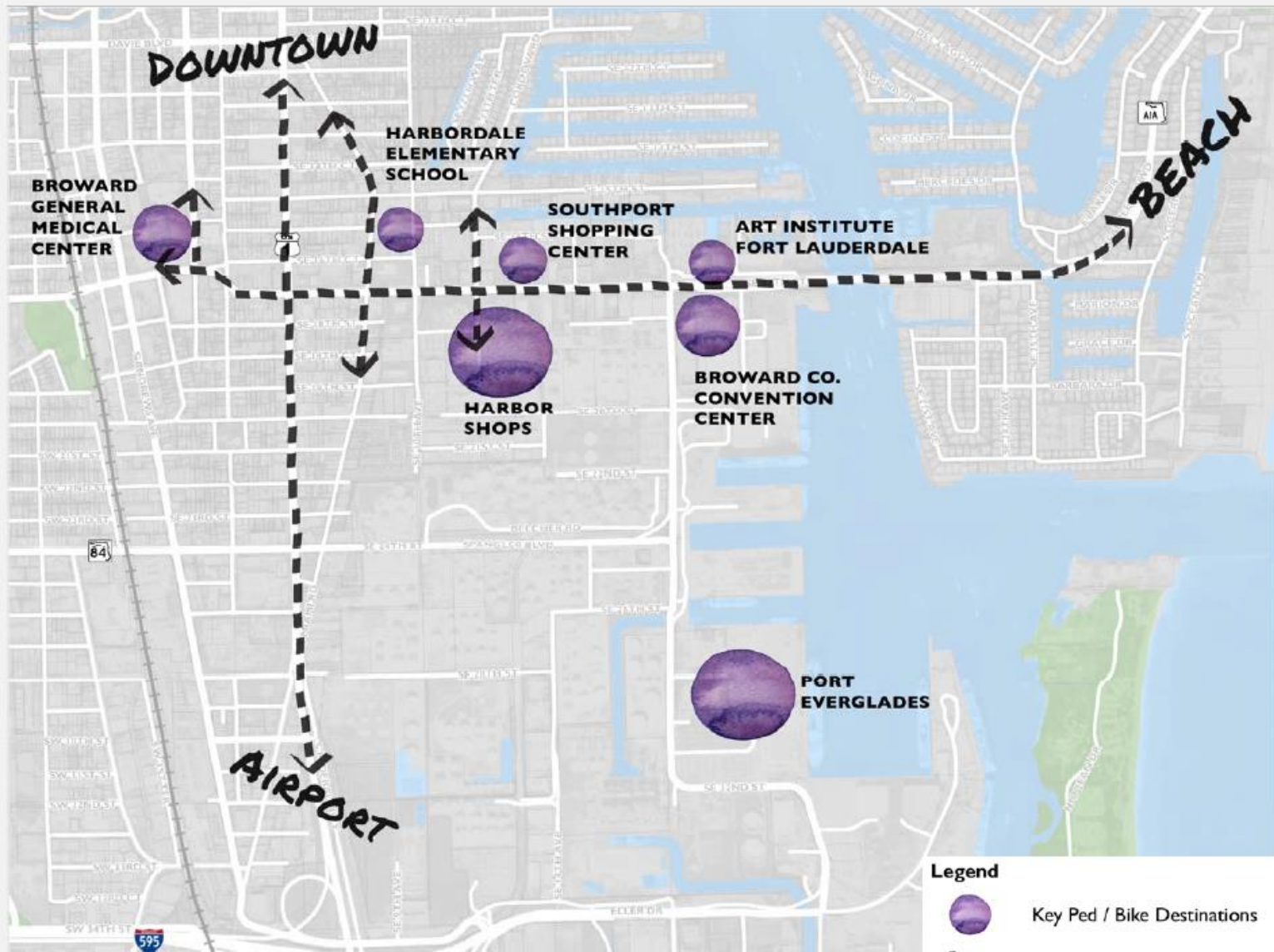
Plan scope/goals

- Traffic
- Pedestrian Safety/Connectivity
- Bicycle Safety/Connectivity



Scope and Study Area

- ▶ Comprehensively assess existing conditions and regional significance
- ▶ Identify challenges and opportunities
- ▶ Develop sustainable multimodal transportation strategies with agency partners (the Florida Department of Transportation, Broward County, and the Broward Metropolitan Planning Organization)



Key Destinations Within and Near Study Area

CAM 17-0193

Exhibit 1

Page 5 of 17

SE 17th St Corridor Characteristics

- Commercial land use with surrounding residential neighborhoods
- Major arterial roadway classification – *State owns the corridor and connecting US 1/Federal Highway*
- Major entrance/access to the Beach
- Port Everglades main access for shopping/dining
- Convention Center main access
- Home to a large outdoor shopping complex

Balancing the Needs

- High traffic volume
- High pedestrian volume
- Major east/west bike route
- High crash rates

- ▶ 2,691 Total Crashes
 - ▶ 2,566 (95%) Vehicular crashes
 - ▶ 74 (3%) Pedestrian Crashes
 - ▶ 51 (2%) Bicycle Crashes
 - ▶ 648 (24%) Injuries
 - ▶ 5 Fatalities
- ▶ Most Common Types
 - ▶ Other (753)
 - ▶ Rear End (740)
 - ▶ Sideswipe (272)



Plan Efforts to Date

- Plan kicked off in *July 2015*
- **PAWG** established to review issues and proposed recommendations – 4 meetings at key milestones
- Collected vehicle, bicycle, and pedestrian counts and turning movements and in-field observations
7/13/15 & 3/14/16

City of Fort Lauderdale	Transportation and Mobility
	Department of Sustainable Development
	Finance Department
	Public Works Department
Broward County	Traffic and Engineering
	Transit Division
	Public Works
	Planning and Redevelopment
	Highway Construction & Engineering
	Convention Center
Florida Department of Transportation	Port Everglades
	School Board
	Operations
	Office of Modal Development
Broward Metropolitan Planning Organization	Planning
	Design
	Livability Planning
	Bicycle and Pedestrian Planning

Project Agency Working Group (PAWG)

Plan Efforts to Date

- Community meeting (issues & opportunities) – 11/9/15
- Community meeting (review proposed strategies) 4/25/16
- Community meeting (present recommendations) 12/14/16
- Stakeholder meetings throughout the study
- Vet the proposed strategies & finalize proposed recommendations

Early Successes

- Signal retiming study & changes made – *April 2016*
 - Longer signal length along SE 17th St in peak hours
 - Leading pedestrian intervals (LPI) at 10th Ave., Cordova, and Eisenhower
- Port security entrance moved south past Convention Center entrance
- New signal at SE 15th Avenue
- 595 on ramp investigation
- Successful grant application for changes to Cordova Road

Recommendations Overview

Congestion

Traffic and congestion was the number one issue identified by community members particularly on US 1 and SE 17th Street.

Inadequate Pedestrian & Bike Facilities

Pedestrian and bicycle facilities are lacking in connectivity, safety features, and comfort.

Network Connectivity

Lack of network connections forces traffic on to SE 17th Street, creating more congestion.

Access Management

Encouraging business to provide better cross access could improve connectivity and congestion.

Traffic Calming

Traffic calming is needed and desired by the community in residential areas.

Freight Drop Off Issues

Local freight deliveries to businesses, restaurants, and shops sometimes block traffic

- Approximately 100 recommendations
 - Signalization
 - Capital Improvements
 - Operational Changes
 - Policy Changes
 - Other
- City, County, State, Broward MPO Jurisdiction

High Impact Recommendations

- Explore installing a shared use path along SE 17th Street - Explore with property owners using a portion of the 20' interdistrict corridor
- Evaluate establishing a southern parallel street to SE 17th Street
- Add an additional on-ramp onto I-595
- Institute signal timing plans for special events at the Convention Center and high cruise days at the Port

High Impact Recommendations

- Install wayfinding signage
- Redesign the intersection of Eisenhower/Grande
- Enforce truck routing to the Port using Eller Drive
- Development review changes
- Form stakeholder working group to shepherd plan recommendation implementation

Next Steps / Implementation

- Finalize Plan – *March 2017*
- Adoption of Plan – *April 2017*
- Advance some recommendations through existing resources and programs – *Following Plan Adoption*

Next Steps / Implementation

- Initiate Kickoff Transit Oriented Development (TOD) planning grant to define policy changes to development review and mitigation – *Early 2017*
- Kickoff the Beach Traffic Management Plan – *Early 2017*
- Revisit bridge opening frequencies and operations - *Underway*
- Community meetings with the Convention Center/Hotel project team on traffic methodology
- Finalize 595 on-ramp study results and next steps
- Initiate Public Input for Cordova Road Project
- Implement wayfinding signage along the corridor
- Start development of a special events signalization plan protocol with the County
- Launch LauderStreet Maintenance of Traffic tool
- High Visibility Enforcement Campaign (education, warning, and enforcement of traffic violations) – *January 2016 – June 2017*

Next Steps / Implementation

- Form stakeholder working group to shepherd implementation of remaining plan recommendations— *Resource and timing TBD*
- facilitate cross agency coordination
- lead City-based recommendations (capital, operational, and policy)
- Monitor and report on progress



Discussion