

Legend

Cone

Lane Identification + Direction of Traffic


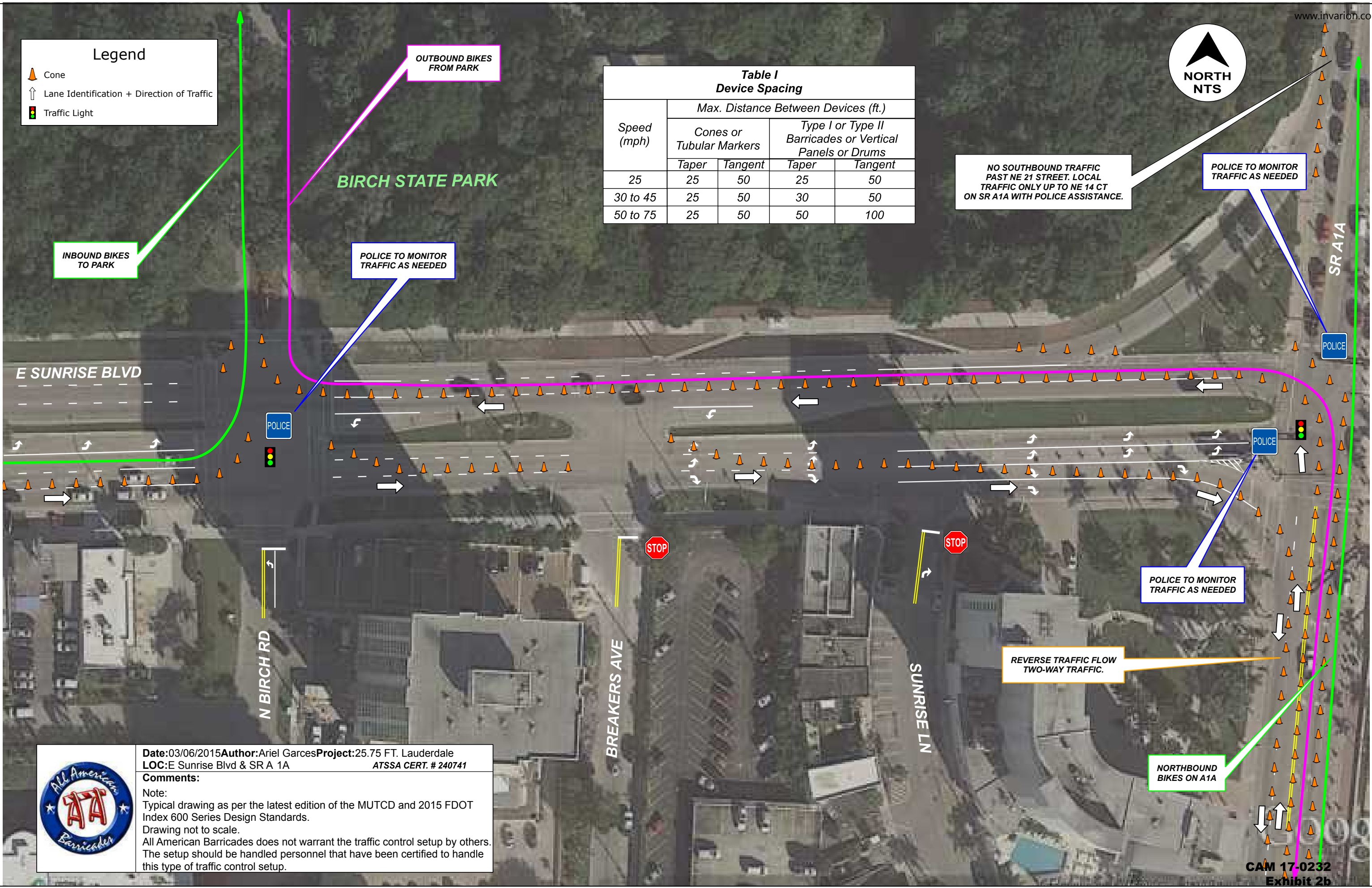
Traffic Light

Table I Device Spacing				
Speed (mph)	Max. Distance Between Devices (ft.)			
	Cones or Tubular Markers		Type I or Type II Barricades or Vertical Panels or Drums	
	Taper	Tangent	Taper	Tangent
25	25	50	25	50
30 to 45	25	50	30	50
50 to 75	25	50	50	100

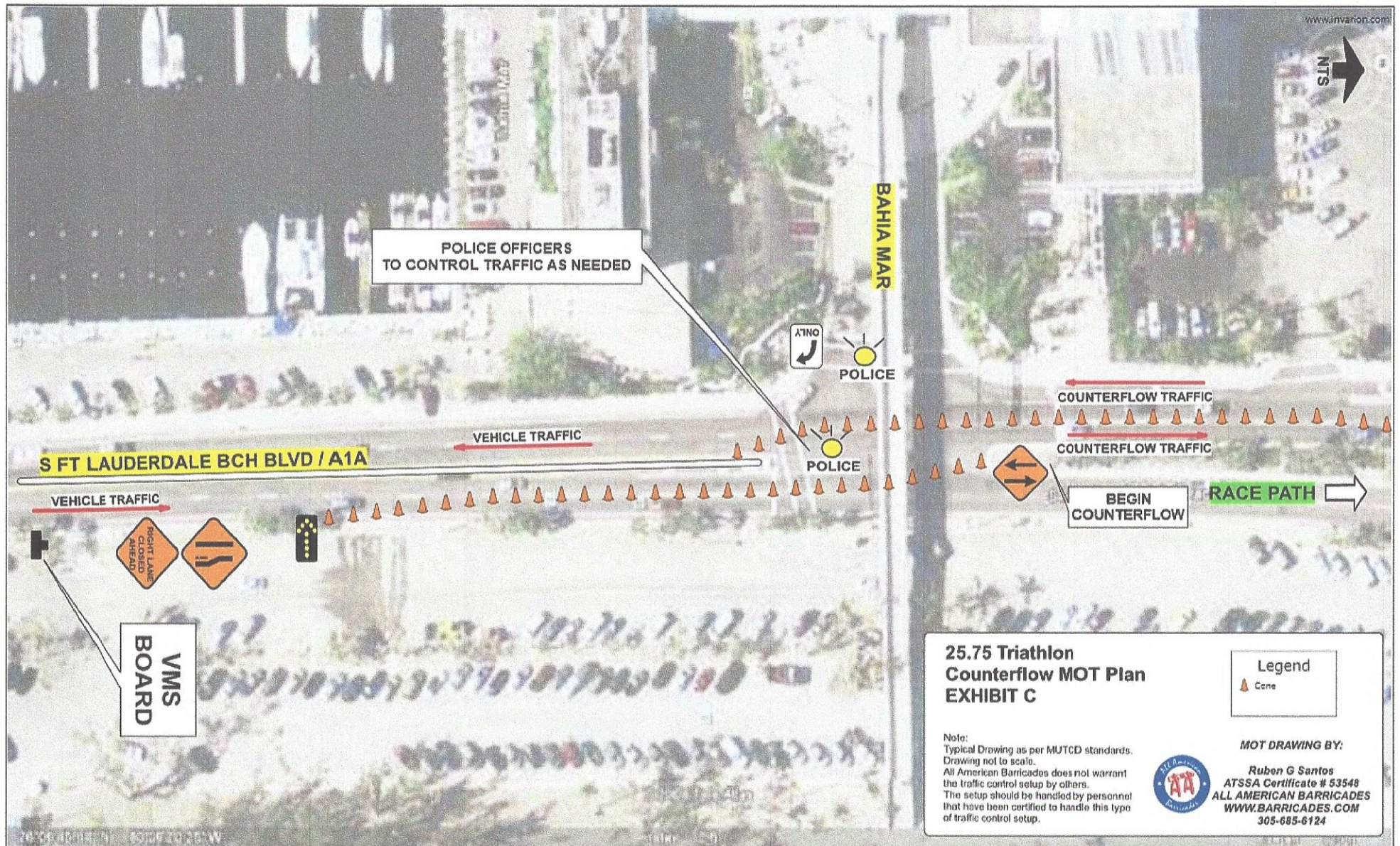


Date:03/06/2015**Author:**Ariel Garces**Project:**25.75 FT. Lauderdale
LOC:E Sunrise Blvd & SR A 1A**ATSSA CERT. #** 240741

Comments:

Note:
Typical drawing as per the latest edition of the MUTCD and 2015 FDOT Index 600 Series Design Standards.
Drawing not to scale.
All American Barricades does not warrant the traffic control setup by others. The setup should be handled personnel that have been certified to handle this type of traffic control setup.







**Bicycles stay on
inner-lanes**

**Police allow only
local traffic**

**Barricades and
cones tightly Set**

***Construction on
North Bound
starting before
E Sunrise Blvd***



Law enforcement



Traffic/Protection cones



Barricade



Construction



Direction of Bicycles



Direction of Vehicles

**Las Olas International Triathlon
A1A & NE 14th CT**

EXHIBIT D



- *Bicycles have the right of way
- *Do not park on Bicycle path
- *Direct flow of traffic

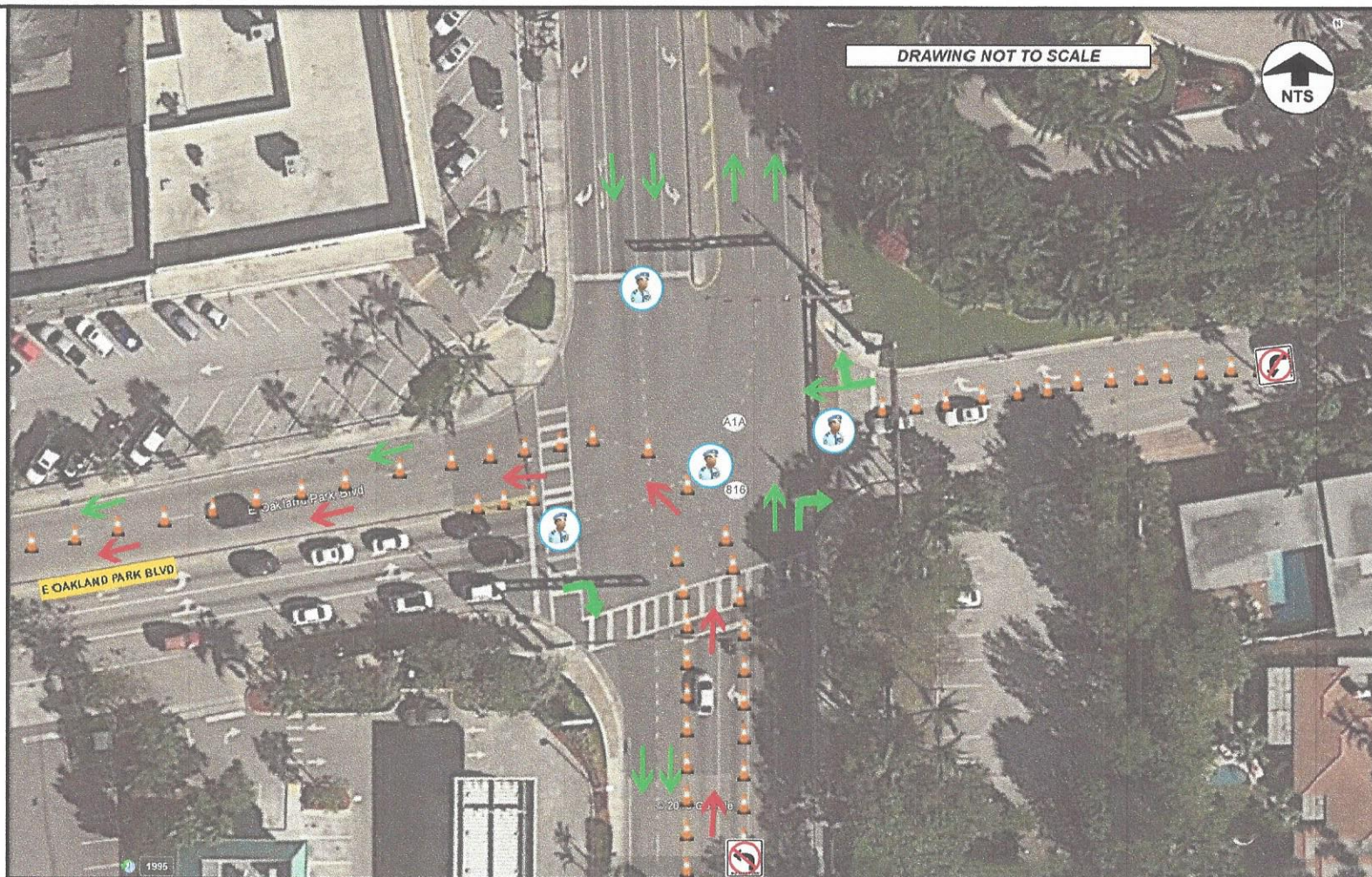
Officers Monitoring South & North bound traffic on Ne 23st crossing over bike path





- *Bicycles have the right of way
- *Do not park on Bicycle path
- *Direct flow of traffic

Officers Monitoring SOUTH & NORTH, EAST & WEST-bound traffic on Oakland Park Blvd & A1A crossing over bike path



- | | | |
|--------------------------|---------------|-----------------------|
| Law enforcement | Barricade | Direction of Bicycles |
| Traffic/Protection cones | Traffic signs | Direction of Vehicles |

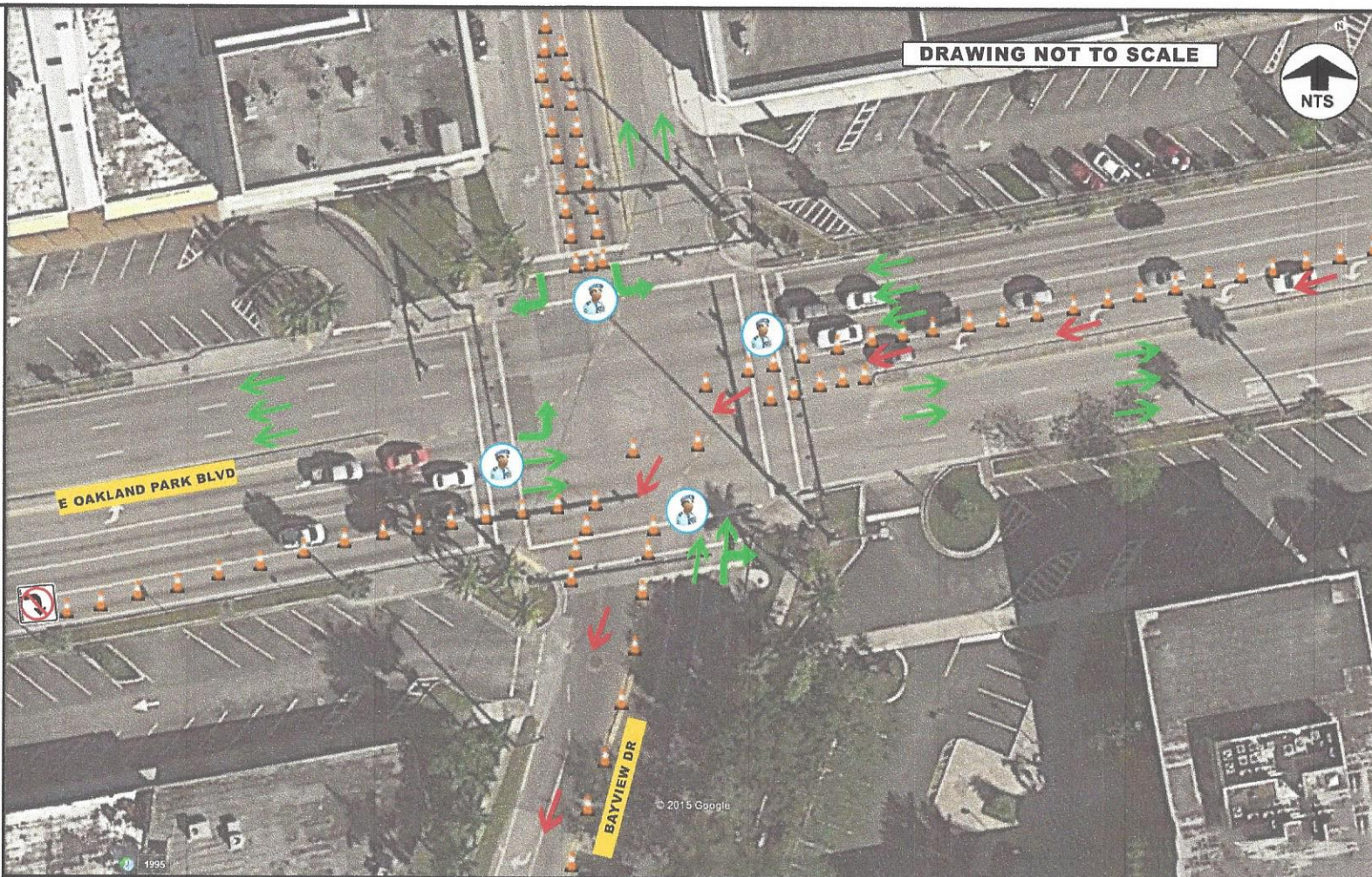
**Las Olas International Triathlon
A1A & Oakland Park Blvd
EXHIBIT F**



- *Bicycles have the right of way
- *Do not park on Bicycle path
- *Direct flow of traffic

Bayview Dr Closed South bound starting at E Oakland Park Blvd

Officers Monitoring SOUTH & NORTH, EAST & WEST-bound traffic on Oakland Park Blvd & Bayview Dr crossing over bike path



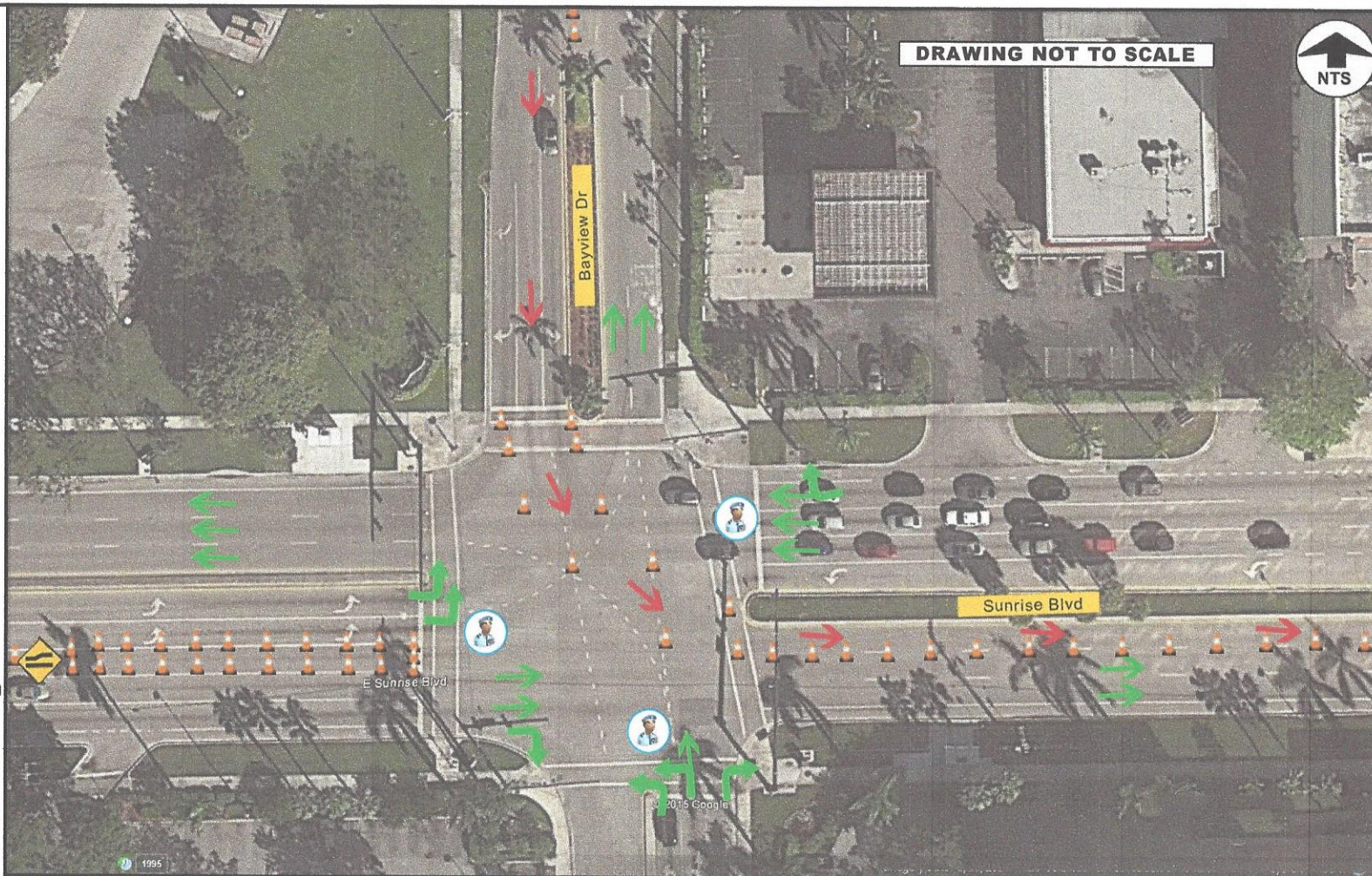
- | | | |
|--------------------------|---------------|-----------------------|
| Law enforcement | Barricade | Direction of Bicycles |
| Traffic/Protection cones | Traffic signs | Direction of Vehicles |

Las Olas International Triathlon
Oakland Park Blvd & Bayview Dr
EXHIBIT G



- *Bicycles have the right of way
- *Do not park on Bicycle path
- *Direct flow of traffic

Officers Monitoring SOUTH & NORTH, EAST & WEST-bound traffic on Sunrise Blvd crossing over bike path



- | | | |
|--------------------------|---------------|-----------------------|
| Law enforcement | Barricade | Direction of Bicycles |
| Traffic/Protection cones | Traffic signs | Direction of Vehicles |

Las Olas International Triathlon
Bayview Dr & Sunrise Blvd
EXHIBIT H