



PARKS AND RECREATION SYSTEM MASTER PLAN COMMISSION CONFERENCE MEETING

CITY OF FORT LAUDERDALE

PURPOSE

'Develop a comprehensive parks system master plan to serve as a guide for the planning, acquisition, development and operations of parks and recreation programs and facilities, that also advances the press play and fast forward planning efforts completed by the City of Fort Lauderdale'

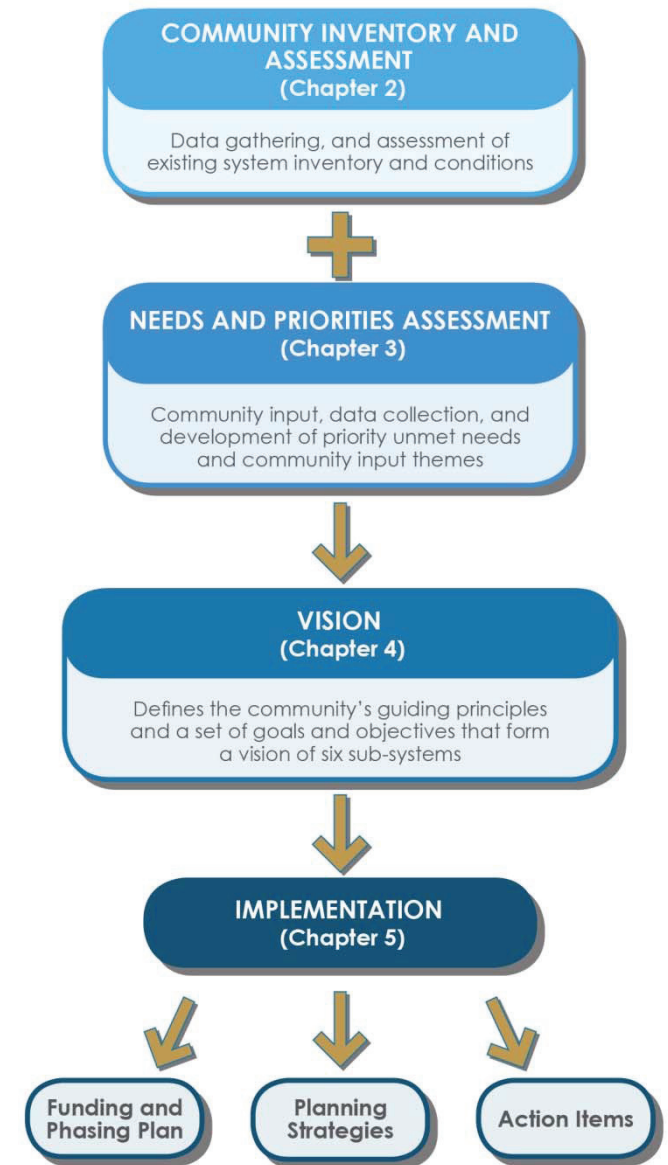


AGENDA

1 OVERVIEW

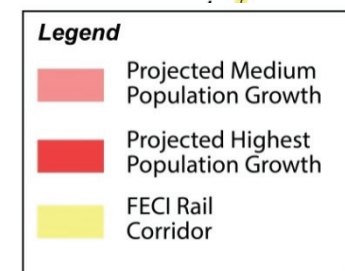
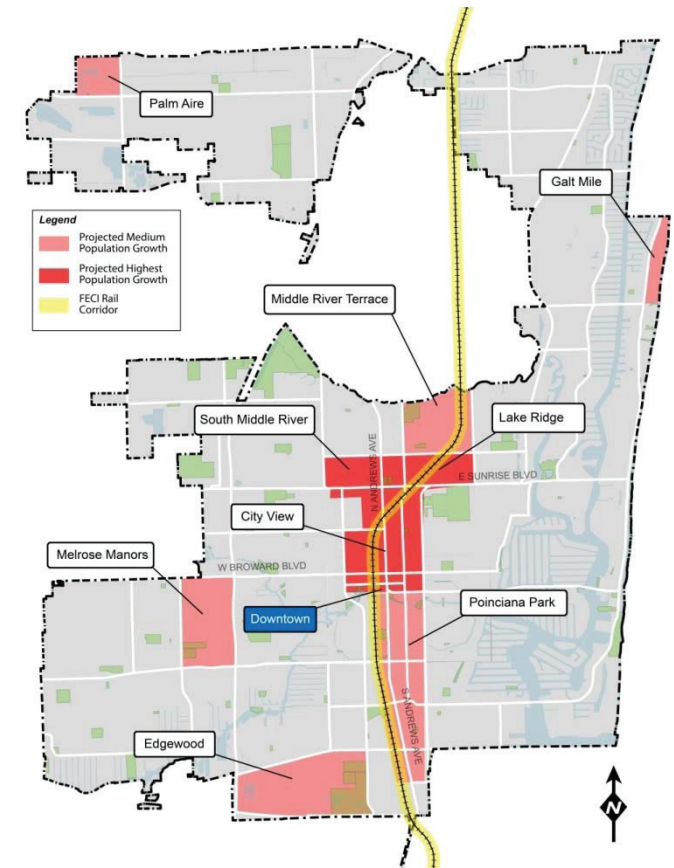
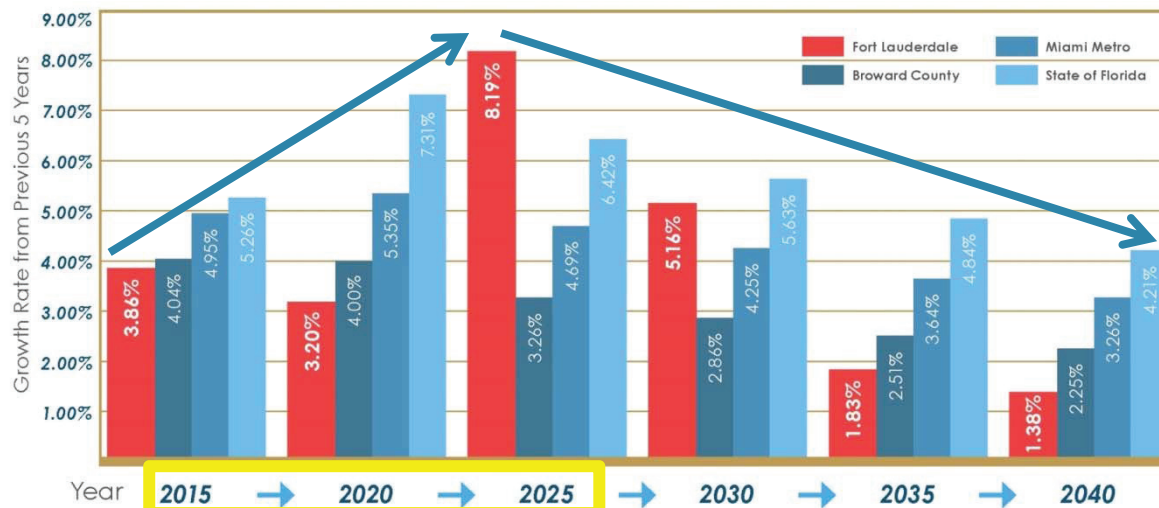
- RESEARCH AND ANALYSIS
- NEEDS AND PRIORITIES
- FUTURE VISION
- IMPLEMENTATION

2 RECOMMENDATIONS



PLANNING FOR GROWTH

- Increase of 5,500+ people in the next 5 years
- Additional 24,400+ people between 2020 and 2030
- The highest concentration of growth projected north of downtown along FECI Rail Corridor
- Largest population increase: Ages 55-64 (+ 4.3%)



Focus Period for Master Plan

COMMUNITY INVENTORY AND ASSESSMENT

SYSTEM WIDE SUCCESSES

- High level of maintenance prevalent in most parks, with most making a good impression to visitors;
- Most sites are accessible, clean and free of litter, with a majority providing a feeling of perceived safety

SYSTEM WIDE OPPORTUNITIES

- Improvements to wayfinding, signage, design standards and overall accessibility;
- Improvement in environmental sustainability, enhancement of environmental awareness and education, and increasing access to ecological features;

System-wide Ratings

100 - 75 Exceeding Expectations
74 - 50 Meeting Expectations
49 - 50 Not Meeting Expectations

Design and Construction

75

Effectiveness

68

Comfort and Image

80

Condition

77

Access and Linkages

69

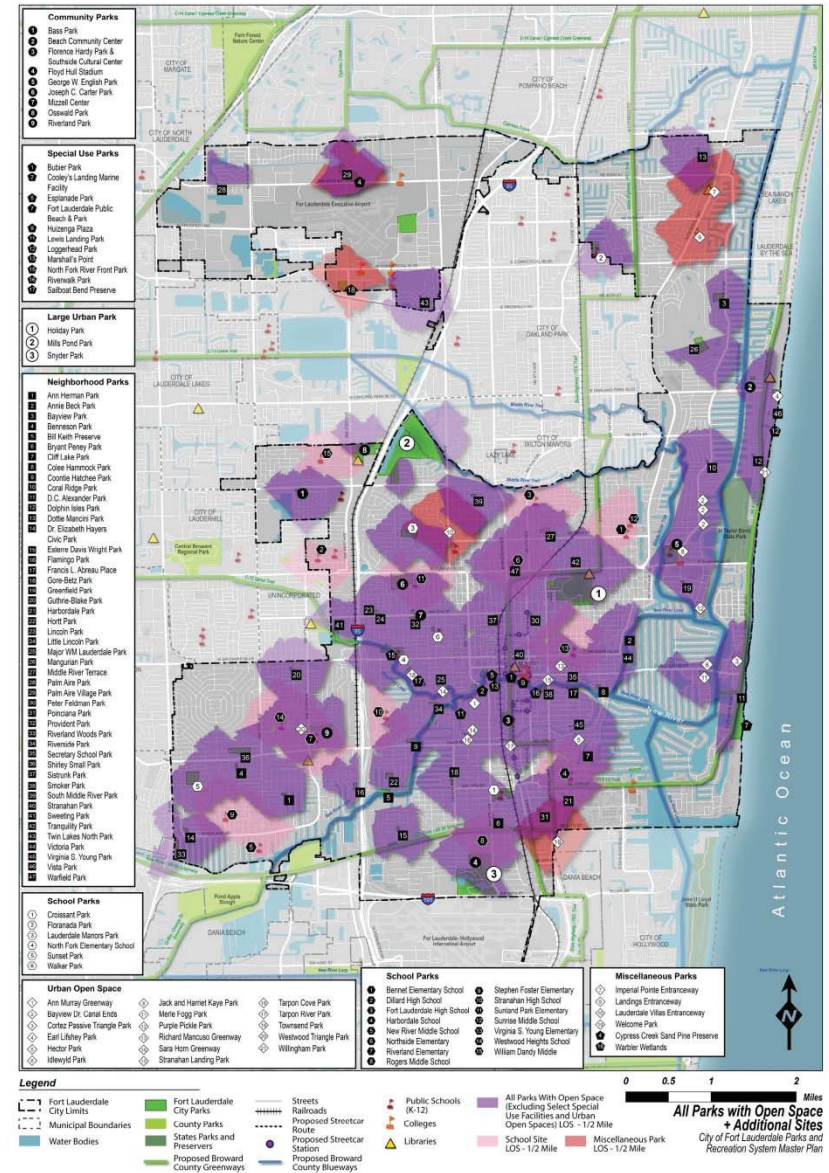
Sustainability

66



LEVEL OF SERVICE - ACCESS

Combination of existing park sites and school sites with agreements for public use.

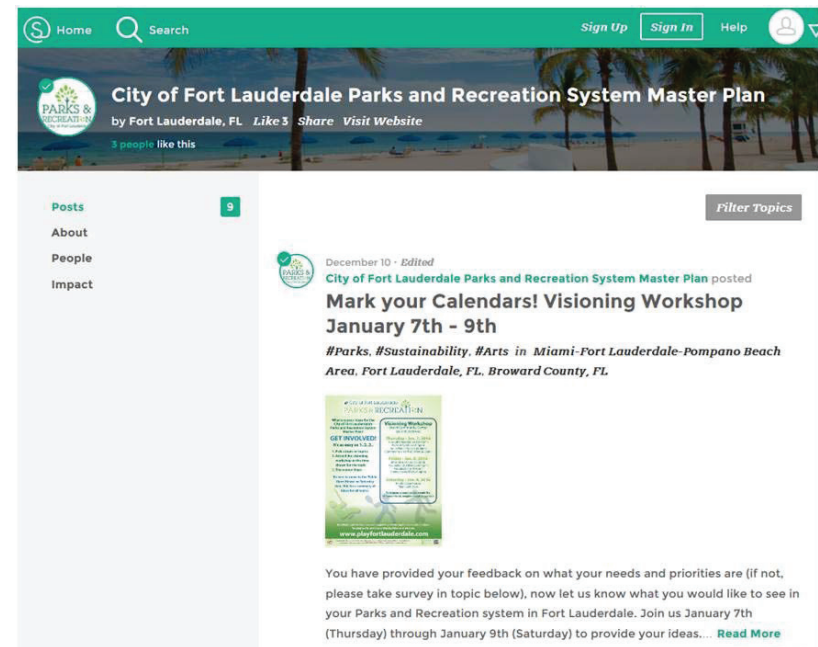


TECHNIQUES

- **Community Meetings**
(124 participants)
- **Focus Groups** (10 groups)
- **Stakeholder Interviews**
 - Elected officials, DDA, Riverwalk, BCPSS, PRB Advisory Board
- **Online Public Opinion Survey**
- **Statistically Valid Survey**
(852 completed surveys)



PUBLIC INVOLVEMENT



PUBLIC INVOLVEMENT RESULTS

COMMON THEMES

- Promote **health and fitness**
- **Activate** park spaces more
- Increase availability of **athletic fields**
- Utilize **Downtown** and the **Riverwalk** resources more
- Develop more strategic **partnerships**
- **Provide more small parks** and open spaces in residential areas
- **Enhance connectivity** and walkability
- Provide more programs for **youth and seniors**
- Increase opportunities for **public art**
- **Improve Communication** between residents and department
- **Upgrade** existing facilities
- Improve **safety and security**



SURVEYS

ONLINE SURVEY

- Link posted at www.playfortlauderdale.com
- Used to compare results to statistically valid survey

The screenshot shows the online survey interface for the Fort Lauderdale Parks and Recreation System Master Plan Survey. It features the City of Fort Lauderdale logo and a progress bar indicating 22% completion. The survey questions are as follows:

- Which one of the following options best describes you?
 - ☐ Live in the City of Fort Lauderdale
 - ☐ Live and Work in the City of Fort Lauderdale
 - ☐ Work in the City of Fort Lauderdale
 - ☐ Live and Work outside the City of Fort Lauderdale
- Do you live in a Single-Family Detached or Attached (i.e. townhouse, apartment building, condo) house?
 - ☐ Single Family
 - ☐ Multi-Family
- Which City Commission District do you or your family live in?
 - ☐ District 1
 - ☐ District 2
 - ☐ District 3
 - ☐ District 4
 - ☐ I am not a resident of Fort Lauderdale
- Do you or your family speak a language other than English at home?
 - ☐ YES

MAIL / TELEPHONE SURVEY

- 4 zones plus city-wide results
- Mailed to 4,000 households
- Responses completed by mail/ phone/ website
- Directions in English and Spanish
- Random / stratified to match each sample zone's demographics

The screenshot shows the mail/telephone survey form titled "Community Interest and Opinion Survey: Let your voice be heard today!". It includes instructions for the City of Fort Lauderdale Parks and Recreation Department. The form is divided into two main sections: "Quality of Parks and Facilities" and "Which FACILITY of these parks and recreation facilities do you think should receive the MOST ATTENTION from the City of Fort Lauderdale over the next TWO years?".

Quality of Parks and Facilities

1. Please indicate if you use the following major parks and recreation facility types provided by the City of Fort Lauderdale. Parks and Recreation Department by circling the "Yes" or "No" next to each of the types of parks and recreation facilities. If you do use the type of facility, please rate your overall satisfaction on a scale of 4 to 1 where 4 means "Very Satisfied" and 1 means "Very Dissatisfied."

How satisfied are you with the following City of Fort Lauderdale parks and recreation services/facilities?

	Yes	No	4	3	2	1
(A) Overall quality of beaches	Yes	No	4	3	2	1
(B) Overall quality of large community parks	Yes	No	4	3	2	1
(C) Overall quality of small neighborhood parks	Yes	No	4	3	2	1
(D) Overall quality of soccer fields	Yes	No	4	3	2	1
(E) Overall quality of youth baseball/softball fields	Yes	No	4	3	2	1
(F) Overall quality of football fields	Yes	No	4	3	2	1
(G) Overall quality of adult softball fields	Yes	No	4	3	2	1
(H) Overall quality of indoor community centers	Yes	No	4	3	2	1
(I) Overall quality of outdoor swimming pools	Yes	No	4	3	2	1
(J) Overall quality of City Marina (water/skating)	Yes	No	4	3	2	1
(K) Overall quality of Young's Center	Yes	No	4	3	2	1
(L) Overall quality of splash pads	Yes	No	4	3	2	1
(M) Overall quality of Fort Lauderdale Aquatics Complex	Yes	No	4	3	2	1
(N) Overall quality of dog parks	Yes	No	4	3	2	1

2. Which FACILITY of these parks and recreation facilities do you think should receive the MOST ATTENTION from the City of Fort Lauderdale over the next TWO years? (Please indicate your 1st, 2nd, and 3rd choices by writing the letters from Question #1 above in the spaces below.)

1st _____ 2nd _____ 3rd _____

3. How would you rate the overall quality of the City of Fort Lauderdale parks and recreation areas listed above in question #1 that you and members of your household have used during the past 12 months?

(1) Excellent (2) Fair (3) Don't know my City parks or recreation areas
(4) Good (5) Poor

4. What days and times do you most frequently use parks facilities and programs? (Check all that apply.)

(1) Weekday morning (2) Weekday evening (3) Weekend daytime
(4) Weekday afternoon (5) Weekend evening

16. Please indicate recreation use:

IF YES, please list the most frequent use:

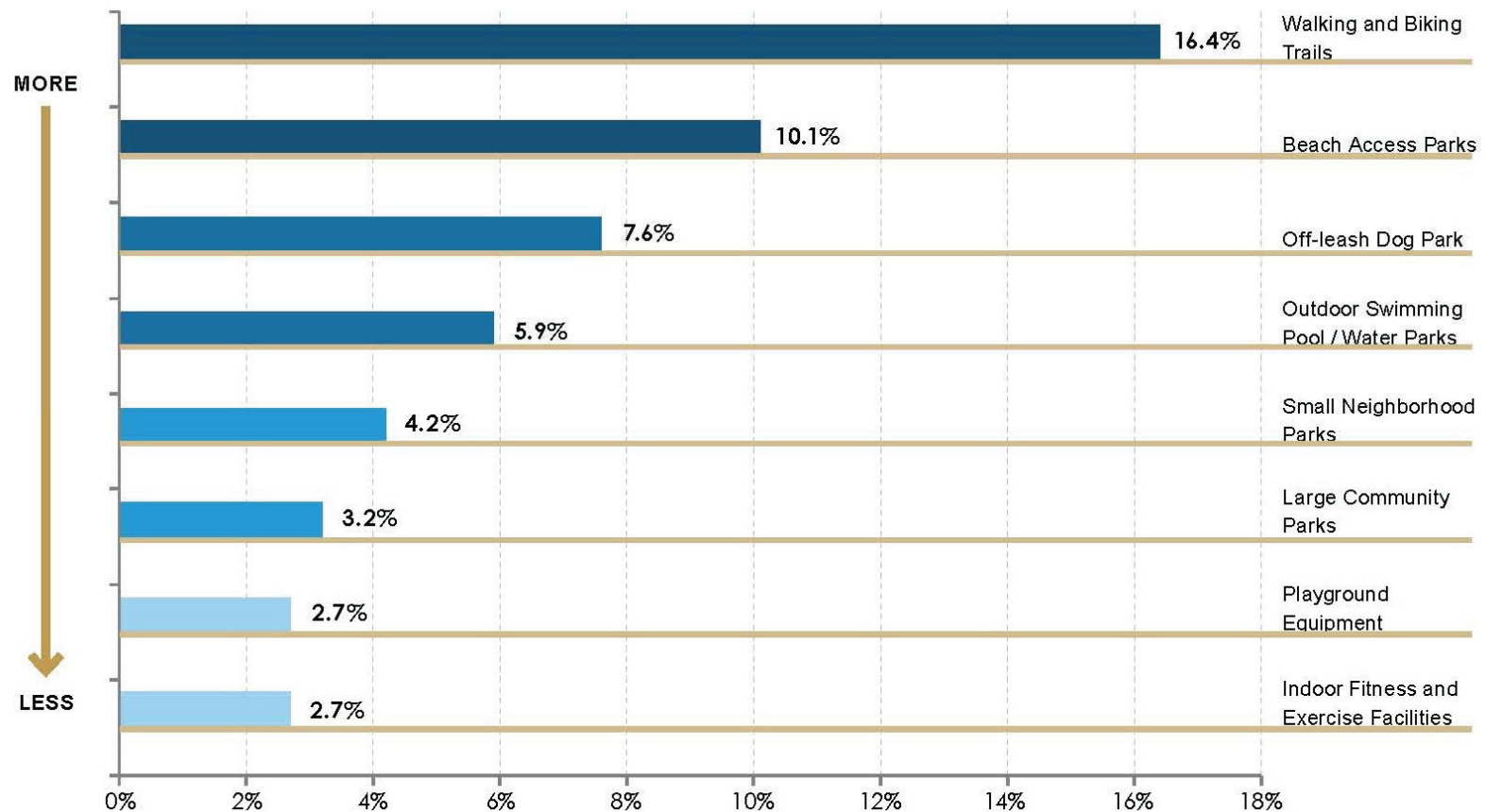
Type of Facility	Do You Have a Facility?	How Often Do You Use It?	How Often Do You Use It?	How Often Do You Use It?	How Often Do You Use It?
	Yes	No	1st	2nd	3rd
A. Soccer fields	Yes	No	5	4	3
B. Youth baseball and softball fields	Yes	No	5	4	3
C. Football fields	Yes	No	5	4	3
D. Outdoor tennis courts	Yes	No	5	4	3
E. Outdoor basketball courts	Yes	No	5	4	3
F. Adult softball fields	Yes	No	5	4	3
G. Official dog park	Yes	No	5	4	3
H. Outdoor swimming pools/water parks	Yes	No	5	4	3
I. Playground equipment	Yes	No	5	4	3
J. Outdoor basketball courts	Yes	No	5	4	3
K. Disc golf	Yes	No	5	4	3
L. Walking and biking trails	Yes	No	5	4	3
M. Nature center and trails	Yes	No	5	4	3
N. Small neighborhood parks	Yes	No	5	4	3
O. Large community parks	Yes	No	5	4	3
P. Beach access parks	Yes	No	5	4	3
Q. Canoe, kayak, and small boat water storage	Yes	No	5	4	3
R. Other	Yes	No	5	4	3
S. Outdoor swimming pools/water parks	Yes	No	5	4	3
T. Walking and biking trails	Yes	No	5	4	3
U. Indoor swimming pools/water parks	Yes	No	5	4	3
V. Indoor tennis courts	Yes	No	5	4	3
W. Indoor basketball courts	Yes	No	5	4	3
X. Indoor basketball/volleyball courts	Yes	No	5	4	3
Y. Other	Yes	No	5	4	3

17. Which FOUR of the facilities from the list in Question #16 are MOST IMPORTANT to your household? (Using the letters in the left hand column of Question #16 above, please write in the letters below for your 1st, 2nd, 3rd, and 4th choices, or circle "NONE".)

1st _____ 2nd _____ 3rd _____ 4th _____ NONE

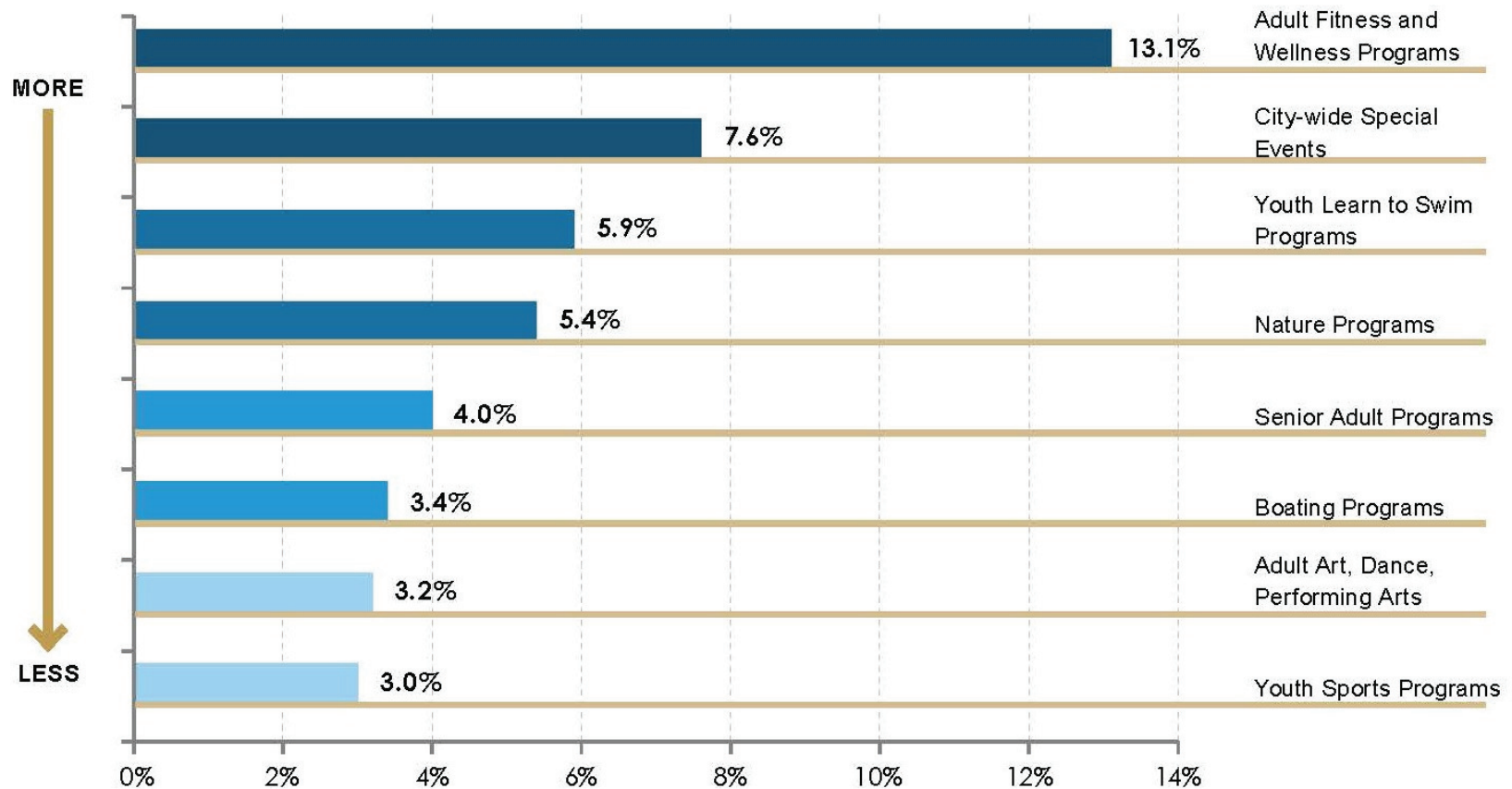
STATISTICAL SURVEY

TOP 8 MOST IMPORTANT PARK/RECREATION FACILITIES TO YOUR HOUSEHOLD?



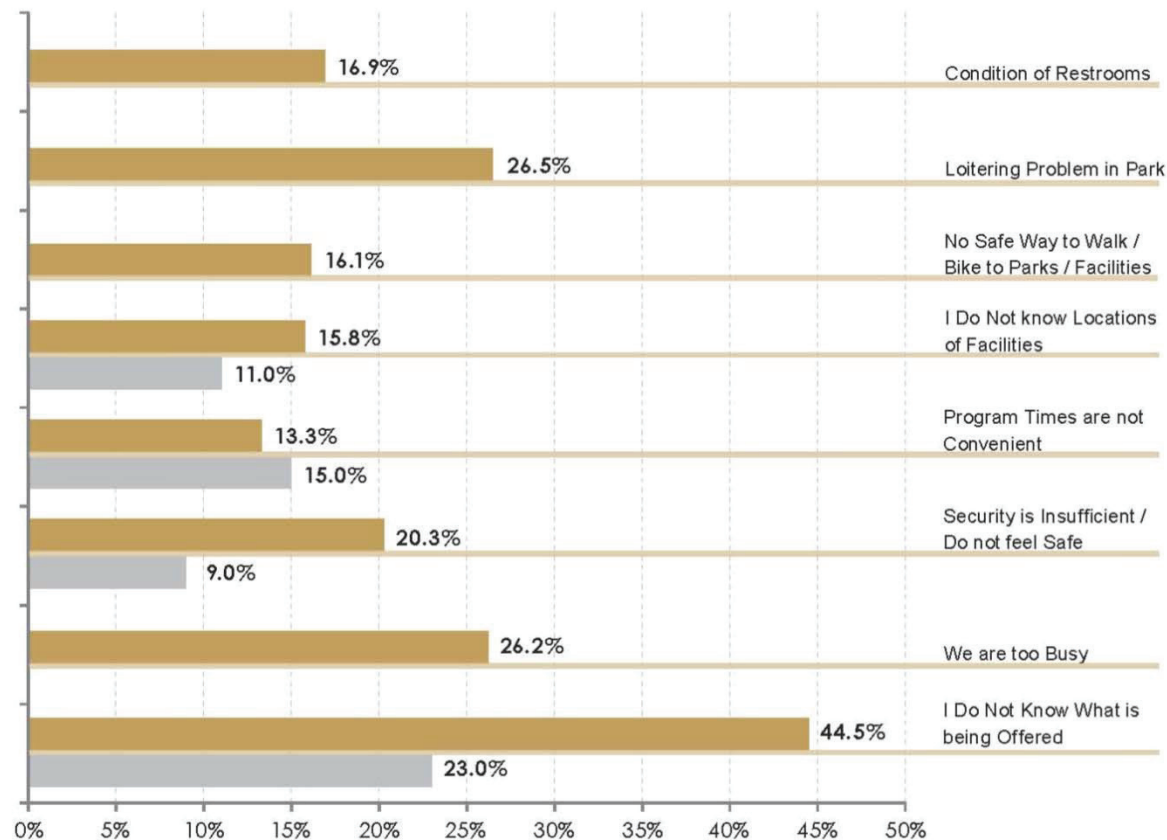
STATISTICAL SURVEY

TOP 8 MOST IMPORTANT RECREATION PROGRAMS TO YOUR HOUSEHOLD?



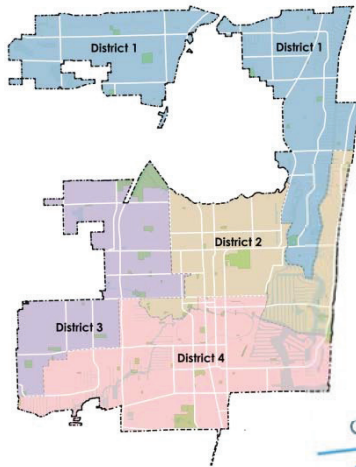
STATISTICAL SURVEY

TOP 8 REASONS THAT PREVENT YOU OR MEMBERS OF YOUR HOUSEHOLD FROM USING PARKS OR PARTICIPATING MORE OFTEN.



Fort Lauderdale Average
National Average

DISTRICT LEVEL ANALYSIS



Needs and Priorities Assessment

District 3 Survey Results Analysis



District 3 respondents recorded high "excellent" responses for both facilities and programs, however the facilities in this district received more "top" and less "good" responses than any other district. Neighbors in this district indicated low levels of walking and biking, however the use of public transportation is much higher than...

Select Comparison to City-wide Responses

The following tables show survey questions where District 3 responses differed significantly from city-wide responses:

1. How would you rate the overall quality of the City of Fort Lauderdale parks and recreation areas you have used during the past 12 months?	District 3	City-wide
Excellent	43.1%	32.7%
Good		
Fair		
Poor		

Needs and Priorities Assessment

District 1 Survey Results Analysis



Survey results indicate that neighbors in District 1 rated programs with more "excellent" responses than any other district. This district also received the lowest amount of responses for "walking" as a mode of commute, with reasons preventing park use including high responses for "too far from home" and "no safe way to walk/bike to facilities was a reason preventing park use."

Select Comparison to City-wide Responses

The following tables show survey questions where District 1 responses differed significantly from city-wide responses:

3. Overall, how would you rate the quality of the programs that you and members of your household participated in?	District 1	City-wide
Excellent	57.8%	27.0%
Good	45.9%	58.7%
Fair		
Poor		

Chapter 3

District 4 Survey Results Analysis



Positive responses (excellent and good) for facilities and programs in District 4 were higher than any other district, however, District 4 was the only district to record any "poor" responses for programs. Biking to parks and responses for programs is higher than the city-wide average, and safe places to walk/bike are the greatest concern for neighbors in this area. The top choices for actions funded with tax dollars in District 3 are "acquire additional open space/parkland" and "upgrade security of parks and nearby areas."

Select Comparison to City-wide Responses

The following tables show survey questions where District 4 responses differed significantly from city-wide responses:

2. Overall, how would you rate the quality of the programs that you and members of your household participated in?	District 4	City-wide
Excellent	2.1%	13.2%
Good	4.3%	1.1%
Fair		
Poor		

3. What ways do you travel to parks and recreation facilities that you use?	District 4	City-wide
Walk	43.2%	33.3%
Bike		
Public Transportation		
Other		

4. What reasons prevent you or other members of your household from using parks?	District 4	City-wide
Too far from home	23.1%	18.7%
No safe way to walk/bike to parks		
Other		

5. Which actions would you be most likely to fund with tax dollars?	District 4	City-wide
Acquire additional open space/parkland	16.2%	13.1%
Upgrade existing facilities	19.8%	18.7%
Other		

Table 3-26: District 4 Importance / Unmet Needs Matrix for Park and Recreation Facilities

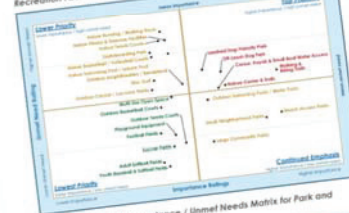


Table 3-27: District 4 Importance / Unmet Needs Matrix for Park and Recreation Programs



Chapter 3

District 2 Survey Results Analysis



District 2 was the only district below the city-wide average for "excellent" responses when asked to rate both facilities and programs. District 2 also has higher responses for walking and biking than any other district, however respondents indicated that having no safe way to walk/bike to facilities was a reason preventing park use. The top choice for actions funded with tax dollars in District 1 is "upgrade existing beaches", which is above the city-wide average.

Select Comparison to City-wide Responses

The following tables show survey questions where District 2 responses differed significantly from city-wide responses:

1. How would you rate the overall quality of the City of Fort Lauderdale parks and recreation areas you have used during the past 12 months?	District 2	City-wide
Excellent	15.8%	19.8%
Good	40.2%	52.7%
Fair		
Poor		

3. Overall, how would you rate the quality of the programs that you and members of your household participated in?	District 2	City-wide
Excellent	8.3%	27.0%
Good	49.4%	58.7%
Fair	22.3%	13.2%
Poor		

4. What reasons prevent you or other members of your household from using parks?	District 2	City-wide
Too far from home	44.0%	30.6%
No safe way to walk/bike to parks	43.9%	33.3%
Other		

5. Which actions would you be most likely to fund with tax dollars?	District 2	City-wide
Upgrade existing facilities	22.0%	18.7%
Other		

Table 3-22: District 2 Importance / Unmet Needs Matrix for Park and Recreation Facilities



Table 3-23: District 2 Importance / Unmet Needs Matrix for Park and Recreation Programs



Table 3-32: Needs Assessment Summary

- = Indicates Highest Need
- = Indicates Need

		Needs Assessment Techniques									
		Community Inventory Assessment	Community Meetings	Focus Groups	Stakeholder Interviews	Comparables Analysis	On-line Public Opinion Survey	Citizen Opinion and Interest Survey	Acreage Level of Service Analysis	Facility Level of Service Analysis	Access Level of Service Analysis
Facilities	Small Neighborhood Parks	●	●	●	●	●	●	●	●	●	●
	Walking and Biking Trails	●	●	●	●	●	●	●			●
	Beach Parks	●	●		●	●	●	●		●	●
	Large Community Parks	●		●		●		●	●	●	●
	Nature Centers and Trails	●	●			●	●	●			●
	Outdoor Event Space	●	●	●		●		●			
	Water / Boat Access	●		●		●	●	●			
	Indoor Fitness & Exercise Facilities	●	●	●			●	●			
	Outdoor Swimming Pools / Water Parks		●				●	●			●
	Dog Parks	●	●		●			●			
Programs and Activities	Senior Adult Programs	●	●	●	●	●	●	●			
	Adult Fitness and Wellness	●	●	●	●	●	●	●			
	City-wide Special Events	●	●	●		●	●	●			
	Adult Sports Programs	●	●	●	●		●	●			
	Nature Programs	●				●	●	●			
	Adult Art, Dance, Performing Arts	●	●	●		●		●			
	Water Fitness Programs		●				●	●			
	Programs for Disabled	●	●	●			●	●			
	Boating Programs						●	●			
	Youth Art, Dance, Performing Arts	●		●		●		●			



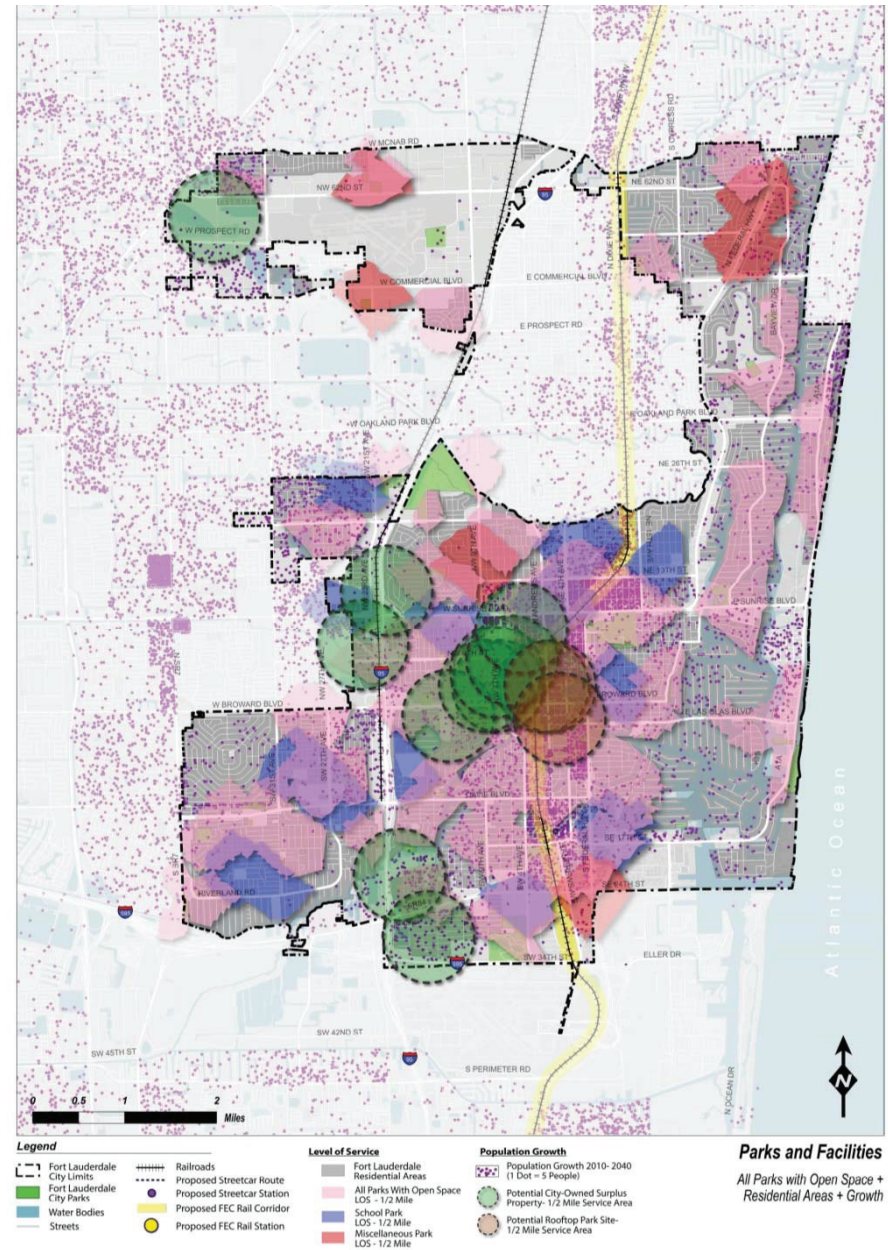
Vision Subsystems

For Management of a Diverse System



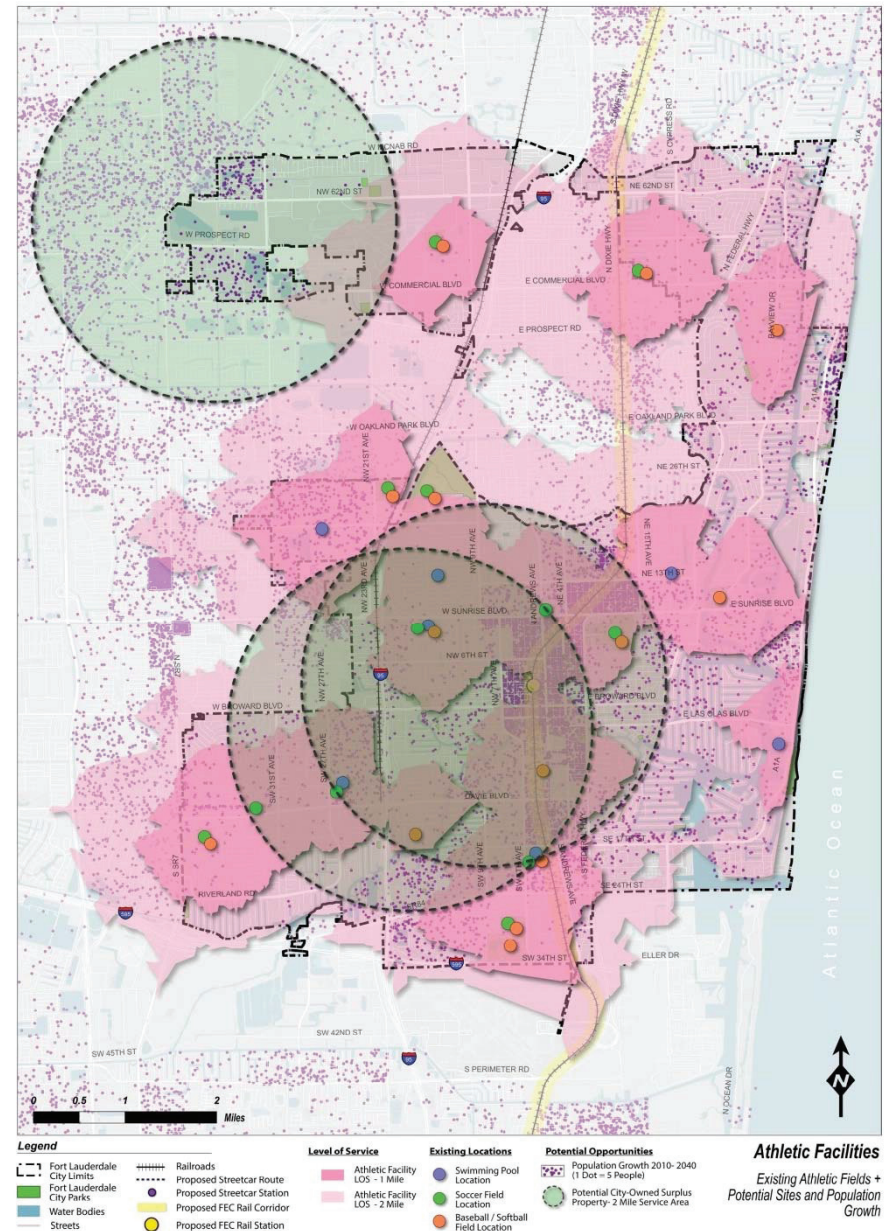
PARKS AND FACILITIES

- Acquire park property to address service gap areas
- Targeted acquisitions in urbanizing areas
- Seek creative ways to develop addition recreation facilities on public property

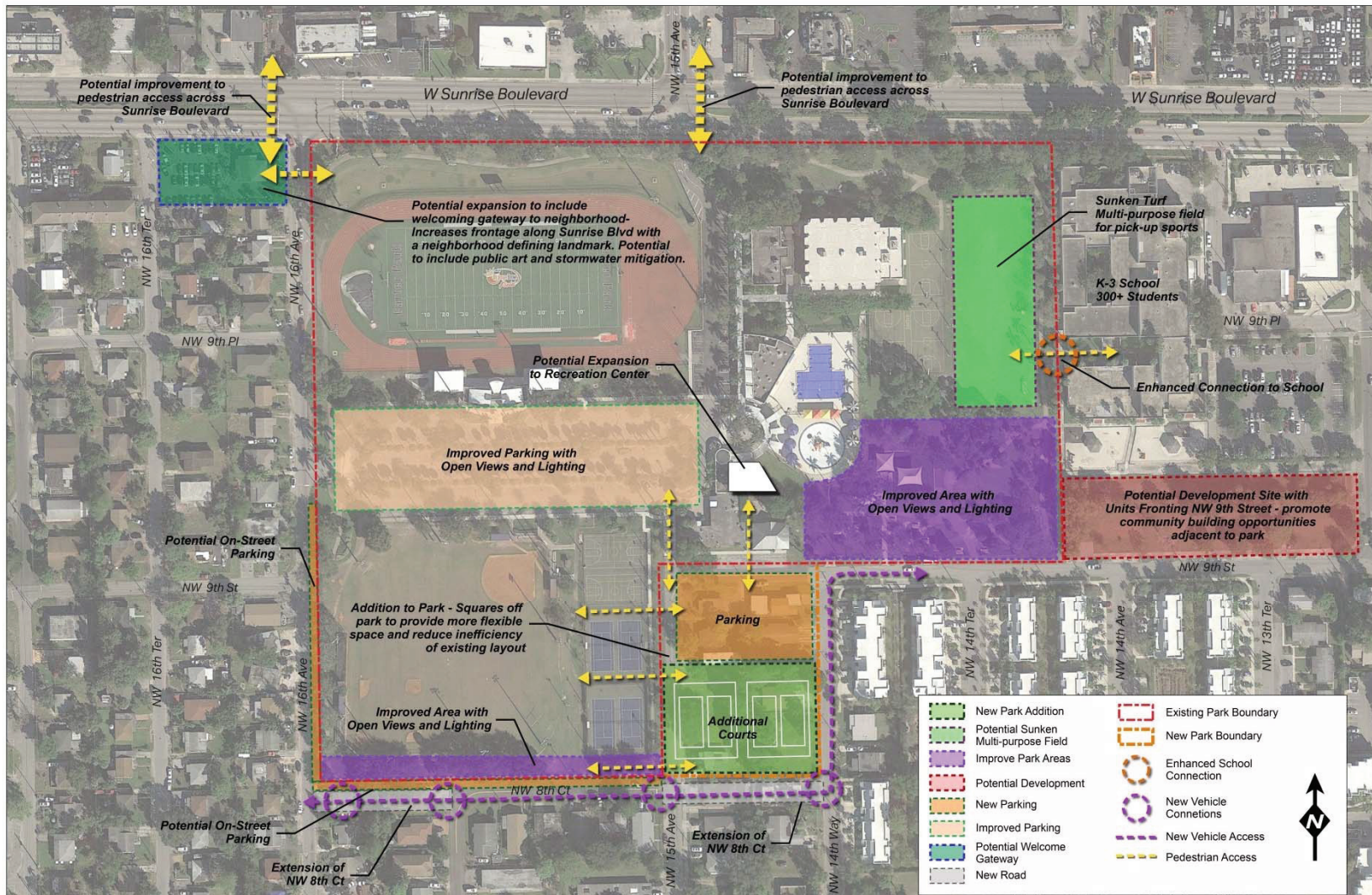


RECREATION AND ATHLETICS

- Upgrade existing athletic and recreation facilities
- Address deferred maintenance needs
- Provide new facilities to address gaps in service and overuse



COMMUNITY HEALTH & SAFETY



Joseph Carter Park



ART IN PUBLIC PLACES

Expand the integration of public art in parks and public open spaces

Examples of Public Art in Fort Lauderdale Parks

Sculptures, Statues and Monuments

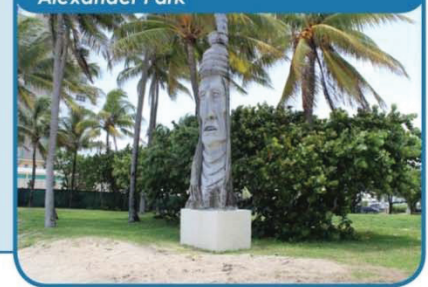
Bike Rack - Ann Herman Park



Sculpture - Esplanade Park



Native American Art - D.C. Alexander Park



Native American Monument - Lewis Landing Park



Architectural and Welcome Elements

Gates from Repurposed Materials - Harbordale Park



Architectural Structure - Peter Feldman Park



Murals and Pavement Paintings

Seat Wall Mural - Sistrunk Park



Painted Intersection on Las Olas Boulevard



Painted Book Exchange - Dottie Mancini Park



SUSTAINABILITY AND RESILIENCY

- Integrate sustainable strategies in all parks
- Utilize large athletic complexes for flood control
- Use parks to improve neighborhood drainage
- Incorporate storm water management practices in natural areas of parks to improve water quality and restore natural habitats

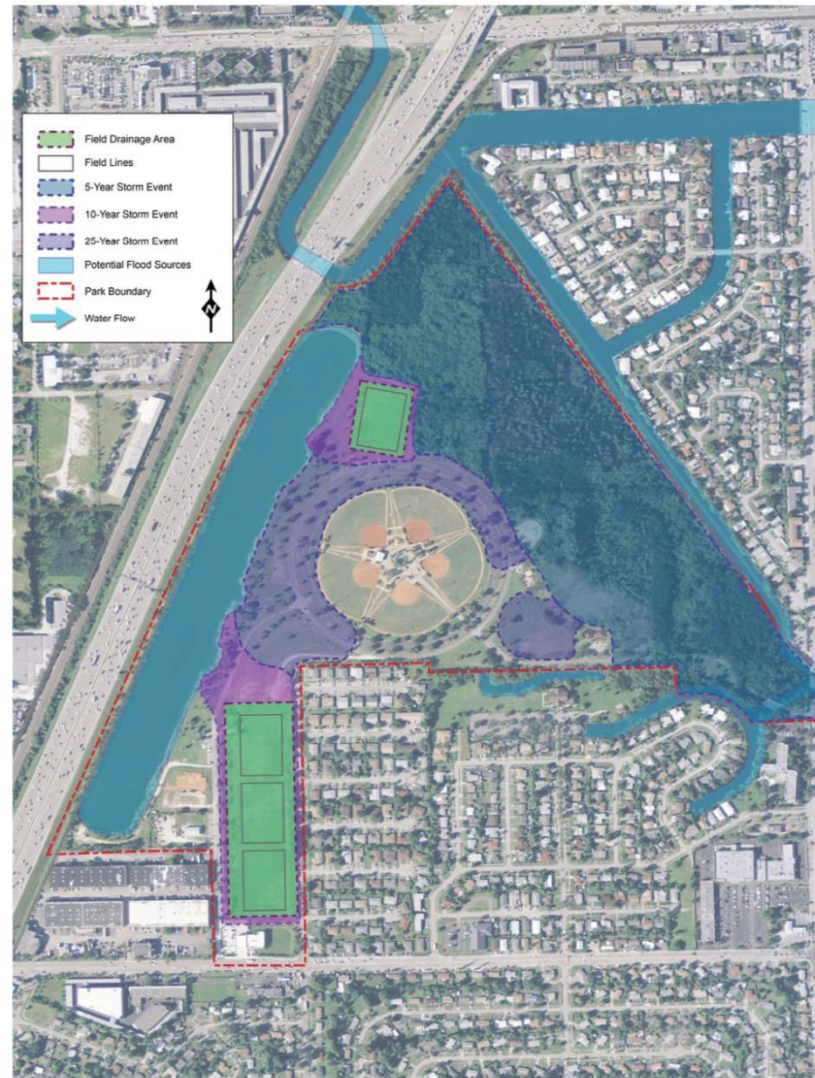


Figure 4-9: Typical Sunken Field Detention Basin

In flood events, water is directed into the sunken fields from multiple directions, transforming the field and its surrounding banks into a detention basin.



Water continues to fill the basin until the capacity is reached. In the case of Mills Pond Park, a series of fields can be treated as tiered basins, where one fills first and then overflows into the next if necessary. Note that the light post are encased concrete pillars.



Once the flood event is over and the basins are stabilized, the fields begin to drain the water, and are restored to their original state, with artificial turf ready for immediate play.



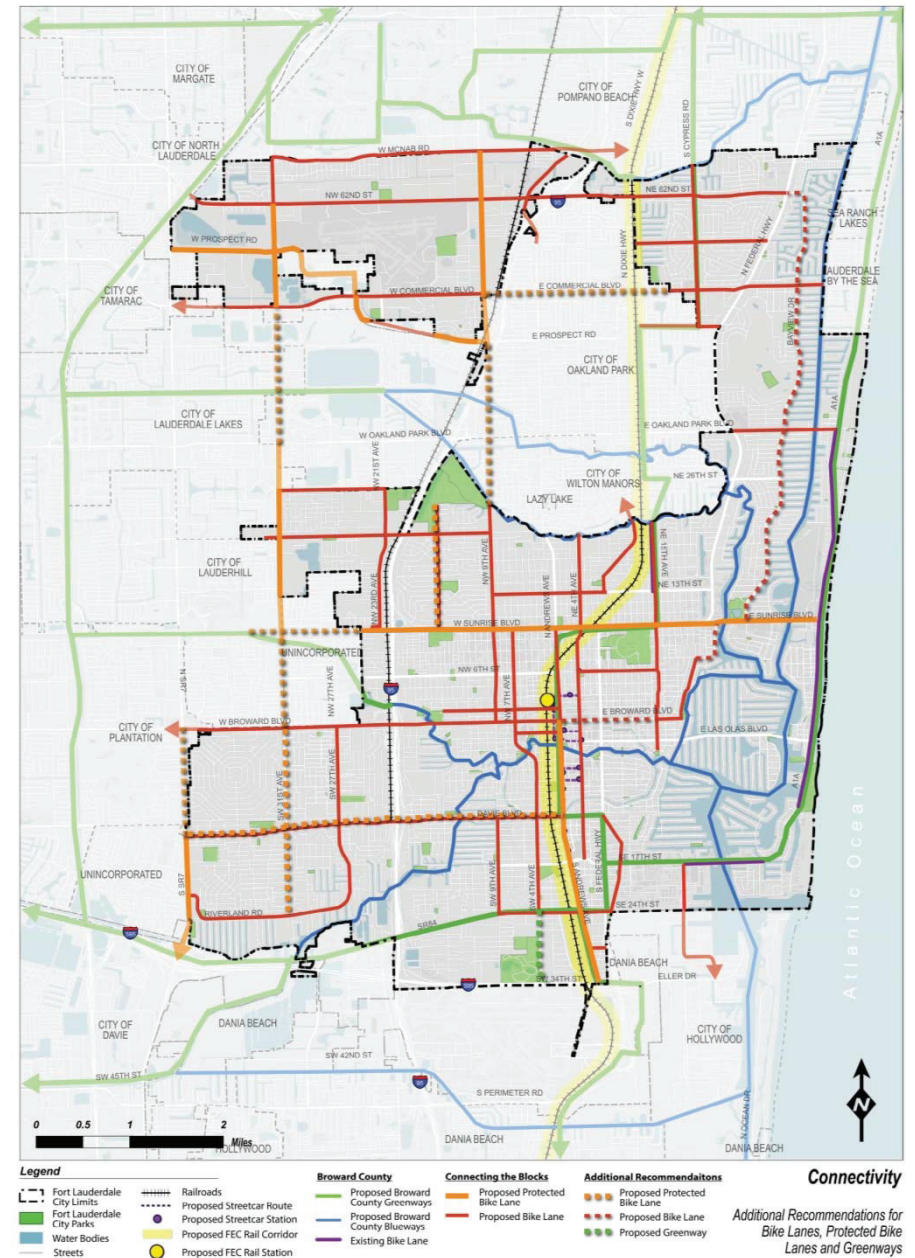
CONNECTIVITY

- Support Implementation of Planning Efforts:
 - Recommended Local Greenways and Bike Facilities
 - Connecting the Blocks Proposed Bike Lanes
 - Proposed Broward County Greenways and Blueways

Separated, Shared-Use Path, Indianapolis Cultural Trail



Bike Lanes on Seabreeze Boulevard in Fort Lauderdale



Here is what is included:

- **Parks and Facilities:** Improvements or additions to existing parks, acquisitions and development of new parks.
- **Recreation and Athletics:** Improvements to fields and courts at existing parks and facilities
- **Community Health:** Improvements to fitness and wellness facilities, indoor facilities or safety enhancements.
- **Art in Public Places:** New public art installations in parks, neighborhoods and gateways
- **Sustainability & Resiliency:** Project in or near parks that contribute to system-wide improvements or city-wide goals
- **Connectivity:** Improvements to ped/bike facilities for better and safety access to parks or on routes to parks and facilities.

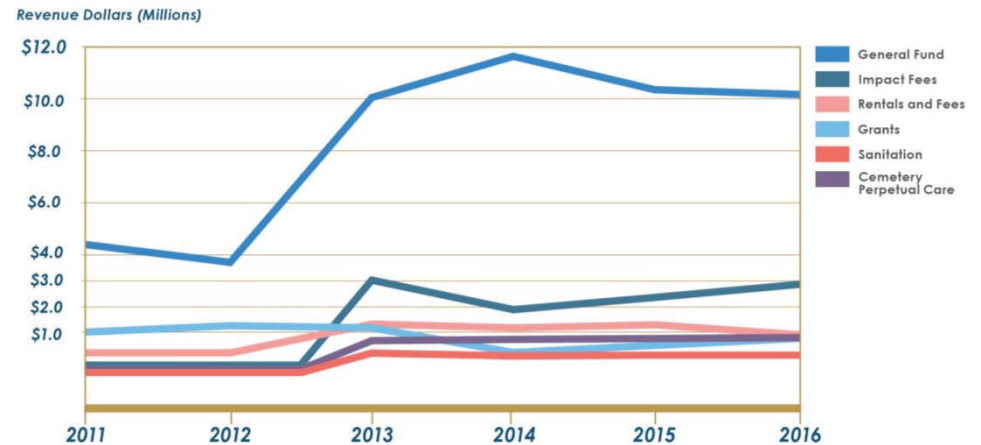
COST ESTIMATE BY VISION ELEMENTS

Vision Elements	
Parks and Facilities	\$131,568,185
Recreation and Athletics	\$11,141,033
Community Health (Including ADA Barrier Removal Plan)	\$16,660,630
Art in Public Places	\$1,100,000
Sustainability and Resiliency	\$8,008,448
Connectivity	\$7,521,420
Total	\$175,999,716



DEPARTMENT REVENUES

- Impact fees have contributed recently, but have been inconsistent source
- City has historically relied upon Broward County and State sources for majority of grant revenue
- Average annual grant revenue has decreased since 2012 peak in 2012

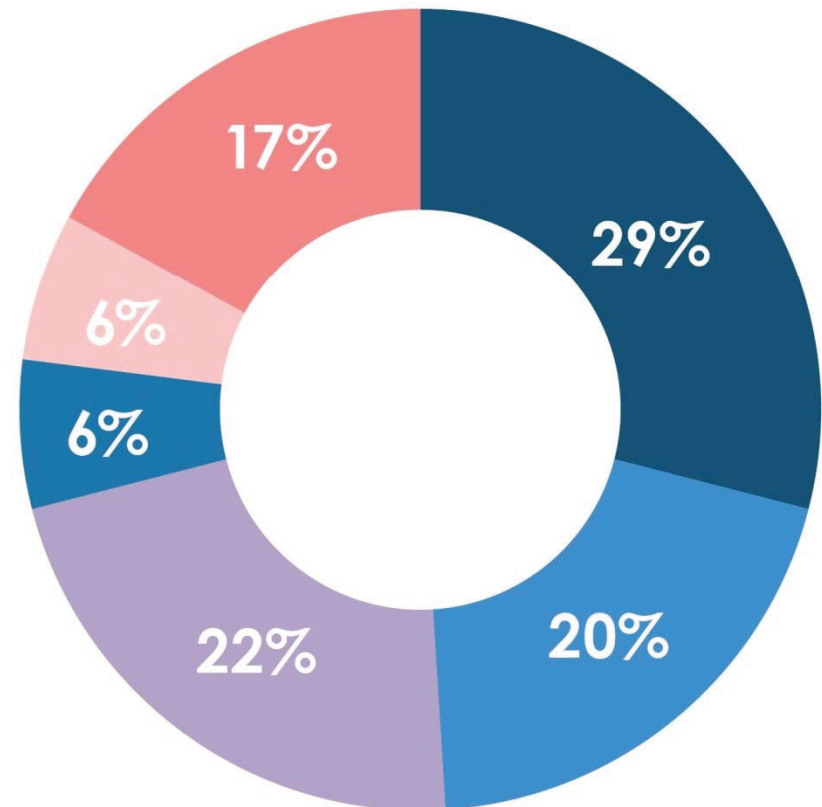
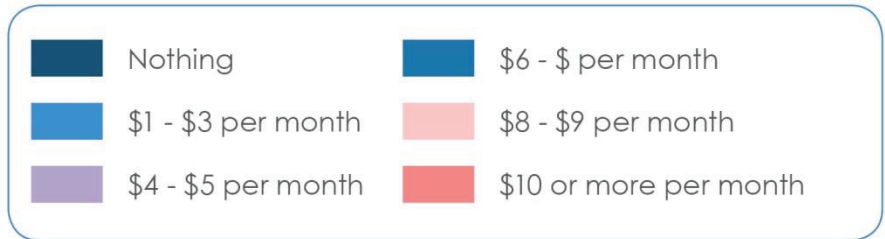


Revenue Source	2011	2012	2013	2014	2015	2016
General Fund (Revenues)	\$4,331,202	\$3,681,338	\$10,052,861	\$11,651,038	\$10,354,544	\$10,195,384
Cemetery Perpetual Care			\$728,192	\$776,911	\$813,244	\$851,772
Sanitation			\$258,620	\$138,802	\$170,364	\$170,364
Park Impact Fee			\$3,054,682	\$1,904,417	\$2,381,234	\$2,878,005
Special Events			\$145,000	\$147,765	\$187,709	\$155,000
Rentals	\$204,361	\$204,361	\$461,122	\$462,235	\$451,824	\$355,122
Program Fees/Pools			\$765,609	\$605,379	\$701,616	\$439,000
Grants	\$1,056,900	\$1,308,306	\$1,222,441	\$226,000	\$524,966	\$713,616

WILLINGNESS TO PAY

'Additional amount households are willing to pay per month to fund improvements to parks and recreation facilities'

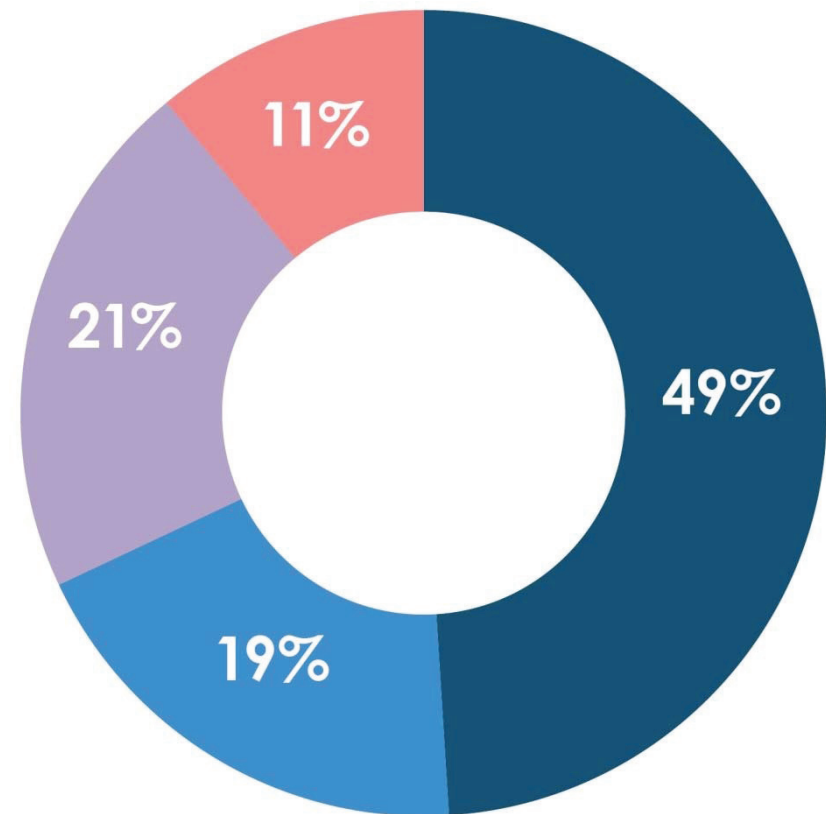
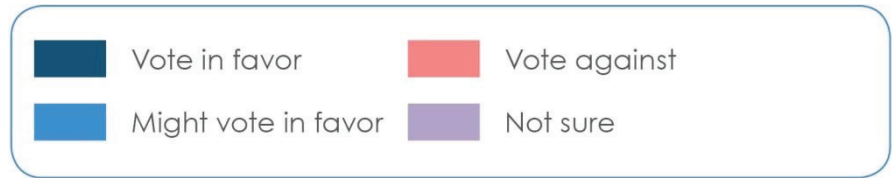
71% of households are willing to pay at least *some amount* to fund improvements



WILLINGNESS TO PAY

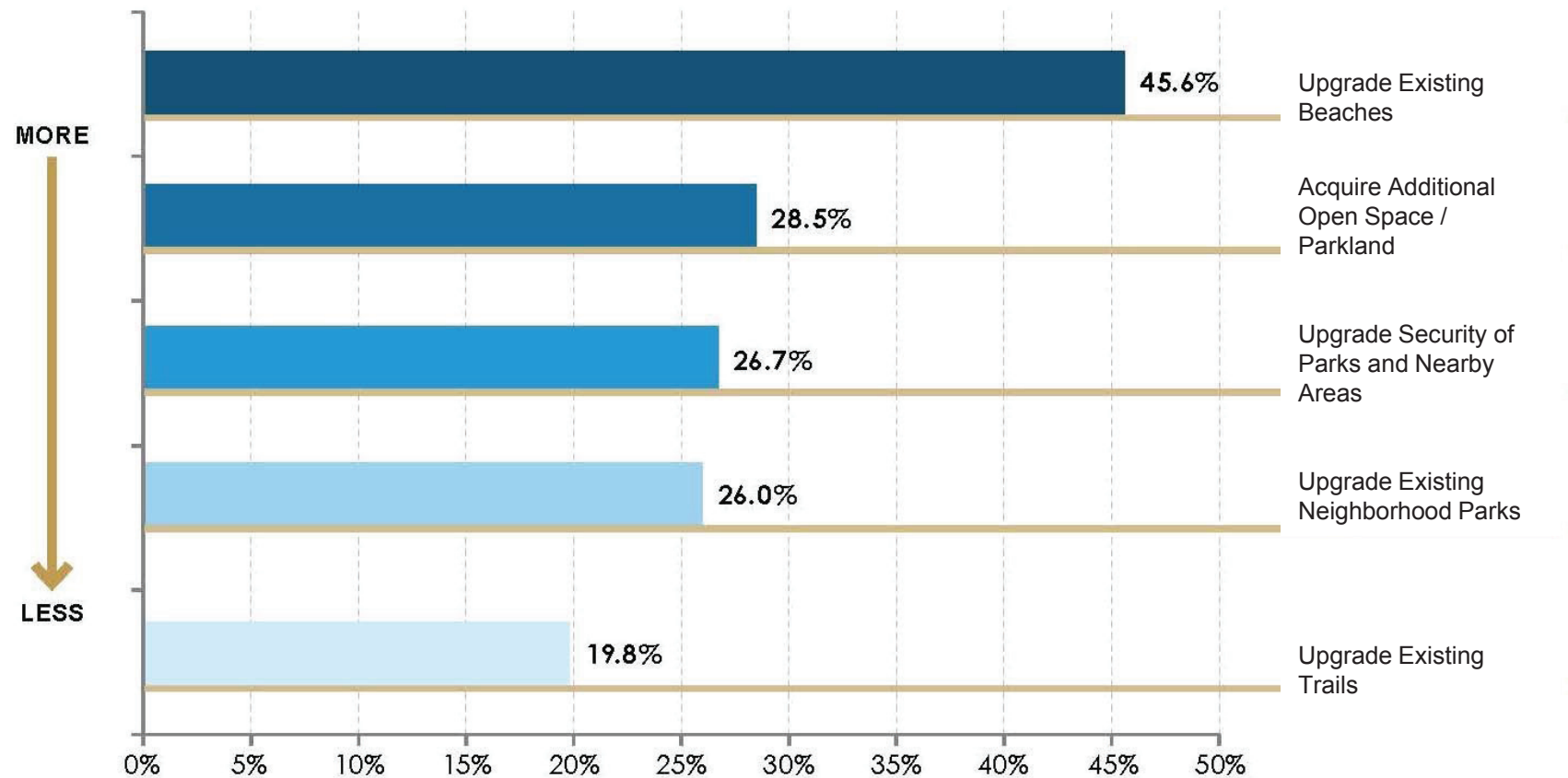
'How households would vote if a voter election was held to improve and develop parks and recreation facilities'

Only 11% of households indicated that they would vote against improvements to parks and recreation facilities



STATISTICAL SURVEY

TOP 5 ACTIONS YOU WOULD MOST LIKELY SUPPORT TO FUND WITH TAX DOLLARS.

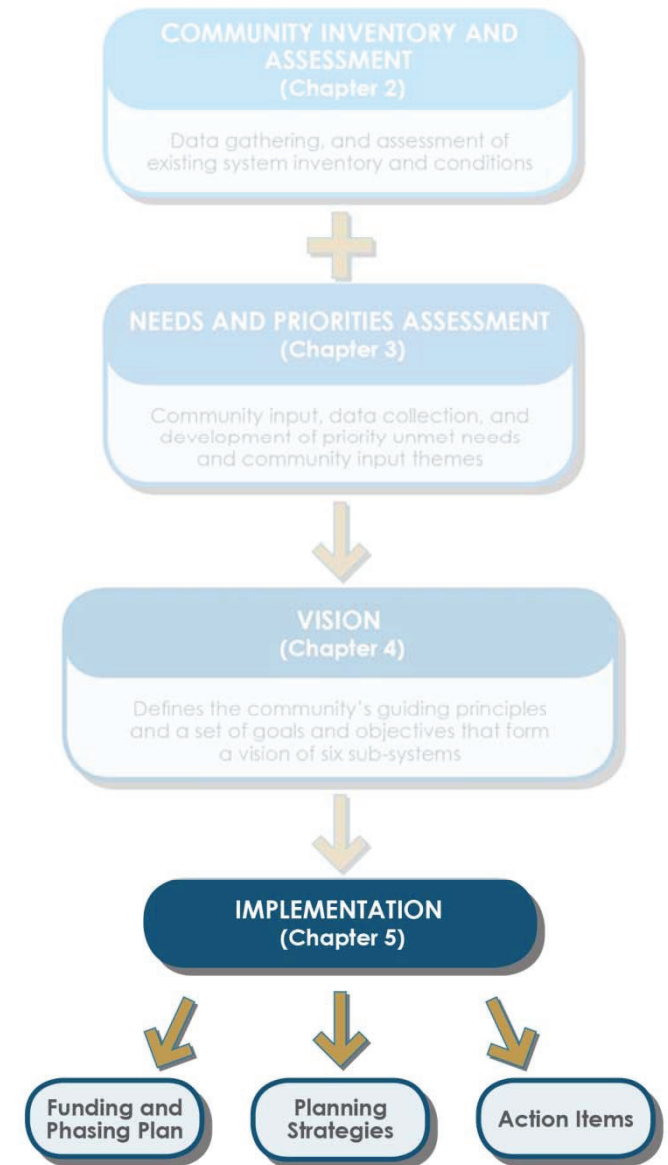


AGENDA

1 OVERVIEW

- RESEARCH AND ANALYSIS
- NEEDS AND PRIORITIES
- FUTURE VISION
- IMPLEMENTATION

2 RECOMMENDATIONS



DEPARTMENT FUNDING RECOMMENDED PHASING PLAN

Capital Improvement Projects: Totals

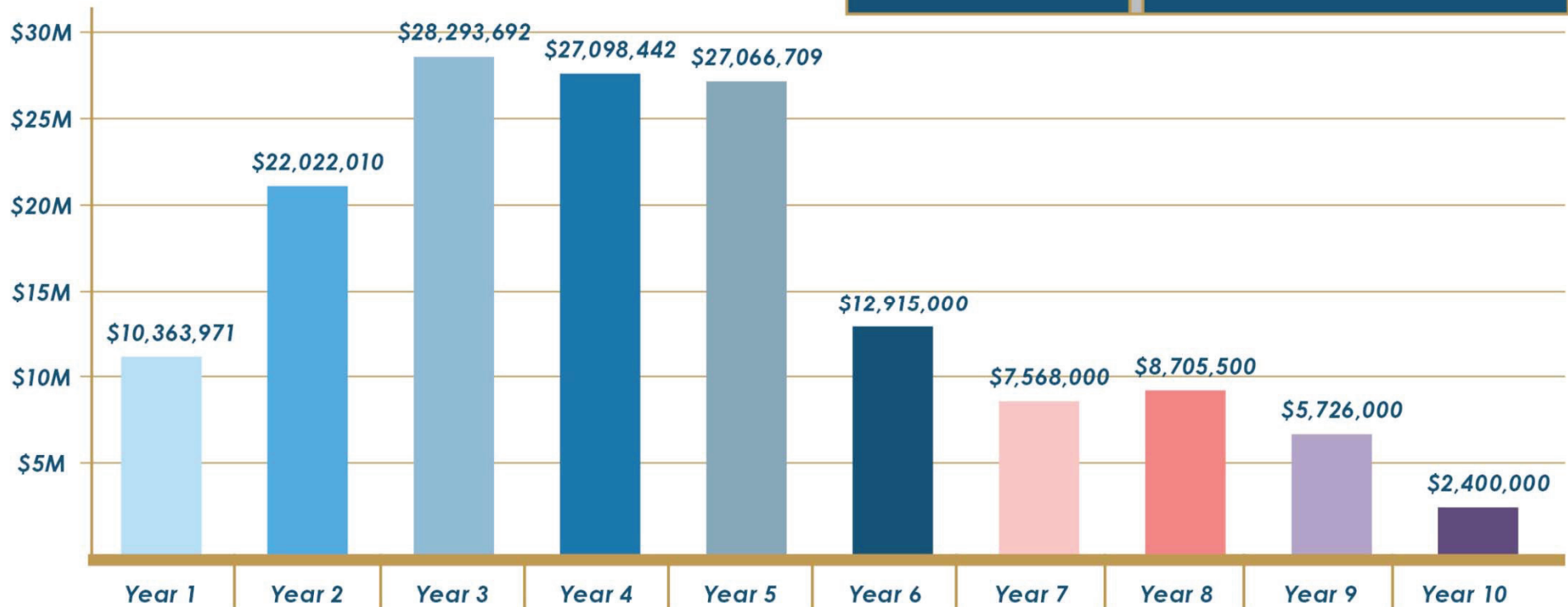
Phase 1: Year 1-5	\$114,844,824
-------------------	---------------

Phase 2: Year 6-10	\$37,314,892
--------------------	--------------

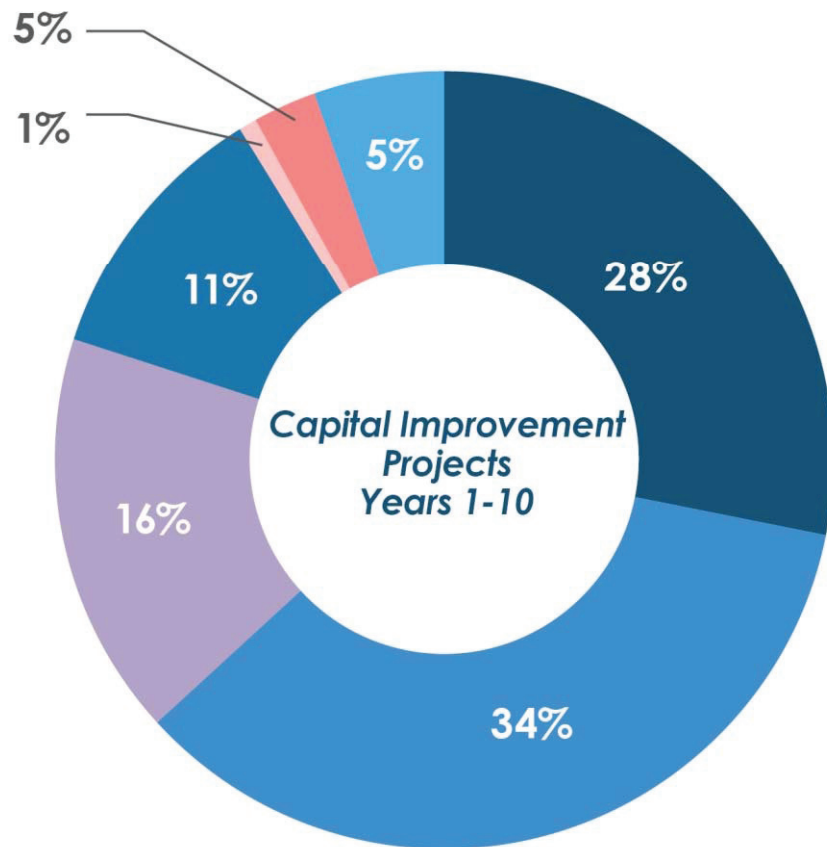
Phase 3: Year 11+	\$23,840,000
-------------------	--------------

Year 1- 10 Total	\$152,159,716
------------------	---------------

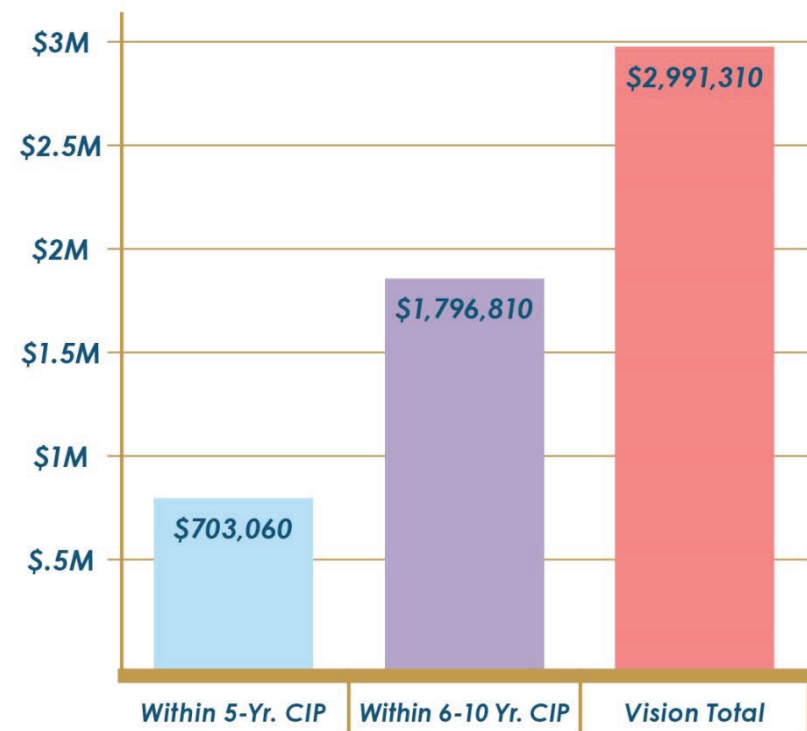
Totals Years 1-11+	\$175,999,716
--------------------	---------------



DEPARTMENT FUNDING RECOMMENDED PHASING PLAN



Total Additional Annual O&M Costs

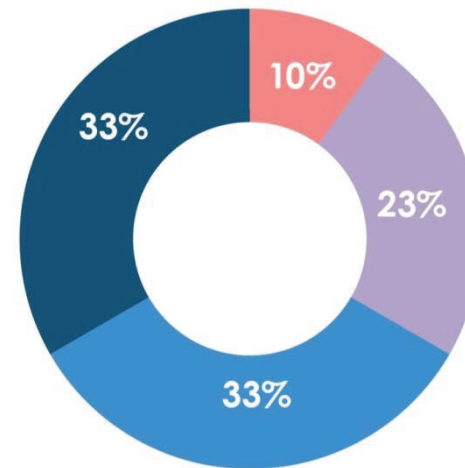


**Note: Costs are in 2016 dollars and have not been escalated.*

1-2 Year Immediate Actions – Capital Funding

ACTION ITEMS

- Establish a **dedicated capital funding source**:
 - Deferred maintenance
 - Upgrade of existing facilities
 - Land acquisition and the development of new park facilities
- Focused approach for **capital improvements reinvestments**;
- **Implement Barrier Removal Plan**;
- Establish a **dedicated funding program for public art**;
- **Secure additional grants.**



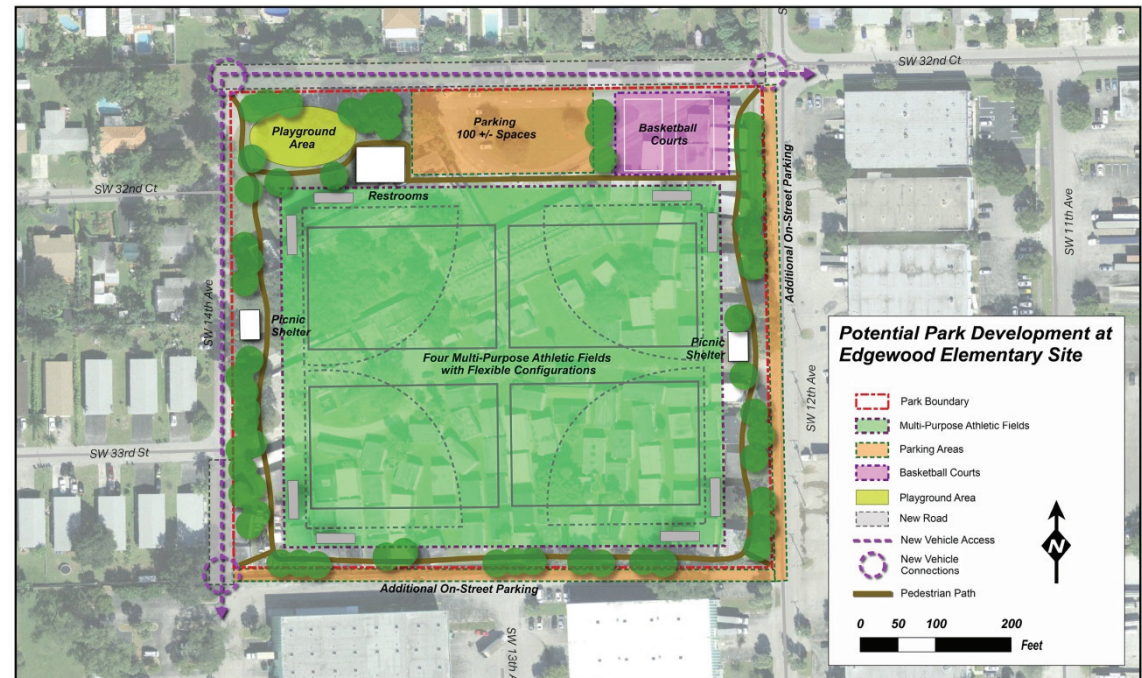
Potential Funding Over Next Ten Years	
Grants (Capital)	\$15,000,000 +/-
Park Impact Fees	\$35,000,000 +/-
Park and Recreation Reinvestment	\$50,000,000 +/-
Parkland Acquisition and Development	\$50,000,000 +/-
Totals	\$150,000,000 +/-



1-2 Year Immediate Actions - Acquisitions

ACTION ITEMS

- Develop a **strategic land acquisition program** to target and secure land acquisition opportunities, particularly in **downtown and urbanizing corridors**;
- **Secure targeted surplus or other City owned properties** and strategically acquire adjacent lands or trade with other properties to amalgamate contiguous land holdings.



1-2 Year Immediate Actions - Policies

- **Integrate System Master Plan** recommendations into the City Comprehensive Plan;
- **Update Level-of-Service (LOS) standards;**
- **Revise land development regulations;**
- Develop a parks-oriented set of **sustainability design guidelines and standards.**

ACTION ITEMS

Park Type	Service Radius (Urban to Suburban)	Mode of Transportation
Core Neighborhood-based Activities and Experiences		
Access to small neighborhood parks and open space	1/4 to 1/2 mile	Walk, bike
Walking and biking trails	1/4 to 1/2 mile	Walk, bike
Access to playgrounds	1/4 to 1/2 mile	Walk, bike

Figure 4-9: Potential Neighborhood Drainage at Riverland Park



1-2 Year Immediate Actions - Initiatives

ACTION ITEMS

Communication

- **Increase marketing** and communication efforts;
- Launch a **mobile-friendly website** and registration system;
- Develop **system-wide branding** and wayfinding program;
- Develop department facility **planning and design guidelines** and standards.



*Distribution of Active
Social Media Techniques*

1-2 Year Immediate Actions - Initiatives

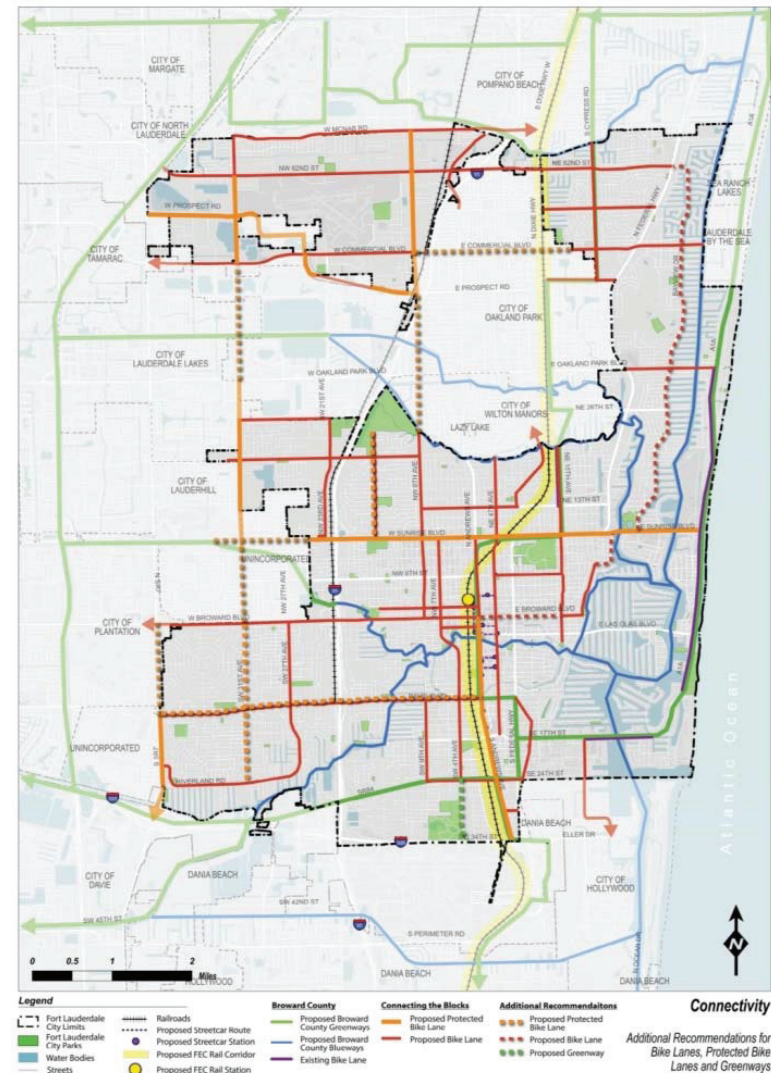
ACTION ITEMS

Safety

- **Update Policies and Procedures Manual** for Parks and Recreation Department;
- Conduct ongoing focus groups and **community outreach** to address **safety concerns**;
- Develop and maintain more **detailed incident reporting**.

Integration

- Incorporate all parks and recreation facilities into the **Neighborhood Mobility Master Plans** and the city-wide **Bicycle and Pedestrian Master Plan**;
- Integrate **sustainable practices** and development of resilient design demonstration projects.



QUESTIONS & COMMENTS



THANK YOU!