

Flagler Village Hotel

CRA SUBMITTAL APRIL 29, 2016
CITY OF FORT LAUDERDALE, FLORIDA
DEPARTMENT OF SUSTAINABLE DEVELOPEMENT



PREPARED FOR
FLAGLER VILLAGE HOTEL
315 NW 1 st. AVENUE
FORT LAUDERDALE, FL

PROJECT DESIGN TEAM

ARCHITECTS	OWNER/DEVELOPER
ADACHE GROUP ARCHITECTS, INC. 590 SOUTH FEDERAL HIGHWAY FT. LAUDERDALE, FLORIDA 33301 PH: (954) 358-4133 FAX: (954) 728-8159 E-MAIL: info@adache.com	315 FLAGLER LP 300 SW 1 ST AVENUE FORT LAUDERDALE, FL 33301
CIVIL ENGINEER	MEP ENGINEER
KEITH & ASSOCIATES 301 E. ATLANTIC AVENUE POMPANO BEACH, FLORIDA 33060 PH: (954) 788-3400 E-MAIL: mgrindam@keith-associates.com	JALRW ENGINEERS 2810 NW 87 AVENUE, SUITE 200 DORAL, FLORIDA 33172 PH: (305) 584-0800 E-MAIL: rhtopaz@jalrw.com
LANDSCAPE ARCHITECT	
ARCHITECTURAL ALLIANCE LANDSCAPE 812 SW 4TH AVENUE FORT LAUDERDALE, FLORIDA 33315 PH: (954) 794-8858 E-MAIL: bsewell@archall.net	
LIST OF DRAWINGS:	
ARCHITECTURE	COVER SHEET
A-0.0.00	AERIAL
A-0.0.04	GROUND FLOOR LANDSCAPE PLAN
A-1.1.06	PERSPECTIVES
A-1.1.07	PERSPECTIVES
A-3.1.01	RENOVATING
A-3.1.02	ZONING/LAND-USE
A-3.1.03	SITE PLAN
A-3.1.04	GROUND FLOOR / SITE PLAN
A-3.1.05	STREET SECTIONS
CP-101	PAVING, GRADING AND DRAINAGE PLAN
A-3.1.06	GROUND FLOOR LANDSCAPE PLAN

adache
group architects

PROJECT DESIGN TEAM:
ARCHITECTS
ADACHE GROUP ARCHITECTS
590 SOUTH FEDERAL HIGHWAY
FT. LAUDERDALE, FLORIDA 33301
PH: (954) 358-4133 FAX: (954) 728-8159
E-MAIL: info@adache.com
STRUCTURAL ENGINEER
MU ENGINEERS
3446 NW 13TH AVE.
CHLAND PARK, FLORIDA 33334
PH: (954) 204-7320
E-MAIL: MINTERWEGGER@MUENGINEERS.COM
CIVIL ENGINEER
KEITH & ASSOCIATES
301 EAST ATLANTIC BLVD.
POMPANO BEACH, FLORIDA 33060
PH: (954) 788-3400 X 103
E-MAIL: TRAC@KEITHASSOCIATES.COM
E-MAIL: MGRINDAM@KEITHASSOCIATES.COM
MEP ENGINEER
JALRW ENGINEERING
2810 NW 87TH AVE, SUITE 200
DORAL, FLORIDA 33172
PH: (305) 584-0800
E-MAIL: rhtopaz@jalrw.com
E-MAIL: 1100000000@jalrw.com
LANDSCAPE ARCHITECT
ARCHITECTURAL ALLIANCE
812 SW 4TH AVE
FORT LAUDERDALE, FLORIDA 33315
PH: (954) 794-8858
E-MAIL: bsewell@archall.net

OWNER: 315 FLAGLER, LP
300 SW 1 ST AVENUE
FORT LAUDERDALE, FL 33301

PROJECT:
FLAGLER VILLAGE HOTEL
315 NW 1ST AVENUE
FORT LAUDERDALE, FL

ISSUED FOR: DRC SUBMITTAL

DATE: -

REVISIONS:

No.	DATE	REMARKS

SEAL:

ALL IDEAS, DESIGNS, ARRANGEMENTS, PLANS AND SPECIFICATIONS INDICATED OR REPRESENTED BY THIS DRAWING ARE OWNED BY, AND ARE THE PROPERTY OF ADACHE GROUP ARCHITECTS AND MEPA, CREATED, DEVELOPED AND PROVIDED FOR THE PROJECT. NO PART OF THESE IDEAS, DESIGNS, ARRANGEMENTS, PLANS AND SPECIFICATIONS SHALL BE USED BY OR FOR ANY OTHER PROJECT, OR FOR ANY OTHER PURPOSE, WITHOUT THE WRITTEN PERMISSION OF ADACHE GROUP ARCHITECTS AND MEPA. ANY VIOLATION OF THESE TERMS SHALL CONSTITUTE A BREACH OF CONTRACT AND ACCEPTANCE OF THESE TERMS SHALL BE DEEMED AS ACCEPTANCE OF THESE TERMS.
ALL RIGHTS RESERVED. © 2015.
FLORIDA LICENSE # AR0007073

SHEET TITLE:
COVER SHEET

DATE: 11/11/15

SCALE: NA

DRAWN BY: BTS

CHECKED BY: JB

JOB NO.: 54.12A

SHEET NO.:

A-0.0.00

adache
group architects

PROJECT DESIGN TEAM:

ARCHITECTS
ADACHE GROUP ARCHITECTS
800 SOUTH FEDERAL HIGHWAY
FT. LAUDERDALE, FLORIDA 33301
TEL (954) 520-1133 FAX (954) 728-4158
E-MAIL: info@adache.com

STRUCTURAL ENGINEER

MJ ENGINEERS
3445 NE 17TH AVE.
OAKLAND PARK, FLORIDA 33334
TEL (954) 324-4720
E-MAIL: MONTERO@MJENGINEERS.COM

CIVIL ENGINEER

KEITH & ASSOCIATES
301 EAST ATLANTIC BLVD.
FORT LAUDERDALE, FLORIDA 33306
TEL (954) 788-5400 X 103
E-MAIL: TRAC@KEITHASSOCIATES.COM

MEP ENGINEER

JALRW ENGINEERING
2810 NW 87TH AVE, SUITE 220
DONALD, FLORIDA 33172
TEL (954) 894-0460
E-MAIL: JALRW@JALRW.COM

LANDSCAPE ARCHITECT

ARCHITECTURAL ALLIANCE
812 SW 4TH AVE.
FORT LAUDERDALE, FLORIDA 33315
TEL (954) 764-8818
E-MAIL: REUSELL@ARCHALLET.NET

OWNER:

315 FLAGLER, LP
300 SW 1ST AVENUE
FORT LAUDERDALE, FL 33301

PROJECT:

FLAGLER VILLAGE HOTEL
315 NW 1st Avenue
FORT LAUDERDALE, FL

ISSUED FOR:

DRC SUBMITTAL

DATE:

-

REVISIONS:

No. DATE REMARKS

-

-

-

-

-

-

-

-

-

-

-

-

-

-

-

-

-

-

-

-

-

-

-

-

-

-

-

-

-

-

-

-

-

-

-

-

-

-

-

-

-

-

-

-

-

-

-

-

-

-

-

-

-

-

-

-

-

-

-

-

-

-

-

-

-

-

-

-

-

-

-

-

-

-

-

-

-

-

-

-

-

-

-

-

-

-

-

-

-

-

-

-

-

-

-

-

-

-

-

-

-

-

-

-

-

-

-

-

-

-

-

-

-

-

-

-

-

-

-

-

-

-

-

-

-

-

-

-

-

-

-

-

-

-

-

-

-

-

-

-

-

-

-

-

-

-

-

-

-

-

-

-

-

-

-

-

-

-

-

-

-

-

-

-

-

-

-

-

-

-

-

-

-

-

-

-

-

-

-

-

-

-

-

-

-

-

-

-

-

-

-

-

-

-

-

-

-

-

-

-

-

-

-

-

-

-

-

-

-

-

-

-

-

-

-

-

-

-

-

-

-

-

-

-

-

-

-

-

-

-

-

-

-

-

-

-

-

-

-

-

-

-

-

-

-

-

-

-

-

-

-

-

-

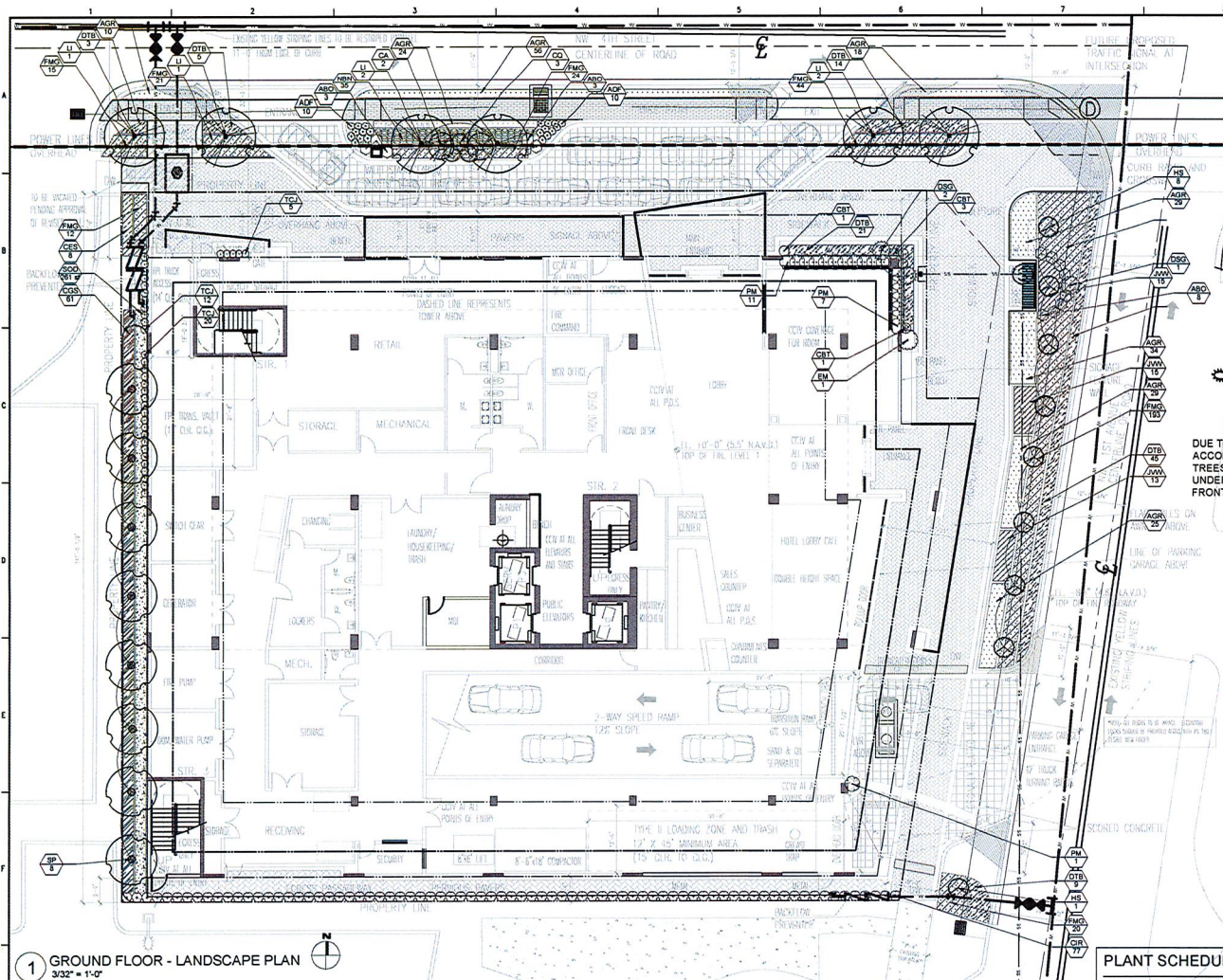
-

-

-

-

-



1 GROUND FLOOR - LANDSCAPE PLAN
3/32" = 1'-0"

NOTES:

- ALL SOD AND LANDSCAPE RECEIVE 100% COVERAGE FROM AN AUTOMATIC IRRIGATION SYSTEM USING AN APPROVED WATER SOURCE.
- IRRIGATION SYSTEM SHALL ALSO BE EQUIPPED WITH RAIN SENSOR.
- SEE SHEET LP-3 FOR LANDSCAPE DETAILS AND NOTES.



KNOW WHAT'S BELOW
ALWAYS CALL 811
BEFORE YOU DIG
It's fast, it's free, it's the law.
Call 811 two business days
before digging

LANDSCAPE CALCULATIONS

FLAGLER VILLAGE HOTEL

LAND USE: D-RAC

ZONING: D-RAC

ITEM	REQUIRED	PROVIDED
TOTAL LANDSCAPE AREA PROVIDED	32,796 SF	62 AC
TOTAL VEHICLE USE AREA PROVIDED		1,235 SF
TOTAL LANDSCAPE AREA REQUIRED (MIN. 20%)	120 SF	643 SF
VIA LANDSCAPE AREA PROVIDED		200 SF
PERIMETER LANDSCAPE AREA		200 SF
INTERIOR LANDSCAPE AREA (30 SF EACH SPACE)		0 SF
0.5 INCHES MINIMUM SODS 1.30 ± 0.31		
VIA TREES (1 TREE PER 1,000 SF OF VIA)		
543 SF / 1,000 SF = 1 TREE	1 TREE	1 TREE
VIA SHRUBS (2 SHRUBS PER 1,000 SF OF VIA)		
543 SF / 1,000 SF = 1.1 = 6 SHRUBS	6 SHRUBS	10+ SHRUBS
NET LOT AREA (1 TREE PER 1,000 SF OF VIA)		
1,035 SF / 1,000 SF = 1 TREE	1 TREE	5 PALMS
STREET TREES		
1 TREE PER 50 LF		
MIN. 40' DIAMETER 150 LF / 40' LF = 4 TREES	4 TREES	6 TREES
MIN. 16' DIAMETER 150 LF / 16' LF = 3 TREES	3 TREES	0 TREES
1 WAY OCS 150 TREES ALLOWED		
TOTAL TREES	8 TREES	10 TREES
NATIVE TREES		
40% MINIMUM NATIVE (8 TREES X 40% = 3.2)	3.2 TREES	3 TREES
ROYAL PALMS = 11		
CHANGING PALMS = 1		

DUE TO WAVE OCS PLANS, WE WILL NOT BE ABLE TO ACCOMMODATE THE NORMAL DOWNTOWN MASTERPLAN STREET TREES ALONG NW 1ST AVE. THUS WE HAVE PROVIDED SMALLER UNDER-STORY ORNAMENTAL TREES ALONG THIS STREET FRONTAGE.

PLANT SCHEDULE FLAGLER VILLAGE HOTEL - GROUND FLOOR

SYMBOL	PLANT NAME	PLANT CODE	PLANT SIZE	PLANT TYPE	PLANT COLOR	PLANT NOTES
1	LAUREL OLEA FRAXINOSA	FO880	14' H x 10' W	SHRUB	GREEN	14' H x 10' W
2	LAUREL OLEA FRAXINOSA	FO880	14' H x 10' W	SHRUB	GREEN	14' H x 10' W
3	LAUREL OLEA FRAXINOSA	FO880	14' H x 10' W	SHRUB	GREEN	14' H x 10' W
4	LAUREL OLEA FRAXINOSA	FO880	14' H x 10' W	SHRUB	GREEN	14' H x 10' W
5	LAUREL OLEA FRAXINOSA	FO880	14' H x 10' W	SHRUB	GREEN	14' H x 10' W
6	LAUREL OLEA FRAXINOSA	FO880	14' H x 10' W	SHRUB	GREEN	14' H x 10' W
7	LAUREL OLEA FRAXINOSA	FO880	14' H x 10' W	SHRUB	GREEN	14' H x 10' W
8	LAUREL OLEA FRAXINOSA	FO880	14' H x 10' W	SHRUB	GREEN	14' H x 10' W
9	LAUREL OLEA FRAXINOSA	FO880	14' H x 10' W	SHRUB	GREEN	14' H x 10' W
10	LAUREL OLEA FRAXINOSA	FO880	14' H x 10' W	SHRUB	GREEN	14' H x 10' W
11	LAUREL OLEA FRAXINOSA	FO880	14' H x 10' W	SHRUB	GREEN	14' H x 10' W
12	LAUREL OLEA FRAXINOSA	FO880	14' H x 10' W	SHRUB	GREEN	14' H x 10' W
13	LAUREL OLEA FRAXINOSA	FO880	14' H x 10' W	SHRUB	GREEN	14' H x 10' W
14	LAUREL OLEA FRAXINOSA	FO880	14' H x 10' W	SHRUB	GREEN	14' H x 10' W
15	LAUREL OLEA FRAXINOSA	FO880	14' H x 10' W	SHRUB	GREEN	14' H x 10' W
16	LAUREL OLEA FRAXINOSA	FO880	14' H x 10' W	SHRUB	GREEN	14' H x 10' W
17	LAUREL OLEA FRAXINOSA	FO880	14' H x 10' W	SHRUB	GREEN	14' H x 10' W
18	LAUREL OLEA FRAXINOSA	FO880	14' H x 10' W	SHRUB	GREEN	14' H x 10' W
19	LAUREL OLEA FRAXINOSA	FO880	14' H x 10' W	SHRUB	GREEN	14' H x 10' W
20	LAUREL OLEA FRAXINOSA	FO880	14' H x 10' W	SHRUB	GREEN	14' H x 10' W
21	LAUREL OLEA FRAXINOSA	FO880	14' H x 10' W	SHRUB	GREEN	14' H x 10' W
22	LAUREL OLEA FRAXINOSA	FO880	14' H x 10' W	SHRUB	GREEN	14' H x 10' W
23	LAUREL OLEA FRAXINOSA	FO880	14' H x 10' W	SHRUB	GREEN	14' H x 10' W
24	LAUREL OLEA FRAXINOSA	FO880	14' H x 10' W	SHRUB	GREEN	14' H x 10' W
25	LAUREL OLEA FRAXINOSA	FO880	14' H x 10' W	SHRUB	GREEN	14' H x 10' W
26	LAUREL OLEA FRAXINOSA	FO880	14' H x 10' W	SHRUB	GREEN	14' H x 10' W
27	LAUREL OLEA FRAXINOSA	FO880	14' H x 10' W	SHRUB	GREEN	14' H x 10' W
28	LAUREL OLEA FRAXINOSA	FO880	14' H x 10' W	SHRUB	GREEN	14' H x 10' W
29	LAUREL OLEA FRAXINOSA	FO880	14' H x 10' W	SHRUB	GREEN	14' H x 10' W
30	LAUREL OLEA FRAXINOSA	FO880	14' H x 10' W	SHRUB	GREEN	14' H x 10' W
31	LAUREL OLEA FRAXINOSA	FO880	14' H x 10' W	SHRUB	GREEN	14' H x 10' W
32	LAUREL OLEA FRAXINOSA	FO880	14' H x 10' W	SHRUB	GREEN	14' H x 10' W
33	LAUREL OLEA FRAXINOSA	FO880	14' H x 10' W	SHRUB	GREEN	14' H x 10' W
34	LAUREL OLEA FRAXINOSA	FO880	14' H x 10' W	SHRUB	GREEN	14' H x 10' W
35	LAUREL OLEA FRAXINOSA	FO880	14' H x 10' W	SHRUB	GREEN	14' H x 10' W
36	LAUREL OLEA FRAXINOSA	FO880	14' H x 10' W	SHRUB	GREEN	14' H x 10' W
37	LAUREL OLEA FRAXINOSA	FO880	14' H x 10' W	SHRUB	GREEN	14' H x 10' W
38	LAUREL OLEA FRAXINOSA	FO880	14' H x 10' W	SHRUB	GREEN	14' H x 10' W
39	LAUREL OLEA FRAXINOSA	FO880	14' H x 10' W	SHRUB	GREEN	14' H x 10' W
40	LAUREL OLEA FRAXINOSA	FO880	14' H x 10' W	SHRUB	GREEN	14' H x 10' W
41	LAUREL OLEA FRAXINOSA	FO880	14' H x 10' W	SHRUB	GREEN	14' H x 10' W
42	LAUREL OLEA FRAXINOSA	FO880	14' H x 10' W	SHRUB	GREEN	14' H x 10' W
43	LAUREL OLEA FRAXINOSA	FO880	14' H x 10' W	SHRUB	GREEN	14' H x 10' W
44	LAUREL OLEA FRAXINOSA	FO880	14' H x 10' W	SHRUB	GREEN	14' H x 10' W
45	LAUREL OLEA FRAXINOSA	FO880	14' H x 10' W	SHRUB	GREEN	14' H x 10' W
46	LAUREL OLEA FRAXINOSA	FO880	14' H x 10' W	SHRUB	GREEN	14' H x 10' W
47	LAUREL OLEA FRAXINOSA	FO880	14' H x 10' W	SHRUB	GREEN	14' H x 10' W
48	LAUREL OLEA FRAXINOSA	FO880	14' H x 10' W	SHRUB	GREEN	14' H x 10' W
49	LAUREL OLEA FRAXINOSA	FO880	14' H x 10' W	SHRUB	GREEN	14' H x 10' W
50	LAUREL OLEA FRAXINOSA	FO880	14' H x 10' W	SHRUB	GREEN	14' H x 10' W
51	LAUREL OLEA FRAXINOSA	FO880	14' H x 10' W	SHRUB	GREEN	14' H x 10' W
52	LAUREL OLEA FRAXINOSA	FO880	14' H x 10' W	SHRUB	GREEN	14' H x 10' W
53	LAUREL OLEA FRAXINOSA	FO880	14' H x 10' W	SHRUB	GREEN	14' H x 10' W
54	LAUREL OLEA FRAXINOSA	FO880	14' H x 10' W	SHRUB	GREEN	14' H x 10' W
55	LAUREL OLEA FRAXINOSA	FO880	14' H x 10' W	SHRUB	GREEN	14' H x 10' W
56	LAUREL OLEA FRAXINOSA	FO880	14' H x 10' W	SHRUB	GREEN	14' H x 10' W
57	LAUREL OLEA FRAXINOSA	FO880	14' H x 10' W	SHRUB	GREEN	14' H x 10' W
58	LAUREL OLEA FRAXINOSA	FO880	14' H x 10' W	SHRUB	GREEN	14' H x 10' W
59	LAUREL OLEA FRAXINOSA	FO880	14' H x 10' W	SHRUB	GREEN	14' H x 10' W
60	LAUREL OLEA FRAXINOSA	FO880	14' H x 10' W	SHRUB	GREEN	14' H x 10' W
61	LAUREL OLEA FRAXINOSA	FO880	14' H x 10' W	SHRUB	GREEN	14' H x 10' W
62	LAUREL OLEA FRAXINOSA	FO880	14' H x 10' W	SHRUB	GREEN	14' H x 10' W
63	LAUREL OLEA FRAXINOSA	FO880	14' H x 10' W	SHRUB	GREEN	14' H x 10' W
64	LAUREL OLEA FRAXINOSA	FO880	14' H x 10' W	SHRUB	GREEN	14' H x 10' W
65	LAUREL OLEA FRAXINOSA	FO880	14' H x 10' W	SHRUB	GREEN	14' H x 10' W
66	LAUREL OLEA FRAXINOSA	FO880	14' H x 10' W	SHRUB	GREEN	14' H x 10' W
67	LAUREL OLEA FRAXINOSA	FO880	14' H x 10' W	SHRUB	GREEN	14' H x 10' W
68	LAUREL OLEA FRAXINOSA	FO880	14' H x 10' W	SHRUB	GREEN	14' H x 10' W
69	LAUREL OLEA FRAXINOSA	FO880	14' H x 10' W	SHRUB	GREEN	14' H x 10' W
70	LAUREL OLEA FRAXINOSA	FO880	14' H x 10' W	SHRUB	GREEN	14' H x 10' W
71	LAUREL OLEA FRAXINOSA	FO880	14' H x 10' W	SHRUB	GREEN	14' H x 10' W
72	LAUREL OLEA FRAXINOSA	FO880	14' H x 10' W	SHRUB	GREEN	14' H x 10' W
73	LAUREL OLEA FRAXINOSA	FO880	14' H x 10' W	SHRUB	GREEN	14' H x 10' W
74	LAUREL OLEA FRAXINOSA	FO880	14' H x 10' W	SHRUB	GREEN	14' H x 10' W
75	LAUREL OLEA FRAXINOSA	FO880	14' H x 10' W	SHRUB	GREEN	14' H x 10' W
76	LAUREL OLEA FRAXINOSA	FO880	14' H x 10' W	SHRUB	GREEN	14' H x 10' W
77	LAUREL OLEA FRAXINOSA	FO880	14' H x 10' W	SHRUB	GREEN	14' H x 10' W
78	LAUREL OLEA FRAXINOSA	FO880	14' H x 10' W	SHRUB	GREEN	14' H x 10' W
79	LAUREL OLEA FRAXINOSA	FO880	14' H x 10' W	SHRUB	GREEN	14' H x 10' W
80	LAUREL OLEA FRAXINOSA	FO880	14' H x 10' W	SHRUB	GREEN	14' H x 10' W
81	LAUREL OLEA FRAXINOSA	FO880	14' H x 10' W	SHRUB	GREEN	14' H x 10' W
82	LAUREL OLEA FRAXINOSA	FO880	14' H x 10' W	SHRUB	GREEN	14' H x 10' W
83	LAUREL OLEA FRAXINOSA	FO880	14' H x 10' W	SHRUB	GREEN	14' H x 10' W
84	LAUREL OLEA FRAXINOSA	FO880	14' H x 10' W	SHRUB	GREEN	14' H x 10' W
85	LAUREL OLEA FRAXINOSA	FO880	14' H x 10' W	SHRUB	GREEN	14' H x 10' W
86	LAUREL OLEA FRAXINOSA	FO880	14' H x 10' W	SHRUB	GREEN	14' H x 10' W
87	LAUREL OLEA FRAXINOSA	FO880	14' H x 10' W	SHRUB	GREEN	14' H x 10' W
88	LAUREL OLEA FRAXINOSA	FO880	14' H x 10' W	SHRUB	GREEN	14' H x 10' W
89	LAUREL OLEA FRAXINOSA	FO880	14' H x 10' W	SHRUB	GREEN	14' H x 10' W
90	LAUREL OLEA FRAXINOSA	FO880	14' H x 10' W	SHRUB	GREEN	14' H x 10' W
91	LAUREL OLEA FRAXINOSA	FO880	14' H x 10' W	SHRUB	GREEN	14' H x 10' W
92	LAUREL OLEA FRAXINOSA	FO880	14' H x 10' W	SHRUB	GREEN	14' H x 10' W
93	LAUREL OLEA FRAXINOSA	FO880	14' H x 10' W	SHRUB	GREEN	14' H x 10' W
94	LAUREL OLEA FRAXINOSA	FO880	14' H x 10' W	SHRUB	GREEN	14' H x 10' W
95	LAUREL OLEA FRAXINOSA	FO880	14' H x 10' W	SHRUB	GREEN	14' H x 10' W
96	LAUREL OLEA FRAXINOSA	FO880	14' H x 10' W	SHRUB	GREEN	14' H x 10' W
97	LAUREL OLEA FRAXINOSA	FO880	14' H x 10' W	SHRUB	GREEN	14' H x 10' W
98	LAUREL OLEA FRAXINOSA	FO880	14' H x 10' W	SHRUB	GREEN	14' H x 10' W
99	LAUREL OLEA FRAXINOSA	FO880	14' H x 10' W	SHRUB	GREEN	14' H x 10' W
100	LAUREL OLEA FRAXINOSA	FO880	14' H x 10' W	SHRUB	GREEN	14' H x 10' W

adache
group architects

PROJECT DESIGN TEAM:

ADACHE GROUP ARCHITECTS

500 SOUTH FEDERAL HIGHWAY

MIAMI BEACH, FLORIDA 33504

PH: (305) 434-1313 FAX: (305) 434-1318

E-MAIL: MGR@ADACHE.COM

STRUCTURAL ENGINEER

MJ ENGINEERS

300 EAST ATLANTIC BLVD.

MIAMI BEACH, FLORIDA 33504

PH: (305) 788-5400 FAX: (305) 788-5401

E-MAIL: MGR@MJENGINEERS.COM

CIVIL ENGINEER

KEITH & ASSOCIATES

301 EAST ATLANTIC BLVD.

MIAMI BEACH, FLORIDA 33504

PH: (305) 788-5400 FAX: (305) 788-5401

E-MAIL: MGR@KEITH-ASSOCIATES.COM

MEP ENGINEER

JALIN ENGINEERING

3010 NW 11TH AVE, SUITE 200

MIAMI, FLORIDA 33137

PH: (305) 884-0800

E-MAIL: MGR@JALIN.COM

LANDSCAPE ARCHITECT

ARCHITECTURAL ALLIANCE LANDSCAPE

812 59TH AVE

PORT LAUDERDALE, FLORIDA 33315

PH: (305) 764-8888

E-MAIL: MGR@ALLIANCE-ARCHITECT.COM

OWNER:

DEV MOTIVANI

ADDRESS LINE 1

CITY, STATE 33316

PROJECT:

FLAGLER VILLAGE HOTEL

NW 11TH STREET / NW 1ST AVE

PORT LAUDERDALE, FL

ISSUED FOR:

DRG SUBMITTAL

DATE:

12/23/2015

REVISIONS:

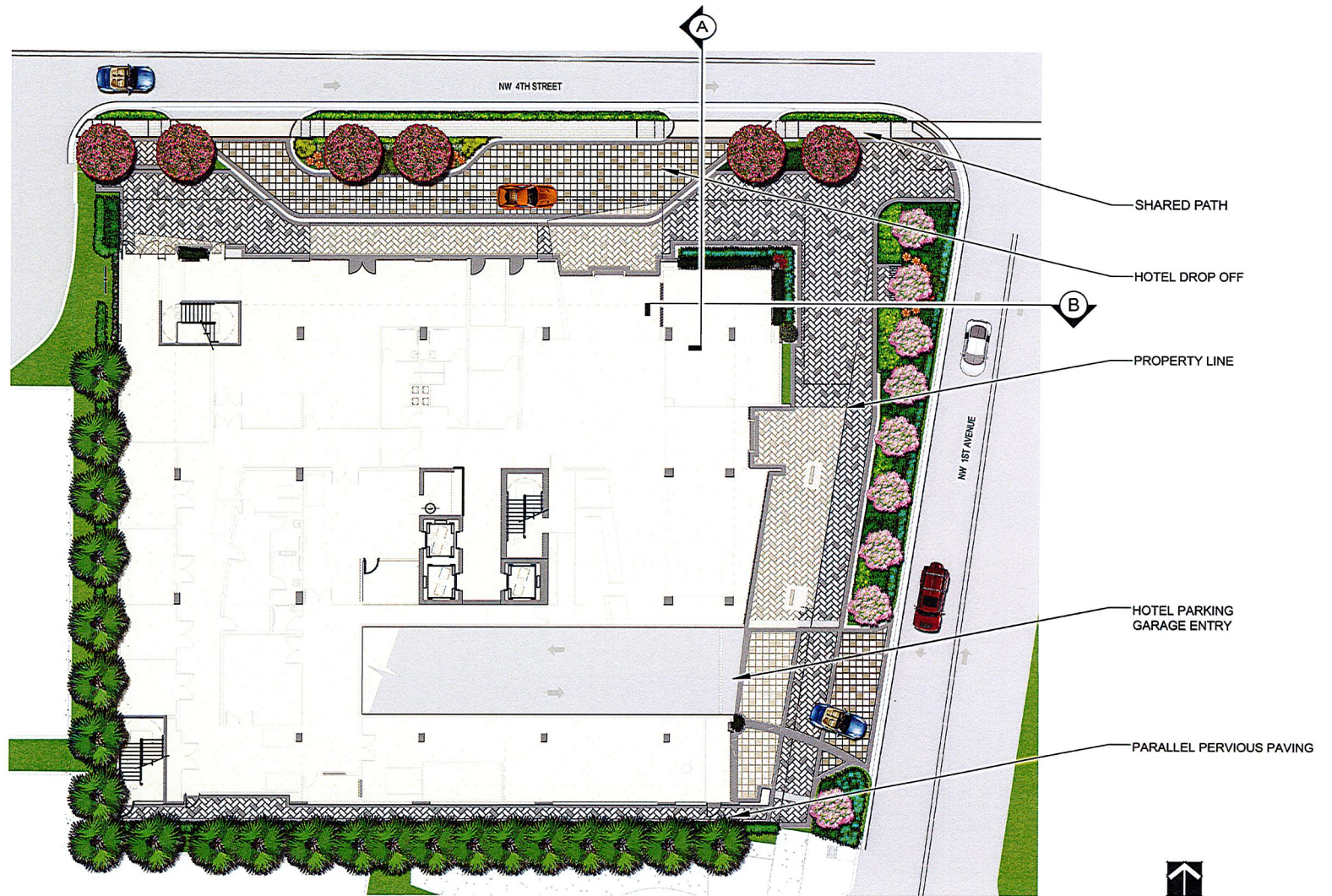
NO. DATE REMARKS

1 2/26/2016 DRG COMMENTS

SEAL:

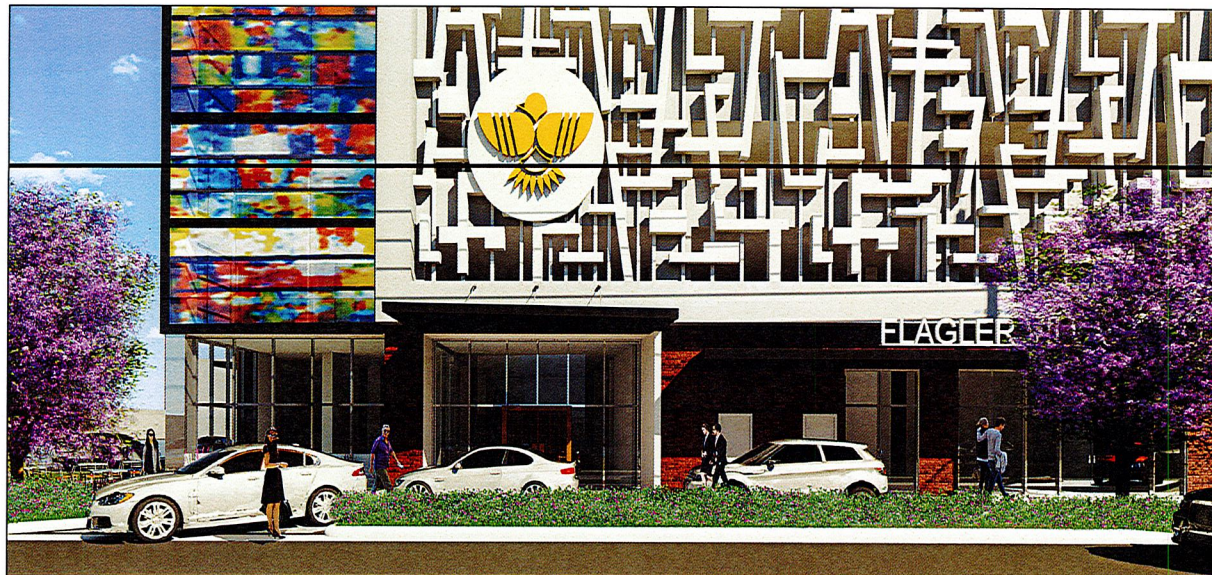
ALL SEALS, DESIGNS, ARRANGEMENTS, PLANS, AND SPECIFICATIONS REQUIRED BY THE BOARD OF ARCHITECTS AND ENGINEERS OF THE STATE OF FLORIDA, AND ANY OTHER AGENCIES, SHALL BE THE PROPERTY OF ADACHE GROUP ARCHITECTS. NO PART OF THESE SEALS, DESIGNS, ARRANGEMENTS, PLANS, OR SPECIFICATIONS SHALL BE REPRODUCED OR TRANSMITTED IN ANY FORM OR BY ANY MEANS, ELECTRONIC OR MECHANICAL, INCLUDING PHOTOCOPYING, RECORDING, OR BY ANY INFORMATION STORAGE AND RETRIEVAL SYSTEM, WITHOUT THE WRITTEN PERMISSION OF ADACHE GROUP ARCHITECTS. ANY VIOLATION OF THESE TERMS SHALL CONSTITUTE A VIOLATION OF THE PROFESSIONAL SEAL ACT, CHAPTER 487, F.S., AND MAY BE SUBJECT TO PROSECUTION. ALL RIGHTS RESERVED. © 2015

FLORIDA LICENSE # AR0007





VIEW AT CORNER OF NW 4TH ST AND NW 1ST AVE LOOKING SOUTH WEST



VIEW ALONG NW 4TH ST LOOKING SOUTH

adache
group architects

PROJECT DESIGN TEAM:

ARCHITECTS
ADACHE GROUP ARCHITECTS
555 SOUTH FEDERAL HIGHWAY
FT. LAUDERDALE, FLORIDA 33305
PH (561) 524-4133 FAX (561) 728-8188
E-MAIL: INFO@ADACHEGROUP.COM

STRUCTURAL
MUEHLINGERS, INC.
3405 NE 12TH AVENUE
OAKLAND PARK, FL 33334
PH (561) 324-4720
E-MAIL: MUEHLINGERS@MUEHLINGERS.COM

CIVIL ENGINEER
KEITH AND ASSOCIATES
201 EAST ATLANTIC BOULEVARD
POMEROY BEACH, FL 33060
PH (561) 788-3005 X103
E-MAIL: TRAC@KEITHANDASSOCIATES.COM
E-MAIL: MGRINBANK@KEITHANDASSOCIATES.COM

MEP ENGINEER
JALRW ENGINEERING
2555 NW 7TH AVENUE, SUITE 220
GONAL, FLORIDA 33172
PH (305) 554-0905
E-MAIL: AHL@JALRW.COM
E-MAIL: HIGGINS@JALRW.COM

LANDSCAPE ARCHITECT
ARCHITECTURAL ALLIANCE
812 2ND 4TH AVENUE
FORT LAUDERDALE, FLORIDA 33315
PH (561) 764-8858
E-MAIL: BEU@ARCHALLIANCE.COM

OWNER:
DEV MOTWANI

PROJECT:
FLAGLER VILLAGE HOTEL
NW 4TH STREET / NW 1ST AVENUE,
FORT LAUDERDALE, FL

SEAL:

ISSUED FOR: Project Status
DATE: Issue Date

REVISIONS:		
No.	DATE	REMARKS

SHEET TITLE:
PERSPECTIVES

ALL IDEAS, DESIGN ARRANGEMENTS, PLANS AND SPECIFICATIONS INDICATED OR REPRESENTED BY THIS DRAWING ARE OWNED BY, AND THE PROPERTY OF, ADACHE GROUP ARCHITECTS, AND WERE CREATED, EVOLVED AND DEVELOPED FOR USE ON, AND IN CONNECTION WITH, THE SPECIFIED PROJECT. NONE OF THESE IDEAS, PLANS, ARRANGEMENTS, AND SPECIFICATIONS SHALL BE USED BY OR DISCLOSED TO ANY PERSON, CORPORATION OR FIRM FOR ANY PURPOSE WHATSOEVER WITHOUT THE WRITTEN PERMISSION OF ADACHE GROUP ARCHITECTS. VISUAL CONTACT WITH THESE PLANS OR SPECIFICATIONS SHALL CONSTITUTE CONCLUSIVE EVIDENCE OF ACCEPTANCE OF THESE RESTRICTIONS. ALL RIGHTS RESERVED. © 2015
FLORIDA LICENSE # AR0007073

DATE: 02/04/16
SCALE:
DRAWN BY: Author
CHECKED BY: Checker
JOB NO.: 54.12A

SHEET NO.:
A-4.1.06



VIEW ALONG NW 1ST AVE LOOKING NORTH WEST



VIEW ALONG NW 4TH ST LOOKING SOUTH WEST



VIEW ALONG NW 4TH ST LOOKING SOUTH EAST



VIEW ALONG NW 1ST AVE LOOKING WEST

adache
group architects

PROJECT DESIGN TEAM:

ARCHITECTS
ADACHE GROUP ARCHITECTS
555 SOUTH FEDERAL HIGHWAY
FT. LAUDERDALE, FLORIDA 33301
PH (561) 525-8133 FAX (561) 738-8159
E-MAIL: INFO@ADACHE.COM

STRUCTURAL

MUEHLINGERS, INC.
3445 NE 17TH AVENUE
OAKLAND PARK, FL 33324
PH (561) 324-4732
CELL 305-681
E-MAIL: muel@muehl.com

CIVIL ENGINEER

KEITH AND ASSOCIATES
30 EAST ATLANTIC BOULEVARD
POMERAY BEACH, FL 33060
PH (561) 788-5400
E-MAIL: TRACSG@KEITH-ASSOCIATES.COM
E-MAIL: MGRINBAW@KEITH-ASSOCIATES.COM

MEP ENGINEER

JALRW ENGINEERING
200 NW 8TH AVENUE, SUITE 220
CORAL, FLORIDA 33172
PH (561) 594-8800
E-MAIL: ARCHITECT@JALRW.COM
E-MAIL: INFO@JALRW.COM

LANDSCAPE ARCHITECT

ARCHITECTURAL ALLIANCE
612 2ND AVENUE
FORT LAUDERDALE, FLORIDA 33315
PH (561) 764-8658
E-MAIL: BEUELL@ARCHALL.NET

OWNER:

DEV MOTWANI

PROJECT:

FLAGLER VILLAGE HOTEL
NW 4TH STREET / NW 1ST AVENUE,
FORT LAUDERDALE, FL

SEAL:

ISSUED FOR: Project Status

DATE: Issue Date

REVISIONS:

No.	DATE	REMARKS

SHEET TITLE:

PERSPECTIVES

ALL IDEAS, DESIGNS, ARRANGEMENTS, PLANS AND SPECIFICATIONS INDICATED OR REPRESENTED BY THIS DRAWING ARE OWNED BY, AND THE PROPERTY OF, ADACHE GROUP ARCHITECTS AND WERE CREATED, DEVELOPED AND DEVELOPED FOR USE ON, AND IN CONNECTION WITH, THE SPECIFIED PROJECT. NONE OF THESE IDEAS, PLANS, ARRANGEMENTS, AND SPECIFICATIONS SHALL BE USED BY OR DISCLOSED TO ANY PERSON, CORPORATION OR FIRM FOR ANY PURPOSE WHATSOEVER WITHOUT THE WRITTEN PERMISSION OF ADACHE GROUP ARCHITECTS.

FLORIDA LICENSE # ARO007073

DATE: 04/29/16

SCALE: Author

CHECKED BY: Checker

JOB NO.: 54.12A

SHEET NO.:

A-4.1.07



adache group architects

PROJECT DESIGN TEAM:

ARCHITECTS
ADACHE GROUP ARCHITECTS
580 SOUTH FEDERAL HIGHWAY
FT. LAUDERDALE, FLORIDA 33301
PH: (954) 326-8133 FAX: (954) 178-8198
E-MAIL: info@adache.com

STRUCTURAL ENGINEER
MU ENGINEERS
3400 NW 17TH AVE.
OAKLAND PARK, FLORIDA 33334
PH: (954) 324-4726
E-MAIL: MUNKERWEGER@MUENGINEERS.COM

CIVIL ENGINEER
KEITH & ASSOCIATES
301 EAST ATLANTIC BLVD.
FORT LAUDERDALE, FLORIDA 33306
PH: (954) 788-3400 X 103
E-MAIL: TRACER@KEITH-ASSOCIATES.COM
E-MAIL: MCKENNA@KEITH-ASSOCIATES.COM

MEP ENGINEER
JALRW ENGINEERING
2810 NW 87TH AVE, SUITE 220
DORAL, FLORIDA 33170
PH: (305) 584-0965
E-MAIL: INFO@JALRW.COM
E-MAIL: HROD@JALRW.COM

LANDSCAPE ARCHITECT
ARCHITECTURAL ALLIANCE
812 SW 4TH AVE.
FORT LAUDERDALE, FLORIDA 33315
PH: (954) 764-8858
E-MAIL: BLUCELL@ARCHALL.NET

OWNER: 315 FLAGLER, LP
300 SW 1 ST AVENUE
FORT LAUDERDALE, FL 33301

PROJECT: FLAGLER VILLAGE HOTEL
315 NW 14 AVENUE
FORT LAUDERDALE, FL

ISSUED FOR: DRC SUBMITTAL
DATE: -

REVISIONS:

No.	DATE	REMARKS
1	02.26.16	DRC RESPONSE

SEAL:

ALL IDEAS, DESIGNS, ARRANGEMENTS, PLANS AND SPECIFICATIONS PROVIDED OR REPRESENTED BY THIS DRAWING ARE OWNED BY AND ARE THE PROPERTY OF ADACHE GROUP ARCHITECTS AND WERE CREATED, EVOLVED AND DEVELOPED FOR USE IN, AND IN CONNECTION WITH, THE SPECIFIC PROJECT. NONE OF THESE IDEAS, PLANS, ARRANGEMENTS AND SPECIFICATIONS SHALL BE USED BY OR FOR ANYONE TO ANY PROJECT OR FOR ANY OTHER PURPOSE WITHOUT THE WRITTEN PERMISSION OF ADACHE GROUP ARCHITECTS. THESE PLANS AND SPECIFICATIONS SHALL CONSTITUTE CONCLUSIVE EVIDENCE OF ALL RIGHTS RESERVED. © 2015.

FLORIDA LICENSE # AR007073

SHEET TITLE:
RENDERINGS

DATE: 11/11/15
SCALE: NA
DRAWN BY: BTS
CHECKED BY: JB
JOB NO.: 54-12A

SHEET NO.:

A-5.1.01

adache
group architects

PROJECT DESIGN TEAM:
ARCHITECTS
ADACHE GROUP ARCHITECTS
2001 FEDERAL HIGHWAY
17, LAUDERDALE, FLORIDA 33301
PH (954) 333-1333 FAX (954) 338-6116
info@adachegroup.com
STRUCTURAL ENGINEER
MU ENGINEERS
406 NE 15TH AVE.
OAKLAND PARK, FLORIDA 33334
PH (954) 333-1333 FAX (954) 338-6116
E-MAIL: WINTERDEED@MUENGINEERS.COM
CIVIL ENGINEER
KEITH & ASSOCIATES
1811 EAST ATLANTIC BLVD.
POMPANO BEACH, FLORIDA 33060
PH (954) 333-1333 FAX (954) 338-6116
E-MAIL: TRACIG@KEITH-ASSOCIATES.COM
M&P ENGINEER
JALRW ENGINEERING
3810 NW 87TH AVE., SUITE 220
MIAMI, FLORIDA 33177
PH (954) 580-6400
E-MAIL: ALFRED@JALRW.COM
E-MAIL: PHOON@JALRW.COM
LANDSCAPE ARCHITECT
ARCHITECTURAL ALLIANCE
1000 N. MIAMI AVE.
FORT LAUDERDALE, FLORIDA 33315
PH (954) 580-4058
E-MAIL: BEUL@ARCHALL.NET

OWNER: 315 FLAGLER, LP
300 SW 1 ST AVENUE
FORT LAUDERDALE, FL 33301

PROJECT:
FLAGLER VILLAGE HOTEL
315 NW 1st AVENUE
FORT LAUDERDALE, FL

ISSUED FOR: DRC SUBMITTAL
DATE: -

[illegible]

SEAL:

ALL IDEAS, DESIGNS, ARRANGEMENTS, PLANS AND SPECIFICATIONS INDICATED OR REPRODUCED BY THIS DRAWING ARE OWNED BY, AND ARE THE PROPERTY OF ADACHI GROUP ARCHITECTS AND WERE CREATED, EVOLVED AND DEVELOPED BY ADACHI GROUP ARCHITECTS IN CONNECTION WITH THE SPECIFIED PROJECT. NONE OF THESE IDEAS, PLANS, ARRANGEMENTS, AND SPECIFICATIONS SHALL BE USED BY OR DISCLOSED TO ANY PERSON, CORPORATION OR ENTITY FOR ANY PURPOSE WHATSOEVER WITHOUT THE WRITTEN PERMISSION OF ADACHI GROUP ARCHITECTS. VISUAL CONTACT WITH THESE PLANS OR SPECIFICATIONS SHALL BE DEEMED CONCLUSIVE EVIDENCE OF ACCEPTANCE OF THESE RESTRICTIONS.

ALL RIGHTS RESERVED. © 2015.

FLORIDA LICENSE # AR0007073

SHEET TITLE:
ZONING / LAND USE

DATE: 11/11/15
SCALE: NA
DRAWN BY: BTS
CHECKED BY: JB
JOB NO.: 54.12A

SHEET NO.: _____

A-0.0.06

FLAGLER VILLAGE HOTEL

FORT LAUDERDALE, FLORIDA

PROJECT DESCRIPTION
PARCEL ID:
ADDRESS: 315 NW 1ST AVENUE, FORT LAUDERDALE, FLORIDA 33301
AN 18 STORY HOTEL & PARKING GARAGE LOCATED ON THE CORNER OF NW 1ST STREET AND NW 4TH AVENUE IN FORT LAUDERDALE, FLORIDA.

SITE CRITERIA AND BUILDING DATA

A. LAND USE DESIGNATION	REGIONAL ACTIVITY CENTER (RAC-C2)
B. ZONING DESIGNATION	122,795 SQUARE FEET = .5233 ACRES
C. SITE AREA	
D. WATER / WASTE WATER SERVICE PROVIDER	CITY OF FORT LAUDERDALE
E. PARKING DATA	SEE TABLES SHT. A-0.0.02
F. BUILDING FOOTPRINT/ LOT COVERAGE	17,796 SF / 22,795 SF = 78 % OF SITE AREA
G. NOT USED	NOT USED
H. BUILDING HEIGHT	18 STORIES
I. NUMBER OF STORIES	18 STORIES
J. SEE NARRATIVES AND ATTACHMENTS FOR ADDITIONAL INFORMATION	
K. CURRENT USE OF PROPERTY AND INTENSITY:	1 STORY BLDG. & PARKING LOT
L. LOADING ZONE:	LESS THAN 15,000 SF SALES OR SERVICE, THEREFORE, NONE REQUIRED - 1 PROVIDED
M. STRUCTURE LENGTH:	152'-3 3/4"
N. OPEN SPACE:	4359 SQUARE FEET
O. VEHICULAR USE AREA:	643 SQUARE FEET
P. LANDSCAPE AREA:	1235 SQUARE FEET
Q. SETBACKS:	SEE TABLES ON SHT. A-0.0.02

LEGAL DESCRIPTION

PARCEL A
Beginning at a point on the East line of Lot 2, Block 3 of the TOWN OF FORT LAUDERDALE, according to the Plat thereof as recorded in Plat Book "9", Page 40, of the Public Records of Miami-Dade County, Florida, which is 50 feet South of the Northwest corner of said Lot 2, running thence South along the East line of said Lot 2, a distance of 100 feet; thence running West parallel to the North line of said Lot 2, a distance of 155 feet; thence running North, parallel to the East line of said Lot 2, a distance of 100 feet; thence East, parallel to the North line of said Lot 2, a distance of 155 feet to the Point of Beginning.

PARCEL B
Beginning at a point on the West line of Lot 2, Block 3 of the TOWN OF FORT LAUDERDALE, according to the Plat thereof as recorded in Plat Book "9", Page 40, of the Public Records of Miami-Dade County, Florida, 50 feet South of the Northwest corner of said Lot 2, thence running South along the West line of said Lot 2, a distance of 100 feet; thence East parallel to the North line of said Lot 2, a distance of 14 feet to the Southwest corner of the first above described parcel; thence running North along the West line of the first above described parcel, a distance of 150 feet to the Northwest corner of the first above described parcel; thence West parallel to the North line of said Lot 2, to the Point of Beginning.

PARCELS A AND B ALSO KNOW AS:
The South 150.00 feet of the North 150.00 feet of Lot 2, Block 3, TOWN OF FORT LAUDERDALE, according to the Plat thereof, as recorded in Plat Book "9", Page 40, of the Public Records of Miami-Dade County, Florida, lying west of the Westway right-of-way for Northwest First Avenue.

ALL OF ABOVE LANDS, situate, lying and being in Broward County, Florida.

PARCEL C
The North Fifty (N 50') feet of Lot Two (2), Block Three (3), LESS road right-of-way for Northwest 4th Street and Northwest 1st Avenue, Block Three (3), TOWN OF FORT LAUDERDALE, according to the Plat thereof, recorded in Plat Book "9", Page 40, of the Public Records of Miami-Dade County, Florida.

Said lands situate, lying and being in the City of Fort Lauderdale, Broward County, Florida and containing 22,795 square feet or 0.5233 acres, more or less.

NOTE:
SETBACKS FROM SURROUNDING BUILDINGS ARE TAKEN FROM GOOGLE EARTH AERIAL VIEWS AND ARE APPROXIMATES. ACTUAL DISTANCES SHOULD BE FIELD VERIFIED.



PROJECT DESIGN TEAM:
ARCHITECTS
ADACHE GROUP ARCHITECTS
580 SOUTH FEDERAL HIGHWAY
FT. LAUDERDALE, FLORIDA 33301
PH: (954) 575-8133 FAX: (954) 728-8189
E-MAIL: info@adache.com

STRUCTURAL ENGINEER
MU ENGINEERS
3406 NE 17TH AVE.
OAKLAND PARK, FLORIDA 33334
PH: (954) 584-6739
E-MAIL: MUNITZER@MUENGINEERS.COM

CIVIL ENGINEER
KEITH & ASSOCIATES
301 EAST ATLANTIC BLVD.
FORT LAUDERDALE, FLORIDA 33306
PH: (954) 768-3400 X 103
E-MAIL: TRAC@KEITHARCHITECTS.COM
E-MAIL: INFO@KEITHARCHITECTS.COM

MEP ENGINEER
JALVR ENGINEERING
2810 NW 87TH AVE, SUITE 225
DODD, FLORIDA 33172
PH: (204) 584-0402
E-MAIL: INFO@JALVR.COM
E-MAIL: INFO@JALVR.COM

LANDSCAPE ARCHITECT
ARCHITECTURAL ALLIANCE
813 SW 4TH AVE.
FORT LAUDERDALE, FLORIDA 33315
PH: (954) 764-8808
E-MAIL: INFO@ARCHALLIANCE.COM

OWNER: 315 FLAGLER, LP
300 SW 1ST AVENUE
FORT LAUDERDALE, FL 33301

PROJECT: FLAGLER VILLAGE HOTEL
315 NW 1ST AVENUE
FORT LAUDERDALE, FL

ISSUED FOR: DRC SUBMITTAL
DATE: -

REVISIONS:

No.	DATE	REMARKS

SEAL:

FLA. SEAL, DESIGN, ARCHITECTURE, PLANS AND SPECIFICATIONS INDICATED ON REPRESENTED BY THIS DRAWING ARE OWNED BY, AND ARE THE PROPERTY OF ADACHE GROUP ARCHITECTS AND ARE NOT TO BE REPRODUCED OR COPIED FOR ANY USE, IN ANY MANNER, WITHOUT THE WRITTEN PERMISSION OF ADACHE GROUP ARCHITECTS. ANY REPRODUCTION OR COPIING OF THIS DRAWING WITHOUT THE WRITTEN PERMISSION OF ADACHE GROUP ARCHITECTS IS STRICTLY PROHIBITED. ANY VIOLATION OF THESE RESTRICTIONS WILL BE PROSECUTED TO THE FULL EXTENT OF THE LAW. NO PART OF THIS DRAWING IS TO BE USED IN ANY MANNER WITHOUT THE WRITTEN PERMISSION OF ADACHE GROUP ARCHITECTS. ANY REPRODUCTION OR COPIING OF THIS DRAWING WITHOUT THE WRITTEN PERMISSION OF ADACHE GROUP ARCHITECTS IS STRICTLY PROHIBITED. ANY VIOLATION OF THESE RESTRICTIONS WILL BE PROSECUTED TO THE FULL EXTENT OF THE LAW.

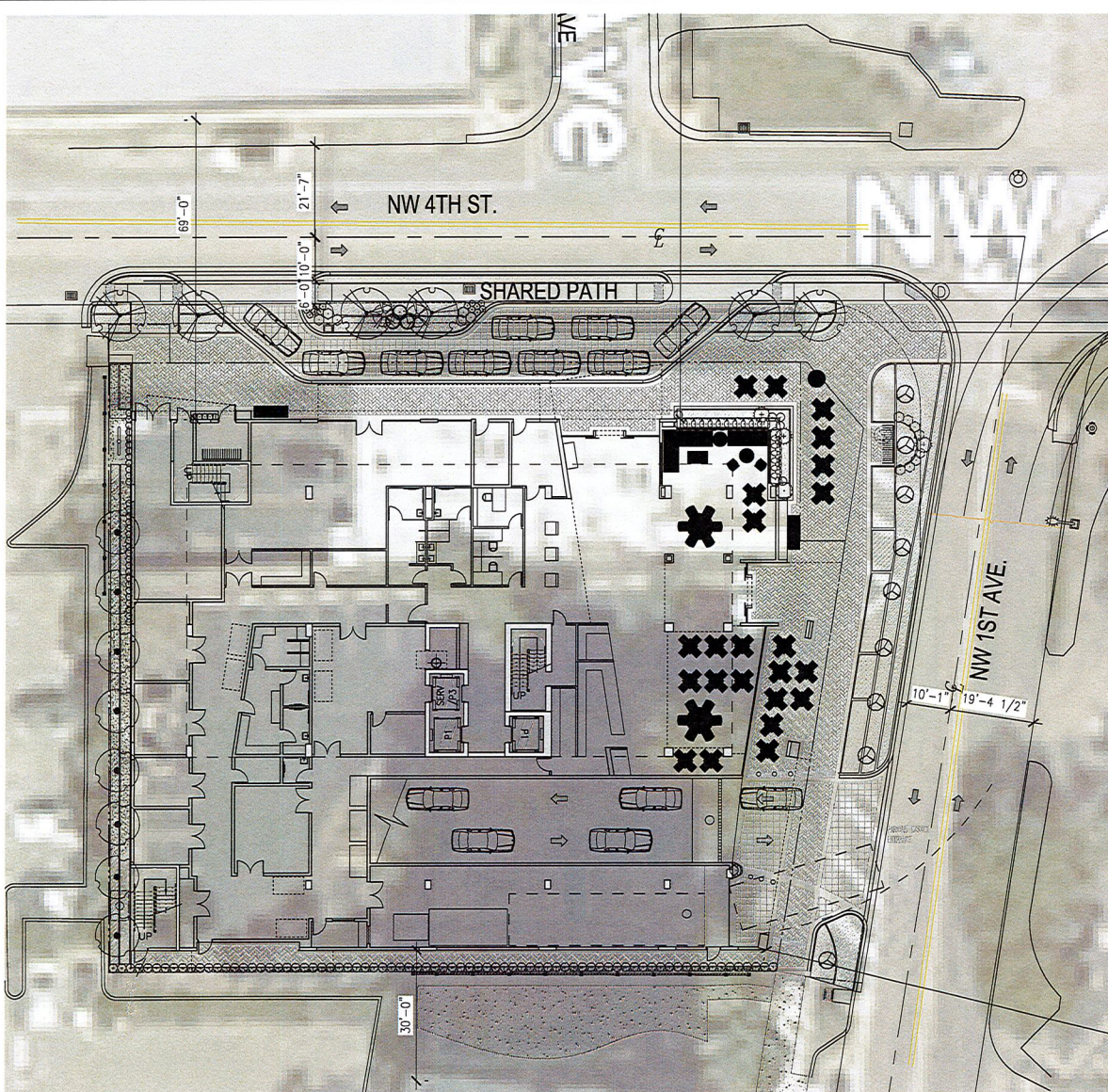
FLORIDA LICENSE # AR0007073

SHEET TITLE:
SITE PLAN

DATE: 11/11/15
SCALE: 1/32" = 1'-0"

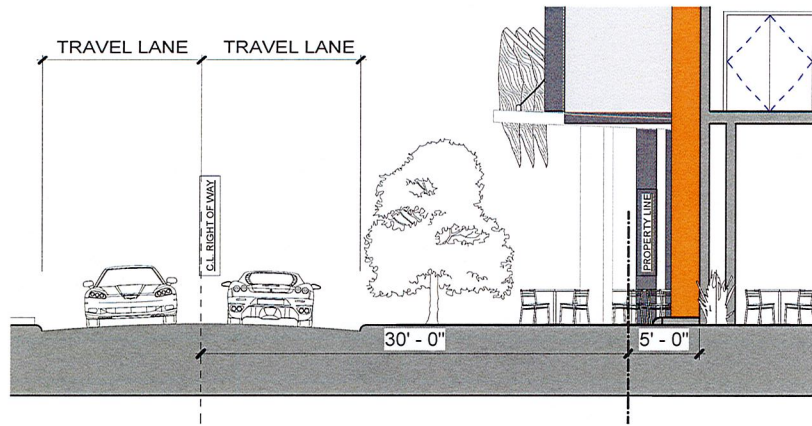
DRAWN BY: JR
CHECKED BY: JB
JOB NO.: 54.12A

SHEET NO.:
A-0.0.05

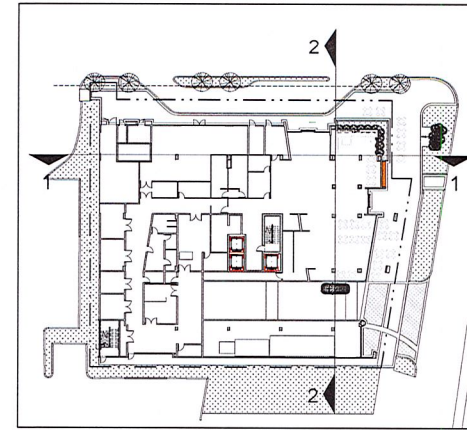


1 SITE PLAN
A-0.0.05 SCALE: NA

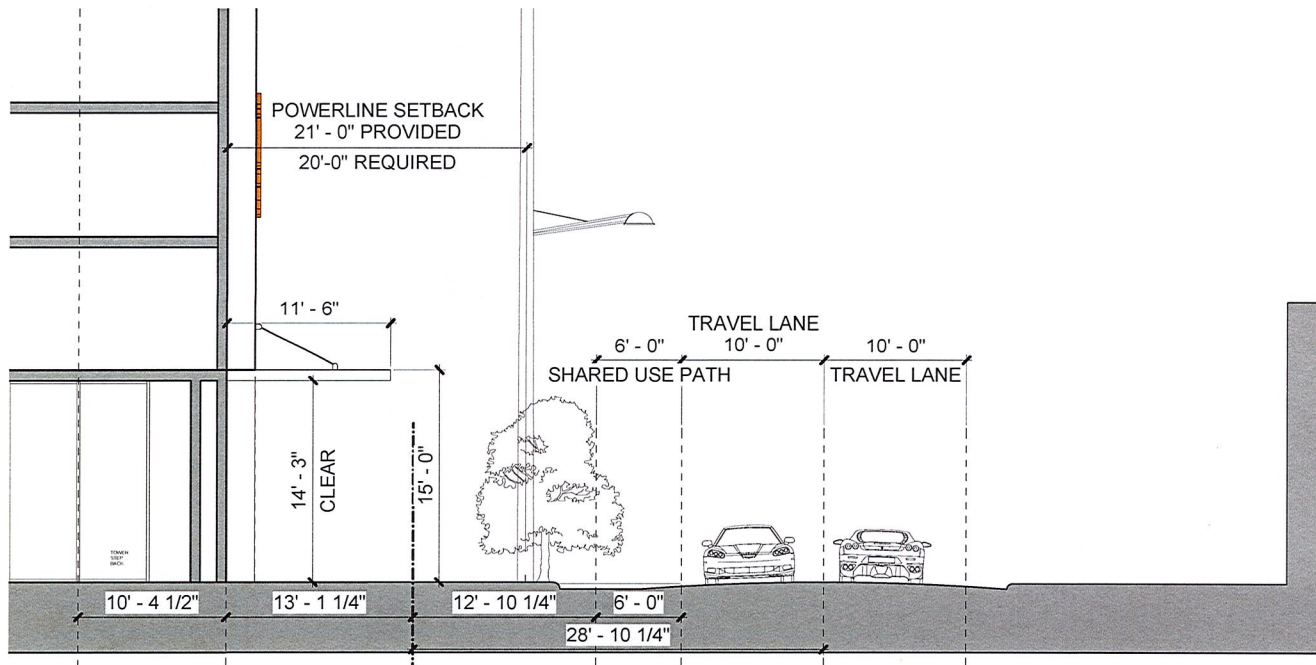




① STREET SECTION OF NW 1ST AVE
1/4" = 1'-0"



③ KEY PLAN
1" = 30'-0"



② STREET SECTION OF NW 4TH STREET
1/4" = 1'-0"

adache
group architects

PROJECT DESIGN TEAM:

ARCHITECTS
ADACHE GROUP ARCHITECTS
582 SOUTH FEDERAL HIGHWAY
FT. LAUDERDALE, FLORIDA 33301
PH (954) 525-8123 FAX (954) 728-8159
E-MAIL: INFO@ADACHE.COM

STRUCTURAL

MULLEN/GRUBBS, INC.
3440 NE 12TH AVENUE
OAKLAND PARK, FL 33204
PH (954) 324-4732
C.O.P. 20445
E-MAIL: mullen@mulengrubs.com

CIVIL ENGINEER

KEITH AND ASSOCIATES
305 EAST ATLANTIC BOULEVARD
POMERANCE BEACH, FL 33606
PH (954) 788-3402 FAX (954) 788-3403
E-MAIL: TRAC@KEITHANDASSOCIATES.COM
E-MAIL: MGRINBANK@KEITHANDASSOCIATES.COM

M.E.P. ENGINEER

JALRW ENGINEERING
2010 NW 17TH AVENUE, SUITE 220
CORAL, FLORIDA 33172
PH (305) 554-0853
E-MAIL: ALOPEZ@JALRW.COM
E-MAIL: HRODRIGUEZ@JALRW.COM

LANDSCAPE ARCHITECT

ARCHITECTURAL ALLIANCE
612 SW 4TH AVENUE
FORT LAUDERDALE, FLORIDA 33315
PH (954) 764-8854
E-MAIL: BEVELL@ARCHALL.NET

OWNER:

DEV MOTWANI

PROJECT:

FLAGLER VILLAGE HOTEL
NW 4TH STREET / NW 1ST AVENUE,
FORT LAUDERDALE, FL

SEAL:

ISSUED FOR: Project Status

DATE: Issue Date

REVISIONS:

No.	DATE	REMARKS

SHEET TITLE:

STREET SECTIONS

ALL IDEAS, DESIGNS, ARRANGEMENTS, PLANS AND SPECIFICATIONS INDICATED OR REPRESENTED BY THIS DRAWING ARE OWNED BY, AND THE PROPERTY OF, ADACHE GROUP ARCHITECTS, AND WERE CREATED, EXCLUDED AND DEVELOPED FOR USE ON, AND IN CONNECTION WITH, THE SPECIFIED PROJECT. NONE OF THESE IDEAS, PLANS, ARRANGEMENTS, AND SPECIFICATIONS SHALL BE USED BY OR DISCLOSED TO ANY PERSON, CORPORATION OR FIRM FOR ANY PURPOSE WHATSOEVER WITHOUT THE WRITTEN PERMISSION OF ADACHE GROUP ARCHITECTS. CONTACT WITH THESE PLANS OR SPECIFICATIONS SHALL CONSTITUTE CONCLUSIVE EVIDENCE OF ACCEPTANCE OF THESE RESTRICTIONS. ALL RIGHTS RESERVED, © 2015
FLORIDA LICENSE # AR0007073

DATE: 11/24/15

SCALE: As indicated

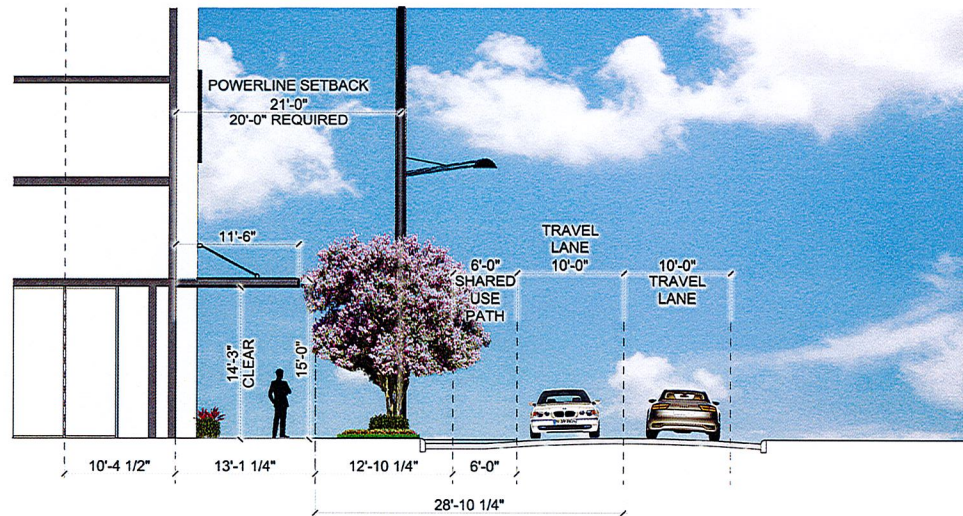
DRAWN BY: Author

CHECKED BY: Checker

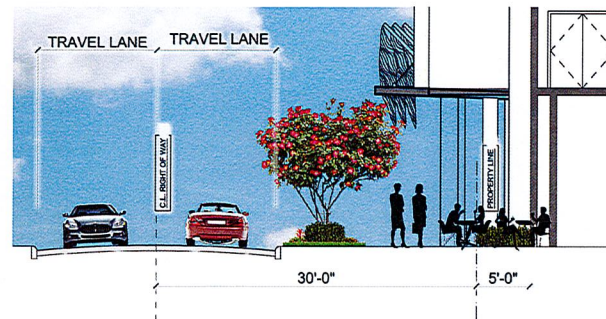
JOB NO.: 54.12A

SHEET NO.:

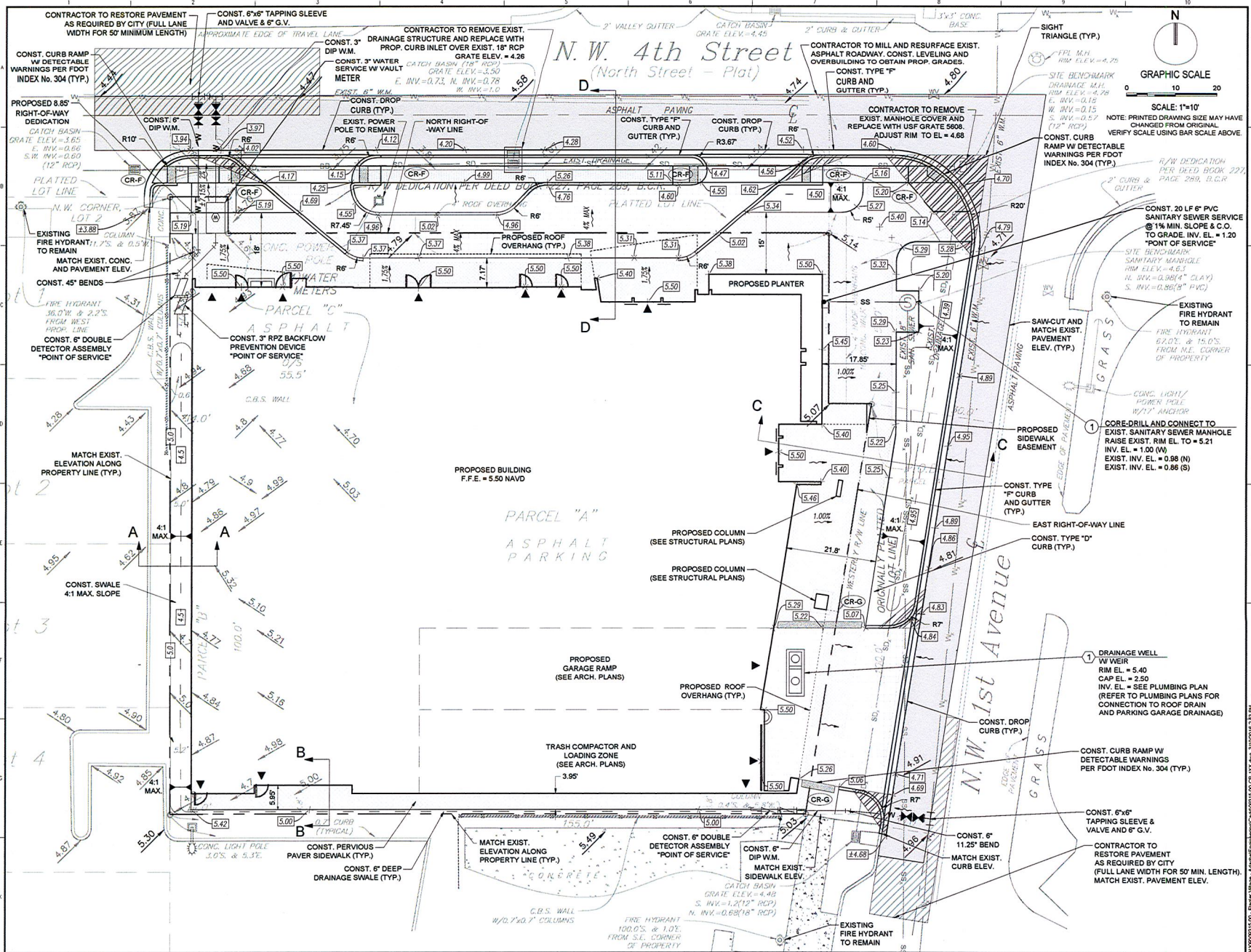
A-3.1.02



SECTION 'A'



SECTION 'B'



adache

group architects

PROJECT DESIGN TEAM:
ARCHITECTS
 ADACHE GROUP ARCHITECTS
 580 SOUTH FEDERAL HIGHWAY
 FT. LAUDERDALE, FLORIDA 33309
 PH (954) 526-1513 FAX (954) 729-1518
 E-MAIL: info@adachegroup.com

STRUCTURAL ENGINEER
 MU ENGINEERS
 3010 N.W. 11TH AVENUE, SUITE 200
 OAKLAND PARK, FLORIDA 33304
 PH (954) 324-4700
 E-MAIL: MURTERWEGER@MUENGINEERS.COM

CIVIL ENGINEER
 KETH & ASSOCIATES
 301 EAST ATLANTIC BLVD.
 FORT BEACH, FLORIDA 33406
 PH (954) 786-5400 X 103
 E-MAIL: MURTERWEGER@KETH-ASSOCIATES.COM

MEP ENGINEER
 JALRY ENGINEERING
 2510 N.W. 8TH AVENUE, SUITE 220
 FORT LAUDERDALE, FLORIDA 33311
 PH (202) 884-0885
 E-MAIL: HRODOLZ@JALRY.COM

OWNER: DEV MOTWANI
 ADDRESS LINE 1
 CITY, STATE 33316

PROJECT: FLAGLER VILLAGE HOTEL
 NW 4TH STREET / NW 1ST AVE,
 FORT LAUDERDALE, FL

ISSUED FOR: DRG SUBMITTAL
DATE: 02/19/16

No.	DATE	REMARKS

SEAL:

JAMES A. THIELE, P.E.
 FLORIDA REG. NO. 35556
 (FOR THE FIRM)

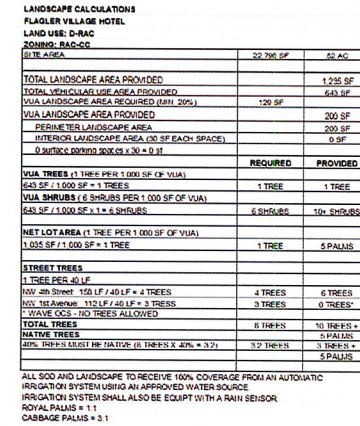
ALL IDEAS, DECISIONS, ARRANGEMENTS, PLANS AND SPECIFICATIONS INDICATED OR REPRESENTED BY THIS DRAWING ARE OWNED BY AND ARE THE PROPERTY OF ADACHE GROUP ARCHITECTS AND WILL BE LOANED TO THE CLIENT FOR THE PROJECT ONLY. NO PART OF THIS DRAWING, INCLUDING ANY INFORMATION, SHALL BE REPRODUCED OR TRANSMITTED IN ANY FORM OR BY ANY MEANS, ELECTRONIC OR MECHANICAL, WITHOUT THE WRITTEN PERMISSION OF ADACHE GROUP ARCHITECTS. ANY UNAUTHORIZED REPRODUCTION OR TRANSMISSION OF THIS DRAWING SHALL CONSTITUTE A VIOLATION OF THE PROFESSIONAL ETHICS OF THE ENGINEER. ALL RIGHTS RESERVED. © 2015.

FLORIDA LICENSE # AR0007073

SHEET TITLE:
 PRELIMINARY ENGINEERING PLAN

DATE: 11/16/2015
SCALE: 1" = 10'
DRAWN BY: P.W.
CHECKED BY: M.G.
JOB NO.: 09315.00

SHEET NO.:
 CP-101



1 GROUND FLOOR - LANDSCAPE PLAN
3/32" = 1'-0"

NOTES:

1. ALL SOD AND LANDSCAPE RECEIVE 100% COVERAGE FROM AN AUTOMATIC IRRIGATION SYSTEM USING AN APPROVED WATER SOURCE.
2. IRRIGATION SYSTEM SHALL ALSO BE EQUIPPED WITH RAIN SENSER.
3. SEE SHEET LP-3 FOR LANDSCAPE DETAILS AND NOTES.

[illegible]

SHEET NO.: _____

LP-1