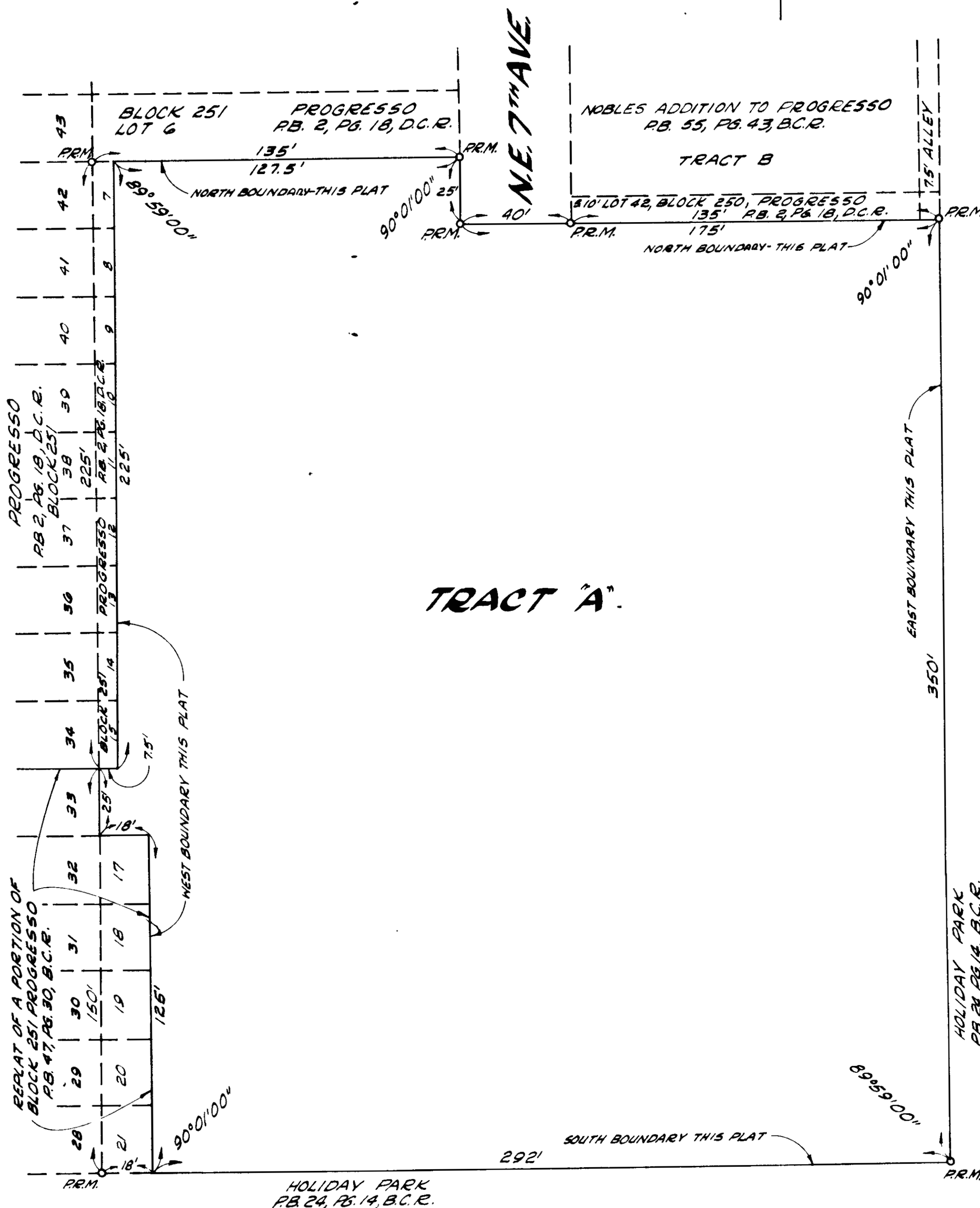


NOTE:
REPLAT ABANDONING
PUBLIC RIGHT-OF-WAY

° P.R.M. INDICATES
PERMANENT REFERENCE
MONUMENT.



SANDY NININGER DRIVE.
190' RIGHT-OF-WAY

"Theater Center"

A REPLAT OF PORTIONS OF BLOCKS 250 AND 251 PROGRESSO, P.B. 2, P.G. 18 AND A PORTION OF REPLAT OF A PORTION OF BLOCK 251 PROGRESSO, P.B. 47, P.G. 30

SECTION 2, TOWNSHIP 50 SOUTH, RANGE 42 EAST
CITY OF FORT LAUDERDALE, BROWARD COUNTY, FLORIDA

OFFICE OF THE CITY ENGINEER
MAY, 1966

30 20 10 0 30 60 90
SCALE IN FEET 1" = 30'

DESCRIPTION

Lots 28 through 41 inclusive in Block 250; and Lots 7 through 15 inclusive, less the West 75 feet thereof, in Block 251; together with all that portion of NE 7th Avenue (formerly 16th Street) lying adjacent to said Lots 28 through 41 inclusive in Block 250, all as shown on the plat "PROGRESSO" and recorded in Plat Book 2, page 18, of the public records of Dade County, Florida.

Also all of Lot 16, and Lots 17 through 21 inclusive less the West 18 feet thereof, of "REPLAT OF A PORTION OF BLOCK 251 PROGRESSO", as recorded in Plat Book 47, page 30 of the public records of Broward County, Florida.

CITY COMMISSION

STATE OF FLORIDA }
COUNTY OF BROWARD }
I HEREBY CERTIFY: That this plat has been approved and accepted by the City Commission of the CITY OF FORT LAUDERDALE, in and by Ordinance No. C-66-54 adopted by said City Commission on the 20th day of Sept., 1966.

IN WITNESS WHEREOF: The said City Commission has caused these presents to be attested by its City Clerk, and the Corporate Seal to be affixed this 26th day of October, 1966.

Marie L. Crow
City Clerk

CITY PLANNING AND ZONING BOARD

STATE OF FLORIDA }
COUNTY OF BROWARD }
I HEREBY CERTIFY: That the Planning and Zoning Board of the CITY OF FORT LAUDERDALE approved and accepted this plat this 20th day of Sept., 1966.

William C. Roberts
Chairman

AREA PLANNING BOARD

THIS IS TO CERTIFY that the Broward County Area Planning Board approved this plat with regard to dedication of right-of-way for trafficways by resolution duly adopted the 7th day of 27, 1966.

John E. Hillman 11/1/66
Secretary

CIRCUIT COURT CLERK'S CERTIFICATES

STATE OF FLORIDA }
COUNTY OF BROWARD }
I HEREBY CERTIFY: That this plat complies with the provisions of an "Act to Regulate the Making of Surveys and Filing for Record of Maps and Plats in the STATE OF FLORIDA", approved by the Governor, June 11th, 1925.

This plat was accepted for record by the board of Commissioners of Broward County, Florida this 1st day of Nov., 1966.

Jack Wheeler, Clerk of the Circuit Court

Deputy Clerk

This instrument filed for record this 3rd day of Nov., 1966, and recorded in Book 63 of Plats at Page 5, record verified.

Jack Wheeler, Clerk of the Circuit Court

Julia Phillips
Deputy Clerk

DEDICATION

STATE OF FLORIDA }
COUNTY OF BROWARD }
KNOW ALL MEN BY THESE PRESENTS: That the CITY OF FORT LAUDERDALE, a municipal corporation of the State of Florida, owner of the lands described and shown as included in this plat, has caused said lands to be subdivided in the manner shown, said subdivision to be known as "THEATER CENTER".

IN WITNESS WHEREOF, said CITY OF FORT LAUDERDALE has caused this Dedication to be signed by its Mayor-Commissioner and its City Manager, and attested by its City Clerk, and the Corporate Seal to be affixed this 26th day of October, 1966.

CITY OF FORT LAUDERDALE

Edmund R. Burry
Mayor-Commissioner
Witness
Marguerite Dorn
Witness
Marguerite Dorn

Edmund R. Burry
Mayor-Commissioner
R. H. Bubbier
City Manager
Marie L. Crow
City Clerk

ACKNOWLEDGMENT

STATE OF FLORIDA }
COUNTY OF BROWARD }
I HEREBY CERTIFY: That on this day personally appeared before me, an officer duly authorized by law to administer oaths and take acknowledgments, Edmund R. Burry, R. H. Bubbier, and Marie L. Crow, known to me to be respectively the Mayor-Commissioner, City Manager and City Clerk of the CITY OF FORT LAUDERDALE, and they acknowledged before me that they executed the foregoing Dedication as said officers of the CITY OF FORT LAUDERDALE.

WITNESS: My hand and official seal at Fort Lauderdale, County of Broward, State of Florida, this 26th day of October, 1966.

February 20, 1967
My Commission Expires

Marguerite Dorn
Notary Public State of Florida

ENGINEER'S CERTIFICATE

STATE OF FLORIDA }
COUNTY OF BROWARD }
I HEREBY CERTIFY: That this plat of "THEATER CENTER" is a true and correct representation of a survey made by us, and that Permanent Reference Monuments have been set as indicated.

Dated at Fort Lauderdale, Florida this 26th day of October, 1966.
McLaughlin Engineering Co.

C. W. McLaughlin
Reg. Engineer No. 1713, Reg. Land
Surveyor No. 167, State of Florida

CITY AND COUNTY ENGINEERS

This plat of "THEATER CENTER" is hereby approved and accepted for record this 26th day of October, 1966.

C. L. Peltum
City Engineer

This plat of "THEATER CENTER" is hereby approved and accepted for record this 4th day of Nov., 1966.

W. J. Davis Jr.
County Engineer