



# PARK AND RECREATION SYSTEM MASTER PLAN COMMISSION CONFERENCE MEETING

CAM 16-0208

Exhibit 2

Page 1 of 22

## 1 OVERVIEW OF THE PROCESS

- RESEARCH AND ANALYSIS
- NEEDS AND PRIORITIES
- FUTURE VISION
- IMPLEMENTATION

## 2 RECOMMENDATIONS

- CAPITAL
- ACQUISITIONS
- POLICY
- INITIATIVES



# PARK SYSTEM PLANNING

## OVERVIEW

- A system approach that includes parks in concert with public spaces, historic and cultural facilities, greenways trails and public art
- Parks system planning is in support of the City's broader vision





## COMMUNITY INVENTORY AND ASSESSMENT

## SYSTEM WIDE SUCCESSES

- High level of maintenance prevalent in most parks, with most making a good impression to visitors;
- Most sites are accessible, clean and free of litter, with a majority providing a feeling of perceived safety

## SYSTEM WIDE OPPORTUNITIES

- Improvements to wayfinding, signage, design standards and overall accessibility;
- Improvement in environmental sustainability, enhancement of environmental awareness and education, and increasing access to ecological features;

## System-wide Ratings

100 - 75 Exceeding Expectations  
 74 - 50 Meeting Expectations  
 49 - 50 Not Meeting Expectations

*Design and Construction*

75

*Effectiveness*

68

*Comfort and Image*

80

*Condition*

77

*Access and Linkages*

69

*Sustainability*

66

# TECHNIQUES

- Community Meetings
- Focus Groups
- Stakeholder Interviews
- Online Public Opinion Survey
- Citizen Opinion and Interest Survey

# PUBLIC INVOLVEMENT

**PARKS & RECREATION**  
City of Fort Lauderdale

Fort Lauderdale Parks and Recreation System Master Plan Survey

22%

1. Which one of the following options best describes you?

☐ Live in the City of Fort Lauderdale ☐ Live and Work in the City of Fort Lauderdale

☐ Work in the City of Fort Lauderdale ☐ Live and Work outside the City of Fort Lauderdale

2. Do you live in a Single-Family Detached or Attached (i.e. townhouse, apartment building, condo) house?

☐ Single Family ☐ Multi Family

3. Which City Commission District do you or your family live in?

☐ District 1 ☐ District 3 ☐ I am not a resident of Fort Lauderdale

☐ District 2 ☐ District 4

4. Do you or your family speak a language other than English at home?

☐ YES





## MAIL / TELEPHONE SURVEY

- Statistically Valid
  - 95 % level of confidence
  - +/- 3.3% margin of error
- 4 zones plus city-wide results
- Random / stratified to match each sample zone's demographics
- Mailed to 4,000 households
- 852 responses by mail/ phone/ website
- Directions in English, Spanish and Creole

Community Interest and Opinion Survey: *Let your voice be heard today!*

The City of Fort Lauderdale would like your input to help determine park and recreation priorities for our community. This survey will take 10-15 minutes to complete. When you are finished, please return your survey in the enclosed postage-paid, return-reply envelope. We appreciate your time.

#### Quality of Parks and Facilities

1. Please indicate if you use the following major parks and recreation facility types provided by the City of Ft. Lauderdale Parks and Recreation Department by circling the YES or NO next to each of the types of parks and recreation facilities. If you do use the type of facility, please rate your overall satisfaction on a scale of 4 to 1 where 4 means "Very Satisfied" and 1 means "Very Dissatisfied."

How satisfied are you with the following City of Ft. Lauderdale parks and recreation services/facilities:	Yes		No		Very Satisfied		Satisfied		Dissatisfied		Very Dissatisfied	
	Yes	No	Yes	No	4	3	2	1	4	3	2	1
(A) Overall quality of beaches	Yes	No	Yes	No	4	3	2	1	4	3	2	1
(B) Overall quality of large community parks	Yes	No	Yes	No	4	3	2	1	4	3	2	1
(C) Overall quality of small neighborhood parks	Yes	No	Yes	No	4	3	2	1	4	3	2	1
(D) Overall quality of soccer fields	Yes	No	Yes	No	4	3	2	1	4	3	2	1
(E) Overall quality of youth baseball/softball fields	Yes	No	Yes	No	4	3	2	1	4	3	2	1
(F) Overall quality of football fields	Yes	No	Yes	No	4	3	2	1	4	3	2	1
(G) Overall quality of adult softball fields	Yes	No	Yes	No	4	3	2	1	4	3	2	1
(H) Overall quality of indoor community centers	Yes	No	Yes	No	4	3	2	1	4	3	2	1
(I) Overall quality of outdoor swimming pools	Yes	No	Yes	No	4	3	2	1	4	3	2	1
(J) Overall quality of City Marinas (Coastal Landings)	Yes	No	Yes	No	4	3	2	1	4	3	2	1
(K) Overall quality of Tennis Centers	Yes	No	Yes	No	4	3	2	1	4	3	2	1
(L) Overall quality of splash pads	Yes	No	Yes	No	4	3	2	1	4	3	2	1
(M) Overall quality Ft. Lauderdale Aquatic Complex	Yes	No	Yes	No	4	3	2	1	4	3	2	1
(N) Overall quality of dog parks	Yes	No	Yes	No	4	3	2	1	4	3	2	1

2. Which THREE of these parks and recreation facilities do you think should receive the MOST ATTENTION from the City of Ft. Lauderdale over the next TWO years? [Please indicate your 1<sup>st</sup>, 2<sup>nd</sup>, and 3<sup>rd</sup> choices by writing the letters from Question #1 above in the spaces below.]

1<sup>st</sup> 2<sup>nd</sup> 3<sup>rd</sup>

10. Please indicate if YOU or any member of recreational facilities listed below by circling:

If YES, please rate ALL the following parks and recreation facilities on a scale of 5 to 1, with 5 being "Excellent" and 1 being "Very Poor."

Type of Facility	Yes	No	5	4	3	2	1
A. Soccer fields	Yes	No	5	4	3	2	1
B. Youth baseball and softball fields	Yes	No	5	4	3	2	1
C. Football fields	Yes	No	5	4	3	2	1
D. Outdoor tennis courts	Yes	No	5	4	3	2	1
E. Outdoor cricket fields	Yes	No	5	4	3	2	1
F. Adult softball fields	Yes	No	5	4	3	2	1
G. Off-leash dog park	Yes	No	5	4	3	2	1
H. Outdoor swimming pools/water parks	Yes	No	5	4	3	2	1
I. Playground equipment	Yes	No	5	4	3	2	1
J. Outdoor basketball courts	Yes	No	5	4	3	2	1
K. Disc golf	Yes	No	5	4	3	2	1
L. Skateboarding park	Yes	No	5	4	3	2	1
M. Walking and biking trails	Yes	No	5	4	3	2	1
N. Nature center and trails	Yes	No	5	4	3	2	1
O. Small neighborhood parks	Yes	No	5	4	3	2	1
P. Large community parks	Yes	No	5	4	3	2	1
Q. Beach access parks	Yes	No	5	4	3	2	1
R. Canoe, kayak, and small boat water access	Yes	No	5	4	3	2	1
S. Outdoor amphitheater/bandstand	Yes	No	5	4	3	2	1
T. Indoor running/walking track	Yes	No	5	4	3	2	1
U. Indoor swimming pools/lap pool	Yes	No	5	4	3	2	1
V. Indoor tennis courts	Yes	No	5	4	3	2	1
W. Indoor fitness and exercise facilities	Yes	No	5	4	3	2	1
X. Indoor basketball/volleyball courts	Yes	No	5	4	3	2	1
Y. Other:	Yes	No	5	4	3	2	1

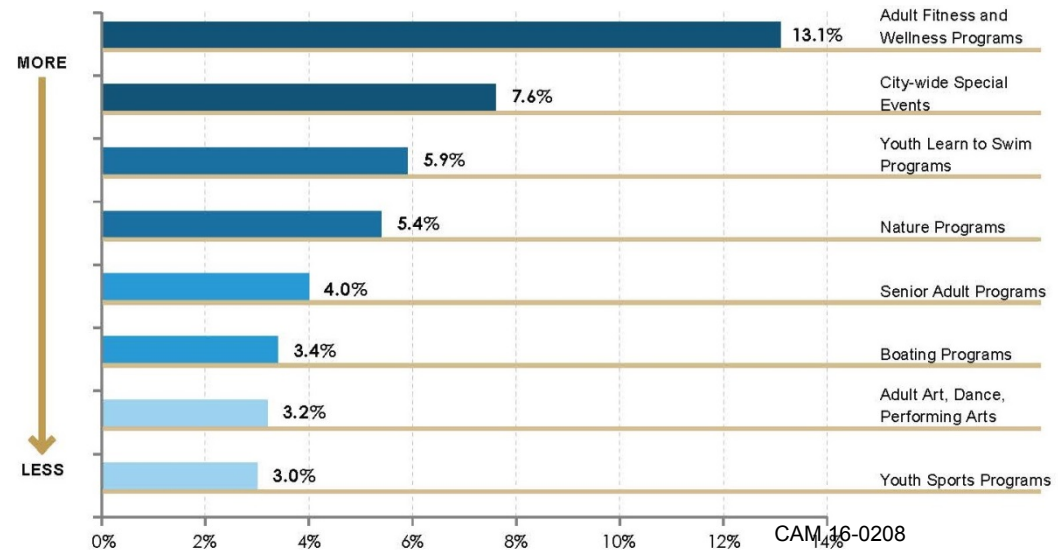
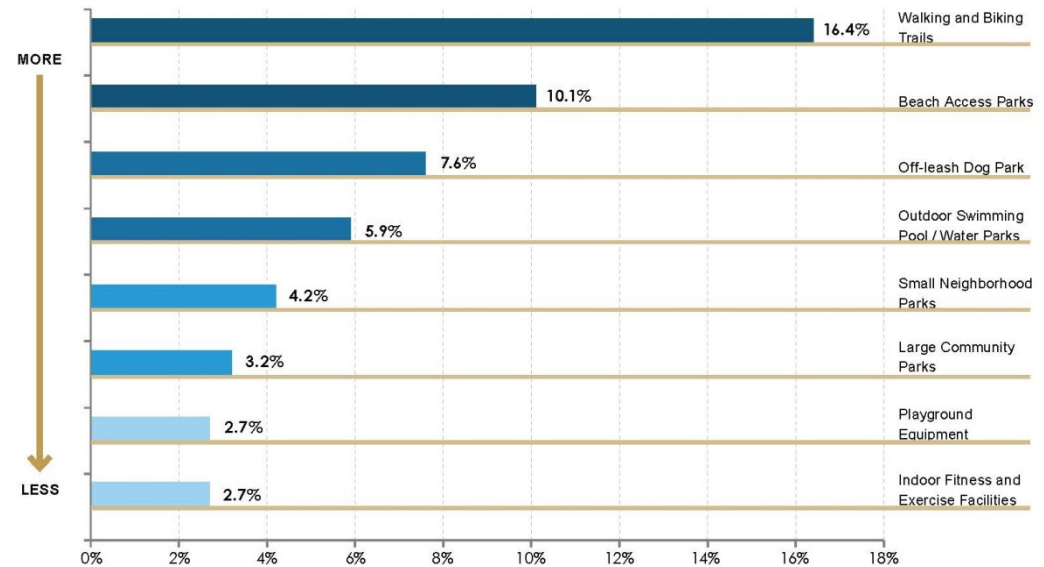
11. Which FOUR of the facilities from the list in Question #10 are MOST IMPORTANT to your household? [Using the letters in the left hand column of Question #10 above, please write in the letters below for your 1<sup>st</sup>, 2<sup>nd</sup>, 3<sup>rd</sup>, and 4<sup>th</sup> choices, or circle "NONE".]

1<sup>st</sup> 2<sup>nd</sup> 3<sup>rd</sup> 4<sup>th</sup> NONE

## TOP 8 MOST IMPORTANT PARK/RECREATION FACILITIES TO YOUR HOUSEHOLD?

## TOP 8 MOST IMPORTANT RECREATION PROGRAMS TO YOUR HOUSEHOLD?

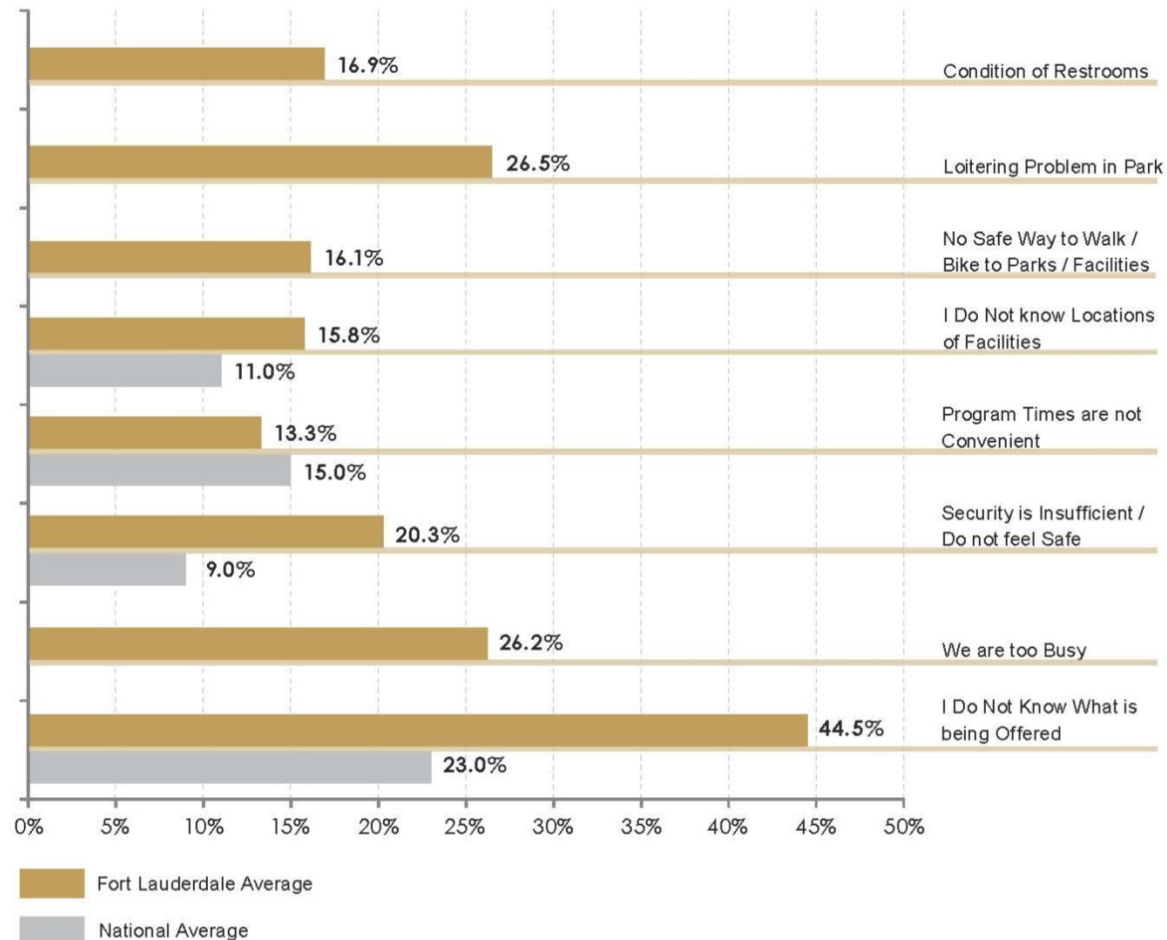
## STATISTICAL SURVEY





## STATISTICAL SURVEY

# TOP 8 REASONS THAT PREVENT YOU OR MEMBERS OF YOUR HOUSEHOLD FROM USING PARKS OR PARTICIPATING MORE OFTEN.



**Table 3-32: Needs Assessment Summary**

- = Indicates Highest Need  
 ● = Indicates Need

		Needs Assessment Techniques									
		Community Inventory Assessment	Community Meetings	Focus Groups	Stakeholder Interviews	Comparables Analysis	On-line Public Opinion Survey	Citizen Opinion and Interest Survey	Acreage Level of Service Analysis	Facility Level of Service Analysis	Access Level of Service Analysis
Facilities	Small Neighborhood Parks	●	●	●	●	●	●	●	●	●	●
	Walking and Biking Trails	●	●	●	●	●	●	●			●
	Beach Parks	●	●		●	●	●	●		●	●
	Large Community Parks	●		●		●		●	●	●	●
	Nature Centers and Trails	●	●			●	●	●			●
	Outdoor Event Space	●	●	●		●		●			
	Water / Boat Access	●		●		●	●	●			
	Indoor Fitness & Exercise Facilities	●	●	●			●	●			
	Outdoor Swimming Pools / Water Parks		●				●	●			●
	Dog Parks	●	●		●			●			
Programs and Activities	Senior Adult Programs	●	●	●	●	●	●	●			
	Adult Fitness and Wellness	●	●	●	●	●	●	●			
	City-wide Special Events	●	●	●		●	●	●			
	Adult Sports Programs	●	●	●	●		●	●			
	Nature Programs	●				●	●	●			
	Adult Art, Dance, Performing Arts	●	●	●		●		●			
	Water Fitness Programs		●				●	●			
	Programs for Disabled	●	●	●			●	●			
	Boating Programs						●	●			
	Youth Art, Dance, Performing Arts	●		●		●		●			



CITY OF FORT LAUDERDALE

**PARKS & RECREATION**  
City of Fort Lauderdale

## Vision Subsystems

*For Management of a Diverse System*



### Parks & Facilities

- Equity and Access
- Meeting Growth
- Continued Enhancement of School Parks



### Recreation & Athletics

- Access to Recreate
- Capacity



### Community Health

- Health and Wellness
- Safety



### Art in Public Spaces

- Diversity of Public Art
- Integration of Art into the Communities' Open Space Fabric



### Sustainability & Resiliency

- Sustainability at the Park Level
- A Resilient System



### Connectivity

- Regional Connectivity
- Complete Streets
- Recreational Walking and Biking



**PARKS & RECREATION**  
City of Fort Lauderdale



## 1 OVERVIEW

- RESEARCH AND ANALYSIS
- NEEDS AND PRIORITIES
- FUTURE VISION
- IMPLEMENTATION

## 2 RECOMMENDATIONS

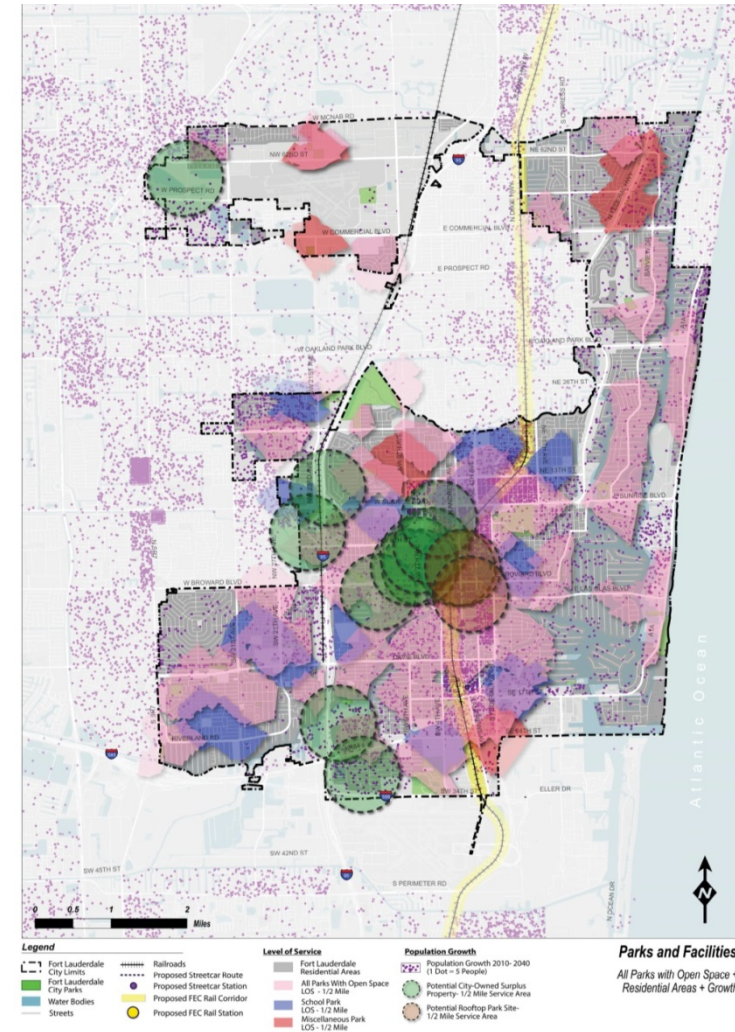
## ■ 1-2 year immediate actions

### Capital

- Establish a **dedicated, capital funding source**:
  - Deferred maintenance
  - Upgrade of existing facilities
  - Land acquisition and the development of new park facilities
- **ADA Barrier Removal Plan**
- **Dedicated funding program for public art**
- **Secure additional grants**



## ACTION ITEMS



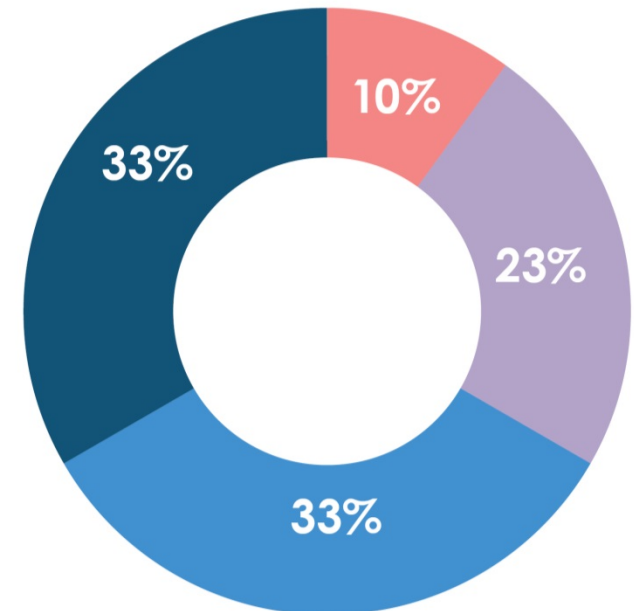
# COST ESTIMATE BY VISION ELEMENTS

Vision Elements	
Parks and Facilities <ul style="list-style-type: none"> <li>• Land Acquisition - <b>\$52,091,000</b></li> <li>• New Parks and Facilities - <b>\$48,811,360</b></li> <li>• Investment in Existing Parks and Facilities - <b>\$30,665,825</b></li> </ul>	<b>\$131,568,185</b>
Recreation and Athletics	<b>\$11,141,033</b>
Community Health (Including ADA Barrier Removal Plan)	<b>\$16,660,630</b>
Art in Public Places	<b>\$1,100,000</b>
Sustainability and Resiliency	<b>\$8,008,448</b>
Connectivity	<b>\$7,521,420</b>
<b>Total</b>	<b>\$175,999,716</b>

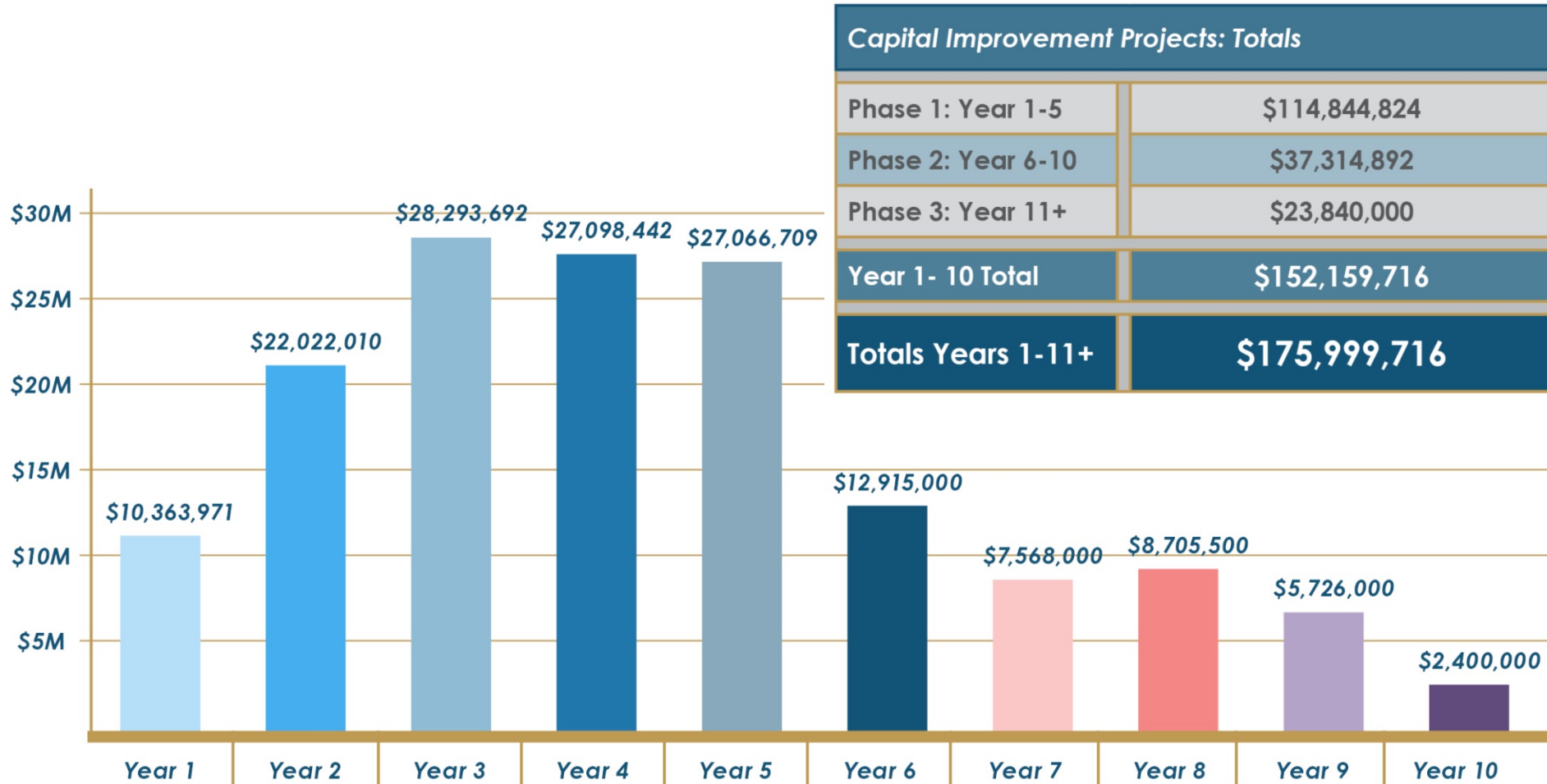


## DEPARTMENT FUNDING POTENTIAL FUNDING

Potential Funding Over Next Ten Years	
Grants (Capital)	\$15,000,000 +/-
Park Impact Fees	\$35,000,000 +/-
Park and Recreation Reinvestment	\$50,000,000 +/-
Parkland Acquisition and Development	\$50,000,000 +/-
<b>Totals</b>	<b>\$150,000,000 +/-</b>

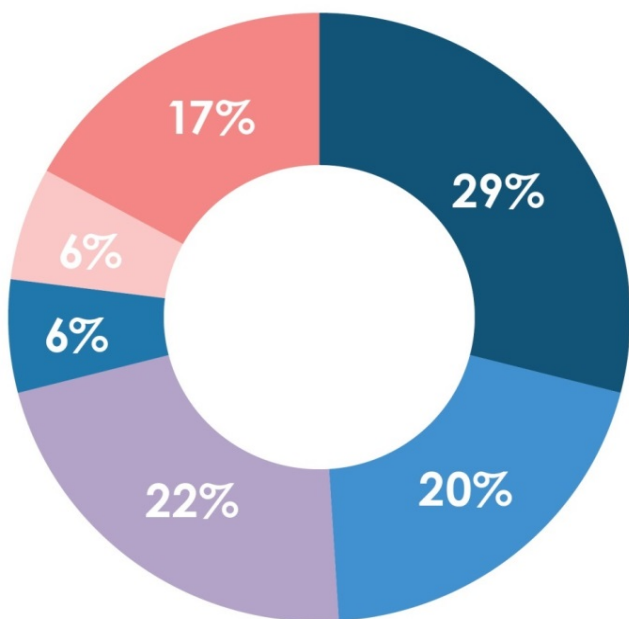
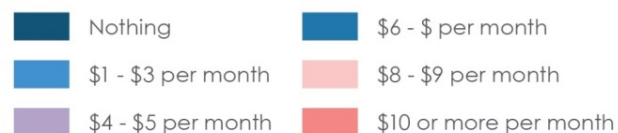


# DEPARTMENT FUNDING RECOMMENDED PHASING PLAN

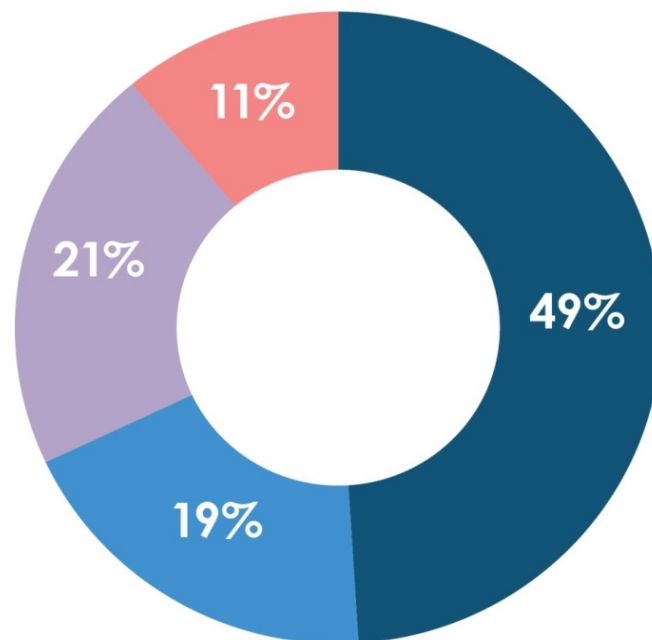


## WILLINGNESS TO PAY

- 71% of households are willing to pay at least *some amount* to fund improvements



- Only 11% of households indicated that they would vote against improvements to parks and recreation facilities



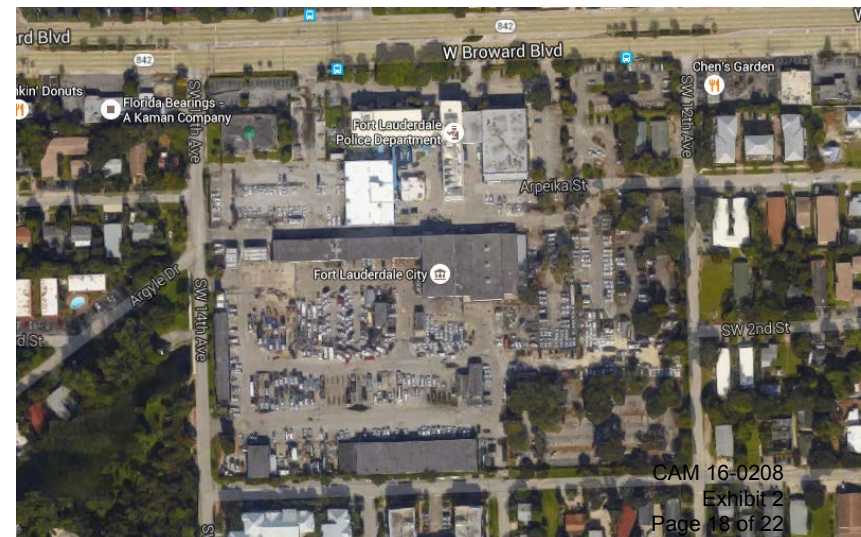
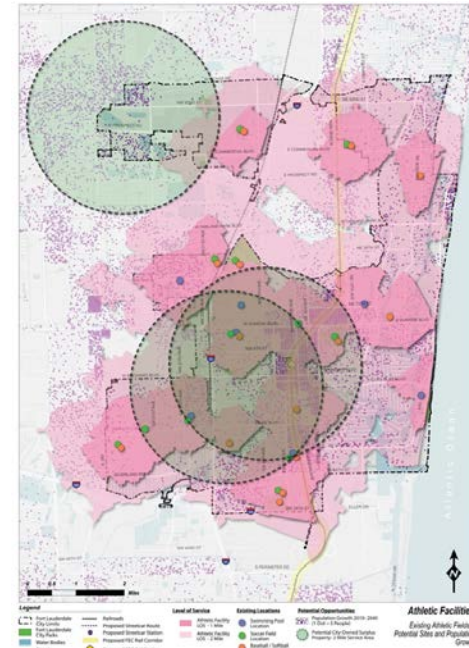


- 1-2 year immediate actions

## Acquisitions

- Develop a **strategic land acquisition program** particularly in **downtown and urbanizing corridors**;
- **Secure targeted surplus or other City owned properties** and strategically acquire adjacent lands or trade with other properties to amalgamate contiguous land holdings that can be used for future parks, particularly in urbanizing portions of the City.

## ACTION ITEMS



- 1-2 year immediate actions

## Policy

- Integrate System Master Plan recommendations into the City Comprehensive Plan;
- Update Level-of-Service (LOS) standards;
- Revise land development regulations;
- Develop a parks-oriented set of sustainability design guidelines and standards.

## ACTION ITEMS

Park Type	Service Radius (Urban to Suburban)	Mode of Transportation
<b>Core Neighborhood-based Activities and Experiences</b>		
Access to small neighborhood parks and open space	1/4 to 1/2 mile	Walk, bike
Walking and biking trails	1/4 to 1/2 mile	Walk, bike
Access to playgrounds	1/4 to 1/2 mile	Walk, bike



- 1-2 year immediate actions

## Initiatives

- Communication
  - Increase marketing and communication efforts;
  - Launch a mobile-friendly website and registration system;
  - Develop system-wide branding and wayfinding program;
  - Develop department facility planning and design guidelines and standards.

## ACTION ITEMS





## ■ 1-2 year immediate actions

### Initiatives

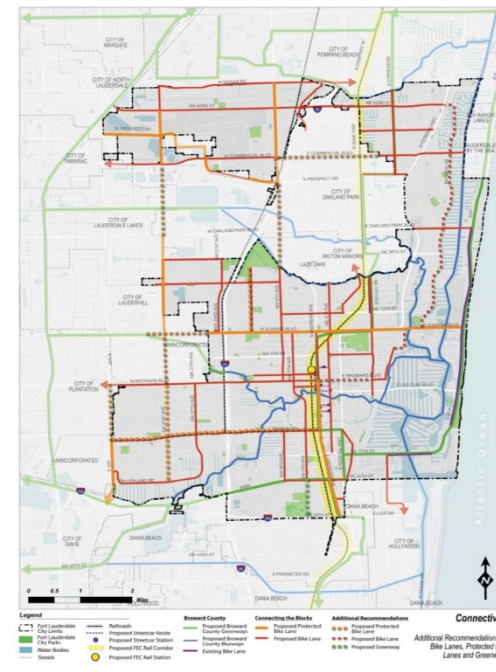
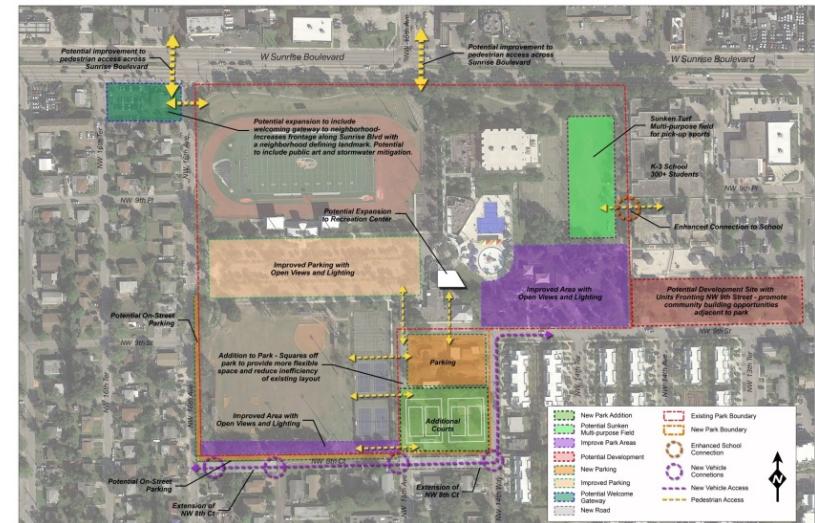
#### ■ Safety

- Update department's Policies and Procedures Manual;
- Conduct ongoing focus groups and community outreach to address safety concerns;
- Develop and maintain more detailed incident reporting.

#### ■ Integration

- Incorporate with the Neighborhood Mobility Master Plans and the city-wide Bicycle and Pedestrian Master Plan;
- Integrate sustainable practices and development of resilient design demonstration projects.

## ACTION ITEMS



# QUESTIONS & COMMENTS