



BETTER TOGETHER

Partners in Creating A Healthy Fort Lauderdale





FOR YOUTH DEVELOPMENT
FOR HEALTHY LIVING
FOR SOCIAL RESPONSIBILITY

Community Vision

LA Lee YMCA Family Center Community Impact

Purpose:

To provide “COMMUNITY BASED” programs and services that focus on youth development, healthy living and social responsibility that result in Strengthening the Foundations of Community

Goal:

- Activate the Sistrunk Community
- Expand current program offerings at the LA Lee YMCA
- Engage community in development of programs and services that meet the needs of the community
- Maximize utilization of Y Facility
- Identify and partner with other community entities, businesses, organizations
- Serve more people

L.A. LEE YMCA



**L.A. LEE YMCA
FAMILY CENTER
408 NW 14th Place**

L.A. LEE YMCA









DAY OF SERVICE AGENDA

9:00am OPENING CEREMONY
9:30am PROJECTS BEGIN
10:00am FESTIVAL OPENS
11:30am LUNCH OPENS
12:30pm CLOSING CEREMONY

POSTING ON SOCIAL MEDIA?

Facebook: YMCA of South Florida
Twitter: @ymcasoflo
#YMCASOFLO
#MLKDay2016
#BrowardCollegeMLKDay
#UnitedWeServe



STAN
Annual M
DAY



Social Responsibility:

“Giving Others a Chance to Give Back”

CAM 16-0590

Exhibit 3

Page 9 of 29



Closing the “clinic to community gap” bringing health screenings to people



Feeding the community during event



Event with “partners list”

2nd Annual

SOUP & SALAD BOWL

Join us for a morning full of fun with a showcase of Healthy Soups & Salads! Celebrate the start of Active Older Adult health & wellness programs in the community and find out who will be the top three winners with the healthiest and tastiest soups and salads in the community!

- Healthy Food
- Dish taste testing
- Giveaways
- Music
- Dance

When?

Thursday, April 28th
10:00 am to 12:00 pm

Where?

Franklin Park

2501 Franklin Drive | Fort Lauderdale, FL 33311

YMCA OF SOUTH FLORIDA

ymcasouthflorida.org

Rules for entry: Each dish must be either a healthy soup or hot/cold salad with low fat, sugar and sodium content. Each dish must list all ingredients and must list fat, sugar, sodium, protein and carbohydrate content to be eligible for contest. Contestants must register to enter by April 26th at one of the locations listed on reverse side.



FREE
OPEN TO THE PUBLIC



CAM 16-0590

Exhibit 3

Page 13 of 29

Sistrunk Business Recognition.

Mr. Walker Grocer. Y CHWs

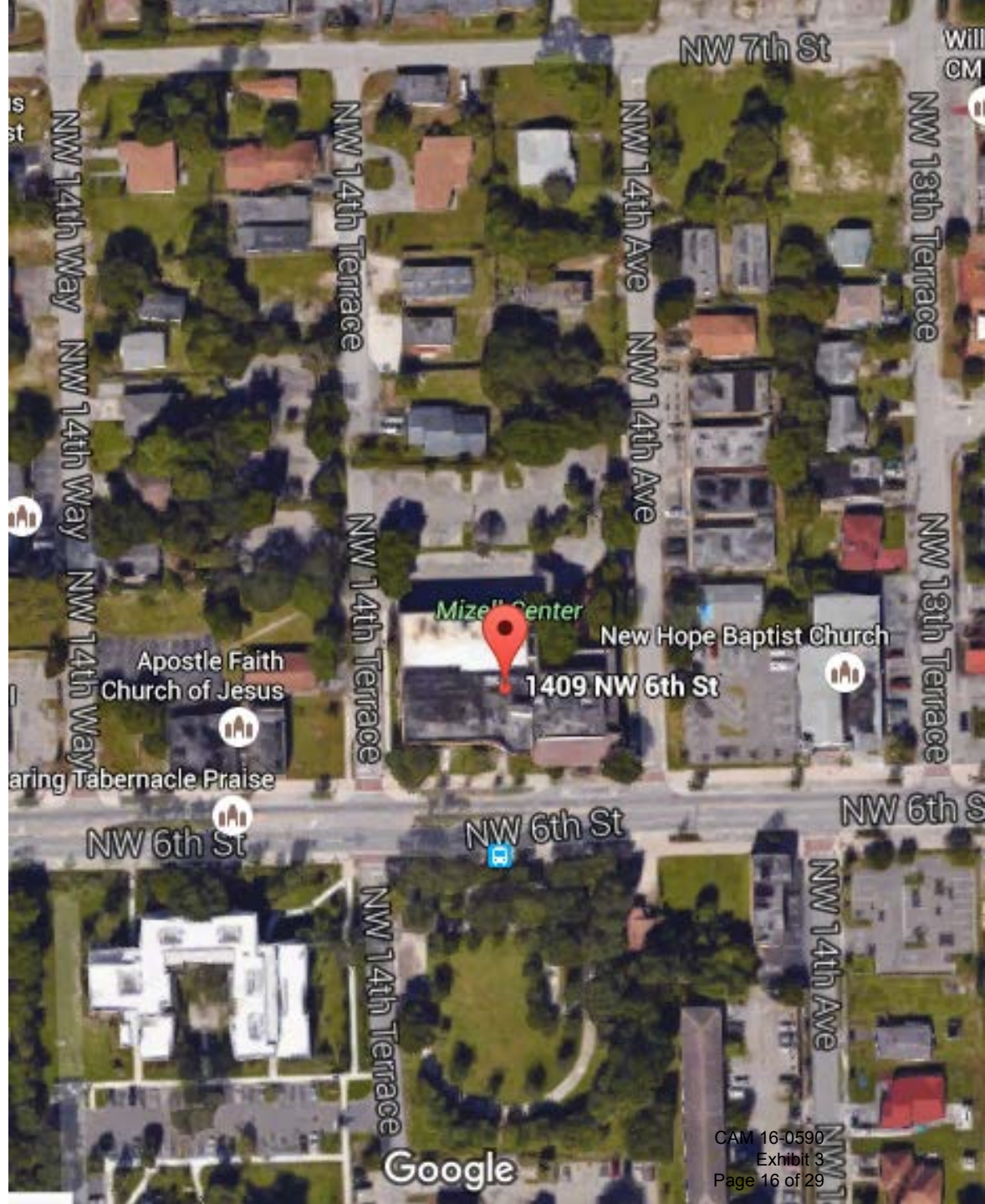


IVORY Take Out Business Recognition

Ms. Lorraine Mizell



Community Based Center





 **MIZELL
CENTER**

NO VEHICLES
NO MOTOR VEH





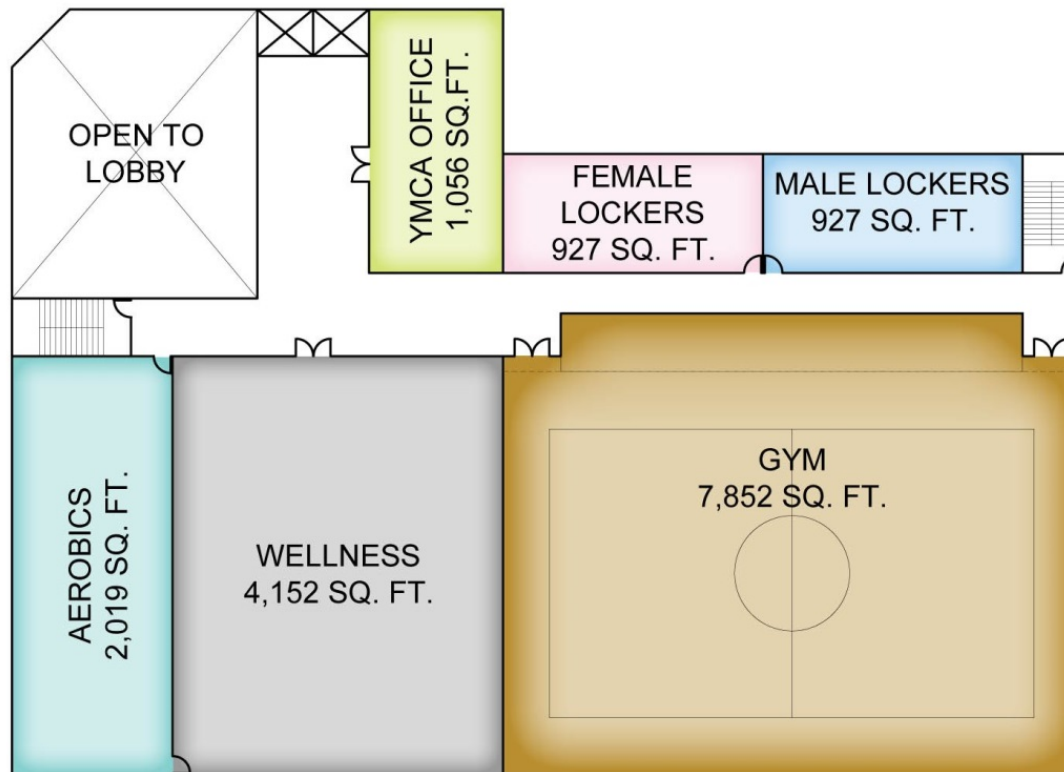




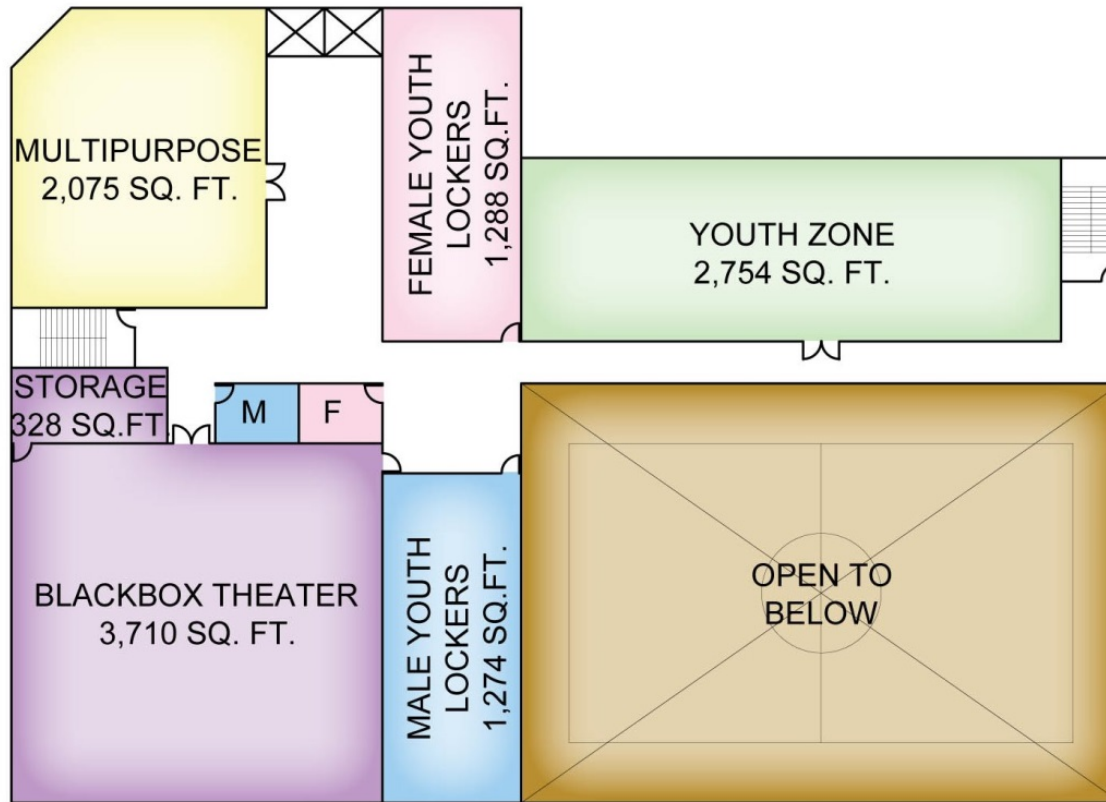
GROUND FLOOR



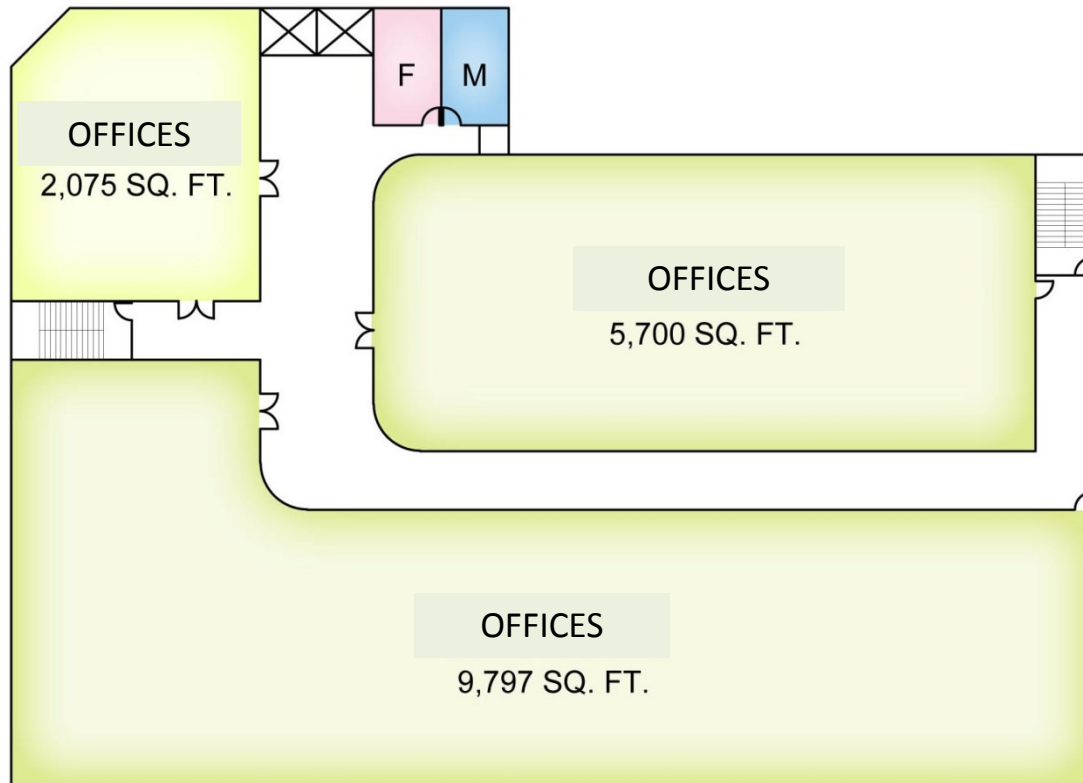
SCALE: 1:40



SECOND FLOOR

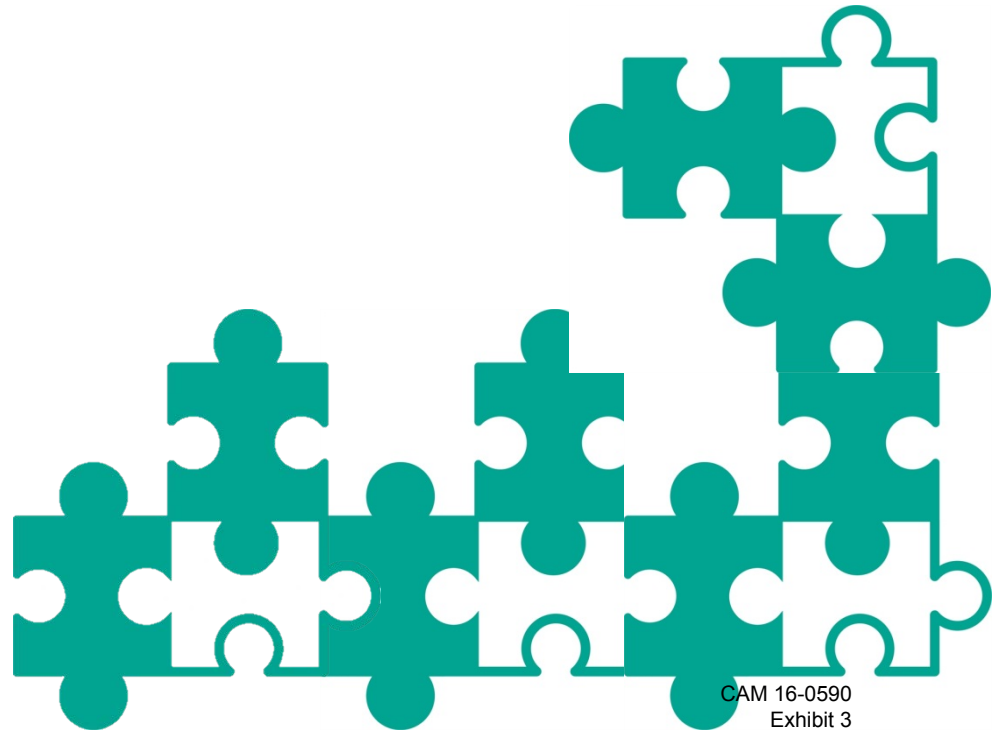


THIRD FLOOR



FOURTH FLOOR

ESTIMATED INVESTMENT:



ESTIMATED INVESTMENT:

L.A. LEE YMCA	\$ 8,000,000
HOLIDAY PARK YMCA	<u>\$ 12,000,000</u>
TOTAL CAPITAL	\$ 20,000,000



PROJECT TIME-LINE



	HOLIDAY PARK / LA LEE
Spring 2016	Engage Architect <ul style="list-style-type: none">- Schematics- Conceptuals
Summer 2016	Finalize Lease Partnership Agreements <ul style="list-style-type: none">- Holiday Park- LA Lee and Mizell Center
Fall 2016	Volunteer Leadership / Develop Advisory Board 10 –20 people
January 2017	Capital Plan Shared Goals Outside Counsel (Hired & Survey Completed) Leadership Commitments Raise Capital Dollars
January 2018	Begin construction
January 2019	Move into new Family Centers

OPPORTUNITIES FOR SUPPORT

- Create Community Task Force Committee
- Naming Rights
 - Current YMCA donors
 - Local Philanthropists and Foundations
- CDBG / CRA
- Partnerships/Collaborations
- Other Funding Streams



NEXT STEPS:

- Secure Partnership with City
- Secure Funding – P3
- Finalize Legal Contract
- Commission Approval
- Finalize Facility Design
- Community Advisory Committee
- Construction 2018-2019





THANK YOU

YMCA OF SOUTH FLORIDA