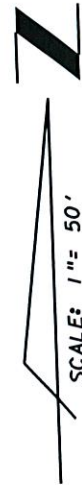
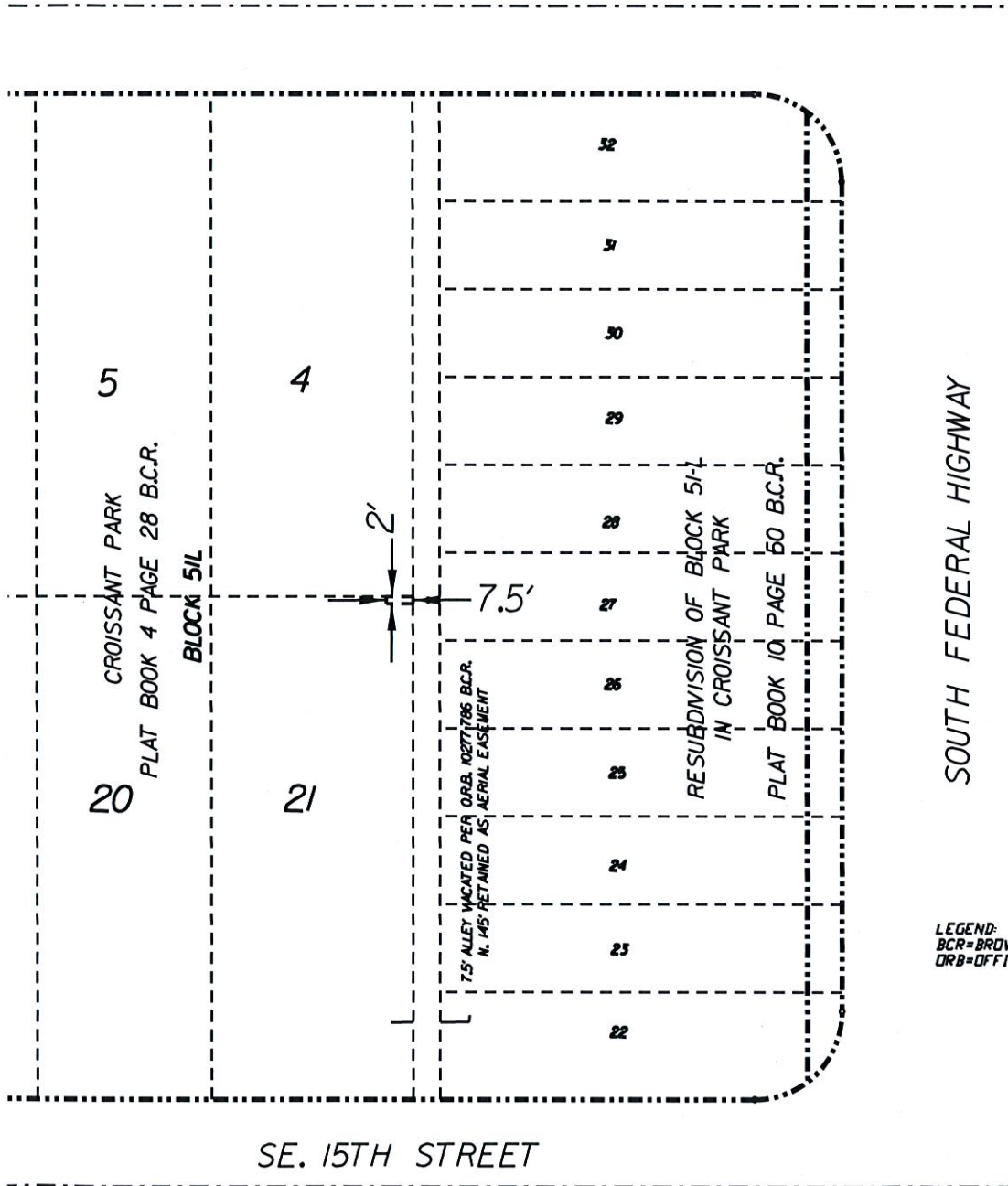


M.D. O.K.

DESCRIPTION

THE NORTH 2 FEET OF THE EAST 7.5 FEET OF LOT 21 IN BLOCK 51L, ACCORDING TO THE PLAT OF CROISSANT PARK AS RECORDED IN PLAT BOOK 4 AT PAGE 28 OF THE PUBLIC RECORDS OF BROWARD COUNTY, FLORIDA, AND AS DESCRIBED ON THE INSTRUMENT FILED IN OFFICIAL RECORDS BOOK 10277 AT PAGE 786 OF THE PUBLIC RECORDS OF BROWARD COUNTY, FLORIDA. SAID LANDS SITUATE IN THE CITY OF FORT LAUDERDALE, BROWARD COUNTY, FLORIDA.

SE. 14TH COURT



LEGEND:
BCR=BROWARD COUNTY RECORDS
ORB=OFFICIAL RECORDS BOOK & PAGE

NOTE: NOT VALID WITHOUT THE SIGNATURE AND THE ORIGINAL RAISED SEAL OF A FLORIDA LICENSED SURVEYOR AND MAPPER. THIS IS NOT A SKETCH OF SURVEY. IT IS ONLY THE GRAPHIC REPRESENTATION OF THE DESCRIPTION DEPICTED HEREON.

BY: Mark D. Sturgis 1-07-16
MARK D. STURGIS
PROFESSIONAL SURVEYOR AND MAPPER NO. 4829
STATE OF FLORIDA

SEAL

CROISSANT PARK CITY OF FORT LAUDERDALE, BROWARD COUNTY, FLORIDA		SKETCH AND DESCRIPTION AERIAL EASEMENT VACATION			
 WINNINGHAM & FRADLEY, INC. ENGINEERS • PLANNERS • SURVEYORS 111 N.E. 44th STREET, OAKLAND PARK, FL 33334 954-771-7440 FAX: 954-771-0298 www.winfrad.com	EB-0002995	DRAWN: CEG	DATE: 10-1-15	PROJECT NUMBER	SHEET
	LB-0002995	CHECKED:	DATE:	W15039	1 OF 1

J:\2015\W15048-Bit 51L Croissant Park-Easement Vacation\Survey\AERIAL EASMT VAC.dgn(Default1)