

**TASK ORDER No. 7**

**Dated this \_\_\_\_\_ day of \_\_\_\_\_, 2015**

**CITY PROJECT No. 11861**

**FORT LAUDERDALE PUBLIC WORKS DEPARTMENT**

**FORT LAUDERDALE EXECUTIVE AIRPORT  
TAXIWAY SIERRA PAVEMENT REHABILITATION  
CONSTRUCTION PHASE SERVICES**

**PROFESSIONAL SERVICES**

This Task Order is pursuant to the Agreement between the City of Fort Lauderdale (CITY) and HDR Engineering, Inc. (CONSULTANT), a Nebraska corporation authorized to transact business in the State of Florida for general engineering aviation consultant services, dated August 19, 2014, and expiring on August 18, 2016, between CITY and CONSULTANT ("MASTER AGREEMENT").

**PROJECT BACKGROUND**

Taxiway Sierra is an approximately 1,400 foot long by 50 foot wide taxiway located north of Runway 27 at Fort Lauderdale Executive Airport (Exhibit B). Taxiway Sierra has three connectors, S-1, S-2, and S-3 that provide access to the airfield for several airport tenants.

The Pavement Condition Index (PCI) values for Taxiway Sierra and its connectors ranged from 35 (Very Poor) to 64 (Fair) based on the Florida Department of Transportation (FDOT) Statewide Airfield Pavement Management Program (PMP) completed in 2012. The PCI prediction models categorized most of the pavement on Taxiway Sierra and its connectors below the FDOT's recommended minimum level of 65 for taxiways. The PMP recommends mill and overlay as the option for rehabilitating the pavement.

CONSULTANT completed the design under a prior task order and it is anticipated that the CITY will enter into a contract for the construction. This proposal is to provide for Construction Phase Services during the execution of the construction. The approximate construction period is 44 calendar days.

**SPECIFIC SCOPE OF SERVICES**

The project consists of constructing a temporary haul road and staging area, milling, leveling asphalt, final lift of asphalt, temporary striping and minor sod installation. Final pavement striping will take place after a one (1) month pavement curing period. Removal of the temporary haul route and restoration of the project site to original condition shall occur after the final striping has taken place. This proposal assumes the CONSULTANT will do all oversight with a supplied Resident Project Representative (RPR).

The project requires professional engineering services for the duration of the construction of the pavement rehabilitation from the Notice-to-Proceed (NTP) for construction until Final Acceptance by the Engineer. Construction phasing for the project requires daytime and nighttime work for the pavement rehabilitation of the taxiway. Following the award of the construction contract the CONSULTANT shall provide the following services:

### **Task 1.0 Resident Project Representative (RPR) Services**

CONSULTANT shall provide a qualified RPR to monitor the construction activities by the selected Contractor. The assigned RPR will:

1. Attend one pre-construction meeting.
2. Participate in weekly construction meetings with the Contractor and the Owner to address construction issues.
3. RPR shall be required to attend and pass airport airfield training class prior to being allowed access to airfield.
4. Participate in one semi-final project inspection and prepare a punch list of items for correction/completion by the contractor. Participate in a final inspection and prepare final punch list inspection if necessary.

#### **Deliverables:**

CONSULTANT shall provide copies of the following for CITY review:

- Daily work reports by the RPR.
- Project photographs

### **Task 2.0 Construction Services**

CONSULTANT, along with their sub-consultant, AVCON, Inc., shall provide the following services related to the construction project at Taxiway Sierra:

1. Attend one pre-construction meeting.
2. Participate in weekly construction meetings with the Contractor and the Owner to address construction issues.
3. Answer requests for clarification of construction documents or other Requests for Information (RFI) received from the Contractor and review change orders and provide written explanations of their cause if and when necessary.
4. Make periodic site visits during construction to visually observe the progress of the project for observation of general compliance to the plans and to review the Contractor's progress. Issue field order directives if and when necessary.
5. Review and approve (or take other appropriate actions as may be required) the Contractor's shop drawings and other submittal data for compliance with the construction documents.
6. Review the Contractor's monthly partial payment requests, and recommend payment as appropriate. Review P-401 asphalt paving test results to evaluate the percent within limits (PWL) to determine pay factors for asphalt. Review and take appropriate action with respect to the Contractor's monthly updates to his construction schedule. Report to the CITY any substantial deviations from the initial approved schedule that will affect the completion of the project.

7. Undertake one semi-final project observation and prepare a punch list of items for correction/completion by the Contractor. Participate in a final inspection and prepare final punch list inspection if necessary.
8. Prepare contract closeout documentation consisting of the final adjusting change order, shop drawing and quantity logs, testing logs, signed and sealed asphalt summary report, and summary of resolution of non-compliant test or special inspection results and review and approval of (or other appropriate action in respect to) the Contractor's final request for payment.

**Deliverables:**

CONSULTANT shall provide the following for CITY review and written approval:

- Reports based on any visits by the Engineer
- Measurement of quantities provided by RPR
- Substantial Completion inspection form

**Task 3.0 – Testing Services**

CONSULTANT shall employ their sub-consultant, Tierra South Florida, Inc., to provide Professional Testing Services for this task.

1. Inspect the Contractor's lab and ensure calibration of equipment meets project requirements.
2. Review and approve contractor's asphalt Job Mix Formula for conformance to P-401 specifications.
3. Conduct inspections of the asphalt plant, material stockpiles, as well as field inspections during the asphalt test section.
4. Conduct inspections of the asphalt plant, material stockpiles, as well as field inspections during paving operations.
5. Provide signed and sealed asphalt summary report.

**Deliverables:**

Deliverables for this task will consist of the following:

1. Testing logs
2. Signed and Sealed asphalt testing reports
3. Report of suitability of Contractor's Lab
4. Signed and sealed asphalt summary report

**PROJECT ASSUMPTIONS**

CITY will not be providing an inspector during this project and the RPR will represent the CITY for coordination with Contractor.

### **ADDITIONAL SERVICES**

If authorized in writing by the CITY as an amendment to this Task Order, the CONSULTANT shall furnish, or obtain, Additional Services of the types listed in Article 8 of the Master Agreement. The CITY, as indicated in the Master Agreement, will pay for these services.

### **PERFORMANCE SCHEDULE**

The CONSULTANT shall perform the services concurrent with the construction schedule for the Taxiway Sierra Pavement Rehabilitation project.

### **PROJECT FUNDING**

Performance of this project is at the City's discretion and may be contingent upon receipt by the CITY of funding from the Florida Department of Transportation under the applicable Joint Participation Agreement, and the Airport's approved CIP, and work shall not begin until funding sources for this project are in place.

### **METHOD OF COMPENSATION**

The services performed will be accomplished using the Not-to-Exceed method of compensation. Reimbursable expenses associated with these services are not included in the fees and will be itemized separately, subject to an established Not-to-Exceed limit. Payment for reimbursable expenses shall be based on actual costs for items in accordance with Section 7.2 of the Master Agreement. The total hourly rates payable by the CITY for each of the CONSULTANT's employee categories, reimbursable expenses and sub-consultant fees are shown on Exhibit "A" attached hereto and made a part hereof.

### **TERMS OF COMPENSATION**

Services will be provided for the following Not-to-Exceed amounts:

Task No	Task Title	Labor Fees		Total
		Consultant	Sub consultant	
1	RPR Services	\$17,569.50	\$0.00	\$17,569.50
2	Construction Services	\$6,893.50	\$3,316.00	\$10,209.50
3	Testing Services	\$0.00	\$5,330.00	\$5,330.00
<b>TOTAL</b>				<b>\$ 33,109.00</b>

**CITY CONTACTS**

Requests for payments should be directed to City of Fort Lauderdale Accounts Payable via e-mail to [AcctsPayable@FortLauderdale.gov](mailto:AcctsPayable@FortLauderdale.gov). All other correspondence and submittals should be directed to the attention of Fernando Blanco, Airport Engineer/PM2, at the address shown below. **Please be sure that all correspondence refers to the City project number and title as stated above.**

City of Fort Lauderdale  
City Hall, 4<sup>th</sup> Floor Engineering  
100 North Andrews Avenue  
Fort Lauderdale, FL 33301

**CONSULTANT CONTACTS**

HDR Engineering, Inc.  
3250 West Commercial Blvd.  
Suite 100  
Fort Lauderdale, FL 33309  
John Neff, P.E., Senior Project Manager  
Email: [John.Neff@hdrinc.com](mailto:John.Neff@hdrinc.com)  
Phone: 954-233-4915  
Fax: 954-233-4953

**[REMAINDER OF THIS PAGE LEFT BLANK]**

IN WITNESS WHEREOF, the parties execute this Task Order as follows:

WITNESSES:

CITY OF FORT LAUDERDALE, a Florida  
municipal corporation:

\_\_\_\_\_

Print Name

By: \_\_\_\_\_  
LEE R. FELDMAN,  
City Manager

\_\_\_\_\_

Print Name

ATTEST:

\_\_\_\_\_  
JEFFREY A. MODARELLI,  
City Clerk

Approved as to form:

\_\_\_\_\_  
RHONDA MONTOYA HASAN,  
Assistant City Attorney

CONSULTANT:

WITNESESS:

HDR ENGINEERING, INC.,  
A Nebraska Corporation authorized to  
transact business in the State of Florida

\_\_\_\_\_  
Print Name:

By: \_\_\_\_\_  
Charles T. Sinclair  
Sr. Vice President

\_\_\_\_\_  
Print Name:

ATTEST:

\_\_\_\_\_  
Bonnie J. Kudron  
Assistant Secretary

(CORPORATE SEAL)

STATE OF \_\_\_\_\_:

COUNTY OF \_\_\_\_\_:

The foregoing instrument was acknowledged before me this \_\_\_\_\_ day of \_\_\_\_\_, 2015, by Charles T. Sinclair as Sr. Vice President for HDR Engineering, Inc., a Nebraska corporation authorized to transact business in the State of Florida.

(SEAL)

\_\_\_\_\_  
Notary Public, State of Florida  
(Signature of Notary Public)

\_\_\_\_\_  
Name of Notary Typed, Printed or Stamped

Personally Known \_\_\_\_ OR Produced Identification \_\_\_\_\_  
Type of Identification Produced \_\_\_\_\_

EXHIBIT A

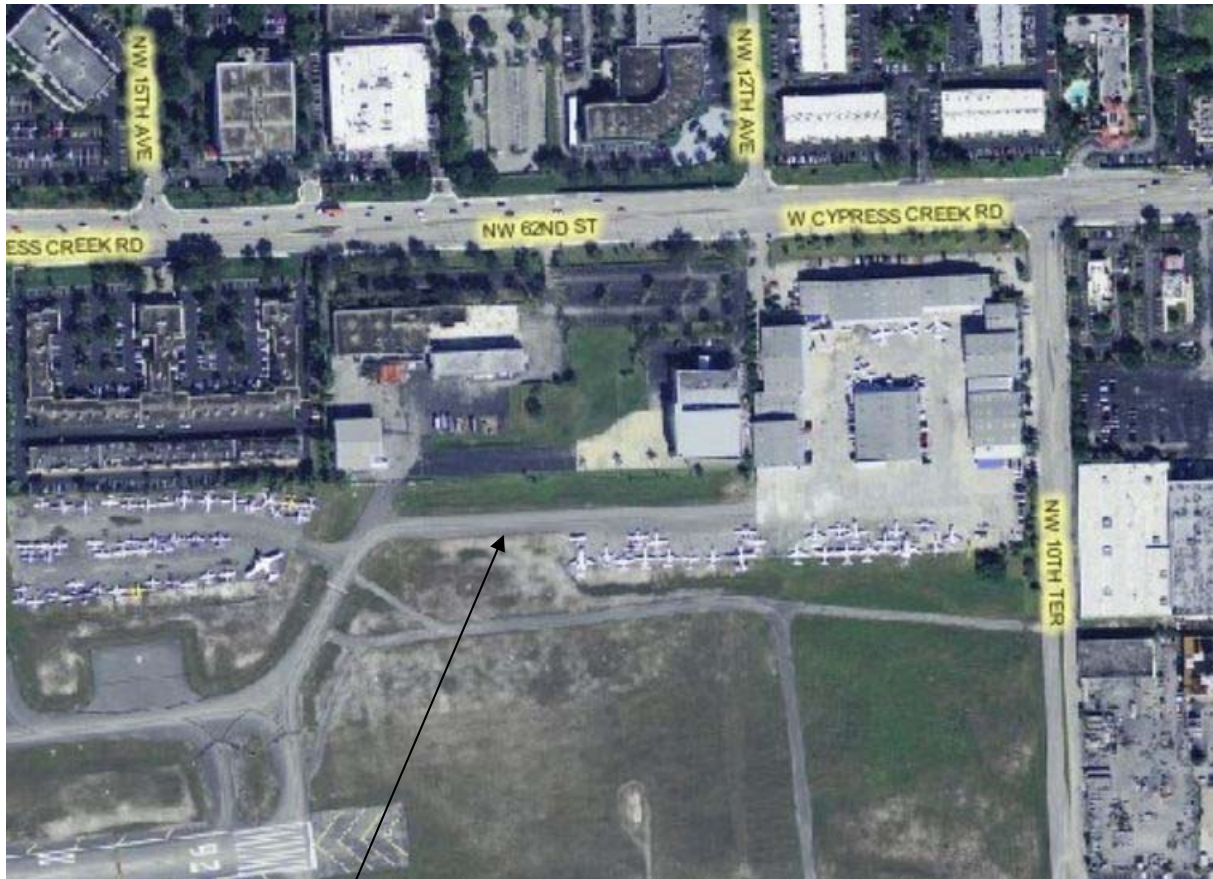
EXHIBIT NO. A TO FORM OF CONTRACT			Sr. Project Manager	Senior Inspector	Senior Engineer	Total Hours	Labor Cost
HDR Engineering, Inc.			\$212.50	\$165.75	\$178.50	0	
TASK DESCRIPTION							
Task 1- RPR Services							
1	Attend Preconstruction meeting			1		1	\$ 165.75
2	Participate in weekly coordination meetings			4		4	\$ 663.00
3	Provide Resident Project Representative services throughout project			100		100	\$ 16,575.00
4	Participate in one semi-final observation to create punch list			1		1	\$ 165.75
		Subtotal	0.0	106	0	106	\$ 17,569.50
Task 2- Construction Services							
1	Attend Preconstruction meeting		1			1	\$ 212.50
2	Participate in weekly coordination meetings		1		4	5	\$ 926.50
3	Respond to RFI's		1	4	4	9	\$ 1,589.50
4	Periodic Site Visits		1		4	5	\$ 926.50
5	Submittal Review		1	4	6	11	\$ 1,946.50
6	Review Contractor Pay Applications		0.5	1	1	2.5	\$ 450.50
7	Participate in one semi-final observation to create punch list		0.5		2	2.5	\$ 463.25
8	Prepare closeout documentation		1	1		2	\$ 378.25
		Subtotal	7	10	21	38	\$ 6,893.50
Raw Labor Subtotal			7	116	21	144	\$ 24,463.00
SUBCONSULTANT EXPENSES							
1	AVCON						\$3,316.00
2	Tierra SF						\$5,330.00
TOTAL SUBCONSULTANT EXPENSES							\$8,646.00
TOTAL PROJECT FEE							\$33,109.00



AVCON, INC.	PROJECT MANAGER		SENIOR ENGINEER		ENGINEER		JUNIOR ENGINEER		ADMINISTRATIVE	
Rate (\$/Hour):	\$150		\$125		\$99		\$85		\$50	
	labor hours	Cost	labor hours	Cost	labor hours	Cost	labor hours	Cost	labor hours	Cost
<b>Task 2.0-Construction Services</b>										
1.0-Attend preconstruction conference by teleconference.	1	\$150	1	\$125	0	\$0	0	\$0	2	\$100
3.0-Respond to various Requests for Information (RFIs), Job Memoranda (JM), and other field prepared inquiries.	0	\$0	2	\$250	4	\$396	1	\$85	1	\$50
5.0-Catalog, review and provide comments on shop drawings, samples and other submissions as to conformance with design concept and construction documents.	0	\$0	4	\$500	4	\$396	0	\$0	1	\$50
7.0-Attend and document the Substantial Completion and/or Final Inspection for the completed project as determined by FXE and HDR.	0	\$0	0	\$0	4	\$396	0	\$0	0	\$0
8.0-Prepare Record Documents and Close-out Documentation.	1	\$150	2	\$250	2	\$198	2	\$170	1	\$50
<b>Sub-Total</b>	<b>2</b>	<b>\$300</b>	<b>9</b>	<b>\$1,125</b>	<b>14</b>	<b>\$1,386</b>	<b>3</b>	<b>\$255</b>	<b>5</b>	<b>\$250</b>
<b>TOTAL NOT-TO-EXCEED FEE:</b>										<b>\$3,316</b>

TIERRA SOUTH FLORIDA, INC.						
UNIT RATE FEE SCHEDULE						
Construction Services Asphalt Inspection/Professional Services for Taxiway Sierra						
Task	Description	Unit	# of Units	Unit Price	Total	
1	Asphalt Plant Facility Inspection	Hour	8	\$ 60.00	\$ 480.00	
2	Review and approve Job Mix Formula (Sr. Eng.)	Hour	4	\$ 125.00	\$ 500.00	
3	Asphalt Plant Facility Inspection-test section	Hour	6	\$ 60.00	\$ 360.00	
3	Asphalt Field Inspection-test section	Hour	6	\$ 60.00	\$ 360.00	
4	Asphalt Plant Inspection-During production	Hour	24	\$ 60.00	\$ 1,440.00	
4	AsphaltField Inspection-During production	Hour	24	\$ 60.00	\$ 1,440.00	
5	Provide asphalt summary report (Sr. Eng.)	Hour	6	\$ 125.00	\$ 750.00	
	TOTAL CONSTRUCTION MATERIALS TESTING SERVICES				<b>\$ 5,330.00</b>	

EXHIBIT B



PROJECT LOCATION