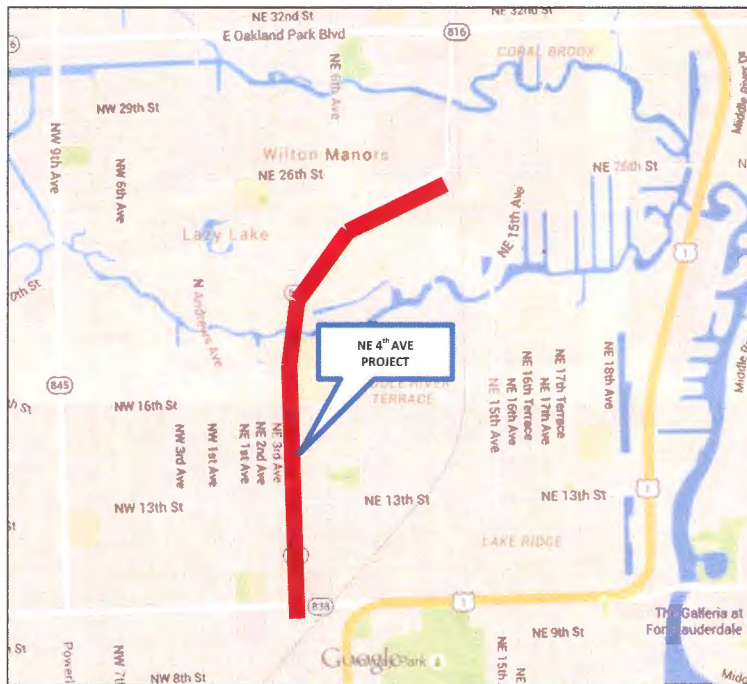


NE 4TH AVENUE/ WILTON DRIVE (SR811), SUNRISE BOULEVARD TO NE 26TH STREET

EXECUTIVE SUMMARY



The City is considering a Complete Streets project on NE 4th Avenue to balance the modes of transportation by adding bike lanes, retaining shade trees, and improving safety. The cities of Fort Lauderdale and Wilton Manors are partnering to explore the possibility of right-sizing NE 4th Avenue/Wilton Drive between Sunrise Boulevard and NE 26th Street in order to improve safety conditions for all users along the corridor including increasing connectivity of the bicycle network. This project is funded by the Broward MPO Mobility Project funds and is consistent with the policy direction provided in the City's *Fast Forward Fort Lauderdale 2035 Vision*.

In 2006, City of Wilton Manors completed a traffic analysis along NE 4th Avenue/Wilton Drive between Sunrise

Boulevard to NE 26th Street which recommended a lane elimination to support the goals of creating a pedestrian friendly entertainment/shopping district with calm traffic speeds and safer operations for bikes, transit, and people without severely impacting traffic flow. That project never moved forward; however the City of Wilton Manors is partnering on this project to support multi-modal accommodations within the City of Fort Lauderdale.

EXISTING CONDITIONS

The current configuration of NE 4th Avenue within Fort Lauderdale includes two 11-foot lanes northbound, two 11' lanes southbound, 11' center turn lane with medians, no bike lanes, and detached sidewalks within 80-feet of existing right-of-way. Within Wilton Manors, the street includes 7-foot on-street parking lanes, 4-foot bike lanes, four 11-foot travel lanes, and an 11-foot center turn lane within 90 feet of existing right-of-way. Ten traffic signals and 17 bus stops exist within this corridor. NE 4th Avenue is classified as a Commercial Avenue in the Connecting the Blocks Plan. It is posted 30 mph and currently hosts traffic volumes of 16,000 vehicles per day.

Currently there is a great need to provide enhanced multi-modal accommodations along NE 4th Avenue as seen in the current statistics for the neighborhoods. The west side of NE 4th Avenue is South Middle River Civic Association and the east side is Middle River Terrace within the City of Fort Lauderdale. This community has the highest residential density in the city with more than 12 people per acre. This community also has the highest number of children with 1 in 4 residents in this project under 18 years old. Per census data, this neighborhood includes a high number of households who do not have a vehicle and have an average household income of less than \$45,000/year. Over 45,000 people ride the Route #50 bus each year in one direction along this route and those riders need improved pedestrian crossing conditions to access their final destinations once getting off transit and to reach the stops. Per the 2010-2013 census data, residents within the southern part of corridor are within the second highest tier who bike to work. Three city parks and three public schools with over 3,000 students are within blocks of this project. Within the City of Fort Lauderdale,

over 170 traffic crashes have occurred since 2013. Wilton Manors has seen 2 fatalities and over 100 crashes in the same time. Strava, an application in which users track walk/bike trip data, shows NE 4th Avenue as a preferred bike corridor linking Wilton Manors and downtown Fort Lauderdale.

NE 4th Avenue in the City of Fort Lauderdale

Wilton Drive in City of Wilton Manors



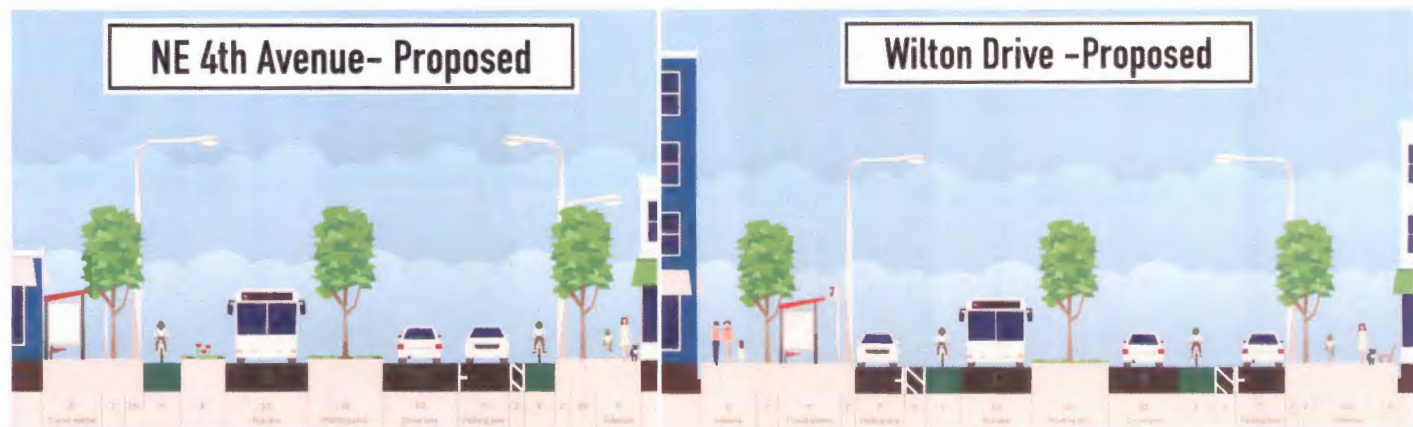
Strava.com Global Heat Map of Fort Lauderdale- Bike trips from January 2014 through May 2015.

PROPOSED CONDITIONS

The proposed lane elimination would retain the existing curbs within the City of Fort Lauderdale, repave and stripe new lane configuration to include 7-foot bus bay/buffered area, 5-foot bike lanes, and 10 foot travel lanes in each direction while maintaining the center turn lane with medians. This configuration will protect the existing large oak trees, detached sidewalks, and transit shelters. Within Wilton Manors, the section will include on-street parking, buffered bike lanes, and one travel lane in each direction. Traffic signals would remain in existing locations with minor modifications to remove signal heads for reduced lanes. Transit operations will be analyzed to provide improved access to transit and balanced operations with vehicular traffic flow.

NE 4th Avenue/Wilton Drive is a FDOT state roadway, therefore, any proposal to eliminate a travel lane must be considered under a formal Lane Elimination Application review by FDOT. The objective of this review is to determine if any adverse impacts to traffic flow, safety and community interests would occur with elimination of a traffic lane. Traffic counts were collected in late July 2015 and are currently being analyzed to assess traffic flow and safety. Additional data will be collected now that school is in session.

With the redesign of NE 4th Avenue/Wilton Drive, safety conditions for transit riders, bicyclists, and pedestrians and vehicles will be significantly improved. Outreach directly to the neighborhood associations is currently being coordinated through the following meetings- City of Wilton Manors Neighborhood Meeting held June 4, 2015 (received strong support), South Middle River Terrace Civic Association to be held August 25, 2015 at 6:30pm and Middle River Terrace Civic Association on September 10, 2015 at 5:30 pm. Both meetings received support to proceed with the traffic study.



Proposed NE 4th Avenue -City of Fort Lauderdale

Proposed Wilton Drive - City of Wilton Manors

PROJECT TIMELINE

FDOT will begin design in early 2016 with construction estimated in early 2018.

