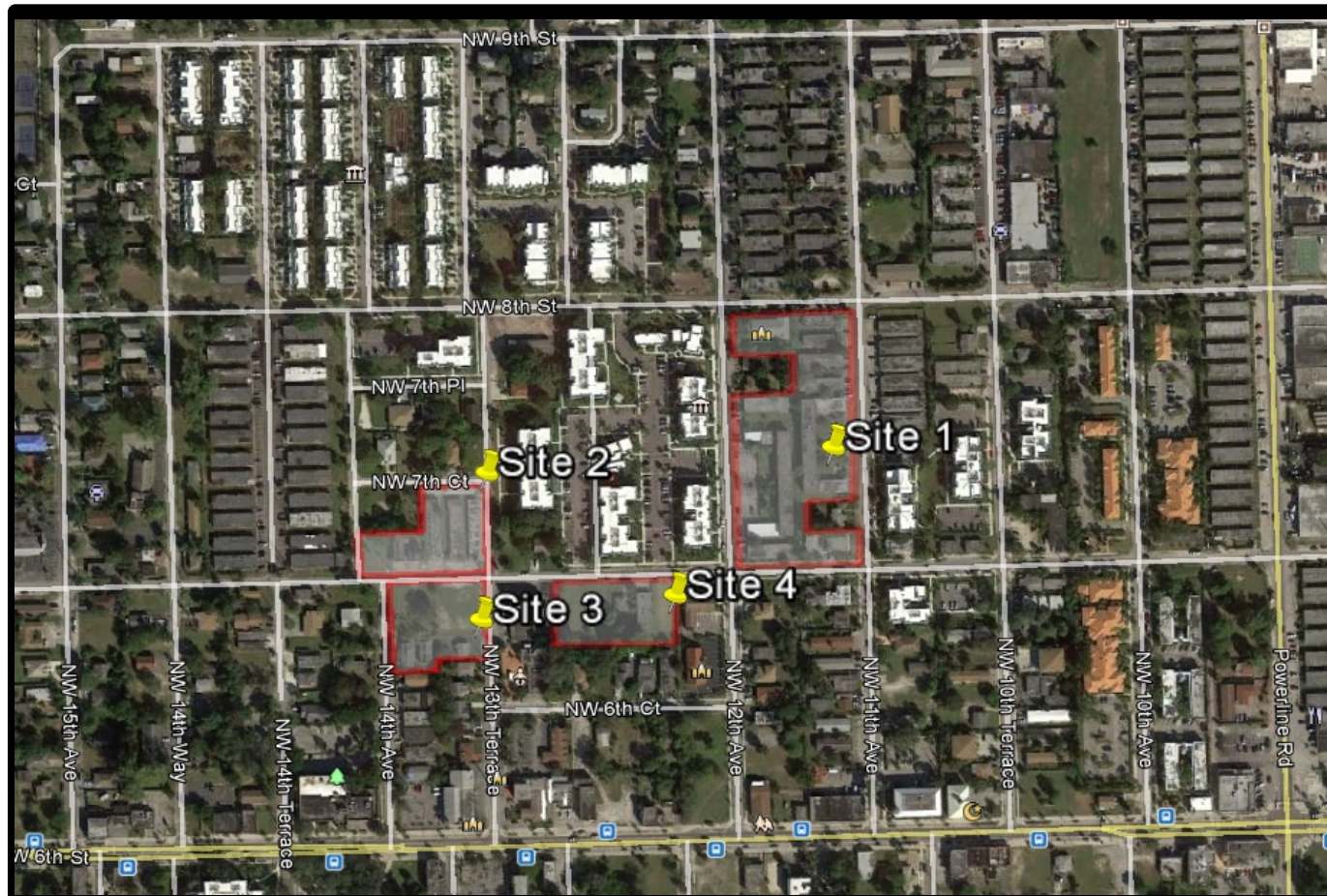


## Exhibit A

## Exhibit A



### Proposed NW Gardens V Brownfield Area

**Approximate Address:** Located in the Vicinity of NW 7<sup>th</sup> Street between NW 11<sup>th</sup> Avenue and NW 14<sup>th</sup> Avenue, Ft. Lauderdale, Broward County, FL 33310

 Approximate Brownfield Area Boundary

**Aggregate Size:** 5.5 acres (four separate parcels)

