



CORPORATE HEADQUARTERS  
1077 West Blue Heron Blvd., Riviera Beach, FL 33404  
Phone: (561)853-6659 / (800)772-7932 Fax: (561)853-4294

NORTHEAST DIVISION

707 Commerce Dr., Concord, NC 28025  
Phone: (704)788-3733 / (800)772-7932 Fax: (704)788-3843

www.atlassignindustries.us

This design / engineering is to remain Atlas Sign Industries exclusive property until approved and accepted thru purchase by client named on drawing. No part of design and or specifications may be duplicated without written authorization of Atlas Sign Industries.

© Copyright 2014

Drawing No.	40686
Sheet No.	1
Date	2/3/2014
Path	Total MD   FTL   Cypress Creek
PM	C. Lancaster
Drawn By	C. Barbato
Scale	As Shown
Revision 1	2/24/14 By CB
Revision 2	
Revision 3	
Revision 4	
Revision 5	
Revision 6	

**TOTAL MD**  
FAMILY MEDICINE & URGENT CARE

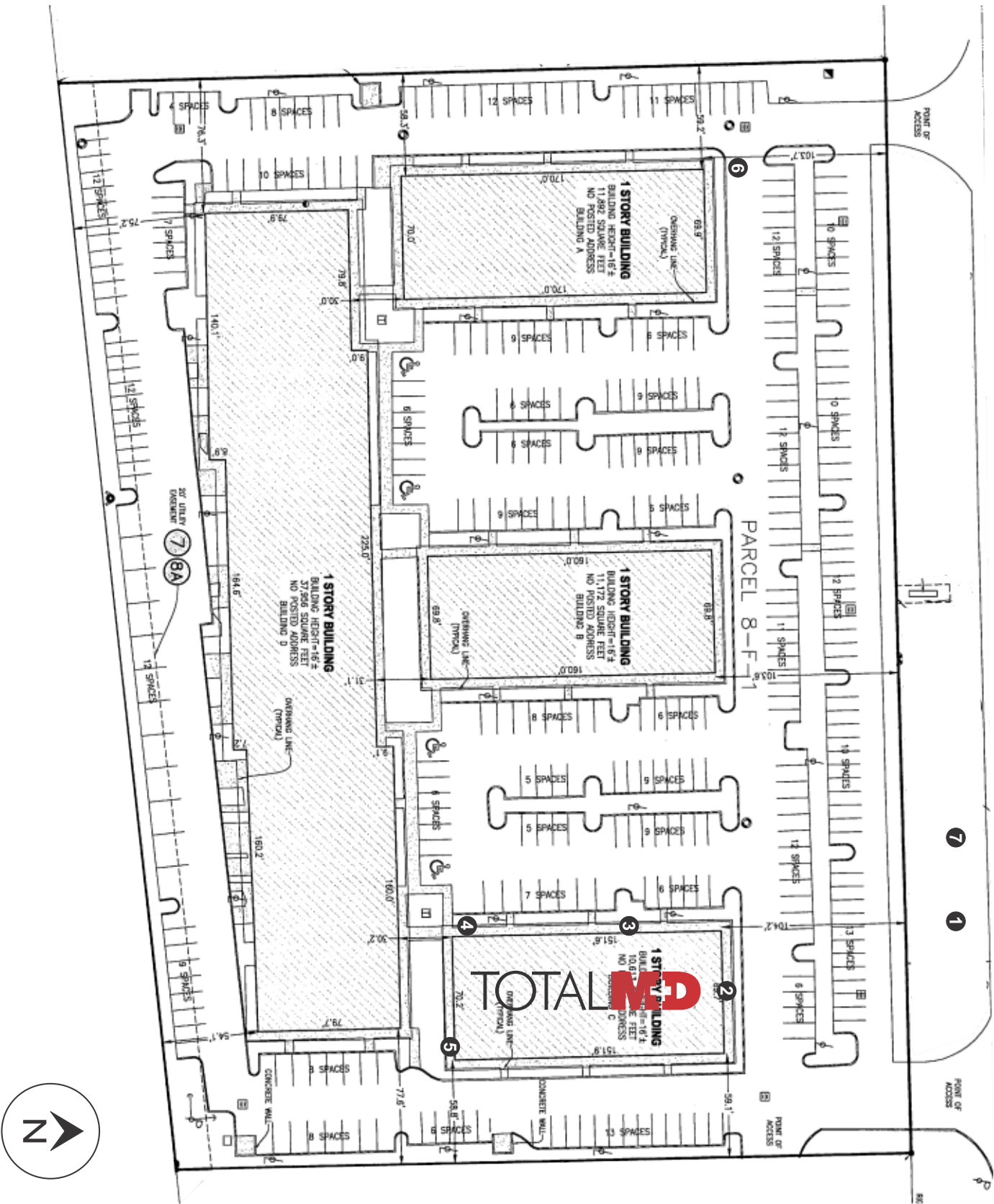


Approved by:

Date: \_\_\_\_\_

- ☐ APPROVED AS SHOWN
- ☐ APPROVED AS NOTED
- ☐ CORRECT & RESUBMIT

Cypress Creek Blvd



PRODUCT LIST

- 1

5' OAH Double Face Internally Illuminated Monument

Page 2
- 2

3' Internally Illuminated Raceway Mounted Channel Letters

Page 3
- 3

3' Internally Illuminated Raceway Mounted Channel Letters

Page 4
- 4

Single Face Internally Illuminated Directional Sign

Page 5
- 5

Single Face Internally Illuminated Directional Sign

Page 5
- 6

Single Face Internally Illuminated Directional Sign

Page 5
- 7

Temporary V-Shape Sign

Page 6