



CITY OF FORT LAUDERDALE

TRANSPORTATION & MOBILITY



Highlights of a Completed and a Future Project

FY 2014 Downtown Walkability - Completed Projects



CITY OF FORT LAUDERDALE
**CONNECTING
THE BLOCKS**
PAINTED INTERSECTION PROGRAM
A DOWNTOWN WALKABILITY PROJECT



FY 2014 Downtown Walkability

Completed Projects – Painted Intersections & Crosswalks



E. Las Olas and SE 1st Ave.
Pedestrian Push Button Signal, ADA Upgrades, and Crosswalk
Enhancements



FY 2014 Downtown Walkability

Completed Projects – Painted Intersections & Crosswalks



E. Las Olas and SE 2nd Ave.

Rapid Flashing Beacons, ADA Upgrades and Crosswalk Enhancements

CITY OF FORT LAUDERDALE
TRANSPORTATION & MOBILITY



FY 2014 Downtown Walkability

Completed Projects – Painted Intersections & Crosswalks



E. Las Olas and SE 3rd Ave.



FY 2014 Downtown Walkability

Completed Projects

- **Mid-Block Pedestrian Crosswalk at SE 3rd Avenue and SE 1st Street** – ADA ramp upgrades, Crosswalk, Pedestrian Actuated Rapid Flashing Beacon, and Refuge Area



FY 2014 Downtown Walkability

Bike Lanes on NE 2nd Street from Andrews to 3rd Avenues

- Identified in the Connecting the Blocks Program
- Leveraged through City's Microsurfacing Program



FY 2014 Downtown Walkability

Delivered proudly by:



Moving Forward – Smart Parking

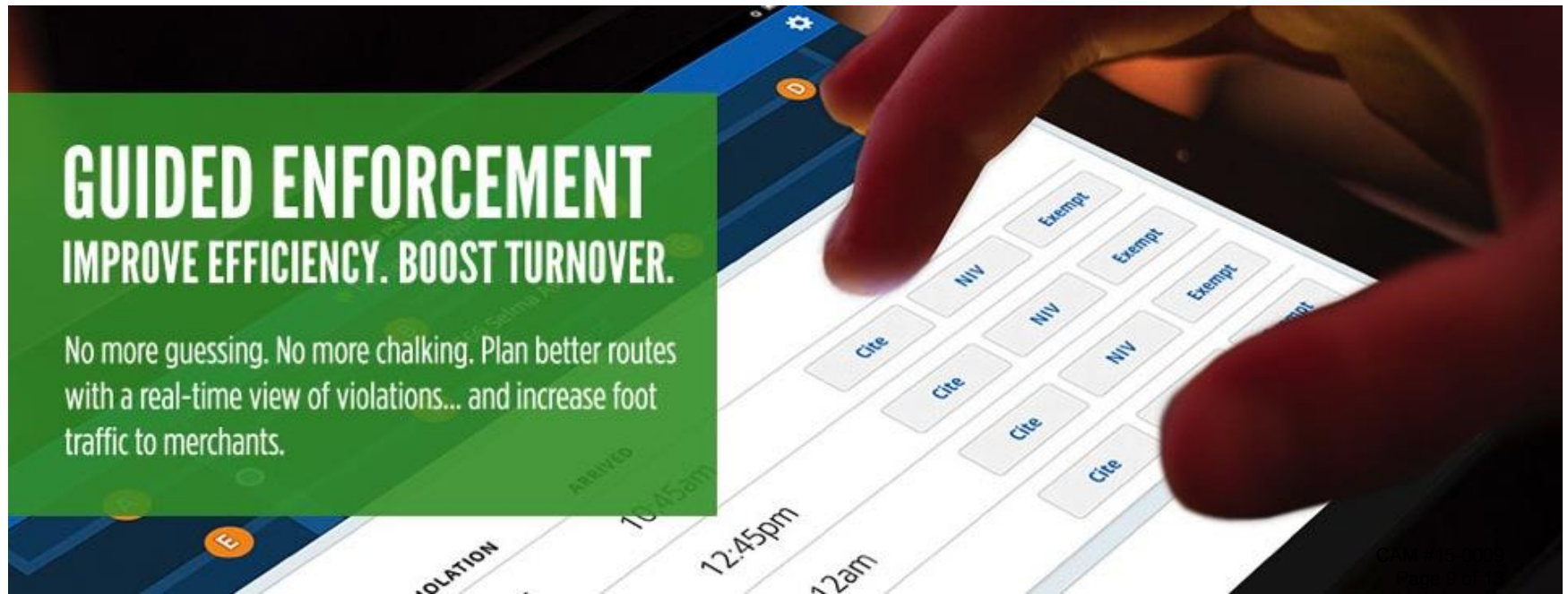
ACCELERATING UNIQUELY FORT LAUDERDALE

An opportunity to invest in a progressive future and legacy for your city. Smart parking is a cornerstone for your smart city platform.



GUIDED ENFORCEMENT IMPROVE EFFICIENCY. BOOST TURNOVER.

No more guessing. No more chalking. Plan better routes with a real-time view of violations... and increase foot traffic to merchants.

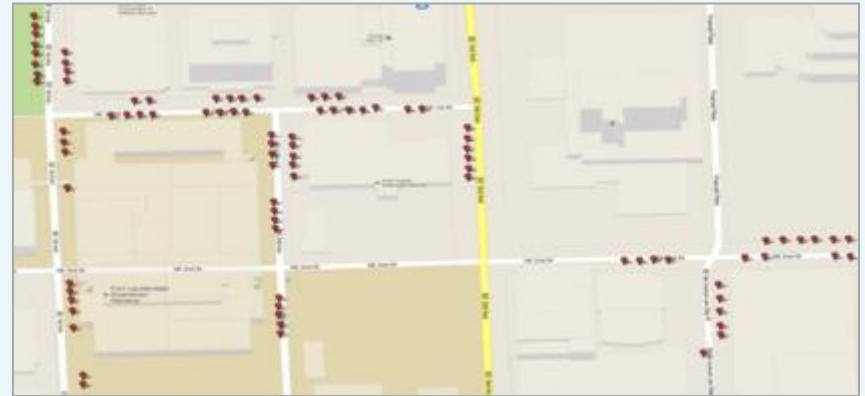


Building a uniquely smart city through smart parking

In 2012, the City completed a pilot program that proved the importance of a Smart Parking System in the development of a **Multimodal and Connected Community**.

SCOPE AND KEY FACTS

Installation Date	• September 18, 2012
Client Acceptance	• February 1, 2013
Pilot End Date	• April 30, 2013
No. of Sensors	• 91 On-Street Spaces
Locations	• Downtown Corridor



Pilot Location

LESSONS LEARNED FROM THE PILOT

Guidance

Delivered accurate **real-time guidance** to residents and visitors via the mobile app

Analytics

Identified opportunity to **optimize utilization** through demand-based pricing

Enforcement

Identified opportunity for enforcement officers to become community ambassadors by **improving productivity through guided enforcement**

Revenue

Identified opportunity to increase revenue by using the data to make **data-driven** policy and enforcement management **decisions**



Benefits of a City-Wide Deployment

A City-Wide deployment will enable the city to effectively deliver real-time guidance to residents and visitors and make data-driven decisions about all interconnected areas of the parking ecosystem.



1. GUIDANCE



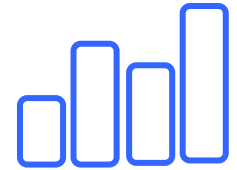
2. POLICY



3. RATES



4. ENFORCEMENT



5. ASSET MANAGEMENT

<ul style="list-style-type: none">• Guidance throughout the city for residents and visitors• City- Wide Traffic and emission reductions	<ul style="list-style-type: none">• Adjust policy hours to optimize utilization and availability• Ability to shift long-term parking sessions to underutilized spaces.	<ul style="list-style-type: none">• Full-scale Demand-based pricing implementation• Ability to shift rates to achieve target occupancy citywide	<ul style="list-style-type: none">• Optimize enforcement routes• Maximize officer productivity• Expand workforce capabilities	<ul style="list-style-type: none">• Avoid capital costs of new development by better utilizing existing assets• Measure impacts of economic and transit development
--	---	--	---	--

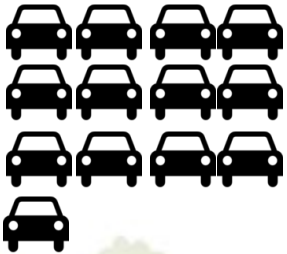


Accelerating to a Smart City with A City-Wide Deployment

The pilot successfully proved the technical viability of a Smart Parking Solution.

However, to fully benefit from a Smart Parking Solution and realize Fort Lauderdale's 2035 Vision, the City will issue an RFP for a city-wide deployment with an Evergreen contract

**13,000
spaces**



**On-Street and Off-Street
(Lots and Garages)**



**All Space Types
(Metered, Non-metered,
EV spaces, etc.)**



Thank You from the Team!

