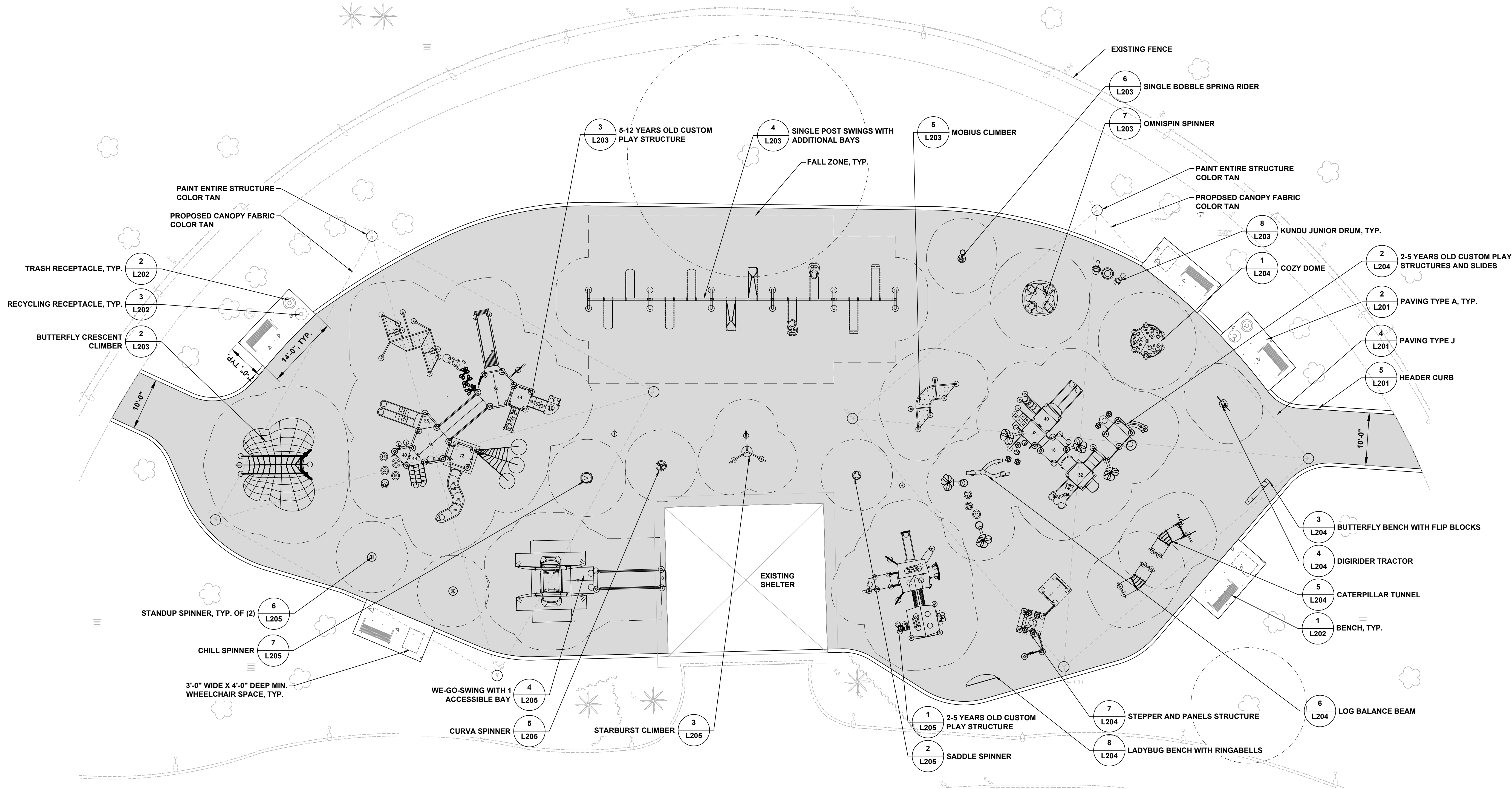


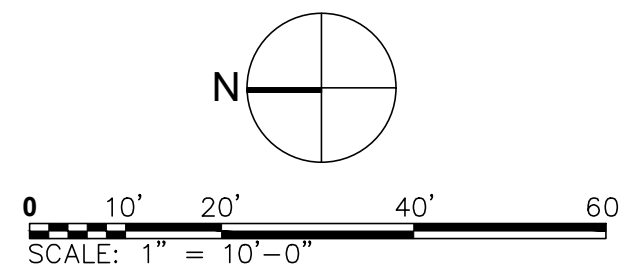
NUMBER AND TYPE OF GROUND LEVEL PLAY COMPONENTS REQUIRED			
5-12 AGE AREA	TOTAL ELEVATED PLAY COMPONENTS	18	
	TOTAL ELEVATED COMPONENTS ACCESSIBLE BY RAMP	1	REQUIRED 0
	TOTAL ELEVATED COMPONENTS ACCESSIBLE BY TRANSFER	17	REQUIRED 9
	TOTAL ACCESSIBLE GROUND LEVEL COMPONENTS SHOWN	10	REQUIRED 6
	TOTAL DIFFERENT TYPES OF GROUND LEVEL COMPONENTS	9	REQUIRED 9
PLAYGROUND EQUIPMENT MEETS THE REQUIREMENT OF FBC ACCESSIBILITY CODE, TABLE 240.2.1.2			

NUMBER AND TYPE OF GROUND LEVEL PLAY COMPONENTS REQUIRED			
2-5 AGE AREA	TOTAL ELEVATED PLAY COMPONENTS	16	
	TOTAL ELEVATED COMPONENTS ACCESSIBLE BY RAMP	0	REQUIRED 0
	TOTAL ELEVATED COMPONENTS ACCESSIBLE BY TRANSFER	16	REQUIRED 8
	TOTAL ACCESSIBLE GROUND LEVEL COMPONENTS SHOWN	50	REQUIRED 5
	TOTAL DIFFERENT TYPES OF GROUND LEVEL COMPONENTS	34	REQUIRED 34
PLAYGROUND EQUIPMENT MEETS THE REQUIREMENT OF FBC ACCESSIBILITY CODE, TABLE 240.2.1.2			



- NOTES:
- SEE L001 FOR PLAYGROUND GENERAL NOTES.
 - SEE PLAYGROUND THEME ILLUSTRATIVE 1 ON L203
 - SUBMIT COLOR SAMPLES FOR PAINT AND CANOPY FABRIC FOR EXISTING SHADE STRUCTURE FOR APPROVAL.

1 PLAYGROUND LAYOUT ENLARGEMENT



NOTICE: THE OFFICIAL RECORD OF THIS SHEET IS THE ELECTRONIC FILE SIGNED AND SEALED UNDER RULE 61G10-11.011, F.A.C.



PROJECT

FLORENCE C. HARDY
PARK
FORT LAUDERDALE
PARKS BOND PROGRAM

CLIENT



PRIME CONSULTANT

AECOM

7650 W. COURTNEY CAMPBELL CAUSEWAY
SUITE 700
TAMPA, FL 33607
813.286.1711 tel 813.287.8591 fax
www.aecom.com

SUB-CONSULTANT

CIVIL

BCC ENGINEERING
305.670.2350 tel
www.bcceng.com

LANDSCAPE

CURTIS + ROGERS DESIGN STUDIO
305.442.1774 tel
www.curtisrogers.com

GEOTECHNICAL SERVICES

GEOSOL, INC.
305.928.4367 tel
www.geosol.net

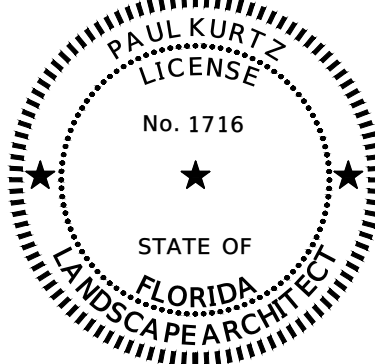
SURVEYOR

PDS, INC.
954.237.7850 tel
www.pds-eng.com

MECHANICAL, PLUMBING AND FIRE PROTECTION

HAMMOND AND ASSOCIATES CONSULTING
954.327.7111 tel
www.hammondengineers.com

REGISTRATION



THIS ITEM HAS BEEN DIGITALLY SIGNED
AND SEALED BY PAUL KURTZ, L.A. USING A
DIGITAL SIGNATURE AND DATE.



PRINTED COPIES OF THIS DOCUMENT ARE
NOT CONSIDERED SIGNED AND SEALED
AND THE SIGNATURE MUST BE VERIFIED
ON ANY ELECTRONIC COPIES.

AECOM Technical Services, INC
7650 West Courtney Campbell Causeway
Tampa, FL 33607-1462

ISSUE/REVISION

I/R	DATE	DESCRIPTION
	09/12/2023	BID DOCUMENTS
	04/05/2023	CONSTRUCTION DOCUMENTS
	04/01/2022	DESIGN DEVELOPMENT
	03/30/2022	SCHEMATIC DESIGN

PROJECT NUMBER

P12651

SHEET TITLE

AMENITY ENLARGEMENT

SHEET NUMBER

L105



- NOTES:
1. THEME FOR PLAYGROUND: PLAYFUL.
 2. COLORS TO BE AS SHOWN. VENDOR'S FULL COLOR RENDERING CAN BE OBTAINED FROM OWNER'S REPRESENTATIVE.

1 PLAYGROUND ILLUSTRATIVE
NTS



- NOTES:
1. BASIS OF DESIGN MOBIUS CLIMBER BY LANDSCAPE STRUCTURES OR APPROVED EQUAL.
 2. FOR BOTH 2-5 AND 5-12 AGE GROUPS.
 3. COLOR(S): AS SHOWN.
 4. REFER MANUFACTURER'S WRITTEN CSI SPECIFICATIONS FOR GENERAL INFORMATION, PRODUCTS AND EXECUTION.

5 MOBIUS CLIMBER
NTS



- NOTES:
1. BASIS OF DESIGN BUTTERFLY CRESCENT CLIMBER BY LANDSCAPE STRUCTURES OR APPROVED EQUAL.
 2. FOR 5-12 AGE GROUP.
 3. COLOR(S): AS SHOWN.
 4. REFER MANUFACTURER'S WRITTEN CSI SPECIFICATIONS FOR GENERAL INFORMATION, PRODUCTS AND EXECUTION.

2 BUTTERFLY CRESCENT CLIMBER
NTS



- NOTES:
1. BASIS OF DESIGN SINGLE BOBBLE SPRING RIDER BY LANDSCAPE STRUCTURES OR APPROVED EQUAL.
 2. FOR BOTH 2-5 AND 5-12 AGE GROUPS.
 3. COLOR(S): AS SHOWN.
 4. REFER MANUFACTURER'S WRITTEN CSI SPECIFICATIONS FOR GENERAL INFORMATION, PRODUCTS AND EXECUTION.

6 SINGLE BOBBLE SPRING RIDER
NTS



- NOTES:
1. BASIS OF DESIGN CUSTOM STRUCTURE BY LANDSCAPE STRUCTURES OR APPROVED EQUAL.
 2. FOR 5-12 AGE GROUP.
 3. COLOR(S): AS SHOWN.
 4. REFER MANUFACTURER'S WRITTEN CSI SPECIFICATIONS FOR GENERAL INFORMATION, PRODUCTS AND EXECUTION.

3 5-12 YEARS OLD CUSTOM PLAY STRUCTURE
NTS



- NOTES:
1. BASIS OF DESIGN OMNISPIN SPINNER BY LANDSCAPE STRUCTURES OR APPROVED EQUAL.
 2. FOR BOTH 2-5 AND 5-12 AGE GROUPS.
 3. ADA ACCESSIBLE.
 4. HIGH-BACKED SEATS.
 5. MOLDED FROM DURABLE, COLORFAST POLYETHYLENE COLOR(S): AS SHOWN.
 6. REFER MANUFACTURER'S WRITTEN CSI SPECIFICATIONS FOR GENERAL INFORMATION, PRODUCTS AND EXECUTION.

7 OMNISPIN SPINNER
NTS



- NOTES:
1. BASIS OF DESIGN LANDSCAPE STRUCTURES SINGLE POST SWINGS 52" BURY OR APPROVED EQUAL.
 2. SWINGS TO HAVE FIVE BAYS. THE FIRST TWO BAYS CLOSEST TO TO THE 5-12 PLAY AREA TO HAVE 2 BELT SEATS EACH. THE THIRD BAY TO HAVE 2 MOLDED BUCKET SEATS, THE FOURTH BAY TO HAVE 2 MOLDED HARNESS SEATS, THE FIFTH BAY TO HAVE 2 BUCKET SEATS.
 3. ALL SEATS TO BE MOUNTED WITH ANTI-WRAP CHAIN.
 4. PROVIDE 5" DIAMETER STEEL FRAME WITH 5" DIAMETER ALUMINUM BEAM - HEIGHT 8'.
 5. DIRECT BURY AND SECURE BELOW SAFETY SURFACING PER MANUFACTURER'S INSTRUCTIONS.
 6. FOR BOTH 2-5 AND 5-12 AGE GROUPS.
 7. COLOR(S): AS SHOWN.
 8. REFER MANUFACTURER'S WRITTEN CSI SPECIFICATIONS FOR GENERAL INFORMATION, PRODUCTS AND EXECUTION.

4 SINGLE POST SWINGS WITH ADDITIONAL BAYS
NTS



- NOTES:
1. BASIS OF DESIGN KUNDU JUNIOR DRUM BY LANDSCAPE STRUCTURES OR APPROVED EQUAL.
 2. FOR 2-5 AGE GROUP.
 3. COLOR(S): AS SHOWN.
 4. REFER MANUFACTURER'S WRITTEN CSI SPECIFICATIONS FOR GENERAL INFORMATION, PRODUCTS AND EXECUTION.

8 KUNDU JUNIOR DRUM
NTS

PROJECT

FLORENCE C. HARDY
PARK
FORT LAUDERDALE
PARKS BOND PROGRAM

CLIENT

PARKS & RECREATION
City of Fort Lauderdale

PRIME CONSULTANT

AECOM

7650 W. COURTNEY CAMPBELL CAUSEWAY
SUITE 700
TAMPA, FL 33607
813.286.1711 tel 813.287.8591 fax
www.aecom.com

SUB-CONSULTANT

CIVIL

BCC ENGINEERING
305.670.2350 tel
www.bcceng.com

LANDSCAPE

CURTIS + ROGERS DESIGN STUDIO
305.442.1774 tel
www.curtisrogers.com

GEOTECHNICAL SERVICES

GEOSOL, INC.
305.828.4367 tel
www.geosol.net

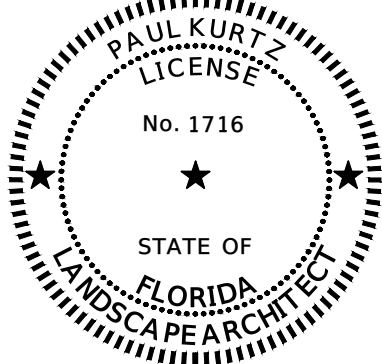
SURVEYOR

PDS, INC.
954.237.7850 tel
www.pds-eng.com

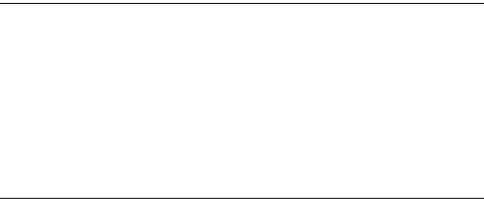
MECHANICAL, PLUMBING AND FIRE PROTECTION

HAMMOND AND ASSOCIATES CONSULTING
954.327.7111 tel
www.hammondengineers.com

REGISTRATION



THIS ITEM HAS BEEN DIGITALLY SIGNED
AND SEALED BY PAUL KURTZ, L.A. USING A
DIGITAL SIGNATURE AND DATE.



PRINTED COPIES OF THIS DOCUMENT ARE
NOT CONSIDERED SIGNED AND SEALED
AND THE SIGNATURE MUST BE VERIFIED
ON ANY ELECTRONIC COPIES.

AECOM Technical Services, INC

7650 West Courtney Campbell Causeway
Tampa, FL 33607-1462

ISSUE/REVISION

I/R	DATE	DESCRIPTION
	09/12/2023	BID DOCUMENTS
	04/05/2023	CONSTRUCTION DOCUMENTS
	04/01/2022	DESIGN DEVELOPMENT
	03/30/2022	SCHEMATIC DESIGN

PROJECT NUMBER

P12651

SHEET TITLE

LANDSCAPE SITE DETAILS

SHEET NUMBER

L203



- NOTES:
1. BASIS OF DESIGN COZY DOME BY LANDSCAPE STRUCTURES OR APPROVED EQUAL.
 2. FOR 2-5 AGE GROUP.
 3. COLOR(S): AS SHOWN.
 4. REFER MANUFACTURER'S WRITTEN CSI SPECIFICATIONS FOR GENERAL INFORMATION, PRODUCTS AND EXECUTION.

1 COZY DOME
NTS



- NOTES:
1. BASIS OF DESIGN CATERPILLAR TUNNEL BY LANDSCAPE STRUCTURES OR APPROVED EQUAL.
 2. FOR 6-23 MONTH AGE GROUP.
 3. COLOR(S): AS SHOWN.
 4. REFER MANUFACTURER'S WRITTEN CSI SPECIFICATIONS FOR GENERAL INFORMATION, PRODUCTS AND EXECUTION.

5 CATERPILLAR TUNNEL
NTS



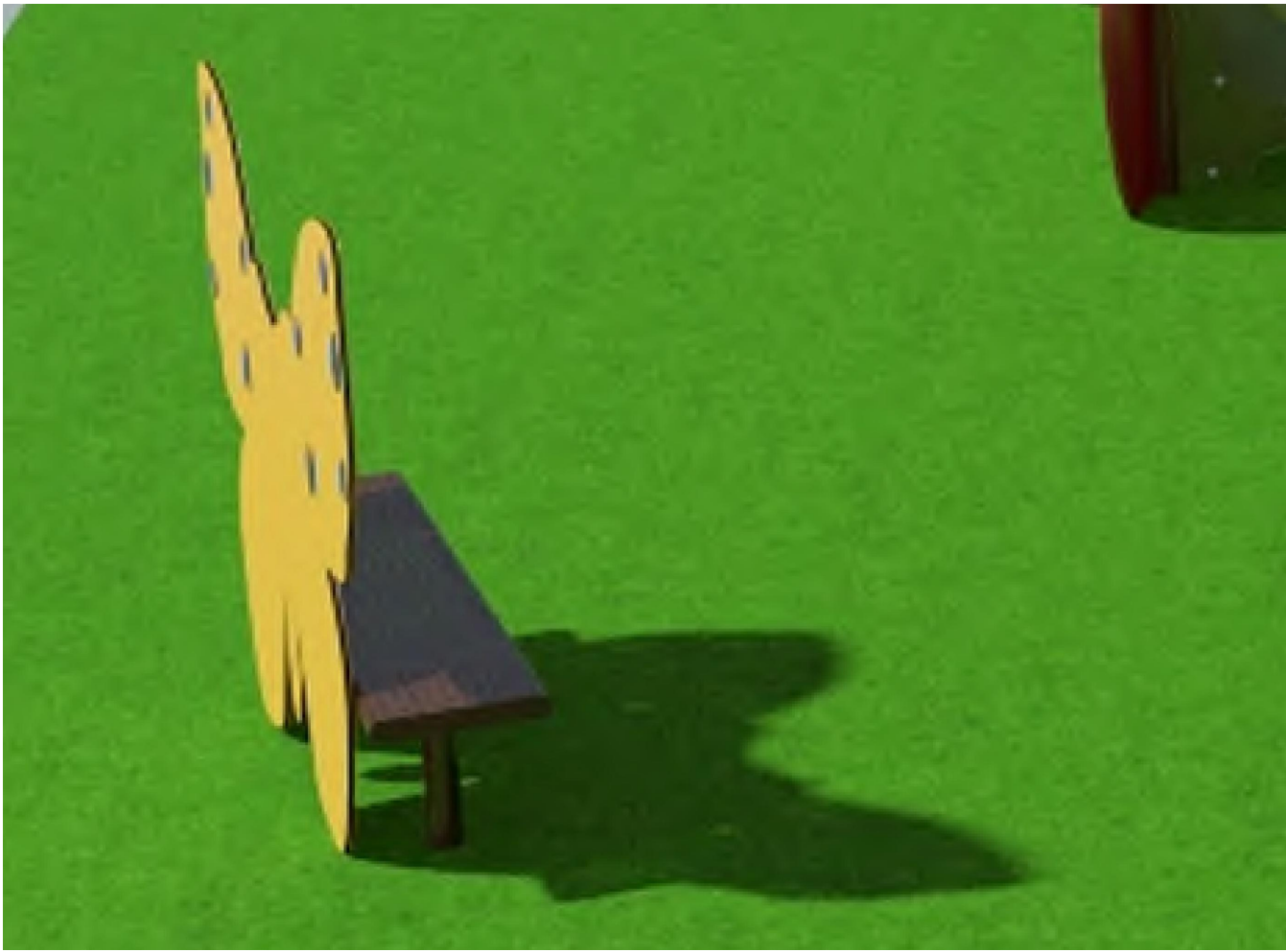
- NOTES:
1. BASIS OF DESIGN CUSTOM PLAY STRUCTURE BY LANDSCAPE STRUCTURES OR APPROVED EQUAL.
 2. FOR 2-5 AGE GROUP.
 3. COLOR(S): AS SHOWN.
 4. REFER MANUFACTURER'S WRITTEN CSI SPECIFICATIONS FOR GENERAL INFORMATION, PRODUCTS AND EXECUTION.

2 2-5 YEARS OLD CUSTOM PLAY STRUCTURES AND SLIDES
NTS



- NOTES:
1. BASIS OF DESIGN LOG BALANCE BEAM BY LANDSCAPE STRUCTURES OR APPROVED EQUAL.
 2. FOR 5-12 AGE GROUP.
 3. DURABLE, PRE-CAST CONCRETE.
 4. SPLIT BEAM OFFERS CHOICE IN PATH - A "HIGH ROAD" AND A "LOW ROAD".
 5. HALF-LOG, PEELED BARK APPEARANCE.
 6. COLOR(S): AS SHOWN, HAND-PAINTED BEAM.
 4. REFER MANUFACTURER'S WRITTEN CSI SPECIFICATIONS FOR GENERAL INFORMATION, PRODUCTS AND EXECUTION.

6 LOG BALANCE BEAM
NTS



- NOTES:
1. BASIS OF DESIGN BUTTERFLY BENCH WITH FLIP BLOCKS BY LANDSCAPE STRUCTURES OR APPROVED EQUAL.
 2. FOR 2-5 AGE GROUP.
 3. COLOR(S): AS SHOWN.
 4. REFER MANUFACTURER'S WRITTEN CSI SPECIFICATIONS FOR GENERAL INFORMATION, PRODUCTS AND EXECUTION.

3 BUTTERFLY BENCH WITH FLIP BLOCKS
NTS



- NOTES:
1. BASIS OF DESIGN STEPPER AND PANELS STRUCTURE BY LANDSCAPE STRUCTURES OR APPROVED EQUAL.
 2. FOR 6-23 MONTH AGE GROUP.
 3. COLOR(S): AS SHOWN.
 4. REFER MANUFACTURER'S WRITTEN CSI SPECIFICATIONS FOR GENERAL INFORMATION, PRODUCTS AND EXECUTION.

7 STEPPER AND PANELS STRUCTURE
NTS



- NOTES:
1. BASIS OF DESIGN DIGIRIDER TRACTOR BY LANDSCAPE STRUCTURES OR APPROVED EQUAL.
 2. FOR 2-5 AGE GROUP.
 3. COLOR(S): AS SHOWN.
 4. REFER MANUFACTURER'S WRITTEN CSI SPECIFICATIONS FOR GENERAL INFORMATION, PRODUCTS AND EXECUTION.

4 DIGIRIDER TRACTOR
NTS



- NOTES:
1. BASIS OF DESIGN LADYBUG BENCH WITH RINGABELLS BY LANDSCAPE STRUCTURES OR APPROVED EQUAL.
 2. FOR 2-5 AGE GROUP.
 3. COLOR(S): AS SHOWN.
 4. REFER MANUFACTURER'S WRITTEN CSI SPECIFICATIONS FOR GENERAL INFORMATION, PRODUCTS AND EXECUTION.

8 LADYBUG BENCH WITH RINGABELLS
NTS

PROJECT

FLORENCE C. HARDY
PARK
FORT LAUDERDALE
PARKS BOND PROGRAM

CLIENT

PARKS & RECREATION
City of Fort Lauderdale

PRIME CONSULTANT

AECOM

7650 W. COURTNEY CAMPBELL CAUSEWAY
SUITE 700
TAMPA, FL 33607
813.286.1711 tel 813.287.8591 fax
www.aecom.com

SUB-CONSULTANT

CIVIL

BCC ENGINEERING
305.670.2350 tel
www.bcceng.com

LANDSCAPE

CURTIS + ROGERS DESIGN STUDIO
305.442.1774 tel
www.curtisrogers.com

GEOTECHNICAL SERVICES

GEOSOL, INC.
305.828.4367 tel
www.geosol.net

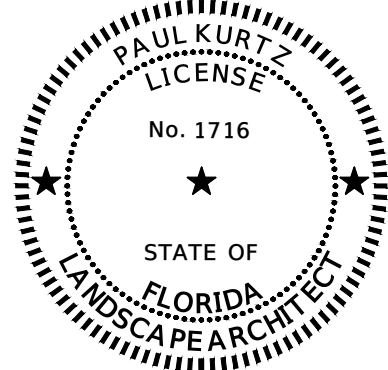
SURVEYOR

PDS, INC.
954.237.7850 tel
www.pds-eng.com

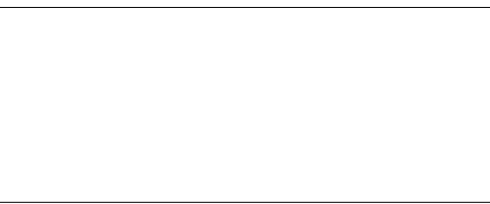
MECHANICAL, PLUMBING AND FIRE PROTECTION

HAMMOND AND ASSOCIATES CONSULTING
954.327.7111 tel
www.hammondengineers.com

REGISTRATION



THIS ITEM HAS BEEN DIGITALLY SIGNED
AND SEALED BY PAUL KURTZ, L.A. USING A
DIGITAL SIGNATURE AND DATE.



PRINTED COPIES OF THIS DOCUMENT ARE
NOT CONSIDERED SIGNED AND SEALED
AND THE SIGNATURE MUST BE VERIFIED
ON ANY ELECTRONIC COPIES.

AECOM Technical Services, INC
7650 West Courtney Campbell Causeway
Tampa, FL 33607-1462

ISSUE/REVISION

I/R	DATE	DESCRIPTION
	09/12/2023	BID DOCUMENTS
	04/05/2023	CONSTRUCTION DOCUMENTS
	04/01/2022	DESIGN DEVELOPMENT
	03/30/2022	SCHEMATIC DESIGN

PROJECT NUMBER

P12651

SHEET TITLE

LANDSCAPE SITE DETAILS

SHEET NUMBER

L204

NOTICE: THE OFFICIAL RECORD OF THIS SHEET IS THE ELECTRONIC FILE SIGNED AND SEALED UNDER RULE 61G10-11.011, F.A.C.



- NOTES:
1. BASIS OF DESIGN CUSTOM PLAY STRUCTURE BY LANDSCAPE STRUCTURES OR APPROVED EQUAL.
 2. FOR 2-5 AGE GROUP.
 3. ADA ACCESSIBLE.
 4. COLOR(S): AS SHOWN.
 5. REFER MANUFACTURER'S WRITTEN CSI SPECIFICATIONS FOR GENERAL INFORMATION, PRODUCTS AND EXECUTION.

1 2-5 YEARS OLD CUSTOM PLAY STRUCTURE
NTS



- NOTES:
1. BASIS OF DESIGN CURVA SPINNER BY LANDSCAPE STRUCTURES OR APPROVED EQUAL.
 2. FOR 5-12 AGE GROUP.
 3. COLOR(S): AS SHOWN.
 4. REFER MANUFACTURER'S WRITTEN CSI SPECIFICATIONS FOR GENERAL INFORMATION, PRODUCTS AND EXECUTION.

5 CURVA SPINNER
NTS



- NOTES:
1. BASIS OF DESIGN SADDLE SPINNER BY LANDSCAPE STRUCTURES OR APPROVED EQUAL.
 2. FOR BOTH 2-5 AND 5-12 AGE GROUPS.
 3. DURABLE POLYETHYLENE SEAT IS SET AT 5-DEGREE ANGLE.
 4. INCLUDES EASY-GRASP HANDGRIPS.
 5. LOW MAINTENANCE MATERIALS AND SEALED BEARINGS COLOR(S): AS SHOWN.
 6. REFER MANUFACTURER'S WRITTEN CSI SPECIFICATIONS FOR GENERAL INFORMATION, PRODUCTS AND EXECUTION.

2 SADDLE SPINNER
NTS



- NOTES:
1. BASIS OF DESIGN STANDUP SPINNER BY LANDSCAPE STRUCTURES OR APPROVED EQUAL.
 2. FOR 5-12 AGE GROUP.
 3. COLOR(S): AS SHOWN.
 4. REFER MANUFACTURER'S WRITTEN CSI SPECIFICATIONS FOR GENERAL INFORMATION, PRODUCTS AND EXECUTION.

6 STANDUP SPINNER
NTS



- NOTES:
1. BASIS OF DESIGN STARBURST CLIMBER BY LANDSCAPE STRUCTURES OR APPROVED EQUAL.
 2. FOR 5-12 AGE GROUP.
 3. COLOR(S): AS SHOWN.
 4. REFER MANUFACTURER'S WRITTEN CSI SPECIFICATIONS FOR GENERAL INFORMATION, PRODUCTS AND EXECUTION.

3 STARBURST CLIMBER
NTS



- NOTES:
1. BASIS OF DESIGN CHILL SPINNER BY LANDSCAPE STRUCTURES OR APPROVED EQUAL.
 2. FOR 5-12 AGE GROUP.
 3. TEXTURED RUBBER BELTING. LOW MAINTENANCE MATERIALS AND SEALED BEARING.
 4. COLOR(S): AS SHOWN, HAND-PAINTED.
 5. REFER MANUFACTURER'S WRITTEN CSI SPECIFICATIONS FOR GENERAL INFORMATION, PRODUCTS AND EXECUTION.

7 CHILL SPINNER
NTS



- NOTES:
1. BASIS OF DESIGN WE-GO-SWING WITH 1 ACCESSIBLE BAY BY LANDSCAPE STRUCTURES OR APPROVED EQUAL.
 2. FOR BOTH 2-5 AND 5-12 AGE GROUPS.
 3. ADA ACCESSIBLE.
 4. COLOR(S): AS SHOWN.
 5. REFER MANUFACTURER'S WRITTEN CSI SPECIFICATIONS FOR GENERAL INFORMATION, PRODUCTS AND EXECUTION.

4 WE-GO-SWING WITH 1 ACCESSIBLE BAY
NTS

PROJECT
FLORENCE C. HARDY
PARK
FORT LAUDERDALE
PARKS BOND PROGRAM

CLIENT
PARKS & RECREATION
City of Fort Lauderdale

PRIME CONSULTANT
AECOM
7650 W. COURTNEY CAMPBELL CAUSEWAY
SUITE 700
TAMPA, FL 33607
813.286.1711 tel 813.287.8591 fax
www.aecom.com
SUB-CONSULTANT

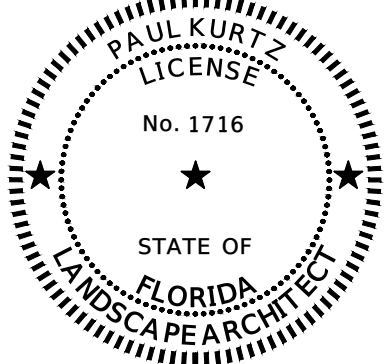
CIVIL
BCC ENGINEERING
305.670.2350 tel
www.bcceng.com
LANDSCAPE
CURTIS + ROGERS DESIGN STUDIO
305.442.1774 tel
www.curtisrogers.com

GEOTECHNICAL SERVICES
GEOSOL, INC.
305.828.4367 tel
www.geosol.net

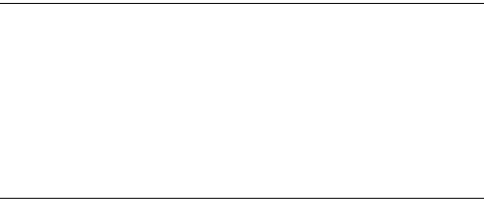
SURVEYOR
PDS, INC.
954.237.7850 tel
www.pds-eng.com

MECHANICAL, PLUMBING AND FIRE PROTECTION
HAMMOND AND ASSOCIATES CONSULTING
954.327.7111 tel
www.hammondengineers.com

REGISTRATION



THIS ITEM HAS BEEN DIGITALLY SIGNED
AND SEALED BY PAUL KURTZ, L.A. USING A
DIGITAL SIGNATURE AND DATE.



PRINTED COPIES OF THIS DOCUMENT ARE
NOT CONSIDERED SIGNED AND SEALED
AND THE SIGNATURE MUST BE VERIFIED
ON ANY ELECTRONIC COPIES.

AECOM Technical Services, INC
7650 West Courtney Campbell Causeway
Tampa, FL 33607-1462

ISSUE/REVISION		
	09/12/2023	BID DOCUMENTS
	04/05/2023	CONSTRUCTION DOCUMENTS
	04/01/2022	DESIGN DEVELOPMENT
	03/30/2022	SCHEMATIC DESIGN
I/R	DATE	DESCRIPTION

PROJECT NUMBER
P12651

SHEET TITLE
LANDSCAPE SITE DETAILS

SHEET NUMBER
L205

NOTICE: THE OFFICIAL RECORD OF THIS SHEET IS THE ELECTRONIC FILE SIGNED AND SEALED UNDER RULE 61G10-11.011, F.A.C.