

JANUARY 20, 2023



STATEMENT OF QUALIFICATIONS

**CONSULTANT SERVICES FOR
FORT LAUDERDALE EXECUTIVE
AIRPORT RUNWAY 9-27
PAVEMENT REHABILITATION**
RFQ # 12740-636

SUBMITTED TO
CITY OF FORT LAUDERDALE

SUBMITTED BY
MICHAEL BAKER INTERNATIONAL



8/29/2023

BidSync

Michael Baker
INTERNATIONAL

CAM #23-0883
Exhibit 5
Page 1 of 65

p. 123

TABLE OF CONTENTS

Executive Summary.....2

Firm Qualifications and Experience.....4

History and Past Performance of the Firm.....7

Approach to Scope of Work.....11

Qualification and Experience for the Project Team.....17

Minority/Women (M/WBE) Participation.....28

Subconsultants.....29

Required Forms.....30

Hartsfield-Jackson Atlanta International Airport (ATL) - Taxiway and Runway 9L-27R





EXECUTIVE SUMMARY

Michael Baker International, Inc., a leading provider of engineering and consulting services, including design, planning, architectural, environmental, construction and program management, has been solving some of the world’s most complex infrastructure challenges for more than 80 years with a legacy of expertise, experience, innovation and integrity.

Based in Pennsylvania and with nearly 100 offices nationwide, we partner with clients on everything from roads, bridges, tunnels, mass transit, and airports, to water treatment plants, arctic oil pipelines, environmental restoration and specialized overseas construction. We serve as a trusted adviser to the communities we serve, making them safer, more accessible, more sustainable and more prosperous.

OFFICES AND KEY INDIVIDUALS

With our flagship office located in Moon Township, PA, Michael Baker’s office in Jacksonville will be the prime office servicing this contract. **All client services for the City of Fort Lauderdale will be administered out of our Jacksonville office by Project Manager Brian Russell, PE, with our Deputy Project Manager John Neff serving as our “boots on the ground” in Fort Lauderdale.** In addition to Project Principal Mark Kistler, PE in Tampa, further key individuals for this project can be seen at a glance below.

PRE-DESIGN/PLANNING SERVICES	DESIGN SERVICES	CONSTRUCTION SERVICES
Aviation Planning Phil Jufko (Tampa, FL)	Civil Airfield Tom Schilling, PE (Jacksonville, FL)	Construction Quality Control John Neff, PE (Fort Lauderdale, FL)
Environmental Mariben Andersen (Tampa, FL)	Pavement Design Quintin Watkins, PE (Norcross, GA)	Construction Management Bill Maughan (West Palm Beach, FL)
Pavement Assessment Scott Murrell, PE (Fort Lauderdale, FL)	Jeff Gagnon, PE (Raleigh, NC)	DBE Coordination Sheryl Dickey (Fort Lauderdale, FL)
Geotechnical Raj Krishnasamy, PE (West Palm Beach, FL)	Airfield Electrical Amy Champagne Baker, PE (Coral Springs, FL)	
Survey Tim Gray, PSM, CFM (Pompano Beach, FL)	Grant Assistance Marcos Souza, PE (Maitland, FL)	
Stakeholder Coordination Sheryl Dickey (Fort Lauderdale, FL)		

KEY ELEMENTS

The Michael Baker team is focused on delivering a Runway pavement that is designed with the latest technology to provide a long lasting, durable pavement. We will accomplish that by completing an intensive data collection and analytics process. Our design team will provide custom solutions for your Runway and with precision across the length of the runway. This is not a one size fits all. Throughout the length of a RW, the pavement experiences different loadings, traffic patterns, and soil conditions. Providing a singular solution across an entire RW is a thing of the

past. With Michael Baker's data collection technology the engineering team is able to pinpoint solutions and provide custom designs and the justification necessary for solutions to be funded by grant agencies.

Supporting Michael Baker in our pavement analytics is the Immediate Past FAA Manager of Airport Pavement Research & Development, Greg Gagnon. Greg left the FAA after 15 years to join Michael Baker in 2021, to provide our clients with the most advanced solutions, using technologies and experience to provide unique pavement rehabilitation solutions. His knowledge places our clients in a good position for approach justification and acceptance as well as your confidence in the solution proposed.

The solutions generated through our analytics phase will be backed up with past experience on FXE and on this specific RW. Team members John Neff, P.E. and Tom Schilling, PE were both part of the previous rehabilitations on RW 9-27. They will bring this experience to assist with the rehabilitation alternatives and understanding of the airport operations. In the approach section of this proposal, you will see read about some of the known items that were completed with the last rehabilitation that need to be identified to avoid construction delays and/or potential claims.

Bringing all of these experts and localized experience to the project, along with an experienced Project Manager, Brian Russell, PE, we will be focused on ensuring schedules are met and solutions are within budgetary constraints. Michael Baker will be your partner from beginning to end on this project.



FIRM QUALIFICATIONS AND EXPERIENCE



FIRM QUALIFICATIONS AND EXPERIENCE

For 82 years, Michael Baker has provided full in-house services to airports worldwide, serving as an expert aviation consultant to many airports throughout the country, ranking 28th nationally in Airport-related services by Engineering News-Record and having delivered services to more than 350 airports nationwide.

Michael Baker is a leading global provider of engineering and consulting services which includes aviation planning, architectural, environmental, construction, and other services, and has nearly 3,000 employees in over 100 offices across the US and internationally. We have over 140 professionals dedicated solely to aviation who have successfully completed similar airfield projects.

Our reputation for innovation, quality, and cost effective services has earned us the trust of our clients. In most cases, we have assisted on a multi-year basis, either as the airport's general consultant, or as a result of being selected repeatedly on a project-by-project basis. The Michael Baker airport client base has steadily grown through the years, and we have since become one of the major providers of airport design services in the state.

AVIATION CONSULTING YOU CAN COUNT ON

Michael Baker has performed engineering services for airfield projects at more than 350 airports across the country. This includes 126 runway, 124 taxiway, 80 apron, and 20 helipad projects in the last 10 years.

Michael Baker is a large consulting firm bringing the right balance of vast professional resources and local presence. We have completed 3,321 airport projects nationally in the past 10 years. These projects range from small GA airports, to the busiest airport in the world – Hartsfield-Jackson Atlanta International Airport where we currently hold a general consulting services contract.

2022 ENR RANKINGS

THE TOP
500
DESIGN FIRMS

- 28** Top 500 Design Firms
- 17** Top Pure Designers
- 5** Bridges
- 6** Dams and Reservoirs
- 12** Water Supply
- 13** Transportation
- 15** Construction Management
- 16** Highways
- 17** Airports
- 24** Mass Transit and Rail

National Leaders in Aviation Design and Engineering

6000+ professional staff
90+ offices
82 years of aviation design
200+ airports served worldwide
Ranked 17th in airport design by ENR

Combined with Nationally Ranked Aviation Consultants

Full-Service multi-disciplined firm
\$30M aviation contracts awarded annually



specialized aviation planning experience expertise in master planning throughout the U.S.

Local Manpower with National Support



6000+ network of staff



140+ dedicated aviation staff

PAST PROJECTS AT A GLANCE

Projects similar in size and scope to the one proposed by the City of Fort Lauderdale can be seen below. Additional details for each project is located in Tab 3: History and Past Performance.

Project	Airport	Agency	Time and Budget Requirements Met
Runway 7L-25R Reconstruction	Daytona International Airport (DAB)	Volusia County	✓
Runway 14-32 Rehabilitation	Palm Beach International Airport (PBI)	Palm Beach County Department of Airports	✓
Runway 7-25 Rehabilitation	Gwinnett County Airport (LZU)	Gwinnett County	✓
Runway 15R-33L Safety Area Improvements, Pavement Rehabilitation/ Airfield Standards	Baltimore/Washington International Thurgood Marshall Airport (BWI)	Maryland Aviation Administration	✓
Taxiway and Runway 9L-27R Pavement Replacement and Grading	Hartsfield-Jackson Atlanta International Airport (ATL)	City of Atlanta Aviation Department	✓
Runway 11-29 Rehabilitation	Northwest Alabama Regional Airport (MSL)	Northwest Alabama Regional Airport Authority	✓
Runway 9R-27L Rehabilitation Design, Bidding, and Construction Management	Cecil Airport (VQQ)	Jacksonville Aviation Authority	✓
Runway 18L-36R Rehabilitation Design, Bidding, and Construction Management	Cecil Airport (VQQ)	Jacksonville Aviation Authority	✓

SUSTAINABLE BUSINESS PRACTICES



The Michael Baker team understands our responsibility to be an example to others in efforts to conserve resources and “go green.” We apply the same expertise that we offer our clients for sustainability to our own daily practices and operations. Collaboratively, we identify and implement options that reduce energy use in our offices, reduce waste, and support employee access to alternative transit or flex schedules. Operations at the majority of our facilities demonstrate our commitment to environmentally-friendly practices. We implement and fully support programs for the purchase and use of recycled paper for internal and external utilization on projects, and the recycling of any waste product, including paper, ink and toner cartridges, aluminum, cardboard, batteries, and other electronic devices which are unusable. When we upgrade our electronics and office equipment, we donate or resell used furniture and electronics to support reuse and reduction of waste. We encourage paper-saving procedures to our clients whenever feasible and, to the extent possible, use recyclable materials when facilitating public meetings. Michael Baker’s designers understand the environmental context in which they are working and how to incorporate sustainable design principles into every project.

BUSINESS STRUCTURE AND FIRM INFORMATION

Michael Baker is led by our CEO, Brian Lutes and COO, Rich Driggs. The firm is divided into seven regions in the United States, with each Region led by a Senior Vice President as the Regional Director. Office Executives report directly to the Regional Directors. The Fort Lauderdale office is led by the Brian Russell, PE, as the Vice President. Fort

Lauderdale is part of the Southeast Region, reporting to Regional Director, Tommy Montgomery, PE. The National Lead for Aviation is Mark Kistler, PE, our proposed QA/QC Manager on this contract. The nature of a GEC contract will involve all of our practice leads at various times. These individuals are leaders in their fields and can be brought in to help with any project.

Firm Legal Name		Contact Person	Address
Michael Baker International, Inc.		Brian Russell, PE	110 E Broward Blvd Suite 1700 Fort Lauderdale, FL 33301
Phone	Fax	Email	Website
904-380-2507	N/A	brussell@mbakerintl.com	www.mbakerintl.com
Years in Business	Structure	Firm Size	
82	Corporation; Registered in State of Florida	Management Staff: 224 Technical Staff: 2,678 Support Staff: 658	

FIRM LICENSE INFORMATION

The screenshot shows the DBPR website with the following details:

- Licensee Information:**
 - Name: MICHAEL BAKER INTERNATIONAL, INC. (Primary Name)
 - Main Address: 500 GRANT STREET, SUITE 5400, PITTSBURGH Pennsylvania 15219
 - County: OUT OF STATE
- License Information:**
 - License Type: Registry
 - Rank: Registry
 - License Number: 28861
 - Status: Current
 - Licensure Date: 10/21/2009
 - Expires:

YOUR PROJECT MANAGER



BRIAN RUSSELL, PE

Brian has over 20 years experience in managing airport infrastructure projects. He specializes in the field of Aviation, for airside and landside features. His experience includes management and development of plans for runway rehabilitation, taxiway construction, apron construction, runway extensions, security fencing, perimeter roads, landside circulation, parking, rental car facilities, fuel farms, pavement management, and ARFF. In addition, he is an expert at procuring and managing FAA and DOT grant programs. His diverse experience in the aviation field provides a well-rounded project manager that is technical and sees the big picture.

- ✓ Experience: Brian has managed similar projects for airport clients.
- ✓ Responsiveness: Returns calls and inquiries quickly - we are an extension of your staff!
- ✓ Cost Containment: Value engineer to ensure the project stays on or below budget.
- ✓ Practical Design/Innovation: Solutions that fit FXE's vision and budget.
- ✓ Schedule: Advance the project and monitoring the progress to on-time delivery.
- ✓ Dedicated: Hands-on approach to the project from initiation through construction.



HISTORY AND PAST PERFORMANCE OF THE FIRM



HISTORY AND PAST PERFORMANCE OF THE FIRM



DAYTONA INTERNATIONAL AIRPORT (DAB) - RUNWAY 7L-25R RECONSTRUCTION

DAYTONA BEACH, FLORIDA | COMPLETED: 2015

The project included the reconstruction of the 150x 10,900-ft asphalt runway, including the intersection of both commercial runways. The project utilized temporary displaced thresholds to maintain commercial operations. Services performed by Michael Baker include: design, bidding, and construction administration.

Project Relevance: Rehabilitation of Runway, Major operational impact, RW to RW Intersection, Asphalt Rehabilitation, Same Project Manager

Lessons Learned: Multiple phases and coordination results with tenants; Put the ILS into a practice approach only mode so the ILS would not have to be recertified upon completion, to save time and meet tenant needs; Utilized a Concrete Keel section to meet loading requirements.

Cost: \$20,500,000 (Construction); \$750,000 (Fee)



PALM BEACH INTERNATIONAL AIRPORT (PBI)- RUNWAY 14-32 REHABILITATION

PALM BEACH, FLORIDA | COMPLETED: 2010

The project involved the milling and asphalt resurfacing of the 150x 7,000-ft runway and included resurfacing within the intersection of the two commercial service runways. Services performed by Michael Baker include: design, bidding, and construction administration.

Project Relevance: Rehabilitation of Runway, Major operational impact, RW to RW Intersection, Asphalt Rehabilitation, Same Project Manager

Lessons Learned: Utilized a seal coating for shoulders; Time and cost savings.

Cost: \$2,000,000 (Construction); \$310,000 (Fee)



GWINNETT COUNTY AIRPORT (LZU) - RUNWAY 7-25 REHABILITATION

GWINNETT COUNTY, GEORGIA | COMPLETED: 2020

The project included three separate construction phases. Phase 2 was the Realignment of Taxiway A. Phase 3 was the Rehabilitation of Runway 7-25. Runway 7-25 received partial reconstruction, mill and overlay, and pavement grooving. The runway lights and signs were replaced. **The project was named 2021 General Aviation Airport Project of the Year, Georgia Airports Association.** Services performed by Michael Baker include: design, bidding, and construction administration.

Project Relevance: Rehabilitation of Runway, Busy GA airport, Major operational impact, Multiple TW to RW Intersections, Asphalt Rehabilitation

Lessons Learned: Expedited RW closure with tenants.

Cost: \$19,600,000 (Construction); \$1,800,000 (Fee)



BALTIMORE/WASHINGTON INTERNATIONAL THURGOOD MARSHALL AIRPORT (BWI) - RUNWAY 15R-33L SAFETY AREA IMPROVEMENTS, PAVEMENT REHABILITATION/AIRFIELD STANDARDS

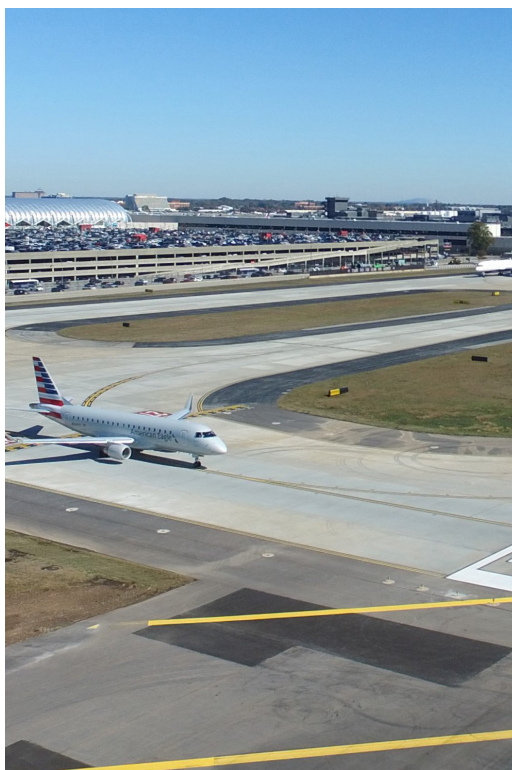
BALTIMORE, MARYLAND | COMPLETED: 2017

Michael Baker provided design and construction phase services for the Runway 15R-33L Safety Area Improvements, Pavement Rehabilitation and Standards Compliance Program at BWI. In order to meet the 2015 mandated deadline, the Runway 15R-33L program was divided into five separate construction packages, each requiring both design and construction administration by Michael Baker. Services performed by Michael Baker include: design, bidding, and construction administration.

Project Relevance: Rehabilitation of Runway, Major operational impact, RW to RW Intersection, Asphalt Rehabilitation, 24/7 paving operation at RW to RW intersection, Same Project Manager

Lessons Learned: Multiple phases across 4 bid packages; Significant coordination with airport operations and tenants; Project components consisted of runway reconstruction (including shifting the runway centerline), stream restoration, RSA and pavement standards compliance

Cost: \$126,650,000 (Construction); \$3,609,921 (Fee)



HARTSFIELD-JACKSON ATLANTA INTERNATIONAL AIRPORT (ATL) - TAXIWAY AND RUNWAY 9L-27R PAVEMENT REPLACEMENT AND GRADING

ATLANTA, GEORGIA | COMPLETED: 2022

Michael Baker prepared pavement designs for the reconstruction of Runway 9L-27R at ATL. The runway is the Airport's longest runway. The reconstruction was strategically executed in conjunction with the enabling projects associated with the construction of the 9L End-Around Taxiway and runway safety improvements. The team minimized operational impacts through pre-construction work and a short construction schedule with four phases. Services performed by Michael Baker include: design, bidding, and construction administration.

Project Relevance: Rehabilitation of Runway, Major operational impact, PCC Rehabilitation

Lessons Learned: Multiple phases and coordination results with tenants; Replaced RW ends and Keel section

Cost: \$493,784 (Fee)



NORTHWEST ALABAMA REGIONAL AIRPORT (MSL) - RUNWAY 11-29 REHABILITATION

MUSCLE SHOALS, ALABAMA | COMPLETED: 2021

Michael Baker provided engineering services for the rehabilitation of Runway 11-29 at MSL. The project consisted of milling the runway and connector taxiways up to the hold line one inch and overlaying with 3-inch asphalt and grooving and changing the runway designation to 12-30. The runway is 6,694 feet by 150 feet. All runway guidance signs were replaced with new LED signs. A 500-foot section along the north half of the runway was removed to correct the runway slope. Services performed by Michael Baker include: preliminary and final design, bid assistance, construction administration, and grant management.

Project Relevance: Rehabilitation of Runway, Major operational impact, RW to RW Intersection, Asphalt Rehabilitation

Lessons Learned: Multiple phases and coordination with tenants; Coordinated a runway designation change with project.

Cost: \$5,124,152 (Construction); \$169,944 (Fee)



CECIL AIRPORT (VQQ) - RUNWAY 9R-27L REHABILITATION DESIGN, BIDDING, AND CONSTRUCTION MANAGEMENT

JACKSONVILLE, FLORIDA | COMPLETED: 2012

Michael Baker provided design, bidding, inspection, and construction administration and management services for the rehabilitation of Runway 9R-27L and the associated intersecting runways and connector taxiways from halfway to the adjacent runway or taxiway (north) and the runway safety area to the south.

Project Relevance: Rehabilitation of Runway, Busy GA airport, Major operational impact, RW to RW Intersection, 24/7 paving operation at RW to RW intersection, Asphalt Rehabilitation, Same Project Manager

Lessons Learned: Coordinated the repair of drainage structures into the project funding; Utilized pavement fabrics to reduce joint cracking at crown; Wrote specifications for pavement fabrics to include manufacturer representative to be present during application and provide letter of approval.

Cost: \$7,000,000 (Construction); \$487,656 (Fee)



CECIL AIRPORT (VQQ) - RUNWAY 18L-36R REHABILITATION DESIGN, BIDDING, AND CONSTRUCTION MANAGEMENT

JACKSONVILLE, FLORIDA | COMPLETED: 2011

Michael Baker performed the design to rehabilitate and overlay 12,500 feet of pavement on Runway 18L-36R. Michael Baker performed all design elements which included surface gradient correction, pavement design, pavement marking layout, joint sealing, spall repair and construction phasing. Also included in this project were infield drainage improvements consisting of removal of failing inlets and pipe, inlet improvements, and swale design.

Project Relevance: Rehabilitation of Runway, Busy GA airport, Major operational impact, RW to RW Intersection, Asphalt Rehabilitation, Same Project Manager

Lessons Learned: Coordinated the repair of drainage structures into the project funding; Utilized pavement fabrics to reduce joint cracking at crown; Wrote specifications for pavement fabrics to include manufacturer representative to be present during application and provide letter of approval.

Cost: \$472,483 (Fee)



APPROACH TO SCOPE OF WORK



APPROACH TO SCOPE OF WORK

Michael Baker's approach for design and construction is focused on expertise and speed. The last time this runway was rehabilitated, team members Tom Schilling, PE and John Neff, PE were both part of the delivery team. We are combining their specific past experience and molding it with new technologies and new team member expertise to provide the most dynamic delivery for this project.

When it comes to airfield pavement, there is no one closer to the research and latest solutions than team member Jeff Gagnon. Jeff led the FAA Pavement Research lab in New Jersey for the past 10 years. He is now with Michael Baker, where he is bringing his airfield pavement solutions to our clients to ensure they meet FAA requirements as well as get a pavement that will be reliable for years to come. Jeff will combine his knowledge with our pavement investigation subconsultant at ARA. ARA has been a partner to Jeff and the FAA in its research for airfield pavements. ARA was the author of the most recent FAA Advisory Circular for Pavement Design (AC 150/5320-6G) and Pavement Classification Rating (AC 150/5335-5D).

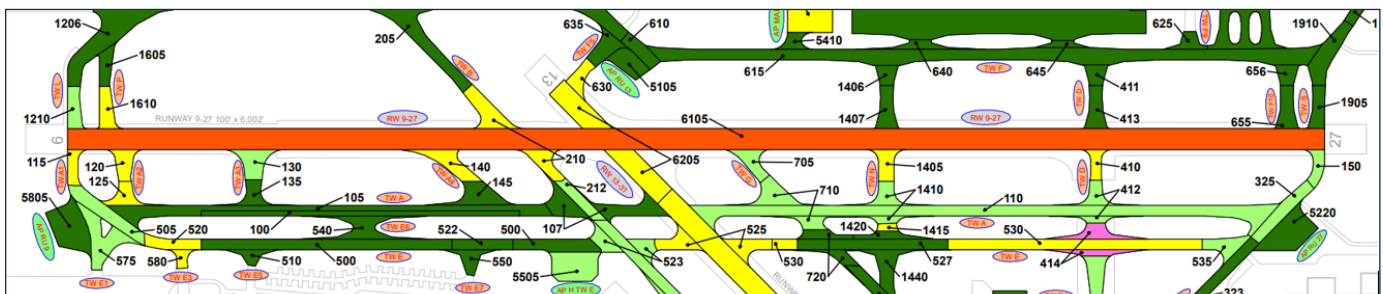
There are five primary steps in our approach for the life of the project (seen to the right). The expertise of these industry leading airfield pavement experts is key to the success of the first steps in our overall approach to the project.



DATA COLLECTION

Obtaining existing information about the pavement is an important stage of the overall pavement lifecycle used to develop the pavement design solution. Michael Baker staff's past experience on this runway gives us a great start on understanding what the needs and issues are. We have also reviewed the data from the 2022 FDOT PCI report which was recently published in January 2023. As shown in the image below, the RW PCI value is showing red which means it is in the poor condition category with a PCI score of 50. In 2019, RW 9-27 received a PCI score of 62. A 12 point drop in three years indicates rapid deterioration and immediate action is necessary.

In addition, this graphic shows several connector TWs (yellow) and the crossing RW 13-31 as below the minimum. It is common to include the rehabilitation of these additional areas while rehabilitating the RW. We will utilize Jeff Gagnon and airport planners to assist the airport staff in justification for including these areas, at a minimum, in the project limits for funding. TW's indicated in Light Green will be evaluated in the field to determine if justification for rehabilitation is warranted. In our opinion, justification is warranted to include these Taxiways since rehabilitation is identified in the FDOT PCI report as being rehabilitated in 2025. At a minimum, we will recommend rehabilitation to the RW hold positions.



2022 FDOT Airfield Pavement Evaluation Report

Providing a full perspective of the RW condition, strength, and deterioration patterns will be require supplemental data. Our team recommends additional data collection activities to supplement the existing information. The supplemental data collection would include but not be limited to the following: Mobile LiDAR (Topographic Survey), Heavy Weight Deflectometer (HWD), Ground Penetrating Radar (GPR), Laser Crack Measurement System (LCMS), and Geotechnical Investigation. Michael Baker has Mobile LiDAR capabilities using both vehicle-mounted and UAS-mounted equipment. A mobile data collection vehicle can collect the data for LiDAR, GPR, LCMS, and High Resolution photos. **Data collection is fast and easy. For this area it is expected to take less than one hour and can be scheduled during off-peak hours to minimize disruptions to airport operations.** We collect more data than needed so we can easily pivot and process additional data. Supplemental HWD data would also be collected and used in the analytics portion of determining the most economical pavement solution.



Michael Baker Data Collection Fleet

Our experience on this RW, allows us to know that a pavement fabric was placed between pavement layers as a crack reflection deterrent. The fabric was placed on the eastern portion of the RW. Identifying the pavement fabric on the plans will avoid potential contractor delays and claims during construction.

DATA ANALYTICS

All of the data collected will be utilized to provide a clear picture for the pavement solution. Mapping specific problem areas and understanding the strength and soil below the pavement will guide decisions on how best to rehabilitate the pavement for long term use.

Fleet mix is a key input for pavement design but forecasting accurately is a challenge. Fortunately, FAARFIELD 2.0 now includes new tools, which was developed by our Team Member ARA, to allow speedy analysis of both common and user defined aircraft types. **We recommend implementing a sensitivity analysis where aircraft types and volumes are varied to determine the appropriate fleet mix to provide the capacity and reliability FXE desires.**

The FAAPAVEAIR (PAVEAIR) software includes a Life Cycle Cost Analysis (LCCA) module also developed by ARA. We will use PAVEAIR to perform LCCA on the rehabilitation alternatives and compare initial and life cycle costs when developing recommendations. Michael Baker will meet with local contractors to determine accurate market costs for various materials so that the LCCA is reflective of current Fort Lauderdale market conditions.

Both structural and functional condition assessments of the pavement will be executed, and a series of alternatives will be developed. The structural evaluation will be based on FAA AC 150/5320-6G Airport Pavement Design and

Evaluation. GPR determined layer thickness, back-calculated layer modulus from HWD test data, and developed fleet mix options will be used as input to FAARFIELD 2.0. PCR will be determined in accordance with AC 150/5335-5D - Standardized Method of Reporting Airport Pavement Strength – PCR which ARA helped develop with the FAA. **A tip for determining the most efficient pavement sections and ensuring servicing the occasional larger aircraft, the analysis can include overloading. Overloading is an acceptable condition that can be analyzed for operational acceptance of larger aircraft.** The alternatives can either target a required PCR or the maximum PCR achievable for the allowable budget. PAVEAIR will be used for a LCCA of each alternative.

Since the existing asphalt surface is highly distressed the evaluation will focus more closely on salvaging the Limerock base. The HWD data will also be used to calculate the Base Damage Index (D3-D5 (mils)). We will also perform a closer analysis of the area previously identified as the controlling section for PCN to verify the results and refine the limits. Potential alternatives include mill and overlay or a thick overlay. The impact on surface grades will be evaluated and transitions to existing pavement will be part of the acceptability analysis.

The product of the alternative analysis will be a matrix of pavement alternatives, PCR, aircraft type associated with the PCR, Overload PCR, aircraft type associated with the overload PCR, initial cost, life cycle cost, constructability and construction duration.

DESIGN

Michael Baker's reputation for delivery of high quality projects that meet the needs of their clients is very important. This team is able to follow a traditional design approach, as shown below, or modify to meet schedule and client needs for delivery. We will work with FXE to develop an overall schedule from Project Initiation through Construction and our team will commit the resources necessary to meet the schedule. In the scheduling portion of this proposal, a detailed schedule and opportunities for faster delivery are identified.

PROJECT INITIATION	PRE-DESIGN	DESIGN / CONSTRUCTION DOCUMENTS (30/60/90/ FINAL DESIGN)	BIDDING	CONSTRUCTION
<ul style="list-style-type: none"> • Team Organization Chart • Scope, Fee, Contract • Baseline Design Schedule • Meeting Agendas & Minutes 	<ul style="list-style-type: none"> • Topographic Survey • High-Resolution Imaging - Online Platform • Updated Airport Base Map (AutoCAD) • Subsurface Utility Drawings • Geotechnical Report • Site Visit Reports w/ Photos • Meeting Agendas & Minutes 	<ul style="list-style-type: none"> • Construction Plans • Technical Specifications • Front End Specifications • Design Reports • Cost Estimates • CSPP and 7460 Receipt • Design and Quantity Calculations • Meeting Agendas & Minutes 	<ul style="list-style-type: none"> • Final Bid Documents • Prebid Meeting Agenda and Minutes • Addenda Narratives • Revised Bidding Documents • Bid Tabulation and Recommendation Letter • Grant Application 	<ul style="list-style-type: none"> • Conformed Construction Documents • Preconstruction Meeting Agenda and Minutes • Technical Submittal and RFI Responses • Site Visit Reports w/ Photos • Signed Contractor Pay Applications • Change Order Tabulations • Construction Document Revisions • Updated Airport Base Map (AutoCAD) • LiDAR As-Built Survey • Quality Assurance Testing • High-Resolution Imaging - Online Platform • Record Drawings • Meeting Notes

STAKEHOLDER COORDINATION

Robust involvement of your tenants and other stakeholders is an important step. Construction on this runway is going to be disruptive so we want to ensure we hear from everyone. Their voice in determining the construction phasing is important. The last time the runway was rehabilitated the stakeholders selected to close the runway and complete it as fast as possible. While we recommend this approach again, we need to provide options to the tenants and understand their concerns before making any final decisions.

This involvement will be managed by Sheryl Dickey, with subconsultant Dickey Consulting Services, Inc. Sheryl will take a hands-on approach to provide clear and concise information to the stakeholders. Stakeholder meetings may include open house sessions as well as one-on-one with specific tenants. The main goal is to solicit feedback and over communicate.

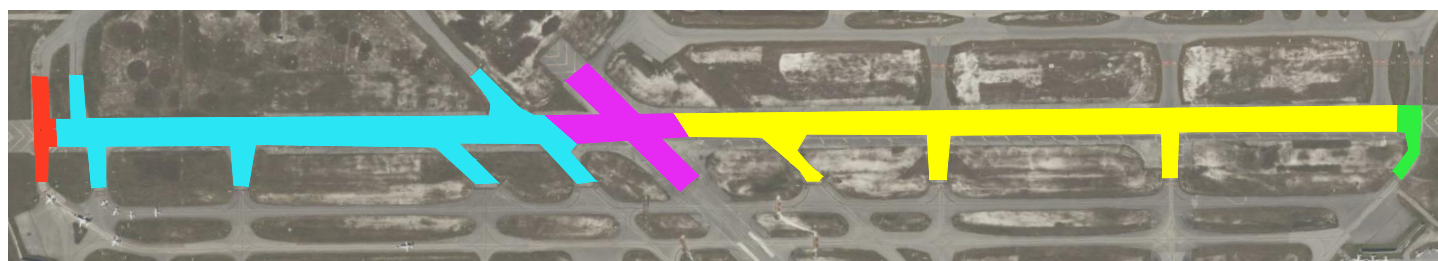
CONSTRUCTION

Understanding the impacts construction will have on the airport's operation is a component of the pavement rehabilitation solution. Ensuring constructability and consistency of the solution will speed up the construction process and ultimately the out of service time. The balance of operational impact and design solution go hand in hand. To keep a view on this, we will incorporate Bill Maughan into the design team to evaluate the solutions provided. Bill's input on specifications and contractor requirements will also help drive performance during construction. Incorporating Bill in the design phase will allow him to go into to construction phase with the "why" certain design items were implemented. If the construction oversight team understands the "why", then the construction will be completed faster.

Our recommendation is to complete the construction during a short (two week) RW closure, working 24 hours a day, seven days a week. The TW rehabilitations will be completed during this period also. At the RW to RW intersection, a full airport closure will be implemented. This can be done in small windows of time, over multiple days or during a 48 hour full closure. This level of construction production will require the contractor to have four-five paving crews and equipment for two-three simultaneous paving operations. Construction oversight will require three-four inspectors and two construction testing teams. This level of construction is an operation that Michael Baker has successfully managed in the past at other airports, including Atlanta-Hartfield International Airport (ATL), where a full RW was completely removed and reconstructed in 28 days. Quintin Watkins, PE, with Michael Baker, managed the ATL RW Reconstruction project and the construction operations. In fact, Quintin, has managed four RW reconstructions for ATL, all during a 24 hour – seven days a week construction operation. He will be brought in to provide expertise in this high production environment.

There are several options available to the Airport in terms of phasing and scheduling the work. It is MBI's understanding the city wishes to rehabilitate back to the hold short bars for connectors. However, a number of these connectors were rehabilitated within the past few years and likely can be left as is. These taxiways are also identified in the FDOT PCI report as having "Good" pavement ratings and are not on the planned rehabilitation list. Any phasing plan will require crossing points to allow aircraft movement between the north side to the south side of the runway during construction. The exact MOT would be finalized in coordination with Operations and the FAA Tower. Selected crossing points should minimize impacts to construction while allowing options for aircraft movement. Regular updates for travel paths will be provided during daily update meetings.

Below is a phasing sequence for consideration and discussion during the design phase of the project. This is not meant to be the final solution, but more a starting point for discussion.



KEY: Phase 1 Phase 2 Phase 3 Phase 4 Phase 5

Phasing Sequence

Phases 1 and 2 would install crossing points at the ends of the runway using around the standard mill and overlay to restore to permanent condition. With these crossings established, Phase 3 would shut down the runway except for the intersection with Runway 13-31 and complete the rehabilitations working 24/7. Mill the western end first then move to milling the eastern end (Phase 4), pave the western end. Once the east side is milled, paving operations will move to the east portion. Complete paving and cut grooves in the new pavement and apply temporary striping. Phase 5 is the work within the runway intersection. Connectors are rehabilitated when the east and west ends (Phases 3 and 4) are closed.

This phasing plan provides the highest quality of asphalt pavement construction by reducing the number pavement joints. While we recommend a 24/7 construction operation, this phasing plan could also be used during limited closure times or for nightly closures only. Ultimately, we will meet with you and the stakeholders to refine the phasing plan to ensure we meet the needs of the airport.

QUALITY MANAGEMENT

Nathan Parish, PE will oversee our QA/QC processes for this project. He has led and managed all types of airfield rehabilitation projects and his knowledge and experience will be an important asset to the Team. Our Aviation team implemented an updated QA/QC procedure in 2019 to provide additional clarity to our process and reviews. The primary differentiator in our process is that we provide our clients with our QA/QC documentation. The client gets to see the level of detail and execution of review that was completed. It's a re-assurance that you are receiving quality. The documentation is accompanied by a client and project specific QA/QC Assurance Checklist, that identifies all of the reviews date of reviews and other specifics to the submittal being made. This plan is currently in action, included in our Project Management Plans, and has proven to be effective. As with any great QA/QC process, it requires experienced professionals to conduct peer reviews. We will have Peer Reviews performed by our experienced aviation staff.

Michael Baker INTERNATIONAL				
QUALITY CONTROL/QUALITY ASSURANCE CHECKLIST				
AIRPORT: <input type="checkbox"/> JACKSONVILLE INTL. <input type="checkbox"/> CECIL <input type="checkbox"/> JANEX <input type="checkbox"/> HERLONG				
SUBMITTAL: <input type="checkbox"/> 15% <input type="checkbox"/> 30% <input type="checkbox"/> 60% <input type="checkbox"/> 90% <input type="checkbox"/> 100% <input type="checkbox"/> OTHER				
PROJECT TITLE: Cecil NW Development - Hangar 1005				
MICHAEL BAKER PROJECT NO: 175796		JAA CONTRACT NO: C-825		JAA PROJECT NO: 12018-01
PM APPROVAL for QC:		DATE: 10/25/20		
PRACTICE	DOR	DATE	REVIEWED BY	DATE
CIVIL	<i>[Signature]</i>	10/25/20	Mark Kistler	10/27/2020
ARCHITECTURAL	<i>[Signature]</i>	10/29/2020	Tiffany Castricone	10/22/2020
FIRE PROTECTION	Daniel Walder	10/29/2020	Kevin B. Spangler	10/26/2020
MECHANICAL	Rene J. Blanco	10/29/2020	Zemp Pepper	10/26/2020
ELECTRICAL	Frankie Baker	10/29/2020	Richard Crenshaw	10/26/2020
STRUCTURAL	Abdelateo Eljoudi	10/29/20	Nicole L. Bennett	10/28/2020
LANDSCAPE	Margaret Gaffney-Cole, P.L.H.	10/26/20	Margaret Gaffney-Cole, P.L.H.	10/28/20
PM BACK-CHECKED:		DATE: 10/29/2020		
QA/QC MANAGER:		DATE: 10/29/2020		

QA/QC Assurance Checklist

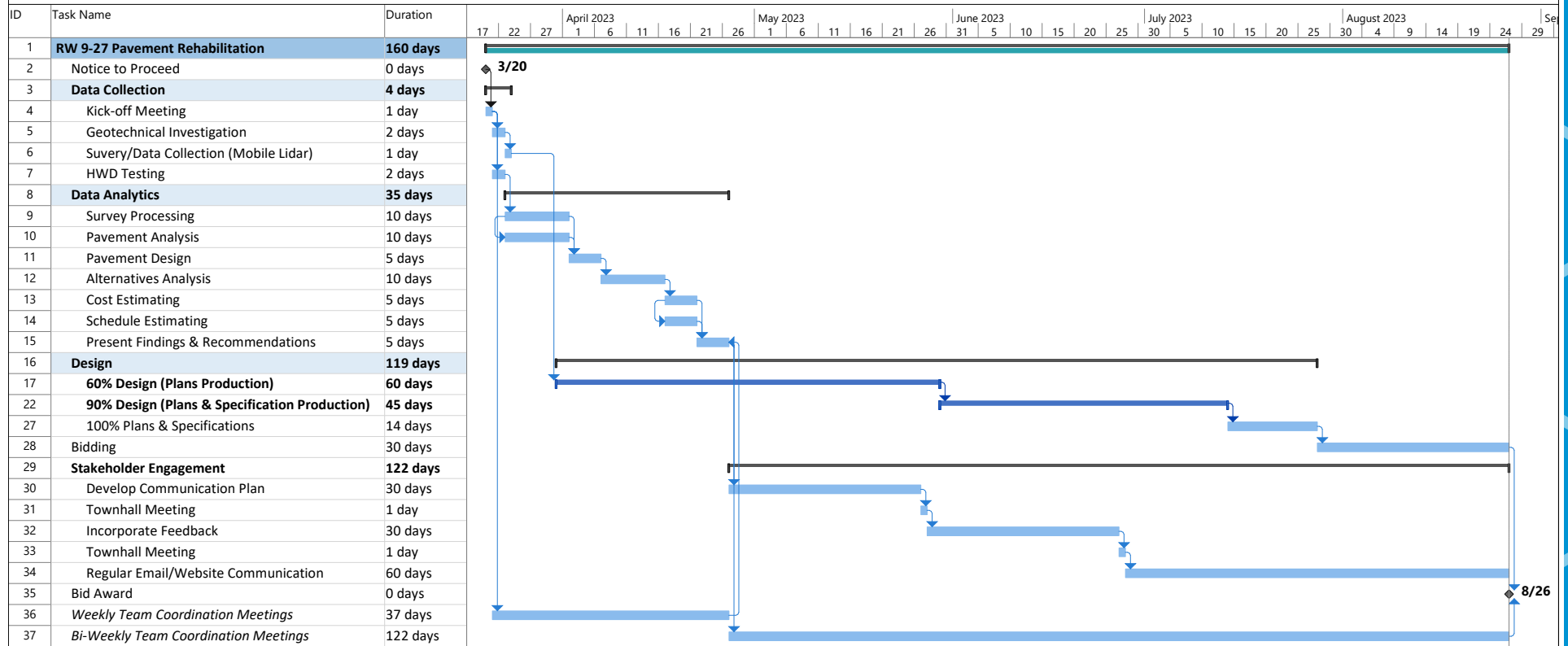
SCHEDULE

When time is of the essence, Michael Baker has provided delivery alternatives to clients to accommodate. These alternatives involve a much more hands on production team environment which includes the client representative. It is a very open and communicative process so we are able to answer questions quickly, get feedback in the process, resolve concerns quickly, and track discussions. It all comes down to communication.

Time Saving Opportunity	Description
Mobile Lidar Survey Collection	<ul style="list-style-type: none"> Full topographic survey can be completed in a few hours. Completed without RW closure. Collects high resolution imagery so no additional field time is needed for pavement review.
Overlapping Activities	<ul style="list-style-type: none"> Begin Plan Production while pavement design/analysis is being completed. Initiate construction phasing coordination with stakeholders in early stage. Establish fleet mix and supplement as data is collected.
Dynamic Plan Production and Review Process	<ul style="list-style-type: none"> Establish bi-weekly plan reviews with client. Reduce the number of official submittals from 4 to 2. Establish 2 distinct design teams. Team 1 focuses on RW and Team 2 will focus on TW and RW Connections.

City of Fort Lauderdale

Consultant Services for Fort Lauderdale Executive Airport Runway 9-27 Pavement Rehabilitation



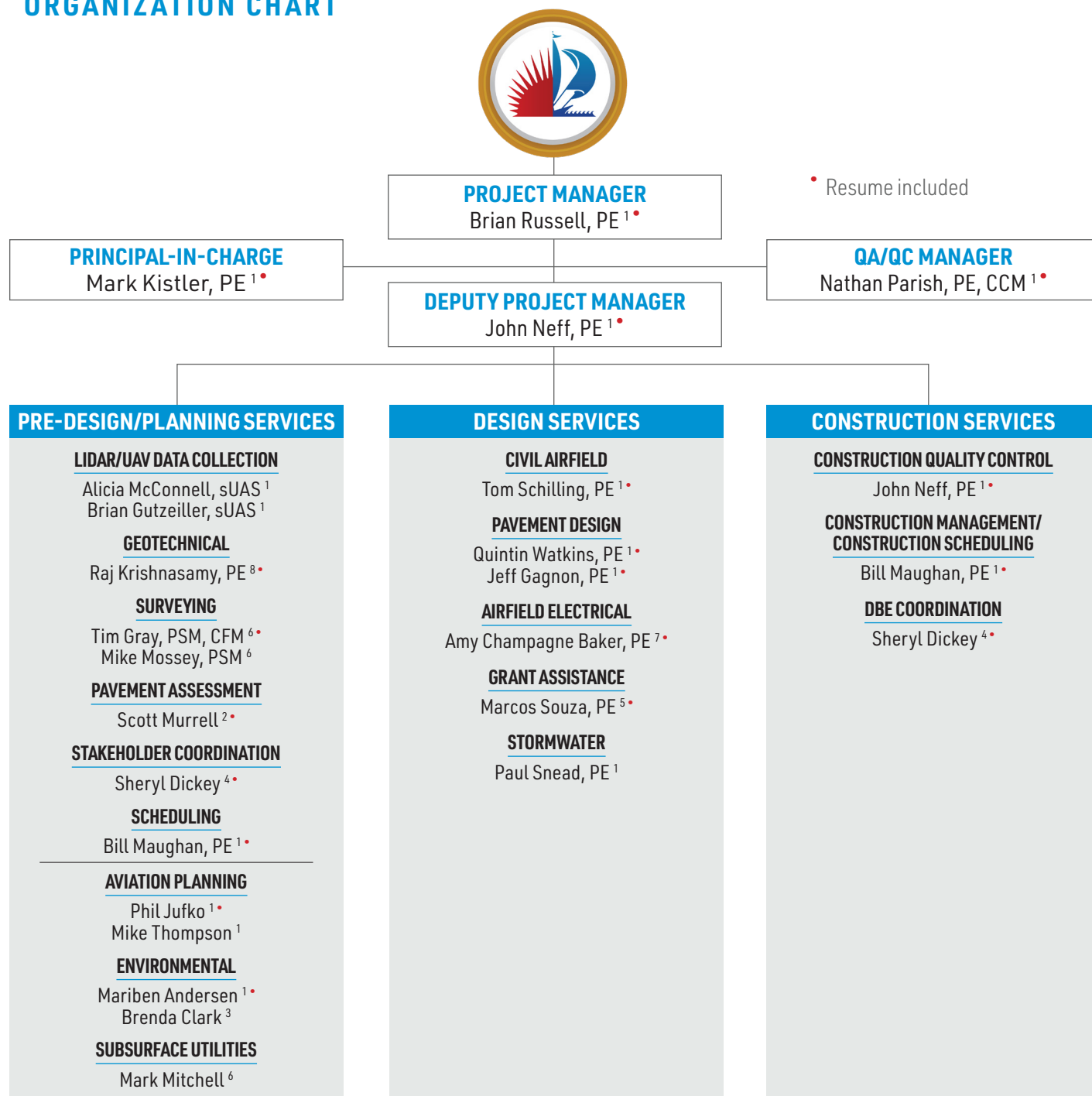


QUALIFICATION AND EXPERIENCE FOR THE PROJECT TEAM



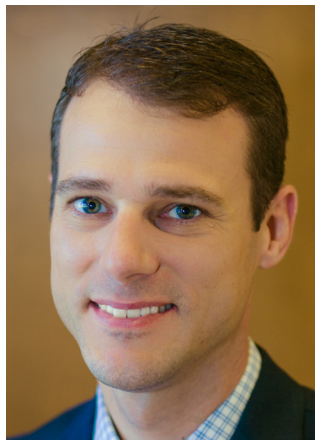
QUALIFICATION AND EXPERIENCE FOR THE PROJECT TEAM

ORGANIZATION CHART



PROJECT TEAM

1. Michael Baker International, Inc. | 2. ARA | 3. BSC Engineering, Inc. | 4. Dickey Consulting Services, Inc. | 5. EXP, Inc. | 6. KEITH | 7. Quantum Electrical Engineering, Inc. | 8. Tierra South Florida, Inc.



Michael Baker
INTERNATIONAL

EDUCATION

B.S., Civil Engineering,
Florida State University,
2004

LICENSES/ CERTIFICATIONS

Professional Engineer
- FL
FAA
Pavement Certificate
FDOT Airfield
Pavement Inspection

BRIAN RUSSELL, PE

PROJECT MANAGER

Mr. Russell has dedicated himself to serving the Aviation Engineering community throughout his entire professional career and will continue to provide excellent client service and solutions to his clients. He will serve as the Project Manager for this contract overseeing all aspects of the project. He will prepare scopes, assign resources, client coordination, and oversee the technical development of the project. Mr. Russell has over 20 years of experience in management, engineering, and client service in the aviation industry. As a seasoned Project Manager and Engineer on Runway Rehabilitation projects, he will leverage his knowledge of managing major aviation projects, to complete this project expeditiously.

RELEVANT EXPERIENCE

Daytona International Airport (DAB) – Runway 7L-25R Reconstruction, Daytona Beach, Florida. The project included the reconstruction of the 150x 10,900-ft asphalt runway, including the intersection of both commercial runways. The project utilized temporary displaced thresholds to maintain commercial operations. Services performed by Michael Baker include: design, bidding, and construction administration.

Palm Beach International Airport (PBI) - Runway 14-32 Rehabilitation, Palm Beach, Florida. The project involved the milling and asphalt resurfacing of the 150x 7,000-ft runway and included resurfacing within the intersection of the two commercial service runways. Services performed by Michael Baker include: design, bidding, and construction administration.

Cecil Airport (VQQ) – Runway 9R-27L Rehabilitation Design, Bidding, and Construction Management, Jacksonville, Florida. Michael Baker provided design, bidding, inspection, and construction administration and management services for the rehabilitation of Runway 9R-27L and the associated intersecting runways and connector taxiways from halfway to the adjacent runway or taxiway (north) and the runway safety area to the south.

Cecil Airport (VQQ) – Runway 18L-36R Rehabilitation Design, Bidding, and Construction Management, Jacksonville, Florida. Michael Baker performed the design to rehabilitate and overlay 12,500 feet of pavement on Runway 18L-36R. Michael Baker performed all design elements which included surface gradient correction, pavement design, pavement marking layout, joint sealing, spall repair and construction phasing. Also included in this project were infield drainage improvements consisting of removal of failing inlets and pipe, inlet improvements, and swale design.



MARK KISTLER, PE

PROJECT PRINCIPAL

Mr. Kistler has experience in the transportation engineering industry with emphasis on aviation projects. His areas of expertise are in geometric design, grading, drainage, erosion control, pavement design, cost estimating, stormwater permitting, project management and construction administration. Mr. Kistler has managed projects at airports of various sizes from small General Aviation airports to Large Hubs, throughout the United States. He has been responsible for the preparation of plans, specifications, permit packages, bid documents, grant applications, engineer's reports, and construction closeout documents.

RELEVANT EXPERIENCE

Architectural, Engineering, and Planning Services, Space Coast Regional Airport (TIX), Arthur Dunn Airpark (X21), and, Merritt Island (COI) Airports, Florida. Quality Manager. Responsible for coordination with the client, quality assurance and oversight of the project team. Monitored project and manpower status and assisted in conflict resolutions of design and construction issues. Michael Baker provided architectural, engineering, and planning services for three central Florida general aviation airports. Michael Baker's services included facility design, development of disadvantaged business enterprise goals, an airport layout plan update, environmental services, aircraft parking apron design, bidding-phase services, and construction services for improvements to the airports.

Continuing General Consulting Services, Jacksonville International & Executive (JAX) (CRG), Herlong Recreational (HEG), and Cecil (VQQ) Airports, Florida. Responsible for coordination with the client, quality assurance and oversight of the project team. Michael Baker has provided general consulting services for multiple projects at the aviation authority's four airports, including Jacksonville International Airport (JAX), Jacksonville Executive at Craig Airport (CRG), Herlong Recreational Airport (HEG), and Cecil Airport (VQQ). Michael Baker's services have included planning, environmental, engineering and architectural services, and owner representation.

General Consulting Services, Brooksville-Tampa Bay Regional Airport (BKV), Brooksville, Florida. Principal-In-Charge. Michael Baker has been providing full general consulting services to the airport since 2001. Michael Baker's services have included aviation planning, the preparation of master plan and airport layout plan updates, design of new facilities and rehabilitation of runways and taxiways, grant administration support, permitting and environmental compliance services, construction services, and agency coordination.

North Airfield Improvements, Cleveland Hopkins International Airport (CLE), Cleveland, Ohio. Quality Manager. Responsible for coordination with the client and oversight of the project teams for each task performed under this contract. Michael Baker is providing full, in-house consulting and engineering services for the in-place reconstruction of north airfield taxiways at CLE between Runway 6L-24R, Taxiway Sierra, Taxiway Kilo, and the commercial apron along Taxiway Juliet. The project also includes the reconstruction and expansion of the taxiway and apron pavement to meet the current ADG and TDG for the airport.

Michael Baker

INTERNATIONAL

EDUCATION

M.S.C.E., Civil Engineering/
Transportation Engineering, Clemson University, 1992

B.S.C.E., Civil Engineering, Clemson University, 1991

LICENSES/ CERTIFICATIONS

Professional Engineer
- FL



JOHN NEFF, PE

DEPUTY PROJECT MANAGER

Mr. Neff is experienced in design, project management, and contract administration in a wide range of projects from power generation to land development. During this time, he has developed the abilities required to oversee complex projects (specializing in airports) from conception through final commissioning. Most of his experience is within the state of Florida, primarily South Florida, with an emphasis on diversification. His experience includes coastal construction, drainage, transportation, aviation, land development, building design, power generation, site lighting, pump stations, water and sewer services, parks and recreation, landscaping, permits, community involvement, as well as peer reviews.

He has exceptional diplomatic skills in dealing with adverse conditions requiring attention to detail and is proficient in electrical, mechanical, structural, civil, geotechnical, and architecture disciplines. Mr. Neff has successfully managed over 500 GEC work authorizations with multiple subconsultants at aviation facilities worldwide including 12 years at FXE and 26 years at BCAD.

RELEVANT EXPERIENCE

FXE Engineering GEC Contract - Engineering & Inspections, Fort Lauderdale Executive Airport (FXE), Florida. RPR/EOR/PM for runway and taxiway rehabilitations since 1995 including Gopher studies, storm water and airfield improvements at both FXE and the Downtown Heliport. Improvements to the Administration and maintenance facilities, airfield signage and striping both design and construction. Multiple Burrowing owl and gopher relocations.

TICA General Consulting Services, Titusville, Florida. Titusville-Cocoa Airport Authority. Project Manager and EOR, responsible for working with the client in supporting the GEC program, Multiple airport improvements include runway and taxiway rehabilitations, Apron design, Environmental studies and commercial developments such as the Warbirds Museum and Space Perspective developments and transportation projects.

Runway 9-27 Rehabilitation, Space Coast Regional Airport (TIX), Titusville, Florida. Titusville-Cocoa Airport Authority. Project Manager. Responsible for overseeing the project. Michael Baker is providing design and engineering services for the Titusville-Cocoa Airport Authority's (TCAA) rehabilitation of crosswind Runway 9-27. The runway is 5,000 feet long and 100 feet wide and consists of bituminous concrete.

BCAD GEC for Engineering Services and CEI, Ft. Lauderdale, Florida. Taxiways RPR/ EOR/ PM for Large Hub and GA airports in Broward County Rehabilitation of 7 runways and 17 taxiways as well as design of aprons for T1 and T4. Redesigned all GTA's as well as major stormwater improvements. Responsible as the EOR for over \$100 million in constructions costs. Expert in developing MOT strategies. Over 25 utility specific projects and elimination of Hot Spots. Design and CEI for administration and maintenance facilities at HWO. Design and CEI for new taxiways and upgrades to signage and airfield lights.

Michael Baker INTERNATIONAL

EDUCATION

B.S.C.E., Civil
Engineering, Florida
Atlantic University, 2008

LICENSES/ CERTIFICATIONS

Professional Engineer -
FL, MA, NH
Qualified Stormwater
Management
Inspector - FL



PHIL JUFKO

AVIATION PLANNING

Mr. Jufko serves as the Director of Michael Baker's Aviation Planning Unit and is a seasoned aviation planner with experience in all aspects of aviation planning. During his career, he has gained valuable knowledge and experience in the fields of feasibility studies, aviation forecasts, noise impact studies, and master plans. Over his career, Mr. Jufko has supported clients in a variety of manners, and he specializes in public involvement campaigns for controversial projects.

RELEVANT EXPERIENCE

Multi-Year General Consulting Services, Palm Beach International Airport (PBI), West Palm Beach, Florida. Michael Baker provided planning, design, permitting, and construction management services under a multi-year general consulting contract.

Architectural, Engineering, and Planning Consultant Services, Tallahassee, Florida. Responsible for coordinating all aviation planning activities associated with Michael Baker's general consultant contract at Tallahassee International Airport. Routinely serves as an extension of airport staff.

Continuing General Consulting Services, Space Coast Regional Airport (TIX), Arthur Dunn Airpark (X21), and, Merritt Island (COI) Airports, Florida. Michael Baker provided full in-house consulting services to the airport authority for various projects.

Michael Baker

INTERNATIONAL

EDUCATION

B.S., Aviation Business Administration, Embry-Riddle Aeronautical University, 1990

LICENSES/ CERTIFICATIONS

N/A



MARIBEN ANDERSEN

ENVIRONMENTAL

As a scientist for several years, Ms. Andersen has extensive experience in NEPA documentation and environmental permitting associated with transportation development projects. This includes managing and conducting biological assessments, water quality and sediment studies, protected species and wildlife surveys, benthic invertebrate sampling, seagrass and underwater surveys, and wetland studies.

RELEVANT EXPERIENCE

Multi-Year General Consulting Services, Palm Beach International Airport (PBI), West Palm Beach, Florida. Michael Baker provided planning, design, permitting, and construction management services under a multi-year general consulting contract for projects at Palm Beach International Airport, North County General Aviation Airport, Palm Beach County Parks Airport, and Palm Beach County Glades Airport.

Wildlife Hazard Assessment and Management Plan Development, Palm Beach International Airport (PBI), Florida. Responsible for coordinating and managing the project including maintaining project schedule and budget, writing monthly project reports, coordination with the client and regulatory agencies, and served as QA/QC Officer for project deliverables.

Architectural, Engineering, and Planning Services, Space Coast Regional Airport (TIX), Arthur Dunn Airpark (X21), and, Merritt Island (COI) Airports, Florida. Michael Baker provided architectural, engineering, and planning services for three central Florida general aviation airports.

Michael Baker

INTERNATIONAL

EDUCATION

B.S., Biology-Ecology, University of the Philippines, 1982

LICENSES/ CERTIFICATIONS

CSX Roadway Worker Protection Certification

FAA Qualified Wildlife Hazard Biologist, 2006



TOM SCHILLING, PE

CIVIL AIRFIELD

Mr. Schilling has several years of experience in airfield design and construction administration. Mr. Schilling has served as project manager, project engineer, or construction manager for airfield projects at St. Petersburg-Clearwater International Airport, Key West International Airport, Palm Beach County Park Airport, Palm Beach International Airport, Orlando Sanford International Airport, Cecil Field, Sarasota Bradenton International Airport, and Fort Lauderdale Executive Airport.

RELEVANT EXPERIENCE

Runway 5-23 Reconstruction, Ocean Reef Club Airport (07FA), Key Largo, Florida.

Michael Baker is providing project management, airfield engineering and design, fuel farm improvements, landscape architecture, construction administration and construction inspection services for the reconstruction and raising of 4,500-foot-long Runway 5-23 at Ocean Reef Club Airport, a private airport in the upper Florida Keys.

Continuing General Consulting Services, Jacksonville International & Executive (JAX) (CRG), Herlong Recreational (HEG), and Cecil (VQQ) Airports, Florida.

Michael Baker has provided general consulting services for multiple projects at the aviation authority's four airports.

Runway 9-27 Rehabilitation and Widening of Taxiway Connectors, Space Coast Regional Airport, Titusville, Florida .

Provided design and construction inspection services. Michael Baker is providing design and engineering services for the Titusville-Cocoa Airport Authority's (TCAA) rehabilitation of crosswind Runway 9-27.

Michael Baker INTERNATIONAL

EDUCATION

B.S., Civil Engineering,
University of Florida,
Gainesville, 1999

LICENSES/ CERTIFICATIONS

Professional Engineer
- FL



QUINTIN WATKINS, PE

PAVEMENT DESIGN

Mr. Watkins is a nationally-recognized expert in successfully completing complex airfield improvement projects at some of the nations' busiest airports. He will be involved on a daily basis for all aspects of the airside engineering services task orders. Located in Michael Baker's Atlanta, Georgia office, he has been responsible for serving aviation clients for most of his career.

RELEVANT EXPERIENCE

Pavement Evaluation Program, Hartsfield-Jackson, Atlanta International Airport (ATL), Atlanta, Georgia.

Responsible for the airfield pavement management update. Michael Baker completed two evaluations at Hartsfield-Jackson Atlanta International Airport in the last five years.

Airport Layout Plan Update, Fulton County Airport (FTY), Fulton County, Georgia.

Identified location around the airfield for future development. Michael Baker prepared a red-line update of proposed changes to the airport layout plan (ALP).

Terminal Embankment and Utilities Relocation Design, Hartsfield-Jackson, Atlanta International Airport (ATL), Atlanta, Georgia.

Responsible for review construction administration duties which included responding to RFI's and final inspections. Michael Baker, as part of a joint venture, provided design services for embankment and utility design for the new Maynard H. Jackson International Terminal.

Michael Baker INTERNATIONAL

EDUCATION

M.S.C.E., Civil
Engineering, University
of Arkansas at
Fayetteville, 1995

LICENSES/ CERTIFICATIONS

Professional Engineer -
GA, MI, NC



Michael Baker INTERNATIONAL

EDUCATION

M.E., Civil Engineering,
Texas A&M University,
1993

LICENSES/ CERTIFICATIONS

Professional Engineer
- NC

JEFF GAGNON, PE

PAVEMENT DESIGN

Mr. Gagnon has diversified experience in the research, analysis, construction, design, and rehabilitation of pavements, both asphalt and concrete. His 30-year aviation career most recently includes 15 years with the FAA at the William J. Hughes Technical Center, where he led state of the art research & development and pavement and materials testing at the National Airport Pavement Test Facility and Pavement & Materials Research Center. .

RELEVANT EXPERIENCE

Federal Aviation Administration, Atlantic City, New Jersey. Manager of the Airport Pavement R&D Section within the FAA Airport Technology R&D Branch located at the William J. Hughes Technical Center.

2005 Development Program, Piedmont Triad International Airport, Greensboro, North Carolina. Responsible for the construction management of a \$250 million development program to support a Federal Express mid-Atlantic hub sort facility

Taxiway and Cargo Complex Planning and Design, Raleigh-Durham International Airport, North Carolina. Oversaw planning preliminary and final design of a 40-acre cargo complex and 6,750 feet of Group IV taxiways.

Runway, Taxiway, and Apron Rehabilitation and Design, Klamath Falls International Airport, Klamath Falls, Oregon. Involved in the rehabilitation and construction of runway, taxiways, and aprons at this joint-use facility.



Michael Baker INTERNATIONAL

EDUCATION

B.S., Civil Engineering,
Mississippi State
University, 2003

LICENSES/ CERTIFICATIONS

Professional Engineer
- FL

Certified Construction
Manager

NATHAN PARISH, PE, CCM

QA/QC MANAGER

Mr. Parish has client management, project management, engineering, and construction experience involving airfield, roadway, and civil- site design. His design experience includes management of design staff, schedule and budget control of design and construction services, preparation of project quality control and assurance plans, and the performance of quality control document reviews.

RELEVANT EXPERIENCE

Lake Estates Water Main CEI. Provided technical guidance, value engineering and constructability design suggestions and insight during design. The project included 12,000 linear feet of water main replacement in an urban neighborhood along with commercial and residential services.

Runway 5-23 Reconstruction, Ocean Reef Club Airport (07FA), Key Largo, Florida. Performed quality control and constructability reviews of construction plans and specifications.

Runway 9-27 Rehabilitation, Space Coast Regional Airport (TIX), Titusville, Florida. Responsible for managing Tampa airfield design staff in the preparation of plans, technical specifications, engineer's report, pavement design, and cost estimates.

General Consulting Services, Brooksville-Tampa Bay Regional Airport (BKV), Brooksville, Florida. Responsible for serving as a civil/engineer and T&M contact manager to evaluate parcel development options for the west commercial development site as a subtask to the GCS agreement. Michael Baker has been providing full general consulting services to the airport since 2001.



Michael Baker

INTERNATIONAL

EDUCATION

Bachelor of Science,
Civil Engineering
University of Florida,
1988

LICENSES/ CERTIFICATIONS

Professional Engineer
- FL

BILL MAUGHAN, PE

CONSTRUCTION MANAGEMENT/CONSTRUCTION SCHEDULING

Mr. Maughan's professional experience includes over 30 years in the Engineering and Construction Industry. Mr. Maughan acquired his Florida Professional Engineer license in 1993. Mr. Maughan performed a financial evaluation of the reimbursement to a client of Fort Lauderdale Executive Airport. He has designed and managed Construction of land development (subdivisions), Big Box (Walmart, Costco and Lowes's).

RELEVANT EXPERIENCE

Fort Lauderdale-Hollywood International Airport (FLL), Terminal 3 Modernization, Fort Lauderdale, Florida. Provided on site monitoring and engineering support to the Owner during construction. Coordinated all inspection activities, monitored activity scheduling and represented the Owner as the onsite project representative.

Port Everglades Terminal 18, Phase II, Fort Lauderdale, Florida. Managed the consultant design and the construction of a new cruise passenger terminal to provide concurrent passenger embarkation and debarkation in conjunction with improvements.

Runway 9L-27R Overlay, Fort Lauderdale, Florida. Managed all onsite inspection activities, provided document control and reviewed all RFIs, submittals, schedules and other deliverables for compliance with the contract.

Fort Lauderdale-Hollywood International Airport (FLL), Airfield Electrical Vault Rehab, Fort Lauderdale, Florida. Provided and install new 1200-amp service, 750KW generator with 3000-gallon tank with structural modifications to the vault. power during construction.



SCOTT MURRELL, PE

PAVEMENT ASSESSMENT

Mr. Murrell offers The City of Fort Lauderdale 40 years of experience in the civil engineering design and evaluation of airport infrastructure. Scott has led the design of over 50 runway and taxiway design projects. These projects include two +\$300 million runway reconstruction projects where he was the engineer of record for the civil engineering design. He has extensive experience evaluating both flexible and rigid airfield pavements based on material properties, NDT data, cores, borings, and visual inspection.

RELEVANT EXPERIENCE

JFK Runway 4L-22R Runway Reconstruction, Jamaica, New York. Design of the reconstruction of Runway 4R-22L including pavement evaluation, alternative analysis including LCCA, final design including pavement design, geometry, grading, pavement markings, drainage, phasing, specifications, and construction cost estimates.

JFK Taxiways A&B Rehabilitation, Jamaica, New York. Preliminary pavement design for the rehabilitation of the taxiways, performed the pavement evaluation, including non-destructive testing/analysis, pavement coring and PCI data review and developed rehabilitation design alternatives.

JFK Taxiway K-4 Expansions, Jamaica, New York. : The Project scope included final design of over 2500 ft. of taxiway. As a subcontractor to Michael Baker International (MBI), ARA developed the pavement design and supported QA review of MBI's overall design. The new taxiways include both rigid (2000 ft.) and flexible (500 ft.) pavements and scope included contractor submittal review.



EDUCATION

MS, Civil Engineering,
New Jersey Institute of
Technology, 1983

LICENSES/ CERTIFICATIONS

Professional Engineer
- FL



EDUCATION

MS in Geotechnical Engineering, University of Memphis 1995

LICENSES/ CERTIFICATIONS

Professional Engineer
- FL

Water Well Contractor

RAJ KRISHNASAMY, PE

GEOTECHNICAL

Mr. Krishnasamy, President and Principal Engineer of TSFGEO, is a Florida-Registered Geotechnical Engineer with more than 35 years of experience. He oversees the geotechnical engineering, construction materials testing, and inspection services operations. Mr. Krishnasamy's experience consists of successfully completing more than 5,000 public and private projects. He serves as Project Manager for continuing contracts with more than 20 Florida public agencies.

RELEVANT EXPERIENCE

Fort Lauderdale Executive Airport (FXE) Taxiway G Rehab, Broward County, Florida.

Mr. Krishnasamy was the Principal-in-Charge for the Geotechnical Engineering Services for the FXE Taxiway G Rehabilitation project. The rehabilitation started from Taxiway C to the west of Taxiway W. The purpose of this study was to provide geotechnical input to the design to assist in the evaluation of the merits of the construction.

Fort Lauderdale Executive Airport (FXE) Taxiway F Relocation/Rehabilitation, Broward County, Florida.

Mr. Krishnasamy was the Principal-in-Charge for the Geotechnical Engineering, QC and Inspection Services for the FXE Taxiway F Relocation/Rehabilitation.

Fort Lauderdale Executive Airport (FXE) Runway 31 Bypass Taxiways, Broward County, Florida.

Mr. Krishnasamy was the Principal-in-Charge for the Geotechnical Engineering Services for the FXE Runway 31 Bypass Taxiways. The project included a new taxiway section for Runway 31 and a bypass to the east end of Runway 31.



EDUCATION

B.S., Civil Engineering,
Florida Atlantic
University

LICENSES/ CERTIFICATIONS

Professional Engineer
- FL

MARCOS SOUZA, PE

GRANT ASSISTANCE

Mr. Souza is a Professional Engineer and Project Management Professional with nearly fifteen years of experience in executive Program/Project Management, construction, and engineering design on both large and small commercial projects. With a focus on port-of-entry projects, Mr. Souza has led multiple project teams at airports both large and small including Miami International Airport and Fort Lauderdale-Hollywood International Airport, serving more than sixty million passengers annually.

RELEVANT EXPERIENCE

Miami International Airport; H024C-1 Runway 8R-26L Pavement Rehabilitation, Miami, Florida.

Project included the rehabilitation of Runway 8R-26L, Taxiway M, and Taxiway N. The rehabilitation of Runway 8R-26L required milling one inch of existing asphalt pavements and overlaying with three inches of asphalt on keel section and connectors.

Ft. Lauderdale-Hollywood International Airport, Terminal 4 Federal Inspection Services Expansion, Ft. Lauderdale, Florida.

Project included the expansion of the Terminal 4 Federal Inspection Services Facility to increase passenger processing capacity from 800 to approximately 2,000 passengers per hour.

Ft. Lauderdale-Hollywood International Airport, Terminal 4 Apron Expansion Project, Ft. Lauderdale, Florida.

The project consisted of the reconfiguration and expansion of the existing Terminal Apron to support the ongoing Terminal 4 Gate Replacement program.



TIM GRAY, PSM, CFM

SURVEYING

Mr. Gray is a surveyor and mapper with two decades of years of experience surveying in South Florida. His experience includes a variety of surveying assignments, including right-of-way mapping, chain of title research and review, computations, topographic surveys, drainage surveys, ACSM/ALTA surveys, digital terrain models (DTM), condominium surveys, and calculated parcel/construction stake-outs.



EDUCATION

B.S. Geomatics,
University of Florida
1999

LICENSES/ CERTIFICATIONS

Professional Survey
and Mapper - FL
Certified
Floodplain Manager

RELEVANT EXPERIENCE

FXE-Parcel 16-C Hangar, Ft. Lauderdale, Florida. KEITH provided surveying and civil engineering design and permitting for landside and airside site improvements for the Sheltair Facility located on Parcel 16-C at the FXE.

FXE Miscellaneous Surveying Services, Ft. Lauderdale, Florida. KEITH has performed extensive surveying services at Fort Lauderdale Executive Airport (FXE). For resurfacing and rehabilitation of Taxiways Bravo, Charlie, Delta, Echo and Foxtrot.

FLL and HWO Miscellaneous Pavement Repairs, Ft. Lauderdale, Florida. KEITH serves as the Prime Consultant on this on-call contract providing civil engineering and auxiliary services for Utility and Paving projects throughout FLL and HWO.

FLL Exit Roadway and Valet Routing Improvements, Ft. Lauderdale, Florida. The KEITH Team was retained to provide design of the pedestrian crosswalk signalization at both arrival and departure levels. Services included civil engineering, surveying and mapping, subsurface utility engineering, traffic engineering, and landscape architecture.



SHERYL DICKEY

COMMUNITY INVOLVEMENT

Ms. Dickey, Founder & President/CEO of Dickey Consulting Services, Inc. is a community and economic development professional with more than 40 years' experience. Dickey and her staff bring a high level of energy and the ability to participate in a leadership or team member role to ensure successful completion of projects.

RELEVANT EXPERIENCE

Ft. Lauderdale Executive Airport Disadvantaged Business Enterprise (DBE) Program, Ft. Lauderdale, Florida. The City of Fort Lauderdale, as a provision of grants issued by the FAA, monitors the Fort Lauderdale Executive Airport DBE Program, particularly Contractor compliance with DBE requirements in construction contracts issued with funds from those grants.

Boca Raton Airport Authority Disadvantaged Business Enterprise (DBE) Program, Boca Raton, Florida. Boca Raton Airport Authority established a DBE Program for the Airport to achieve objectives of the Department of Transportation (DOT) 49 CFR Part 26. Key tenants of the Program are to create a level playing field for DBE firms to compete fairly for DOT-assisted contracts, ensure that only firms that fully meet 49 CFR Part 26 eligibility standards are permitted to participate as DBEs, and promote the use of DBEs in federally assisted contracts and procurement activities conducted by recipients.

Sewer Design and Implementation, Ft. Lauderdale, Florida. The City of Fort Lauderdale implemented the Program after accidental wastewater release incidents occurred throughout the city. The source of wastewater releases can be attributed to aging sewer mains.



EDUCATION

B.S.S.W. The Ohio State
University

LICENSES/ CERTIFICATIONS

N/A



AMY CHAMPAGNE BAKER, PE

AIRFIELD ELECTRICAL

Amy Champagne-Baker, Project Engineer, brings to this project over 25 years of electrical design and project management experience on major air carrier aviation airport runways, taxiways and apron edge lighting systems, instrumentation landing systems, airfield electrical vaults, and apron lighting. LEED-AP Certified.

RELEVANT EXPERIENCE

Ft. Lauderdale Executive Airport Runway Incursion Mitigation Holdbars, Ft. Lauderdale, Florida. This project included the design for nine new elevated and in-pavement runway guard light lighting systems for the existing "hot spot" taxiway connectors.

Ft. Lauderdale Executive Airport Runway Taxiway G Rehabilitation, Ft. Lauderdale, Florida. This project included the design of new taxiway lighting and signage system for Taxiway G and Taxiway M impacted by the geometry change.

Ft. Lauderdale Executive Airport Runway Taxiway H&Q Relocation, Ft. Lauderdale, Florida. This project included the design of new airfield lighting and signage systems for the relocation/modification to the existing taxiway geometry.

Ft. Lauderdale Executive Airport Signage Replacement, Ft. Lauderdale, Florida. This project included the design for the replacement of all existing airfield guidance signs with new LED airfield guidance signs.



EDUCATION

B.S., Electrical Engineering
Clarkson University, 1997

LICENSES/ CERTIFICATIONS

Electrical Engineer -
FL, CT, USVI



MINORITY/WOMEN (M/WBE) PARTICIPATION



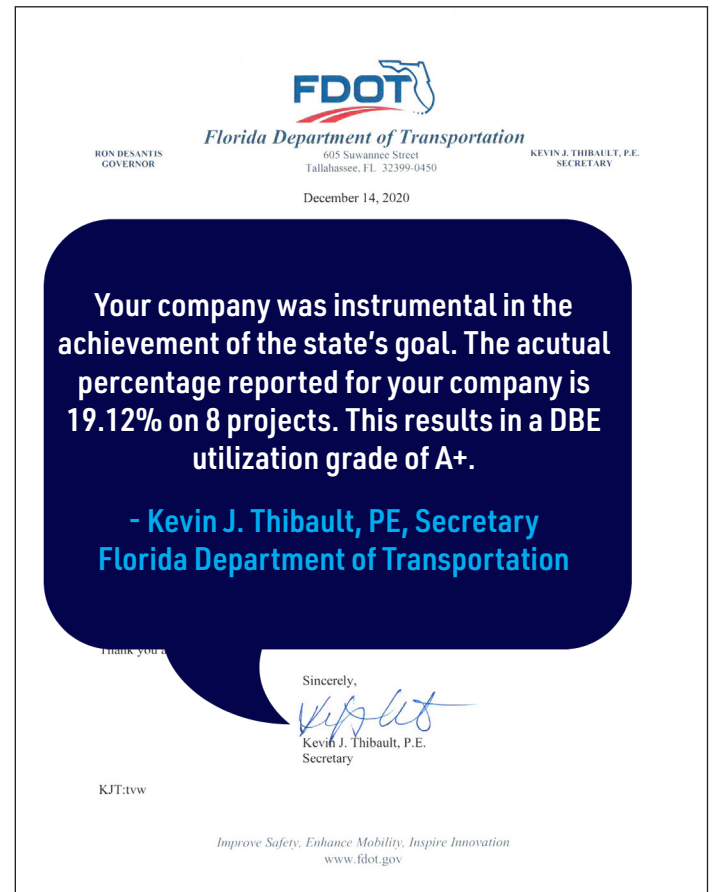
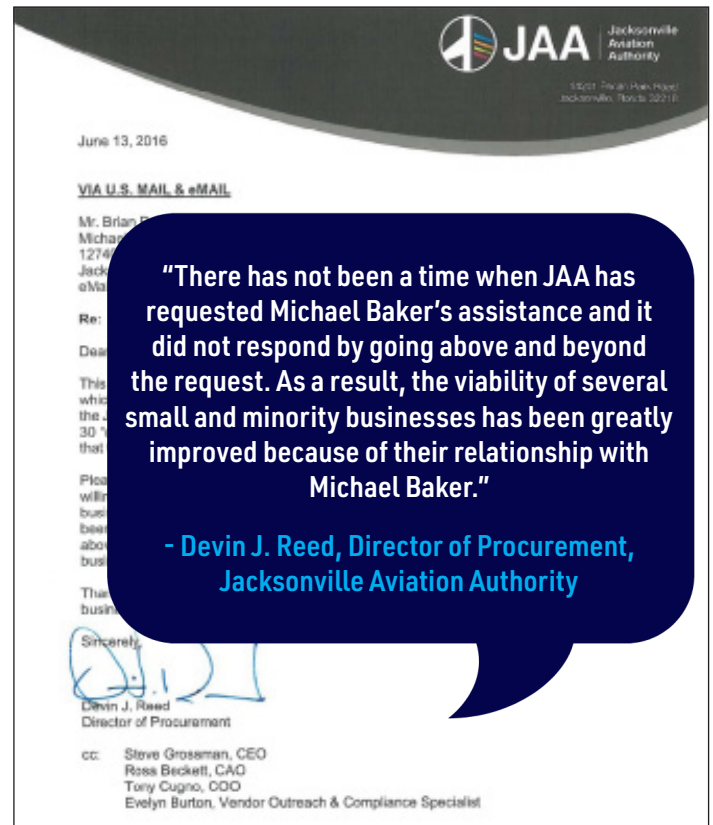
M/WBE PARTICIPATION

COMMITTED TO M/WBE PARTICIPATION IN MEANINGFUL ROLES

Michael Baker is committed to delivering the full depth and breadth of engineering and consulting services to our clients and embrace the collective differences, perspectives, backgrounds and cultures of our people and our teaming partners. It is our policy to grant equal opportunity in the procurement of all subcontracts. We align ourselves with the City's desire to provide M/WBE-certified firms the maximum opportunity to participate in the performance of contracts under this agreement. As firm believers in small and minority business programs, we take pride incorporating quality firms into our team. We have successfully augmented our teams with M/WBE firms that are local, provide quality technical skills, have related experience and a track record of completing similar projects. A testament to our M/WBE commitment, we were recognized by the Jacksonville Aviation Authority (JAA) for our continued support of JAA's Small and Minority Business Programs.

We achieve the M/WBE and W/MBE goals with a well-established process that includes:

- Continually monitoring M/WBE listings for new M/WBE partners
- Continually updating and strengthening our efforts to engage diverse business firms
- Mentoring M/WBE firms
- Helping to develop their staff and overall business to be stronger through meaningful roles on projects
- Developing long-lasting partnerships, helping our M/WBE partners expand market share and contribute to the local economy
- Providing seamless continuity achieved through effective communication and collaboration
- Delivering high quality services to our clients to enable us to provide additional opportunities to our M/WBE partners





SUBCONSULTANTS

Michael Baker routinely partners with specialty consultants that provide expertise in niche disciplines. We also have partners that help our clients meet federal, state and local DBE requirements. As a result, we have taken great care in selecting each member firm of our highly qualified team in response to your specific needs. Michael Baker has enjoyed a long, established, and successful relationship with key staff members of these well-disciplined firms. Michael Baker and members of our team have worked together to complete assignments similar to the services requested for this contract.



ARA, INC. | PAVEMENT

As one of the world's largest pavement engineering firms, ARA offers The City of Fort Lauderdale critical expertise through decades of demonstrated airfield pavement experience. ARA's expertise spans the full life cycle of airfield pavements (research & development, design, construction support/quality assurance, management, evaluation, and maintenance & rehabilitation).



BSC ENGINEERING, INC. | ENVIRONMENTAL

BSC has more than 30 years of experience in working on the planning, design, permitting, construction, and compliance monitoring of environmental projects. Led by Brenda Clark, the firm has experience in compliance monitoring, site assessments, and site remediation. Ms. Clark is an Advisory Board Member for the Hinkley Center for Solid and Hazardous Waste Management, which provides distribution of funding for solid waste research in the State of Florida.



DICKEY CONSULTING SERVICES, INC. | COMMUNITY INVOLVEMENT

Dickey Consulting Services, Inc. (DCS) is an economic development, government relations, project management, and communications consulting firm. DCS is headquartered in the Midtown Commerce Center, a Silver LEED certified building near downtown Fort Lauderdale.



EXP, INC. | BUILDING ENGINEERING | ARCHITECTURE

EXP is a full service architectural and engineering firm with over 3,500 professionals across North America, and offices throughout the US including ten offices and over 300 professionals in Florida. EXP will provide services on projects of varying scales and complexities, both airside and landside, and from design to program management and construction management.



KEITH & ASSOCIATES | SURVEY | SUE

The KEITH Team has completed and performed similar assignments for consulting service contracts which include numerous surveys for horizontal/vertical geodetic control surveys and coordination with existing utility locations.



QUANTUM ELECTRICAL ENGINEERING, INC. | ELECTRICAL

Quantum provides full-spectrum electrical design services along with construction services to our clients and specialize in the design of electrical systems for Airports including passenger terminals, airfield lighting, and FAA approach systems and have worked extensively throughout the state of Florida.



TIERRA SOUTH FLORIDA, INC. | GEOTECHNICAL

Tierra provides a complete range of geotechnical engineering services. The firm's geotechnical design solutions define and reduce construction and long-term performance risks.





CERTIFICATE OF LIABILITY INSURANCE

 DATE(MM/DD/YYYY)
08/16/2022

THIS CERTIFICATE IS ISSUED AS A MATTER OF INFORMATION ONLY AND CONFERS NO RIGHTS UPON THE CERTIFICATE HOLDER. THIS CERTIFICATE DOES NOT AFFIRMATIVELY OR NEGATIVELY AMEND, EXTEND OR ALTER THE COVERAGE AFFORDED BY THE POLICIES BELOW. THIS CERTIFICATE OF INSURANCE DOES NOT CONSTITUTE A CONTRACT BETWEEN THE ISSUING INSURER(S), AUTHORIZED REPRESENTATIVE OR PRODUCER, AND THE CERTIFICATE HOLDER.

IMPORTANT: If the certificate holder is an **ADDITIONAL INSURED**, the policy(ies) must have **ADDITIONAL INSURED** provisions or be endorsed. If **SUBROGATION IS WAIVED**, subject to the terms and conditions of the policy, certain policies may require an endorsement. A statement on this certificate does not confer rights to the certificate holder in lieu of such endorsement(s).

PRODUCER Aon Risk Services Central, Inc. Pittsburgh PA Office EQT Plaza ~ Suite 2700 625 Liberty Avenue Pittsburgh PA 15222-3110 USA	CONTACT NAME: PHONE (A/C. No. Ext): (866) 283-7122		FAX (A/C. No.): (800) 363-0105
	E-MAIL ADDRESS:		
INSURED Michael Baker International, Inc. 4211 West Boy Scout Blvd Suite 500 Tampa FL 33607 USA	INSURER(S) AFFORDING COVERAGE		NAIC #
	INSURER A: XL Insurance America Inc		24554
	INSURER B: American Guarantee & Liability Ins Co		26247
	INSURER C: Allied World Surplus Lines Insurance Co		24319
	INSURER D: Zurich American Ins Co		16535
	INSURER E:		
INSURER F:			

Holder Identifier :

COVERAGES

CERTIFICATE NUMBER: 570094919051

REVISION NUMBER:

THIS IS TO CERTIFY THAT THE POLICIES OF INSURANCE LISTED BELOW HAVE BEEN ISSUED TO THE INSURED NAMED ABOVE FOR THE POLICY PERIOD INDICATED. NOTWITHSTANDING ANY REQUIREMENT, TERM OR CONDITION OF ANY CONTRACT OR OTHER DOCUMENT WITH RESPECT TO WHICH THIS CERTIFICATE MAY BE ISSUED OR MAY PERTAIN, THE INSURANCE AFFORDED BY THE POLICIES DESCRIBED HEREIN IS SUBJECT TO ALL THE TERMS, EXCLUSIONS AND CONDITIONS OF SUCH POLICIES. LIMITS SHOWN MAY HAVE BEEN REDUCED BY PAID CLAIMS.

Limits shown are as requested

INSR LTR	TYPE OF INSURANCE	ADDL INSD	SUBR WVD	POLICY NUMBER	POLICY EFF (MM/DD/YYYY)	POLICY EXP (MM/DD/YYYY)	LIMITS
D	<input checked="" type="checkbox"/> COMMERCIAL GENERAL LIABILITY <input type="checkbox"/> CLAIMS-MADE <input checked="" type="checkbox"/> OCCUR GEN'L AGGREGATE LIMIT APPLIES PER: <input type="checkbox"/> POLICY <input checked="" type="checkbox"/> PROJECT <input checked="" type="checkbox"/> LOC OTHER:			GLO419728101	08/30/2022	08/30/2023	EACH OCCURRENCE \$2,000,000 DAMAGE TO RENTED PREMISES (Ea occurrence) \$1,000,000 MED EXP (Any one person) \$10,000 PERSONAL & ADV INJURY \$2,000,000 GENERAL AGGREGATE \$4,000,000 PRODUCTS - COMP/OP AGG \$4,000,000 SIR/Deductible \$250,000
D	<input checked="" type="checkbox"/> AUTOMOBILE LIABILITY <input checked="" type="checkbox"/> ANY AUTO <input type="checkbox"/> OWNED AUTOS ONLY <input checked="" type="checkbox"/> HIRED AUTOS ONLY <input type="checkbox"/> SCHEDULED AUTOS <input checked="" type="checkbox"/> NON-OWNED AUTOS ONLY			BAP4197284-01	08/30/2022	08/30/2023	COMBINED SINGLE LIMIT (Ea accident) \$2,000,000 BODILY INJURY (Per person) BODILY INJURY (Per accident) PROPERTY DAMAGE (Per accident) Deductible \$100,000
B	<input checked="" type="checkbox"/> UMBRELLA LIAB <input checked="" type="checkbox"/> OCCUR <input type="checkbox"/> EXCESS LIAB <input type="checkbox"/> CLAIMS-MADE DED <input checked="" type="checkbox"/> RETENTION \$10,000			AUC053258204	08/30/2022	08/30/2023	EACH OCCURRENCE \$10,000,000 AGGREGATE \$10,000,000
D	<input checked="" type="checkbox"/> WORKERS COMPENSATION AND EMPLOYERS' LIABILITY ANY PROPRIETOR / PARTNER / EXECUTIVE OFFICER/MEMBER EXCLUDED? (Mandatory in NH) If yes, describe under DESCRIPTION OF OPERATIONS below	Y/N	N/A	WC419728201 AOS WC419728501 WI	08/30/2022	08/30/2023	<input checked="" type="checkbox"/> PER STATUTE <input type="checkbox"/> OTHER E.L. EACH ACCIDENT \$1,000,000 E.L. DISEASE-EA EMPLOYEE \$1,000,000 E.L. DISEASE-POLICY LIMIT \$1,000,000
C	E&O-PL-Primary			03124806 Claims Made SIR applies per policy terms & conditions	08/30/2022	08/30/2023	Per Claim \$5,000,000 Aggregate \$5,000,000 SIR/Deductible \$200,000

DESCRIPTION OF OPERATIONS / LOCATIONS / VEHICLES (ACORD 101, Additional Remarks Schedule, may be attached if more space is required)

Evidence of Insurance.

Certificate No : 570094919051

CERTIFICATE HOLDER

CANCELLATION

Michael Baker International, Inc. 4211 West Boy Scout Boulevard, Suite 500 Tampa FL 33607 USA	SHOULD ANY OF THE ABOVE DESCRIBED POLICIES BE CANCELLED BEFORE THE EXPIRATION DATE THEREOF, NOTICE WILL BE DELIVERED IN ACCORDANCE WITH THE POLICY PROVISIONS.
	AUTHORIZED REPRESENTATIVE

©1988-2015 ACORD CORPORATION. All rights reserved.

ACORD 25 (2016/03)

The ACORD name and logo are registered marks of ACORD



CERTIFICATE OF LIABILITY INSURANCE

12740-036
DATE (MM/DD/YYYY)
04/25/2022

THIS CERTIFICATE IS ISSUED AS A MATTER OF INFORMATION ONLY AND CONFERS NO RIGHTS UPON THE CERTIFICATE HOLDER. THIS CERTIFICATE DOES NOT AFFIRMATIVELY OR NEGATIVELY AMEND, EXTEND OR ALTER THE COVERAGE AFFORDED BY THE POLICIES BELOW. THIS CERTIFICATE OF INSURANCE DOES NOT CONSTITUTE A CONTRACT BETWEEN THE ISSUING INSURER(S), AUTHORIZED REPRESENTATIVE OR PRODUCER, AND THE CERTIFICATE HOLDER.

IMPORTANT: If the certificate holder is an ADDITIONAL INSURED, the policy(ies) must have ADDITIONAL INSURED provisions or be endorsed. If SUBROGATION IS WAIVED, subject to the terms and conditions of the policy, certain policies may require an endorsement. A statement on this certificate does not confer rights to the certificate holder in lieu of such endorsement(s).

PRODUCER Western Assurance Corp. 3701 Paseo Del Norte NE PO Box 94600 Albuquerque NM 87199-4600	CONTACT NAME: Alicia Montano PHONE (A/C, No. Ext): (505) 265-8481 FAX (A/C, No): (505) 266-3500 E-MAIL ADDRESS: amontano@westernassurance.com																					
INSURED Applied Research Associates Inc NeyaSystems 4300 San Mateo Blvd NE #B300 Albuquerque NM 87110	<table><tr><th colspan="2">INSURER(S) AFFORDING COVERAGE</th><th>NAIC #</th></tr><tr><td>INSURER A:</td><td>Transportation Insurance</td><td>20494</td></tr><tr><td>INSURER B:</td><td>Valley Forge</td><td>20508</td></tr><tr><td>INSURER C:</td><td>Continental Ins Co</td><td>35289</td></tr><tr><td>INSURER D:</td><td>Continental Casualty Company</td><td>20443</td></tr><tr><td>INSURER E:</td><td></td><td></td></tr><tr><td>INSURER F:</td><td></td><td></td></tr></table>	INSURER(S) AFFORDING COVERAGE		NAIC #	INSURER A:	Transportation Insurance	20494	INSURER B:	Valley Forge	20508	INSURER C:	Continental Ins Co	35289	INSURER D:	Continental Casualty Company	20443	INSURER E:			INSURER F:		
INSURER(S) AFFORDING COVERAGE		NAIC #																				
INSURER A:	Transportation Insurance	20494																				
INSURER B:	Valley Forge	20508																				
INSURER C:	Continental Ins Co	35289																				
INSURER D:	Continental Casualty Company	20443																				
INSURER E:																						
INSURER F:																						

COVERAGES

CERTIFICATE NUMBER: 22/23 Master

REVISION NUMBER:

THIS IS TO CERTIFY THAT THE POLICIES OF INSURANCE LISTED BELOW HAVE BEEN ISSUED TO THE INSURED NAMED ABOVE FOR THE POLICY PERIOD INDICATED. NOTWITHSTANDING ANY REQUIREMENT, TERM OR CONDITION OF ANY CONTRACT OR OTHER DOCUMENT WITH RESPECT TO WHICH THIS CERTIFICATE MAY BE ISSUED OR MAY PERTAIN, THE INSURANCE AFFORDED BY THE POLICIES DESCRIBED HEREIN IS SUBJECT TO ALL THE TERMS, EXCLUSIONS AND CONDITIONS OF SUCH POLICIES. LIMITS SHOWN MAY HAVE BEEN REDUCED BY PAID CLAIMS.

INSR LTR	TYPE OF INSURANCE	ADDL INSD	SUBR WVD	POLICY NUMBER	POLICY EFF (MM/DD/YYYY)	POLICY EXP (MM/DD/YYYY)	LIMITS
A	<input checked="" type="checkbox"/> COMMERCIAL GENERAL LIABILITY <input type="checkbox"/> CLAIMS-MADE <input checked="" type="checkbox"/> OCCUR <input checked="" type="checkbox"/> XCU Included <input checked="" type="checkbox"/> Pollution Included GEN'L AGGREGATE LIMIT APPLIES PER: <input type="checkbox"/> POLICY <input checked="" type="checkbox"/> PRO-JECT <input type="checkbox"/> LOC OTHER:			4029254172	06/30/2021	06/30/2022	EACH OCCURRENCE \$ 1,000,000 DAMAGE TO RENTED PREMISES (Ea occurrence) \$ 100,000 MED EXP (Any one person) \$ 15,000 PERSONAL & ADV INJURY \$ 1,000,000 GENERAL AGGREGATE \$ 2,000,000 PRODUCTS - COMP/OP AGG \$ 2,000,000 Employee Benefits \$ 1,000,000
B	<input checked="" type="checkbox"/> AUTOMOBILE LIABILITY <input checked="" type="checkbox"/> ANY AUTO OWNED AUTOS ONLY HIRED AUTOS ONLY <input type="checkbox"/> SCHEDULED AUTOS NON-OWNED AUTOS ONLY			4026349108	03/01/2022	03/01/2023	COMBINED SINGLE LIMIT (Ea accident) \$ 1,000,000 BODILY INJURY (Per person) \$ BODILY INJURY (Per accident) \$ PROPERTY DAMAGE (Per accident) \$ Uninsured motorist \$ 1,000,000
C	<input checked="" type="checkbox"/> UMBRELLA LIAB EXCESS LIAB DED <input checked="" type="checkbox"/> RETENTION \$ 10,000			4024175866	06/30/2021	06/30/2022	COMBINED SINGLE LIMIT (Ea accident) \$ 10,000,000 EACH OCCURRENCE \$ 10,000,000 AGGREGATE \$ PER STATUTE <input type="checkbox"/> OTH-ER <input type="checkbox"/>
D	WORKERS COMPENSATION AND EMPLOYERS' LIABILITY ANY PROPRIETOR/PARTNER/EXECUTIVE OFFICER/MEMBER EXCLUDED? (Mandatory in NH) If yes, describe under DESCRIPTION OF OPERATIONS below	Y / N N	N / A	4026390760	01/31/2022	01/31/2023	E.L. EACH ACCIDENT \$ 1,000,000 E.L. DISEASE - EA EMPLOYEE \$ 1,000,000 E.L. DISEASE - POLICY LIMIT \$ 1,000,000
A	Professional Liability-Retro 10-23-95 Cyber Liability			4029254172	06/30/2021	06/30/2022	Each Claim \$5,000,000 Aggregate \$5,000,000

DESCRIPTION OF OPERATIONS / LOCATIONS / VEHICLES (ACORD 101, Additional Remarks Schedule, may be attached if more space is required)

CERTIFICATE HOLDER

CANCELLATION

SAMPLE
SAMPLE
SAMPLE

SHOULD ANY OF THE ABOVE DESCRIBED POLICIES BE CANCELLED BEFORE THE EXPIRATION DATE THEREOF, NOTICE WILL BE DELIVERED IN ACCORDANCE WITH THE POLICY PROVISIONS.

AUTHORIZED REPRESENTATIVE

© 1988-2015 ACORD CORPORATION. All rights reserved.



CERTIFICATE OF LIABILITY INSURANCE

City of Fort Lauderdale

DATE (MM/DD/YYYY) 08/19/22

08/19/22

THIS CERTIFICATE IS ISSUED AS A MATTER OF INFORMATION ONLY AND CONFERS NO RIGHTS UPON THE CERTIFICATE HOLDER. THIS CERTIFICATE DOES NOT AFFIRMATIVELY OR NEGATIVELY AMEND, EXTEND OR ALTER THE COVERAGE AFFORDED BY THE POLICIES BELOW. THIS CERTIFICATE OF INSURANCE DOES NOT CONSTITUTE A CONTRACT BETWEEN THE ISSUING INSURER(S), AUTHORIZED REPRESENTATIVE OR PRODUCER, AND THE CERTIFICATE HOLDER.

IMPORTANT: If the certificate holder is an **ADDITIONAL INSURED**, the policy(ies) must have **ADDITIONAL INSURED** provisions or be endorsed. If **SUBROGATION IS WAIVED**, subject to the terms and conditions of the policy, certain policies may require an endorsement. A statement on this certificate does not confer rights to the certificate holder in lieu of such endorsement(s).

PRODUCER FLORIDA DESIGN INSURANCE LLC 4707 W Gandy Blvd Ste 15 Tampa, FL 33611 License #:		CONTACT NAME: TKJ PHONE (A/C, No, Ext): (813)600-5379 FAX (A/C, No): E-MAIL ADDRESS: tjohnson@floridadesigninsurance.com	
INSURED BSC Engineering, Inc 10490 South Lago Vista Circle Parkland, FL 33076		INSURER(S) AFFORDING COVERAGE INSURER A: Hartford Underwriters Ins Co. NAIC # 30104 INSURER B: Pacific Insurance Company, Ltd 10046 INSURER C: INSURER D: INSURER E: INSURER F:	

COVERAGES **CERTIFICATE NUMBER:** **REVISION NUMBER:**

THIS IS TO CERTIFY THAT THE POLICIES OF INSURANCE LISTED BELOW HAVE BEEN ISSUED TO THE INSURED NAMED ABOVE FOR THE POLICY PERIOD INDICATED. NOTWITHSTANDING ANY REQUIREMENT, TERM OR CONDITION OF ANY CONTRACT OR OTHER DOCUMENT WITH RESPECT TO WHICH THIS CERTIFICATE MAY BE ISSUED OR MAY PERTAIN, THE INSURANCE AFFORDED BY THE POLICIES DESCRIBED HEREIN IS SUBJECT TO ALL THE TERMS, EXCLUSIONS AND CONDITIONS OF SUCH POLICIES. LIMITS SHOWN MAY HAVE BEEN REDUCED BY PAID CLAIMS.

INSR LTR	TYPE OF INSURANCE	ADDL INSD	SUBR WVD	POLICY NUMBER	POLICY EFF (MM/DD/YYYY)	POLICY EXP (MM/DD/YYYY)	LIMITS
A	<input checked="" type="checkbox"/> COMMERCIAL GENERAL LIABILITY			44 SBM AH4Z9G	09/01/22	09/01/23	EACH OCCURRENCE
	<input type="checkbox"/> CLAIMS-MADE <input checked="" type="checkbox"/> OCCUR						DAMAGE TO RENTED PREMISES (Ea occurrence)
							MED EXP (Any one person)
							PERSONAL & ADV INJURY
							GENERAL AGGREGATE
							PRODUCTS - COMP/OP AGG
A	AUTOMOBILE LIABILITY			44SBMAH4Z9G	09/01/22	09/01/23	COMBINED SINGLE LIMIT (Ea accident)
	<input type="checkbox"/> ANY AUTO						BODILY INJURY (Per person)
	<input type="checkbox"/> OWNED AUTOS ONLY						BODILY INJURY (Per accident)
	<input checked="" type="checkbox"/> HIRED AUTOS ONLY						PROPERTY DAMAGE (Per accident)
	<input checked="" type="checkbox"/> SCHEDULED AUTOS NON-OWNED AUTOS ONLY						
	UMBRELLA LIAB						EACH OCCURRENCE
	EXCESS LIAB						AGGREGATE
	DED RETENTION \$						
	WORKERS COMPENSATION AND EMPLOYERS' LIABILITY						PER STATUTE OTH-ER
	ANY PROPRIETOR/PARTNER/EXECUTIVE OFFICER/MEMBER EXCLUDED? (Mandatory in NH)						E.L. EACH ACCIDENT
	If yes, describe under DESCRIPTION OF OPERATIONS below						E.L. DISEASE - EA EMPLOYEE
							E.L. DISEASE - POLICY LIMIT
B	Professional Liability			01 OH 0466837-22	08/17/22	08/17/23	Each Claim Annual Aggr. \$1,000,000 \$1,000,000

DESCRIPTION OF OPERATIONS / LOCATIONS / VEHICLES (ACORD 101, Additional Remarks Schedule, may be attached if more space is required)

Professional Liability is written on a claims made and reported basis.

CERTIFICATE HOLDER For Proposal Purposes	CANCELLATION SHOULD ANY OF THE ABOVE DESCRIBED POLICIES BE CANCELLED BEFORE THE EXPIRATION DATE THEREOF, NOTICE WILL BE DELIVERED IN ACCORDANCE WITH THE POLICY PROVISIONS. AUTHORIZED REPRESENTATIVE <i>Jammy K. Johnson</i>
---	--

© 1988-2015 ACORD CORPORATION. All rights reserved.



CERTIFICATE OF LIABILITY INSURANCE

DATE (MM/DD/YYYY)

06/21/2022

THIS CERTIFICATE IS ISSUED AS A MATTER OF INFORMATION ONLY AND CONFERS NO RIGHTS UPON THE CERTIFICATE HOLDER. THIS CERTIFICATE DOES NOT AFFIRMATIVELY OR NEGATIVELY AMEND, EXTEND OR ALTER THE COVERAGE AFFORDED BY THE POLICIES BELOW. THIS CERTIFICATE OF INSURANCE DOES NOT CONSTITUTE A CONTRACT BETWEEN THE ISSUING INSURER(S), AUTHORIZED REPRESENTATIVE OR PRODUCER, AND THE CERTIFICATE HOLDER.

IMPORTANT: If the certificate holder is an **ADDITIONAL INSURED**, the policy(ies) must have **ADDITIONAL INSURED** provisions or be endorsed. If **SUBROGATION IS WAIVED**, subject to the terms and conditions of the policy, certain policies may require an endorsement. A statement on this certificate does not confer rights to the certificate holder in lieu of such endorsement(s).

PRODUCER Mckinley Financial Services 2890 W State Road 84, Suite 119 Fort Lauderdale FL 33312		CONTACT NAME: Martha Julius PHONE (A/C No. Ext): (954) 938-2685 E-MAIL ADDRESS: mjulius@mckinleyinsurance.com FAX (A/C No.): (954) 938-2695	
INSURED Dickey Consulting Services, Inc. 1033 Sistrunk Blvd Ft Lauderdale FL 33311		INSURER(S) AFFORDING COVERAGE INSURER A: HISCOX INSURANCE COMPANY INC INSURER B: ASCENDANT UNDERWRITERS LLC INSURER C: INSURER D: INSURER E: INSURER F:	
		NAIC # 10200	

COVERAGES

CERTIFICATE NUMBER:

REVISION NUMBER:

THIS IS TO CERTIFY THAT THE POLICIES OF INSURANCE LISTED BELOW HAVE BEEN ISSUED TO THE INSURED NAMED ABOVE FOR THE POLICY PERIOD INDICATED. NOTWITHSTANDING ANY REQUIREMENT, TERM OR CONDITION OF ANY CONTRACT OR OTHER DOCUMENT WITH RESPECT TO WHICH THIS CERTIFICATE MAY BE ISSUED OR MAY PERTAIN, THE INSURANCE AFFORDED BY THE POLICIES DESCRIBED HEREIN IS SUBJECT TO ALL THE TERMS, EXCLUSIONS AND CONDITIONS OF SUCH POLICIES. LIMITS SHOWN MAY HAVE BEEN REDUCED BY PAID CLAIMS.

INSR LTR	TYPE OF INSURANCE	ADDL INSD	SUBR WVD	POLICY NUMBER	POLICY EFF (MM/DD/YYYY)	POLICY EXP (MM/DD/YYYY)	LIMITS	
A	<input checked="" type="checkbox"/> COMMERCIAL GENERAL LIABILITY <input type="checkbox"/> CLAIMS-MADE <input checked="" type="checkbox"/> OCCUR GEN'L AGGREGATE LIMIT APPLIES PER: <input type="checkbox"/> POLICY <input type="checkbox"/> PROJECT <input type="checkbox"/> LOC OTHER:	Y	N	UDC-4872159-CGL	06/17/2022	06/17/2023	EACH OCCURRENCE \$ 2,000,000 DAMAGE TO RENTED PREMISES (Ea occurrence) \$ 100,000 MED EXP (Any one person) \$ 5,000 PERSONAL & ADV INJURY \$ GENERAL AGGREGATE \$ 2,000,000 PRODUCTS - COMP/OP AGG \$ S/T Gen Agg, \$	
A	AUTOMOBILE LIABILITY <input type="checkbox"/> ANY AUTO <input type="checkbox"/> OWNED AUTOS ONLY <input type="checkbox"/> SCHEDULED AUTOS <input checked="" type="checkbox"/> HIRED AUTOS ONLY <input checked="" type="checkbox"/> NON-OWNED AUTOS ONLY	N	N	UDC-4872159-CGL	06/17/2022	06/17/2023	COMBINED SINGLE LIMIT (Ea accident) \$ BODILY INJURY (Per person) \$ BODILY INJURY (Per accident) \$ PROPERTY DAMAGE (Per accident) \$ CGL HNOA Limit (per a \$ 1,000,000	
	UMBRELLA LIAB EXCESS LIAB OCCUR CLAIMS-MADE DED RETENTION \$						EACH OCCURRENCE \$ AGGREGATE \$ \$	
B	WORKERS COMPENSATION AND EMPLOYERS' LIABILITY ANY PROPRIETOR/PARTNER/EXECUTIVE OFFICER/MEMBER EXCLUDED? (Mandatory in NH) If yes, describe under DESCRIPTION OF OPERATIONS below	Y/N	N/A	N	WC-610916-0	03/20/2022	03/20/2023	PER STATUTE OTH-ER E.L. EACH ACCIDENT \$ 1,000,000 E.L. DISEASE - EA EMPLOYEE \$ 1,000,000 E.L. DISEASE - POLICY LIMIT \$ 1,000,000

DESCRIPTION OF OPERATIONS / LOCATIONS / VEHICLES (ACORD 101, Additional Remarks Schedule, may be attached if more space is required)

Keolis and Broward County named additional insured. 30 DAYS NOTICE OF CANCELLATION

CERTIFICATE HOLDER

CANCELLATION

Broward County Attn: Ground Transportation Section 320 Terminal Drive, Ste 300 Fort Lauderdale FL 33315	SHOULD ANY OF THE ABOVE DESCRIBED POLICIES BE CANCELLED BEFORE THE EXPIRATION DATE THEREOF, NOTICE WILL BE DELIVERED IN ACCORDANCE WITH THE POLICY PROVISIONS. AUTHORIZED REPRESENTATIVE
--	---

© 1988-2015 ACORD CORPORATION. All rights reserved.

ACORD 25 (2016/03)

The ACORD name and logo are registered marks of ACORD



CERTIFICATE OF LIABILITY INSURANCE

 DATE (MM/DD/YYYY)
04/04/2022

THIS CERTIFICATE IS ISSUED AS A MATTER OF INFORMATION ONLY AND CONFERS NO RIGHTS UPON THE CERTIFICATE HOLDER. THIS CERTIFICATE DOES NOT AFFIRMATIVELY OR NEGATIVELY AMEND, EXTEND OR ALTER THE COVERAGE AFFORDED BY THE POLICIES BELOW. THIS CERTIFICATE OF INSURANCE DOES NOT CONSTITUTE A CONTRACT BETWEEN THE ISSUING INSURER(S), AUTHORIZED REPRESENTATIVE OR PRODUCER, AND THE CERTIFICATE HOLDER.

IMPORTANT: If the certificate holder is an **ADDITIONAL INSURED**, the policy(ies) must have **ADDITIONAL INSURED** provisions or be endorsed. If **SUBROGATION IS WAIVED**, subject to the terms and conditions of the policy, certain policies may require an endorsement. A statement on this certificate does not confer rights to the certificate holder in lieu of such endorsement(s).

PRODUCER Willis Towers Watson Midwest, Inc. c/o 26 Century Blvd P.O. Box 305191 Nashville, TN 372305191 USA	CONTACT NAME: Willis Towers Watson Certificate Center PHONE (A/C, No, Ext): 1-877-945-7378 FAX (A/C, No): 1-888-467-2378 E-MAIL ADDRESS: certificates@willis.com														
INSURED EXP US Services, Inc. 2601 Westhall Lane Maitland, FL 32751	<table border="1"> <thead> <tr> <th data-bbox="805 459 1386 485">INSURER(S) AFFORDING COVERAGE</th> <th data-bbox="1386 459 1515 485">NAIC #</th> </tr> </thead> <tbody> <tr> <td data-bbox="805 485 1386 510">INSURER A: XL Insurance America Inc</td> <td data-bbox="1386 485 1515 510">24554</td> </tr> <tr> <td data-bbox="805 510 1386 535">INSURER B: National Fire Insurance Company of Hartford</td> <td data-bbox="1386 510 1515 535">20478</td> </tr> <tr> <td data-bbox="805 535 1386 560">INSURER C: Continental Casualty Company</td> <td data-bbox="1386 535 1515 560">20443</td> </tr> <tr> <td data-bbox="805 560 1386 585">INSURER D: AIG Insurance Company of Canada</td> <td data-bbox="1386 560 1515 585">B1206</td> </tr> <tr> <td data-bbox="805 585 1386 611">INSURER E:</td> <td data-bbox="1386 585 1515 611"></td> </tr> <tr> <td data-bbox="805 611 1386 636">INSURER F:</td> <td data-bbox="1386 611 1515 636"></td> </tr> </tbody> </table>	INSURER(S) AFFORDING COVERAGE	NAIC #	INSURER A: XL Insurance America Inc	24554	INSURER B: National Fire Insurance Company of Hartford	20478	INSURER C: Continental Casualty Company	20443	INSURER D: AIG Insurance Company of Canada	B1206	INSURER E:		INSURER F:	
INSURER(S) AFFORDING COVERAGE	NAIC #														
INSURER A: XL Insurance America Inc	24554														
INSURER B: National Fire Insurance Company of Hartford	20478														
INSURER C: Continental Casualty Company	20443														
INSURER D: AIG Insurance Company of Canada	B1206														
INSURER E:															
INSURER F:															

COVERAGES

CERTIFICATE NUMBER: W24453769

REVISION NUMBER:

THIS IS TO CERTIFY THAT THE POLICIES OF INSURANCE LISTED BELOW HAVE BEEN ISSUED TO THE INSURED NAMED ABOVE FOR THE POLICY PERIOD INDICATED. NOTWITHSTANDING ANY REQUIREMENT, TERM OR CONDITION OF ANY CONTRACT OR OTHER DOCUMENT WITH RESPECT TO WHICH THIS CERTIFICATE MAY BE ISSUED OR MAY PERTAIN, THE INSURANCE AFFORDED BY THE POLICIES DESCRIBED HEREIN IS SUBJECT TO ALL THE TERMS, EXCLUSIONS AND CONDITIONS OF SUCH POLICIES. LIMITS SHOWN MAY HAVE BEEN REDUCED BY PAID CLAIMS.

INSR LTR	TYPE OF INSURANCE	ADDL INSD	SUBR WVD	POLICY NUMBER	POLICY EFF (MM/DD/YYYY)	POLICY EXP (MM/DD/YYYY)	LIMITS
A	<input checked="" type="checkbox"/> COMMERCIAL GENERAL LIABILITY						EACH OCCURRENCE \$ 2,000,000
	<input type="checkbox"/> CLAIMS-MADE <input checked="" type="checkbox"/> OCCUR						DAMAGE TO RENTED PREMISES (Ea occurrence) \$ 2,000,000
	<input checked="" type="checkbox"/> Contractual Liability			US00057823LI22A	03/31/2022	03/31/2023	MED EXP (Any one person) \$ 25,000
	GEN'L AGGREGATE LIMIT APPLIES PER:						PERSONAL & ADV INJURY \$ 2,000,000
	<input type="checkbox"/> POLICY <input checked="" type="checkbox"/> PRO-JECT <input type="checkbox"/> LOC						GENERAL AGGREGATE \$ 2,000,000
	OTHER:						PRODUCTS - COMP/OP AGG \$ 2,000,000
B	AUTOMOBILE LIABILITY						COMBINED SINGLE LIMIT (Ea accident) \$ 1,000,000
	<input checked="" type="checkbox"/> ANY AUTO			6076413496	03/31/2022	03/31/2023	BODILY INJURY (Per person) \$
	<input type="checkbox"/> OWNED AUTOS ONLY						BODILY INJURY (Per accident) \$
	<input type="checkbox"/> HIRED AUTOS ONLY						PROPERTY DAMAGE (Per accident) \$
	<input type="checkbox"/> AUTOS ONLY						\$
	UMBRELLA LIAB						EACH OCCURRENCE \$
	EXCESS LIAB						AGGREGATE \$
	<input type="checkbox"/> DED <input type="checkbox"/> RETENTION \$						\$
C	WORKERS COMPENSATION AND EMPLOYERS' LIABILITY						<input checked="" type="checkbox"/> PER STATUTE <input type="checkbox"/> OTH-ER
	ANY PROPRIETOR/PARTNER/EXECUTIVE OFFICER/MEMBER EXCLUDED? (Mandatory in NH)			6072004033	03/31/2022	03/31/2023	E.L. EACH ACCIDENT \$ 1,000,000
	If yes, describe under DESCRIPTION OF OPERATIONS below						E.L. DISEASE - EA EMPLOYEE \$ 1,000,000
	Professional Liability			061127095	03/31/2022	03/31/2023	E.L. DISEASE - POLICY LIMIT \$ 1,000,000
D							Per Claim \$3,000,000
							Aggregate \$3,000,000

DESCRIPTION OF OPERATIONS / LOCATIONS / VEHICLES (ACORD 101, Additional Remarks Schedule, may be attached if more space is required)


RE: RFQ #12644-626 - General Engineering Aviation Consultant Services

The City, a Florida municipal corporation, its officials, employees, and volunteers are included as Additional Insureds as respects to General Liability and Auto Liability.

General Liability policy shall be Primary and Non-Contributory with any other insurance in force for or which may be

CERTIFICATE HOLDER

CANCELLATION

City of Fort Lauderdale 100 N. Andrews Avenue Fort Lauderdale, FL 33301	SHOULD ANY OF THE ABOVE DESCRIBED POLICIES BE CANCELLED BEFORE THE EXPIRATION DATE THEREOF, NOTICE WILL BE DELIVERED IN ACCORDANCE WITH THE POLICY PROVISIONS. AUTHORIZED REPRESENTATIVE 
---	---

© 1988-2016 ACORD CORPORATION. All rights reserved.

ACORD 25 (2016/03)

The ACORD name and logo are registered marks of ACORD

SR ID: 22421455

BATCH: 2472714

8/29/2023

BidSync

 Michael Baker
 INTERNAL EXHIBIT 5

78

34

p. 165

Page 43 of 65

Client#: 1053971

KEITHAS1

ACORD™**CERTIFICATE OF LIABILITY INSURANCE**

DATE (MM/DD/YYYY)

2/18/2022

THIS CERTIFICATE IS ISSUED AS A MATTER OF INFORMATION ONLY AND CONFERS NO RIGHTS UPON THE CERTIFICATE HOLDER. THIS CERTIFICATE DOES NOT AFFIRMATIVELY OR NEGATIVELY AMEND, EXTEND OR ALTER THE COVERAGE AFFORDED BY THE POLICIES BELOW. THIS CERTIFICATE OF INSURANCE DOES NOT CONSTITUTE A CONTRACT BETWEEN THE ISSUING INSURER(S), AUTHORIZED REPRESENTATIVE OR PRODUCER, AND THE CERTIFICATE HOLDER.

IMPORTANT: If the certificate holder is an ADDITIONAL INSURED, the policy(ies) must have ADDITIONAL INSURED provisions or be endorsed. If SUBROGATION IS WAIVED, subject to the terms and conditions of the policy, certain policies may require an endorsement. A statement on this certificate does not confer any rights to the certificate holder in lieu of such endorsement(s).

PRODUCER USI Insurance Services, LLC 2502 N Rocky Point Drive Suite 400 Tampa, FL 33607		CONTACT NAME: PHONE (A/C, No, Ext): 813 321-7500 FAX (A/C, No): E-MAIL ADDRESS:	
INSURED Keith and Associates, Inc. dba KEITH 301 E Atlantic Blvd. Pompano Beach, FL 33060		INSURER(S) AFFORDING COVERAGE INSURER A : Transportation Insurance Company INSURER B : Continental Insurance Company INSURER C : National Fire Insurance Co. of Hartford INSURER D : Arch Insurance Company INSURER E : INSURER F :	
		NAIC # 20494 35289 20478 11150	

COVERAGES**CERTIFICATE NUMBER:****REVISION NUMBER:**


THIS IS TO CERTIFY THAT THE POLICIES OF INSURANCE LISTED BELOW HAVE BEEN ISSUED TO THE INSURED NAMED ABOVE FOR THE POLICY PERIOD INDICATED. NOTWITHSTANDING ANY REQUIREMENT, TERM OR CONDITION OF ANY CONTRACT OR OTHER DOCUMENT WITH RESPECT TO WHICH THIS CERTIFICATE MAY BE ISSUED OR MAY PERTAIN, THE INSURANCE AFFORDED BY THE POLICIES DESCRIBED HEREIN IS SUBJECT TO ALL THE TERMS, EXCLUSIONS AND CONDITIONS OF SUCH POLICIES. LIMITS SHOWN MAY HAVE BEEN REDUCED BY PAID CLAIMS.

INSR LTR	TYPE OF INSURANCE	ADDL INSR	SUBR WVD	POLICY NUMBER	POLICY EFF (MM/DD/YYYY)	POLICY EXP (MM/DD/YYYY)	LIMITS
A	<input checked="" type="checkbox"/> COMMERCIAL GENERAL LIABILITY <input type="checkbox"/> CLAIMS-MADE <input checked="" type="checkbox"/> OCCUR GEN'L AGGREGATE LIMIT APPLIES PER: <input type="checkbox"/> POLICY <input checked="" type="checkbox"/> PRO-JECT <input type="checkbox"/> LOC OTHER:	X	X	7018350787	02/19/2022	02/19/2023	EACH OCCURRENCE \$1,000,000 DAMAGE TO RENTED PREMISES (Ea occurrence) \$1,000,000 MED EXP (Any one person) \$15,000 PERSONAL & ADV INJURY \$1,000,000 GENERAL AGGREGATE \$2,000,000 PRODUCTS - COM/OP AGG \$2,000,000 \$
B	AUTOMOBILE LIABILITY <input checked="" type="checkbox"/> ANY AUTO OWNED AUTOS ONLY <input checked="" type="checkbox"/> HIRED AUTOS ONLY <input type="checkbox"/> SCHEDULED AUTOS <input checked="" type="checkbox"/> NON-OWNED AUTOS ONLY	X	X	7018350773	02/19/2022	02/19/2023	COMBINED SINGLE LIMIT (Ea accident) \$1,000,000 BODILY INJURY (Per person) \$ BODILY INJURY (Per accident) \$ PROPERTY DAMAGE (Per accident) \$ \$
B	<input checked="" type="checkbox"/> UMBRELLA LIAB <input checked="" type="checkbox"/> OCCUR <input type="checkbox"/> EXCESS LIAB <input type="checkbox"/> CLAIMS-MADE <input type="checkbox"/> DED <input checked="" type="checkbox"/> RETENTION \$0	X	X	7018350742	02/19/2022	02/19/2023	EACH OCCURRENCE \$4,000,000 AGGREGATE \$4,000,000 \$
C	WORKERS COMPENSATION AND EMPLOYERS' LIABILITY ANY PROPRIETOR/PARTNER/EXECUTIVE OFFICER/MEMBER EXCLUDED? (Mandatory in NH) If yes, describe under DESCRIPTION OF OPERATIONS below		X	7018350756	02/19/2022	02/19/2023	<input checked="" type="checkbox"/> PER STATUTE <input type="checkbox"/> OTH-ER E.L. EACH ACCIDENT \$1,000,000 E.L. DISEASE - EA EMPLOYEE \$1,000,000 E.L. DISEASE - POLICY LIMIT \$1,000,000
D	Professional Liability			CPP006493602	02/19/2022	02/19/2023	\$2,000,000 per claim \$6,000,000 annl aggr.

DESCRIPTION OF OPERATIONS / LOCATIONS / VEHICLES (ACORD 101, Additional Remarks Schedule, may be attached if more space is required)

Professional Liability coverage is written on a claims-made basis.

CERTIFICATE HOLDER**CANCELLATION**

Proof of Coverage	SHOULD ANY OF THE ABOVE DESCRIBED POLICIES BE CANCELLED BEFORE THE EXPIRATION DATE THEREOF, NOTICE WILL BE DELIVERED IN ACCORDANCE WITH THE POLICY PROVISIONS.
	AUTHORIZED REPRESENTATIVE 

© 1988-2015 ACORD CORPORATION. All rights reserved.



CERTIFICATE OF LIABILITY INSURANCE

DATE (MM/DD/YYYY)

08/23/22

THIS CERTIFICATE IS ISSUED AS A MATTER OF INFORMATION ONLY AND CONFERS NO RIGHTS UPON THE CERTIFICATE HOLDER. THIS CERTIFICATE DOES NOT AFFIRMATIVELY OR NEGATIVELY AMEND, EXTEND OR ALTER THE COVERAGE AFFORDED BY THE POLICIES BELOW. THIS CERTIFICATE OF INSURANCE DOES NOT CONSTITUTE A CONTRACT BETWEEN THE ISSUING INSURER(S), AUTHORIZED REPRESENTATIVE OR PRODUCER, AND THE CERTIFICATE HOLDER.

IMPORTANT: If the certificate holder is an ADDITIONAL INSURED, the policy(ies) must have ADDITIONAL INSURED provisions or be endorsed. If SUBROGATION IS WAIVED, subject to the terms and conditions of the policy, certain policies may require an endorsement. A statement on this certificate does not confer rights to the certificate holder in lieu of such endorsement(s).

PRODUCER FLORIDA DESIGN INSURANCE LLC 4707 W Gandy Blvd Ste 15 Tampa, FL 33611 License #:	CONTACT NAME: TKJ PHONE (A/C, No, Ext): (813)600-5379 FAX (A/C, No): E-MAIL ADDRESS: tjohnson@floridadesigninsurance.com														
INSURED Quantum Electrical Engineering, Inc 5571 N. University Blvd Suite 101 Coral Springs, FL 33067	<table border="1" style="width: 100%; border-collapse: collapse;"> <tr> <th style="text-align: left;">INSURER(S) AFFORDING COVERAGE</th> <th style="text-align: left;">NAIC #</th> </tr> <tr> <td>INSURER A : Twin City Fire Insurance Co A+</td> <td>29459</td> </tr> <tr> <td>INSURER B : Hartford Casualty Insurance Co</td> <td>29424</td> </tr> <tr> <td>INSURER C : Travelers Casualty and Surety</td> <td>19046</td> </tr> <tr> <td>INSURER D :</td> <td></td> </tr> <tr> <td>INSURER E :</td> <td></td> </tr> <tr> <td>INSURER F :</td> <td></td> </tr> </table>	INSURER(S) AFFORDING COVERAGE	NAIC #	INSURER A : Twin City Fire Insurance Co A+	29459	INSURER B : Hartford Casualty Insurance Co	29424	INSURER C : Travelers Casualty and Surety	19046	INSURER D :		INSURER E :		INSURER F :	
INSURER(S) AFFORDING COVERAGE	NAIC #														
INSURER A : Twin City Fire Insurance Co A+	29459														
INSURER B : Hartford Casualty Insurance Co	29424														
INSURER C : Travelers Casualty and Surety	19046														
INSURER D :															
INSURER E :															
INSURER F :															

COVERAGES	CERTIFICATE NUMBER:	REVISION NUMBER:																																																																																																								
<p>THIS IS TO CERTIFY THAT THE POLICIES OF INSURANCE LISTED BELOW HAVE BEEN ISSUED TO THE INSURED NAMED ABOVE FOR THE POLICY PERIOD INDICATED. NOTWITHSTANDING ANY REQUIREMENT, TERM OR CONDITION OF ANY CONTRACT OR OTHER DOCUMENT WITH RESPECT TO WHICH THIS CERTIFICATE MAY BE ISSUED OR MAY PERTAIN, THE INSURANCE AFFORDED BY THE POLICIES DESCRIBED HEREIN IS SUBJECT TO ALL THE TERMS, EXCLUSIONS AND CONDITIONS OF SUCH POLICIES. LIMITS SHOWN MAY HAVE BEEN REDUCED BY PAID CLAIMS.</p>																																																																																																										
<table border="1" style="width: 100%; border-collapse: collapse;"> <tr> <th style="width: 5%;">INSR LTR</th> <th style="width: 25%;">TYPE OF INSURANCE</th> <th style="width: 5%;">ADDL INSD</th> <th style="width: 5%;">SUBR WVD</th> <th style="width: 20%;">POLICY NUMBER</th> <th style="width: 10%;">POLICY EFF (MM/DD/YYYY)</th> <th style="width: 10%;">POLICY EXP (MM/DD/YYYY)</th> <th style="width: 30%;">LIMITS</th> </tr> <tr> <td rowspan="4" style="text-align: center; vertical-align: middle;">A</td> <td> <input checked="" type="checkbox"/> COMMERCIAL GENERAL LIABILITY <input type="checkbox"/> CLAIMS-MADE <input checked="" type="checkbox"/> OCCUR <input checked="" type="checkbox"/> XCU </td> <td rowspan="4" style="text-align: center; vertical-align: middle;">Y</td> <td rowspan="4" style="text-align: center; vertical-align: middle;">Y</td> <td rowspan="4" style="text-align: center; vertical-align: middle;">39SBMAD7194</td> <td rowspan="4" style="text-align: center; vertical-align: middle;">08/26/22</td> <td rowspan="4" style="text-align: center; vertical-align: middle;">08/26/23</td> <td>EACH OCCURRENCE \$ 2,000,000</td> </tr> <tr> <td> GEN'L AGGREGATE LIMIT APPLIES PER: <input checked="" type="checkbox"/> POLICY <input type="checkbox"/> PROJECT <input type="checkbox"/> LOC OTHER: </td> <td>DAMAGE TO RENTED PREMISES (Ea occurrence) \$ 2,000,000</td> </tr> <tr> <td></td> <td>MED EXP (Any one person) \$ 10,000</td> </tr> <tr> <td></td> <td>PERSONAL & ADV INJURY \$ 2,000,000</td> </tr> <tr> <td></td> <td></td> <td></td> <td></td> <td></td> <td></td> <td></td> <td>GENERAL AGGREGATE \$ 4,000,000</td> </tr> <tr> <td></td> <td></td> <td></td> <td></td> <td></td> <td></td> <td></td> <td>PRODUCTS - COMP/OP AGG \$ 4,000,000</td> </tr> <tr> <td></td> <td></td> <td></td> <td></td> <td></td> <td></td> <td></td> <td>\$</td> </tr> <tr> <td rowspan="4" style="text-align: center; vertical-align: middle;">B</td> <td> AUTOMOBILE LIABILITY <input type="checkbox"/> ANY AUTO <input type="checkbox"/> OWNED AUTOS ONLY <input checked="" type="checkbox"/> HIRED AUTOS ONLY <input type="checkbox"/> SCHEDULED AUTOS <input checked="" type="checkbox"/> NON-OWNED AUTOS ONLY </td> <td rowspan="4" style="text-align: center; vertical-align: middle;">Y</td> <td rowspan="4" style="text-align: center; vertical-align: middle;">Y</td> <td rowspan="4" style="text-align: center; vertical-align: middle;">39SBMAD7194</td> <td rowspan="4" style="text-align: center; vertical-align: middle;">08/26/22</td> <td rowspan="4" style="text-align: center; vertical-align: middle;">08/26/23</td> <td>COMBINED SINGLE LIMIT (Ea accident) \$</td> </tr> <tr> <td></td> <td>BODILY INJURY (Per person) \$</td> </tr> <tr> <td></td> <td>BODILY INJURY (Per accident) \$</td> </tr> <tr> <td></td> <td>PROPERTY DAMAGE (Per accident) \$</td> </tr> <tr> <td></td> <td></td> <td></td> <td></td> <td></td> <td></td> <td></td> <td>\$</td> </tr> <tr> <td rowspan="4" style="text-align: center; vertical-align: middle;">A</td> <td> <input checked="" type="checkbox"/> UMBRELLA LIAB <input checked="" type="checkbox"/> OCCUR <input type="checkbox"/> EXCESS LIAB <input type="checkbox"/> CLAIMS-MADE DED <input type="checkbox"/> RETENTION \$ 0 </td> <td rowspan="4" style="text-align: center; vertical-align: middle;">Y</td> <td rowspan="4" style="text-align: center; vertical-align: middle;">Y</td> <td rowspan="4" style="text-align: center; vertical-align: middle;">39SBMAD7194</td> <td rowspan="4" style="text-align: center; vertical-align: middle;">08/26/22</td> <td rowspan="4" style="text-align: center; vertical-align: middle;">08/26/23</td> <td>EACH OCCURRENCE \$ 4,000,000</td> </tr> <tr> <td></td> <td>AGGREGATE \$ 4,000,000</td> </tr> <tr> <td></td> <td>\$</td> </tr> <tr> <td></td> <td>\$</td> </tr> <tr> <td rowspan="4" style="text-align: center; vertical-align: middle;">B</td> <td> WORKERS COMPENSATION AND EMPLOYERS' LIABILITY ANY PROPRIETOR/PARTNER/EXECUTIVE OFFICER/MEMBER EXCLUDED? <input checked="" type="checkbox"/> Y <input type="checkbox"/> N (Mandatory in NH) If yes, describe under DESCRIPTION OF OPERATIONS below </td> <td rowspan="4" style="text-align: center; vertical-align: middle;">N/A</td> <td rowspan="4" style="text-align: center; vertical-align: middle;">N/A</td> <td rowspan="4" style="text-align: center; vertical-align: middle;">44WECAF6AG1</td> <td rowspan="4" style="text-align: center; vertical-align: middle;">02/27/22</td> <td rowspan="4" style="text-align: center; vertical-align: middle;">02/27/23</td> <td>PER STATUTE <input type="checkbox"/> OTH-ER <input type="checkbox"/></td> </tr> <tr> <td></td> <td>E.L. EACH ACCIDENT \$ 1,000,000</td> </tr> <tr> <td></td> <td>E.L. DISEASE - EA EMPLOYEE \$ 1,000,000</td> </tr> <tr> <td></td> <td>E.L. DISEASE - POLICY LIMIT \$ 1,000,000</td> </tr> <tr> <td rowspan="2" style="text-align: center; vertical-align: middle;">C</td> <td> Professional Liability </td> <td rowspan="2" style="text-align: center; vertical-align: middle;"></td> <td rowspan="2" style="text-align: center; vertical-align: middle;"></td> <td rowspan="2" style="text-align: center; vertical-align: middle;">107304475</td> <td rowspan="2" style="text-align: center; vertical-align: middle;">08/26/22</td> <td rowspan="2" style="text-align: center; vertical-align: middle;">08/26/23</td> <td>Each Claim \$ 5,000,000</td> </tr> <tr> <td></td> <td>Annual Aggr \$ 5,000,000</td> </tr> </table>	INSR LTR	TYPE OF INSURANCE	ADDL INSD	SUBR WVD	POLICY NUMBER	POLICY EFF (MM/DD/YYYY)	POLICY EXP (MM/DD/YYYY)	LIMITS	A	<input checked="" type="checkbox"/> COMMERCIAL GENERAL LIABILITY <input type="checkbox"/> CLAIMS-MADE <input checked="" type="checkbox"/> OCCUR <input checked="" type="checkbox"/> XCU	Y	Y	39SBMAD7194	08/26/22	08/26/23	EACH OCCURRENCE \$ 2,000,000	GEN'L AGGREGATE LIMIT APPLIES PER: <input checked="" type="checkbox"/> POLICY <input type="checkbox"/> PROJECT <input type="checkbox"/> LOC OTHER:	DAMAGE TO RENTED PREMISES (Ea occurrence) \$ 2,000,000		MED EXP (Any one person) \$ 10,000		PERSONAL & ADV INJURY \$ 2,000,000								GENERAL AGGREGATE \$ 4,000,000								PRODUCTS - COMP/OP AGG \$ 4,000,000								\$	B	AUTOMOBILE LIABILITY <input type="checkbox"/> ANY AUTO <input type="checkbox"/> OWNED AUTOS ONLY <input checked="" type="checkbox"/> HIRED AUTOS ONLY <input type="checkbox"/> SCHEDULED AUTOS <input checked="" type="checkbox"/> NON-OWNED AUTOS ONLY	Y	Y	39SBMAD7194	08/26/22	08/26/23	COMBINED SINGLE LIMIT (Ea accident) \$		BODILY INJURY (Per person) \$		BODILY INJURY (Per accident) \$		PROPERTY DAMAGE (Per accident) \$								\$	A	<input checked="" type="checkbox"/> UMBRELLA LIAB <input checked="" type="checkbox"/> OCCUR <input type="checkbox"/> EXCESS LIAB <input type="checkbox"/> CLAIMS-MADE DED <input type="checkbox"/> RETENTION \$ 0	Y	Y	39SBMAD7194	08/26/22	08/26/23	EACH OCCURRENCE \$ 4,000,000		AGGREGATE \$ 4,000,000		\$		\$	B	WORKERS COMPENSATION AND EMPLOYERS' LIABILITY ANY PROPRIETOR/PARTNER/EXECUTIVE OFFICER/MEMBER EXCLUDED? <input checked="" type="checkbox"/> Y <input type="checkbox"/> N (Mandatory in NH) If yes, describe under DESCRIPTION OF OPERATIONS below	N/A	N/A	44WECAF6AG1	02/27/22	02/27/23	PER STATUTE <input type="checkbox"/> OTH-ER <input type="checkbox"/>		E.L. EACH ACCIDENT \$ 1,000,000		E.L. DISEASE - EA EMPLOYEE \$ 1,000,000		E.L. DISEASE - POLICY LIMIT \$ 1,000,000	C	Professional Liability			107304475	08/26/22	08/26/23	Each Claim \$ 5,000,000		Annual Aggr \$ 5,000,000
INSR LTR	TYPE OF INSURANCE	ADDL INSD	SUBR WVD	POLICY NUMBER	POLICY EFF (MM/DD/YYYY)	POLICY EXP (MM/DD/YYYY)	LIMITS																																																																																																			
A	<input checked="" type="checkbox"/> COMMERCIAL GENERAL LIABILITY <input type="checkbox"/> CLAIMS-MADE <input checked="" type="checkbox"/> OCCUR <input checked="" type="checkbox"/> XCU	Y	Y	39SBMAD7194	08/26/22	08/26/23	EACH OCCURRENCE \$ 2,000,000																																																																																																			
	GEN'L AGGREGATE LIMIT APPLIES PER: <input checked="" type="checkbox"/> POLICY <input type="checkbox"/> PROJECT <input type="checkbox"/> LOC OTHER:						DAMAGE TO RENTED PREMISES (Ea occurrence) \$ 2,000,000																																																																																																			
							MED EXP (Any one person) \$ 10,000																																																																																																			
							PERSONAL & ADV INJURY \$ 2,000,000																																																																																																			
							GENERAL AGGREGATE \$ 4,000,000																																																																																																			
							PRODUCTS - COMP/OP AGG \$ 4,000,000																																																																																																			
							\$																																																																																																			
B	AUTOMOBILE LIABILITY <input type="checkbox"/> ANY AUTO <input type="checkbox"/> OWNED AUTOS ONLY <input checked="" type="checkbox"/> HIRED AUTOS ONLY <input type="checkbox"/> SCHEDULED AUTOS <input checked="" type="checkbox"/> NON-OWNED AUTOS ONLY	Y	Y	39SBMAD7194	08/26/22	08/26/23	COMBINED SINGLE LIMIT (Ea accident) \$																																																																																																			
							BODILY INJURY (Per person) \$																																																																																																			
							BODILY INJURY (Per accident) \$																																																																																																			
							PROPERTY DAMAGE (Per accident) \$																																																																																																			
							\$																																																																																																			
A	<input checked="" type="checkbox"/> UMBRELLA LIAB <input checked="" type="checkbox"/> OCCUR <input type="checkbox"/> EXCESS LIAB <input type="checkbox"/> CLAIMS-MADE DED <input type="checkbox"/> RETENTION \$ 0	Y	Y	39SBMAD7194	08/26/22	08/26/23	EACH OCCURRENCE \$ 4,000,000																																																																																																			
							AGGREGATE \$ 4,000,000																																																																																																			
							\$																																																																																																			
							\$																																																																																																			
B	WORKERS COMPENSATION AND EMPLOYERS' LIABILITY ANY PROPRIETOR/PARTNER/EXECUTIVE OFFICER/MEMBER EXCLUDED? <input checked="" type="checkbox"/> Y <input type="checkbox"/> N (Mandatory in NH) If yes, describe under DESCRIPTION OF OPERATIONS below	N/A	N/A	44WECAF6AG1	02/27/22	02/27/23	PER STATUTE <input type="checkbox"/> OTH-ER <input type="checkbox"/>																																																																																																			
							E.L. EACH ACCIDENT \$ 1,000,000																																																																																																			
							E.L. DISEASE - EA EMPLOYEE \$ 1,000,000																																																																																																			
							E.L. DISEASE - POLICY LIMIT \$ 1,000,000																																																																																																			
C	Professional Liability			107304475	08/26/22	08/26/23	Each Claim \$ 5,000,000																																																																																																			
							Annual Aggr \$ 5,000,000																																																																																																			

 | |

DESCRIPTION OF OPERATIONS / LOCATIONS / VEHICLES (ACORD 101, Additional Remarks Schedule, may be attached if more space is required)

Professional Liability is written on a claims made and reported basis.

CERTIFICATE HOLDER	CANCELLATION
For Proposal Purposes	SHOULD ANY OF THE ABOVE DESCRIBED POLICIES BE CANCELLED BEFORE THE EXPIRATION DATE THEREOF, NOTICE WILL BE DELIVERED IN ACCORDANCE WITH THE POLICY PROVISIONS. AUTHORIZED REPRESENTATIVE <div style="text-align: center;"> </div>

© 1988-2015 ACORD CORPORATION. All rights reserved.



CERTIFICATE OF LIABILITY INSURANCE

DATE (MM/DD/YYYY)

5/26/2022

THIS CERTIFICATE IS ISSUED AS A MATTER OF INFORMATION ONLY AND CONFERS NO RIGHTS UPON THE CERTIFICATE HOLDER. THIS CERTIFICATE DOES NOT AFFIRMATIVELY OR NEGATIVELY AMEND, EXTEND OR ALTER THE COVERAGE AFFORDED BY THE POLICIES BELOW. THIS CERTIFICATE OF INSURANCE DOES NOT CONSTITUTE A CONTRACT BETWEEN THE ISSUING INSURER(S), AUTHORIZED REPRESENTATIVE OR PRODUCER, AND THE CERTIFICATE HOLDER.

IMPORTANT: If the certificate holder is an ADDITIONAL INSURED, the policy(ies) must have ADDITIONAL INSURED provisions or be endorsed. If SUBROGATION IS WAIVED, subject to the terms and conditions of the policy, certain policies may require an endorsement. A statement on this certificate does not confer rights to the certificate holder in lieu of such endorsement(s).

PRODUCER Ames & Gough 8300 Greensboro Drive Suite 980 McLean, VA 22102	CONTACT NAME: PHONE (A/C, No, Ext): (703) 827-2277 FAX (A/C, No): (703) 827-2279 E-MAIL ADDRESS: admin@amesgough.com														
INSURED Tierra South Florida, Inc. 2765 Vista Parkway, H7-H10 West Palm Beach, FL 33411	<table><tr><th>INSURER(S) AFFORDING COVERAGE</th><th>NAIC #</th></tr><tr><td>INSURER A : National Union Fire Insurance Company</td><td>19445</td></tr><tr><td>INSURER B : National Union Fire Ins. Co. of Pittsburgh, PA A (XV)</td><td>19445</td></tr><tr><td>INSURER C : Continental Insurance Company A(XV)</td><td>35289</td></tr><tr><td>INSURER D : Endurance American Specialty A+, XV</td><td>41718</td></tr><tr><td>INSURER E :</td><td></td></tr><tr><td>INSURER F :</td><td></td></tr></table>	INSURER(S) AFFORDING COVERAGE	NAIC #	INSURER A : National Union Fire Insurance Company	19445	INSURER B : National Union Fire Ins. Co. of Pittsburgh, PA A (XV)	19445	INSURER C : Continental Insurance Company A(XV)	35289	INSURER D : Endurance American Specialty A+, XV	41718	INSURER E :		INSURER F :	
INSURER(S) AFFORDING COVERAGE	NAIC #														
INSURER A : National Union Fire Insurance Company	19445														
INSURER B : National Union Fire Ins. Co. of Pittsburgh, PA A (XV)	19445														
INSURER C : Continental Insurance Company A(XV)	35289														
INSURER D : Endurance American Specialty A+, XV	41718														
INSURER E :															
INSURER F :															

COVERAGES

CERTIFICATE NUMBER:

REVISION NUMBER:

THIS IS TO CERTIFY THAT THE POLICIES OF INSURANCE LISTED BELOW HAVE BEEN ISSUED TO THE INSURED NAMED ABOVE FOR THE POLICY PERIOD INDICATED. NOTWITHSTANDING ANY REQUIREMENT, TERM OR CONDITION OF ANY CONTRACT OR OTHER DOCUMENT WITH RESPECT TO WHICH THIS CERTIFICATE MAY BE ISSUED OR MAY PERTAIN, THE INSURANCE AFFORDED BY THE POLICIES DESCRIBED HEREIN IS SUBJECT TO ALL THE TERMS, EXCLUSIONS AND CONDITIONS OF SUCH POLICIES. LIMITS SHOWN MAY HAVE BEEN REDUCED BY PAID CLAIMS.

INSR LTR	TYPE OF INSURANCE	ADDL INSD	SUBR WVD	POLICY NUMBER	POLICY EFF (MM/DD/YYYY)	POLICY EXP (MM/DD/YYYY)	LIMITS
A	<input checked="" type="checkbox"/> COMMERCIAL GENERAL LIABILITY <input type="checkbox"/> CLAIMS-MADE <input checked="" type="checkbox"/> OCCUR GEN'L AGGREGATE LIMIT APPLIES PER: <input type="checkbox"/> POLICY <input checked="" type="checkbox"/> PROJECT <input type="checkbox"/> LOC <input type="checkbox"/> OTHER:			9925653	6/1/2022	6/1/2023	EACH OCCURRENCE \$ 1,000,000 DAMAGE TO RENTED PREMISES (Ea occurrence) \$ 500,000 MED EXP (Any one person) \$ 25,000 PERSONAL & ADV INJURY \$ 1,000,000 GENERAL AGGREGATE \$ 2,000,000 PRODUCTS - COMP/OP AGG \$ 2,000,000
B	<input checked="" type="checkbox"/> AUTOMOBILE LIABILITY <input checked="" type="checkbox"/> ANY AUTO <input type="checkbox"/> OWNED AUTOS ONLY <input type="checkbox"/> SCHEDULED AUTOS <input type="checkbox"/> HIRED AUTOS ONLY <input type="checkbox"/> NON-OWNED AUTOS ONLY			4544957	6/1/2022	6/1/2023	COMBINED SINGLE LIMIT (Ea accident) \$ 1,000,000 BODILY INJURY (Per person) \$ BODILY INJURY (Per accident) \$ PROPERTY DAMAGE (Per accident) \$
C	<input checked="" type="checkbox"/> UMBRELLA LIAB <input checked="" type="checkbox"/> OCCUR <input type="checkbox"/> EXCESS LIAB <input type="checkbox"/> CLAIMS-MADE <input type="checkbox"/> DED <input checked="" type="checkbox"/> RETENTION \$ 10,000			6072223686	6/1/2022	6/1/2023	EACH OCCURRENCE \$ 5,000,000 AGGREGATE \$ 5,000,000
B	<input checked="" type="checkbox"/> WORKERS COMPENSATION AND EMPLOYERS' LIABILITY ANY PROPRIETOR/PARTNER/EXECUTIVE OFFICER/MEMBER EXCLUDED? (Mandatory in NH) <input checked="" type="checkbox"/> Y / <input checked="" type="checkbox"/> N If yes, describe under DESCRIPTION OF OPERATIONS below		N / A	039326871	6/1/2022	6/1/2023	<input checked="" type="checkbox"/> PER STATUTE <input type="checkbox"/> OTH-ER E.L. EACH ACCIDENT \$ 1,000,000 E.L. DISEASE - EA EMPLOYEE \$ 1,000,000 E.L. DISEASE - POLICY LIMIT \$ 1,000,000
D	Professional			DPL30020041900	6/1/2022	6/1/2023	Per Claim 1,000,000
D	Liability			DPL30020041900	6/1/2022	6/1/2023	Aggregate 2,000,000

DESCRIPTION OF OPERATIONS / LOCATIONS / VEHICLES (ACORD 101, Additional Remarks Schedule, may be attached if more space is required)

CERTIFICATE HOLDER

CANCELLATION

Proof of Insurance
Tierra South Florida, Inc.
2765 Vista Parkway, Suite 9
West Palm Beach, FL 33411

SHOULD ANY OF THE ABOVE DESCRIBED POLICIES BE CANCELLED BEFORE THE EXPIRATION DATE THEREOF, NOTICE WILL BE DELIVERED IN ACCORDANCE WITH THE POLICY PROVISIONS.

AUTHORIZED REPRESENTATIVE


Supplier Response Form

NON-COLLUSION STATEMENT:

By signing this offer, the vendor/contractor certifies that this offer is made independently and free from collusion. Vendor shall disclose below any City of Fort Lauderdale, FL officer or employee, or any relative of any such officer or employee who is an officer or director of, or has a material interest in, the vendor's business, who is in a position to influence this procurement.

Any Cityof LauderdaleFL officeror intowriting of specifications or requirements, solicitation of offers, decision to award, evaluation of offers, or any other activity pertinent to this procurement is presumed, for purposes hereof, to be in a position to influence this procurement.

For purposes hereof, a person has a material interest if they directly or indirectly own more than 5 percent of the total assets or capital stock of any business entity, or if they otherwise stand to personally gain if the contract is awarded to this vendor.

Text Box: 3.3. City employees may not contract with the City through any corporation or business entity in which they or their immediate family members hold a controlling financial interest (e.g. ownership of five (5) percent or more). 3.4. Immediate family members (spouse, parents and children) are also prohibited from contracting with the City subject to the same general rules.

In accordance with City of Fort Lauderdale, FL Policy and Standards Manual, 6.10.8.3,

Failure of a vendor to disclose any relationship described herein shall be reason for debarment in accordance with the provisions of the City Procurement Code.

<u>Name</u>	<u>Relationships</u>
-------------	----------------------

In the event the vendor does not indicate any names, the City shall interpret this to mean that the vendor has indicated that no such relationships exist.

Authorized Signature

Name (Printed)
Mark Kistler

Title
Regional Aviation Lead
Date
01/20/23

Supplier Response Form**CONTRACTOR'S CERTIFICATE OF COMPLIANCE WITH
NON-DISCRIMINATION PROVISIONS OF THE CONTRACT**

The completed and signed form should be returned with the Contractor's submittal. If not provided with submittal, the Contractor must submit within three business days of City's request. Contractor may be deemed non-responsive for failure to fully comply within stated timeframes.

Pursuant to the City Ordinance Sec. 2-187(c), bidders must certify compliance with the Non-Discrimination provision of the ordinance.

The Contractor shall not, in any of his/her/its activities, including employment, discriminate against any individual on the basis of race, color, national origin, religion, creed, sex, disability, sexual orientation, gender, gender identity, gender expression, or marital status.

1. The Contractor certifies and represents that he/she/it will comply with Section 2-187, Code of Ordinances of the City of Fort Lauderdale, Florida, as amended by Ordinance C-18-33 (collectively, "Section 2-187").
2. The failure of the Contractor to comply with Section 2-187 shall be deemed to be a material breach of this Agreement, entitling the City to pursue any remedy stated below or any remedy provided under applicable law.
3. The City may terminate this Agreement if the Contractor fails to comply with Section 2-187.
4. The City may retain all monies due or to become due until the Contractor complies with Section 2-187.
5. The Contractor may be subject to debarment or suspension proceedings. Such proceedings will be consistent with the procedures in [section 2-183](#) of the Code of Ordinances of the City of Fort Lauderdale, Florida.

Authorized Signature



Print Name and Title

Mark Kistler | Regional Aviation Lead

Date

01/20/23

Supplier Response Form**E-VERIFY AFFIRMATION STATEMENT**

RFP/Bid /Contract No:

Project Description:

General engineering aviation consultant services for the Fort Lauderdale Executive Airport Runway 9-27 Runway Pavement Rehabilitation Project located in Broward County, Florida.

Contractor/Proposer/Bidder acknowledges and agrees to utilize the U.S. Department of Homeland Security's E-Verify System to verify the employment eligibility of,

- (a) all persons employed by Contractor/Proposer/Bidder to perform employment duties within Florida during the term of the Contract, and,
- (b) all persons (including subcontractors/vendors) assigned by Contractor/Proposer/Bidder to perform work pursuant to the Contract.

The Contractor/Proposer/Bidder acknowledges and agrees that use of the U.S. Department of Homeland Security's E-Verify System during the term of the Contract is a condition of the Contract.

Contractor/Proposer/ Bidder Company Name:

Michael Baker International, Inc.

Authorized Company Person's Signature:



Authorized Company Person's Title:

Regional Aviation Lead

Date:

01/20/23

Supplier Response Form

BID/PROPOSAL CERTIFICATION

Please Note: It is the sole responsibility of the bidder to ensure that his bid is submitted electronically through www.BidSync.com prior to the bid opening date and time listed. Paper bid submittals will not be accepted. All fields below must be completed. If the field does not apply to you, please note N/A in that field.

If you are a foreign corporation, you may be required to obtain a certificate of authority from the department of state, in accordance with Florida Statute §607.1501 (visit <http://www.dos.state.fl.us/>).

Company: (Legal Registration) Michael Baker International, Inc. * EIN (Optional):
 Address: 110 East Broward Blvd Ste. 1700 *
 City: Fort Lauderdale * State: FL * Zip: 33301 *
 Telephone No.: 561-812-6403 * FAX No.: N/A * Email: mkistler@mbakerintl.com *

Delivery: Calendar days after receipt of Purchase Order (section 1.02 of General Conditions):

Total Bid Discount (section 1.05 of General Conditions):

Check box if your firm qualifies for MBE / SBE / WBE (section 1.09 of General Conditions): ☐

ADDENDUM ACKNOWLEDGEMENT - Proposer acknowledges that the following addenda have been received and are included in the proposal:

Addendum No.	Date Issued	Addendum No.	Date Issued	Addendum No.	Date Issued
1 *	01/04/23 *				

VARIANCES: If you take exception or have variances to any term, condition, specification, scope of service, or requirement in this competitive solicitation you must specify such exception or variance in the space provided below or reference in the space provided below all variances contained on other pages within your response. Additional pages may be attached if necessary. No exceptions or variances will be deemed to be part of the response submitted unless such is listed and contained in the space provided below. The City does not, by virtue of submitting a variance, necessarily accept any variances. If no statement is contained in the below space, it is hereby implied that your response is in full compliance with this competitive solicitation. If you do not have variances, simply mark N/A. **You must also click the "Take Exception" button.**

N/A

The below signatory hereby agrees to furnish the following article(s) or services at the price(s) and terms stated subject to all instructions, conditions, specifications addenda, legal advertisement, and conditions contained in the bid/proposal.

I have read all attachments including the specifications and fully understand what is required. By submitting this signed proposal, I will accept a contract if approved by the City and such acceptance covers all terms, conditions, and specifications of this bid/proposal. The below signatory also hereby agrees, by virtue of submitting or attempting to submit a response, that in no event shall the City's liability for respondent's direct, indirect, incidental, consequential, special or exemplary damages, expenses, or lost profits arising out of this competitive solicitation process, including but not limited to public advertisement, bid conferences, site visits, evaluations, oral presentations, or award proceedings exceed the amount of Five Hundred Dollars (\$500.00). This limitation shall not apply to claims arising under any provision of indemnification or the City's protest ordinance contained in this competitive solicitation.

Submitted by:

Mark Kistler *
Name (printed)

Mark Kistler *
Signature

01/20/23 *
Date

Regional Aviation Lead *
Title



We Make a Difference

MICHAEL BAKER INTERNATIONAL
12740 Gran Bay Pkwy W Ste 2110
Jacksonville, FL 32258

**CITY OF FORT
LAUDERDALE GENERAL
CONDITIONS**

These instructions and conditions are standard for all contracts for commodities or services issued through the City of Fort Lauderdale Procurement Services Division. The City may delete, supersede, or modify any of these standard instructions for a particular contract by indicating such change in the Invitation to Bid (ITB) Special Conditions, Technical Specifications, Instructions, Proposal Pages, Addenda, and Legal Advertisement. In this General Conditions document, Invitation to Bid (ITB), Request for Qualifications (RFQ), and Request for Proposal (RFP) are interchangeable.

PART I BIDDER PROPOSAL PAGE(S) CONDITIONS:

- 1.01 BIDDER ADDRESS:** The City maintains automated vendor address lists that have been generated for each specific Commodity Class item through our bid issuing service, BidSync. Notices of Invitations to Bid (ITB'S) are sent by e-mail to the selection of bidders who have fully registered with BidSync or faxed (if applicable) to every vendor on those lists, who may then view the bid documents online. Bidders who have been informed of a bid's availability in any other manner are responsible for registering with BidSync in order to view the bid documents. There is no fee for doing so. If you wish bid notifications be provided to another e-mail address or fax, please contact BidSync. If you wish purchase orders sent to a different address, please so indicate in your bid response. If you wish payments sent to a different address, please so indicate on your invoice.
- 1.02 DELIVERY:** Time will be of the essence for any orders placed as a result of this ITB. The City reserves the right to cancel any orders, or part thereof, without obligation if delivery is not made in accordance with the schedule specified by the Bidder and accepted by the City.
- 1.03 PACKING SLIPS:** It will be the responsibility of the awarded Contractor, to attach all packing slips to the OUTSIDE of each shipment. Packing slips must provide a detailed description of what is to be received and reference the City of Fort Lauderdale purchase order number that is associated with the shipment. Failure to provide a detailed packing slip attached to the outside of shipment may result in refusal of shipment at Contractor's expense.
- 1.04 PAYMENT TERMS AND CASH DISCOUNTS:** Payment terms, unless otherwise stated in this ITB, will be considered to be net 45 days after the date of satisfactory delivery at the place of acceptance and receipt of correct invoice at the office specified, whichever occurs last. Bidder may offer cash discounts for prompt payment but they will not be considered in determination of award. If a Bidder offers a discount, it is understood that the discount time will be computed from the date of satisfactory delivery, at the place of acceptance, and receipt of correct invoice, at the office specified, whichever occurs last.
- 1.05 TOTAL BID DISCOUNT:** If Bidder offers a discount for award of all items listed in the bid, such discount shall be deducted from the total of the firm net unit prices bid and shall be considered in tabulation and award of bid.
- 1.06 BIDS FIRM FOR ACCEPTANCE:** Bidder warrants, by virtue of bidding, that the bid and the prices quoted in the bid will be firm for acceptance by the City for a period of one hundred twenty (120) days from the date of bid opening unless otherwise stated in the ITB.
- 1.07 VARIANCES:** For purposes of bid evaluation, Bidders must indicate any variances, no matter how slight, from ITB General Conditions, Special Conditions, Specifications or Addenda in the space provided in the ITB. No variations or exceptions by a Bidder will be considered or deemed a part of the bid submitted unless such variances or exceptions are listed in the bid and referenced in the space provided on the bidder proposal pages. If variances are not stated, or referenced as required, it will be assumed that the product or service fully complies with the City's terms, conditions, and specifications.
- By receiving a bid, City does not necessarily accept any variances contained in the bid. All variances submitted are subject to review and approval by the City. If any bid contains material variances that, in the City's sole opinion, make that bid conditional in nature, the City reserves the right to reject the bid or part of the bid that is declared by the City as conditional.
- 1.08 NO BIDS:** If you do not intend to bid please indicate the reason, such as insufficient time to respond, do not offer product or service, unable to meet specifications, schedule would not permit, or any other reason, in the space provided in this ITB. Failure to bid or return no bid comments prior to the bid due and opening date and time, indicated in this ITB, may result in your firm being deleted from our Bidder's registration list for the Commodity Class Item requested in this ITB.
- 1.09 MINORITY AND WOMEN BUSINESS ENTERPRISE PARTICIPATION AND BUSINESS DEFINITIONS:** The City of Fort Lauderdale wants to increase the participation of Minority Business Enterprises (MBE), Women Business Enterprises (WBE), and Small Business Enterprises (SBE) in its procurement activities. If your firm qualifies in accordance with the below definitions, please indicate in the space provided in this ITB.

Minority Business Enterprise (MBE) "A Minority Business" is a business enterprise that is owned or controlled by one or more socially or economically disadvantaged persons. Such disadvantage may arise from cultural, racial, chronic economic circumstances or background or other similar cause. Such persons include, but are not limited to: Blacks, Hispanics, Asian Americans, and Native Americans.

The term "Minority Business Enterprise" means a business at least 51 percent of which is owned by minority group members or, in the case of a publicly owned business, at least 51 percent of the stock of which is owned by minority group members. For the purpose of the preceding sentence,

minority group members are citizens of the United States who include, but are not limited to: Blacks, Hispanics, Asian Americans, and Native Americans.

Women Business Enterprise (WBE) a "Women Owned or Controlled Business" is a business enterprise at least 51 percent of which is owned by females or, in the case of a publicly owned business, at least 51 percent of the stock of which is owned by females.

Small Business Enterprise (SBE) "Small Business" means a corporation, partnership, sole proprietorship, or other legal entity formed for the purpose of making a profit, which is independently owned and operated, has either fewer than 100 employees or less than \$1,000,000 in annual gross receipts.

BLACK, which includes persons having origins in any of the Black racial groups of Africa.

WHITE, which includes persons whose origins are Anglo-Saxon and Europeans and persons of Indo-European decent including Pakistani and East Indian.

HISPANIC, which includes persons of Mexican, Puerto Rican, Cuban, Central and South American, or other Spanish culture or origin, regardless of race.

NATIVE AMERICAN, which includes persons whose origins are American Indians, Eskimos, Aleuts, or Native Hawaiians.

ASIAN AMERICAN, which includes persons having origin in any of the original peoples of the Far East, Southeast Asia, the Indian subcontinent, or the Pacific Islands.

1.10 MINORITY-WOMEN BUSINESS ENTERPRISE PARTICIPATION

It is the desire of the City of Fort Lauderdale to increase the participation of minority (MBE) and women-owned (WBE) businesses in its contracting and procurement programs. While the City does not have any preference or set aside programs in place, it is committed to a policy of equitable participation for these firms. Proposers are requested to include in their proposals a narrative describing their past accomplishments and intended actions in this area. If proposers are considering minority or women owned enterprise participation in their proposal, those firms, and their specific duties have to be identified in the proposal. If a proposer is considered for award, he or she will be asked to meet with City staff so that the intended MBE/WBE participation can be formalized and included in the subsequent contract.

1.11 SCRUTINIZED COMPANIES

Subject to *Odebrecht Construction, Inc., v. Prasad*, 876 F.Supp.2d 1305 (S.D. Fla. 2012), *affirmed*, *Odebrecht Construction, Inc., v. Secretary, Florida Department of Transportation*, 715 F.3d 1268 (11th Cir. 2013), with regard to the "Cuba Amendment," the Contractor certifies that it is not on the Scrutinized Companies with Activities in Sudan List or the Scrutinized Companies with Activities in the Iran Petroleum Energy Sector List, and that it does not have business operations in Cuba or Syria, as provided in Section 287.135, Florida Statutes (2021), as may be amended or revised. The Contractor certifies that it is not on the Scrutinized Companies that Boycott Israel List created pursuant to Section 215.4725, Florida Statutes (2021), as may be amended or revised, and that it is not engaged in a boycott of Israel. The City may terminate this Agreement at the City's option if the Contractor is found to have submitted a false certification as provided under subsection (5) of Section 287.135, Florida Statutes (2021), as may be amended or revised, or been placed on the Scrutinized Companies with Activities in Sudan List or the Scrutinized Companies with Activities in the Iran Petroleum Energy Sector List or the Scrutinized Companies that Boycott Israel List created pursuant to Section 215.4725, Florida Statutes (2021), as may be amended or revised, or is engaged in a boycott of Israel or has been engaged in business operations in Cuba or Syria, as defined in Section 287.135, Florida Statutes (2021), as may be amended or revised.

By submitting a proposal or response, the company, principals, or owners certify that it is not listed on the Scrutinized Companies with Activities in Sudan List or listed on the Scrutinized Companies with Activities in the Iran Petroleum Energy Sector List or is engaged in business operations in Cuba or Syria.

1.12 DEBARRED OR SUSPENDED BIDDERS OR PROPOSERS

The bidder or proposer certifies, by submission of a response to this solicitation, that neither it nor its principals and subcontractors are presently debarred or suspended by any Federal department or agency.

Part II DEFINITIONS/ORDER OF PRECEDENCE:**2.01 BIDDING DEFINITIONS** The City will use the following definitions in its general conditions, special conditions, technical specifications, instructions to bidders, addenda and any other document used in the bidding process:

INVITATION TO BID (ITB) The solicitation document used for soliciting competitive sealed bids for goods or services.

INVITATION TO NEGOTIATE (ITN) All solicitation documents, regardless of medium, whether attached to or incorporated by reference in solicitations for responses from firms that invite proposals from interested and qualified firms so the city may enter into negotiations with the firm(s) determined most capable of providing the required goods or services.

REQUEST FOR PROPOSALS (RFP) A solicitation method used for soliciting competitive sealed proposals to determine the best value among proposals for goods or services for which price may not be the prevailing factor in award of the contract, or the scope of work, specifications or contract terms and conditions may be difficult to define. Such solicitation will consider the qualifications of the proposers along with evaluation of each proposal using identified and generally weighted evaluation criteria. RFPs may include price criteria whenever feasible, at the discretion of the city.

REQUEST FOR QUALIFICATIONS (RFQ) A solicitation method used for requesting statements of qualifications in order to determine the most qualified proposer for professional services.

BID – a price and terms quote received in response to an ITB.

PROPOSAL – a proposal received in response to an RFP.

BIDDER – Person or firm submitting a Bid.

PROPOSER – Person or firm submitting a Proposal.

RESPONSIVE BIDDER – A firm who has submitted a bid, offer, quote, or response which conforms in all material respects to the competitive solicitation document and all of its requirements.

RESPONSIBLE BIDDER – A firm who is fully capable of meeting all requirements of the solicitation and subsequent contract. The respondent must possess the full capability, including financial and technical, ability, business judgment, experience, qualifications, facilities, equipment, integrity, capability, and reliability, in all respects to perform fully the contract requirements and assure good faith performance as determined by the city.

FIRST RANKED PROPOSER – That Proposer, responding to a City RFP, whose Proposal is deemed by the City, the most advantageous to the City after applying the evaluation criteria contained in the RFP.

SELLER – Successful Bidder or Proposer who is awarded a Purchase Order or Contract to provide goods or services to the City.

CONTRACTOR – Any firm having a contract with the city. Also referred to as a "Vendor".

CONTRACT – All types of agreements, including purchase orders, for procurement of supplies, services, and construction, regardless of what these agreements may be called.

CONSULTANT – A firm providing professional services for the city.

2.02 SPECIAL CONDITIONS: Any and all Special Conditions contained in this ITB that may be in variance or conflict with these General Conditions shall have precedence over these General Conditions. If no changes or deletions to General Conditions are made in the Special Conditions, then the General Conditions shall prevail in their entirety,**PART III BIDDING AND AWARD PROCEDURES:****3.01 SUBMISSION AND RECEIPT OF BIDS:** To receive consideration, bids must be received prior to the bid opening date and time. Unless otherwise specified, Bidders should use the proposal forms provided by the City. These forms may be duplicated, but failure to use the forms may cause the bid to be rejected. Any erasures or corrections on the bid must be made in ink and initialed by Bidder in ink. All information submitted by the Bidder shall be printed, typewritten or filled in with pen and ink. Bids shall be signed in ink. Separate bids must be submitted for each ITB

issued by the City. Only send bids via facsimile transmission (FAX) if the ITB specifically states that bids sent via FAX will be considered. If such a statement is not included in the ITB, bids sent via FAX will be rejected. Bids will be publicly opened in the Procurement Office, or other designated area, in the presence of Bidders, the public, and City staff. Bidders and the public are invited and encouraged to attend bid openings. Bids will be tabulated and made available for review by Bidders and the public in accordance with applicable regulations.

- 3.02 MODEL NUMBER CORRECTIONS:** If the model number for the make specified in this ITB is incorrect, or no longer available and replaced with an updated model with new specifications, the Bidder shall enter the correct model number on the bidder proposal page. In the case of an updated model with new specifications, Bidder shall provide adequate information to allow the City to determine if the model bid meets the City's requirements.

Page 2

Rev. 8/2022

- 3.03 PRICES QUOTED:** Deduct trade discounts, and quote firm net prices. Give both unit price and extended total. In the case of a discrepancy in computing the amount of the bid, the unit price quoted will govern. All prices quoted shall be F.O.B. destination, freight prepaid (Bidder pays and bears freight charges, Bidder owns goods in transit and files any claims), unless otherwise stated in Special Conditions. Each item must be bid separately. No attempt shall be made to tie any item or items contained in the ITB with any other business with the City.
- 3.04 TAXES:** The City of Fort Lauderdale is exempt from Federal Excise and Florida Sales taxes on direct purchase of tangible property. Exemption number for EIN is 59-6000319, and State Sales tax exemption number is 85-8013875578C-1.
- 3.05 WARRANTIES OF USAGE:** Any quantities listed in this ITB as estimated or projected are provided for tabulation and information purposes only. No warranty or guarantee of quantities is given or implied. It is understood that the Contractor will furnish the City's needs as they arise.
- 3.06 APPROVED EQUAL:** When the technical specifications call for a brand name, manufacturer, make, model, or vendor catalog number with acceptance of APPROVED EQUAL, it shall be for the purpose of establishing a level of quality and features desired and acceptable to the City. In such cases, the City will be receptive to any unit that would be considered by qualified City personnel as an approved equal. In that the specified make and model represent a level of quality and features desired by the City, the Bidder must state clearly in the bid any variance from those specifications. It is the Bidder's responsibility to provide adequate information, in the bid, to enable the City to ensure that the bid meets the required criteria. If adequate information is not submitted with the bid, it may be rejected. The City will be the sole judge in determining if the item bid qualifies as an approved equal.
- 3.07 MINIMUM AND MANDATORY TECHNICAL SPECIFICATIONS:** The technical specifications may include items that are considered minimum, mandatory, or required. If any Bidder is unable to meet or exceed these items, and feels that the technical specifications are overly restrictive, the bidder must notify the Procurement Services Division immediately. Such notification must be received by the Procurement Services Division prior to the deadline contained in the ITB, for questions of a material nature, or prior to five (5) days before bid due and open date, whichever occurs first. If no such notification is received prior to that deadline, the City will consider the technical specifications to be acceptable to all bidders.
- 3.08 MISTAKES:** Bidders are cautioned to examine all terms, conditions, specifications, drawings, exhibits, addenda, delivery instructions and special conditions pertaining to the ITB. Failure of the Bidder to examine all pertinent documents shall not entitle the bidder to any relief from the conditions imposed in the contract.
- 3.09 SAMPLES AND DEMONSTRATIONS:** Samples or inspection of product may be requested to determine suitability. Unless otherwise specified in Special Conditions, samples shall be requested after the date of bid opening, and if requested, should be received by the City within seven (7) working days of request. Samples, when requested, must be furnished free of expense to the City and if not used in testing or destroyed, will upon request of the Bidder, be returned within thirty (30) days of bid award at Bidder's expense. When required, the City may request full demonstrations of units prior to award. When such demonstrations are requested, the Bidder shall respond promptly and arrange a demonstration at a convenient location. Failure to provide samples or demonstrations as specified by the City may result in rejection of a bid.
- 3.10 LIFE CYCLE COSTING:** If so specified in the ITB, the City may elect to evaluate equipment proposed on the basis of total cost of ownership. In using Life Cycle Costing, factors such as the following may be considered: estimated useful life, maintenance costs, cost of supplies, labor intensity, energy usage, environmental impact, and residual value. The City reserves the right to use those or other applicable criteria, in its sole opinion that will most accurately estimate total cost of use and ownership.
- 3.11 BIDDING ITEMS WITH RECYCLED CONTENT:** In addressing environmental concerns, the City of Fort Lauderdale encourages Bidders to submit bids or alternate bids containing items with recycled content. When submitting bids containing items with recycled content, Bidder shall provide documentation adequate for the City to verify the recycled content. The City prefers packaging consisting of materials that are degradable or able to be recycled. When specifically stated in the ITB, the City may give preference to bids containing items manufactured with recycled material or packaging that is able to be recycled.

- 3.12 USE OF OTHER GOVERNMENTAL CONTRACTS:** The City reserves the right to reject any part or all of any bids received and utilize other available governmental contracts, if such action is in its best interest.
- 3.13 QUALIFICATIONS/INSPECTION:** Bids will only be considered from firms normally engaged in providing the types of commodities/services specified herein. The City reserves the right to inspect the Bidder's facilities, equipment, personnel, and organization at any time, or to take any other action necessary to determine Bidder's ability to perform. The Chief Procurement Officer reserves the right to reject bids where evidence or evaluation is determined to indicate inability to perform.
- 3.14 BID SURETY:** If Special Conditions require a bid security, it shall be submitted in the amount stated. A bid security can be in the form of a bid bond or cashier's check. Bid security will be returned to the unsuccessful bidders as soon as practicable after opening of bids. Bid security will be returned to the successful bidder after acceptance of the performance bond, if required; acceptance of insurance coverage, if required; and full execution of contract documents, if required; or conditions as stated in Special Conditions.
- 3.15 PUBLIC RECORDS/TRADE SECRETS/COPYRIGHT:** The Proposer's response to the RFP is a public record pursuant to Florida law, which is subject to disclosure by the City under the State of Florida Public Records Law, Florida Statutes Chapter 119.07 ("Public Records Law"). The City shall permit public access to all documents, papers, letters or other material submitted in connection with this RFP and the Contract to be executed for this RFP, subject to the provisions of Chapter 119.07 of the Florida Statutes.

Any language contained in the Proposer's response to the RFP purporting to require confidentiality of any portion of the Proposer's response to the RFP, except to the extent that certain information is in the City's opinion a Trade Secret pursuant to Florida law, shall be void. If a Proposer submits any documents or other information to the City which the Proposer claims is Trade Secret information and exempt from Florida Statutes Chapter 119.07 ("Public Records Laws"), the Proposer shall clearly designate that it is a Trade Secret and that it is asserting that the document or information is exempt. The Proposer must specifically identify the exemption being claimed under Florida Statutes 119.07. The City shall be the final arbiter of whether any information contained in the Proposer's response to the RFP constitutes a Trade Secret. The city's determination of whether an exemption applies shall be final, and the proposer agrees to defend, indemnify, and hold harmless the City and the City's officers, employees, and agents, against any loss or damages incurred by any person or entity as a result of the City's treatment of records as public records. In addition, the proposer agrees to defend, indemnify, and hold harmless the City and the City's officers, employees, and agents, against any loss or damages incurred by any person or entity as a result of the City's treatment of records as exempt from disclosure or confidential. Proposals bearing copyright symbols or otherwise purporting to be subject to copyright protection in full or in part may be rejected. The proposer authorizes the City to publish, copy, and reproduce any and all documents submitted to the City bearing copyright symbols or otherwise purporting to be subject to copyright protection.

EXCEPT FOR CLEARLY MARKED PORTIONS THAT ARE BONA FIDE TRADE SECRETS PURSUANT TO FLORIDA LAW, DO NOT MARK YOUR RESPONSE TO THE RFP AS PROPRIETARY OR CONFIDENTIAL. DO NOT MARK YOUR RESPONSE TO THE RFP OR ANY PART THEREOF AS COPYRIGHTED.

Page 3

Rev. 8/2022

- 3.16 PROHIBITION OF INTEREST:** No contract will be awarded to a bidding firm which has City elected officials, officers or employees affiliated with it, unless the bidding firm has fully complied with current Florida State Statutes and City Ordinances relating to this issue. Bidders must disclose any such affiliation. Failure to disclose any such affiliation will result in disqualification of the Bidder and removal of the Bidder from the City's bidder lists and prohibition from engaging in any business with the City.
- 3.17 RESERVATIONS FOR AWARD AND REJECTION OF BIDS:** The City reserves the right to accept or reject any or all bids, part of bids, and to waive minor irregularities or variations to specifications contained in bids, and minor irregularities in the bidding process. The City also reserves the right to award the contract on a split order basis, lump sum basis, individual item basis, or such combination as shall best serve the interest of the City. The City reserves the right to make an award to the responsive and responsible bidder whose product or service meets the terms, conditions, and specifications of the ITB and whose bid is considered to best serve the City's interest. In determining the responsiveness of the offer and the responsibility of the Bidder, the following shall be considered when applicable: the ability, capacity and skill of the Bidder to perform as required; whether the Bidder can perform promptly, or within the time specified, without delay or interference; the character, integrity, reputation, judgment, experience and efficiency of the Bidder; the quality of past performance by the Bidder; the previous and existing compliance by the Bidder with related laws and ordinances; the sufficiency of the Bidder's financial resources; the availability, quality and adaptability of the Bidder's supplies or services to the required use; the ability of the Bidder to provide future maintenance, service or parts; the number and scope of conditions attached to the bid.
- If the ITB provides for a contract trial period, the City reserves the right, in the event the selected bidder does not perform satisfactorily, to award a trial period to the next ranked bidder or to award a contract to the next ranked bidder; if that bidder has successfully provided services to the City in the past. This procedure to continue until a bidder is selected or the contract is re-bid, is at the sole option of the City.
- 3.18 LEGAL REQUIREMENTS:** Applicable provisions of all federal, state, county laws, and local ordinances, rules and regulations, shall govern development, submittal and evaluation of all bids received in response hereto and shall govern any and all claims and disputes which may arise between person(s) submitting a bid response hereto and the City by and through its officers, employees and authorized representatives, or any other person, natural or otherwise; and lack of knowledge by any bidder shall not constitute a cognizable defense against the legal effect thereof.
- 3.19 BID PROTEST PROCEDURE:** Any proposer or bidder who is not recommended for award of a contract and who alleges a failure by the City to follow the City's Procurement Ordinance or any applicable law may protest to the Procurement Division – Deputy Director of Finance, by

delivering a letter of protest within five (5) days after a Notice of Intent to award is posted on the City's website at the following link:
<https://www.fortlauderdale.gov/government/departments-a-h/finance/procurement-services/notices-of-intent-to-award>

The complete protest ordinance may be found on the City's web site at the following link:

https://library.municode.com/fl/fort_lauderdale/codes/code_of_ordinances?nodeId=COOR_CH2AD_ARTVFI_DIV2PR_S2-182DIREPRAWINAW

PART IV BONDS AND INSURANCE

- 4.01 PERFORMANCE BOND:** If a performance bond is required in Special Conditions, the Contractor shall, within fifteen (15) working days after notification of award, furnish to the City a Performance Bond, payable to the City of Fort Lauderdale, Florida, in the face amount specified in Special Conditions as surety for faithful performance under the terms and conditions of the contract. If the bond is on an annual coverage basis, renewal for each succeeding year shall be submitted to the City thirty (30) days prior to the termination date of the existing Performance Bond. The Performance Bond must be executed by a surety company of recognized standing, authorized to do business in the State of Florida and having a resident agent.

Acknowledgement and agreement is given by both parties that the amount herein set for the Performance Bond is not intended to be nor shall be deemed to be in the nature of liquidated damages nor is it intended to limit the liability of the Contractor to the City in the event of a material breach of this Agreement by the Contractor.

- 4.02 INSURANCE:** The Contractor shall assume full responsibility and expense to obtain all necessary insurance as required by City or specified in Special Conditions.

The Contractor shall provide to the Procurement Services Division original certificates of coverage and receive notification of approval of those certificates by the City's Risk Manager prior to engaging in any activities under this contract. The Contractor's insurance is subject to the approval of the City's Risk Manager. The certificates must list the City as an ADDITIONAL INSURED for General Liability Insurance and shall have no less than thirty (30) days written notice of cancellation or material change. Further modification of the insurance requirements may be made at the sole discretion of the City's Risk Manager if circumstances change or adequate protection of the City is not presented. Bidder, by submitting the bid, agrees to abide by such modifications.

PART V PURCHASE ORDER AND CONTRACT TERMS:

- 5.01 COMPLIANCE WITH SPECIFICATIONS, LATE DELIVERIES/PENALTIES:** Items offered may be tested for compliance with bid specifications. Items delivered which do not conform to bid specifications may be rejected and returned at Contractor's expense. Any violation resulting in contract termination for cause or delivery of items not conforming to specifications, or late delivery may also result in:

- Bidder's name being removed from the City's bidder's mailing list for a specified period and Bidder will not be recommended for any award during that period.
- All City Departments being advised to refrain from doing business with the Bidder.
- All other remedies in law or equity.

- 5.02 ACCEPTANCE, CONDITION, AND PACKAGING:** The material delivered in response to ITB award shall remain the property of the Seller until a physical inspection is made and the material accepted to the satisfaction of the City. The material must comply fully with the terms of the ITB, be of the required quality, new, and the latest model. All containers shall be suitable for storage and shipment by common carrier, and all prices shall include standard commercial packaging. The City will not accept substitutes of any kind. Any substitutes or material not meeting specifications will be returned at the Bidder's expense. Payment will be made only after City receipt and acceptance of materials or services.

- 5.03 SAFETY STANDARDS:** All manufactured items and fabricated assemblies shall comply with applicable requirements of the Occupation Safety and Health Act of 1970 as amended.

- 5.04 ASBESTOS STATEMENT:** All material supplied must be 100% asbestos free. Bidder, by virtue of bidding, certifies that if awarded any portion of the ITB the bidder will supply only material or equipment that is 100% asbestos free.

- 5.05 OTHER GOVERNMENTAL ENTITIES:** If the Bidder is awarded a contract as a result of this ITB, the bidder may, if the bidder has sufficient capacity or quantities available, provide to other governmental agencies, so requesting, the products or services awarded in accordance with the terms and conditions of the ITB and resulting contract. Prices shall be F.O.B. delivered to the requesting agency.

Page 4

Rev. 8/2022

- 5.06 VERBAL INSTRUCTIONS PROCEDURE:** No negotiations, decisions, or actions shall be initiated or executed by the Contractor as a result of any discussions with any City employee. Only those communications which are in writing from an authorized City representative may be considered. Only written communications from Contractors, which are assigned by a person designated as authorized to bind the Contractor, will be recognized by the City as duly authorized expressions on behalf of Contractors.

- 5.07 INDEPENDENT CONTRACTOR:** The Contractor is an independent contractor under this Agreement. Personal services provided by the Proposer shall be by employees of the Contractor and subject to supervision by the Contractor, and not as officers, employees, or agents of the City. Personnel policies, tax responsibilities, social security, health insurance, employee benefits, procurement policies unless otherwise stated in this ITB, and other similar administrative procedures applicable to services rendered under this contract shall be those of the Contractor.
- 5.08 INDEMNITY/HOLD HARMLESS AGREEMENT:** Contractor shall protect and defend at Contractor's expense, counsel being subject to the City's approval, and indemnify and hold harmless the City and the City's officers, employees, volunteers, and agents from and against any and all losses, penalties, fines, damages, settlements, judgments, claims, costs, charges, expenses, or liabilities, including any award of attorney fees and any award of costs, in connection with or arising directly or indirectly out of any act or omission by the Contractor or by any officer, employee, agent, invitee, subcontractor, or sublicensee of the Contractor. Without limiting the foregoing, any and all such claims, suits, or other actions relating to personal injury, death, damage to property, defects in materials or workmanship, actual or alleged violations of any applicable statute, ordinance, administrative order, rule or regulation, or decree of any court shall be included in the indemnity hereunder.
- 5.09 TERMINATION FOR CAUSE:** If, through any cause, the Contractor shall fail to fulfill in a timely and proper manner its obligations under this Agreement, or if the Contractor shall violate any of the provisions of this Agreement, the City may upon written notice to the Contractor terminate the right of the Contractor to proceed under this Agreement, or with such part or parts of the Agreement as to which there has been default, and may hold the Contractor liable for any damages caused to the City by reason of such default and termination. In the event of such termination, any completed services performed by the Contractor under this Agreement shall, at the option of the City, become the City's property and the Contractor shall be entitled to receive equitable compensation for any work completed to the satisfaction of the City. The Contractor, however, shall not be relieved of liability to the City for damages sustained by the City by reason of any breach of the Agreement by the Contractor, and the City may withhold any payments to the Contractor for the purpose of setoff until such time as the amount of damages due to the City from the Contractor can be determined.
- 5.10 TERMINATION FOR CONVENIENCE:** The City reserves the right, in the City's best interest as determined by the City, to cancel any contract by giving written notice to the Contractor thirty (30) days prior to the effective date of such cancellation.
- 5.11 CANCELLATION FOR UNAPPROPRIATED FUNDS:** The obligation of the City for payment to a Contractor is limited to the availability of funds appropriated in a current fiscal period, and continuation of the contract into a subsequent fiscal period is subject to appropriation of funds, unless otherwise authorized by law.
- 5.12 RECORDS/AUDIT:** The Contractor shall maintain during the term of the contract all books of account, reports and records in accordance with generally accepted accounting practices and standards for records directly related to this contract. The Contractor agrees to make available to the City Auditor or the City Auditor's designee, during normal business hours and in Broward, Miami-Dade or Palm Beach Counties, all books of account, reports, and records relating to this contract. The Contractor shall retain all books of account, reports, and records relating to this contract for the duration of the contract and for three years after the final payment under this Agreement, until all pending audits, investigations or litigation matters relating to the contract are closed, or until expiration of the records retention period prescribed by Florida law or the records retention schedules adopted by the Division of Library and Information Services of the Florida Department of State, whichever is later.
- 5.13 PERMITS, TAXES, LICENSES:** The successful Contractor shall, at his/her/its own expense, obtain all necessary permits, pay all licenses, fees and taxes, required to comply with all local ordinances, state and federal laws, rules and regulations applicable to business to be carried out under this contract.
- 5.14 LAWS/ORDINANCES:** The Contractor shall observe and comply with all Federal, state, local and municipal laws, ordinances rules and regulations that would apply to this contract.
- NON-DISCRIMINATION:** The Contractor shall not, in any of its activities, including employment, discriminate against any individual on the basis of race, color, national origin, age, religion, creed, sex, disability, sexual orientation, gender, gender identity, gender expression, marital status, or any other protected classification as defined by applicable law.
1. The Contractor certifies and represents that the Contractor will comply with Section 2-187, Code of Ordinances of the City of Fort Lauderdale, Florida, (2019), as may be amended or revised, ("Section 2-187"), during the entire term of this Agreement.
 2. The failure of the Contractor to comply with Section 2-187 shall be deemed to be a material breach of this Agreement, entitling the City to pursue any remedy stated below or any remedy provided under applicable law.
 3. The City may terminate this Agreement if the Contractor fails to comply with Section 2-187.
 4. The City may retain all monies due or to become due until the Contractor complies with Section 2-187.
 5. The Contractor may be subject to debarment or suspension proceedings. Such proceedings will be consistent with the procedures in section 2-183 of the Code of Ordinances of the City of Fort Lauderdale, Florida.
- 5.15 UNUSUAL CIRCUMSTANCES:** If during a contract term where costs to the City are to remain firm or adjustments are restricted by a percentage or CPI cap, unusual circumstances that could not have been foreseen by either party of the contract occur, and those circumstances significantly affect the Contractor's cost in providing the required prior items or services, then the Contractor may request adjustments to the costs to the City to

reflect the changed circumstances. The circumstances must be beyond the control of the Contractor, and the requested adjustments must be fully documented. The City may, after examination, refuse to accept the adjusted costs if they are not properly documented, increases are considered to be excessive, or decreases are considered to be insufficient. In the event the City does not wish to accept the adjusted costs and the matter cannot be resolved to the satisfaction of the City, the City will reserve the following options:

1. The contract can be canceled by the City upon giving thirty (30) days written notice to the Contractor with no penalty to the City or Contractor. The Contractor shall fill all City requirements submitted to the Contractor until the termination date contained in the notice.
2. The City requires the Contractor to continue to provide the items and services at the firm fixed (non-adjusted) cost until the termination of the contract term then in effect.
3. If the City, in its interest and in its sole opinion, determines that the Contractor in a capricious manner attempted to use this section of the contract to relieve Contractor of a legitimate obligation under the contract, and no unusual circumstances had occurred, the City reserves the right to take any and all action under law or equity. Such action shall include, but not be limited to, declaring the Contractor in default and disqualifying Contractor from receiving any business from the City for a stated period of time.

If the City does agree to adjusted costs, these adjusted costs shall not be invoiced to the City until the Contractor receives notice in writing signed by a person authorized to bind the City in such matters.

Page 5

Rev. 8/2022

- 5.16 ELIGIBILITY:** If applicable, the Contractor must first register with the Florida Department of State in accordance with Florida Statutes, prior to entering into a contract with the City.
- 5.17 PATENTS AND ROYALTIES:** The Contractor, without exception, shall defend, indemnify, and hold harmless the City and the City's employees, officers, employees, volunteers, and agents from and against liability of any nature and kind, including cost and expenses for or on account of any copyrighted, patented or un-patented invention, process, or article manufactured or used in the performance of the contract, including their use by the City. If the Contractor uses any design, device, or materials covered by letters, patent or copyright, it is mutually agreed and understood without exception that the bid prices shall include any and all royalties or costs arising from the use of such design, device, or materials in any way involved in the work.
- 5.18 ASSIGNMENT:** Contractor shall not transfer or assign the performance required by this ITB without the prior written consent of the City. Any award issued pursuant to this ITB, and the monies, which may become due hereunder, are not assignable except with the prior written approval of the City Commission or the City Manager or City Manager's designee, depending on original award approval.
- 5.19 GOVERNING LAW; VENUE:** The Contract shall be governed by and construed in accordance with the laws of the State of Florida. Venue for any lawsuit by either party against the other party or otherwise arising out of the Contract, and for any other legal proceeding, shall be in the courts in and for Broward County, Florida, or in the event of federal jurisdiction, in the Southern District of Florida.
- 5.20 PUBLIC RECORDS:**

IF THE CONTRACTOR HAS QUESTIONS REGARDING THE APPLICATION OF CHAPTER 119, FLORIDA STATUTES, TO THE CONTRACTOR'S DUTY TO PROVIDE PUBLIC RECORDS RELATING TO THIS CONTRACT, CONTACT THE CUSTODIAN OF PUBLIC RECORDS AT PRRCONTRACT@FORTLAUDERDALE.GOV, 954-828-5002, CITY CLERK'S OFFICE, 100 N. ANDREWS AVENUE, FORT LAUDERDALE, FLORIDA 33301.

Contractor shall comply with public records laws, and Contractor shall:

1. Keep and maintain public records required by the City in order to perform the service.
2. Upon request from the City's custodian of public records, provide the City with a copy of the requested records or allow the records to be inspected or copied within a reasonable time at a cost that does not exceed the cost provided in Chapter 119, Florida Statutes (2021), as may be amended or revised, or as otherwise provided by law.
3. Ensure that public records that are exempt or confidential and exempt from public records disclosure requirements are not disclosed except as authorized by law for the duration of the contract term and following completion of this Agreement if the Contractor does not transfer the

records to the City.


4. Upon completion of the Agreement, transfer, at no cost, to the City all public records in possession of the Contractor or keep and maintain public records required by the City to perform the service. If the Contractor transfers all public records to the City upon completion of this Agreement, the Contractor shall destroy any duplicate public records that are exempt or confidential and exempt from public records disclosure requirements. If the Contractor keeps and maintains public records upon completion of this Agreement, the Contractor shall meet all applicable requirements for retaining public records. All records stored electronically must be provided to the City, upon request from the City's custodian of public records, in a format that is compatible with the information technology systems of the City.

NON-COLLUSION STATEMENT:

By signing this offer, the vendor/contractor certifies that this offer is made independently and free from collusion. Vendor shall disclose below any City of Fort Lauderdale, FL officer or employee, or any relative of any such officer or employee who is an officer or director of, or has a material interest in, the vendor's business, who is in a position to influence this procurement.

Any City of Lauderdale FL officer or in writing of specifications or requirements, solicitation of offers, decision to award, evaluation of offers, or any other activity pertinent to this procurement is presumed, for purposes hereof, to be in a position to influence this procurement.

For purposes hereof, a person has a material interest if they directly or indirectly own more than 5 percent of the total assets or capital stock of any business entity, or if they otherwise stand to personally gain if the contract is awarded to this vendor.

 Text Box: 3.3. City employees may not contract with the City through any corporation or business entity in which they or their immediate family members hold a controlling financial interest (e.g. ownership of five (5) percent or more). 3.4. Immediate family members (spouse, parents and children) are also prohibited from contracting with the City subject to the same general rules.

In accordance with City of Fort Lauderdale, FL Policy and Standards Manual, 6.10.8.3,

Failure of a vendor to disclose any relationship described herein shall be reason for debarment in accordance with the provisions of the City Procurement Code.

Name**Relationships**

In the event the vendor does not indicate any names, the City shall interpret this to mean that the vendor has indicated that no such relationships exist.

Authorized Signature

Title

Name (Printed)

Date

**CONTRACTOR'S CERTIFICATE OF COMPLIANCE WITH
NON-DISCRIMINATION PROVISIONS OF THE CONTRACT**

The completed and signed form should be returned with the Contractor's submittal. If not provided with submittal, the Contractor must submit within three business days of City's request. Contractor may be deemed non-responsive for failure to fully comply within stated timeframes.

Pursuant to the City Ordinance Sec. 2-187(c), bidders must certify compliance with the Non-Discrimination provision of the ordinance.

The Contractor shall not, in any of his/her/its activities, including employment, discriminate against any individual on the basis of race, color, national origin, religion, creed, sex, disability, sexual orientation, gender, gender identity, gender expression, or marital status.

1. The Contractor certifies and represents that he/she/it will comply with Section 2-187, Code of Ordinances of the City of Fort Lauderdale, Florida, as amended by Ordinance C-18-33 (collectively, "Section 2-187").
2. The failure of the Contractor to comply with Section 2-187 shall be deemed to be a material breach of this Agreement, entitling the City to pursue any remedy stated below or any remedy provided under applicable law.
3. The City may terminate this Agreement if the Contractor fails to comply with Section 2-187.
4. The City may retain all monies due or to become due until the Contractor complies with Section 2-187.
5. The Contractor may be subject to debarment or suspension proceedings. Such proceedings will be consistent with the procedures in [section 2-183](#) of the Code of Ordinances of the City of Fort Lauderdale, Florida.

Authorized Signature

Print Name and Title

Date

E-VERIFY AFFIRMATION STATEMENT

RFP/Bid /Contract No:

Project Description: **General engineering aviation consultant services for the Fort Lauderdale Executive Airport Runway 9-27 Runway Pavement Rehabilitation Project located in Broward County, Florida.**

Contractor/Proposer/Bidder acknowledges and agrees to utilize the U.S. Department of Homeland Security's E-Verify System to verify the employment eligibility of,

- (a) all persons employed by Contractor/Proposer/Bidder to perform employment duties within Florida during the term of the Contract, and,
- (b) all persons (including subcontractors/vendors) assigned by Contractor/Proposer/Bidder to perform work pursuant to the Contract.

The Contractor/Proposer/Bidder acknowledges and agrees that use of the U.S. Department of Homeland Security's E-Verify System during the term of the Contract is a condition of the Contract.

Contractor/Proposer/ Bidder Company Name:

Authorized Company Person's Signature:

Authorized Company Person's Title:

Date:

BID/PROPOSAL CERTIFICATION

Please Note: It is the sole responsibility of the bidder to ensure that his bid is submitted electronically through www.BidSync.com prior to the bid opening date and time listed. Paper bid submittals will not be accepted. All fields below must be completed. If the field does not apply to you, please note N/A in that field.

If you are a foreign corporation, you may be required to obtain a certificate of authority from the department of state, in accordance with Florida Statute §607.1501 (visit <http://www.dos.state.fl.us/>).

Company: (Legal Registration) **Michael Baker International, Inc.** EIN (Optional):

Address: **110 East Broward Blvd Ste. 1700**

City: **Fort Lauderdale** State: **FL** Zip: **33301**

Telephone No.: **561-812-6403** FAX No.: **N/A** Email: **mkistler@mbakerintl.com**

Delivery: Calendar days after receipt of Purchase Order (**section 1.02 of General Conditions**):

Total Bid Discount (**section 1.05 of General Conditions**):

Check box if your firm qualifies for MBE / SBE / WBE (**section 1.09 of General Conditions**): ☐

ADDENDUM ACKNOWLEDGEMENT - Proposer acknowledges that the following addenda have been received and are included in the proposal:

<u>Addendum No.</u>	<u>Date Issued</u>	<u>Addendum No.</u>	<u>Date Issued</u>	<u>Addendum No.</u>	<u>Date Issued</u>
1	01/04/23				

VARIANCES: If you take exception or have variances to any term, condition, specification, scope of service, or requirement in this competitive solicitation you must specify such exception or variance in the space provided below or reference in the space provided below all variances contained on other pages within your response. Additional pages may be attached if necessary. No exceptions or variances will be deemed to be part of the response submitted unless such is listed and contained in the space provided below. The City does not, by virtue of submitting a variance, necessarily accept any variances. If no statement is contained in the below space, it is hereby implied that your response is in full compliance with this competitive solicitation. If you do not have variances, simply mark N/A. **You must also click the "Take Exception" button.**

N/A

The below signatory hereby agrees to furnish the following article(s) or services at the price(s) and terms stated subject to all instructions, conditions, specifications addenda, legal advertisement, and conditions contained in the bid/proposal.

I have read all attachments including the specifications and fully understand what is required. By submitting this signed proposal, I will accept a contract if approved by the City and such acceptance covers all terms, conditions, and specifications of this bid/proposal. The below signatory also hereby agrees, by virtue of submitting or attempting to submit a response, that in no event shall the City's liability for respondent's direct, indirect, incidental, consequential, special or exemplary damages, expenses, or lost profits arising out of this competitive solicitation process, including but not limited to public advertisement, bid conferences, site visits, evaluations, oral presentations, or award proceedings exceed the amount of Five Hundred Dollars (\$500.00). This limitation shall not apply to claims arising under any provision of indemnification or the City's protest ordinance contained in this competitive solicitation.

Submitted by:

Mark Kistler
Name (printed)

01/20/23
Date

Mark Kistler
Signature

Regional Aviation Lead
Title

Revised 4/28/2020