



FLORIDA ATLANTIC UNIVERSITY

**Map Alternatives for the City of Fort Lauderdale
City Commission Meetings**

April 19, 2022



Outline

- Data and Direction
- Existing Districts
- Map Alternatives
- Summary
- Timeline

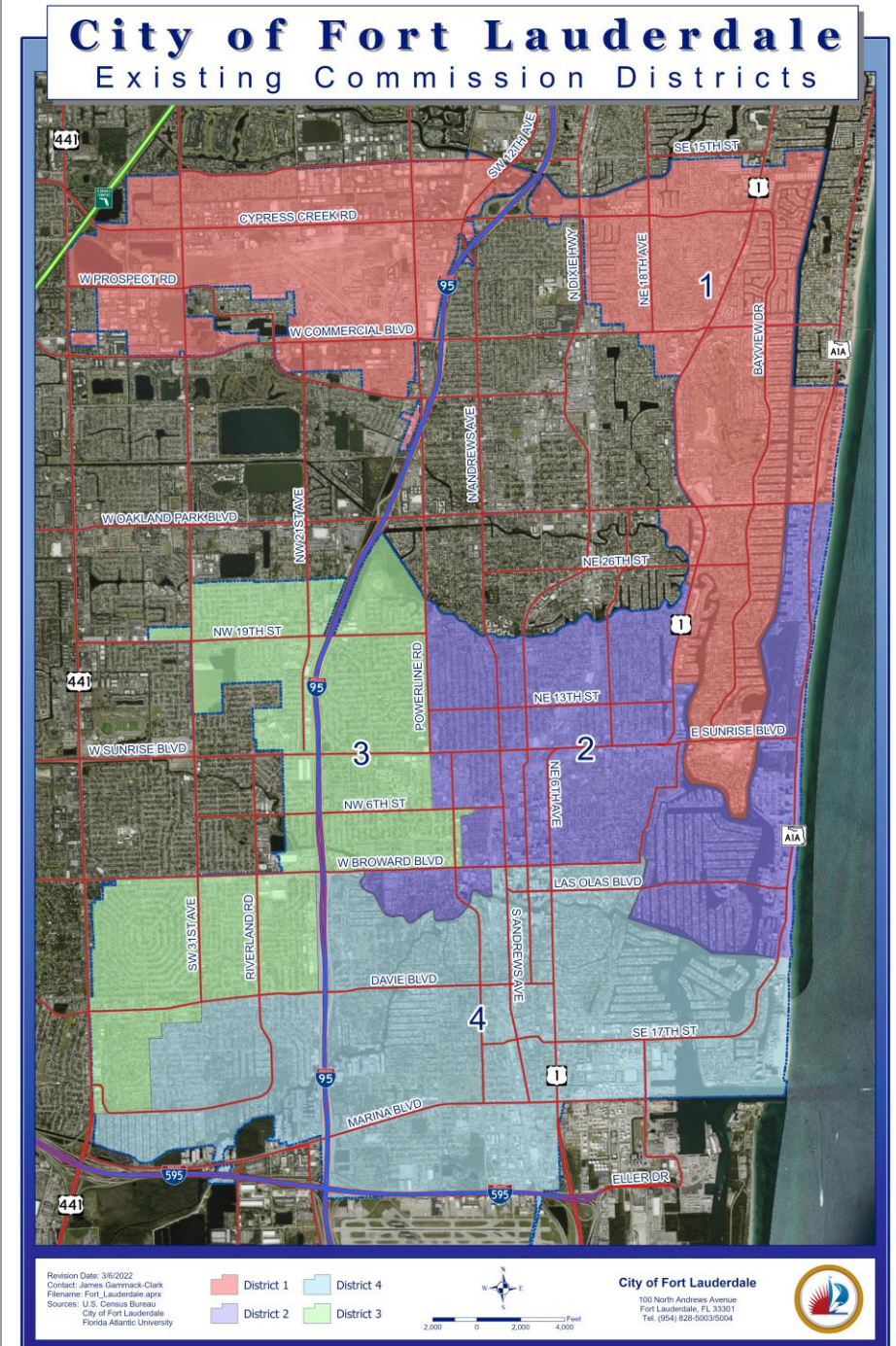


Data and Direction

- U.S. Census Bureau's 2020 Census Redistricting Summary Files [Public Law 94-171]:
 - Resident population counts by census block
 - The smallest enumeration unit possible
 - Aggregated to form each of the four voting districts
- At the April 12, 2022 City Commission meeting, the FAU team was directed to utilize 2020 dataset in lieu of population projections
- Commission requested new map options based on the 2020 data



- 2020 US Census Blocks
 - PL 94-171
 - The population of the City of Fort Lauderdale is **182,760**
 - Average population for each district is **45,690**





2020 Enumeration

- The current Commission Districts are unbalanced
 - Total Deviation of 20.25% between all four districts
 - Spread = 12.99% (7.75% + 5.24% between highest and lowest districts)
 - Districts exceed max. 10% deviation from the ideal size across districts

Current Districts	2020 Population	% of City	Deviation From Average
District 1	42,148	23.06	-7.75% ←
District 2	47,921	26.22	4.88%
District 3	44,605	24.41	-2.37%
District 4	48,086	26.31	5.24% ←
Total	182,760	100	20.25%
Average	45,690	25	5.06%



MAP ALTERNATIVES



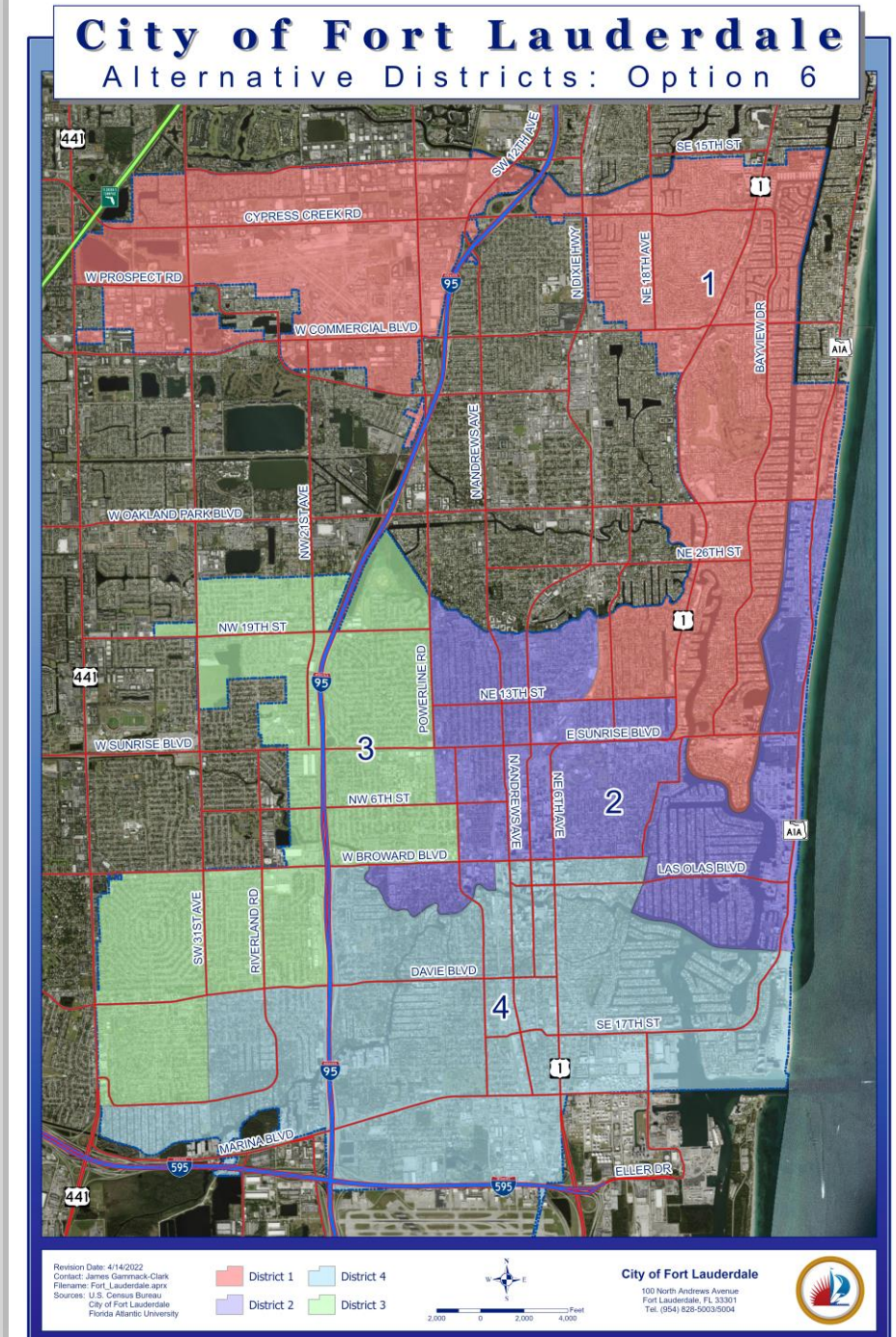
Alternatives

- Four map alternatives have been prepared for consideration:
 - Using 2020 Census data
 - The overall pattern of district boundary changes needed to increase the population of District 1 and decrease the population of District 4
 - Each map alternative impacts each election district
 - All meet standard districting guidelines and the requirements of the City Charter
 - Each map provides an alternate way to improve population equity
 - Maps do not arbitrarily dilute minority populations
 - Consideration for communities, neighborhoods, and public comments



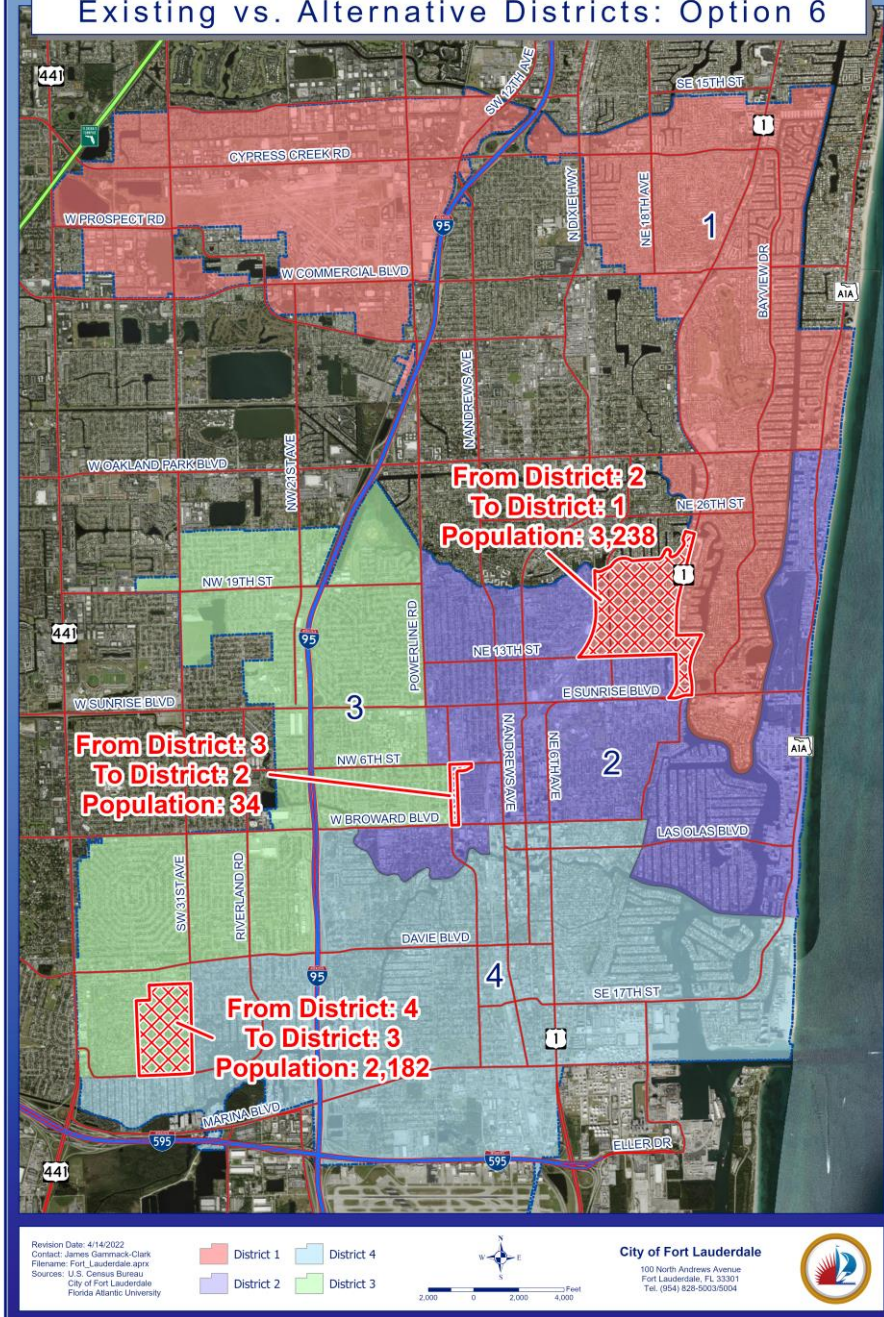
Alternative 6

- The 'Minimalist' option
- Only 3 areas of change are made to the existing District boundaries
- The necessary expansion of District 1 occurs to the west as far as the FEC railway, north of 13th Street
- District 4 contracts in the west



Alternative 6

- District 1 gains:
 - 3,238 people from District 2 north of 13th and east of US 1
 - Poinsettia Heights and part of Lake Ridge east of US 1
 - Galt Mile and Bermuda Riviera are retained by District 1 in this 'minimalist' alternative
- District 2 gains:
 - 34 people from District 3 west of 7th
 - Unifies the Progresso neighborhood
- District 3 gains:
 - 2,182 people from District 4 south of Davie Blvd
 - Riverland Village neighborhood
 - Provides the necessary contraction of District 4





Alternative 6

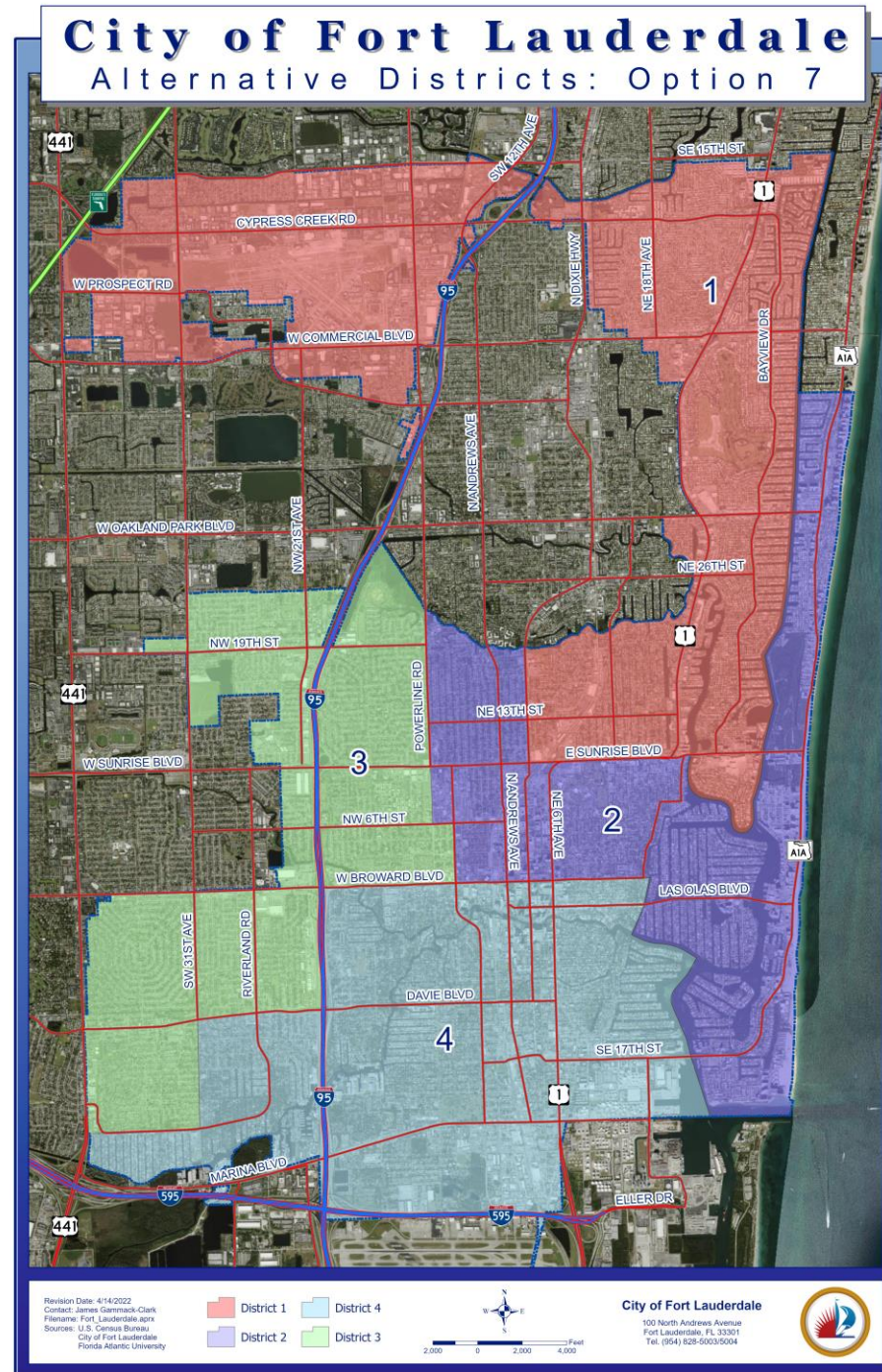
- Deviation is improved under Alternative 6
 - Total Deviation falls from 20.25% to 5.59%, while the Mean Deviation falls from 5.06% to 1.4%
 - The Spread falls from 12.99% to 4.45%

Alternative 6	2020 Population	% of City	Deviation From Average
District 1	45,386	24.83	-0.67%
District 2	44,717	24.47	-2.13%
District 3	46,750	25.58	2.32%
District 4	45,907	25.12	0.47%
Total	182,760	100	5.59%
Average	45,690	25	1.40%



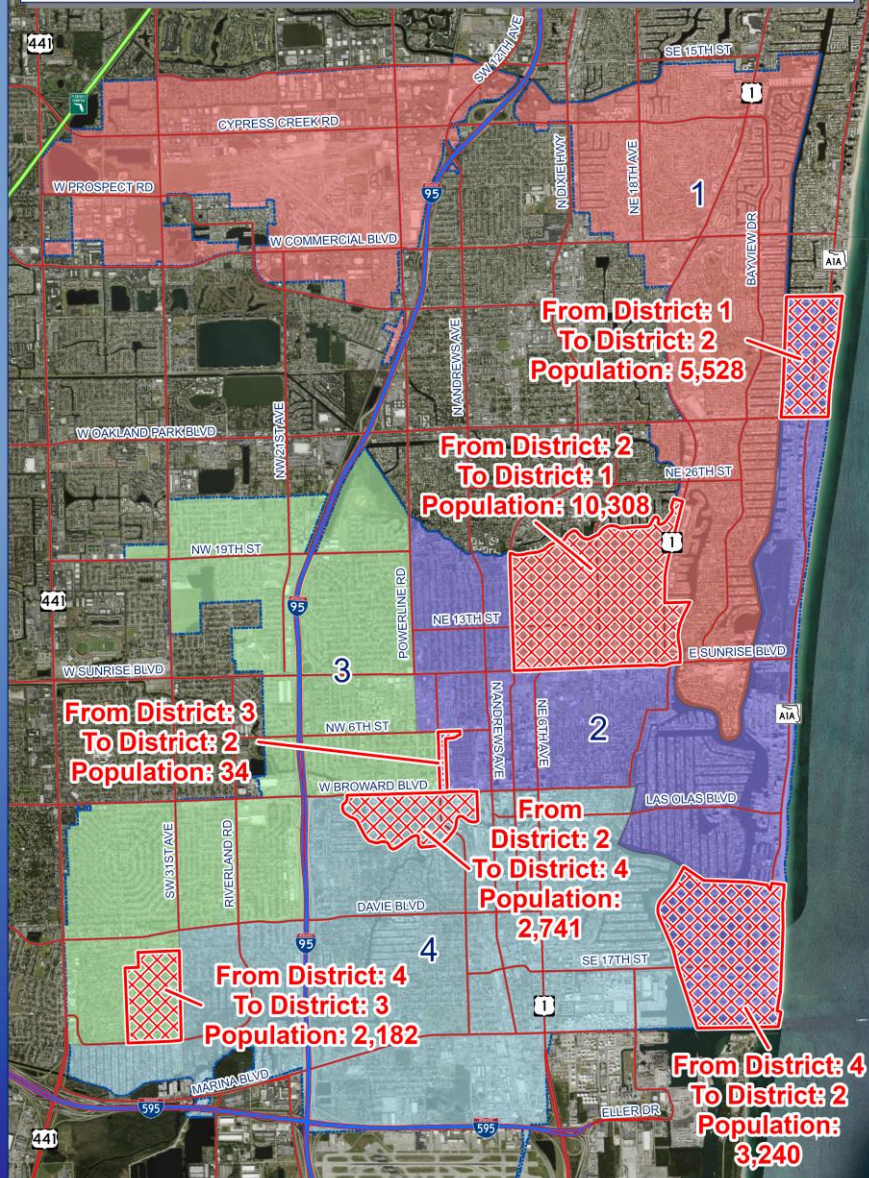
Alternative 7

- District 1 loses the Galt Mile and Bermuda Riviera neighborhoods to District 2
- The necessary expansion of District 1 thus occurs even further west to NE 4th, bordered to the south by Sunrise Blvd
- District 2 contracts in the west while expanding in the south
- District 3 expands south
- District 4 contracts in the east and west, while expanding north



Alternative 7

- District 1 gains:
 - 10,308 people from District 2 north of Sunrise Blvd to 4th (Poinsettia Heights, Lake Ridge, & Middle River Terrace)
- District 2 gains:
 - 5,528 people from District 1 north of Oakland Park and east of the Intracoastal (Galt Mile & Bermuda Riviera)
 - 3,240 people east of the Intracoastal from District 4 (Harbor Beach et al.)
 - 34 people from District 3 west of 7th (unifying Progresso)
- District 3 gains:
 - 2,182 people from District 3 south of Davie Blvd (Riverland)
- District 4 gains:
 - 2,741 people from District 2 north of the New River (Sailboat Bend)





Alternative 7

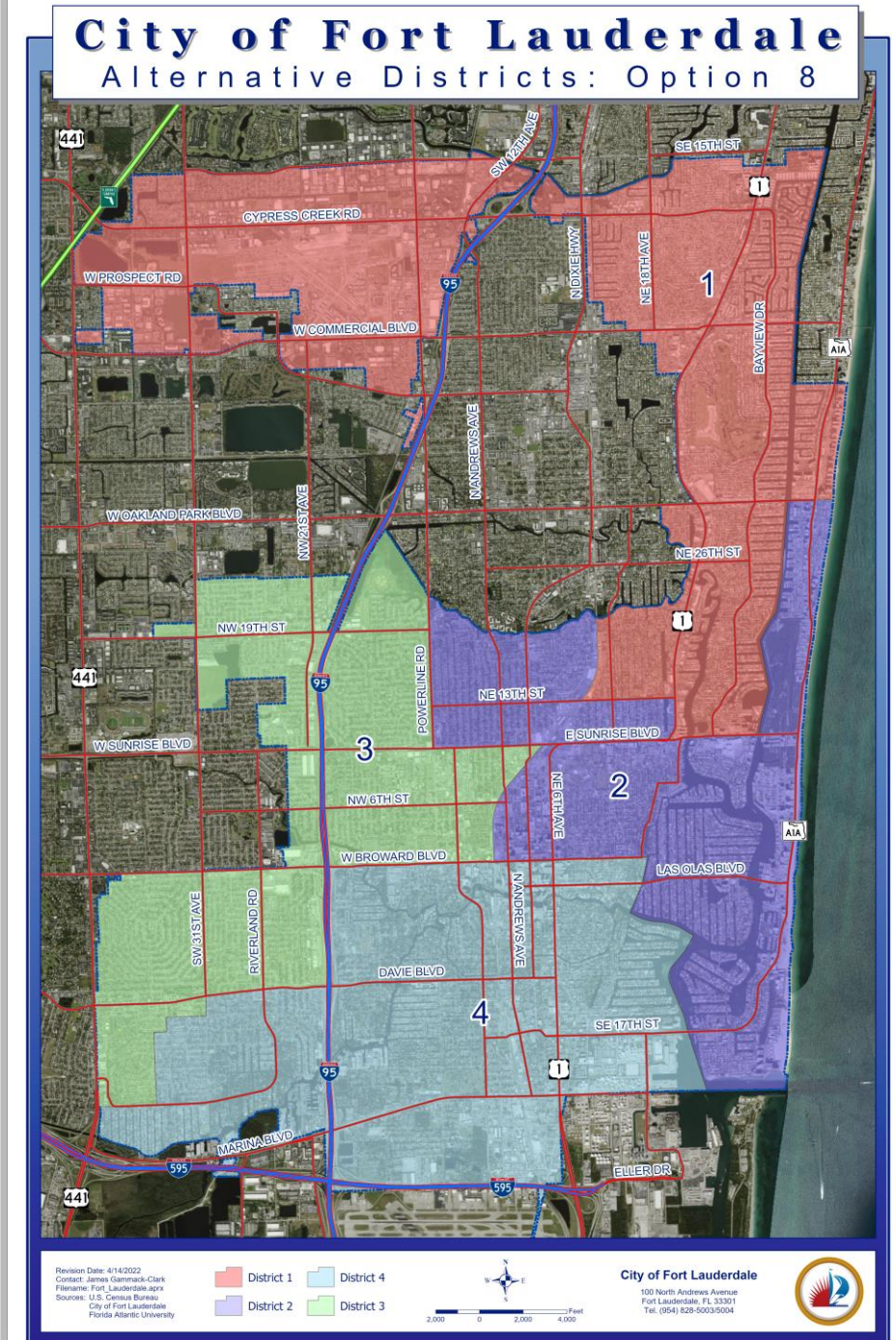
- Deviation is improved under Alternative 7
 - Total Deviation falls from 20.25% to 10.06%, while the Mean Deviation falls from 5.06% to 2.51%
 - The Spread falls from 12.99% to 7.12%

Alternative 7	2020 Population	% of City	Deviation From Average
District 1	46,928	25.68	2.71%
District 2	43,674	23.90	-4.41%
District 3	46,750	25.58	2.32%
District 4	45,408	24.85	-0.62%
Total	182,760	100	10.06%
Average	45,690	25	2.51%



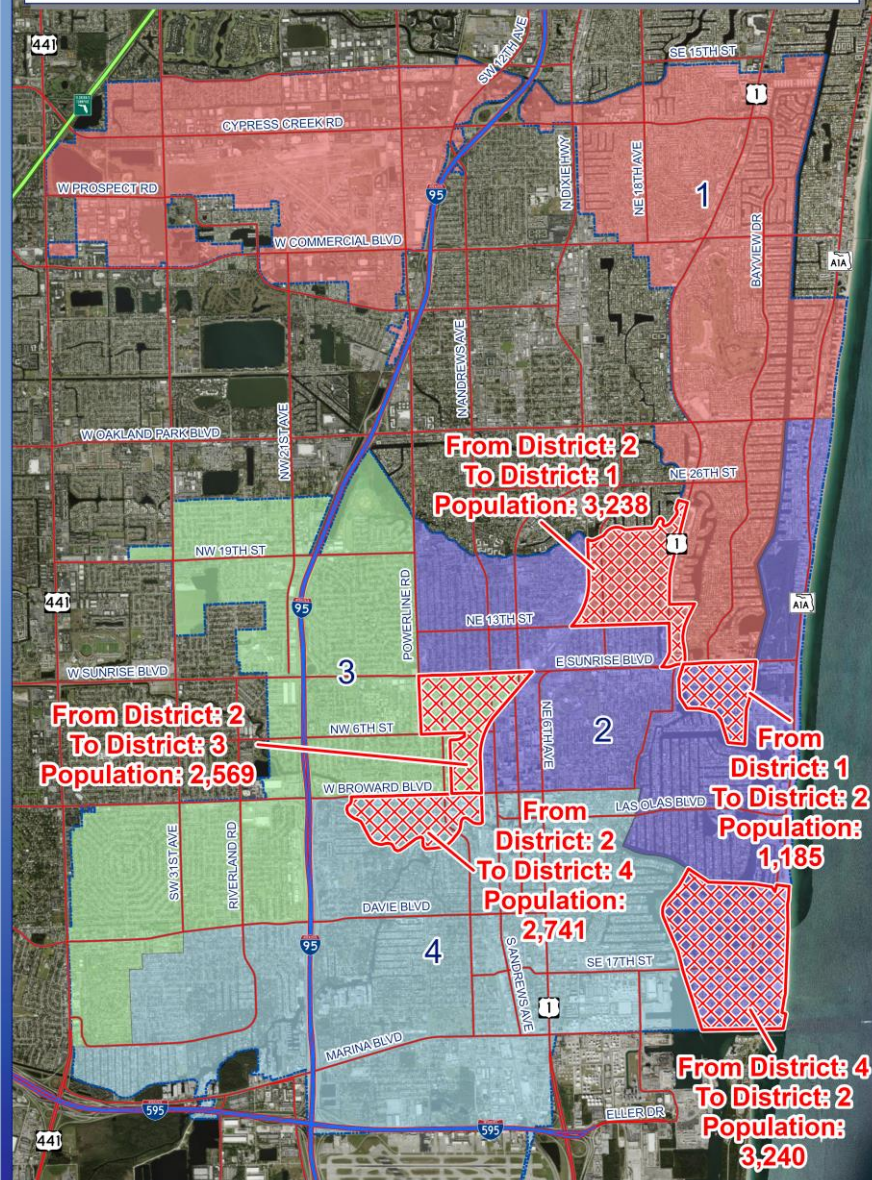
Alternative 8

- Seeks to move the Progresso neighborhood into District 3
- For contiguity reasons, this necessitates that:
 - Sailboat Bend must be moved into District 4
 - Lake Ridge (west of US 1) must remain in District 2
 - Otherwise Middle River and South Middle River would be cutoff
- Galt Mile and Bermuda Riviera remain in District 1



Alternative 8

- District 1 gains:
 - 3,238 people from District 2 north of 13th and east of US 1 (Poinsettia Heights and part of Lake Ridge east of US 1)
- District 2 gains:
 - 1,185 people from District 1 south of Sunrise (Galleria Mall and Sunrise Intracoastal)
 - 3,240 people from District 4 east of the Intracoastal (Harbor Beach et al.)
- District 3 gains:
 - 2,569 people from District 2 west of the FEC railway (Progresso)
- District 4 gains:
 - 2,741 people from District 2 north of the New River (Sailboat Bend)





Alternative 8

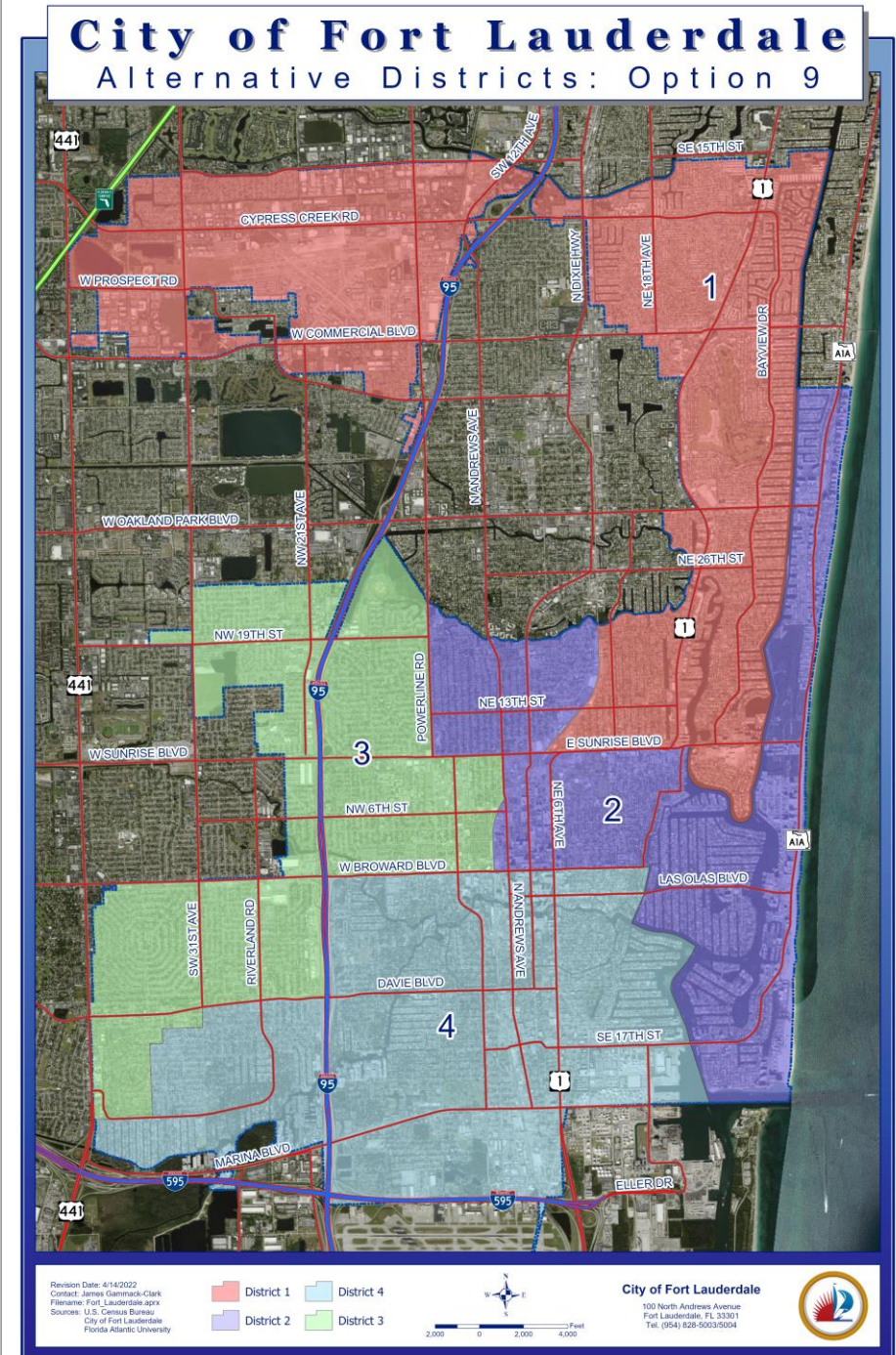
- Deviation is improved under Alternative 8
 - Total Deviation falls from 20.25% to 14.80%, while the Mean Deviation falls from 5.06% to 3.70%
 - The Spread falls from 12.99% to 8.30%

Alternative 8	2020 Population	% of City	Deviation From Average
District 1	44,201	24.19	-3.26%
District 2	43,798	23.96	-4.14%
District 3	47,171	25.81	3.24%
District 4	47,590	26.04	4.16%
Total	182,760	100	14.80%
Average	45,690	25	3.70%



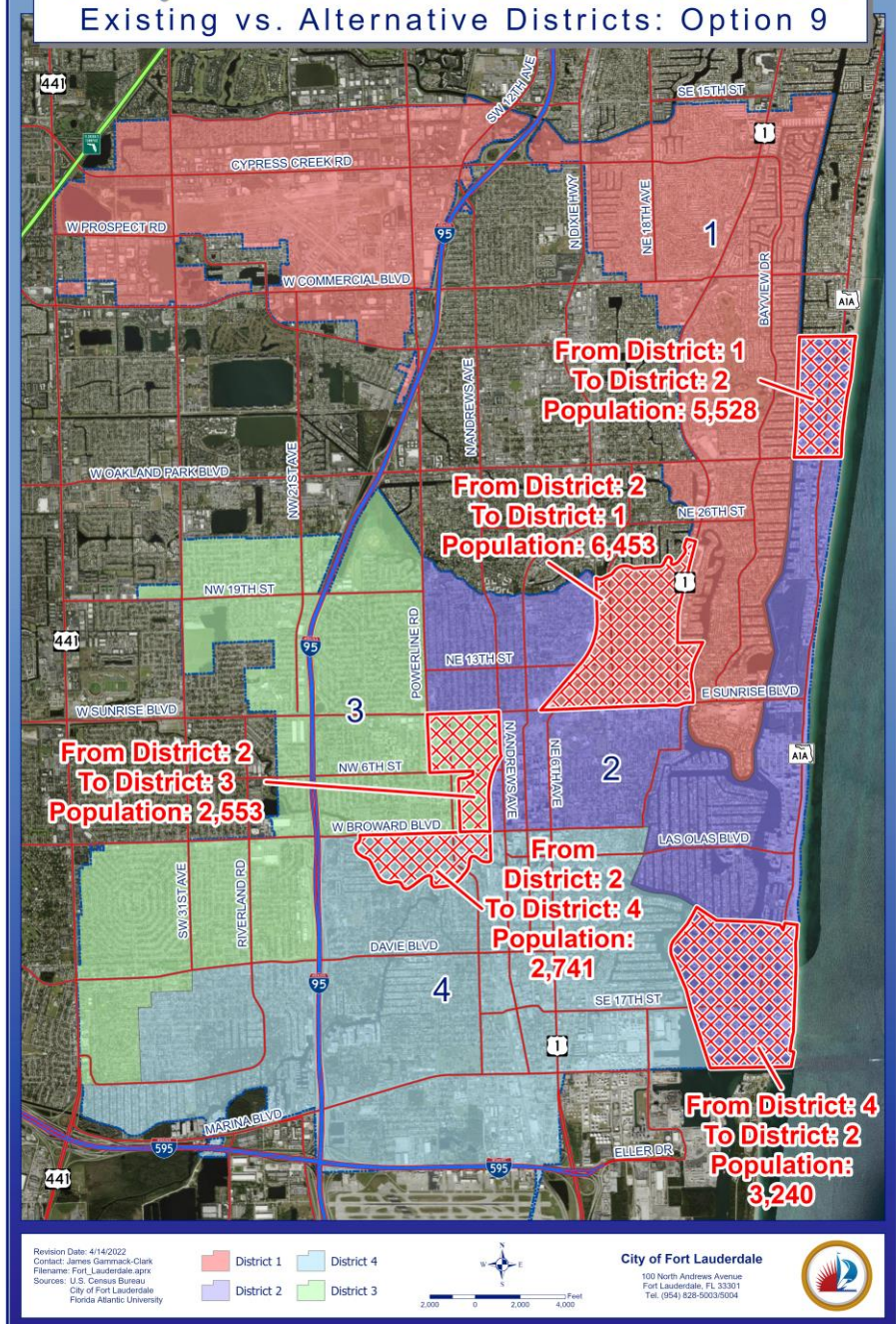
Alternative 9

- Attempts to both move Progresso into District 3 and Galt Mile/Bermuda Riviera into District 2
- District 1 must expand further west to the FEC railway, north of Sunrise Blvd
 - Thus, the non-residential portion of Progresso remains in District 2
- District 2 must also expand to the south, east of the Intracoastal waterway



Alternative 9



- District 1 gains:
 - 6,453 people from District 2 north of Sunrise Blvd and west of US 1 to the FEC railway (Poinsettia Heights, & Lake Ridge)
- District 2 gains:
 - 5,528 people from District 1 north of Oakland Park Blvd east of the Intracoastal (Galt Mile & Bermuda Riviera)
 - 3,240 people from District 4 east of the Intracoastal (Harbor Beach et al.)
- District 3 gains:
 - 2,553 people from District 2 south of Sunrise Blvd (residential portion of Progresso)
- District 4 gains:
 - 2,741 people from District 2 north of the New River (Sailboat Bend)





Alternative 9

- Deviation is improved under Alternative 9
 - Total Deviation falls from 20.25% to 14.73%, while the Mean Deviation falls from 5.06% to 3.68%
 - The Spread falls from 12.99% to 9.89%

Alternative 9	2020 Population	% of City	Deviation From Average
District 1	43,073	23.57	-5.73% 
District 2	44,942	24.59	-1.64%
District 3	47,155	25.80	3.21%
District 4	47,590	26.04	4.16% 
Total	182,760	100	14.73%
Average	45,690	25	3.68%



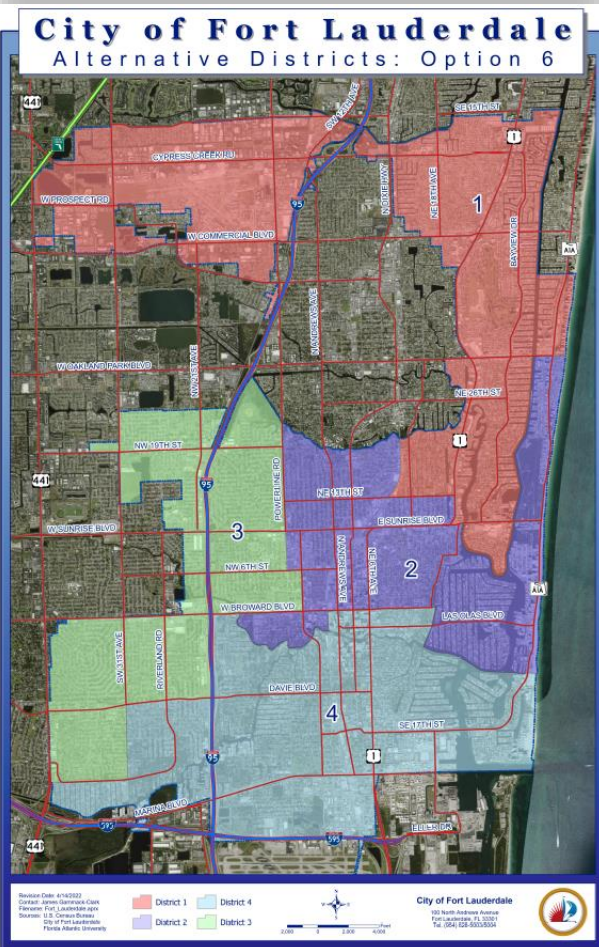
Summary – 4 Map Alternatives (2020 Census)

Configuration	Impacted Population	Total Deviation	Mean Deviation	Spread	Split Neighborhoods	
Existing	N/A	20.25	5.06	12.99	1	Progresso Village
Alternative 6	5,454	5.59	1.40	4.45	1	Lake Ridge (E/W of US1)
Alternative 7	24,033	10.06	2.51	7.12	0	N/A
Alternative 8	12,973	14.80	3.70	8.30	1	Lake Ridge (E/W of US1)
Alternative 9	20,515	14.73	3.68	9.89	0*	N/A

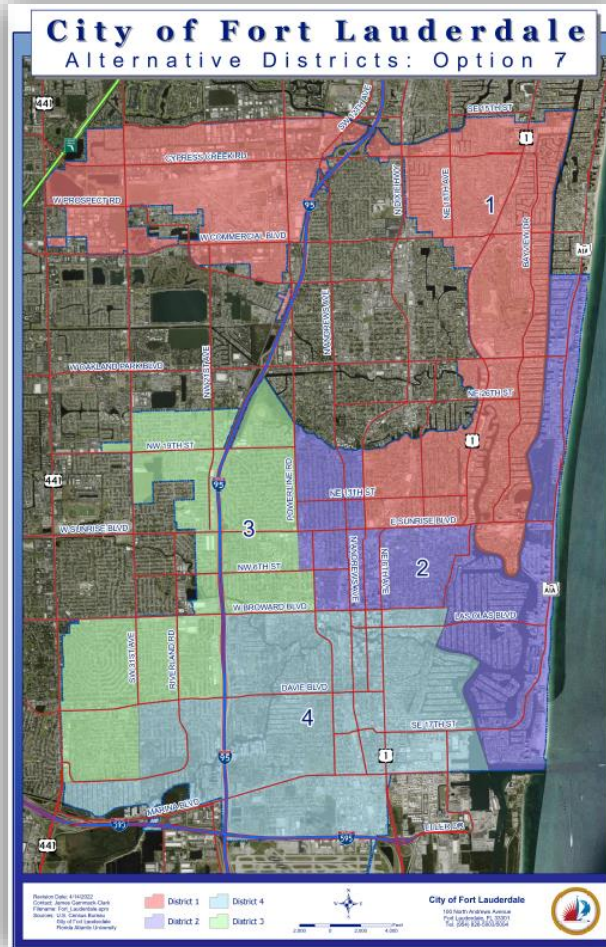
* A split in the Progresso Village neighborhood is excluded from the tally as the residential portion remains intact.



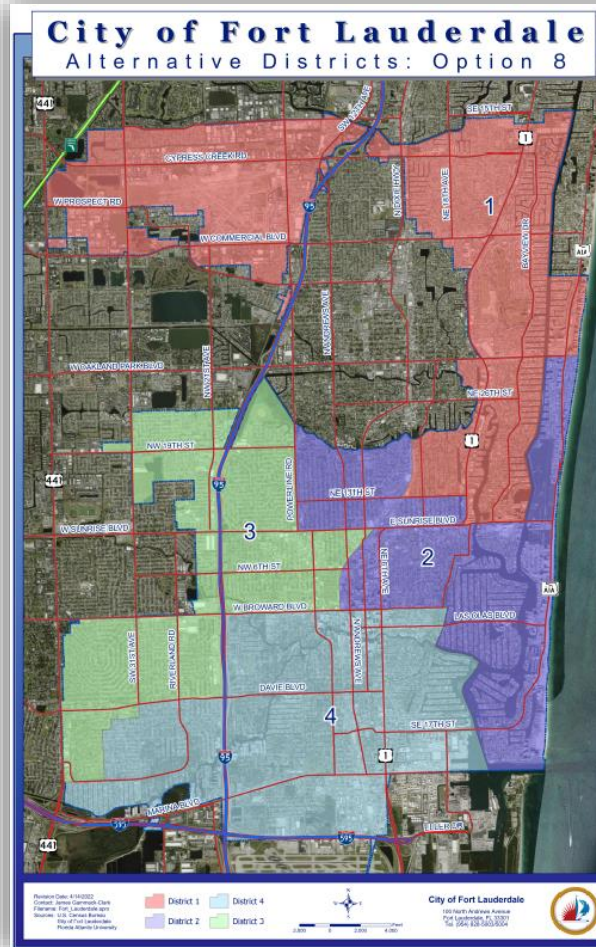
Summary – 4 Map Alternatives – 2020 Dataset



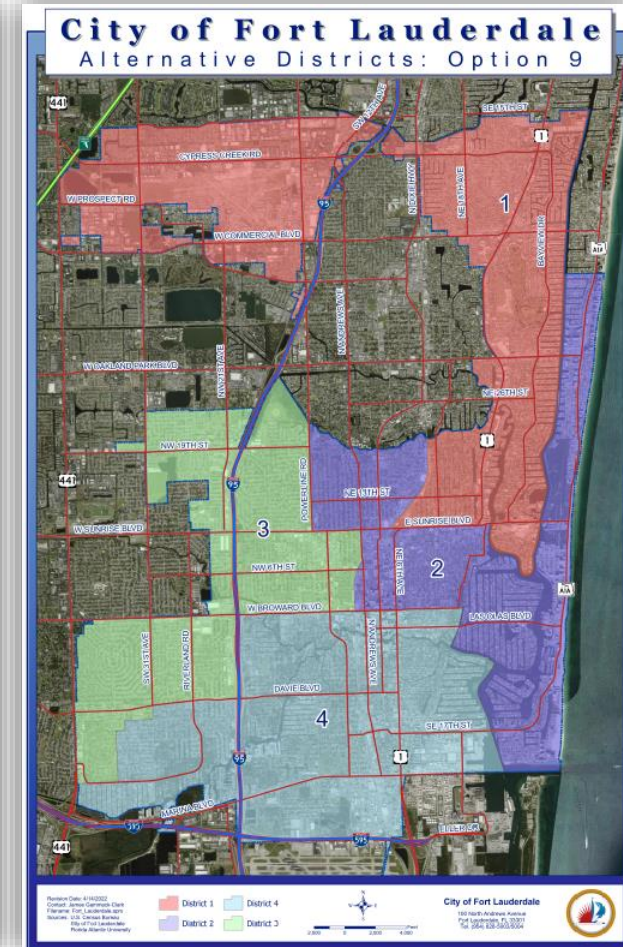
Alt. 6



Alt. 7



Alt. 8



Alt. 9



Timeline

- March 7, 2022 - District Analysis Submitted
- March 15, 2022 - Commission Meeting
- March 17, 2022 – Public Outreach Meeting
- March 21, 2022 - Redistricting Alternatives Report Submitted
- March 22 to April 5 - Public Comments
- April 5, 2022 – Commission Meeting and 1st Reading deferred
- April 12, 2022 – Special Commission meeting
 - City Commission directed FAU team to use 2020 dataset and submit new map alternatives
- April 15, 2022 - Redistricting Alternatives Report Amendment 2 Submitted
- April 19, 2022 - Commission Meeting and 1st Reading
- April/May TBD - Commission Meeting and 2nd Reading/Adoption
- Submit new Election District Map to Supervisor of Elections



FLORIDA ATLANTIC UNIVERSITY

Questions?

Map Alternatives for the City of Fort Lauderdale

April 19, 2022