



KAP architecture, inc.  
3681 S.W. 161st TERRACE  
MIRAMAR, FL 33027  
PH. 305.753.9653  
a.kurt@kaparch.net

PROJECT CLASSIC, LLC  
7318 TEXAS TRAIL  
BOCA RATON, FL 33487  
PH. 954.667.7803  
e. fawc@projectclassic.com

BOTEK THURLOW ENGINEERING, INC.  
3406 NW 9th AVENUE  
SUITE 1102  
FORT LAUDERDALE, FL 33309  
PH. 954.568.0888  
e. [sfb@botechthurlow-eng.com](mailto:sfb@botechthurlow-eng.com)

LANDSCAPE ARCHITECT CONSULTANTS, INC.  
5215 WEST BROWARD BOULEVARD  
PLANTATION, FL 33317  
PH. 954.581.1110  
e. tom@lactl.com

MARTIN - VILATO ASSOCIATES  
CONSULTING ENGINEERS  
2730 S.W. 3rd AVENUE  
SUITE 402  
MIAMI, FLORIDA 33129  
PH. 305.854.6977

**KAP**  
arch

800 370 3730 Toronto 416 593-7100  
416 593-7100 Fax 416 593-7101  
e: kap@kaparch.com  
www.kaparch.com

© 2001 Kaparch Inc. All Rights Reserved  
01-00000

# THE WRIGHT DYNASTY

1217 - 1223 N.W. 6th STREET , FORT LAUDERDALE, FLORIDA 33311 - 0000

PROJECT No. 2019-09\_SISTRUNK WRIGHT • DRC SUBMITTAL SET • 02.01.21

● 地址：北京市海淀区中关村大街10号  
● 邮编：100081  
● 电话：010-62561111  
● 传真：010-62561111  
● 网址：<http://www.10000.com.cn>

REPRINTED FROM THE JOURNAL OF THE AMERICAN MEDICAL ASSOCIATION  
Copyright © 1994 by American Medical Association

WRIGHT  
DYNASTY

1215-1225 N.W. 6TH STREET  
PORTLAND, ORE. 97208



© 2000 Blackwell Science Ltd

...the ...






1990	1991	1992	1993	1994	1995	1996	1997	1998	1999	2000	2001	2002	2003	2004	2005	2006	2007	2008	2009	2010	2011	2012	2013	2014	2015	2016	2017	2018	2019	2020	2021	2022	2023	2024	2025	2026	2027	2028	2029	2030	2031	2032	2033	2034	2035	2036	2037	2038	2039	2040	2041	2042	2043	2044	2045	2046	2047	2048	2049	2050	2051	2052	2053	2054	2055	2056	2057	2058	2059	2060	2061	2062	2063	2064	2065	2066	2067	2068	2069	2070	2071	2072	2073	2074	2075	2076	2077	2078	2079	2080	2081	2082	2083	2084	2085	2086	2087	2088	2089	2090	2091	2092	2093	2094	2095	2096	2097	2098	2099	2100	2101	2102	2103	2104	2105	2106	2107	2108	2109	2110	2111	2112	2113	2114	2115	2116	2117	2118	2119	2120	2121	2122	2123	2124	2125	2126	2127	2128	2129	2130	2131	2132	2133	2134	2135	2136	2137	2138	2139	2140	2141	2142	2143	2144	2145	2146	2147	2148	2149	2150	2151	2152	2153	2154	2155	2156	2157	2158	2159	2160	2161	2162	2163	2164	2165	2166	2167	2168	2169	2170	2171	2172	2173	2174	2175	2176	2177	2178	2179	2180	2181	2182	2183	2184	2185	2186	2187	2188	2189	2190	2191	2192	2193	2194	2195	2196	2197	2198	2199	2200	2201	2202	2203	2204	2205	2206	2207	2208	2209	2210	2211	2212	2213	2214	2215	2216	2217	2218	2219	2220	2221	2222	2223	2224	2225	2226	2227	2228	2229	2230	2231	2232	2233	2234	2235	2236	2237	2238	2239	2240	2241	2242	2243	2244	2245	2246	2247	2248	2249	2250	2251	2252	2253	2254	2255	2256	2257	2258	2259	2260	2261	2262	2263	2264	2265	2266	2267	2268	2269	2270	2271	2272	2273	2274	2275	2276	2277	2278	2279	2280	2281	2282	2283	2284	2285	2286	2287	2288	2289	2290	2291	2292	2293	2294	2295	2296	2297	2298	2299	2300	2301	2302	2303	2304	2305	2306	2307	2308	2309	2310	2311	2312	2313	2314	2315	2316	2317	2318	2319	2320	2321	2322	2323	2324	2325	2326	2327	2328	2329	2330	2331	2332	2333	2334	2335	2336	2337	2338	2339	2340	2341	2342	2343	2344	2345	2346	2347	2348	2349	2350	2351	2352	2353	2354	2355	2356	2357	2358	2359	2360	2361	2362	2363	2364	2365	2366	2367	2368	2369	2370	2371	2372	2373	2374	2375	2376	2377	2378	2379	2380	2381	2382	2383	2384	2385	2386	2387	2388	2389	2390	2391	2392	2393	2394	2395	2396	2397	2398</
------	------	------	------	------	------	------	------	------	------	------	------	------	------	------	------	------	------	------	------	------	------	------	------	------	------	------	------	------	------	------	------	------	------	------	------	------	------	------	------	------	------	------	------	------	------	------	------	------	------	------	------	------	------	------	------	------	------	------	------	------	------	------	------	------	------	------	------	------	------	------	------	------	------	------	------	------	------	------	------	------	------	------	------	------	------	------	------	------	------	------	------	------	------	------	------	------	------	------	------	------	------	------	------	------	------	------	------	------	------	------	------	------	------	------	------	------	------	------	------	------	------	------	------	------	------	------	------	------	------	------	------	------	------	------	------	------	------	------	------	------	------	------	------	------	------	------	------	------	------	------	------	------	------	------	------	------	------	------	------	------	------	------	------	------	------	------	------	------	------	------	------	------	------	------	------	------	------	------	------	------	------	------	------	------	------	------	------	------	------	------	------	------	------	------	------	------	------	------	------	------	------	------	------	------	------	------	------	------	------	------	------	------	------	------	------	------	------	------	------	------	------	------	------	------	------	------	------	------	------	------	------	------	------	------	------	------	------	------	------	------	------	------	------	------	------	------	------	------	------	------	------	------	------	------	------	------	------	------	------	------	------	------	------	------	------	------	------	------	------	------	------	------	------	------	------	------	------	------	------	------	------	------	------	------	------	------	------	------	------	------	------	------	------	------	------	------	------	------	------	------	------	------	------	------	------	------	------	------	------	------	------	------	------	------	------	------	------	------	------	------	------	------	------	------	------	------	------	------	------	------	------	------	------	------	------	------	------	------	------	------	------	------	------	------	------	------	------	------	------	------	------	------	------	------	------	------	------	------	------	------	------	------	------	------	------	------	------	------	------	------	------	------	------	------	------	------	------	------	------	------	------	------	------	------	------	------	------	------	------	------	------	------	------	------	------	------	------	------	------	------	------	------	------	------	------	------	------	--------

Over 100!

2016年12月31日

DATE	10/17/11
TIME	1:00 PM

A-000  
 (over 120)  
 500

1997, 1998, 1999, 2000, 2001, 2002, 2003, 2004, 2005, 2006, 2007, 2008, 2009, 2010, 2011, 2012, 2013, 2014, 2015, 2016, 2017, 2018, 2019, 2020, 2021, 2022, 2023, 2024, 2025, 2026, 2027, 2028, 2029, 2030, 2031, 2032, 2033, 2034, 2035, 2036, 2037, 2038, 2039, 2040, 2041, 2042, 2043, 2044, 2045, 2046, 2047, 2048, 2049, 2050, 2051, 2052, 2053, 2054, 2055, 2056, 2057, 2058, 2059, 2060, 2061, 2062, 2063, 2064, 2065, 2066, 2067, 2068, 2069, 2070, 2071, 2072, 2073, 2074, 2075, 2076, 2077, 2078, 2079, 2080, 2081, 2082, 2083, 2084, 2085, 2086, 2087, 2088, 2089, 2090, 2091, 2092, 2093, 2094, 2095, 2096, 2097, 2098, 2099, 2100, 2101, 2102, 2103, 2104, 2105, 2106, 2107, 2108, 2109, 2110, 2111, 2112, 2113, 2114, 2115, 2116, 2117, 2118, 2119, 2120, 2121, 2122, 2123, 2124, 2125, 2126, 2127, 2128, 2129, 2130, 2131, 2132, 2133, 2134, 2135, 2136, 2137, 2138, 2139, 2140, 2141, 2142, 2143, 2144, 2145, 2146, 2147, 2148, 2149, 2150, 2151, 2152, 2153, 2154, 2155, 2156, 2157, 2158, 2159, 2160, 2161, 2162, 2163, 2164, 2165, 2166, 2167, 2168, 2169, 2170, 2171, 2172, 2173, 2174, 2175, 2176, 2177, 2178, 2179, 2180, 2181, 2182, 2183, 2184, 2185, 2186, 2187, 2188, 2189, 2190, 2191, 2192, 2193, 2194, 2195, 2196, 2197, 2198, 2199, 2200, 2201, 2202, 2203, 2204, 2205, 2206, 2207, 2208, 2209, 2210, 2211, 2212, 2213, 2214, 2215, 2216, 2217, 2218, 2219, 2220, 2221, 2222, 2223, 2224, 2225, 2226, 2227, 2228, 2229, 2230, 2231, 2232, 2233, 2234, 2235, 2236, 2237, 2238, 2239, 2240, 2241, 2242, 2243, 2244, 2245, 2246, 2247, 2248, 2249, 2250, 2251, 2252, 2253, 2254, 2255, 2256, 2257, 2258, 2259, 2260, 2261, 2262, 2263, 2264, 2265, 2266, 2267, 2268, 2269, 2270, 2271, 2272, 2273, 2274, 2275, 2276, 2277, 2278, 2279, 2280, 2281, 2282, 2283, 2284, 2285, 2286, 2287, 2288, 2289, 2290, 2291, 2292, 2293, 2294, 2295, 2296, 2297, 2298, 2299, 2300, 2301, 2302, 2303, 2304, 2305, 2306, 2307, 2308, 2309, 2310, 2311, 2312, 2313, 2314, 2315, 2316, 2317, 2318, 2319, 2320, 2321, 2322, 2323, 2324, 2325, 2326, 2327, 2328, 2329, 2330, 2331, 2332, 2333, 2334, 2335, 2336, 2337, 2338, 2339, 2340, 2341, 2342, 2343, 2344, 2345, 2346, 2347, 2348, 2349, 2350, 2351, 2352, 2353, 2354, 2355, 2356, 2357, 2358, 2359, 2360, 2361, 2362, 2363, 2364, 2365, 2366, 2367, 2368, 2369, 2370, 2371, 2372, 2373, 2374, 2375, 2376, 2377, 2378, 2379, 2380, 2381, 2382, 2383, 2384, 2385, 2386, 2387, 2388, 2389, 2390, 2391, 2392, 2393, 2394, 2395, 2396, 2397, 2398, 2399, 2400, 2401, 2402, 2403, 2404, 2405, 2406, 2407, 2408, 2409, 2410, 2411, 2412, 2413, 2414, 2415, 2416, 2417, 2418, 2419, 2420, 2421, 2422, 2423, 2424, 2425, 2426, 2427, 2428, 2429, 2430, 2431, 2432, 2433, 2434, 2435, 2436, 2437, 2438, 2439, 2440, 2441, 2442, 2443, 2444, 2445, 2446, 2447, 2448, 2449, 2450, 2451, 2452, 2453, 2454, 2455, 2456, 2457, 2458, 2459, 2460, 2461, 2462, 2463, 2464, 2465, 2466, 2467, 2468, 2469, 2470, 2471, 2472, 2473, 2474, 2475, 2476, 2477, 2478, 2479, 2480, 2481, 2482, 2483, 2484, 2485, 2486, 2487, 2488, 2489, 2490, 2491, 2492, 2493, 2494, 2495, 2496, 2497, 2498, 2499, 2500, 2501, 2502, 2503, 2504, 2505, 2506, 2507, 2508, 2509, 2510, 2511, 2512, 2513, 2514, 2515, 2516, 2517, 2518, 2519, 2520, 2521, 2522, 2523, 2524, 2525, 2526, 2527, 2528, 2529, 2530, 2531, 2532, 2533, 2534, 2535, 2536, 2537, 2538, 2539, 2540, 2541, 2542, 2543, 2544, 2545, 2546, 2547, 2548, 2549, 2550, 2551, 2552, 2553, 2554, 2555, 2556, 2557, 2558, 2559, 2560, 2561, 2562, 2563, 2564, 2565, 2566, 2567, 2568, 2569, 2570, 2571, 2572, 2573, 2574, 2575, 2576, 2577, 2578, 2579, 2580, 2581, 2582, 2583, 2584, 2585, 2586, 2587, 2588, 2589, 2590, 2591, 2592, 2593, 2594, 2595, 2596, 2597, 2598, 2599, 2600, 2601, 2602, 2603, 2604, 2605, 2606, 2607, 2608, 2609, 2610, 2611, 2612, 2613, 2614, 2615, 2616, 2617, 2618, 2619, 2620, 2621, 2622, 2623, 2624, 2625, 2626, 2627, 2628, 2629, 2630, 2631, 2632, 2633, 2634, 2635, 2636, 2637, 2638, 2639, 2640, 2641, 2642, 2643, 2644, 2645, 2646, 2647, 2648, 2649, 2650, 2651, 2652, 2653, 2654, 2655, 2656, 2657, 2658, 2659, 2660, 2661, 2662, 2663, 2664, 2665, 2666, 2667, 2668, 2669, 2670, 2671, 2672, 2673, 2674, 2675, 2676, 2677, 2678, 26



PROJECT PERSPECTIVE FACING NORTH FROM SEBRING BOULEVARD



PROJECT PERSPECTIVE FACING NORTH FROM SEBRING BOULEVARD AT NIGHTTIME

**KAP arch**  
 3010 N.W. 10th Street, Suite 100  
 Fort Lauderdale, FL 33304  
 (954) 561-1000  
 www.kaparch.com

**WRIGHT DYNASTY**  
 120120 N.W. 10th Street  
 Fort Lauderdale, FL 33304  
 (954) 561-1000  
 www.wrightdynasty.com

**STATE OF FLORIDA**  
 DEPARTMENT OF REVENUE  
 OFFICE OF THE COMPTROLLER  
 1000 N.W. 10th Street  
 Fort Lauderdale, FL 33304  
 (954) 561-1000  
 www.floridarevenue.com

**PROJECT INFORMATION**

PROJECT NAME	WRIGHT DYNASTY
PROJECT ADDRESS	120120 N.W. 10th Street
PROJECT CITY	Fort Lauderdale, FL
PROJECT COUNTY	Dade County
PROJECT ZONE	UD-1
PROJECT SUBMIT DATE	08/10/20
PROJECT SUBMIT TIME	10:00 AM
PROJECT SUBMIT BY	KAP ARCH
PROJECT SUBMIT FOR	WRIGHT DYNASTY
PROJECT SUBMIT TO	STATE OF FLORIDA
PROJECT SUBMIT BY	KAP ARCH
PROJECT SUBMIT FOR	WRIGHT DYNASTY
PROJECT SUBMIT TO	STATE OF FLORIDA

**PROJECT INFORMATION**

PROJECT NAME: WRIGHT DYNASTY  
 PROJECT ADDRESS: 120120 N.W. 10th Street  
 PROJECT CITY: Fort Lauderdale, FL  
 PROJECT COUNTY: Dade County  
 PROJECT ZONE: UD-1  
 PROJECT SUBMIT DATE: 08/10/20  
 PROJECT SUBMIT TIME: 10:00 AM  
 PROJECT SUBMIT BY: KAP ARCH  
 PROJECT SUBMIT FOR: WRIGHT DYNASTY  
 PROJECT SUBMIT TO: STATE OF FLORIDA

**PROJECT INFORMATION**

PROJECT NAME: WRIGHT DYNASTY  
 PROJECT ADDRESS: 120120 N.W. 10th Street  
 PROJECT CITY: Fort Lauderdale, FL  
 PROJECT COUNTY: Dade County  
 PROJECT ZONE: UD-1  
 PROJECT SUBMIT DATE: 08/10/20  
 PROJECT SUBMIT TIME: 10:00 AM  
 PROJECT SUBMIT BY: KAP ARCH  
 PROJECT SUBMIT FOR: WRIGHT DYNASTY  
 PROJECT SUBMIT TO: STATE OF FLORIDA

**PROJECT INFORMATION**

PROJECT NAME: WRIGHT DYNASTY  
 PROJECT ADDRESS: 120120 N.W. 10th Street  
 PROJECT CITY: Fort Lauderdale, FL  
 PROJECT COUNTY: Dade County  
 PROJECT ZONE: UD-1  
 PROJECT SUBMIT DATE: 08/10/20  
 PROJECT SUBMIT TIME: 10:00 AM  
 PROJECT SUBMIT BY: KAP ARCH  
 PROJECT SUBMIT FOR: WRIGHT DYNASTY  
 PROJECT SUBMIT TO: STATE OF FLORIDA



PROJECT PERSPECTIVE FACING SOUTH / SOUTHWEST FROM REAR



PROJECT PERSPECTIVE FACING SOUTH / SOUTHWEST FROM REAR



PROJECT PERSPECTIVE FACING SOUTH / SOUTHWEST FROM REAR AT NIGHTTIME



PROJECT PERSPECTIVE FACING EAST FROM SETRUNK BOULEVARD

**KAP arch**  
 300 N. W. 1st Street, Suite 100  
 Fort Lauderdale, FL 33301  
 (954) 561-1111  
 www.kaparch.com

**WRIGHT DYNASTY**  
 12012 N. W. 1st Street  
 Fort Lauderdale, FL 33301  
 (954) 561-1111  
 www.wrightdynasty.com

**STATE OF FLORIDA**  
 DEPARTMENT OF REVENUE  
 DIVISION OF REVENUE  
 12012 N. W. 1st Street  
 Fort Lauderdale, FL 33301  
 (954) 561-1111  
 www.floridarevenue.com

**PROJECT MEMORANDUM**  
 PROJECT: WRIGHT DYNASTY  
 SHEET: A-008  
 DATE: 08/10/17  
 DRAWN BY: [Name]  
 CHECKED BY: [Name]  
 SCALE: 1/8" = 1'-0"





PEDESTRIAN PERSPECTIVE FACING EAST FROM SETRUNK BOULEVARD @ COMMERCIAL PORCHAGE



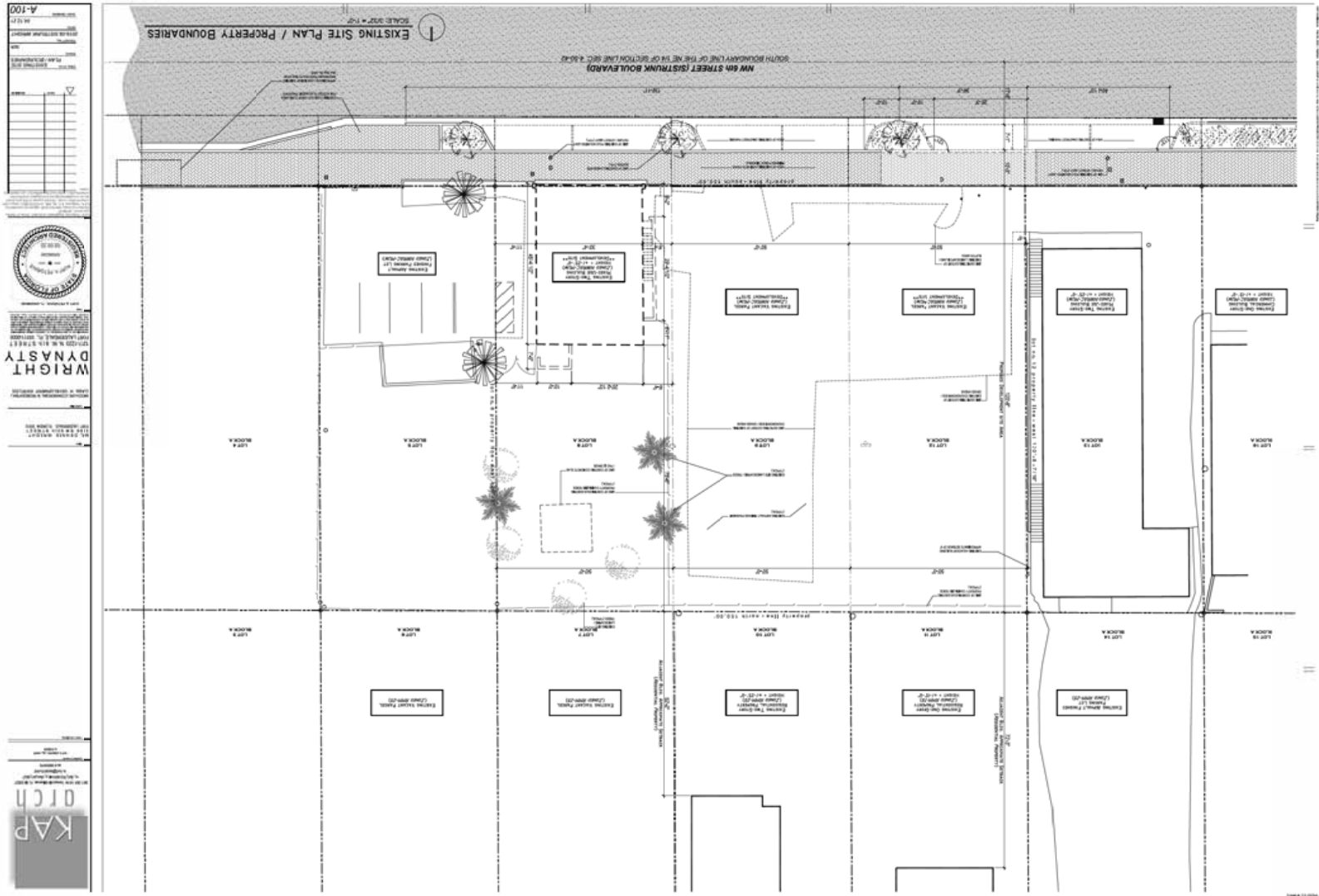
PROJECT PERSPECTIVE FACING WEST FROM SETRUNK BOULEVARD



PEDESTRIAN PERSPECTIVE FACING WEST FROM SETRUNK BOULEVARD @ RESIDENTIAL ENTRANCE







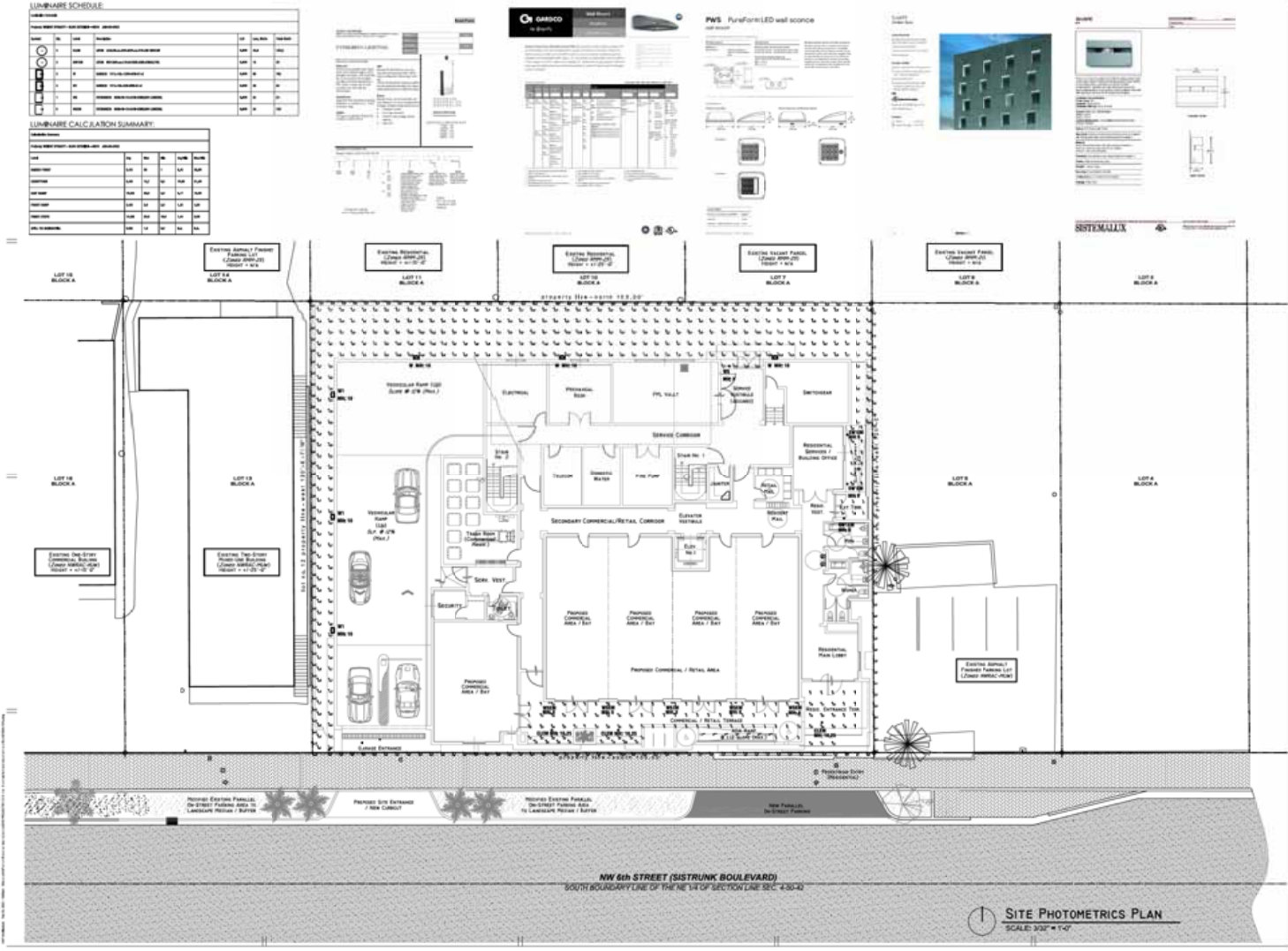












**KAP arch**  
 1010 1st Avenue, Suite 100  
 Fort Lauderdale, FL 33304  
 (954) 571-1111  
 www.kaparch.com

**WRIGHT DYNASTY**  
 1214-1227 N.W. 11th Street  
 Fort Lauderdale, FL 33304  
 (954) 571-1111  
 www.wrightdynasty.com

**STATE OF FLORIDA**  
 DEPARTMENT OF REVENUE  
 DIVISION OF REVENUE, HARBORLAND  
 1000 N.W. 11th Street  
 Fort Lauderdale, FL 33304  
 (954) 571-1111  
 www.floridarevenue.com

**PROJECT INFORMATION**  
 PROJECT: SITE PHOTOMETRICS PLAN  
 CLIENT: KAP arch  
 DATE: 03/23/20  
 DRAWN BY: [Name]  
 CHECKED BY: [Name]  
 SCALE: 1/8" = 1'-0"



## GENERAL NOTES

### STRUCTURAL DESIGN RESISTANCE RATING

NOTES FROM FLOOR RATING CODE: TAKE 80% OF THE RATING VALUE AS DESIGN LOAD. USE 80% TO EVALUATE BEHAVIOR. BUILDING TYPE: 100 CONSTRUCTION THROUGHOUT-TO FULLY SPRINKLED BUILDING

BUILDING ELEMENT	A	B
Primary Structural Members	3 <sup>1</sup>	3 <sup>2</sup>
Roofing and Ceiling	1	2 <sup>3</sup>
Roofing and walls and partitions	2	See Note 802
Roofing and walls and partitions	0	0

1. Floor Construction and Ceiling

2. Non-structural members (see Section 802)

3. Non-structural secondary members (see Section 802)

4. Non-structural secondary members (see Section 802)

5. Non-structural secondary members (see Section 802)

6. Non-structural secondary members (see Section 802)

7. Non-structural secondary members (see Section 802)

8. Non-structural secondary members (see Section 802)

9. Non-structural secondary members (see Section 802)

10. Non-structural secondary members (see Section 802)

11. Non-structural secondary members (see Section 802)

12. Non-structural secondary members (see Section 802)

13. Non-structural secondary members (see Section 802)

14. Non-structural secondary members (see Section 802)

15. Non-structural secondary members (see Section 802)

16. Non-structural secondary members (see Section 802)

17. Non-structural secondary members (see Section 802)

18. Non-structural secondary members (see Section 802)

19. Non-structural secondary members (see Section 802)

20. Non-structural secondary members (see Section 802)

21. Non-structural secondary members (see Section 802)

22. Non-structural secondary members (see Section 802)

23. Non-structural secondary members (see Section 802)

24. Non-structural secondary members (see Section 802)

25. Non-structural secondary members (see Section 802)

26. Non-structural secondary members (see Section 802)

27. Non-structural secondary members (see Section 802)

28. Non-structural secondary members (see Section 802)

29. Non-structural secondary members (see Section 802)

30. Non-structural secondary members (see Section 802)

31. Non-structural secondary members (see Section 802)

32. Non-structural secondary members (see Section 802)

33. Non-structural secondary members (see Section 802)

34. Non-structural secondary members (see Section 802)

35. Non-structural secondary members (see Section 802)

36. Non-structural secondary members (see Section 802)

37. Non-structural secondary members (see Section 802)

38. Non-structural secondary members (see Section 802)

39. Non-structural secondary members (see Section 802)

40. Non-structural secondary members (see Section 802)

41. Non-structural secondary members (see Section 802)

42. Non-structural secondary members (see Section 802)

43. Non-structural secondary members (see Section 802)

44. Non-structural secondary members (see Section 802)

45. Non-structural secondary members (see Section 802)

46. Non-structural secondary members (see Section 802)

47. Non-structural secondary members (see Section 802)

48. Non-structural secondary members (see Section 802)

49. Non-structural secondary members (see Section 802)

50. Non-structural secondary members (see Section 802)

51. Non-structural secondary members (see Section 802)

52. Non-structural secondary members (see Section 802)

53. Non-structural secondary members (see Section 802)

54. Non-structural secondary members (see Section 802)

55. Non-structural secondary members (see Section 802)

56. Non-structural secondary members (see Section 802)

57. Non-structural secondary members (see Section 802)

58. Non-structural secondary members (see Section 802)

59. Non-structural secondary members (see Section 802)

60. Non-structural secondary members (see Section 802)

61. Non-structural secondary members (see Section 802)

62. Non-structural secondary members (see Section 802)

63. Non-structural secondary members (see Section 802)

64. Non-structural secondary members (see Section 802)

65. Non-structural secondary members (see Section 802)

66. Non-structural secondary members (see Section 802)

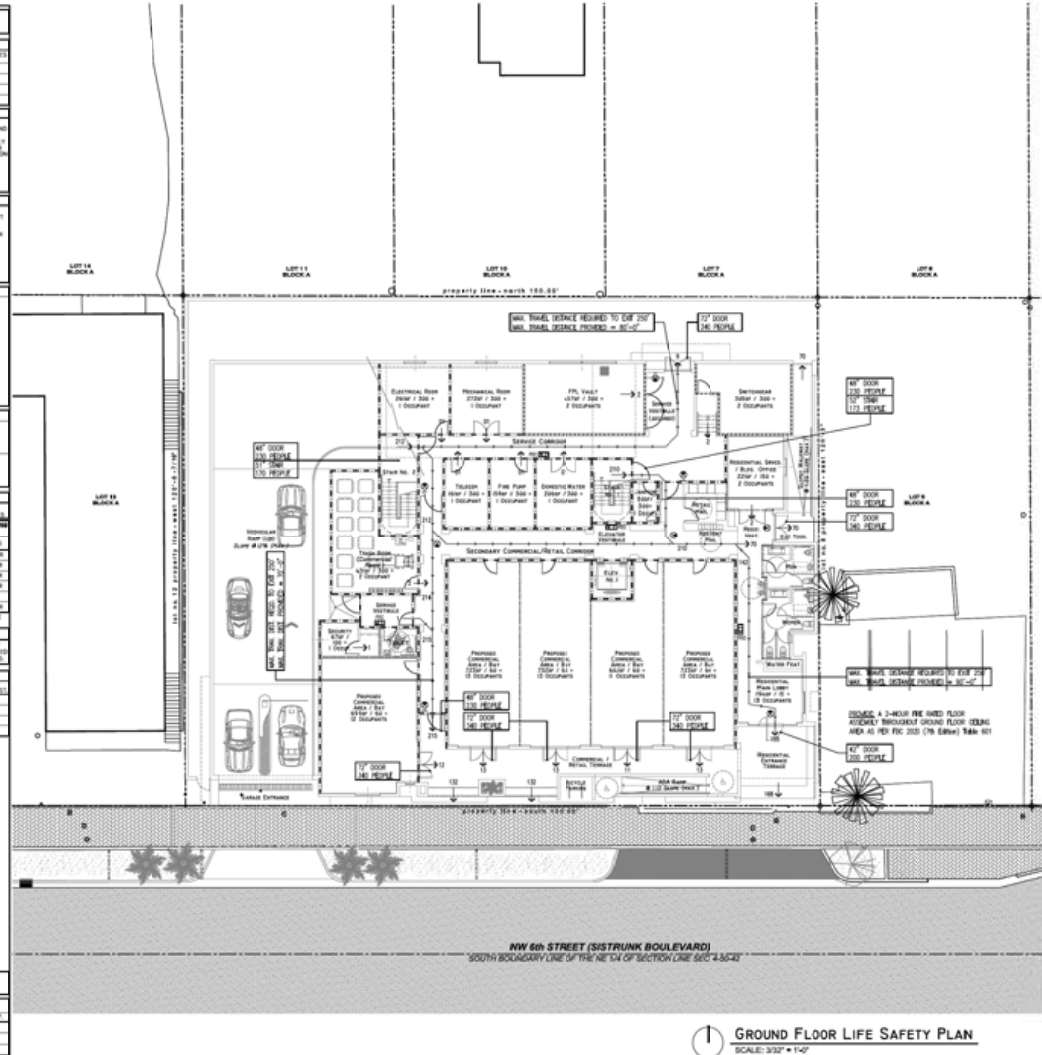
67. Non-structural secondary members (see Section 802)

68. Non-structural secondary members (see Section 802)

69. Non-structural secondary members (see Section 802)

70. Non-structural secondary members (see Section 802)

71. Non-structural secondary members (see Section 802)

[illegible]



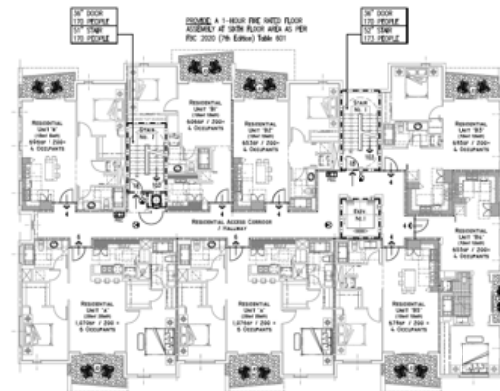
[illegible]

 **FOURTH FLOOR LIFE SAFETY PLAN**  
SCALE: 1/32" = 1'-0"

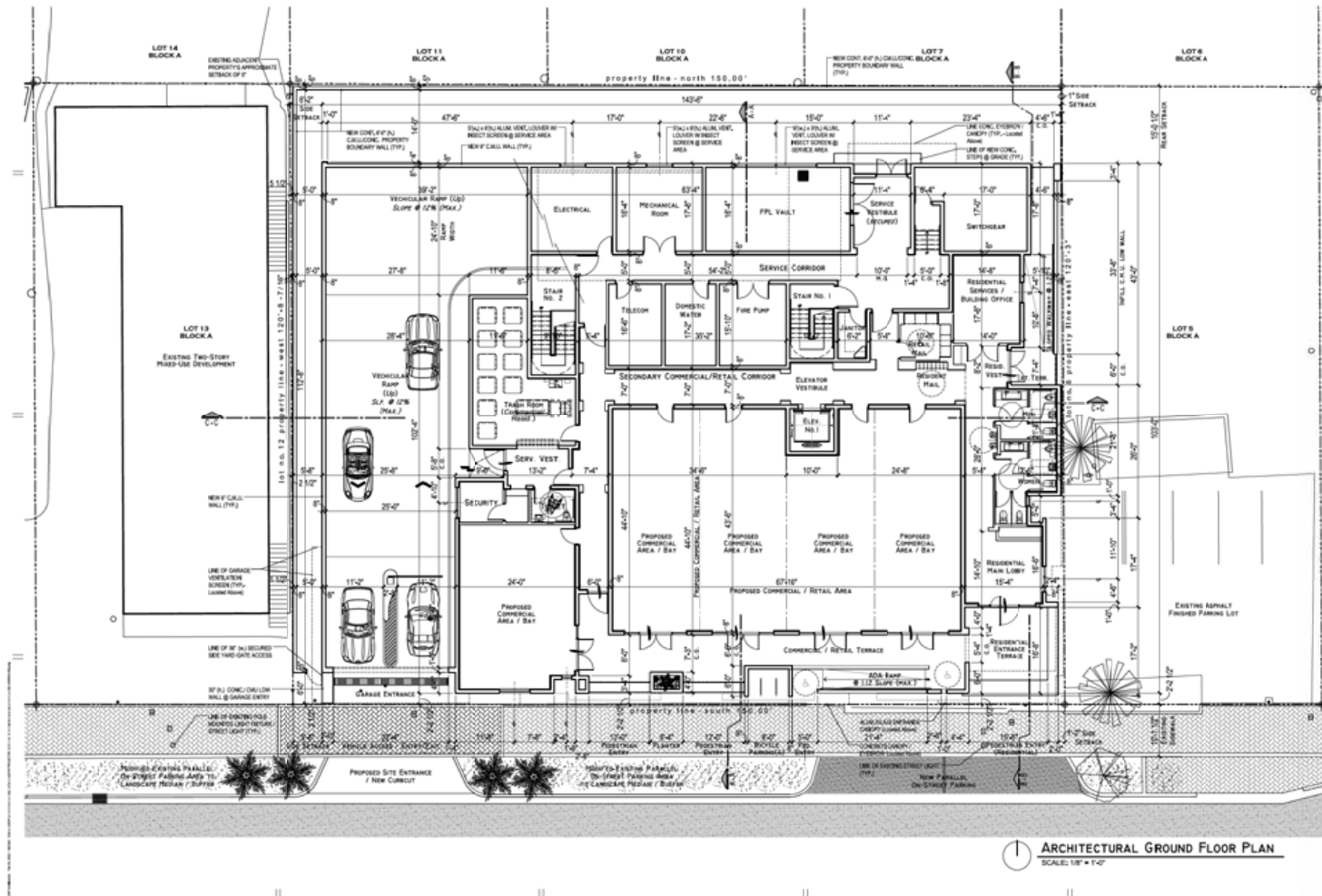


[illegible]

 **ROOF LIFE SAFETY PLAN**  
SCALE: 1/32" = 1'-0"



 **SIXTH FLOOR LIFE SAFETY PLAN**  
SCALE: 1/32" = 1'-0"

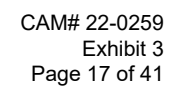


**KAP arch**  
301 N. W. 1st Street, Suite 100  
Fort Lauderdale, FL 33301  
Phone: (954) 551-1111  
Fax: (954) 551-1112  
www.kaparch.com

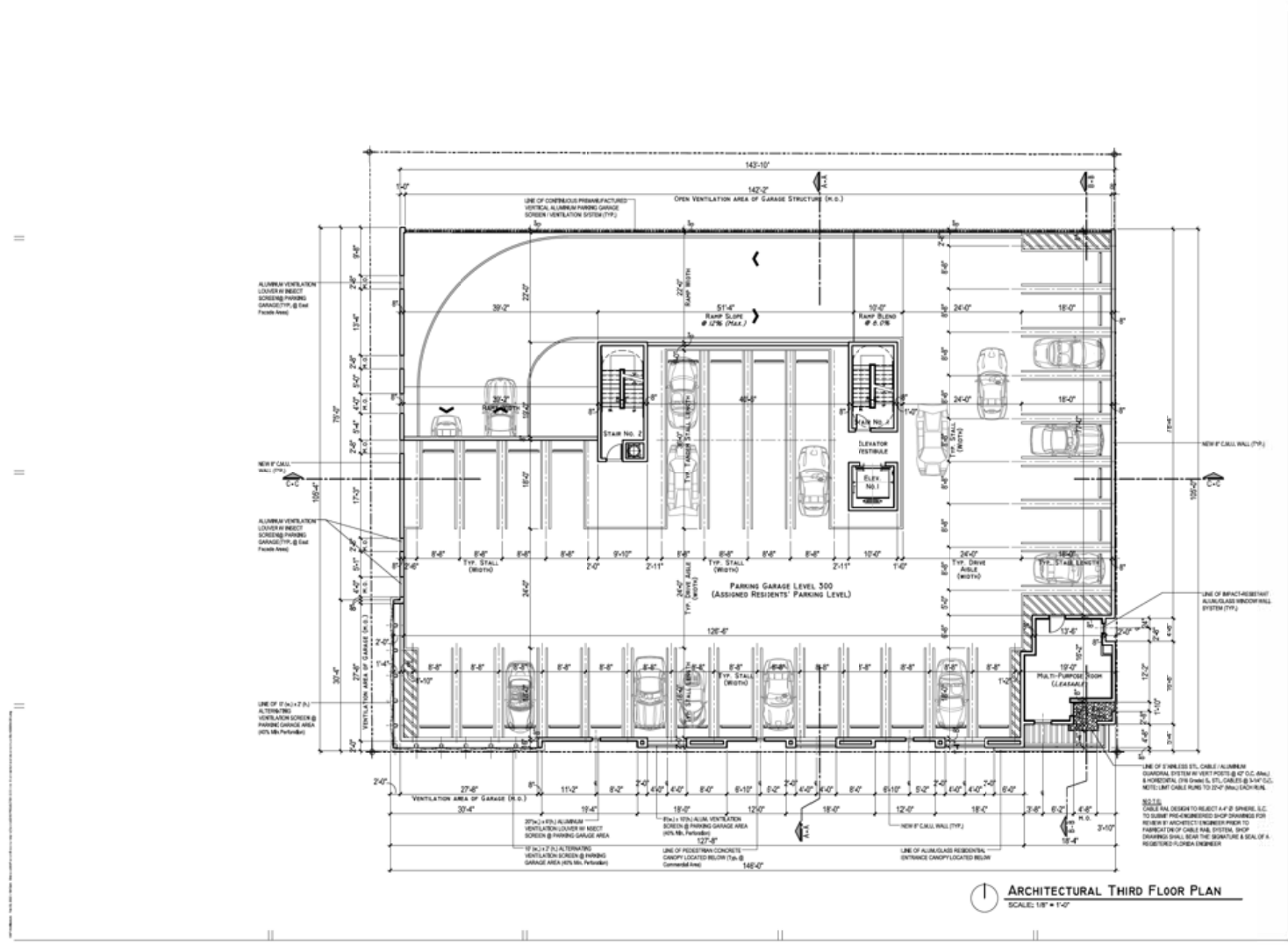
**WRIGHT DYNASTY**  
10101 N. W. 1st Street  
Fort Lauderdale, FL 33301  
Phone: (954) 551-1111  
Fax: (954) 551-1112  
www.wrightdynasty.com

**STATE OF FLORIDA**  
OFFICE OF THE CLERK OF THE SUPREME COURT  
JUDICIAL CIRCUIT IN AND FOR THE COUNTY OF DADE  
CLERK OF THE COURT  
1000 N. W. 1st Street  
Fort Lauderdale, FL 33301  
Phone: (954) 551-1111  
Fax: (954) 551-1112  
www.clerk.state.fl.us

**RECORDING INFORMATION**  
BOOK: 10000  
PAGE: 10000  
DATE: 10/10/2010  
TIME: 10:10:10  
FILE: 10000-10000







1 ARCHITECTURAL THIRD FLOOR PLAN  
SCALE: 1/8" = 1'-0"



**KAP**  
**arch**

3000 N. W. 10th Street, Suite 100  
Fort Lauderdale, FL 33304  
(954) 571-1111  
www.kaparch.com

---



**WRIGHT DYNASTY**

1000 N. W. 10th Street  
Fort Lauderdale, FL 33304  
(954) 571-1111  
www.wrightdynasty.com

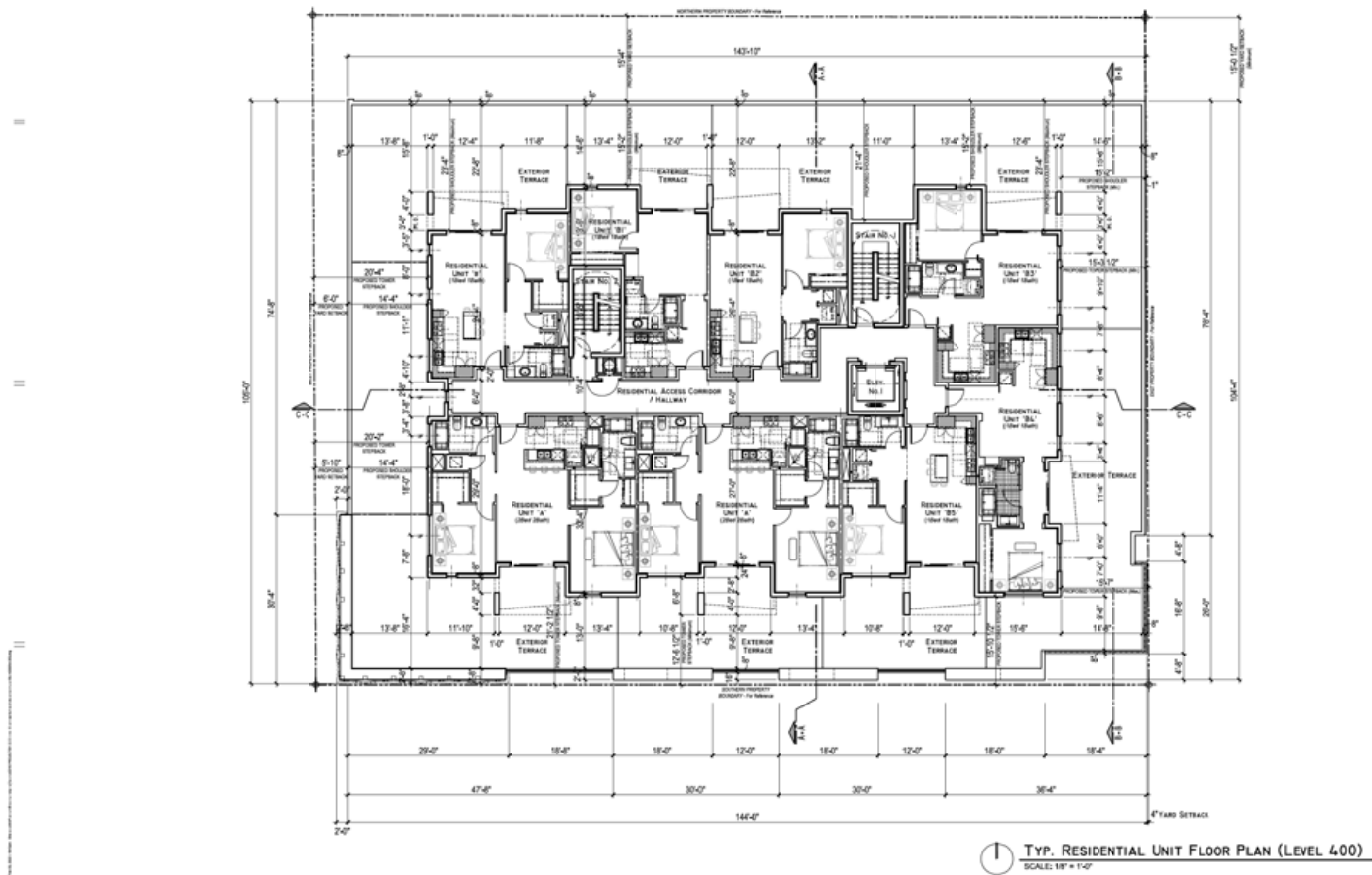
---



STATE OF FLORIDA  
Professional Engineer  
Wright Dynasty  
No. 12345  
Exp. 12/31/2025

---

PROJECT: 22-0259  
SHEET: 302  
DATE: 08/12/21  
BY: [Signature]  
CHECKED: [Signature]  
SCALE: 1/8" = 1'-0"



**KAP arch**  
ARCHITECTS  
1000 N. W. 10th Avenue, Suite 1000  
Fort Lauderdale, FL 33304  
Tel: 954.574.1111  
Fax: 954.574.1112  
www.kaparch.com

**WRIGHT DYNASTY**  
1000 N. W. 10th Avenue, Suite 1000  
Fort Lauderdale, FL 33304  
Tel: 954.574.1111  
Fax: 954.574.1112  
www.wrightdynasty.com

**STATE OF FLORIDA**  
OFFICE OF THE ARCHITECT  
1000 N. W. 10th Avenue, Suite 1000  
Fort Lauderdale, FL 33304  
Tel: 954.574.1111  
Fax: 954.574.1112  
www.flsos.org

**REVISIONS**

NO.	DATE	DESCRIPTION
1	04.12.17	ISSUED FOR PERMIT
2	05.02.18	ISSUED FOR PERMIT
3	05.02.18	ISSUED FOR PERMIT
4	05.02.18	ISSUED FOR PERMIT
5	05.02.18	ISSUED FOR PERMIT
6	05.02.18	ISSUED FOR PERMIT
7	05.02.18	ISSUED FOR PERMIT
8	05.02.18	ISSUED FOR PERMIT
9	05.02.18	ISSUED FOR PERMIT
10	05.02.18	ISSUED FOR PERMIT
11	05.02.18	ISSUED FOR PERMIT
12	05.02.18	ISSUED FOR PERMIT
13	05.02.18	ISSUED FOR PERMIT
14	05.02.18	ISSUED FOR PERMIT
15	05.02.18	ISSUED FOR PERMIT
16	05.02.18	ISSUED FOR PERMIT
17	05.02.18	ISSUED FOR PERMIT
18	05.02.18	ISSUED FOR PERMIT
19	05.02.18	ISSUED FOR PERMIT
20	05.02.18	ISSUED FOR PERMIT
21	05.02.18	ISSUED FOR PERMIT
22	05.02.18	ISSUED FOR PERMIT
23	05.02.18	ISSUED FOR PERMIT
24	05.02.18	ISSUED FOR PERMIT
25	05.02.18	ISSUED FOR PERMIT
26	05.02.18	ISSUED FOR PERMIT
27	05.02.18	ISSUED FOR PERMIT
28	05.02.18	ISSUED FOR PERMIT
29	05.02.18	ISSUED FOR PERMIT
30	05.02.18	ISSUED FOR PERMIT
31	05.02.18	ISSUED FOR PERMIT
32	05.02.18	ISSUED FOR PERMIT
33	05.02.18	ISSUED FOR PERMIT
34	05.02.18	ISSUED FOR PERMIT
35	05.02.18	ISSUED FOR PERMIT
36	05.02.18	ISSUED FOR PERMIT
37	05.02.18	ISSUED FOR PERMIT
38	05.02.18	ISSUED FOR PERMIT
39	05.02.18	ISSUED FOR PERMIT
40	05.02.18	ISSUED FOR PERMIT
41	05.02.18	ISSUED FOR PERMIT
42	05.02.18	ISSUED FOR PERMIT
43	05.02.18	ISSUED FOR PERMIT
44	05.02.18	ISSUED FOR PERMIT
45	05.02.18	ISSUED FOR PERMIT
46	05.02.18	ISSUED FOR PERMIT
47	05.02.18	ISSUED FOR PERMIT
48	05.02.18	ISSUED FOR PERMIT
49	05.02.18	ISSUED FOR PERMIT
50	05.02.18	ISSUED FOR PERMIT
51	05.02.18	ISSUED FOR PERMIT
52	05.02.18	ISSUED FOR PERMIT
53	05.02.18	ISSUED FOR PERMIT
54	05.02.18	ISSUED FOR PERMIT
55	05.02.18	ISSUED FOR PERMIT
56	05.02.18	ISSUED FOR PERMIT
57	05.02.18	ISSUED FOR PERMIT
58	05.02.18	ISSUED FOR PERMIT
59	05.02.18	ISSUED FOR PERMIT
60	05.02.18	ISSUED FOR PERMIT
61	05.02.18	ISSUED FOR PERMIT
62	05.02.18	ISSUED FOR PERMIT
63	05.02.18	ISSUED FOR PERMIT
64	05.02.18	ISSUED FOR PERMIT
65	05.02.18	ISSUED FOR PERMIT
66	05.02.18	ISSUED FOR PERMIT
67	05.02.18	ISSUED FOR PERMIT
68	05.02.18	ISSUED FOR PERMIT
69	05.02.18	ISSUED FOR PERMIT
70	05.02.18	ISSUED FOR PERMIT
71	05.02.18	ISSUED FOR PERMIT
72	05.02.18	ISSUED FOR PERMIT
73	05.02.18	ISSUED FOR PERMIT
74	05.02.18	ISSUED FOR PERMIT
75	05.02.18	ISSUED FOR PERMIT
76	05.02.18	ISSUED FOR PERMIT
77	05.02.18	ISSUED FOR PERMIT
78	05.02.18	ISSUED FOR PERMIT
79	05.02.18	ISSUED FOR PERMIT
80	05.02.18	ISSUED FOR PERMIT
81	05.02.18	ISSUED FOR PERMIT
82	05.02.18	ISSUED FOR PERMIT
83	05.02.18	ISSUED FOR PERMIT
84	05.02.18	ISSUED FOR PERMIT
85	05.02.18	ISSUED FOR PERMIT
86	05.02.18	ISSUED FOR PERMIT
87	05.02.18	ISSUED FOR PERMIT
88	05.02.18	ISSUED FOR PERMIT
89	05.02.18	ISSUED FOR PERMIT
90	05.02.18	ISSUED FOR PERMIT
91	05.02.18	ISSUED FOR PERMIT
92	05.02.18	ISSUED FOR PERMIT
93	05.02.18	ISSUED FOR PERMIT
94	05.02.18	ISSUED FOR PERMIT
95	05.02.18	ISSUED FOR PERMIT
96	05.02.18	ISSUED FOR PERMIT
97	05.02.18	ISSUED FOR PERMIT
98	05.02.18	ISSUED FOR PERMIT
99	05.02.18	ISSUED FOR PERMIT
100	05.02.18	ISSUED FOR PERMIT

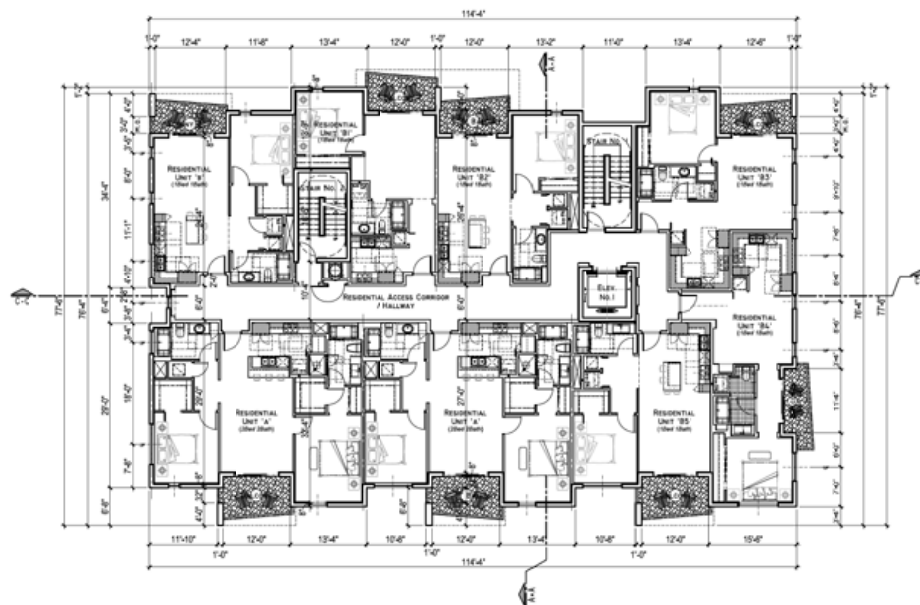
**PROJECT**  
1000 N. W. 10th Avenue, Suite 1000  
Fort Lauderdale, FL 33304  
Tel: 954.574.1111  
Fax: 954.574.1112  
www.kaparch.com

**DATE**  
04.12.17

**BY**  
A-303

**APPROVED**  
05.02.18

**SCALE**  
1/8" = 1'-0"



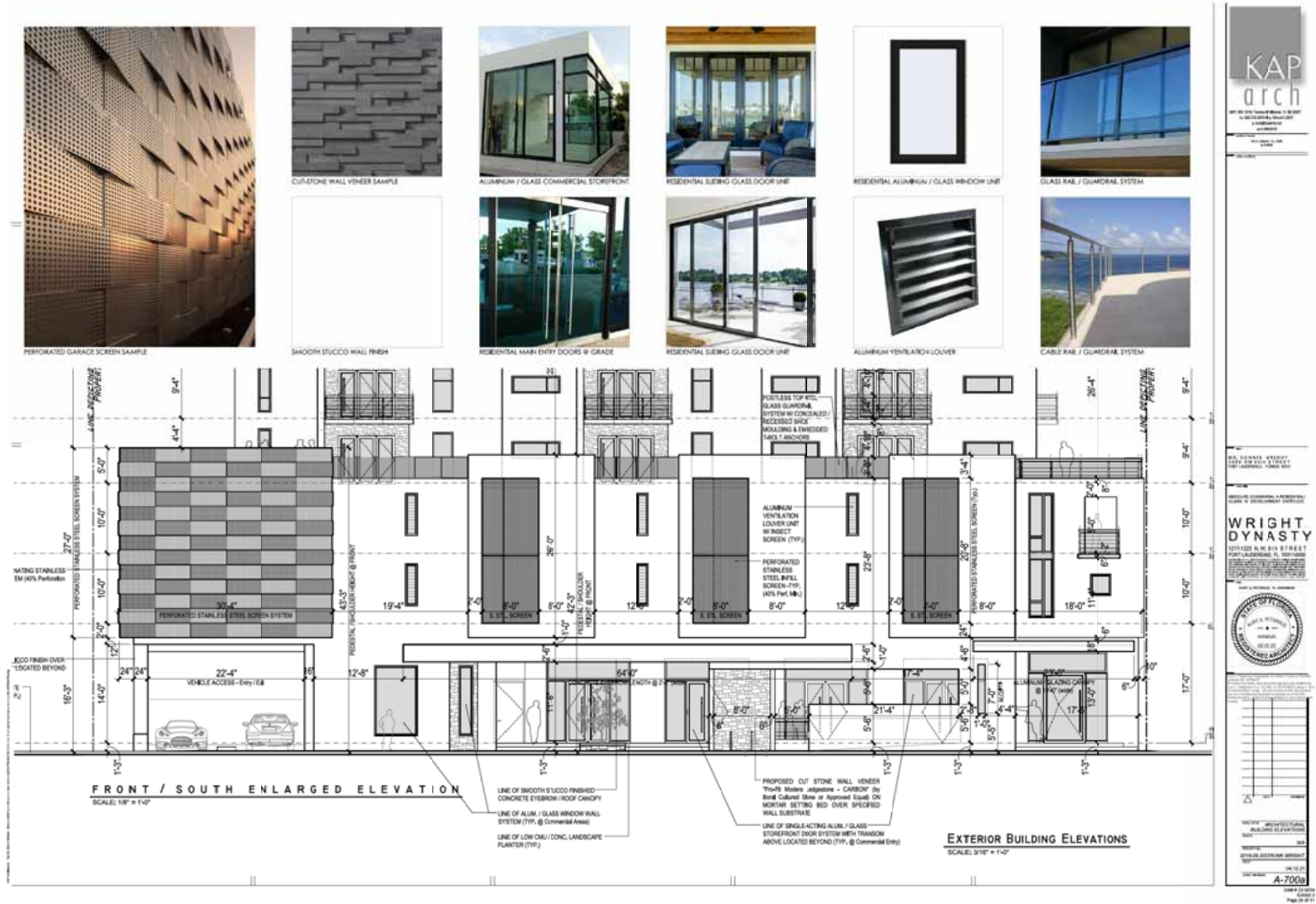

**TYP. RESIDENTIAL UNITS FLOOR PLAN (LEVELS 500)**  
 SCALE: 1/8" = 1'-0"















**FRONT / SOUTH ELEVATION (RENDERED)**  
SCALE: 1/8" = 1'-0"

**EXTERIOR BUILDING ELEVATIONS**  
SCALE: 1/8" = 1'-0"

**KAP arch**  
ARCHITECTS  
1001 N. W. 10th Street, Suite 100  
Fort Lauderdale, FL 33304  
Tel: 954.578.1111  
Fax: 954.578.1112  
www.kaparch.com

**WRIGHT DYNASTY**  
1001 N. W. 10th Street  
Fort Lauderdale, FL 33304  
Tel: 954.578.1111  
Fax: 954.578.1112  
www.kaparch.com

**STATE OF FLORIDA**  
JAMES A. WRIGHT, II, ARCHITECT  
Professional Seal  
Architect No. 12345  
Expiration Date: 12/31/2024

**PROJECT INFORMATION**

PROJECT NAME	WRIGHT DYNASTY
PROJECT ADDRESS	1001 N. W. 10th Street, Fort Lauderdale, FL 33304
OWNER	WRIGHT DYNASTY
DATE	08/10/24
SCALE	1/8" = 1'-0"
PROJECT NUMBER	A-7000

Sheet 1 of 1  
Page 1 of 1



**EXTERIOR BUILDING ELEVATIONS**  
SCALE: 1/8" = 1'-0"



RIGHT-SIDE / EAST ELEVATION (RENDERED)  
SCALE: 1/8" = 1'-0"

EXTERIOR BUILDING ELEVATIONS  
SCALE: 1/8" = 1'-0"

**KAP arch**  
ARCHITECTS  
1001 N. W. 10th Street, Suite 100  
Fort Lauderdale, FL 33304  
TEL: 954.571.1000  
WWW.KAPARCHITECTS.COM

**WRIGHT DYNASTY**  
120122 N. W. 10th STREET  
FORT LAUDERDALE, FL 33304  
TEL: 954.571.1000  
WWW.WRIGHTDYNASTY.COM

**STATE OF FLORIDA**  
SEAL OF THE ARCHITECTS  
JULY 1, 2018  
JULY 1, 2018  
JULY 1, 2018

**A-701a**  
SHEET 1 OF 1  
Page 1 of 1





**REAR / NORTH ELEVATION (RENDERED)**  
SCALE: 1/8" = 1'-0"

**EXTERIOR BUILDING ELEVATIONS**  
SCALE: 1/8" = 1'-0"

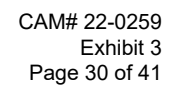
**KAP arch**  
ARCHITECTS  
1001 N. W. 10th Street, Suite 100  
Fort Lauderdale, FL 33304  
TEL: 954.575.1111  
WWW.KAPARCHITECTS.COM

**WRIGHT DYNASTY**  
1001 N. W. 10th Street, Suite 100  
Fort Lauderdale, FL 33304  
TEL: 954.575.1111  
WWW.WRIGHTDYNASTY.COM

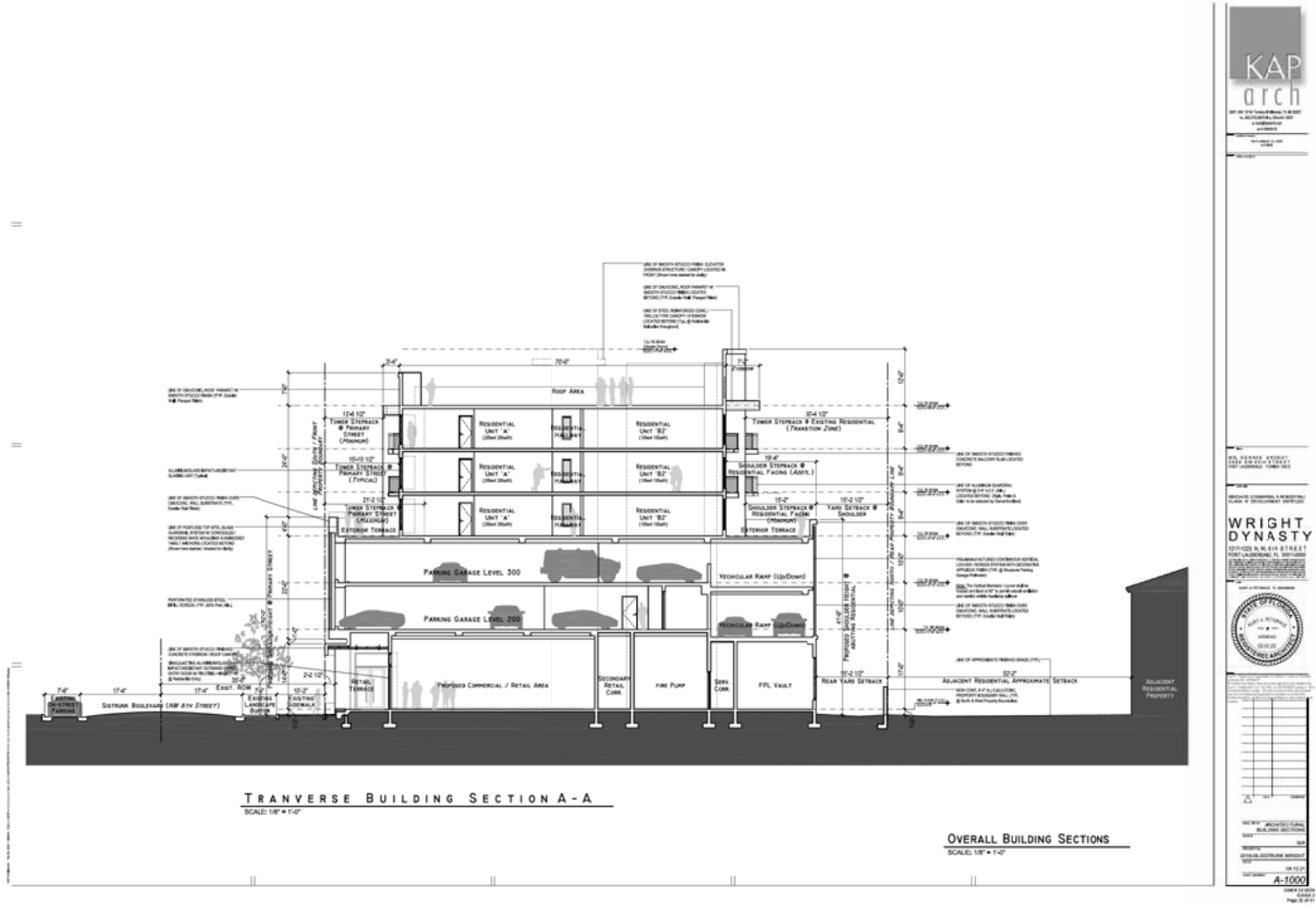
**STATE OF FLORIDA**  
OFFICE OF THE ARCHITECT  
JAMES H. HARRIS, III, ARCHITECT  
1001 N. W. 10th Street, Suite 100  
Fort Lauderdale, FL 33304  
TEL: 954.575.1111  
WWW.FLORIDAARCHITECTS.COM

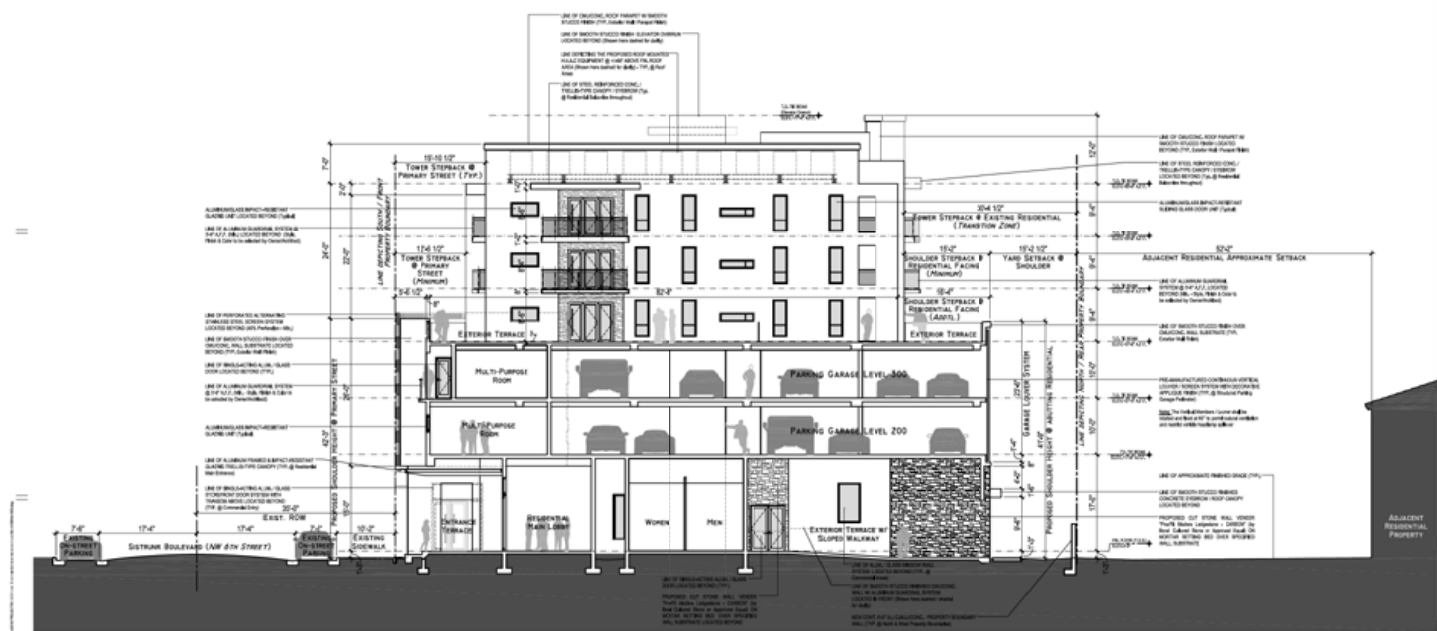
**A-7020**  
08/10/2020  
Page 2 of 2











TRANVERSE BUILDING SECTION B-B  
SCALE: 1/8" = 1'-0"

OVERALL BUILDING SECTIONS  
SCALE: 1/8" = 1'-0"

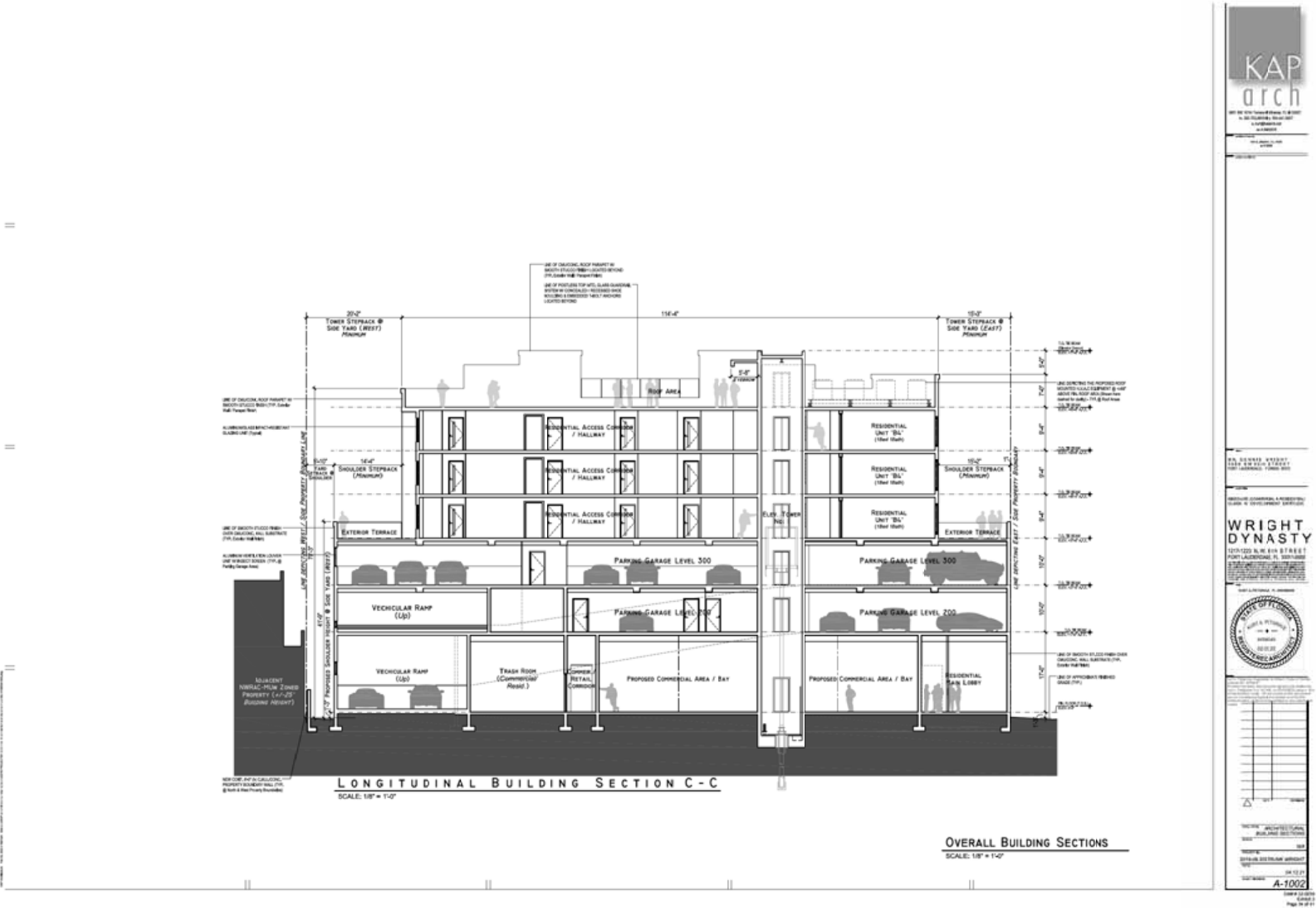
**KAP arch**  
ARCHITECTS  
1000 15th Street, Suite 1000  
San Francisco, CA 94103  
Tel: 415.774.1000  
Fax: 415.774.1001  
www.kaparch.com

**WRIGHT DYNASTY**  
1000 15th Street, Suite 1000  
San Francisco, CA 94103  
Tel: 415.774.1000  
Fax: 415.774.1001  
www.wrightdynasty.com

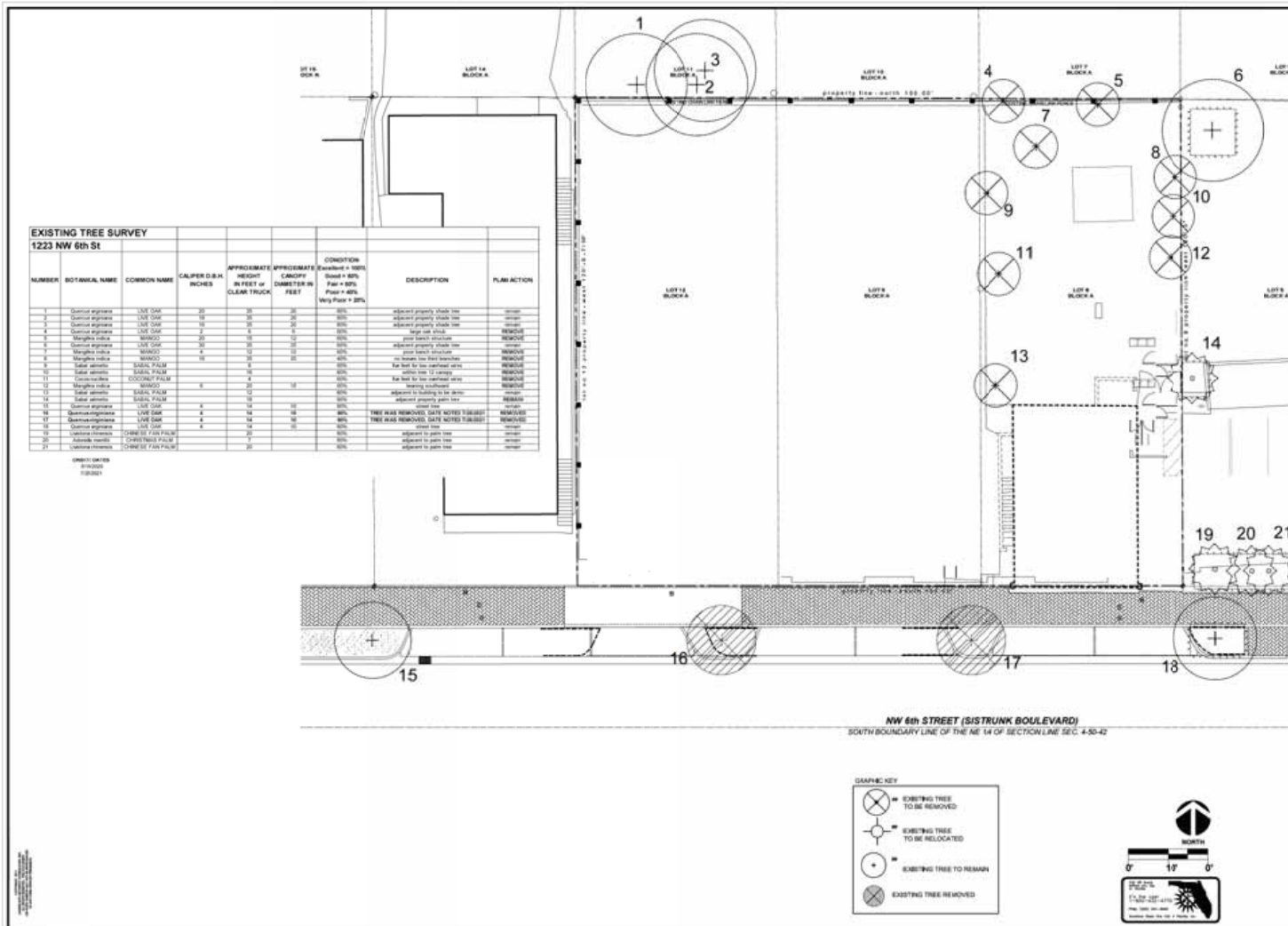
**STATE OF CALIFORNIA**  
OFFICE OF THE ARCHITECT  
1000 15th Street, Suite 1000  
San Francisco, CA 94103  
Tel: 415.774.1000  
Fax: 415.774.1001  
www.sos.ca.gov

**SECTION B-B**  
TRANVERSE BUILDING SECTION  
DATE: 08/10/17  
BY: J. KAP  
CHECKED: J. KAP  
SCALE: 1/8" = 1'-0"

**A-1001**  
08/10/17  
Page 3 of 4







**LANDSCAPE ARCHITECT CONSULTANTS**  
THE W. L. L. COMPANY, INC.  
10000 N. UNIVERSITY BLVD.  
SUITE 100  
FORT LAUDERDALE, FL 33308  
TEL: 954.771.1111  
FAX: 954.771.1112  
WWW.WLLC.COM

**PROJECT:**  
D. WRIGHT DEVELOPMENT (1223 NW 6TH ST)  
FORT LAUDERDALE, FL 33308

**PROJECT NO.:**  
20-025

**SHEET:**  
TS-1 of 1

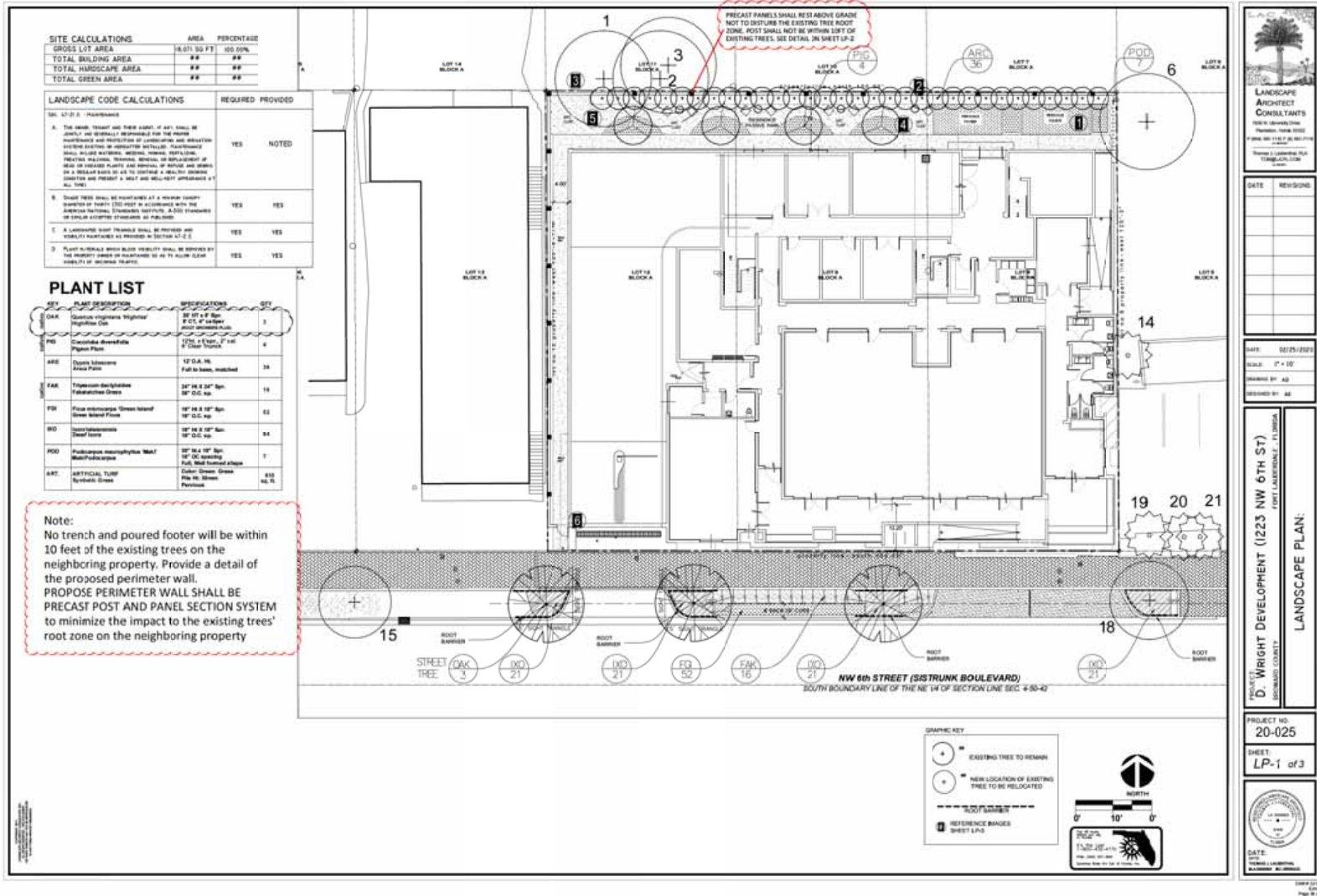
**DATE:**  
12/15/2023

**SCALE:**  
1" = 40'

**DRAWN BY:**  
AD

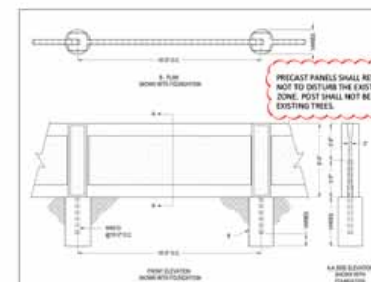
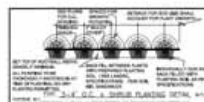
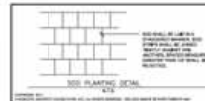
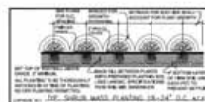
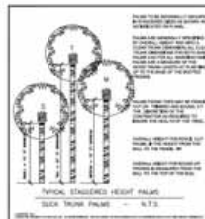
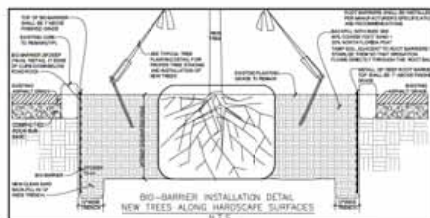
**DESIGNED BY:**  
AD

**TREE INVENTORY PLAN:**



500

## 474

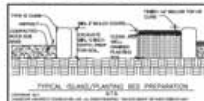
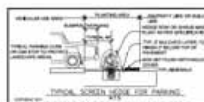
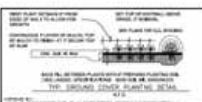
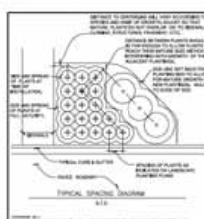
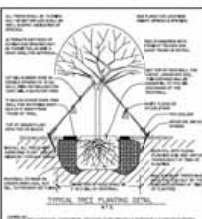


NOTES:

1. INSTALLATION TO BE COMPLETED IN ACCORDANCE WITH MANUFACTURER'S SPECIFICATIONS.
2. VERIFY LOCAL ORDINANCES.
3. THIS DRAWING IS DESIGNED FOR USE BY ARCHITECTS, ENGINEERS, CONTRACTORS, CONSULTANTS AND DESIGN PROFESSIONALS.
4. FOR FINISHED, A SERVICE FENCE (1) THIS DRAWING MAY NOT BE USED FOR CONSTRUCTION.
5. ALL CONSTRUCTION SHALL BE IN ACCORDANCE WITH THE LATEST EDITION OF THE INTERNATIONAL BUILDING CODE (IBC) AND ALL APPLICABLE LOCAL ORDINANCES.
6. THIS PRODUCT IS NOT INTENDED TO BE CONSIDERED A STRUCTURE.
7. CONSTRUCTION OF THIS PRODUCT AND CONFORM TO REQUIREMENTS: [www.ColoradoConcrete.com](http://www.ColoradoConcrete.com) AND EDITIONS THEREOF AS APPLICABLE.

**PRECAST CONCRETE FENCE WALL**

COMPLETE PRECAST WALL DETAILS SHALL BE  
APPROVED BY ENGINEER



### PLANTING NOTES

- [illegible]



DATE	REVISION

DATE	02/25/2
LOCAL	N.Y.C.
ISSUED BY	AD
DELIVERED BY	AD

RIGHT DEVELOPMENT (1223 NW 6TH ST)  
FORT LAUDERDALE, FL 33304  
COUNTY  
LANDSCAPE NOTES & DETAIL S.

PROJECT NO.  
20-025

SHEET:  
LP-2 of 3



DATE: \_\_\_\_\_  
 DATE: \_\_\_\_\_  
 TURNING 1 (VALUATION)



1. LOUNGE AREAS



2. ARECA PALM PRIVACY HEDGE



3. PERIMETER WALL



4. LANDSCAPED AREA



5. PREVIOUS TURF GRASS



6. SECURITY GATE



DATE	REVISIONS

DATE: 02/25/2020  
 SCALE: 1" = 10'  
 DRAWING BY: AD  
 DESIGNED BY: AD

PROJECT: D. WRIGHT DEVELOPMENT (1225 NW 6TH ST)  
 HIGHLAND COUNTY  
 REFERENCE IMAGES

PROJECT NO:  
 20-025  
 SHEET  
 LP-3 of 3



DATE: 02/25/2020  
 DRAWN BY: AD  
 CHECKED BY: AD







