



1

Solid Waste Working Group- **UPDATE**

COMMISSION CONFERENCE
MAY 17, 2022



Quick History

3

- 1986** Broward County and Cities entered into an ILA establishing the Broward County Solid Waste Disposal District and the Resource Recovery Board
- 2013** Resource Recovery Board, ILA and disposal agreements sunset

Quick History

4

- 2013-15** Broward County sued by 18 Cities, including City of Fort Lauderdale, for assets related to the Resource Recovery Board; Settlement reached
- 2016** City approved First Amendment to the Settlement Agreement delaying sale of property and agreeing to solid waste study (Arcadis)
- 2018** City approved Second Amendment to the Settlement Agreement further extending sale of property and allowing for exploration of solid waste study

Quick History

5

- 2019** City approved Memorandum of Understanding to collaborate in the development of an integrated, regional solid waste system
- 2019- Now** City assumed leadership role in Solid Waste Working Group
- 2022** City approved First Amendment to the Memorandum of Understanding committing to Solid Waste Generation and Composition Study

Recap- Update and Governance Structure Presentation

May 18, 2021

6



Waste Composition Study and Shared Cost Scenario



County to notify Waste-to-Energy Plant of Intent to Renew by January 15, 2022



County to begin negotiations with Waste-to-Energy Plant for next contract



Discuss Governance Structure Options



Waste Generation & Composition

7



Process and deliverables of waste generation study



Process and deliverables of a waste composition study



Uses of the studies



Potential next steps

Waste Generation Study (WGS)

8

What is it? - A generation factor derived through a statistically-defensible calculation of the average **amount** of waste (by weight) created residentially and commercially.

How is it done? - Generation factors established and grouped by land-use codes (LUCs) using data from:

- ▶ haulers
- ▶ scales
- ▶ municipal data
- ▶ scale house reports
- ▶ direct observation (ie, “ride-alongs”)

Waste Generation Study (WGS)

Result – Generation factor for waste established by LUC

9

Residential Category	Garbage & Trash	
	(Tons)	Vegetation (Tons)
Single Family	1.1	0.85
Mobile Family	1.1	0.58
Multifamily Combined	0.71	0

PA	PA Description	Total Volume per SF Study%	Average Density PA	Average Density Total	Average Generation per SF PA Density	Average Generation per SF Study Density
1700	Dormitory	0.05	154.82	157.94	8.10	8.26
3400	Strip Store	0.03	139.45	157.94	4.00	4.53
3500	Retail Shop	0.05	156.77	157.94	7.47	7.53
3600	Discount Store	0.04	116.53	157.94	4.92	6.67
3700	Department Store	0.02	110.34	157.94	1.72	2.47
3800	Neighborhood Shopping Center	0.04	170.55	157.94	6.58	6.10
3900	Community Shopping Center	0.02	150.93	157.94	3.06	3.20
4000	Shopping Center Regional	0.03	228.83	157.94	6.20	4.28
4100	Shopping Center Super Regional	0.04	174.36	157.94	6.68	6.05
4200	Supermarket	0.09	180.74	157.94	16.35	14.29
4300	Convenience Store	0.17	122.90	157.94	21.33	27.42

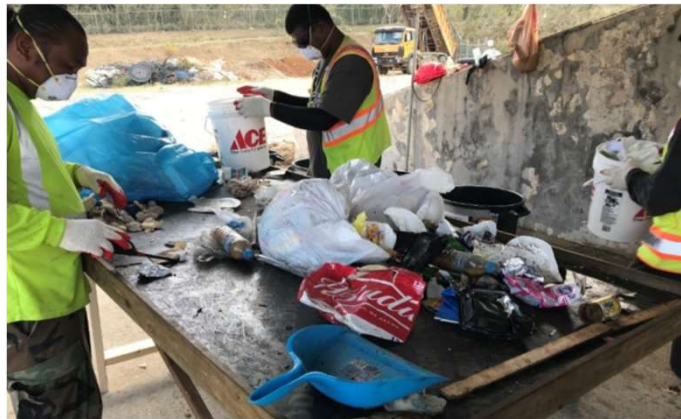
Examples*

Uses – to provide a basis for determining a special assessment and/or for planning purposes.

Waste Composition Study (WCS)

What is it? – An evaluation of the **composition/type** of waste (e.g., recyclables, yard waste) generated.

How is it done? – Waste composition data is collected by direct observation (“sorts”).

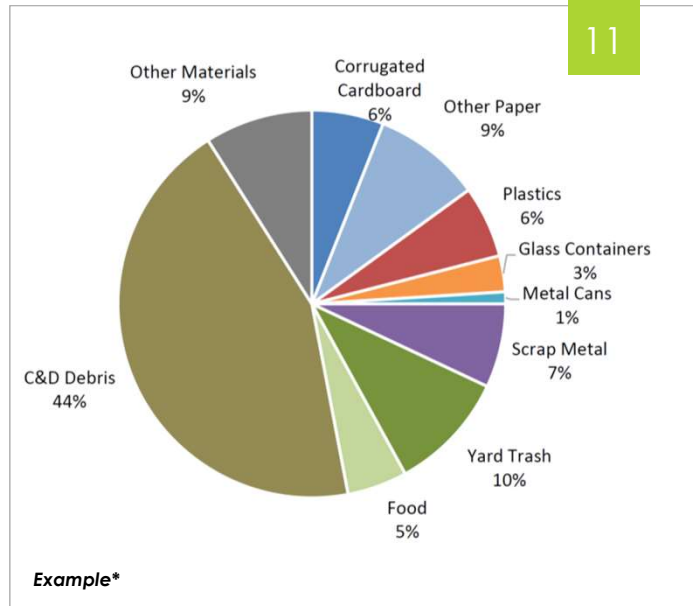


10

Waste Composition Study (WCS)

Result – Analysis of composition of waste

Uses – planning purposes, educational campaigns, and/or to determine types of facilities needed.



11

Next Steps Being Considered

12

Revenue Requirement/Financial Projections
 Provide a financial model that projects revenue requirements for the new entity.

Non-Ad Valorem Assessment and Rate Planning
 Utilizing the data from WGS, develop a statistically-valid special assessment rate structure to meet the revenue requirements of the new entity.

Tipping Fee Surcharge Study
 Determine the level of surcharges required to meet the interim financial need of the system until a special assessment is in place.

Support to Bond Issuance
 Provide feasibility reports needed for revenue bond financing of capital assets.

Communication/Outreach
 Planning and implementing public relations/communications with stakeholders to educate on the importance of solid waste and obtain support for the new system/special assessment.

Solid Waste Master Plan
 Establish a comprehensive planning framework and strategic direction for the management of waste for the County and its municipalities for the upcoming decades.

Solid Waste Working Group Members 13

Broward County

Commissioner Beam Furr
Vice Chair SWWG

Most Populous Cities (4 Representatives)

Commissioner Steve Glassman Fort Lauderdale

Commissioner Tom Good
Pembroke Pines
Commissioner Tom McMahon
Pompano Beach
Mayor Mike Ryan
Sunrise

Second Most Populous Cities (3 Representatives)

Commissioner Becky Tooley
Coconut Creek
Mayor Greg Ross
Cooper City, Chair SWWG
Commissioner Sabrina Javellana
Hallandale Beach

Third Most Populous Cities (1 Representative)

Commissioner Bob Mayersohn
Parkland

Solid Waste Authority 14

Mission Statement

To protect the long-term public health, safety and welfare, the Parties commit to working together collaboratively through the creation of the Authority. The Authority will develop and implement a long-term, environmentally sustainable, transparent, innovative, and economically efficient plan and approach to disposal, reduction, recycling, and reuse of Solid Waste generated in Broward County.

Discussions Getting Attention

15

Sun Sentinel News



Broward's trash-hauling could see big change: 30 cities back creating new system

Residents all across Broward could be getting a new trash-hauling system — in a move that cities...

By Lisa J. Huriash | April 7, 2022

Broward's trash woes

MIAMI | SOUTH FLORIDA

There are a lot of residents in Broward County who are **not happy** with their trash and recycling service.

So much so, that nearly all municipalities have created a group that's trying to form a new trash tax district. That group is called the Solid Waste Working Group.

Broward County Commissioner Beam Furr is the Vice-Chair of that group. He joined Sundial to discuss this endeavor.

Broward faces a costly recycling crisis it needs to fix quickly



Recycling in Broward County is in crisis, and the county is under the gun to fix it before it completely collapses.

"It is hanging on by a thread," County Commissioner Beam Furr said. "Unfortunately," Furr, who represents District 6, has been leading the charge to overhaul how the county manages its

BROWARD COUNTY NEWS

Recycling has gone to waste in Broward County, but changes may be coming

By Lisa J. Huriash
South Florida Sun-Sentinel • Jul 20, 2021 at 3:05 pm

BROWARD COUNTY NEWS

Cities organizing to toss Waste Management to the curb

By Lisa J. Huriash
South Florida Sun-Sentinel • Feb 27, 2020 at 1:13 pm

A1 TOP STORY / OCTOBER 16, 2019 5:28 AM / 6699 SEEN / READ 1 COMMENT

Broward County, cities moving to chart the future of garbage disposal and recycling

Solid Waste Authority Structure

16

Governing Board

1 representative per government party

Executive Committee

11 members selected from the Governing Board

1 County member and 10 members in categories representing Large, Medium, and Small Municipalities

Technical Advisory Committee

Executive Director

Appointed by Governing Board

Solid Waste Authority Activities

17

Master Plan of Operations

The comprehensive planning framework and strategic direction to manage waste and recyclables, across Broward, consistent with the parties' responsibilities under applicable law

Special Assessments

To fund the services provided by the Authority

Flow Control

To direct waste and recyclables to appropriate facilities

Potential Infrastructure

18

4 th Burner at Waste to Energy Plant:	\$	180 M
New Waste to Energy Plant:	\$	945 M
Material Recovery Process Facility:	\$	63 M
Yard Waste Facility:	\$	3 M
Combined Yard Waste/C & D/Bulk:	\$	42 M
Mixed Waste Processing Facility:	\$	172 M
Organics Processing Facility:	\$	52 M

All estimated costs in 2040 dollars



Solid Waste Authority

Membership Obligations

19

Adoption of Master Plan of Operations

- Requires 80% supermajority of Governing Board (by population) plus County
- Parties that do not adopt first Master Plan may withdraw

Funding Obligations before Special Assessment

- Prior to Special Assessments, each party will contribute funds based on population

Commitment of Waste Stream

- Parties adopt flow control ordinances to direct waste

Interlocal Agreement

20

Draft ILA document to be completed by summer and sent to participating Cities to review and provide feedback





21

Questions