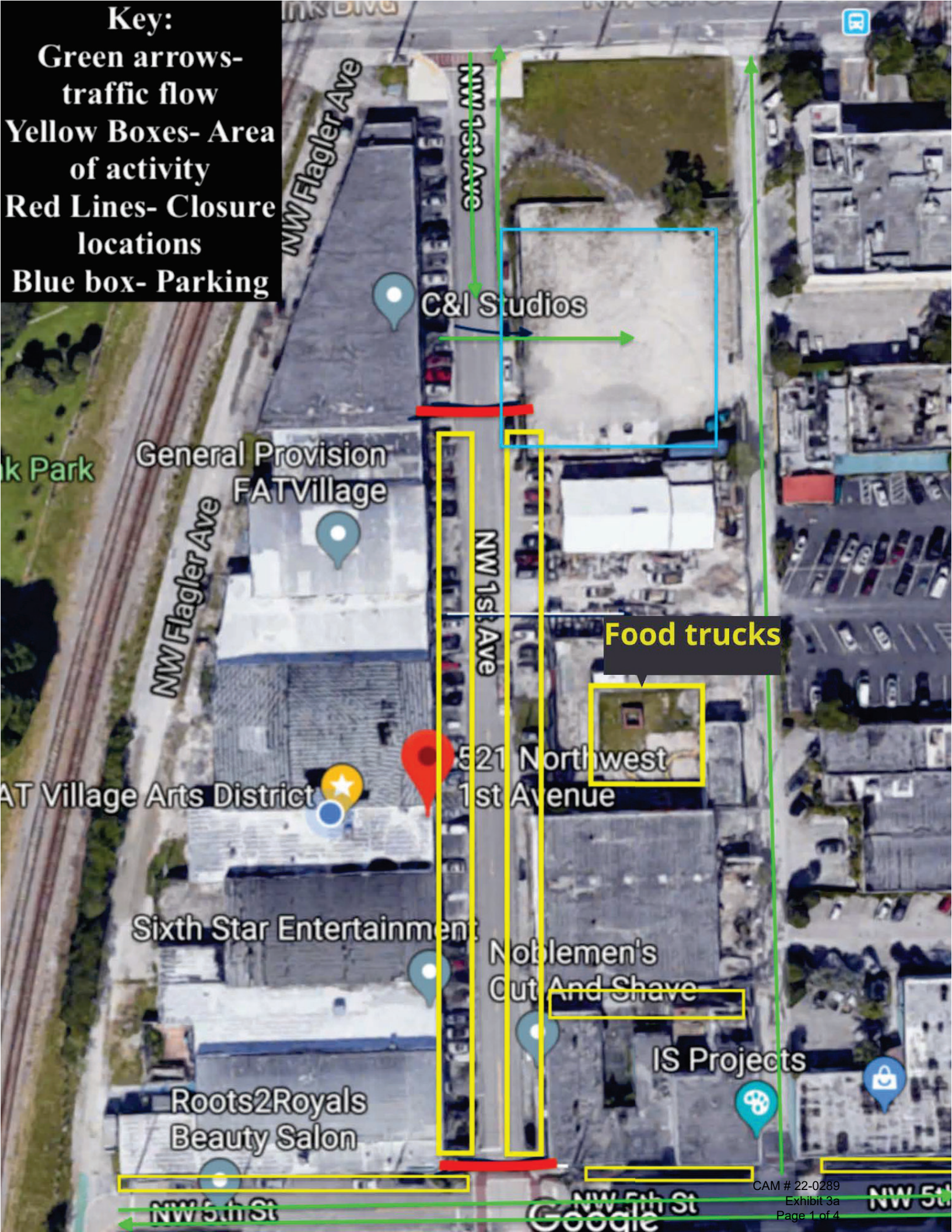


Key:
Green arrows-
traffic flow
Yellow Boxes- Area
of activity
Red Lines- Closure
locations
Blue box- Parking



DISTANCE BETWEEN SIGNS

Speed	Spacing (ft.)		
	A	B	C
40 mph or less	200	200	200
45 mph	350	350	350



MARK MEYERS
 The Traffic Control Experts
 Mark Meyers
 Has Completed a Florida Department of Transportation Approved
 Temporary Traffic Control (TTC) Advanced (Refresher) Course.
 Date Expires: 02/11/2023
 Instructor: Ricardo Cabrera
 Certificate # 47259
 FOOT Provider # 37

ATSSA
 404-368-1701
 15 Riverside Parkway Ste. 100
 Fredericksburg, VA
 donna.clark@atssa.com

ATSSA
 1878 MARK MEYERS LIVES

Table 1
Device Spacing

Speed (mph)	Max. Distance Between Devices (ft.)			
	Cones or Tubular Markers	Type I or Type II Barricades or Vertical Panels or Drums	Taper	Tangent
25	25	50	25	50
30 to 45	25	50	30	50

Notes for Figure 6H-20—Typical Application 20 Detour for a Closed Street

Guidance:

1. *This plan should be used for streets without posted route numbers.*
2. *On multi-lane streets, Detour signs with an Advance Turn Arrow should be used in advance of a turn.*

Option:

3. Flashing warning lights and/or flags may be used to call attention to the advance warning signs.
4. Flashing warning lights may be used on Type 3 Barricades.
5. Detour signs may be located on the far side of intersections. A Detour sign with an advance arrow may be used in advance of a turn.
6. A Street Name sign may be mounted with the Detour sign. The Street Name sign may be either white on green or black on orange.

Standard:

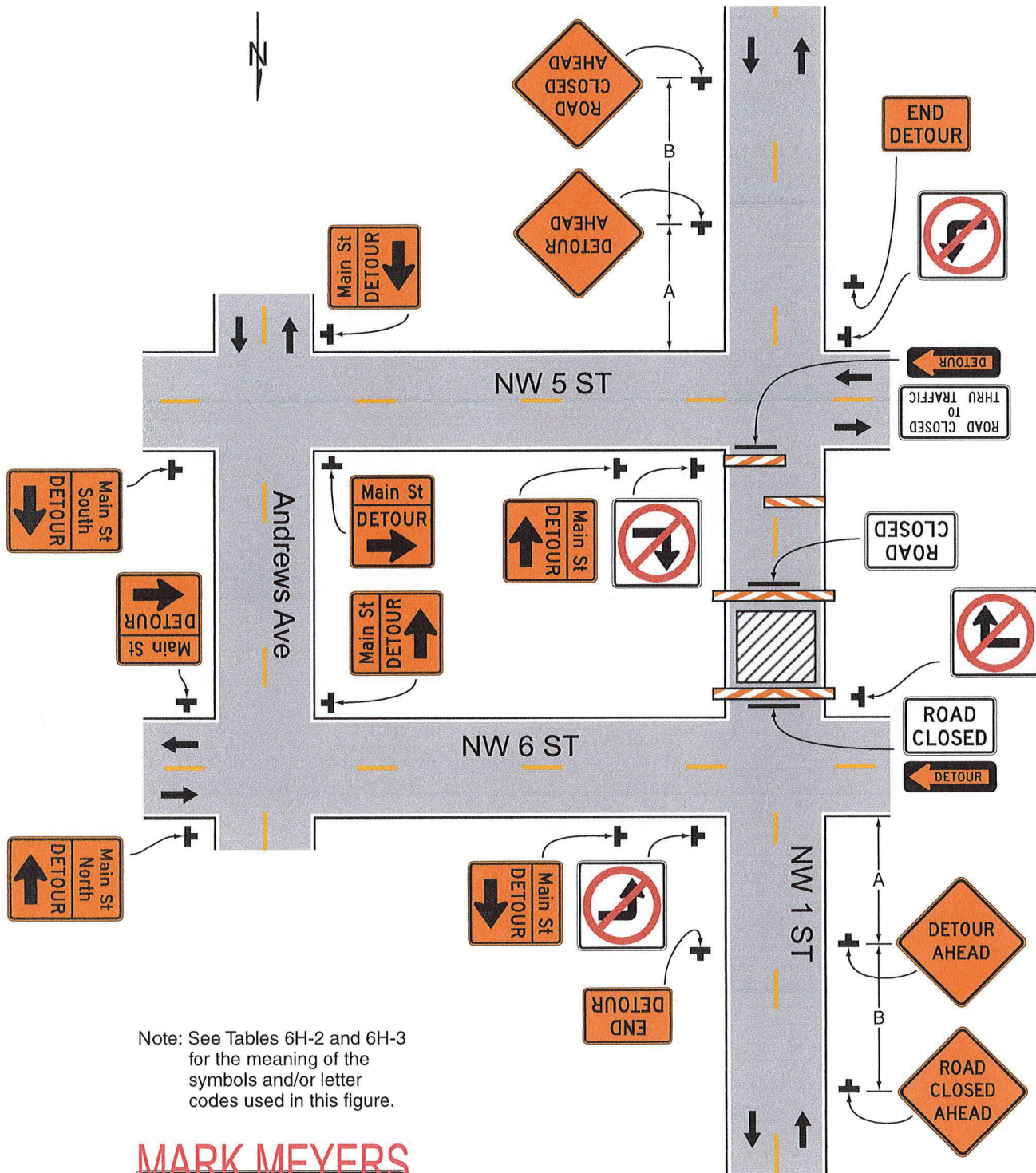
7. **When used, the Street Name sign shall be placed above the Detour sign.**

Support:

8. See Figure 6H-9 for the information for detouring a numbered highway.



Figure 6H-20. Detour for a Closed Street (TA-20)



Note: See Tables 6H-2 and 6H-3 for the meaning of the symbols and/or letter codes used in this figure.



Typical Application 20