

City of Fort Lauderdale

*City Hall
100 North Andrews Avenue
Fort Lauderdale, FL 33301
www.fortlauderdale.gov*



Meeting Minutes - APPROVED

Wednesday, November 9, 2016

12:00 PM

**Joint Workshop with the Parks, Recreation and Beaches Advisory
Board
City Commission Conference Room**

CITY COMMISSION WORKSHOP

FORT LAUDERDALE CITY COMMISSION

***JOHN P. "JACK" SEILER Mayor - Commissioner
DEAN J. TRANTALIS Vice Mayor - Commissioner - District II
BRUCE G. ROBERTS - Commissioner - District I
ROBERT L. McKINZIE - Commissioner - District III
ROMNEY ROGERS - Commissioner - District IV***

***LEE R. FELDMAN, City Manager
JOHN HERBST, City Auditor
JEFFREY A. MODARELLI, City Clerk
CYNTHIA A. EVERETT, City Attorney***

ROLL CALL

Present: 5 - Commissioner Romney Rogers, Commissioner Bruce G. Roberts, Vice Mayor Dean J. Trantalis, Commissioner Robert L. McKinzie, and Mayor John P. "Jack" Seiler

Also Present: City Manager Lee R. Feldman, City Clerk Jeffrey A. Modarelli, Assistant City Attorney Cole Copertino, and City Auditor John Herbst

Parks, Recreation and Beaches Advisory Board:

Present: Chair Debby Eisinger, Vice Chair Caleb Gunter, Brucie Cummings, Darin Lentner, Esq., Karen Polivka, Jo Ann Smith

Not Present: Ryan Fletcher, Ronald Goff, James B. Jordan, JoAnn Medalie, Bruce A. Qualey, Jo Ann Smith

CALL TO ORDER

Mayor Seiler called the City Commission's Joint Workshop with the Parks, Recreation and Beaches Board to order at 12:18 p.m.

PRESENTATIONS

[16-1424](#)

Parks and Recreation Master Plan Presentation by Aecom

Mr. Phil Thornburg, Director of Parks and Recreation, addressed the City Commission and the members of the Parks, Recreation, and Beaches Board. Mr. Thornburg stated the City had requested AECOM to develop and in-depth presentation on a Comprehensive Parks System Master Plan (Plan) to serve as a guide for the planning, acquisition, development, and operations of Parks and Recreation programs and facilities in the City. (AECOM is a professional engineering firm that provides professional design, engineering, consulting, construction, and project management services to a wide range of global clients.)

A copy of the AECOM Presentation is attached to these minutes.

Mr. Thornburg introduced Mr. Joe Webb of AECOM who thanked the Commission for the opportunity to work with the City and its staff. Mr.

Webb also noted his colleague in attendance, Mr. Nick Cune. Mr. Webb stated they welcome any comments and questions both during and following the presentation.

Mr. Webb said the purpose of this project was to develop a Comprehensive Parks Master Plan (Plan) for the City that looks forward 30 years while taking into consideration that Parks and Recreation for the City, the nation, and the world is changing. The goal of this Plan is to put the City's Parks Department in the best position to be ahead of the curve and progressive.

Mr. Webb noted the Plan looks at the City's Parks by comprehensively studying the linkages between and access to green areas, the historical and cultural facilities, and how they work together to service the community. Additionally, the Plan works towards advancing the City's greater vision of how Parks can work in concert to promote the City's broader vision for its many initiatives including Press Play and Fast Forward for the future planning efforts of the City.

Mr. Webb explained AECOM's process over the last 16 to 18 months including an assessment of where the City is, where the City would like to be. Mr. Webb reviewed and highlighted the process AECOM went through to arrive at the Plan. He noted that the process included reading the City's guiding documents (research and analysis), its future direction about development along mass transit lines and connections and its future population growth.

Vice Mayor Trantalis asked about the future population growth between Sunrise Boulevard and 13th Street North as result of the long-range transportation Plan for Broward County versus the high density that currently exists in the areas North and South of Broward Boulevard. Vice Mayor Trantalis noted the necessity of integrating Parks in popular high-density areas of the Plan. Mayor Seiler noted the Plan also provides for future areas of high density. Commissioner Rogers commented that future development in the Sunrise Boulevard area could impact the City's Parks. Vice Mayor Trantalis noted that the zoning in the Sunrise Boulevard area North would not equate to the current high-density areas North and South of Broward Boulevard. Mayor Seiler concurred with Vice Mayor Trantalis that the area North of Sunrise would be less dense than the downtown area of Broward Boulevard. Mayor Seiler also agreed with Commissioner Rogers that the Davie Boulevard South area density would be higher. Mr. Webb agreed that there could be a variance in density in the future.

Debby Eisinger, Chair of the Parks, Recreation and Beach Board

(Board), asked if the information received from AECOM came from the City or the County. Mayor Seiler noted that this information most likely came from the County. Ms. Eisinger agreed with Vice Mayor Trantalis's comments regarding high-density areas. Further comments ensued on high-density areas of the City. Mr. Webb stated they would modify the areas of high density in their presentation. Mr. Webb discussed the transformational aspects as to how the City will provide ways to accommodate the City's Parks Services in high-density areas. Discussions continued on the future demographics of the City.

Mr. Webb outlined the City's inventory assessment of its Parks as it relates to their effectiveness. He noted the high level of maintenance was well done at the City's Parks. He also said the assessment pointed out that there was no consistent branding of the City's Parks and their signage was inconsistent. The assessment also observed that there is an opportunity for incorporating sustainability and resiliency practices that could be integrated into the City's Parks because many aspects of the Parks have run through their useful life cycle resulting in the need for capital improvements and redevelopment. Mr. Webb noted the additional challenge of modifying the City's Parks and Community Centers for new lifestyles.

Mr. Webb noted the level of service for access to the City's Parks is good though there is room for improvement to include cooperation with schools. Mr. Webb noted the public's involvement in the Plan's survey included community meetings, focus groups, stakeholders, an online public opinion survey, and a statistically valid survey resulting in a rounded viewpoint. As a result of this involvement, the common themes of the survey are noted on page 8 of the attached presentation.

Mayor Seiler questioned the results of the survey as to the lack of sports fields for youth activities stating it is the number one issue he hears about from citizens. Further comments and discussions continued on the lack of sports fields in the City.

Chair Eisinger asked the process used for reaching out to the City's youth sports groups. Mr. Cune noted that many of those youth sports groups who were contacted did not show up due to conflicts. Discussions ensued on ways to get those involved in youth sporting teams to participate in the survey.

Commissioner Rogers asked about the number of people surveyed who currently use the facilities. Mayor Seiler noted the number of constituents 55 and over is growing. Discussions ensued on the priorities and needs of the City's Parks.

City Manager Feldman acknowledged that the greatest need exists for youth sports program. Chair Eisinger concurred with Mayor Seiler that there is a greater need for a sports fields for youth sports. Ms. Eisinger also noted there are an increased number of younger families with children who have relocated to the eastern area of the City and Mayor Seiler agreed. Mr. Webb noted transformational youth sports programs would require the City acquiring more land. Additional aspects of the survey were also discussed.

Mr. Webb discussed the percentage of City residents who have the perception that they feel unsafe in the City's parks. Commissioner Rogers questioned the reasons for this and the discussions cited issues such as lighting, activation, loitering, location, traffic, lack of parking as well as other issues. Mr. Webb noted these safety issues require drilling down into the specific Park locations to determine the exact reasons for safety concerns in those City Parks.

It was again noted by the Commission that youth sports were not in the top ten needs assessment of the study. Commissioner Rogers suggested that Small Neighborhood Parks in the Needs Assessment Summary (page 14 of the presentation) most likely correlates to the youth sports needs of the City.

Chair Eisinger noted there are many different age groups of youth sports. Mayor Seiler expressed his dismay at the lack of youth sports in the survey. Mr. Cune stated youth participation in youth sports has declined in the City. Mayor Seiler stated this is due to their having to go out of the City to find available fields for youth sports reiterating this is his number one issue.

Mr. Webb confirmed there is a need for more fields for youth sports and would require funding of \$24,000,000. Commissioner McKinzie raised the issue of the importance of the small Parks already existing in areas of the City.

Mr. Webb noted it takes a concentrated effort to acquire park property to address the need for youth sports fields. The amount of land currently available for youth sports fields was discussed noting the unincorporated land in the Windgate area is available for this purpose. It was suggested possibly using the property located outside of the City on Dixie Highway next to the hospital. Mayor Seiler stated it is located in the City of Oakland Park. The question was asked if the City could venture with the City Oakland Park to service the Northeast Broward area. Comments and discussions ensued on the tangible aspects of using this area.

Mayor Seiler stated there are areas near the Executive Airport that could also be used for field space for youth sports.

Mayor Seiler discussed working with the Broward County School Board to work with schools to utilize their fields. City Manager Feldman stated the latest update from the School Board was that it is up to each school principal. It was noted that some schools were more accommodating than others, but it is at the discretion of the principals. Mayor Seiler noted that in his efforts while in the legislature, the schools did not want to be forced to hold youth sporting events on their property.

City Manager Feldman noted his discussions with the School Board about selling or leasing the area of land near Edgewood. However, he stated no response was received and no reciprocity exists with the Broward County School Board.

Discussions ensued about the Arthur Ashe Field as a potential site in addition to Edgewood. Commissioner McKinzie noted the director of the Arthur Ashe School is very community oriented and would likely work with the City. Mayor Seiler stated the City might be able to share the field space at this location without having to purchase it.

Mayor Seiler stated the current programs at the Arthur Ashe School are all adult. Commissioner McKinzie said a piece of land in this area near the field is for sale. Mayor Seiler asked Commissioner McKinzie to take the lead to work with the Director of the Arthur Ashe School to see if this area could accommodate the City's youth sports.

Vice Mayor Trantalis recommended having a meeting with Robert W. Runcie, Superintendent of Broward County Public Schools. Mayor Seiler confirmed there would be a meeting in the form of a Joint Workshop with the Broward County School Board in December 2016. Chair Eisinger suggested including Heather P. Brinkworth, School Board Member from District III, in the upcoming meeting and Mayor Seiler confirmed Ms. Brinkworth would be in attendance.

Chair Eisinger commented that Cooper City had both success and excellent cooperation from the Broward County School Board in using school facilities. Discussions continued on the lack of cooperation from the Broward County School Board regarding using their facilities for activities with the City's Parks. Mayor Seiler requested City Manager Feldman add this item to the meeting agenda for the December 2016 Joint Workshop with the Broward County School Board.

Mr. Webb continued the presentations focusing on Community Health

and Safety at Carter Park. Commissioner McKinzie commented on the pedestrian access gates in Carter Park, noting they should be locked at 9:00 p.m. (page 9). Mayor Seiler and Chair Eisinger pointed out that Carter Park is one of the most utilized Parks in the City during the mornings and Commissioner McKinzie concurred.

The next portion of the presentation discussed the expanding the integration of public art in the City's Parks and open public spaces. Sustainability and Resiliency of the City's Public Parks followed, and Mr. Webb outlined and the presentation's recommendations in this area. The attendees gave their input on this aspect of the survey and the opportunities to address these issues.

The future cost estimates and the City's Parks and Recreation Department revenues were discussed in the presentation. Vice Mayor Trantalis asked how these estimates were determined. Mr. Webb explained how these amounts were determined stating they are realistic numbers for purchasing additional land. Mr. Cune said there were over 2,000 projects included in the cost estimate totaling \$175,000,716. This amount touches every existing park in addition to the acquisition of future parks. Discussions continued on the projected cost estimates, and the future projection of the 10-year timeframe of parkland acquisition is approximately 100 acres.

City Manager Feldman noted that there are no County Parks located within the City despite the fact that the City contributes collectively more to the County Park system. City Manager Feldman noted it would not be out of line in the future for the City to request the County to look at revenue sharing to provide recreational facilities in the City. Commissioner Rogers and Chair Eisinger discussed the feasibility of this idea and the need for an advocate for the City on the Broward County Commission.

Mayor Seiler noted that the County had contributed funds to the City's Mills Pond Park Project in the past. The dialogue continued on the circumstances surrounding the County's contribution. Mr. Thornburg confirmed that the wetlands located on the North side of Mills Pond Park and the entrance are areas that belong to Broward County. Mayor Seiler noted that the City could not build on those areas of the park. City Manager Feldman stated the City and the County are participating together to put a boardwalk over the wetlands portion of the Park.

Chair Eisinger noted the willingness of households to contribute on a monthly basis towards funding improvements to Parks and Recreation facilities. The dialogue continued on the survey's results for the top five

actions the public would most likely support to fund with tax dollars. Vice Mayor Trantalis asked for more detail relating to the upgrading of existing beaches. Mr. Webb responded that details relating to the City's beaches included access, parking, and beach renourishment.

The presentation continued with the capital funding projects, department funding, and the recommended phasing plan, and Mr. Webb noted these were large numbers. Vice Mayor Trantalis asked Mr. Webb for confirmation that, though the citizens believe that the City's Parks are well maintained, there exists \$50,000,000 in deferred maintenance in capital reinvestment in the City's Parks which will not go away. Mr. Webb stated the survey indicated the City's Parks are well maintained and clean. Commissioner Rogers asked if the City's cemeteries were included in the study. Mr. Webb reported that they were not. Mr. Webb continued his review of the survey's action items as noted in the presentation.

Mr. Webb commented on the City using the latest available technology for the Parks Department to communicate to the public. Mayor Seiler said that the City's Parks Program is outstanding with its communications to the public noting the many compliments he receives along with the requests from the public about the need for more field space.

Commissioner Rogers noted previous conversations with Mr. Thornburg about developing an application that the public could easily access to find out what field space is available along with the ability to reserve it electronically. Comments and dialogue continued on the feasibility of this idea.

Commissioner Rogers noted a negative he has heard was that when residents want to use a park's field space, they were not allowed on the field. Chair Eisinger suggested having free field space listed on a social application for the public, specifically indicating the area near the Parker Playhouse that available at any time.

Karen Polivka, Board Member, asked if the City encourages the availability of park space for pickup games and activities or if park space is maximized with organized sports. Commissioner McKinzie commented on his experiences in these situations and the value in advising the public on what is and what is not available along with information as to how the public can reserve park space.

Mr. Webb concluded his presentation with recommended action items including acquisitions, policies, and initiatives in numerous areas as noted in the presentation.

Vice Mayor Trantalis thanked Mr. Webb for the study's presentation stating it is a useful tool.

Chair Eisinger thanked the City Commission for having this joint workshop noting the Board had good participation in their monthly meeting and it was unfortunate that they were not available for this Joint Workshop due to scheduling conflicts. Chair Eisinger requested updates to this presentation to be discussed at the Board's monthly meetings in order offer their input. She reiterated the importance of youth sports and the lack of field space stating she is in agreement with the Commission.

Chair Eisinger noted the importance of the public having access to fields, recognizing there is no down time on the fields to address safety concerns. Commissioner Rogers said, though expensive, Astroturf is the way to move forward in the long term to address safety concerns as it would negate the need for the fields requiring downtime. Chair Eisinger noted good discussions the Board has had regarding the different types and recommendations for Astroturf. Mayor Seiler commented on the huge success story of Carter Park's field and the possibility of marketing, sponsoring, and branding of City Parks to assist with field area upgrades. Chair Eisinger concurred with Mayor Seiler's comments, and examples were noted.

Mr. Thornburg said the City is redoing the fields a Mills Pond Park. Mayor Seiler noted both Mills Pond Park and Carter Park are consistently busy. However, he noted Holiday Park, because it does not have turf, requires downtime. Mayor Seiler pointed the need to focus on each school within the City in order to work together to add four sports fields.

Commissioner Rogers noted that previously there had been objections by the City's Parks and Recreation and Beaches Board for placement of a fire station at Mills Pond Park due to the fact it would take up park space. Chair Eisinger noted that this was before her membership on the Board. Commissioner Rogers discussed Fire Station No. 8 (Fire Station) that is slated to go just South of 17th Street East of railroad tracks on land owned by the City. He suggested the Board consider putting this Fire Station at the corner of Hardee Park noting it would take up the bocce ball courts and the pump house on the Northwest corner. Mayor Seiler recalled that the Tarpon River Homeowners Association did not want the fire station at this location, and dialogue on this topic continued.

Chair Eisinger raised the issue of pursuing public/private partnerships

and asked if there is a listing within the City that the Board could review for the opportunity to participate in a partnership or a naming. Mayor Seiler discussed an example of a previous donation by the Stiles Corporation. Vice Mayor Trantalis stated the City does not have a program set up for this and he has been requesting this for several years. Chair Eisinger concurred that this type of program is necessary. City Manager Feldman noted the City has gone out with a Request for Proposal (RFP) for a public relations firm to pursue this goal and thus far the City has received one response. Chair Eisinger stated this expense would be recovered in the long run noting many opportunities exist in the City for this type of programming.

Mayor Seiler asked City Manager Feldman the next steps for following up on this study. City Manager Feldman stated the Commission has officially received it. Mayor Seiler said he would like to prioritize ball fields ahead of all other recommendations because it impacts the largest number of people. Chair Eisinger concurred with Mayor Seiler.

Commissioner Rogers asked if the \$1,000,000 allocated to the Nova site was still available. City Manager Feldman explained that this money was used for Mills Pond Park and Mr. Black's property. He also noted nothing was designated for the Nova site as the lease was extended for five years. City Manager Feldman continued his comments on funding the needs of the City's Parks and Recreation Department and recommended perhaps utilizing a bond as done in the past. Commissioner Roberts noted that there are several significant funding needs in addition to the City's Parks and Police Department including infrastructure needs of the City. Commissioner Roberts pointed out the need for the City to have the plan to address these significant funding requirements and to prioritize those needs and find sources of financing. Discussions continued on the funding of the City's needs in these areas.

Chair Eisinger noted the success of a previous program in Cooper City called Cops and Kids which included the development of both a new police station and a new park for children that were bundled together for a bond that was overwhelmingly approved.

Mayor Seiler asked City Manager Feldman to bring this study back to the City Commission for further discussions and recommendations.

ADJOURNMENT

Mayor Seiler adjourned the Workshop at 1:55 p.m.



PARKS AND RECREATION SYSTEM MASTER PLAN COMMISSION CONFERENCE MEETING

'Develop a comprehensive parks system master plan to serve as a guide for the planning, acquisition, development and operations of parks and recreation programs and facilities, that also advances the Press Play and Fast Forward planning efforts completed by the City of Fort Lauderdale'



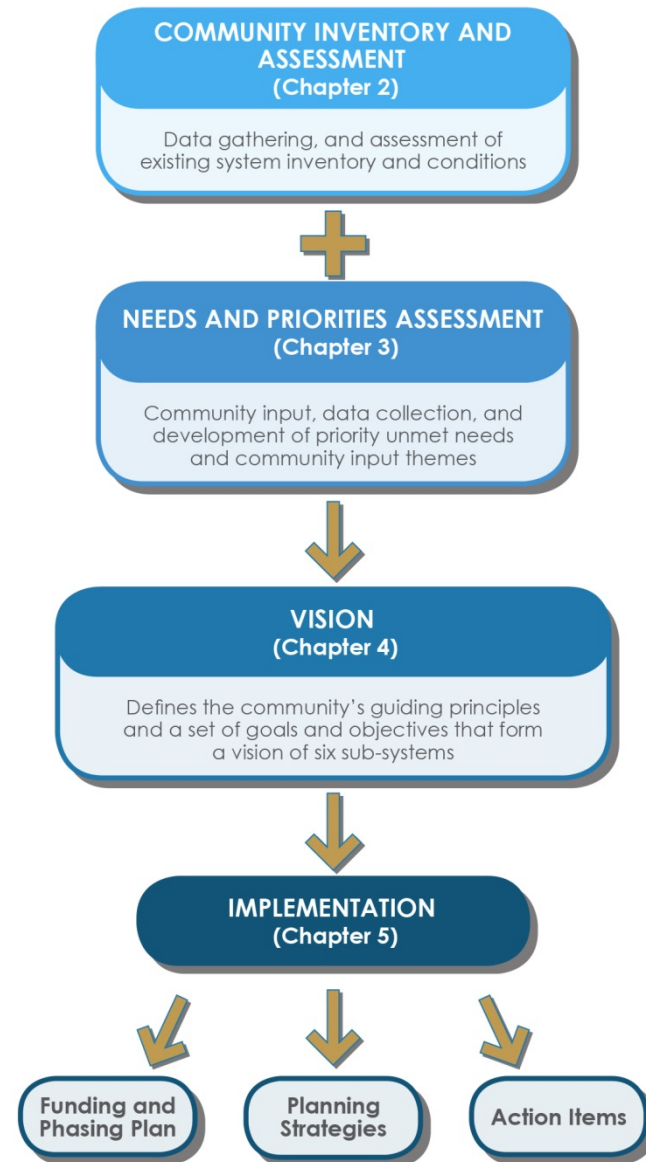


AGENDA

1 OVERVIEW

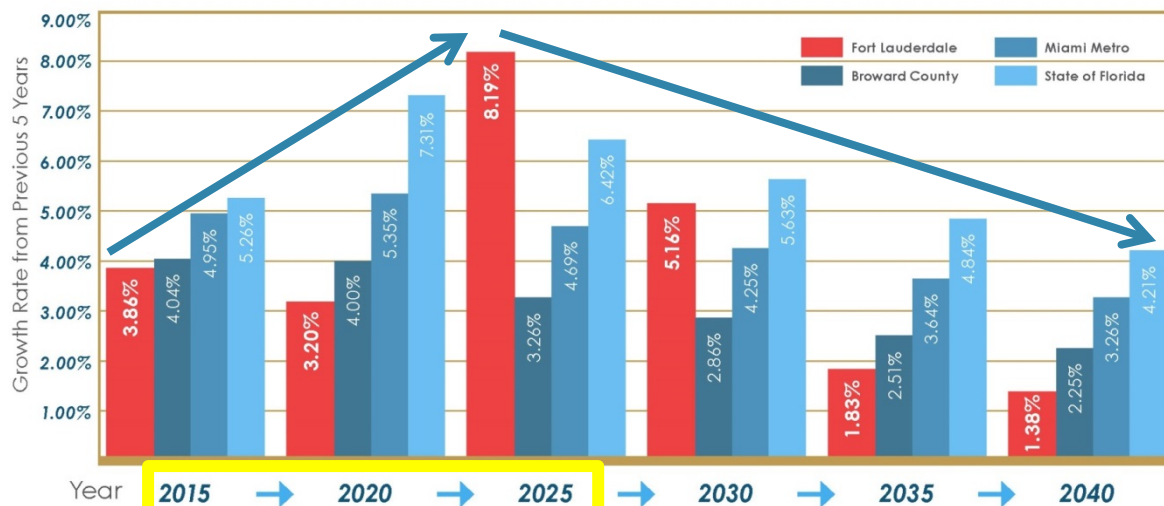
- RESEARCH AND ANALYSIS
- NEEDS AND PRIORITIES
- FUTURE VISION
- IMPLEMENTATION

2 RECOMMENDATIONS



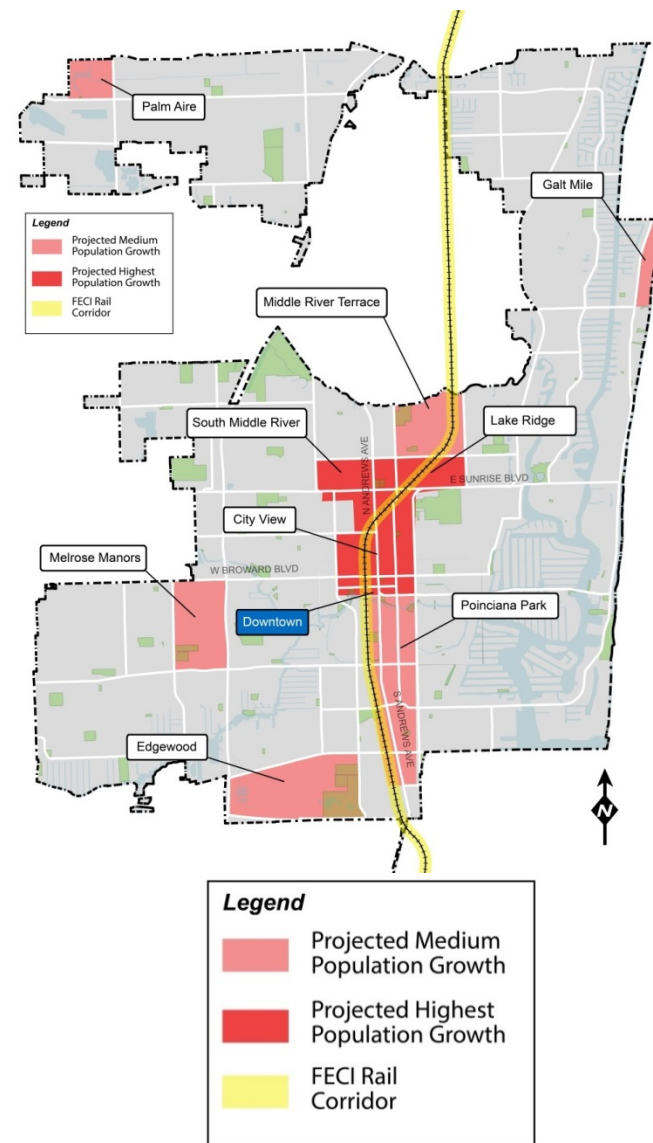
PLANNING FOR GROWTH

- Increase of 5,500+ people in the next 5 years
- Additional 24,400+ people between 2020 and 2030
- The highest concentration of growth projected north of downtown along FECI Rail Corridor
- Largest population increase: Ages 55-64 (+ 4.3%)



Focus Period for Master Plan

DEMOGRAPHICS





COMMUNITY INVENTORY AND ASSESSMENT

SYSTEM WIDE SUCCESSES

- High level of maintenance prevalent in most parks, with most making a good impression to visitors;
- Most sites are accessible, clean and free of litter, with a majority providing a feeling of perceived safety

SYSTEM WIDE OPPORTUNITIES

- Improvements to wayfinding, signage, design standards and overall accessibility;
- Improvement in environmental sustainability, enhancement of environmental awareness and education, and increasing access to ecological features;

System-wide Ratings

100 - 75 Exceeding Expectations
74 - 50 Meeting Expectations
49 - 50 Not Meeting Expectations

Design and Construction

75

Effectiveness

68

Comfort and Image

80

Condition

77

Access and Linkages

69

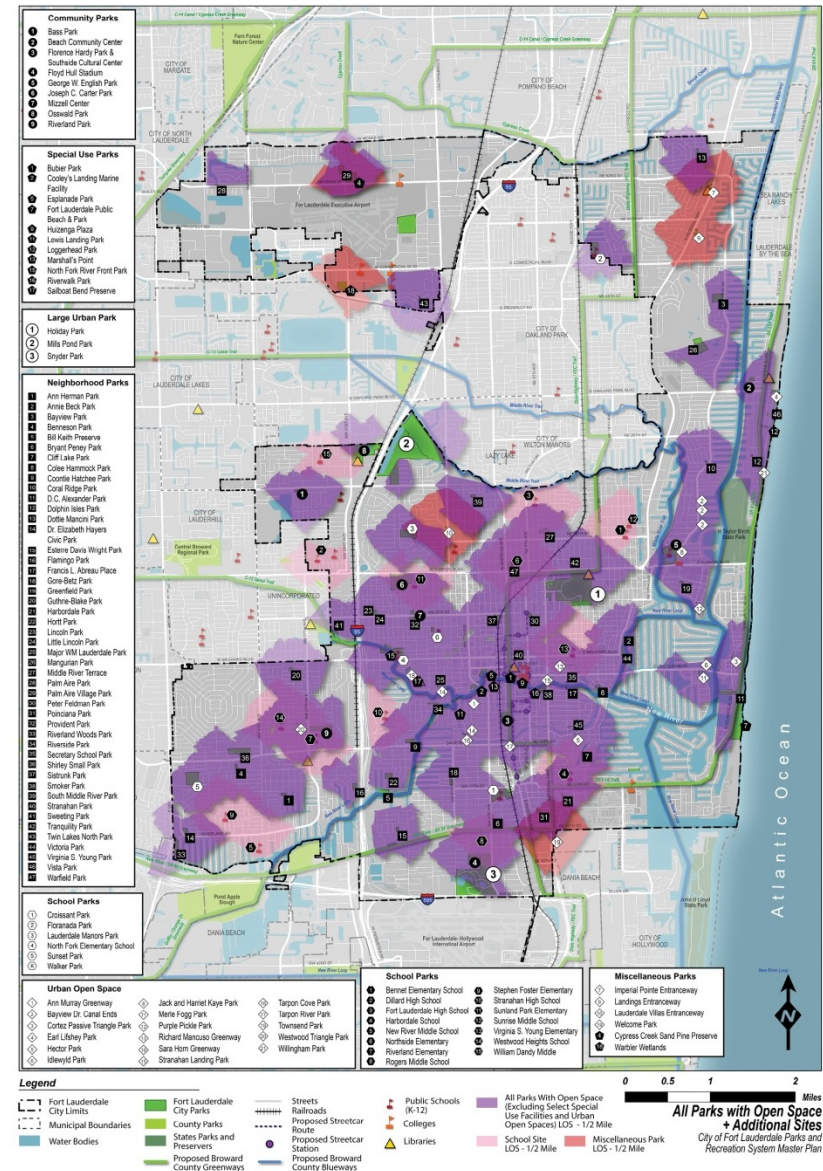
Sustainability

66



LEVEL OF SERVICE - ACCESS

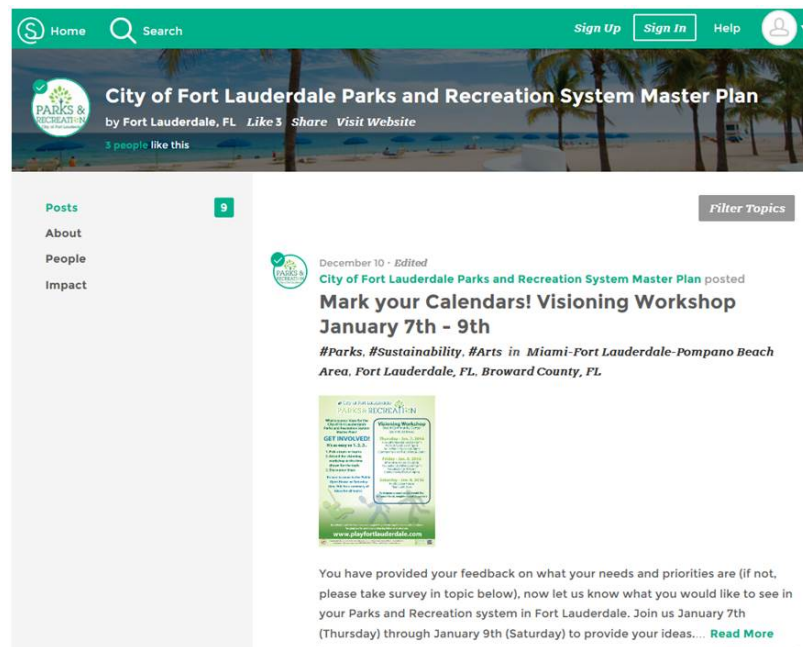
Combination of existing park sites and school sites with agreements for public use.



TECHNIQUES

- Community Meetings
(124 participants)
- Focus Groups (10 groups)
- Stakeholder Interviews
 - Elected officials, DDA, Riverwalk, BCPSS, PRB Advisory Board
- Online Public Opinion Survey
- Statistically Valid Survey
(852 completed surveys)

PUBLIC INVOLVEMENT



PUBLIC INVOLVEMENT RESULTS

COMMON THEMES

- Promote **health and fitness**
- **Activate** park spaces more
- Increase availability of **athletic fields**
- Utilize **Downtown** and the **Riverwalk** resources more
- Develop more strategic **partnerships**
- **Provide more small parks** and open spaces in residential areas
- **Enhance connectivity** and walkability
- Provide more programs for **youth and seniors**
- Increase opportunities for **public art**
- **Improve Communication** between residents and department
- **Upgrade** existing facilities
- Improve **safety and security**

ONLINE SURVEY

MAIL / TELEPHONE SURVEY

SURVEYS

- Link posted at www.playfortlauderdale.com
- Used to compare results to statistically valid survey

PARKS & RECREATION
City of Fort Lauderdale

Fort Lauderdale Parks and Recreation System Master Plan Survey

22%

1. Which one of the following options best describes you?

☐ Live in the City of Fort Lauderdale ☐ Live and Work in the City of Fort Lauderdale

☐ Work in the City of Fort Lauderdale ☐ Live and Work outside the City of Fort Lauderdale

2. Do you live in a Single-Family Detached or Attached (i.e. townhouse, apartment building, condo) house?

☐ Single Family ☐ Multi-Family

3. Which City Commission District do you or your family live in?

☐ District 1 ☐ District 3 ☐ I am not a resident of Fort Lauderdale

☐ District 2 ☐ District 4

4. Do you or your family speak a language other than English at home?

☐ YES

- Statistically Valid
 - 95% level of Confidence
 - +/- 3.3% margin of error
- 4 zones plus city-wide results
- Mailed to 4,000 households
- Responses completed by mail/ phone/ website
- Directions in English and Spanish and Creole
- Random / stratified to match each sample zone's demographics
- Geocoded

Community Interest and Opinion Survey: Let your voice be heard today!

The City of Fort Lauderdale would like your input to help determine park and recreation priorities for our community. This survey will take 10-15 minutes to complete. When you are finished, please return your survey in the enclosed postage-paid, return-style envelope. We appreciate your time.

Quality of Parks and Facilities

1. Please indicate if you use the following major parks and recreation facility types provided by the City of Ft. Lauderdale. Parks and Recreation Department by circling the 1, 2, 3, 4 or 50 next to each of the types of parks and recreation facilities. If you do use the type of facility, please rate your overall satisfaction on a scale of 1 to 4 where 1 means "Very Satisfied" and 4 means "Very Dissatisfied."

How satisfied are you with the following City of Ft. Lauderdale parks and recreation services/facilities:

	Yes	No	Satisfied	Dissatisfied	Unsatisfied/ Dissatisfied
(A) Overall quality of beaches	Yes	No	4	3	2
(B) Overall quality of large community parks	Yes	No	4	3	2
(C) Overall quality of small neighborhood parks	Yes	No	4	3	2
(D) Overall quality of soccer fields	Yes	No	4	3	2
(E) Overall quality of youth baseball/softball fields	Yes	No	4	3	2
(F) Overall quality of football fields	Yes	No	4	3	2
(G) Overall quality of adult softball fields	Yes	No	4	3	2
(H) Overall quality of indoor community centers	Yes	No	4	3	2
(I) Overall quality of outdoor swimming pools	Yes	No	4	3	2
(J) Overall quality of City Marina (Coley's Landing)	Yes	No	4	3	2
(K) Overall quality of tennis centers	Yes	No	4	3	2
(L) Overall quality of splash pads	Yes	No	4	3	2
(M) Overall quality of Ft. Lauderdale Aquatic Complex	Yes	No	4	3	2
(N) Overall quality of dog parks	Yes	No	4	3	2

2. Which THREE of those parks and recreation facilities do you think should receive the MOST ATTENTION from the City of Ft. Lauderdale over the next 10 years? [Please indicate your 1st, 2nd, and 3rd choices by writing the letters from Question #1 above in the spaces below.]

1st _____ 2nd _____ 3rd _____

3. How would you rate the overall quality of the City of Fort Lauderdale parks and recreation areas listed above in question #1 that you and members of your household have used during the past 12 months?

(1) Excellent (2) Good (3) Fair (4) Poor (5) Don't know any City parks or recreation areas

4. What days and times do you most frequently use parks facilities and programs? (Check all that apply.)

(1) Weekday morning (2) Weekday evening (3) Weekend daytime (4) Weekend evening

If YES, please Fort Lauderdale Meet Needs?

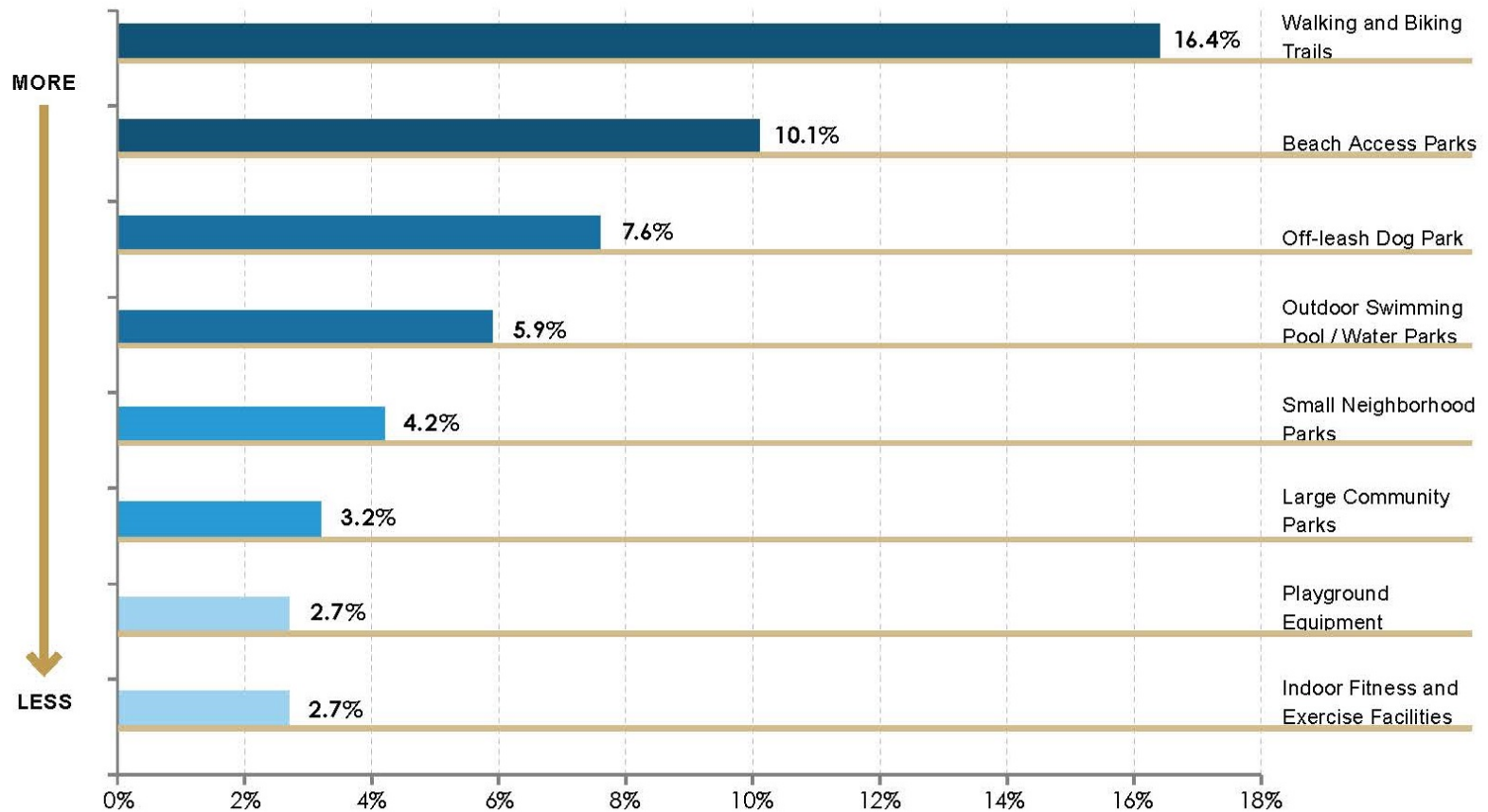
Type of Facility	Do You Have a Need for this Facility?		IF YES, How Much? How Well Are Your Needs Being Met?				
	Yes	No	100% Met	75% Met	50% Met	25% Met	0% Met
A. Soccer fields	Yes	No	5	4	3	2	1
B. Youth baseball and softball fields	Yes	No	5	4	3	2	1
C. Football fields	Yes	No	5	4	3	2	1
D. Outdoor tennis courts	Yes	No	5	4	3	2	1
E. Outdoor cricket fields	Yes	No	5	4	3	2	1
F. Adult softball fields	Yes	No	5	4	3	2	1
G. Off-leash dog park	Yes	No	5	4	3	2	1
H. Outdoor swimming pools/water parks	Yes	No	5	4	3	2	1
I. Playground equipment	Yes	No	5	4	3	2	1
J. Outdoor basketball courts	Yes	No	5	4	3	2	1
K. Disc golf	Yes	No	5	4	3	2	1
L. Skateboarding park	Yes	No	5	4	3	2	1
M. Walking and biking trails	Yes	No	5	4	3	2	1
N. Nature center and trails	Yes	No	5	4	3	2	1
O. Small neighborhood parks	Yes	No	5	4	3	2	1
P. Large assembly parks	Yes	No	5	4	3	2	1
Q. Beach access paths	Yes	No	5	4	3	2	1
R. Canoe, kayak, and small boat rentals	Yes	No	5	4	3	2	1
S. Outdoor amphitheaters/auditoriums	Yes	No	5	4	3	2	1
T. Indoor swimming/walking trails	Yes	No	5	4	3	2	1
U. Indoor swimming pools/lap pool	Yes	No	5	4	3	2	1
V. Indoor tennis courts	Yes	No	5	4	3	2	1
W. Indoor fitness and exercise facilities	Yes	No	5	4	3	2	1
X. Indoor basketball/volleyball courts	Yes	No	5	4	3	2	1
Y. Other	Yes	No	5	4	3	2	1

11. Which FOUR of the facilities from the list in Question #10 are MOST IMPORTANT to your household? [Using the letters in the left hand column of Question #10 above, please write in the letters below for your 1st, 2nd, 3rd, and 4th choices, or circle "NONE".]

1st _____ 2nd _____ 3rd _____ 4th _____ NONE

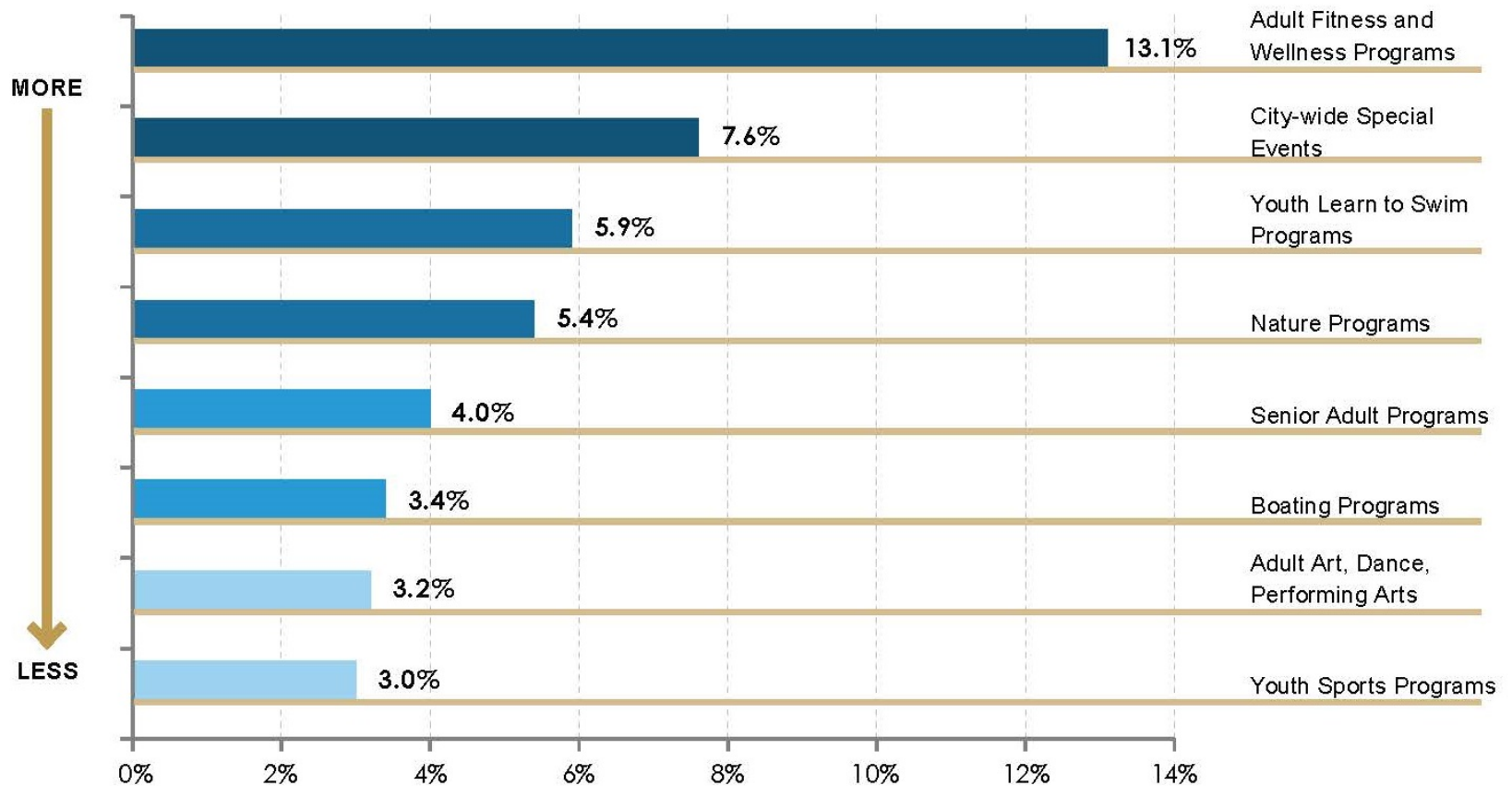
STATISTICAL SURVEY

TOP 8 MOST IMPORTANT PARK/RECREATION FACILITIES TO YOUR HOUSEHOLD?



STATISTICAL SURVEY

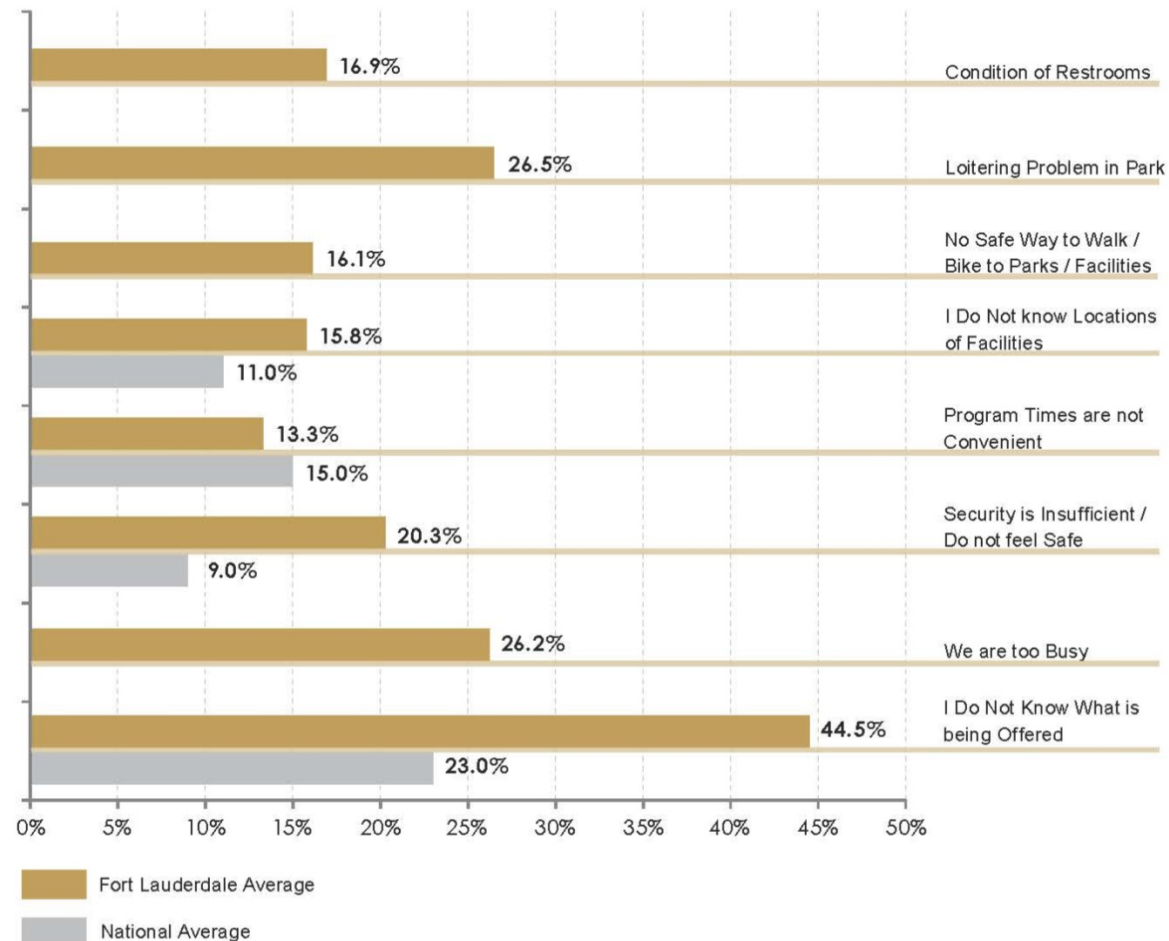
TOP 8 MOST IMPORTANT RECREATION PROGRAMS TO YOUR HOUSEHOLD?





STATISTICAL SURVEY

TOP 8 REASONS THAT PREVENT YOU OR MEMBERS OF YOUR HOUSEHOLD FROM USING PARKS OR PARTICIPATING MORE OFTEN.





District 3 Survey Results Analysis

Select Comparison to City-wide Responses

The following tables show survey questions where **District 3** responses differed significantly from city-wide responses:

District 1 Survey Results Analysis

Needs and Priorities Assessment

Select Comparison to City-wide Responses

The following tables show survey questions where **District 1** responses differed significantly from city-wide responses:

Chapter 3

District 2 Survey Results Analysis

District 2 was the only district below the city-wide average for "excellent" responses when asked to rate both facilities and programs. District 2 also has higher responses for walkers and bikers than any other district, however respondents indicated that having no safe way to walk/bike to facilities was a reason preventing park use. The top choice for actions funded with tax dollars in District 1 is "upgrade existing beaches", which is above the city-wide average.

Select Comparison to City-wide Responses

The following tables show survey questions where **District 12** responses differed significantly from city-wide responses:

Table 3-22: District 2 Importance / Unmet Needs Matrix for Park and Recreation Facilities



Table 3-23: District 2 Importance / Unmet Needs Matrix for Park and Recreation Programs



Table 3-26: District 4 Importance / Unmet Needs Matrix for Park and Recreation Facilities

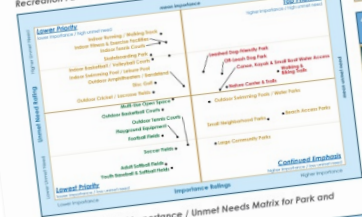


Table 3-27: District 4 Importance / Unmet Needs Matrix for Park and Recreation Programs



Table 3-32: Needs Assessment Summary

- = Indicates Highest Need
- = Indicates Need

		Needs Assessment Techniques									
		Community Inventory Assessment	Community Meetings	Focus Groups	Stakeholder Interviews	Comparables Analysis	On-line Public Opinion Survey	Citizen Opinion and Interest Survey	Acreage Level of Service Analysis	Facility Level of Service Analysis	Access Level of Service Analysis
Facilities	Small Neighborhood Parks	●	●	●	●	●	●	●	●	●	●
	Walking and Biking Trails	●	●	●	●	●	●	●			●
	Beach Parks	●	●		●	●	●	●		●	●
	Large Community Parks	●		●		●		●	●	●	●
	Nature Centers and Trails	●	●			●	●	●			●
	Outdoor Event Space	●	●	●		●		●			
	Water / Boat Access	●		●		●	●	●			
	Indoor Fitness & Exercise Facilities	●	●	●			●	●			
	Outdoor Swimming Pools / Water Parks		●				●	●			●
	Dog Parks	●	●		●			●			
Programs and Activities	Senior Adult Programs	●	●	●	●	●	●	●			
	Adult Fitness and Wellness	●	●	●	●	●	●	●			
	City-wide Special Events	●	●	●		●	●	●			
	Adult Sports Programs	●	●	●	●		●	●			
	Nature Programs	●				●	●	●			
	Adult Art, Dance, Performing Arts	●	●	●		●		●			
	Water Fitness Programs		●				●	●			
	Programs for Disabled	●	●	●			●	●			
	Boating Programs						●	●			
	Youth Art, Dance, Performing Arts	●		●		●		●			





Vision Subsystems

*For Management of a
Diverse System*



Parks & Facilities

- Equity and Access
- Meeting Growth
- Continued Enhancement of School Parks



Recreation & Athletics

- Access to Recreate
- Capacity



Community Health

- Health and Wellness
- Safety



Art in Public Spaces

- Diversity of Public Art
- Integration of Art into the Communities' Open Space Fabric



Sustainability & Resiliency

- Sustainability at the Park Level
- A Resilient System



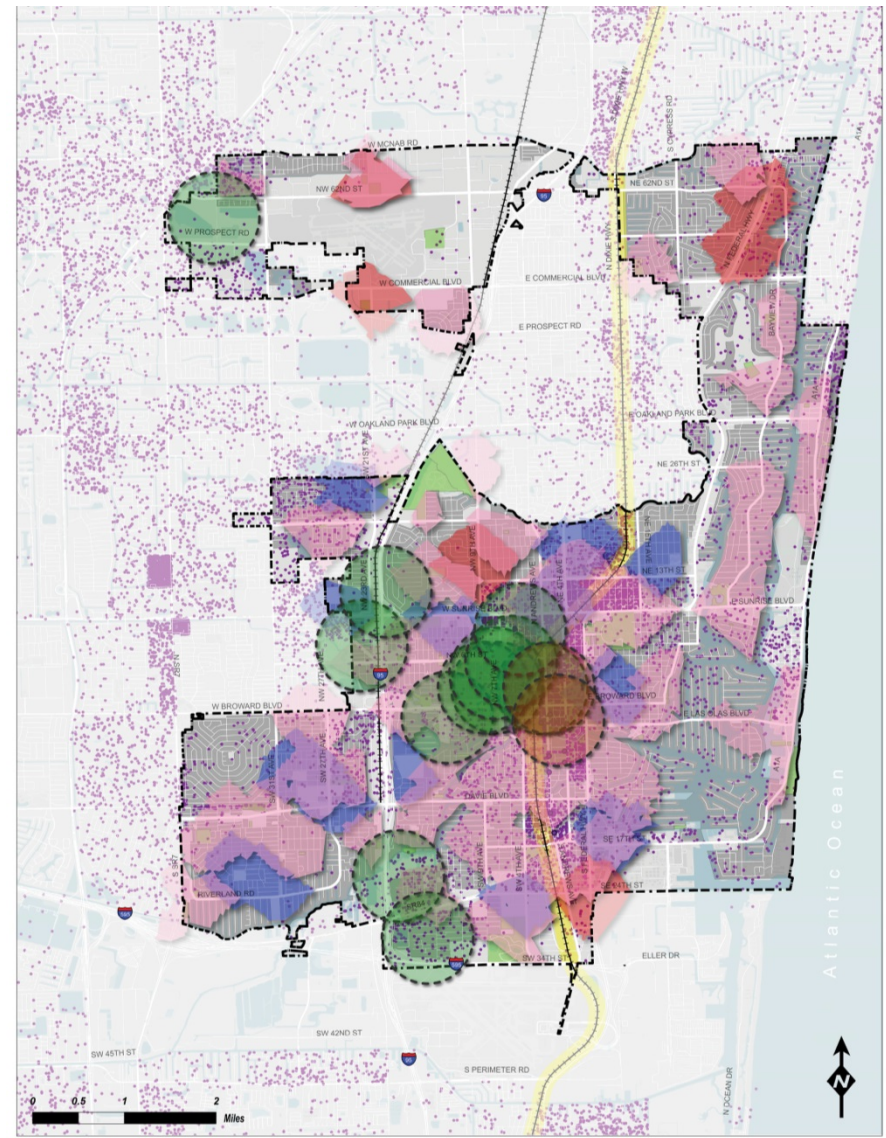
Connectivity

- Regional Connectivity
- Complete Streets
- Recreational Walking and Biking



PARKS AND FACILITIES

- Acquire park property to address service gap areas
- Targeted acquisitions in urbanizing areas
- Seek creative ways to develop addition recreation facilities on public property

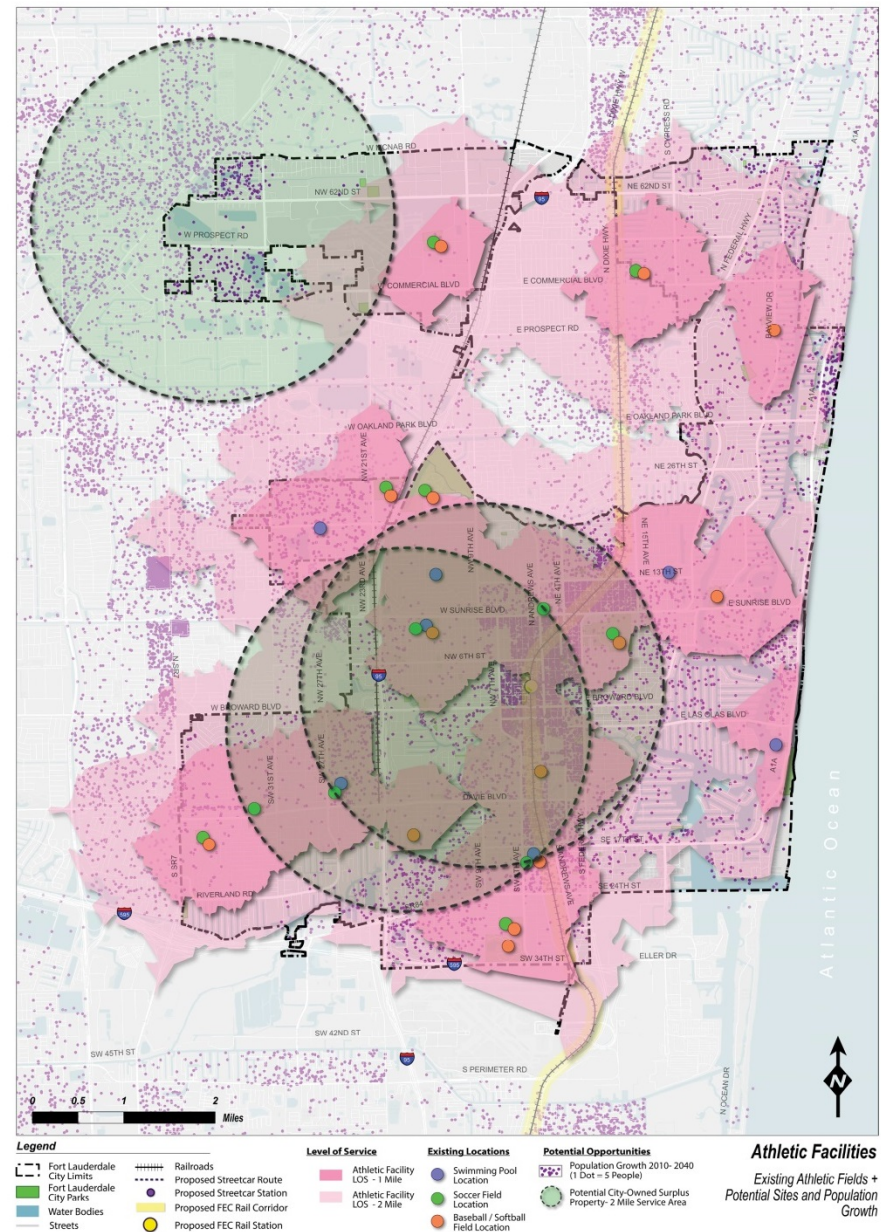


Parks and Facilities

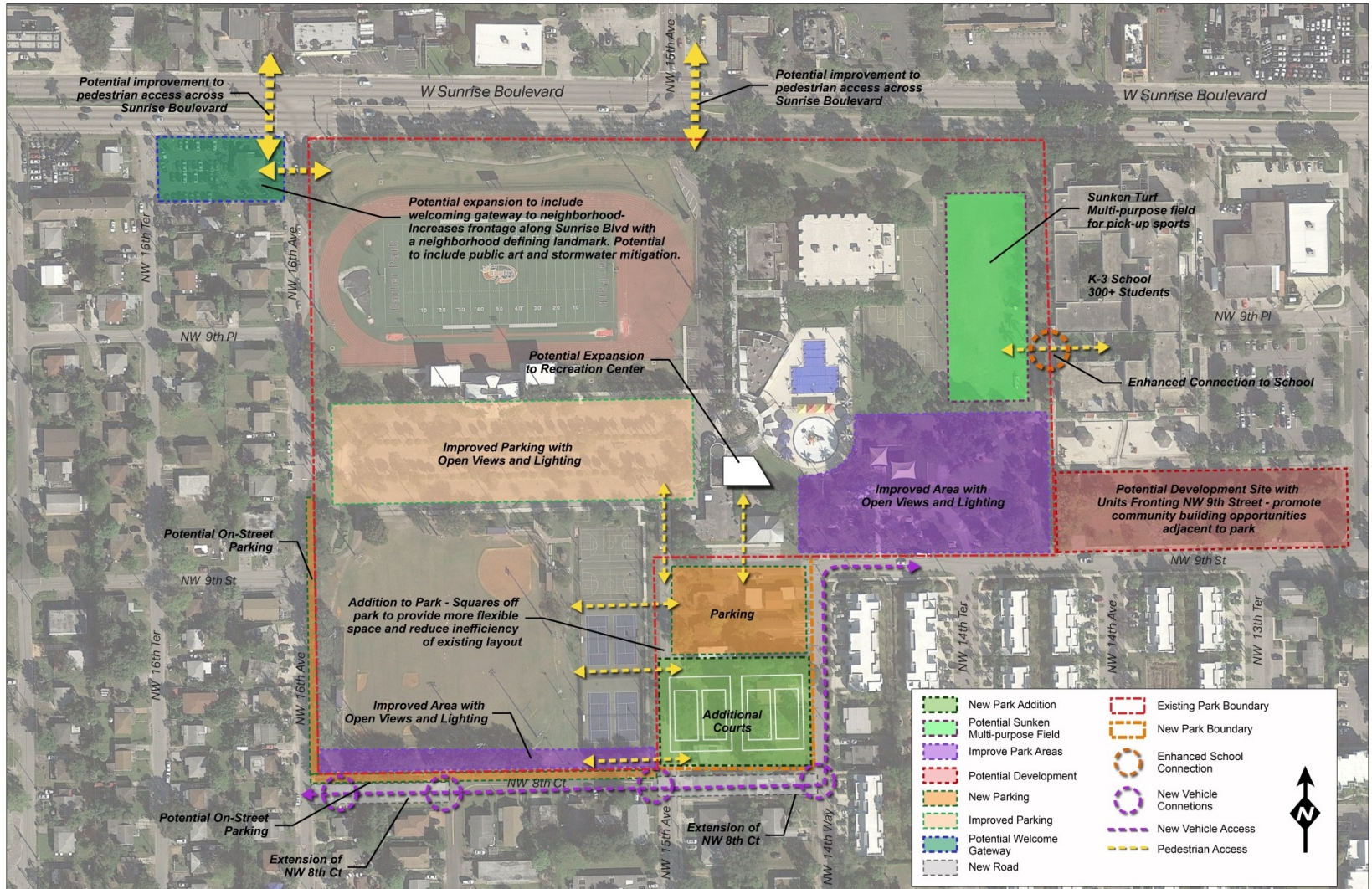
All Parks with Open Space + Residential Areas + Growth

RECREATION AND ATHLETICS

- Upgrade existing athletic and recreation facilities
- Address deferred maintenance needs
- Provide new facilities to address gaps in service and overuse



COMMUNITY HEALTH & SAFETY



Joseph Carter Park

ART IN PUBLIC PLACES

Expand the integration of public art in parks and public open spaces

Examples of Public Art in Fort Lauderdale Parks

Sculptures, Statues and Monuments

Bike Rack - Ann Herman Park



Sculpture - Esplanade Park



Native American Art - D.C. Alexander Park



Native American Monument - Lewis Landing Park



Architectural and Welcome Elements

Gates from Repurposed Materials - Harbordale Park



Architectural Structure - Peter Feldman Park

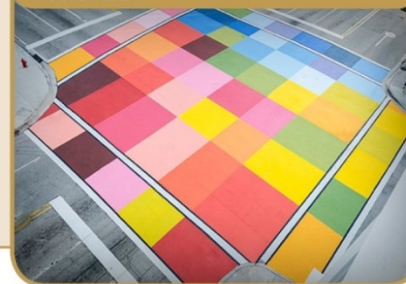


Murals and Pavement Paintings

Seat Wall Mural - Sistrunk Park



Painted Intersection on Las Olas Boulevard



Painted Book Exchange - Dottie Mancini Park



SUSTAINABILITY AND RESILIENCY

- Integrate sustainable strategies in all parks
- Utilize large athletic complexes for flood control
- Use parks to improve neighborhood drainage
- Incorporate storm water management practices in natural areas of parks to improve water quality and restore natural habitats

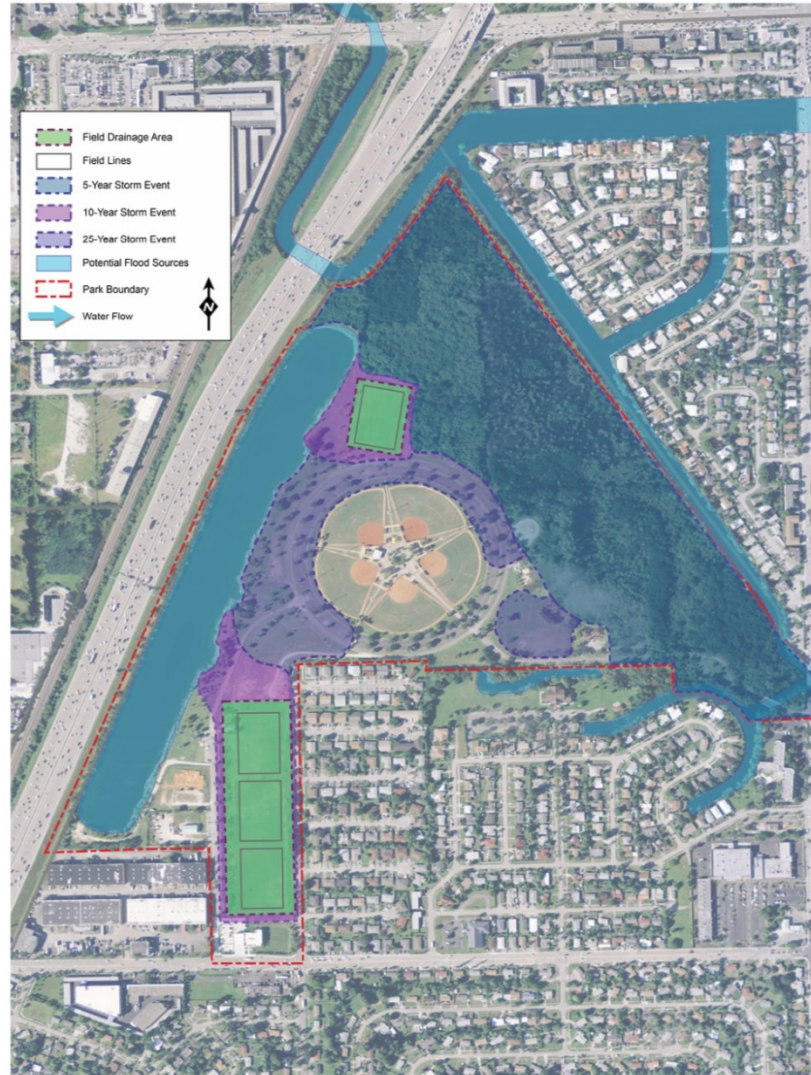


Figure 4-9: Typical Sunken Field Detention Basin

In flood events, water is directed into the sunken fields from multiple directions, transforming the field and its surrounding banks into a detention basin.



Water continues to fill the basin until the capacity is reached. In the case of Mills Pond Park, a series of fields can be treated as tiered basins, where one fills first and then overflows into the next if necessary. Note that the light post are encased concrete pillars.



Once the flood event is over and the basins are stabilized, the fields begin to drain the water, and are restored to their original state, with artificial turf ready for immediate play.



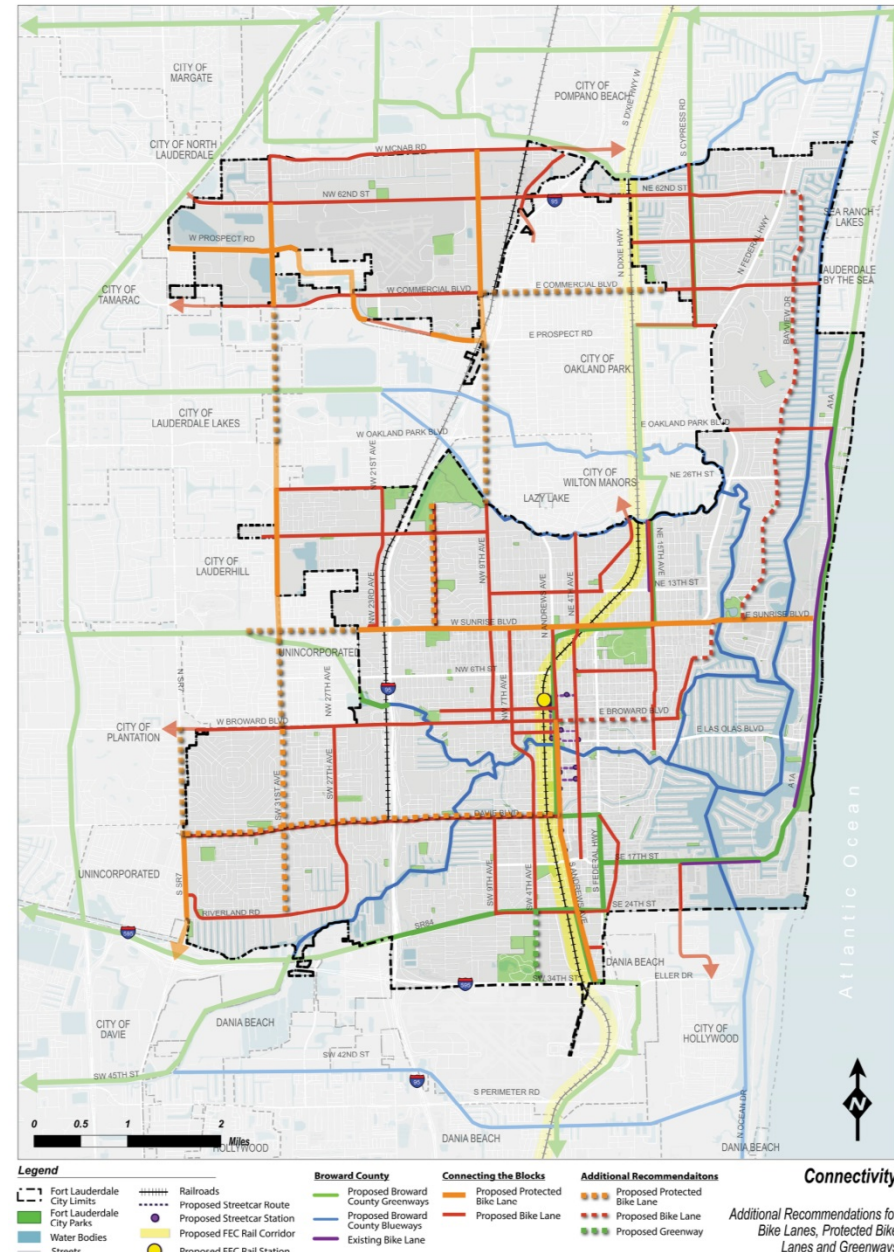
CONNECTIVITY

- Support Implementation of Planning Efforts:
 - Recommended Local Greenways and Bike Facilities
 - Connecting the Blocks Proposed Bike Lanes
 - Proposed Broward County Greenways and Blueways

Separated, Shared-Use Path, Indianapolis Cultural Trail



Bike Lanes on Seabreeze Boulevard in Fort Lauderdale



Here is what is included:

- **Parks and Facilities:** Improvements or additions to existing parks, acquisitions and development of new parks.
- **Recreation and Athletics:** Improvements to fields and courts at existing parks and facilities
- **Community Health:** Improvements to fitness and wellness facilities, indoor facilities or safety enhancements.
- **Art in Public Places:** New public art installations in parks, neighborhoods and gateways
- **Sustainability & Resiliency:** Project in or near parks that contribute to system-wide improvements or city-wide goals
- **Connectivity:** Improvements to ped/bike facilities for better and safer access to parks or on routes to parks and facilities.

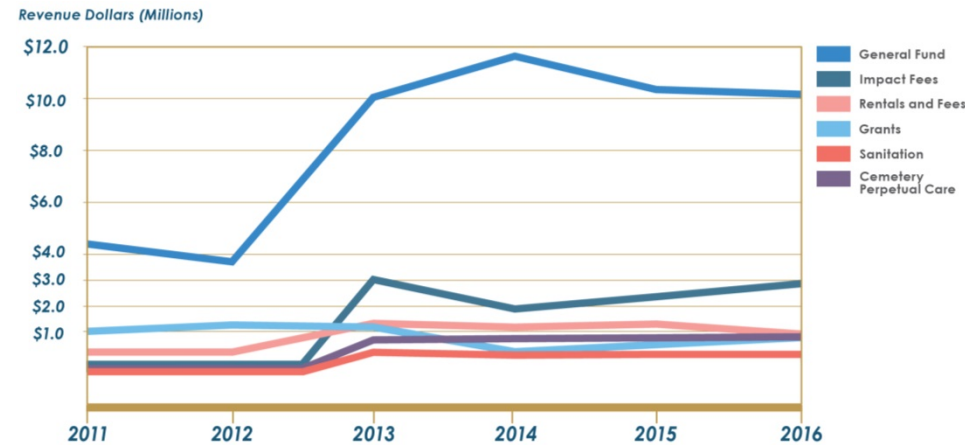
COST ESTIMATE BY VISION ELEMENTS

Vision Elements	
Parks and Facilities	\$131,568,185
Recreation and Athletics	\$11,141,033
Community Health (Including ADA Barrier Removal Plan)	\$16,660,630
Art in Public Places	\$1,100,000
Sustainability and Resiliency	\$8,008,448
Connectivity	\$7,521,420
Total	\$175,999,716



DEPARTMENT REVENUES

- Impact fees have contributed recently, but have been inconsistent source
- City has historically relied upon Broward County and State sources for majority of grant revenue
- Average annual grant revenue has decreased since 2012 peak in 2012



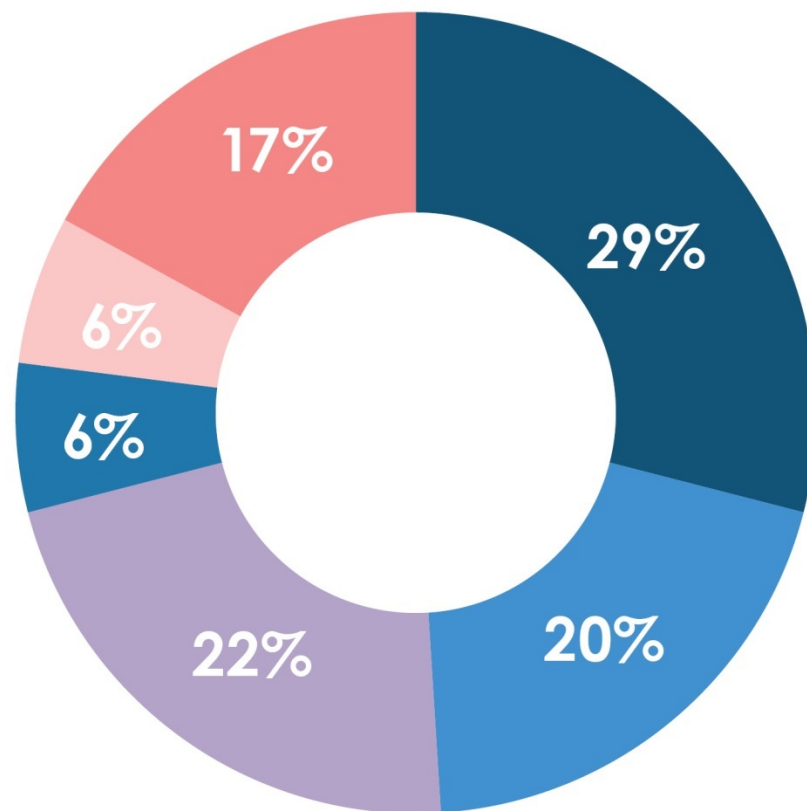
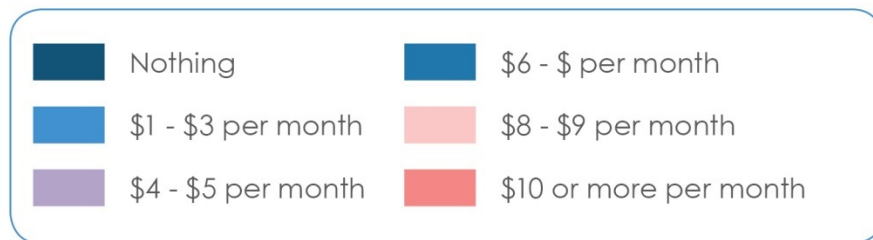
Revenue Source	2011	2012	2013	2014	2015	2016
General Fund (Revenues)	\$4,331,202	\$3,681,338	\$10,052,861	\$11,651,038	\$10,354,544	\$10,195,384
Cemetery Perpetual Care			\$728,192	\$776,911	\$813,244	\$851,772
Sanitation			\$258,620	\$138,802	\$170,364	\$170,364
Park Impact Fee			\$3,054,682	\$1,904,417	\$2,381,234	\$2,878,005
Special Events			\$145,000	\$147,765	\$187,709	\$155,000
Rentals	\$204,361	\$204,361	\$461,122	\$462,235	\$451,824	\$355,122
Program Fees/Pools			\$765,609	\$605,379	\$701,616	\$439,000
Grants	\$1,056,900	\$1,308,306	\$1,222,441	\$226,000	\$524,966	\$713,616



WILLINGNESS TO PAY

'Additional amount households are willing to pay per month to fund improvements to parks and recreation facilities'

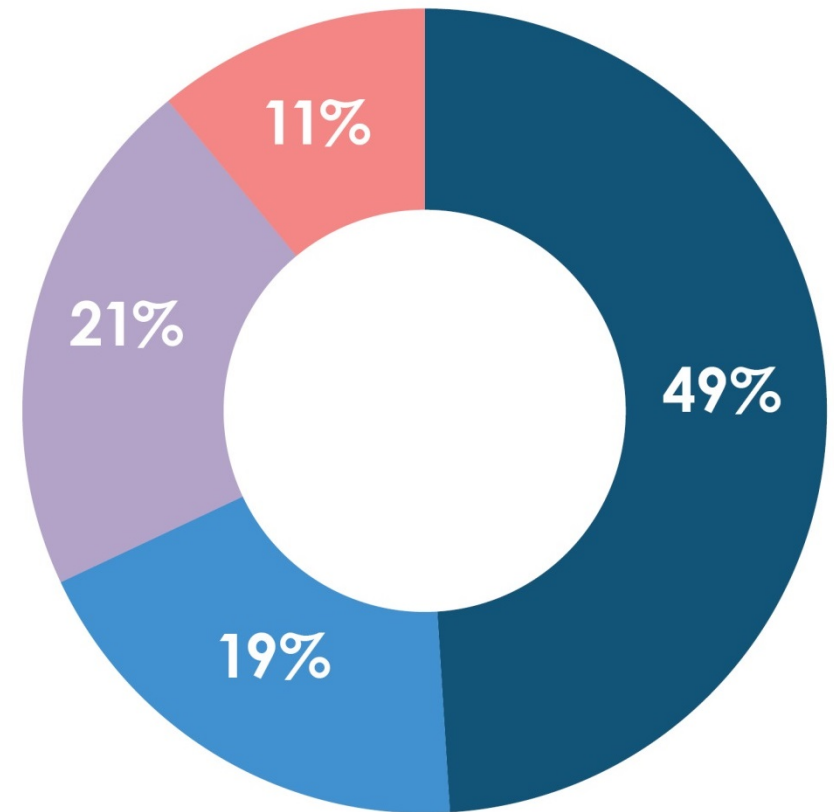
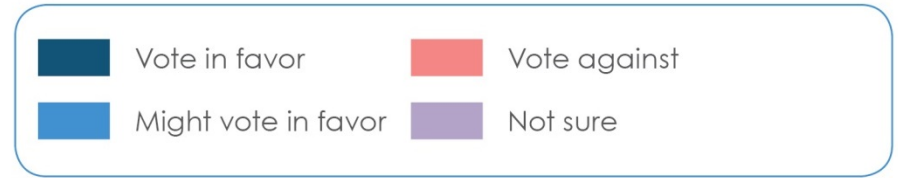
71% of households are willing to pay at least *some amount* to fund improvements



WILLINGNESS TO PAY

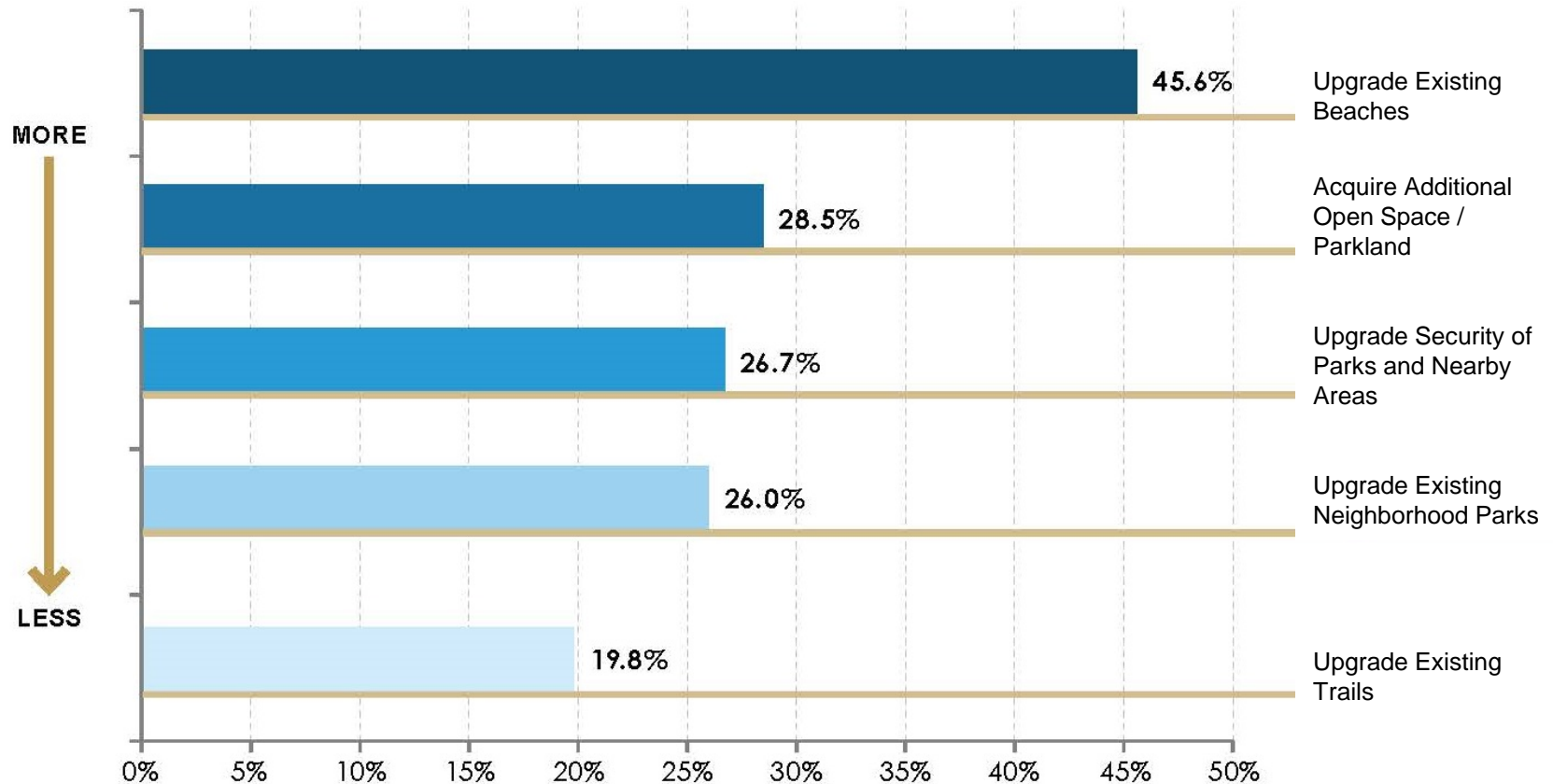
'How households would vote if a voter election was held to improve and develop parks and recreation facilities'

Only 11% of households indicated that they would vote against improvements to parks and recreation facilities



STATISTICAL SURVEY

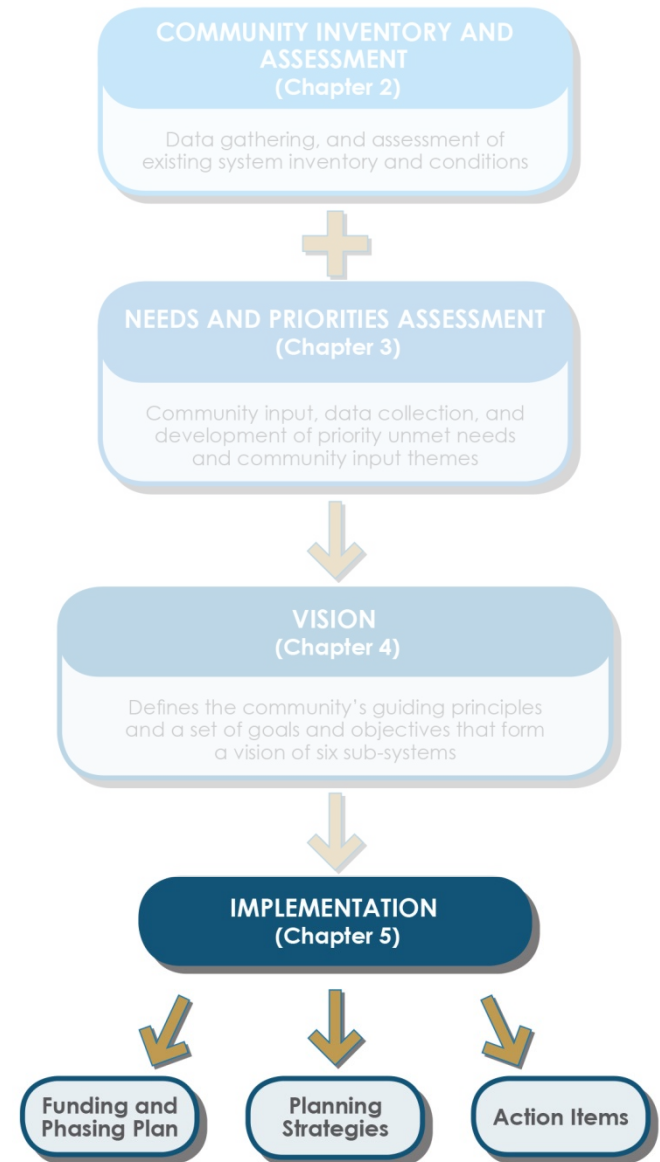
TOP 5 ACTIONS YOU WOULD MOST LIKELY SUPPORT TO FUND WITH TAX DOLLARS.



1 OVERVIEW

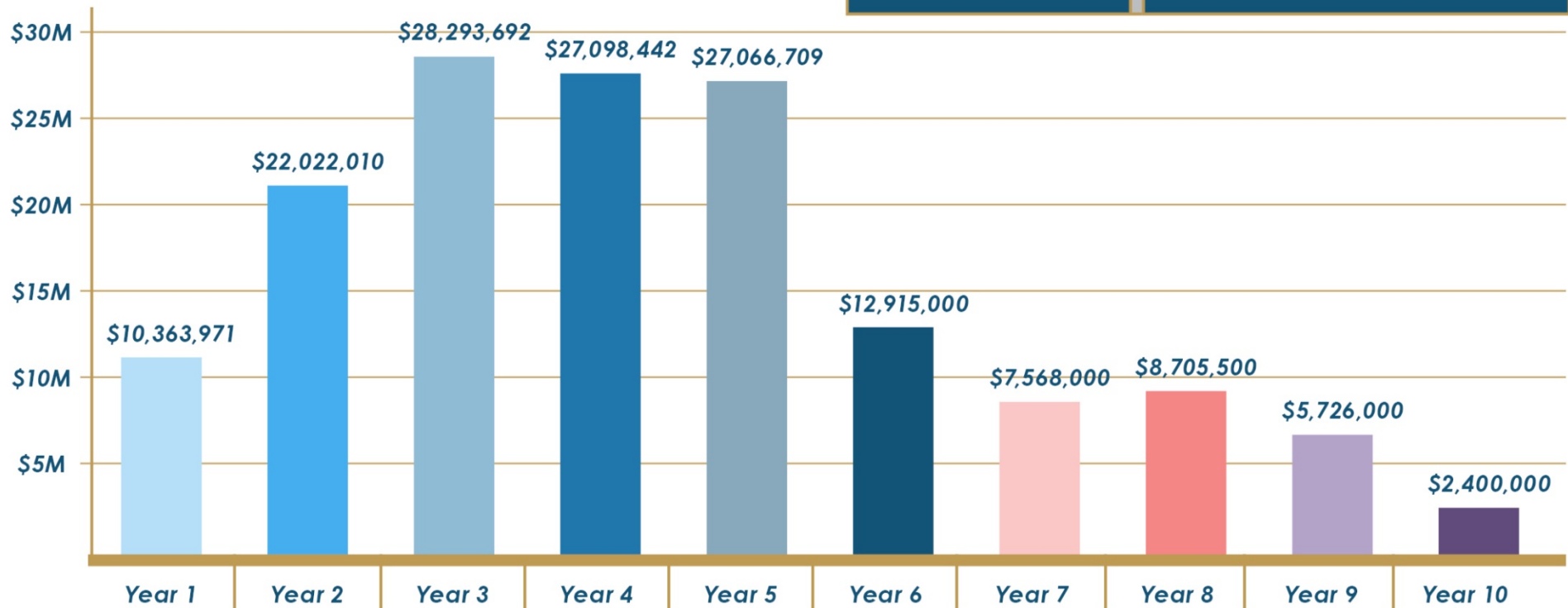
- RESEARCH AND ANALYSIS
- NEEDS AND PRIORITIES
- FUTURE VISION
- IMPLEMENTATION

2 RECOMMENDATIONS

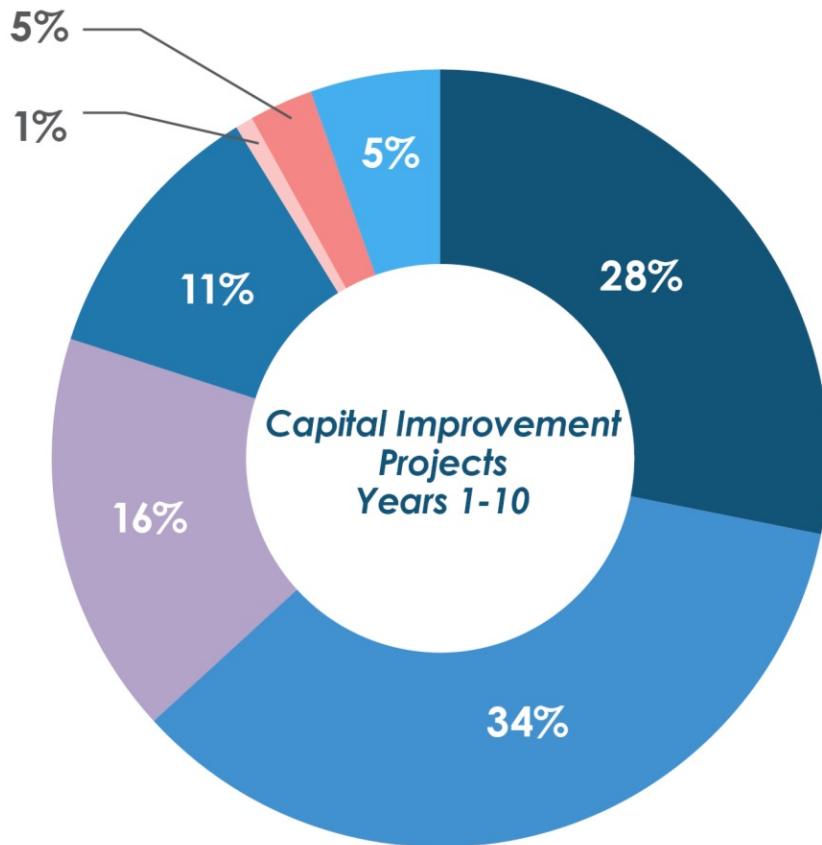


DEPARTMENT FUNDING RECOMMENDED PHASING PLAN

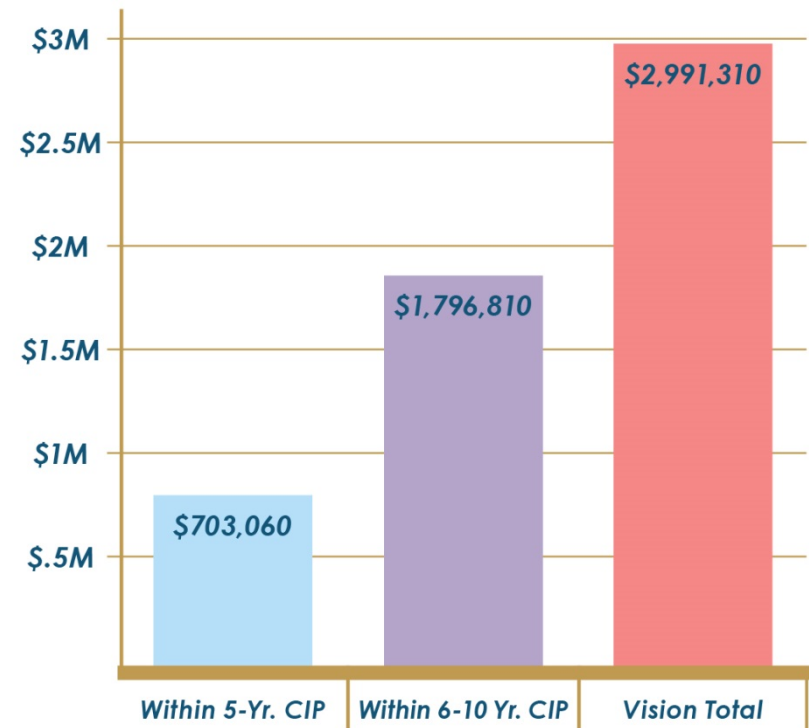
Capital Improvement Projects: Totals	
Phase 1: Year 1-5	\$114,844,824
Phase 2: Year 6-10	\$37,314,892
Phase 3: Year 11+	\$23,840,000
Year 1- 10 Total	\$152,159,716
Totals Years 1-11+	\$175,999,716



DEPARTMENT FUNDING RECOMMENDED PHASING PLAN



Total Additional Annual O&M Costs

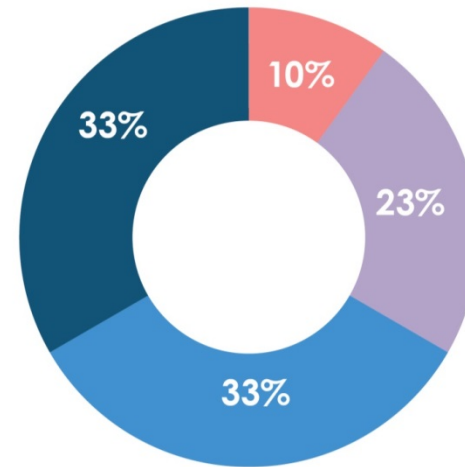


*Note: Costs are in 2016 dollars and have not been escalated.

1-2 Year Immediate Actions – Capital Funding

ACTION ITEMS

- Establish a **dedicated capital funding source**:
 - Deferred maintenance
 - Upgrade of existing facilities
 - Land acquisition and the development of new park facilities
- Focused approach for **capital improvements reinvestments**;
- **Implement Barrier Removal Plan**;
- Establish a **dedicated funding program for public art**;
- **Secure additional grants.**

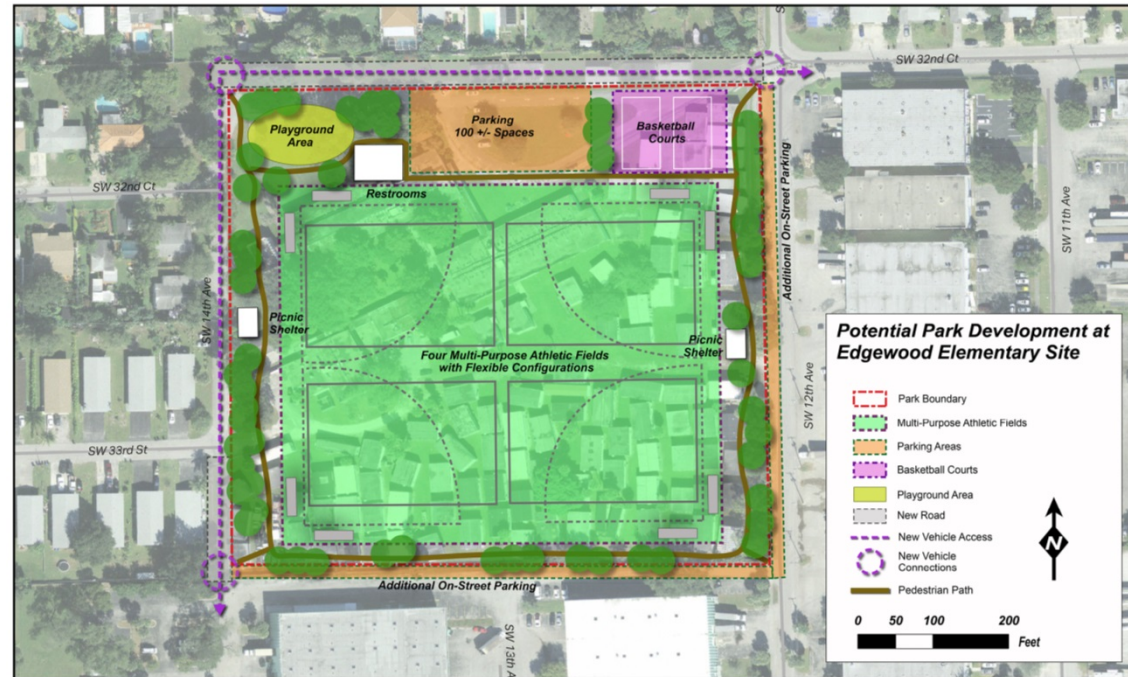


Potential Funding Over Next Ten Years	
Grants (Capital)	\$15,000,000 +/-
Park Impact Fees	\$35,000,000 +/-
Park and Recreation Reinvestment	\$50,000,000 +/-
Parkland Acquisition and Development	\$50,000,000 +/-
Totals	\$150,000,000 +/-

1-2 Year Immediate Actions - Acquisitions

ACTION ITEMS

- Develop a **strategic land acquisition program** to target and secure land acquisition opportunities, particularly in **downtown and urbanizing corridors**;
- Secure targeted surplus or other City owned properties and strategically acquire adjacent lands or trade with other properties to amalgamate contiguous land holdings.



1-2 Year Immediate Actions - Policies

- **Integrate System Master Plan** recommendations into the City Comprehensive Plan;
- **Update Level-of-Service (LOS) standards;**
- **Revise land development regulations;**
- Develop a parks-oriented set of **sustainability design guidelines and standards.**

ACTION ITEMS

Park Type	Service Radius (Urban to Suburban)	Mode of Transportation
Core Neighborhood-based Activities and Experiences		
Access to small neighborhood parks and open space	1/4 to 1/2 mile	Walk, bike
Walking and biking trails	1/4 to 1/2 mile	Walk, bike
Access to playgrounds	1/4 to 1/2 mile	Walk, bike

Figure 4-9: Potential Neighborhood Drainage at Riverland Park



Communication

- Increase marketing and communication efforts;
- Launch a mobile-friendly website and registration system;
- Develop system-wide branding and wayfinding program;
- Develop department facility planning and design guidelines and standards.



*Distribution of Active
Social Media Techniques*

1-2 Year Immediate Actions - Initiatives

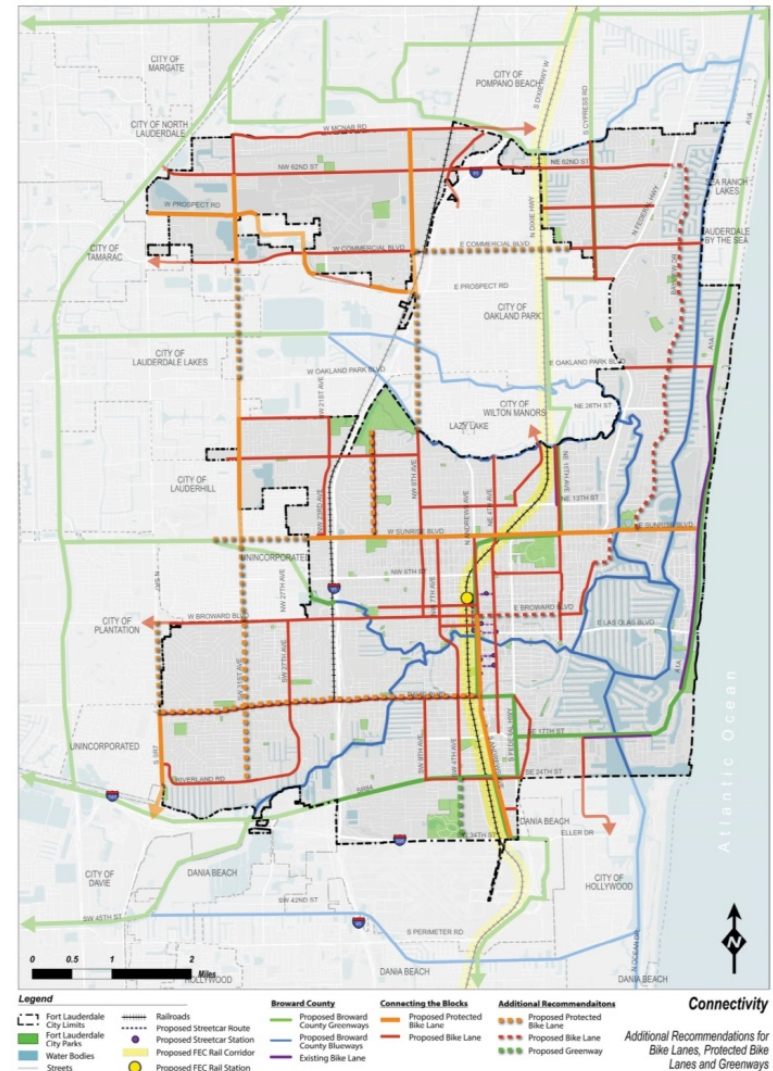
ACTION ITEMS

Safety

- **Update Policies and Procedures Manual** for Parks and Recreation Department;
- Conduct ongoing focus groups and **community outreach** to address **safety concerns**;
- Develop and maintain more **detailed incident reporting**.

Integration

- Incorporate all parks and recreation facilities into the **Neighborhood Mobility Master Plans** and the city-wide **Bicycle and Pedestrian Master Plan**;
- Integrate **sustainable practices** and development of resilient design demonstration projects.



QUESTIONS & COMMENTS



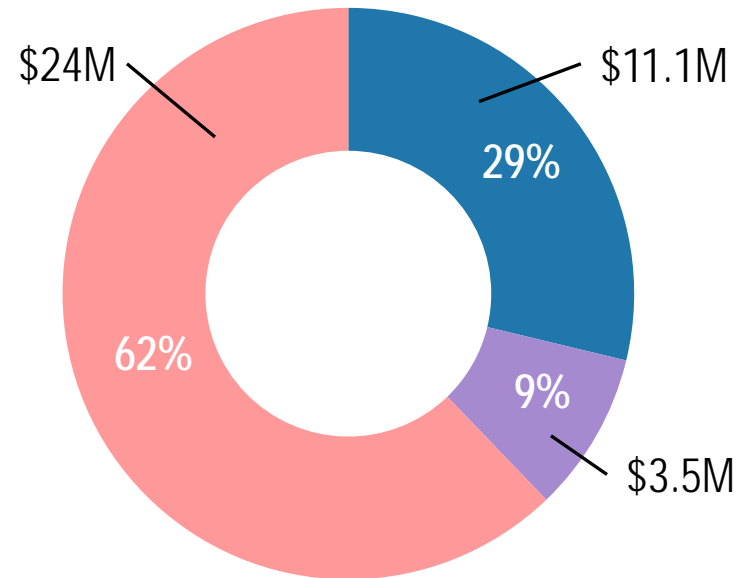
THANK YOU!

EXTRA SLIDES

YOUTH SPORTS FUNDING

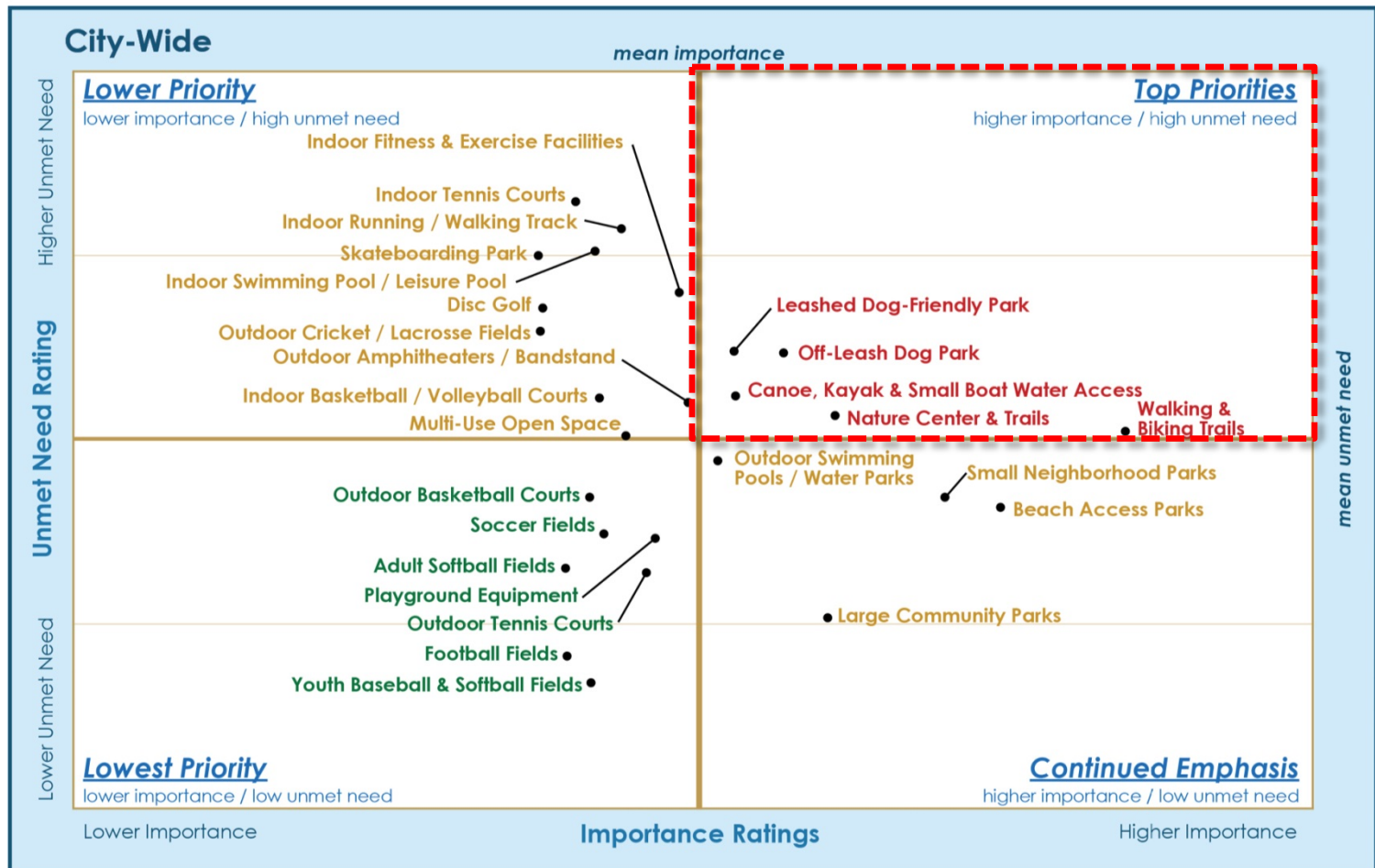
Elements of the System Master Plan:

- Enhancements to 19 of 24 existing multi-use fields to increase capacity
- 40 of 86 sport courts to be resurfaced/renovated
- Recommendations for new facilities:
 - 10 additional athletic fields
 - 18 additional sport courts
- Capacity increase city-wide of 33% for soccer/multi-purpose fields and 16% for courts
- Total capital improvements of \$38.6M



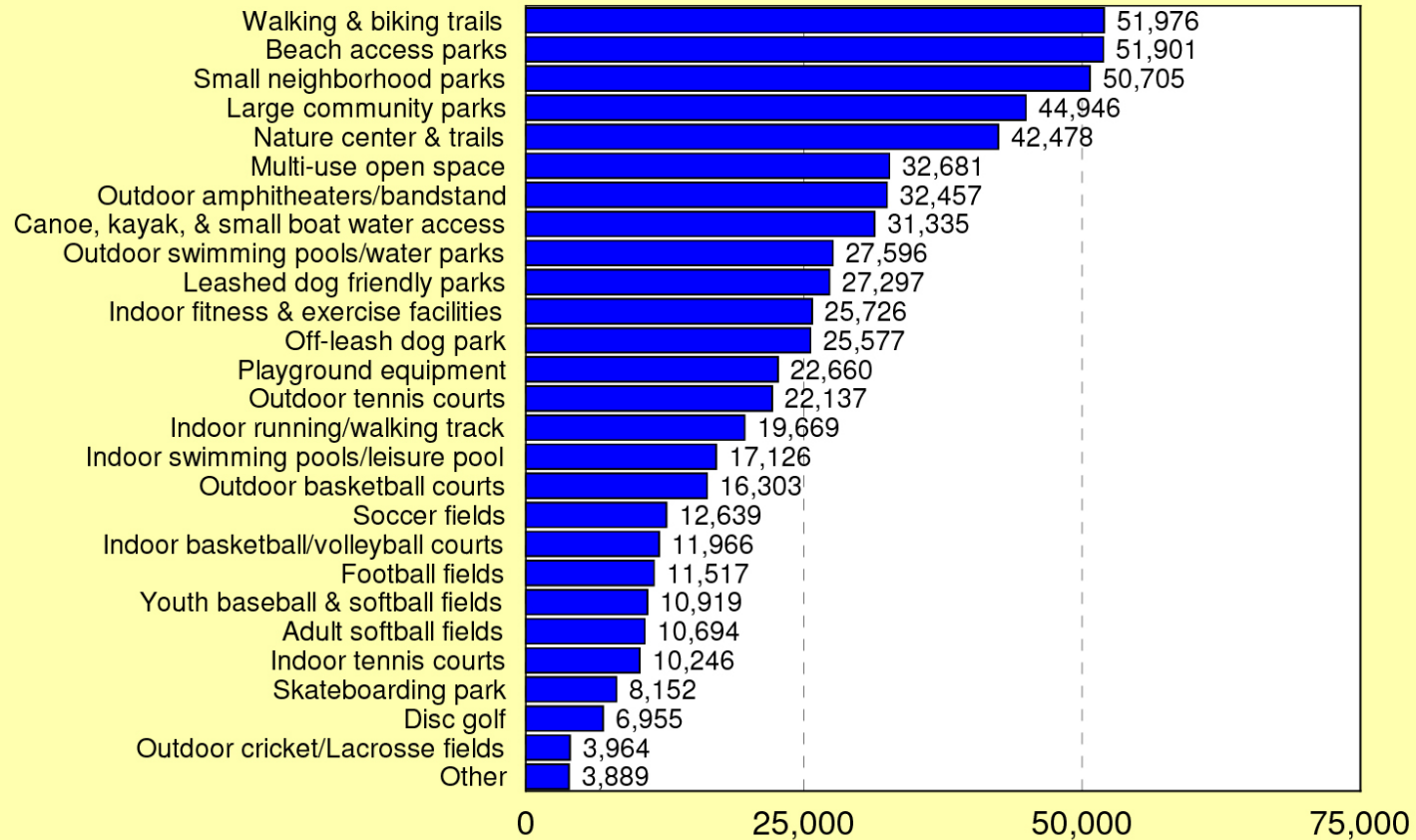
- Improvements to Existing Athletic Facilities
- Development of Surplus Lands for New Athletic Facilities
- Acquisition and Development of New Athletic Facilities

WHAT TYPE OF FACILITY IS MOST IMPORTANT TO YOUR HOUSEHOLD AND YOU HAVE UNMET NEEDS?



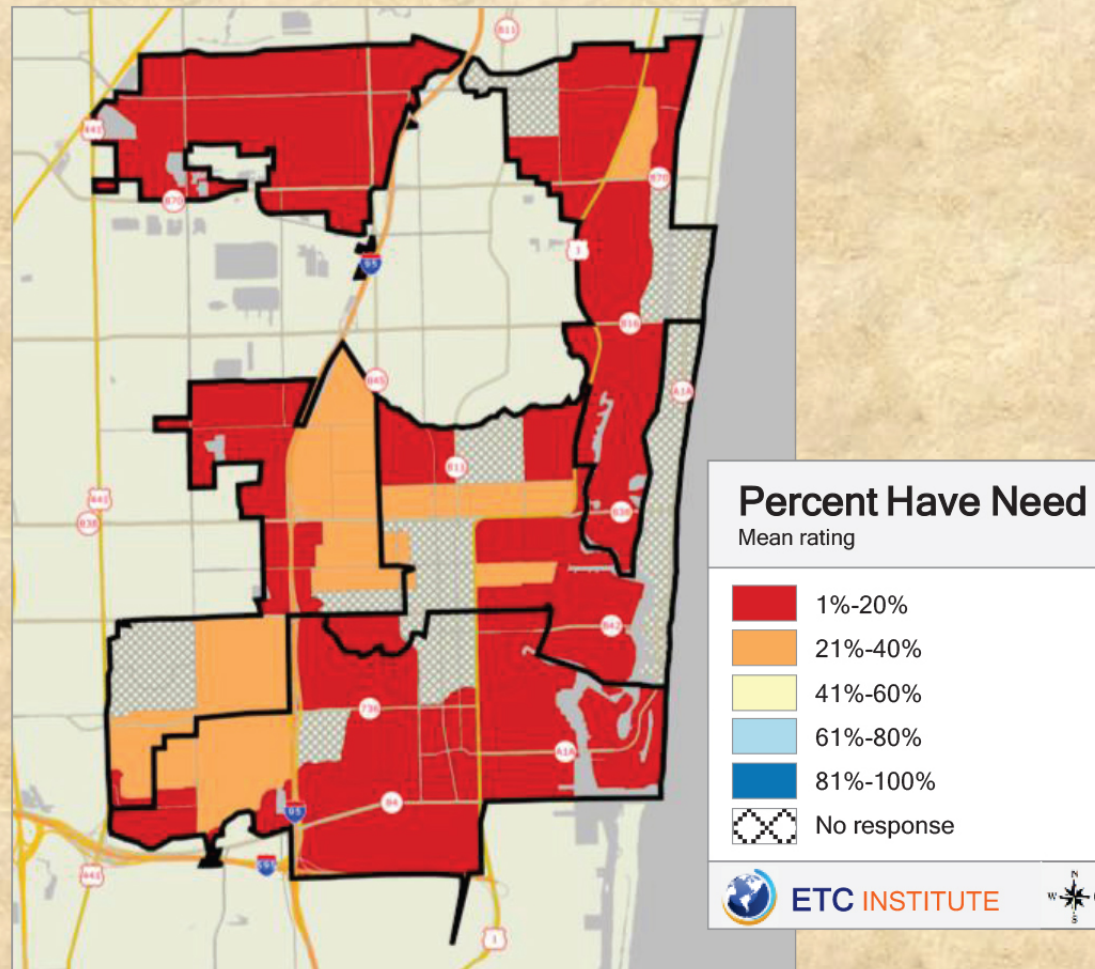
Q10a. Estimated Number of Households in the City of Fort Lauderdale that Have a Need for Parks and Recreation Facilities

by number of households based on 74,786 households in the City of Fort Lauderdale



Source: ETC Institute (2016)

Households Who Have a Need for Skateboarding Park

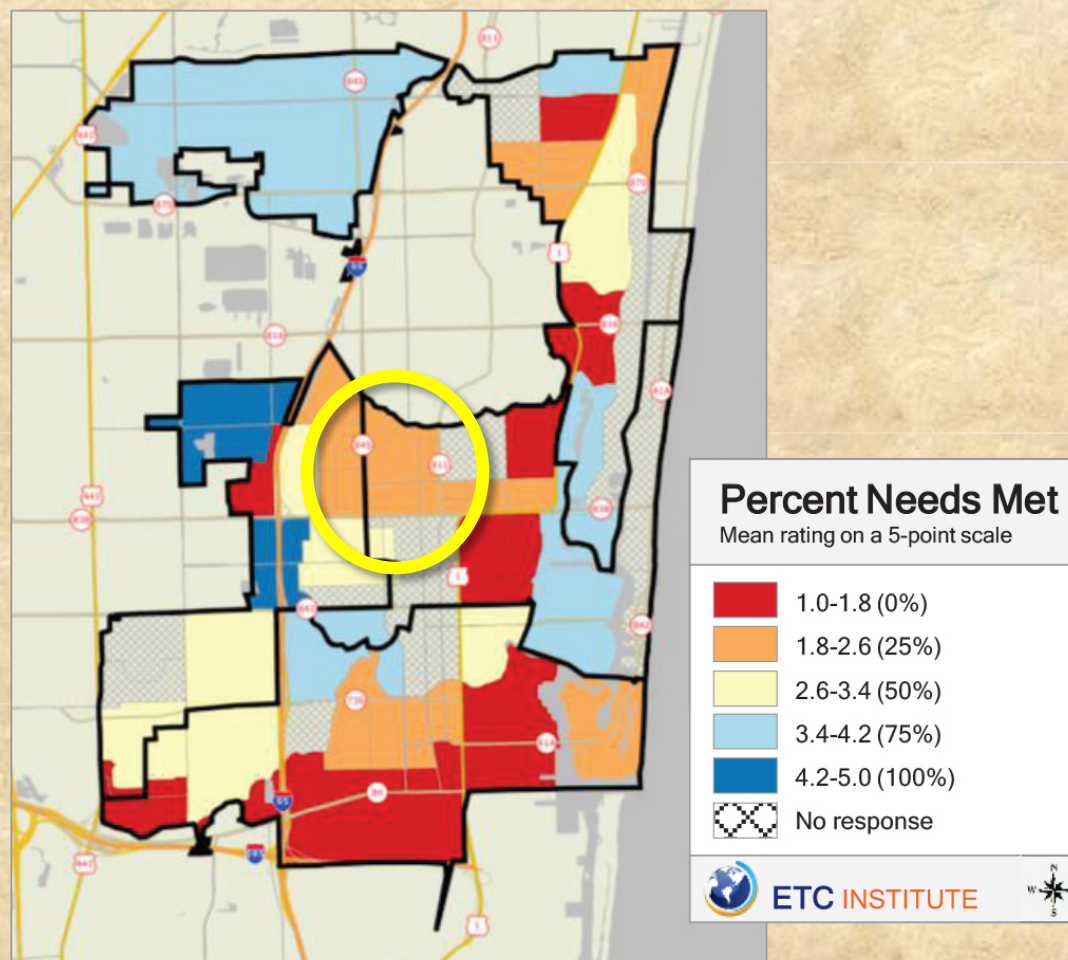


2015 City of Fort Lauderdale Community Parks Survey

Shading reflects the mean rating for all respondents by CBG (merged as needed)



How Well Needs Are Being Met for Skateboarding Park



2015 City of Fort Lauderdale Community Parks Survey

Shading reflects the mean rating for all respondents by CBG (merged as needed)



