

City of Fort Lauderdale

City Hall
100 North Andrews Avenue
Fort Lauderdale, FL 33301
www.fortlauderdale.gov



Meeting Minutes - APPROVED

Tuesday, April 21, 2015

1:30 PM

City Commission Conference Room

City Commission Conference Meeting

FORT LAUDERDALE CITY COMMISSION

JOHN P. "JACK" SEILER Mayor - Commissioner
ROBERT L. McKINZIE Vice Mayor - Commissioner - District III
BRUCE G. ROBERTS Commissioner - District I
DEAN J. TRANTALIS Commissioner - District II
ROMNEY ROGERS Commissioner - District IV

LEE R. FELDMAN, City Manager
JOHN HERBST, City Auditor
JONDA K. JOSEPH, City Clerk
CYNTHIA A. EVERETT, City Attorney

Meeting was called to order at 1:40 p.m. by Vice-Mayor McKinzie.

ATTENDANCE ROLL CALL

Present: 5 - Mayor John P. "Jack" Seiler (arrived at approximately 1:42 p.m.), Commissioner Romney Rogers, Commissioner Bruce G. Roberts, Commissioner Dean J. Trantalis and Vice-Mayor Robert L. McKinzie

Also Present: City Manager Lee R. Feldman, City Auditor John Herbst, City Clerk Jonda K. Joseph, Senior Assistant City Attorney Paul Bangel and Sergeant At Arms Sergeant Ron Magno

No public comments were submitted by email for this meeting.

CITY COMMISSION REPORTS

Events and Matters of Interest

Members of the Commission announced recent and upcoming events and matters of interest.

Red Bull race

Commissioner Trantalis noted that there has been previous discussion about the need to prioritize events on the beach. There is a problem with congestion. Organizers with the Red Bull car race apparently wanted to shut down State Road A1A. He believed that the organizers were trying to work out a new plan which would take the event off the roadway and onto private property. He felt that further discussion is warranted on how to prioritize beach events.

Mayor Seiler said he was contacted by organizers and referred them to the district commissioner as well as the Central Beach Alliance (CBA) and others. He told them he would withhold his support until they met with everyone. He did not immediately know that those meetings were not held and it later came to his attention that there had been some miscommunication between the event planners and advisory boards. He told them the City would not commit to an event during tourist season that would close the road. He agreed there should be a central vetting process with better communication.

Commissioner Rogers pointed out that cruise traffic accounts for 70 percent on A1A. If a section is blocked off temporarily, it is not the end of the world for local residents. Residents should be the priority.

Galleria Project

Commissioner Roberts advised that residents have said there was not ample time to participate in this project. They would like another opportunity. Director of Economic and Sustainable Development Jenni Morejon said the Design Review Committee (DRC) meeting was April 14. Staff has responded to neighbor inquiries. There has been a series of public meetings. DRC serves as a technical review, and they will continue to accept input from residents at public meetings. Commissioner Roberts commented that neighborhoods would like to provide feedback on the technical aspects.

Mayor Seiler advised that he wanted to listen to the neighbors and take their input on the development. Commissioner Roberts said he would like to have another public hearing.

Airport Leases

Commissioner Roberts suggested that airport leases should be revisited in order to assess the value. The City Manager advised that they would be looking into how they solicit leases for proposals.

Schlitterbahn Water Park

Commissioner Roberts questioned the status of the agreement between Schlitterbahn and the Fort Lauderdale Strikers. The City Manager advised that staff has encouraged representatives from Schlitterbahn and The Strikers to finalize the deal. Commissioner Roberts noted that it has been discussed in Envision Uptown meetings. There is a need, from an economic development perspective, to keep the sports team with the Fort Lauderdale label. Mayor Seiler wanted to express a desire to Schlitterbahn for The Strikers to remain there. The City Manager advised that has been expressed.

District III Sidewalks

Vice-Mayor McKinzie requested a status update on sidewalk improvements in District III. The City Manager commented that funding has been identified and staff is compiling a list of the worst sidewalks. It was priced at about \$16 million. Commissioner Trantalis felt that a bond issue could potentially be successful because sidewalks are a major problem and people would see where their tax dollars are going. The City Manager advised they may be able to use about \$2 million in excess dollars in the Risk Management Fund to repair the most significant trip hazards. Mayor Seiler was concerned about liability. He suggested the City Attorney may want to research whether they should be undertaking the responsibility. Commissioner Rogers felt that the ordinance should be reworded. The City Attorney agreed to bring the matter back at a future conference meeting.

911 Non-Emergency Calls

Vice-Mayor McKinzie expressed concern about a lack of response when calls are placed to the 911 non-emergency line, specifically from the Melrose Manors neighborhood. Commissioner Rogers later expanded on the matter, citing issues in his district. The equipment will improve when it is replaced. Commissioner Roberts noted that locations are not being properly identified and therefore cannot be properly dispatched. There is a need for increased training. The City Manager noted that there are different locations throughout the county with the same address.

Code Enforcement

Vice-Mayor McKinzie wished to take a more proactive approach to code enforcement before fines are assessed. He did not want to see more buildings torn down. Commissioner Roberts agreed and noted that if fines are continually assessed, it makes it counterproductive when attempting to sell a building. He wanted to review the process.

CONFERENCE REPORTS

OLD/NEW BUSINESS

BUS-1 15-0514 Launch of the Green Your Routine Website

Assistant Public Works Director Nancy Gassman provided introductory remarks.

Project Manager Rivana Stadtlander reviewed slides related to this matter. A copy of the slides is

attached to these minutes.

In response to Commissioner Trantalis, Stadtlander advised that there is information about sea-level rise in the Climate Resiliency section of the website. Assistant City Manager Susanne Torriente added that discussions have gone on in Public Works as part of the stormwater planning process and no changes have yet been made to the engineering process. It is something that will probably become a policy issue for the Commission. Gassman said the ordinance was redone about three or four years ago and it sets a maximum height for seawall. There is not currently a minimum height. Stadtlander elaborated more on the seawall information for Commissioner Trantalis. He wished to have a future discussion on raising the seawall.

Mayor Seiler opened the floor for public comment.

Charles King, 105 North Victoria Park Road, supported banning Styrofoam from the beach. Commissioner Trantalis noted a challenge with enforcement.

Raymond Cox, no address provided, did not address the subject matter.

Fred Carlson, 625 Orton Avenue, invited Commission members to the Central Beach Alliance meeting at 7 p.m. He requested that the Green Your Routine website be linked from the City website.

There was no one else wishing to speak.

The Commission recessed and convened as the Community Redevelopment Agency Board of Directors at 3:22 p.m. The Commission then reconvened the conference meeting with agenda item BD-1 at 3:27 p.m.

COMMUNITY REDEVELOPMENT AGENCY MEETING

BOARDS AND COMMITTEES

BD-1 15-0415 Minutes circulated - period ending April 16, 2015

None.

BD-2 15-0416 Board and Committee Vacancies

Please see regular item R-1.

Mayor Seiler opened the floor for public comment.

Raymond Cox, no address provided, expressed concern about local government operations and the police force.

There was no one else wishing to speak.

The City Clerk advised that an advisory board training session is scheduled for 5:30 p.m. Monday, April 27.

OTHER BUSINESS

Parks and Recreation Department Director Phil Thornburg reviewed slides related to efforts of the

Clean Team. A copy of the slides is attached to these minutes.

CITY MANAGER REPORTS

MGR-1 15-0563 Review of Letter to the U.S. Department of Justice Regarding Police Department Internal Affairs Investigation Case No. 14-090 (Alvarez, Holding, C. Sousa and Wells)

The City Manager explained that a letter has been prepared for issuance tomorrow pending Commission approval.

Commissioner Trantalis suggested being more proactive in requesting the Department of Justice Review. Mayor Seiler clarified that an invitation can be issued but the federal government does not have to respond. Commissioner Trantalis felt that it should be worded as a request rather than an invitation.

Mayor Seiler opened the floor for public comment.

Charles King, 105 North Victoria Park Road, felt that the Commission should take action rather than waiting for the FBI to investigate. He advocated for body cameras and a residency requirement.

Raymond Cox, no address provided, expressed concern about the way the police treat the homeless.

There was no one else wishing to speak.

There was consensus to proceed with the language as amended.

The Commission convened at 3:54 p.m. for the closed door session and adjourned at the end of the session.

EXECUTIVE CLOSED DOOR SESSION

The City Commission will meet privately pursuant to Florida Statute, Section 286.011(8)(a) concerning:

Silvia E. Villagran v. City of Fort Lauderdale Case No. 13-027759 Div. 04

Vincent Hall v. City of Fort Lauderdale Case No. 13-018465 Div. 18



GREEN YOUR ROUTINE WEBSITE

April, 2015

The Project

- September 2012 to April 2015
- Resource Recovery Board Grant Funded
- Cross-departmental focus
- 70+ Community Builders contributed ideas
- Evolution from a few recycling and forestry pages → interim section on City's main site → over 450 pages of original content

The Website

- Sits on same CMS as other City sites
- Design builds on penetration of GYR brand
- Unique wireframe/structure addresses all six sustainability topics and speaks to four distinct audiences
- Operates as a destination ***and*** portal
- Informative, engaging, useful
- Sustainability as people, planet and profit
- Supports Strategic Goals



Let's take a look...

WELCOME! Explore our new Green your Routine website, share your feedback and your own green success stories. We hope you will visit often and tell your neighbors. Please note that some of our features are still under construction. We appreciate your patience while we load all of the wonderful content about sustainable Fort Lauderdale.



CITY OF FORT LAUDERDALE



Search...



GREEN YOUR ROUTINE

AT HOME AT WORK AT SCHOOL AROUND TOWN GREENER GOVERNMENT



CLIMATE
RESILIENCY



CONSERVATION
& EFFICIENCY



RESPONSIBLE
DEVELOPMENT
& LAND USE



NATURAL
RESOURCES
PRESERVATION



TRANSPORTATION
& CONNECTIVITY



RECYCLING &
WASTE REDUCTION



CLIMATE RESILIENCY MITIGATING RISK AND ADAPTING TO CHANGE

EVENTS

NEWS

LINKS

There are no Events.

[View All Events >](#)

**GREEN YOUR
ROUTINE
IN ACTION**
CITY OF FORT LAUDERDALE



Discover, explore and create a
sustainable Fort Lauderdale.
[Start Here >>](#)

**SEE ALL
OUR NEW
GOING
GREEN
APPS**



**SUSTAINABILITY
ACTION
PLAN**
CITY OF FORT LAUDERDALE



RECYCLING & WASTE REDUCTION



Being mindful of what we consume and how we dispose of things is one of the easiest ways to Green Your Routine and has a positive impact on all three aspects of sustainability. Thoughtful purchasing, careful use and appropriate disposal protects our environment, contributes to our local economy, and keeps our neighborhoods clean and safe. This section of our website has information about reducing waste at its source, the services that we offer curbside, in public spaces and for the commercial sector, and how to dispose of most anything at home, at work and all around the City of Fort Lauderdale.

YOUR SOLID WASTE SERVICES



A to Z DISPOSAL DIRECTORY



NEED A CART? MISSED PICKUP? QUESTIONS?

HOUSEHOLD HAZARDOUS WASTE



RECYCLING IN FORT LAUDERDALE



GETTING TO ZERO WASTE



HOW TO RECYCLE

Hi Kids!

VOLUNTEER

OUR WASTE STREAM



DISPOSAL & CLEAN-UP EVENTS



[AT HOME](#) [AT WORK](#) [AT SCHOOL](#) [AROUND TOWN](#) [GREENER GOVERNMENT](#)

JOIN IN

[Greener Government](#) » [Recycling & Waste Reduction](#) » [Recycling in Fort Lauderdale](#)

WHAT AND HOW TO RECYCLE IN FORT LAUDERDALE

Font Size: [Share & Bookmark](#) [Feedback](#) [Print](#)

▼ RECYCLING & WASTE REDUCTION

- SOLID WASTE & RECYCLING SERVICES
- OUR WASTE STREAM
- GETTING TO ZERO WASTE

▼ RECYCLING IN FORT LAUDERDALE

[WHY RECYCLING MATTERS](#)

▼ WHAT AND HOW TO RECYCLE

[GENERAL RECYCLING GUIDELINES](#)[RECYCLING PLASTICS](#)[RECYCLING PAPER, PAPERBOARD & CARDBOARD](#)[RECYCLING GLASS](#)[RECYCLING METALS](#)[RECYCLING QUICK REFERENCE GUIDE](#)[RECYCLING MYTHS](#)[5 WAYS TO INCREASE RECYCLING](#)[DON'T RECYCLE THESE!](#)[STAGING YOUR](#)

The object of recycling is to turn our trash into raw materials for manufacturers. Doing this requires that we pull the right kinds of waste out of our community's waste stream and send it through the recycling process. Almost half of all waste produced in the United States is the "right kind", including up to 85% of typical household waste.

Yet, what is "right" to recycle is still very much a local issue, and we understand that can be confusing. As the recycling industry matures we will see more consistency. For now, it is not uncommon to be able to put one type of material into recycling in one City, only to have the same material rejected in another. It is important for you to know the recycling guidelines for Fort Lauderdale.

We are continually working with our processor to expand the number of items that can be recycled here, and we are lucky to be part of a metropolitan region that offers many options for recycling the items that cannot go into our City's carts or containers. We ask that all neighbors familiarize themselves with our guidelines.

This section teaches you how to recycle cleanly in Fort Lauderdale, and introduces the recycling services provided by the City. Please refer to our [GYR Waste Directory](#) for options beyond local recycling.

[GENERAL RECYCLING GUIDELINES](#)[RECYCLING PLASTIC](#)[RECYCLING PAPER & CARDBOARD](#)[RECYCLING GLASS](#)[RECYCLING METALS](#)[DO NOT RECYCLE](#)



GREEN YOUR ROUTINE

AT HOME AT WORK AT SCHOOL AROUND TOWN GREENER GOVERNMENT

JOIN IN



[Greener Government](#) » [Recycling & Waste Reduction](#) » [Recycling in Fort Lauderdale](#) » [What and How to Recycle](#)

▼ RECYCLING & WASTE REDUCTION

- ▶ SOLID WASTE & RECYCLING SERVICES
- ▶ OUR WASTE STREAM
- ▶ GETTING TO ZERO WASTE

▼ RECYCLING IN FORT LAUDERDALE

WHY RECYCLING MATTERS

▼ WHAT AND HOW TO RECYCLE

GENERAL RECYCLING
GUIDELINES

▶ RECYCLING PLASTICS

RECYCLING PAPER,
PAPERBOARD &
CARDBOARD

RECYCLING GLASS

RECYCLING METALS

RECYCLING QUICK
REFERENCE GUIDE

RECYCLING MYTHS

5 WAYS TO INCREASE
RECYCLING

▶ DON'T RECYCLE THESE!

STAGING YOUR

PLEASE DON'T RECYCLE THESE!

Font Size: [+](#) [-](#) [+](#) [Share & Bookmark](#) [\[+\] Feedback](#) [Print](#)

The City of Fort Lauderdale earns income for each load of [clean recyclables](#) delivered to our processing plant. This income offsets the cost of providing sanitation services in our City. We earn less for contaminated loads. The following are the top contaminants.



1. **Food.** Whole, part or just the stuff that sticks. Keep it all away from your recyclables please. That includes liquids. Especially greasy liquids. For more on food waste, click [here](#).
2. **Plastic bags** or anything that looks or feels like a [plastic bag](#), such as dry cleaning covers and disposal gloves.
3. **Polystyrene foam** or similar products, such as packing peanuts and foam drink cups. Learn more about foam [here](#).
4. **Unrecyclable glass**, such as mirrors, windows, china and other dishware, and knick-knacks. Learn more about glass [here](#).
5. **Hazardous Waste.** For information on proper disposal of hazardous waste (everything from batteries to medication), click [here](#).

[SOLID WASTE & RECYCLING SERVICES](#)[OUR WASTE STREAM](#)[GETTING TO ZERO WASTE](#)[RECYCLING IN FORT LAUDERDALE](#)**▼ GREEN YOUR ROUTINE WASTE DISPOSAL DIRECTORY**[A TO Z WASTE DISPOSAL INDEX](#)**▼ HOUSEHOLD HAZARDOUS WASTE**[HHW STORAGE & DISPOSAL GUIDELINES](#)[FERTILIZERS, HERBICIDES & PESTICIDES](#)[PAINT](#)[SOLVENTS & CLEANING PRODUCTS](#)[PROPANE, LIGHTER FLUID & FLAMMABLES](#)[FIRE EXTINGUISHERS](#)[LIGHTING & LIGHT BULBS](#)[GARDENING, LAWN CARE, HOLIDAY TREES](#)[OVERSIZED ITEMS](#)[ELECTRONIC WASTE](#)[MEDICATIONS & MEDICAL WASTE](#)[AUTOMOTIVE WASTE](#)[PET WASTE](#)[HOUSEHOLD GREASE \(FOGS\)](#)[CLOTHING](#)[BOOKS](#)Font Size: [+](#) [-](#) [+](#) [Share & Bookmark](#) [\[+\] Feedback](#) [Print](#)**HOUSEHOLD HAZARDOUS WASTE**

According to the Environmental Protection Agency (EPA), hazardous waste is "waste that is dangerous or potentially harmful to our health or the environment. Hazardous wastes can be liquids, solids, gases, or sludges. They can be discarded commercial products, like cleaning fluids or pesticides, or the by-products of manufacturing processes." **Household hazardous waste (HHW) includes common household items that contain toxic chemicals and therefore need proper handling during disposal.**

HHW typically includes items used to clean, lubricate, paint, fuel and exterminate. The average household will have a number of items that qualify as HHW in kitchens, bathrooms, garages and sheds, home offices, storage spaces and even bedrooms. Hazardous waste is often highly regulated material, meaning that the Environmental Protection Agency (EPA) licenses certain waste disposal facilities to accept and process the waste safely.



The City of Fort Lauderdale offers a number of opportunities for you to dispose of HHW so that it does not harm humans, wildlife or the environment. We have partnered with neighboring communities to provide free, frequent and convenient drop-off events for HHW disposal and electronics recycling. All that is required to participate is proof of residency, such as a drivers license or utility bill.

To learn more about disposing of specific types of HHW, visit our pages on [fertilizers and pesticides](#), [paint](#), [solvents and cleaning products](#), [propane and other flammables](#), [fire extinguishers](#), and [lighting](#).

HHW STORAGE & DISPOSAL GUIDELINES**HHW & ELECTRONICS DROP-OFF EVENTS**

▼ RECYCLING & WASTE
REDUCTIONSOLID WASTE & RECYCLING
SERVICES

OUR WASTE STREAM

GETTING TO ZERO WASTE

RECYCLING IN FORT
LAUDERDALEGREEN YOUR ROUTINE
WASTE DISPOSAL
DIRECTORY

▼ SOLID WASTE EVENTS

▼ HOUSEHOLD HAZARDOUS
WASTE DROP-OFF▶ HHW DROP-OFF
LOCATIONS

ADOPT-A-STREET

WATERWAY, PARK & BEACH
CLEAN-UPS

HHW DROP-OFF EVENT LOCATIONS

Font Size: + - + Share & Bookmark [+] Feedback Print

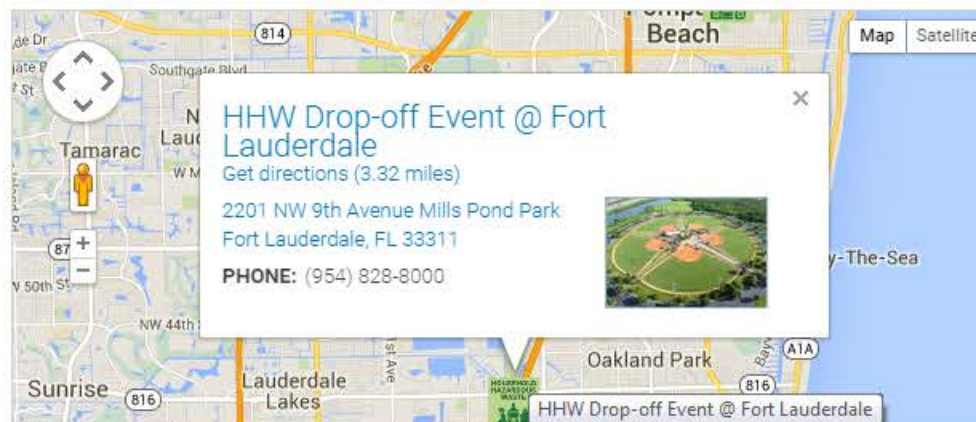
Household Hazardous Waste Drop-off Events are held throughout the year. City of Fort Lauderdale residents may participate in events taking place in Fort Lauderdale, Coconut Creek, Coral Springs, Pompano Beach and Tamarac. [City of Fort Lauderdale HHW Drop-off Guidelines](#) apply at all events.

For 2015, the following HHW Drop-Off Events are being offered. All events take place on a Saturday, except where noted.

Fort Lauderdale	Coconut Creek	Coral Springs	Pompano Beach	Tamarac
- January 24	- March 7	- February 7	- June 6	- May 2
- April 11	- September 12	- October 4 (Sunday)	- November 7	- December 5
- August 1				

Effective October 1, 2013, Fort Lauderdale's neighbors are no longer able to dispose of household hazardous waste, electronics, or yard waste at any of Broward County's drop-off locations. This service change reflects a decision to streamline fiscal spending for the City's neighbors. Residents should continue to dispose of yard waste through the City's curbside [Yard Waste](#) or [Bulk Trash](#) Collection Programs.

Please refer to the map below for event addresses. You may need to zoom out to see all locations. Click on the green HHW symbol for each location to get links to directions and additional event details.



GREEN YOUR ROUTINE WASTE DISPOSAL DIRECTORY

The very best way to handle waste in our community is not create it in the first place. Buying just what you need, favoring items with less packaging, and bringing re-usable shopping bags with you makes a huge difference in how much trash we collect and process. Eventually though, things will be used up or worn out or no longer useful to you. **Use this directory to determine how to dispose of the things you no longer need. Please keep in mind that many of the things we throw away in a modern society are specialized waste.** This includes items that cannot be sent through the traditional recycling or disposal streams because the waste is either hard-to-handle, toxic or hazardous, oversized, dangerous to the public, or regulated in some way. Find detailed instructions for disposal here, or contact [City of Fort Lauderdale 24-hour Customer Service](#) for additional assistance.

**DIRECTORY
INDEX**



**HOUSEHOLD
HAZARDOUS
WASTE**



**OVERSIZED
WASTE**



**ELECTRONICS:
SCREENS,
BATTERIES, CELL
PHONES & MORE**



**MEDICATIONS
& MEDICAL
WASTE**



**GARDENING:
PLANTS, POTS &
EVEN PUMPKINS**



PET WASTE



**FOGS:
FATS, OILS,
GREASE**



CLOTHING



GLASS



**AUTOMOTIVE:
TIRES, OIL, FUEL,
BATTERIES**



**CONSTRUCTION
& DEMOLITION
DEBRIS**



AAerosol cans (empty) **R**Aerosol cans (not empty) **GHE**Aluminum Foil (clean) **R**Asceptic boxes (empty) **R**Automotive Batteries **HSE**Automotive Waste **HSE****B**Bags (cloth, leather, etc.) **D**Bags (paper) **R**Bags (plastic) **S**Batteries **HSE**Berry containers (plastic) **R**Beverage cans **R**Beverage cups (foam) **G**Biohazards **HE**Books **DR**Bottlecaps (metal) **R**Bottlecaps (plastic) **R**Bottles (glass) **R****I**Ink and Printer Cartridges **SHE****J**Jack-o-Lanterns **YD**Jars **R**Jewelry **D**Juice boxes **R**

Juice pouches

Junk mail **R****K**

Kitchen Oil and Grease

LLawncare Chemicals **HE**Lighting & Light Bulbs **DHEG**Lighter Fluid **HE****M**Magazines **R**Medication **HES**Medical Waste **H**Mercury-based Light Bulbs **HE**Metal containers **R****S**Secure Collection Boxes **H**
(for Medicine & Needles)Shoes **D**Shredded Paper **R**Solvents **HE**Stickers & decals **DG**Straws (plastic) **R**Styrofoam **SG****T**Televisions **DHE**Thermometers **HE**Tiles (Roofing) **DG**Tires **SB**Toothpaste tubes **G**Trees (Holiday) **YBE**Tree Trimmings (Branches & Leaves) **Y**Tree Trimmings **DRGH**
(Holiday Decorations)Tree Trunks **YB**Tubs (plastic) **R**

ov/greener-government/recycling-waste-reduction/gyr-waste-disposal-directory/gardening-lawncare-holiday-trees/tree-trimmings-and-tree-trunks

CITY OF FORT LAUDERDALE

GREEN YOUR ROUTINE

AT HOME AT WORK AT SCHOOL AROUND TOWN GREENER GOVERNMENT

Greener Government » Recycling & Waste Reduction » Green Your Routine » Waste Disposal Directory » Gardening, Lawn Care, Holiday Trees

TREE TRIMMINGS AND TREE TRUNKS

Font Size:

Tree trimmings should be disposed of in your green yard waste cart. Cut large pieces down to fit in the cart and make sure that the

Tree TRIMMING

ov/greener-government/natural-resources-preservation/growing-our-green-canopy/tree-planting

Energy Saving Tree Placement

Trees and Power Lines

TREE TRIMMING

WORKING WITH A TREE SERVICE COMPANY

STORM-READY TREES

INTEGRATED PEST MANAGEMENT

LEARN MORE ABOUT TREES

GYR TREE DIRECTORY

BEACH PRESERVATION AND OCEAN WILDLIFE

FLORIDA-FRIENDLY LANDSCAPING

WILDLIFE & HABITATS

these oversized plants all greenery separate bulk waste guideline not exceed allowable

Our Urban Forester trees by becoming a are unsure of how to a professional and a professional firm is standard industry customers

From time to time, t companies, cable p

resources-preservation/growing-our-green-canopy/tree-planting-care-ma

Working with a Professional Tree Trimmer

When working with a professional, be sure to check that the company County, and that all staff has been trained in proper tree trimming. Wh a tree in Fort Lauderdale, tree pruning must be done according to acc standards. Commercial tree trimmers must have Broward County Tree Fort Lauderdale. Additional information can be found using these links

- Broward County Tree Trimmer Licensing Investigation & Enfo
- Broward County Tree Trimmer Cards

For more information, see Working with a Tree Service Company.

More Information

UF IFAS University of Florida IFAS Extension shade trees and the Proper Way

The first document is a two-page by UF-IFAS regarding shade trees differently in the landscape than they do in the forest because of more maintains the structural integrity of these trees, maintains their beauty plants can thrive too. The second link takes you to information on pruning Indian Date Palm, Queen Palm, Sabal Palms and more.

Tree City USA Bulletin No. 8: D

This is a summary of the Arbor D

ov/greener-government/natural-resources-preservation/wildlife-habitats

CITY OF FORT LAUDERDALE

GREEN YOUR ROUTINE

AT HOME AT WORK AT SCHOOL AROUND TOWN GREENER GOVERNMENT

Greener Government » Natural Resources Preservation

WILDLIFE & HABITATS

Font Size:

WE ARE WILD

Look at any photograph of Fort Lauderdale and you notice our gleaming office towers, our bustling airport, planned network of neighborhoods and streets. You see an impressive amount of green and blue, places where we are able to preserve the unique ecosystem that brought us to settle long ago.

The early settlers were impressed with the bounty of diversity of wildlife. From the beginning, the animals in the region brought the curious and the courageous, and they, along with the beautiful climate, were the main attraction in our burgeoning tourism industry and a driver of population growth. Settlers also knew that certain animals were crucial to their survival. Some they ate, and some were needed for healthy crops, and still others controlled the mosquito and dangerous pests. While the City's human population grew, the settlers knew it was important to have a healthy animal population here and healthy.

It is still the same today. **While Fort Lauderdale is a bustling urban epicenter, we are a little wild and are doing everything we can to stay that way. You can help.** This section of the website introduces the many animals which you will see around our beautiful City, and it provides the information you need to welcome them safely into your neighborhood.

OUR WILD NEIGHBORS

Meet the wondrous inhabitants of our air, land and water. We will tell you who they are, how they help us, and what we can do to protect them. From the manatees and turtles who are the Stars of our Ocean, to the butterflies and hummingbirds who are our Productive Pollinators, to our Natural Pest Controllers like frogs, bats and owls, and even the Snowbirds who migrate through each year, you will

NATURAL RESOURCES
PRESERVATION

CLEAN AIR

REDUCING GHG EMISSIONS

- CLEAN WATER
- GROWING OUR GREEN CANOPY
- BEACH PRESERVATION AND OCEAN WILDLIFE
- FLORIDA-FRIENDLY LANDSCAPING
- WILDLIFE & HABITATS

CLEAN AIR

Font Size: [+](#) [-](#) [+](#) [Share & Bookmark](#) [\[+\] Feedback](#) [Print](#)

Clean air is essential to our health, the environment, and agriculture. Fort Lauderdale and the South Florida region have generally good air quality. Yet, there are ways to make the air we breathe even healthier, and in doing so we can also help to alleviate symptoms experienced by our neighbors with lung disease, improve the growing environment for trees and plants, and reduce the emissions which are thought to affect climate in the long term.

The American Lung Association's *State of the Air 2014* report used the U.S. Environmental Protection Agency's Air Quality System (AQS) database to collect data from 2010 to 2012 to produce county-by-county ratings of air quality. On a scale from A to F, Broward County scored a "B" for its ozone quality and a "B" for its short-term particle pollution (which measures hours-long spikes in the particle pollution).

Today's Forecast...



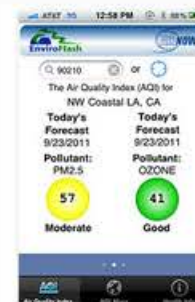
To get even more forecast information, go to Air Now's [Air Quality Index Forecast](#).



What's in our air?

Well, plenty of fresh air with all the things we need. Nevertheless, the air we breathe can be contaminated in small percentages that do make a difference. Some pollutants are natural, such as too much pollen or smoke from a wildfire. However, the majority of pollutants (or air

Through EnviroFlash, you can [subscribe to notifications](#) or [download the AirNow app](#) to your phone and always have the AQI at your fingertips.



What is the Air Quality Index (AQI)?

Good 0-50	Air quality is considered satisfactory, and air pollution poses little or no risk.
Moderate 51-100	Air quality is acceptable; however, for some pollutants there may be a moderate health concern for a very small number of people who are unusually sensitive to air pollution.
Unhealthy for Sensitive Groups 101-150	Members of sensitive groups may experience health effects. The general public is not likely to be affected.
Unhealthy 151-200	Everyone may begin to experience health effects; members of sensitive groups may experience more serious health effects.
Very Unhealthy 201-300	Health alert: everyone may experience more serious health effects.



AT HOME

AT WORK

AT SCHOOL

AROUND
TOWN

GREENER
GOVERNMENT

[Greener Government](#)

GYR DICTIONARY AND SITE INDEX

Font Size: [Share & Bookmark](#) [Feedback](#) [Print](#)

Greening your routine should be a personal adventure. There is no right or wrong way to start. We have structured this website to encourage you to explore topics in any order you like. If you are looking for specific information, try this alphabetized index. Listings are linked to pages where you can get started with various topics, and each is defined to help you learn more about sustainability! If you don't see what you need here, then try the [City of Fort Lauderdale A to Z Guide](#).

A Special Note to Students: Feel free to use our dictionary for homework help. If you and your teacher think that we should add a few words, make a list and send it to us by clicking the [Feedback](#) button on the top right part of this page.

A B C D E F G H I J K L M N O P Q R S T U V W X Y Z

A

Adaptation - Areas that experience coastal flooding and that are vulnerable to the related impacts of rising sea levels

Adaptation Action Areas - An optional comprehensive plan designation for areas that experience coastal flooding and that are vulnerable to the related impacts of rising sea levels for the purpose of prioritizing funding for infrastructure and adaptation planning

G

Garbage - More commonly known as trash or garbage, consists of everyday items we use and then throw away, such as product packaging, grass clippings, furniture, clothing, bottles, food scraps, newspapers, appliances, paint, and batteries. This comes from our homes, schools, hospitals, and businesses.

Global Warming - A pervasive increase in the average atmospheric temperature of

S

Saltwater intrusion - The movement of saltwater into freshwater aquifers. Saltwater is able to push inland beneath freshwater because it is denser and has a higher water pressure due to its high mineral content. Human activities that can contribute to saltwater intrusion are: groundwater pumping from coastal freshwater wells, navigation channels, and agricultural drainage channels. Saltwater intrusion can also be worsened by naturally



GREEN YOUR ROUTINE

AT HOME

AT WORK

AT SCHOOL

AROUND
TOWN

GREENER
GOVERNMENT

JOIN IN



Greener Government

JOIN IN!

Green Your Routine is not just a program, a slogan, or a brand. It is a call to action. Thanks to you, our neighbors, it is also a way of life in our community. **The first and most important way you can join in is to look at how you live, work and enjoy our fine city, and make small changes at your own pace based on the information you find on this website, those we link to, and other sources that teach about sustainability.**

For those who want to hear or do more, we offer many convenient and fun options. Click on the links below, or contact our [Neighbor Support Volunteer Office](#). We're always adding new opportunities, so watch this page for updates and additions, and check our [calendar](#) for specialized volunteer events.

**BE A
GREEN YOUR
ROUTINE
VOLUNTEER**



**SHARE YOUR
SUCCESS
STORY**



**CHECK OUT
OUR
ACTION MAP**



FOLLOW US



WATCH FLTV



**BOOKMARK &
SHARE THIS
WEBSITE**



SIGN UP FOR



PUT WASTE



ADOPT A STREET





AT HOME AT WORK AT SCHOOL AROUND TOWN GREENER GOVERNMENT

[Greener Government](#) » [Natural Resources Preservation](#) » [Beach Preservation and Ocean Wildlife](#) » [Keeping our Beaches Clean](#)

▼ NATURAL RESOURCES PRESERVATION

- CLEAN AIR
- CLEAN WATER
- GROWING OUR GREEN CANOPY

▼ BEACH PRESERVATION AND OCEAN WILDLIFE

- OFFSHORE REEF PROJECTS
- PRESERVATION CHALLENGES, PLANS AND TACTICS

▼ KEEPING OUR BEACHES CLEAN

- GREEN YOUR BEACH ROUTINE
- SEAWEED COMPOSTING
- ▶ NO BUTTS ON THE BEACH, PLEASE!
- SEA TURTLES
- FLORIDA-FRIENDLY LANDSCAPING
- WILDLIFE & HABITATS

NO BUTTS ON THE BEACH, PLEASE!

Font Size: + - Share & Bookmark Feedback Print

Small litter such as gum wrappers, bottle caps, straws, and cigarette butts may seem harmless, but in reality they accumulate over time and pose a threat to the environment and our economy. Fort Lauderdale sees all these types of trash and more on our beaches but the litter that requires the most attention is cigarette butts.



Cigarette butts are the number one littered item found on beaches and waterways worldwide. The Ocean Conservancy's annual [International Coastal Cleanup](#) (ICC) reports that "cigarette butts have been the single most recovered item since collections began." Data from the annual ICC shows that in 2010, over one million cigarettes or cigarette filters were removed from American beaches and inland waterways. The small pieces of trash are not only unattractive but are also harmful to the environment and marine life. The filter in a cigarette butt is made of a plastic called cellulose acetate which can take up to twenty-

five years to break down and during this time it can be ingested by marine life. If an animal eats cigarette butts, they can block the digestive tract or fill its stomach, causing malnutrition or starvation. The toxic chemicals and carcinogens found in the butts' filters and any remnant tobacco are quickly leached from the butts by water. These chemicals contaminate waterways and poison wildlife.

Discarded cigarette butts in the streets can be carried as runoff from streets into storm drains which lead to the ocean and can end up on our beaches. Every two weeks the City of Fort Lauderdale collects 8,000 to 10,000 cigarette butts from a section along Las Olas beach that is only one third of a mile long. The cleanup costs the City



[AT HOME](#) [AT WORK](#) [AT SCHOOL](#) [AROUND TOWN](#) [GREENER GOVERNMENT](#)[Greener Government](#) » [Climate Resiliency](#) » [Innovative Pilot Projects](#)**▼ CLIMATE RESILIENCY**[CLIMATE AND WEATHER IN
FORT LAUDERDALE](#)[VISION 2035: WE ARE READY](#)**▼ INNOVATIVE PILOT PROJECTS**[ADAPTATION ACTION AREAS](#)[STORMWATER PRESERVES](#)[PAVEDRAIN SYSTEMS](#)[FLOODPLAIN MANAGEMENT](#)[HIGH TEMPERATURE LIVING:
HEAT, FIRE & DROUGHT](#)[MORE ABOUT CLIMATE
RESILIENCY](#)

PAVEDRAIN SYSTEMS

Font Size: [Share & Bookmark](#) [Feedback](#) [Print](#)

This is a pilot project of the City's Transportation and Mobility Department, and is the first application of its kind in South Florida. Installed at City Hall's Orchid Parking Lot, which is also a demonstration area for other sustainable technologies, the Pave Drain System is designed to mitigate the danger and effects of major stormwater flow over paved surfaces. It looks like any other tiled surface, but functions dramatically differently.



In order to evaluate the product's performance, the City performed a test in November, 2013. To simulate a major stormwater event, a City of Fort Lauderdale firetruck was loaded with 700 gallons of water which was then released onto the PaveDrain surface. In less than 60 seconds the water dispersed and was drained completely keeping the parking lot safe for pedestrians and vehicles, as well as demonstrating a

TRANSPORTATION & CONNECTIVITY

- BETTER STREETS FOR EVERYONE
- TRANSIT OPTIONS: LEAVING YOUR CAR AT HOME
- GREENER DRIVING AND PARKING

CYCLING OUR CITY

- BIKE PATH AND LANES
- BIKE SHARING
- OUT ON THE WATER
- GYR AT FXE

BIKE SHARING

Font Size: + - Share & Bookmark Feedback Print

Broward B-Cycle is a bike sharing program for residents, workers, and visitors. Bike sharing allows you to have a bicycle when you need it, and to give it back when you don't. There are sharing programs offered by private businesses throughout our region. It is an economical and convenient way to make trips that are too far to walk but too short to drive, and it leaves the bicycle maintenance and storage to someone else!

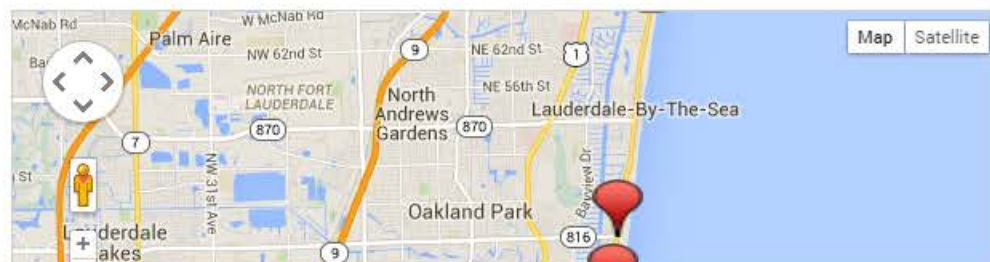
BROWARD B cycle

- Find a station near you.
- Start your membership.
- See a demo.



B-Cycle is different in that it allows you to pick up a bicycle from one many convenient station locations throughout the County, use the bicycle for as long as you need, and then return it to the same or any other station in the County. B-Cycles can be rented on a single use basis, and also through membership. As a member, you have added conveniences.

Broward B-Cycle opened in December, 2011. In the first year of operation, it helped us burn 3.4 million calories and kept 88,000 pounds of carbon dioxide from entering our atmosphere. There are now 15 stations in Fort Lauderdale.



GREEN YOUR ROUTINE

AT HOME AT WORK AT SCHOOL AROUND TOWN GREENER GOVERNMENT

CLIMATE RESILIENCY

WHY RESILIENCY NOW?

CLIMATE AND WEATHER IN FORT LAUDERDALE

THE STORY OF SEA LEVEL RISE IN FORT LAUDERDALE

HOW MUCH AND HOW FAST WILL THE SEA RISE?

WHY DOES SEA LEVEL MATTER?

HOW DO WE PREPARE FOR RISING SEAS?

TEMPERATURES OVER IN FORT LAUDERDALE

LEARN MORE ABOUT CLIMATE CHANGE IN OUR REGION

VISION 2035: WE ARE READY

INNOVATIVE PILOT PROGRAMS

FLOODPLAIN MANAGEMENT

HIGH TEMPERATURE LIVING: HEAT, FIRE & DROUGHT


Greener Government » Climate Resiliency » Climate and Weather in Fort Lauderdale » The Story of Sea Level Rise in Fort Lauderdale

Font Size: + - Share & Bookmark

Unified Sea Level Rise Projection

A unified projection by the Southeast Florida Regional Climate Change Compact shows a three to seven inch increase in sea level in Fort Lauderdale, FL.

ale.gov/at-school



Quick! Look out the window. Go ahead, do it now. What do you see? Buildings? distance? Whatever it is, whatever you see, take in for a minute the fact that it's here, go to school here, have friends here, or just come here for fun, this is our future. We'd like your help taking care of it. You, our youngest citizens, have found here you can make your home a little greener, teach your family a few earth and important changes at your school and other activities.

CLIMATE BASICS & BIG QUESTIONS

IS YOUR ROUTINE GREEN?

GYR DICTIONARY

TEACH GREEN

THE GREAT OUTDOORS

GETTING WHERE YOU NEED TO GO

CELEBRATE OUR EARTH

GREEN YOUR ROUTINE

AT HOME AT WORK AT SCHOOL AROUND TOWN GREENER GOVERNMENT

At Home

CLIMATE CHANGE AND YOUR HOME

Font Size: + - Share & Bookmark Feedback Print

If you read the popular press lately you might think that Floridians are doomed. In an effort to raise awareness of the very real climate issues our region is facing, everyone from news reporters to bloggers are sounding the alarm.

In the City of Fort Lauderdale, we believe it is important to gather as much information as possible and to focus on data coming out of universities and scientific institutions as well as the public agencies and private organizations that work with them. With good information you can make good decisions.

What does the current data mean for you and the home you own or rent?

GREEN YOUR COOLING ROUTINE

Our hot season is getting longer and may increase in temperature slightly. Check that your HVAC system is maintained properly, drink plenty of water, wear sunscreen, and know what to do in case of a heat emergency. Take a look at our High Temperature Living pages and our tips for Greening Your Cooling Routine. It's a guide to the steps you can take room by room to cool your home or apartment in ways that don't harm the planet. To cool our city, sign up for utility e-billing and get a free tree to plant in your yard or to donate to someone else.

Storms may increase in frequency and intensity. While we all work towards a greener future, we cannot ignore the risks associated with climate, especially rising seas. Being prepared is more important than ever. Be sure to review all of the preparedness information provided by our Emergency Management Department, develop an evacuation plan and check your insurance coverage. Also make sure to do your pre-hurricane season hazardous waste drop off and yard clean-up.

BE READY

Flooding in Fort Lauderdale will continue to be a

Benefits to Neighbors

- Locally relevant
- Multiple perspectives:
 - Challenges and goals
 - What's happening: Our work, news, results
 - Available services and programs
 - How to get involved
- Practical tips and instructions
- Directories, Apps, Maps, Incentives
- Direct link to Customer Service
- Better information... faster

A stylized, colorful illustration of a city skyline. In the foreground, there's a body of water with white birds. A green park area with palm trees and people is in the middle ground. The background features various skyscrapers and buildings under a bright sky with a sunburst effect. The entire scene is framed by a blue border at the top and bottom.

fortlauderdale.gov/gyr





Clean Team In Action

A few pictures of things we do



Currently...

We have 9 Custodians scheduled and working.
There are 3 Custodians being processed through HR.
Our schedule has given us 7 day coverage.
Our pressure washing team is being trained and going through the first run of each area.

Clean Team Personnel Assignments

	Su	M	T	W	Th	F	Sa
Riverwalk/2 St	1		1	1	1	1	1
Las Olas	1	1	1	1	1	1	1
A1A South	2	1	1	1	1	1	1
A1A North	1	1	1	1	1	1	1
17th St	1	1	1	1	1	1	1
Andrews/3rd		1	1	1	1	1	1
Broward	1	1	1	1	1	1	1
Galt Ocean Dr		1					

Hard at Work







Before and After





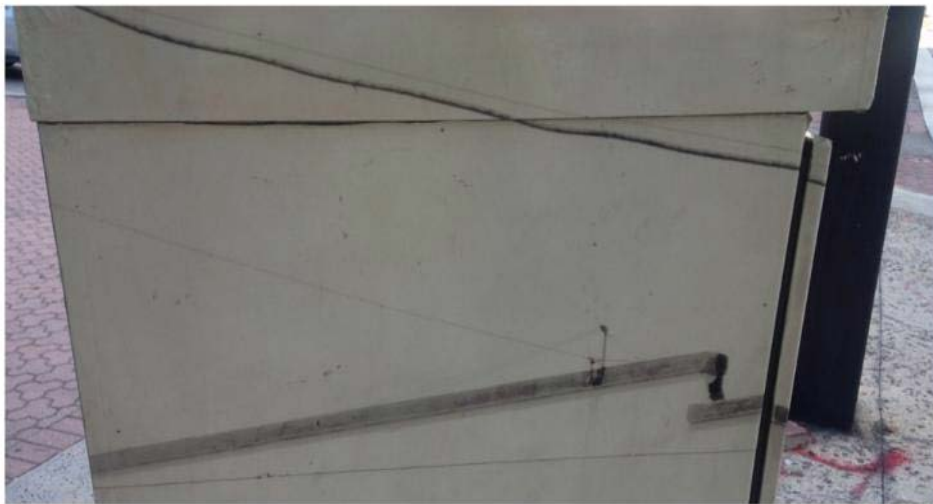
















and a few examples of the
things we find
and report back
to others...





Thanks!!!



-The Clean Team