



**FDOT** This Certifies that **HAROLD LARA** Has Completed a Florida Department of Transportation Approved Temporary Traffic Control (TTC) Advanced Course.

Date Expires: 05/20/2024  
Instructor: Juan Morales

Certificate # 62437  
FDOT Provider # 37

ATSSA  
Phone: 540-368-1701  
15 Riverside Parkway Ste.100  
Fredericksburg, VA  
www.atssa.com  
donna.clark@atssa.com

SAFER ROADS SAVE LIVES

DISTANCE BETWEEN SIGNS				Table I Device Spacing				Table II Buffer Space and Taper Length			
Speed	Spacing (ft)			Speed (mph)	Type of Sign Banner or Vertical Tapered Banner	Max. Distance Between Devices (ft)	Speed (mph)	Buffer Space		Taper Length	
	A	B	C					Dist. (ft)	L (ft)	Dist. (ft)	L (ft)
40 mph or less	200	200	200	25	None	25	155	125	50	425	600
45 mph	350	350	350	30	None	30	200	150	55	485	650
50 mph	500	500	500	35	None	35	250	245	60	570	720
55 mph or greater	2640	1640	1030	45	None	45	360	340	70	645	840

**General Traffic Plan (MOT) Notes:**

- Copy of approved 11 x 17 (TTC) MOT drawing to be maintained onsite by contractor at all times.
- No changes to TTC/MOT drawing without prior consent of the approving government agency and All American Barricades.
- Access shall be given to local residents, public transportation and emergency response vehicles.
- Accommodations to be made for pedestrian traffic should the work be in conflict with pedestrian traffic. Refer to the FDOT 2020-21 Standard Plans Index 102-660 for appropriate details.
- All MOT equipment to conform to the latest Manual On Uniform Traffic Control Devices (MUTCD)/FDOT APL with respect to approving agency permit provisions.
- Field conditions to be considered when placing MOT devices.
- FOR MOT Plan NOT TO SCALE. Refer to FDOT index 102-660 Series Distance Chart for device spacing and placement information.
- Posted Regulatory Speed Limit to be considered for device placement and distances.
- MOT device(s) placement on plans are an approximate and may be adjusted to suit existing field conditions.
- PLANS NOT TO SCALE.
- All American Barricades does not warrant the traffic control setup by others. The setup must be handled by personnel certified and licensed to handle traffic control.

Project Information		Company	
MULTI RACE			

Revisions			
No.	DATE	BY	DESCRIPTION

Legend	
	Barrel
	Traffic Control Officer
	Water Barrier
	Lane Identification + Direction of Traffic
	Type III Barricades

ALLAMERICAN BARRICADES, CORP.  
ATSSA CERTIFICATE # 62437

2300 SW 41ST AVENUE  
FT. LAUDERDALE, FL 33317  
1-888-4 SAFETY (888-472-3389)

www.barricades.com  
Designed by: HAROLD LARA  
email: harold@barricades.com

Date: 02/03/21  
Sheet: 1



**FDOT** This Certifies that **HAROLD LARA**  
 Has Completed a Florida Department of Transportation Approved Temporary Traffic Control (TTC) Advanced Course.  
 Date Expires: 05/20/2024 Certificate # 62437  
 Instructor: Juan Morales FDOT Provider # 37

**ATSSA**  
 Phone: 540-368-1701  
 15 Riverside Parkway Ste.100  
 Fredericksburg, VA  
 www.atssa.com  
 donna.clark@atssa.com

**SAFER ROADS SAVE LIVES**

DISTANCE BETWEEN SIGNS				Table I Device Spacing				Table II Buffer Space and Taper Length				
Speed	Spacing (ft)			Speed (mph)	Type of Sign Barricade or Water	Type of Sign Tapered Barricade	Parallel or Series	Speed (mph)	Buffer Space			Taper Length (ft) (Lateral Function) (W/S)
	A	B	C						Dist (ft)	L (ft)	W (ft)	
40 mph or less	200	200	200	25	155	125	60	425	600	60	425	600
45 mph	350	350	350	30	200	150	60	425	600	60	425	600
50 mph	500	500	500	35	240	245	60	570	720	60	570	720
55 mph or greater	1640	1640	1000	45	360	540	60	645	780	70	730	840

**General Traffic Plan (MOT) Notes:**

- Copy of approved 11 x 17 (TTC) MOT drawing to be maintained onsite by contractor at all times.
- Not obligated to TCO/MOT drawing without prior consent of the approving government agency and ATSSA American Barricades.
- Access shall be given to local residents, Public Transportation and emergency response vehicles.
- Accommodations to be made for pedestrian traffic should the work be in conflict with gormetry Refer to the FY2020-21 FDOT Standard Plans Index 102-660 for applications.
- All MOT equipment to conform to the latest Manual On Uniform Traffic Control Devices (MUTCD), FDOT APL with respect to approving agency permit provisions.
- Field conditions to be considered when placing MOT devices.
- TOP/MOT Plan NOT TO SCALE. Refer to FDOT index 102-660 Series Distance Charts for device spacing and placement information.
- Posted Regulatory Speed Limit to be considered for device placement and distances.
- MOT devices placement on ramps are an approximation and may be adjusted to suit existing field conditions.
- PLANS NOT TO SCALE.
- All American Barricades does not warrant the traffic control setup by others. This setup must be handled by personnel certified and licensed to handle traffic control.

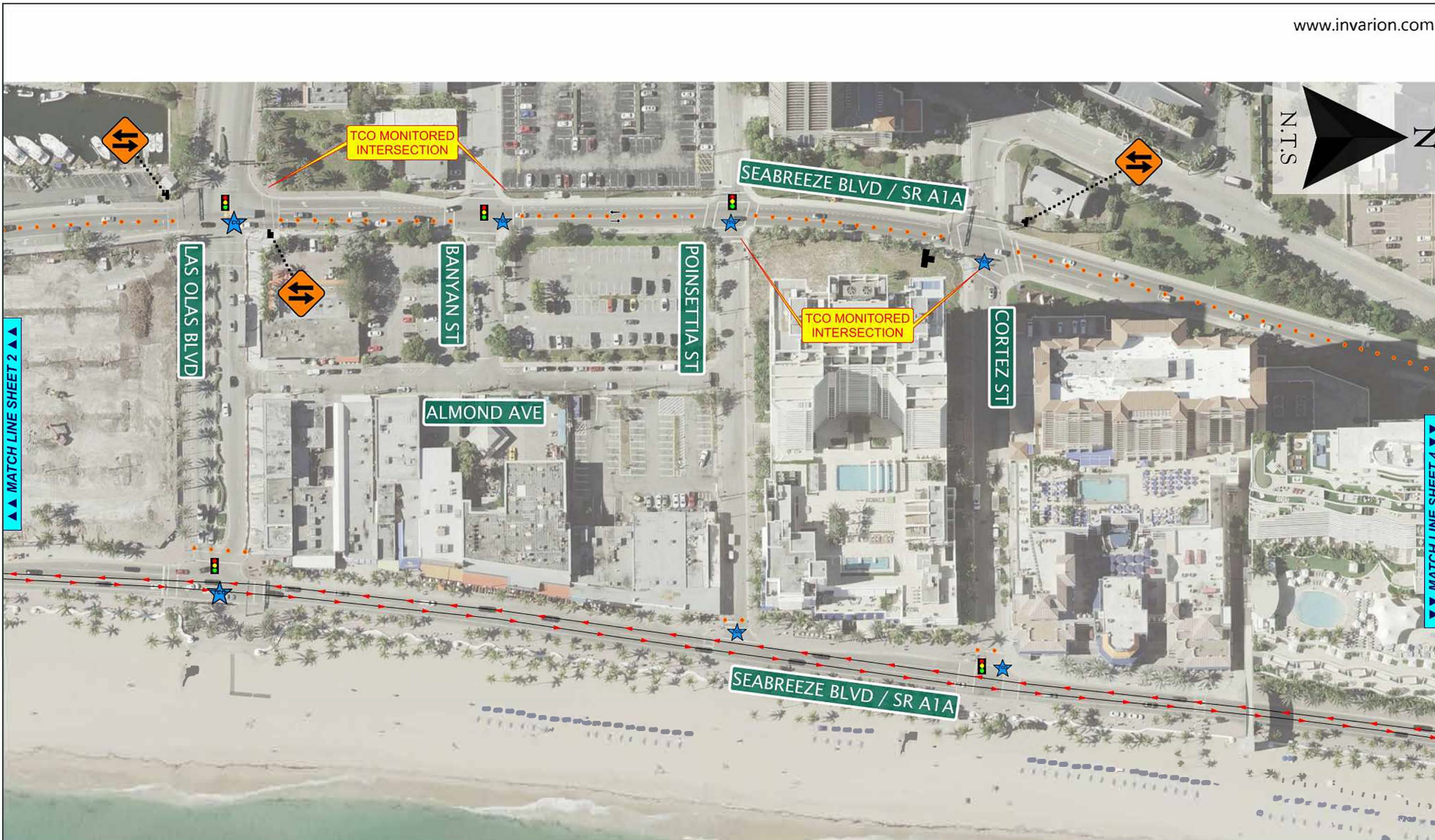
Project Information			Company		
MULTI RACE			ALLAMERICAN BARRICADES, CORP. ATSSA CERTIFICATE # 62437		
Revisions			2300 SW 41ST AVENUE FT. LAUDERDALE, FL 33317 1-888-4 SAFETY (888-472-3389)		
No.	DATE	BY	DESCRIPTION		

Legend	
	Barrel
	Traffic Control Officer
	Water Barrier
	Lane Identification + Direction of Traffic
	Type III Barricades

Designed by: HAROLD LARA  
 Date: 02/03/21

www.barricades.com  
 email: harold@barricades.com

Sheet : 2



**FDOT** This Certifies that **HAROLD LARA**  
 Has Completed a Florida Department of Transportation Approved Temporary Traffic Control (TTC) Advanced Course.  
 Date Expires: 05/20/2024 Certificate # 62437  
 Instructor: Juan Morales FDOT Provider # 37

ATSSA  
 Phone: 540-368-1701  
 15 Riverside Parkway Ste.100  
 Fredericksburg, VA  
 www.atssa.com  
 donna.clark@atssa.com

**ATSSA**  
 SAFER ROADS SAVE LIVES

DISTANCE BETWEEN SIGNS				Table I Device Spacing				Table II Buffer Space and Taper Length				
Speed	Spacing (ft)			Speed (mph)	Max. Distance Between Devices (ft)	Type of Sign	Type of Sign	Speed (mph)	Buffer Space		Taper Length	
	A	B	C						Dist. (ft)	L (ft)	Dist. (ft)	L (ft)
40 mph or less	200	250	200	25	155	125	50	425	600	175	1000	
45 mph	350	350	350	30	200	150	55	425	600	175	1000	
50 mph	500	500	500	35	250	245	60	570	720	225	1400	
55 mph or greater	2640	1640	1000	45	360	540	70	645	780	300	1840	

**General Traffic Plan (MOT) Notes:**

- Copy of approved 11 x 17 (TTC) MOT drawing to be maintained onsite by contractor at all times.
- No changes to TTC/MOT drawing without prior consent of the approving government agency and All American Barricades.
- Access shall be given to local residents, public transportation and emergency response vehicles.
- Accommodations to be made for pedestrian traffic ahead the work be in conflict with (partially) Refer to the FY2020-21 FDOT Standard Plans Index 102-660 for applications.
- All MOT equipment to conform to the latest Manual On Uniform Traffic Control Devices (MUTCD), FDOT APL with respect to approving agency permit provisions.
- Field conditions to be considered when placing MOT devices.
- TC/MOT Plan NOT TO SCALE. Refer to FDOT index 102-660 Series Distance Chart for device spacing and placement information.
- Posted Regulatory Speed Limit to be considered for device placement and distances.
- MOT device(s) placement on plans are an approximate and may be adjusted to suit existing field conditions.
- PLANS NOT TO SCALE.
- All American Barricades does not warrant the traffic control setup by others. This setup must be handled by personnel certified and licensed to handle traffic control.

Project Information			Company		
MULTI RACE			ALL AMERICAN BARRICADES, CORP. ATSSA CERTIFICATE # 62437		
Revisions			Legend		
No.	DATE	BY	DESCRIPTION		

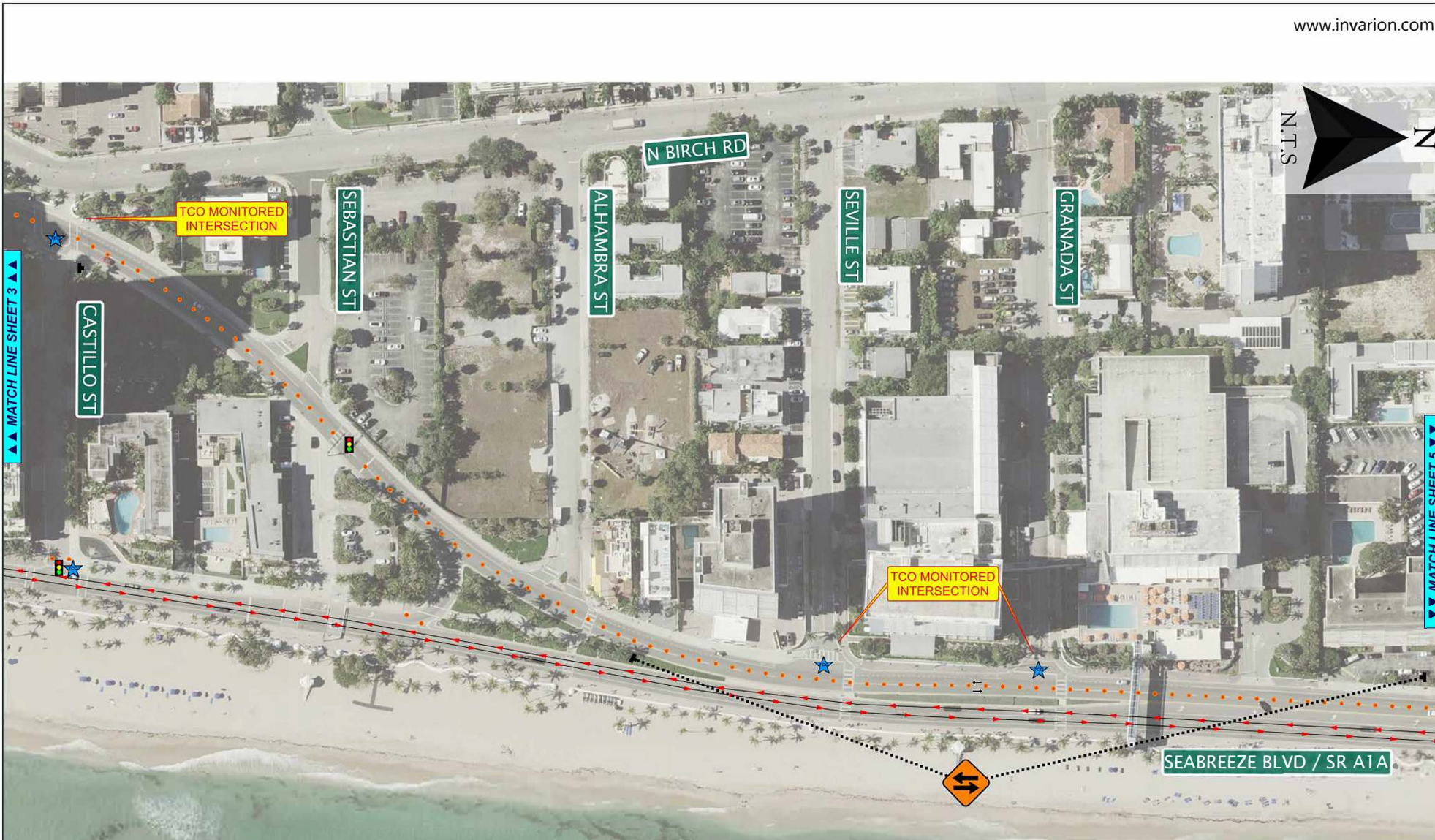
**Legend**

- Barrel
- Traffic Control Officer
- Water Barrier
- Lane Identification + Direction of Traffic
- Type III Barricades

**ALL AMERICAN BARRICADES**  
 2300 SW 41ST AVENUE  
 FT. LAUDERDALE, FL 33317  
 1-888-4 SAFETY (888-472-3389)

Designed by: HAROLD LARA  
 www.barricades.com  
 email: harold@barricades.com

Date: 02/03/21 Sheet : 3



**FDOT** This Certifies that **HAROLD LARA**  
 Has Completed a Florida Department of Transportation Approved  
 Temporary Traffic Control (TTC) Advanced Course.  
 Date Expires: 05/20/2024 Certificate # 62437  
 Instructor: Juan Morales FDOT Provider # 37

ATSSA  
 Phone: 540-368-1701  
 15 Riverside Parkway Ste.100  
 Fredericksburg, VA  
 www.atssa.com  
 donna.clark@atssa.com

**ATSSA**  
 SAFER ROADS SAVE LIVES

DISTANCE BETWEEN SIGNS				Table I Device Spacing				Table II Buffer Space and Taper Length					
Speed	Spacing (ft)			Speed (mph)	Type III Sign Barrel or Water Barrier	Type III Sign Barrel or Water Barrier	Type III Sign Barrel or Water Barrier	Type III Sign Barrel or Water Barrier	Speed (mph)	Buffer Space		Taper Length	
	A	B	C							Dist (ft)	L (ft)	Dist (ft)	L (ft)
40 mph or less	200	250	200	25	155	125	50	425	600	55	425	600	
45 mph	320	350	350	30	200	150	60	425	600	55	425	600	
50 mph	500	500	500	35	250	245	60	570	720	65	645	780	
55 mph or greater	2640	1640	1000	35 to 75	30	50	100	45	360	540	70	730	840

**General Traffic Plan (MOT) Notes:**

- Copy of approved 11 x 17 (TTC) MOT drawing to be maintained onsite by contractor at all times.
- No changes to TCMOT drawing without prior consent of the approving government agency and All American Barricades.
- Access shall be given to local residents, public transportation and emergency response vehicles.
- Accommodations to be made for pedestrian traffic should the work be in conflict with government's Refer to the FY2020-21 FDOT Standard Plans Index 102-660 for applications.
- All MOT equipment to conform to the latest Manual On Uniform Traffic Control Devices (MUTCD), FDOT, APL with respect to approving agency permit provisions.
- Field conditions to be considered when placing MOT devices.
- TCMOT Plan NOT TO SCALE. Refer to FDOT index 102-660 Series Distance Chart for device spacing and placement information.
- Posted Regulatory Speed Limit to be considered for device placement and distances.
- MOT devices placement on plans are an approximation and may be adjusted to suit existing field conditions.
- All American Barricades does not warrant the traffic control setup by others. This setup must be handled by personnel certified and licensed to handle traffic control.

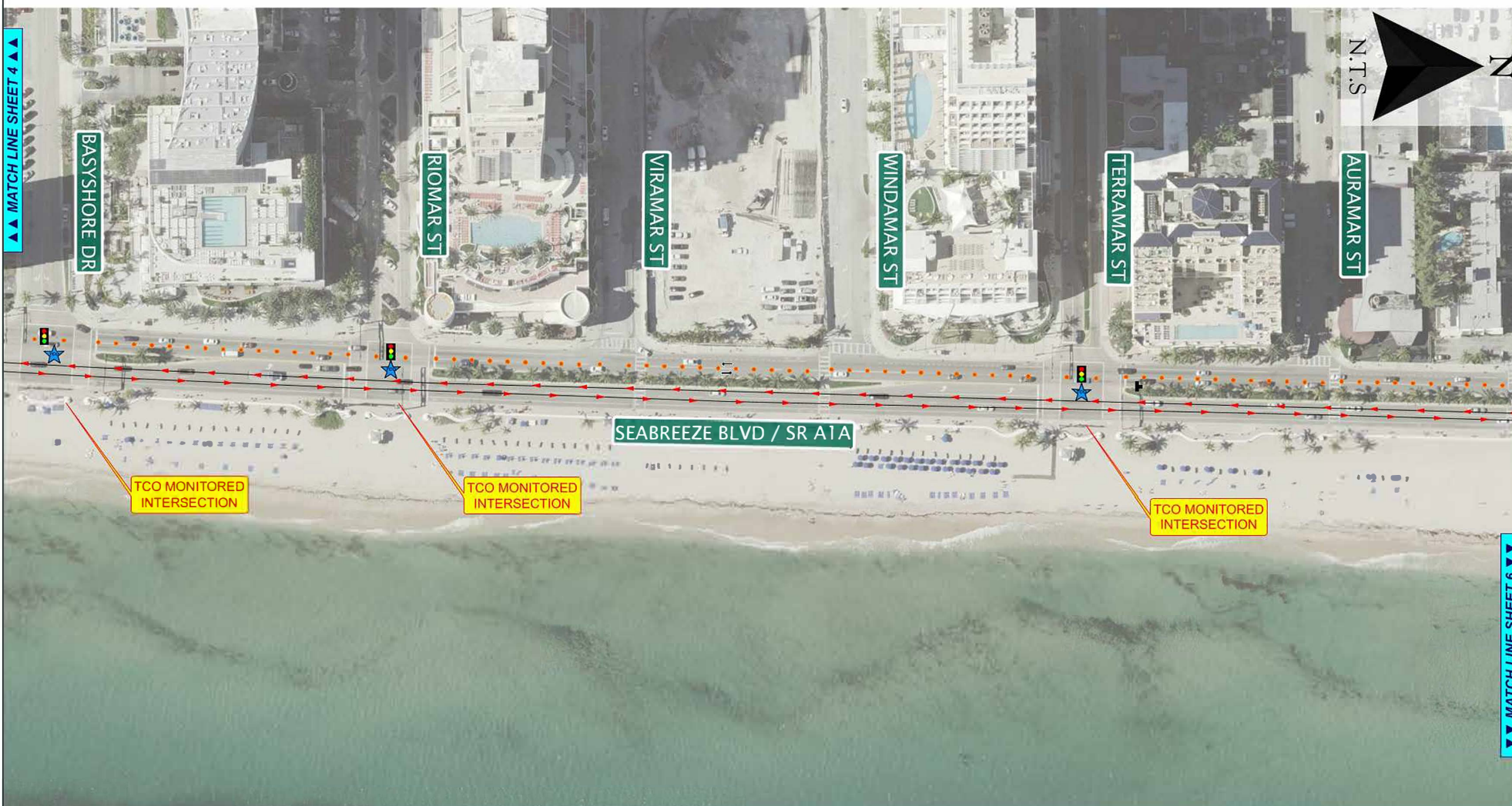
Project Information			Company		
MULTI RACE			ALL AMERICAN BARRICADES, CORP. ATSSA CERTIFICATE # 62437		
Revisions			Legend		
No.	DATE	BY	DESCRIPTION		

**Legend**

- Barrel
- Traffic Control Officer
- Water Barrier
- Lane Identification + Direction of Traffic
- Type III Barricades

**ALL AMERICAN BARRICADES, CORP.**  
 ATSSA CERTIFICATE # 62437  
 2300 SW 41ST AVENUE  
 FT. LAUDERDALE, FL 33317  
 1-888-4 SAFETY (888-472-3389)  
 www.barricades.com  
 email: harold@barricades.com

Designed by: HAROLD LARA  
 Date: 02/03/21  
 Sheet: 4



**FDOT** This Certifies that **HAROLD LARA**  
 Has Completed a Florida Department of Transportation Approved Temporary Traffic Control (TTC) Advanced Course.  
 Date Expires: 05/20/2024 Certificate # 62437  
 Instructor: Juan Morales FDOT Provider # 37

ATSSA  
 Phone: 540-368-1701  
 15 Riverside Parkway Ste.100  
 Fredericksburg, VA  
 www.atssa.com  
 donna.clark@atssa.com

**ATSSA**  
 SAFER ROADS SAVE LIVES

DISTANCE BETWEEN SIGNS				Table I Device Spacing				Table II Buffer Space and Taper Length								
Speed	Spacing (ft)			Speed (mph)	Max. Distance Between Devices (ft)	Type of Sign	Type of Sign	Type of Sign	Buffer Space (ft)				Taper Length (ft)			
	A	B	C						Speed (mph)	Dist. (ft)	L (ft)	M (ft)	Speed (mph)	Dist. (ft)	L (ft)	M (ft)
40 mph or less	200	200	200	25	155	125	50	425	600	50	425	600	50	425	600	
45 mph	320	350	350	30	200	150	60	485	650	60	485	650	60	485	650	
50 mph	500	500	500	35	240	245	70	570	720	70	570	720	70	570	720	
55 mph or greater	2640	1640	1000	55	360	540	100	840	1840	100	840	1840	100	840	1840	

**General Traffic Plan (MOT) Notes:**

- Copy of approved 11 x 17 (TTC) MOT drawing to be maintained on-site by contractor at all times.
- No changes to TCMOT drawing without prior consent of the approving government agency and ATSSA American Barricades.
- Access shall be given to local residents, public transportation and emergency response vehicles.
- Accommodations to be made for pedestrian traffic should the work be in conflict with golf carts/ATVs. Refer to the FY2020-21 FDOT Standard Plans Index 102-660 for specifications.
- All MOT equipment to conform to the latest Manual On Uniform Traffic Control Devices (MUTCD), FDOT APL with respect to approving agency permit provisions.
- Field conditions to be considered when placing MOT devices.
- TCMOT Plan NOT TO SCALE. Refer to FDOT index 102-660 Series Distance Charts for device spacing and placement information.
- Posted Regulatory Speed Limit to be considered for device placement and distances.
- MOT devices placement on plans are an approximate and may be adjusted to suit existing field conditions.
- PLANS NOT TO SCALE.
- All American Barricades does not warrant the traffic control setup by others. This setup must be handled by personnel certified and licensed to handle traffic control.

Project Information			Company		
MULTI RACE			ALL AMERICAN BARRICADES, CORP. ATSSA CERTIFICATE # 62437		
Revisions			2300 SW 41ST AVENUE FT. LAUDERDALE, FL 33317 1-888-4 SAFETY (888-472-3389)		
No.	DATE	BY	DESCRIPTION		

**Legend**

- Barrel
- Traffic Control Officer
- Water Barrier
- Lane Identification + Direction of Traffic
- Type III Barricades

Designed by: HAROLD LARA  
 Date: 02/03/21

www.barricades.com  
 email: harold@barricades.com

Sheet : 5



**FDOT** This Certifies that **HAROLD LARA**  
 Has Completed a Florida Department of Transportation Approved  
 Temporary Traffic Control (TTC) Advanced Course.  
 Date Expires: 05/20/2024 Certificate # 62437  
 Instructor: Juan Morales FDOT Provider # 37

ATSSA  
 Phone: 540-368-1701  
 15 Riverside Parkway Ste.100  
 Fredericksburg, VA  
 www.atssa.com  
 donna.clark@atssa.com

**ATSSA**  
 SAFER ROADS SAVE LIVES

DISTANCE BETWEEN SIGNS				Table I Device Spacing				Table II Buffer Space and Taper Length						
Speed	Spacing (ft)			Speed (mph)	Type of Sign Barricade or Water	Max. Distance Between Devices (ft)	Type of Sign Barricade or Water	Buffer Space (ft)	Taper Length (ft)	Speed (mph)	Buffer Space (ft)	Taper Length (ft)		
	A	B	C										Dist. (ft)	L (ft)
40 mph or less	200	200	200	25	155	125	50	425	600	50	425	600		
45 mph	250	250	250	30	200	150	55	485	650	55	485	650		
50 mph	300	300	300	35	250	245	60	570	720	60	570	720		
55 mph or greater	2640	1640	1000	35 to 45	25	50	30	50	40	305	320	65	645	780
				55 to 75	25	50	50	100	45	360	540	70	730	840

**General Traffic Plan (MOT) Notes:**

- Copy of approved 11 x 17 (TTC) MOT drawing to be maintained on-site by contractor at all times.
- Not obligated to TCMOT drawing without prior consent of the approving government agency and All American Barricades.
- Access shall be given to local residents, public transportation and emergency response vehicles.
- Accommodations to be made for pedestrian traffic ahead the work be in conflict with gommoties) Refer to the FY2020-21 FDOT Standard Plans Index 102-680 for applications.
- All MOT equipment to conform to the latest Manual On Uniform Traffic Control Devices (MUTCD)/FDOT APL with respect to approving agency permit provisions.
- Field conditions to be considered when placing MOT devices.
- TCMOT Plan NOT TO SCALE. Refer to FDOT index 102-680 Series Distance Chart for device spacing and placement information.
- Posted Regulatory Speed Limit to be considered for device placement and distances.
- MOT devices placed on plans are an approximate and may be adjusted to suit existing field conditions.
- ALL PLANS NOT TO SCALE.
- All American Barricades does not warrant the traffic control setup by others. This setup must be handled by personnel certified and licensed to handle traffic control.

Project Information			Company		
MULTI RACE			ALL AMERICAN BARRICADES, CORP. ATSSA CERTIFICATE # 62437		
Revisions			Legend		
No.	DATE	BY	Legend		
			<ul style="list-style-type: none"> <li>Barrel</li> <li>Traffic Control Officer</li> <li>Water Barrier</li> </ul>	<ul style="list-style-type: none"> <li>Lane Identification + Direction of Traffic</li> <li>Type III Barricades</li> </ul>	
			ALL AMERICAN BARRICADES, CORP. 2300 SW 41ST AVENUE FT. LAUDERDALE, FL 33317 1-888-4 SAFETY (888-472-3389)		
			Designed by: HAROLD LARA www.barricades.com email: harold@barricades.com		

Date: 02/03/21

Sheet : 6



▲▲ MATCH LINE SHEET 6 ▲▲

▼▼ MATCH LINE SHEET 8 ▼▼

**FDOT** This Certifies that **HAROLD LARA** Has Completed a Florida Department of Transportation Approved Temporary Traffic Control (TTC) Advanced Course.

Date Expires: 05/20/2024 Certificate # 62437 Instructor: Juan Morales FDOT Provider # 37

ATSSA Phone: 540-358-1701 15 Riverside Parkway Ste. 100 Fredericksburg, VA www.atssa.com dorina.clark@atssa.com

**ATSSA** SAFER ROADS SAVE LIVES

DISTANCE BETWEEN SIGNS				Table I Device Spacing				Table II Buffer Space and Taper Length						
Speed	Spacing (ft)			Speed (mph)	Type of Sign	Max. Distance Between Devices (ft)	Buffer Space (ft)	Taper Length (ft)			Buffer Space (ft)	Taper Length (ft)		
	A	B	C					L	W	L		W		
40 mph or less	200	200	200	25	Advance Warning	150	50	150	150	50	150	150	50	150
45 mph	350	350	350	30	Advance Warning	200	60	200	200	60	200	200	60	200
50 mph	500	500	500	35	Advance Warning	250	70	250	250	70	250	250	70	250
55 mph or greater	640	640	1000	40	Advance Warning	300	80	300	300	80	300	300	80	300

**General Traffic Plan (MOT) Notes:**

- Copy of approved 11 x 17 (TTC) MOT drawing to be maintained onsite by contractor at all times.
- No changes to TCMOT drawing without prior consent of the approving government agency and All American Barricades.
- Access shall be given to local residents, public transportation and emergency response vehicles.
- Accommodations to be made for pedestrian traffic should the work be in conflict with pedestrian traffic. Refer to the FDOT 2003-21 FDOT Standard Plans Index 102-860 for applications.
- All MOT equipment to conform to the latest Manual On Uniform Traffic Control Devices (MUTCD)/FDOT APL with respect to approving agency permit provisions.
- Field conditions to be considered when placing MOT devices.
- TCMOT Plan NOT TO SCALE. Refer to FDOT index 102-860 Street Distance Chart for device spacing and placement information.
- Posted Regulatory Speed Limit to be considered for device placement and distances.
- MOT device(s) placement on plans are an approximation and may be adjusted to suit existing field conditions.
- PLANS NOT TO SCALE.
- All American Barricades does not warrant the traffic control setup by others. This setup must be handled by personnel certified and licensed to handle traffic control.

Project Information			Company		
MULTI RACE					
Revisions					
No.	DATE	BY	DESCRIPTION		

Legend	
	Barrel
	Traffic Control Officer
	Water Barrier
	Lane Identification + Direction of Traffic
	Type III Barricades

**ALL AMERICAN BARRICADES, CORP.**  
ATSSA CERTIFICATE # 62437

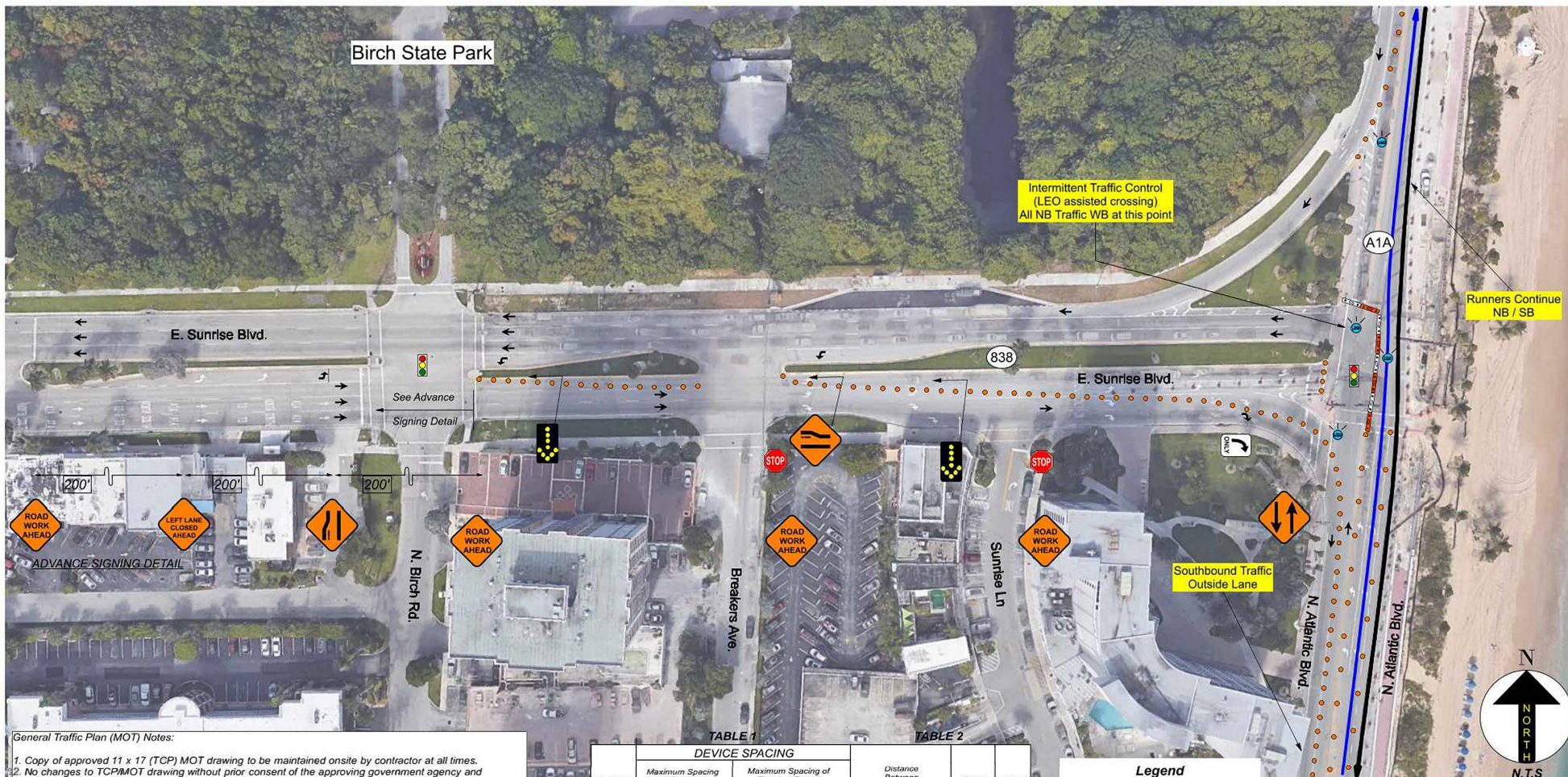
2300 SW 41ST AVENUE  
FT. LAUDERDALE, FL 33317  
1-888-4 SAFETY (888-472-3389)

www.barricades.com  
email: harold@barricades.com

Designed by: HAROLD LARA

Date: 02/03/21

Sheet : 7a



**General Traffic Plan (MOT) Notes:**

1. Copy of approved 11 x 17 (TCP) MOT drawing to be maintained onsite by contractor at all times.
2. No changes to TCP/MOT drawing without prior consent of the approving government agency and All American Barricades.
3. Access shall be given to local residents, public transportation and emergency response vehicles.
4. Accommodations to be made for Pedestrian traffic should the work be in conflict with pathway(s). Refer to the FY 2020-21 FDOT Design Standards Index 102-560 for specifications.
5. All MOT equipment to conform to the latest Manual On Uniform Traffic Control Devices (MUTCD), FDOT, APL with respect to approving agency permit provisions.
6. Field conditions to be considered when placing MOT devices.
7. TCP/MOT Plan NOT TO SCALE. Refer to FDOT Index 102-600 Series Distance Charts for device spacing and placement information.
8. Posted Regulatory Speed Limit to be considered for device placement and instances.
9. MOT device(s) placement on plans are an approximate and may be adjusted to suit existing field conditions.
10. PLANS NOT TO SCALE.

Posted Speed	DEVICE SPACING				Distance Between Signs				Buffer Space	Taper Space
	Maximum Spacing of Cones or Tubular Markers		Maximum Spacing of Type I or Type II Barricades/Panels/Drums							
	On a Taper	On a Tangent	On a Taper	On a Tangent	A	B	C	D		
25	25'	50'	25'	50'	200'	200'	200'	100'	155'	125'
30	25'	50'	25'	50'	200'	200'	200'	100'	200'	180'
35	25'	50'	25'	50'	200'	200'	200'	100'	250'	245'
40	25'	50'	25'	50'	200'	200'	200'	100'	305'	320'
45	25'	50'	25'	50'	350'	350'	350'	175'	360'	540'
50	25'	50'	25'	100'	500'	500'	500'	250'	425'	600'
55	25'	50'	25'	100'	2540'	1500'	1000'	500'	495'	680'
60	25'	50'	25'	100'	2640'	1500'	1000'	500'	570'	720'
65	25'	50'	25'	100'	2640'	1500'	1000'	500'	645'	780'
70	25'	50'	25'	100'	2640'	1500'	1000'	500'	730'	840'

**Legend**

- Delineator
- ⊠ Existing Signalized Intersection
- Lane Identification + Direction of Traffic
- ↶ Left Turn Movement
- Ⓜ LEO (Law Enforcement Officer)
- ↷ Right Turn Movement
- Water Barriers 2

**FDOT** This Certifies that **ARIEL GARCES** Has Completed a Florida Department of Transportation Approved Temporary Traffic Control (TTC) Advanced (Reflex) Course. Date Expires: 02/10/2024 Certificate # 60071 Instructor: Richard Carter, YDOT Provider # 37

**ATSSA** Phone: 540-368-1701 15 Riverside Parkway Ste 100 Fredericksburg, VA www.atssa.com donna.clark@atssa.com

**SAFER ROADS SAVE LIVES**

DATE	REVISIONS DESCRIPTION	DATE

**ARIEL GARCES**  
 ATSSA CERTIFICATE #60071  
 ALL AMERICAN BARRICADES, CORP.  
 2300 SW 41ST AVENUE  
 FT. LAUDERDALE, FL 33317  
 1-888-4 SAFETY (888-472-3389)  
 www.barricades.com / email: ariel@barricades.com



**EXCLUSIVE SPORTS MARKETING**

ROAD NO. / CDD RDINATES COUNTY PROJECT NO.

BROWARD COUNTY

**DATE: 02/26/2021 TCP DESIGNER: ARIEL GARCES ATSSA #: 60071**

**PROJECT NAME**  
 2021 FT. LAUDERDALE HALF-FULL MARATHON  
 SR A1A & E. SUNRISE BLVD.  
 FT. LAUDERDALE, FL

**SHEET NO.**  
 7b





▲▲ MATCH LINE SHEET 7a ▲▲

▲▲ MATCH LINE SHEET 9 ▲▲

**FDOT** This Certifies that **HAROLD LARA**  
 Has Completed a Florida Department of Transportation Approved Temporary Traffic Control (TTC) Advanced Course.  
 Date Expires: 05/20/2024 Certificate # 62437  
 Instructor: Juan Morales FDOT Provider # 37

**ATSSA**  
 Phone: 540-358-1701  
 15 Riverside Parkway Ste. 100  
 Fredericksburg, VA  
 www.atssa.com  
 donna.clark@atssa.com

**SAFER ROADS SAVE LIVES**

DISTANCE BETWEEN SIGNS				Table I Device Spacing		Table II Buffer Space and Taper Length						
Speed	Spacing (ft)			Speed (mph)	Type of Sign (Barricade or Water)	Max. Distance Between Devices (ft)	Buffer Space (ft)			Taper Length (ft)		
	A	B	C				Dist. (ft)	L (ft)	M (ft)	Dist. (ft)	L (ft)	M (ft)
40 mph or less	200	250	200	25	155	125	30	425	600	425	600	
45 mph	350	350	350	35	250	245	35	425	600	425	600	
50 mph	500	500	500	40	305	300	40	570	720	570	720	
55 mph or greater	2640	1848	1005	55	500	500	45	730	960	730	960	

**General Traffic Plan (MOT) Notes:**

- Copy of approved 11 x 17 (TTC) MOT drawing to be maintained on-site by contractor at all times.
- No changes to TCR/MOT drawing without prior consent of the approving government agency and ATSSA American Barricades.
- Access shall be given to local residents, public transportation and emergency response vehicles.
- Accommodations to be made for pedestrian traffic should the work be in conflict with pathways. Refer to the FY2020-21 FDOT Standard Plans Index 102-660 for applications.
- All MOT equipment to conform to the latest Manual On Uniform Traffic Control Devices (MUTCD), FDOT, APL with respect to approving agency permit provisions.
- Field conditions to be considered when placing MOT devices.
- TCR/MOT Plan NOT TO SCALE. Refer to FDOT index 102-660 Series Distance Chart for device spacing and placement information.
- Posted Regulatory Speed Limit to be considered for device placement and distances.
- MOT device(s) placement on plans are an approximation and may be adjusted as well as other field conditions.
- PLANS NOT TO SCALE.
- All American Barricades does not warrant the traffic control setup by others. The setup must be handled by personnel certified and licensed to handle traffic control.

Project Information			Company		
MULTI RACE					
Revisions					
No.	DATE	BY	DESCRIPTION		

**Legend**

- Barrel
- Traffic Control Officer
- Water Barrier
- Lane Identification + Direction of Traffic
- Type III Barricades

**ALL AMERICAN BARRICADES, CORP.**  
 ATSSA CERTIFICATE # 62437  
 2300 SW 41ST AVENUE  
 FT. LAUDERDALE, FL 33317  
 1-888-4 SAFETY (888-472-3389)

Designed by: **HAROLD LARA**  
 email: harold@barricades.com

Date: 02/03/21 Sheet : 8



**FDOT** This Certifies that **HAROLD LARA**  
 Has Completed a Florida Department of Transportation Approved  
 Temporary Traffic Control (TTC) Advanced Course.  
 Date Expires: 05/20/2024 Certificate # 62437  
 Instructor: Juan Morales FDOT Provider # 37

**ATSSA**  
 Phone: 540-358-1701  
 15 Riverside Parkway Ste. 100  
 Fredericksburg, VA  
 www.atssa.com  
 donna.clark@atssa.com

**SAFER ROADS SAVE LIVES**

DISTANCE BETWEEN SIGNS				Table I Device Spacing				Table II Buffer Space and Taper Length							
Speed	Spacing (ft)			Speed (mph)	Type of Sign Barricade or Water	Max. Distance Between Devices (ft)	Type of Space Taper or Buffer	Buffer Space		Taper Length		Buffer Space		Taper Length	
	A	B	C					Dist. (ft)	L (ft)	Dist. (ft)	L (ft)	Dist. (ft)	L (ft)		
40 mph or less	200	200	200	25	155	125	30	200	150	55	425	600	55	425	600
45 mph	320	320	320	30	200	150	35	250	245	60	570	720	65	645	780
50 mph	500	500	500	35	250	245	40	305	300	70	730	940	75	730	940
55 mph or greater	2640	1640	1000	50	375	300	45	360	540	100	1060	1360	100	1060	1360

**General Traffic Plan (MOT) Notes:**

- City of approved 11 x 17 (TTC) MOT drawing to be maintained onsite by contractor at all times.
- No changes to TCO/MOT drawing without prior consent of the approving government agency and All American Barricades.
- Access shall be given to local residents, public transportation and emergency response vehicles.
- Accommodations to be made for Freedom of Information Act requests.
- Standard Plans Refer to 102-680 for approval.
- All MOT equipment to conform to the latest Manual On Uniform Traffic Control Devices (MUTCD), FDOT, APL with respect to approving agency permit provisions.
- Field conditions to be considered when placing MOT devices.
- TCP/MOT Plan NOT TO SCALE. Refer to FDOT index 102-600 Series Distance Chart for device spacing and placement information.
- Posted Regulatory Speed Limit to be considered for device placement and distances.
- MOT devices (as shown on plans) are an approximate and may be adjusted to suit existing field conditions.
- PLANS NOT TO SCALE.
- All American Barricades does not warrant the traffic control setup by others. This setup must be handled by personnel certified and licensed to handle traffic control.

Project Information			Company		
MULTI RACE			ALL AMERICAN BARRICADES, CORP. ATSSA CERTIFICATE # 62437		
Revisions			Legend		
No.	DATE	BY	DESCRIPTION		

**Legend**

- Barrel
- Traffic Control Officer
- Water Barrier
- Lane Identification + Direction of Traffic
- Type III Barricades

**ALL AMERICAN BARRICADES, CORP.**  
 ATSSA CERTIFICATE # 62437  
 2300 SW 41ST AVENUE  
 FT. LAUDERDALE, FL 33317  
 1-888-4 SAFETY (888-472-3389)

Designed by: **HAROLD LARA**  
 email: harold@barricades.com

Date: 02/03/21 Sheet : 9



**FDOT** This Certifies that **HAROLD LARA**  
 Has Completed a Florida Department of Transportation Approved Temporary Traffic Control (TTC) Advanced Course.  
 Date Expires: 05/20/2024 Certificate # 62437  
 Instructor: Juan Morales FDOT Provider # 37

**ATSSA**  
 Phone: 540-368-1701  
 15 Riverside Parkway Ste.100  
 Fredericksburg, VA  
 www.atssa.com  
 donna.clark@atssa.com

**ATSSA**  
 SAFER ROADS SAVE LIVES

DISTANCE BETWEEN SIGNS				Table I Device Spacing				Table II Buffer Space and Taper Length					
Speed	Spacing (ft)			Speed (MPH)	Control	Type or Spacing	Type or Spacing	Speed (mph)	Buffer Space		Taper Length		
	A	B	C						Dist (ft)	Dist (ft)	Dist (ft)	Dist (ft)	
40 mph or less	200	200	200	40	Flashed	100	100	25	155	125	80	425	600
45 mph	350	350	350	45	Flashed	100	100	30	200	150	85	485	650
50 mph	500	500	500	50	Flashed	100	100	35	250	245	90	570	720
55 mph or greater	1640	1640	1000	55 to 75	Flashed	100	100	40	305	320	95	645	780
				75 to 85	Flashed	100	100	45	360	340	100	730	840

**General Traffic Plan (MOT) Notes:**

- City of approved 11 x 17 (TTC) MOT drawing to be maintained onsite by contractor at all times.
- No changes to TCR/MOT drawing without prior consent of the approving government agency and All American Barricades.
- Access shall be given to local residents, public transportation and emergency response vehicles.
- Accommodations to be made for pedestrian traffic should the work be in conflict with pathways) Refer to the FY2020-21 FDOT Standard Plans Index 102-660 for applications.
- All MOT equipment to conform to the latest Manual On Uniform Traffic Control Devices (MUTCD)/FDOT APL with respect to approving agency permit provisions.
- Field conditions to be considered when placing MOT devices.
- TCR/MOT Plan NOT TO SCALE. Refer to FDOT index 102-660 Series Distance Chart for device spacing and placement information.
- Posted Regulatory Speed Limit to be considered for device placement and distances.
- MOT device(s) placement on plans are an approximation and may be adjusted to suit working field conditions.
- PLANS NOT TO SCALE.
- All American Barricades does not warrant the traffic control setup by others. This setup must be handled by personnel certified and licensed to handle traffic control.

Project Information			Company		
MULTI RACE			ALLAMERICAN BARRICADES, CORP. ATSSA CERTIFICATE # 62437		
Revisions			Legend		
No.	DATE	BY	DESCRIPTION		

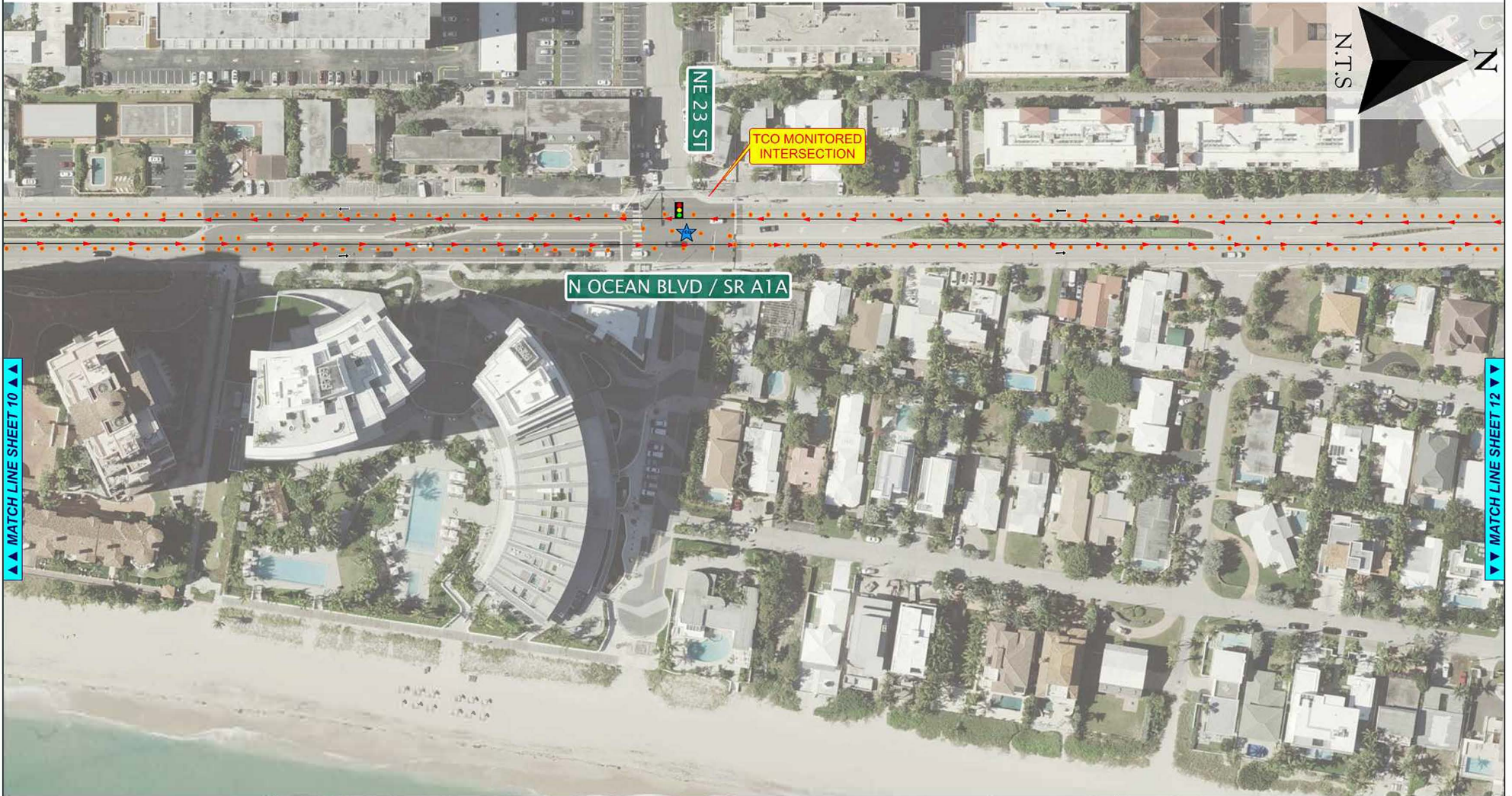
**Legend**

- Barrel
- Traffic Control Officer
- Water Barrier
- Lane Identification + Direction of Traffic
- Type III Barricades

**ALLAMERICAN BARRICADES, CORP.**  
 ATSSA CERTIFICATE # 62437  
 2300 SW 41ST AVENUE  
 FT. LAUDERDALE, FL 33317  
 1-888-4 SAFETY (888-472-3389)

Designed by: HAROLD LARA  
 www.barricades.com  
 email: harold@barricades.com

Date: 02/03/21 Sheet : 10



**FDOT** This Certifies that **HAROLD LARA**  
 Has Completed a Florida Department of Transportation Approved Temporary Traffic Control (TTC) Advanced Course.  
 Date Expires: 05/20/2024 Certificate # 62437  
 Instructor: Juan Morales FDOT Provider # 37

ATSSA Phone: 540-368-1701  
 15 Riverside Parkway Ste.100  
 Fredericksburg, VA  
 www.atssa.com  
 donna.clark@atssa.com



**ATSSA**  
 SAFER ROADS SAVE LIVES

DISTANCE BETWEEN SIGNS				Table I Device Spacing				Table II Buffer Space and Taper Length							
Speed	Spacing (ft)			Speed (mph)	Type of Sign Barricade or Water	Max. Distance Between Devices (ft)	Type of Sign Barricade or Water	Buffer Space		Taper Length		Buffer Space		Taper Length	
	A	B	C					Dist. (ft)	Angle (deg)	Dist. (ft)	Angle (deg)	Dist. (ft)	Angle (deg)		
40 mph or less	200	200	200	25	155	125	30	100	150	60	425	600	55	425	600
45 mph	250	250	250	30	200	150	35	200	245	60	570	720	60	570	720
50 mph	300	300	300	35	250	245	40	305	320	65	645	780	65	645	780
55 mph or greater	2640	1640	1030	45	360	340	45	360	440	70	730	840	70	730	840

**General Traffic Plan (MOT) Notes:**

- City of approved 11 x 17 (TTC) MOT drawing to be maintained onsite by contractor at all times.
- No changes to TTC/MOT drawing without prior consent of the approving government agency and All American Barricades.
- Access shall be given to local residents, public transportation and emergency response vehicles.
- Accommodations to be made for pedestrian traffic should the work be in conflict with pathways. Refer to the FY2020-21 FDOT Standard Plans Index 102-660 for applications.
- All MOT equipment to conform to the latest Manual On Uniform Traffic Control Devices (MUTCD)/FDOT APT, with respect to approving agency permit provisions.
- Field conditions to be considered when placing MOT devices.
- TCP/MOT Plan NOT TO SCALE. Refer to FDOT index 102-600 Series Distance Charts for device spacing and placement information.
- Posted Regulatory Speed Limit to be considered for device placement and distances.
- MOT device(s) placement on plans are an approximate and may be adjusted to suit existing field conditions.
- PLANS NOT TO SCALE.
- All American Barricades does not warrant the traffic control setup by others. This setup must be handled by personnel certified and licensed to handle traffic control.

Project Information			Company		
MULTI RACE			ALL AMERICAN BARRICADES, CORP. ATSSA CERTIFICATE # 62437		
Revisions			Legend		
No.	DATE	BY	DESCRIPTION		

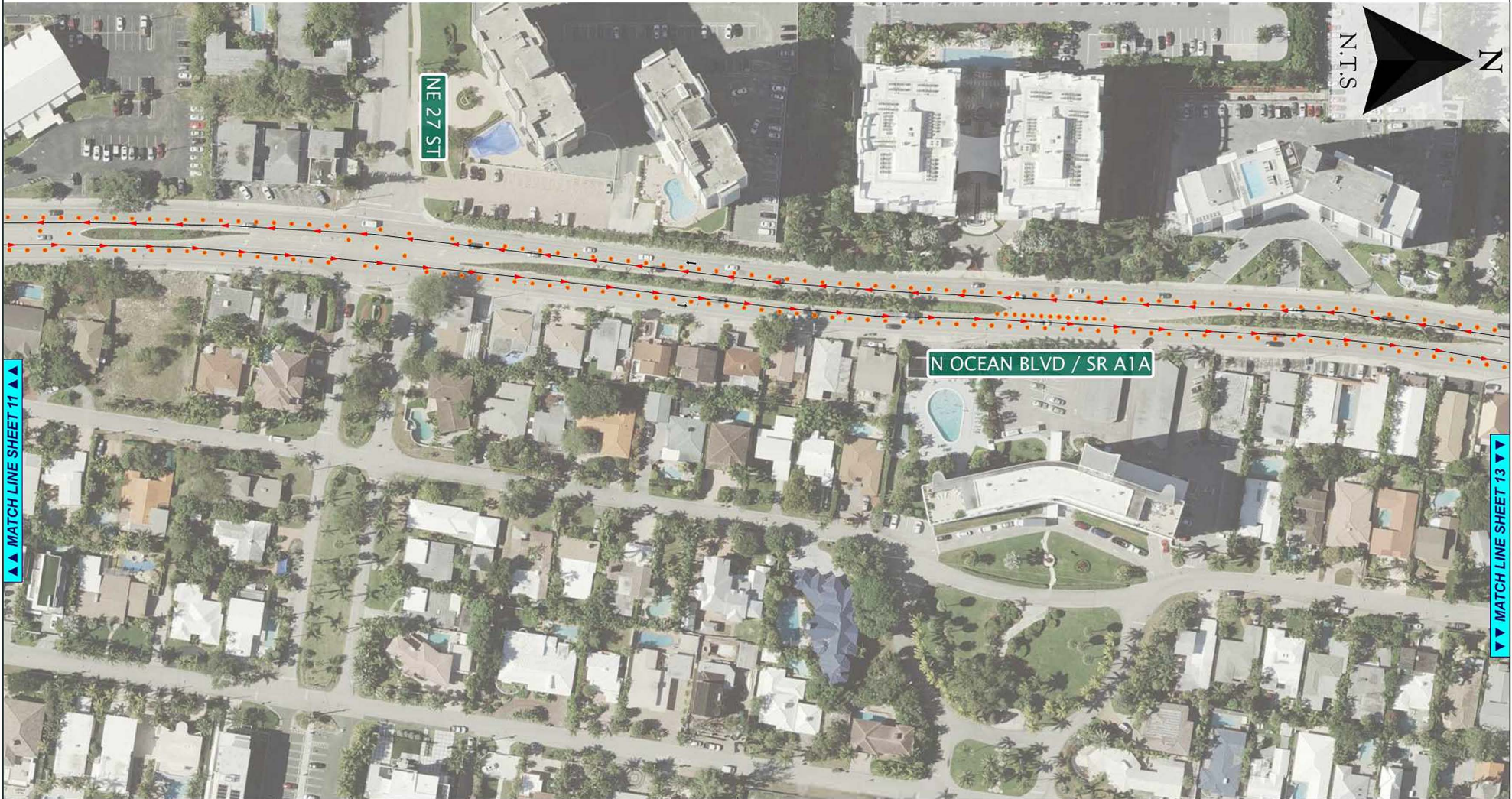
**Legend**

- Barrel
- Traffic Control Officer
- Water Barrier
- Lane Identification + Direction of Traffic
- Type III Barricades

ALL AMERICAN BARRICADES, CORP.  
 ATSSA CERTIFICATE # 62437  
 2300 SW 41ST AVENUE  
 FT. LAUDERDALE, FL 33317  
 1-888-4 SAFETY (888-472-3389)

www.barricades.com  
 email: harold@barricades.com

Designed by: HAROLD LARA  
 Date: 02/03/21  
 Sheet: 11



**FDOT** This Certifies that **HAROLD LARA**  
 Has Completed a Florida Department of Transportation Approved  
 Temporary Traffic Control (TTC) Advanced Course.  
 Date Expires: 05/20/2024 Certificate # 62437  
 Instructor: Juan Morales FDOT Provider # 37

ATSSA  
 Phone: 540-368-1701  
 15 Riverside Parkway Ste.100  
 Fredericksburg, VA  
 www.atssa.com  
 donna.clark@atssa.com

**ATSSA**  
 SAFER ROADS SAVE LIVES

DISTANCE BETWEEN SIGNS				Table I Device Spacing				Table II Buffer Space and Taper Length					
Speed	Spacing (ft)			Speed (mph)	Type III Sign Center to Taper Marker	Type III Sign Marker to End of Taper	Type III Sign End of Taper to End of Buffer	Type III Sign End of Buffer to End of Taper	Speed (mph)	Buffer Space		Taper Length	
	A	B	C							Dist (ft)	Dist (ft)	Dist (ft)	Dist (ft)
40 mph or less	200	250	200	25	155	125	80	425	600	60	425	600	
45 mph	350	350	350	30	200	150	60	425	550	60	425	550	
50 mph	500	500	500	35	250	245	60	570	720	60	570	720	
55 mph or greater	2640	1648	1005	45	350	320	65	645	780	70	730	840	

**General Traffic Plan (MOT) Notes:**

- Copy of approved 11 x 17 (TTC) MOT drawing to be maintained onsite by contractor at all times.
- No changes to TTC/MOT drawing without prior consent of the approving government agency and All American Barricades.
- Access shall be given to local residents, public transportation and emergency response vehicles.
- Accommodations to be made for Fireman traffic should the work be in conflict with pathways. Refer to the FDOT 2020-21 Standard Plans Index 102-660 for applications.
- All MOT equipment to conform to the latest Manual On Uniform Traffic Control Devices (MUTCD), FDOT, APL with respect to approving agency permit provisions.
- Field conditions to be considered when placing MOT devices.
- TTC/MOT Plan NOT TO SCALE. Refer to FDOT index 102-660 Series Distance Charts for device spacing and placement information.
- Posted Regulatory Speed Limit to be considered for device placement and distances.
- MOT devices placement on plans are an approximation and may be adjusted to suit existing field conditions.
- PLANS NOT TO SCALE.
- All American Barricades does not warrant the traffic control setup by others. The setup must be handled by personnel certified and trained to handle traffic control.

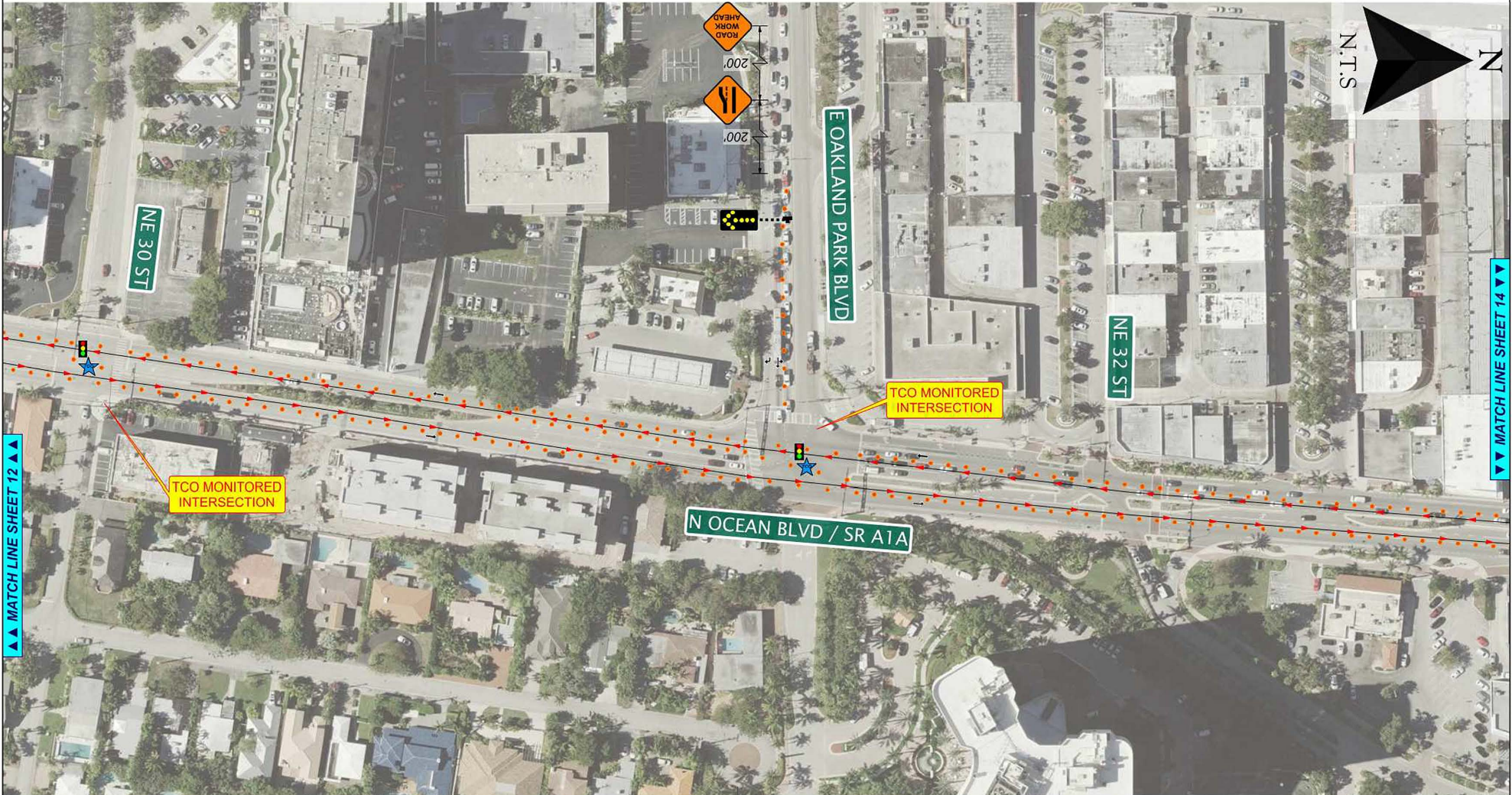
Project Information			Company		
MULTI RACE			ALL AMERICAN BARRICADES, CORP. ATSSA CERTIFICATE # 62437		
Revisions			Legend		
No.	DATE	BY	DESCRIPTION		

**Legend**

- Orange circle: Barrel
- Blue star: Traffic Control Officer
- Red exclamation mark: Water Barrier
- Arrow: Lane Identification + Direction of Traffic
- Black square: Type III Barricades

**ALL AMERICAN BARRICADES, CORP.**  
 ATSSA CERTIFICATE # 62437  
 2300 SW 41ST AVENUE  
 FT. LAUDERDALE, FL 33317  
 1-888-4 SAFETY (888-472-3389)  
 www.barricades.com  
 email: harold@barricades.com

Designed by: **HAROLD LARA**  
 Date: 02/03/21  
 Sheet : 12



**FDOT** This Certifies that **HAROLD LARA**  
 Has Completed a Florida Department of Transportation Approved Temporary Traffic Control (TTC) Advanced Course.  
 Date Expires: 05/20/2024 Certificate # 62437  
 Instructor: Juan Morales FDOT Provider # 37

ATSSA Phone: 540-368-1701  
 15 Riverside Parkway Ste.100  
 Fredericksburg, VA  
 www.atssa.com  
 donna.clark@atssa.com

**ATSSA**  
 SAFER ROADS SAVE LIVES

DISTANCE BETWEEN SIGNS				Table I Device Spacing				Table II Buffer Space and Taper Length				
Speed	Spacing (ft)			Speed (mph)	Type of Sign	Max. Distance Between Devices (ft)	Buffer Space (ft)	Taper Length (ft)		Speed (mph)	Buffer Space (ft)	Taper Length (ft)
	A	B	C					L	W			
45 mph or less	200	200	200	25	Advance	150	150	150	150	25	150	150
45 mph	350	350	350	35	Advance	250	250	250	250	35	250	250
50 mph	500	500	500	50	Advance	350	350	350	350	50	350	350
55 mph or greater	2640	1640	1000	55	Advance	500	500	500	500	55	500	500

**General Traffic Plan (MOT) Notes:**

- Copy of approved 11 x 17 (TTC) MOT drawing to be maintained onsite by contractor at all times.
- No changes to TFC/MOT drawing without prior consent of the approving government agency and ATSSA American Barricades.
- Access shall be given to local residents, public transportation and emergency response vehicles.
- Accommodations to be made for pedestrian traffic should the work be in conflict with pathways. Refer to the FDOT 2020-21 FDOT Standard Plans Index 102-660 for applications.
- All MOT equipment to conform to the latest Manual On Uniform Traffic Control Devices (MUTCD), FDOT, APL with respect to approving agency permit provisions.
- Field conditions to be considered when placing MOT devices.
- TFC/MOT Plan NOT TO SCALE. Refer to FDOT index 102-660 State Distance Chart for device spacing and placement information.
- Placed Regulatory Speed Limit to be considered for device placement and distances.
- MOT devices placement on plans are an approximation and may be adjusted to suit existing field conditions.
- PLANS NOT TO SCALE.
- All American Barricades does not warrant the traffic control setup by others. The setup must be handled by personnel certified and trained to handle traffic control.

Project Information			Company		
MULTI RACE					
Revisions			Legend		
No.	DATE	BY	DESCRIPTION		

**Legend**

- Barrel
- Lane Identification + Direction of Traffic
- Traffic Control Officer
- Type III Barricades
- Water Barrier

**ALL AMERICAN BARRICADES, CORP.**  
 ATSSA CERTIFICATE # 62437  
 2300 SW 41ST AVENUE  
 FT. LAUDERDALE, FL 33317  
 1-888-4 SAFETY (888-472-3389)

www.barricades.com  
 Designed by: HAROLD LARA  
 email: harold@barricades.com

Date: 02/03/21 Sheet : 13



**FDOT** This Certifies that **HAROLD LARA**  
 Has Completed a Florida Department of Transportation Approved  
 Temporary Traffic Control (TTC) Advanced Course.  
 Date Expires: 05/20/2024 Certificate # 62437  
 Instructor: Juan Morales FDOT Provider # 37

ATSSA  
 Phone: 540-368-1701  
 15 Riverside Parkway Ste.100  
 Fredericksburg, VA  
 www.atssa.com  
 donna.clark@atssa.com

**ATSSA**  
 SAFER ROADS SAVE LIVES

DISTANCE BETWEEN SIGNS				Table I Device Spacing				Table II Buffer Space and Taper Length			
Speed	Spacing (ft)			Type III Sign Category or Taper Markers	Max. Distance Between Devices (ft) Perch or Space Perch or Space	Speed (mph)	Buffer Space (ft)		Speed (mph)	Taper Length (ft) Lane Function	
	A	B	C				Dist. (ft)	Dist. (ft)		Dist. (ft)	Dist. (ft)
40 mph or less	200	200	200	None	None	25	155	125	30	425	600
45 mph	350	350	350	None	None	30	200	150	35	425	600
50 mph	500	500	500	None	None	35	250	245	40	570	720
55 mph or greater	2640	1648	1000	None	None	40	305	320	45	645	780
						45	362	560	50	730	840

**General Traffic Plan (MOT) Notes:**

- Copy of approved 11 x 17 (TTC) MOT drawing to be maintained on-site by contractor at all times.
- No changes to TCMOT drawing without prior consent of the approving government agency and All American Barricades.
- Access shall be given to local residents, public transportation and emergency response vehicles.
- Accommodations to be made for pedestrian traffic should the work be in conflict with pathways. Refer to the FY2020-21 FDOT Standard Plans (Rev. 102-660) for specifications.
- All MOT equipment to conform to the latest Manual On Uniform Traffic Control Devices (MUTCD)/FDOT/APL with respect to approving agency permit provisions.
- Field conditions to be considered when placing MOT devices.
- TCMOT Plan NOT TO SCALE. Refer to FDOT index 102-660 General Distance Chart for device spacing and placement information.
- Posted Regulatory Speed Limit to be considered for device placement and distances.
- MOT devices placed on plus are an approximate and may be adjusted to suit existing field conditions.
- PLANS NOT TO SCALE.
- All American Barricades does not warrant the traffic control setup by others. The setup must be handled by personnel certified and trained to handle traffic control.

Project Information			Company		
MULTI RACE			ALL AMERICAN BARRICADES, CORP. ATSSA CERTIFICATE # 62437		
Revisions			Legend		
No.	DATE	BY	Legend		
			Barrel	Lane Identification + Direction of Traffic	
			Traffic Control Officer	Type III Barricades	
			Water Barrier		

ALL AMERICAN BARRICADES, CORP.  
 ATSSA CERTIFICATE # 62437  
 2300 SW 41ST AVENUE  
 FT. LAUDERDALE, FL 33317  
 1-888-4 SAFETY (888-472-3389)

www.barricades.com  
 Designed by: HAROLD LARA  
 email: harold@barricades.com

Date: 02/03/21 Sheet : 14



**FDOT** This Certifies that **HAROLD LARA**  
 Has Completed a Florida Department of Transportation Approved Temporary Traffic Control (TTC) Advanced Course.  
 Date Expires: 05/20/2024 Certificate # 62437  
 Instructor: Juan Morales FDOT Provider # 37

ATSSA  
 Phone: 540-368-1701  
 15 Riverside Parkway Ste.100  
 Fredericksburg, VA  
 www.atssa.com  
 donna.clark@atssa.com

**ATSSA**  
 SAFER ROADS SAVE LIVES

DISTANCE BETWEEN SIGNS				Table I Device Spacing				Table II Buffer Space and Taper Length				
Speed	Spacing (ft)			Speed (mph)	Type III Sign	Type III Sign	Type III Sign	Speed (mph)	Buffer Space		Taper Length	
	A	B	C						Dist (ft)	Dist (ft)	Dist (ft)	Dist (ft)
40 mph or less	200	200	200	25	155	125	80	425	600	15	425	600
45 mph	250	350	350	30	200	150	60	425	600	15	425	600
50 mph	500	500	500	35	250	245	60	570	720	15	570	720
55 mph or greater	2640	1648	1005	45	360	320	65	645	780	15	645	780

**General Traffic Plan (MOT) Notes:**

- Copy of approved 11 x 17 (VCP) MOT drawing to be maintained onsite by contractor at all times.
- No changes to TCMOT drawing without prior consent of the approving government agency and All American Barricades.
- Accommodate all special needs, public transportation and emergency response vehicles.
- Accommodations to be made for pedestrian traffic should the work be in conflict with pathways. Refer to the FY2020-21 FDOT Standard Plans Index 102-680 for specifications.
- All MOT equipment to conform to the latest Manual On Uniform Traffic Control Devices (MUTCD), FDOT, APL with respect to approving agency permit provisions.
- Field conditions to be considered when placing MOT devices.
- TCMOT Plan NOT TO SCALE. Refer to FDOT index 102-680 Signal Distance Chart for device spacing and placement information.
- Posted Regulatory Speed Limit to be considered for device placement and distances.
- MOT devices placed on plans are an approximate and may be adjusted to suit existing field conditions.
- PLANS NOT TO SCALE.
- All American Barricades does not warrant the traffic control setup by others. The setup must be handled by personnel certified and trained to handle traffic control.

Project Information			Company		
MULTI RACE			ALLAMERICAN BARRICADES, CORP. ATSSA CERTIFICATE # 62437		
Revisions			2300 SW 41ST AVENUE FT. LAUDERDALE, FL 33317 1-888-4 SAFETY (888-472-3389)		
No.	DATE	BY	DESCRIPTION		

**Legend**

- Barrel
- Traffic Control Officer
- Water Barrier
- Lane Identification + Direction of Traffic
- Type III Barricades

Designed by: HAROLD LARA  
 Date: 02/03/21

www.barricades.com  
 email: harold@barricades.com

Sheet : 15





**FDOT** This Certifies that **HAROLD LARA**  
 Has Completed a Florida Department of Transportation Approved  
 Temporary Traffic Control (TTC) Advanced Course.  
 Date Expires: 05/20/2024 Certificate # 62437  
 Instructor: Juan Morales FDOT Provider # 37

ATSSA  
 Phone: 540-368-1701  
 15 Riverside Parkway Ste.100  
 Fredericksburg, VA  
 www.atssa.com  
 donna.clark@atssa.com

**ATSSA**  
 SAFER ROADS SAVE LIVES

DISTANCE BETWEEN SIGNS				Table I Device Spacing				Table II Buffer Space and Taper Length			
Speed	Spacing (ft)			Speed (mph)	Max. Distance Between Devices (ft)	Buffer Space		Taper Length			
	A	B	C			Dist. (ft)	Dist. (ft)	Dist. (ft)	Dist. (ft)		
40 mph or less	200	250	200	25	155	125	80	425	600		
45 mph	350	350	350	30	200	150	85	425	550		
50 mph	500	500	500	35	250	245	60	570	720		
55 mph or greater	740	640	1000	40	305	320	65	645	780		

**General Traffic Plan (MOT) Notes:**

- Copy of approved 11 x 17 (TTC) MOT drawing to be maintained onsite by contractor at all times.
- No changes to TFC/MOT drawing without prior consent of the approving government agency and ATSSA American Barricades.
- Access shall be given to local residents, public transportation and emergency response vehicles.
- Accommodations to be made for pedestrian traffic should the work be in conflict with pathways. Refer to the FY2020-21 FDOT Standard Plans Index 102-660 for specifications.
- All MOT required to conform to the latest Manual On Uniform Traffic Control Devices (MUTCD), FDOT, APL with respect to approving agency permit provisions.
- Field conditions to be considered when placing MOT devices.
- TFC/MOT Plan NOT TO SCALE. Refer to FDOT index 102-660 Street Closure Chart for device spacing and placement information.
- Posted Regulatory Speed Limit to be considered for device placement and distances.
- MOT device's placement on plans are an approximate and may be adjusted to suit existing field conditions.
- PLANS NOT TO SCALE.
- All American Barricades does not warrant the traffic control setup by others. The setup must be handled by personnel certified and trained to handle traffic control.

Project Information			Company		
MULTI RACE			ALL AMERICAN BARRICADES, CORP. ATSSA CERTIFICATE # 62437		
Revisions			Legend		
No.	DATE	BY	DESCRIPTION		

**Legend**

- Barrel
- Traffic Control Officer
- Water Barrier
- Lane Identification + Direction of Traffic
- Type III Barricades

ALL AMERICAN BARRICADES, CORP.  
 ATSSA CERTIFICATE # 62437  
 2300 SW 41ST AVENUE  
 FT. LAUDERDALE, FL 33317  
 1-888-4 SAFETY (888-472-3389)

www.barricades.com  
 Designed by: HAROLD LARA  
 email: harold@barricades.com

Date: 02/03/21 Sheet: 16

